



Pioneer Energy Services

Dual Induction Log

15-051-26,689-00-00

API No.

Company **TDI, Inc.**

Well **Dolores #1**

Field **Martina North**

County **Elilis** State

Kansas

Location **375' FNL & 725' FWL**

Sec: **15** Twp: **15S** Rge: **19W**

Other Services
CNL/CDL
MEL

Permanent Datum **Ground Level** Elevation **2009**

Log Measured From **Kelly Bushing**

10 Ft. Above Perm. Datum

Drilling Measured From **Kelly Bushing**

Elevation
K.B. 2019
D.F.
G.L. 2009

Date **6/10/2014**

Run Number **One**

Depth Driller **3750**

Depth Logger **3752**

Bottom Logged Interval **3751**

Top Log Interval **1200**

Casing Driller **8.625 @ 1236**

Casing Logger **1232**

Bit Size **7.875**

Type Fluid in Hole **Chemical**

Salinity,ppm CL **4,300**

Density / Viscosity **9.1 50**

pH / Fluid Loss **10.0 9.2**

Source of Sample **Flowline**

Rm @ Meas. Temp **.75 @ 85**

Rmf @ Meas. Temp **.56 @ 85**

Rmc @ Meas. Temp **1.01 @ 85**

Source of Rmf / Rmc **Charts**

Rm @ BHT **.56 @ 114**

Operating Rig Time **3 Hours**

Max Rec. Temp. F **114**

Equipment Number **17**

Location **Hays**

Recorded By **Y. Ruiz**

Witnessed By **Tom Denning**

<<< Fold Here >>>

All interpretations are opinions based on inferences from electrical or other measurements and we cannot and do not guarantee the accuracy or correctness of any interpretation, and we shall not, except in the case of gross or willful negligence on our part, be liable or responsible for any loss, costs, damages, or expenses incurred or sustained by anyone resulting from any interpretation made by any of our officers, agents or employees. These interpretations are also subject to our general terms and conditions set out in our current Price Schedule.

Comments

Thank you for using Pioneer Energy Services
www.pioneerenergy.com
785 625 3858

Antonino KS, 2 W, 2 S,
1/8 E, S Into

Database File: c:\warrior\data\tdi_dolores #1\tdi_dolores_1hd.db
Dataset Pathname: dil\tdist3
Presentation Format: dil2in
Dataset Creation: Tue Jun 10 16:07:03 2014
Charted by: Depth in Feet scaled 1:600

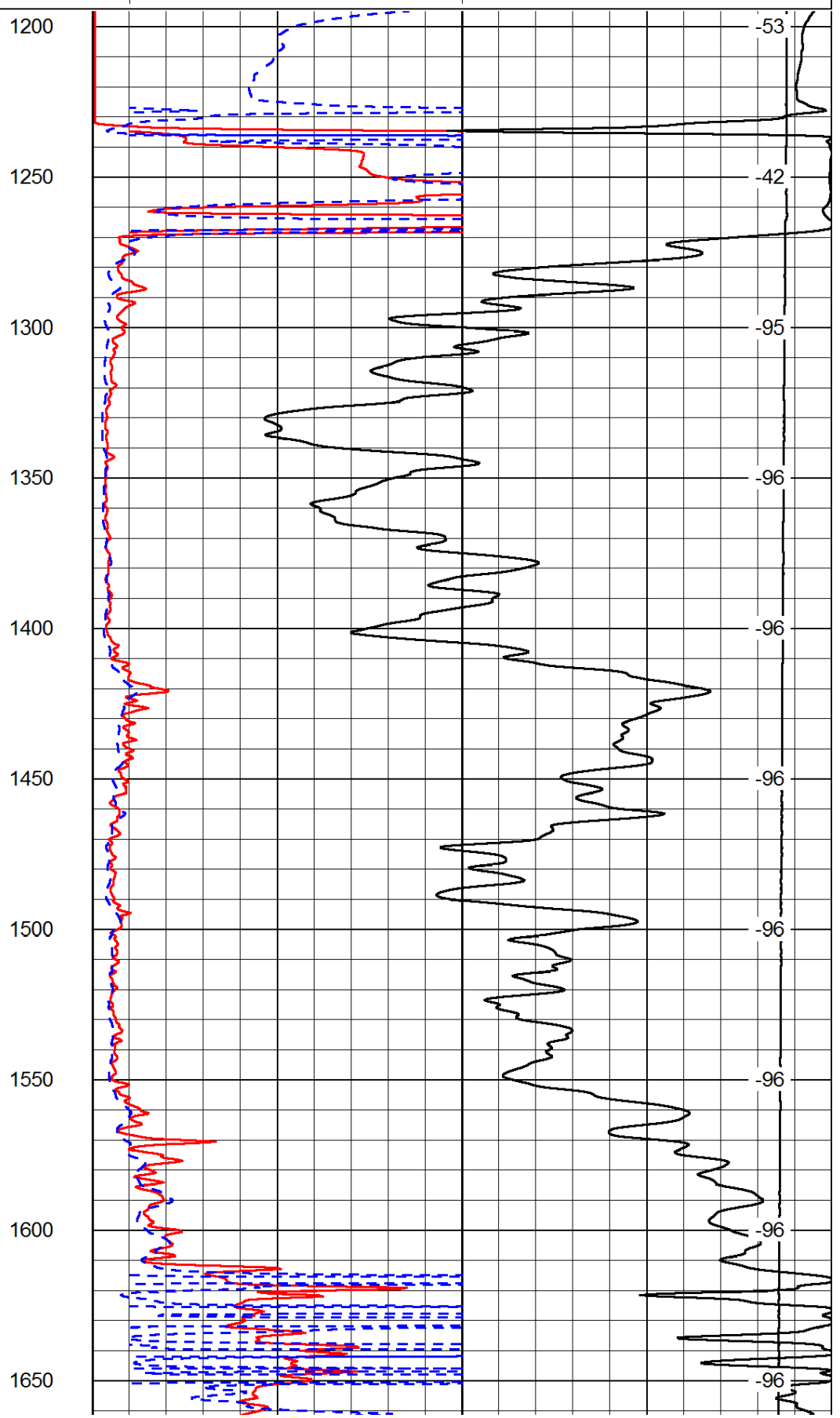
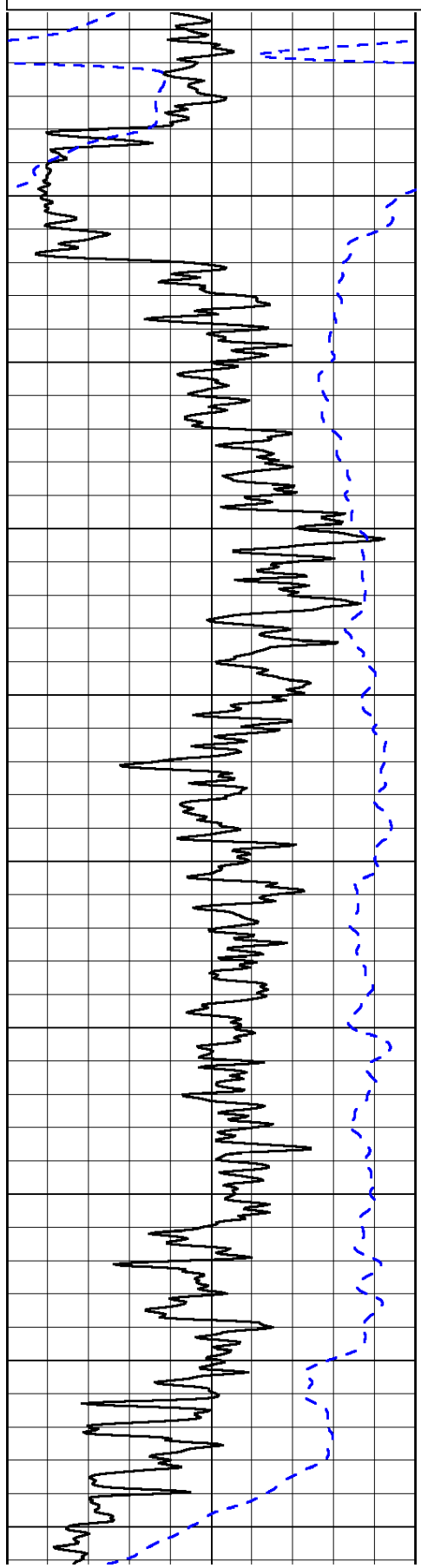
0	Gamma Ray	150
-200	SP (mV)	0

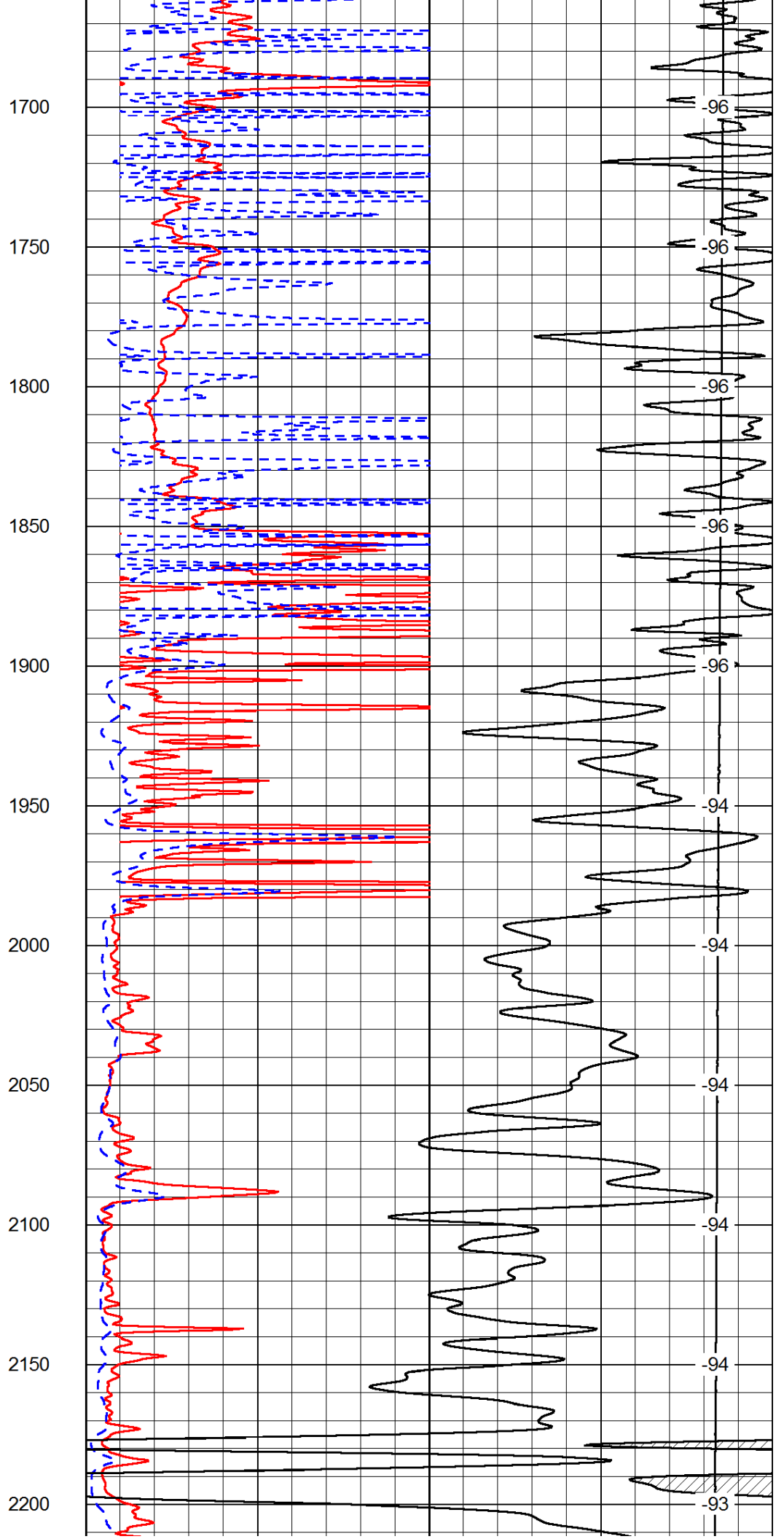
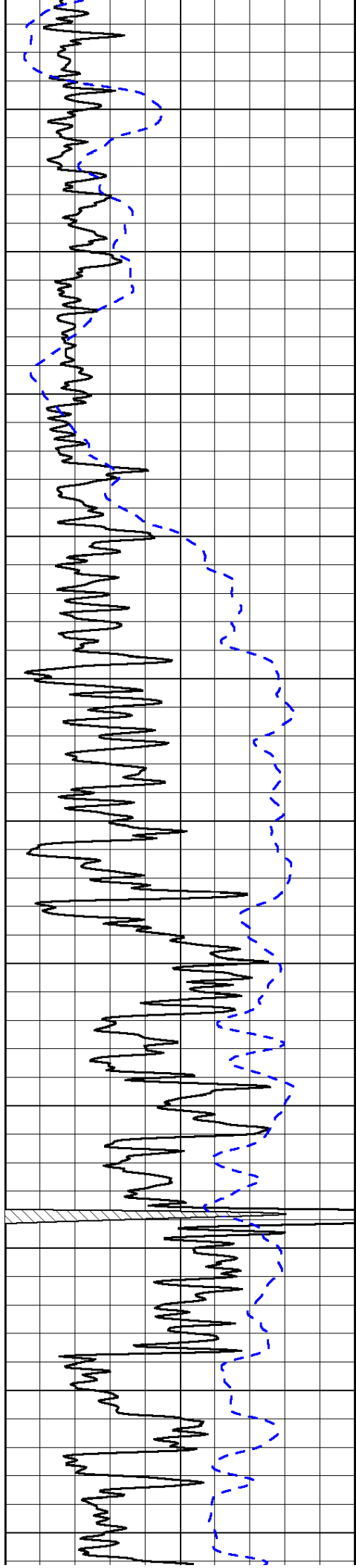
0	Shallow Resistivity	50
0	Deep Resistivity	50

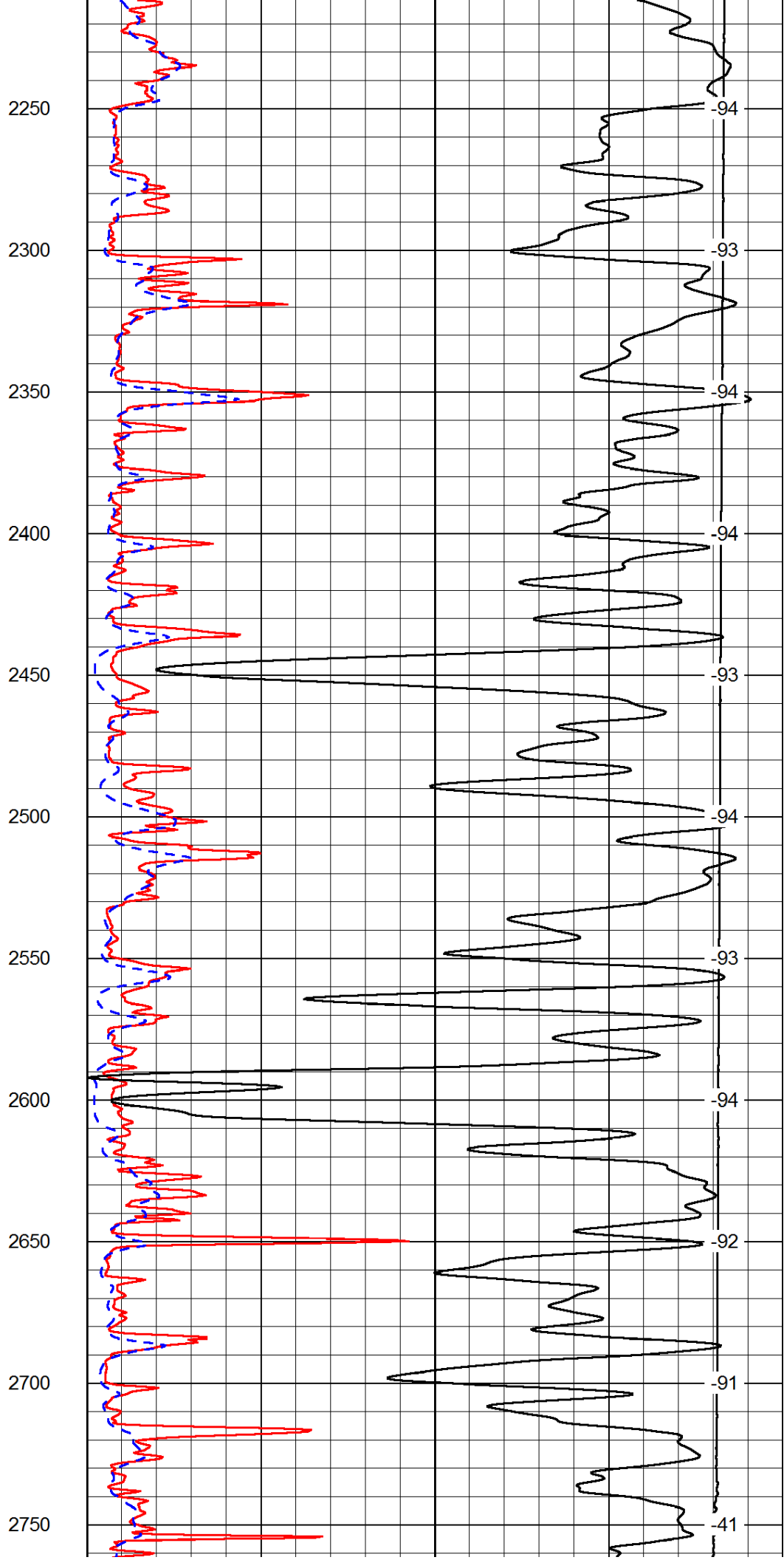
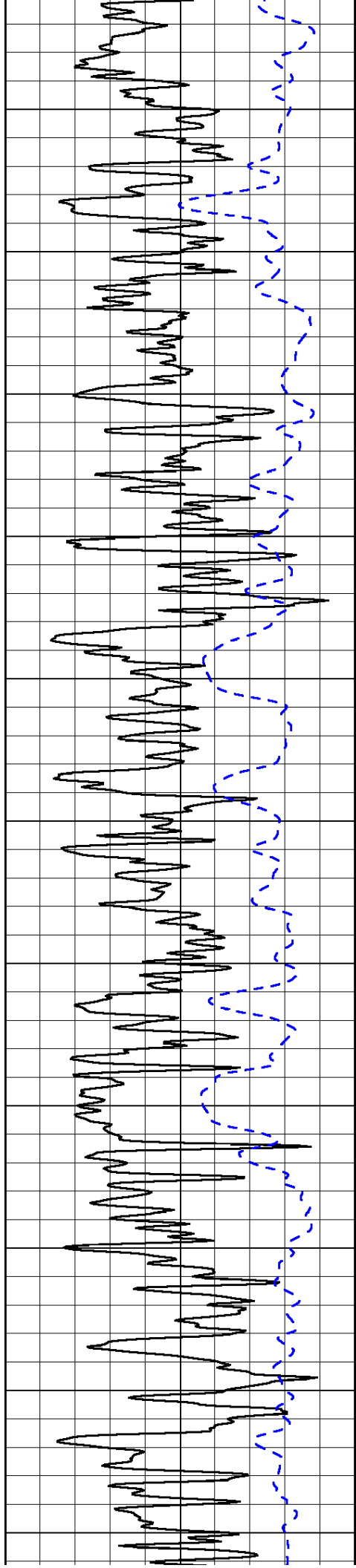
LSPD

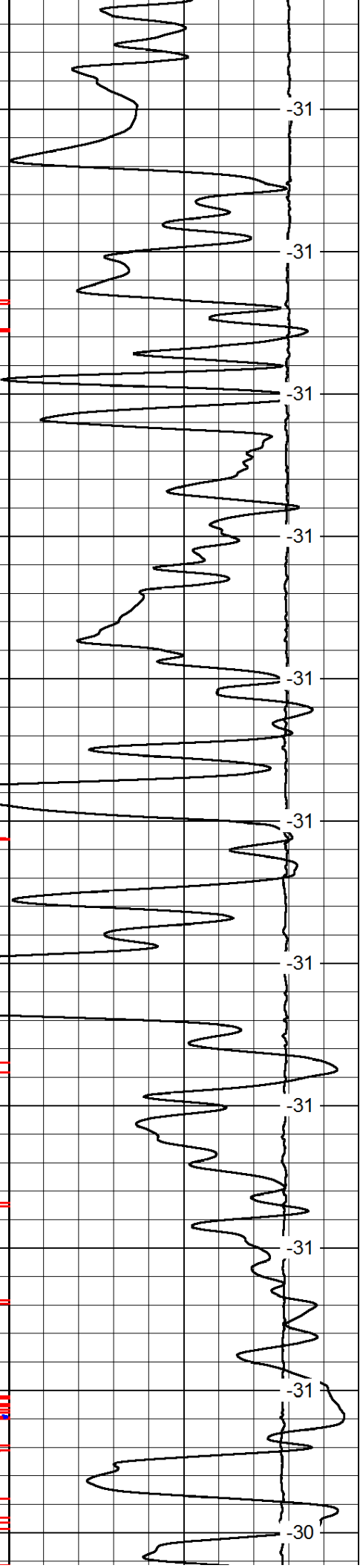
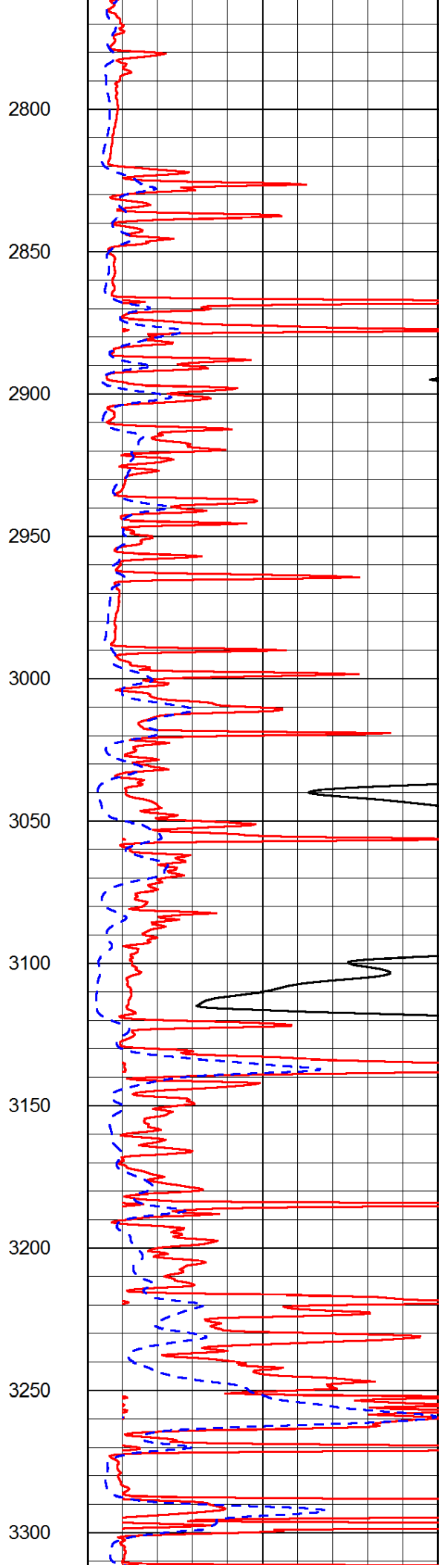
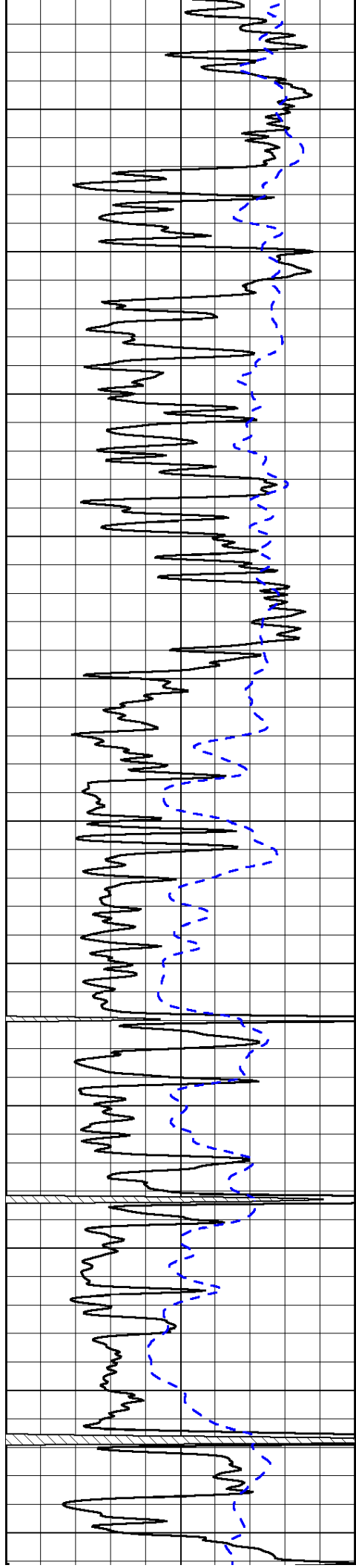
1000	Conductivity	0
15000	Line Tension	0

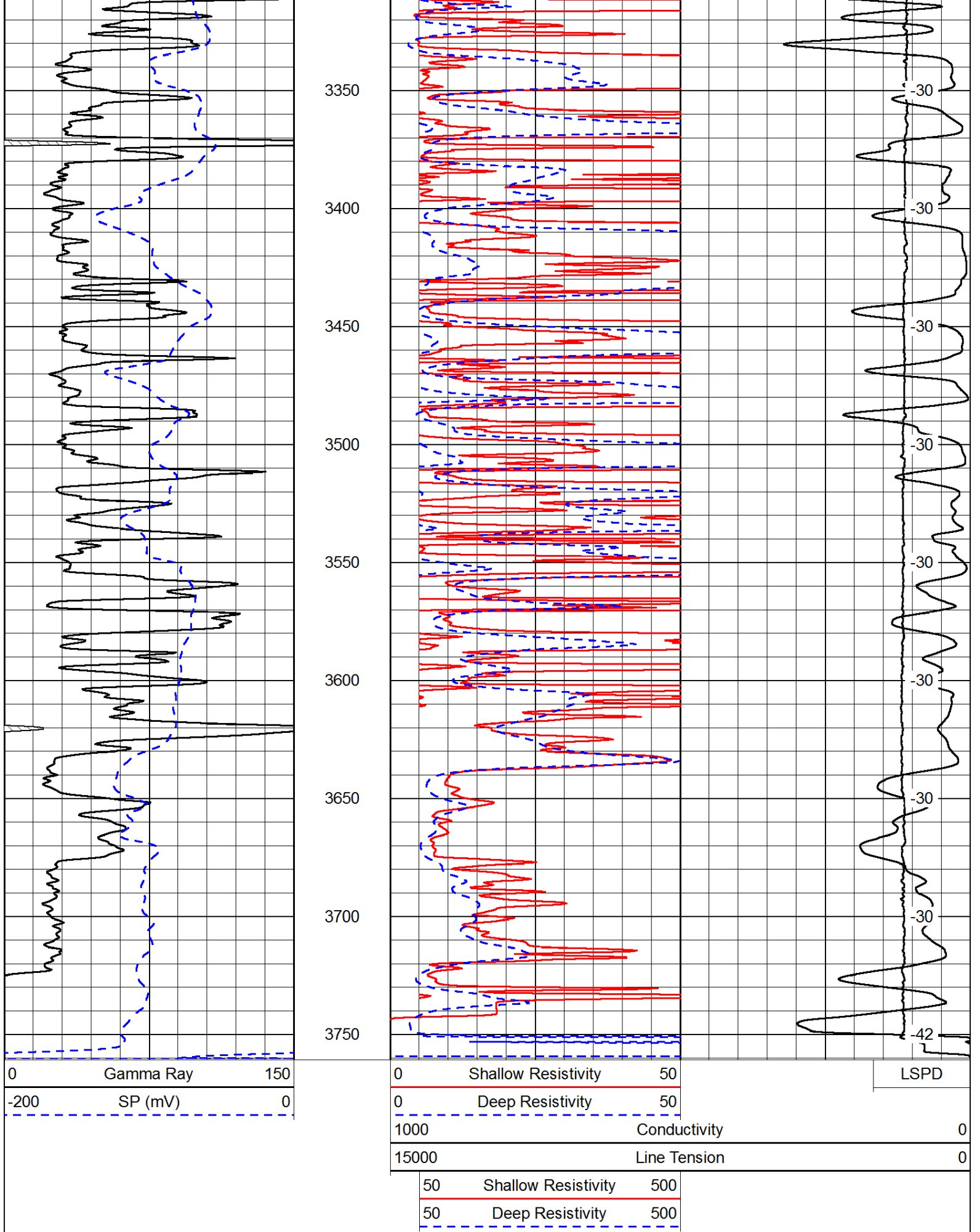
50	Shallow Resistivity	500
50	Deep Resistivity	500









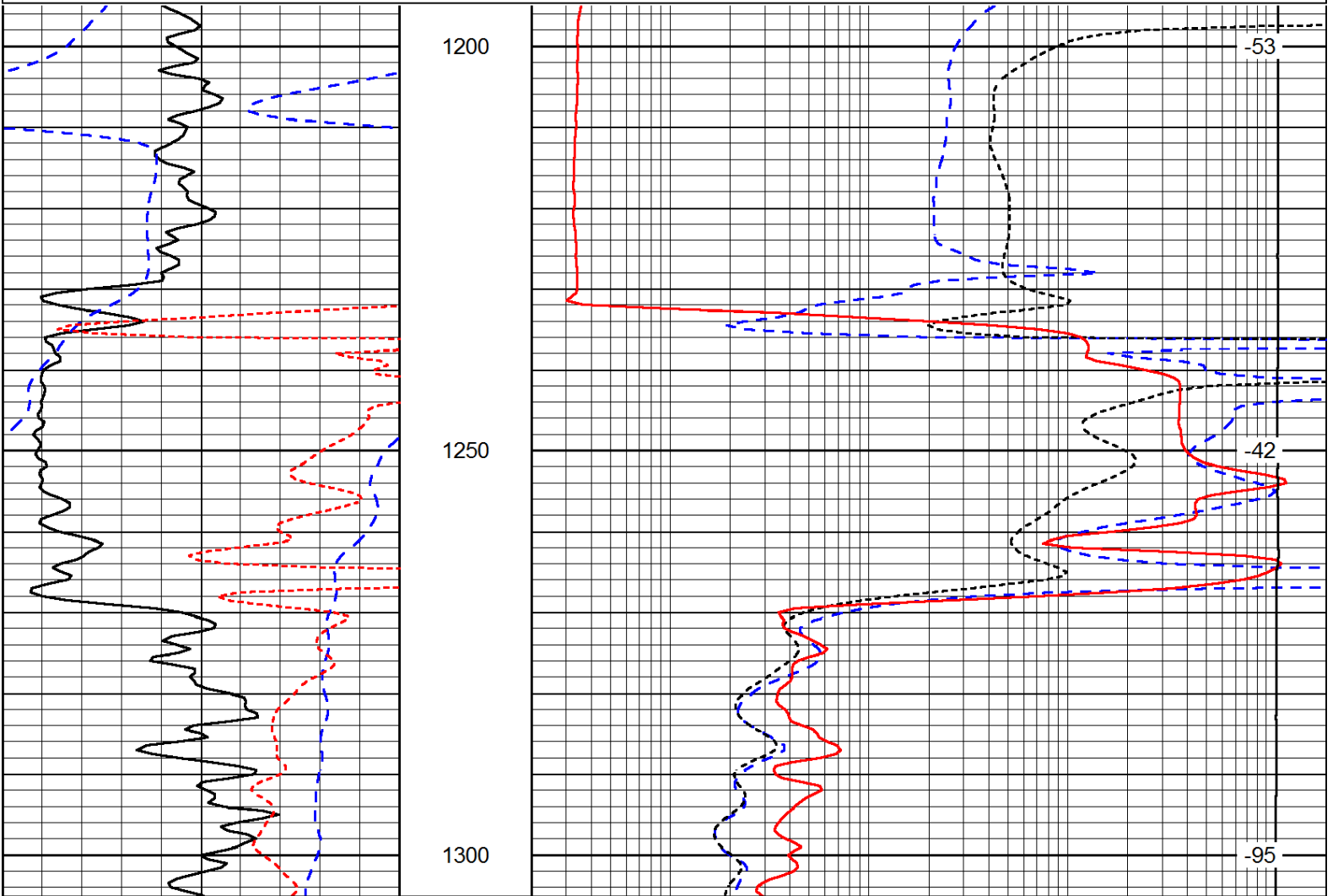


Dataset Pathname: dil/tdist3
 Presentation Format: dil
 Dataset Creation: Tue Jun 10 16:07:03 2014
 Charted by: Depth in Feet scaled 1:240

0	Gamma Ray	150
-200	SP (mV)	0
-160	RxoRt	40

0.2	Deep Resistivity	2000
0.2	Medium Resistivity	2000
0.2	Shallow Resistivity	2000
15000	Line Tension	0

LSPD



0	Gamma Ray	150
-200	SP (mV)	0
-160	RxoRt	40

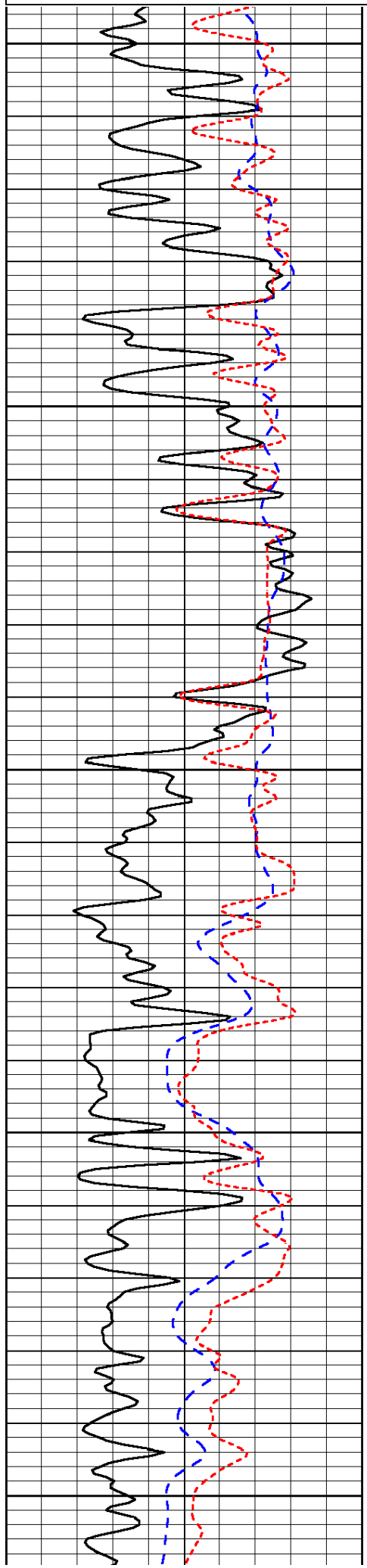
0.2	Deep Resistivity	2000
0.2	Medium Resistivity	2000
0.2	Shallow Resistivity	2000
15000	Line Tension	0

LSPD

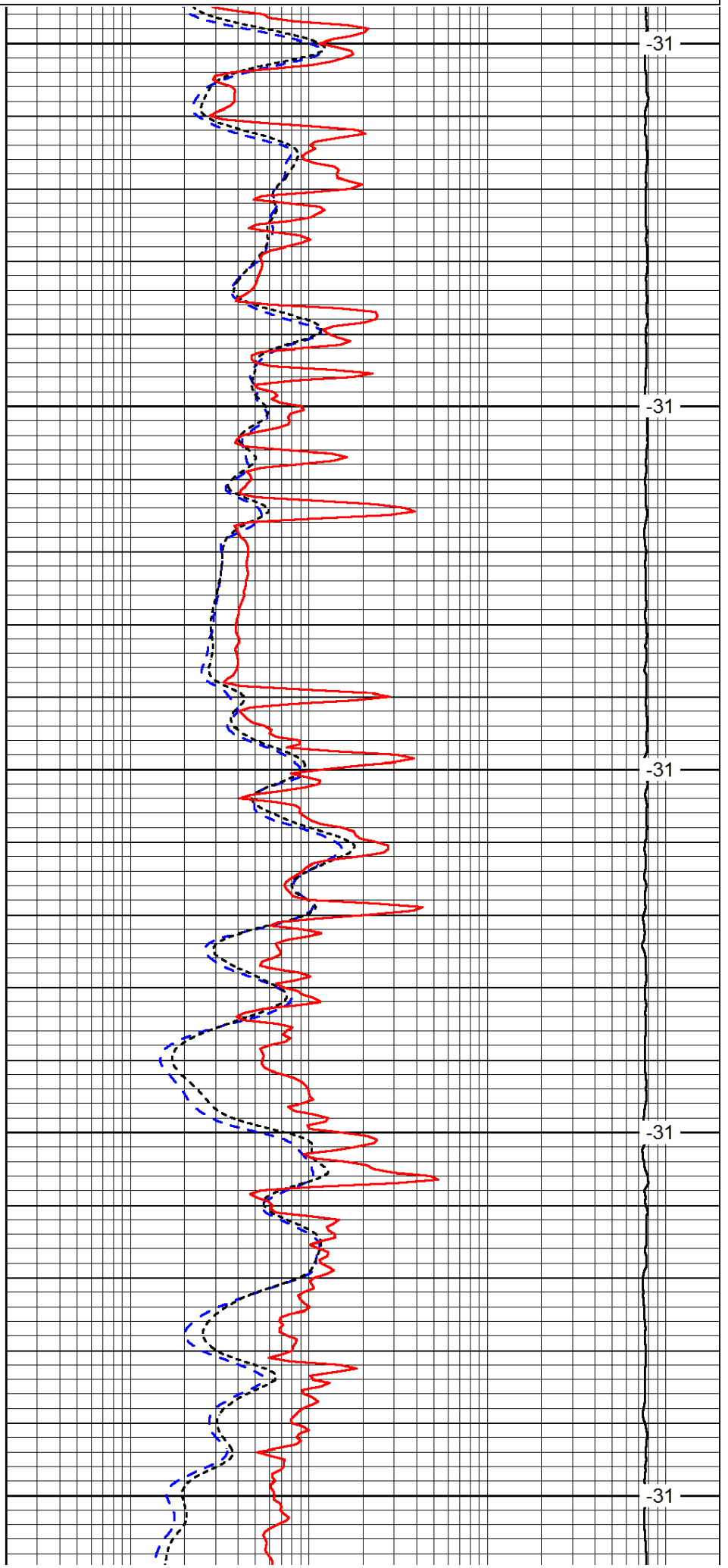
Database File: c:\warrior\data\tdi_dolores #1\tdi_dolores_1hd.db
 Dataset Pathname: dil/tdist3
 Presentation Format: dil
 Dataset Creation: Tue Jun 10 16:07:03 2014
 Charted by: Depth in Feet scaled 1:240

0	Gamma Ray	150
-200	SP (mV)	0
-160	RxoRt	40

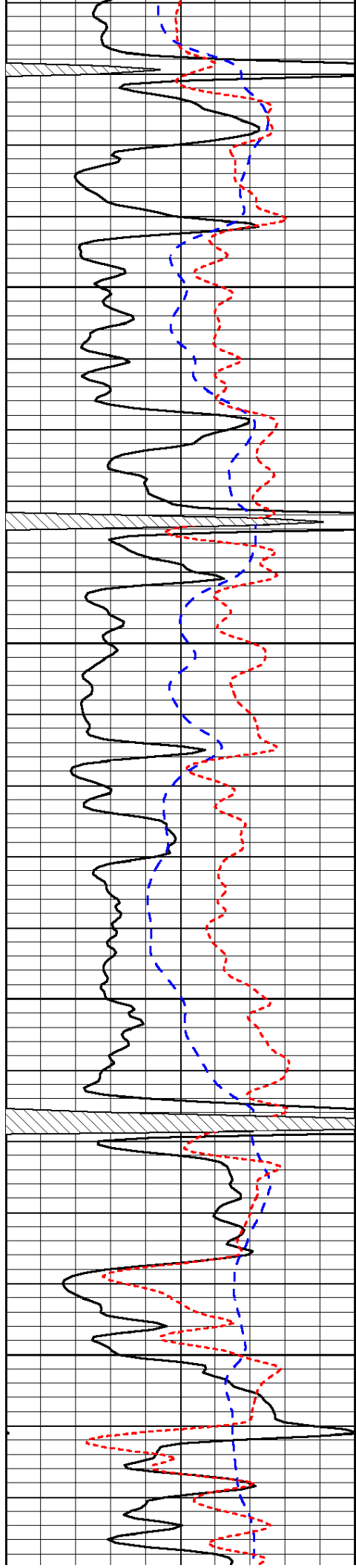
0.2	Deep Resistivity	2000
0.2	Medium Resistivity	2000
0.2	Shallow Resistivity	2000
15000	Line Tension	0



2900
2950
3000
3050
3100



-31
-31
-31
-31
-31

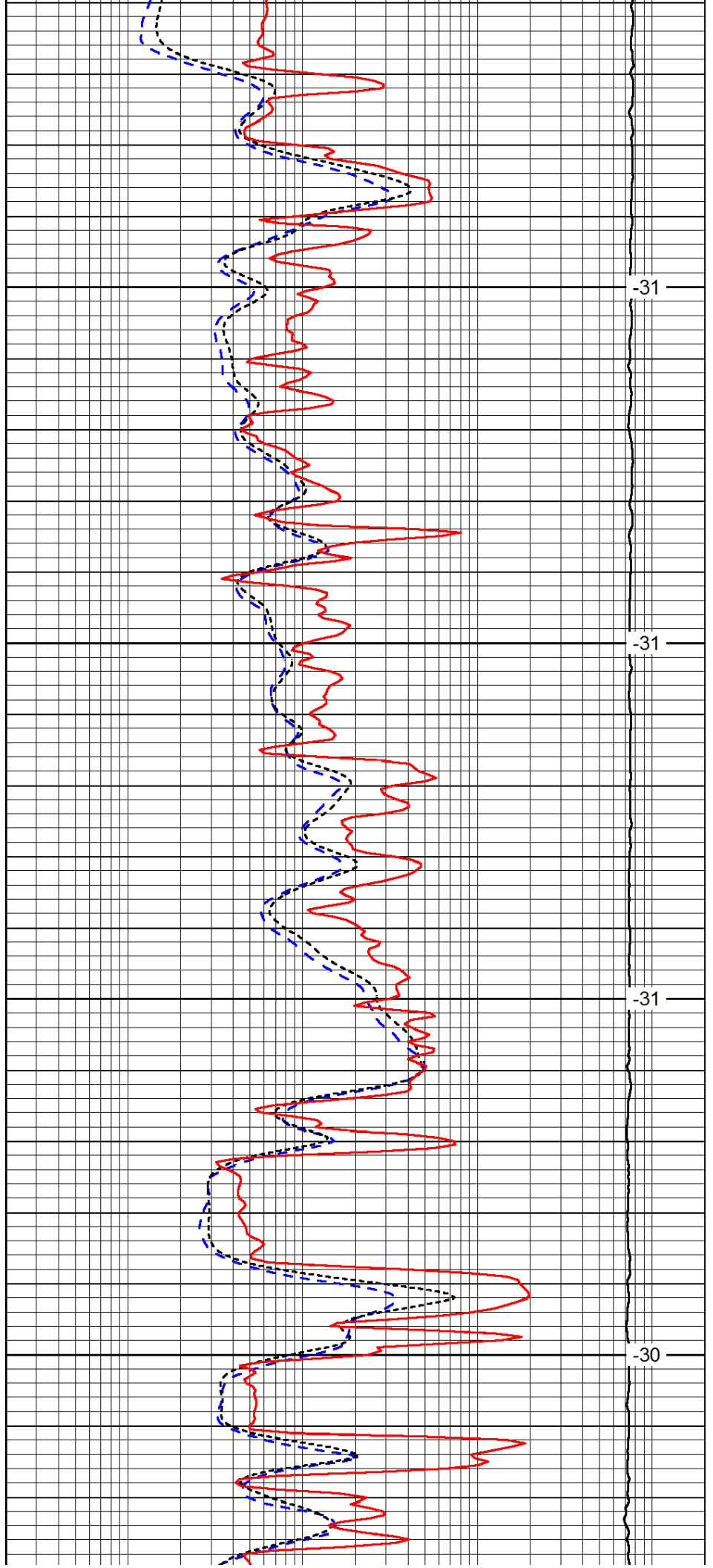


3150

3200

3250

3300

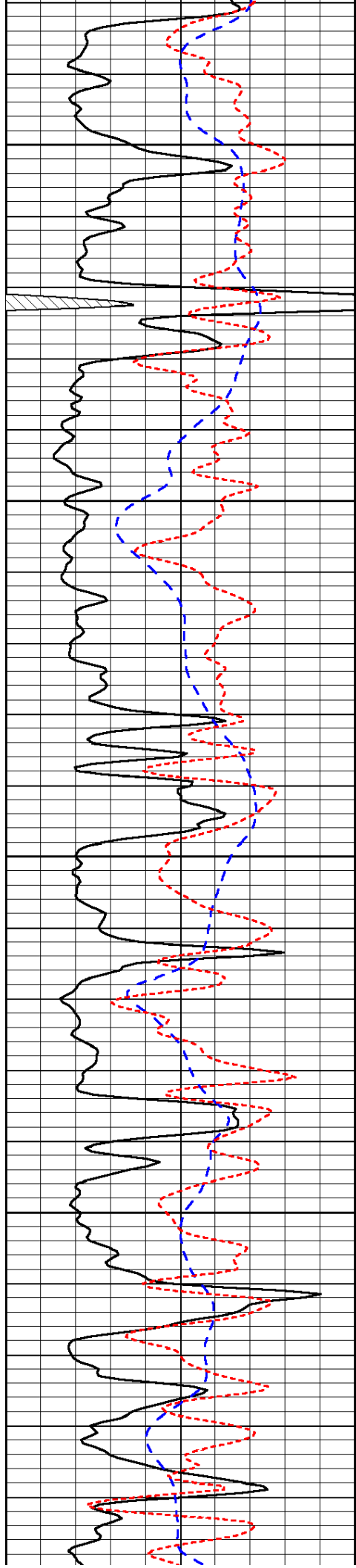


-31

-31

-31

-30



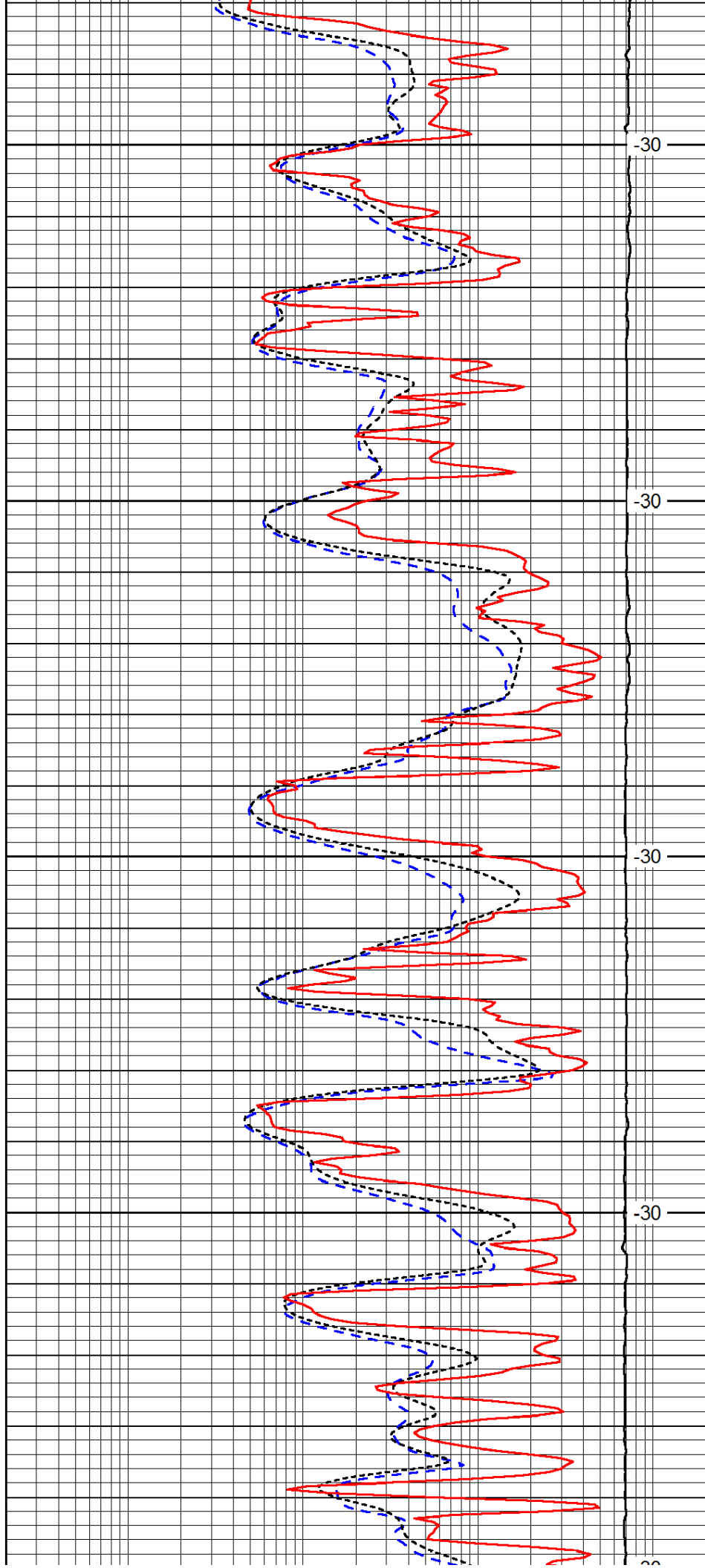
3350

3400

3450

3500

3550



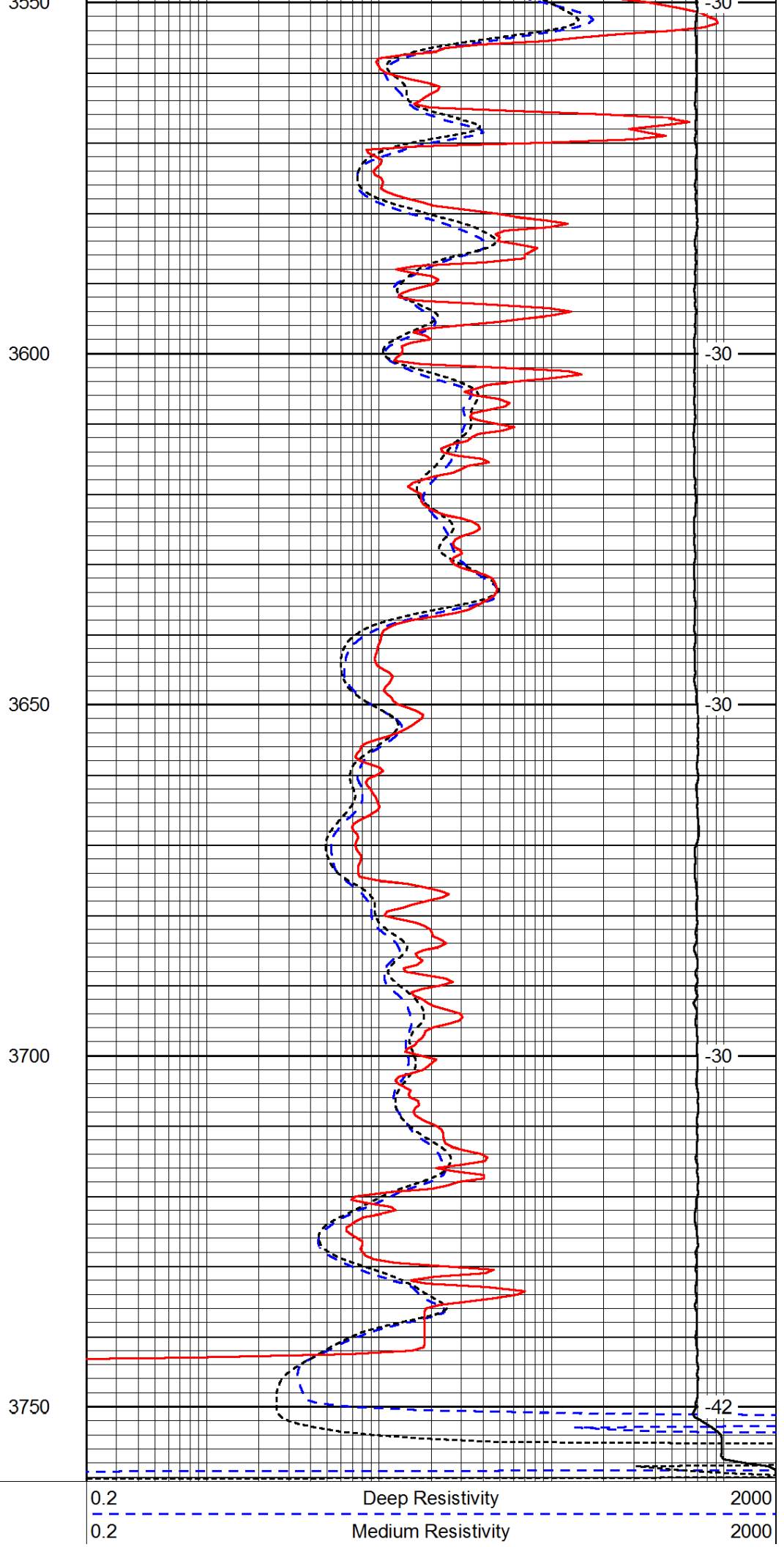
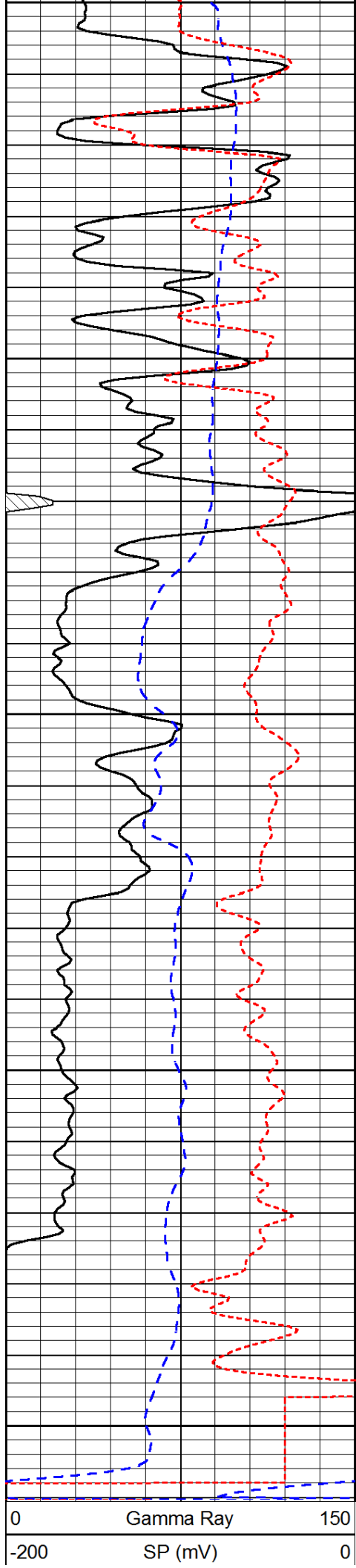
-30

-30

-30

-30

-30



-160	RxoRt	40
------	-------	----

0.2	Shallow Resistivity	2000
15000	Line Tension	0
		LSPD