



Pioneer Energy Services

Sector Bond / Gamma Ray
CCL Log

15-051-26,683-00-00

Company Richland Oil Investments, LLC
Well Schonthalers No. 4
Field Lucky Lady
County Ellis
State Kansas

Location

1,813' FNL & 390' FWL

Other Services

Sec: 30 Twp: 11 S Rge: 19 W

Elevation

Permanent Datum Ground Level Elevation 2035
Log Measured From Kelly Bushing 6 Ft. Above Perm. Datum
Drilling Measured From Kelly Bushing

K.B. 2041
D.F.
G.L. 2035

Run Number	One	
Date Survey	05-20-2014	
Date Cementing	05-2-2014	
Type Cementing Operation	Primary	
Depth Driller	3690	
Depth Logger	3657	
Logged Interval	3656 to 2700	to
Casing Driller	5.5" @ T.D.	@
Float Collar -- D.V. Tool	1415	1415
Squeeze Depth	////	
Amount & Type Cement	////	
Amount & Type Admix	////	
Type Fluid In Hole	Water	
Fluid Level	170'	
Salinity PPM CL	////	
Weight lb/gal -- Vis.	////	////
Approx. Logged Cement Top	2885	
Calculated Cement Top	////	
Max. Hole Temperature	115	
Tool No.	RBT 5-5	
Spacing Recorded	3-5	
Equipment -- Location	4	Hays
Recorded By	Stan Linenberger	
Witnessed By	Keith Lamberd	

<<< Fold Here >>>

All interpretations are opinions based on inferences from electrical or other measurements and we cannot and do not guarantee the accuracy or correctness of any interpretation, and we shall not, except in the case of gross or willful negligence on our part, be liable or responsible for any loss, costs, damages, or expenses incurred or sustained by anyone resulting from any interpretation made by any of our officers, agents or employees. These interpretations are also subject to our general terms and conditions set out in our current Price Schedule.

Comments

Thank you for using Pioneer Energy Services
☐☐785.625.3858
Yocemento Exit on I-70
North to Buckeye Rd., West to 170 th Ave.,
North to Curves, West Into at Cattle Guard (Tank Batteries).



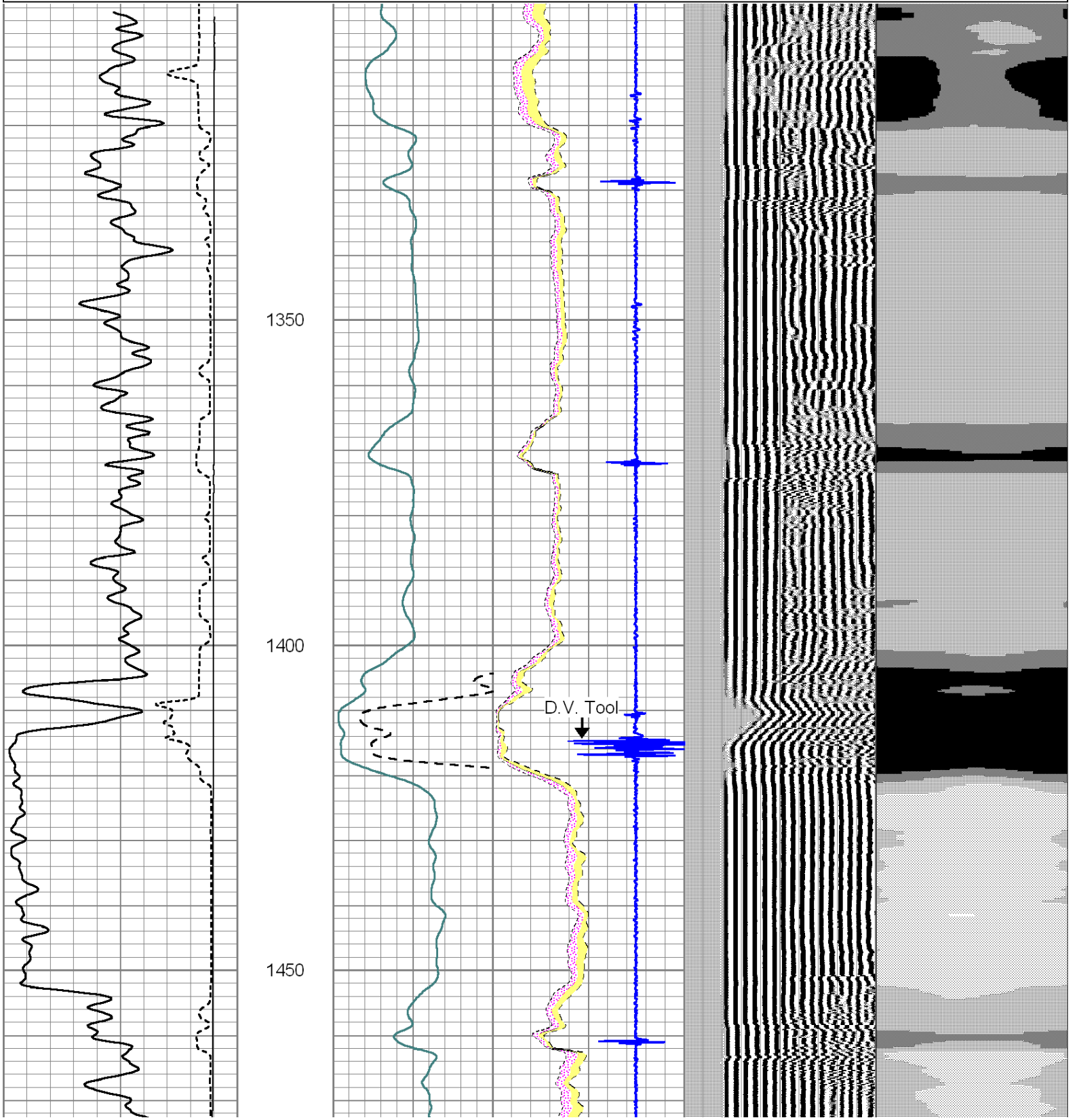
D.V. Tool @ 1415'

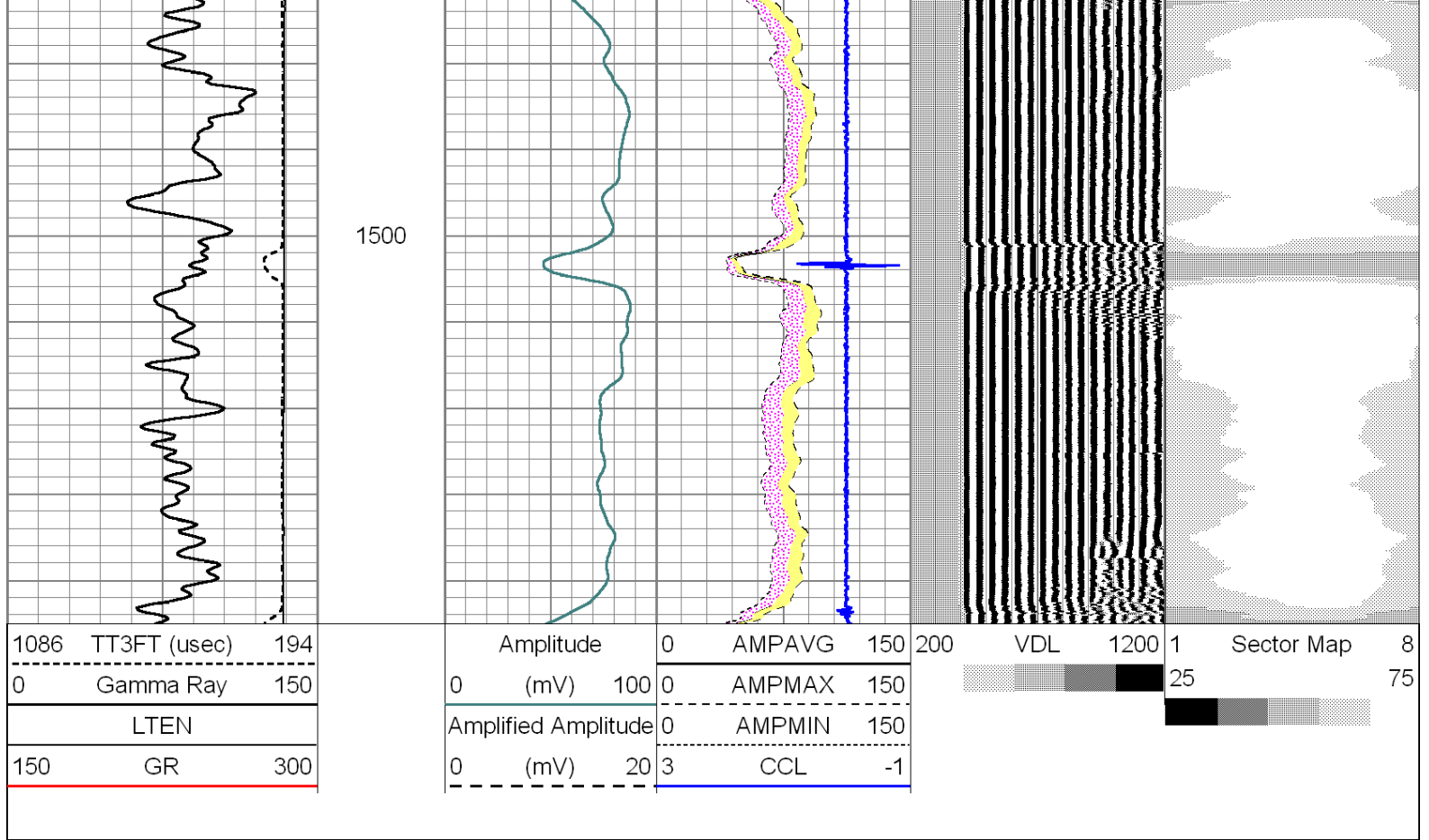
Database File: richlandoil_schonthaler_4_scbl.db
 Dataset Pathname: scbl/pass3
 Presentation Format: scbl18
 Dataset Creation: Tue May 20 18:26:06 2014 by Log Std Casedhole 09061
 Charted by: Depth in Feet scaled 1:240

1086	TT3FT (usec)	194
0	Gamma Ray	150
LTEN		
150	GR	300

Amplitude	0	AMPavg	150
(mV)	100	AMPmax	150
Amplified Amplitude	0	AMPmin	150
(mV)	20	CCL	-1

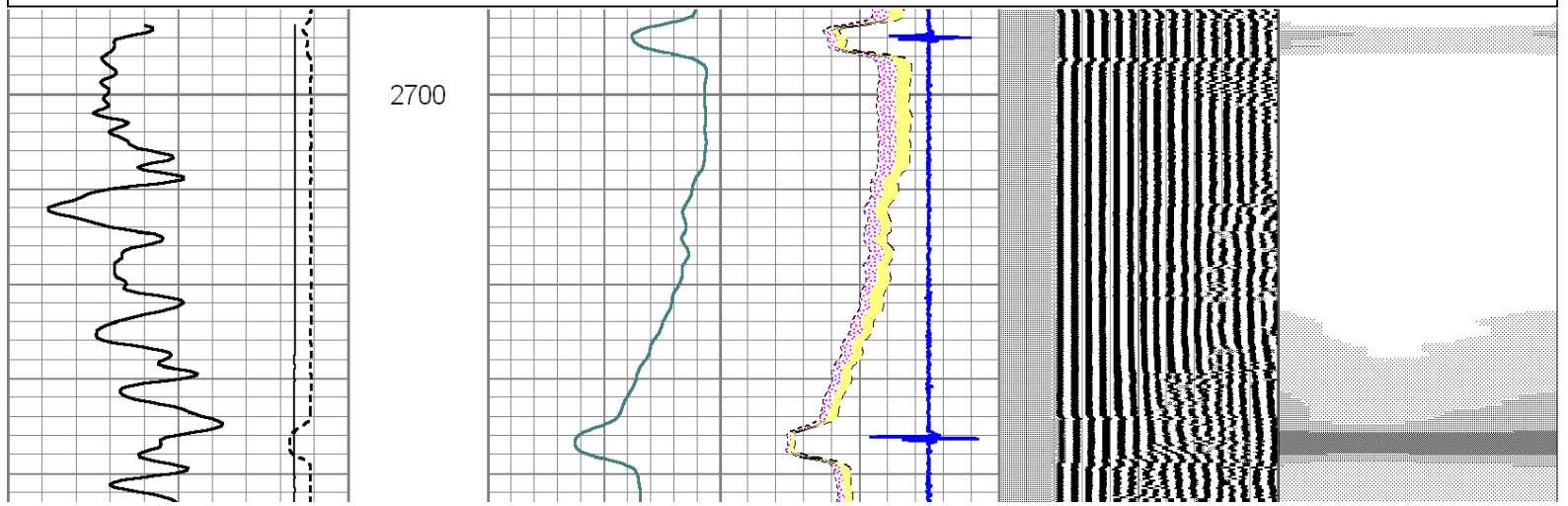
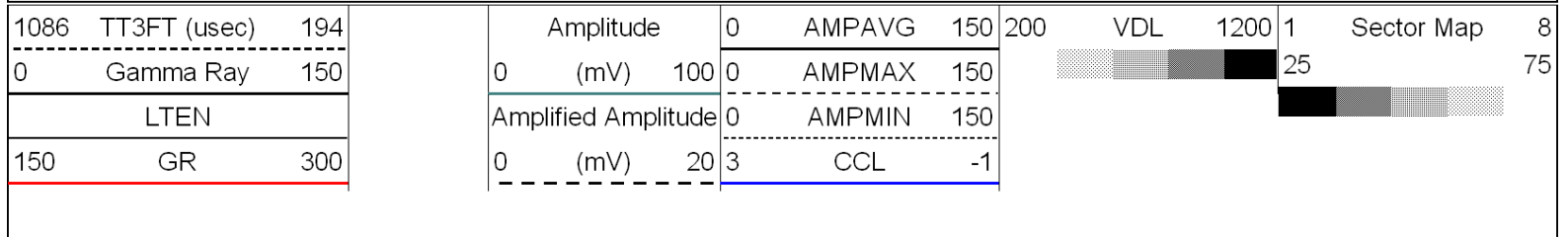
200 VDL 1200 1 Sector Map 8
 25 75

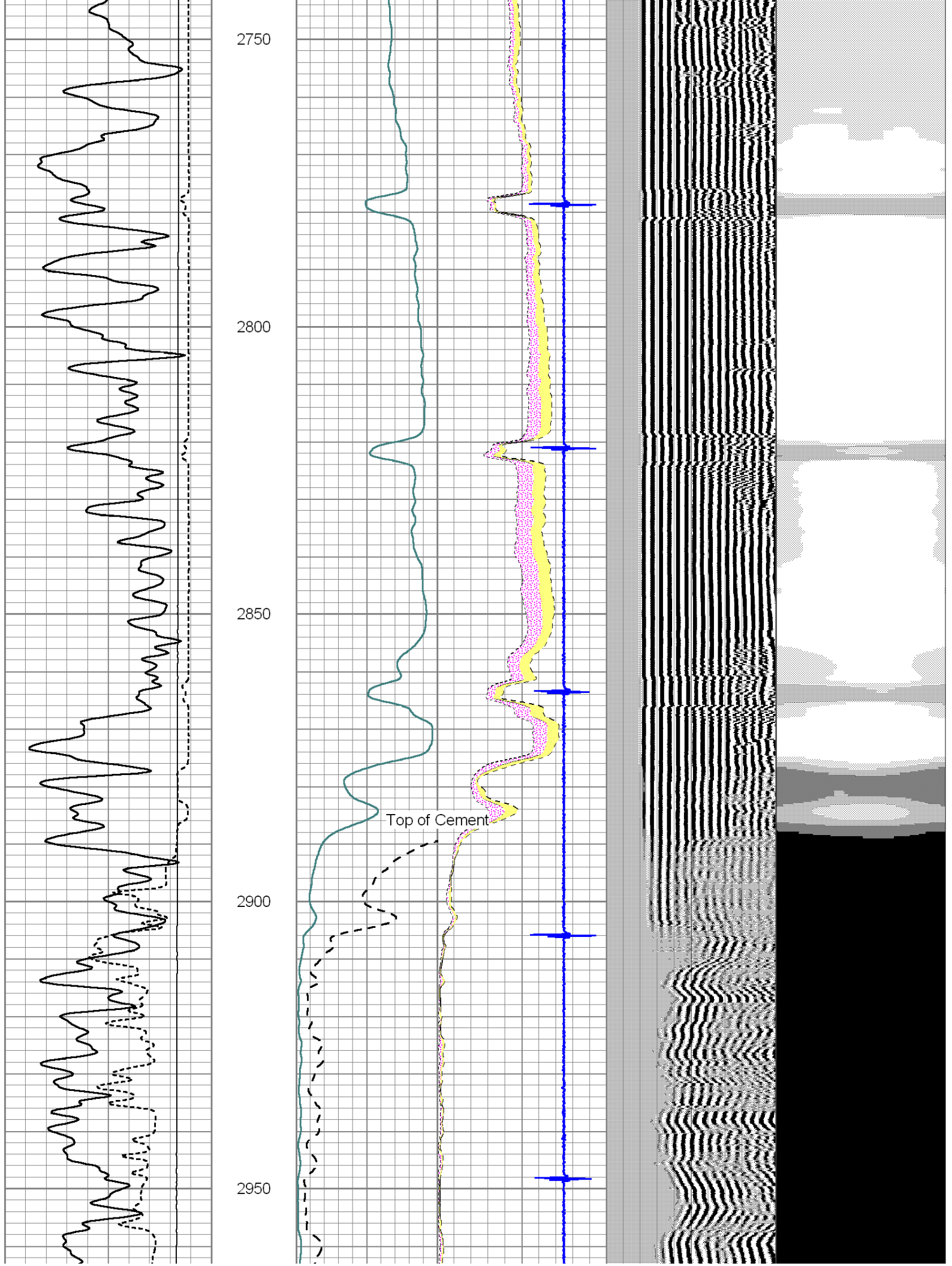


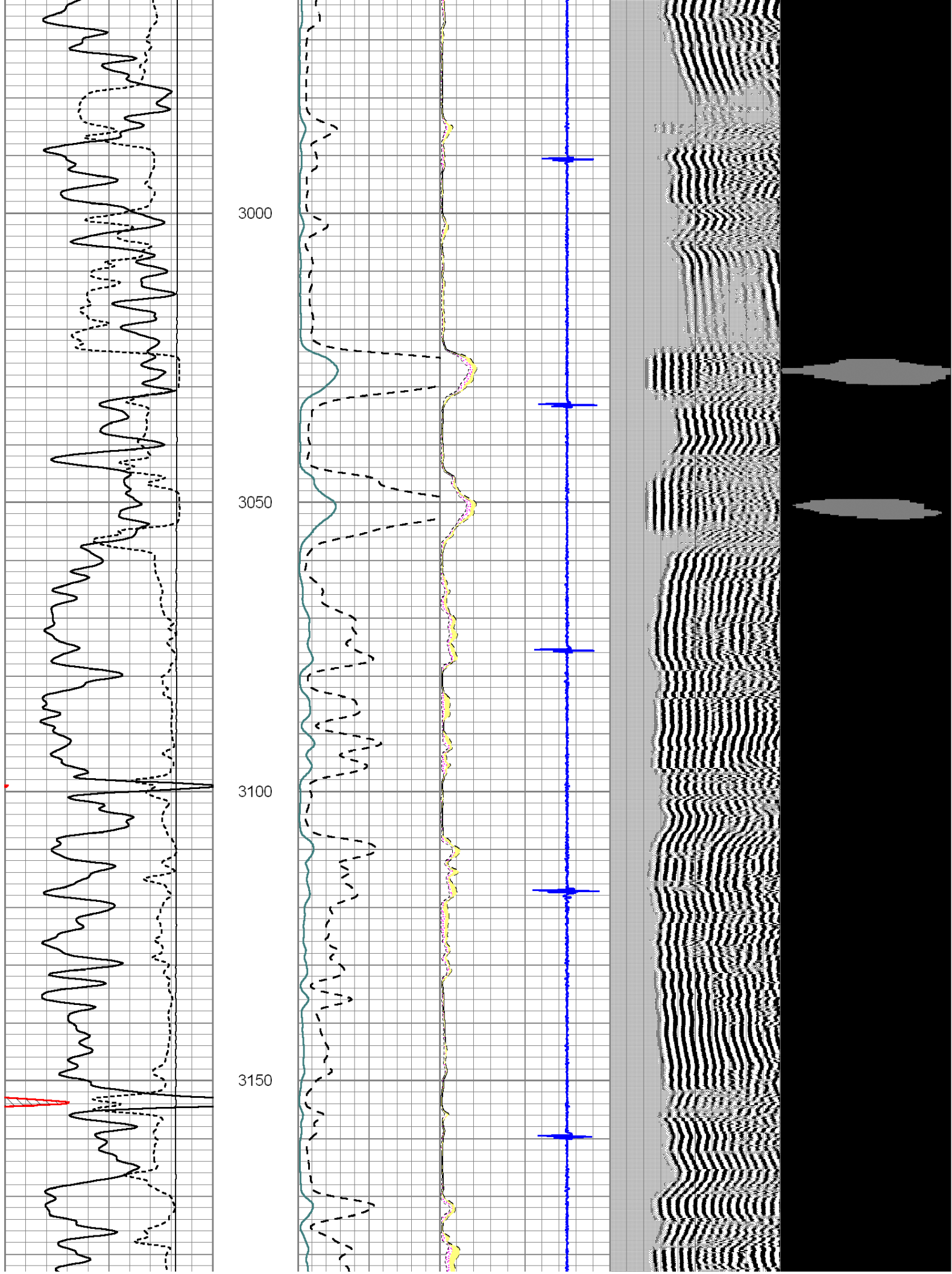


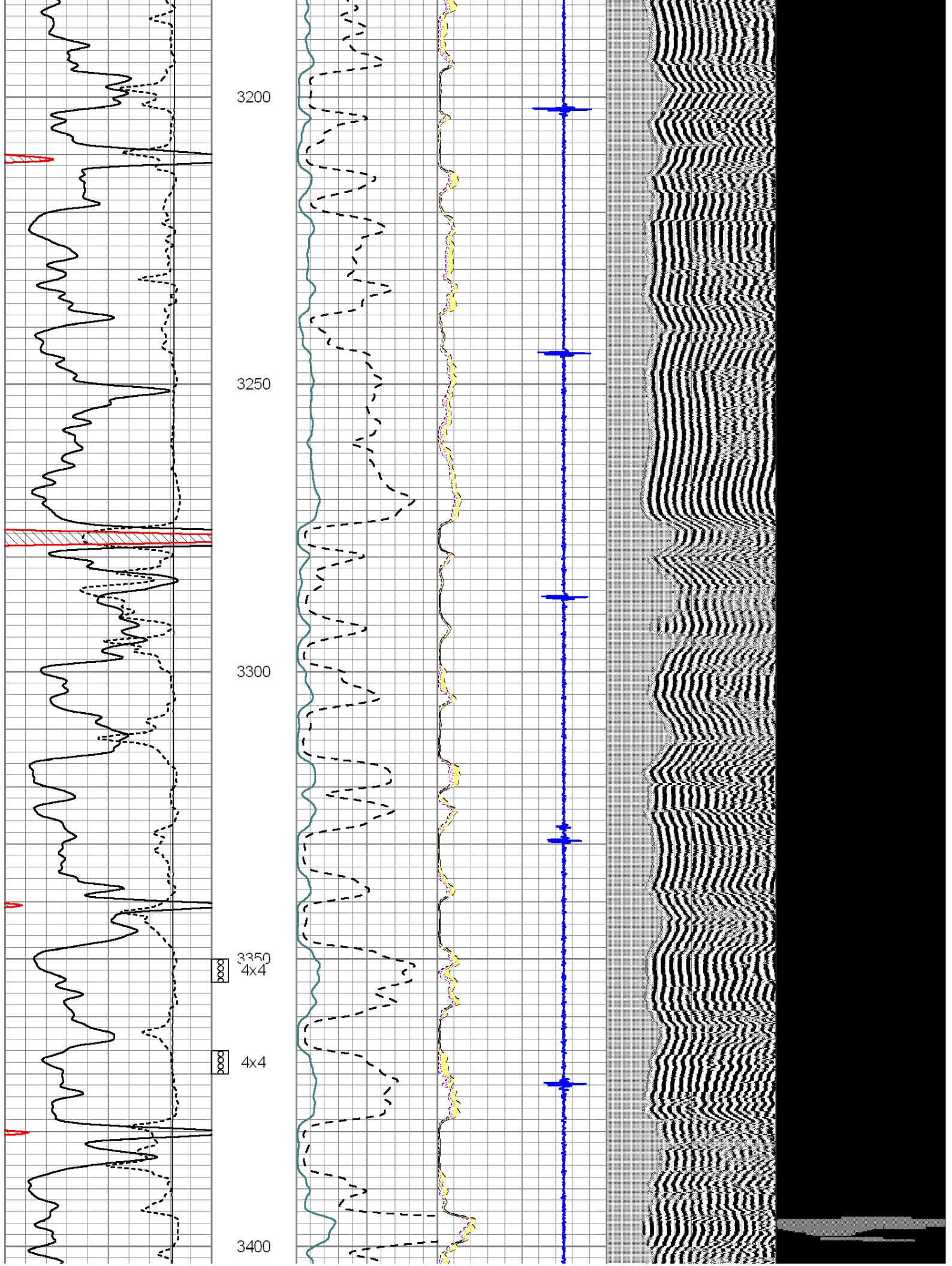
Main Pass

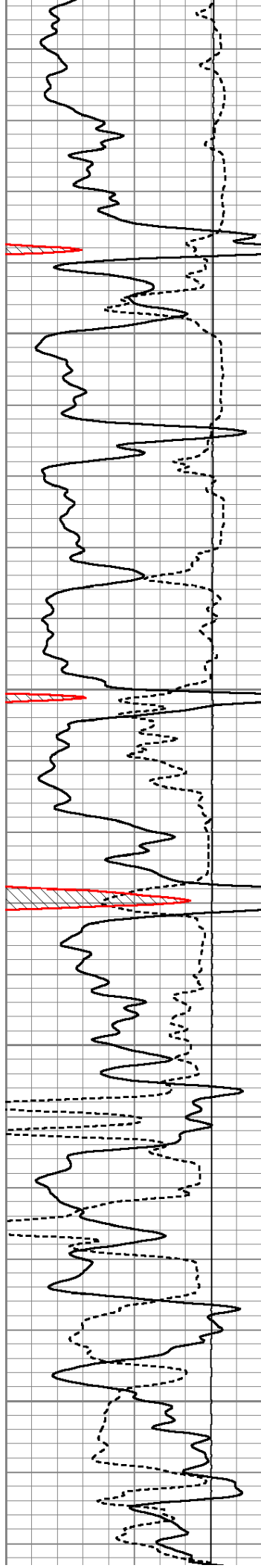
Database File: richlandoil_schonhaler_4_scbl.db
 Dataset Pathname: scbl/pass2
 Presentation Format: scbl18
 Dataset Creation: Tue May 20 18:03:23 2014 by Log Std Casedhole 09061
 Charted by: Depth in Feet scaled 1:240





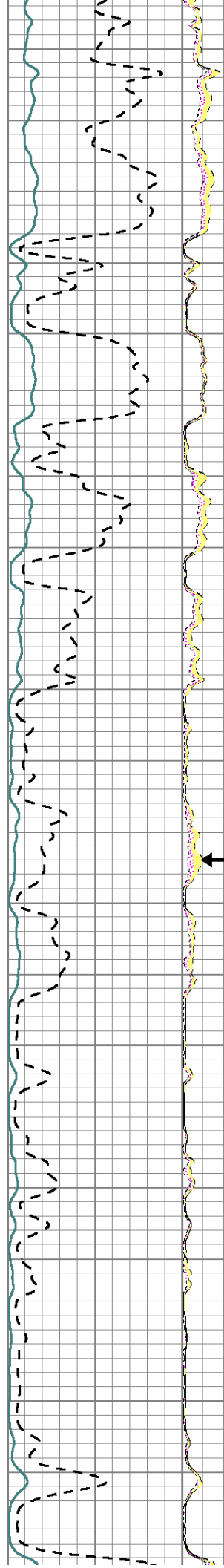






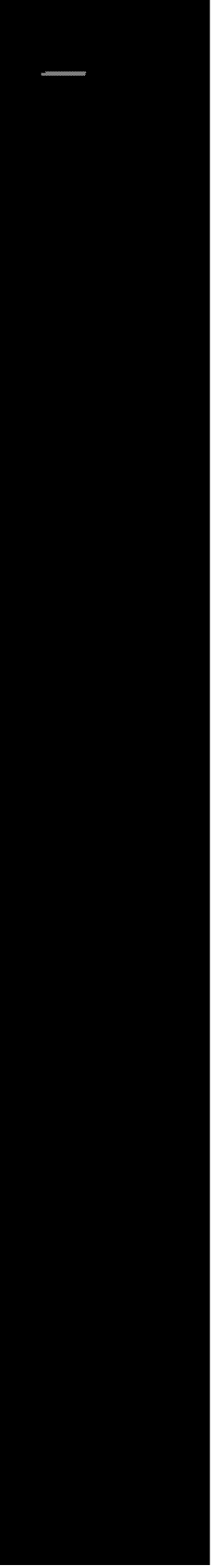
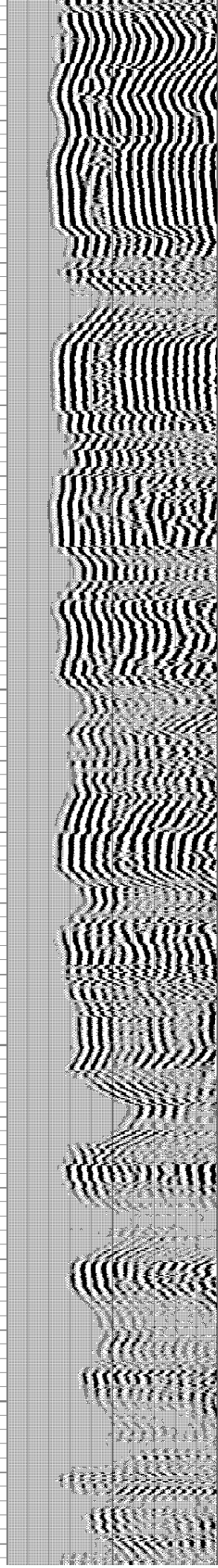
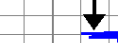
3450
3500
3550
3600

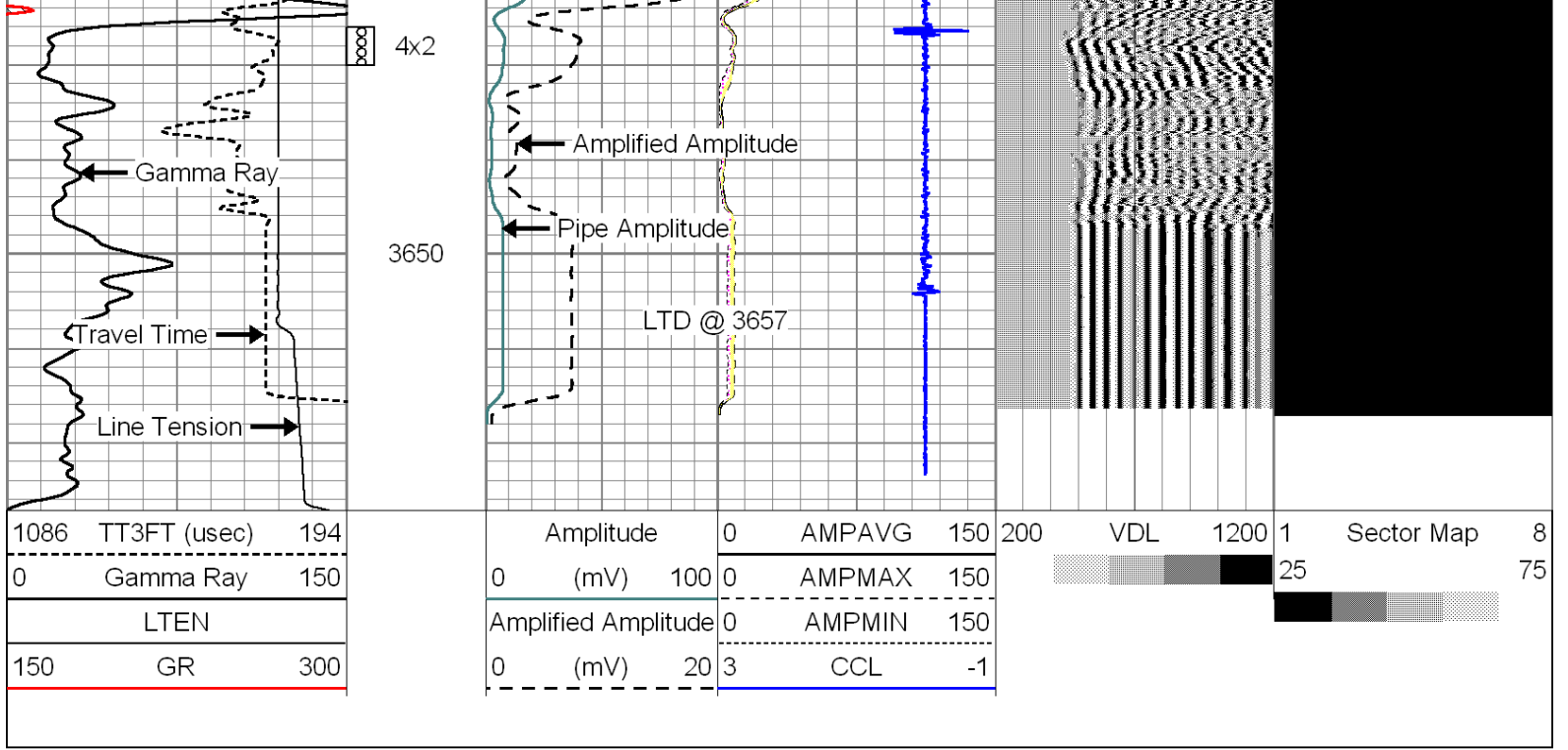
4x4



AMPAVG

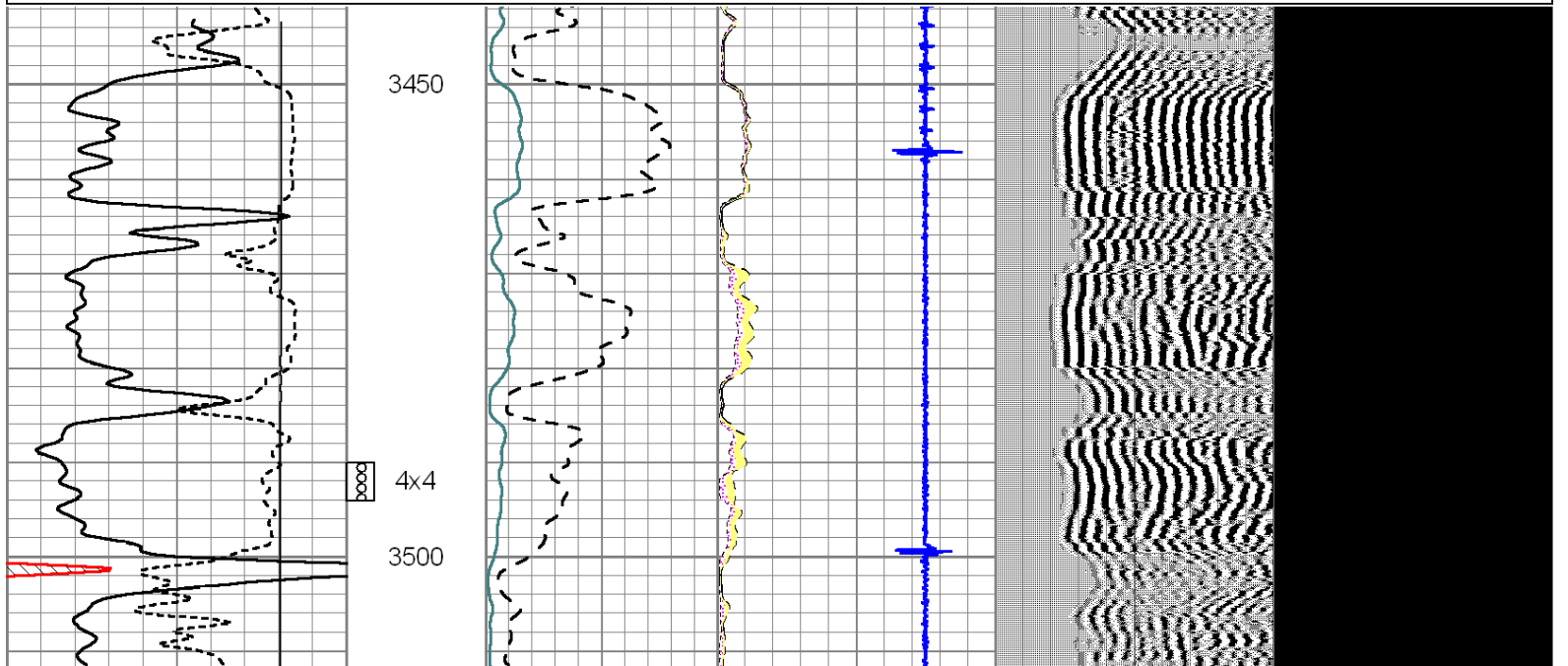
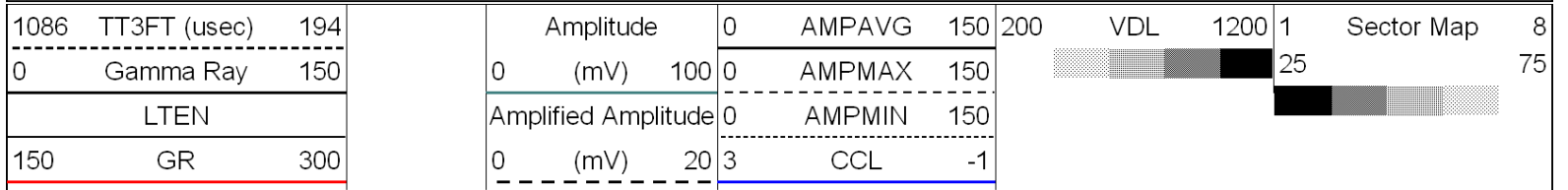
Casing Collars

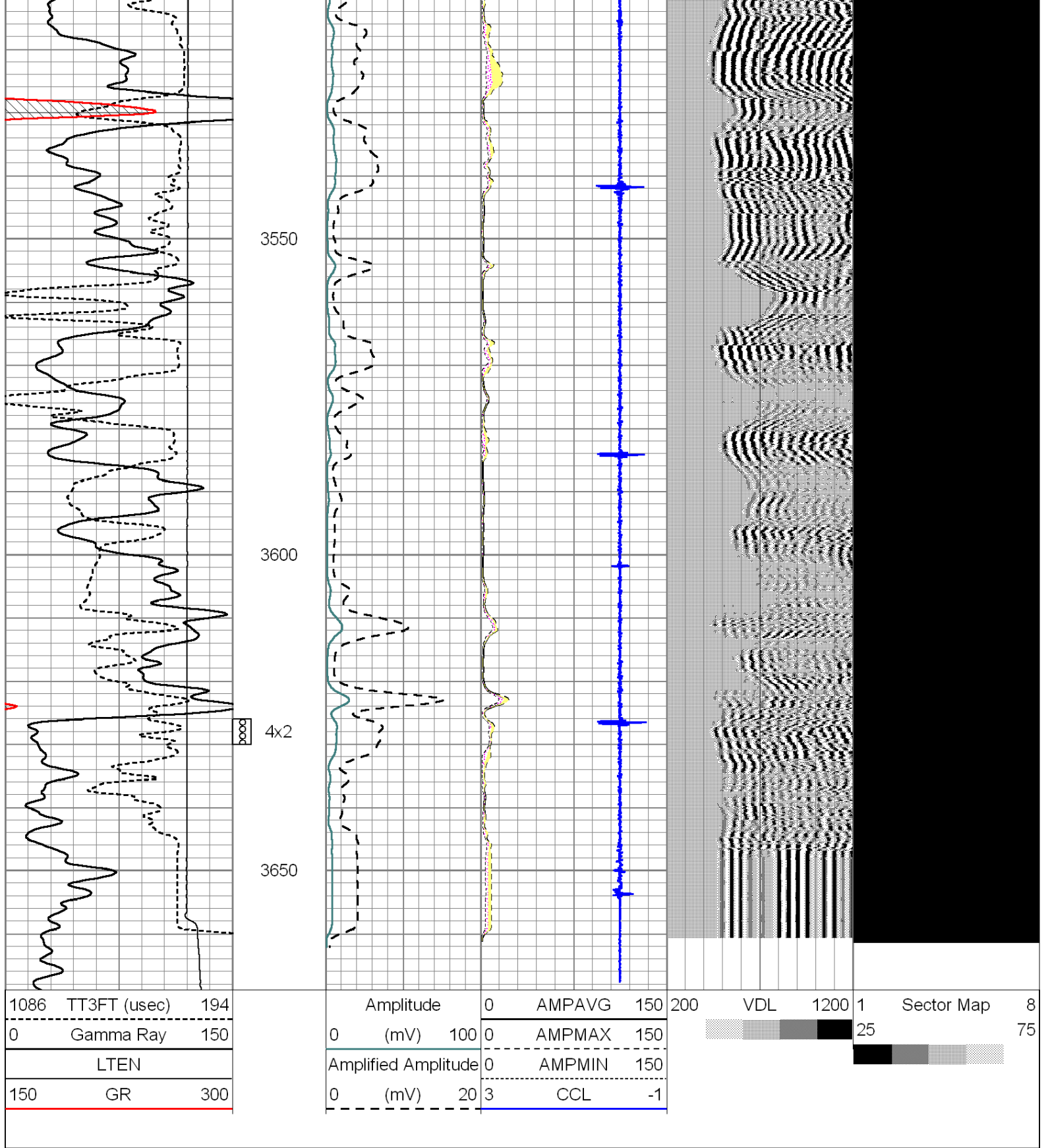




Repeat Section

Database File: richlandoil_schonhaler_4_scbl.db
 Dataset Pathname: scbl/pass1
 Presentation Format: scbl18
 Dataset Creation: Tue May 20 17:56:59 2014 by Log Std Casedhole 09061
 Charted by: Depth in Feet scaled 1:240





1086	TT3FT (usec)	194
0	Gamma Ray	150
LTEN		
150	GR	300

Amplitude	0	AMPAVG	150
(mV)	100	AMPMAX	150
Amplified Amplitude	0	AMPMIN	150
(mV)	20	CCL	-1

200	VDL	1200	1	Sector Map	8
			25		