

**COMPLETION
& PRODUCTION
SERVICES CO.**

**MICRO
LOG**

Company	DREILING OIL COMPANY, INC.	Company	DREILING OIL COMPANY, INC.
Well	KOHL A #2-11	Well	KOHL A #2-11
Field	KOHL	Field	KOHL
County	TREGO	County	TREGO
State	KANSAS	State	KANSAS
Location:	API # : 15-195-22925-0000	Other Services	CDL/CNL DIL
Permanent Datum	1750' FSL & 330' FWL N2-SW-NW-SW/4	Elevation	K.B. 2353 D.F. 2351 G.L. 2345
Log Measured From	GROUND LEVEL		
Drilling Measured From	KELLY BUSHING 8' A.G.L. KELLY BUSHING		
	SEC 11 TWP 12S RGE 21W		

Date	5/8/14
Run Number	TWO
Depth Driller	4100
Depth Logger	4102
Bottom Logged Interval	4100
Top Log Interval	3350
Casing Driller	8 5/8" @ 221
Casing Logger	219
Bit Size	7 7/8"
Type Fluid in Hole	CHEMICAL MUD
Density / Viscosity	9.3/57
pH / Fluid Loss	9.0/10.4
Source of Sample	FLOWLINE
Rm @ Meas. Temp	.60 @ 82F
Rmt @ Meas. Temp	.45 @ 82F
Rmc @ Meas. Temp	.72 @ 82F
Source of Rmf / Rmc	MEASUREMENT
Rm @ BHT	.42 @ 117F
Time Circulation Stopped	2 HOURS
Time Logger on Bottom	
Maximum Recorded Temperature	117F
Equipment Number	4010
Location	HAYS, KANSAS
Recorded By	JASON CAPPELLUCCI
Witnessed By	ROGER FISHER

<<< Fold Here >>>

All interpretations are opinions based on inferences from electrical or other measurements and we cannot and do not guarantee the accuracy or correctness of any interpretation, and we shall not, except in the case of gross or willful negligence on our part, be liable or responsible for any loss, costs, damages, or expenses incurred or sustained by anyone resulting from any interpretation made by any of our officers, agents or employees. These interpretations are also subject to our general terms and conditions set out in our current Price Schedule.

Comments

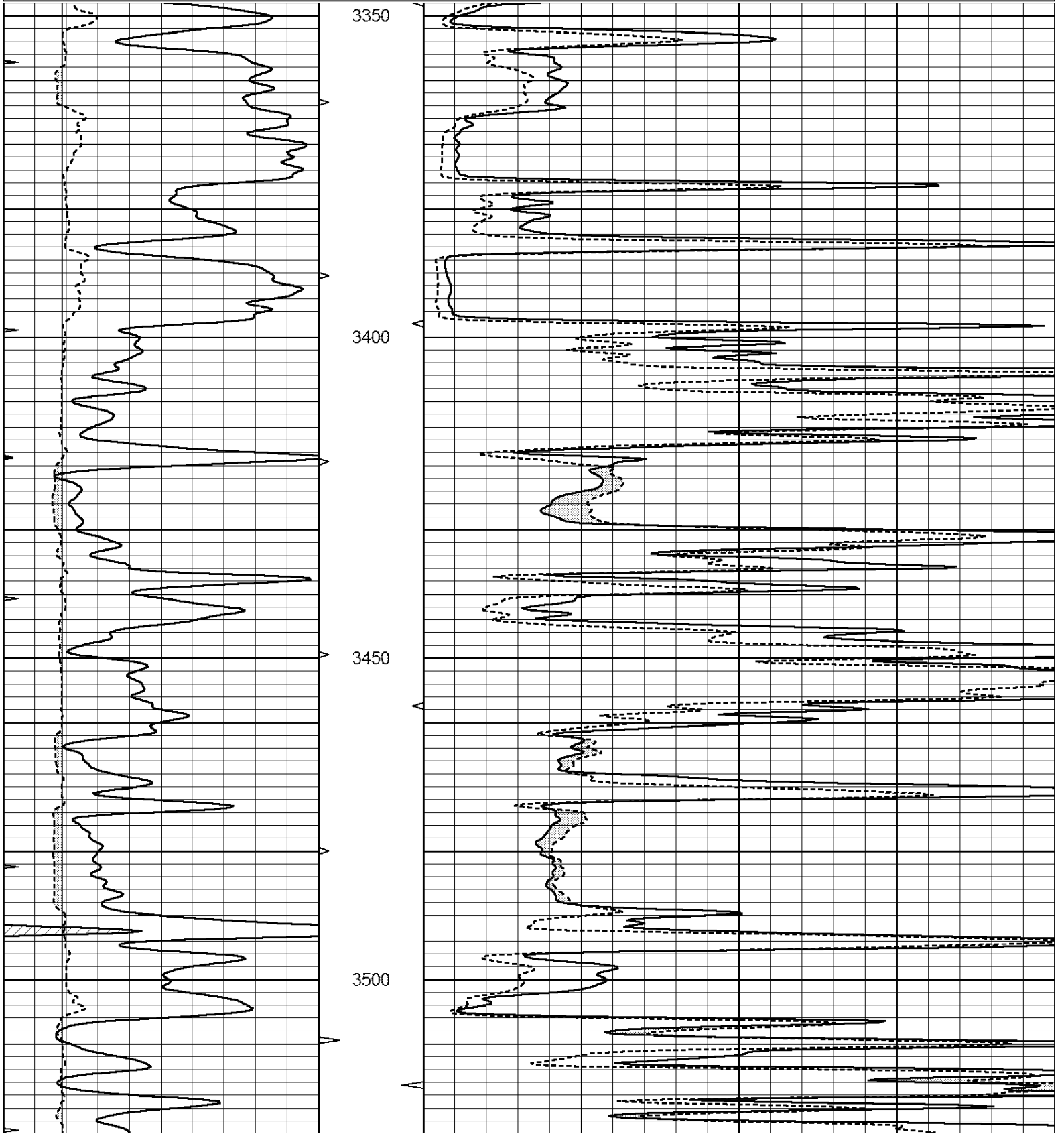
THANK YOU FOR USING NABORS, HAYS, KS. (785) 628-6395
DIRECTIONS:
I 70 @ RIGA EXIT - 3 NORTH - 1 EAST - 1/4 NORTH - EAST INTO

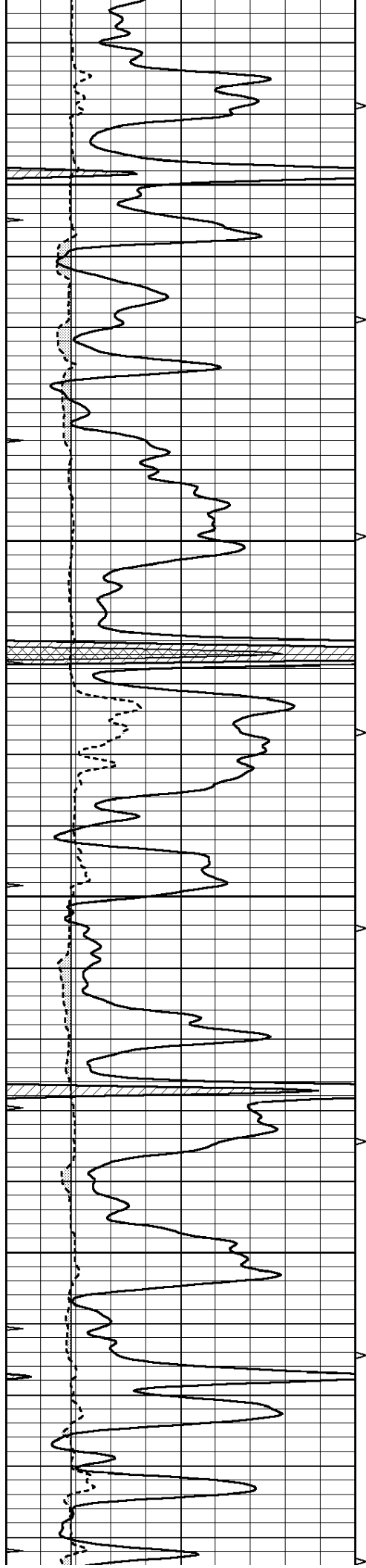


MAIN SECTION

Database File: 24240ddn.db
 Dataset Pathname: pass6.1
 Presentation Format: _micro
 Dataset Creation: Thu May 08 10:30:07 2014 by Calc Open-Cased 090629
 Charted by: Depth in Feet scaled 1:240

0	GAMMA RAY (GAPI)	150	ABHV	0	MEL1.5 (Ohm-m)	40
6	CALIPER (in)	16	10 (ft3)	0	MEL2.0 (Ohm-m)	40
0	MINMK	20	TBHV			
			0 (ft3)	10		



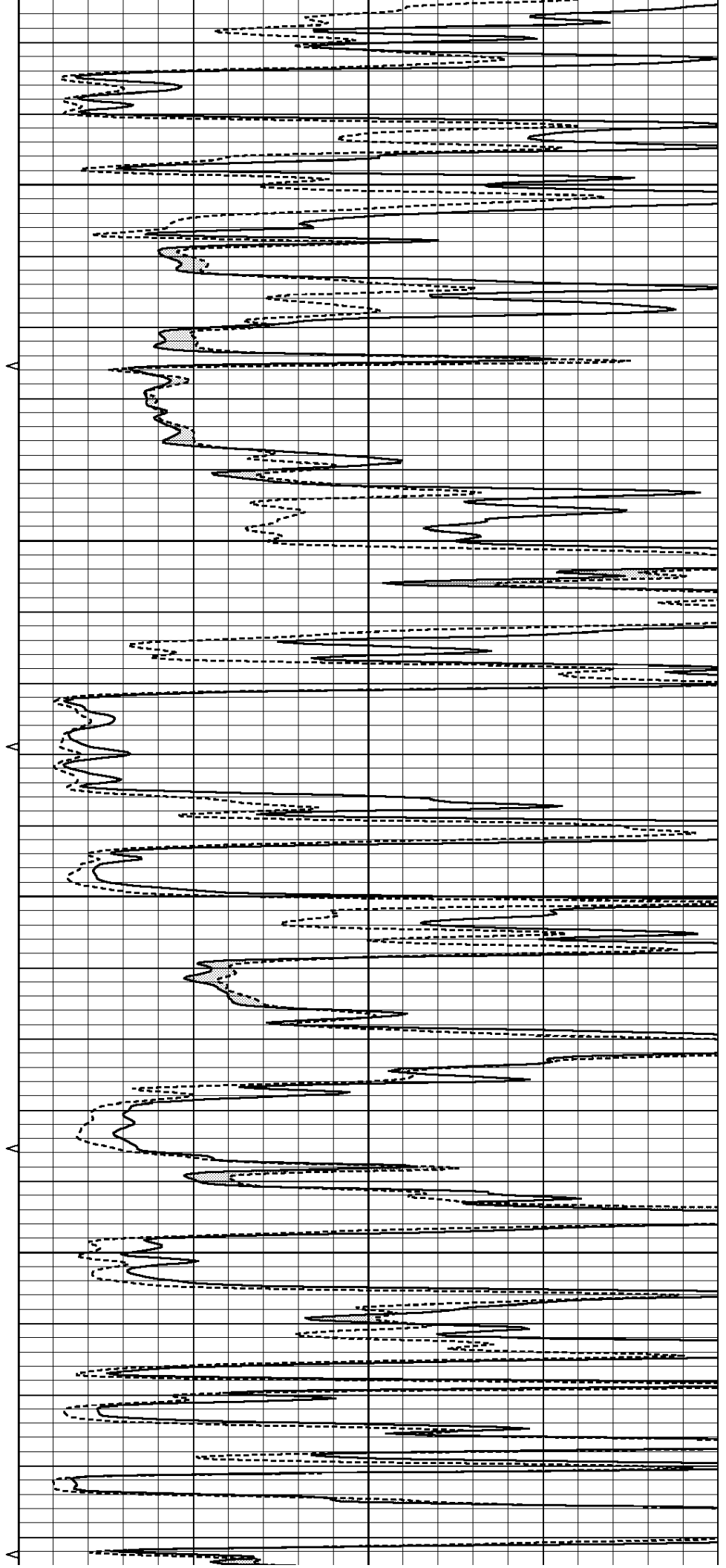


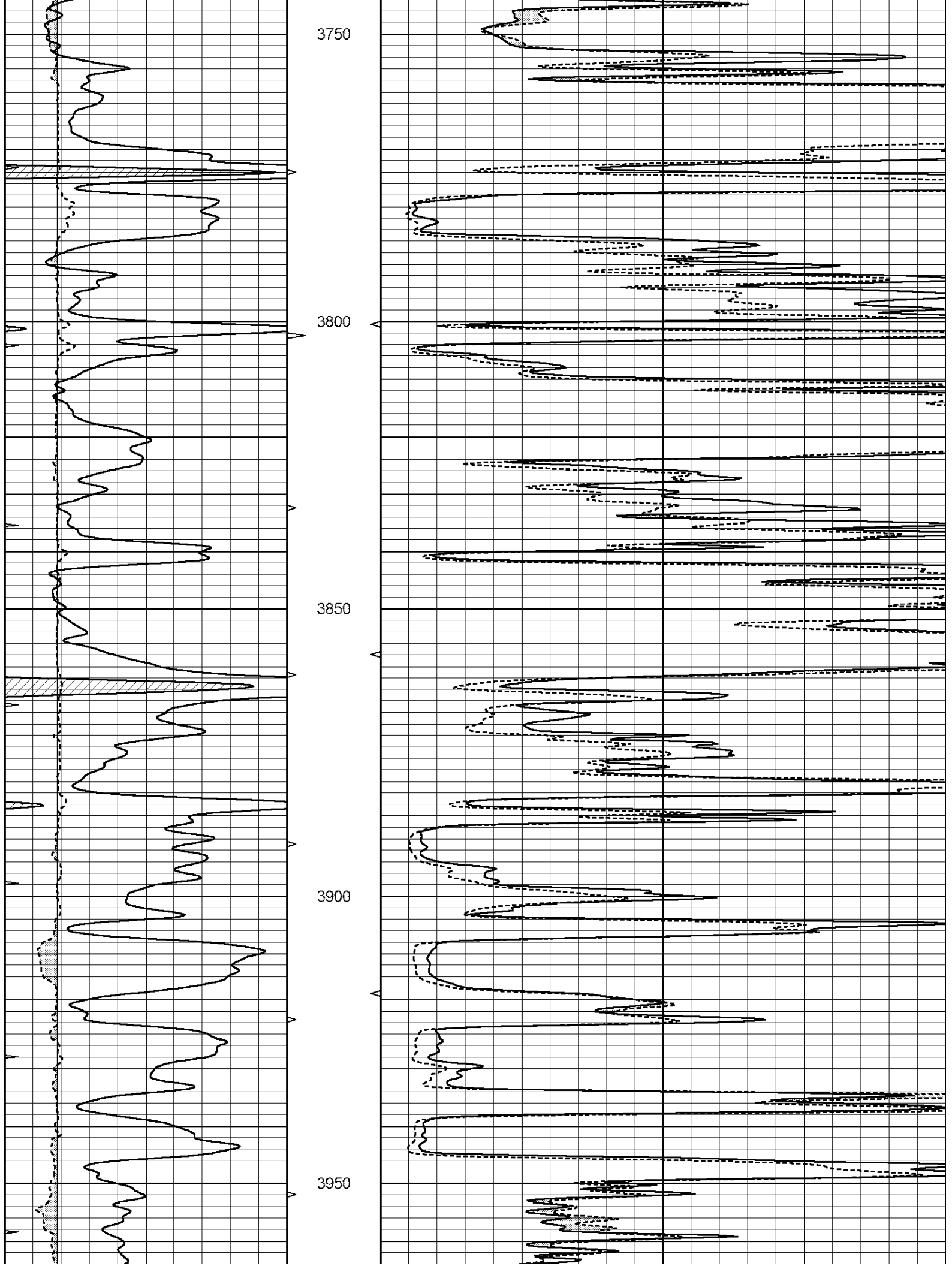
3550

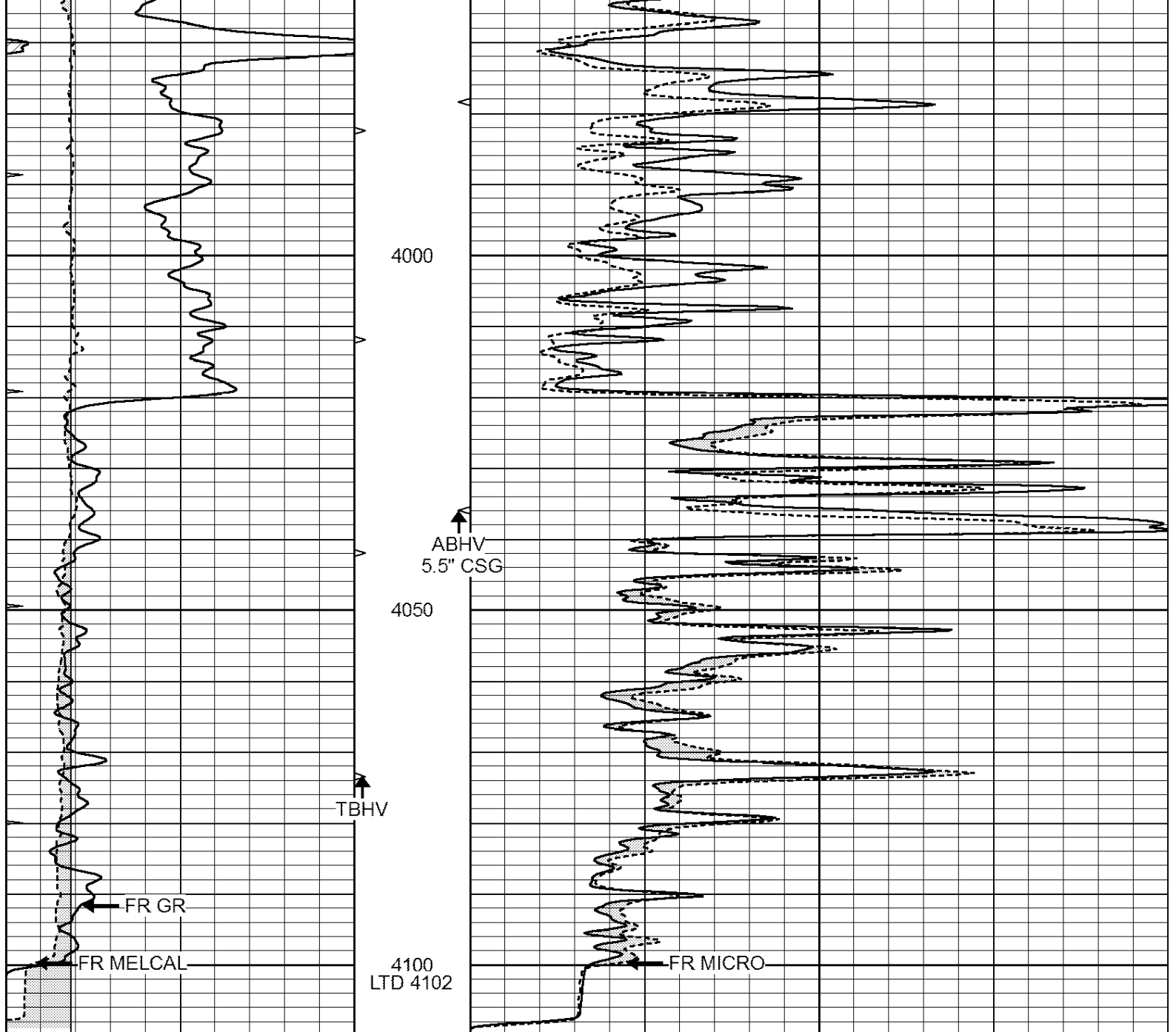
3600

3650

3700







0	GAMMA RAY (GAPI)	150	ABHV	0	MEL1.5 (Ohm-m)	40
6	CALIPER (in)	16	10 (ft3)	0	MEL2.0 (Ohm-m)	40
0	MINMK	20	TBHV			
			0 (ft3)	10		

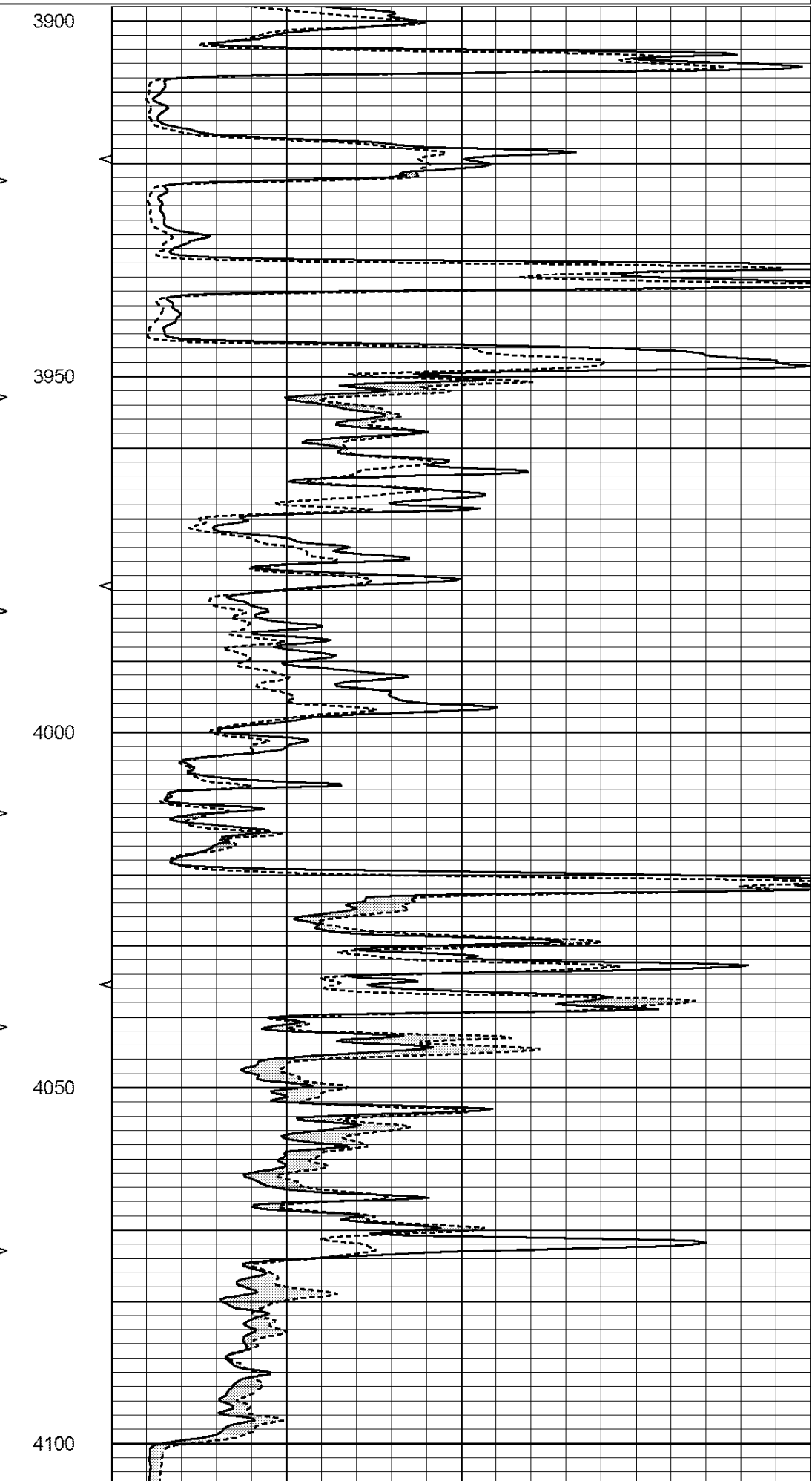
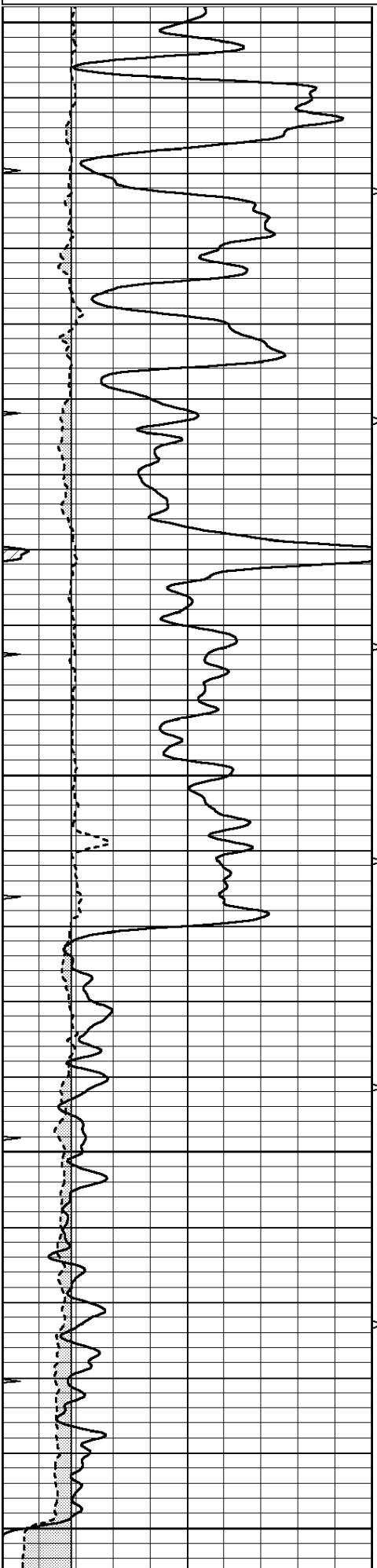


REPEAT SECTION

Database File: 24240ddn.db
 Dataset Pathname: pass5.1
 Presentation Format: _micro
 Dataset Creation: Thu May 08 10:29:43 2014 by Calc Open-Cased 090629
 Charted by: Depth in Feet scaled 1:240

0	GAMMA RAY (GAPI)	150	ABHV	0	MEL1.5 (Ohm-m)	40
6	CALIPER (in)	16	10 (ft3)	0	MEL2.0 (Ohm-m)	40

0 MINMK 20 TBHV
0 (ft3) 10



0	GAMMA RAY (GAPI)	150	ABHV	0	MEL1.5 (Ohm-m)	40
6	CALIPER (in)	16	10 (ft3) 0	0	MEL2.0 (Ohm-m)	40
0	MINMK	20	TBHV			
			0 (ft3) 10			

Calibration Report

Database File: 24240ddn.db
Dataset Pathname: pass5.1
Dataset Creation: Thu May 08 10:29:43 2014 by Calc Open-Cased 090629

MICRO Calibration Report

Serial Number: MICRO6
Tool Model: PROBE
Performed: Fri Mar 14 21:54:54 2014

Caliper Calibration: Gain=5.542 Offset=-0.820

	Low Cal	High Cal
References	8.000	14.000
Readings	1.431	2.513

1.5" Calibration: Gain=38.075 Offset=0.000

	Low Cal	High Cal
References	0.000	20.000
Readings	0.004	1.196

2" Calibration: Gain=44.000 Offset=-0.600

	Low Cal	High Cal
References	0.000	20.000
Readings	0.006	0.913

Gamma Ray Calibration Report

Serial Number: GR6
Tool Model: OPEN
Performed: Tue May 06 06:07:07 2014

Calibrator Value: 150.0 GAPI

Background Reading:	0.0	cps
Calibrator Reading:	276.0	cps

Sensitivity: 0.8035 GAPI/cps