



Pioneer Energy Services

Microresistivity Log

15-159-22,783-00-00

API No.

Company **Mike Kelso Oil, Inc.**

Well **Meyer Ankerholz #13**

Field **Geneseo-Edwards**

County **Rice** State **Kansas**

Location **1,650' FSL & 330' FWL**

Sec: **30** Twp: **18S** Rge: **7W**

Permanent Datum **Ground Level** Elevation **1717**

Log Measured From **Kelly Bushing** 7 Ft. Above Perm. Datum

Drilling Measured From **Kelly Bushing**

Other Services
CNL/CDL
DIL
Elevation
K.B. 1724
D.F. 1717
G.L. 1717

Date	5/15/2014
Run Number	Two
Depth Driller	3345
Depth Logger	3345
Bottom Logged Interval	3344
Top Log Interval	2400
Casing Driller	8.625 @ 370
Casing Logger	370
Bit Size	7.875
Type Fluid in Hole	Chemical
Salinity, ppm CL	6000
Density / Viscosity	9.2 56
pH / Fluid Loss	9.5 8.8
Source of Sample	Flowline
Rm @ Meas. Temp	.72 @ 78
Rmf @ Meas. Temp	.54 @ 78
Rmc @ Meas. Temp	.97 @ 78
Source of Rmf / Rmc	Charts
Rm @ BHT	.51 @ 109
Operating Rig Time	4 Hours
Max Rec. Temp. F	109
Equipment Number	108
Location	Hays
Recorded By	J. Long
Witnessed By	Bruce Basye

<<< Fold Here >>>

All interpretations are opinions based on inferences from electrical or other measurements and we cannot and do not guarantee the accuracy or correctness of any interpretation, and we shall not, except in the case of gross or willful negligence on our part, be liable or responsible for any loss, costs, damages, or expenses incurred or sustained by anyone resulting from any interpretation made by any of our officers, agents or employees. These interpretations are also subject to our general terms and conditions set out in our current Price Schedule.

Comments

Thank you for using Pioneer Energy Services
www.pioneerres.com
785 625 3858

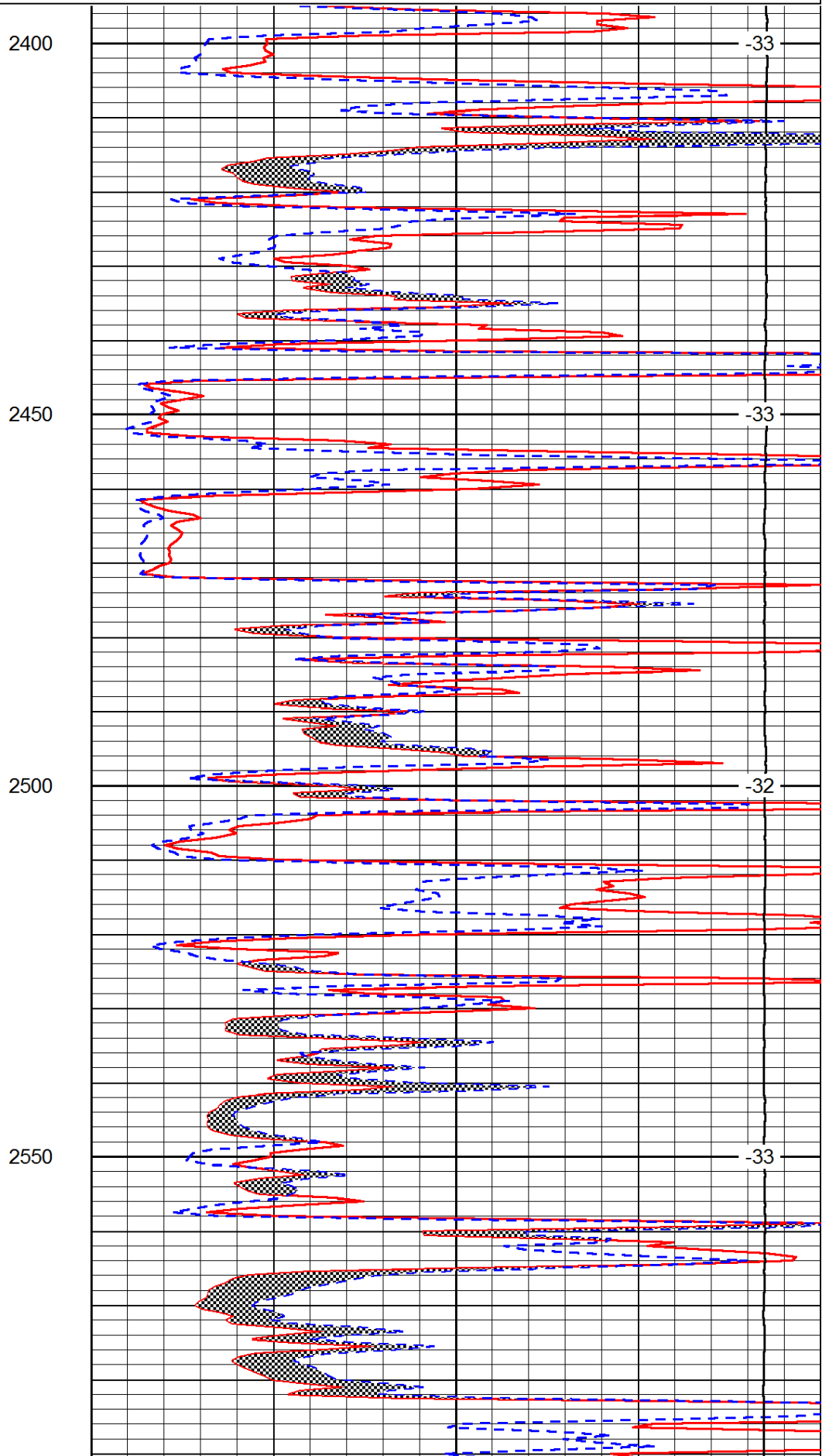
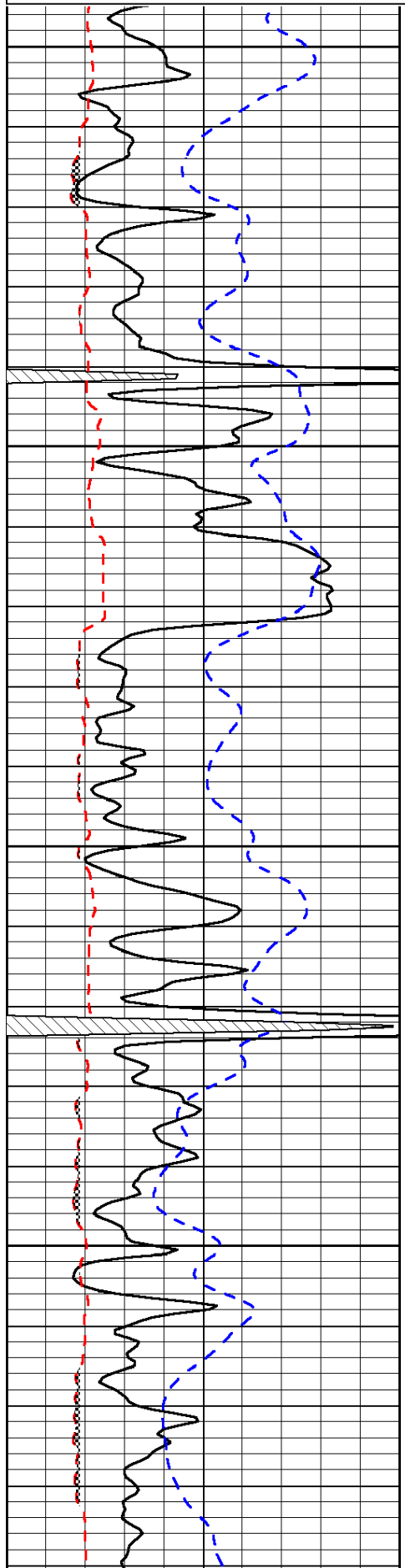
Geneseo, (East side of town) 4 3/4 South on 19th Road, East Into

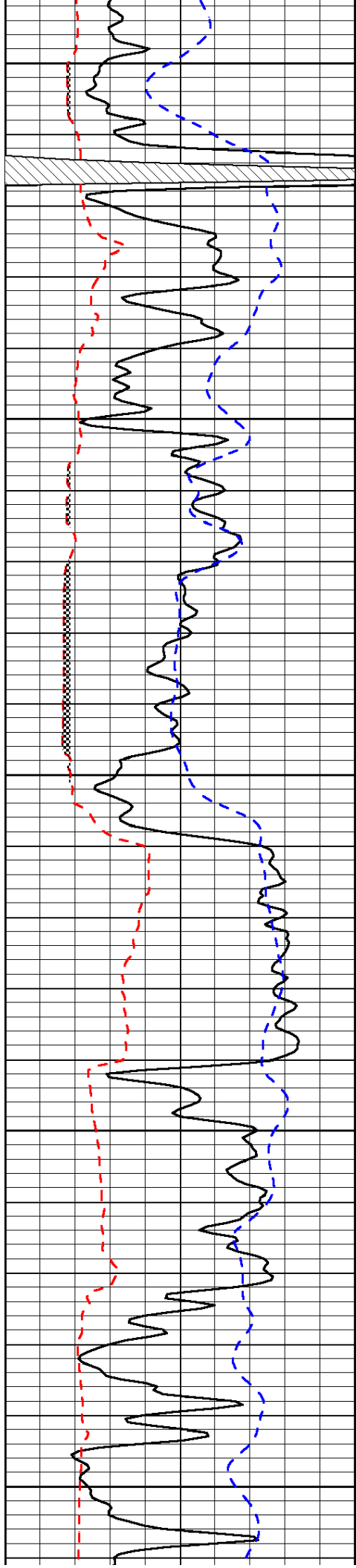
Database File: c:\warrior\data\mike kelso oil_meyer ankerholz #13\mikekelsooil_meyerankerholz_13hd.db
 Dataset Pathname: dil/mikestck
 Presentation Format: micro
 Dataset Creation: Thu May 15 15:15:31 2014
 Charted by: Depth in Feet scaled 1:240

0	Gamma Ray	150
6	Micro Log Caliper (GAPI)	16
-200	SP (mV)	0

0	Micro Inverse 1 X 1	40
0	Micro Normal 2"	40
15000	Line Weight	0

LSPD





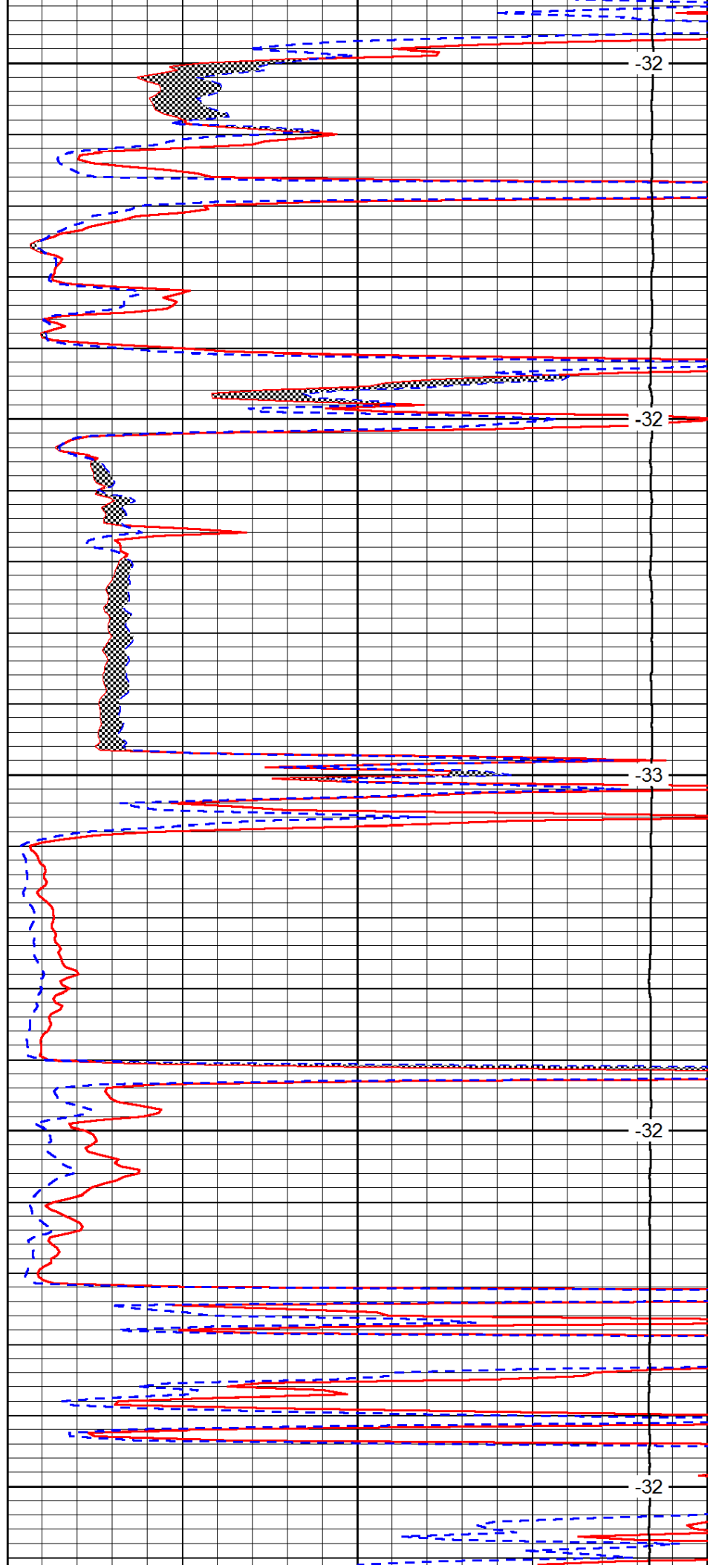
2600

2650

2700

2750

2800



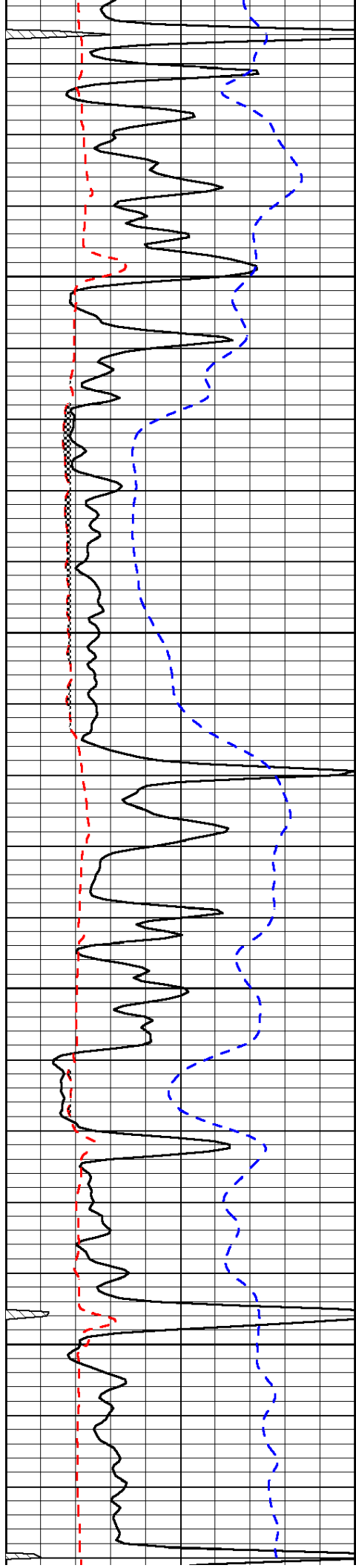
-32

-32

-33

-32

-32

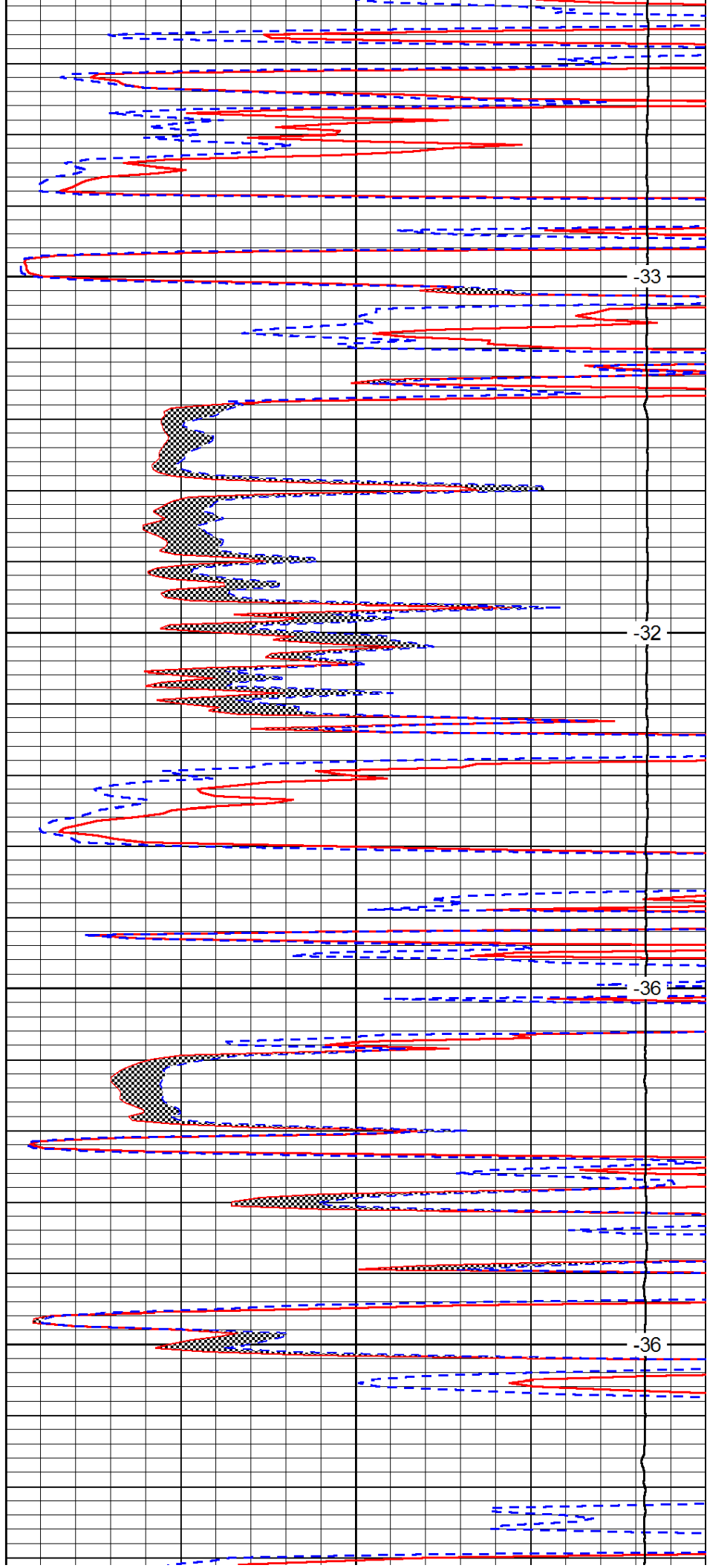


2850

2900

2950

3000

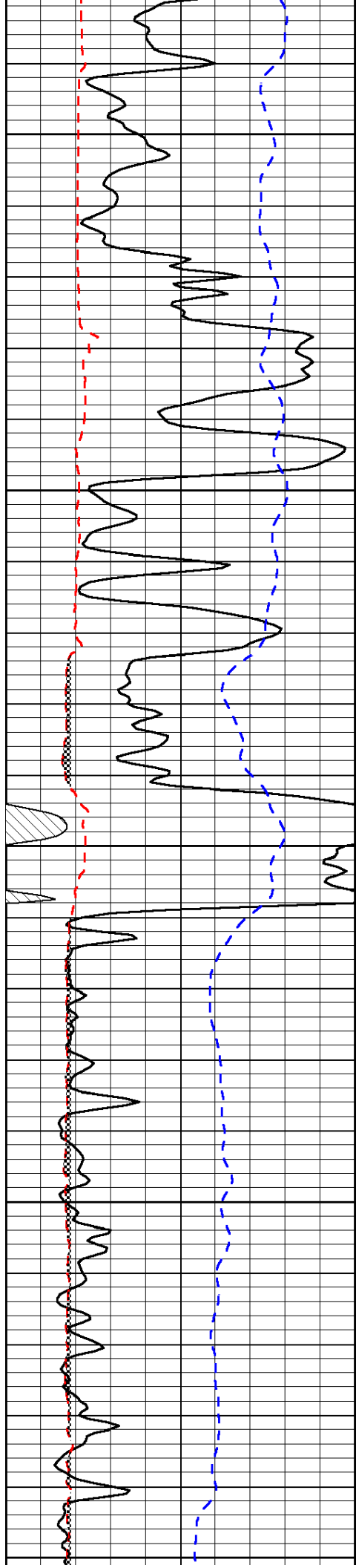


-33

-32

-36

-36



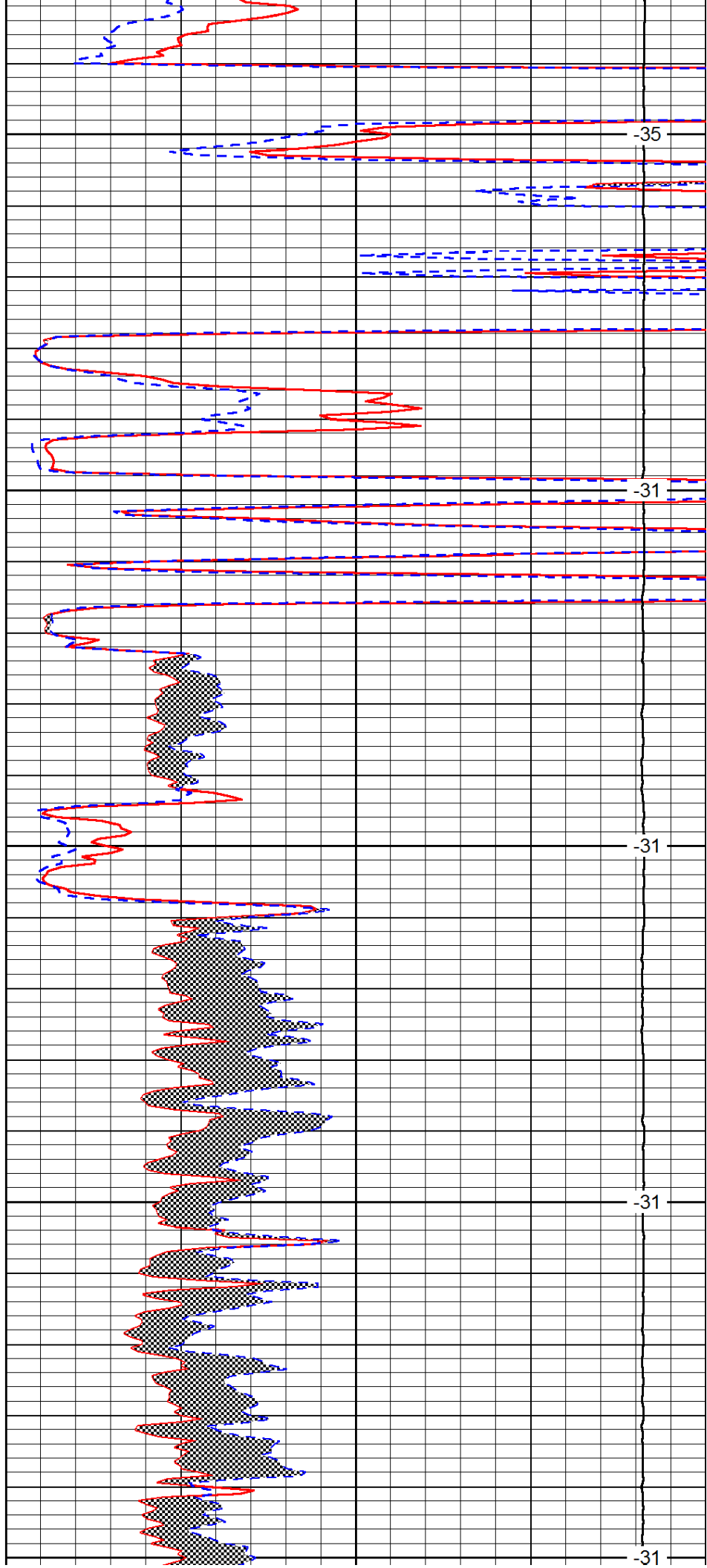
3050

3100

3150

3200

3250



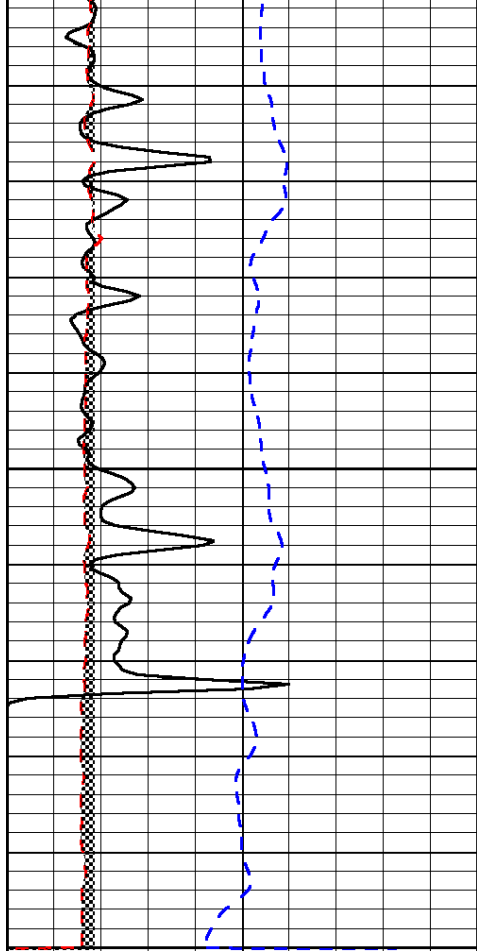
-35

-31

-31

-31

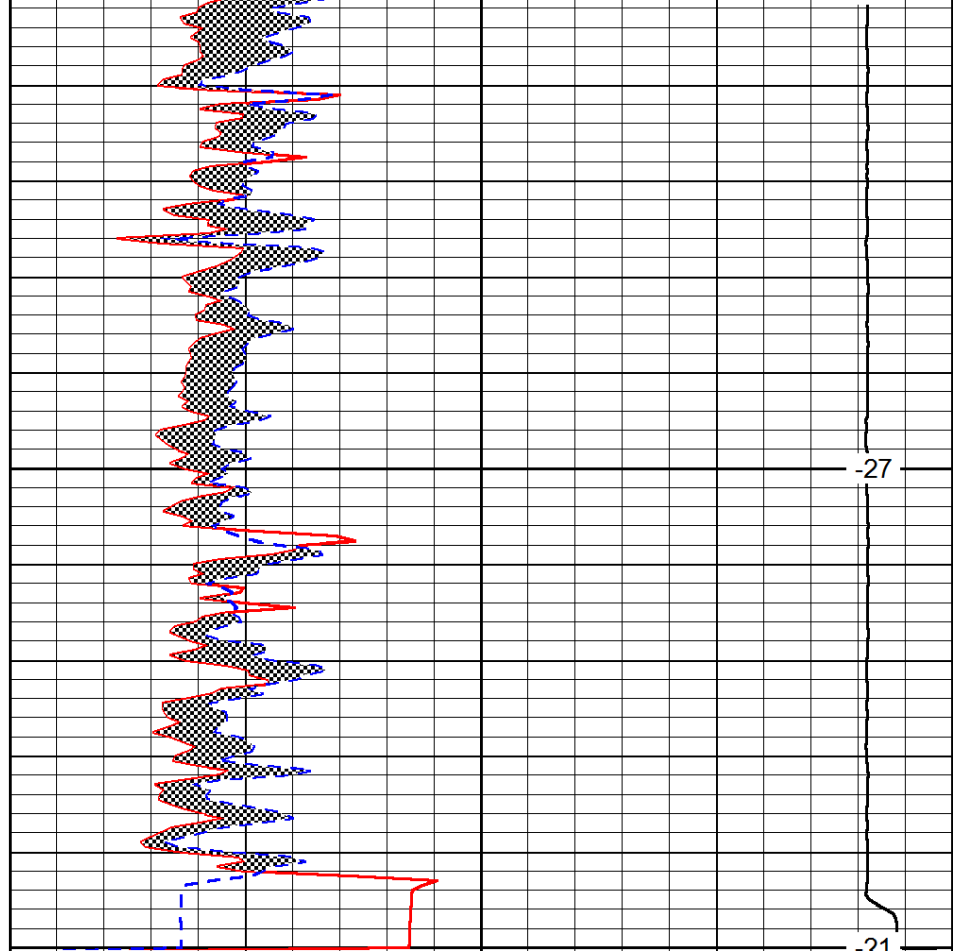
-31



0	Gamma Ray	150
6	Micro Log Caliper (GAPI)	16
-200	SP (mV)	0

3300

3350



-27

-21

0	Micro Inverse 1 X 1	40
0	Micro Normal 2"	40
15000	Line Weight	0

LSPD