



Pioneer Energy Services

Dual Compensated Porosity Log

15-159-22,783-00-00

API No.

Company **Mike Kelso Oil, Inc.**
 Well **Meyer Ankerholz #13**
 Field **Geneseo-Edwards**
 County **Rice** State **Kansas**

Location **1,650' FSL & 330' FWL**
 Sec: **30** Twp: **18S** Rge: **7W**

Other Services
 DIL
 MEL

Permanent Datum **Ground Level** Elevation **1717**
 Log Measured From **Kelly Bushing** **7** Ft. Above Perm. Datum
 Drilling Measured From **Kelly Bushing**

Elevation
 K.B. **1724**
 D.F. **1717**
 G.L. **1717**

Date	5/15/2014	
Run Number	One	
Type Log	CNL / CDL	
Depth Driller	3345	
Depth Logger	3345	
Bottom Logged Interval	3324	
Top Logged Interval	2400	
Type Fluid In Hole	Chemical	
Salinity, PPM CL	6000	
Density	9.2	
Level	Full	
Max. Rec. Temp. F	109	
Operating Rig Time	4 Hours	
Equipment -- Location	108 Hays	
Recorded By	J. Long	
Witnessed By	Bruce Basye	

Borehole Record			Casing Record				
Run No.	Bit	From	To	Size	Wgt.	From	To
1	12.25	00	370	8.625	24#	00	370
2	7.875	370	3345				

<<< Fold Here >>>

All interpretations are opinions based on inferences from electrical or other measurements and we cannot and do not guarantee the accuracy or correctness of any interpretation, and we shall not, except in the case of gross or willful negligence on our part, be liable or responsible for any loss, costs, damages, or expenses incurred or sustained by anyone resulting from any interpretation made by any of our officers, agents or employees. These interpretations are also subject to our general terms and conditions set out in our current Price Schedule.

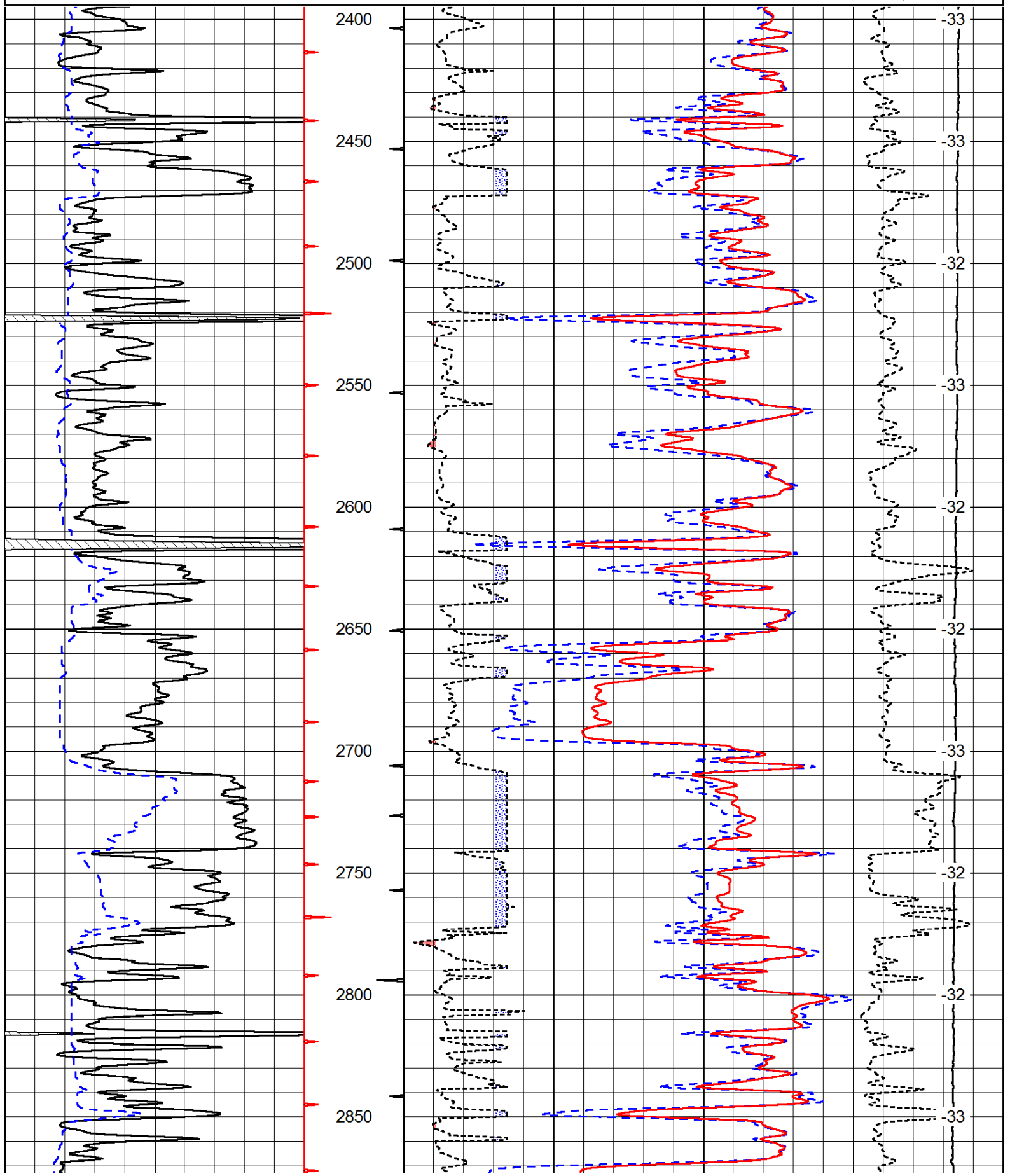
Comments

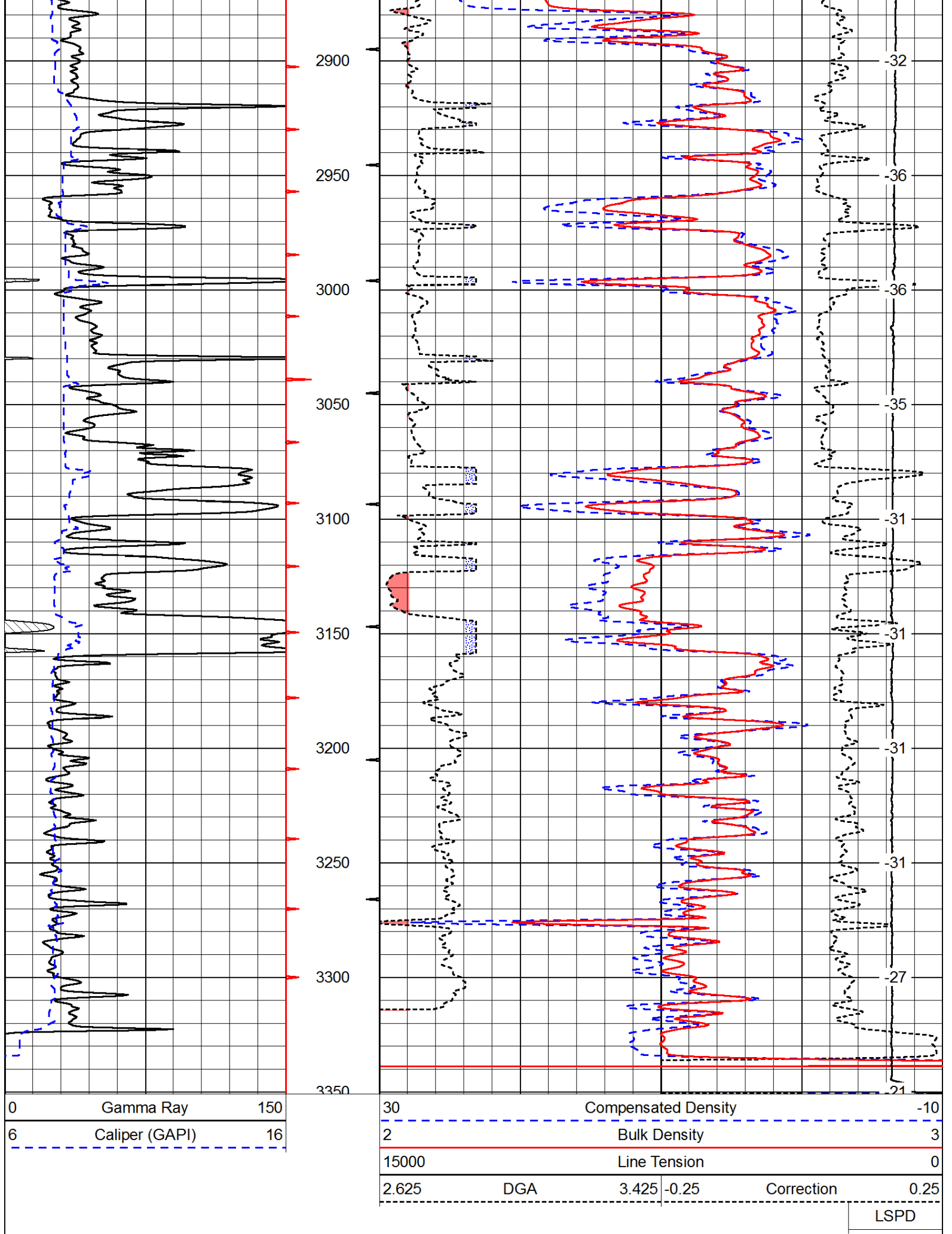
Thank you for using Pioneer Energy Services
www.pioneerenergy.com
 785 625 3858

Geneseo, (East side of town) 4 3/4 South on 19th Road, East Into

0	Gamma Ray	150
6	Caliper (GAPI)	16

30	Compensated Density		-10
2	Bulk Density		3
15000	Line Tension		0
2.625	DGA	3.425	-0.25
		Correction	0.25
			LSPD





Database File: c:\warrior\data\mike kelso oil_meyer ankerholz #13\mikekelsooil_meyerankerholz_13hd.db
 Dataset Pathname: dil/mikestck
 Presentation Format: cndlspec
 Dataset Creation: Thu May 15 15:15:31 2014
 Charted by: Depth in Feet scaled 1:240

0	Gamma Ray	150	30	Compensated Neutron (Limestone)		-10
6	Caliper (GAPI)	16	30	Compensated Density (Limestone)		-10
2.625		DGA	3.425	-0.25	Correction	0.25
15000			Line Tension		0	

LSPD

