



Pioneer Energy Services

Dual Induction Log

15-159-22,783-00-00

API No.

Company **Mike Kelso Oil, Inc.**

Well **Meyer Ankerholz #13**

Field **Geneseo-Edwards**

County **Rice** State **Kansas**

Location **1,650' FSL & 330' FWL**

Sec: **30** Twp: **18S** Rge: **7W**

Permanent Datum **Ground Level** Elevation **1717**

Log Measured From **Kelly Bushing** 7 Ft. Above Perm. Datum

Drilling Measured From **Kelly Bushing**

Other Services
CNL/CDL
MEL

Elevation

K.B. 1724
D.F. 1717
G.L. 1717

Date **5/15/2014**

Run Number **One**

Depth Driller **3345**

Depth Logger **3345**

Bottom Logged Interval **3344**

Top Log Interval **350**

Casing Driller **8.625 @ 370**

Casing Logger **370**

Bit Size **7.875**

Type Fluid in Hole **Chemical**

Salinity, ppm CL **6000**

Density / Viscosity **9.2 56**

pH / Fluid Loss **9.5 8.8**

Source of Sample **Flowline**

Rm @ Meas. Temp **.72 @ 78**

Rmf @ Meas. Temp **.54 @ 78**

Rmc @ Meas. Temp **.97 @ 78**

Source of Rmf / Rmc **Charts**

Rm @ BHT **.51 @ 109**

Operating Rig Time **4 Hours**

Max Rec. Temp. F **109**

Equipment Number **108**

Location **Hays**

Recorded By **J. Long**

Witnessed By **Bruce Basye**

<<< Fold Here >>>

All interpretations are opinions based on inferences from electrical or other measurements and we cannot and do not guarantee the accuracy or correctness of any interpretation, and we shall not, except in the case of gross or willful negligence on our part, be liable or responsible for any loss, costs, damages, or expenses incurred or sustained by anyone resulting from any interpretation made by any of our officers, agents or employees. These interpretations are also subject to our general terms and conditions set out in our current Price Schedule.

Comments

Thank you for using Pioneer Energy Services
www.pioneerenergy.com
785 625 3858

Geneseo, (East side of town) 4 3/4 South on 19th Road, East Into

Database File: c:\warrior\data\mike kelso oil_meyer ankerholz #13\mikekelsooil_meyerankerholz_13hd.db
Dataset Pathname: dil/mikestck
Presentation Format: dil2in
Dataset Creation: Thu May 15 15:15:31 2014
Charted by: Depth in Feet scaled 1:600

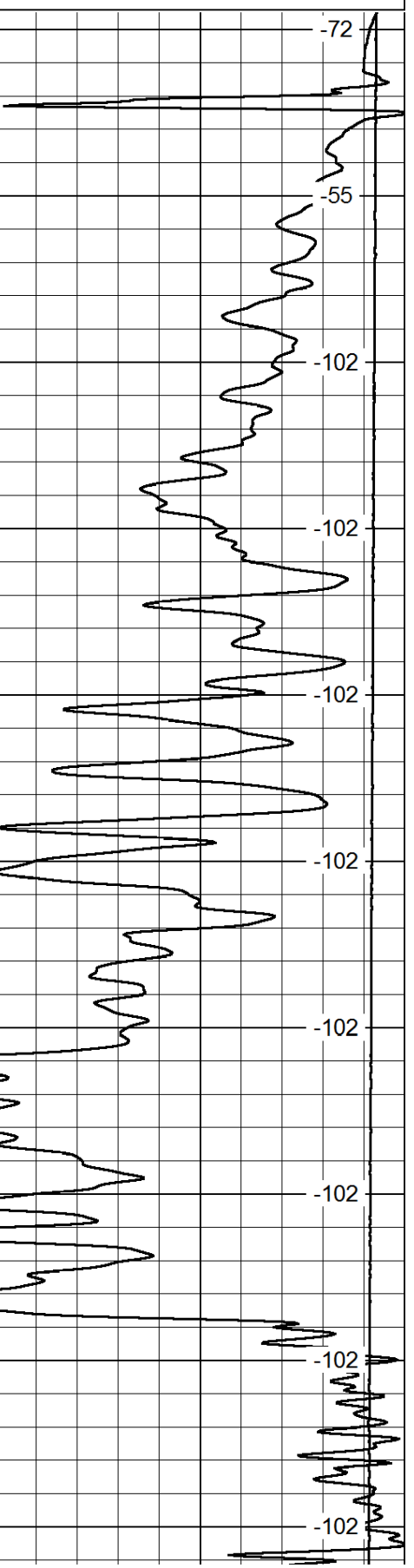
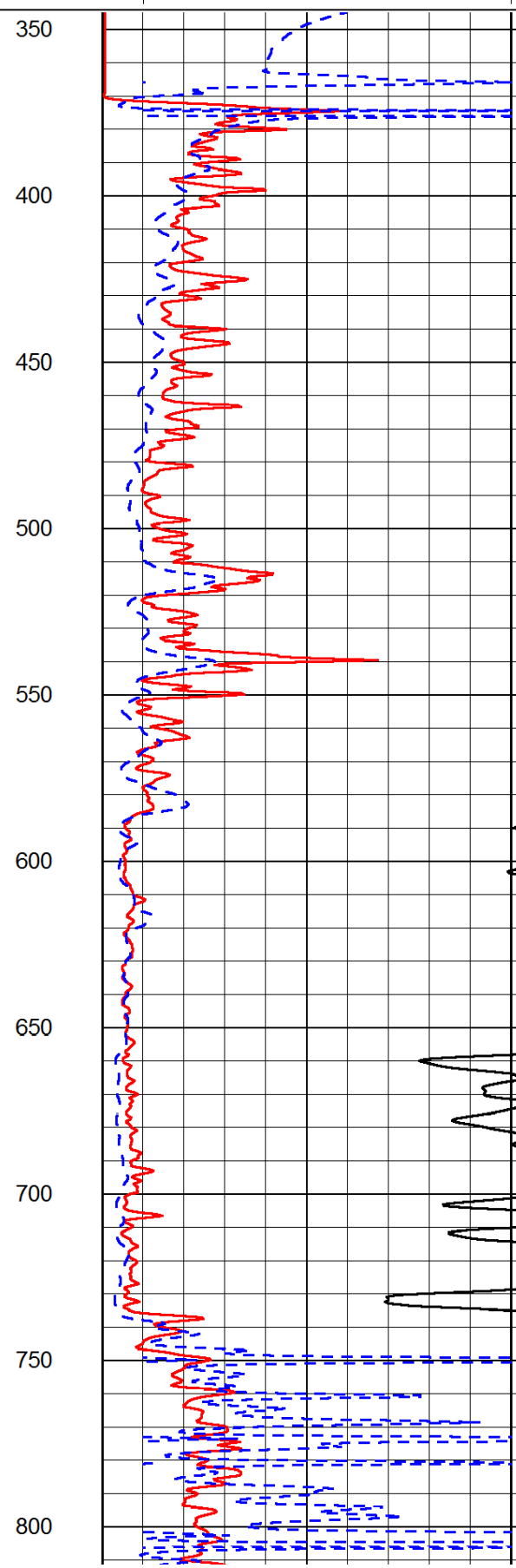
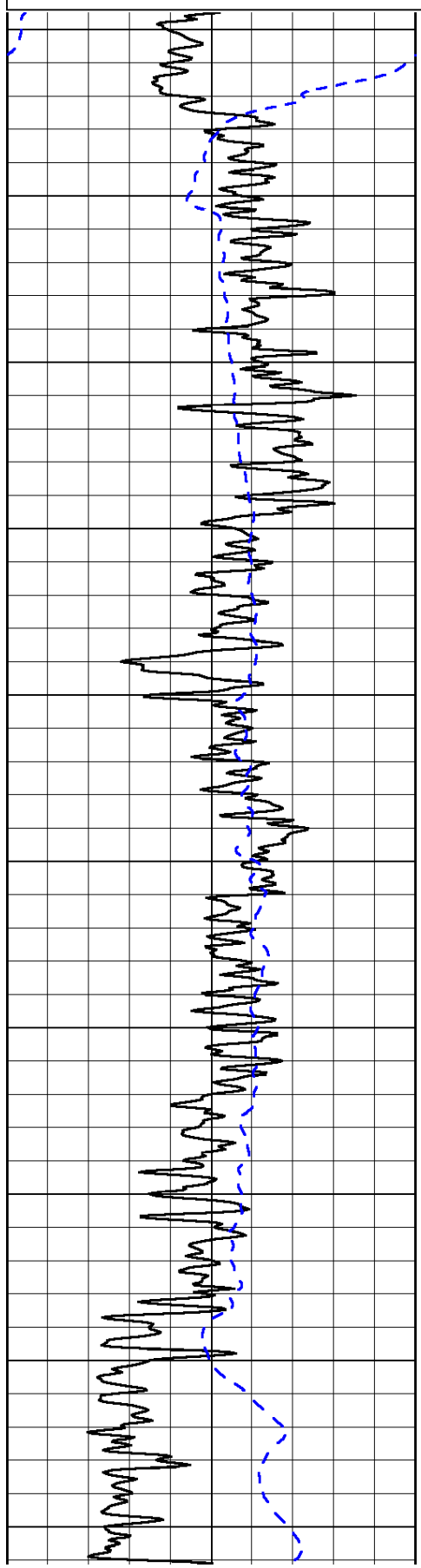
0	Gamma Ray	150
-200	SP (mV)	0

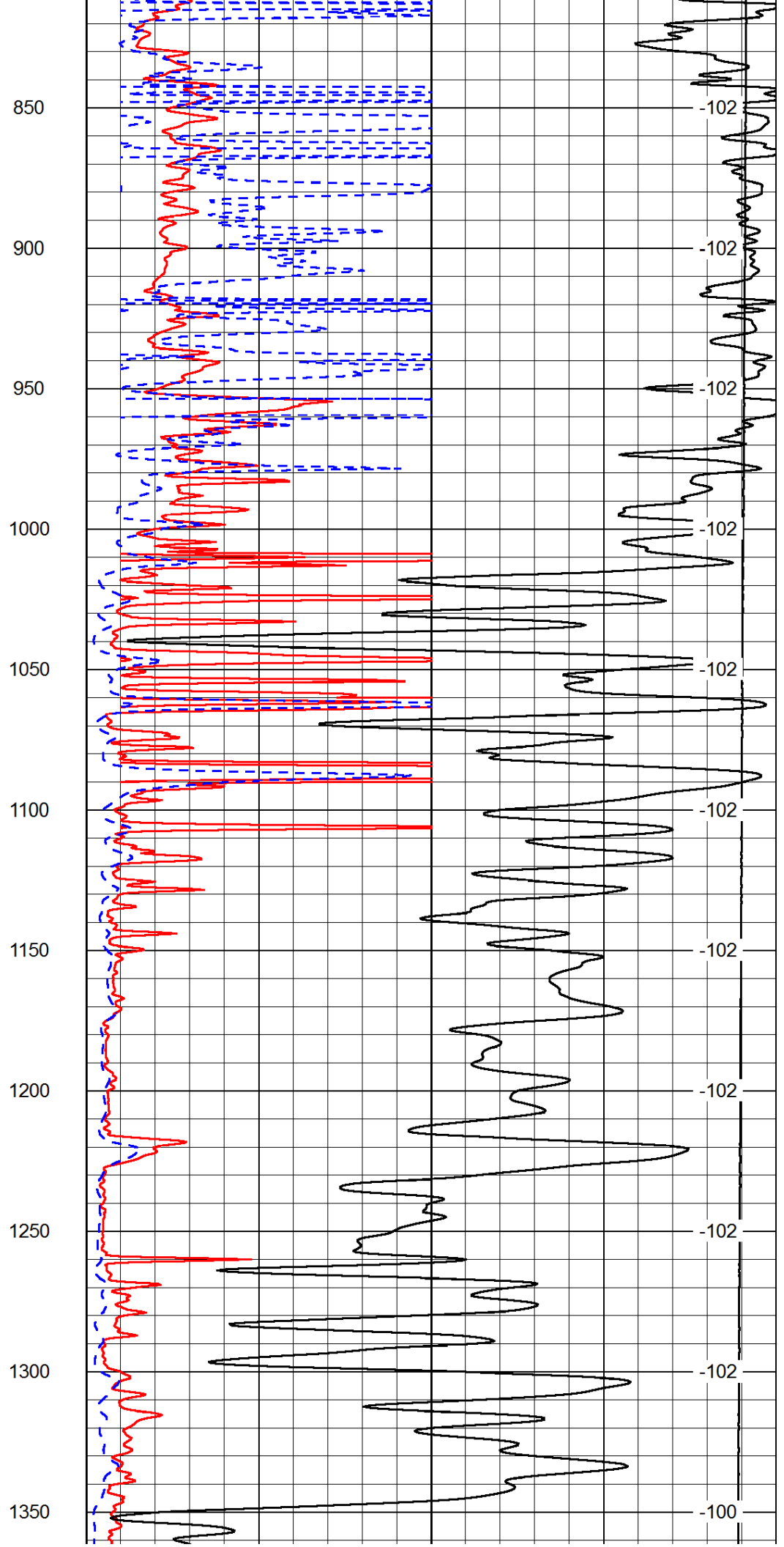
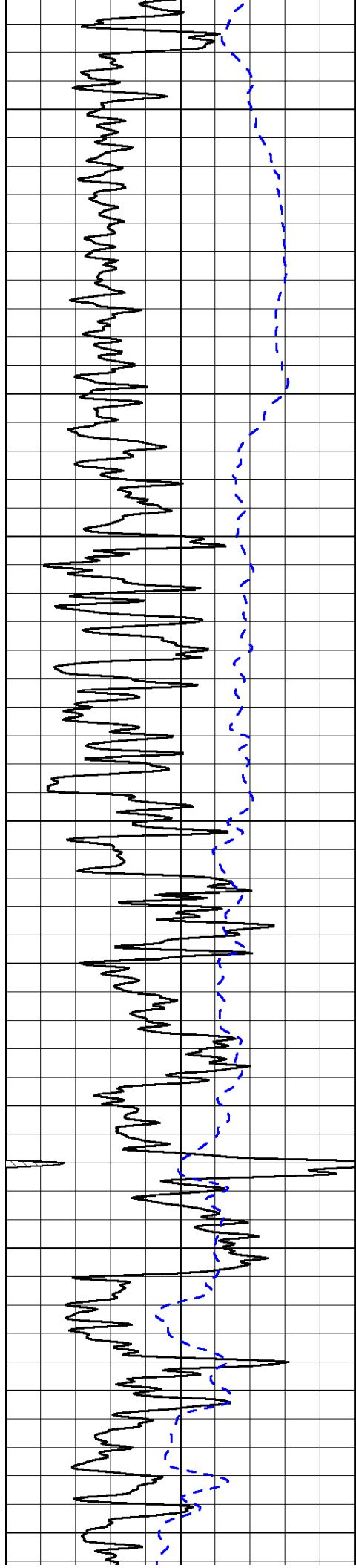
0	Shallow Resistivity	50
0	Deep Resistivity	50

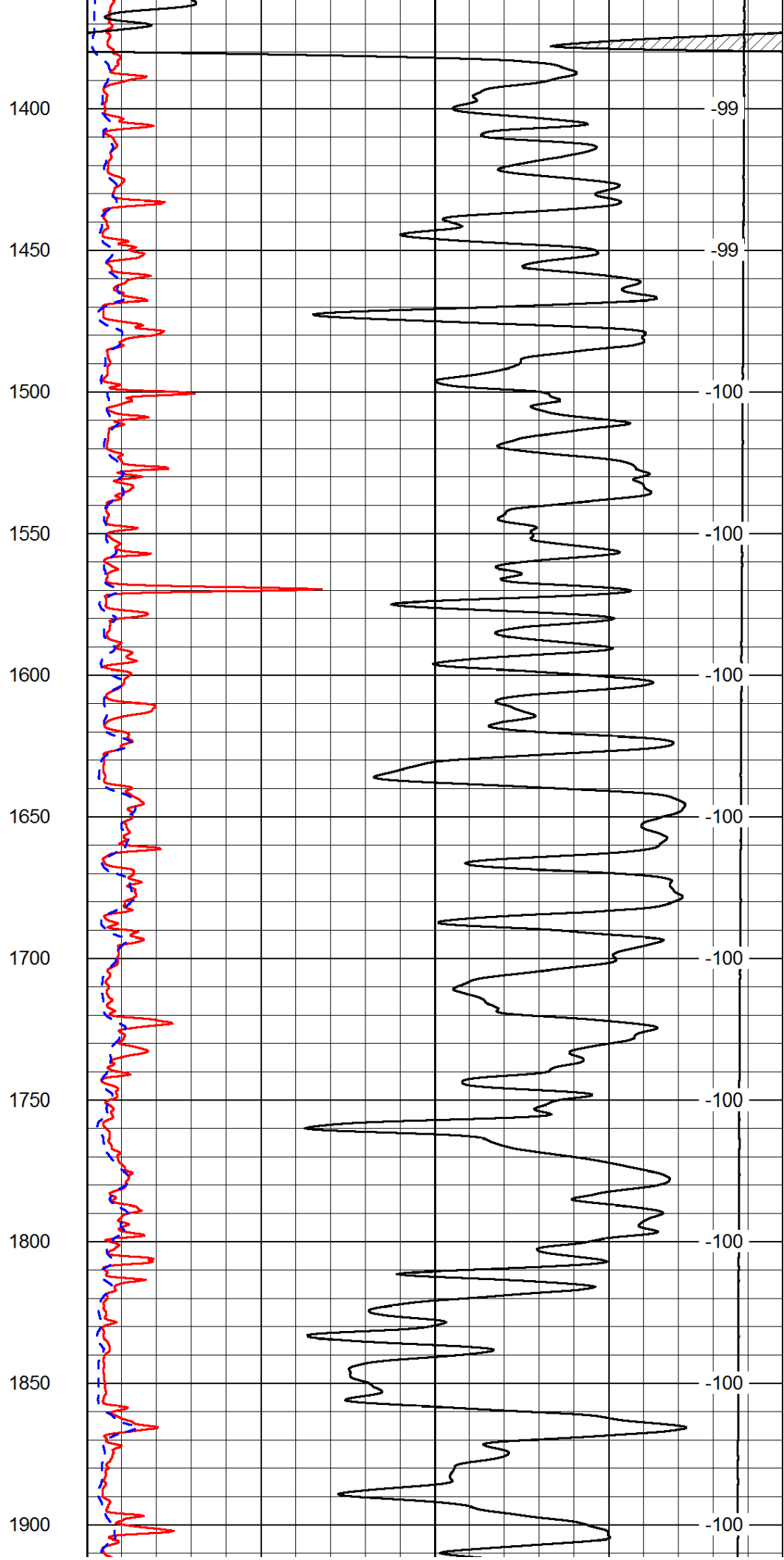
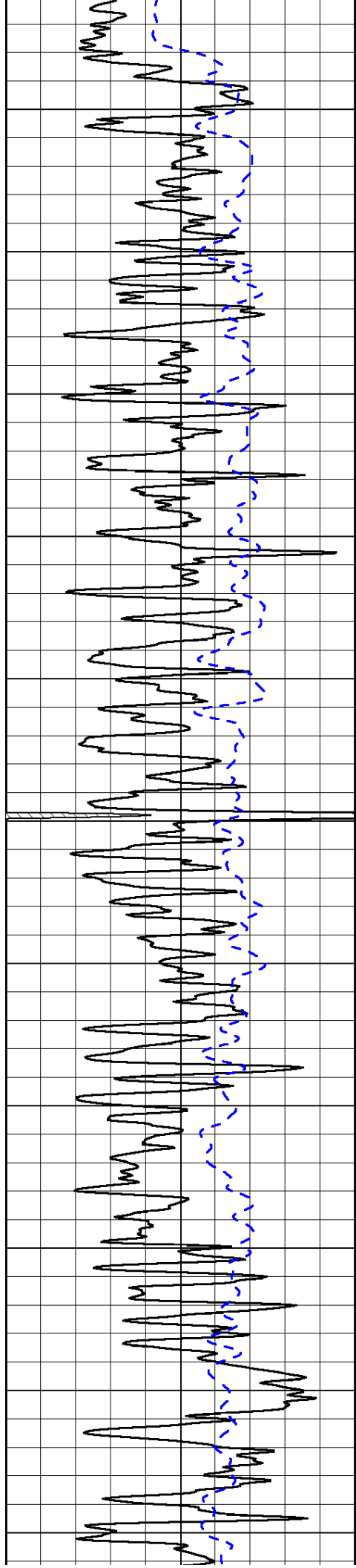
LSPD

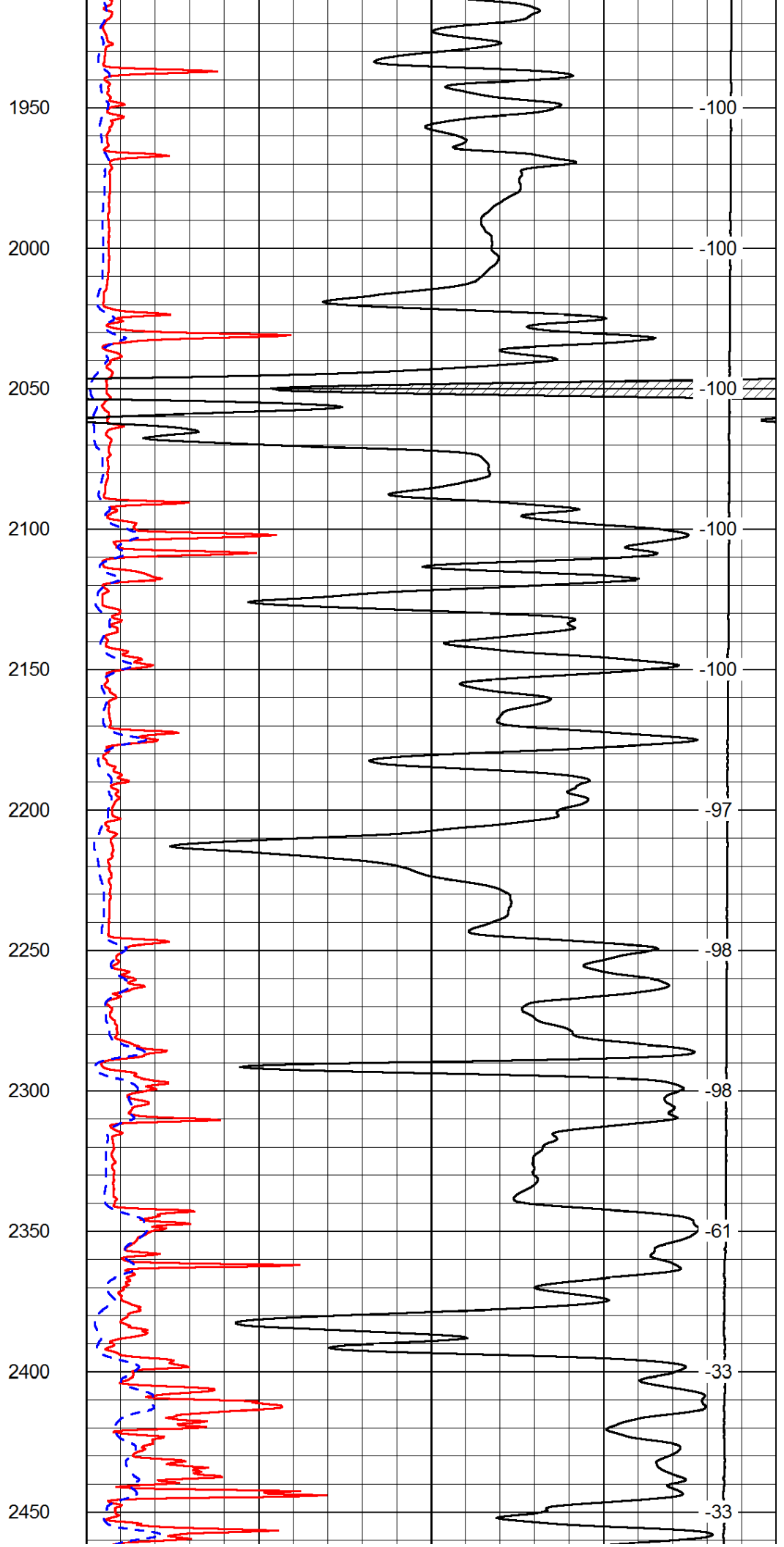
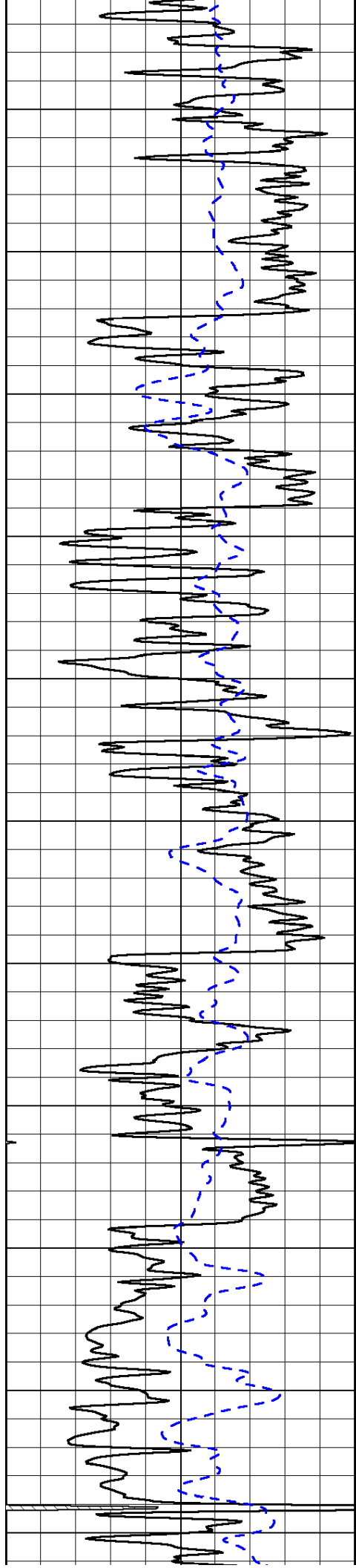
1000	Conductivity	0
15000	Line Tension	0

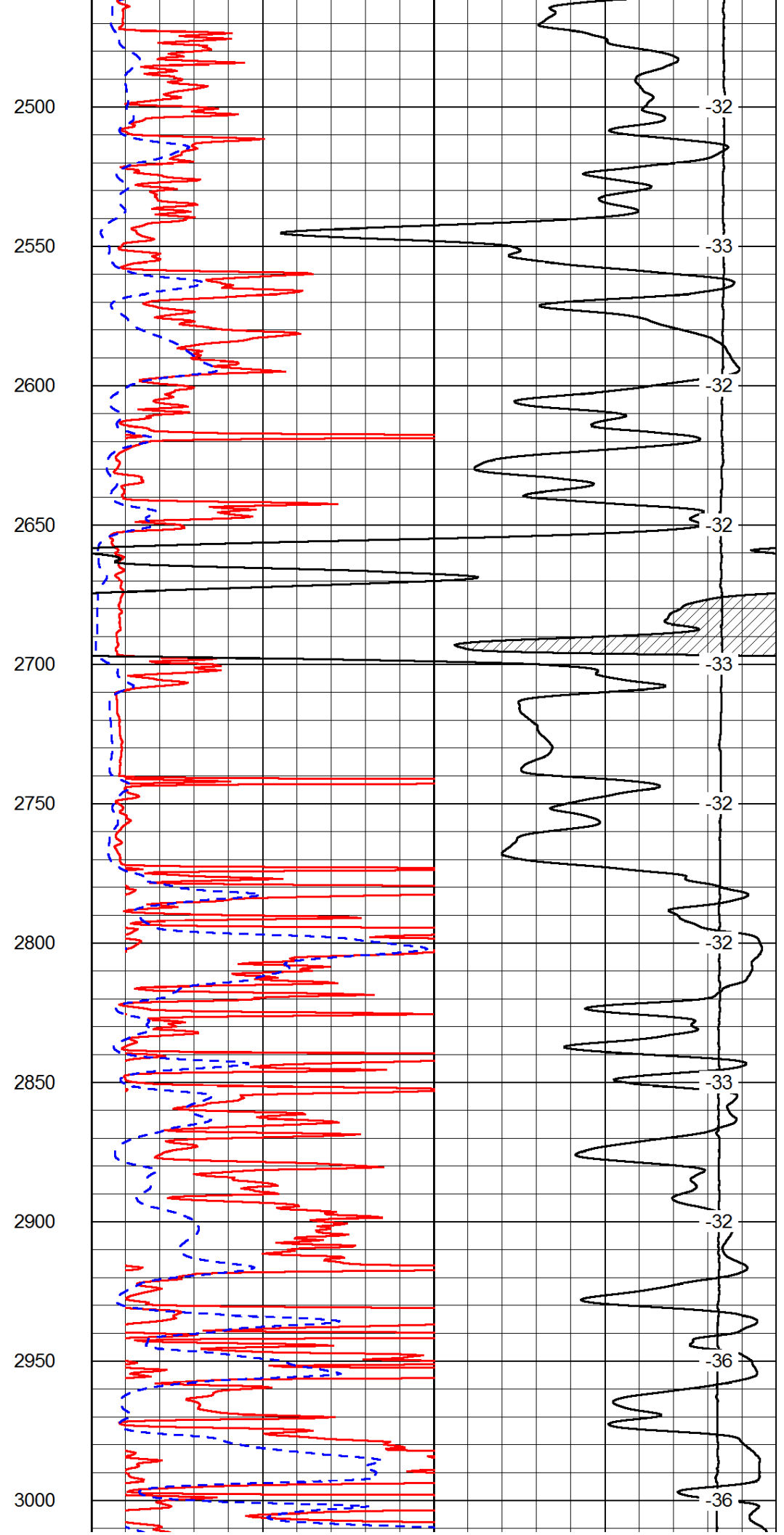
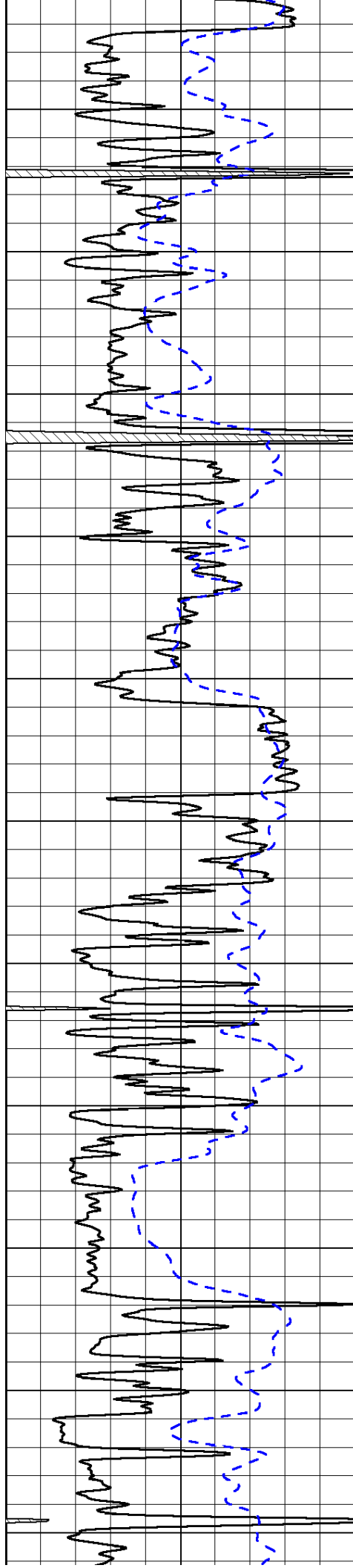
50	Shallow Resistivity	500
50	Deep Resistivity	500

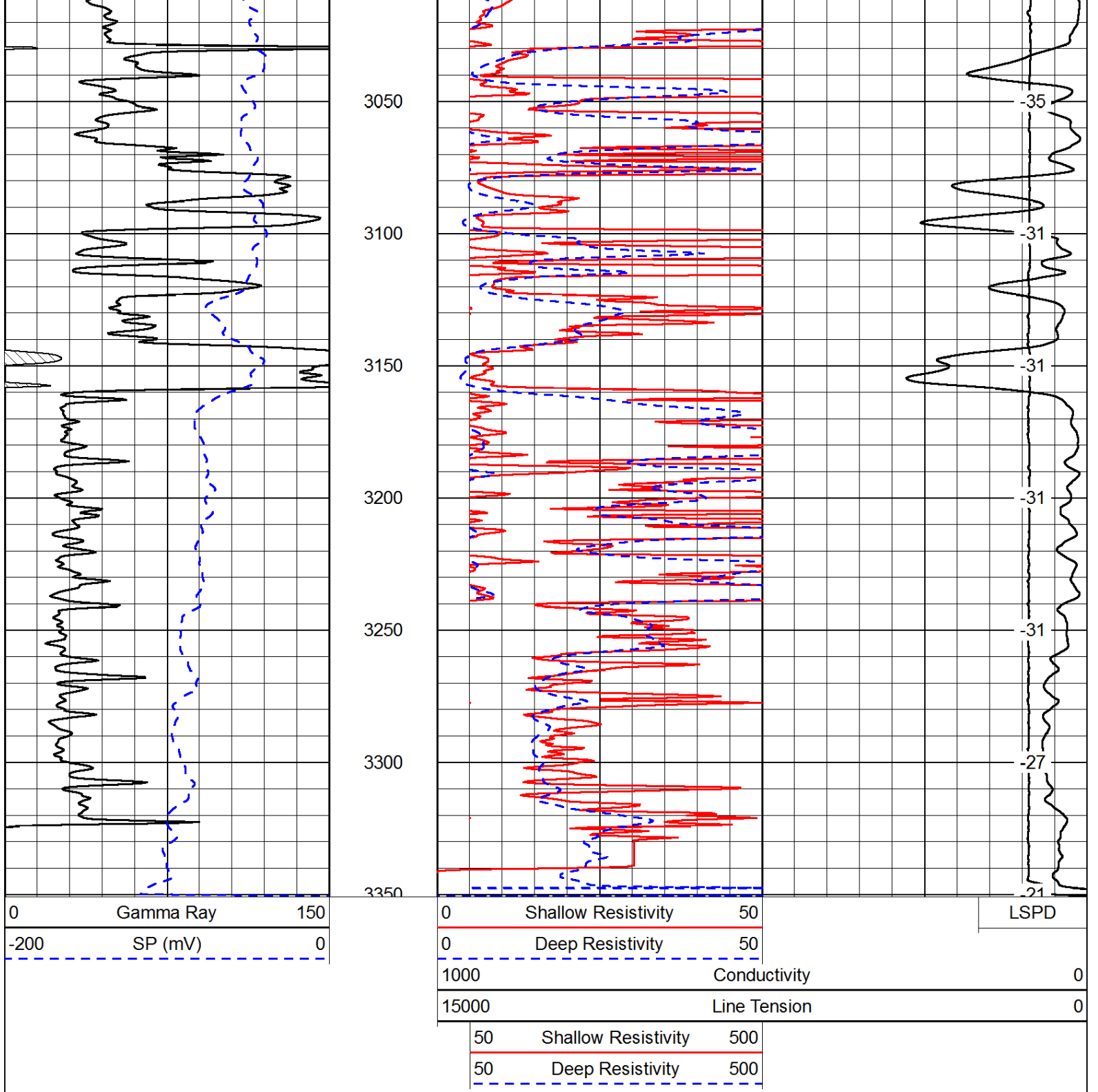




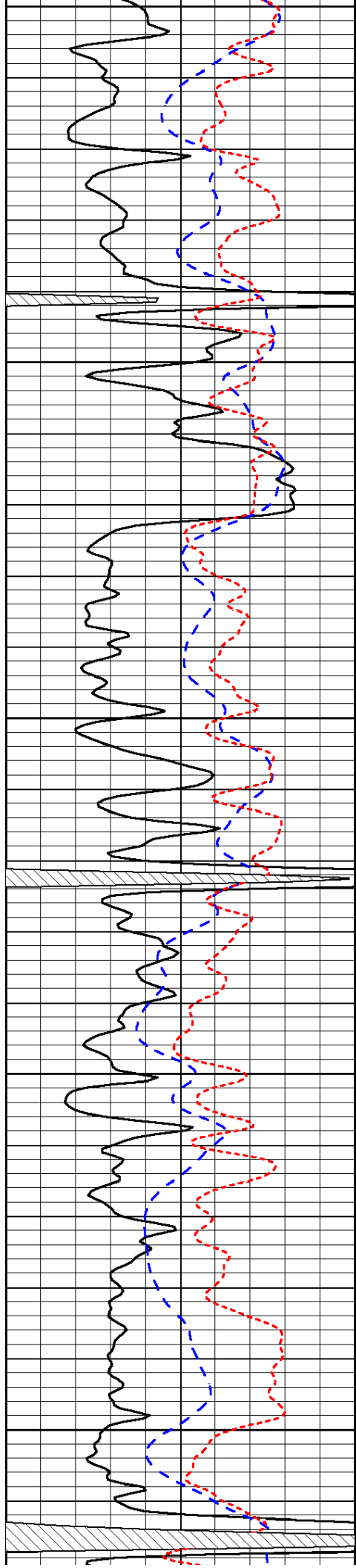








Database File:	c:\warrior\data\mike kelso oil_meyer ankerholz #13\mikekelsooil_meyerankerholz_13hd.db		
Dataset Pathname:	dil/mikestck		
Presentation Format:	dil		
Dataset Creation:	Thu May 15 15:15:31 2014		
Charted by:	Depth in Feet scaled 1:240		
0	Gamma Ray	150	
-200	SP (mV)	0	
-160	RxoRt	40	
0.2	Deep Resistivity	2000	
0.2	Medium Resistivity	2000	
0.2	Shallow Resistivity	2000	
15000	Line Tension	0	
	LSPD		



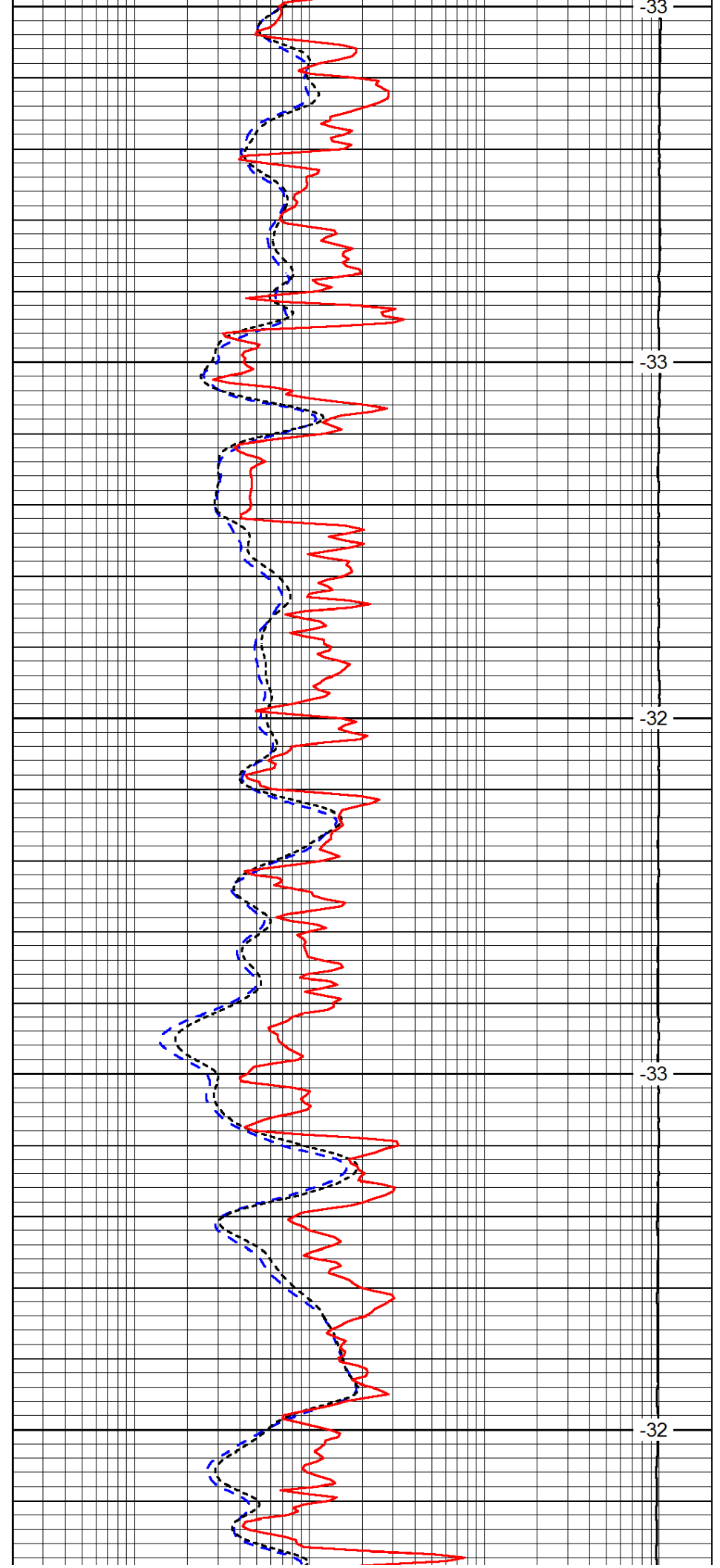
2400

2450

2500

2550

2600



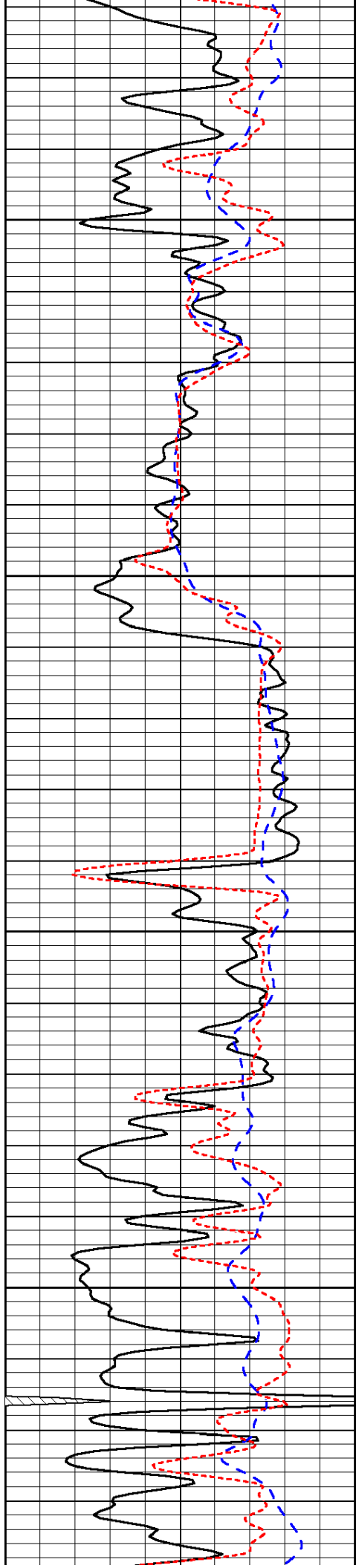
-33

-33

-32

-33

-32

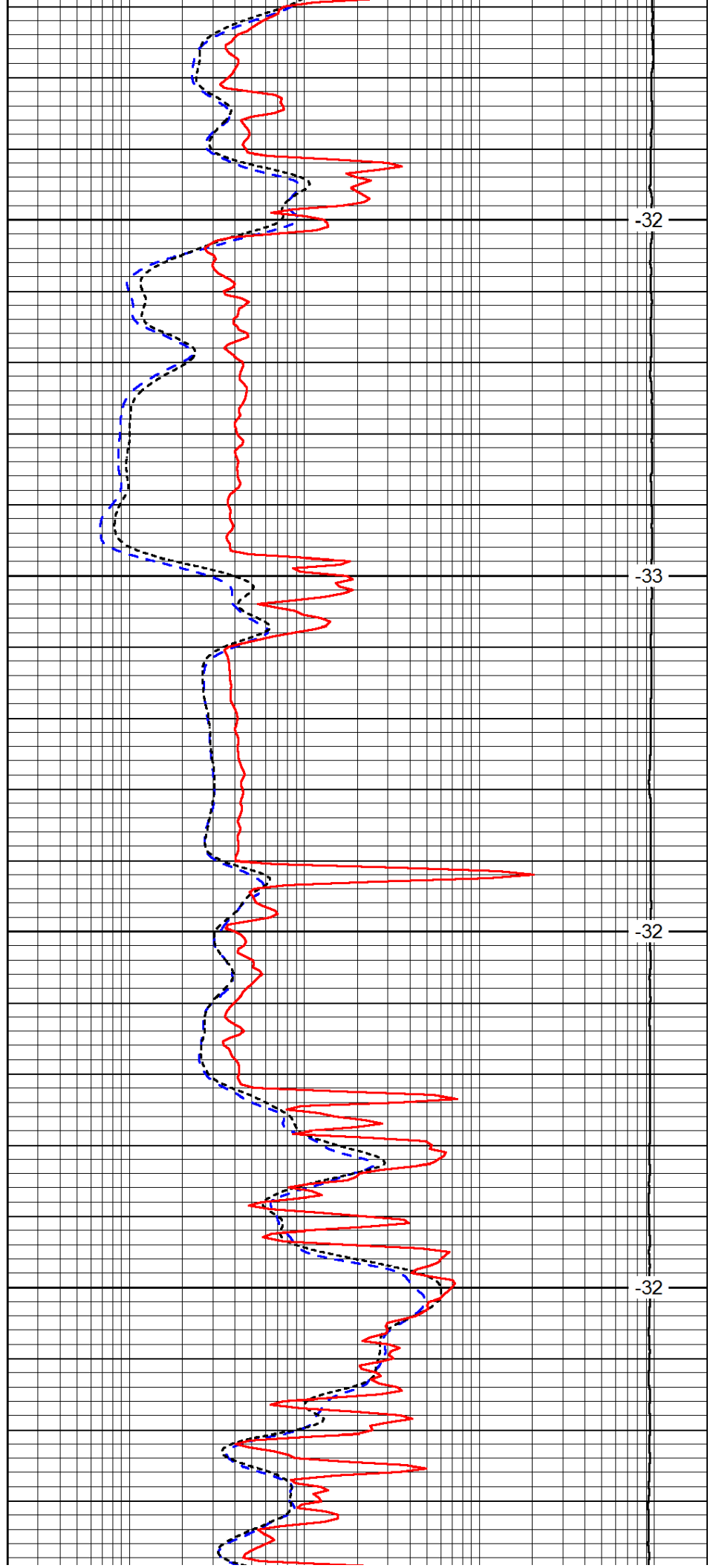


2650

2700

2750

2800

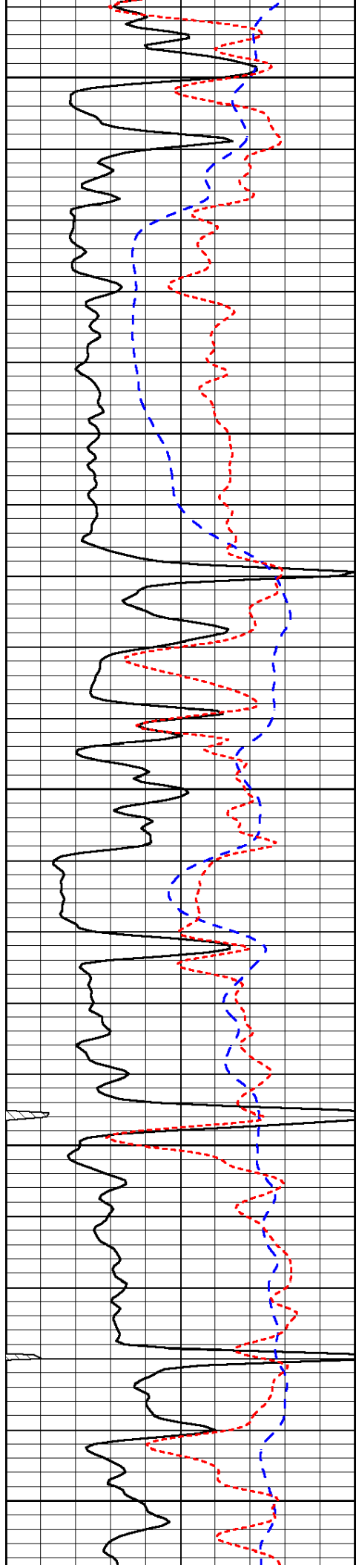


-32

-33

-32

-32



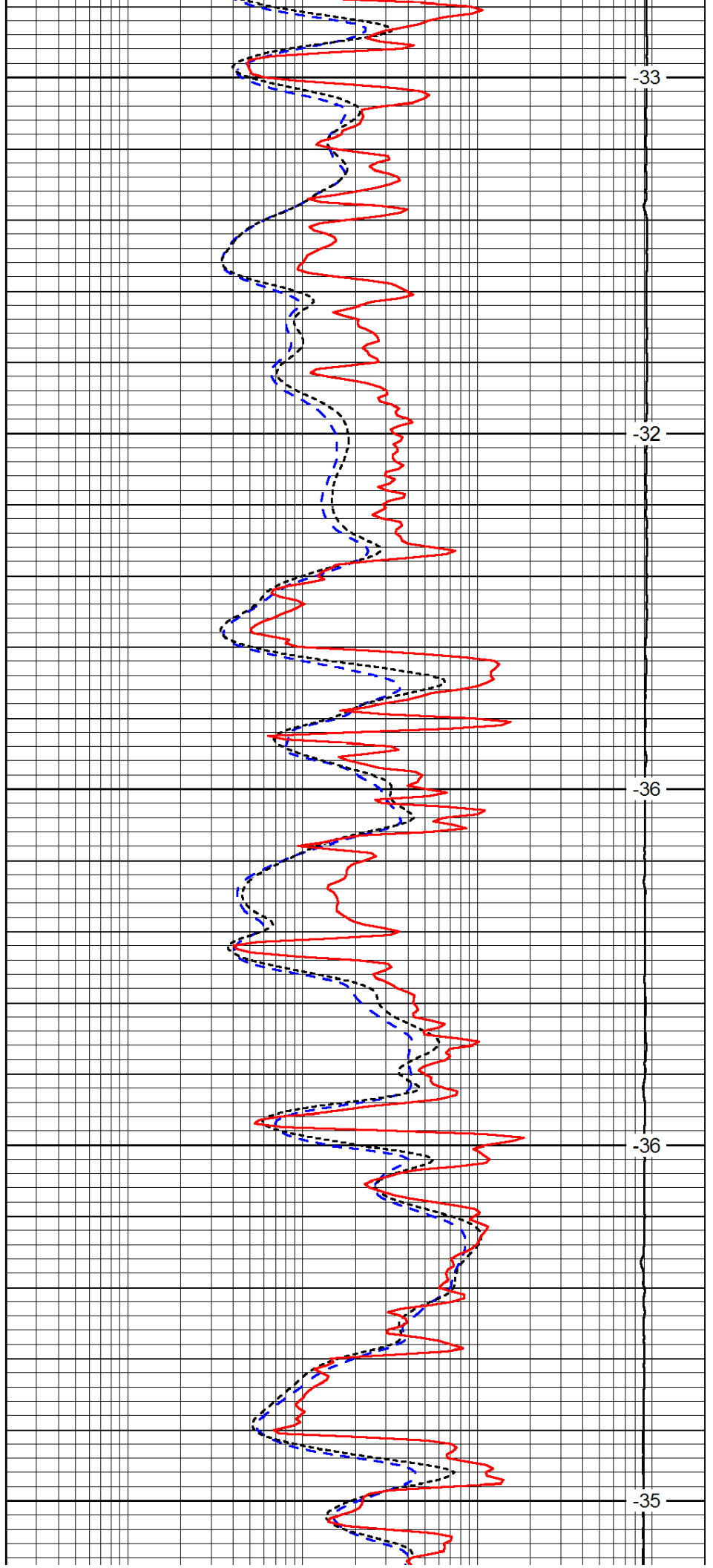
2850

2900

2950

3000

3050



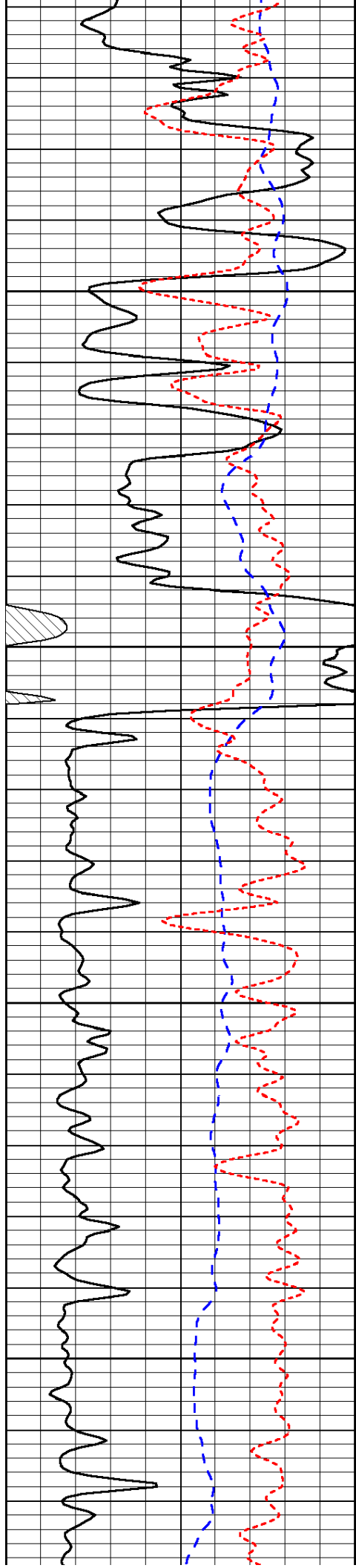
-33

-32

-36

-36

-35

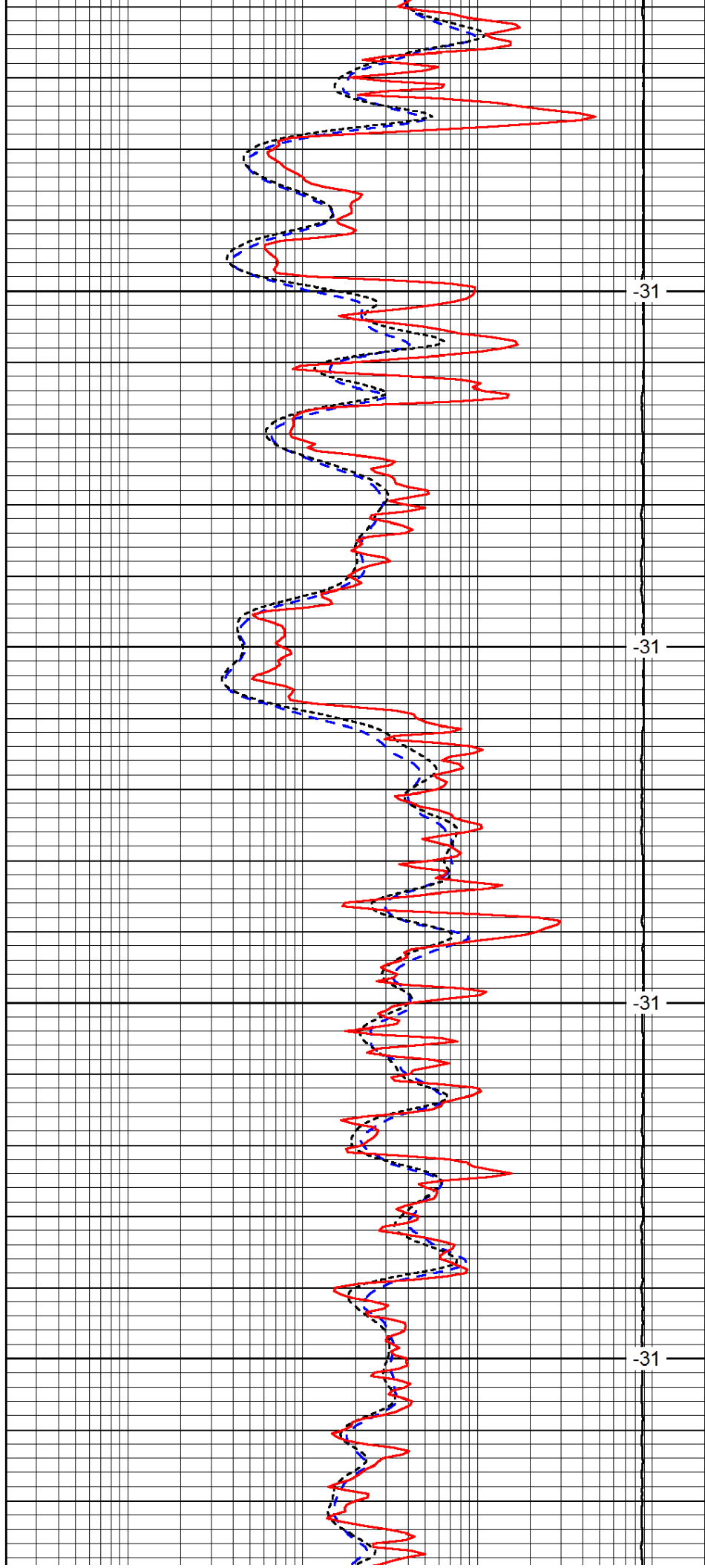


3100

3150

3200

3250

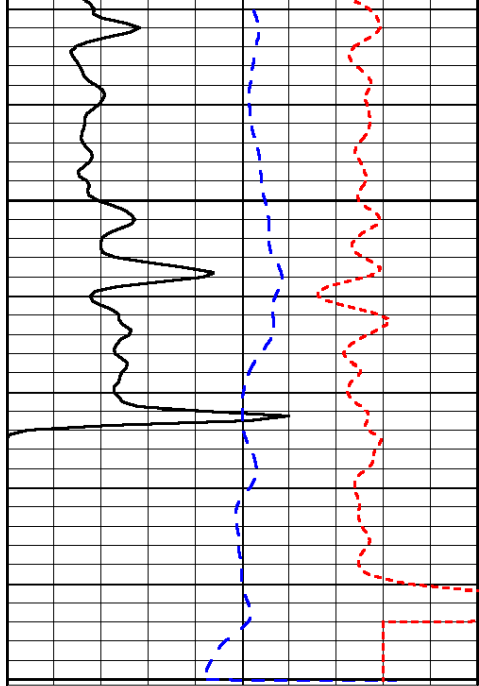


-31

-31

-31

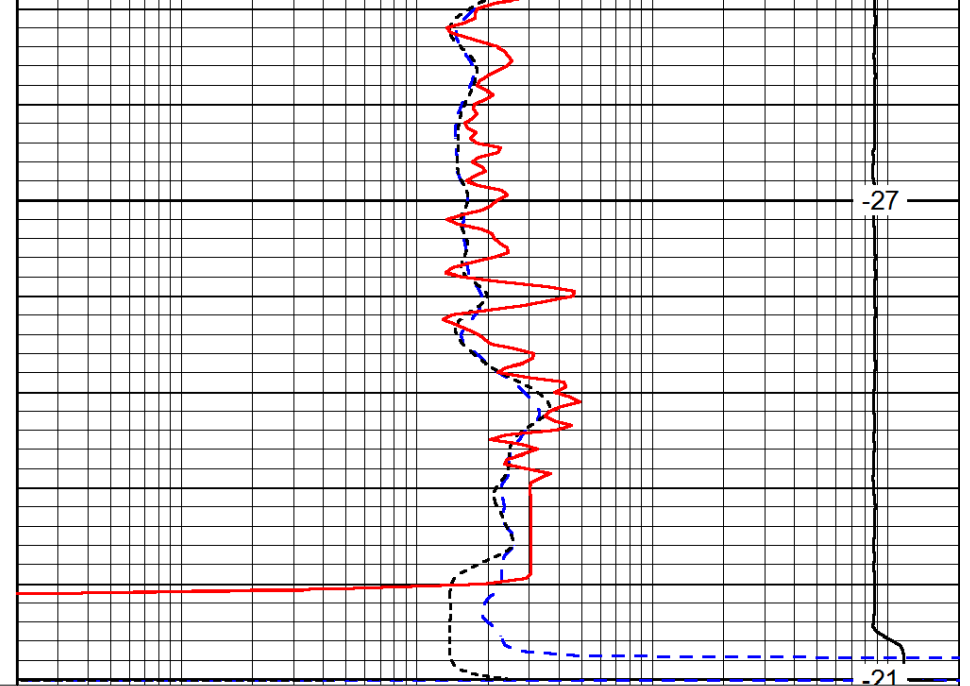
-31



0	Gamma Ray	150
-200	SP (mV)	0
-160	RxoRt	40

3300

3350



-27

-21

0.2	Deep Resistivity	2000
0.2	Medium Resistivity	2000
0.2	Shallow Resistivity	2000
15000	Line Tension	0

LSPD