



Pioneer Energy Services

Microresistivity Log

API No.	15-163-24,200-00-00	
Company	TDI, Inc.	
Well	Stephanie #1	
Field	Unnamed	
County	Rooks	State
		Kansas
Location	SW NW SE SW 916' FSL & 1617' FWL	
Sec:	10	Twp: 10S Rge: 17W
Permanent Datum	Ground Level	Elevation 2012
Log Measured From	Kelly Bushing	10 Ft. Above Perm. Datum
Drilling Measured From	Kelly Bushing	
		Other Services CNL/CDL DIL
		Elevation K.B. 2022 D.F. G.L. 2012

Date	5/6/2014
Run Number	Two
Depth Driller	3646
Depth Logger	3643
Bottom Logged Interval	3642
Top Log Interval	2100
Casing Driller	8.625 @ 224
Casing Logger	220
Bit Size	7.875
Type Fluid in Hole	Chemical
Salinity, ppm CL	5100
Density / Viscosity	9.3 52
pH / Fluid Loss	10.0 7.8
Source of Sample	Flowline
Rm @ Meas. Temp	0.40 @ 90
Rmf @ Meas. Temp	0.30 @ 90
Rmc @ Meas. Temp	0.54 @ 90
Source of Rmf / Rmc	Charts
Rm @ BHT	0.32 @ 112
Operating Rig Time	4 Hours
Max Rec. Temp. F	112
Equipment Number	10
Location	Hays
Recorded By	D.Kerr
Witnessed By	Tom Denning

<<< Fold Here >>>

All interpretations are opinions based on inferences from electrical or other measurements and we cannot and do not guarantee the accuracy or correctness of any interpretation, and we shall not, except in the case of gross or willful negligence on our part, be liable or responsible for any loss, costs, damages, or expenses incurred or sustained by anyone resulting from any interpretation made by any of our officers, agents or employees. These interpretations are also subject to our general terms and conditions set out in our current Price Schedule.

Comments

Thank you for using Log-Tech, Inc.
 (785) 625-3858

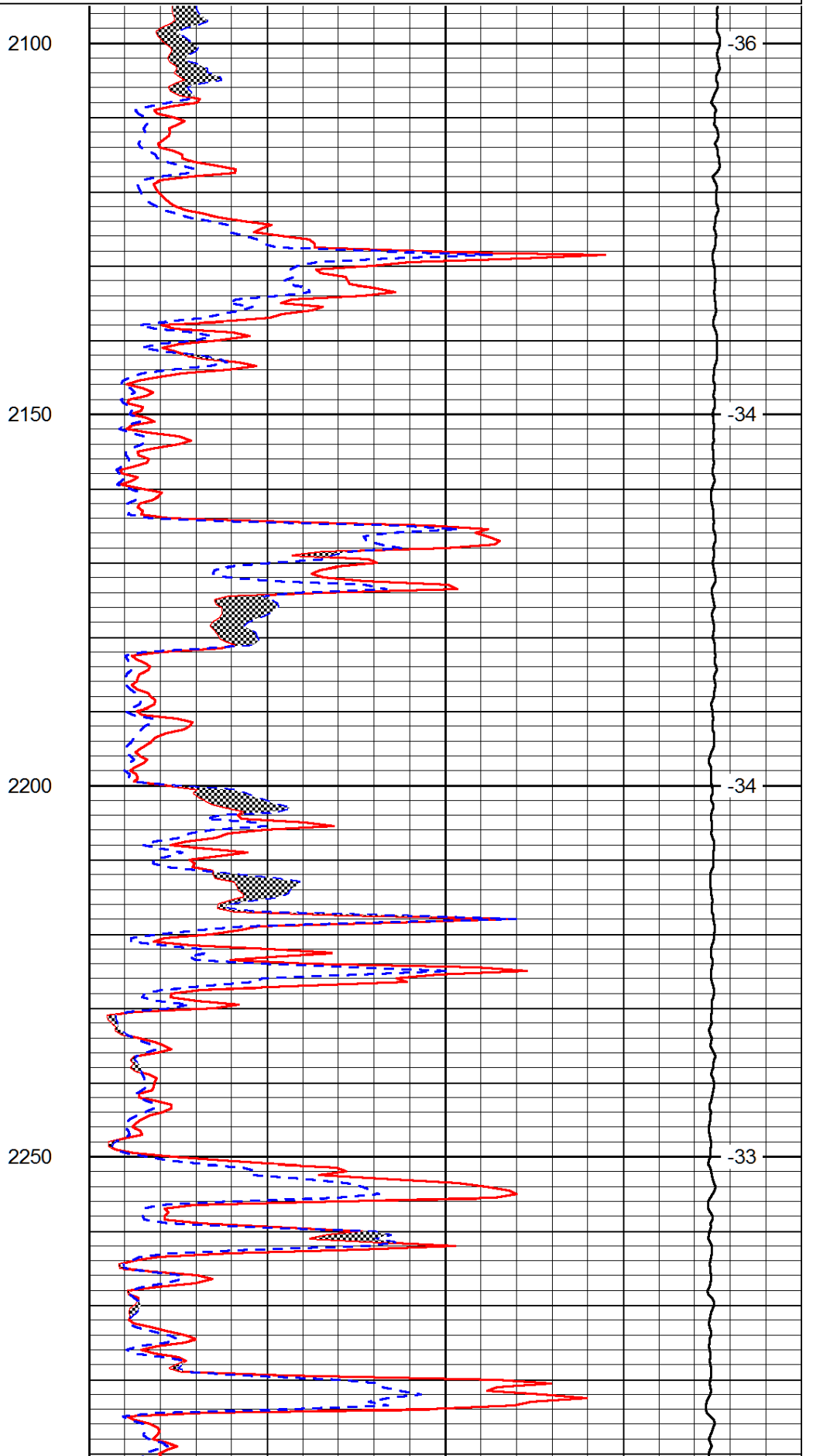
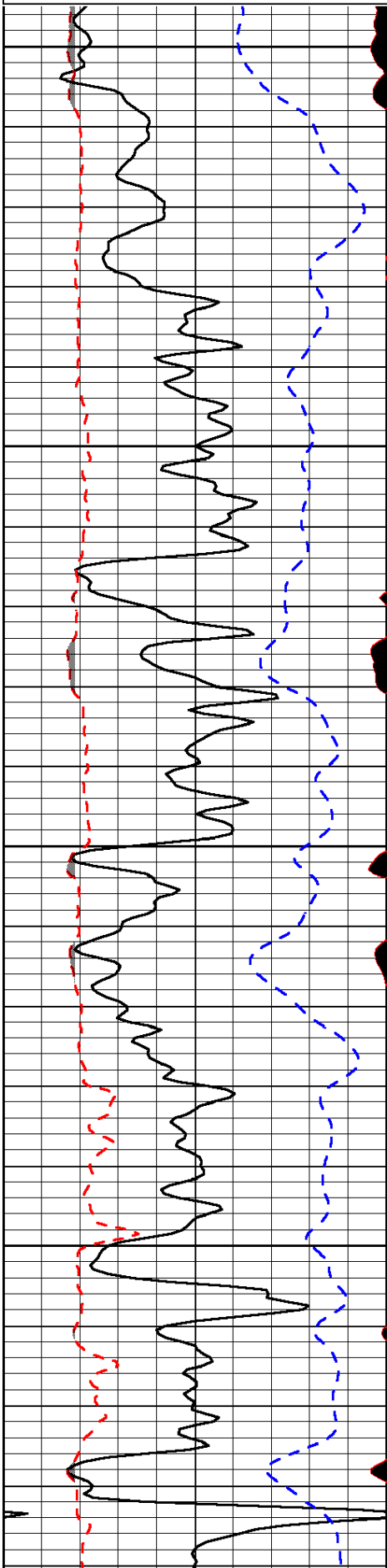
Plainville KS, South to AA RD,
 4 1/2 East, 1/4 North, East and South Into

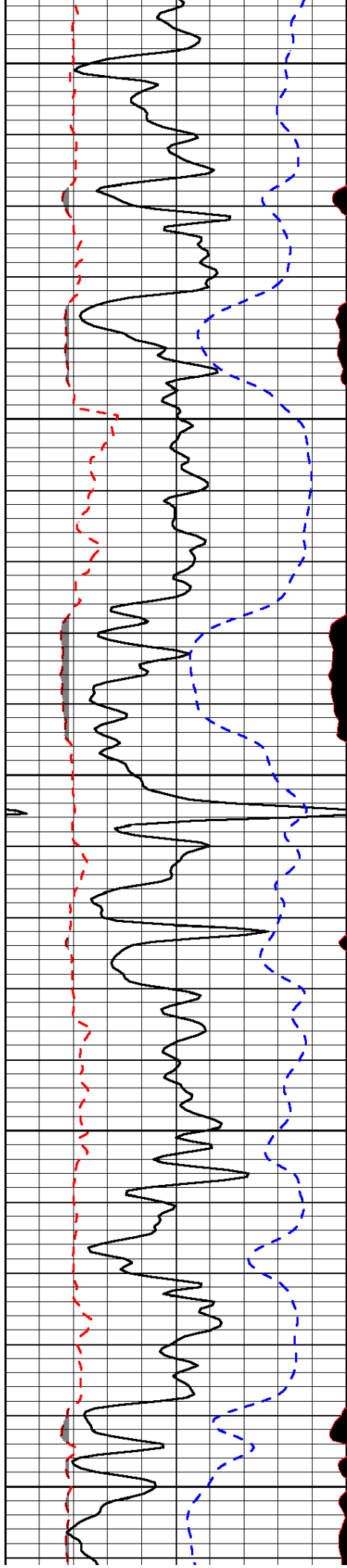
Database File: tdi_stephanie_1hd.db
 Dataset Pathname: DIL/tdistk
 Presentation Format: micro
 Dataset Creation: Tue May 06 19:01:06 2014
 Charted by: Depth in Feet scaled 1:240

0	Gamma Ray	150
6	MCAL (GAPI)	16
2.875	Mud Cake (GAPI)	7.875
-200	SP (mV)	0

0	Micro Inverse 1 X 1	40
0	Micro Normal 2"	40
10000	Line Weight	0

LSPD





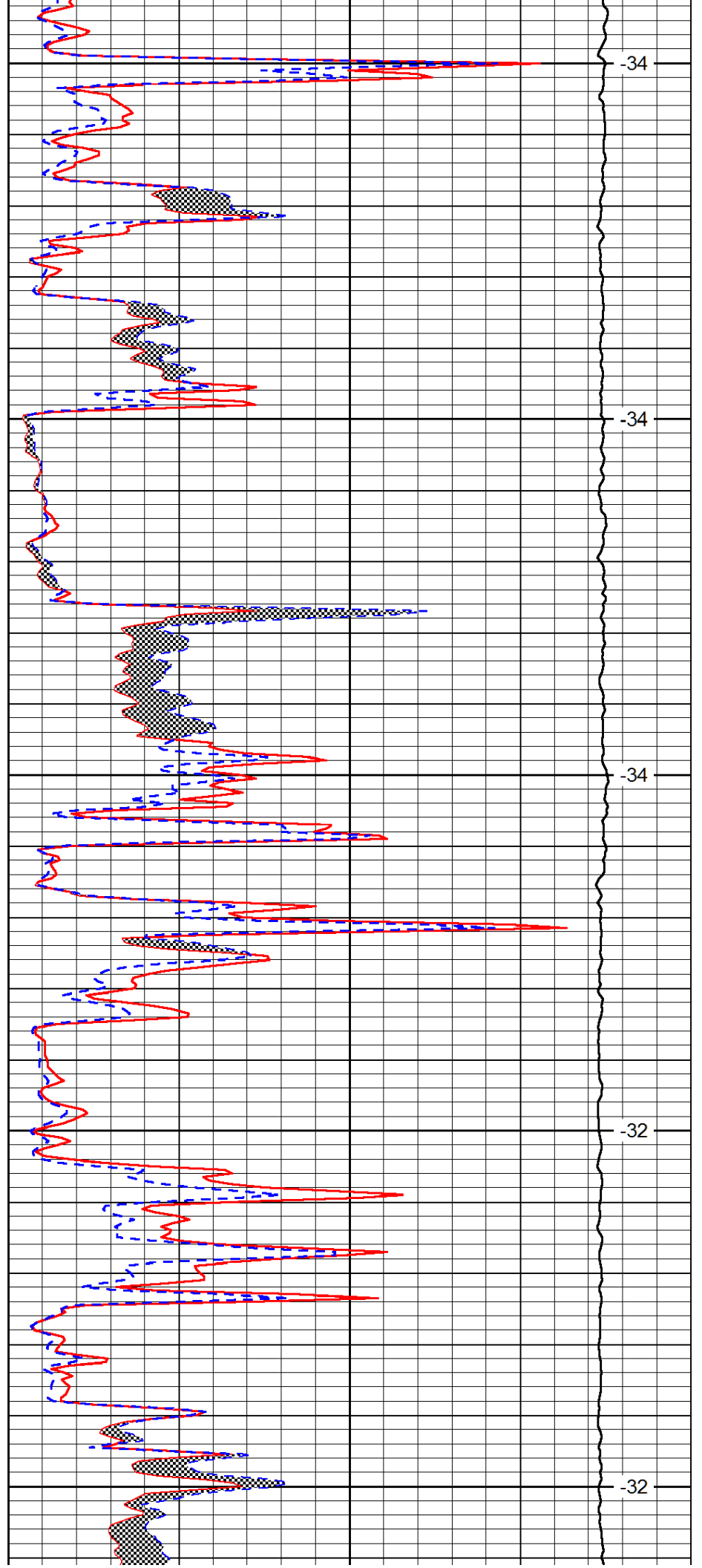
2300

2350

2400

2450

2500



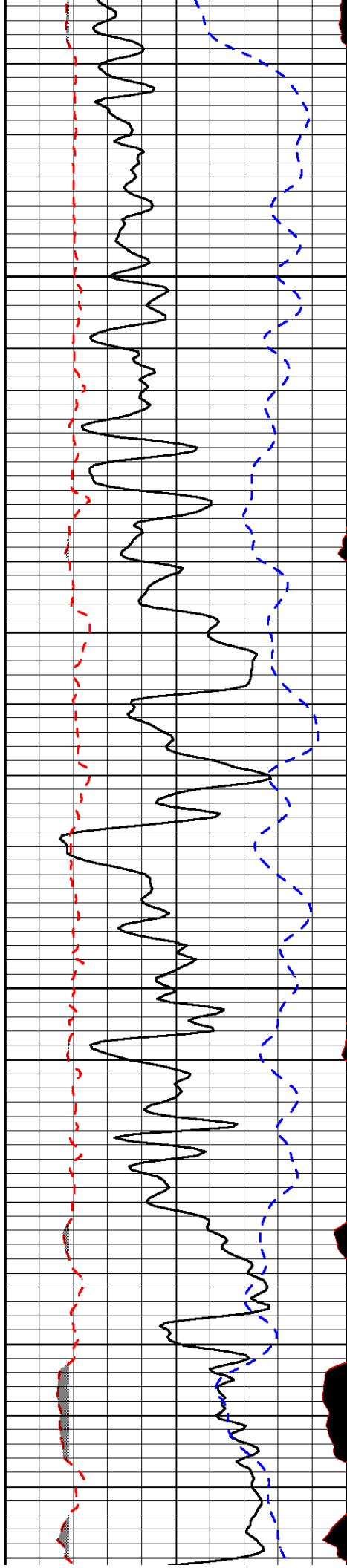
-34

-34

-34

-32

-32

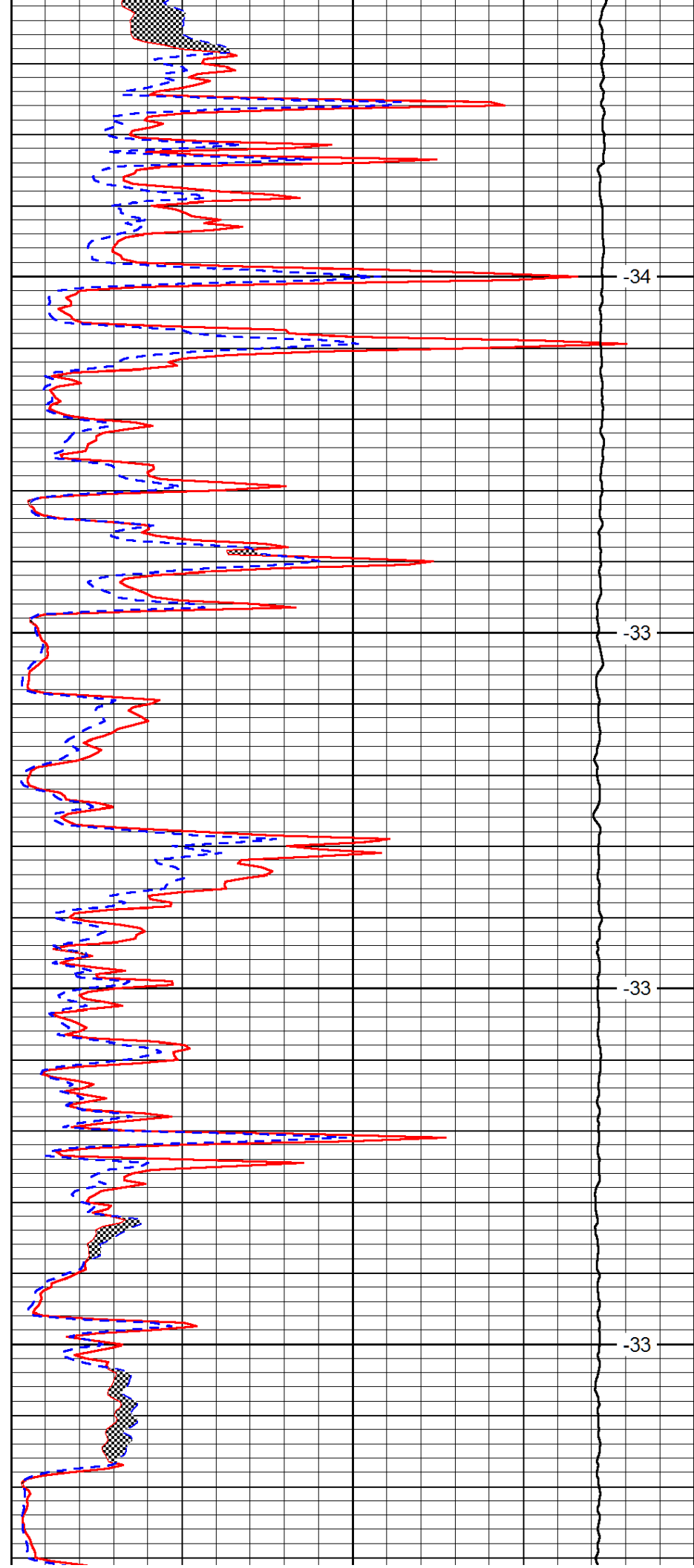


2550

2600

2650

2700

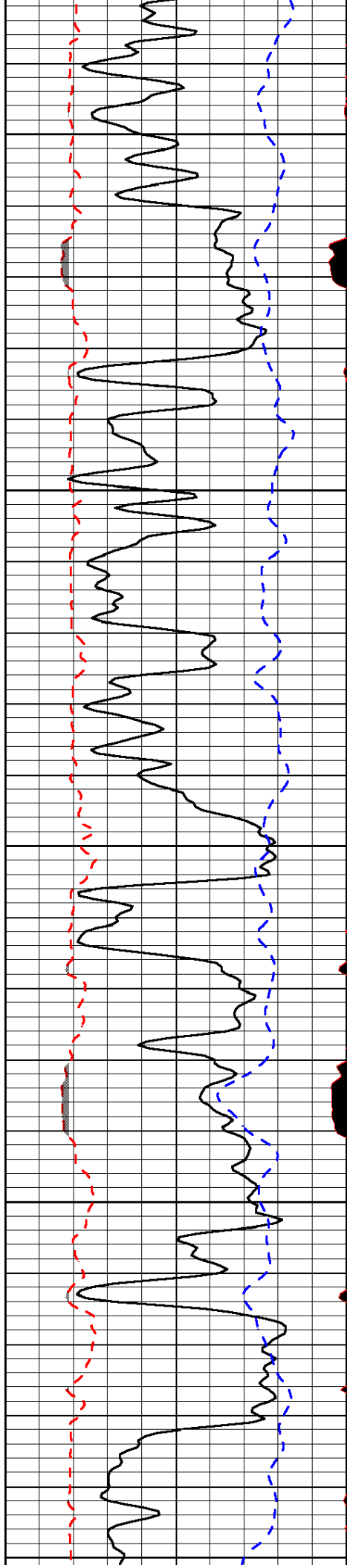


-34

-33

-33

-33



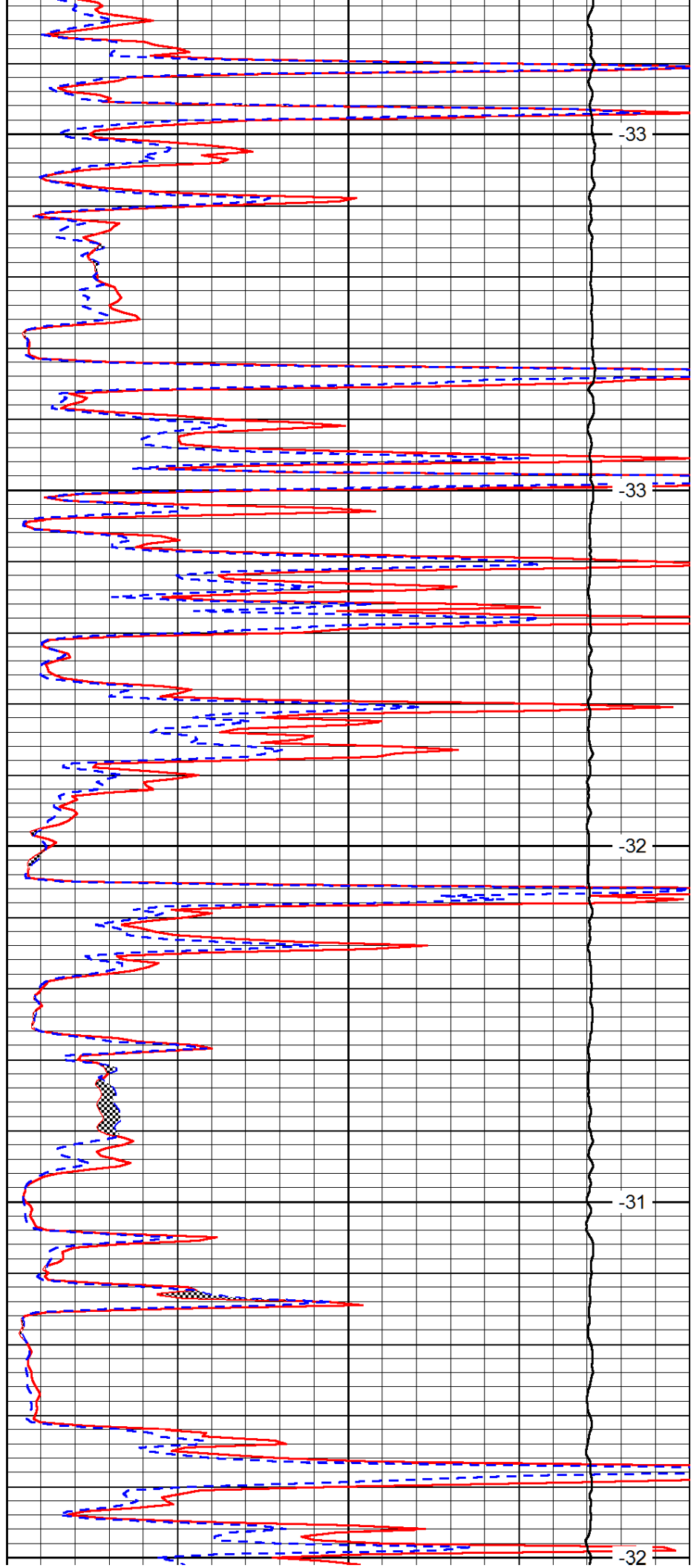
2750

2800

2850

2900

2950



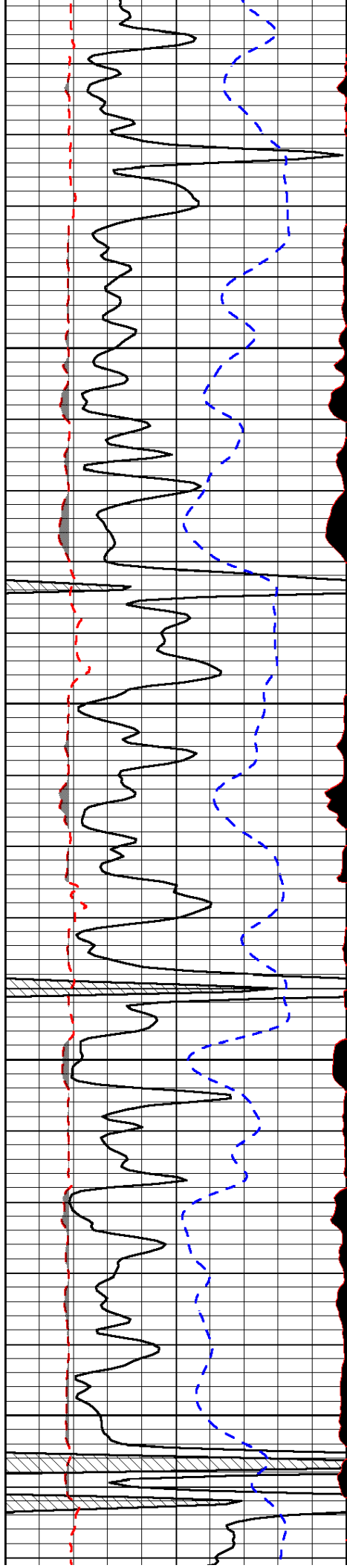
-33

-33

-32

-31

-32

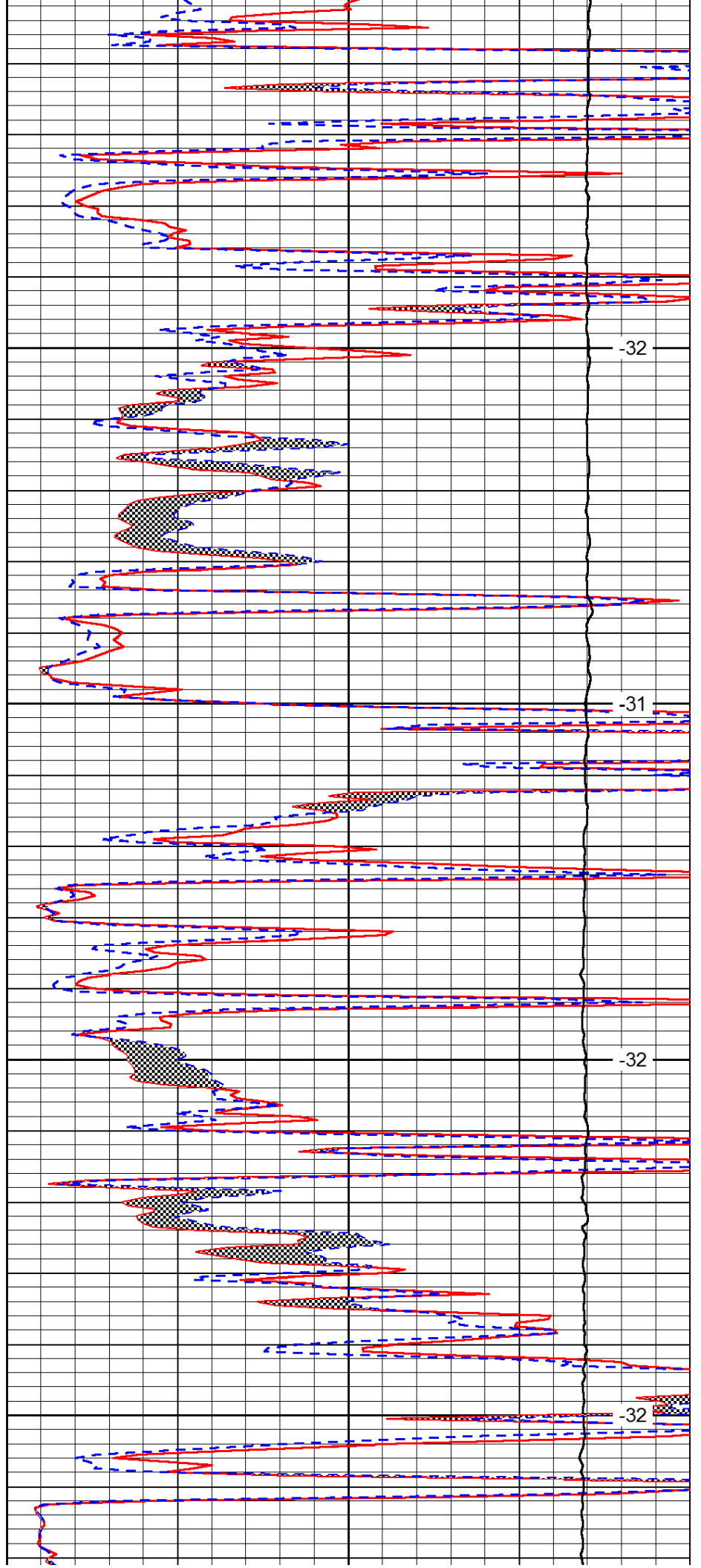


3000

3050

3100

3150

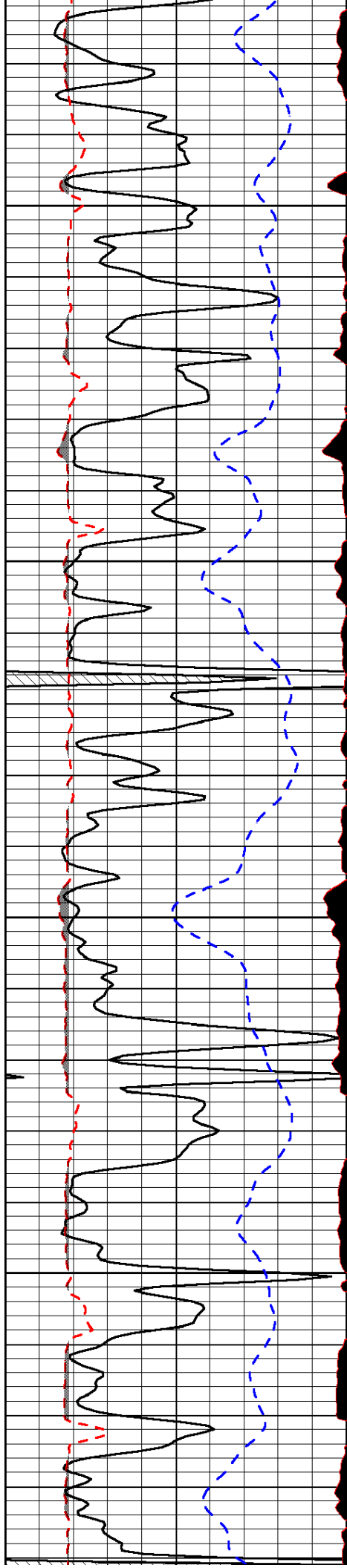


-32

-31

-32

-32

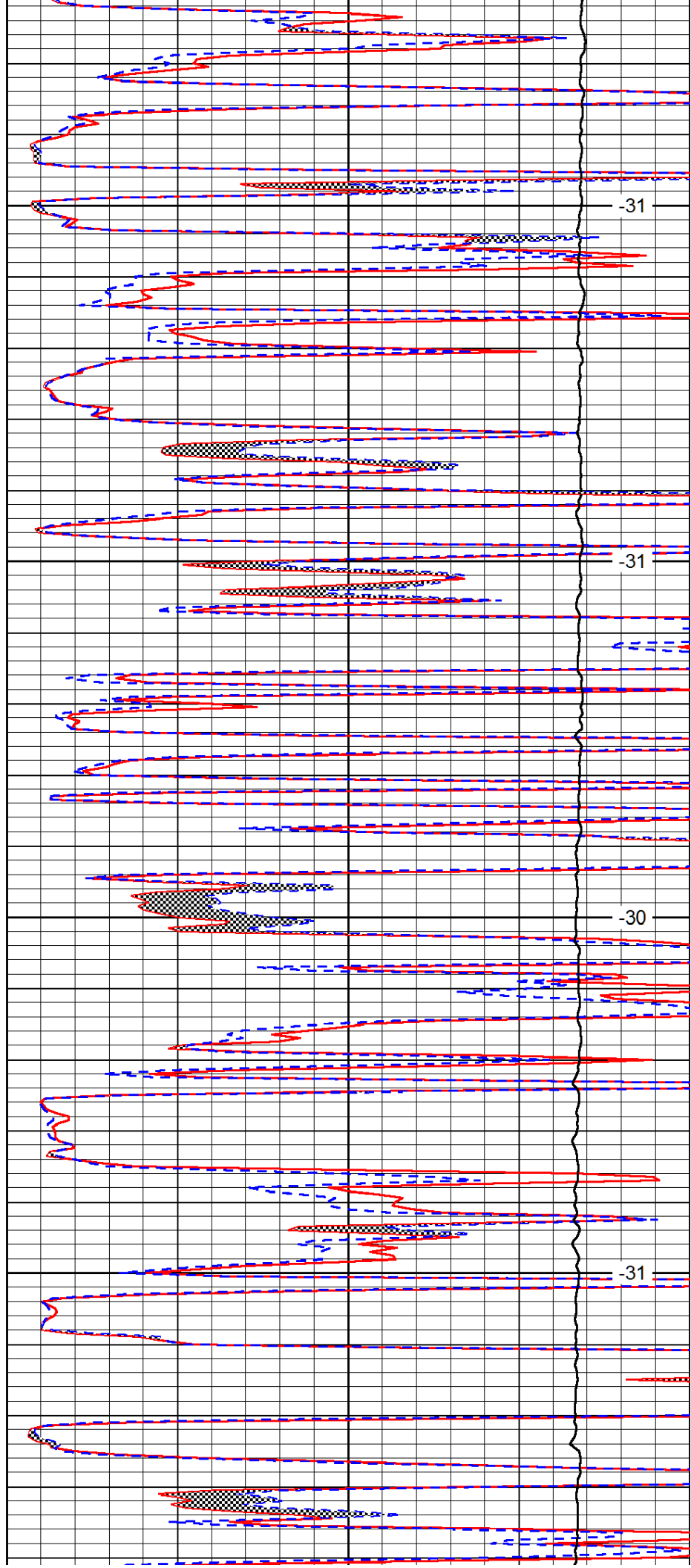


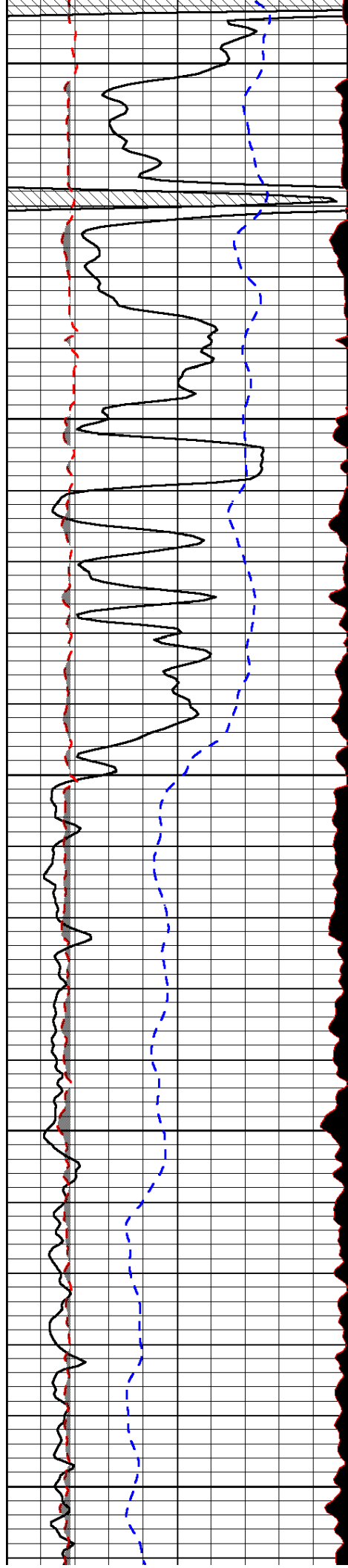
3200

3250

3300

3350





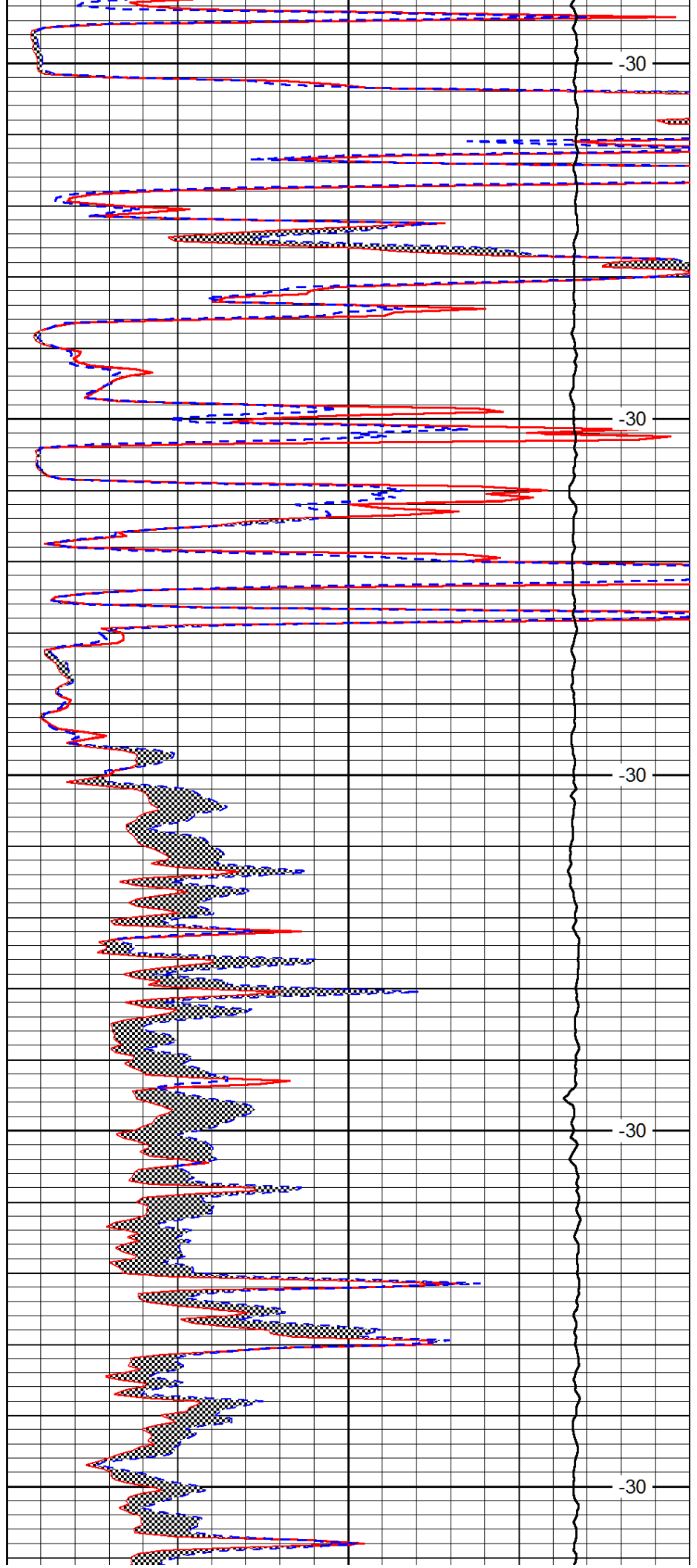
3400

3450

3500

3550

3600



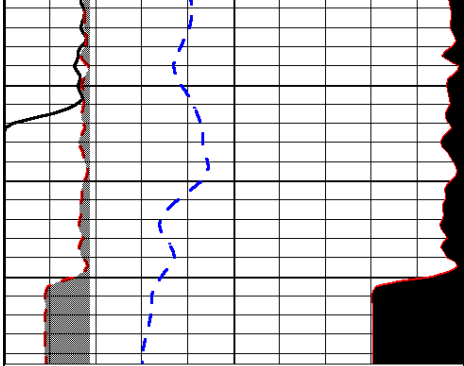
-30

-30

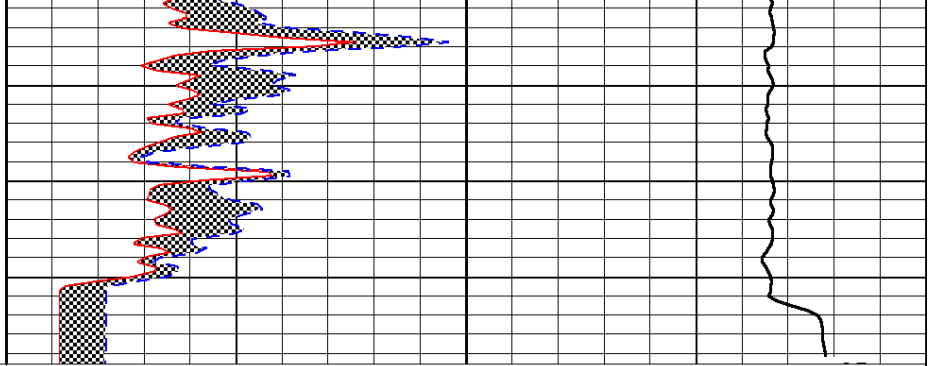
-30

-30

-30



0	Gamma Ray	150
6	MCAL (GAPI)	16
2.875	Mud Cake (GAPI)	7.875
-200	SP (mV)	0



0	Micro Inverse 1 X 1	40
0	Micro Normal 2"	40
10000	Line Weight	0

LSPD