



Pioneer Energy Services

Dual Induction Log

API No.	15-163-24,200-00-00	
Company	TDI, Inc.	
Well	Stephanie #1	
Field	Unnamed	
County	Rooks	State
		Kansas
Location	SW NW SE SW 916' FSL & 1617' FWL	
Sec:	10	Twp: 10S Rge: 17W
Permanent Datum	Ground Level	Elevation 2012
Log Measured From	Kelly Bushing	10 Ft. Above Perm. Datum
Drilling Measured From	Kelly Bushing	K.B. 2022 D.F. G.I.L. 2012

Date	5/6/2014
Run Number	One
Depth Driller	3646
Depth Logger	3643
Bottom Logged Interval	3642
Top Log Interval	200
Casing Driller	8.625 @ 224
Casing Logger	220
Bit Size	7.875
Type Fluid in Hole	Chemical
Salinity, ppm CL	5100
Density / Viscosity	9.3 52
pH / Fluid Loss	10.0 7.8
Source of Sample	Flowline
Rm @ Meas. Temp	0.40 @ 90
Rmf @ Meas. Temp	0.30 @ 90
Rmc @ Meas. Temp	0.54 @ 90
Source of Rmf / Rmc	Charts
Rm @ BHT	0.32 @ 112
Operating Rig Time	4 Hours
Max Rec. Temp. F	112
Equipment Number	10
Location	Hays
Recorded By	D.Kerr
Witnessed By	Tom Denning

<<< Fold Here >>>

All interpretations are opinions based on inferences from electrical or other measurements and we cannot and do not guarantee the accuracy or correctness of any interpretation, and we shall not, except in the case of gross or willful negligence on our part, be liable or responsible for any loss, costs, damages, or expenses incurred or sustained by anyone resulting from any interpretation made by any of our officers, agents or employees. These interpretations are also subject to our general terms and conditions set out in our current Price Schedule.

Comments

Thank you for using Log-Tech, Inc.
 (785) 625-3858

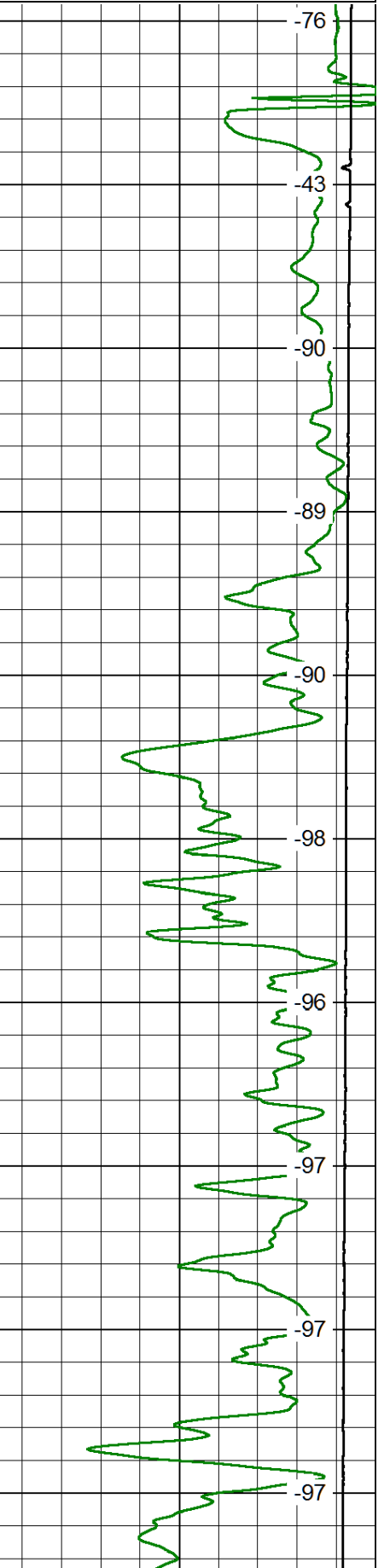
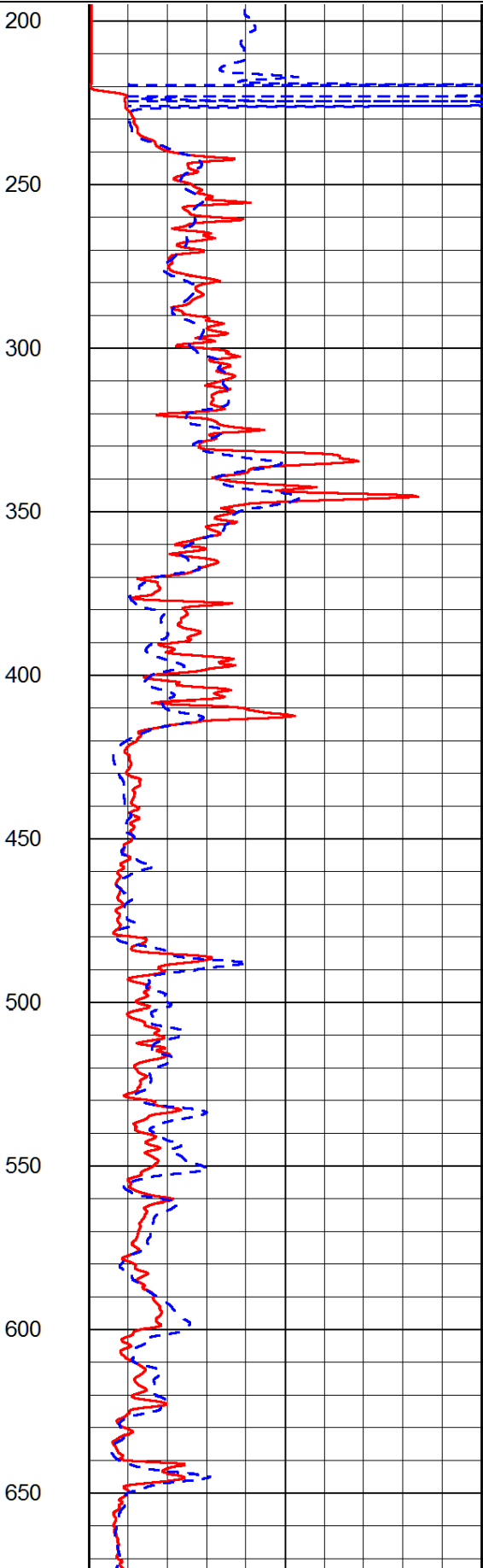
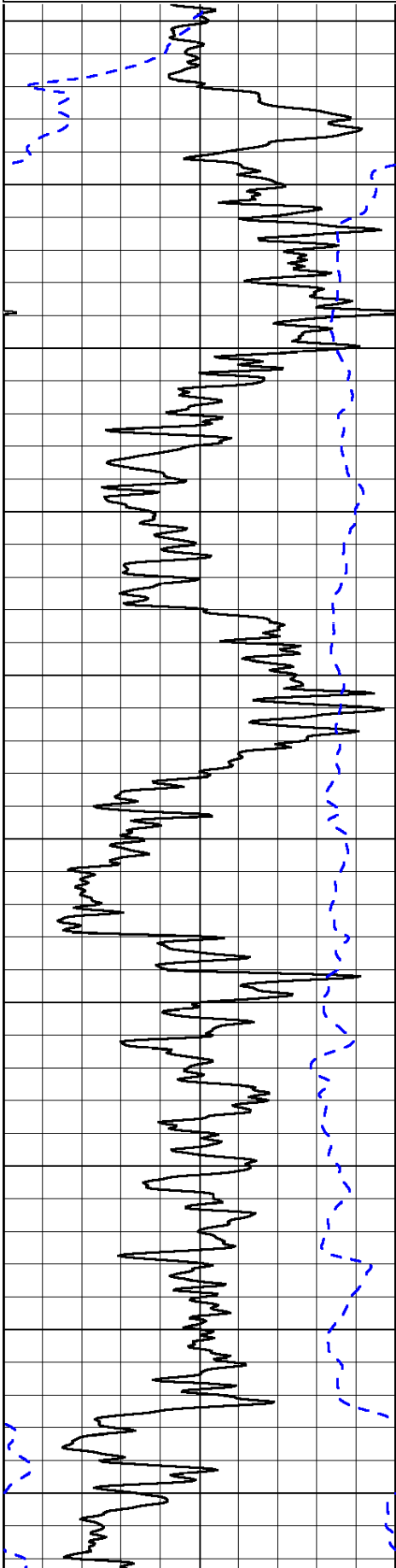
Plainville KS, South to AA RD,
 4 1/2 East, 1/4 North, East and South Into

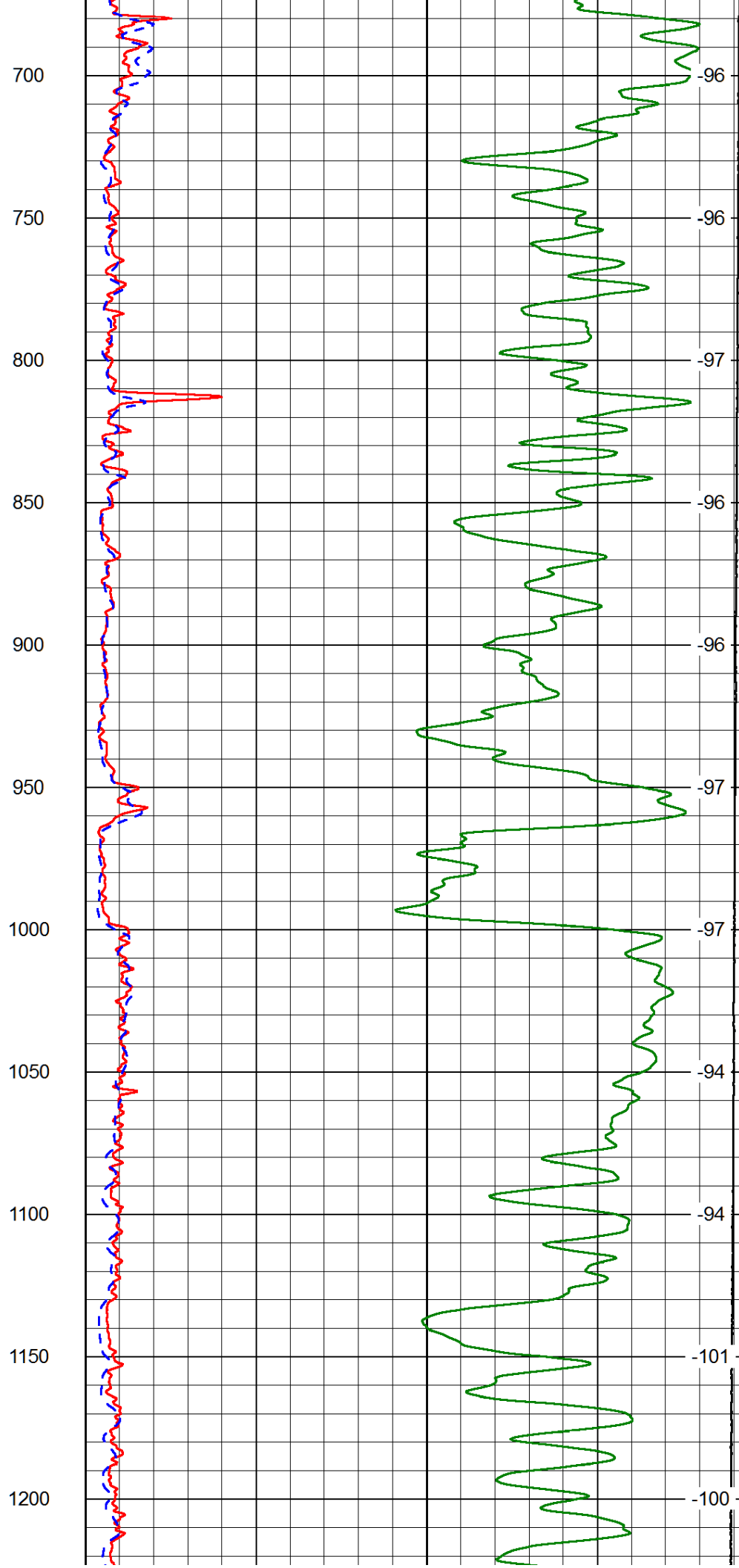
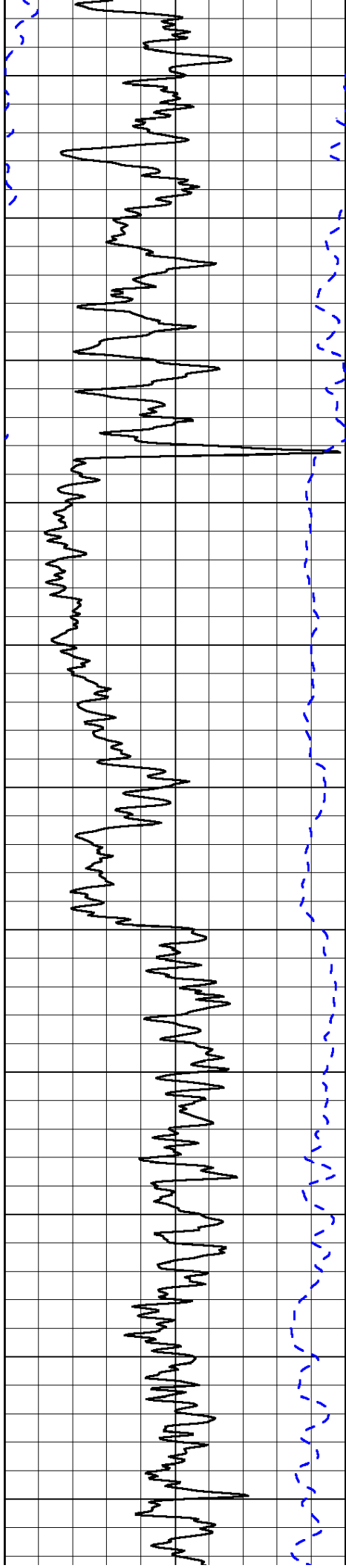
Database File:	tdi_stephanie_1hd.db
Dataset Pathname:	DIL/tdistk
Presentation Format:	dil2in
Dataset Creation:	Tue May 06 19:01:06 2014
Charted by:	Depth in Feet scaled 1:600

0	Gamma Ray	150
-200	SP (mV)	0

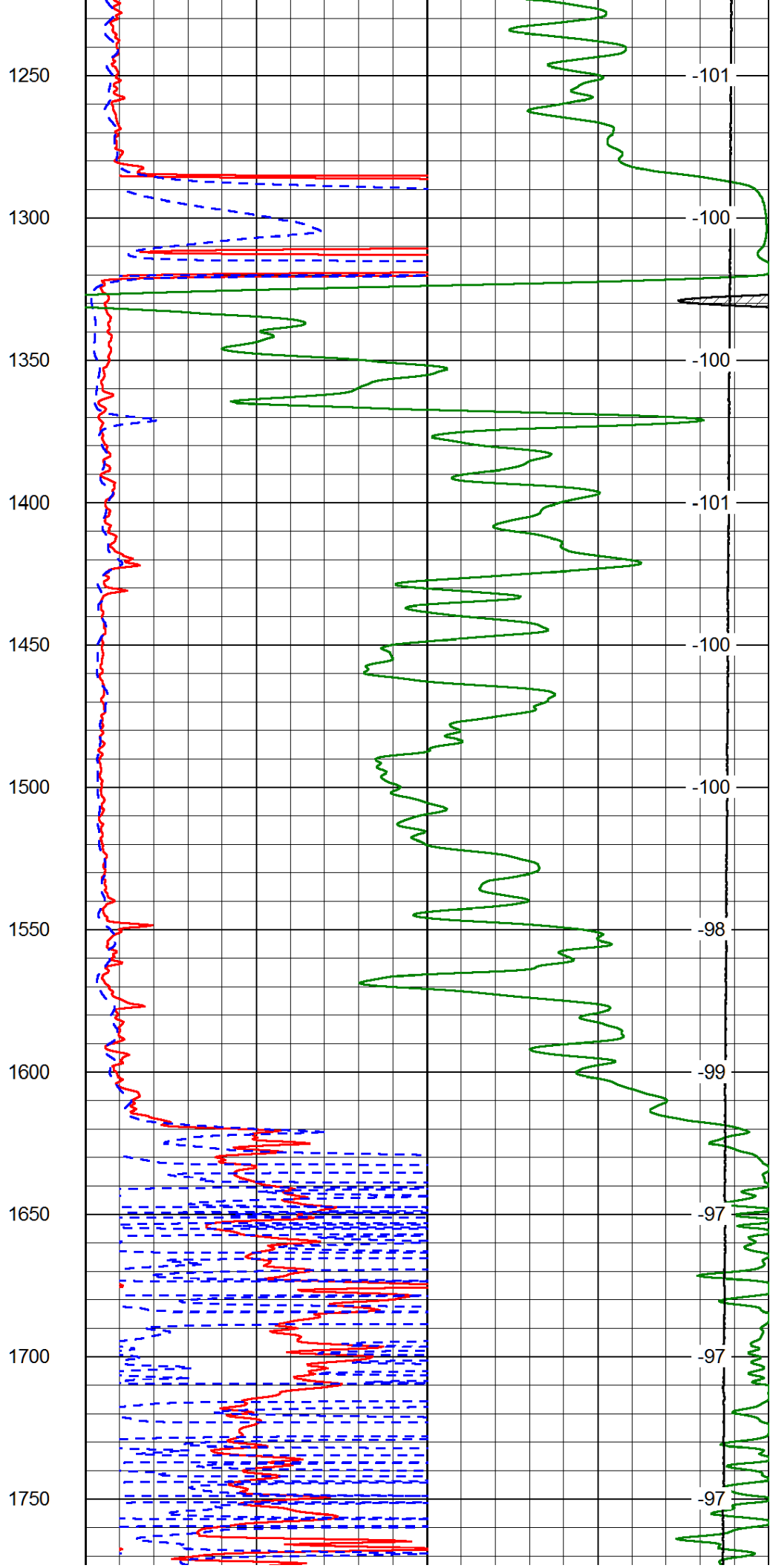
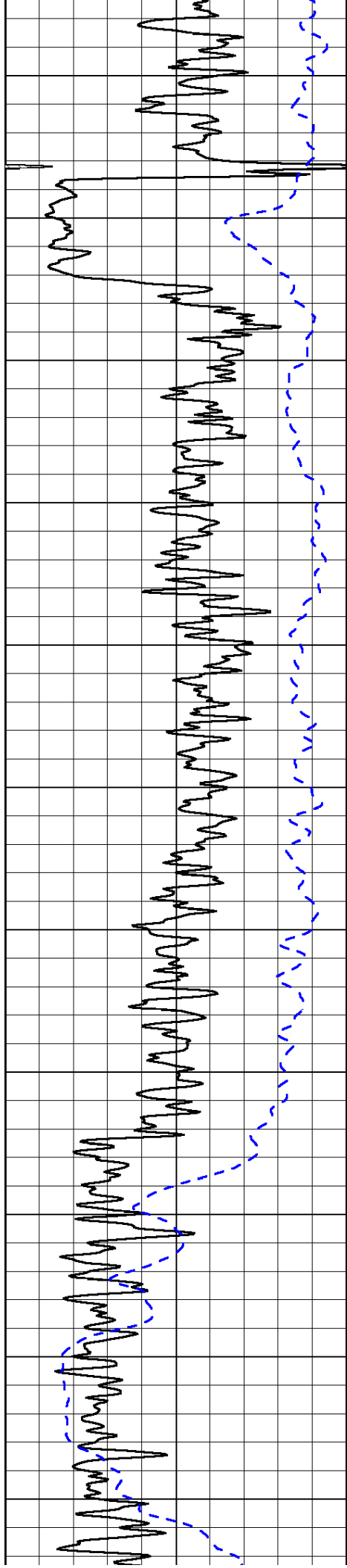
0	Shallow Resistivity	50
0	Deep Resistivity	50
1000	Conductivity	0
15000	Line Tension	0
50	Shallow Resistivity	500
50	Deep Resistivity	500

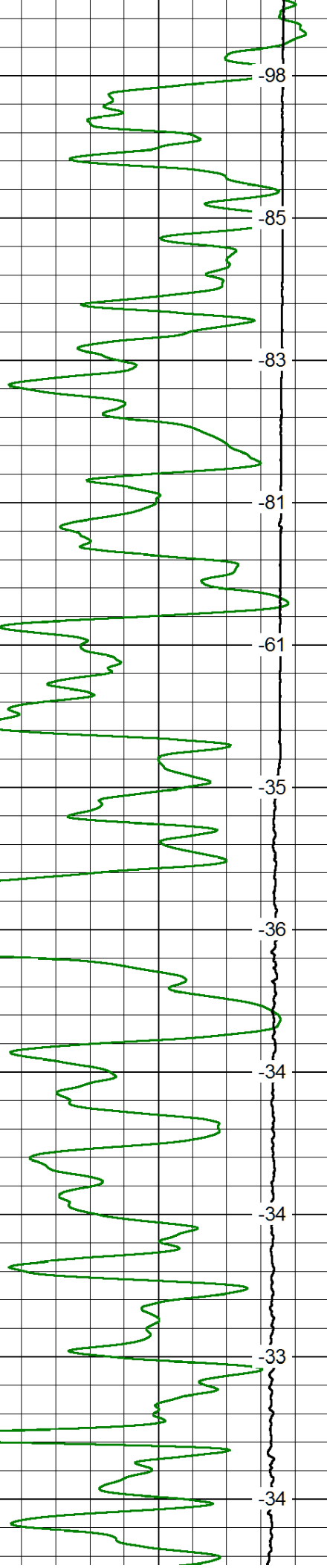
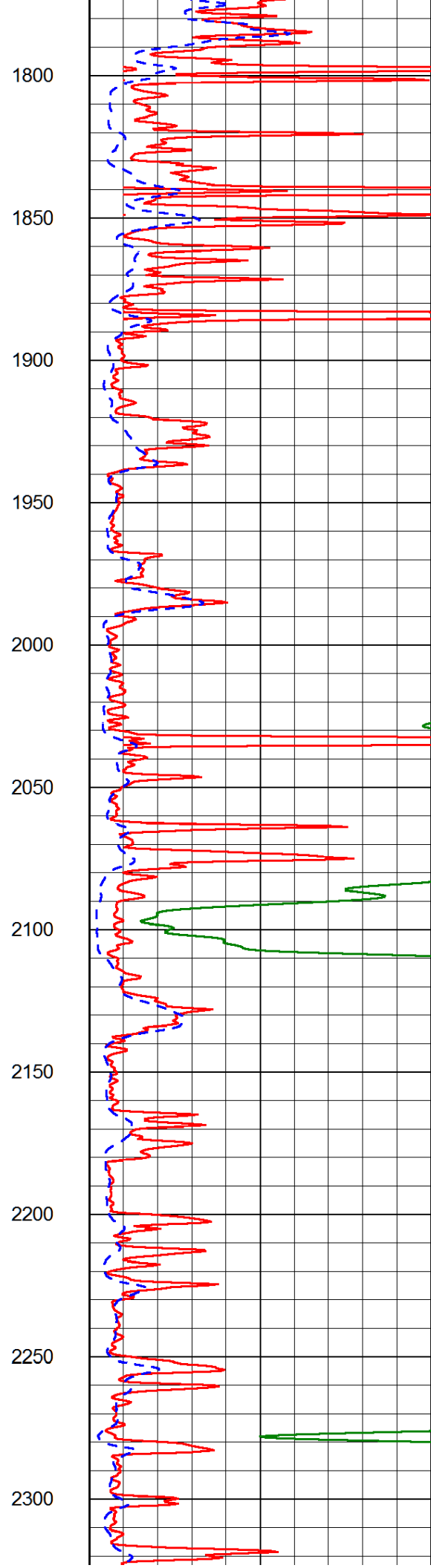
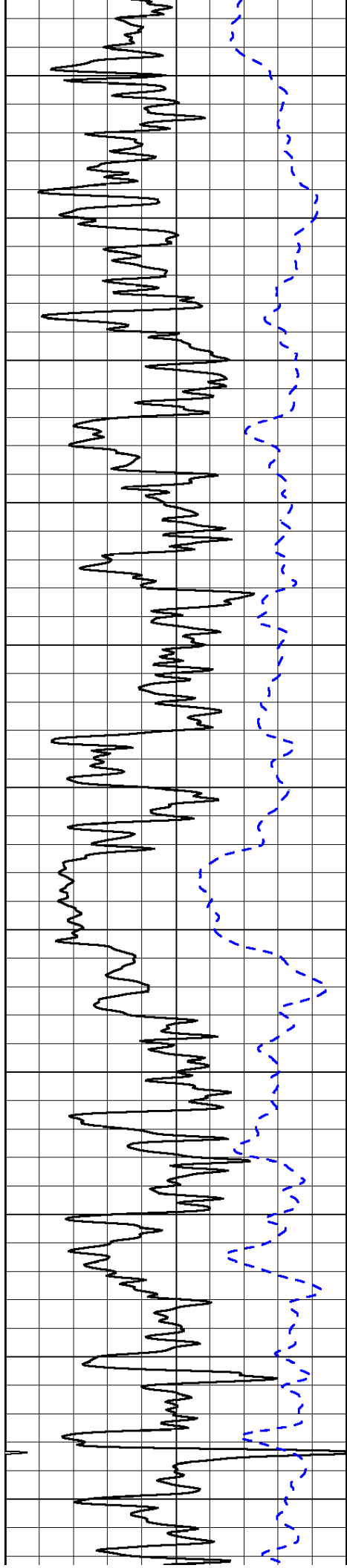
LSPD	0
------	---

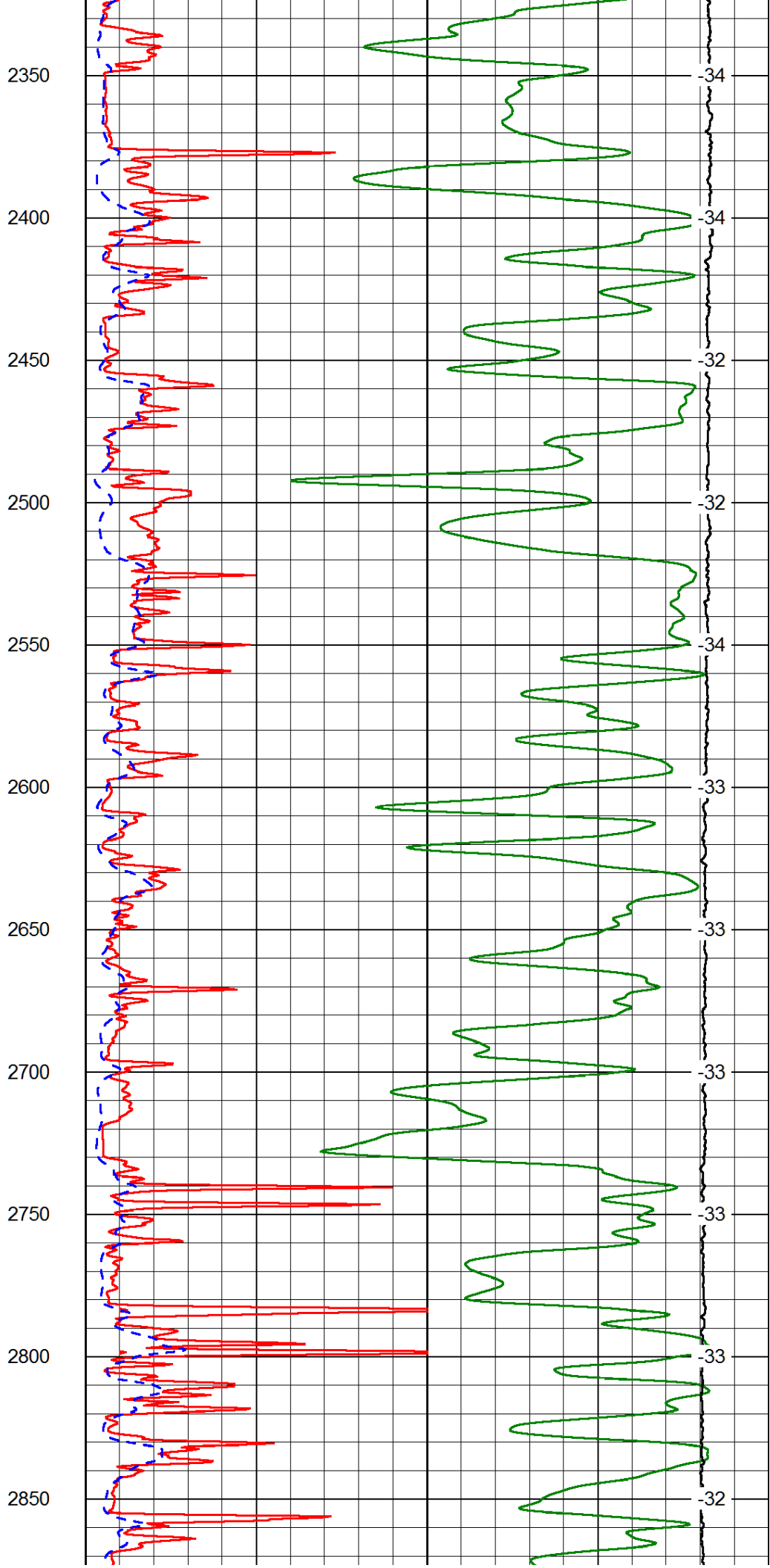
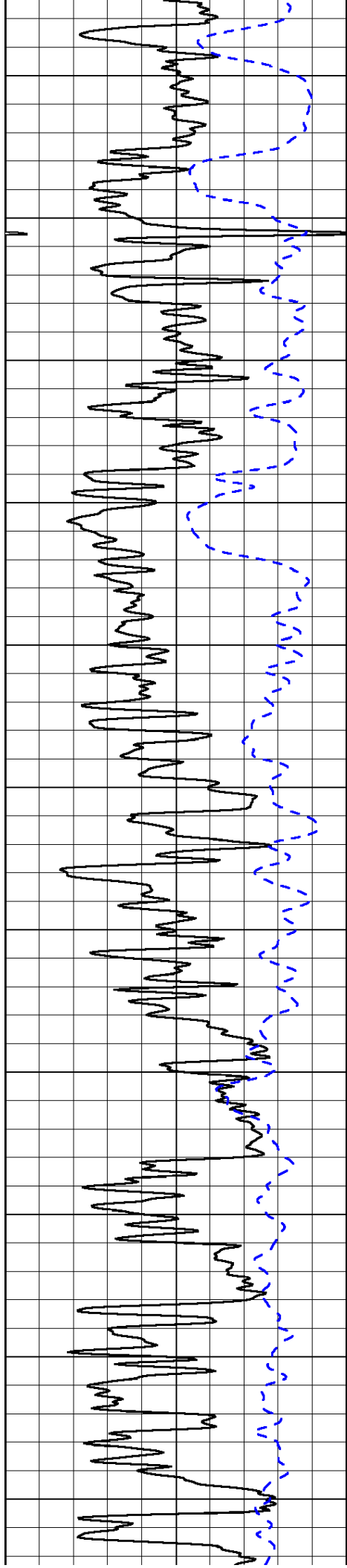


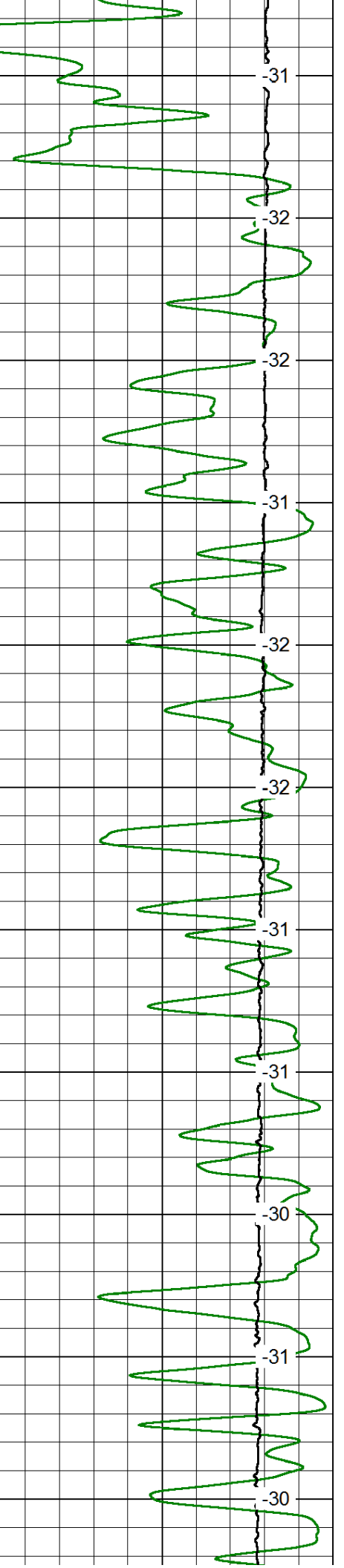
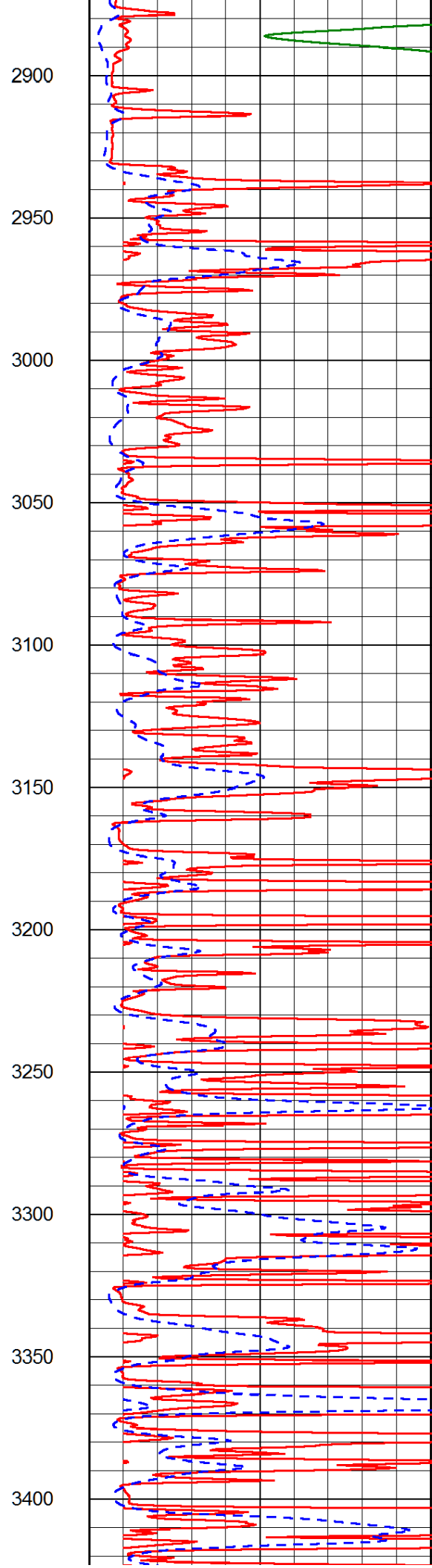
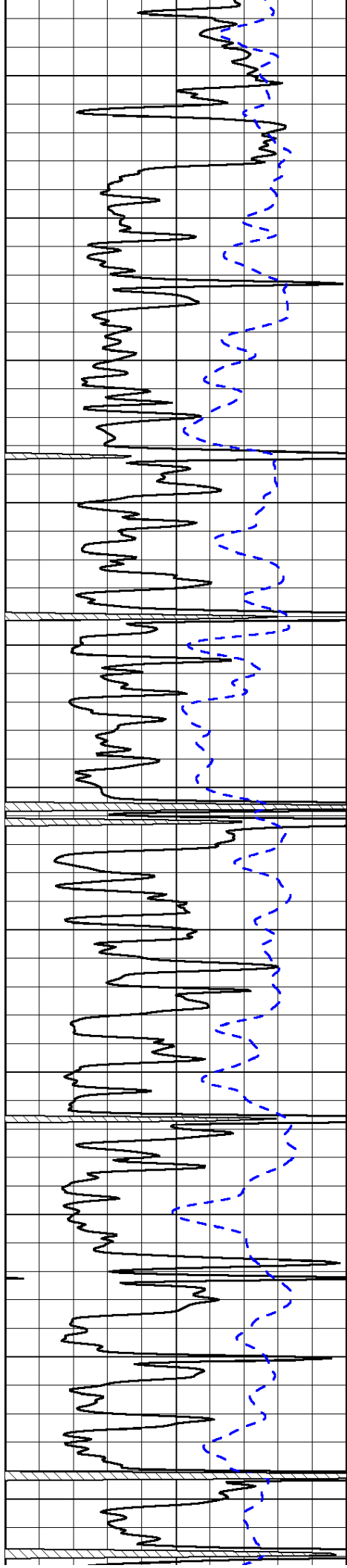


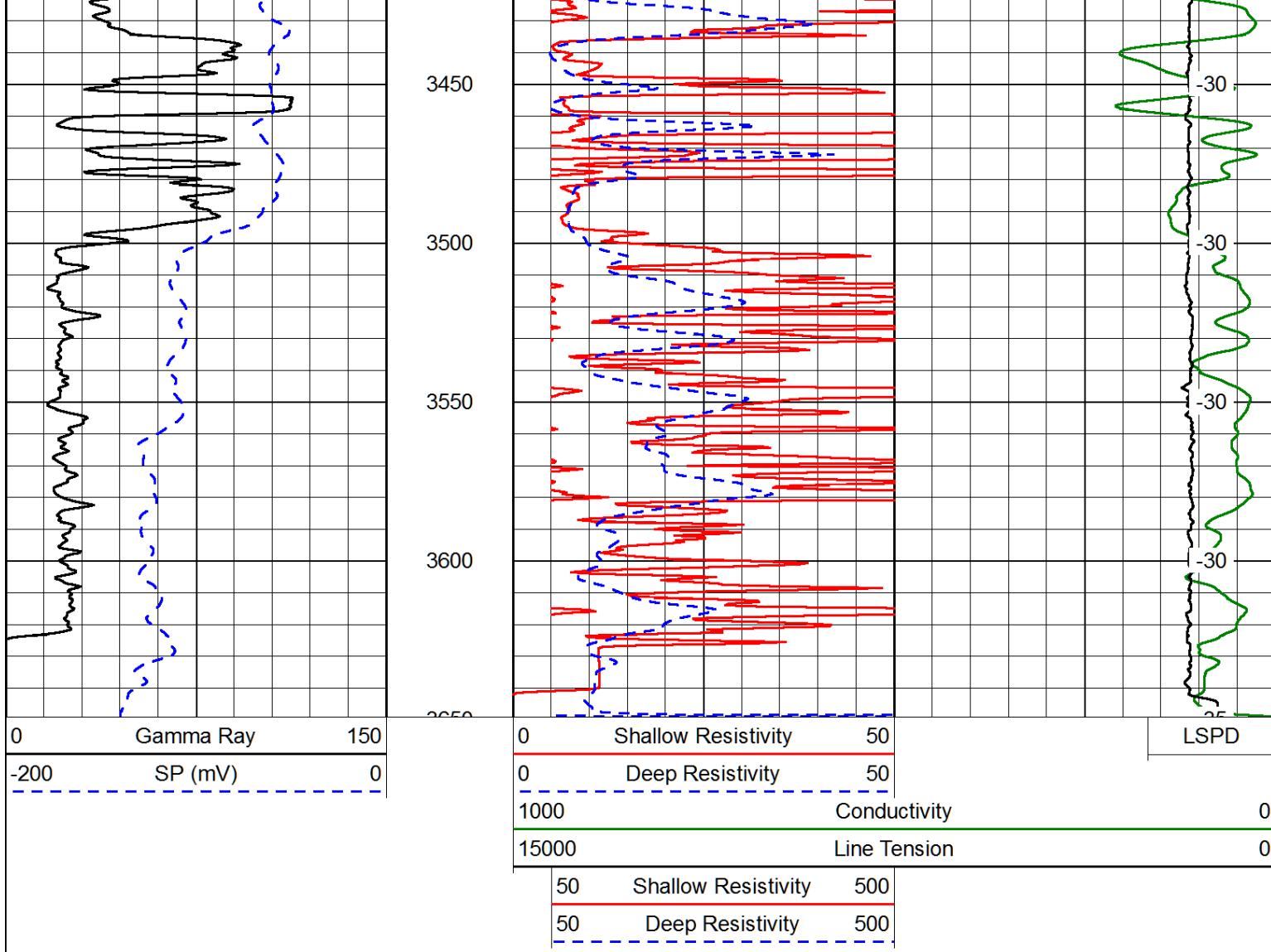
-96
-96
-97
-96
-96
-96
-97
-97
-94
-94
-101
-100



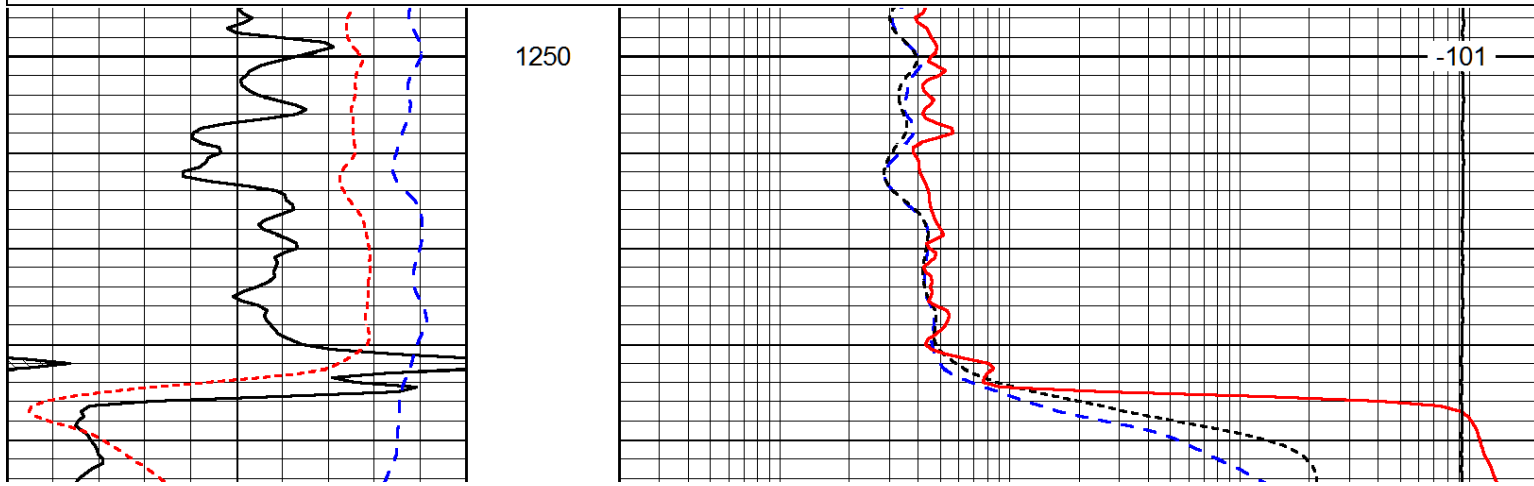
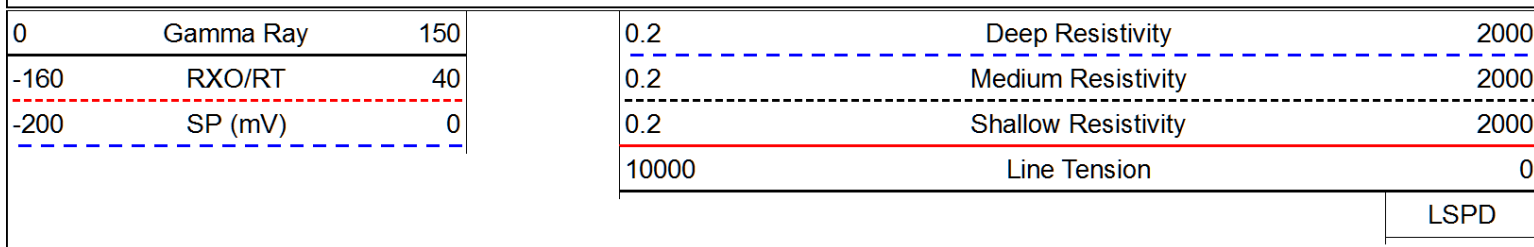


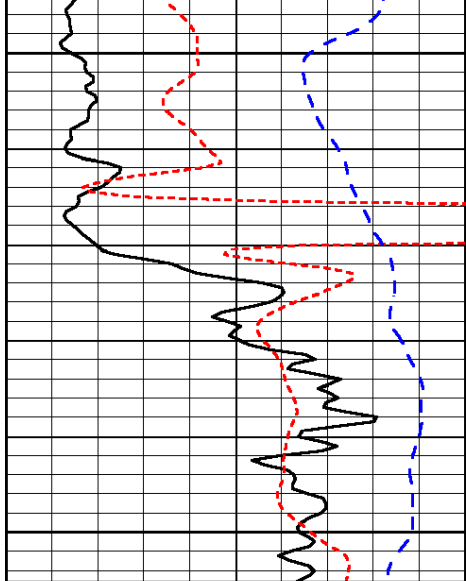






Database File: tdi_stephanie_1hd.db
 Dataset Pathname: DIL/tdistk
 Presentation Format: dil
 Dataset Creation: Tue May 06 19:01:06 2014
 Charted by: Depth in Feet scaled 1:240

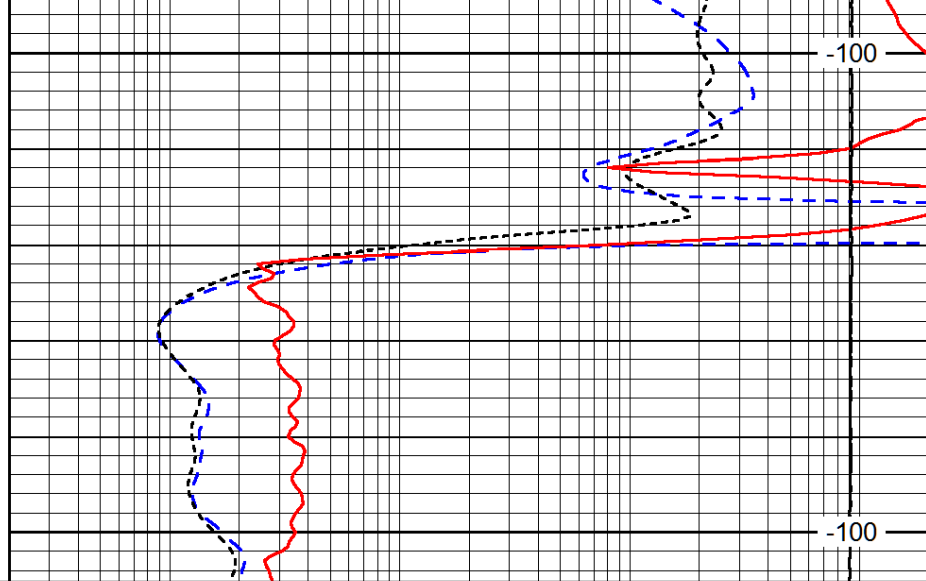




1300

1350

0	Gamma Ray	150
-160	RXO/RT	40
-200	SP (mV)	0



-100

-100

0.2	Deep Resistivity	2000
0.2	Medium Resistivity	2000
0.2	Shallow Resistivity	2000
10000	Line Tension	0

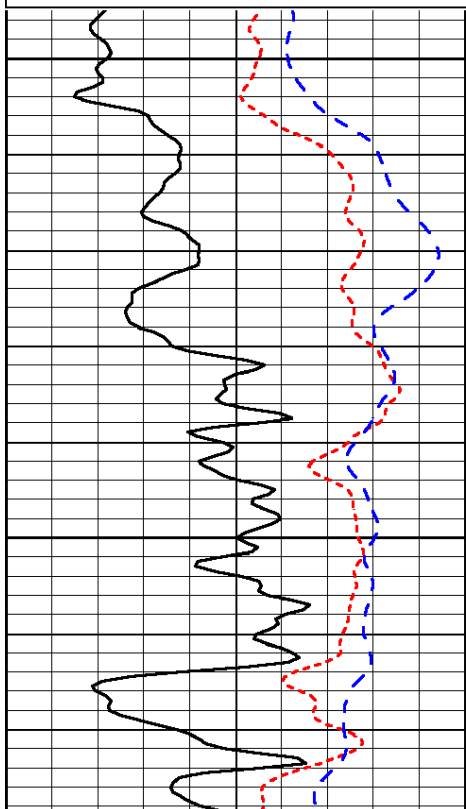
LSPD

Database File: tdi_stephanie_1hd.db
 Dataset Pathname: DIL/tdisk
 Presentation Format: dil
 Dataset Creation: Tue May 06 19:01:06 2014
 Charted by: Depth in Feet scaled 1:240

0	Gamma Ray	150
-160	RXO/RT	40
-200	SP (mV)	0

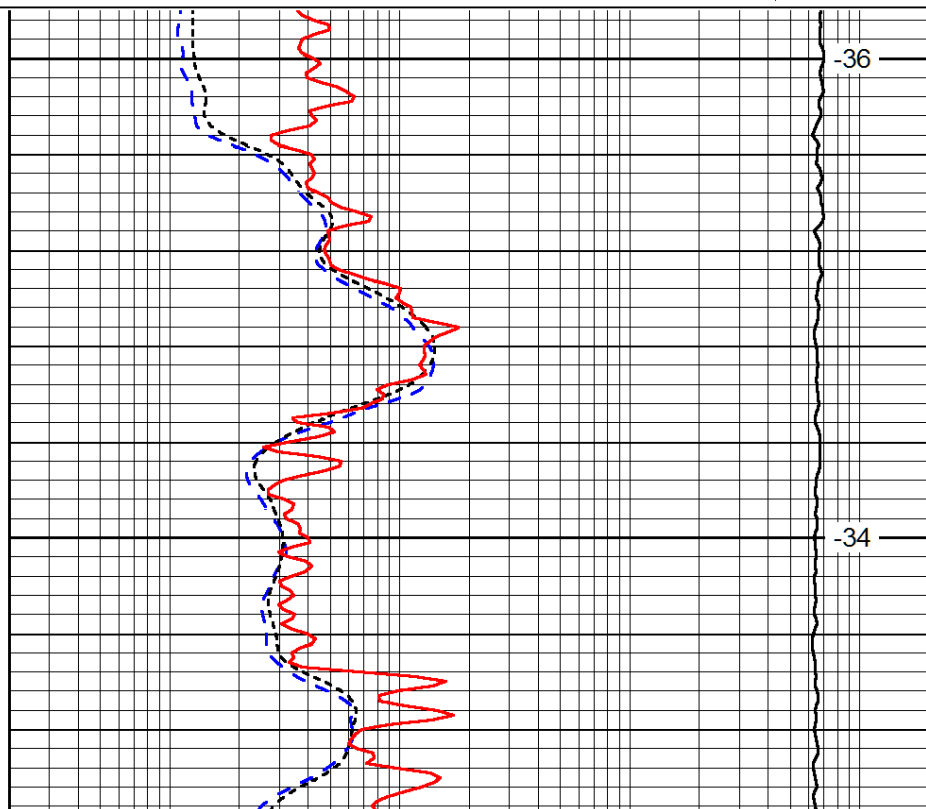
0.2	Deep Resistivity	2000
0.2	Medium Resistivity	2000
0.2	Shallow Resistivity	2000
10000	Line Tension	0

LSPD



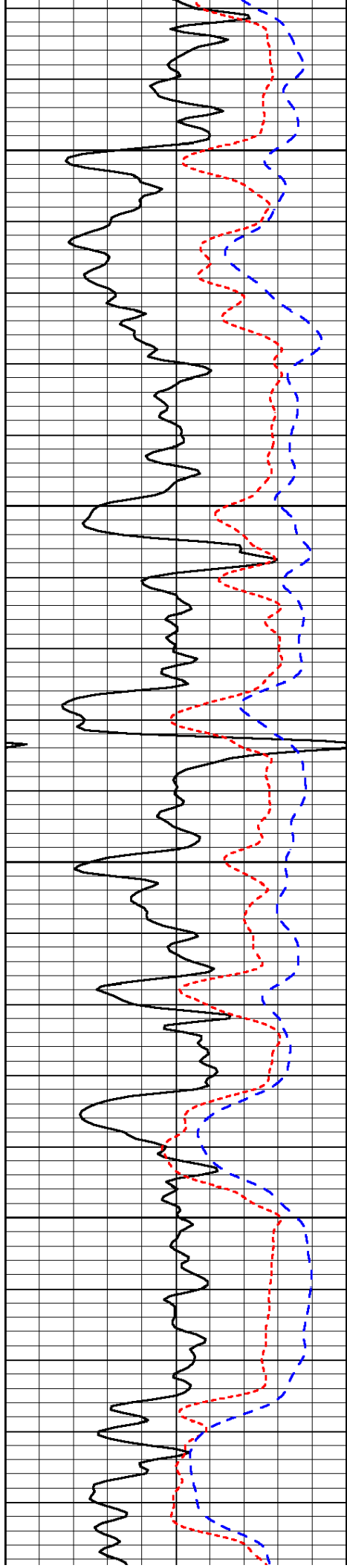
2100

2150



-36

-34

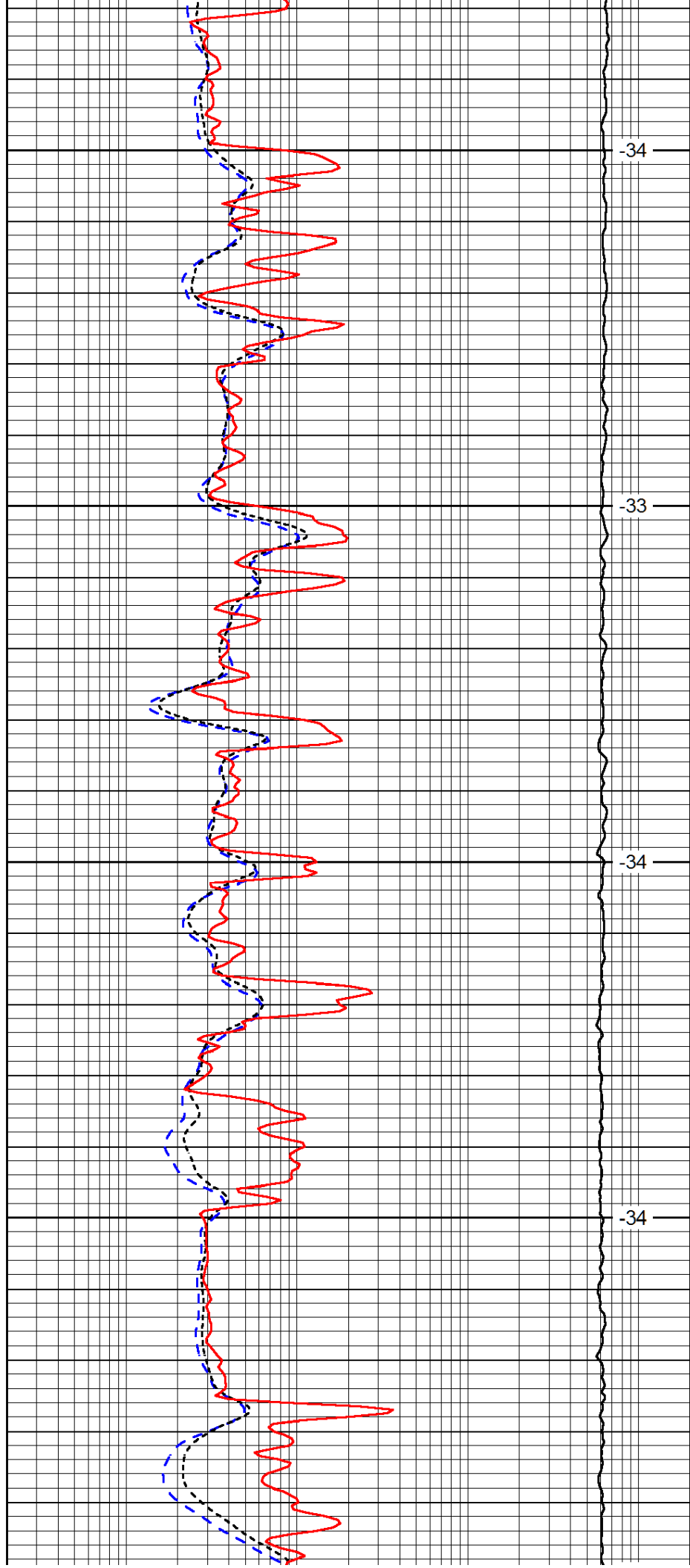


2200

2250

2300

2350

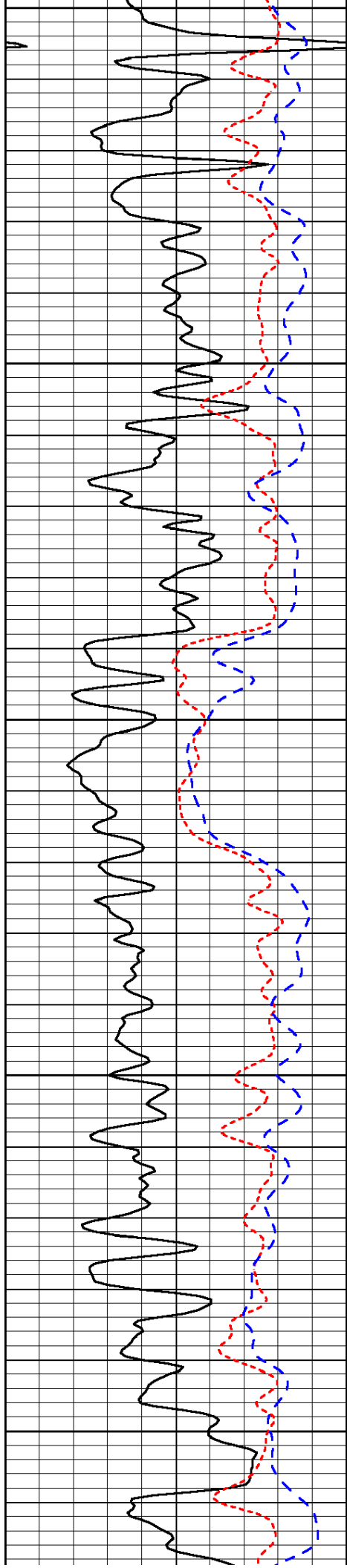


-34

-33

-34

-34



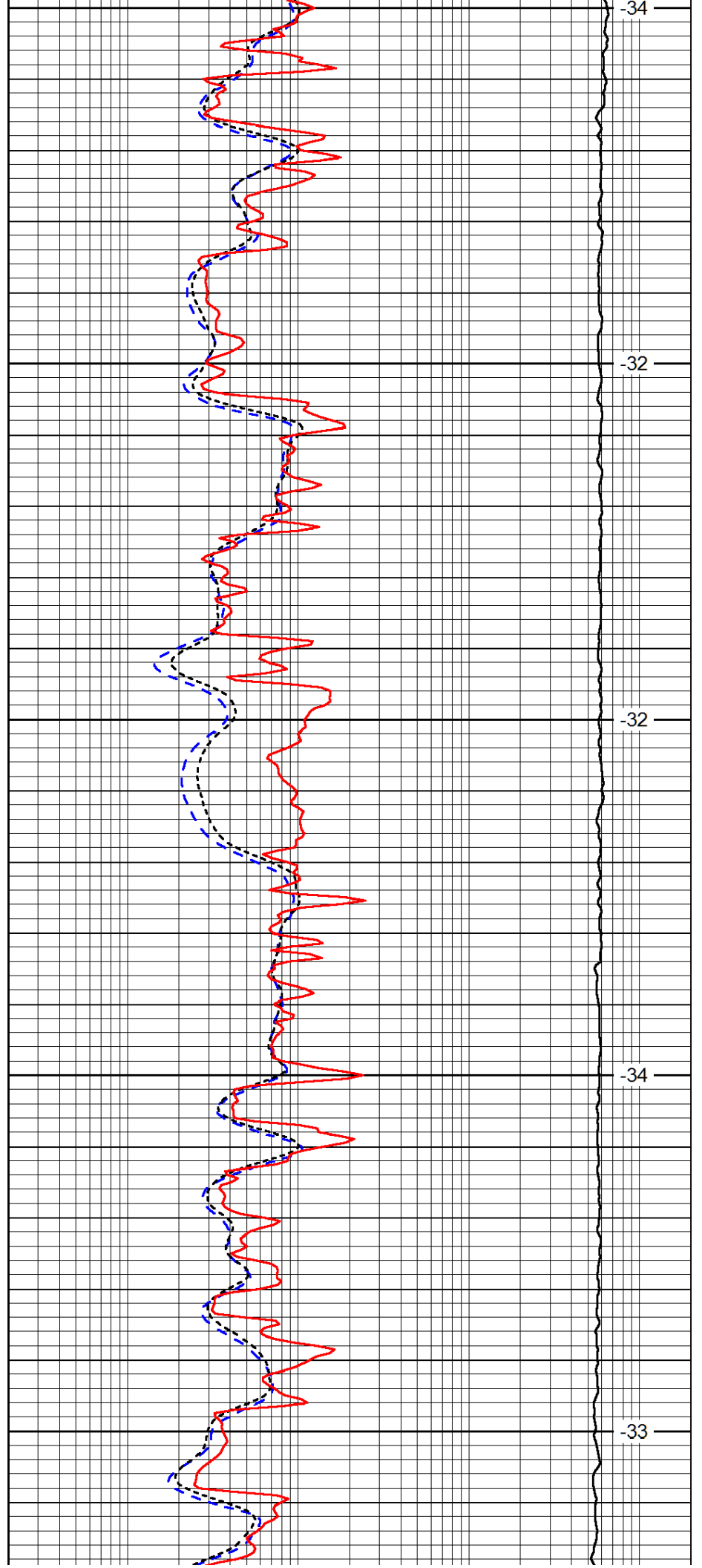
2400

2450

2500

2550

2600



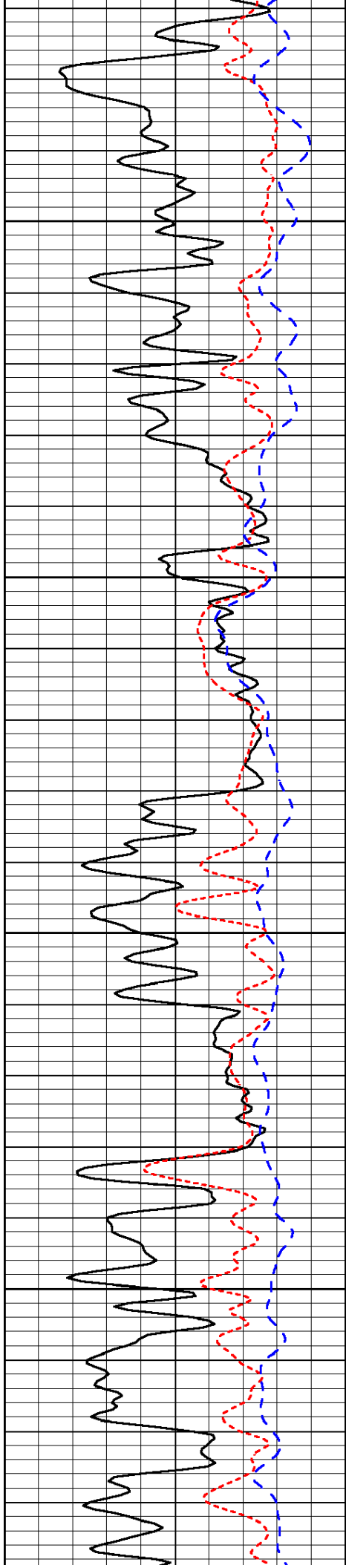
-34

-32

-32

-34

-33

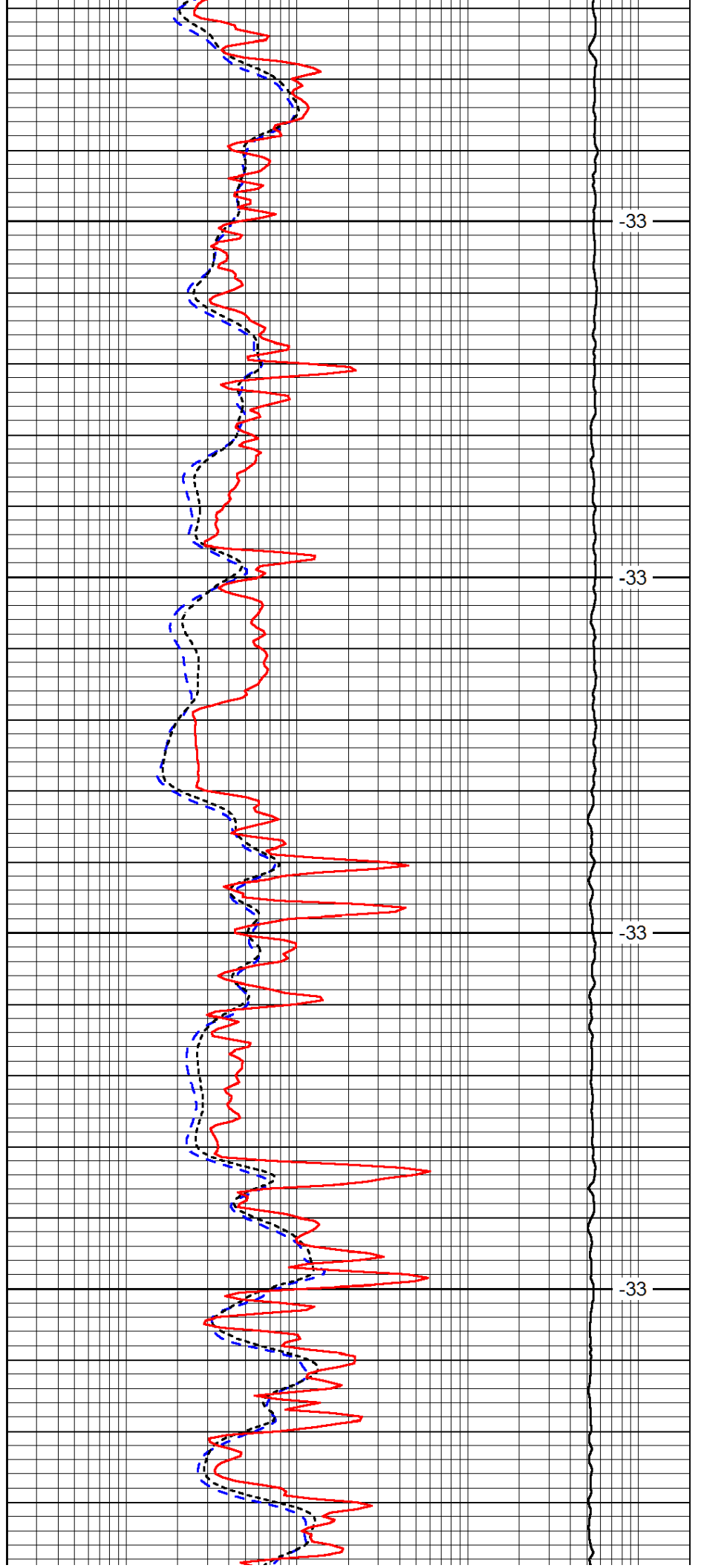


2650

2700

2750

2800

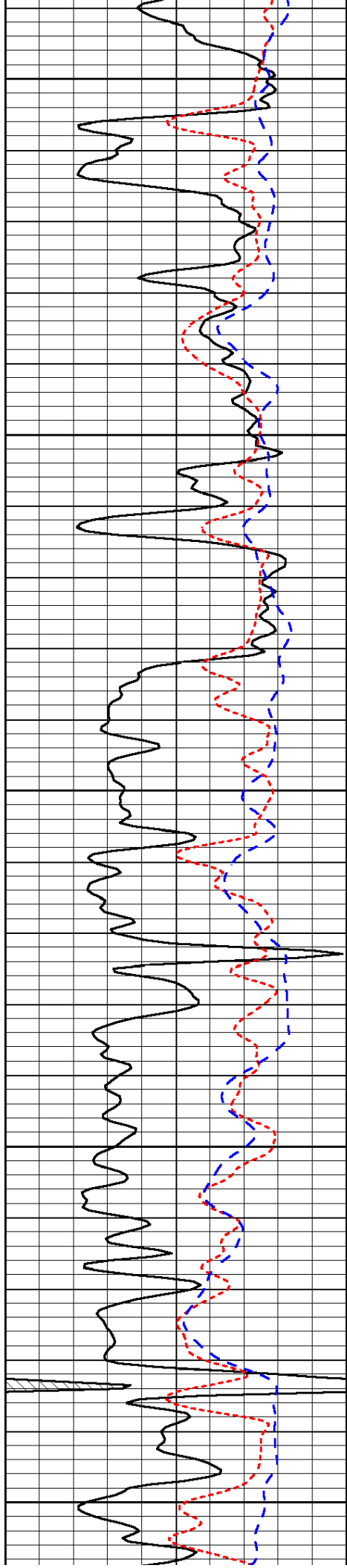


-33

-33

-33

-33



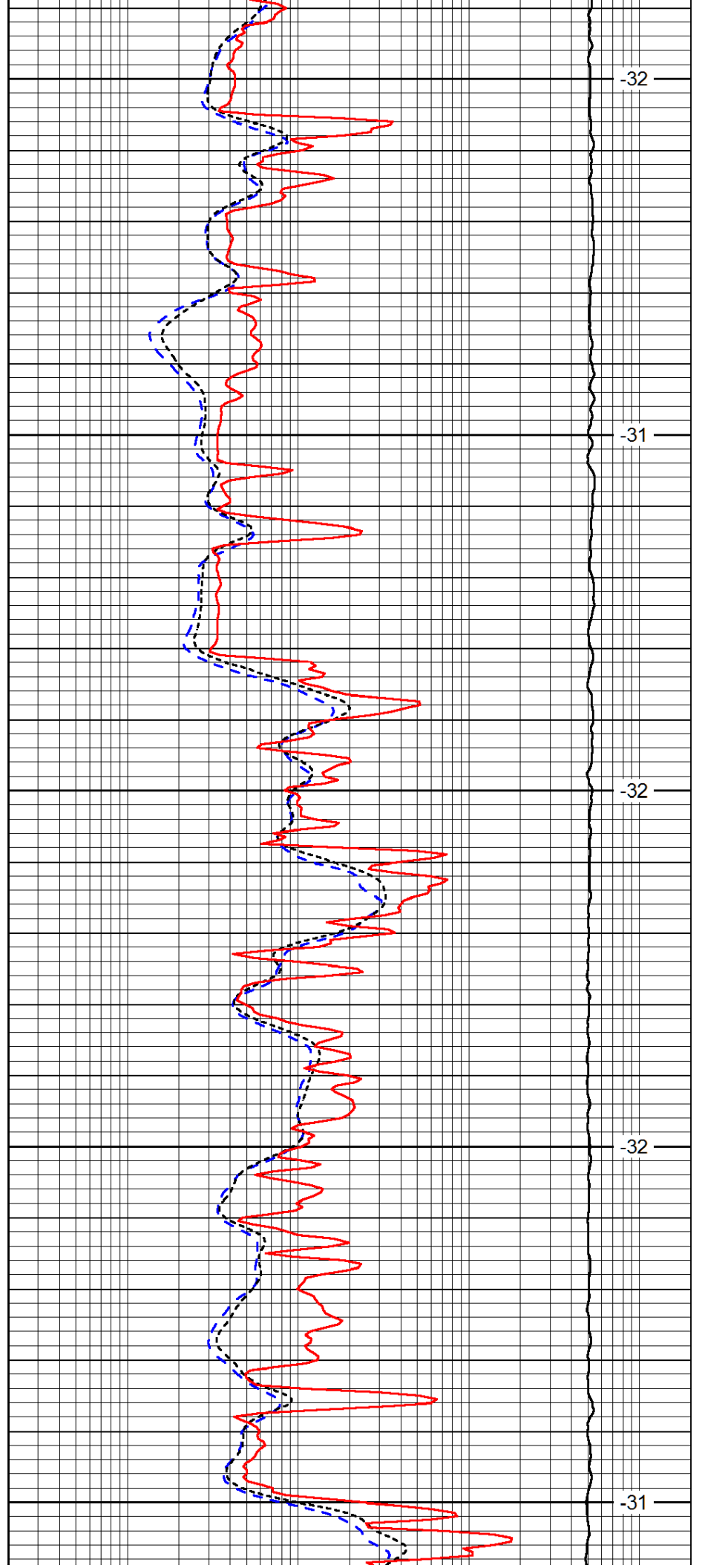
2850

2900

2950

3000

3050



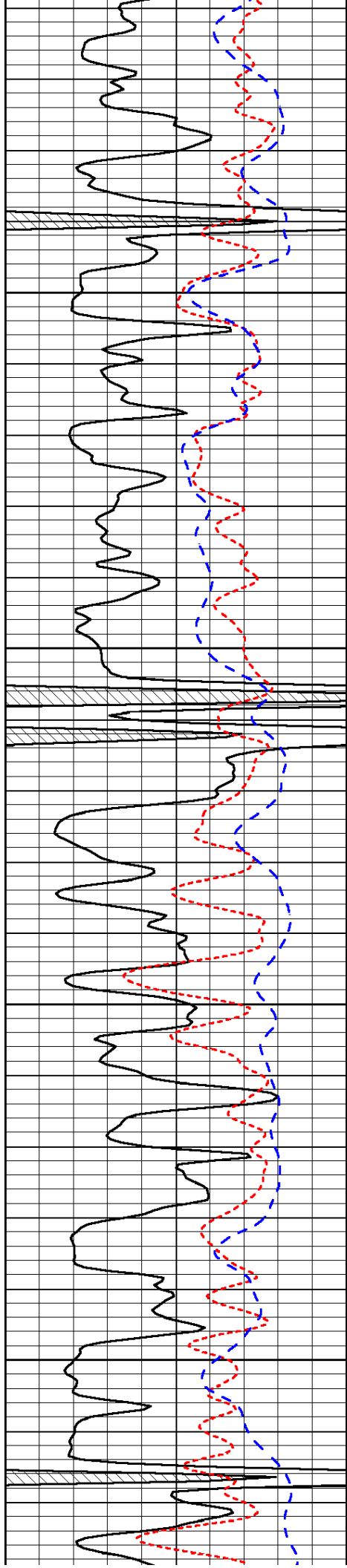
-32

-31

-32

-32

-31

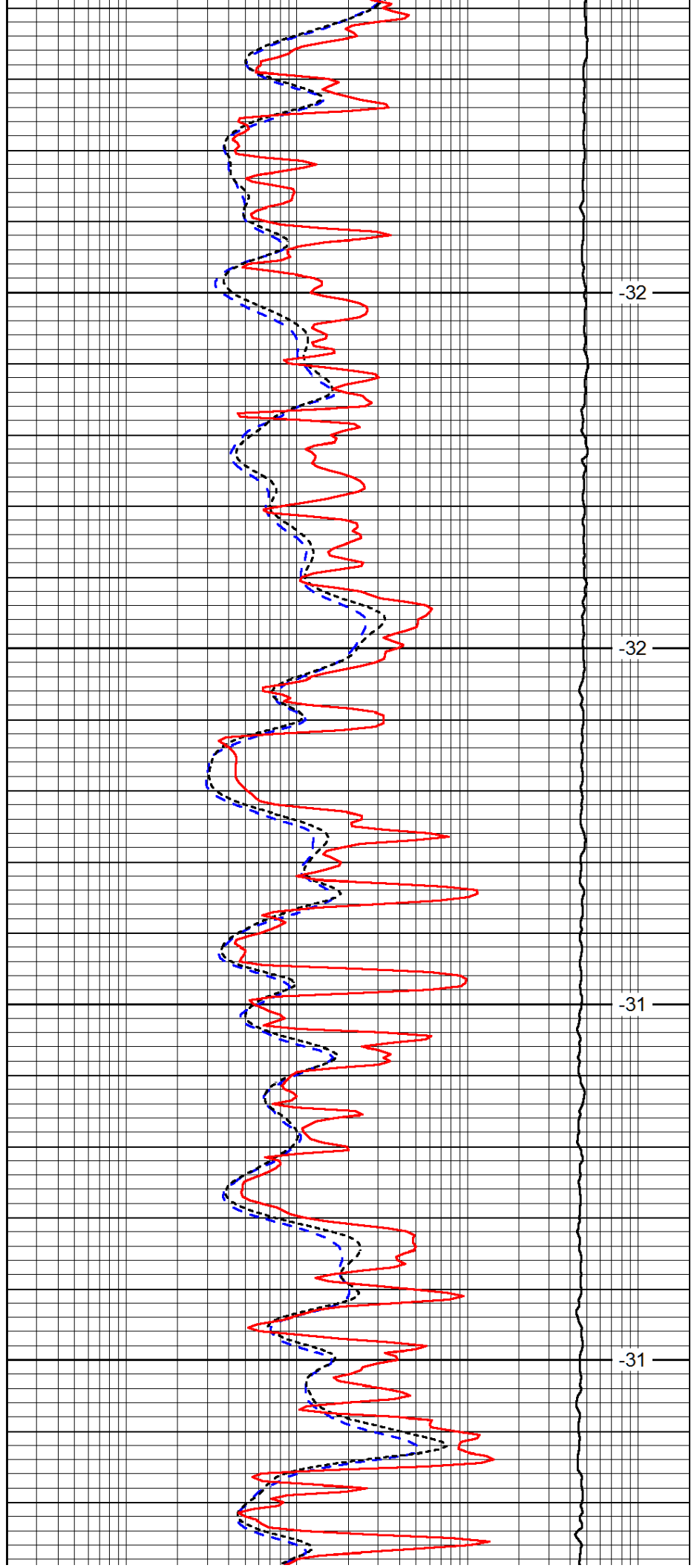


3100

3150

3200

3250

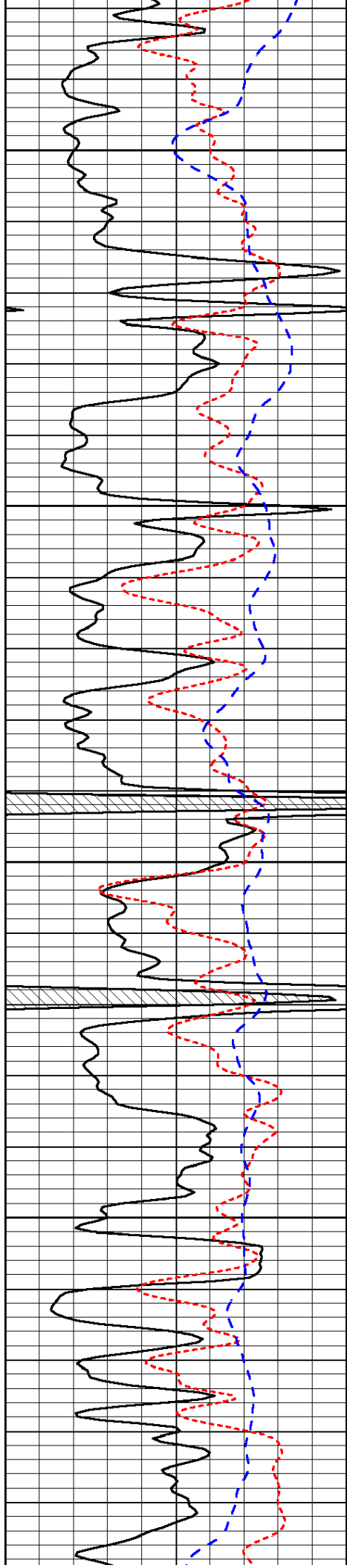


-32

-32

-31

-31

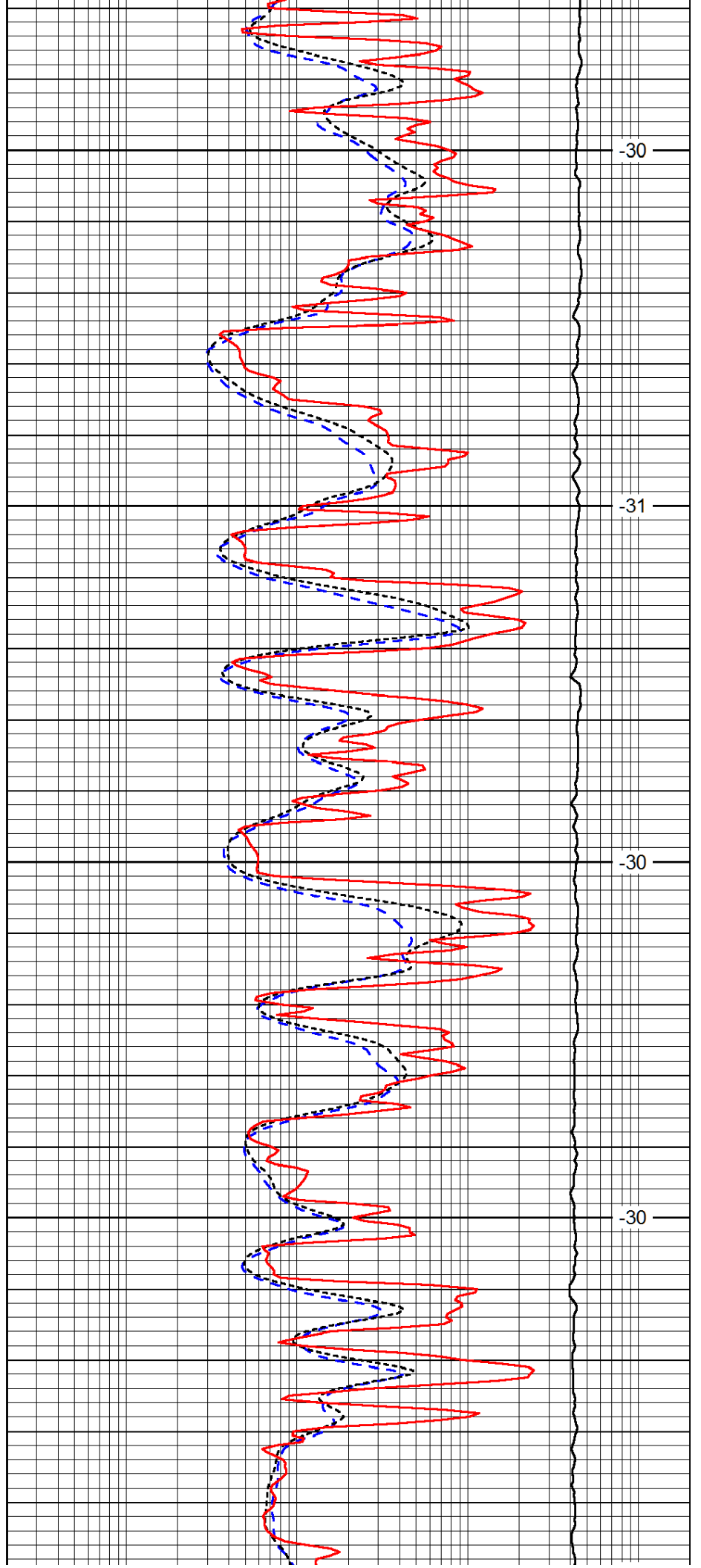


3300

3350

3400

3450

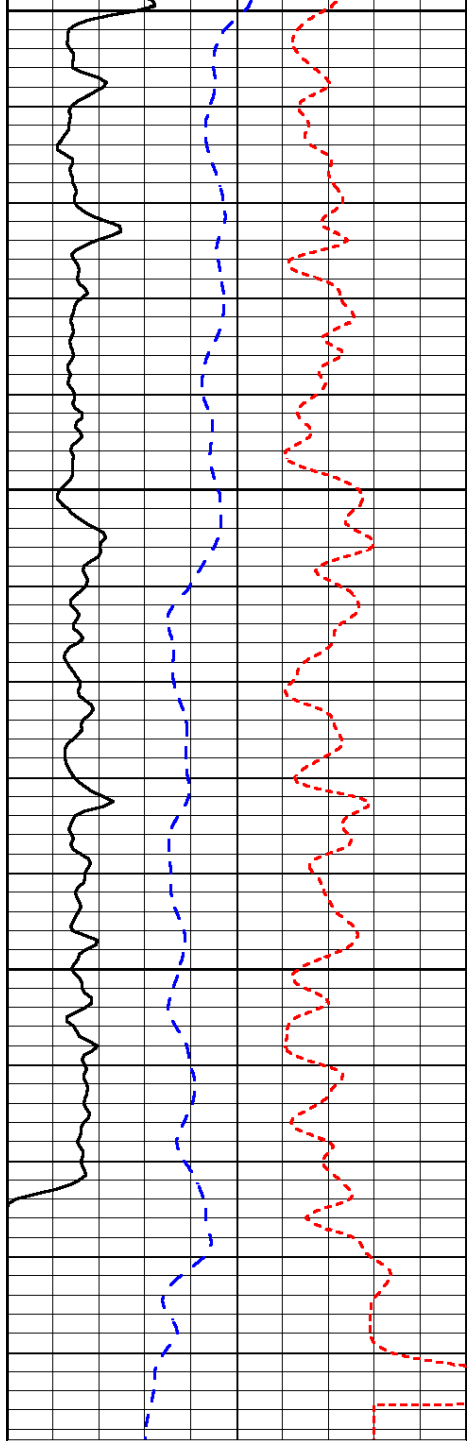


-30

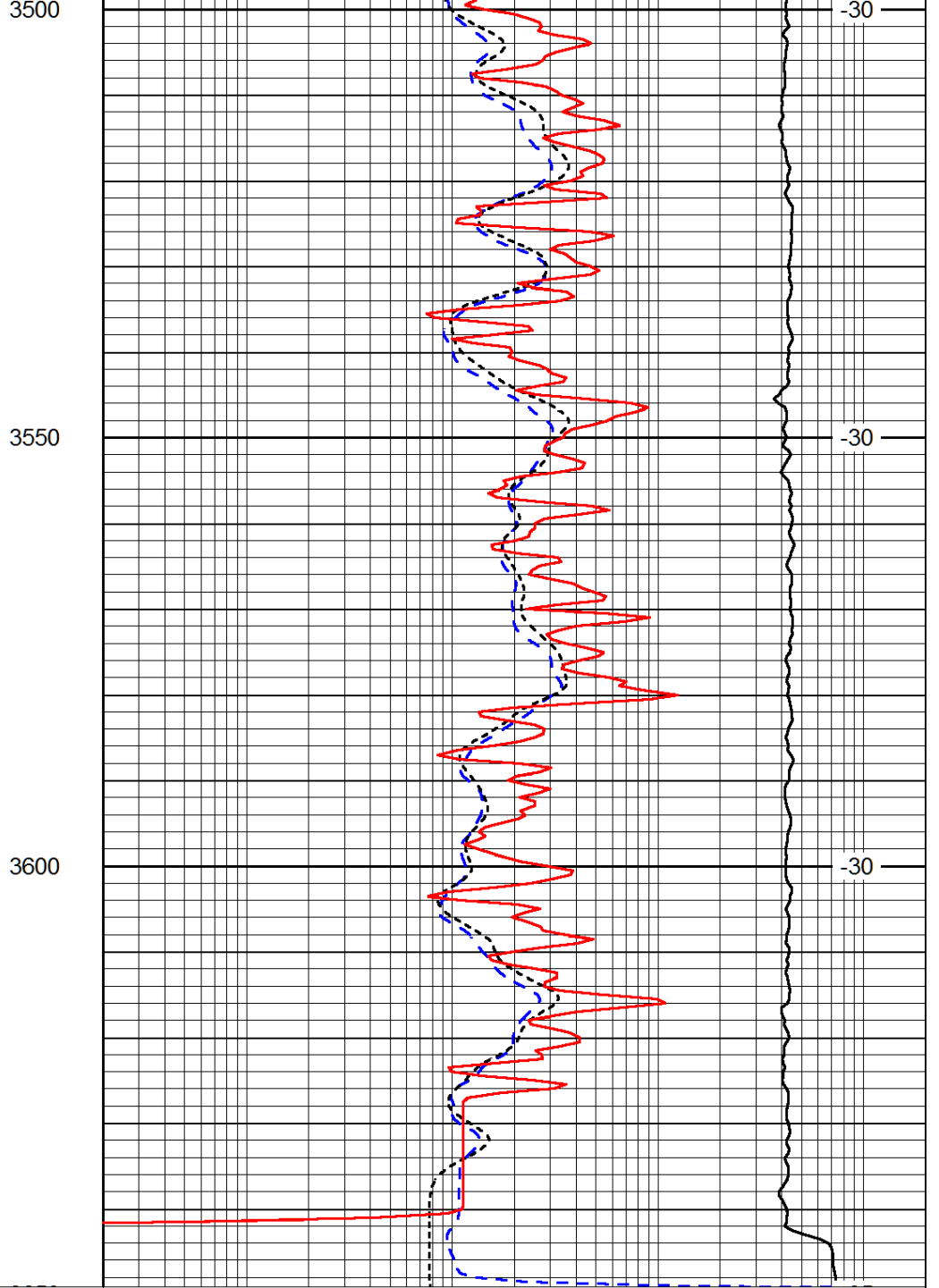
-31

-30

-30



0	Gamma Ray	150
-160	RXO/RT	40
-200	SP (mV)	0



0.2	Deep Resistivity	2000
0.2	Medium Resistivity	2000
0.2	Shallow Resistivity	2000
10000	Line Tension	0

LSPD