



Pioneer Energy Services

# Microresistivity Log

15-051-26,683-00-00

API No.

Company **Richland Oil Investments, LLC**

Well **Schonthalder #4**

Field **Lucky Lady**

County **Ellis** State

**Kansas**

Location

**SE-NW-SW-NW  
1813' FNL & 390' FWL**

Sec: **30**

Twp: **11S**

Rge: **19W**

Other Services  
CNL/CDL  
DIL

Elevation

K.B. 2041  
D.F. 2035  
G.L. 2035

Permanent Datum **Ground Level**

Log Measured From **Kelly Bushing**

Elevation **2035**

Drilling Measured From **Kelly Bushing**

6 Ft. Above Perm. Datum

Date

5/1/2014

Run Number

One

Depth Driller

3690

Depth Logger

3692

Bottom Logged Interval

3691

Top Log Interval

2950

Casing Driller

8.625 @ 270

Casing Logger

262

Bit Size

7.875

Type Fluid in Hole

Chemical

Salinity,ppm CL

2,500

Density / Viscosity

9.3 49

pH / Fluid Loss

10.0 6.8

Source of Sample

Flowline

Rm @ Meas. Temp

.68 @ 59

Rmf @ Meas. Temp

.51 @ 59

Rmc @ Meas. Temp

.91 @ 59

Source of Rmf / Rmc

Charts

Rm @ BHT

.35 @ 115

Operating Rig Time

2 1/2 Hours

Max Rec. Temp. F

115

Equipment Number

91

Location

Hays

Recorded By

J. Hennickson

Witnessed By

Steve Murphy

Anthony Luna

<<< Fold Here >>>

All interpretations are opinions based on inferences from electrical or other measurements and we cannot and do not guarantee the accuracy or correctness of any interpretation, and we shall not, except in the case of gross or willful negligence on our part, be liable or responsible for any loss, costs, damages, or expenses incurred or sustained by anyone resulting from any interpretation made by any of our officers, agents or employees. These interpretations are also subject to our general terms and conditions set out in our current Price Schedule.

### Comments

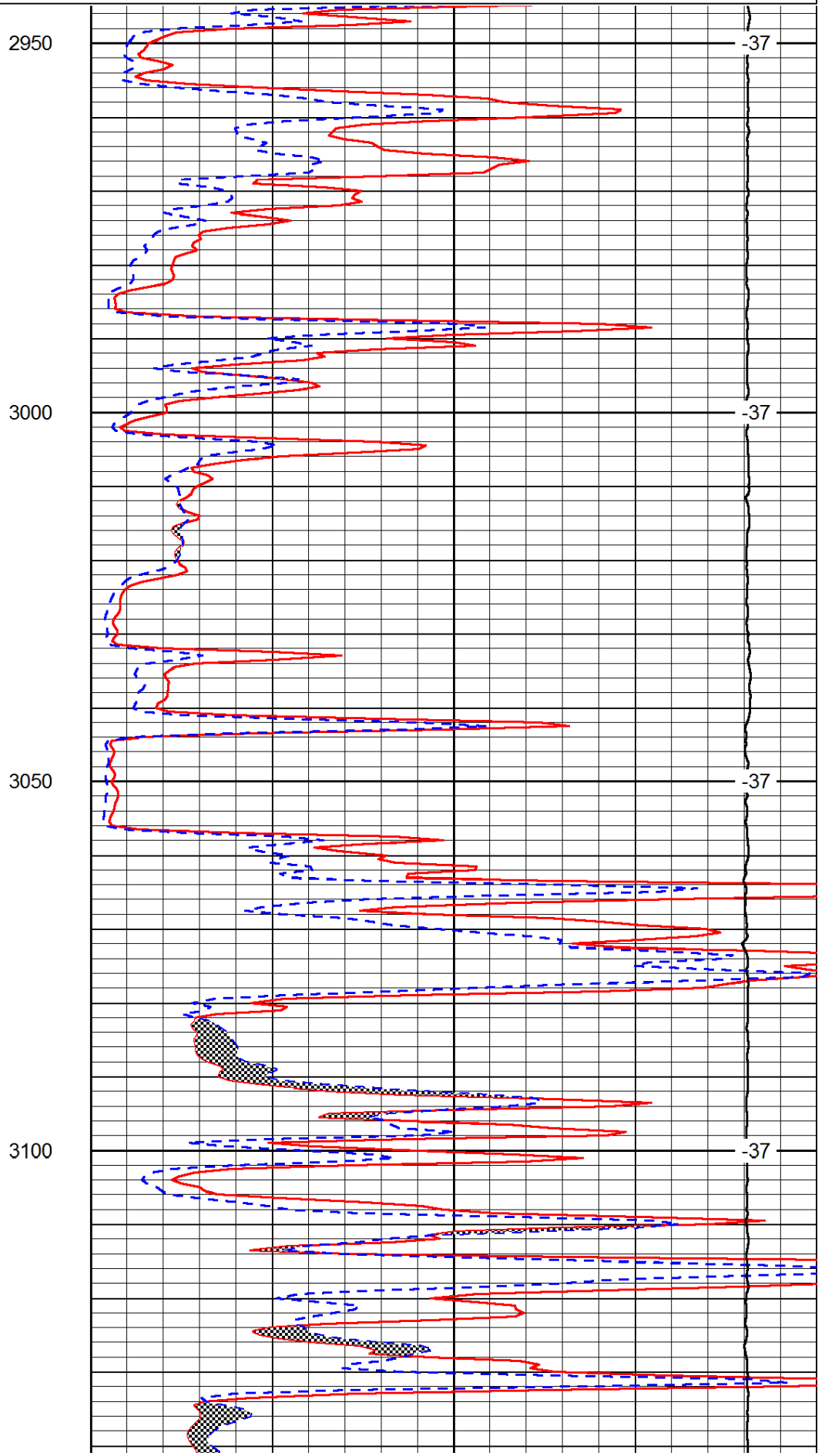
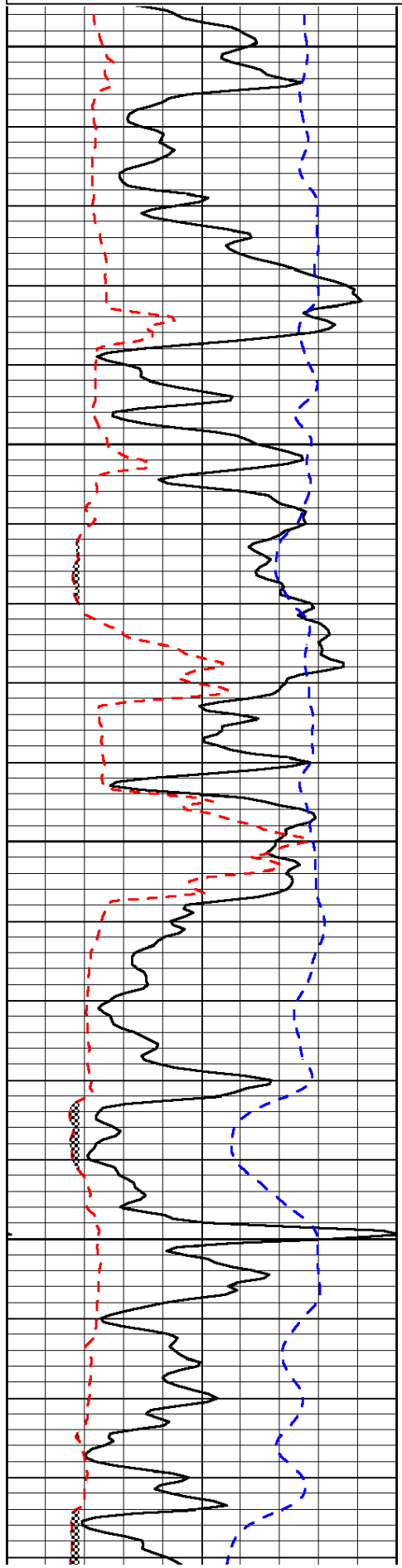
Thank you for using Pioneer Energy Services  
[www.pioneerenergy.com](http://www.pioneerenergy.com)  
 785 625 3858  
 Yocemento Exit on I70  
 North to Buskeye Rd, West to 170th Ave, North to Curves,  
 West Into at Cattle Guard(Tank Batteries)

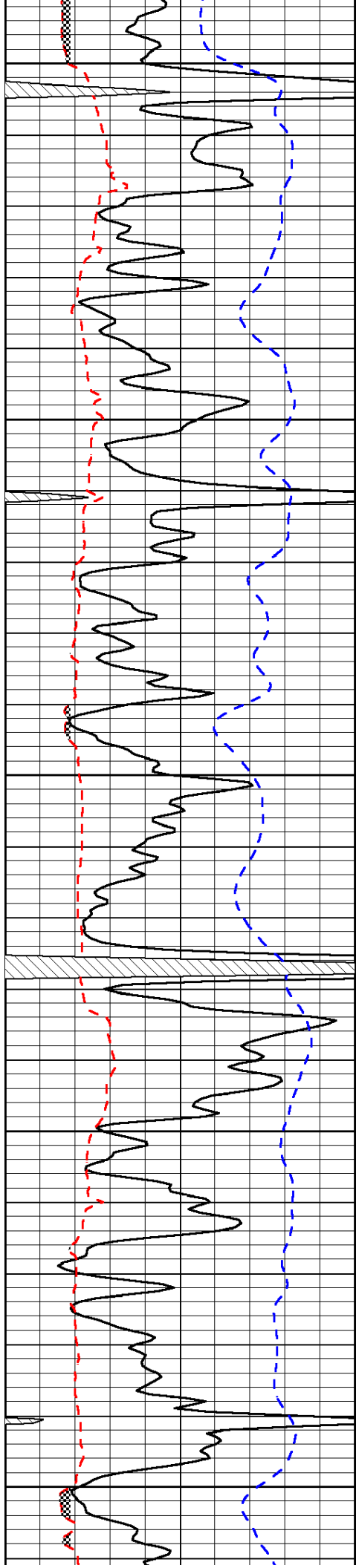
Database File: c:\warrior\data\richland\_schonthalder #4\richland\_050114hd.db  
 Dataset Pathname: DIL/richstk  
 Presentation Format: micro  
 Dataset Creation: Thu May 01 22:59:14 2014  
 Charted by: Depth in Feet scaled 1:240

0	Gamma Ray	150
6	Micro Log Caliper (GAPI)	16
-200	SP (mV)	0

0	Micro Inverse 1 X 1	40
0	Micro Normal 2"	40
15000	Line Weight	0

LSPD





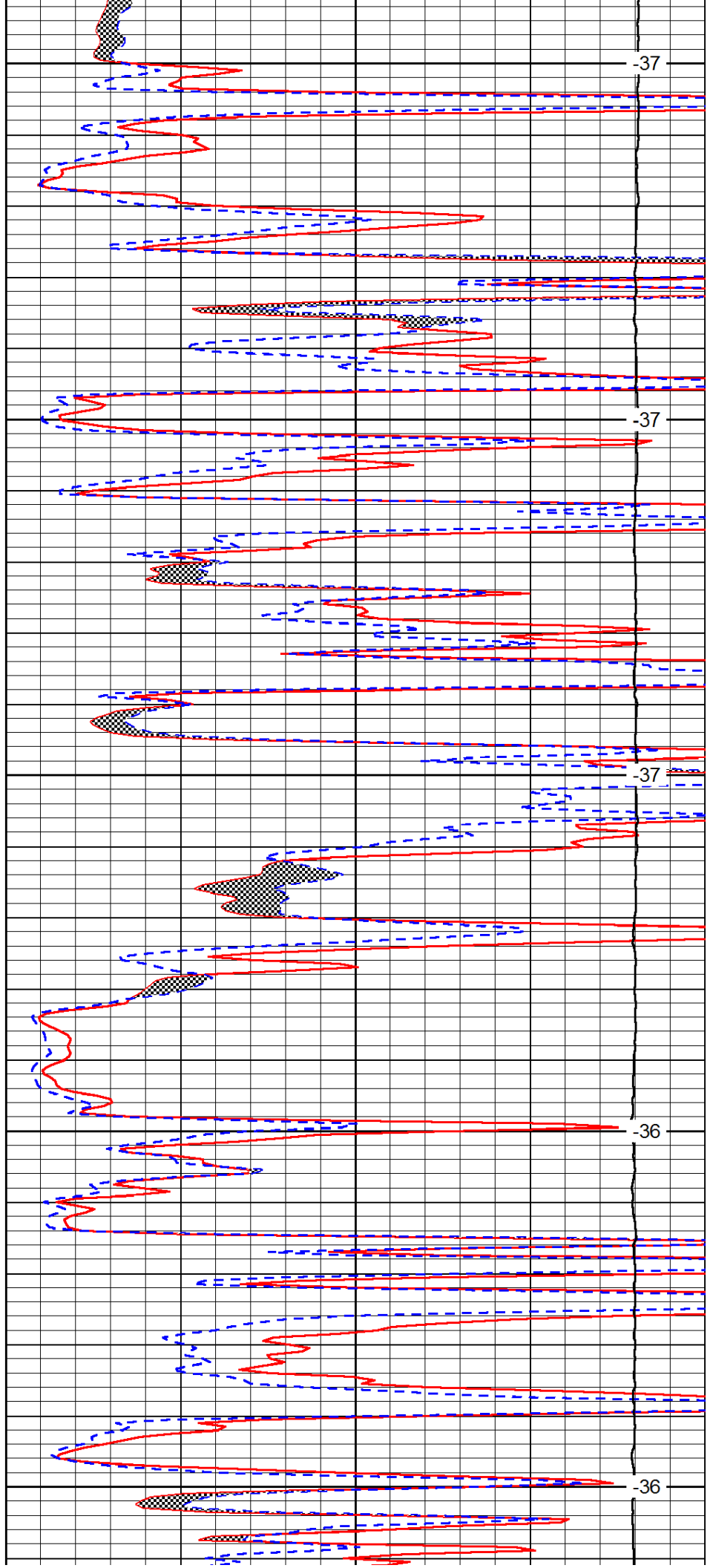
3150

3200

3250

3300

3350



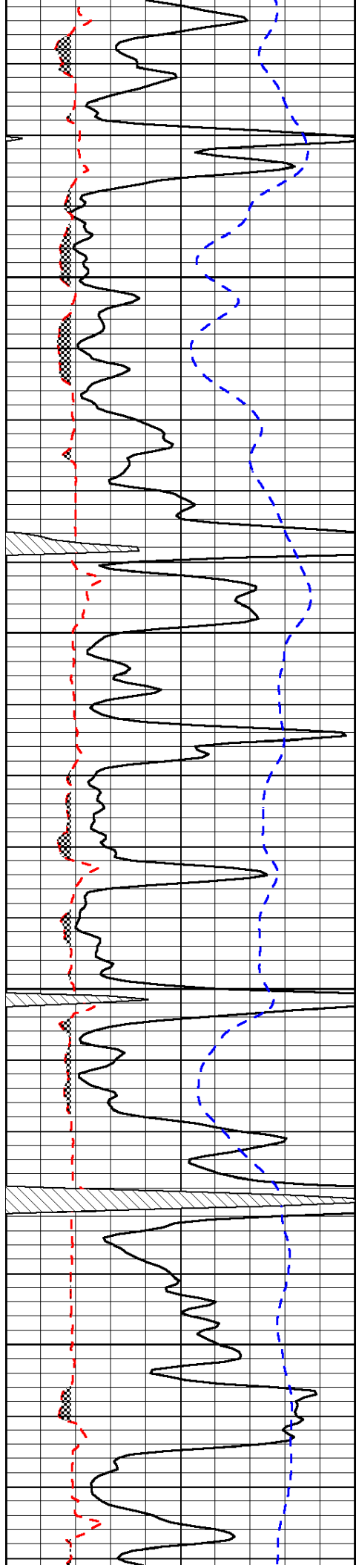
-37

-37

-37

-36

-36

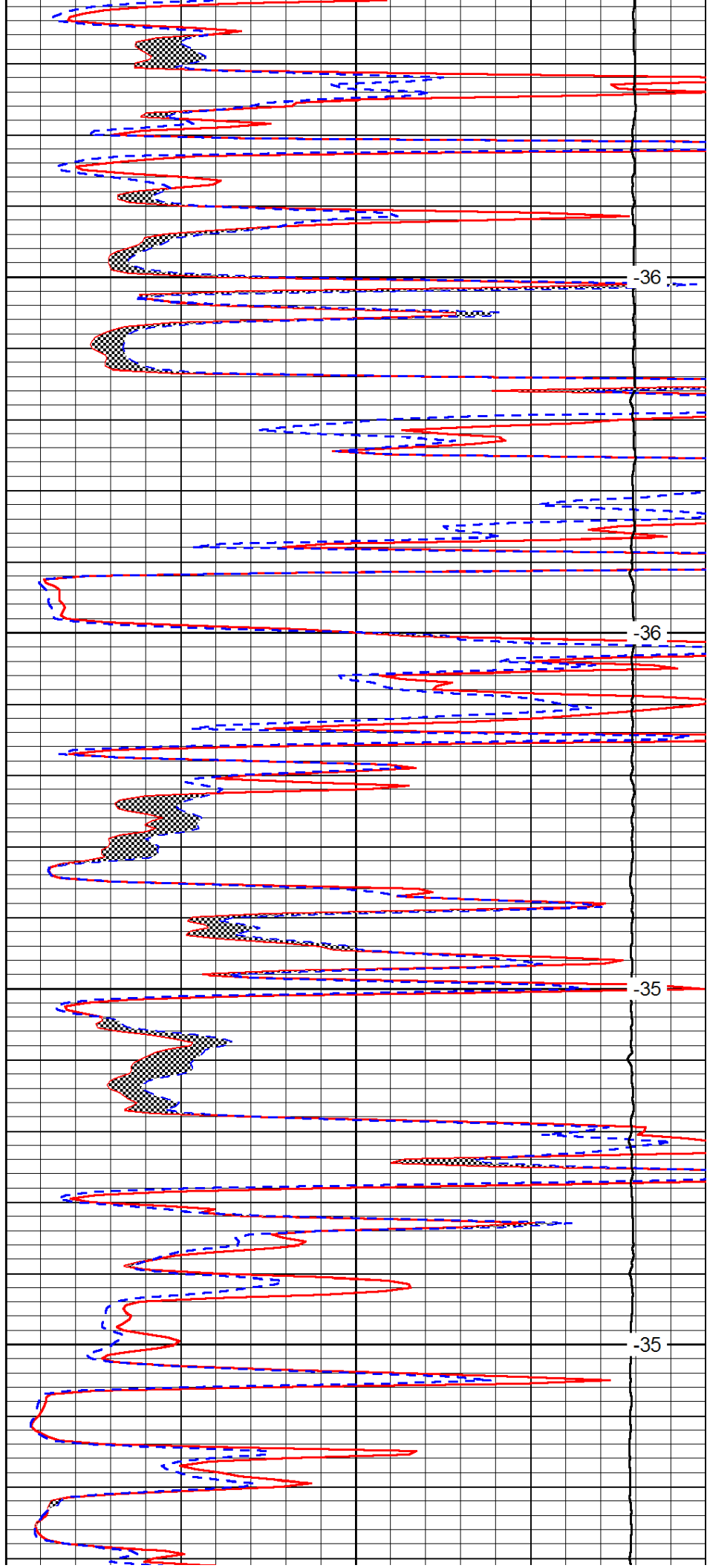


3400

3450

3500

3550

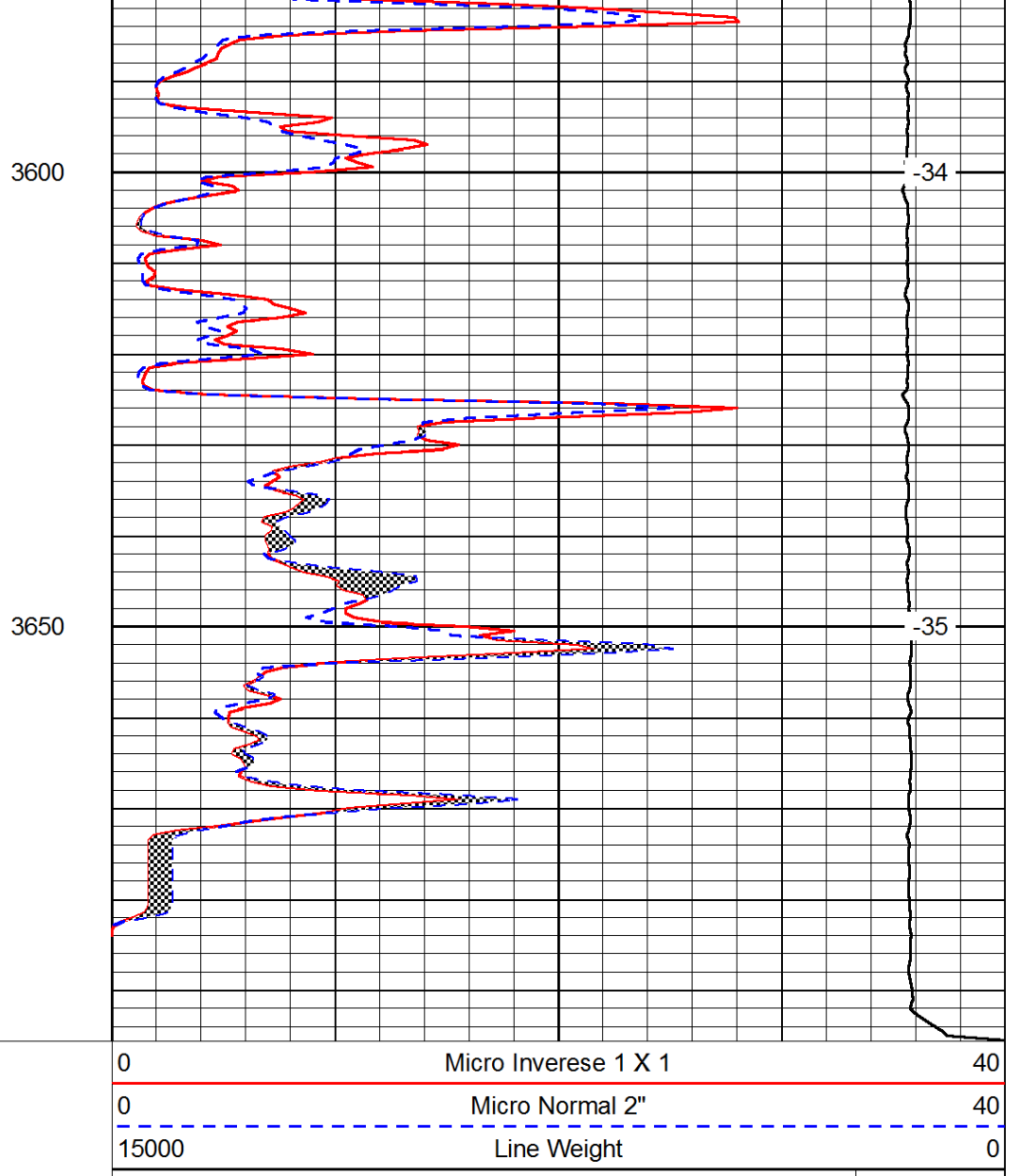
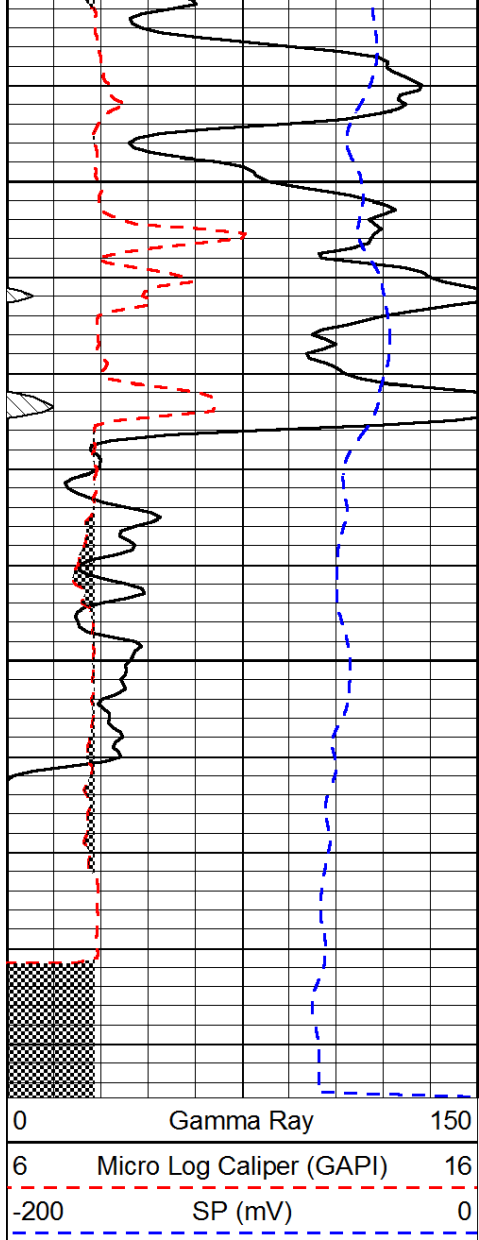


-36

-36

-35

-35



LSPD