



Pioneer Energy Services

Dual Compensated Porosity Log

15-163-24,187-00-00

API No.

Company **TDI, Inc.**

Well **Bice #1**

Field

County **Rooks**

State **Kansas**

Location

**E2 NE NW SE
2,310' FSL & 1,465' FEL**

Other Services
DIL
MEL

Sec: **22** Twp: **10S** Rge: **17W**

Permanent Datum **Ground Level** Elevation **2030**
Log Measured From **Kelly Bushing** **10 Ft. Above Perm. Datum**
Drilling Measured From **Kelly Bushing**

Elevation
K.B. **2040**
D.F.
G.L. **2030**

Date **4/20/2014**

Run Number **One**

Type Log **CNL / CDL**

Depth Driller **3750**

Depth Logger **3747**

Bottom Logged Interval **3726**

Top Logged Interval **2900**

Type Fluid In Hole **Chemical**

Salinity, PPM CL **3100**

Density **9.1**

Level **Full**

Max. Rec. Temp. F **114**

Operating Rig Time **4 Hours**

Equipment -- Location **108 Hays**

Recorded By **J. Long**

Witnessed By **Tom Denning**

Borehole Record

Run No.	Bit	From	To	Size	Wgt.	From	To
1	12.25	00	223	8.625	24#	00	223
2	7.875	223	3750				

Casing Record

Run No.	Bit	From	To	Size	Wgt.	From	To

<<< Fold Here >>>

All interpretations are opinions based on inferences from electrical or other measurements and we cannot and do not guarantee the accuracy or correctness of any interpretation, and we shall not, except in the case of gross or willful negligence on our part, be liable or responsible for any loss, costs, damages, or expenses incurred or sustained by anyone resulting from any interpretation made by any of our officers, agents or employees. These interpretations are also subject to our general terms and conditions set out in our current Price Schedule.

Comments

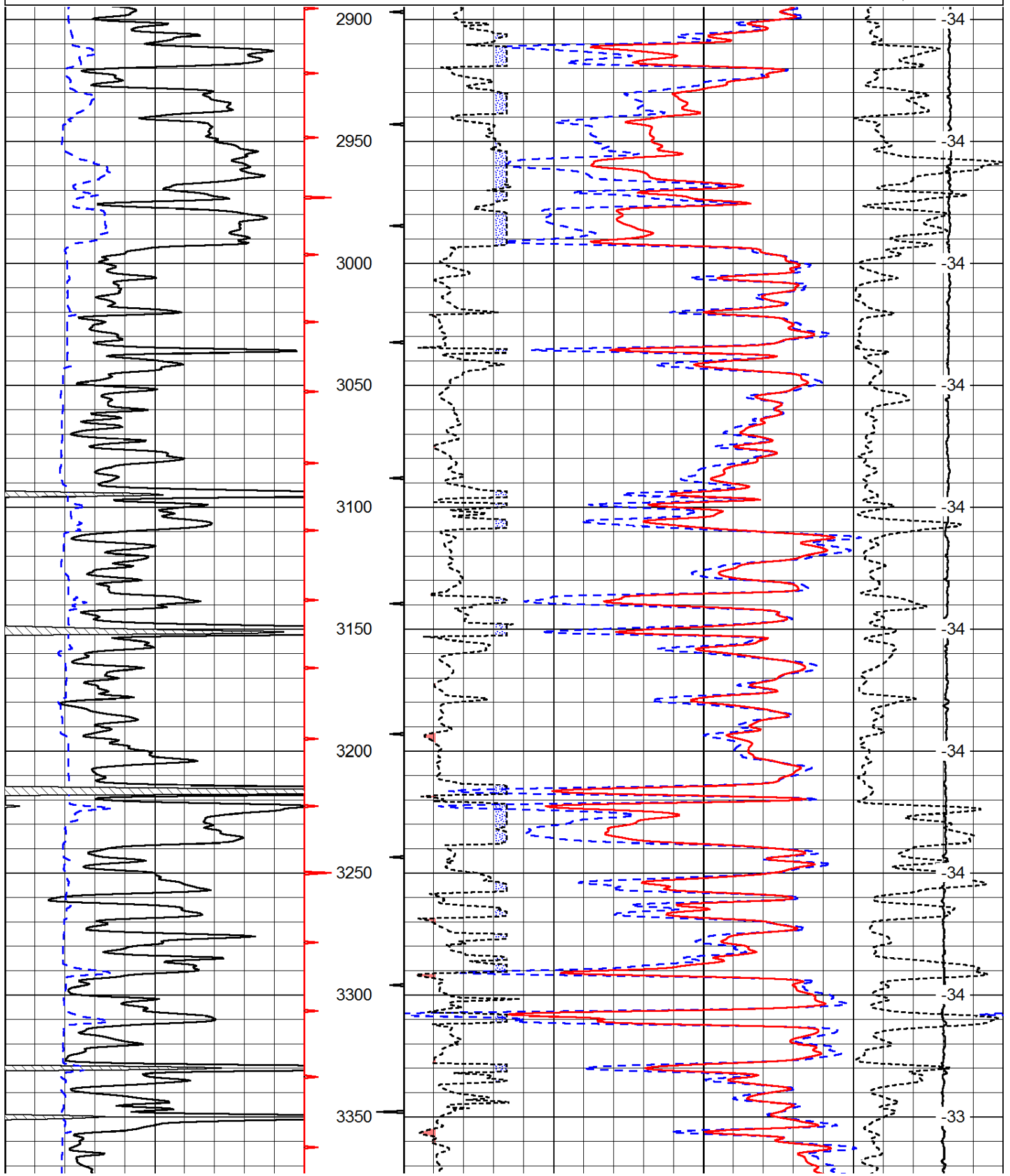
Thank you for using Pioneer Energy Services
www.pioneerenergy.com
785 625 3858

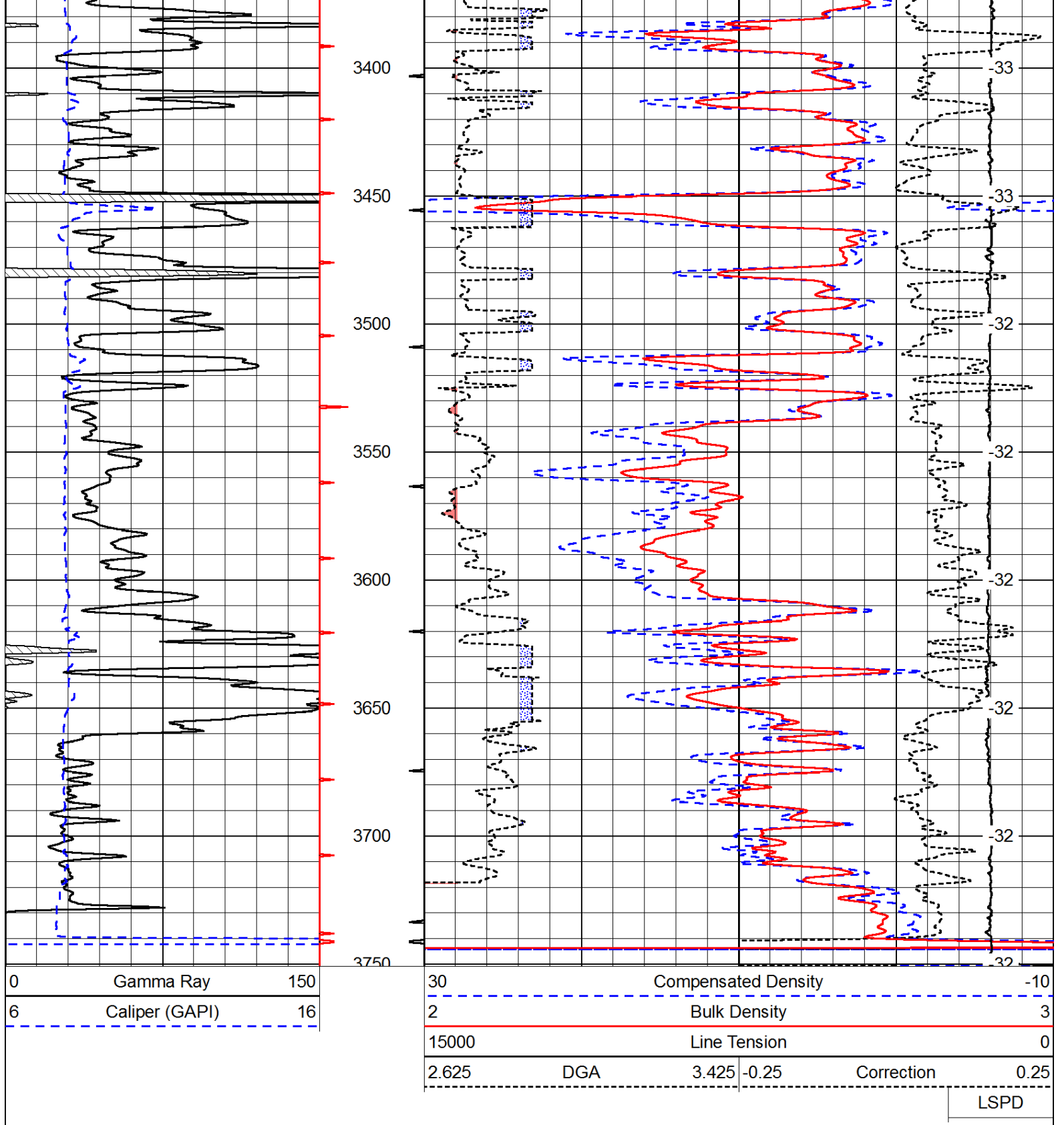
Hays, North to BB Road, 5 1/2 East to Dead End, 1/2 South, West Into

Database File: c:\warrior\data\tdi_bice #1\tdi_bice_1hd.db
 Dataset Pathname: dil/tdistck
 Presentation Format: cdl
 Dataset Creation: Sun Apr 20 00:12:01 2014
 Charted by: Depth in Feet scaled 1:600

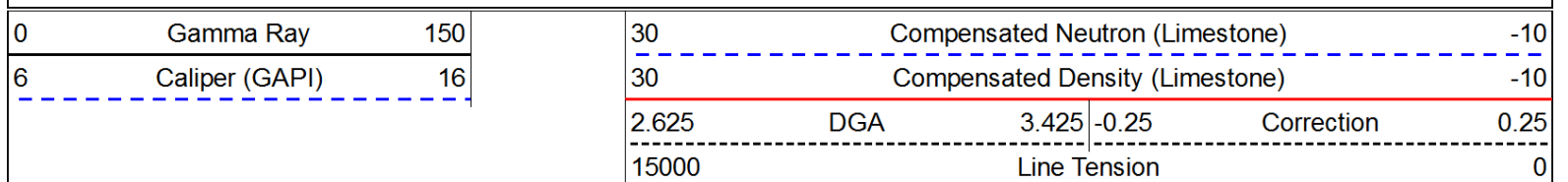
0	Gamma Ray	150
6	Caliper (GAPI)	16

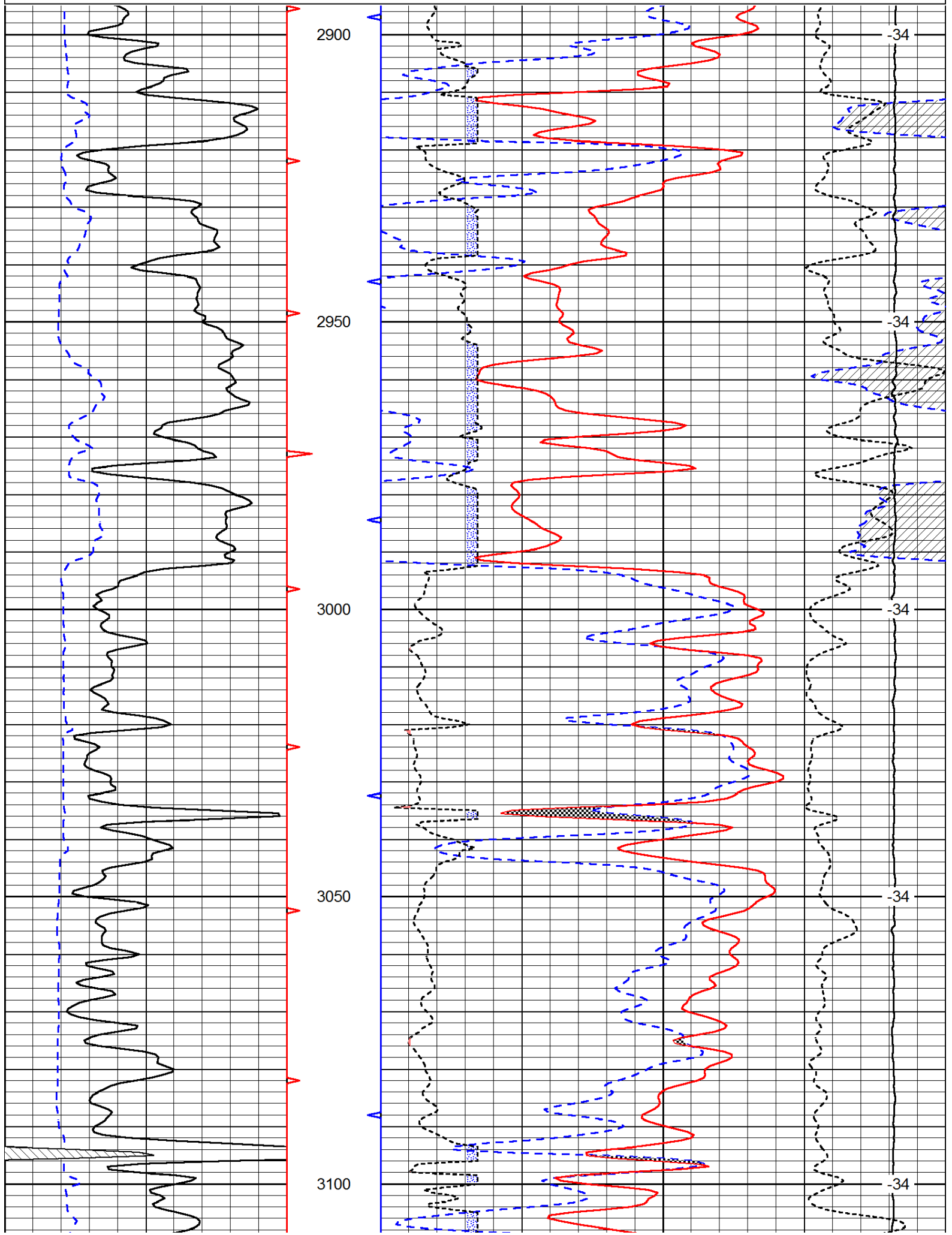
30	Compensated Density		-10
2	Bulk Density		3
15000	Line Tension		0
2.625	DGA	3.425	-0.25
Correction			0.25
LSPD			

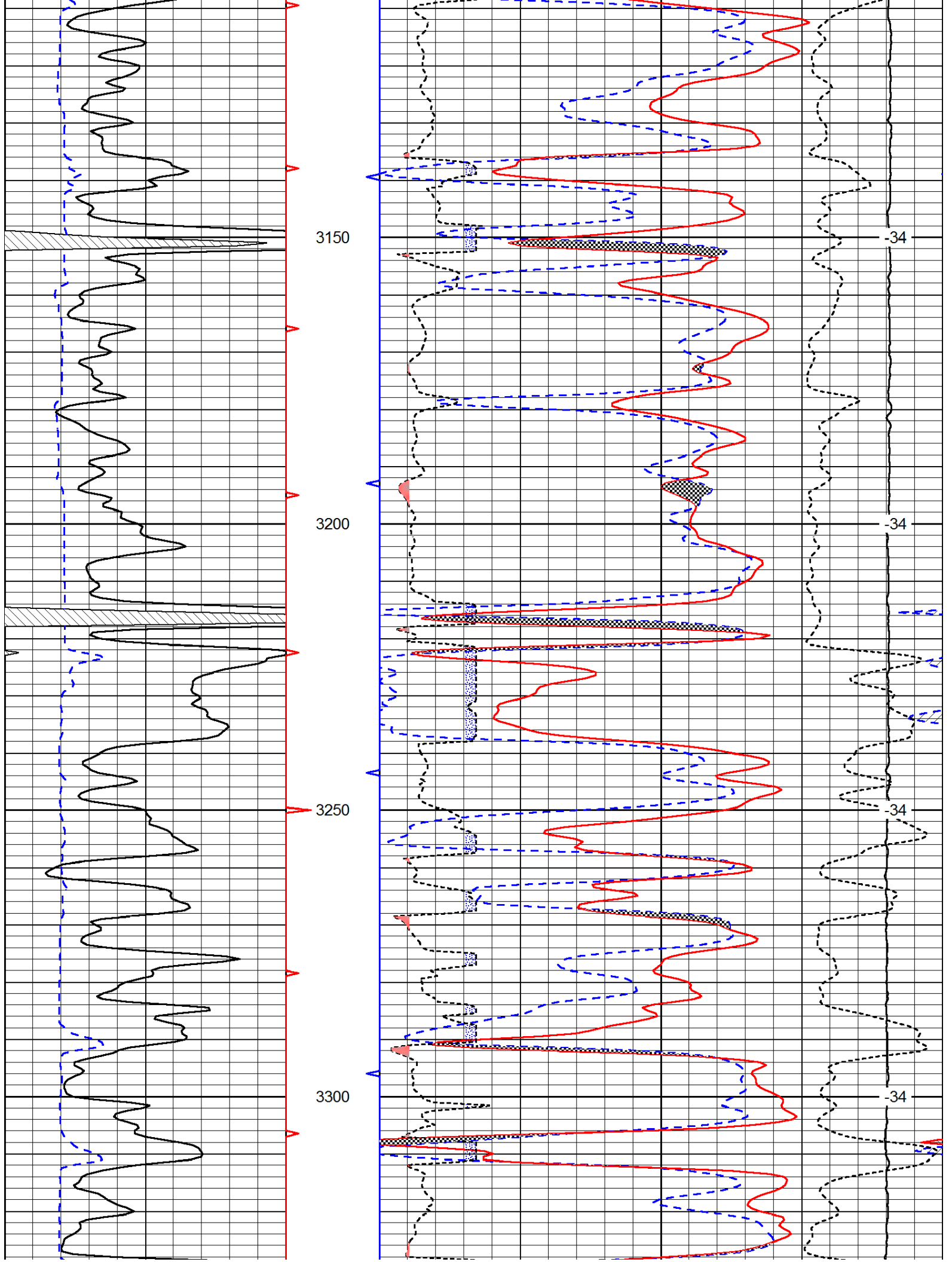


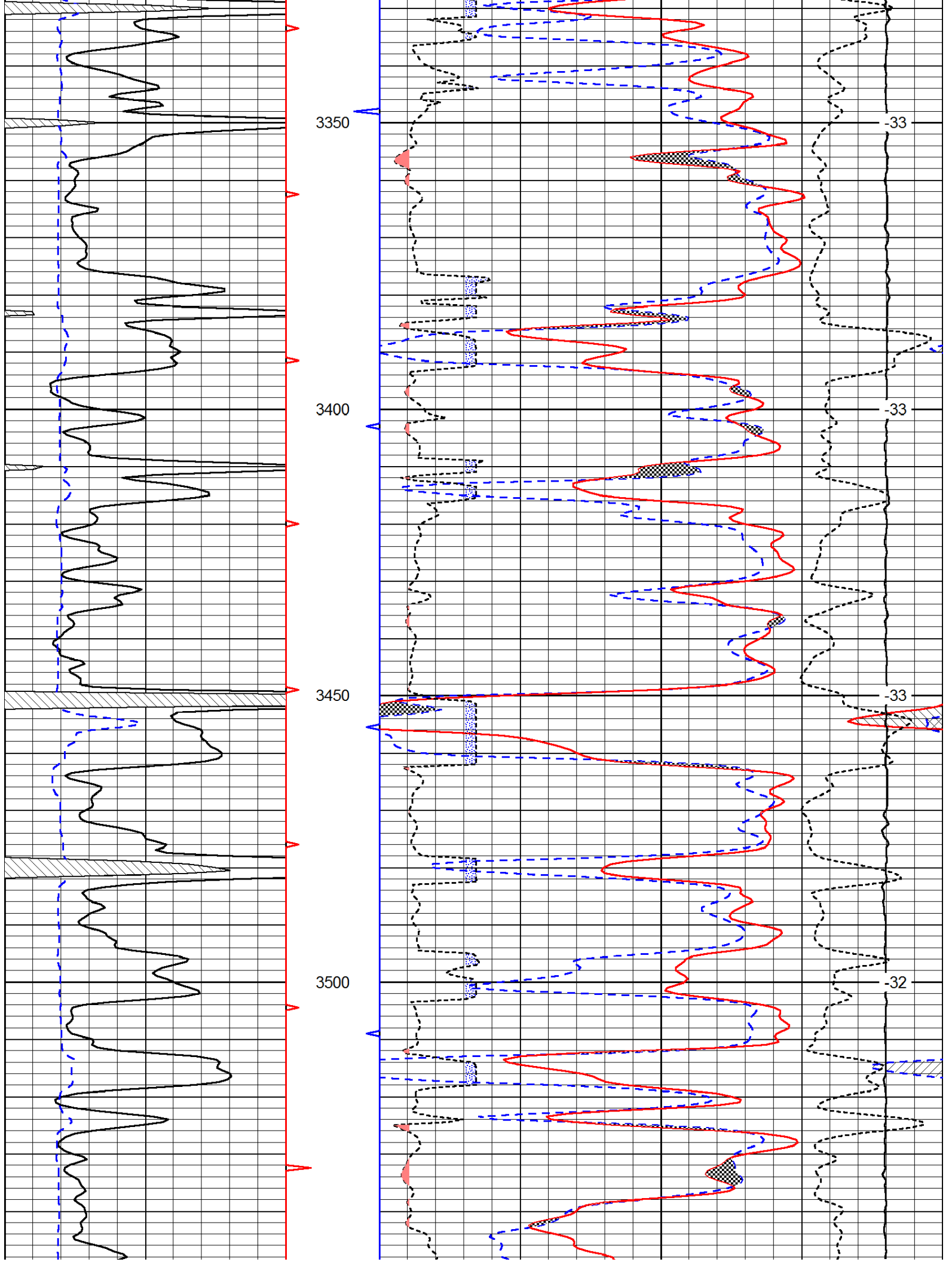


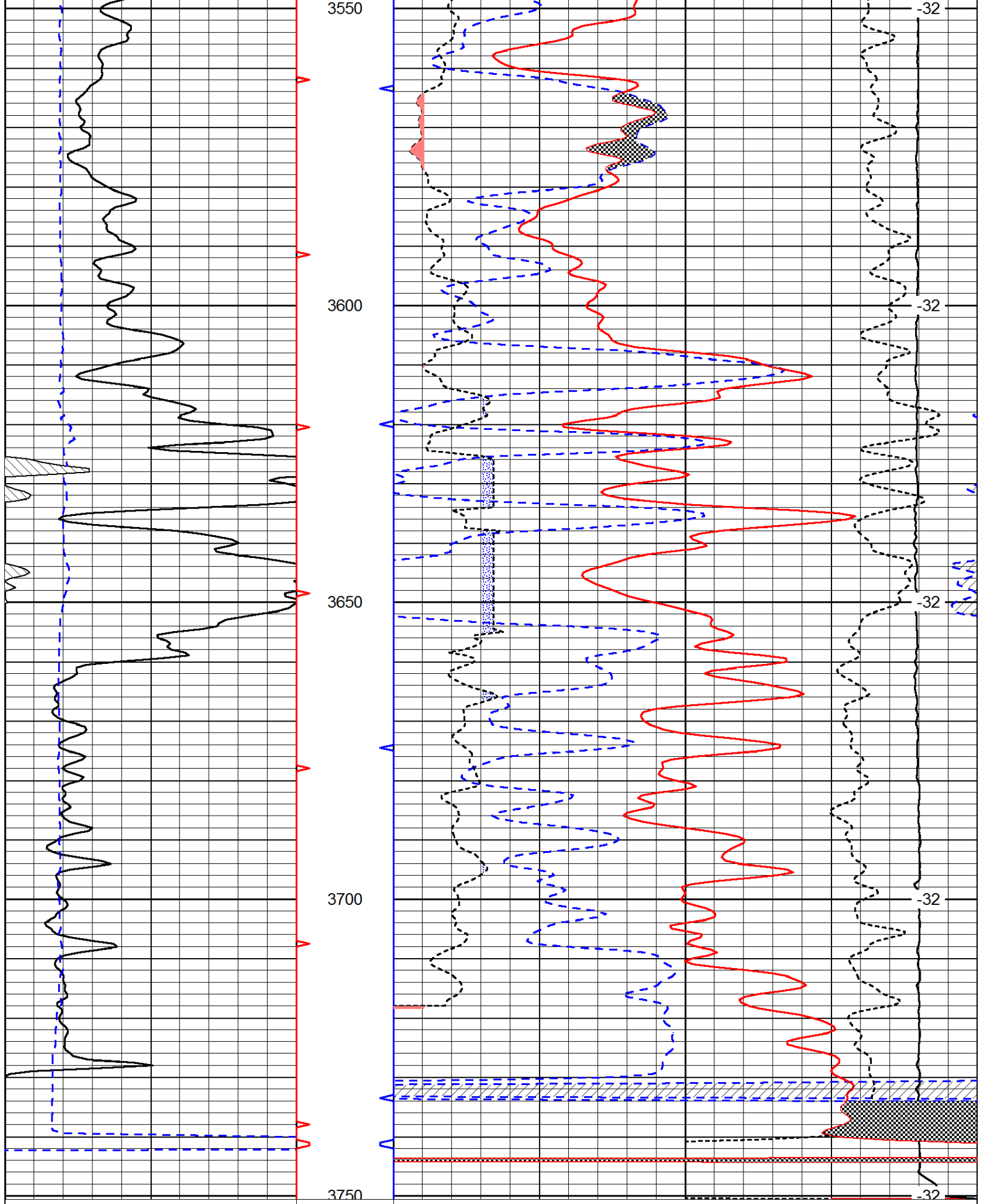
Database File: c:\warrior\data\tdi_bice #1\tdi_bice_1hd.db
 Dataset Pathname: dil/tdistck
 Presentation Format: cndlspec
 Dataset Creation: Sun Apr 20 00:12:01 2014
 Charted by: Depth in Feet scaled 1:240











0	Gamma Ray	150
6	Caliper (GAPI)	16

30	Compensated Neutron (Limestone)	-10
30	Compensated Density (Limestone)	-10

2.625	DGA	3.425	-0.25	Correction	0.25
15000	Line Tension		0		

