



Pioneer Energy Services

# Microresistivity Log

15-163-24,187-00-00

API No.

Company **TDI, Inc.**

Well **Bice #1**

Field

County **Rooks**

State

**Kansas**

Location

**E2 NE NW SE  
2,310' FSL & 1,465' FEL**

Sec: **22**

Twp: **10S**

Rge: **17W**

Elevation

**K.B. 2040  
D.F. 2030  
G.L. 2030**

Permanent Datum **Ground Level**

**Kelly Bushing**

**10 Ft. Above Perm. Datum**

Drilling Measured From **Kelly Bushing**

Date **4/20/2014**

Run Number

**Two**

Depth Driller

**3750**

Depth Logger

**3747**

Bottom Logged Interval

**3746**

Top Log Interval

**2900**

Casing Driller

**8.625 @ 223**

Casing Logger

**222**

Bit Size

**7.875**

Type Fluid in Hole

**Chemical**

Salinity, ppm CL

**3100**

Density / Viscosity

**9.1 54**

pH / Fluid Loss

**11.0 6.0**

Source of Sample

**Flowline**

Rm @ Meas. Temp

**.50 @ 70**

Rmf @ Meas. Temp

**.38 @ 70**

Rmc @ Meas. Temp

**.68 @ 70**

Source of Rmf / Rmc

**Charts**

Rm @ BHT

**.31 @ 114**

Operating Rig Time

**4 Hours**

Max Rec. Temp. F

**114**

Equipment Number

**108**

Location

**Hays**

Recorded By

**J. Long**

Witnessed By

**Tom Denning**

Herb Deines

<<< Fold Here >>>

All interpretations are opinions based on inferences from electrical or other measurements and we cannot and do not guarantee the accuracy or correctness of any interpretation, and we shall not, except in the case of gross or willful negligence on our part, be liable or responsible for any loss, costs, damages, or expenses incurred or sustained by anyone resulting from any interpretation made by any of our officers, agents or employees. These interpretations are also subject to our general terms and conditions set out in our current Price Schedule.

## Comments

Thank you for using Pioneer Energy Services  
[www.pioneerenergy.com](http://www.pioneerenergy.com)  
 785 625 3858

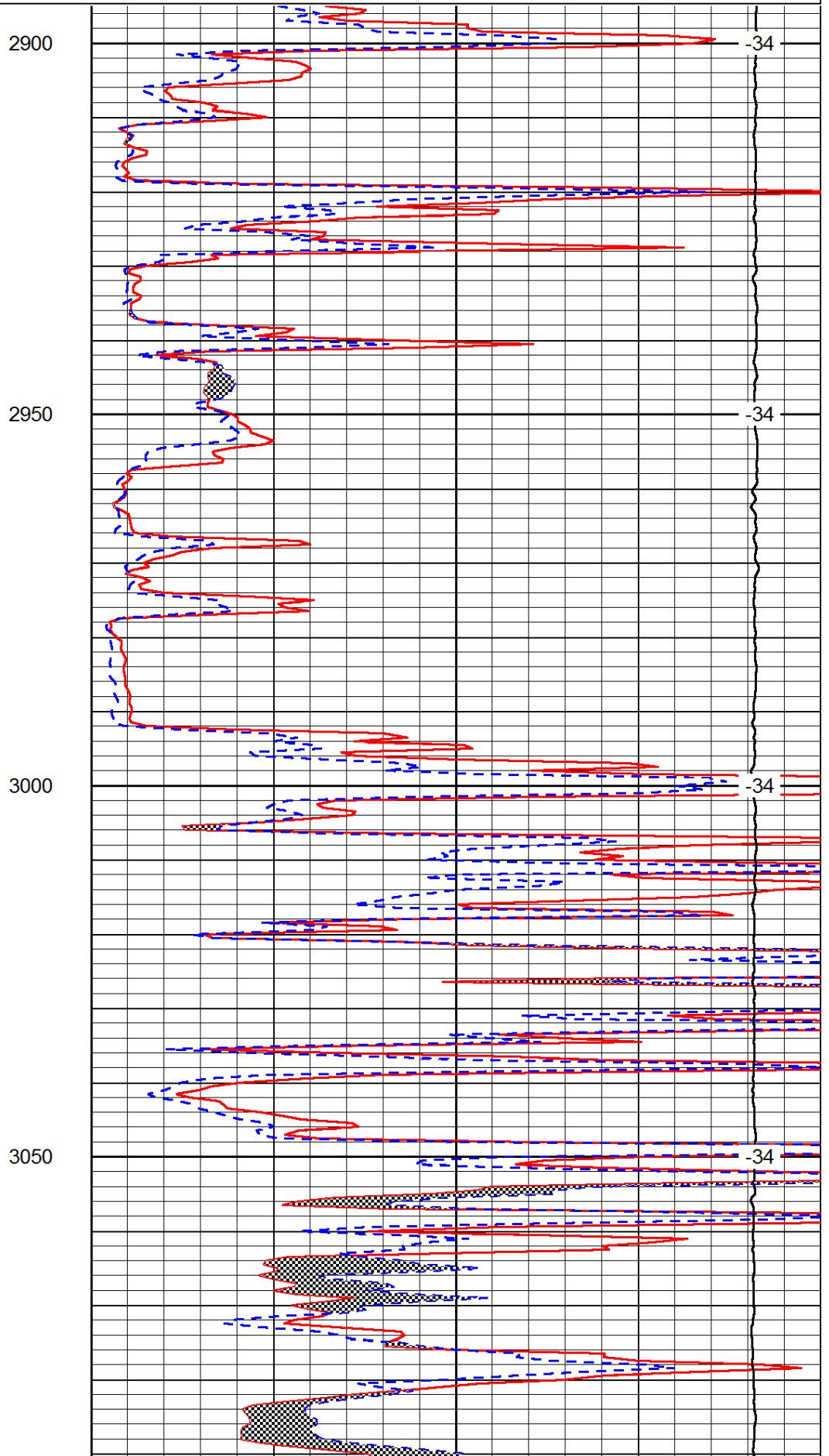
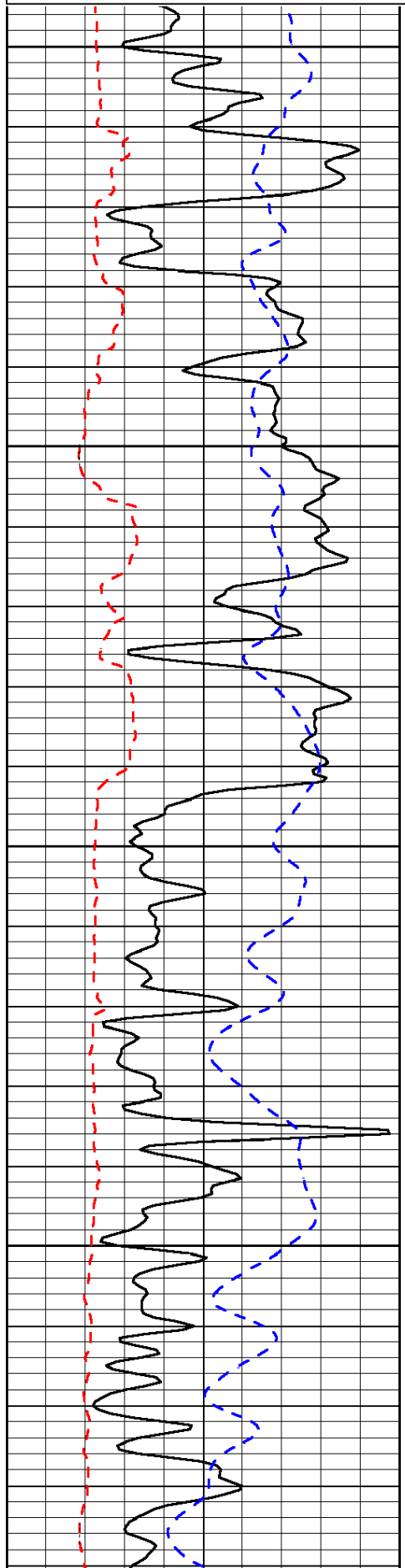
Hays, North to BB Road, 5 1/2 East to Dead End, 1/2 South, West Into

Database File: c:\warrior\data\tdi\_bice #1\tdi\_bice\_1hd.db  
 Dataset Pathname: dil\tdistck  
 Presentation Format: micro  
 Dataset Creation: Sun Apr 20 00:12:01 2014  
 Charted by: Depth in Feet scaled 1:240

0	Gamma Ray	150
6	Micro Log Caliper (GAPI)	16
-200	SP (mV)	0

0	Micro Inverse 1 X 1	40
0	Micro Normal 2"	40
15000	Line Weight	0

LSPD



2900

-34

2950

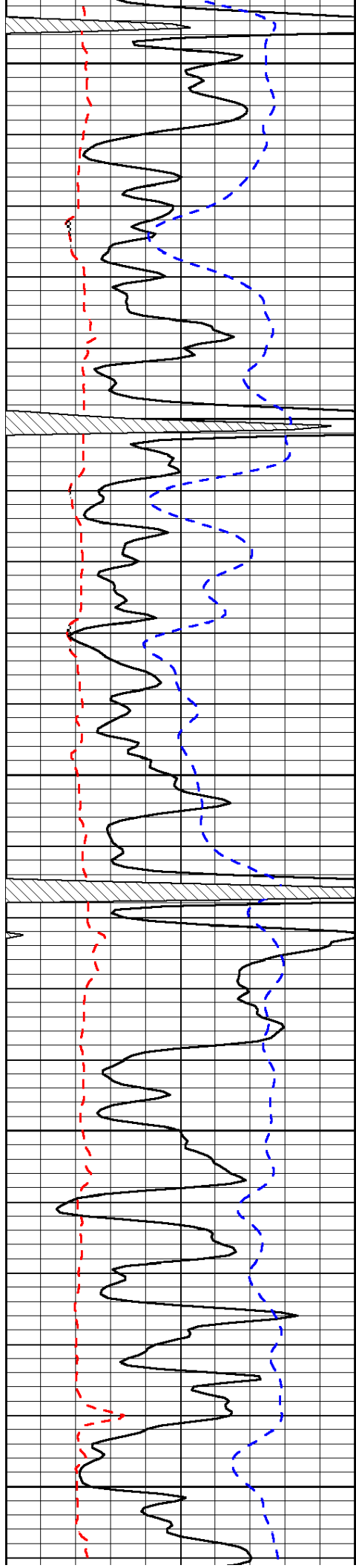
-34

3000

-34

3050

-34



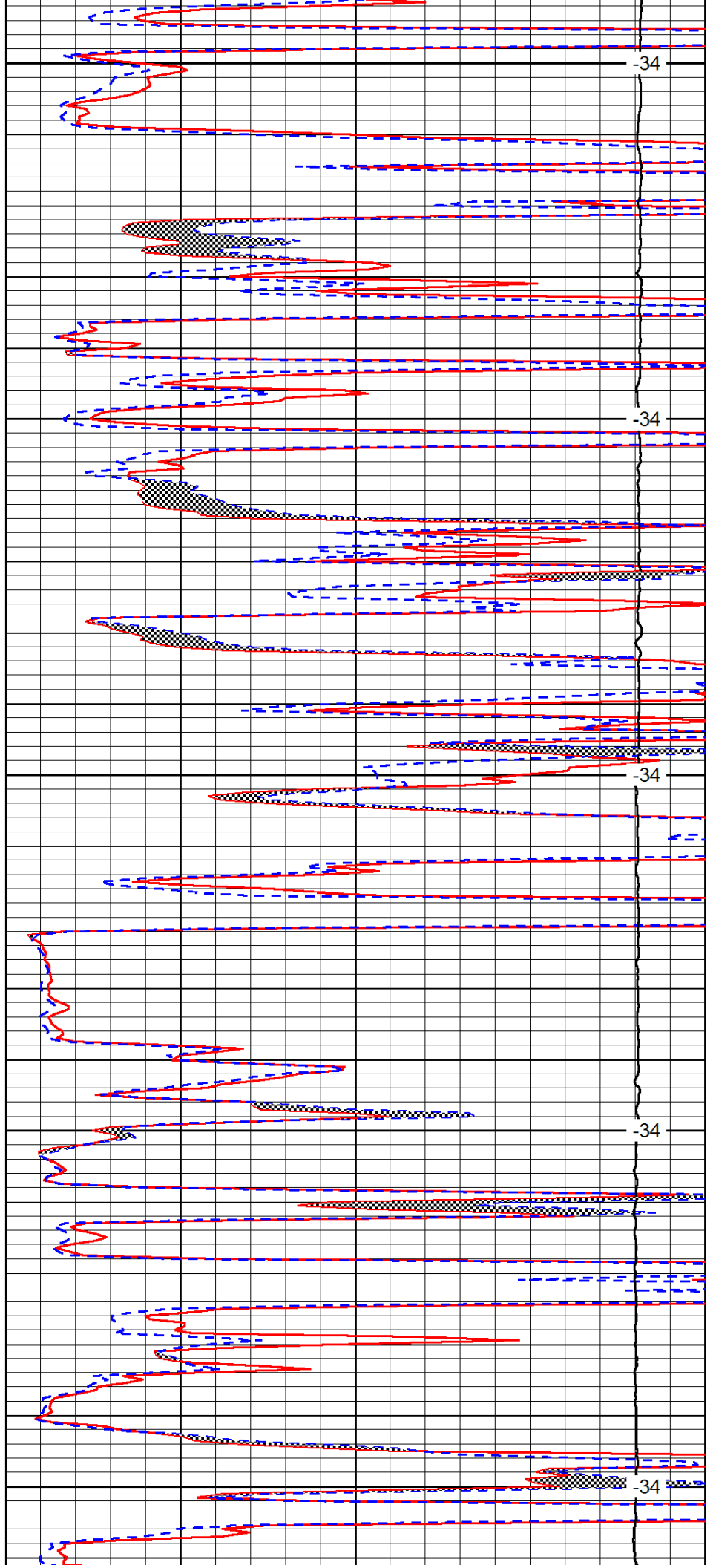
3100

3150

3200

3250

3300



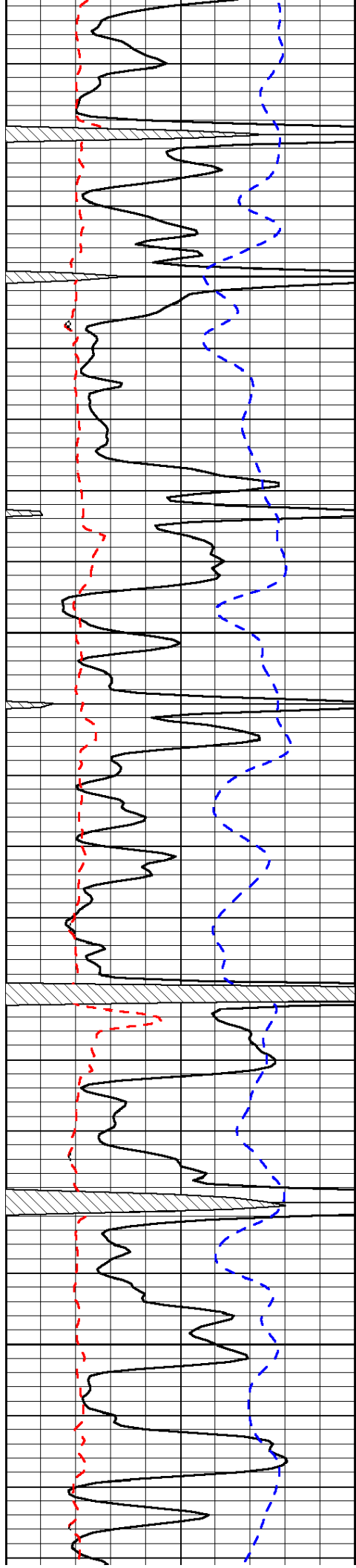
-34

-34

-34

-34

-34

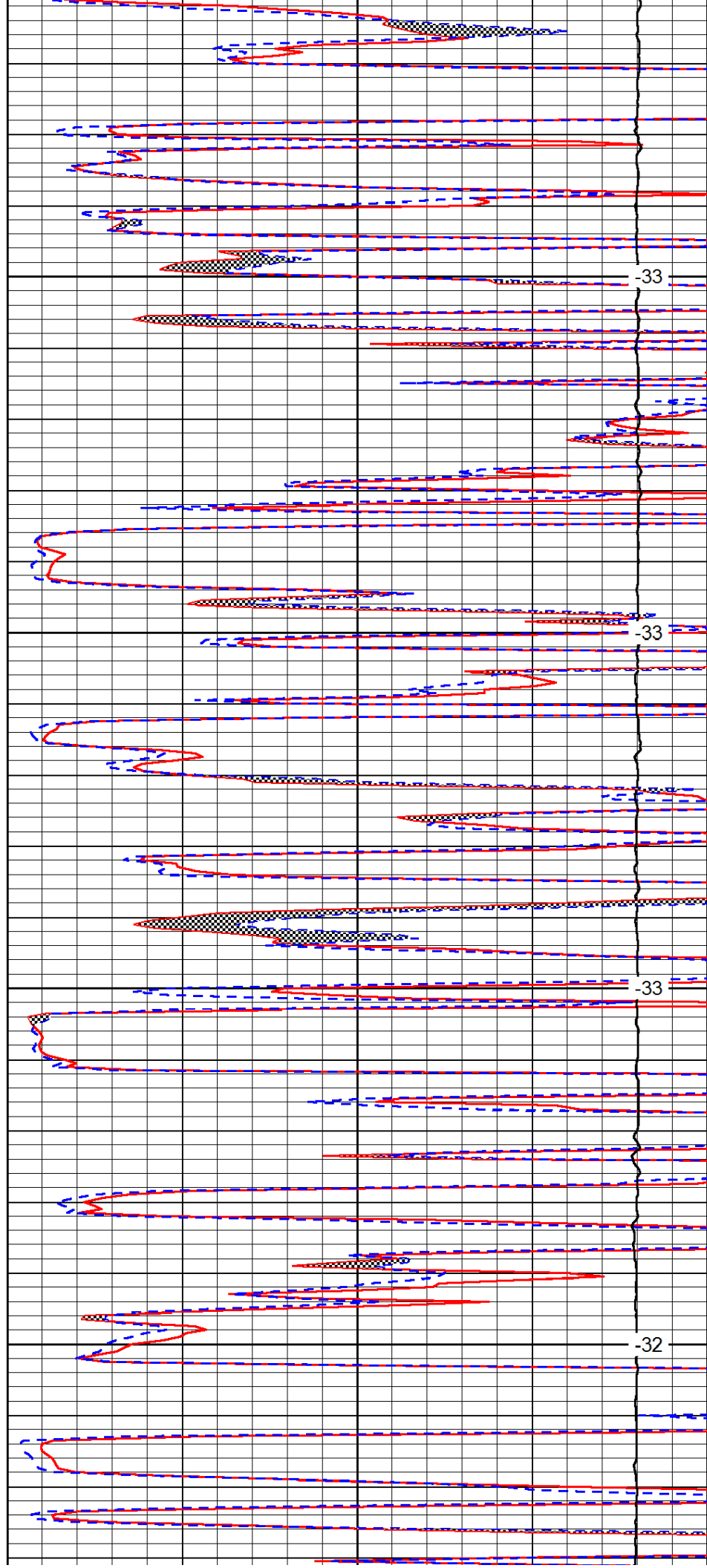


3350

3400

3450

3500

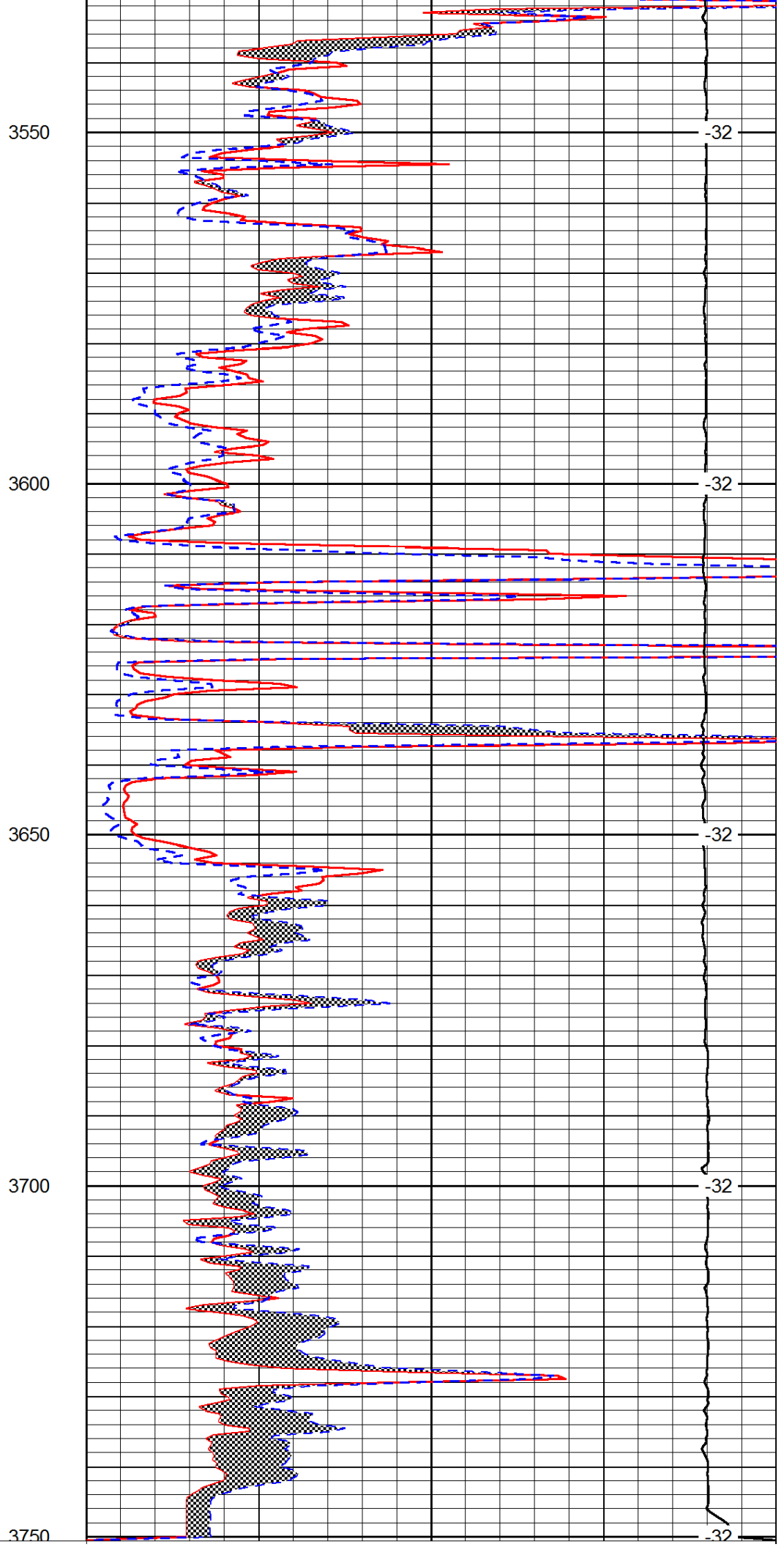
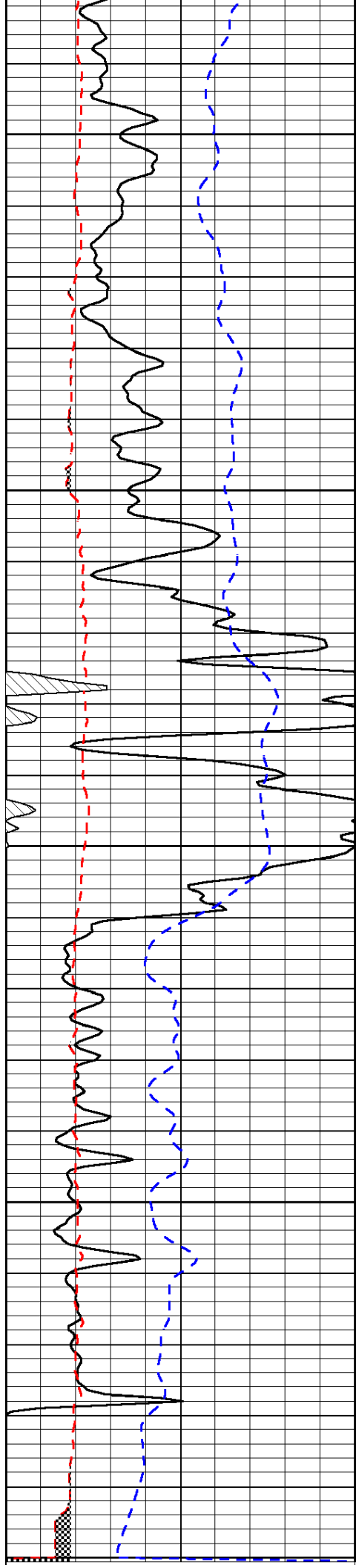


-33

-33

-33

-32



0	Gamma Ray	150
6	Micro Log Caliper (GAPI)	16
-200	SP (mV)	0

0	Micro Inverse 1 X 1	40
0	Micro Normal 2"	40
15000	Line Weight	0

LSPD