



Pioneer Energy Services

Borehole Compensated Sonic Log

Company Murfin Drilling Company, Inc.
Well Loker Trust # 1-1
Field Wildcat
County Rawlins **State** Kansas
Location 1320' FSL & 1980' FWL
 Sec: 1 Twp: 3 S Rge: 36 W
 Other Services: CNL/CDL MEL/DIL

API No. 15-153-20992-00-00
 Permanent Datum Ground Level Elevation 3249
 Log Measured From Kelly Bushing 5 Ft. Above Perm. Datum
 Drilling Measured From Kelly Bushing
 Date 03-13-2014
 Elevation K.B. 3254
 D.F. 3249
 G.L. 3249

Run Number	Two
Type Log	BHC Sonic
Depth Driller	4890
Depth Logger	4892
Bottom Logged Interval	4881
Top Logged Interval	350
Type Fluid In Hole	Chemical
Salinity, PPM CL	700
Density	9.4
Level	Full
Max. Rec. Temp. F	127
Operating Rig Time	5 1/2 Hours
Equipment -- Location	91 Hays
Recorded By	Y. Ruiz
Witnessed By	Jeff Christian

Borehole Record				Casing Record			
Run No.	Bit	From	To	Size	Wgt.	From	To
One	12.25	00	350	8.625	23#	00	350
Two	7.875	350	TD				

<<< Fold Here >>>

All interpretations are opinions based on inferences from electrical or other measurements and we cannot and do not guarantee the accuracy or correctness of any interpretation, and we shall not, except in the case of gross or willful negligence on our part, be liable or responsible for any loss, costs, damages, or expenses incurred or sustained by anyone resulting from any interpretation made by any of our officers, agents or employees. These interpretations are also subject to our general terms and conditions set out in our current Price Schedule.

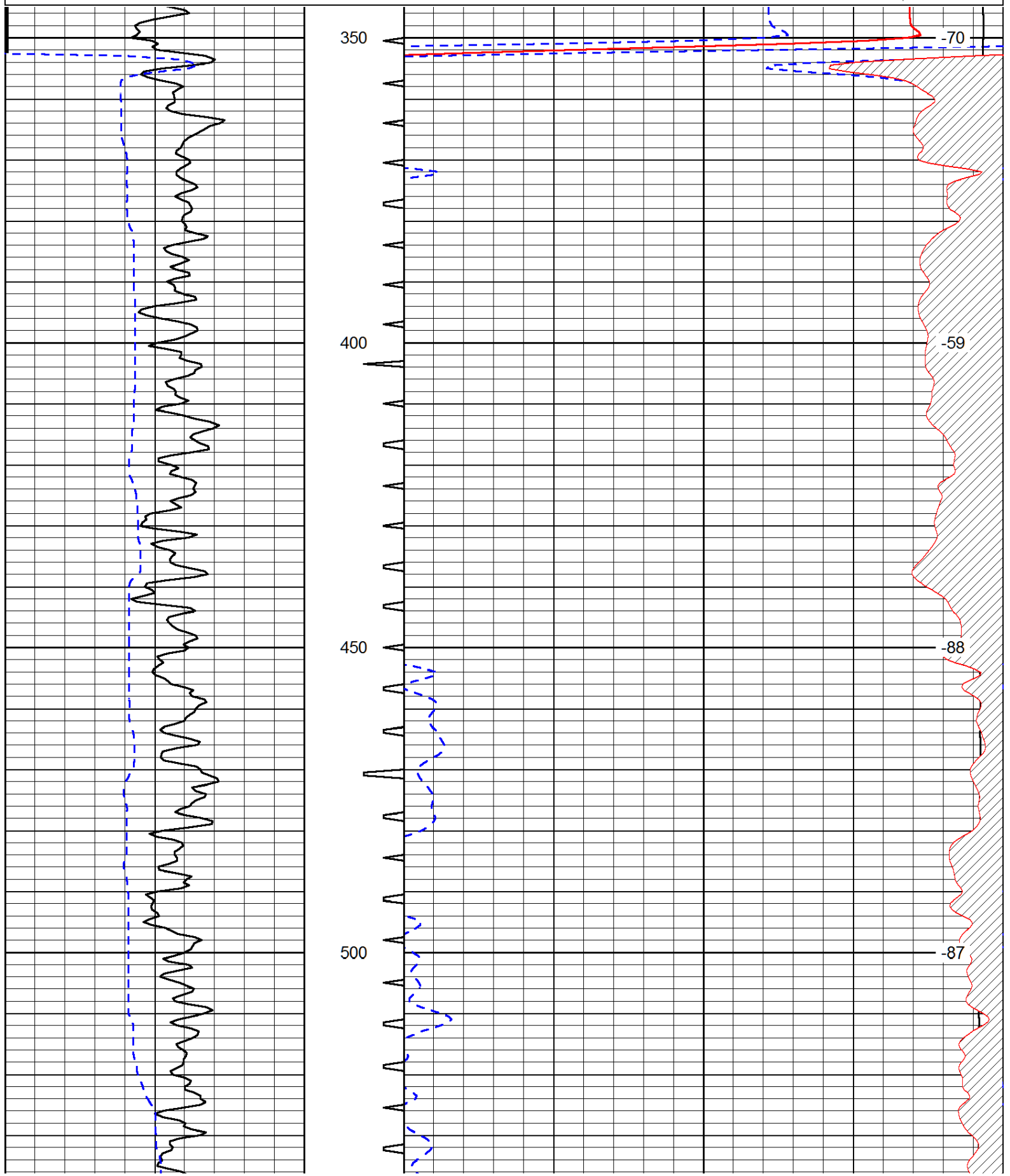
Comments

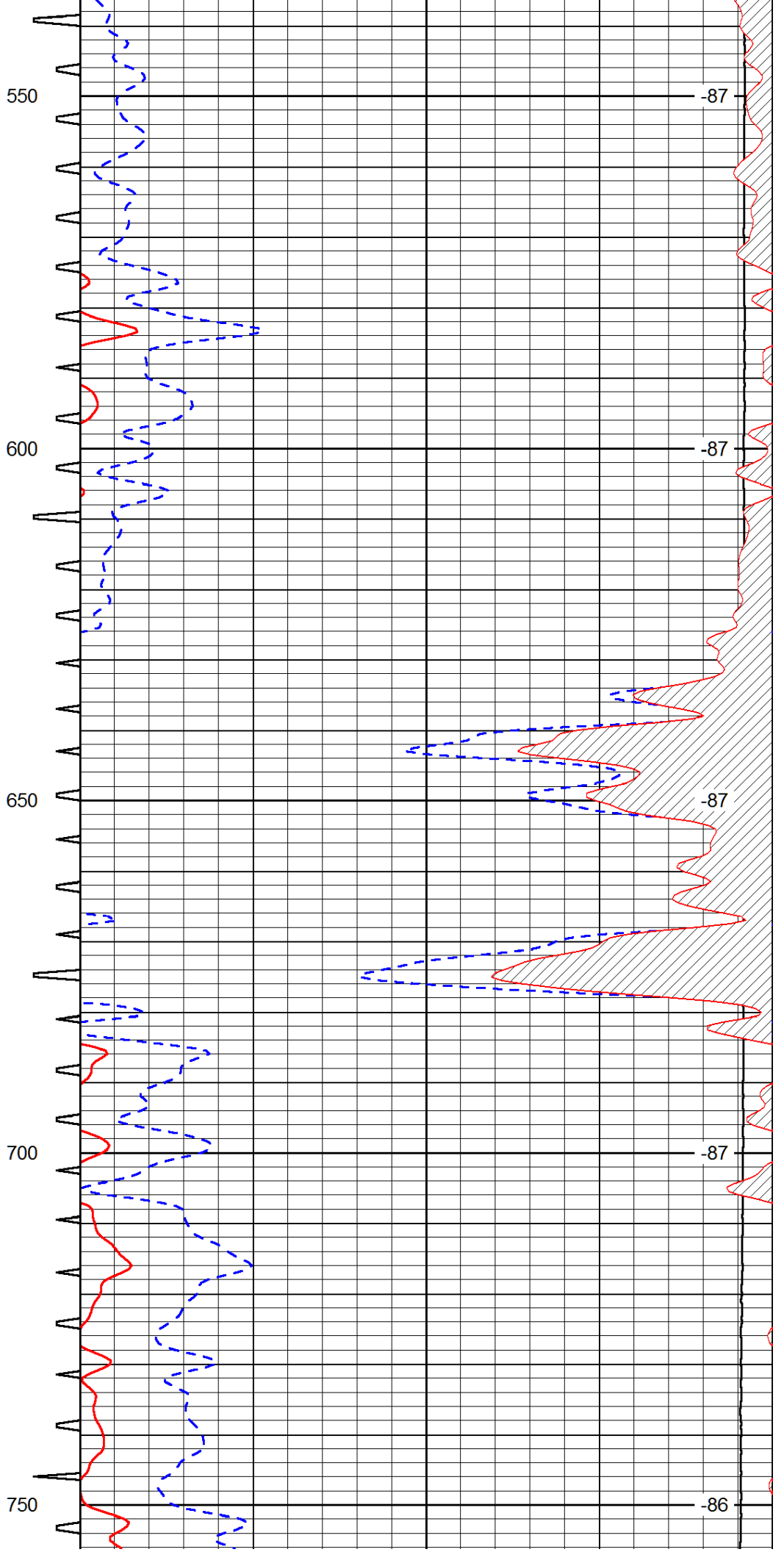
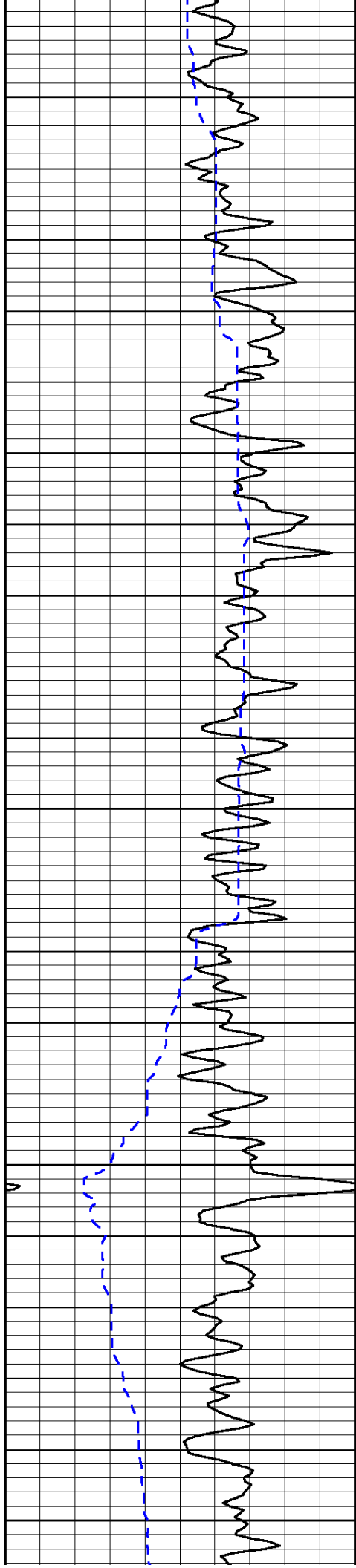
Thank you for using Log-Tech, Inc.
 (785) 625-3858

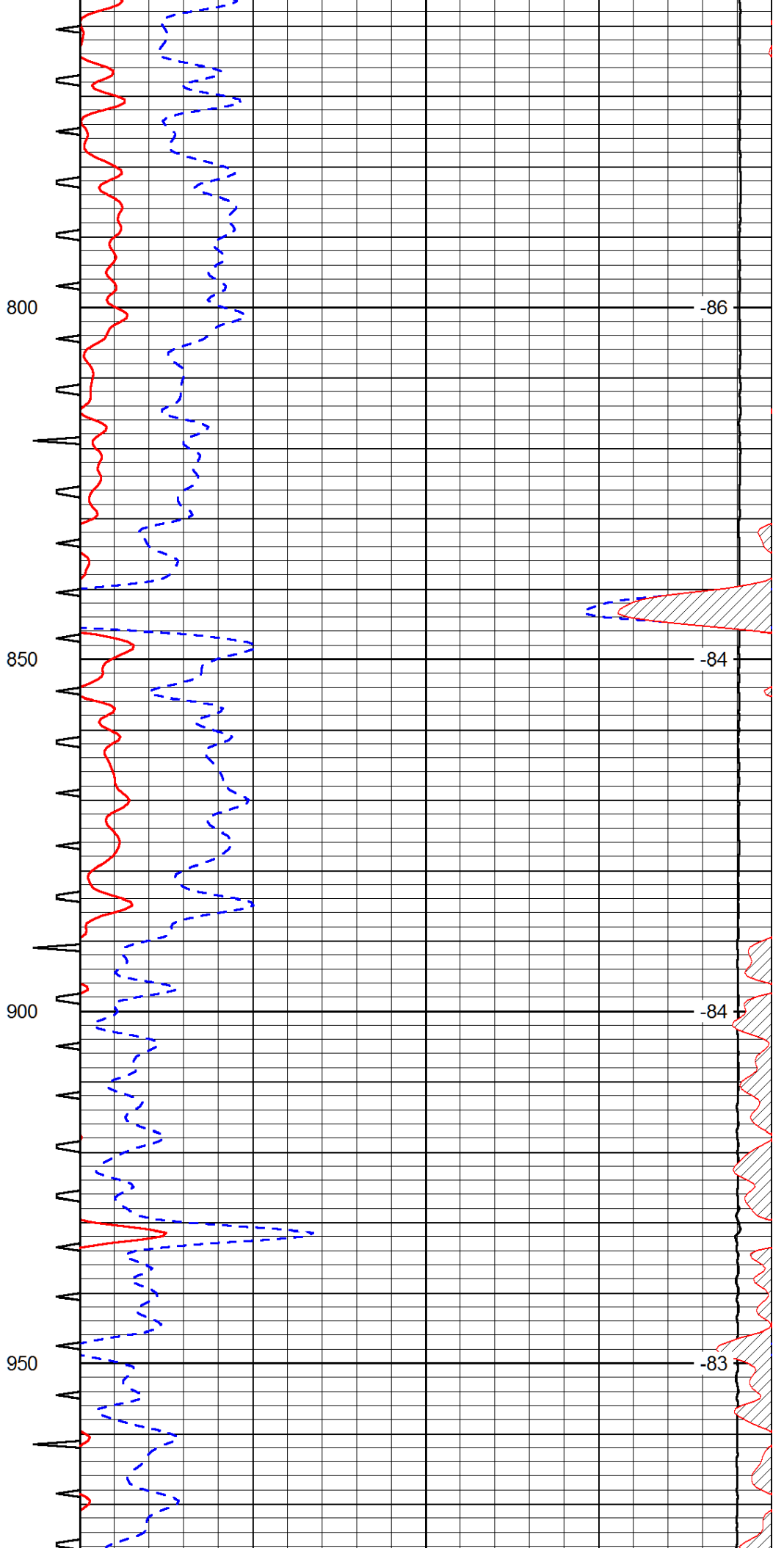
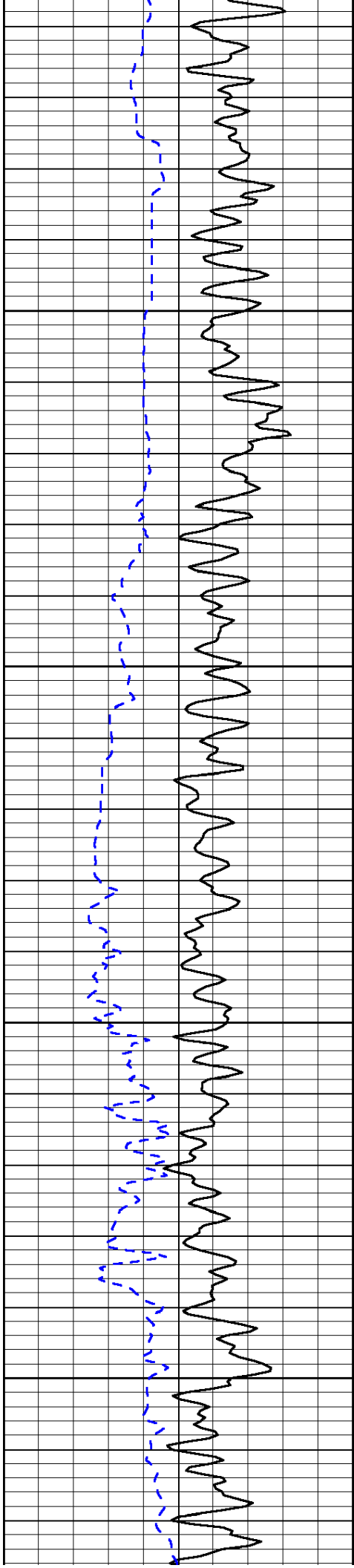
 Atwood,
 West to 7 Rd, 2 North to R Rd, 1/2 West,
 North into

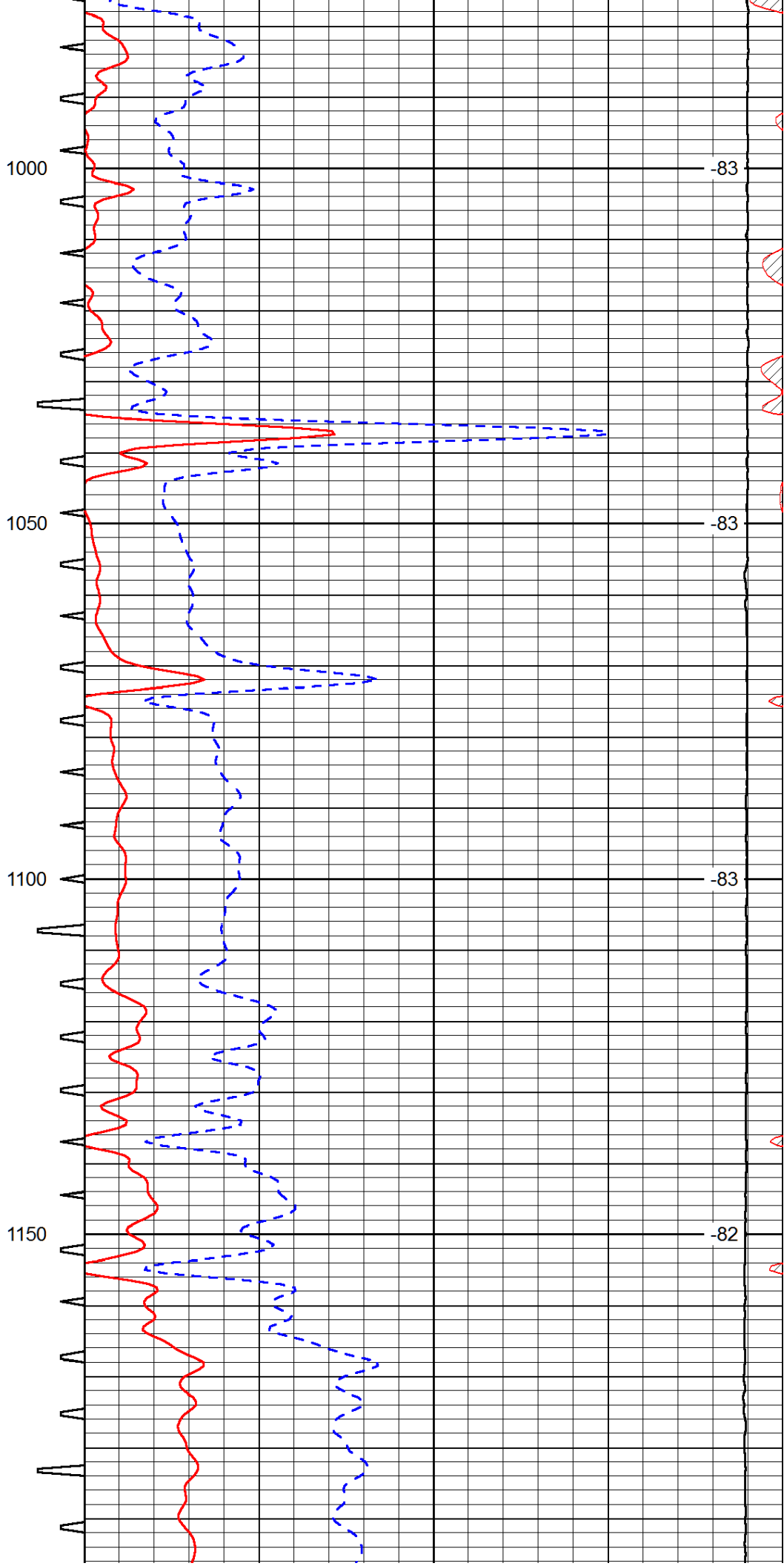
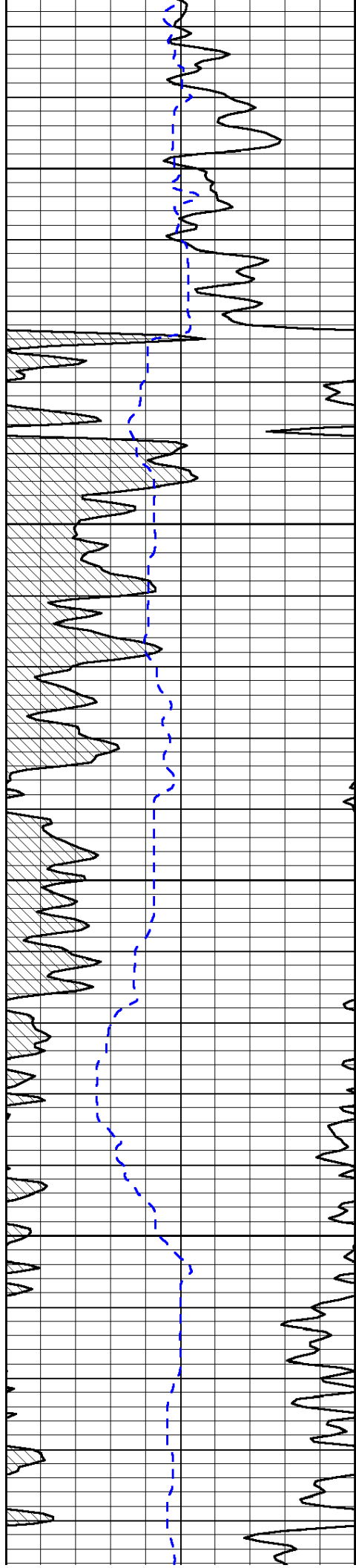
Database File: murfin_031314hd.db
 Dataset Pathname: DIL/murstk
 Presentation Format: sonic
 Dataset Creation: Thu Mar 13 12:39:12 2014
 Charted by: Depth in Feet scaled 1:240

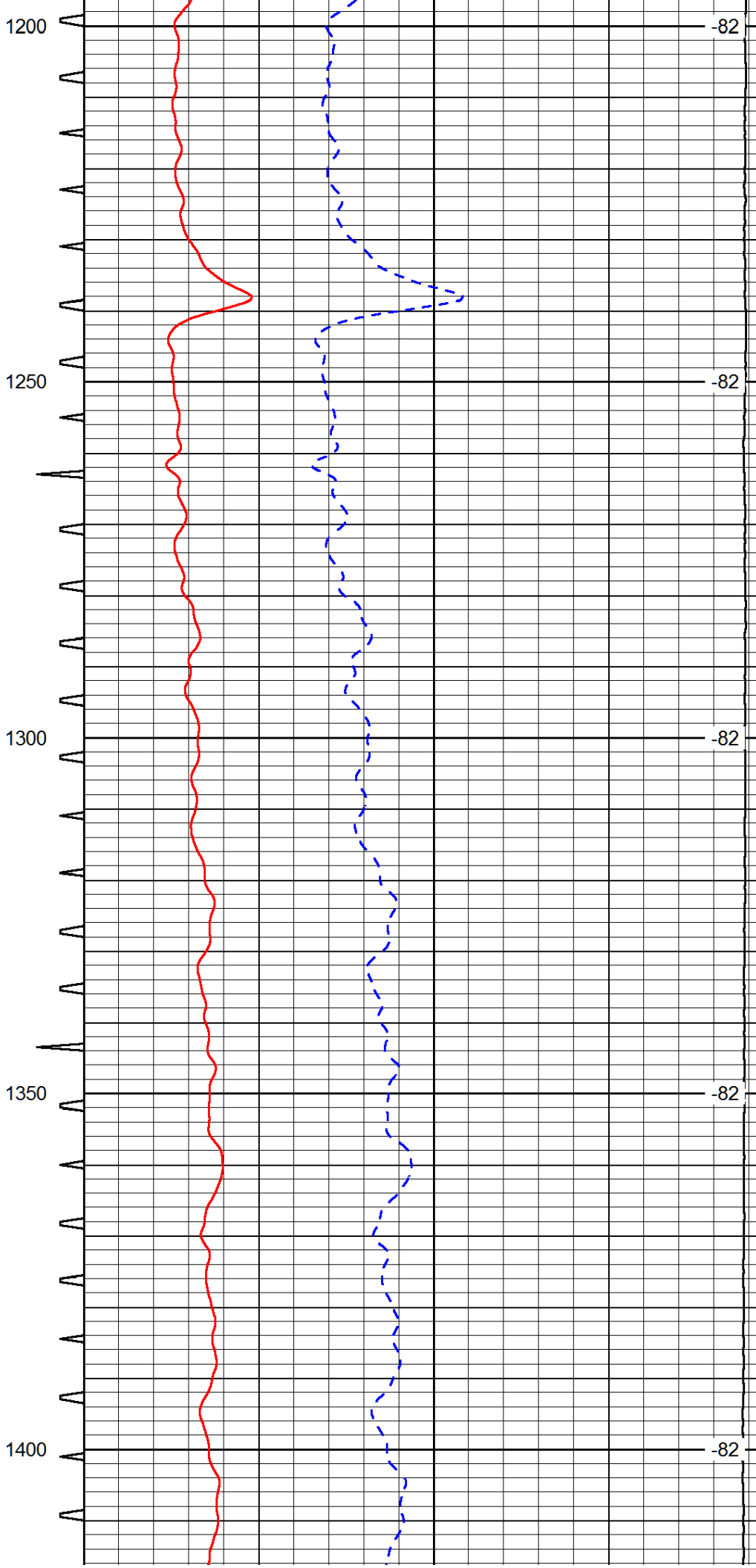
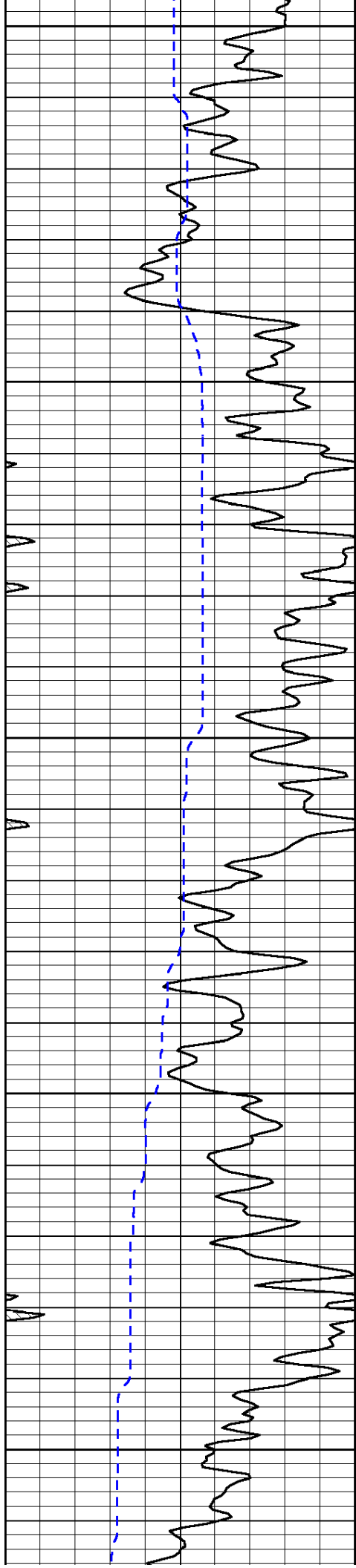
0	Gamma Ray (GAPI)	150	Sonic Int	140	Delta Time (usec/ft) (usec/ft)	40
150	Gamma Ray (GAPI)	300	5 (msec) 0	30	Sonic Porosity (pu)	-10
6	dCAL (in)	16		15000	LTEN (lb) (lb)	0
						LSPD (ft/min)

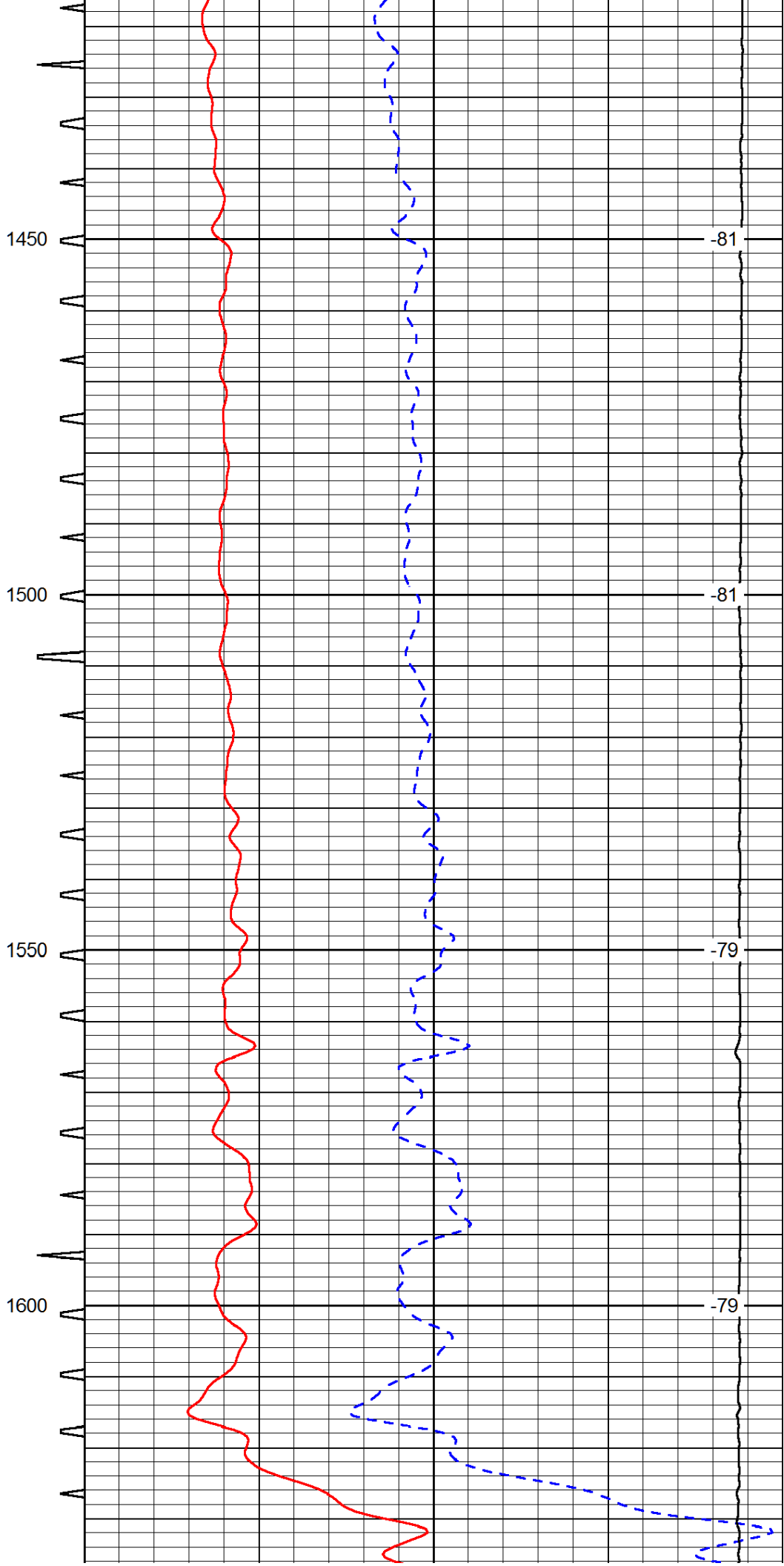
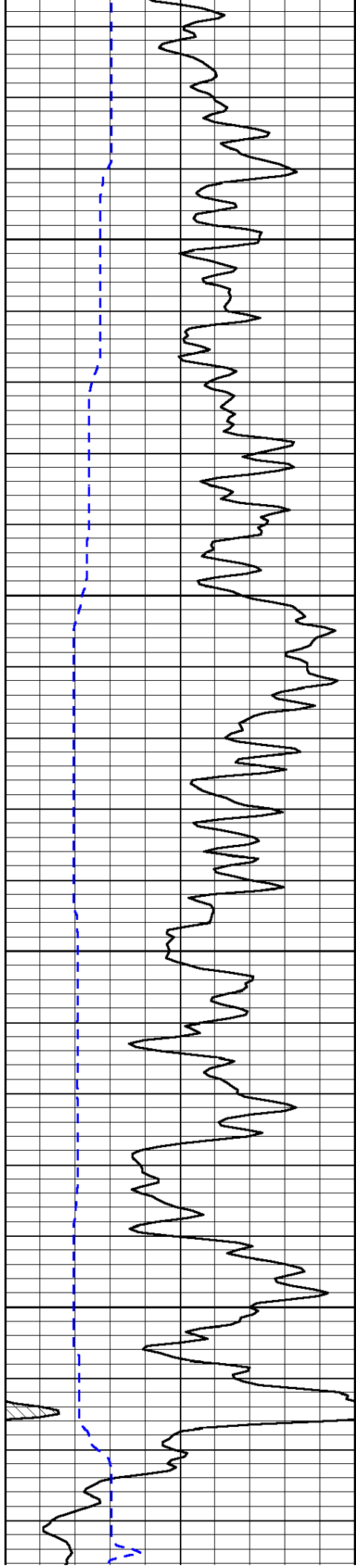


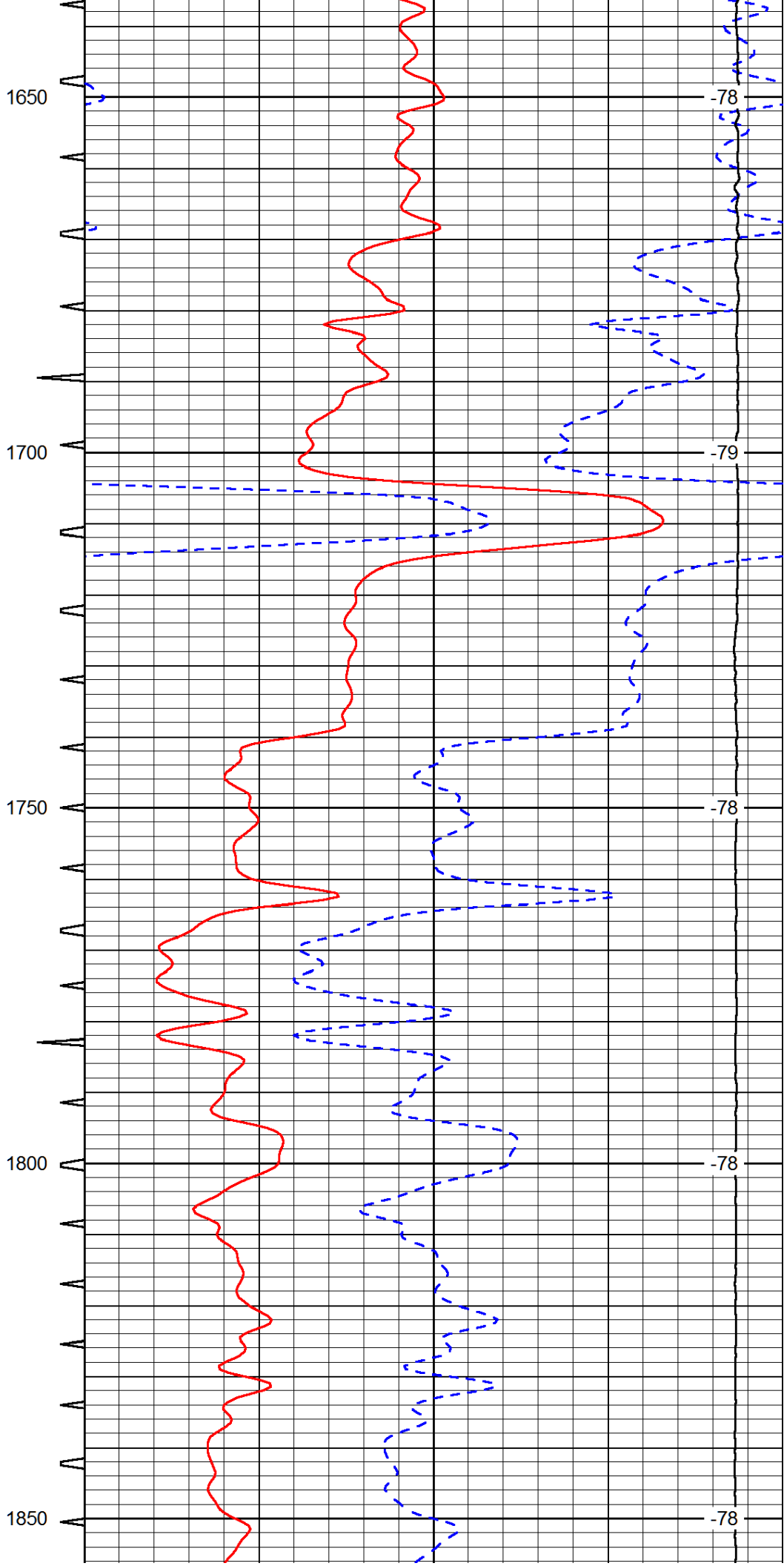
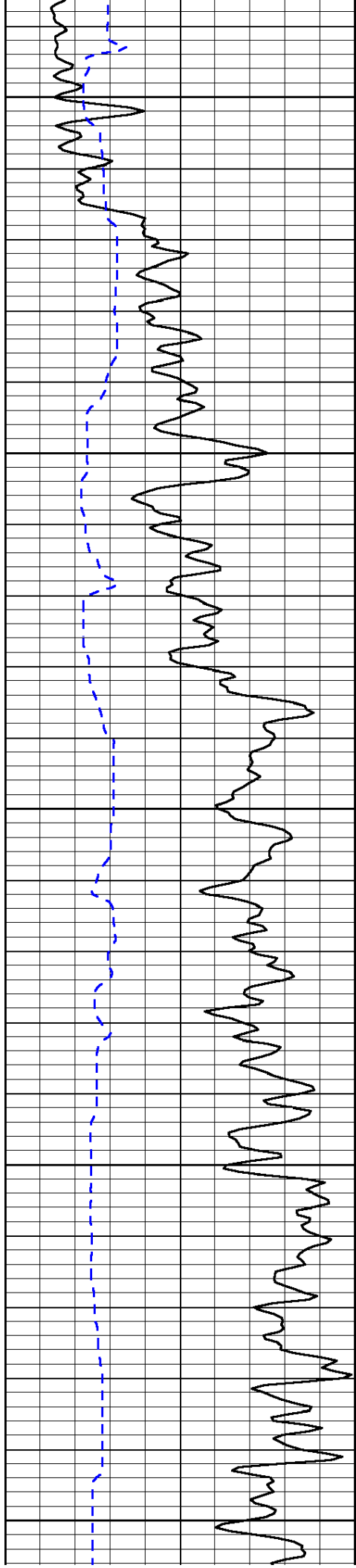


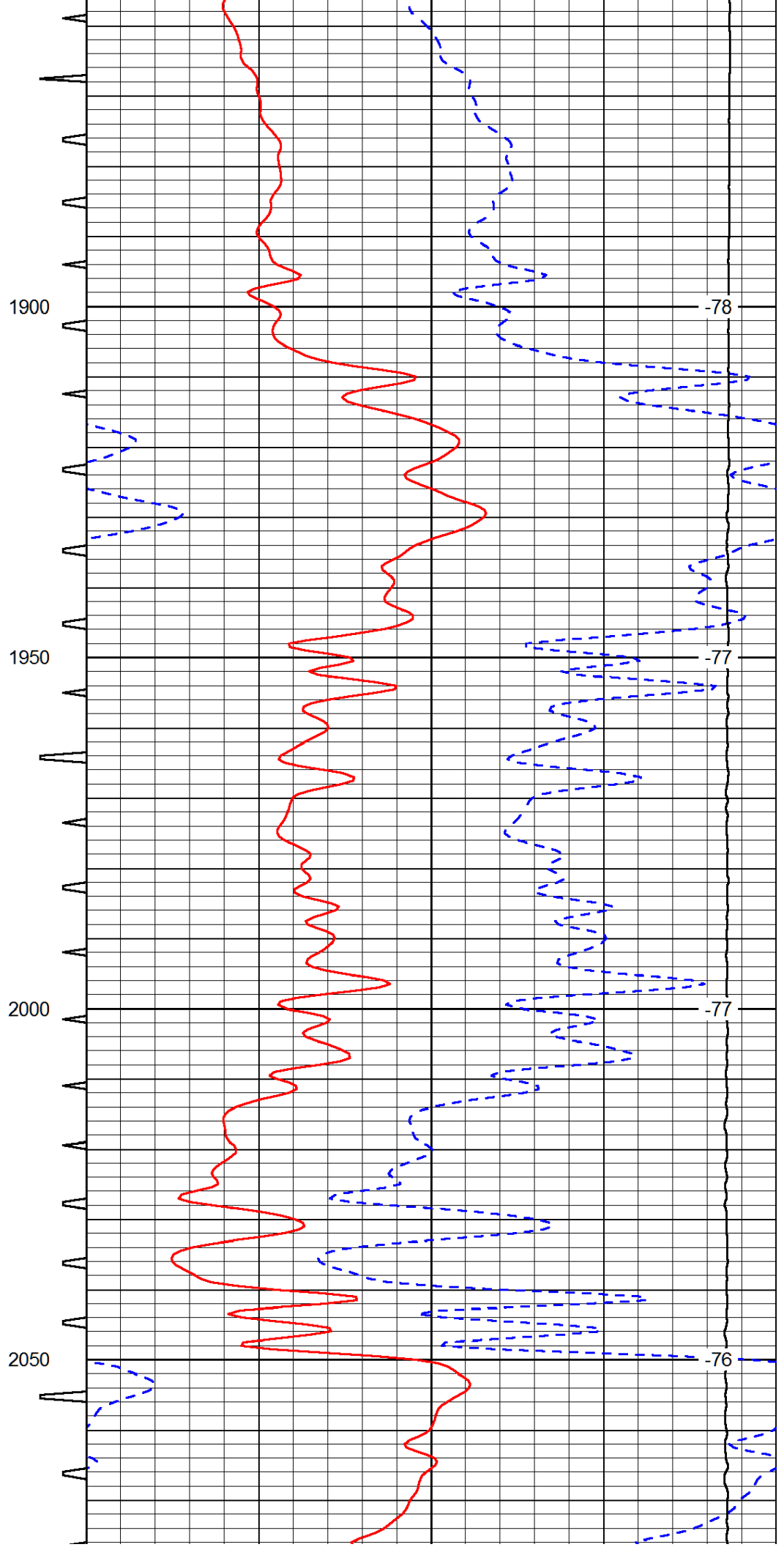
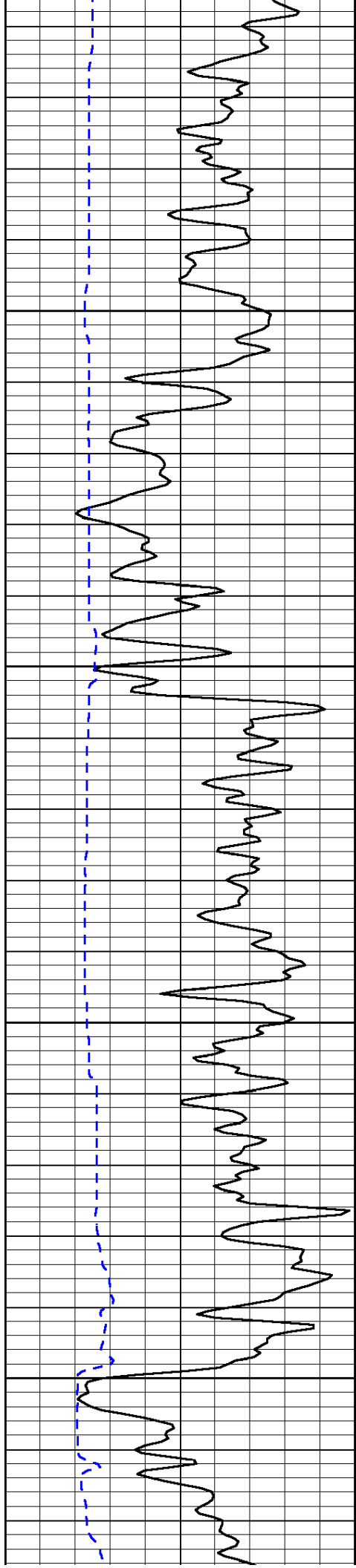


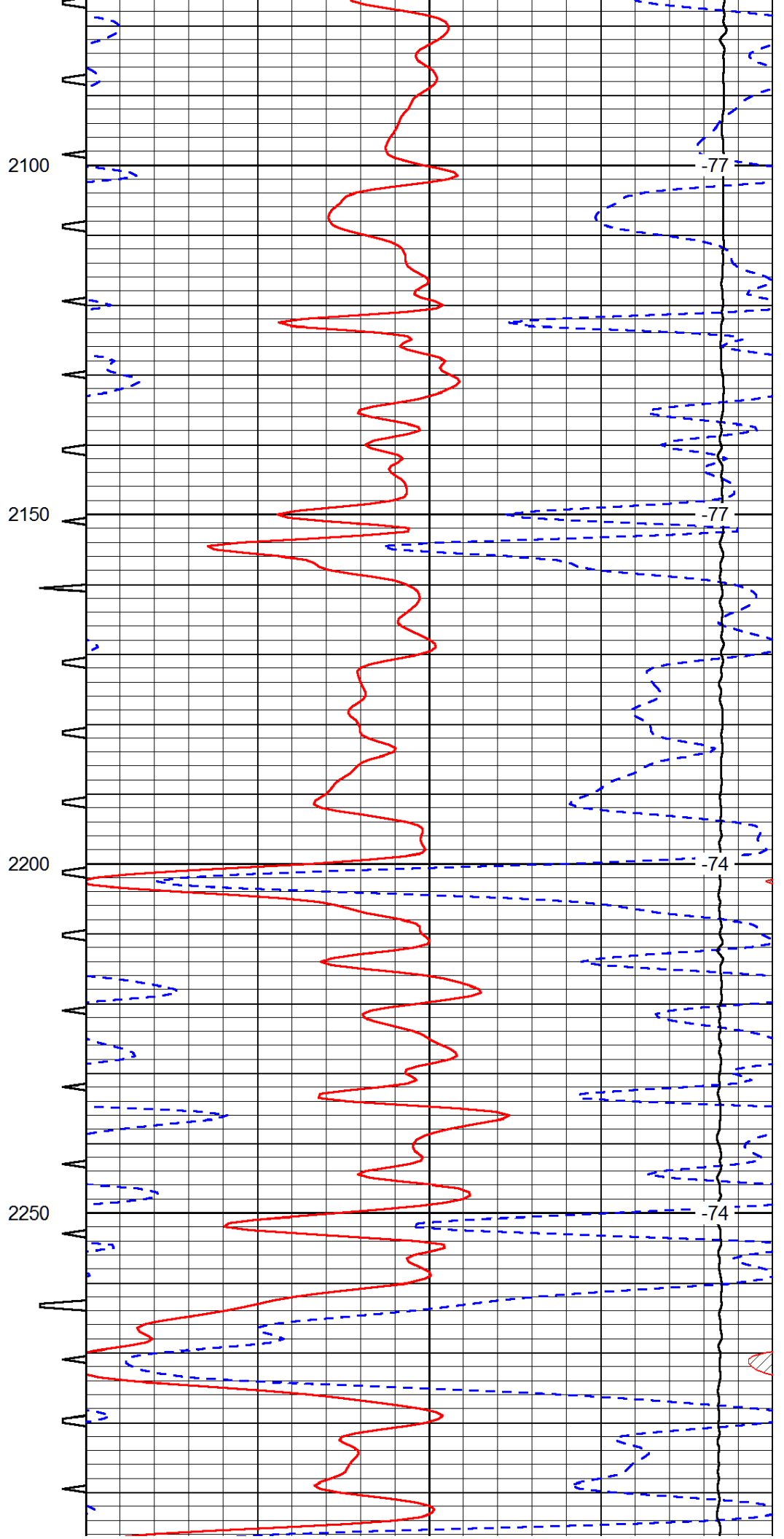
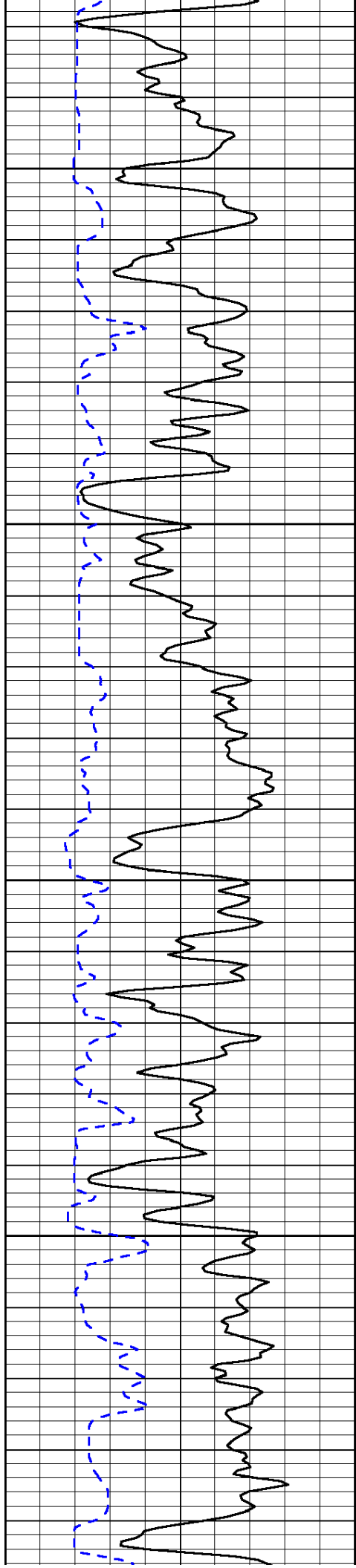


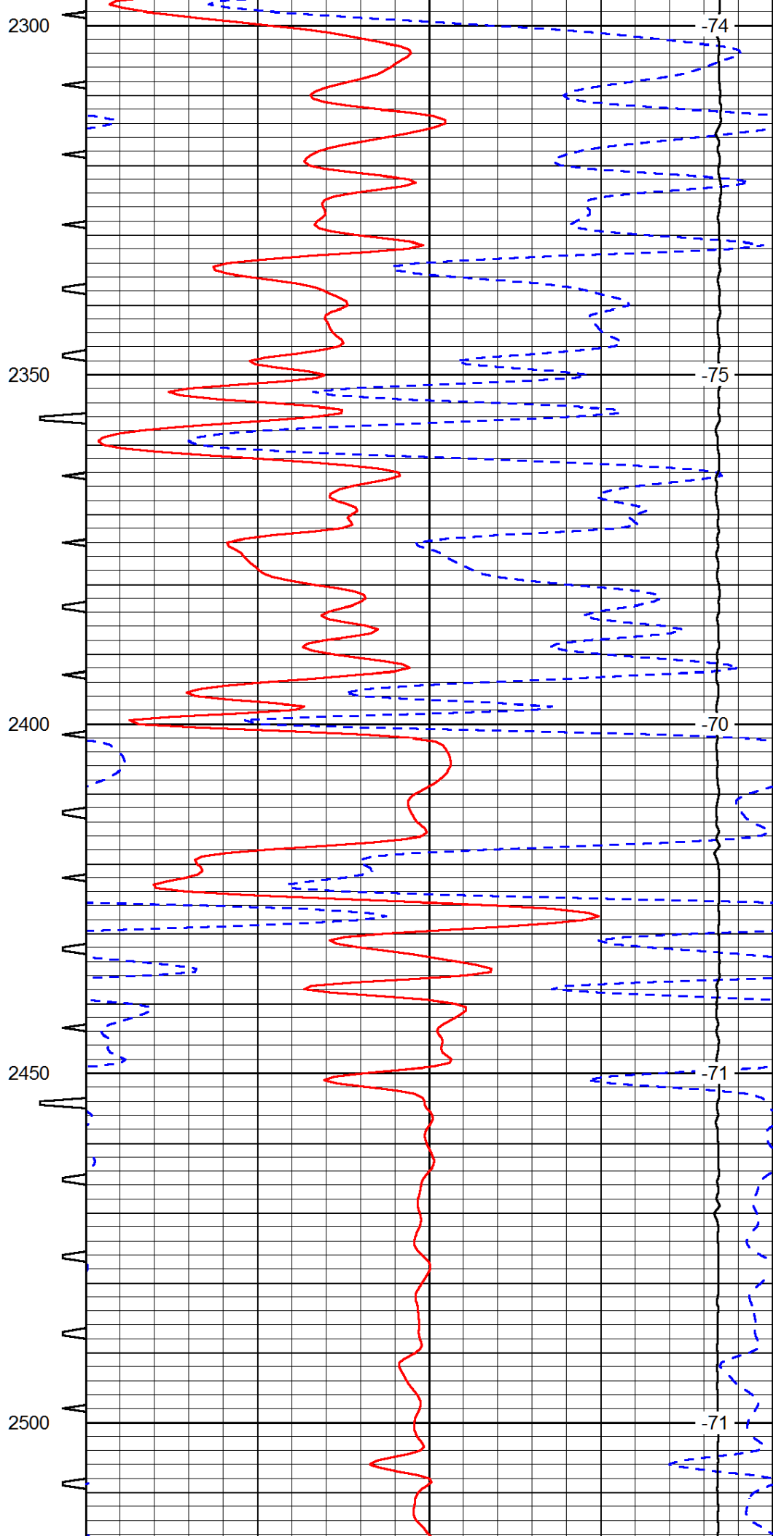
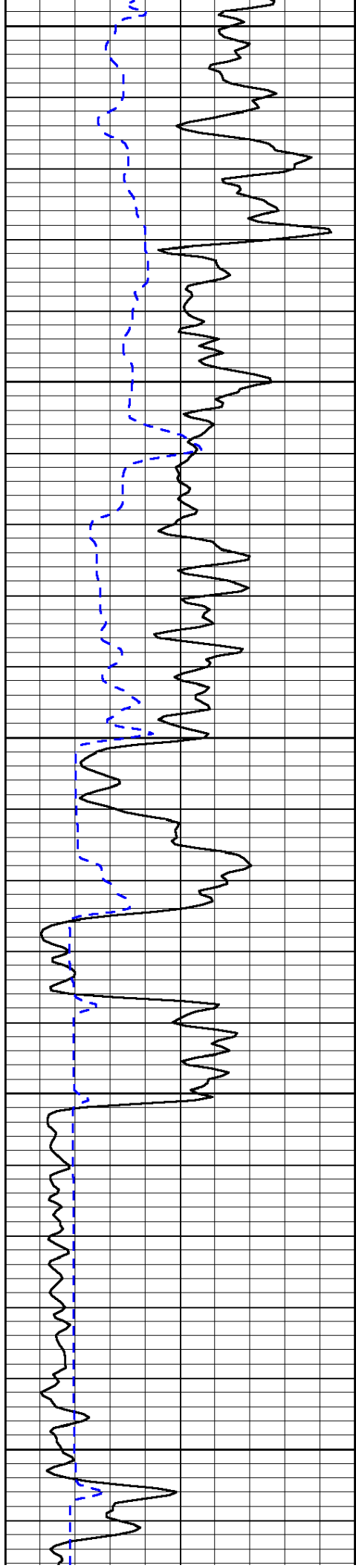


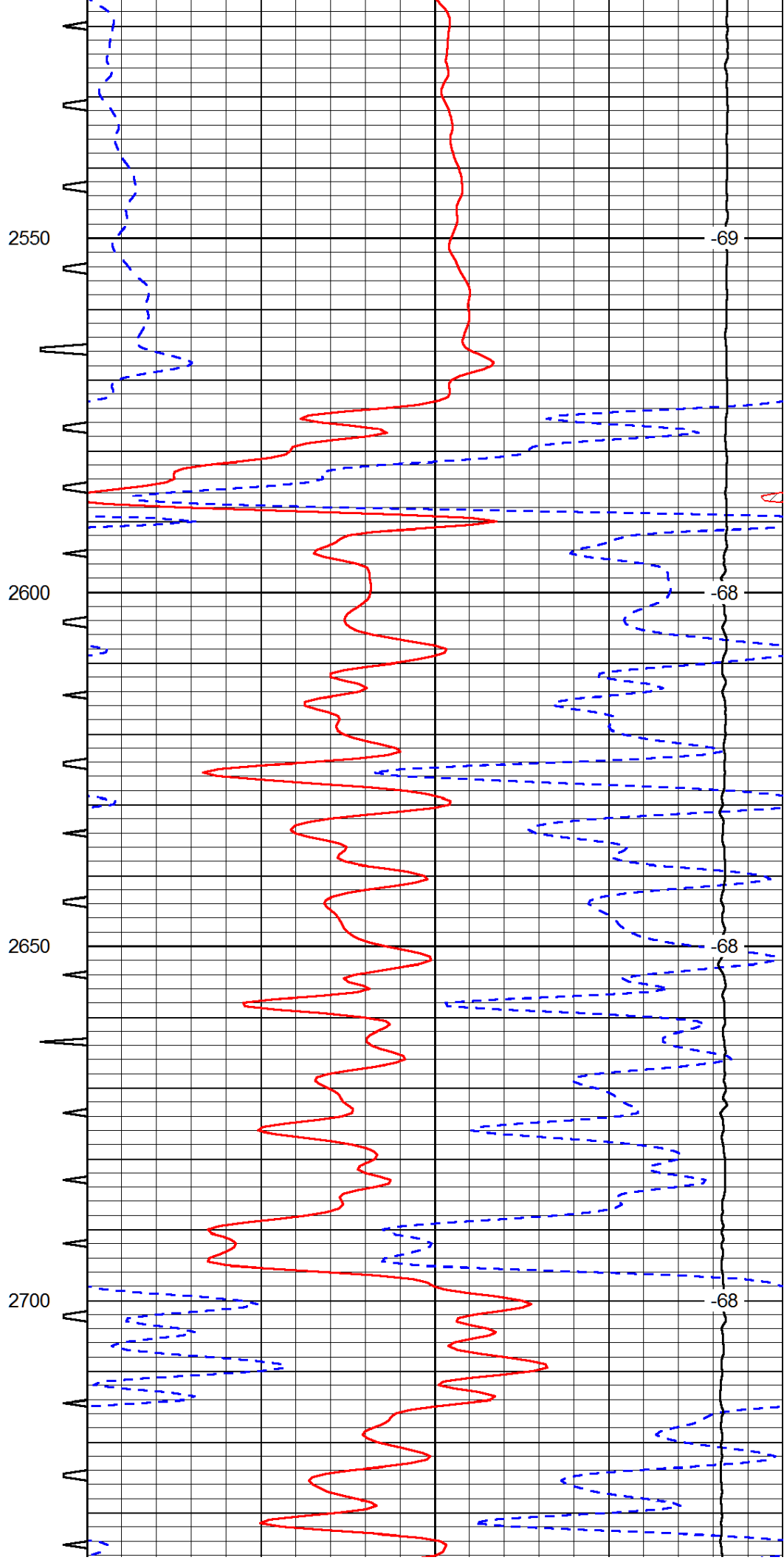
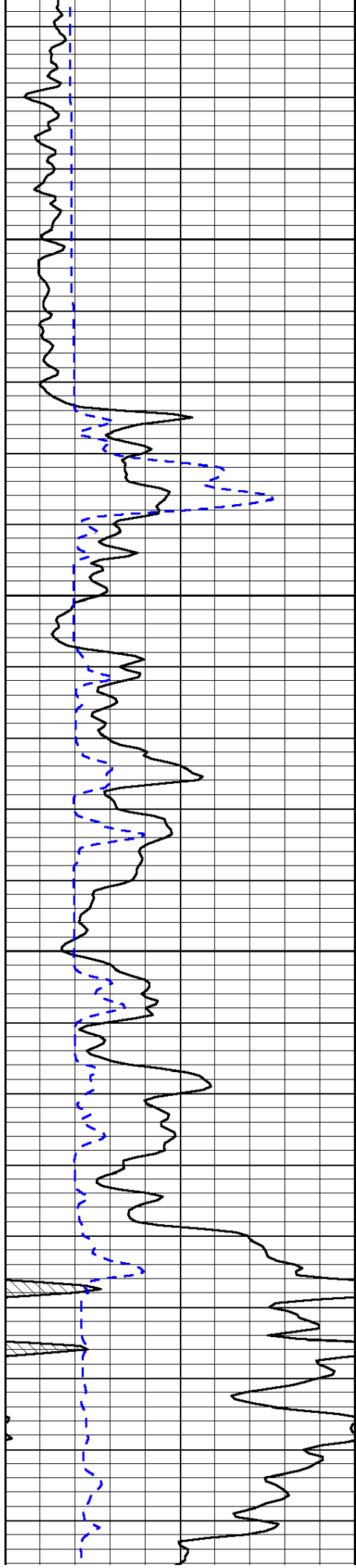


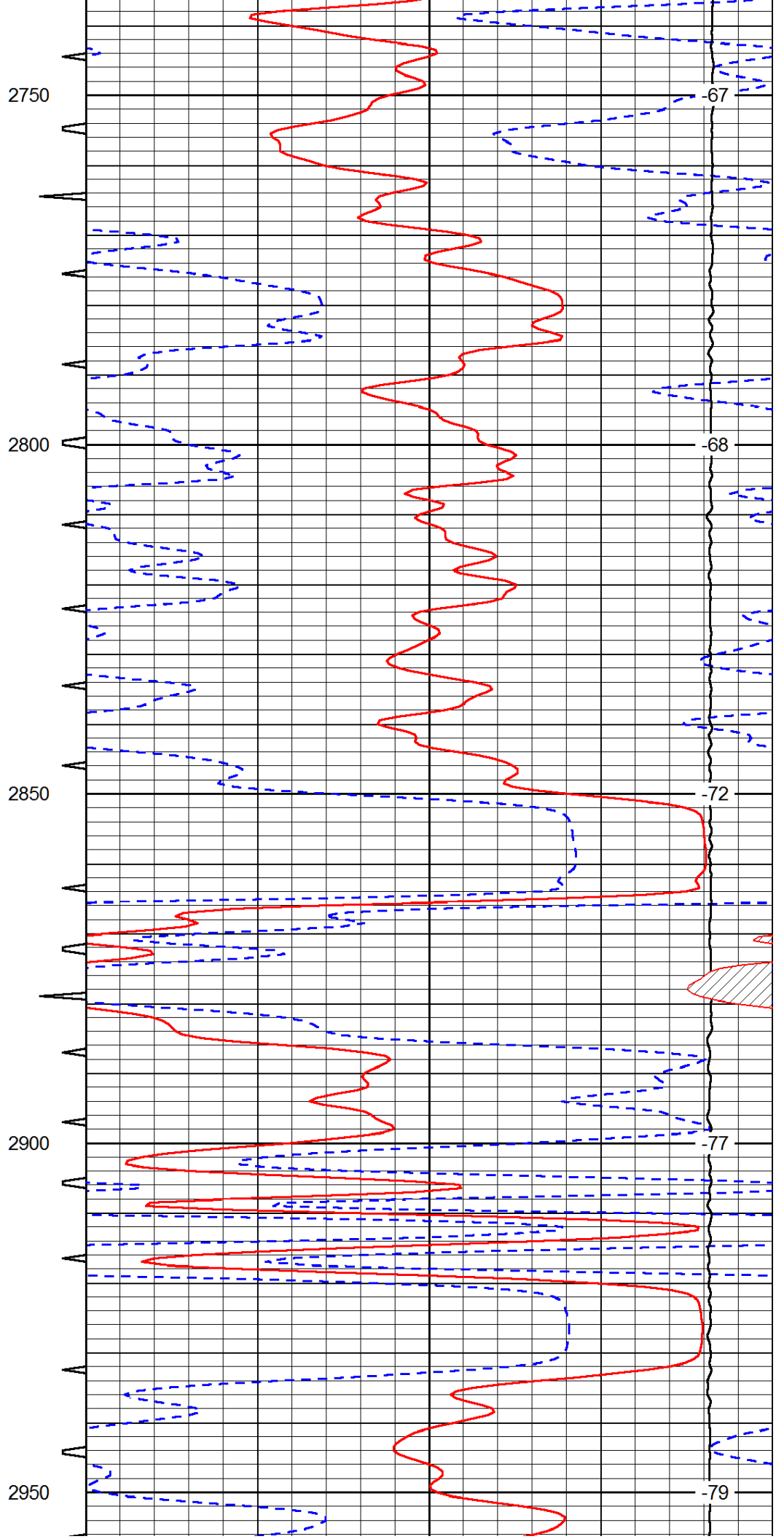
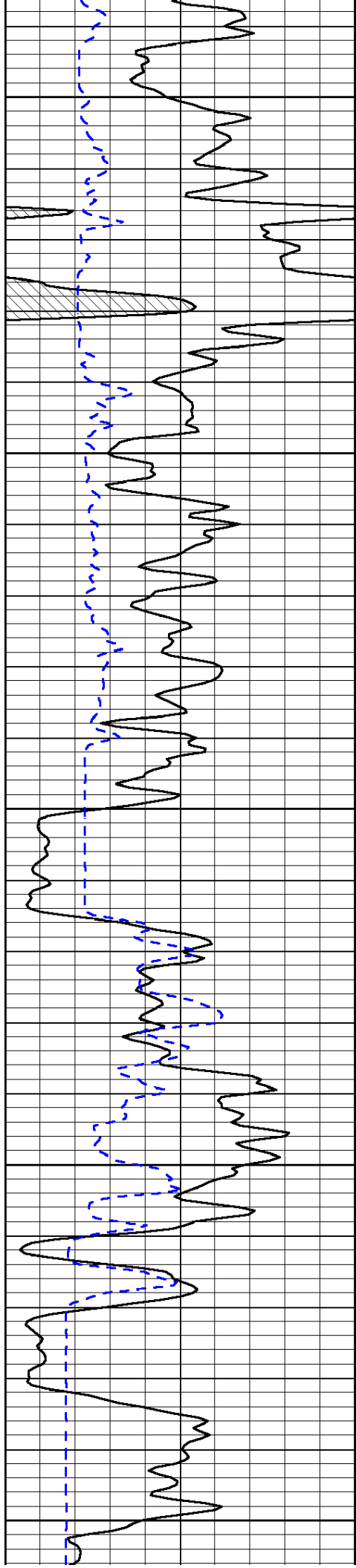


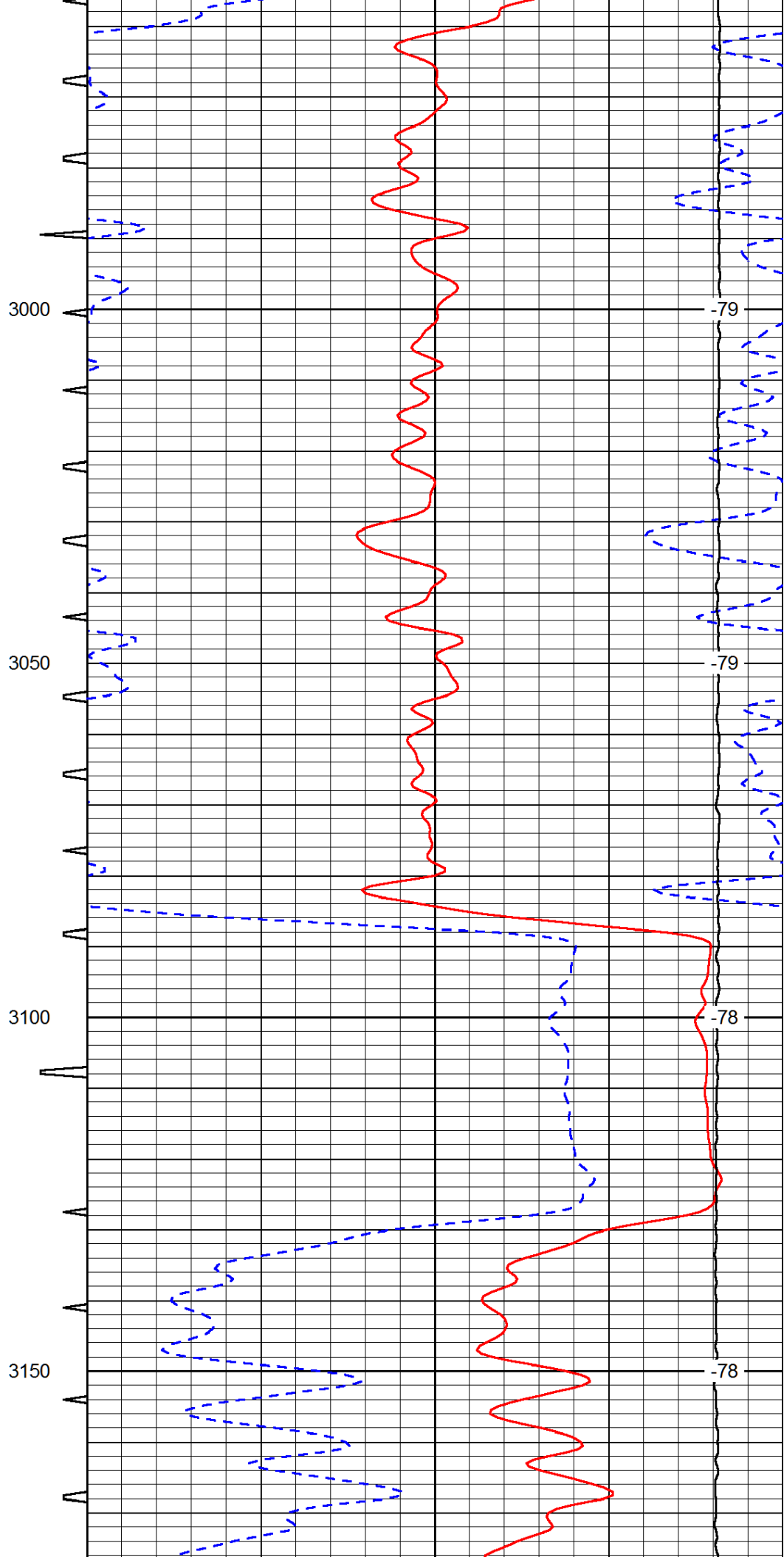
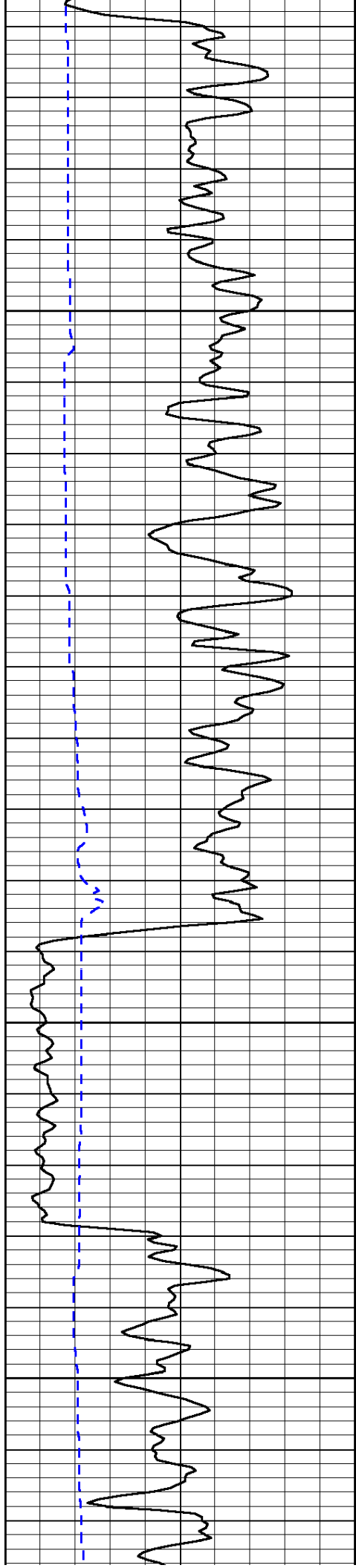


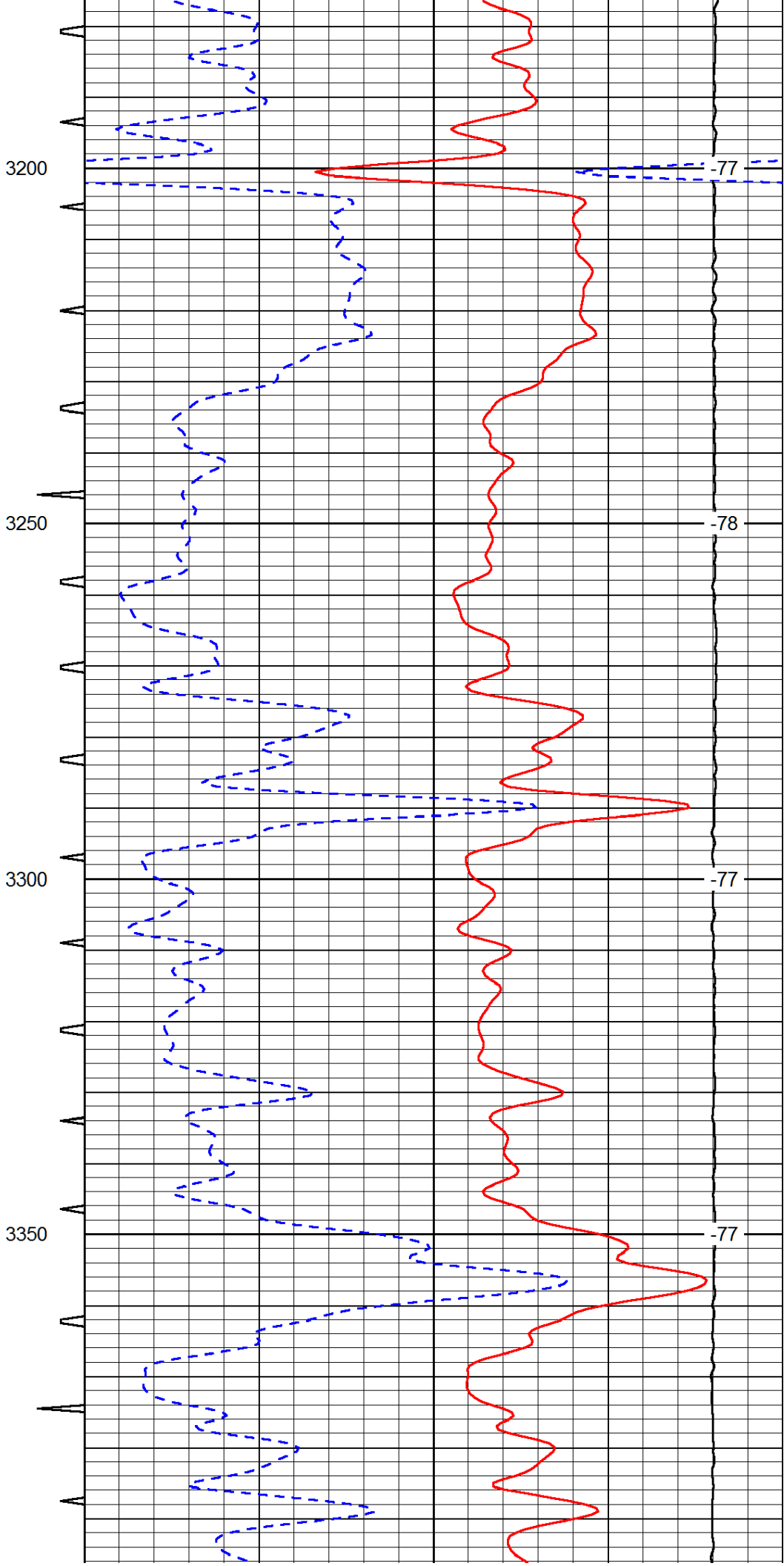
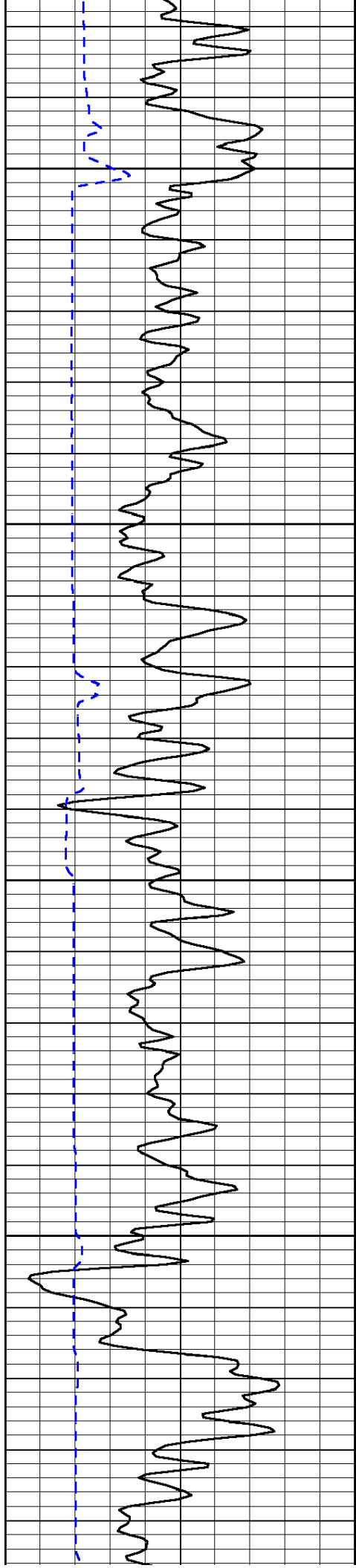


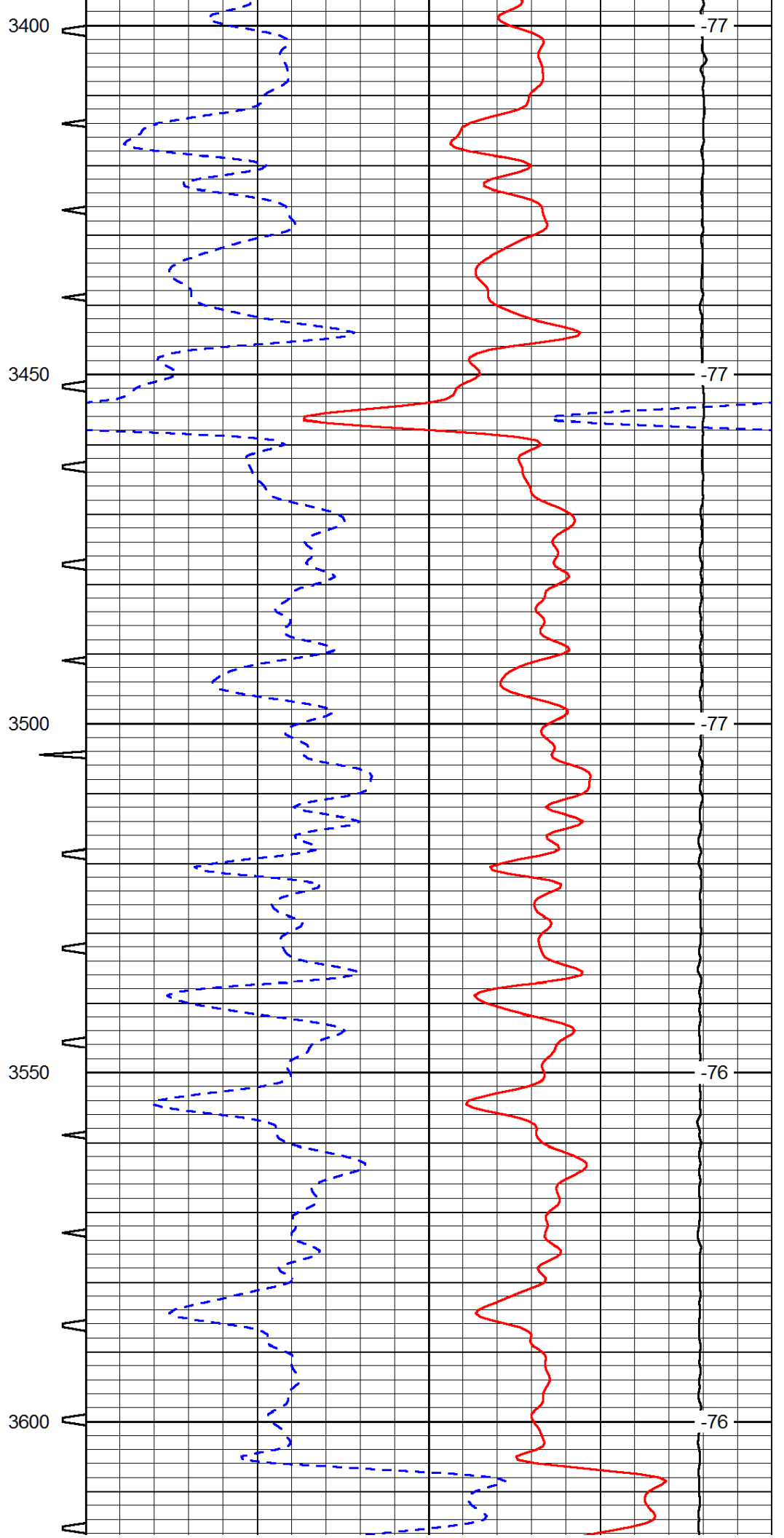
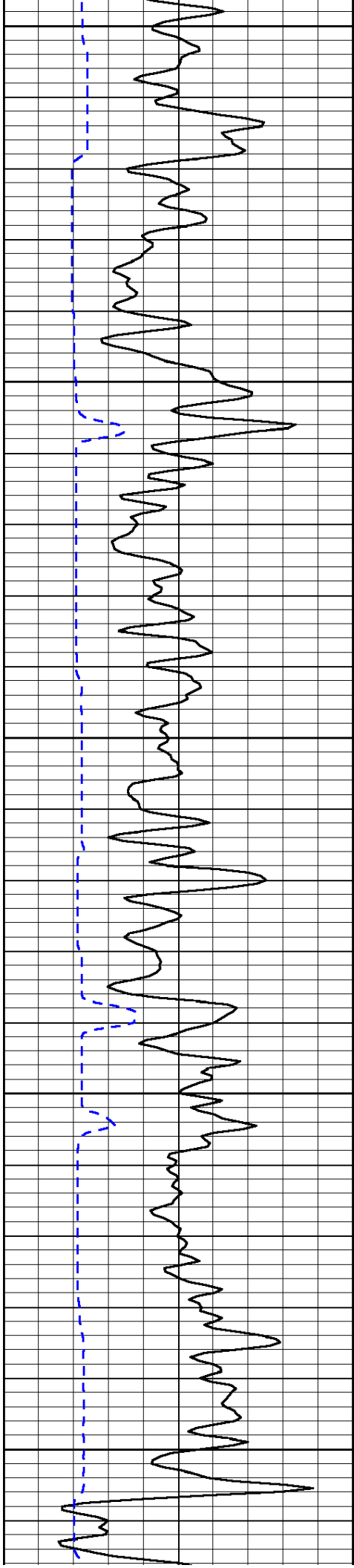


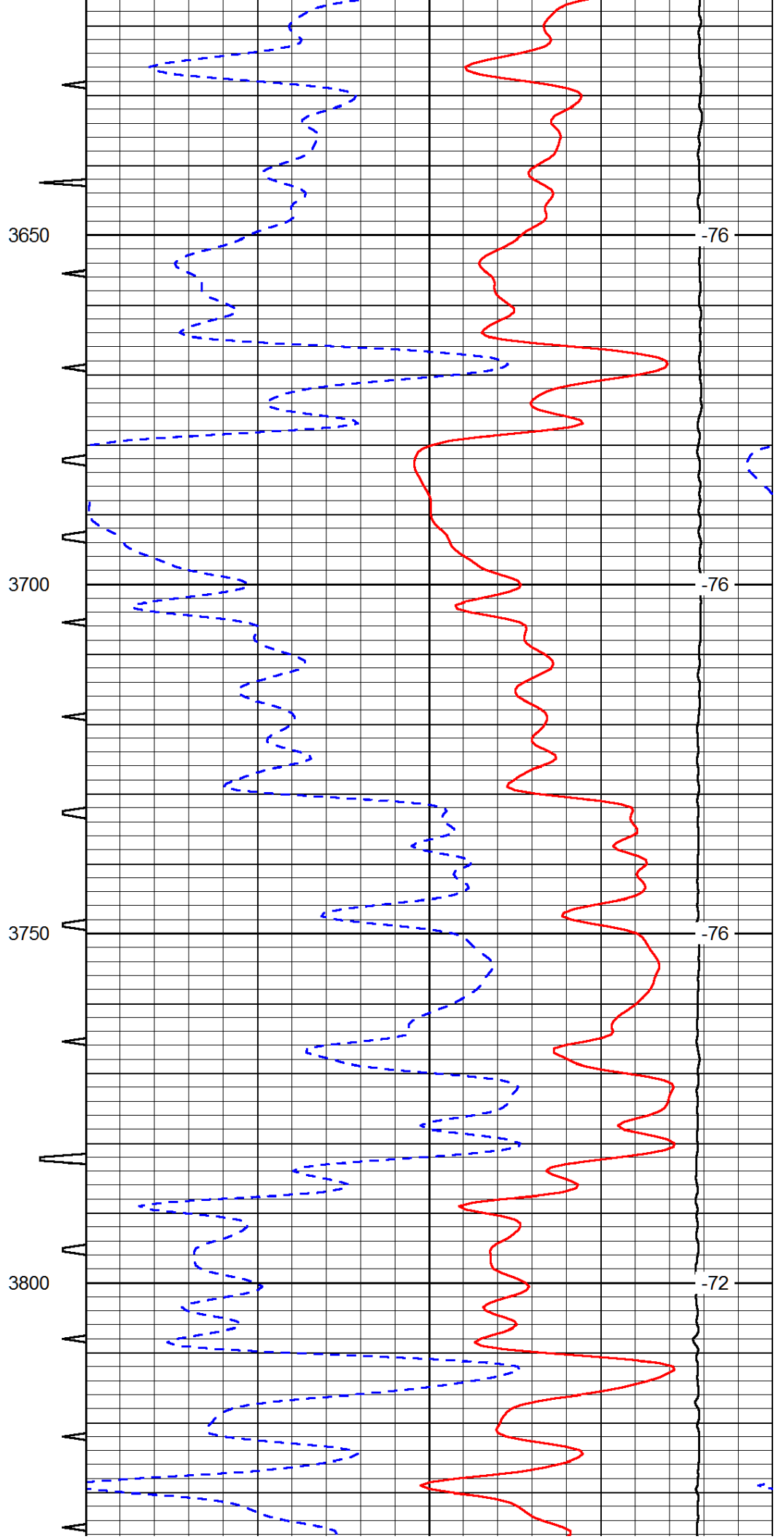
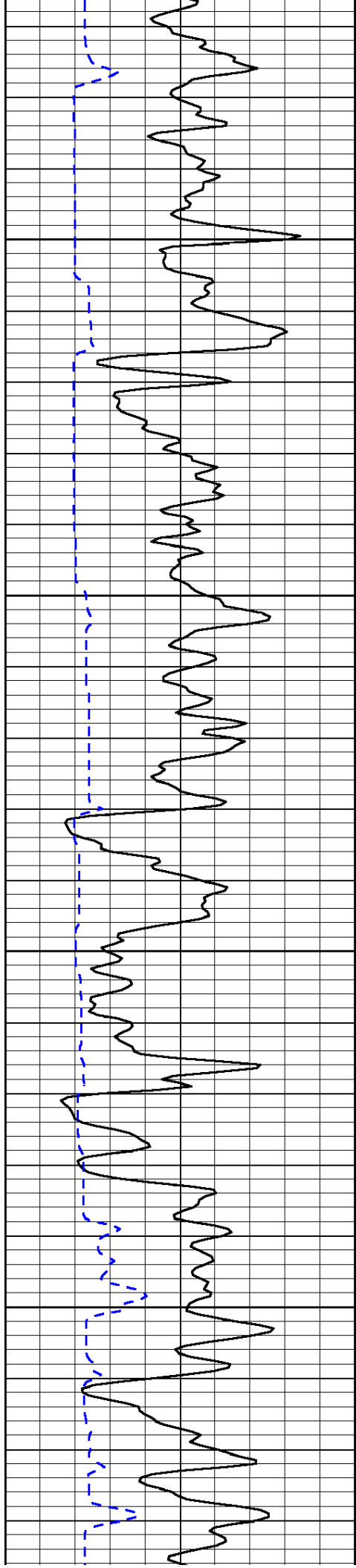


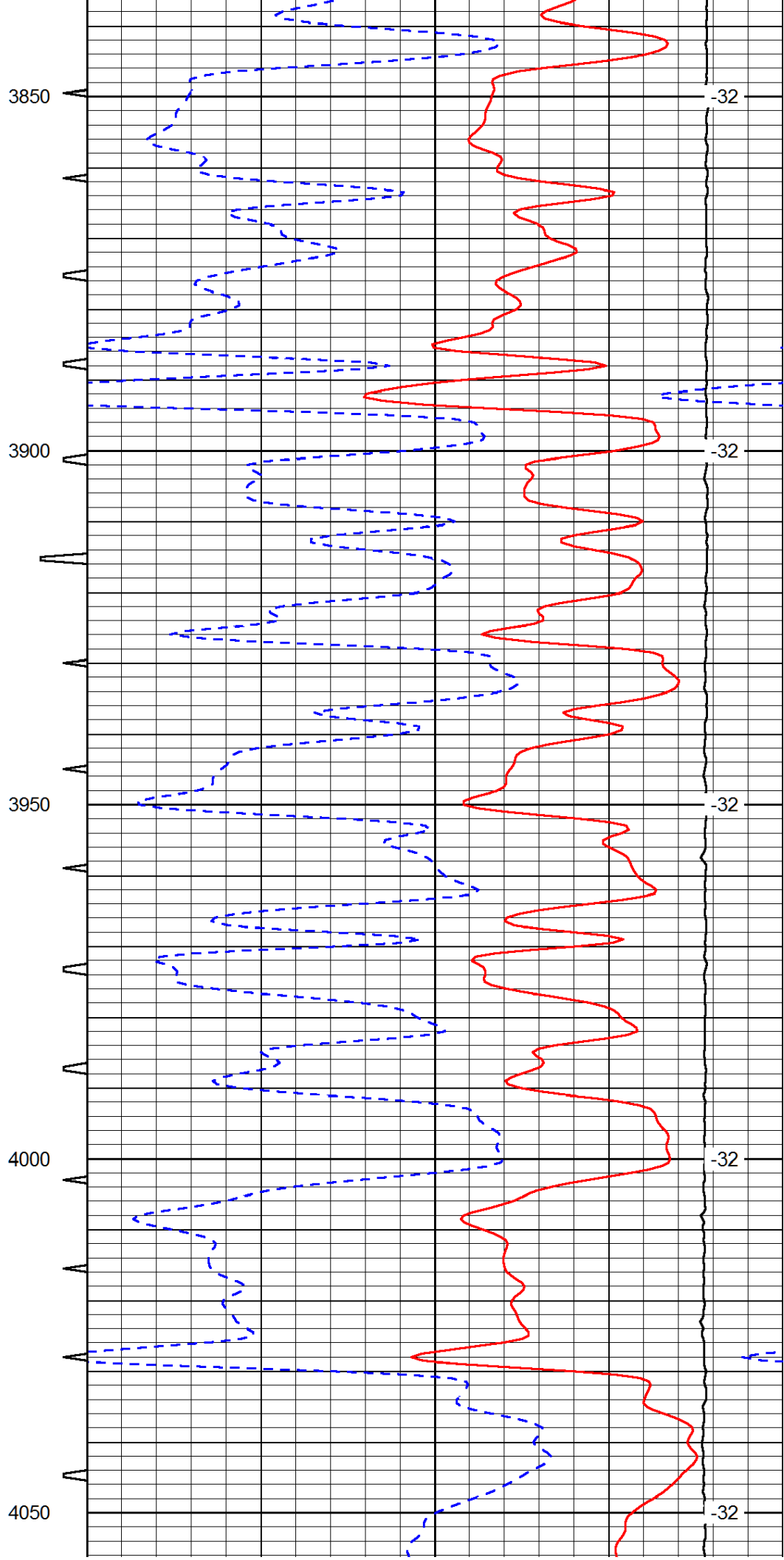
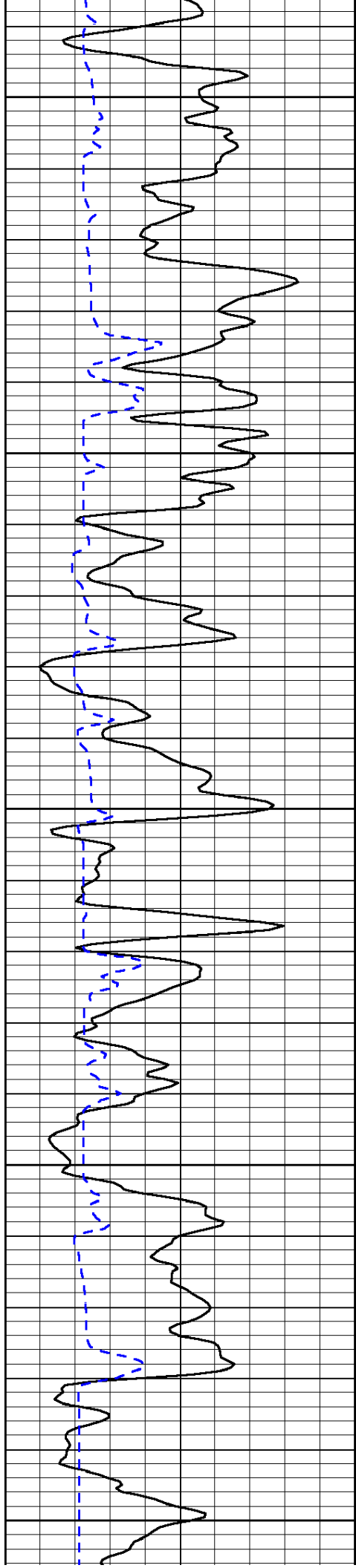


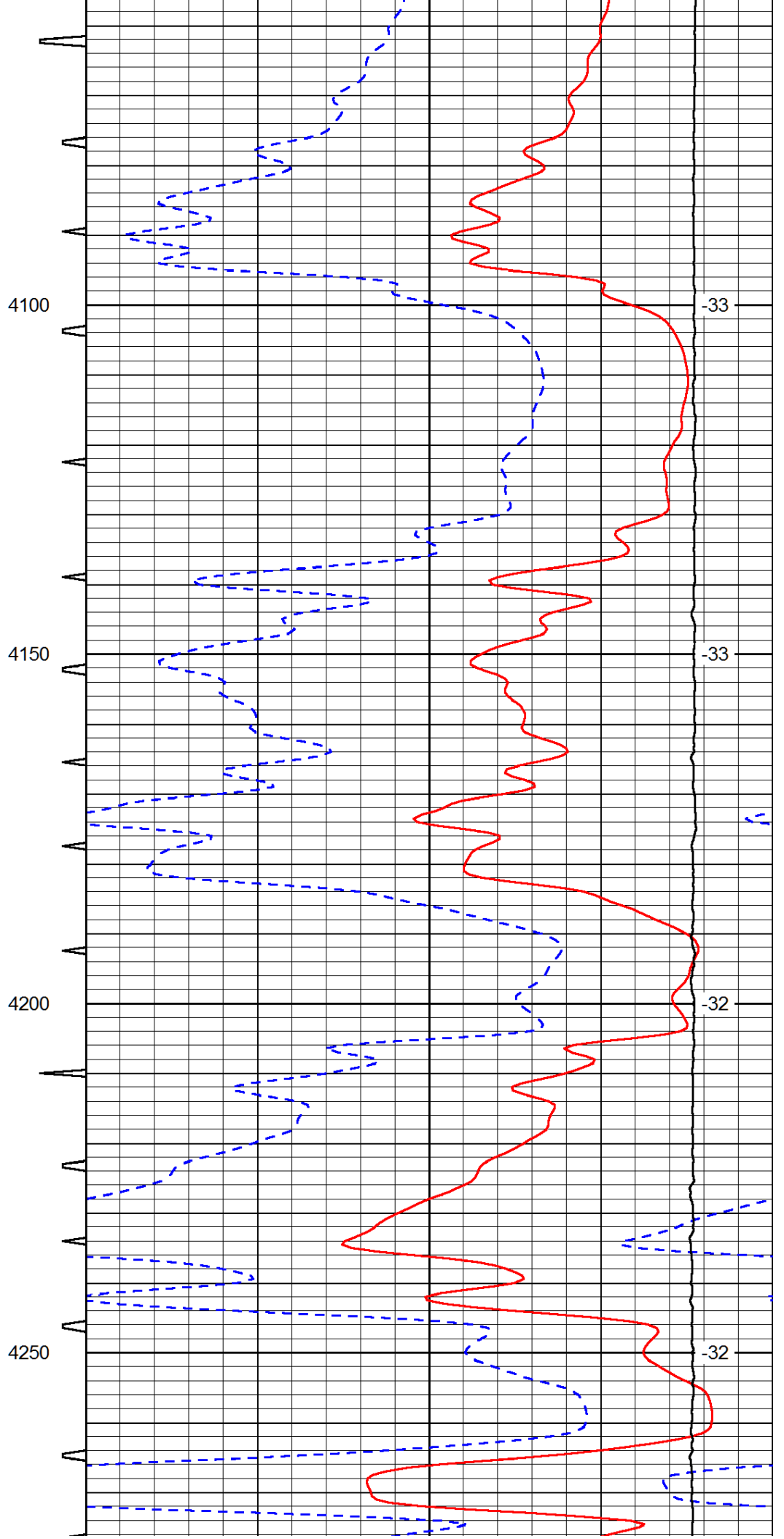
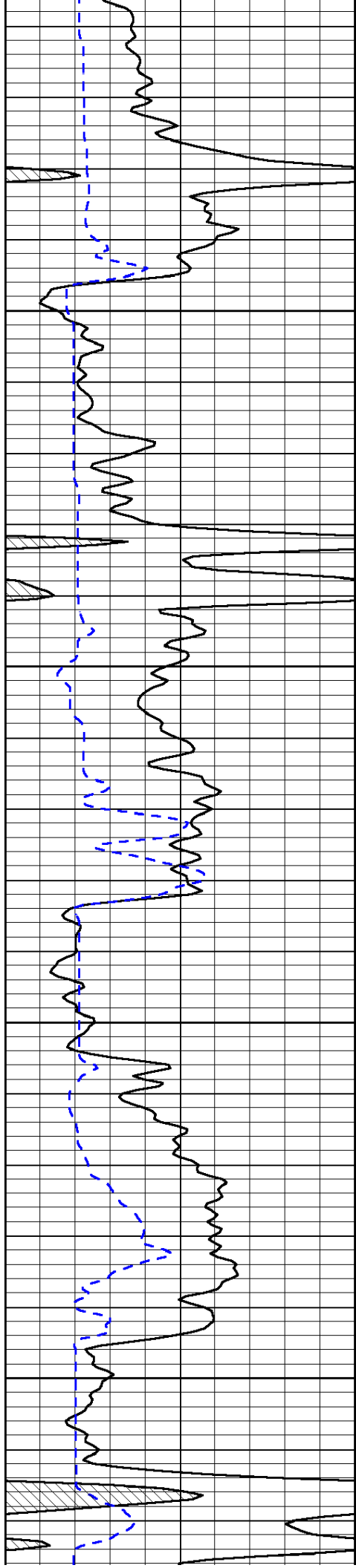


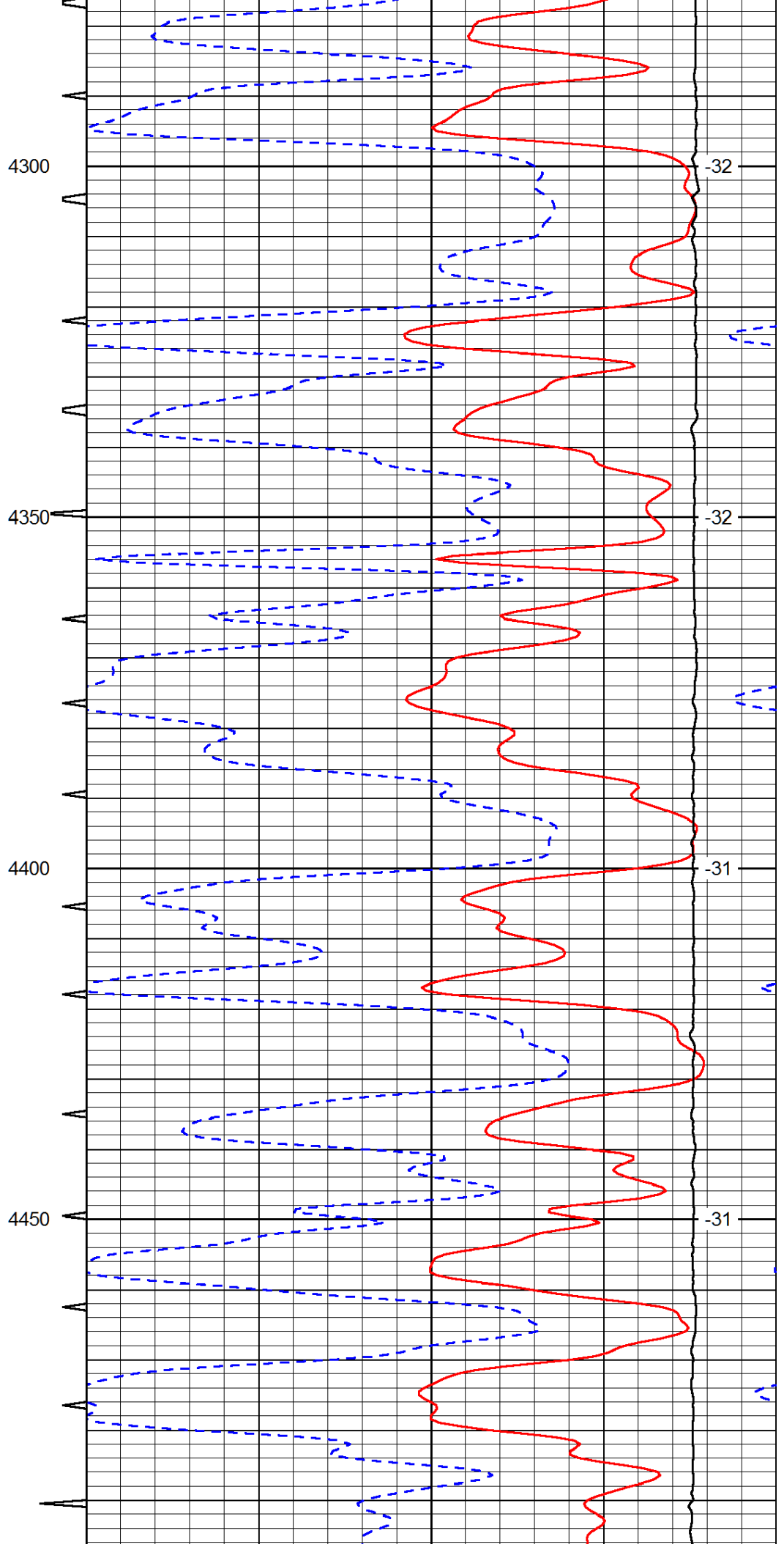
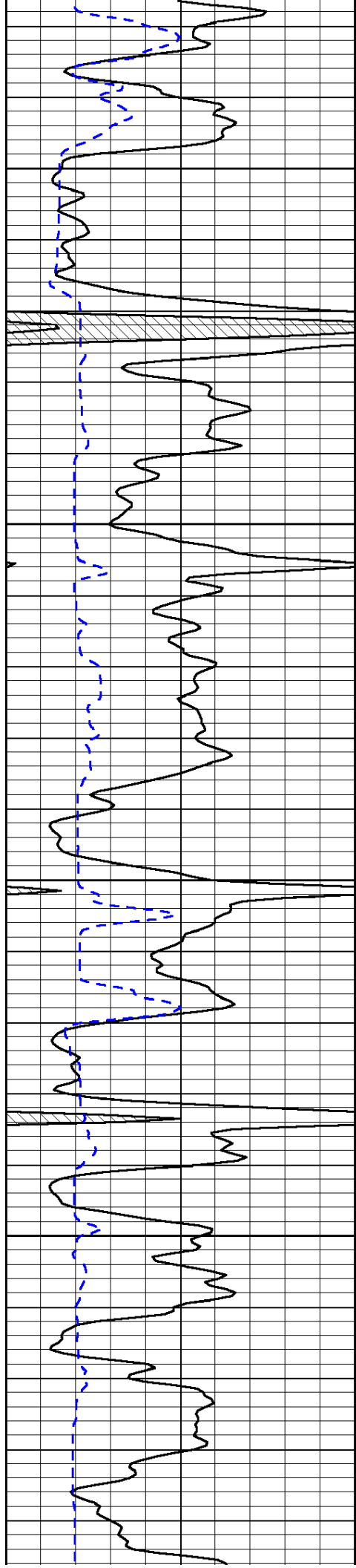


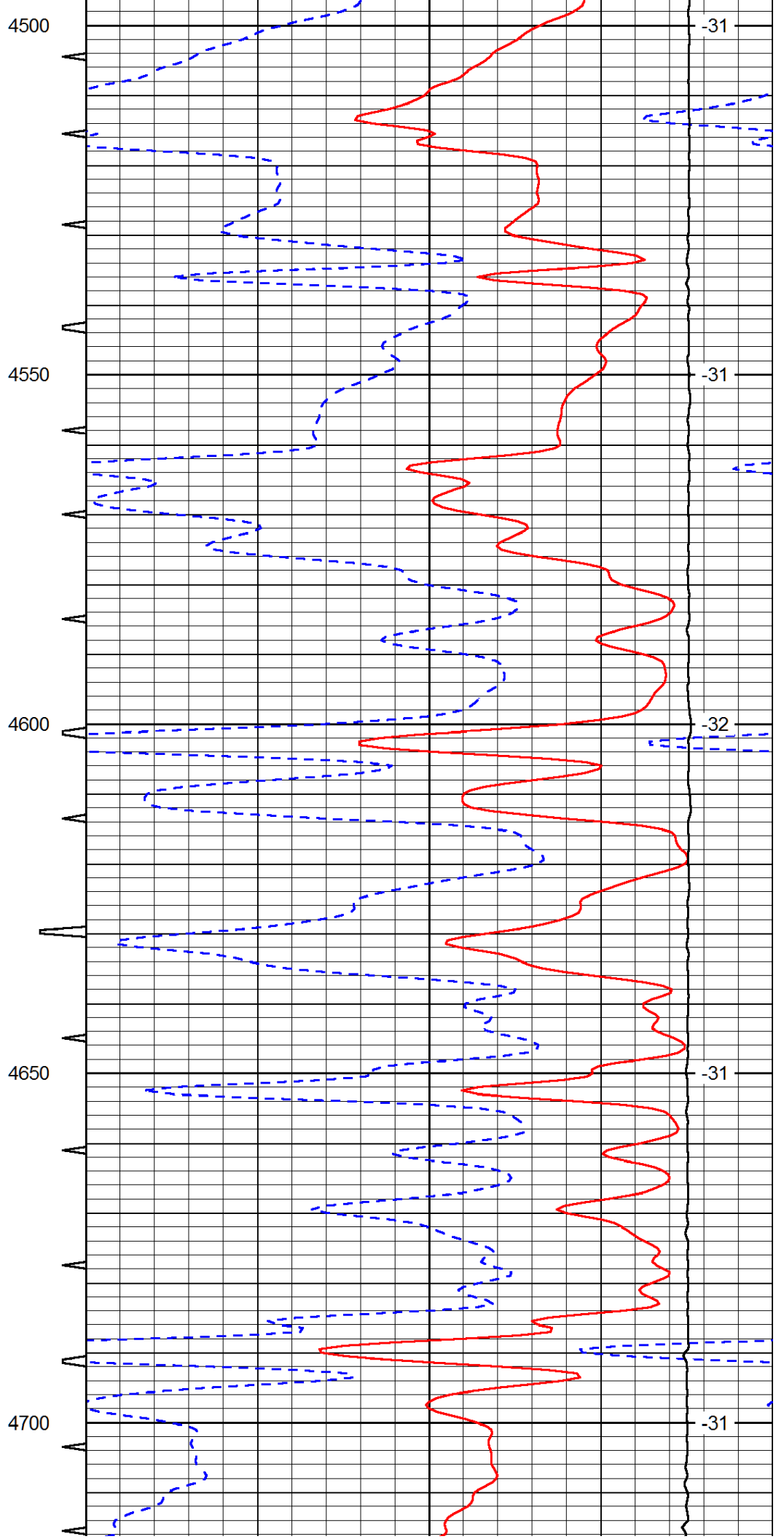
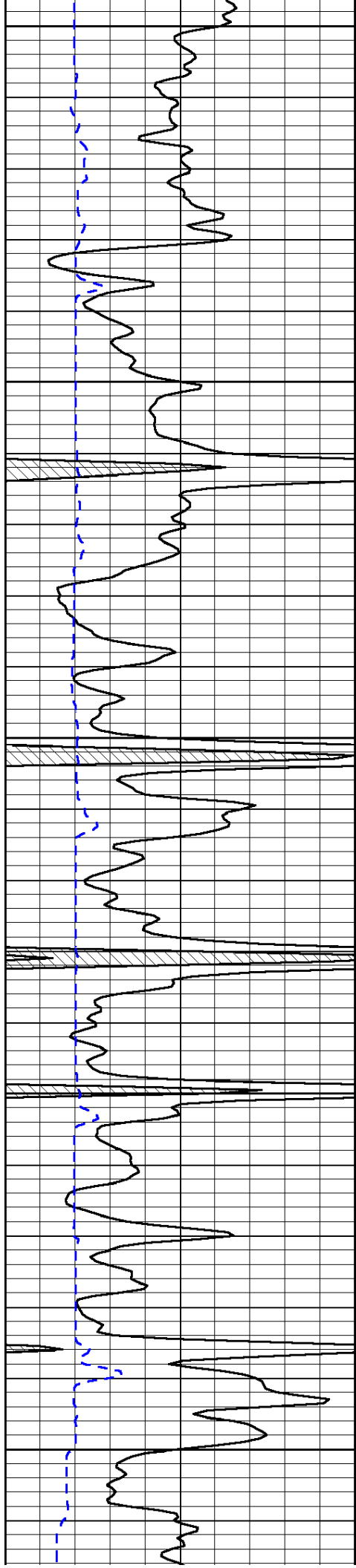


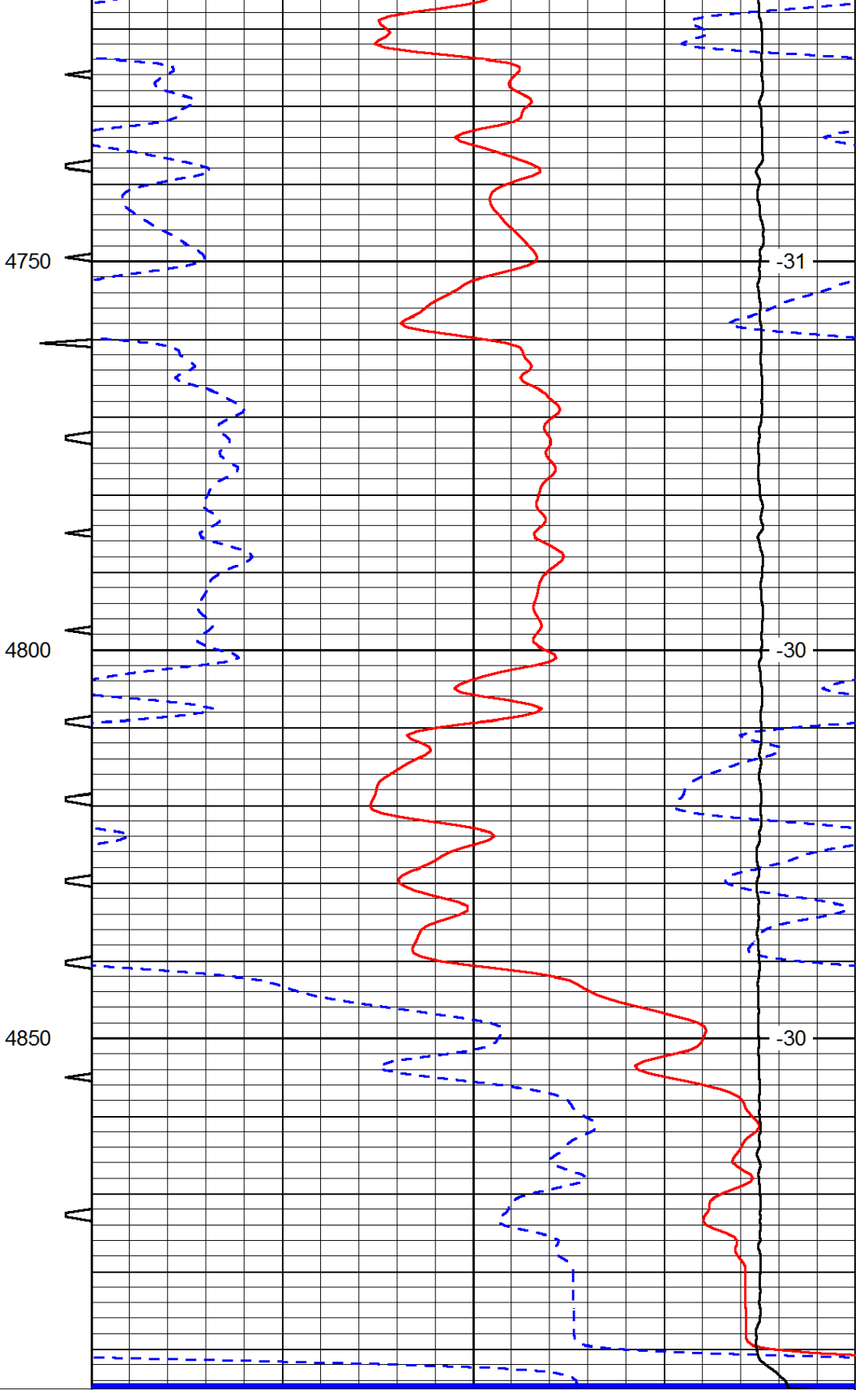
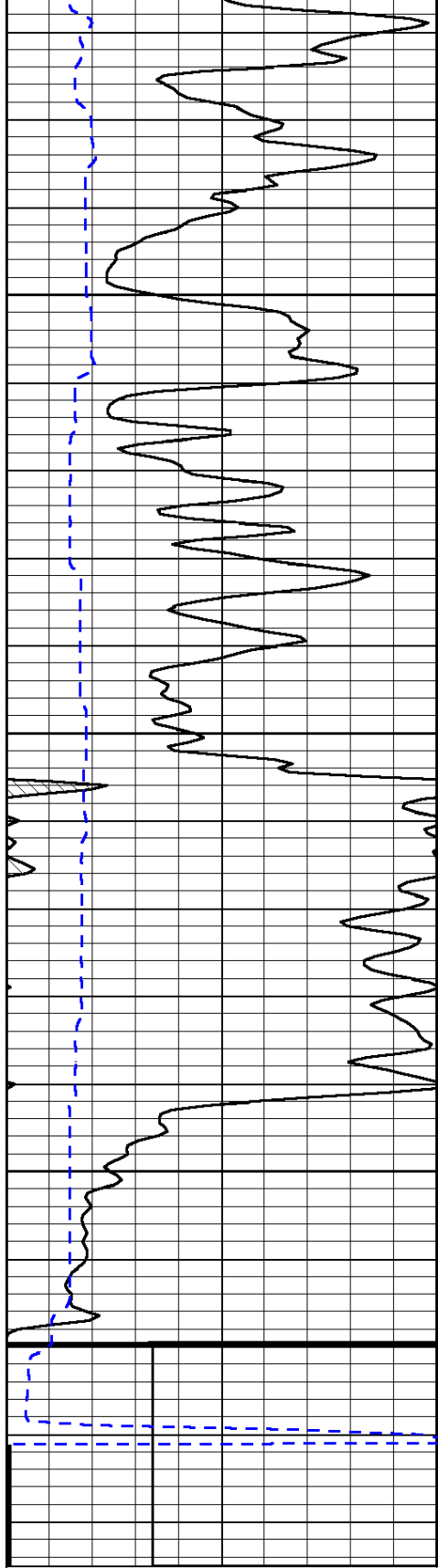












0	Gamma Ray (GAPI)	150	Sonic Int	140	Delta Time (usec/ft) (usec/ft)	40
150	Gamma Ray (GAPI)	300	5 (msec) 0	30	Sonic Porosity (pu)	-10
6	dCAL (in)	16		15000	LTEN (lb) (lb)	0

LSPD
(ft/min)