



Pioneer Energy Services

# Microresistivity Log

API No.	15-153-20992-00-00	
Company	Murfin Drilling Company, Inc.	
Well	Loker Trust # 1-1	
Field	Wildcat	
County	Rawlins	State
		Kansas
Location	1320' FSL & 1980' FWL	
Sec: 1	Twp: 3 S	Rge: 36 W
Permanent Datum	Ground Level	Elevation 3249
Log Measured From	Kelly Bushing	5 Ft. Above Perm. Datum
Drilling Measured From	Kelly Bushing	
		Other Services CNL/CDL DIL/BHCS
		Elevation K.B. 3254 D.F. 3249 G.L. 3249

Date	03-13-2014
Run Number	Two
Depth Driller	4890
Depth Logger	4892
Bottom Logged Interval	4891
Top Log Interval	3850
Casing Driller	8.625 @ 350
Casing Logger	352
Bit Size	7.875
Type Fluid in Hole	Chemical
Salinity, ppm CL	700
Density / Viscosity	9.4   60
pH / Fluid Loss	10.0   6.4
Source of Sample	Flowline
Rm @ Meas. Temp	1.4 @ 45
Rmf @ Meas. Temp	1.05 @ 45
Rmc @ Meas. Temp	1.89 @ 45
Source of Rmf / Rmc	Charts
Rm @ BHT	0.50 @ 127
Operating Rig Time	5 1/2 Hours
Max Rec. Temp. F	127
Equipment Number	91
Location	Hays
Recorded By	Y. Ruiz
Witnessed By	Jeff Christian

<<< Fold Here >>>

All interpretations are opinions based on inferences from electrical or other measurements and we cannot and do not guarantee the accuracy or correctness of any interpretation, and we shall not, except in the case of gross or willful negligence on our part, be liable or responsible for any loss, costs, damages, or expenses incurred or sustained by anyone resulting from any interpretation made by any of our officers, agents or employees. These interpretations are also subject to our general terms and conditions set out in our current Price Schedule.

Comments

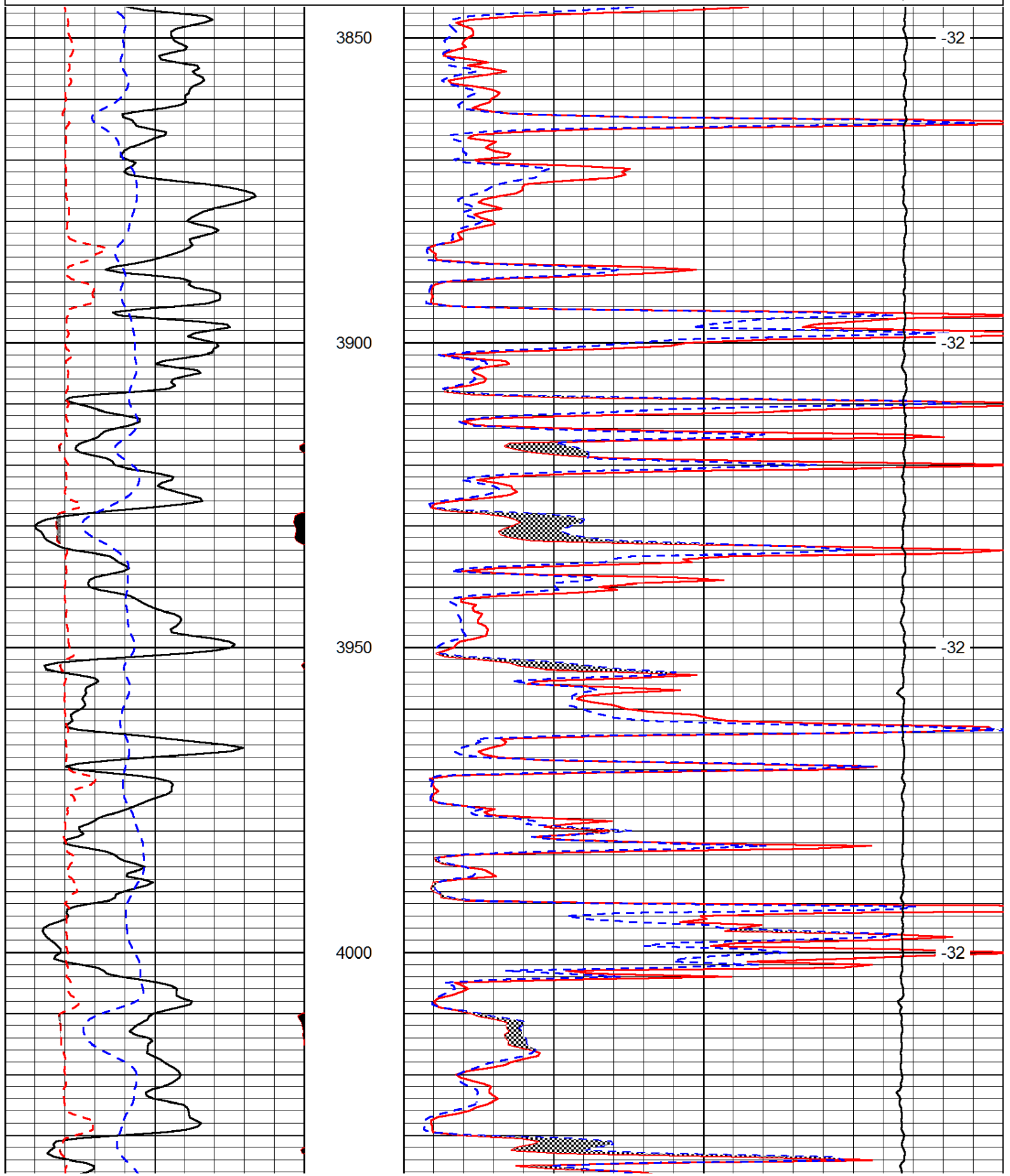
Thank you for using Log-Tech, Inc.  
(785) 625-3858  
  
Atwood,  
West to 7 Rd, 2 North to R Rd, 1/2 West,  
North into

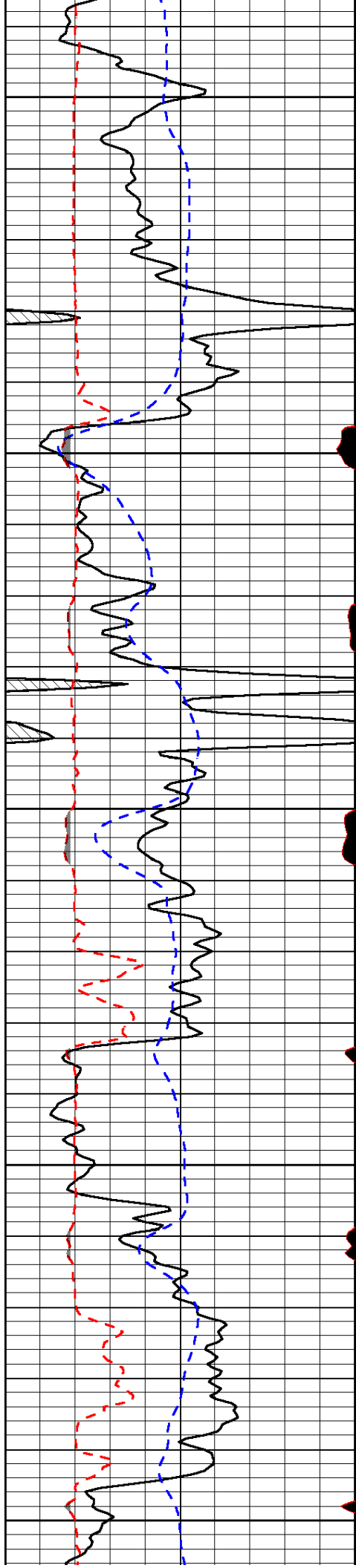
Database File: murfin\_031314hd.db  
 Dataset Pathname: DIL/murstk  
 Presentation Format: micro  
 Dataset Creation: Thu Mar 13 12:39:12 2014  
 Charted by: Depth in Feet scaled 1:240

0	Gamma Ray (GAPI)	150
6	MCAL (in)	16
2.875	Mud Cake (in)	7.875
-200	SP (mV)	0

0	Micro Inverse 1 X 1 (Ohm-m)	40
0	Micro Normal 2" (Ohm-m)	40
10000	Line Weight (lb)	0

LSPD  
(ft/min)





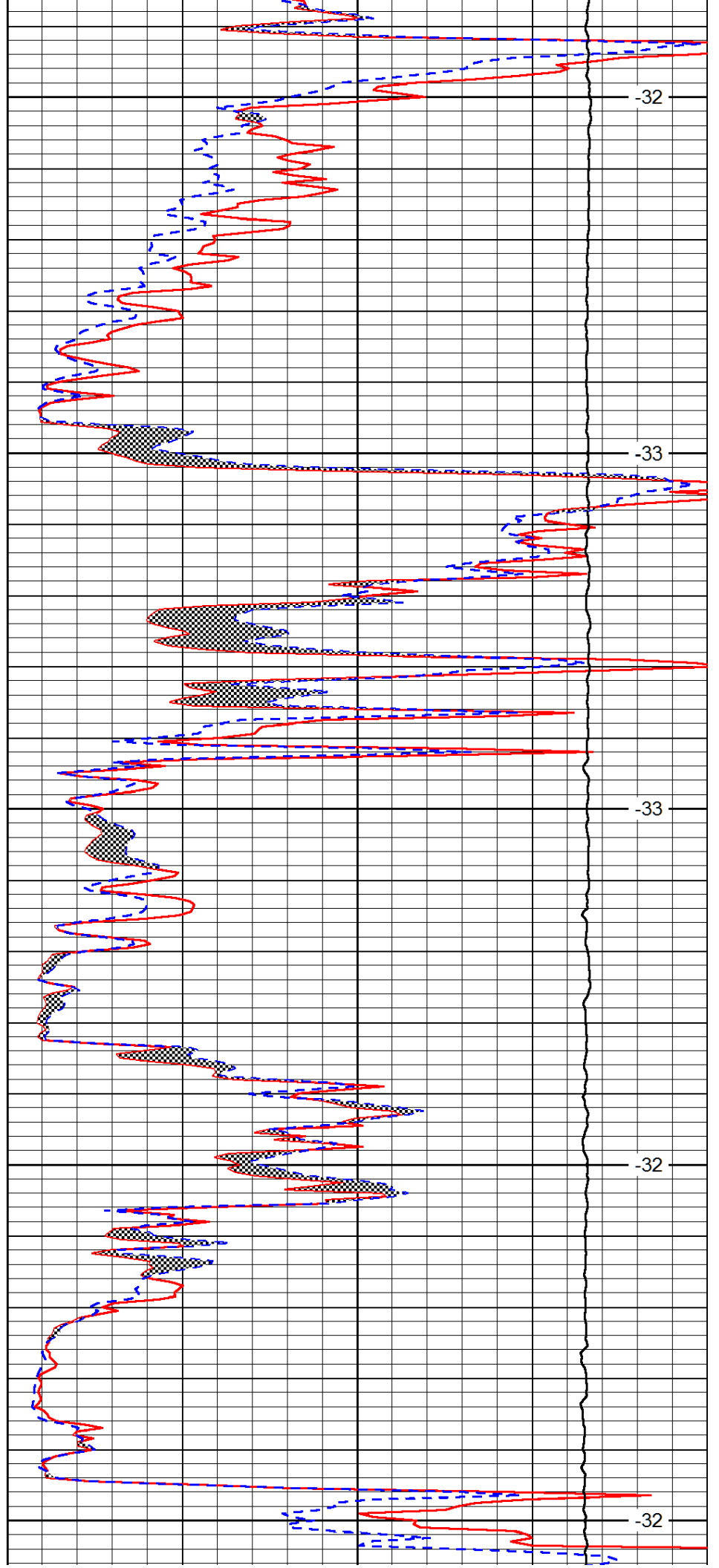
4050

4100

4150

4200

4250



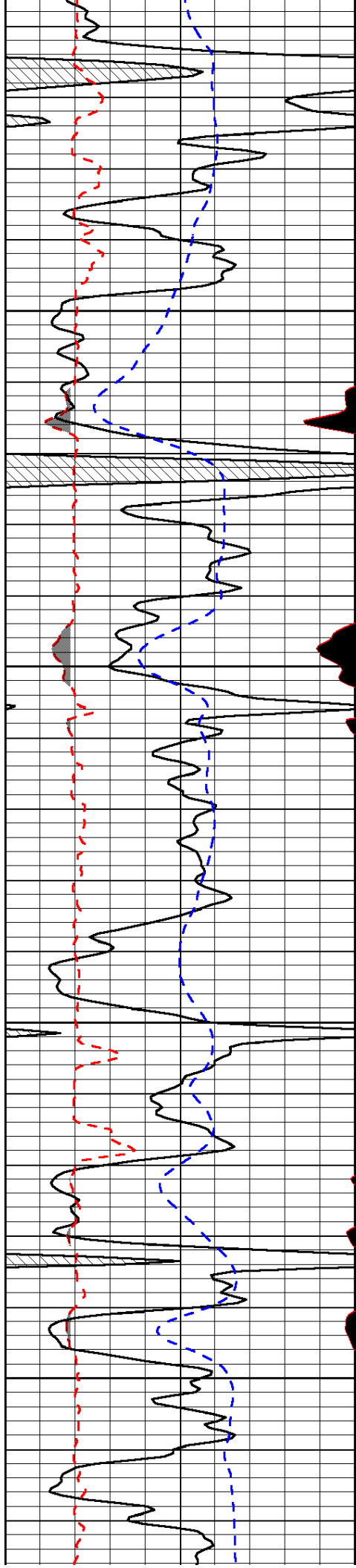
-32

-33

-33

-32

-32

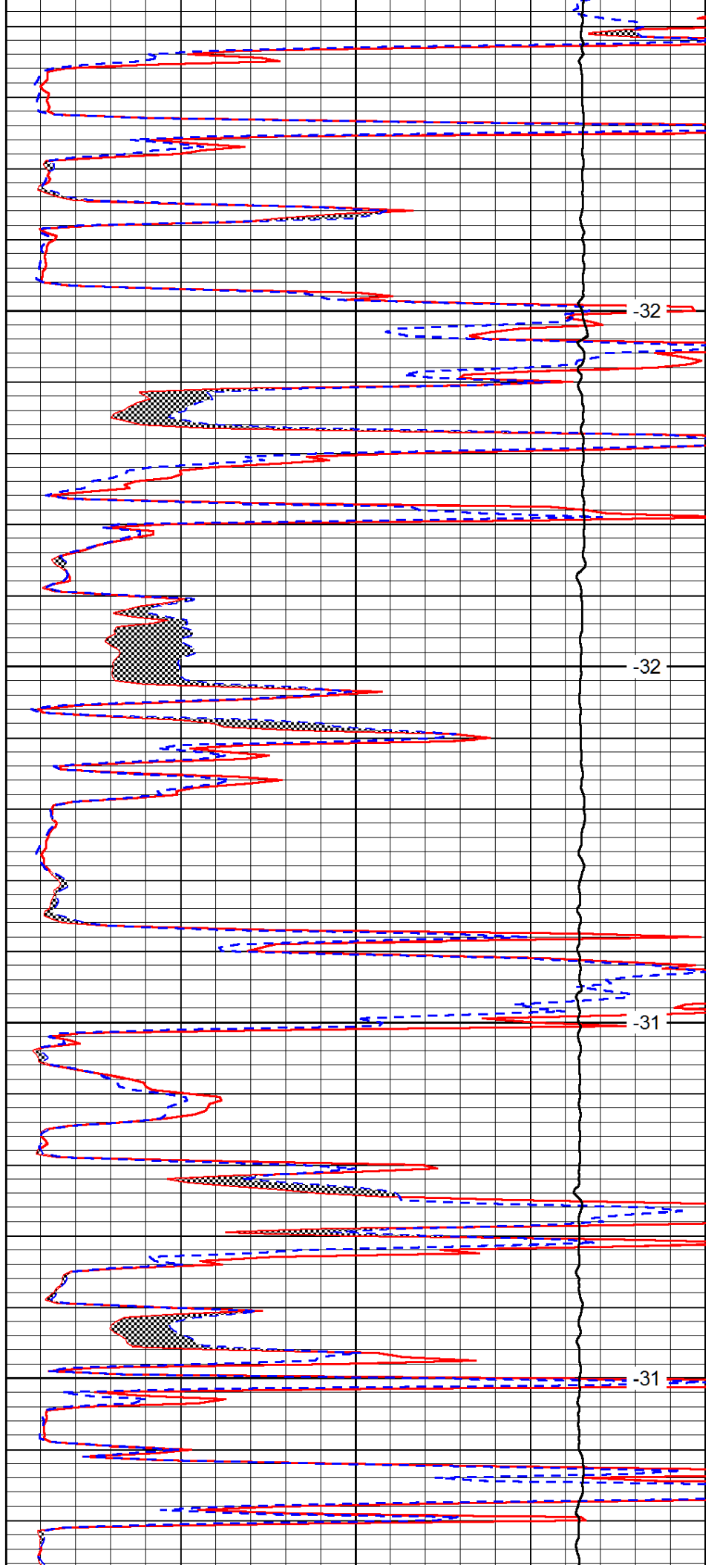


4300

4350

4400

4450

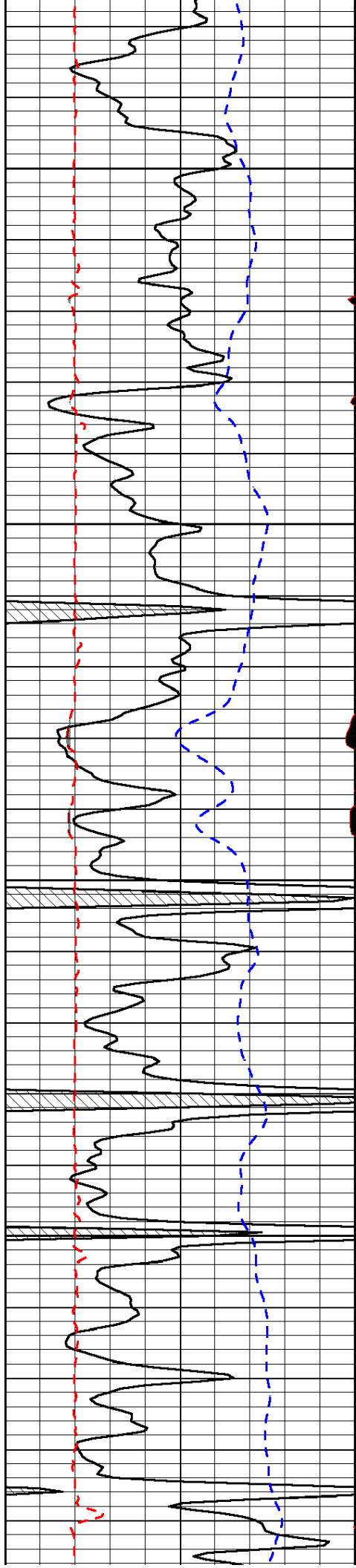


-32

-32

-31

-31

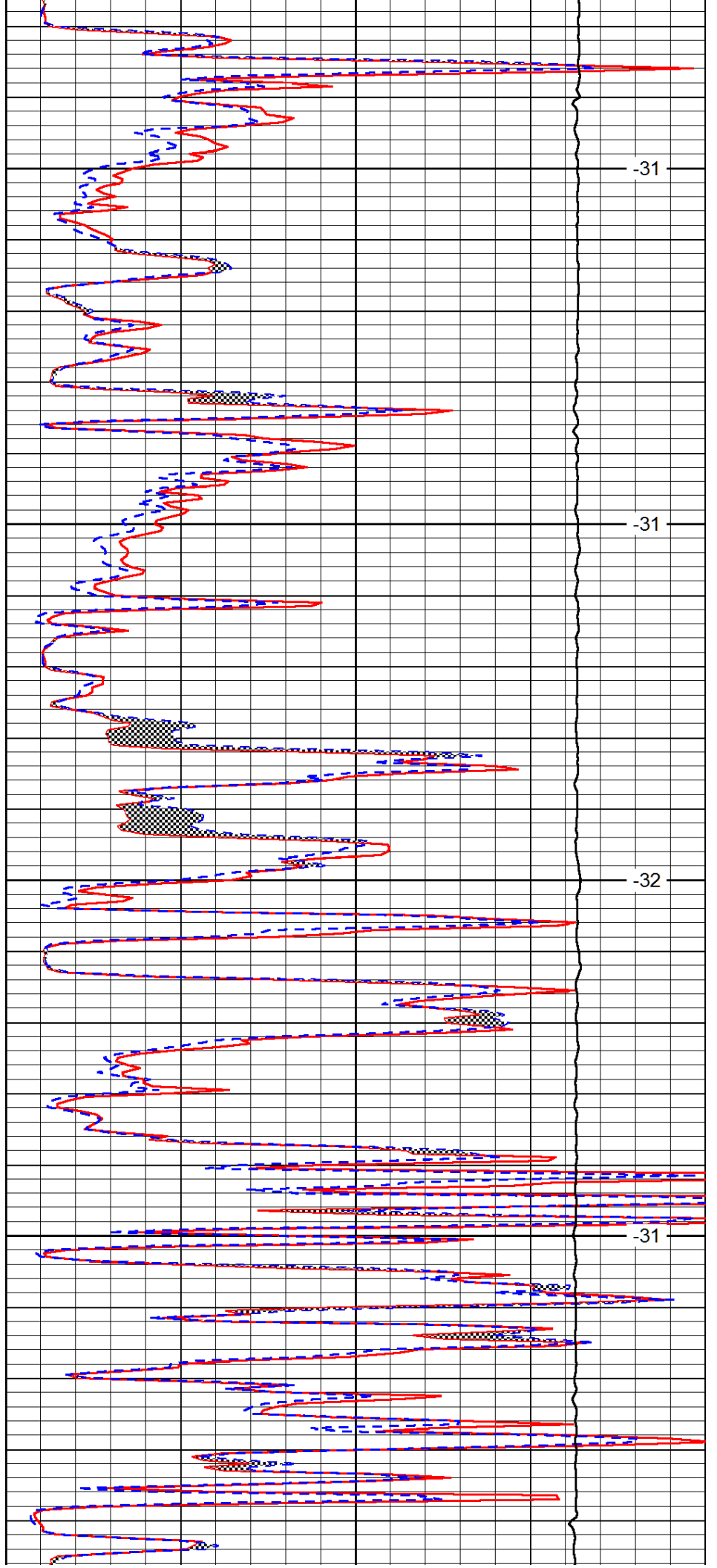


4500

4550

4600

4650

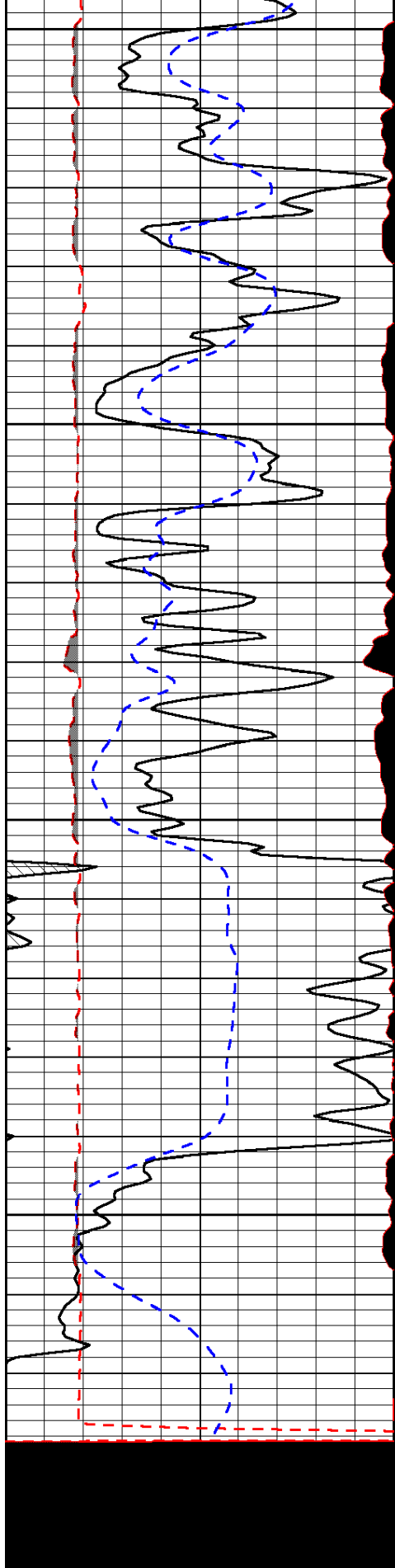


-31

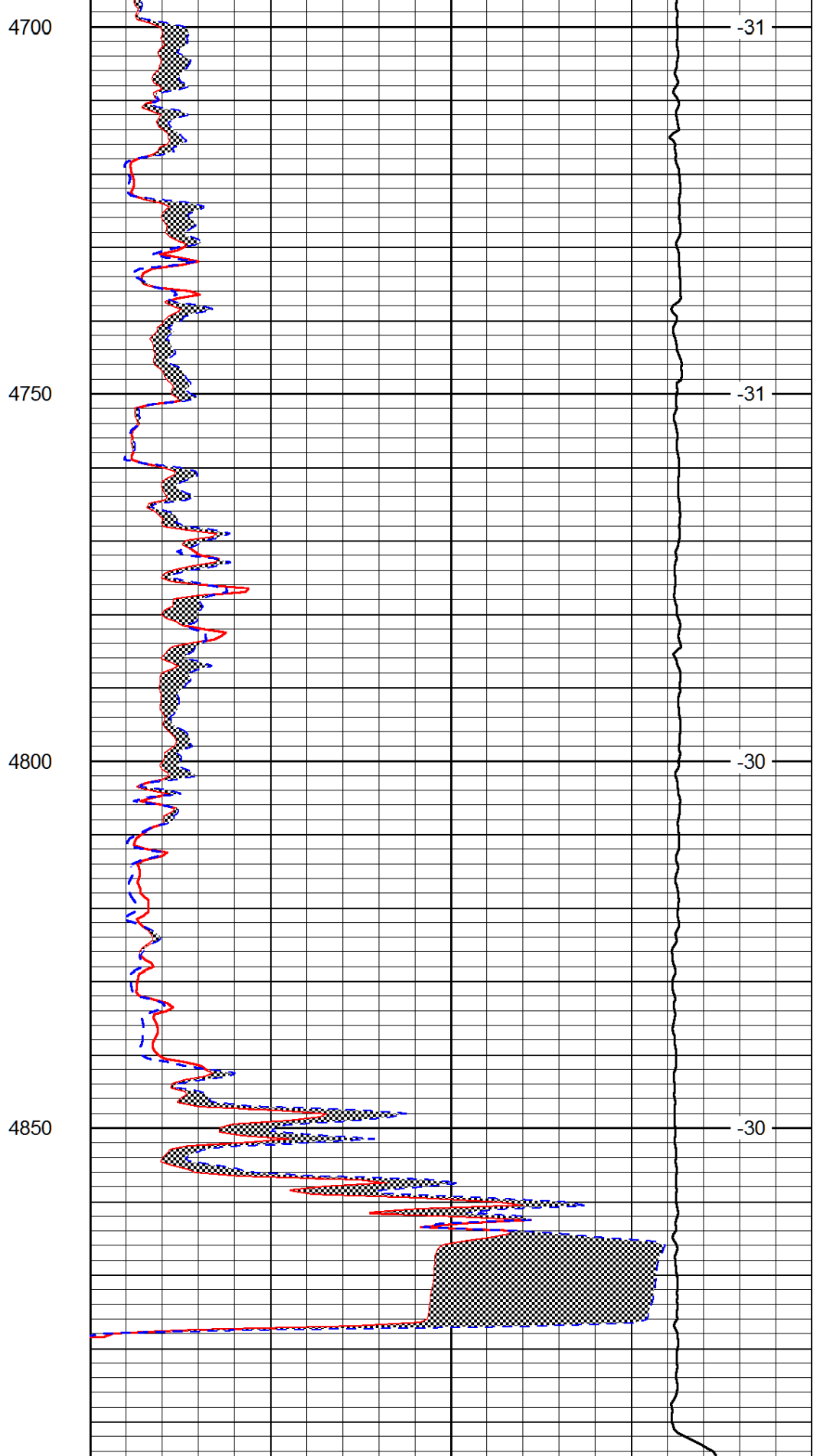
-31

-32

-31



0	Gamma Ray (GAPI)	150
6	MCAL (in)	16
2.875	Mud Cake (in)	7.875
-200	SP (mV)	0



0	Micro Inverse 1 X 1 (Ohm-m)	40
0	Micro Normal 2" (Ohm-m)	40
10000	Line Weight (lb)	0
	LSPD	(ft/min)

