



Pioneer Energy Services

## Dual Compensated Porosity Log

API No.	15-153-20992-00-00		
Company	Murfin Drilling Company, Inc.		
Well	Loker Trust # 1-1		
Field	Wildcat		
County	Rawlins		
State	Kansas		
Location	1320' FSL & 1980' FWL		
Sec: 1	Twp: 3 S	Rge: 36 W	
Other Services		Elevation	
DIL		K.B. 3254	
MEI/BHCS		D.F. 3249	
		G.L. 3249	

Permanent Datum	Ground Level	Elevation 3249
Log Measured From	Kelly Bushing	5 Ft. Above Perm. Datum
Drilling Measured From	Kelly Bushing	

Date	03-13-2014
Run Number	One
Type Log	CNL / CDL
Depth Driller	4890
Depth Logger	4892
Bottom Logged Interval	4871
Top Logged Interval	3850
Type Fluid In Hole	Chemical
Salinity, PPM CL	700
Density	9.4
Level	Full
Max. Rec. Temp. F	127
Operating Rig Time	5 1/2 Hours
Equipment -- Location	91 Hays
Recorded By	Y. Ruiz
Witnessed By	Jeff Christian

Borehole Record				Casing Record			
Run No.	Bit	From	To	Size	Wgt.	From	To
One	12.25	00	350	8.625	23#	00	350
Two	7.875	350	TD				

<<< Fold Here >>>

All interpretations are opinions based on inferences from electrical or other measurements and we cannot and do not guarantee the accuracy or correctness of any interpretation, and we shall not, except in the case of gross or willful negligence on our part, be liable or responsible for any loss, costs, damages, or expenses incurred or sustained by anyone resulting from any interpretation made by any of our officers, agents or employees. These interpretations are also subject to our general terms and conditions set out in our current Price Schedule.

### Comments

Thank you for using Log-Tech, Inc.  
(785) 625-3858

Atwood,  
West to 7 Rd, 2 North to R Rd, 1/2 West,  
North into

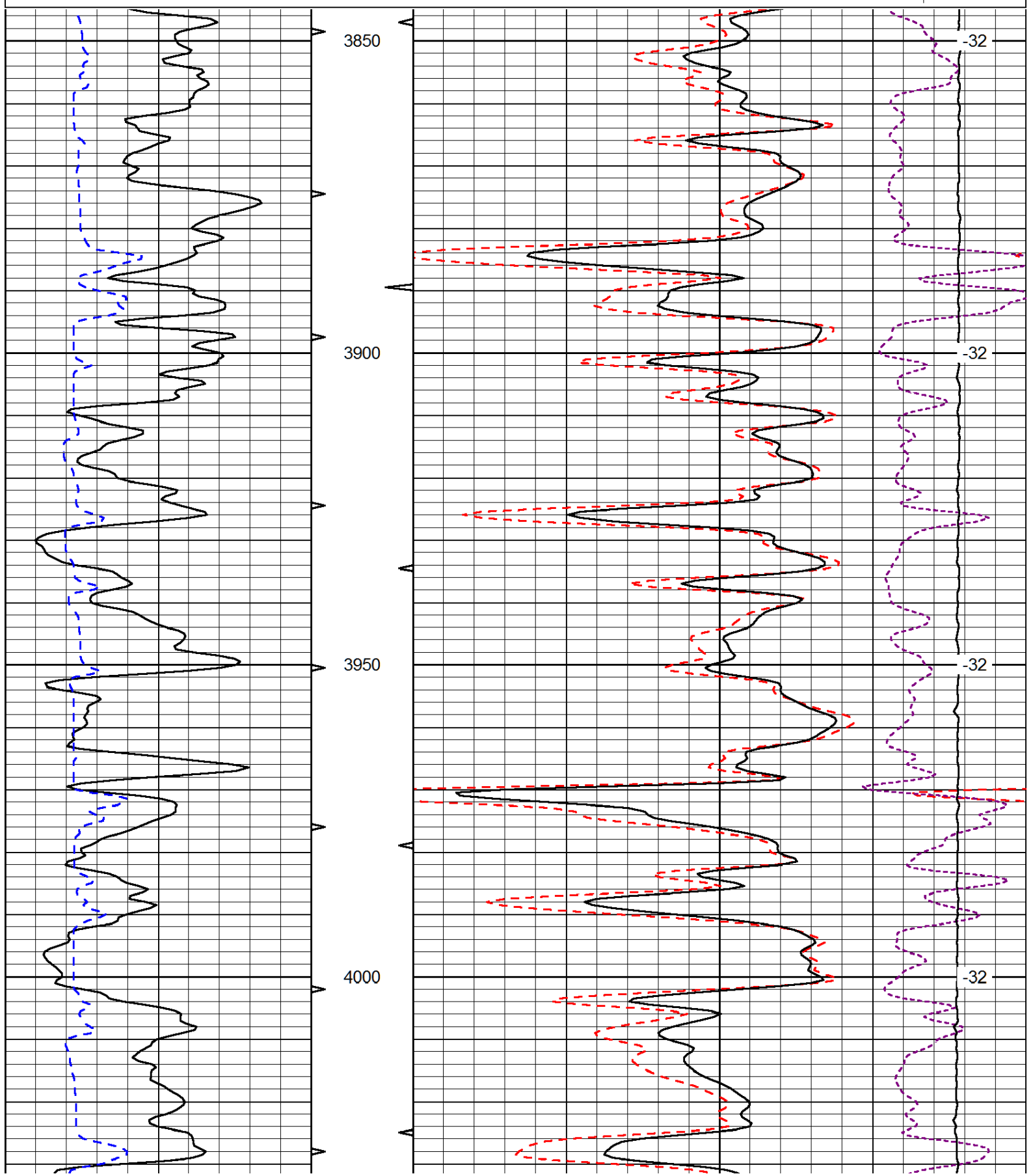
Database File: murfin\_031314hd.db  
 Dataset Pathname: DIL/murstk  
 Presentation Format: cdl  
 Dataset Creation: Thu Mar 13 12:39:12 2014  
 Charted by: Depth in Feet scaled 1:240

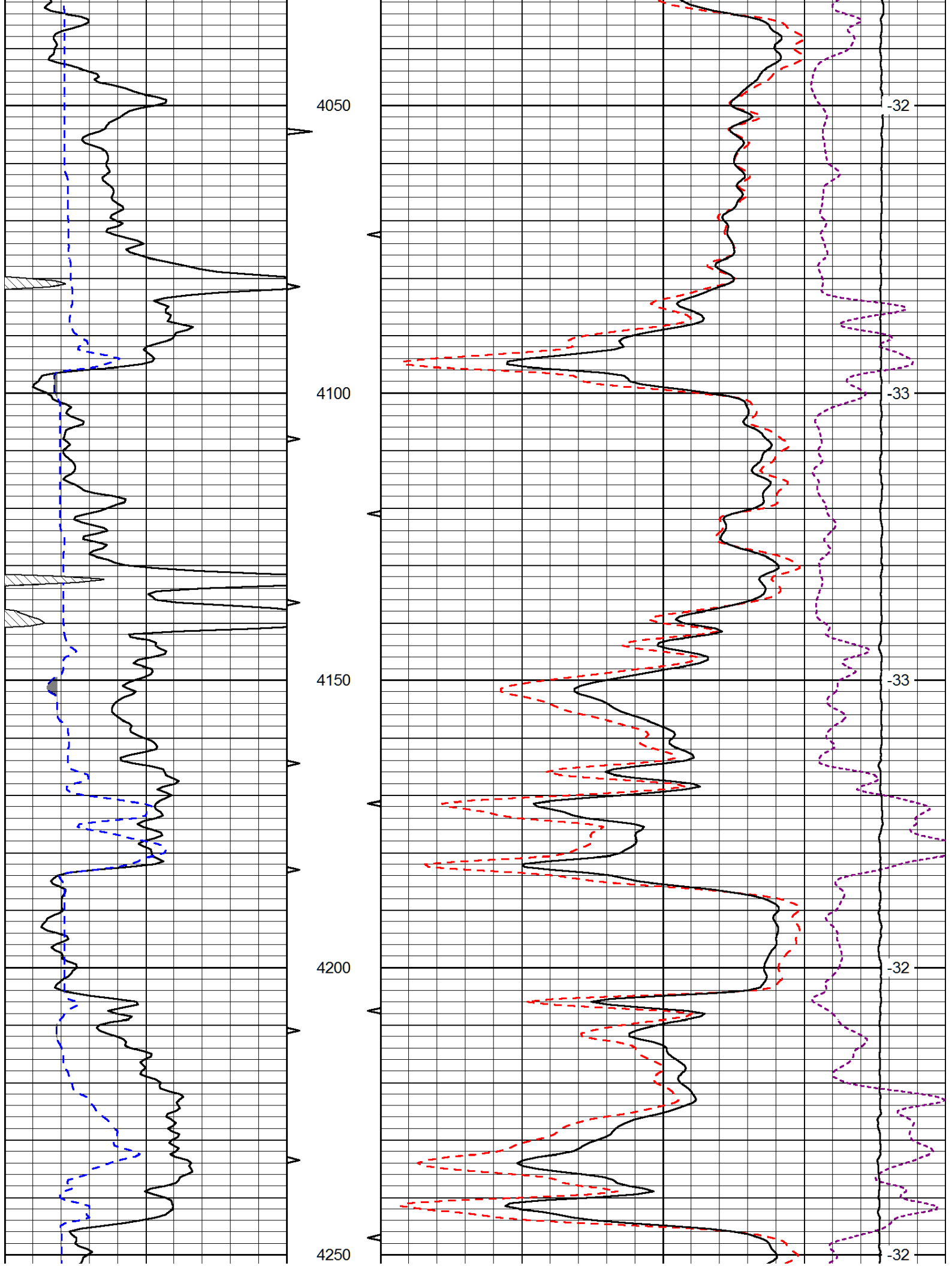
0	Gamma Ray (GAPI)	150
6	Caliper (in)	16

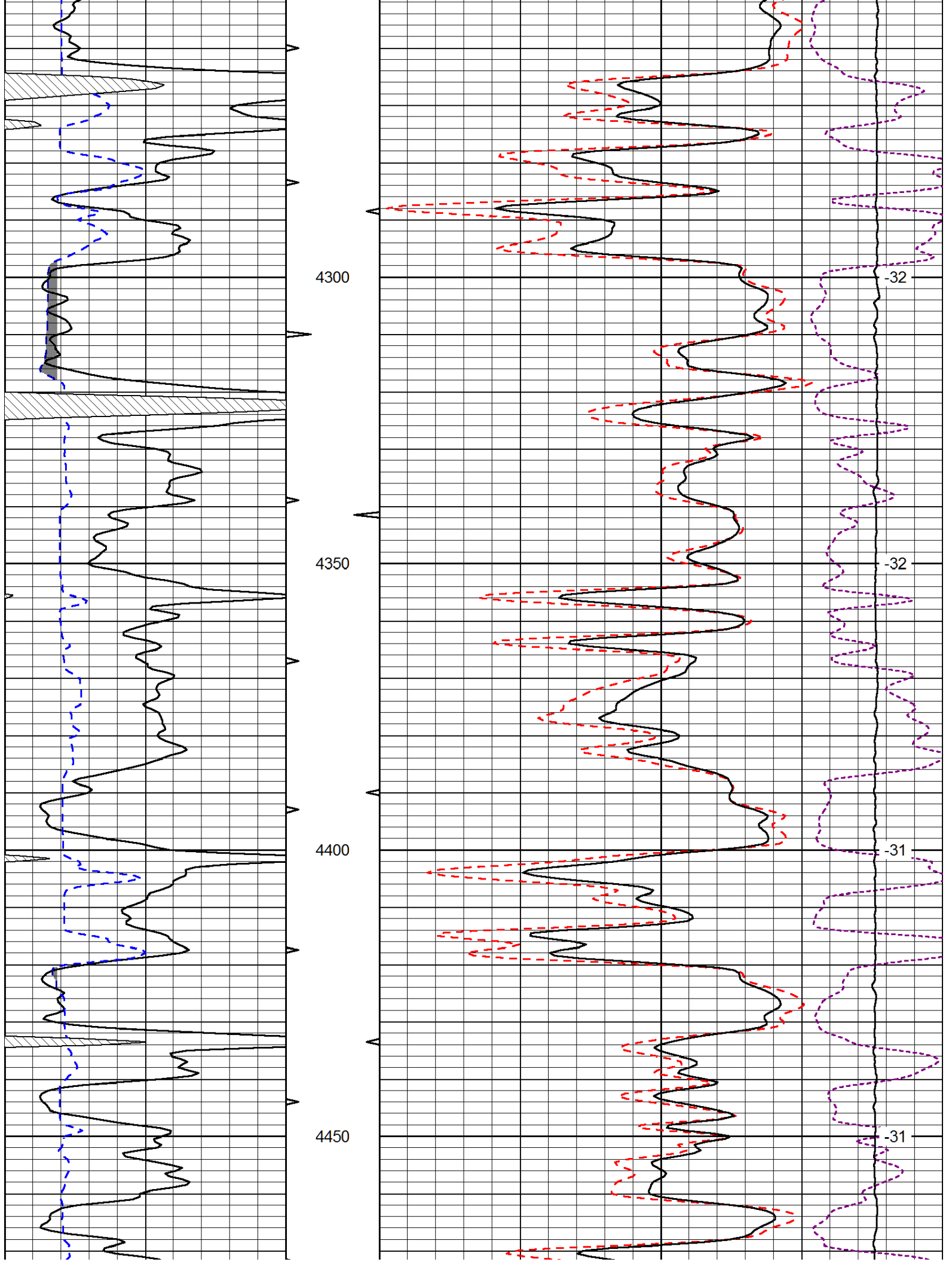
30	Compensated Density (pu)	-10
2	Bulk Density (g/cc)	3
15000	Line Tension (lb)	0

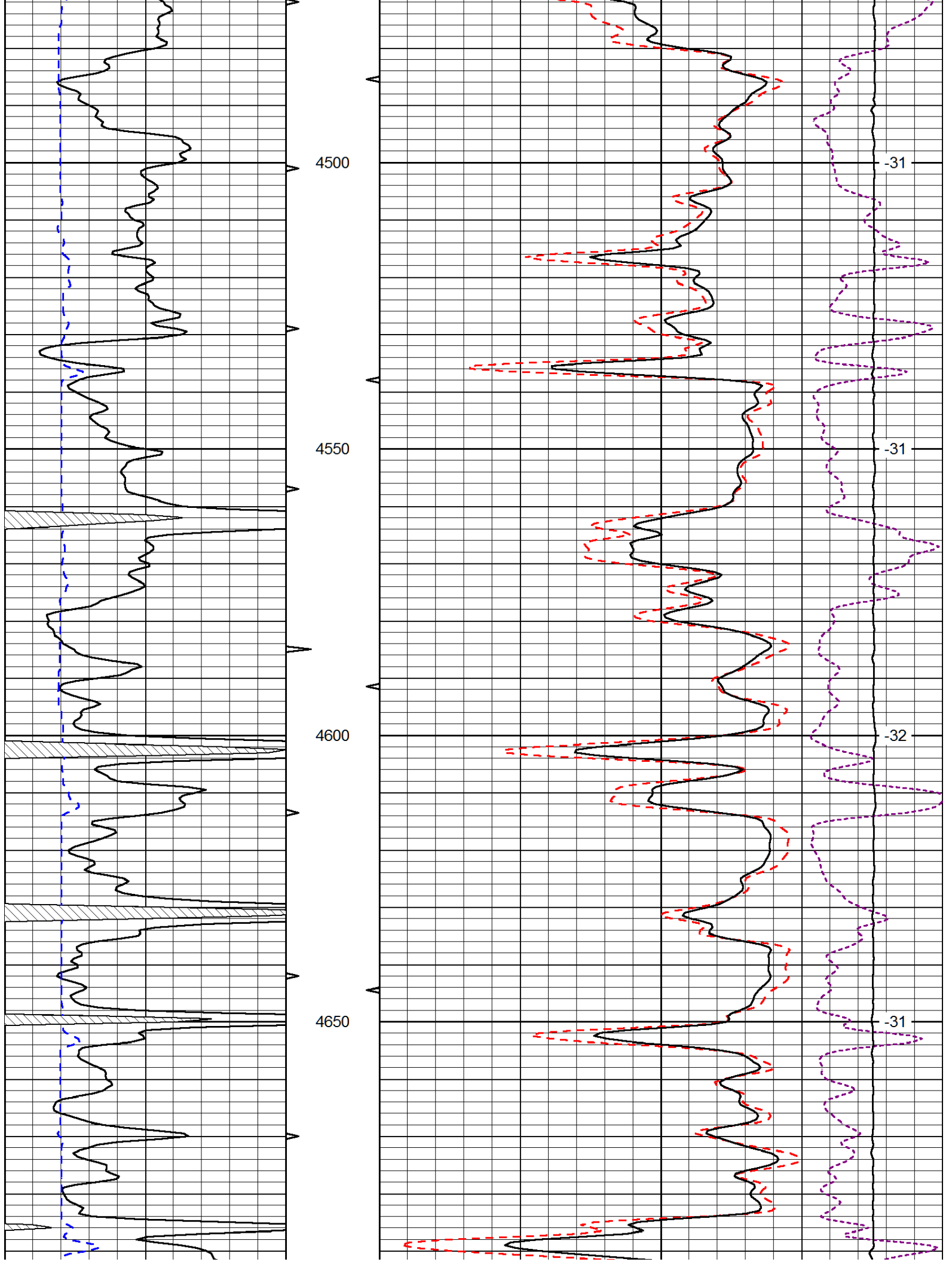
-0.25 Correction (g/cc) 0.25

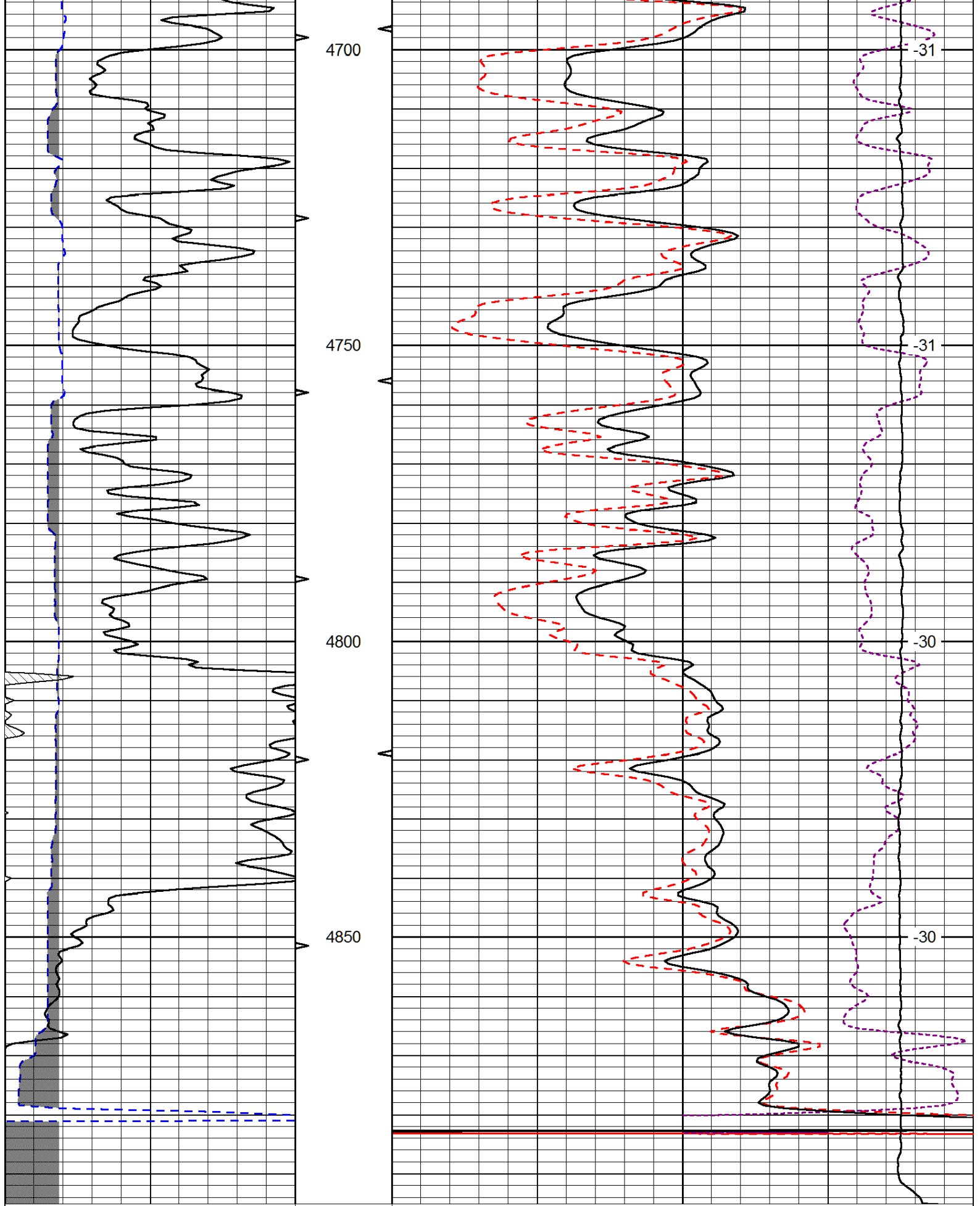
LSPD  
(ft/min)











0 Gamma Ray (GAPI) 150

6 Caliper (in) 16

30 Compensated Density (pu) -10

2 Bulk Density (g/cc) 3

15000 Line Tension (lb) 0

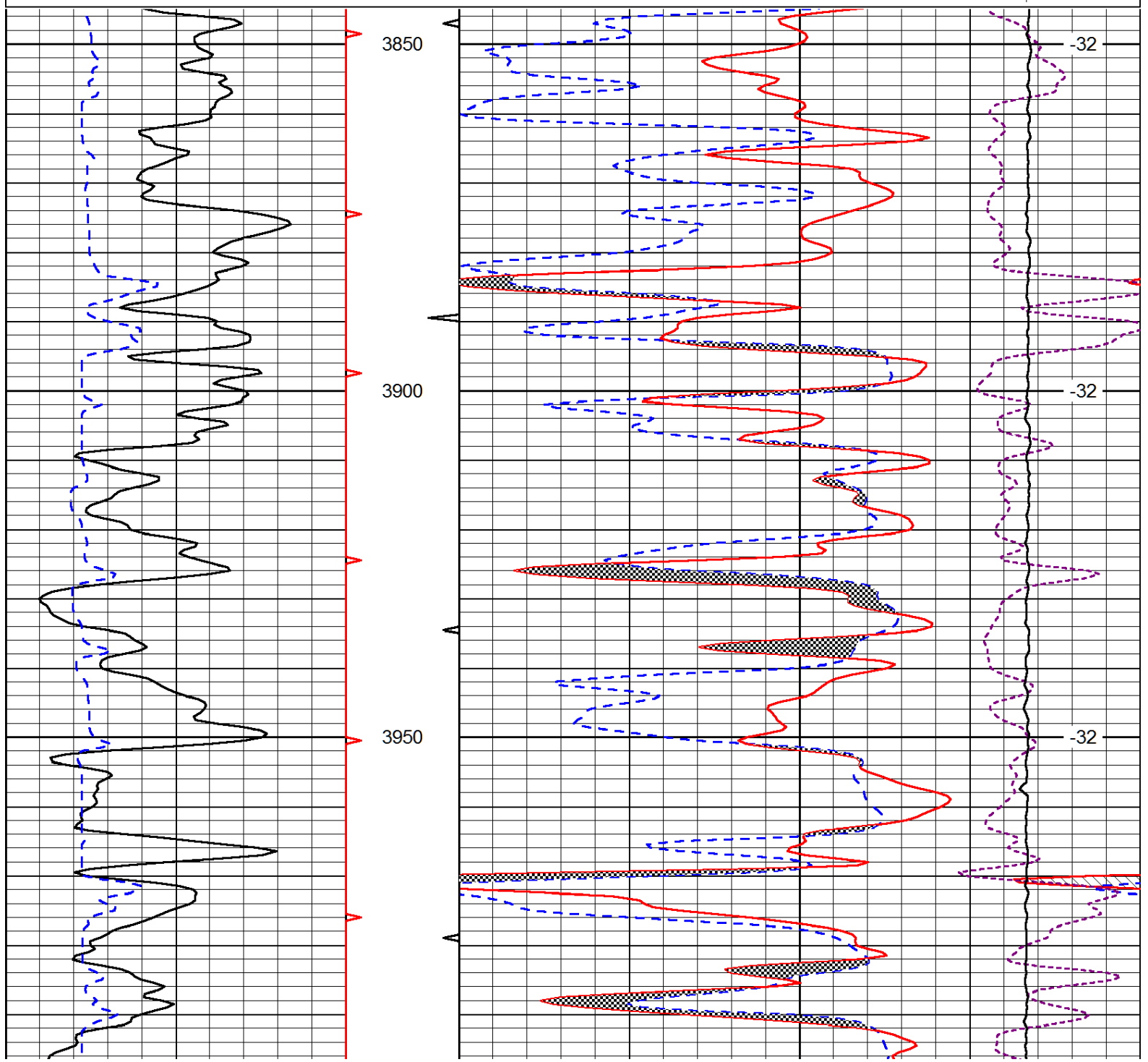
0.25 Correction (g/cc) 0.25

-0.25 Correction (g/cc) 0.25

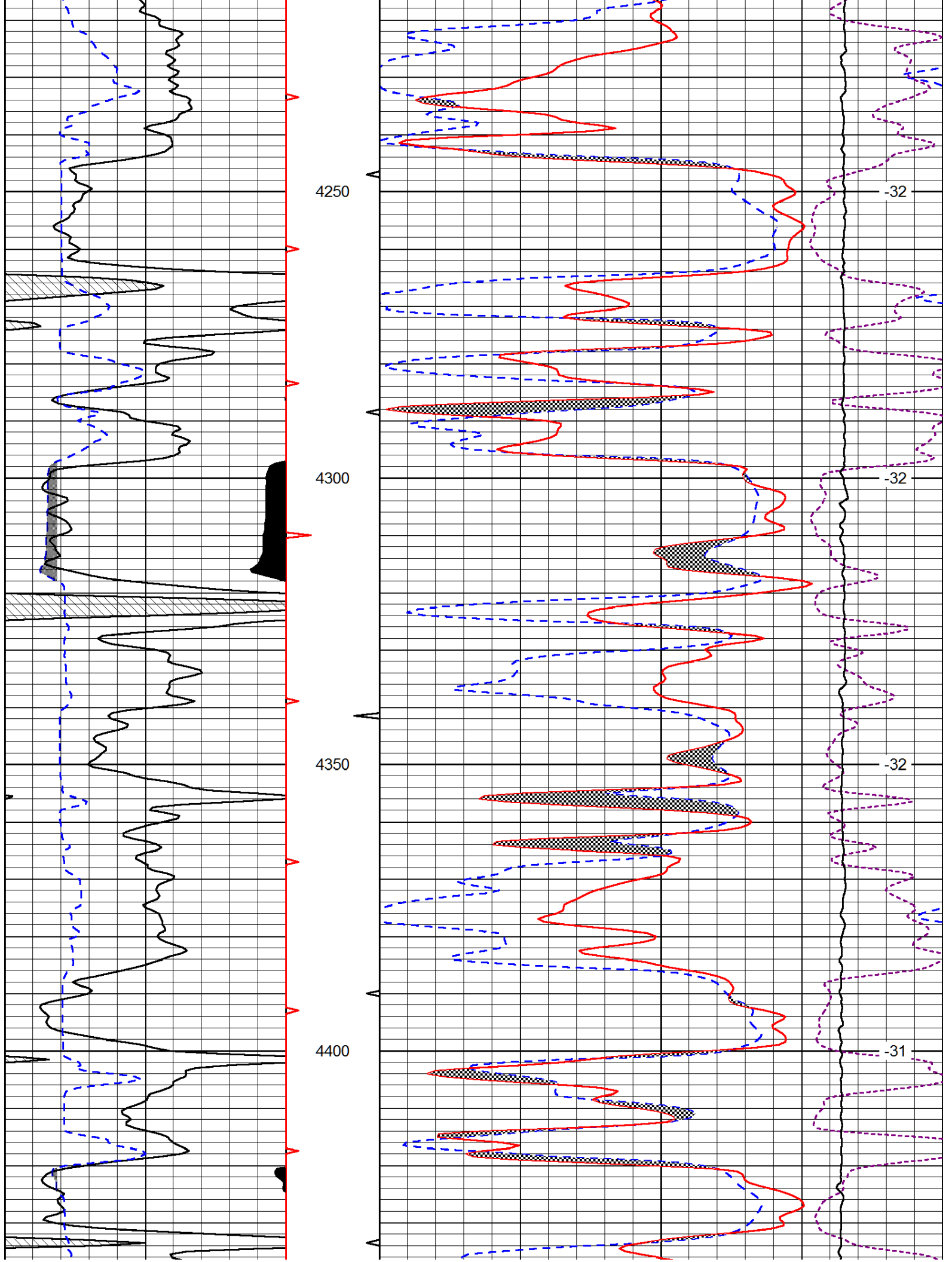
LSPD  
(ft/min)

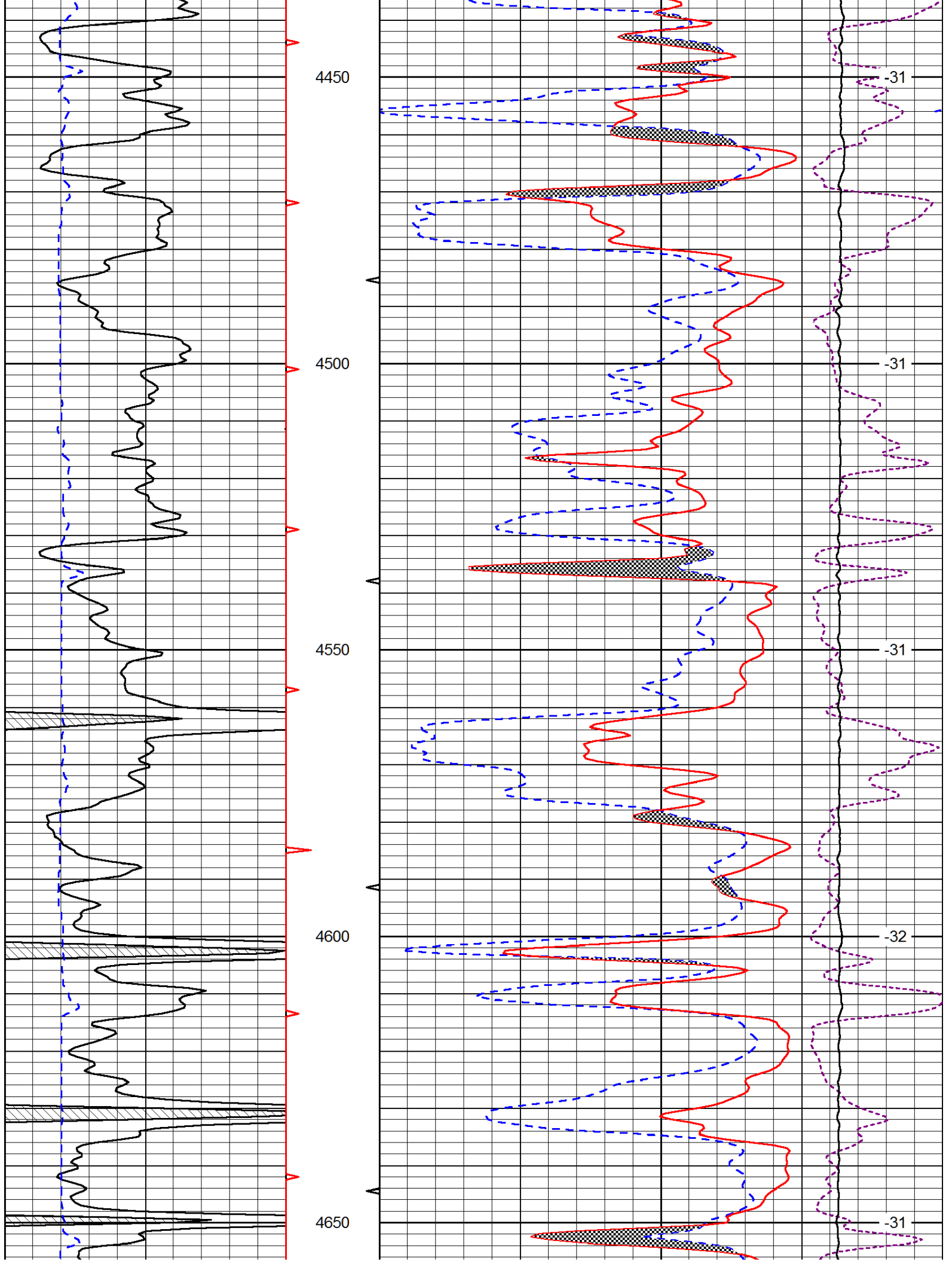
Database File: murfin\_031314hd.db  
Dataset Pathname: DIL/murstk  
Presentation Format: cndlspec  
Dataset Creation: Thu Mar 13 12:39:12 2014  
Charted by: Depth in Feet scaled 1:240

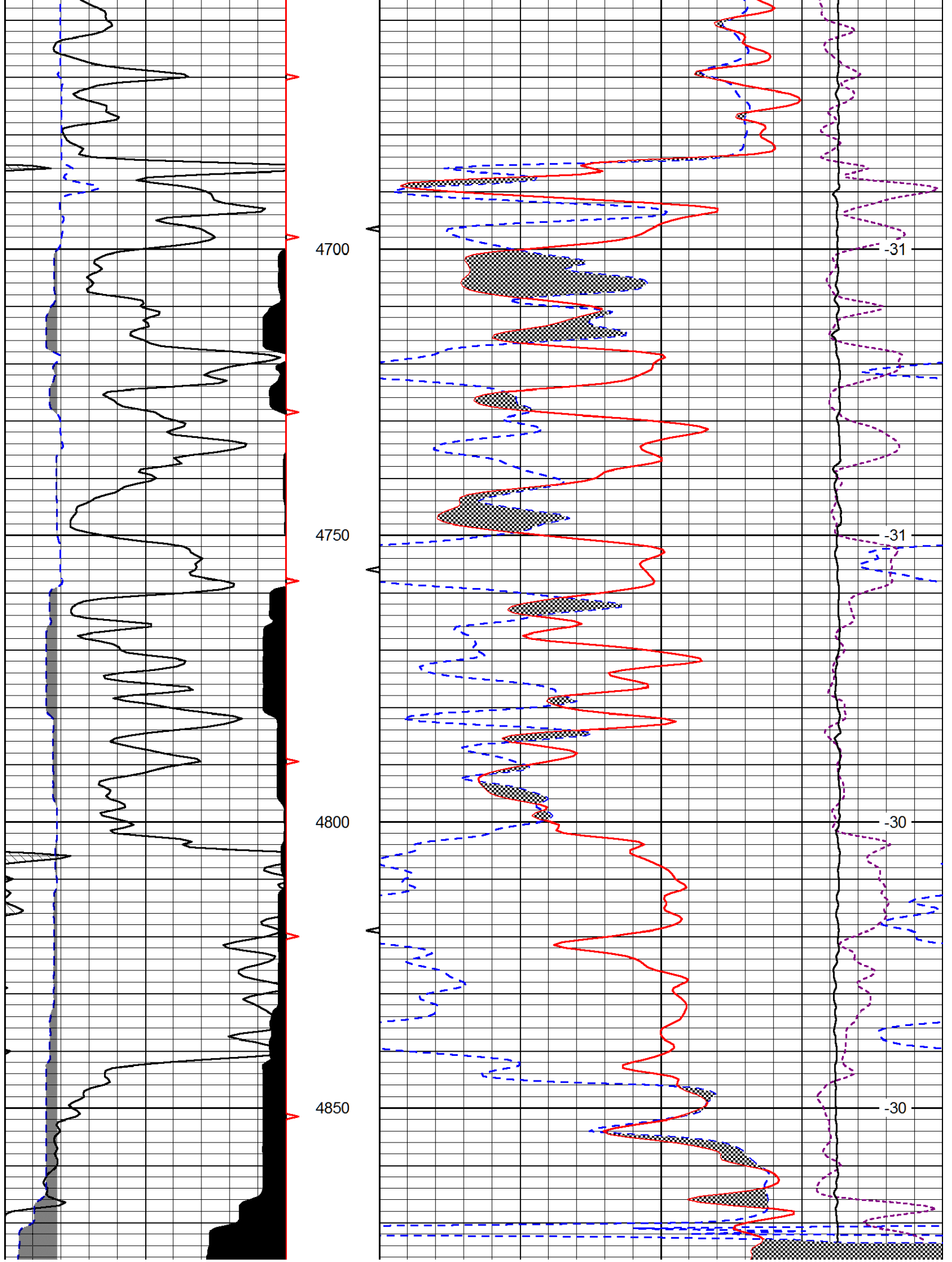
0	Gamma Ray (GAPI)	150	30	CNPOR (pu)	-10
6	Caliper (in)	16	30	Compensated Density (2.71 ma) (pu)	-10
			10000	Line Tension (lb)	0
				-0.25 Correction (g/cc)	0.25
					LSPD (ft/min)

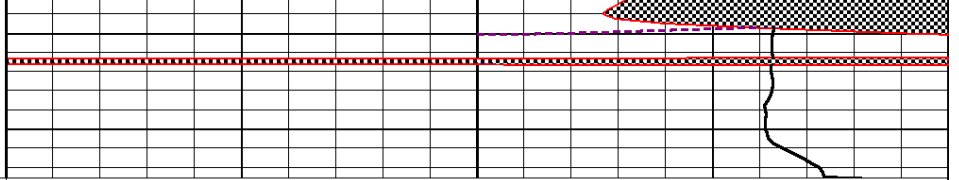
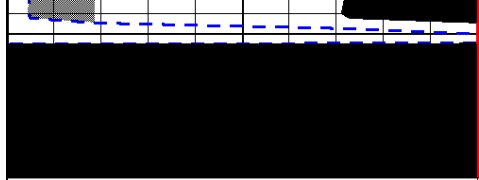












0	Gamma Ray (GAPI)	150
6	Caliper (in)	16

30	CNPOR (pu)	-10
30	Compensated Density (2.71 ma) (pu)	-10
10000	Line Tension (lb)	0

-0.25	Correction (g/cc)	0.25
	LSPD (ft/min)	