



MIDWEST SURVEYS
 LOGGING - PERFORATING - CONSULTING SERVICES
 P.O. Box 68, Osawatomie, KS 66064
 913 / 755 - 2128

GAMMA RAY / NEUTRON / CCL

File No. Company Kansas Resources Exploration
 Well Hollinger No. KR-36
 Field Paola - Rantoul
 County Miami State Kansas

Location 825' FSL & 2805' FEL
 SE-NE-SE-SW
 Other Services Perforate

Sec. 31 Typ. 10s Rge. 22a
 Permanent Datum GL Elevation 1090'
 Log Measured From GL D.F. NA
 Drilling Measured From GL E.L. 1090'

Date 11-07-2014
 Run Number One
 Depth Drier 761.0
 Depth Logger 721.2
 Bottom Logged Interval 720.2
 Top Log Interval 20.0
 Fluid Level Full

Type Fluid Water
 Density / Viscosity NA
 Salinity - PPM Cl NA
 Max. Recorded Temp NA
 Estimated Cement Top 0.0
 Equipment No. Location 107 Osawatomie
 Recorder By Steve Wandisch
 Witnessed By Brad Kraemer

BORE-HOLE RECORD				CASING RECORD			
RUN	BIT	FROM	TO	SIZE	WGT.	FROM	TO
No.							
One	9.875"	0.0	21.92	7.00"	14.0 #	0.0	20.0
Two	5.875"	21.92	761.0	2.875"	6.5 #	0.0	752.75
				Baffle	Set	At	727.55

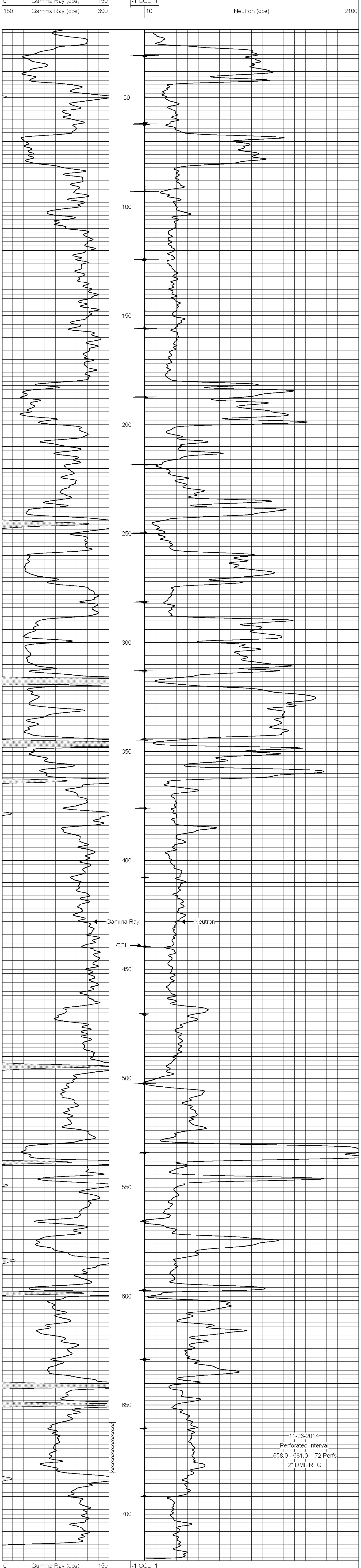
<< Fold Here >>>

All interpretations are opinions based on inferences from electrical or other measurements and we cannot and do not guarantee the accuracy or correctness of any interpretation, and we shall not, except in the case of gross or willful negligence on our part, be liable or responsible for any loss, costs, damages, or expenses incurred or sustained by anyone resulting from any interpretation made by any of our officers, agents or employees. These interpretations are also subject to our general terms and conditions set out in our current Price Schedule.

Comments

Drilling Contractor :
 Utah Oil, LLC

Database File: hollinger 36kr.db
 Dataset Pathname: pass1
 Presentation Format: gr-n-ccl
 Dataset Creation: Fri Nov 07 15:10:40 2014 by Log SCH 111116
 Charted by: Depth in Feet scaled 1:240



11-26-2014
 Perforated Interval
 658.0 - 681.0 72 Perfs
 2" DML RTG

0 Gamma Ray (cps) 150
 150 Gamma Ray (cps) 300

-1 CCL 1

10 Neutron (cps) 2100