



MIDWEST SURVEYS
 LOGGING - PERFORATING - CONSULTING SERVICES
 P.O. Box 68, Osawatomie, KS 66064
 913 / 755 - 2128

GAMMA RAY / NEUTRON / CCL

File No. Company Kansas Resources Exploration

Well Cartwright No. KR1-25

Field Paola - Rantoul

County Miami State Kansas

Location 3070' FSL & 1250' FEL
 NW-SW-SE-NE

Sec. 23 Twp. 18s Rge. 21e
 Permanent Datum GL Elevation 912'
 Log Measured From GL
 Drilling Measured From GL

Date 11-20-2014

Run Number One
 Depth Driller 582.0

Depth Logger 538.0

Bottom Logged Interval 537.0
 Top Log Interval 20.0

Fluid Level Full

Type Fluid Water

Density / Viscosity NA
 Salinity - PPM Cl NA
 Max Recorded Temp NA

Estimated Cement Top 0.0
 Equipment No. 102 Location Osawatimie
 Recorded By Gary Windisch
 Witnessed By Brad Kramer

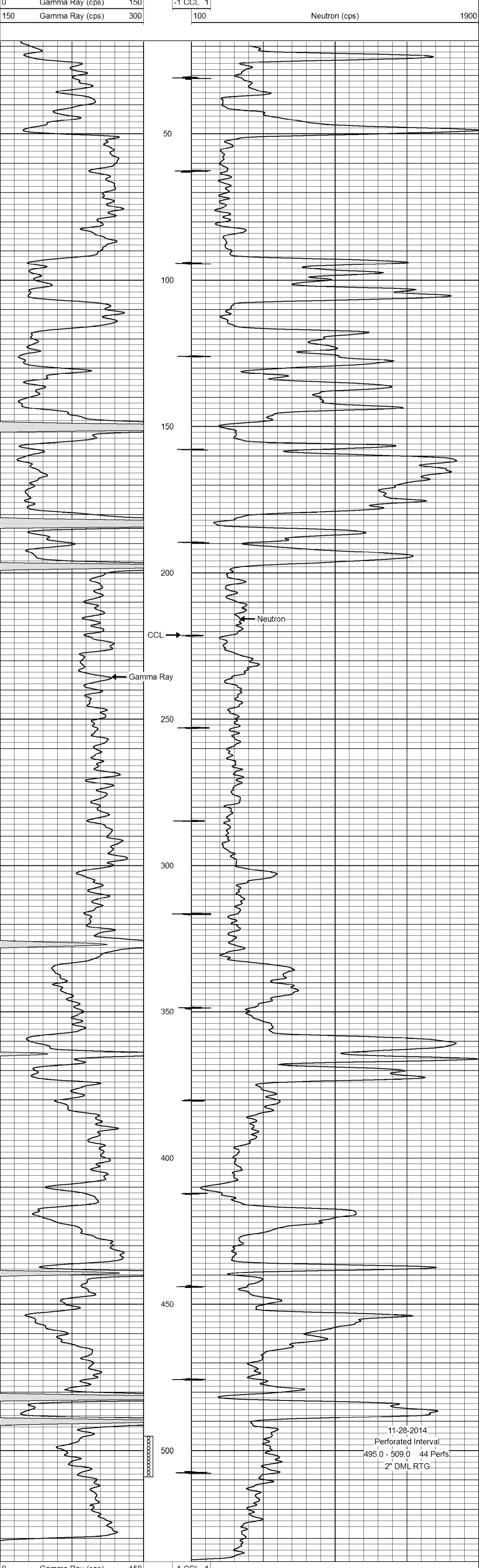
| BORE-HOLE RECORD | | | | CASING RECORD | | | |
|------------------|--------|-------|-------|---------------|-------|------|--------|
| RUN No. | BIT | FROM | TO | SIZE | WGT. | FROM | TO |
| One | 9.875" | 0.0 | 22.45 | 7.00" | 14.0# | 0.0 | 22.45 |
| Two | 5.875" | 22.45 | 592.0 | 2.875" | 6.5# | 0.0 | 570.30 |
| | | | | Baffle | Set | At | 538.80 |

<<< Fold Here >>>
 All interpretations are opinions based on inferences from electrical or other measurements and we cannot and do not guarantee the accuracy or correctness of any interpretation, and we shall not, except in the case of gross or willful negligence on our part, be liable or responsible for any loss, costs, damages, or expenses incurred or sustained by anyone resulting from any interpretation made by any of our officers, agents or employees. These interpretations are also subject to our general terms and conditions set out in our current Price Schedule.

Comments

Drilling Contractor :
 McGown Drilling, Inc.

Database File: cartwright25kri.db
 Dataset Pathname: pass1
 Presentation Format: gr-n-ccl
 Dataset Creation: Thu Nov 20 14:43:13 2014 by Log SCH 111116
 Charted by: Depth in Feet scaled 1:240



| BORE-HOLE RECORD | | | | CASING RECORD | | | |
|------------------|--------|-------|-------|---------------|-------|------|--------|
| RUN No. | BIT | FROM | TO | SIZE | WGT. | FROM | TO |
| One | 9.875" | 0.0 | 22.45 | 7.00" | 14.0# | 0.0 | 22.45 |
| Two | 5.875" | 22.45 | 592.0 | 2.875" | 6.5# | 0.0 | 570.30 |
| | | | | Baffle | Set | At | 538.80 |