



MIDWEST SURVEYS
 LOGGING - PERFORATING - CONSULTING SERVICES
 P.O. Box 68, Osawatomie, KS 66064
 913.755.2128

GAMMA RAY / NEUTRON / CCL

File No.

Company Kansas Resources Exploration

Well Harra No. KR-30

Field Paola / Rantoul

County Miami State Kansas

Location 2805' FSL & 3465' FEL

SE-SW-SE-NW

Sec. 13 Twp. 17s Rge. 22e

Permanent Datum GL Elevation 1017'

Log Measured From GL

Drilling Measured From GL

Other Services
Perforate

Date 11-17-2014

Run Number One

Depth Driller 682.0

Depth Logger 479.0

Bottom Logged Interval 478.0

Top Log Interval 20.0

Fluid Level Full

Fluid Type Water

Density / Viscosity NA

Salinity - PPM Cl NA

Max Recorded Temp NA

Estimated Cement Top 0.0

Equipment No. Location 102 Osawatomie

Recorded By Gary Wandsch

Witnessed By Brad Kramer

BORE-HOLE RECORD				CASING RECORD			
RUN No.	BIT	FROM	TO	SIZE	WGT.	FROM	TO
One	9.875"	0.0	22.50	7.00"	14.0 #	0.0	22.50
Two	5.875"	22.50	682.0	2.875"	6.5 #	0.0	511.20
				Baffle	Set	At	479.55

<<< Fold Here >>>

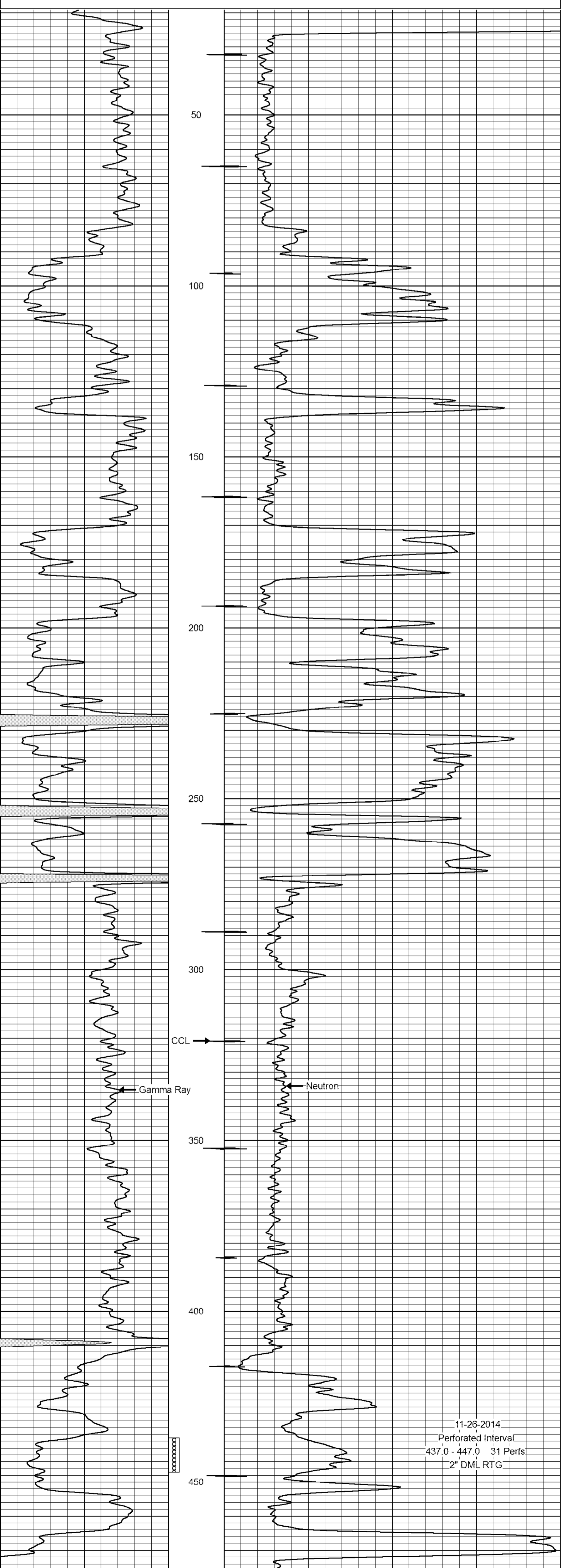
All interpretations are opinions based on inferences from electrical or other measurements and we cannot and do not guarantee the accuracy or correctness of any interpretation, and we shall not, except in the case of gross or willful negligence on our part, be liable or responsible for any loss, costs, damages, or expenses incurred or sustained by anyone resulting from any interpretation made by any of our officers, agents or employees. These interpretations are also subject to our general terms and conditions set out in our current Price Schedule.

Comments

Drilling Contractor :
Utah Oil, LLC.

Database File: harra30kr.db
 Dataset Pathname: pass1
 Presentation Format: gr-n-ccl
 Dataset Creation: Mon Nov 17 14:35:17 2014 by Log SCH 111116
 Charted by: Depth in Feet scaled 1:240

0	Gamma Ray (cps)	150	-1 CCL 1				
150	Gamma Ray (cps)	300	100	Neutron (cps)			1900



0	Gamma Ray (cps)	150	-1 CCL 1				
150	Gamma Ray (cps)	300	100	Neutron (cps)			1900