



MIDWEST SURVEYS
 LOGGING - PERFORATING - CONSULTING SERVICES
 P.O. Box 88, Osawatomie, KS 66064
 913 / 755 - 2128

GAMMA RAY / NEUTRON / CCL

File No.

Company: **Birk Petroleum**
 Well: **Jerry Murray "B" No.-12**
 Field: **Crandall North**
 County: **Coffey** State: **Kansas**

Location: **2805 FSL & 825 FEL**

Other Services: **Perforate**

Sec. 36
 Permit Datum: **GL** Elevation: **1055'**
 Log Measured From: **GL** K/B NA
 Drilling Measured From: **GL** D/F NA
 Date: **13-08-2014** GL D/F 1055'

Run Number: **One**

Depth Driller: **1132.0**

Depth Logger: **1116.8**

Bottom Logged Interval: **1115.8**

Top Log Interval: **20.0**

Fluid Level: **Full**

Type Fluid		Density / Viscosity		Water	
Salinity - PPM Cl		NA		NA	
Max Recorded Temp		NA		NA	
Estimated Cement Top		0.0		NA	
Equipment No.		Location		102 Casuarine	
Recorded by		Gary Winstead			
Witnessed by		Brian Birk			
BONE-HOLE RECORD					
R/N	BIT	TO	SIZE	WGT	FROM
One	9.875"	40.0	7.00"	17.0 #	0.0
Two	6.25"	1132.0	2.875"	6.5 #	0.0
		40.0			1127.0

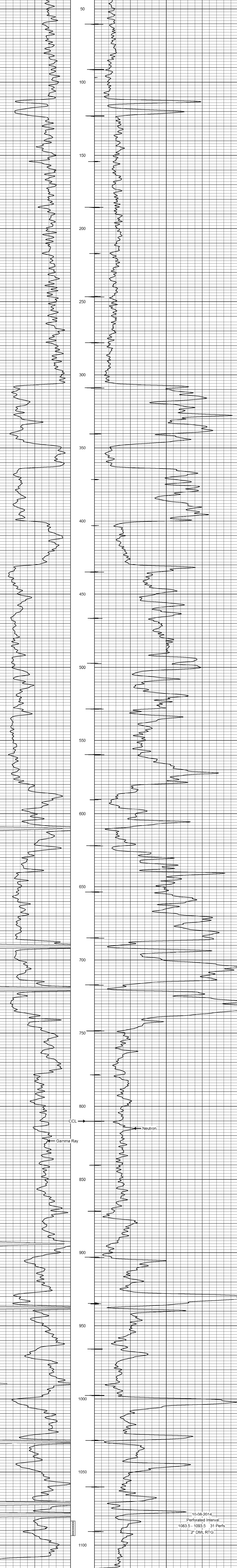
<<< Fold Here >>>

All interpretations are opinions based on inferences from electrical or other measurements and we cannot and do not guarantee the accuracy or correctness of any interpretation, and we shall not, except in the case of gross or willful negligence on our part, be liable or responsible for any loss, costs, damages, or expenses incurred or sustained by anyone resulting from any interpretation made by any of our officers, agents or employees. These interpretations are also subject to our general terms and conditions set out in our current Price Schedule.

Comments

Drilling Contractor :
Birk Petroleum

Database File: murray12b.db
 Dataset Pathname: pass1
 Presentation Format: gr-n-ccl
 Dataset Creation: Wed Oct 08 14:11:34 2014 by Log SCH 111116
 Charted by: Depth in Feet scaled 1:240



10-08-2014
 Perforated Interval
 1083.5 - 1093.5 31 Perfs
 2" DML RTG