



Pioneer Energy Services

Dual Induction Log

API No.	15-065-24072-00-00	
Company	McElvain Energy, Inc.	
Well	Herman #15-7	
Field	Faul Northeast	
County	Graham	State
Location	2136' FNL & 2144' FEL	
Sec: 15	Twp: 10S	Rge: 22W
Permanent Datum	Ground Level	Elevation 2269
Log Measured From	Kelly Bushing	10 Ft. Above Perm. Datum
Drilling Measured From	Kelly Bushing	
Other Services	CNL/CDL MEL	
Elevation	K.B. 2279 D.F. 2269 G.L. 2269	

Date	12/5/2014
Run Number	One
Depth Driller	3955
Depth Logger	3955
Bottom Logged Interval	3954
Top Log Interval	250
Casing Driller	8.625 @ 294
Casing Logger	293
Bit Size	7.875
Type Fluid in Hole	Chemical
Salinity, ppm CL	1200
Density / Viscosity	9.3 55
pH / Fluid Loss	10.5 7.6
Source of Sample	Flowline
Rm @ Meas. Temp	0.60 @ 60
Rmf @ Meas. Temp	0.45 @ 60
Rmc @ Meas. Temp	0.81 @ 60
Source of Rmf / Rmc	Charts
Rm @ BHT	0.31 @ 116
Operating Rig Time	3 Hours
Max Rec. Temp. F	116
Equipment Number	91
Location	Hays
Recorded By	D. Schmidt
Witnessed By	Rodney Gonzales

<<< Fold Here >>>

All interpretations are opinions based on inferences from electrical or other measurements and we cannot and do not guarantee the accuracy or correctness of any interpretation, and we shall not, except in the case of gross or willful negligence on our part, be liable or responsible for any loss, costs, damages, or expenses incurred or sustained by anyone resulting from any interpretation made by any of our officers, agents or employees. These interpretations are also subject to our general terms and conditions set out in our current Price Schedule.

Comments

Thank you for using Log-Tech, Inc.
 (785) 625-3858
 Wakeeney,
 North to Red Line Rd, East to 310 Rd, 3 1/4 South,
 East into about 1 mile

Database File: mcelvain_herman_15-7hd.db
 Dataset Pathname: dil/mcstkml
 Presentation Format: dil2in
 Dataset Creation: Fri Dec 05 19:57:01 2014
 Charted by: Depth in Feet scaled 1:600

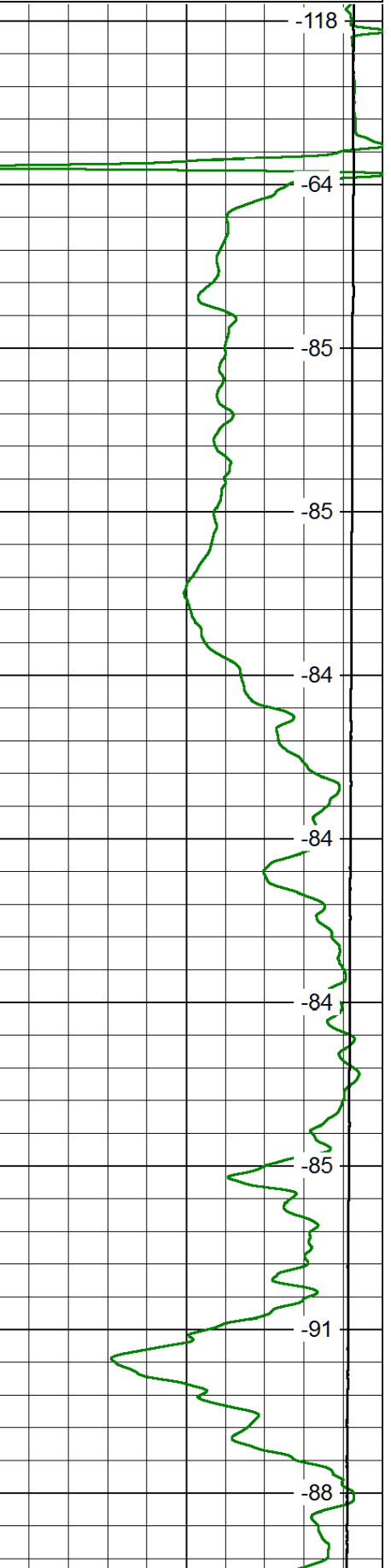
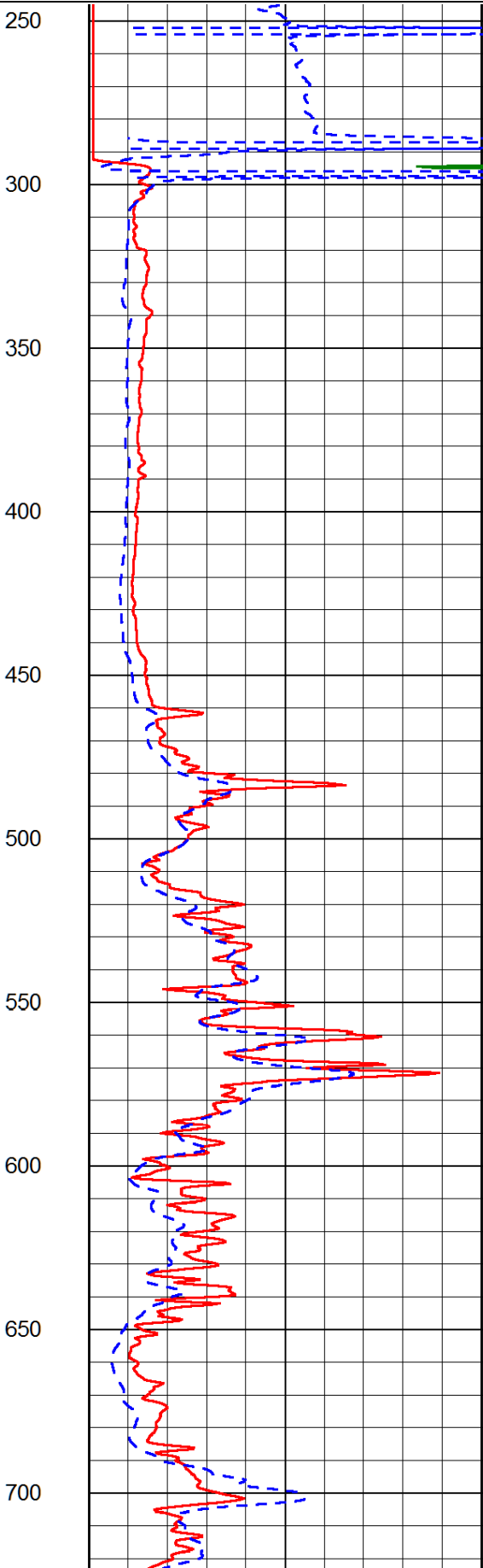
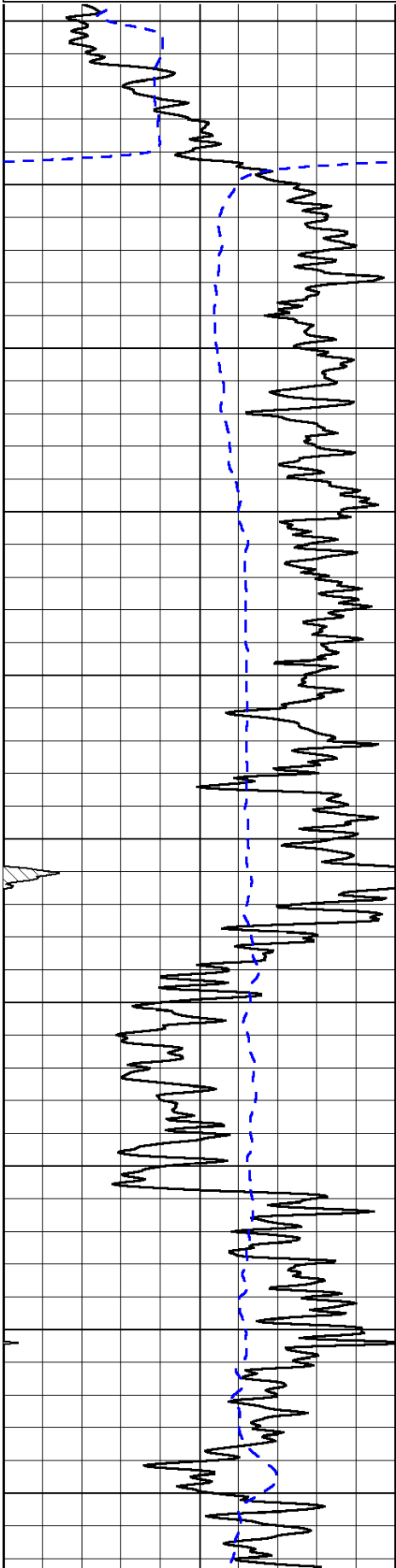
0	Gamma Ray	150
-200	SP (mV)	0

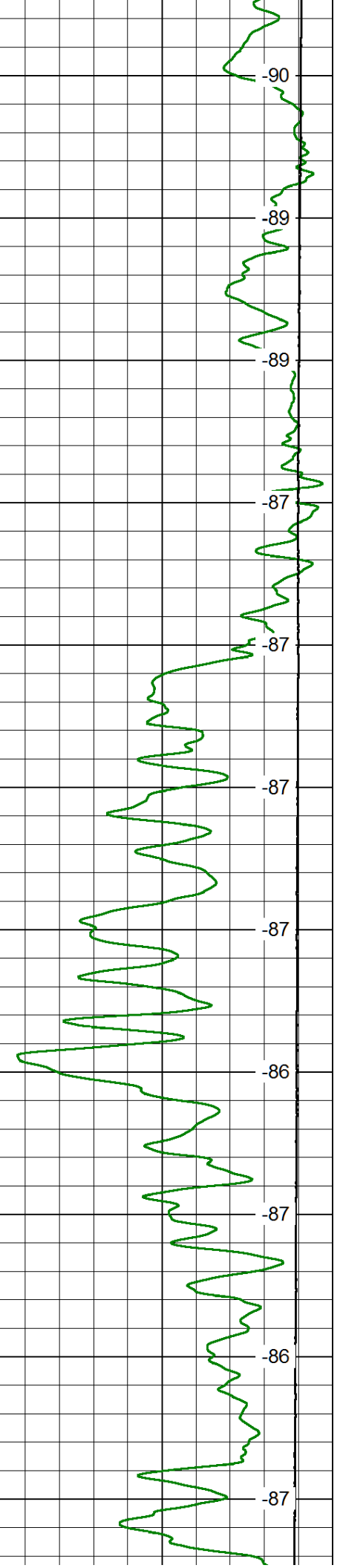
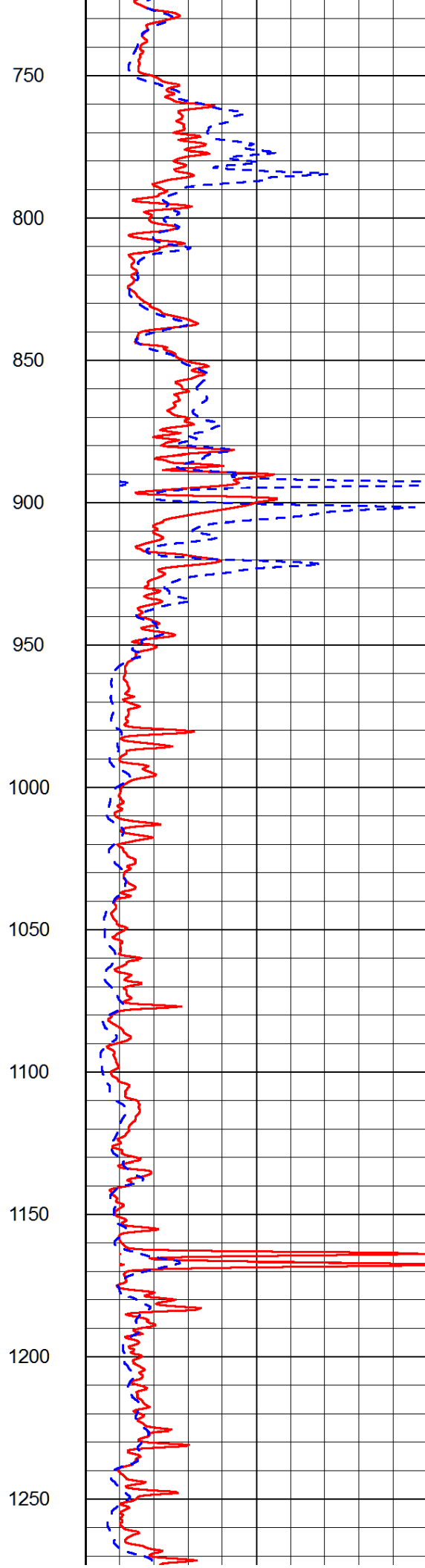
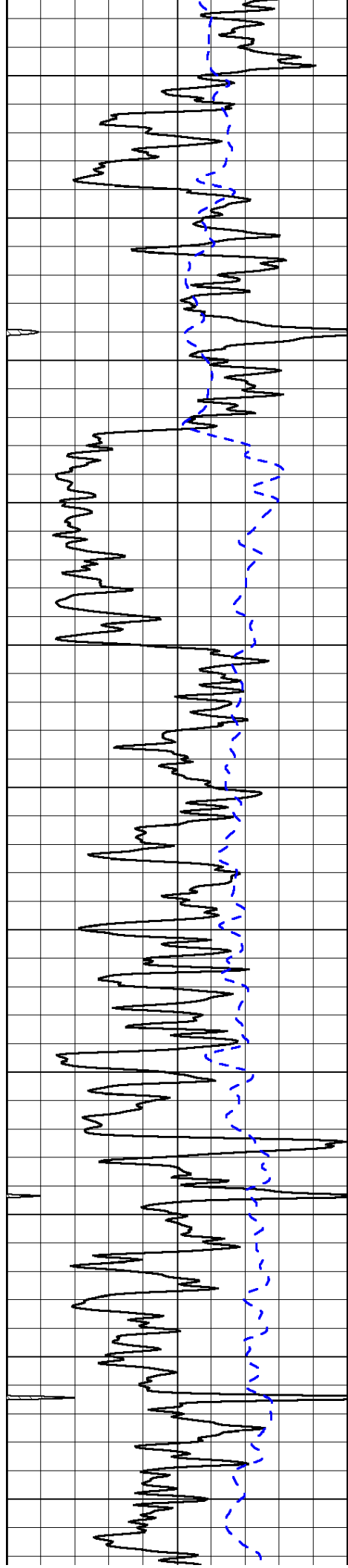
0	Shallow Resistivity	50
0	Deep Resistivity	50

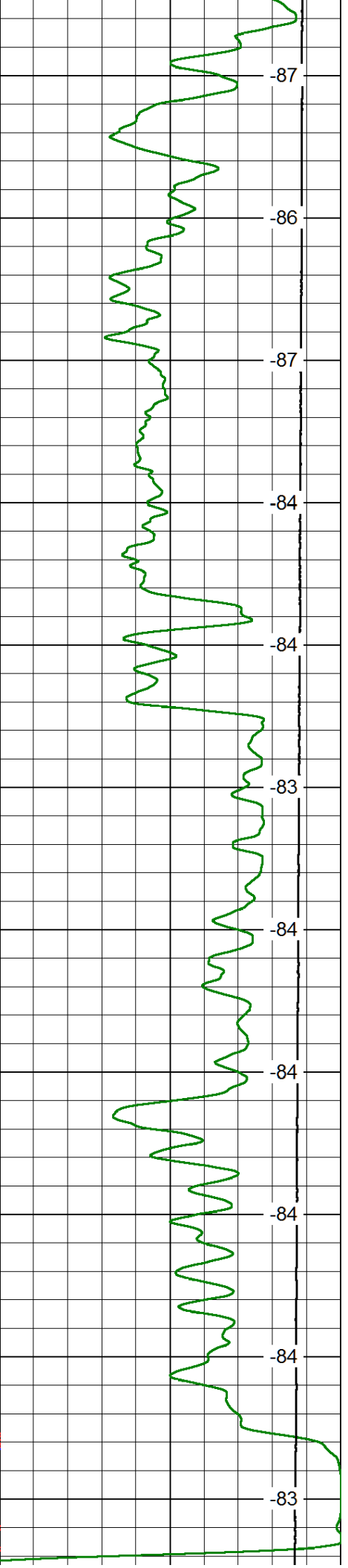
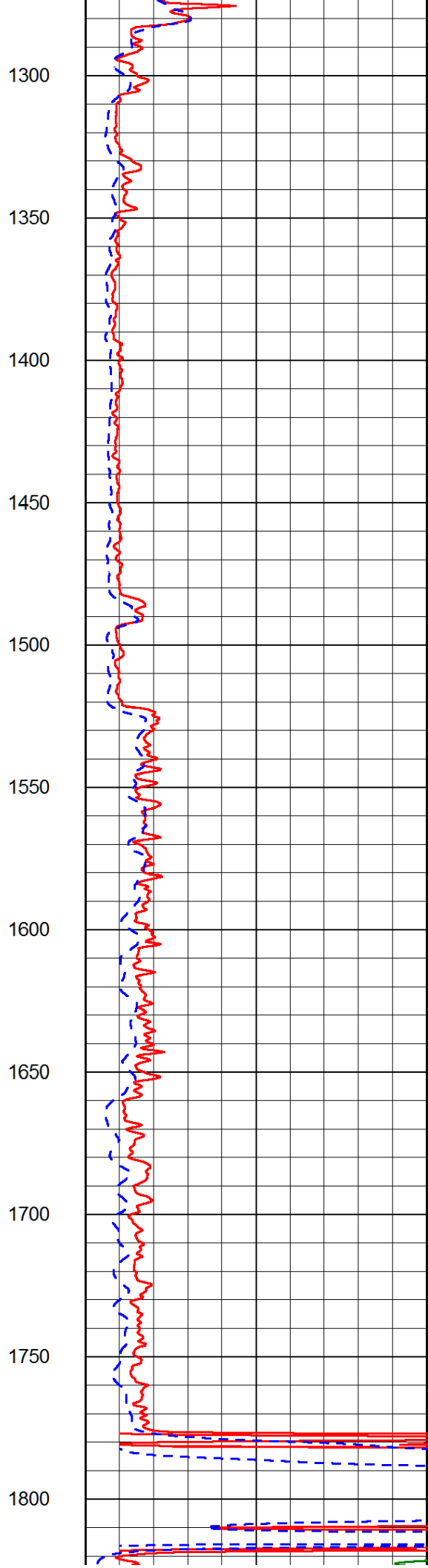
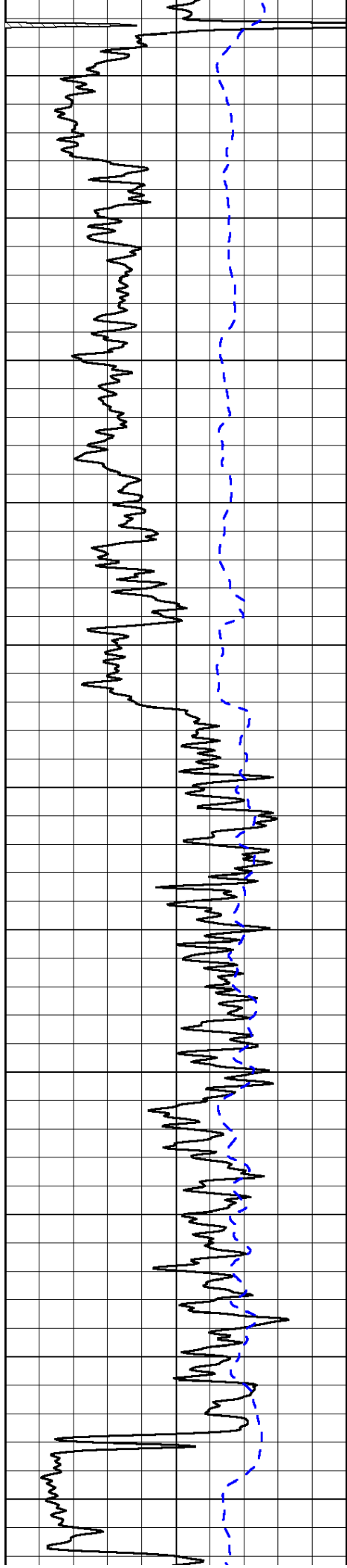
LSPD

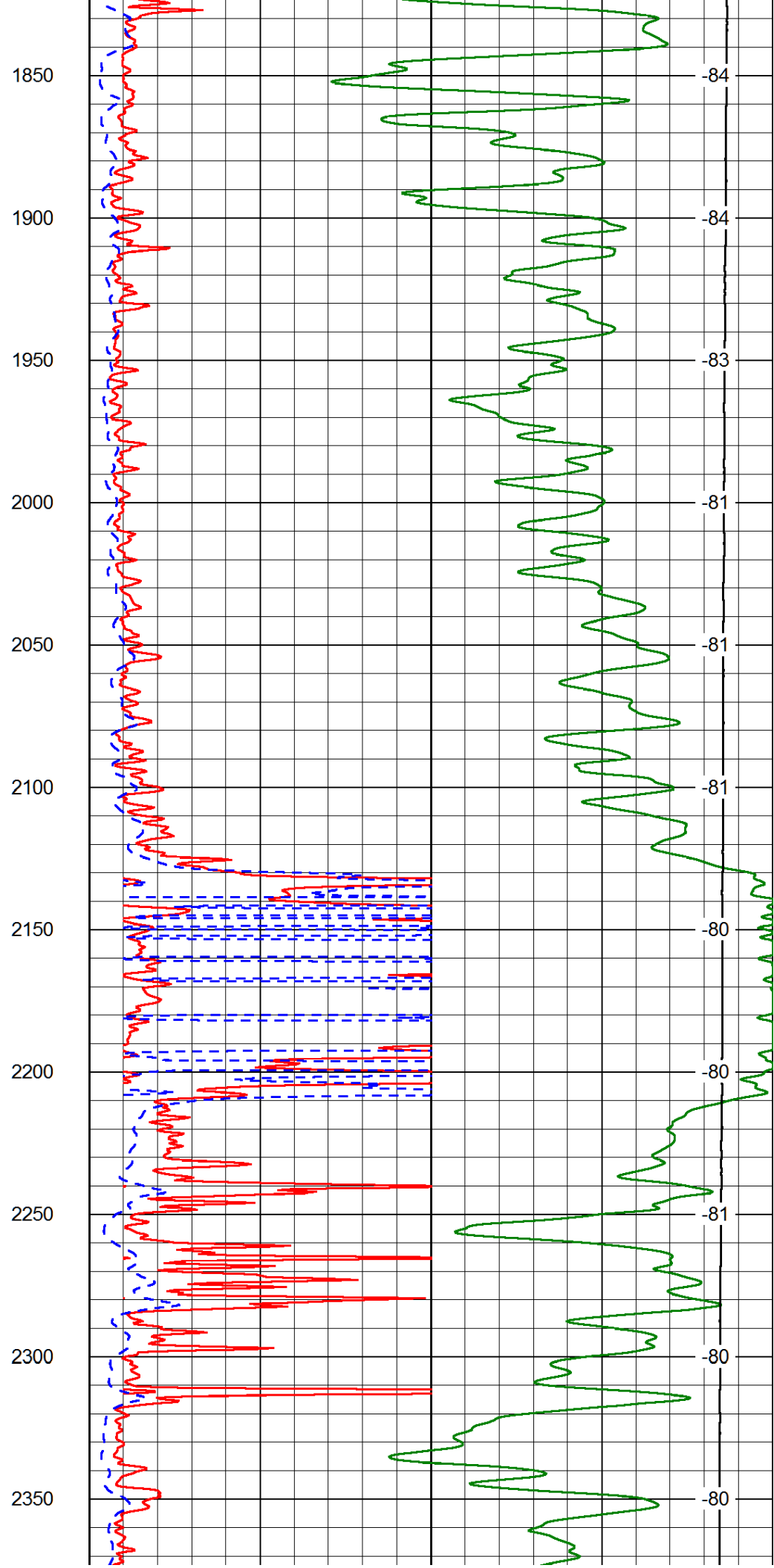
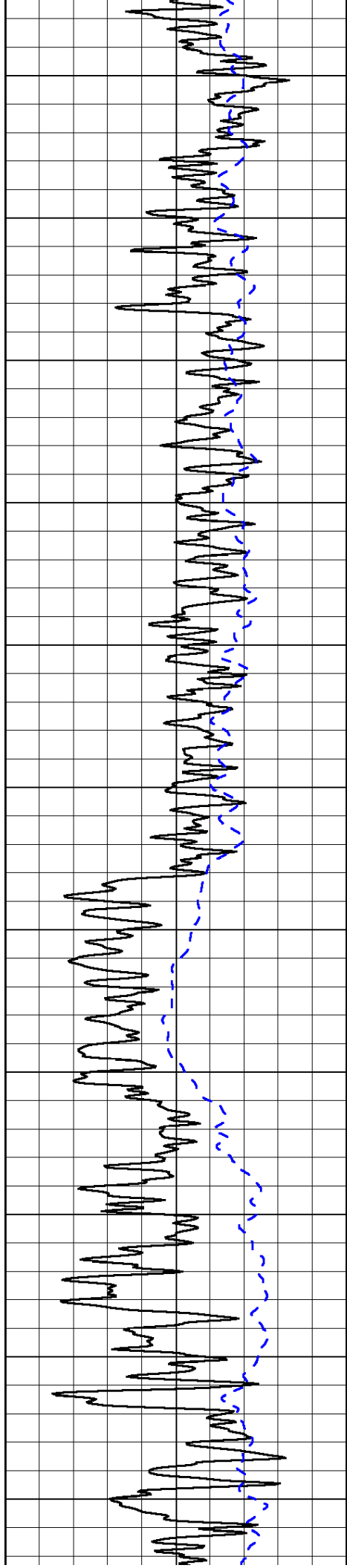
1000	Conductivity	0
15000	Line Tension	0

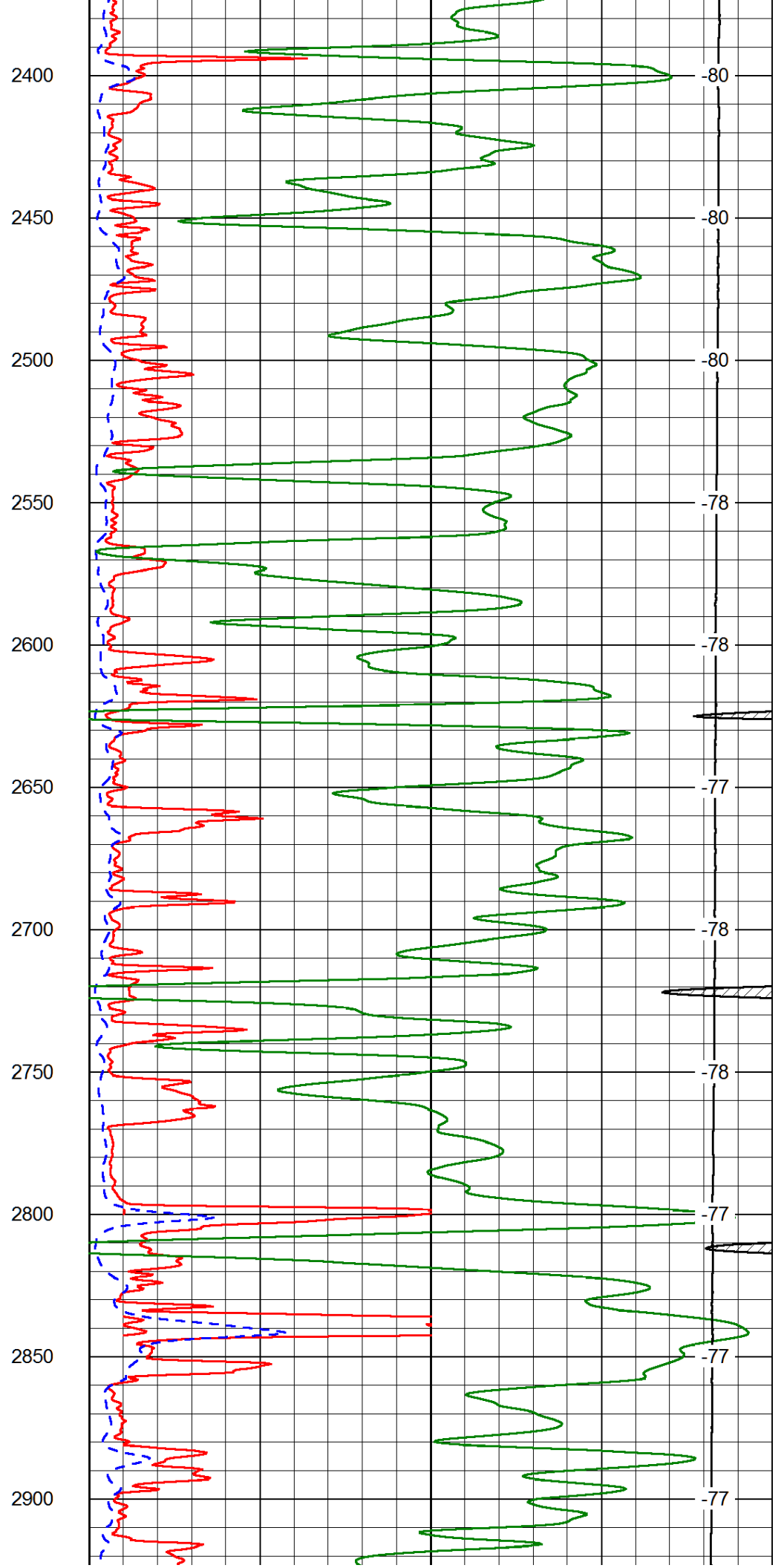
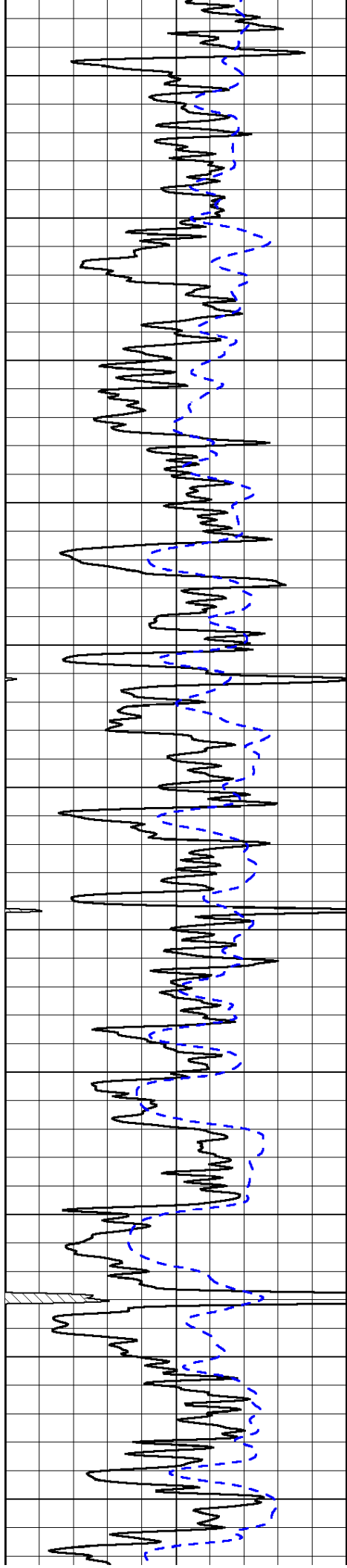
50	Shallow Resistivity	500
50	Deep Resistivity	500

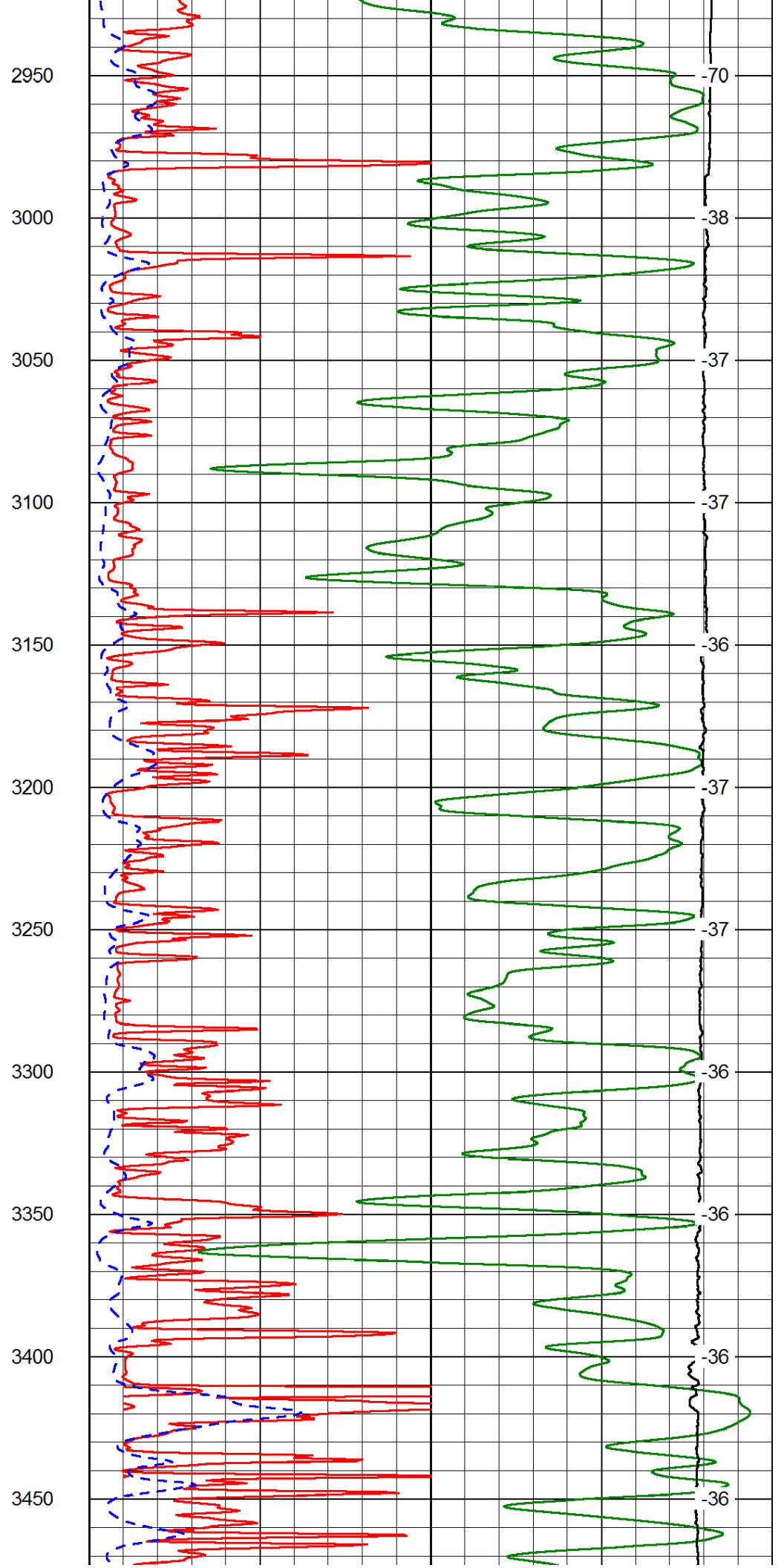
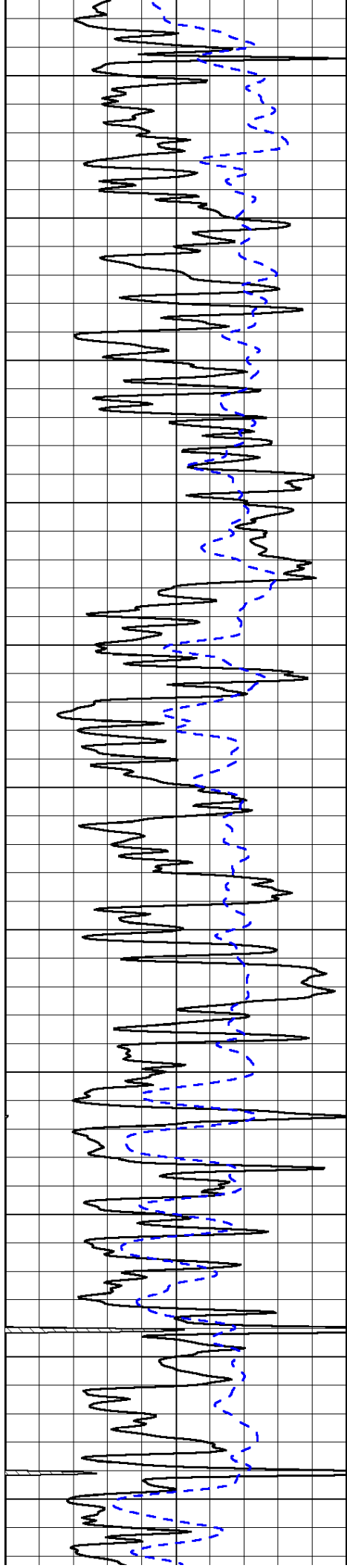


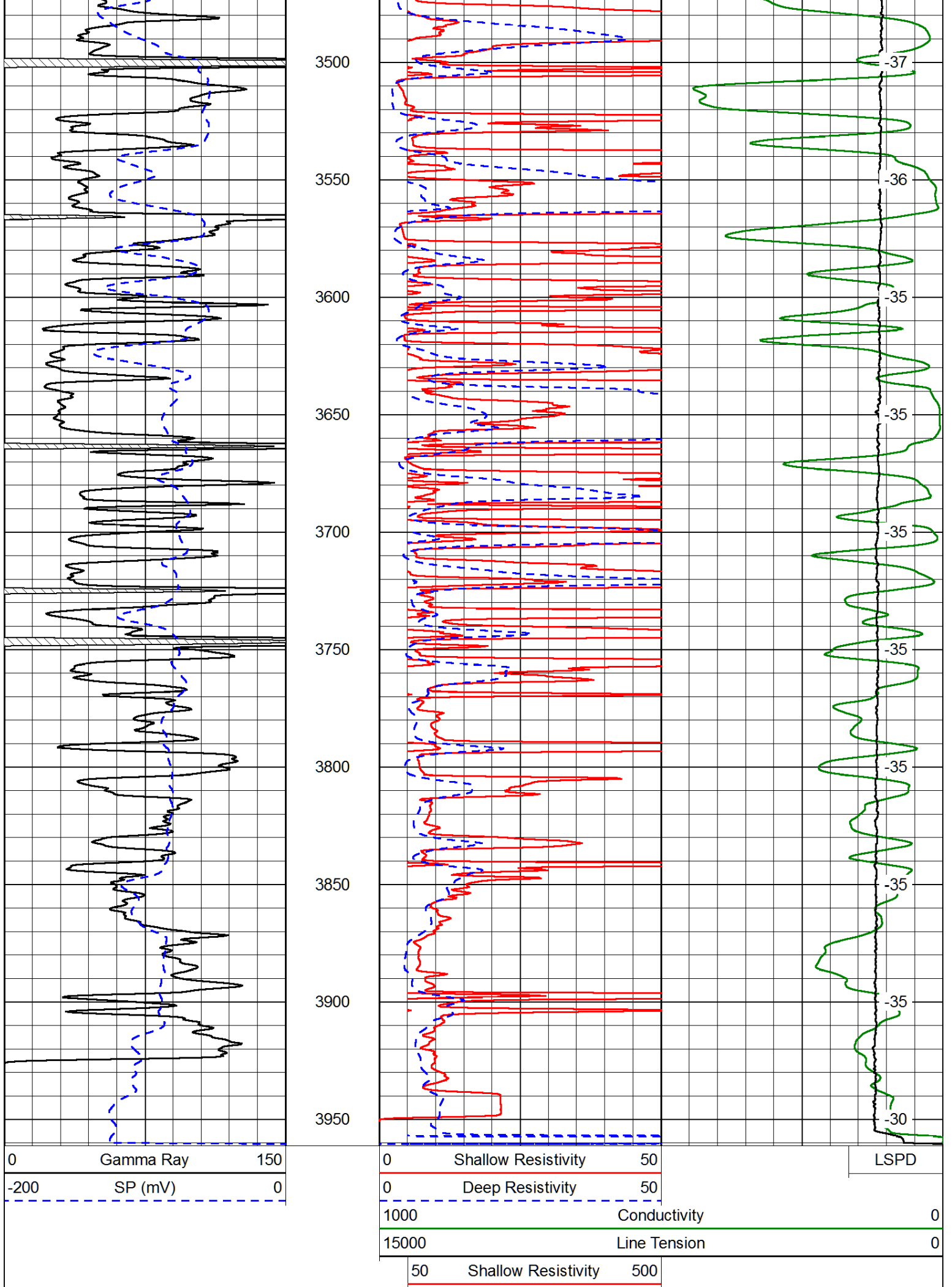










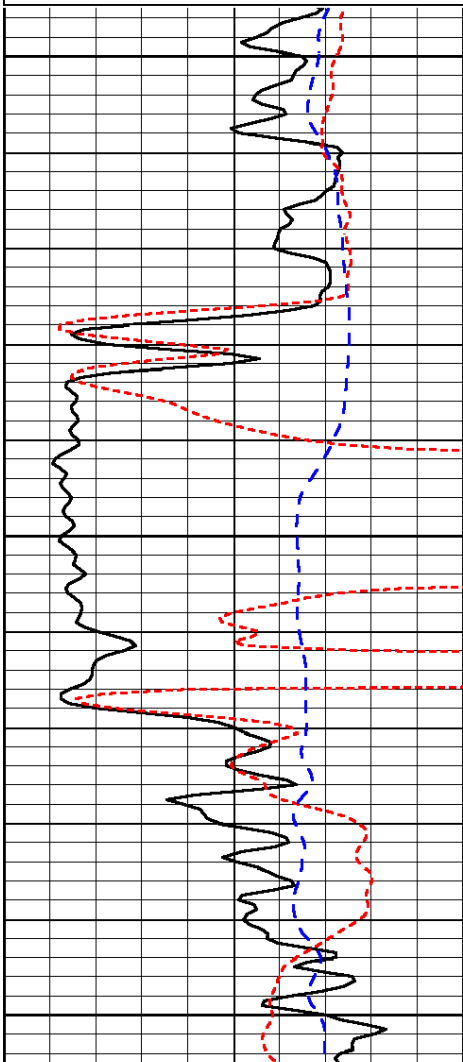


Database File: mcelvain_herman_15-7hd.db
 Dataset Pathname: dil/mcstkml
 Presentation Format: dil
 Dataset Creation: Fri Dec 05 19:57:01 2014
 Charted by: Depth in Feet scaled 1:240

0	Gamma Ray	150
-160	RxoRt	40
-200	SP (mV)	0

0.2	Deep Resistivity	2000
0.2	Medium Resistivity	2000
0.2	Shallow Resistivity	2000
10000	Line Tension	0

LSPD

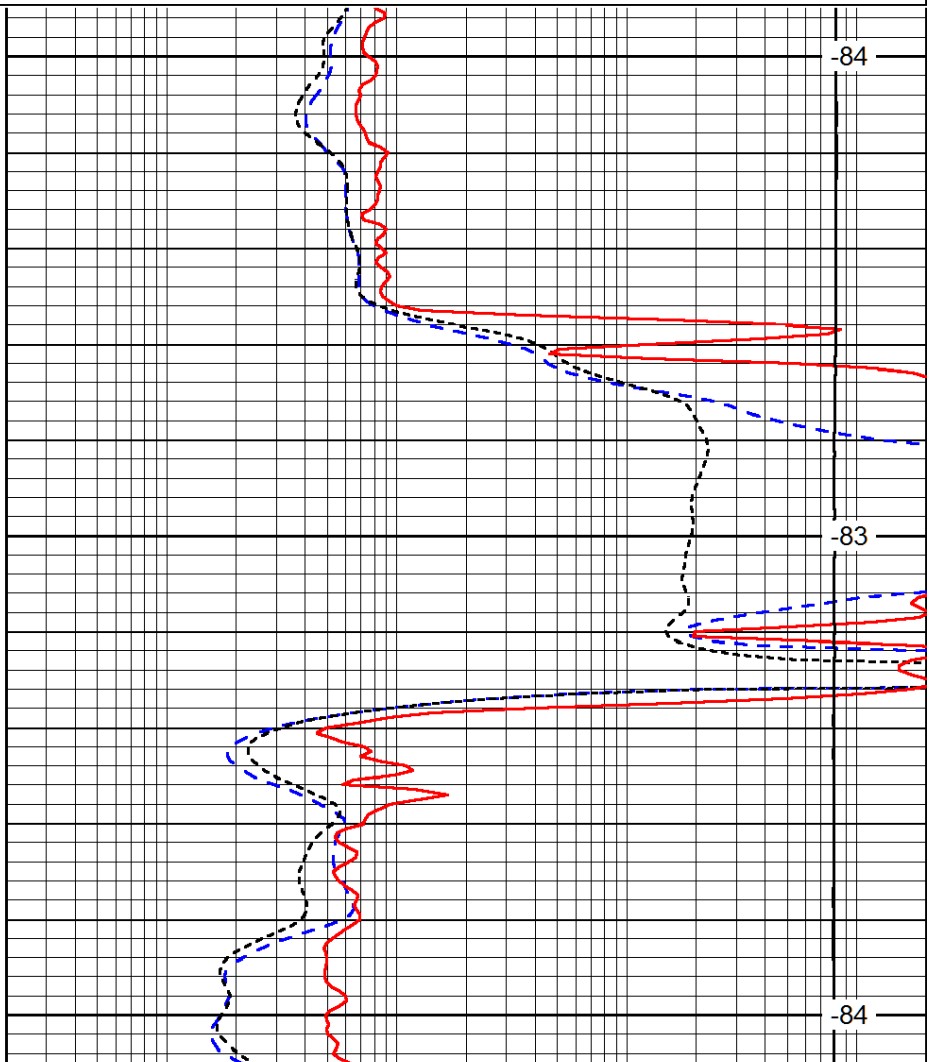


1750

1800

1850

0	Gamma Ray	150
-160	RxoRt	40
-200	SP (mV)	0



-84

-83

-84

0.2	Deep Resistivity	2000
0.2	Medium Resistivity	2000
0.2	Shallow Resistivity	2000
10000	Line Tension	0

LSPD

Database File: mcelvain_herman_15-7hd.db
 Dataset Pathname: dil/mcstkml
 Presentation Format: dil
 Dataset Creation: Fri Dec 05 19:57:01 2014
 Charted by: Depth in Feet scaled 1:240

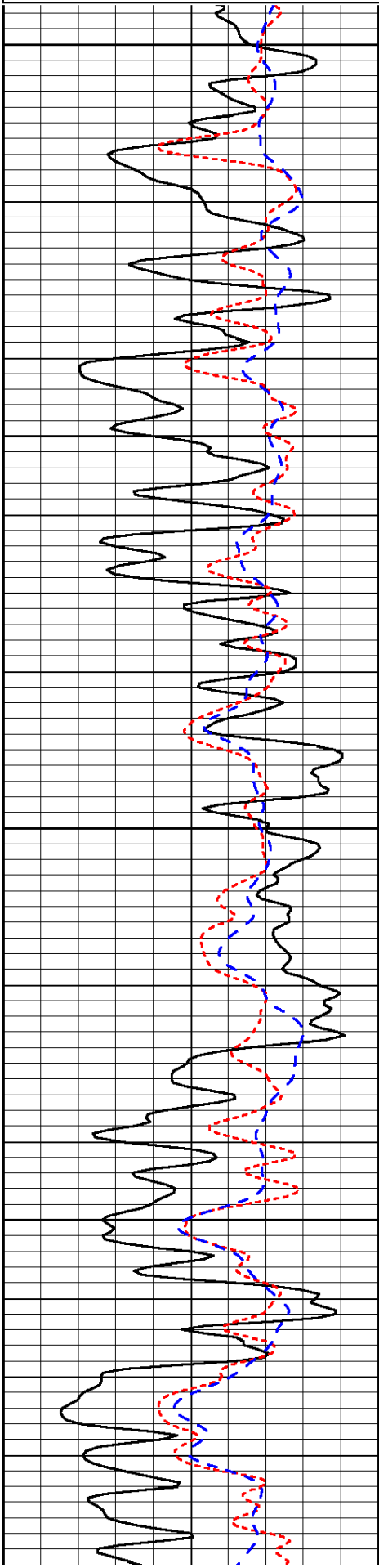
0	Gamma Ray	150
---	-----------	-----

0.2	Deep Resistivity	2000
-----	------------------	------

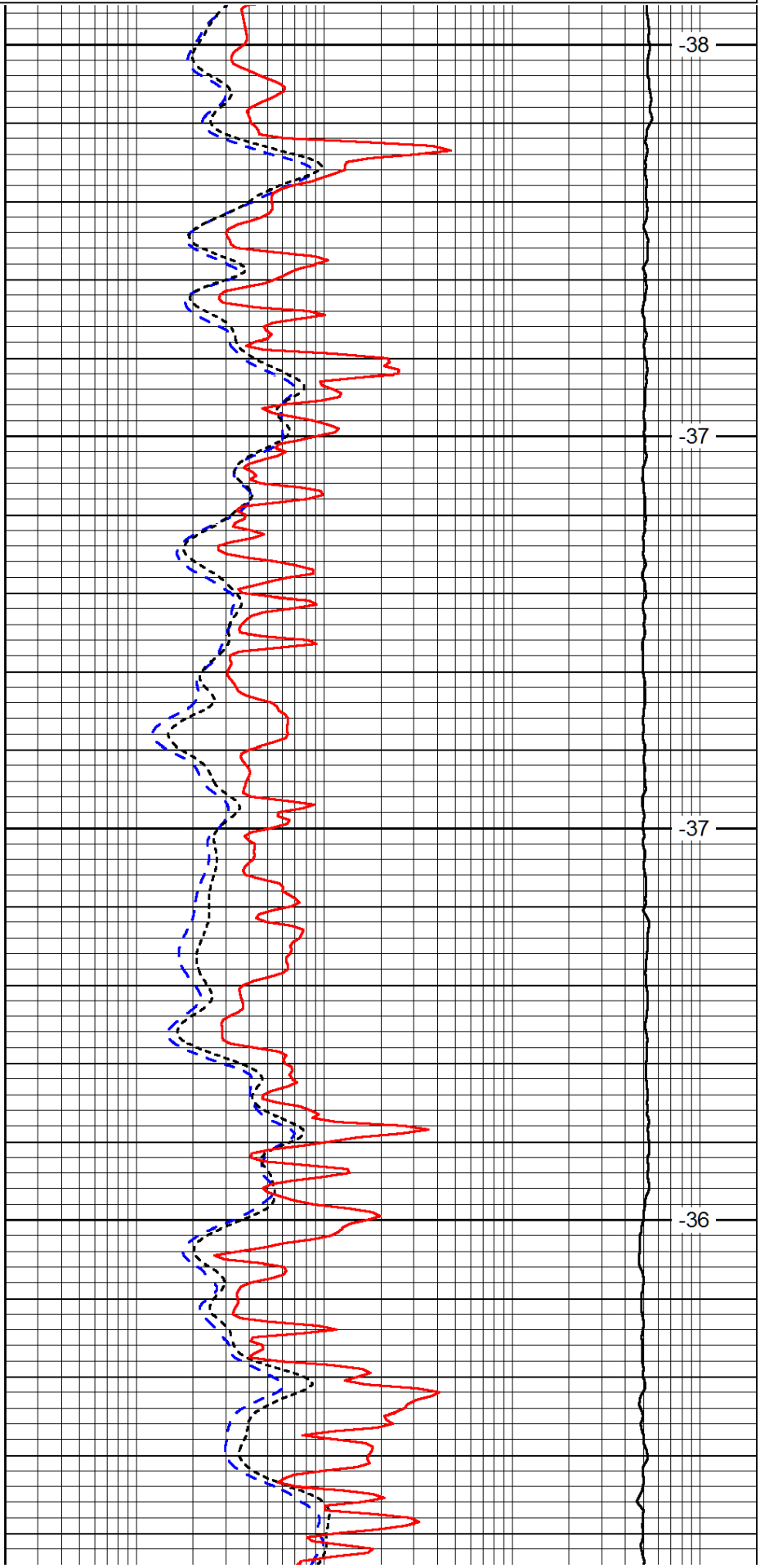
-160	RxoRt	40
-200	SP (mV)	0

0.2	Medium Resistivity	2000
0.2	Shallow Resistivity	2000
10000	Line Tension	0

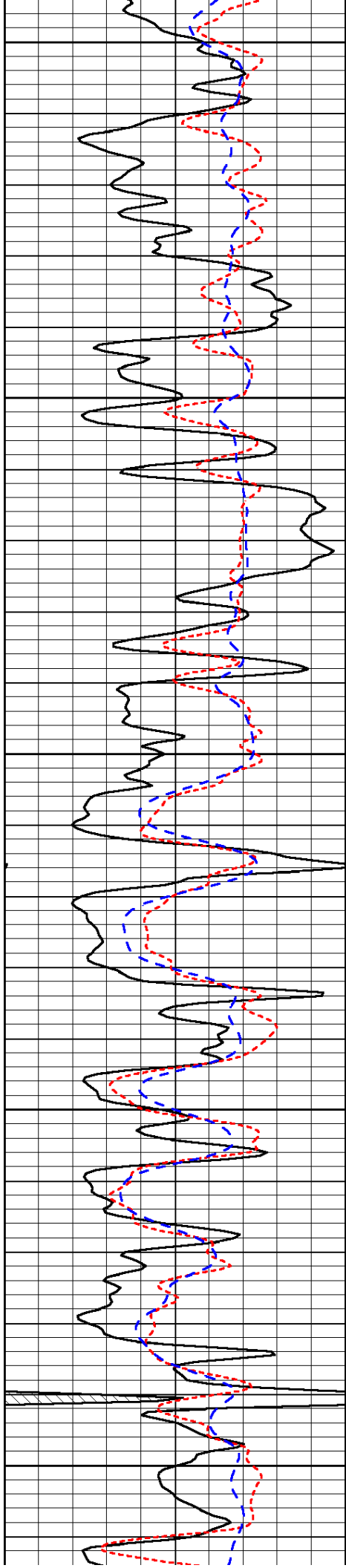
LSPD



3000
3050
3100
3150



-38
-37
-37
-36



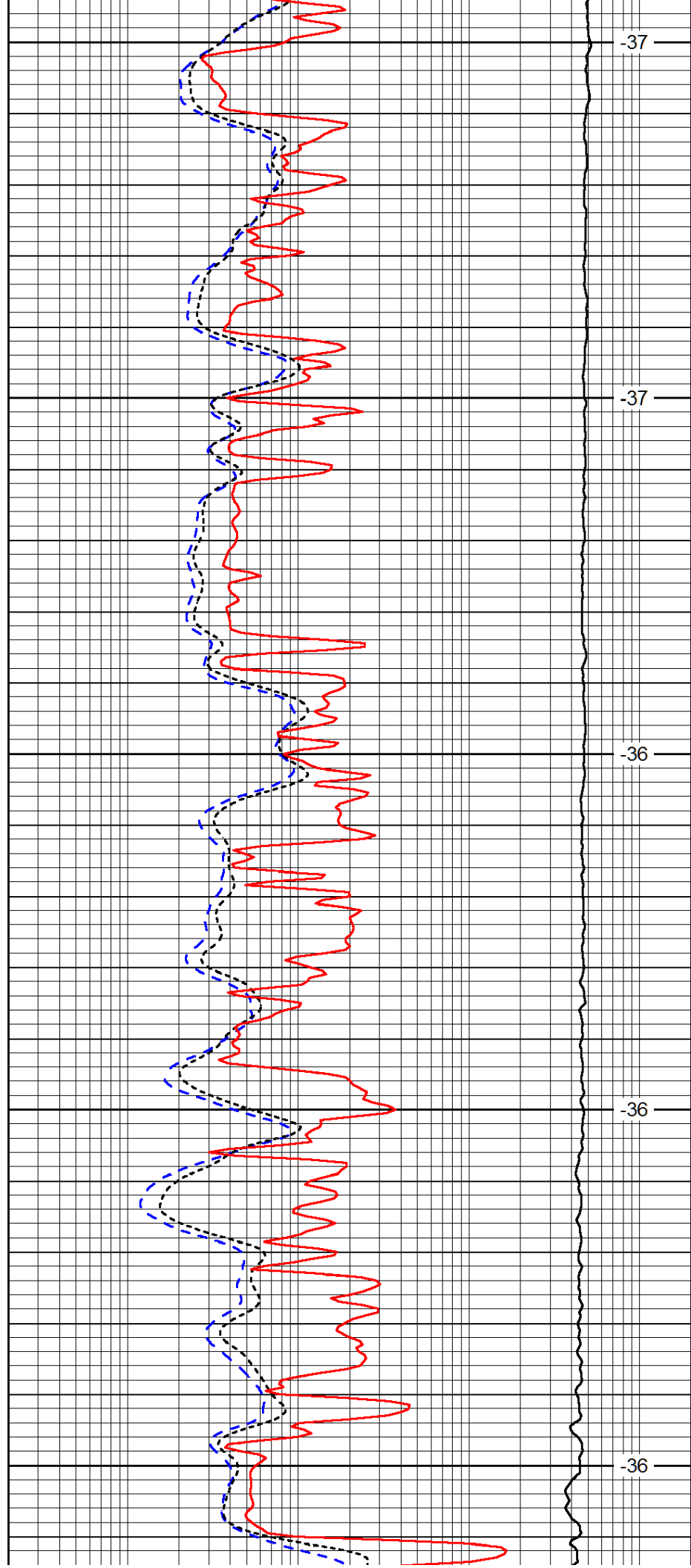
3200

3250

3300

3350

3400



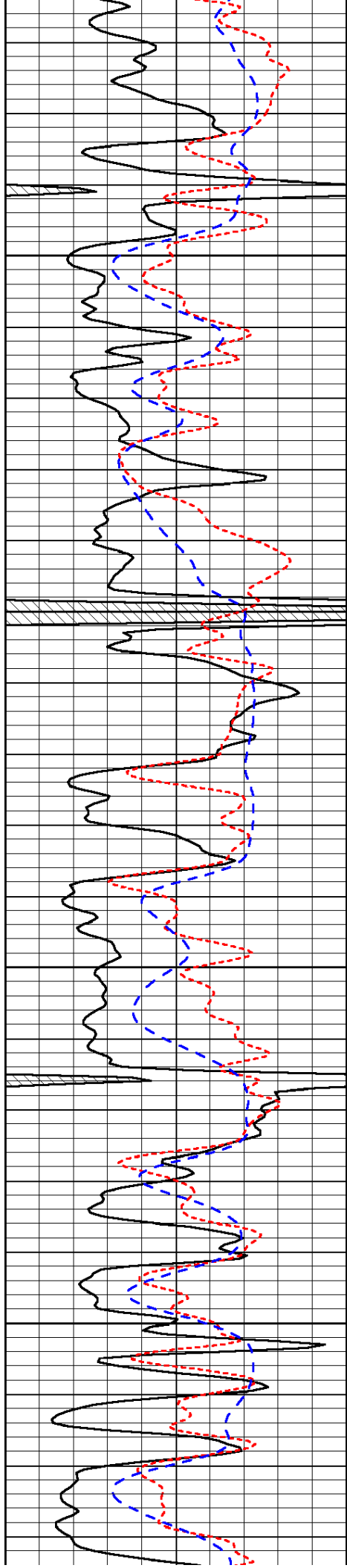
-37

-37

-36

-36

-36

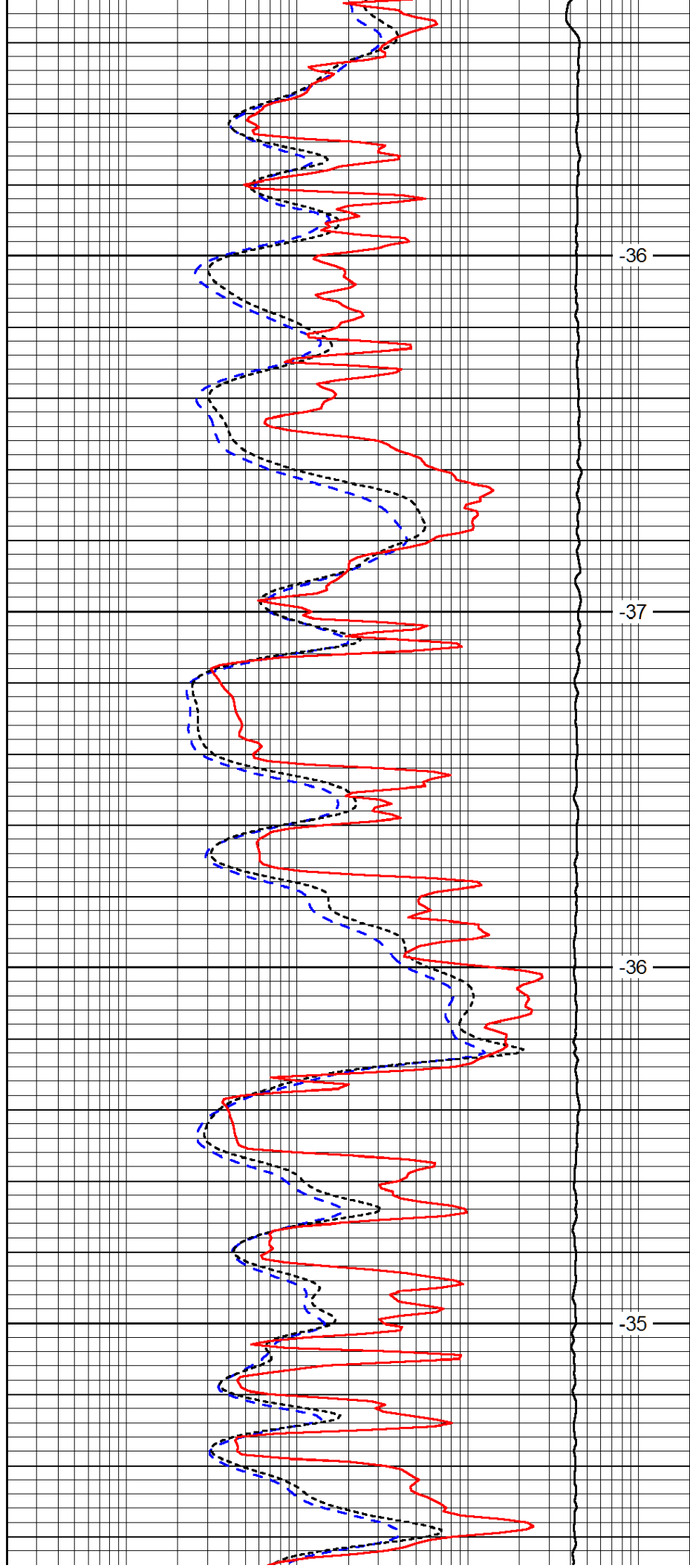


3450

3500

3550

3600

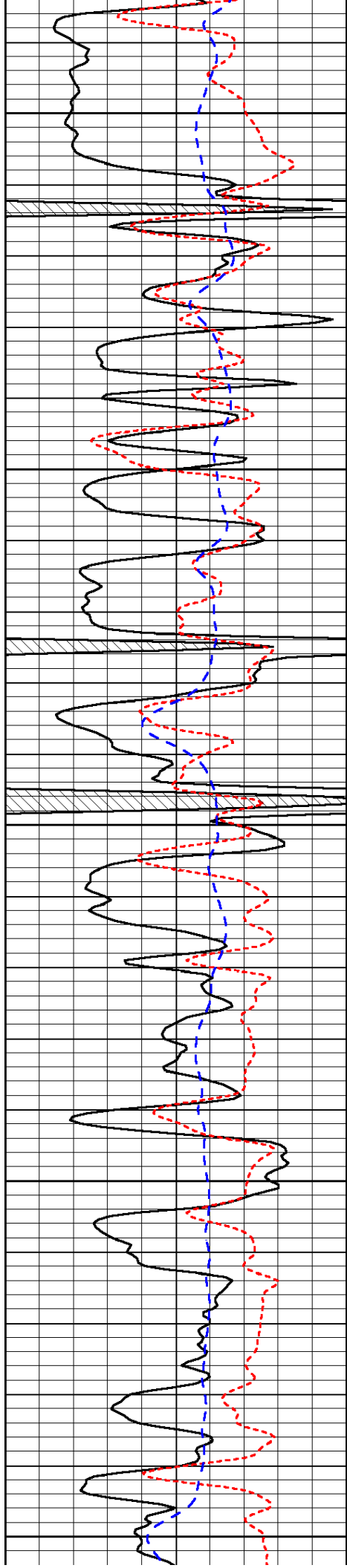


-36

-37

-36

-35



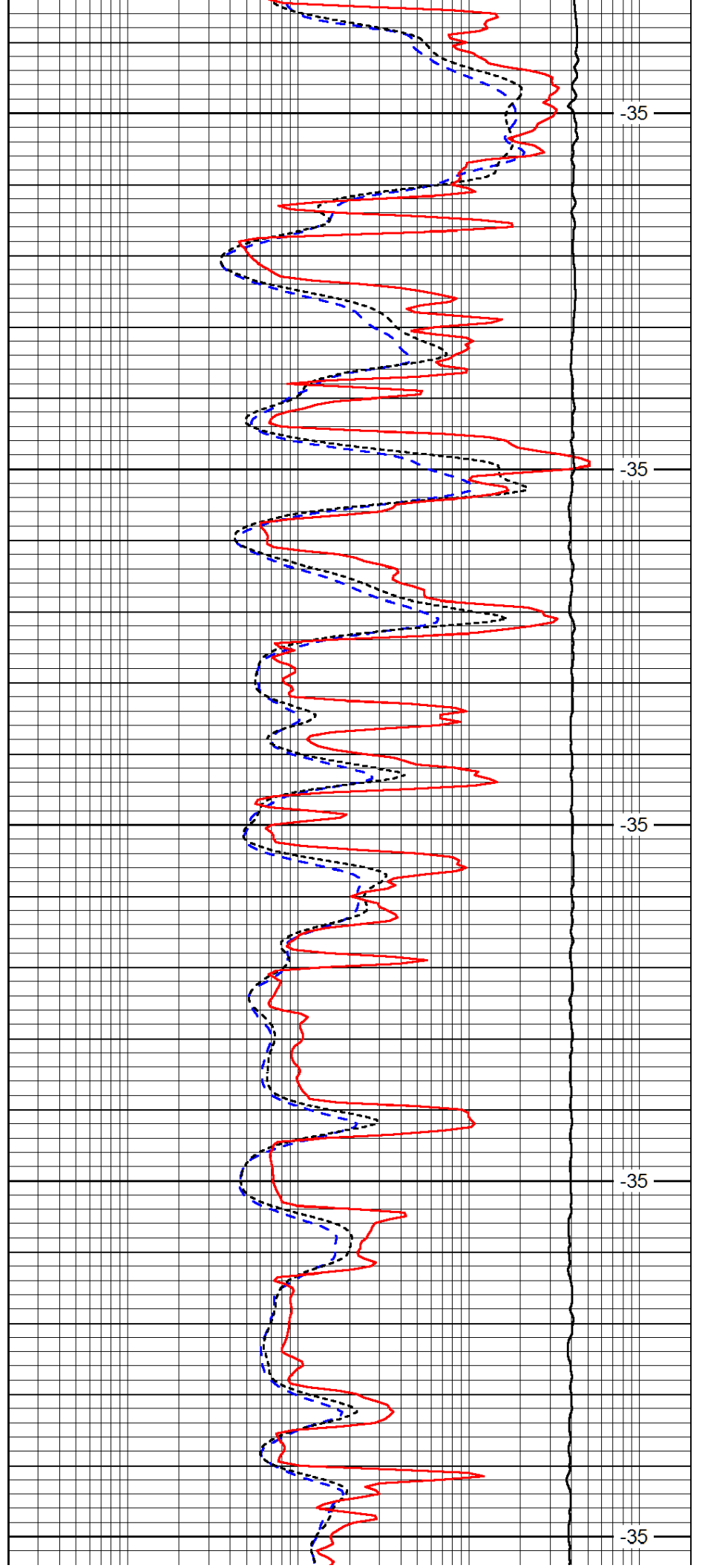
3650

3700

3750

3800

3850



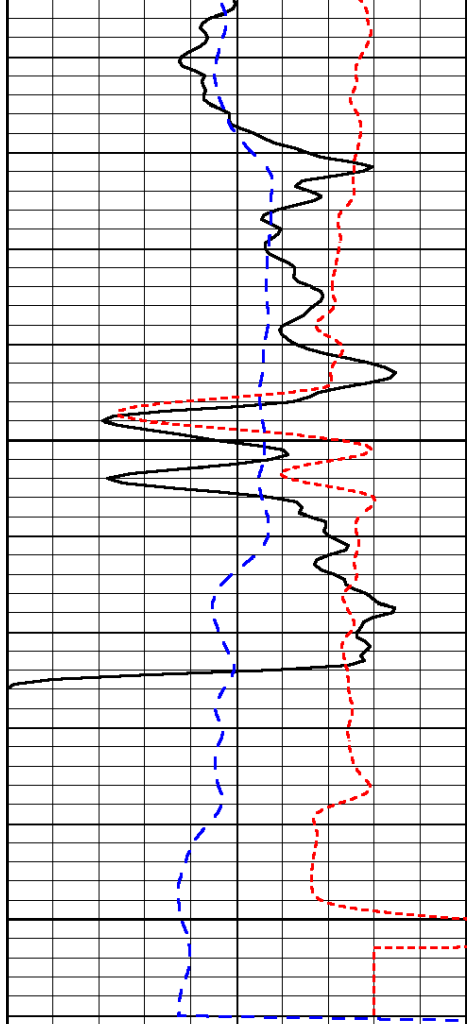
-35

-35

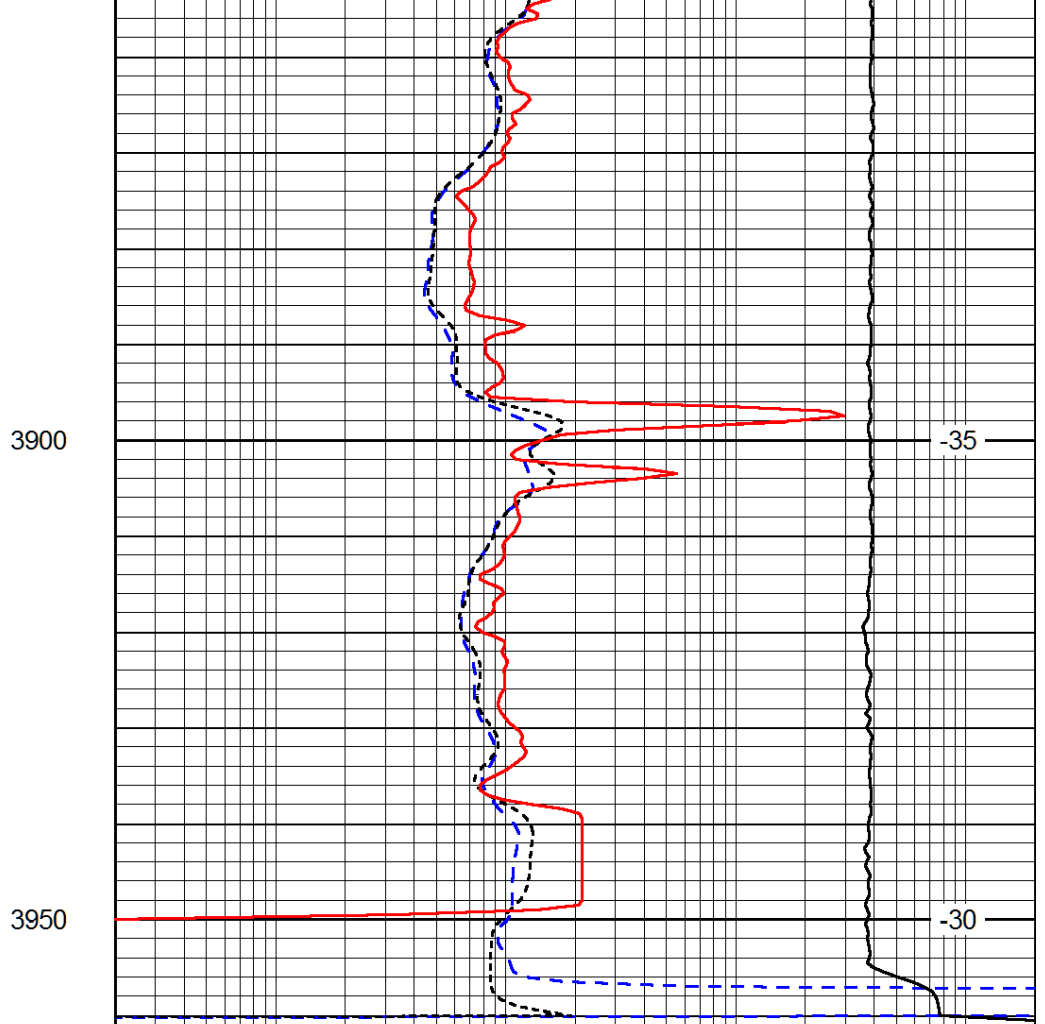
-35

-35

-35



0	Gamma Ray	150
-160	RxoRt	40
-200	SP (mV)	0



0.2	Deep Resistivity	2000
0.2	Medium Resistivity	2000
0.2	Shallow Resistivity	2000
10000	Line Tension	0

LSPD