



Pioneer Energy Services

## Dual Compensated Porosity Log

**Company** Mcelvain Energy, Inc.  
**Well** Herman #15-7  
**Field** Faul Northeast  
**County** Graham **State** Kansas  
**Location** 2136' FNL & 2144' FEL  
**Sec:** 15 **Twp:** 10S **Rge:** 22W

**Permanent Datum** Ground Level Elevation 2269  
**Log Measured From** Kelly Bushing 10 Ft. Above Perm. Datum  
**Drilling Measured From** Kelly Bushing

**Other Services**  
 DIL/MEL  
**Elevation**  
 K.B. 2279  
 D.F. G.I.L. 2269

API No.	15-065-24072-00-00						
Run Number	One	Date	12/5/2014				
Type Log	CNL / CDL						
Depth Driller	3955						
Depth Logger	3955						
Bottom Logged Interval	3926						
Top Logged Interval	3000						
Type Fluid In Hole	Chemical						
Salinity, PPM CL	1200						
Density	9.3						
Level	Full						
Max. Rec. Temp. F	116						
Operating Rig Time	3 Hours						
Equipment -- Location	91 Hays						
Recorded By	D. Schmidt						
Witnessed By	Rodney Gonzales						
<b>Borehole Record</b>		<b>Casing Record</b>					
Run No	Bit	From	To	Size	Wgt.	From	To
One	12.25	00	294	8.625	23#	00	294
Two	7.875	294					

<<< Fold Here >>>

All interpretations are opinions based on inferences from electrical or other measurements and we cannot and do not guarantee the accuracy or correctness of any interpretation, and we shall not, except in the case of gross or willful negligence on our part, be liable or responsible for any loss, costs, damages, or expenses incurred or sustained by anyone resulting from any interpretation made by any of our officers, agents or employees. These interpretations are also subject to our general terms and conditions set out in our current Price Schedule.

**Comments**

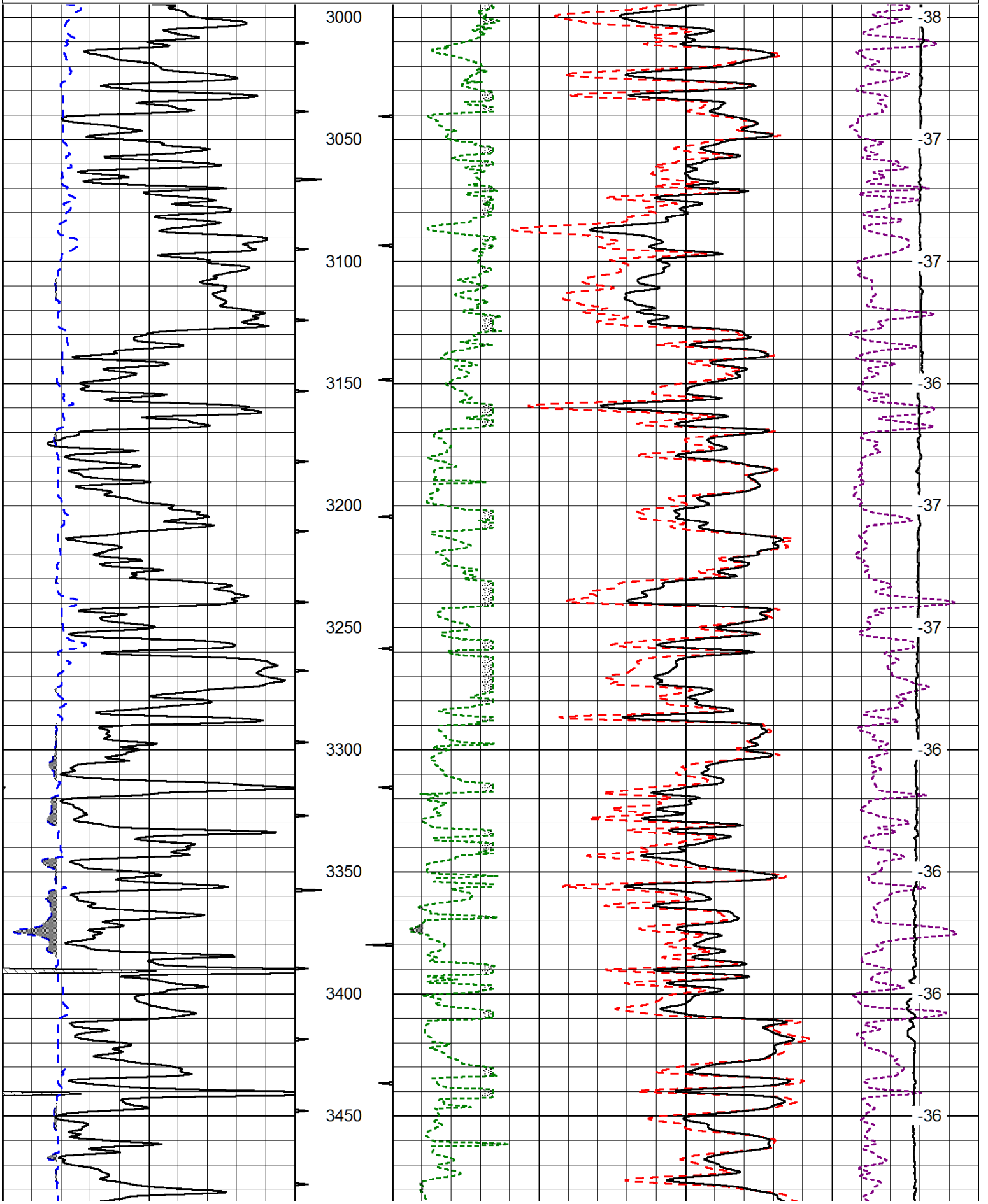
Thank you for using Log-Tech, Inc.  
 (785) 625-3858  
  
 Wakeeney,  
 North to Red Line Rd, East to 310 Rd, 3 1/4 South,  
 East into about 1 mile

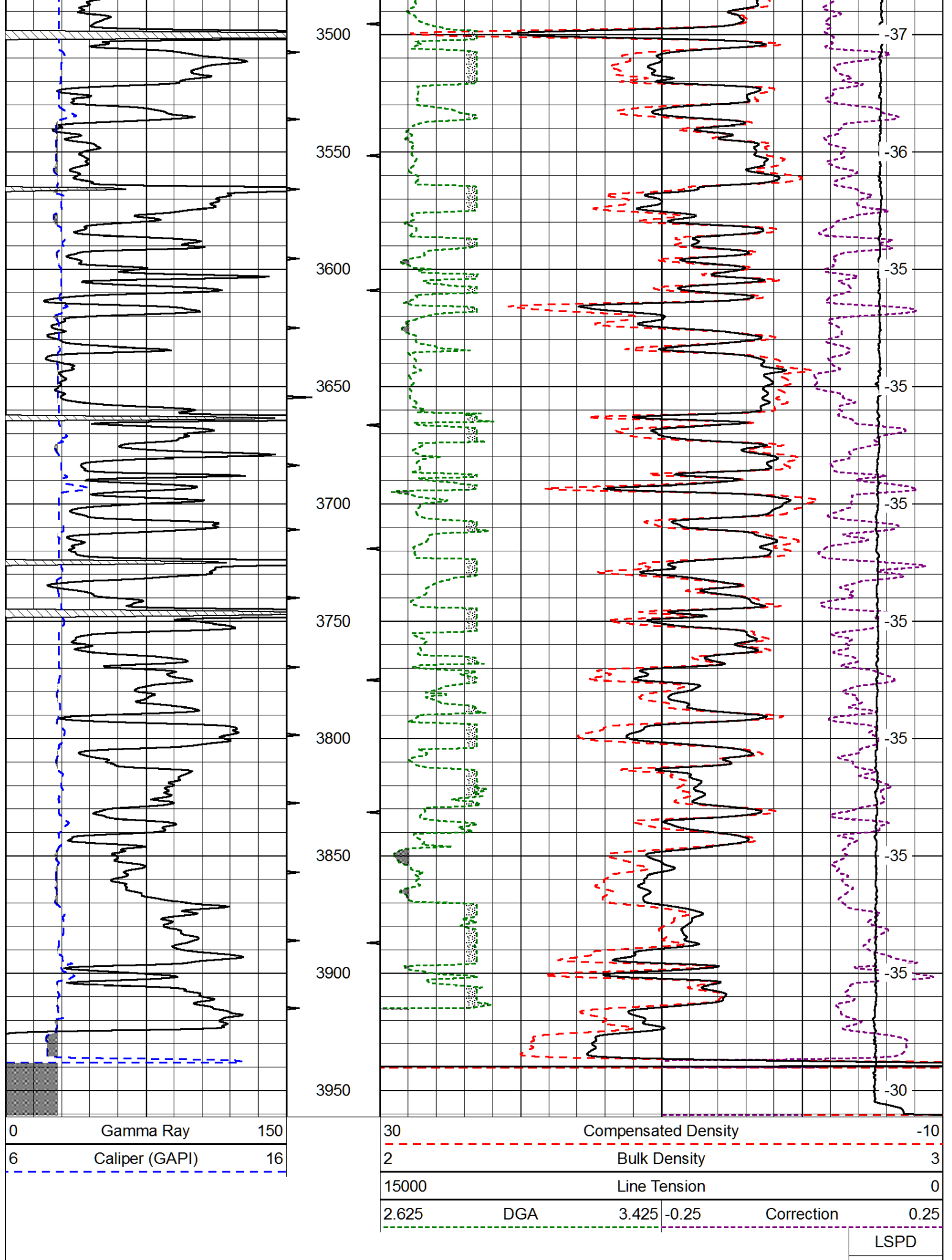
Database File: mcelvain\_herman\_15-7hd.db  
 Dataset Pathname: dil/mcstkml  
 Presentation Format: cdl  
 Dataset Creation: Fri Dec 05 19:57:01 2014  
 Charted by: Depth in Feet scaled 1:600

0	Gamma Ray	150
6	Caliper (GAPI)	16

30	Compensated Density		-10
2	Bulk Density		3
15000	Line Tension		0
2.625	DGA	3.425	-0.25
			Correction
			0.25

LSPD





0	Gamma Ray	150
6	Caliper (GAPI)	16

30	Compensated Density	-10
2	Bulk Density	3
15000	Line Tension	0
2.625	DGA	3.425 -0.25
	Correction	0.25
	LSPD	

Database File: mcelvain\_herman\_15-7hd.db  
 Dataset Pathname: dil/mcstkml  
 Presentation Format: cndlspec  
 Dataset Creation: Fri Dec 05 19:57:01 2014  
 Charted by: Depth in Feet scaled 1:240

0	Gamma Ray	150	30	CNLS	-10
6	Caliper (GAPI)	16	30	Compensated Density (2.71 ma)	-10
			2.625	DGA	3.425 -0.25
			10000	Line Tension	Correction 0.25
					0

LSPD

