



**COMPLETION
& PRODUCTION
SERVICES CO.**

**MICRO
LOG**

Company GREAT PLAINS ENERGY, INC.
Well COLLEEN RALL TRUST #1-10
Field WILDCAT
County THOMAS State KANSAS

Company GREAT PLAINS ENERGY, INC.
Well COLLEEN RALL TRUST #1-10
Field WILDCAT
County THOMAS
State KANSAS

Location: API #: 15-193-20941-00-00
280' FSL & 550' FWL
SE - SW - SW - SW
SEC 10 TWP 6S RGE 36W
Permanent Datum GROUND LEVEL Elevation 3369
Log Measured From KELLY BUSHING1' A.G.L.
Drilling Measured From KELLY BUSHING
Other Services
CDL/CNL
DIL
Elevation
K.B. 3380
D.F. 3378
G.L. 3369

Date	11-25-14		
Run Number	TWO		
Depth Driller	4963		
Depth Logger	4967		
Bottom Logged Interval	4965		
Top Log Interval	3700		
Casing Driller	8 5/8" @ 366'		
Casing Logger	366'		
Bit Size	7.875		
Type Fluid in Hole	CHEMICAL MUD	CHLORIDES 7,200 PPM	
Density / Viscosity	9.3 / 51		
pH / Fluid Loss	11.5 / 6.8		
Source of Sample	FLOWLINE		
Rm @ Meas. Temp	0.50 @ 95F		
Rmf @ Meas. Temp	0.38 @ 95F		
Rmc @ Meas. Temp	0.60 @ 95F		
Source of Rmf / Rmc	FLOWLINE		
Rm @ BHT	0.38 @ 125F		
Time Circulation Stopped	2 HOURS		
Time Logger on Bottom			
Maximum Recorded Temperature	125F		
Equipment Number	3802		
Location	HAYS, KS.		
Recorded By	IAN MABB		
Witnessed By	RICHARD BELL		

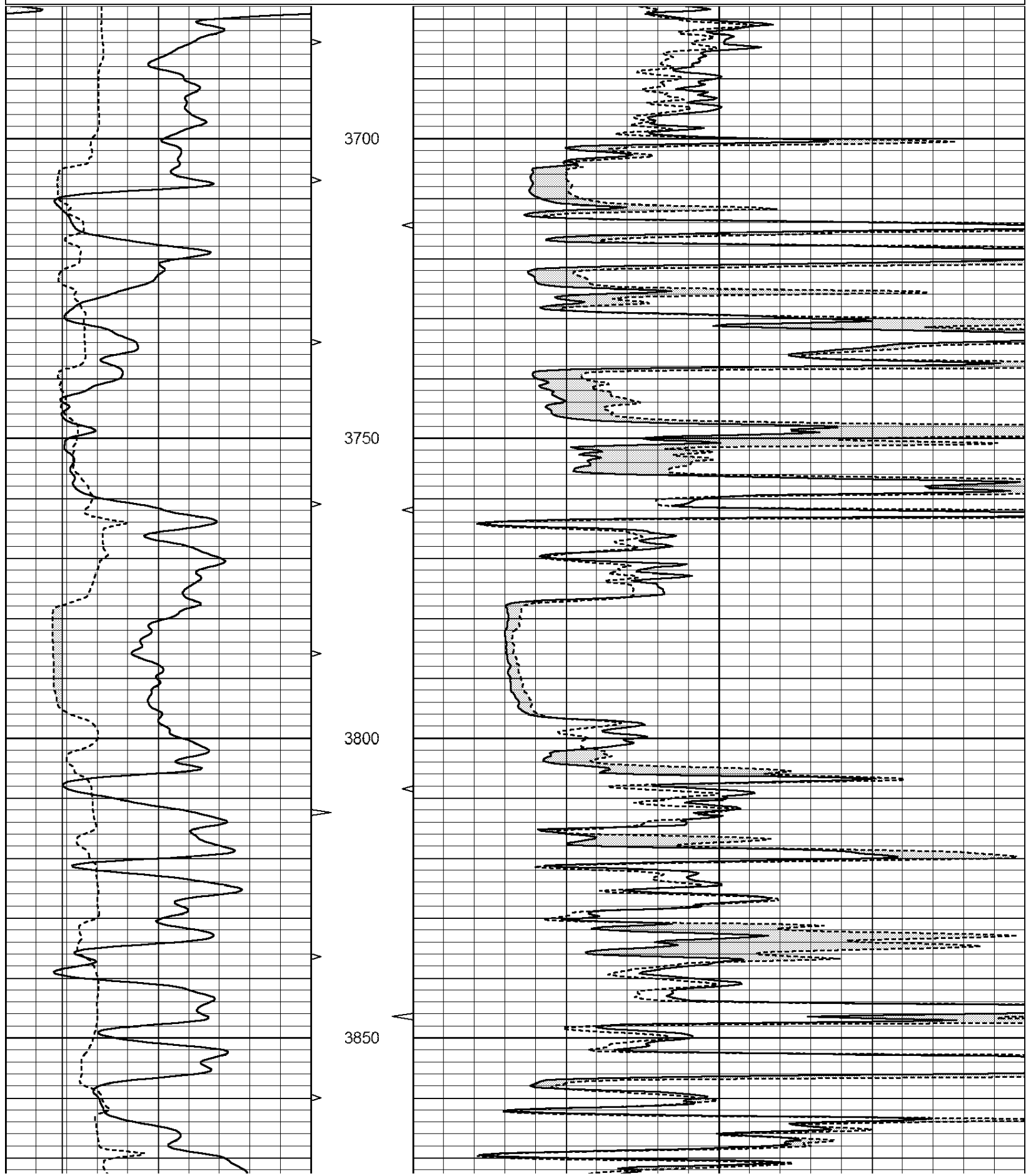
<<< Fold Here >>>

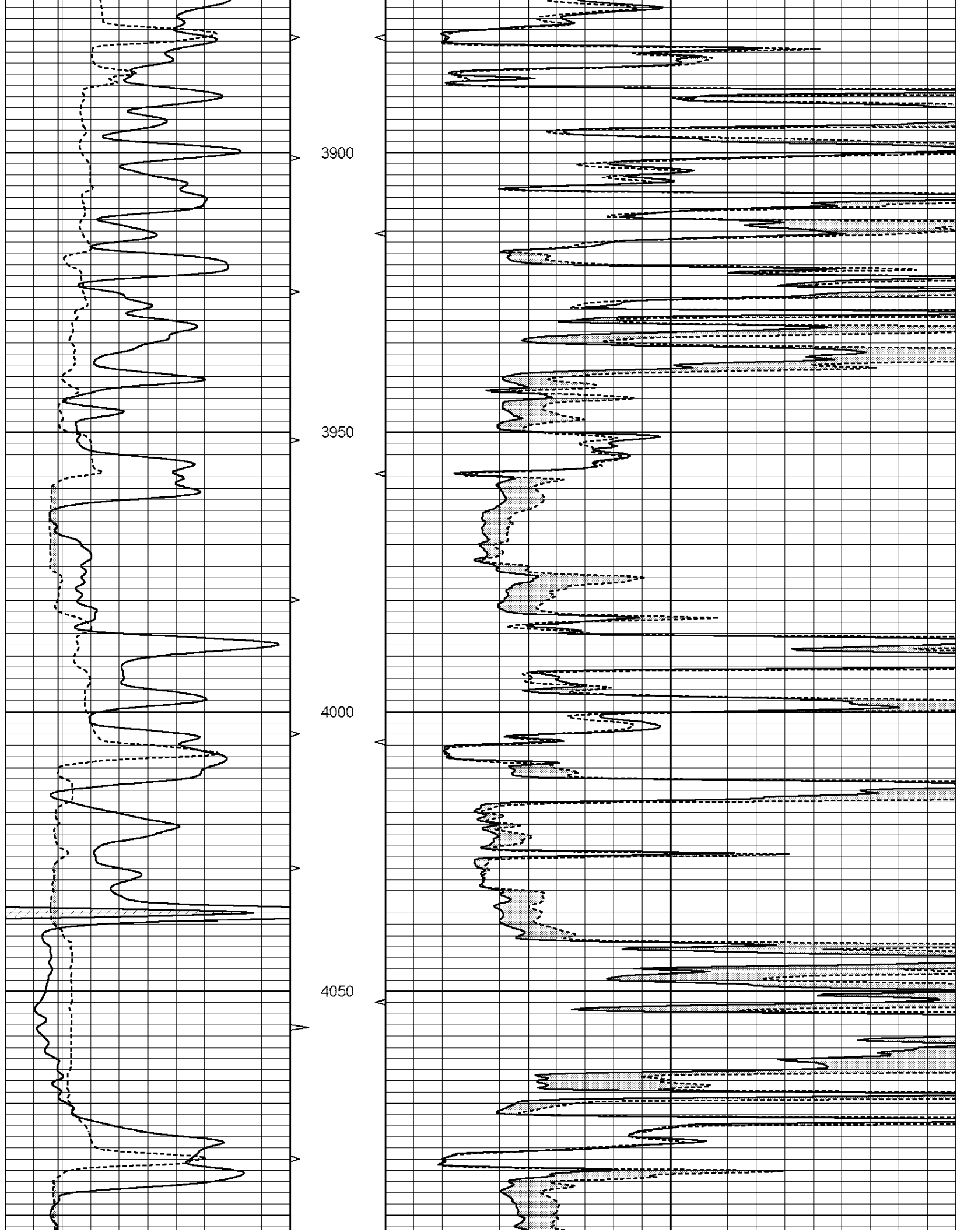
All interpretations are opinions based on inferences from electrical or other measurements and we cannot and do not guarantee the accuracy or correctness of any interpretation, and we shall not, except in the case of gross or willful negligence on our part, be liable or responsible for any loss, costs, damages, or expenses incurred or sustained by anyone resulting from any interpretation made by any of our officers, agents or employees. These interpretations are also subject to our general terms and conditions set out in our current Price Schedule.

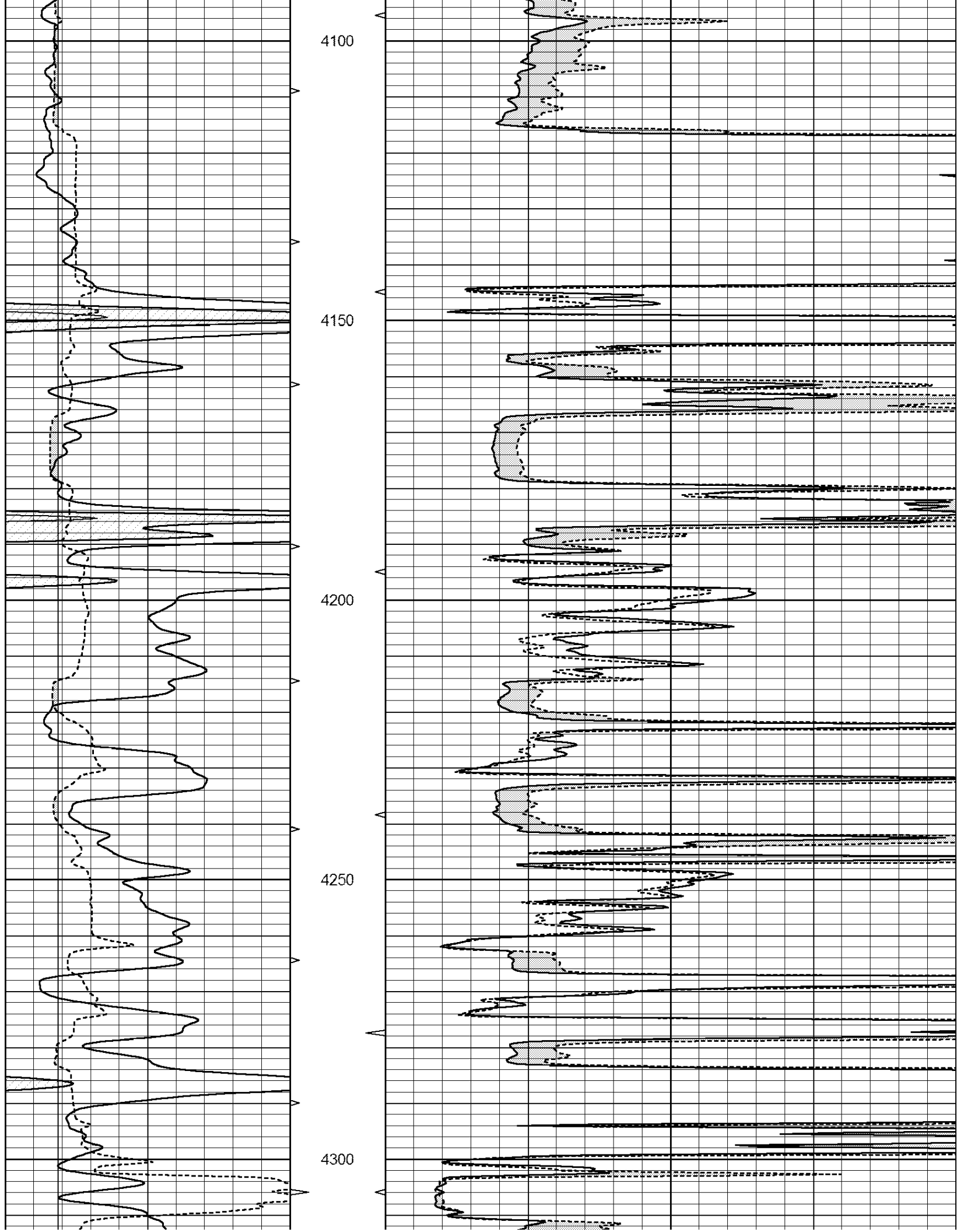
Comments

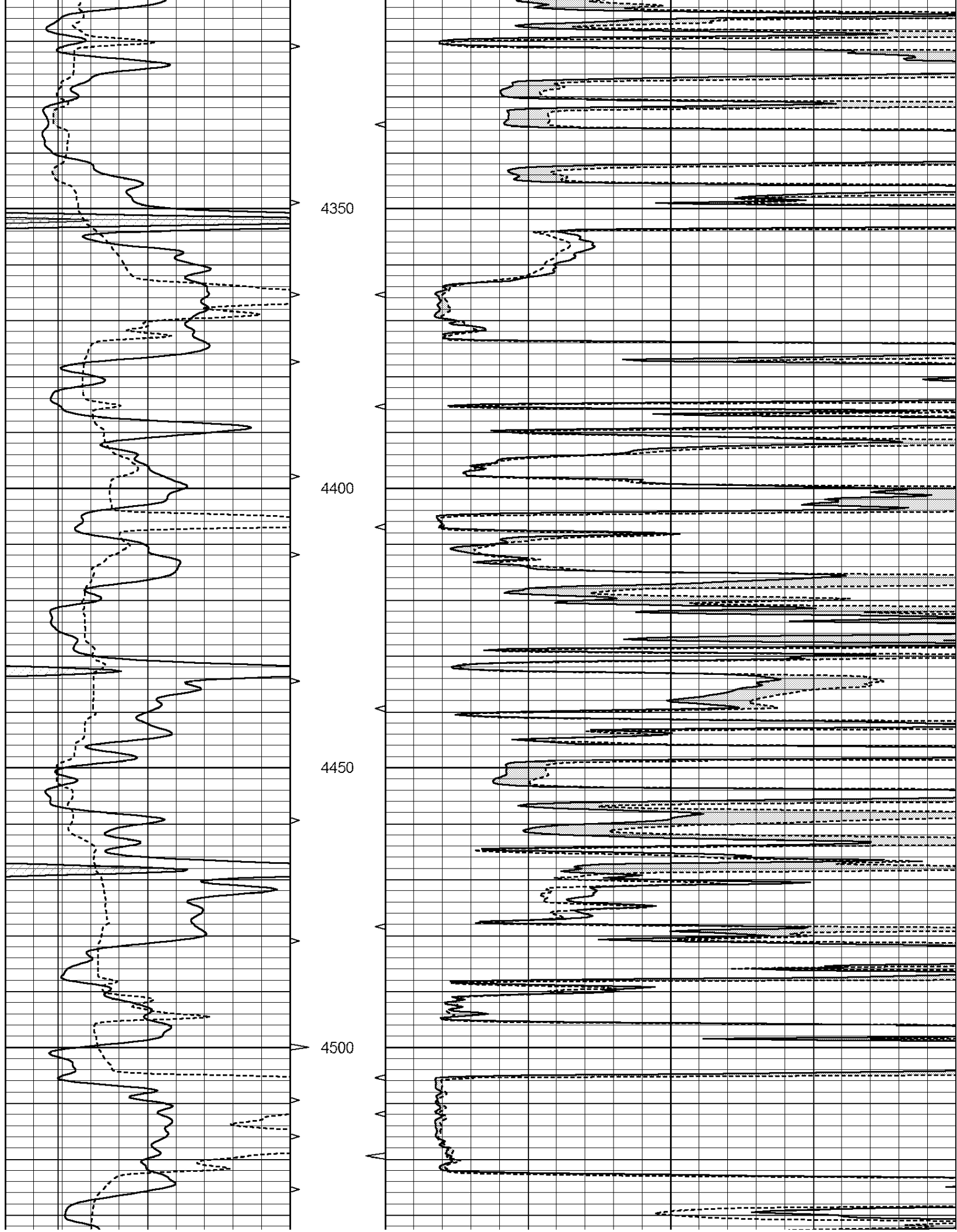
NABORS COMPLETION & PRODUCTION SERVICES
785-628-6395
THANK YOU FOR YOUR BUSINESS
DIRECTIONS: BREWSTER, KS - 12 MILES NORTH TO RD CC. - EAST 2 1/4 - NORTH INTO

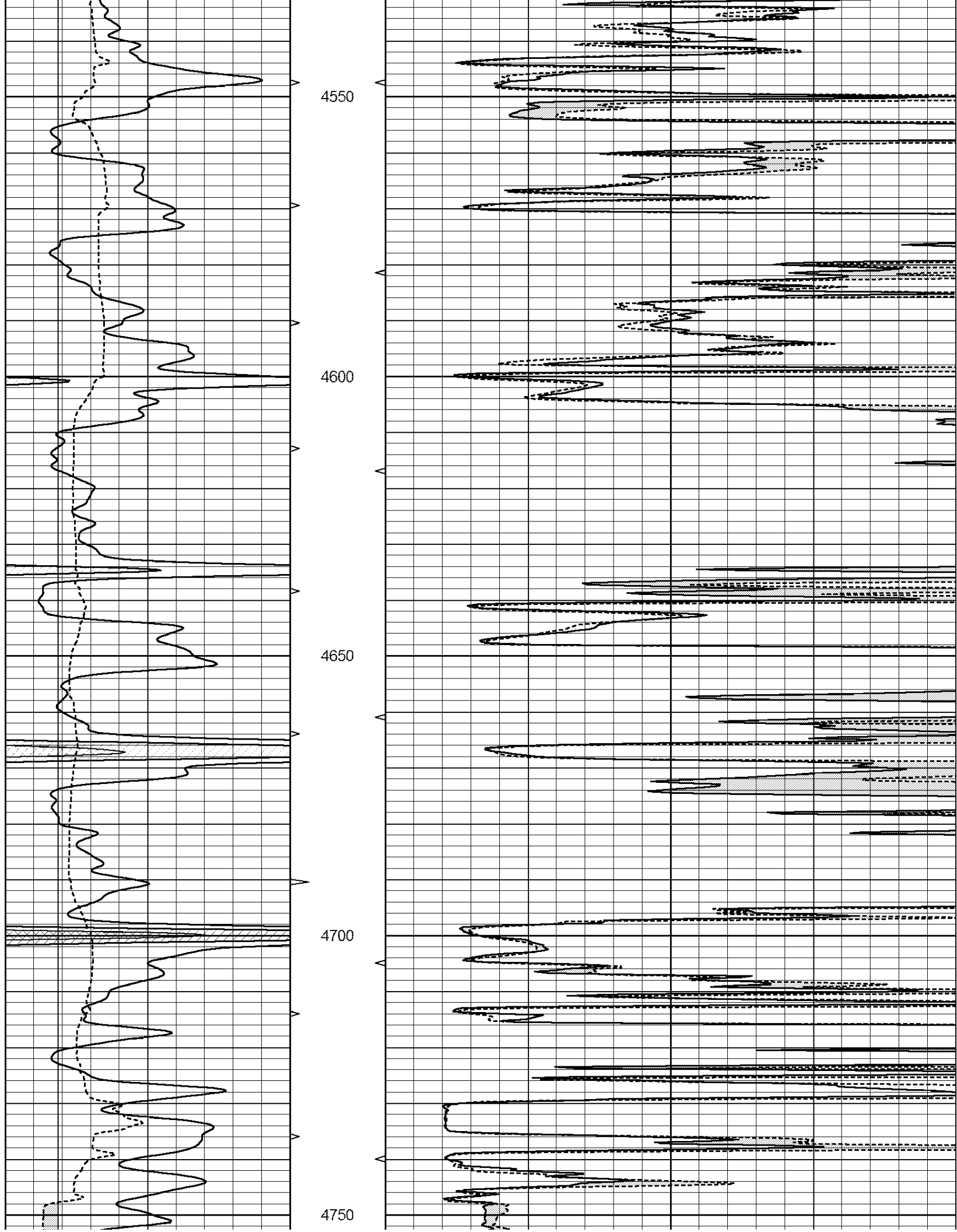
0	GAMMA RAY (GAPI)	150	ABHV	0	MEL1.5 (Ohm-m)	20
6	CALIPER (in)	16	10 (ft3)	0 0	MEL2.0 (Ohm-m)	20
			TBHV			
			0 (ft3) 10			

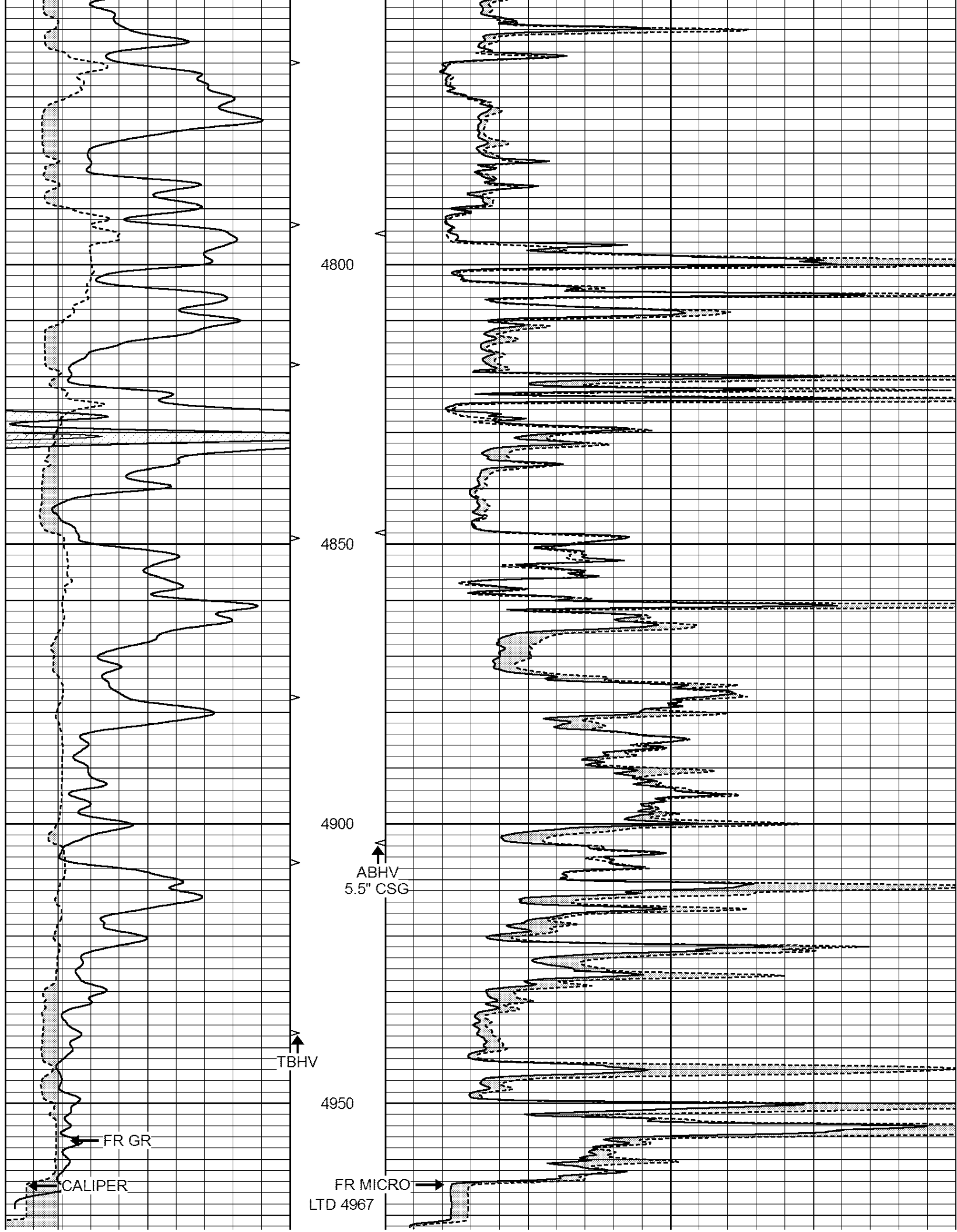












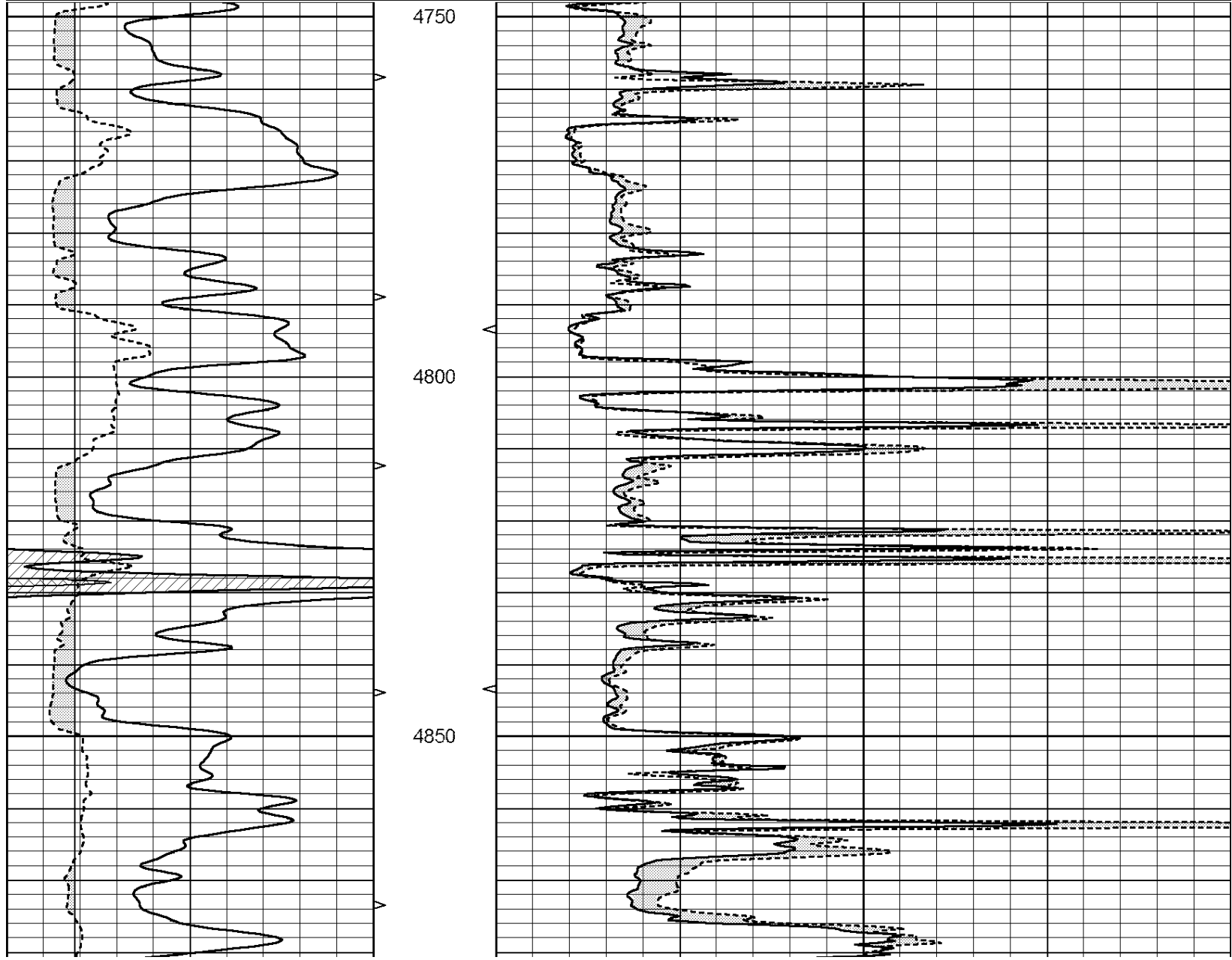
0	GAMMA RAY (GAPI)	150	ABHV	0	MEL1.5 (Ohm-m)	20
6	CALIPER (in)	16	10 (ft3)	0 0	MEL2.0 (Ohm-m)	20
			TBHV			
			0 (ft3)	10		

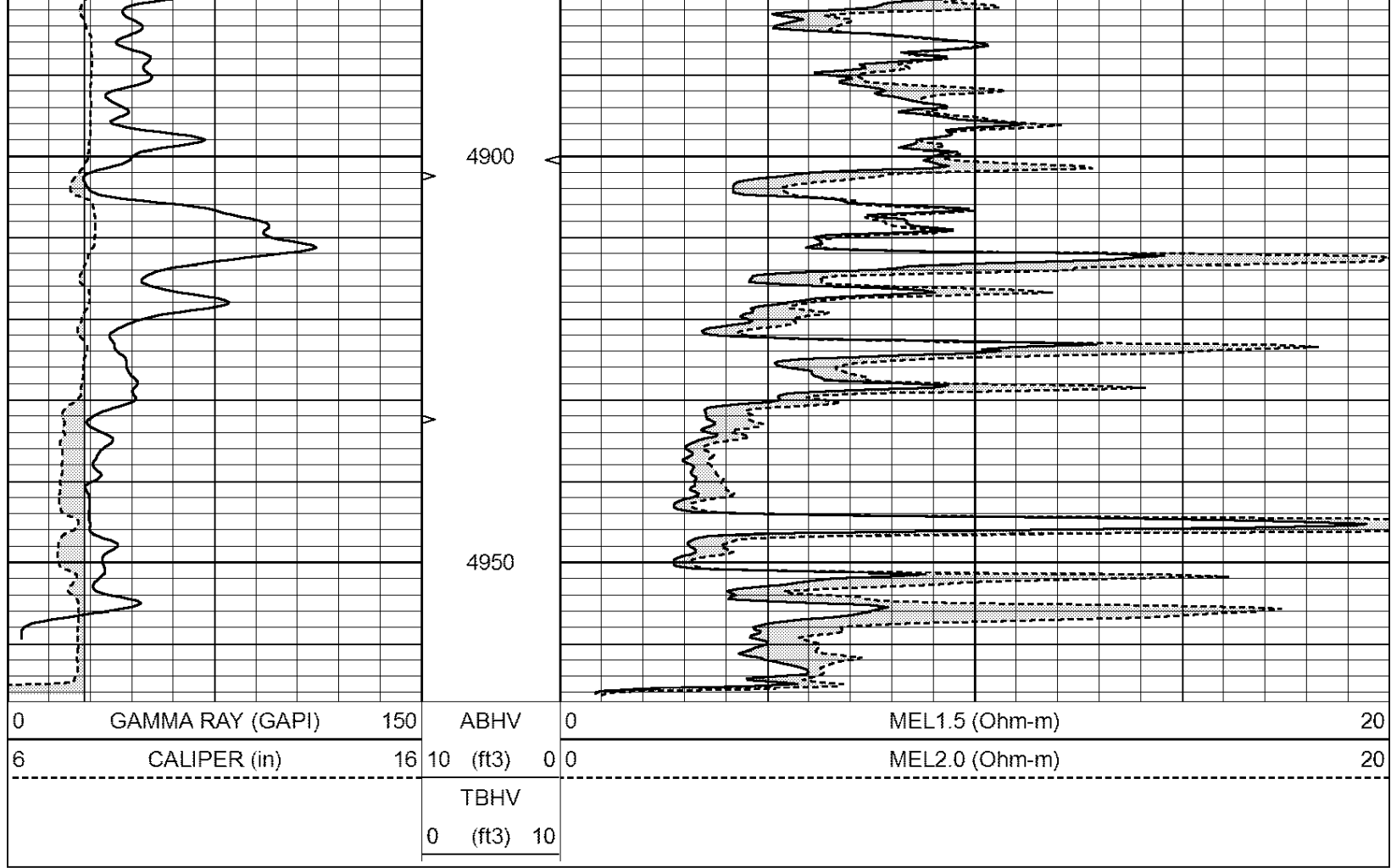


REPEAT SECTION

Database File: 26262ddn.db
 Dataset Pathname: pass8.3
 Presentation Format: _micro
 Dataset Creation: Tue Nov 25 21:57:08 2014 by Calc Open-Cased 090629
 Charted by: Depth in Feet scaled 1:240

0	GAMMA RAY (GAPI)	150	ABHV	0	MEL1.5 (Ohm-m)	20
6	CALIPER (in)	16	10 (ft3)	0 0	MEL2.0 (Ohm-m)	20
			TBHV			
			0 (ft3)	10		





Calibration Report

Database File: 26262ddn.db
 Dataset Pathname: pass9.2
 Dataset Creation: Tue Nov 25 22:14:11 2014 by Calc Open-Cased 090629

MICRO Calibration Report

Serial Number:	MICRO5	
Tool Model:	PROBE	
Performed:	Sat Aug 02 03:42:56 2014	
Caliper Calibration:	Gain=3.000	Offset=-5.700
References	Low Cal	High Cal
Readings	6.200	15.000
	3.737	5.660
1.5" Calibration:	Gain=25.000	Offset=0.850
References	Low Cal	High Cal
Readings	0.000	20.000
	0.025	1.009
2" Calibration:	Gain=25.398	Offset=1.000
References	Low Cal	High Cal
Readings	0.000	20.000
	0.014	0.802

Gamma Ray Calibration Report

Serial Number: GR2
 Tool Model: OPEN
 Performed: Tue Nov 25 21:32:24 2014

Performed:

Tue NOV 25 21:52:24 2014

Calibrator Value:	200.0	GAPI
Background Reading:	0.0	cps
Calibrator Reading:	740.0	cps
Sensitivity:	0.8000	GAPI/cps