



**COMPLETION
& PRODUCTION
SERVICES CO.**

**DUAL
INDUCTION
LOG**

Company GREAT PLAINS ENERGY, INC.
Well COLLEEN RALL TRUST #1-10
Field WILDCAT
County THOMAS State KANSAS

Company GREAT PLAINS ENERGY, INC.
Well COLLEEN RALL TRUST #1-10
Field WILDCAT
County THOMAS
State KANSAS

Location: API #: 15-193-20941-00-00
SEC 10 TWP 6S RGE 36W
280' FSL & 550' FWL
SE - SW - SW - SW
Permanent Datum GROUND LEVEL Elevation 3369
Log Measured From KELLY BUSHING1' A.G.L.
Drilling Measured From KELLY BUSHING
Other Services
CNL/CDL
MEL
Elevation
K.B. 3380
D.F. 3378
G.L. 3369

Date	11-25-14		
Run Number	ONE		
Depth Driller	4963		
Depth Logger	4967		
Bottom Logged Interval	4965		
Top Log Interval	00		
Casing Driller	8 5/8" @ 366'		
Casing Logger	366'		
Bit Size	7.875		
Type Fluid in Hole	CHEMICAL MUD	CHLORIDES 7,200 PPM	
Density / Viscosity	9.3 / 51		
pH / Fluid Loss	11.5 / 6.8		
Source of Sample	FLOWLINE		
Rm @ Meas. Temp	0.50 @ 95F		
Rmf @ Meas. Temp	0.38 @ 95F		
Rmc @ Meas. Temp	0.60 @ 95F		
Source of Rmf / Rmc	FLOWLINE		
Rm @ BHT	0.38 @ 125F		
Time Circulation Stopped	2 HOURS		
Time Logger on Bottom			
Maximum Recorded Temperature	125F		
Equipment Number	3802		
Location	HAYS, KS.		
Recorded By	IAN MABB		
Witnessed By	RICHARD BELL		

<<< Fold Here >>>

All interpretations are opinions based on inferences from electrical or other measurements and we cannot and do not guarantee the accuracy or correctness of any interpretation, and we shall not, except in the case of gross or willful negligence on our part, be liable or responsible for any loss, costs, damages, or expenses incurred or sustained by anyone resulting from any interpretation made by any of our officers, agents or employees. These interpretations are also subject to our general terms and conditions set out in our current Price Schedule.

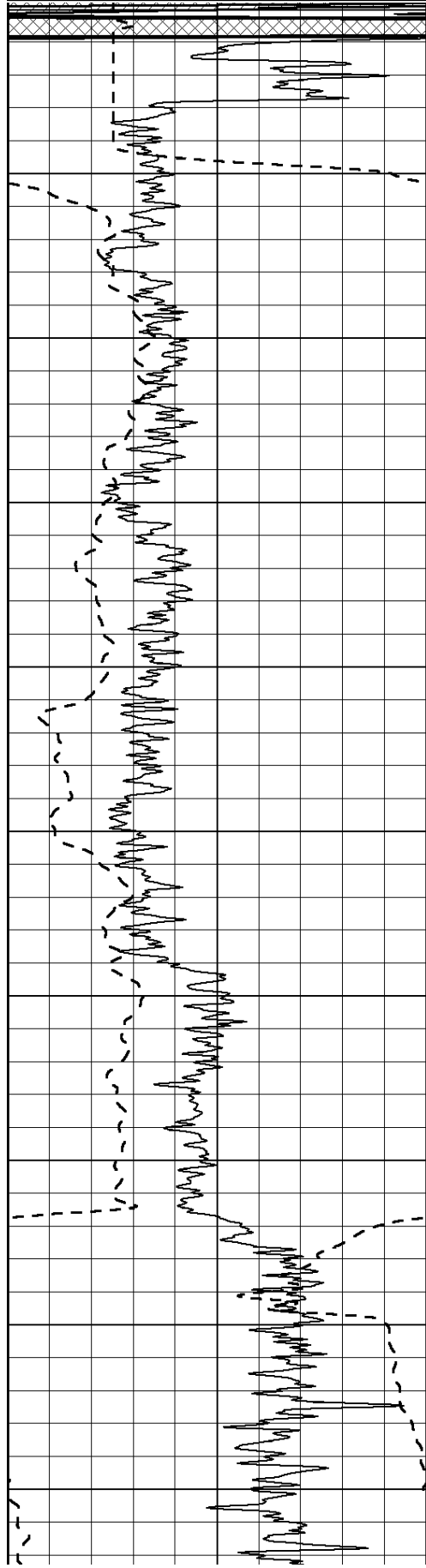
Comments

NABORS COMPLETION & PRODUCTION SERVICES
785-628-6395
THANK YOU FOR YOUR BUSINESS
DIRECTIONS: BREWSTER, KS - 12 MILES NORTH TO RD CC. - EAST 2 1/4 - NORTH INTO

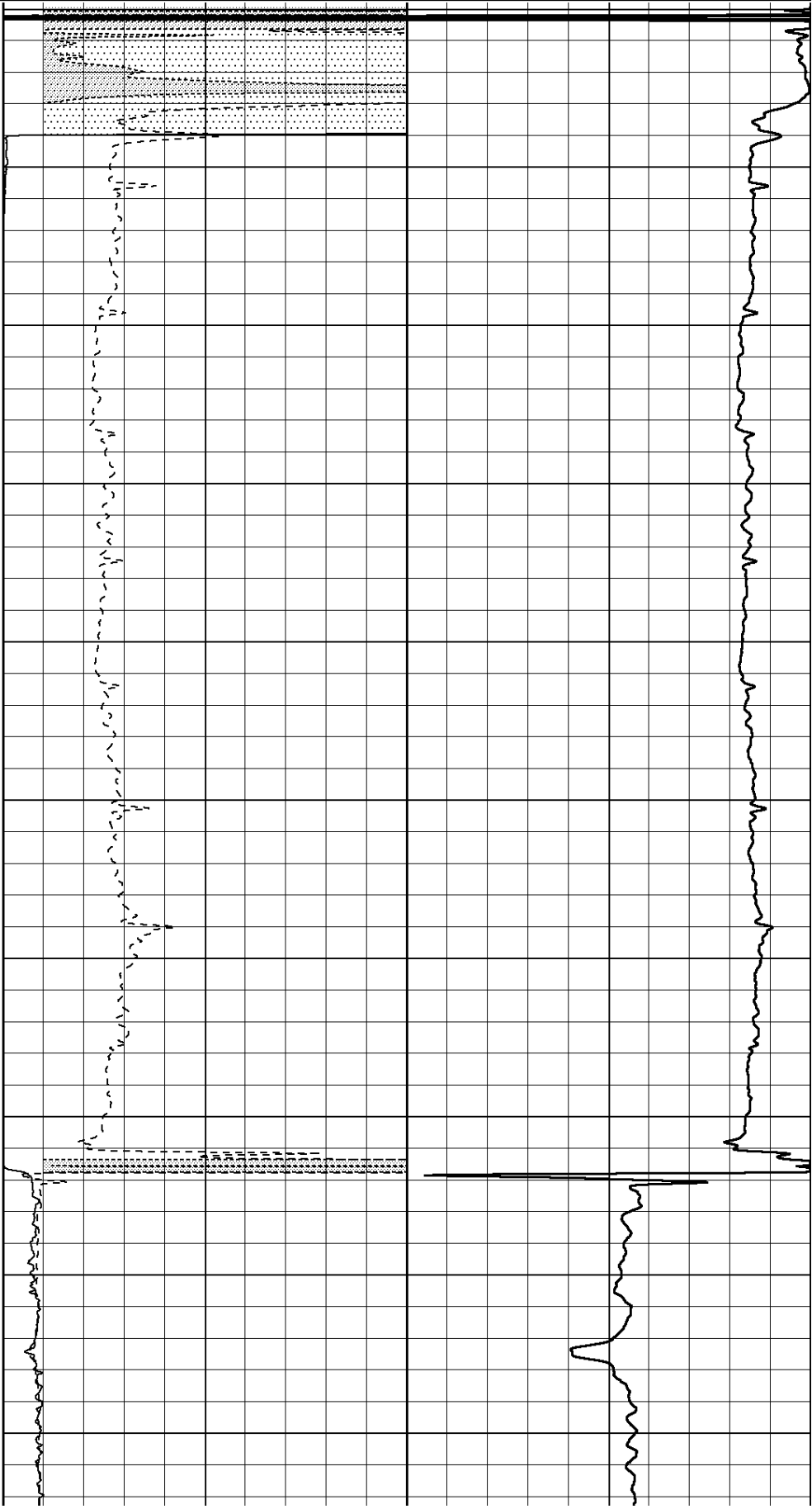
0	Gamma Ray (GAPI)	150
-100	SP (mV)	100

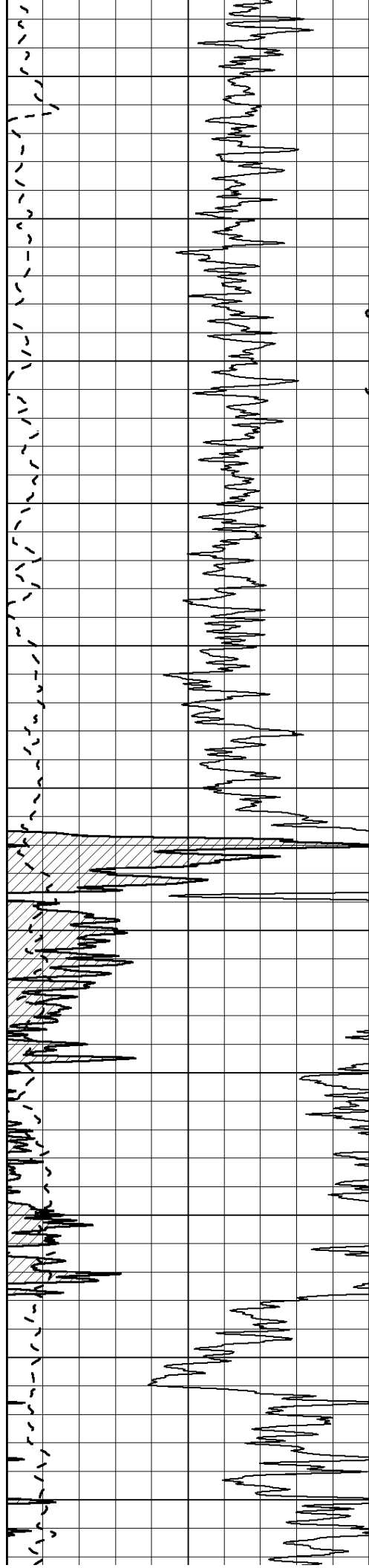
0	RLL3 (Ohm-m)	50
0	Deep Induction (Ohm-m)	50

1000	CILD (mmho/m)	0
50	RILD X10 (Ohm-m)	500
50	RLL3 X10 (Ohm-m)	500



0
50
100
150
200
250
300
350
400
450





500

550

600

650

700

750

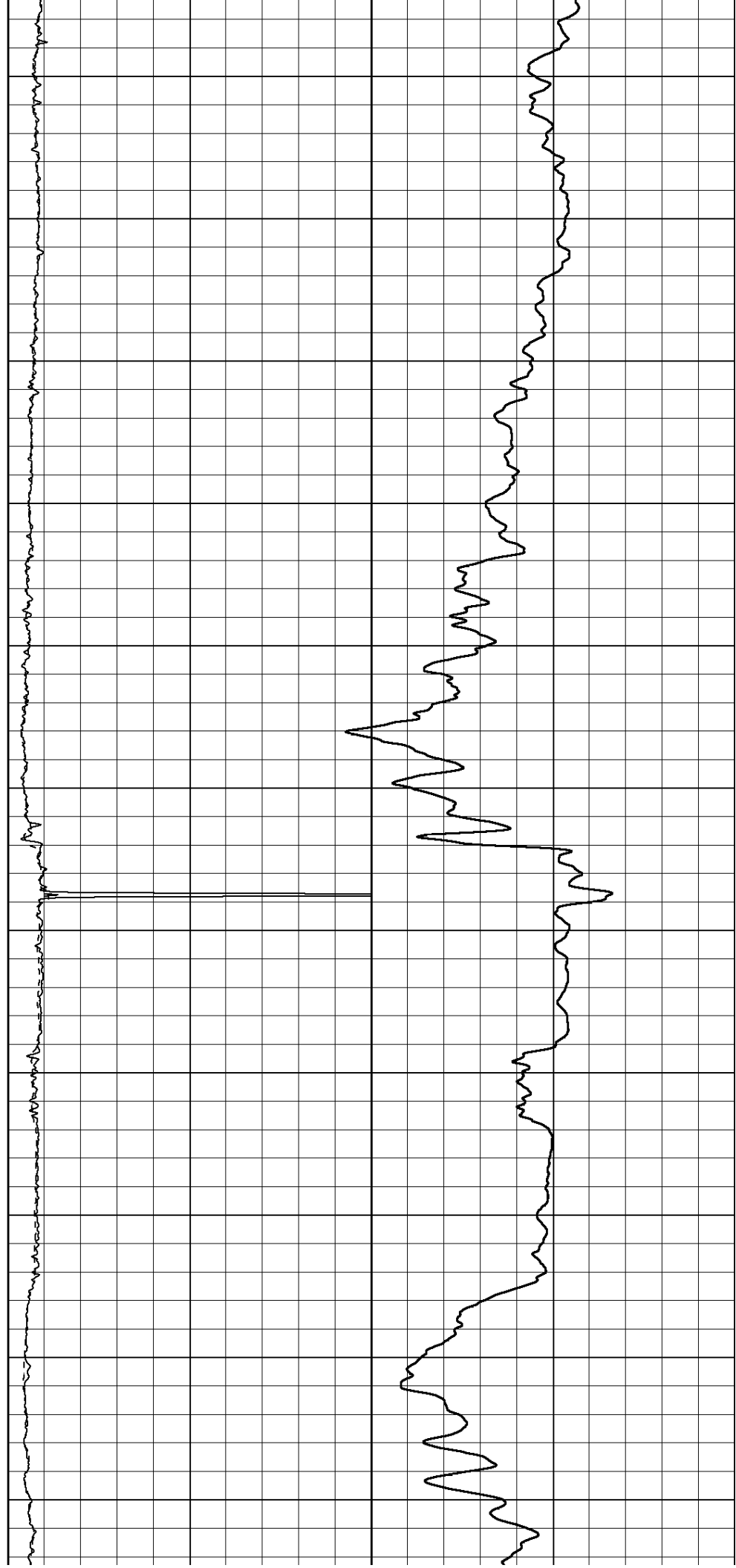
800

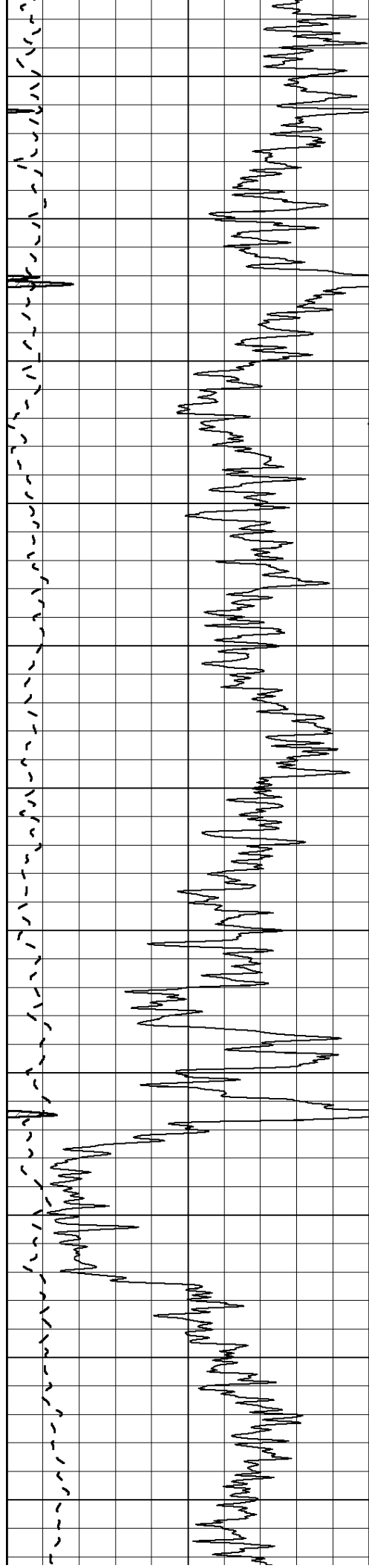
850

900

950

1000





1050

1100

1150

1200

1250

1300

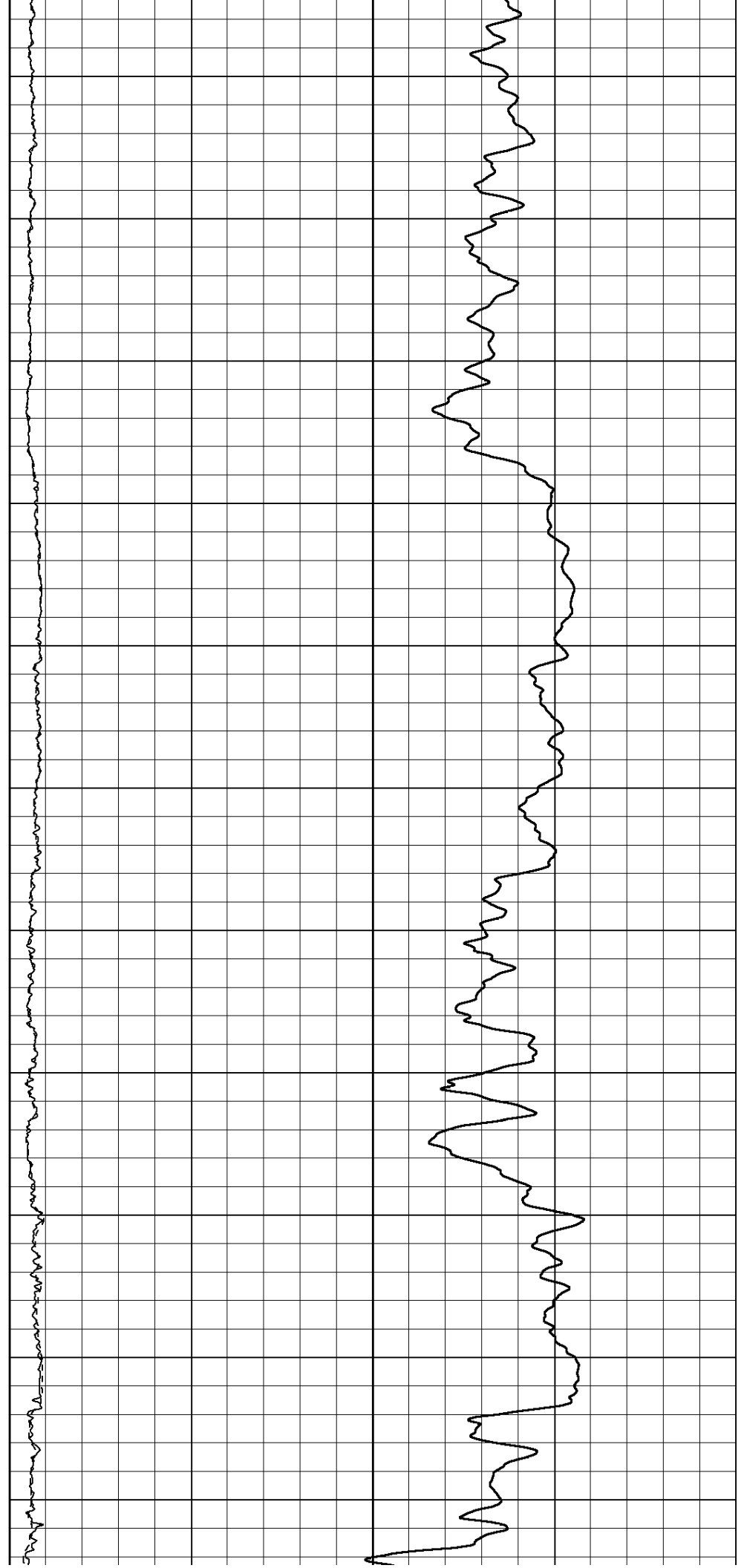
1350

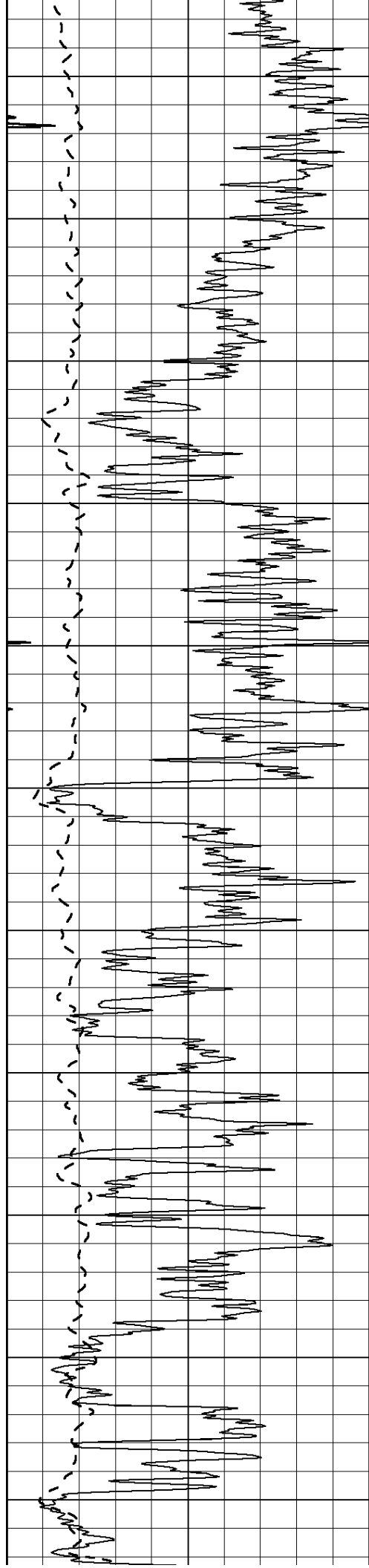
1400

1450

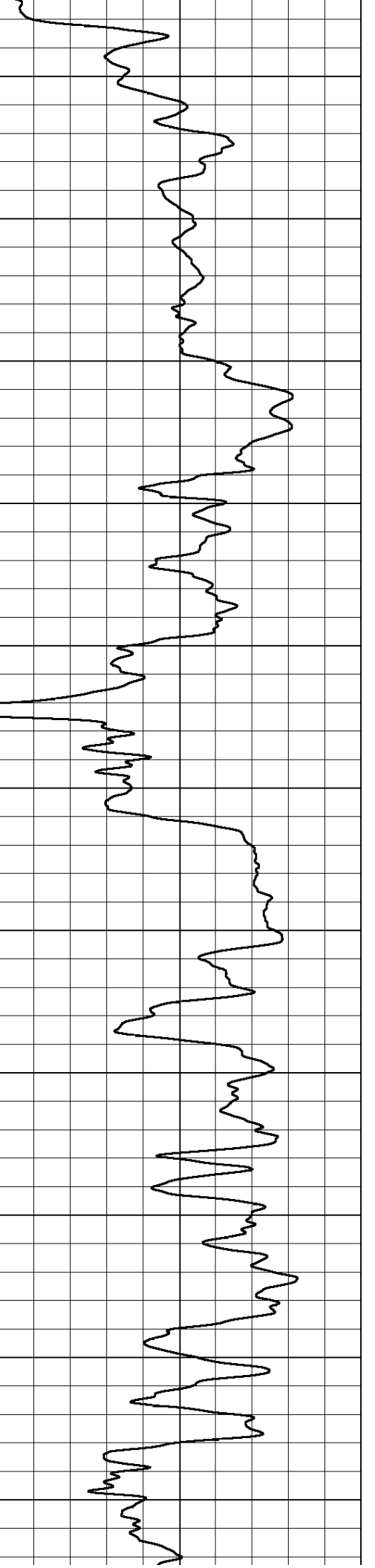
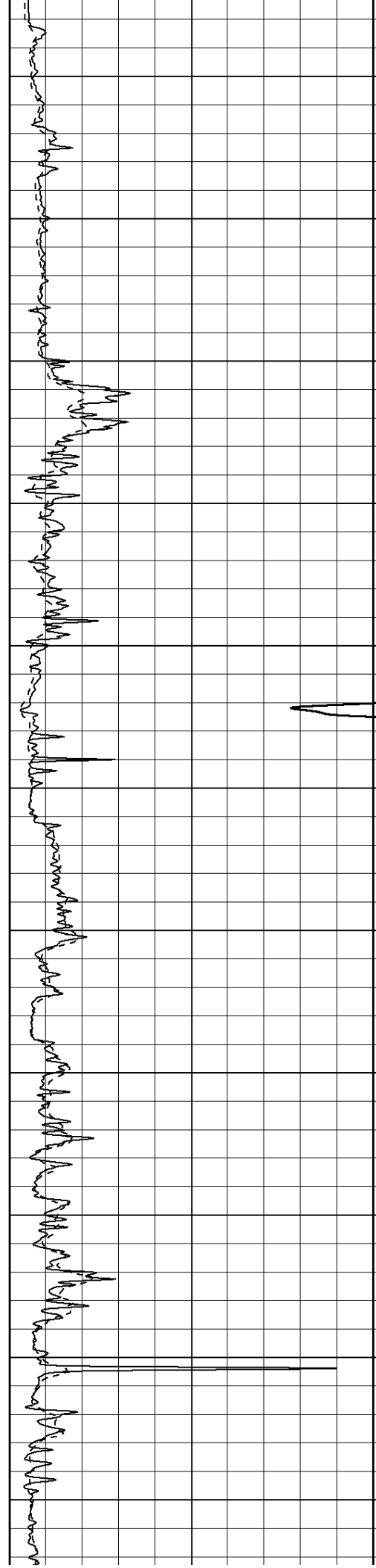
1500

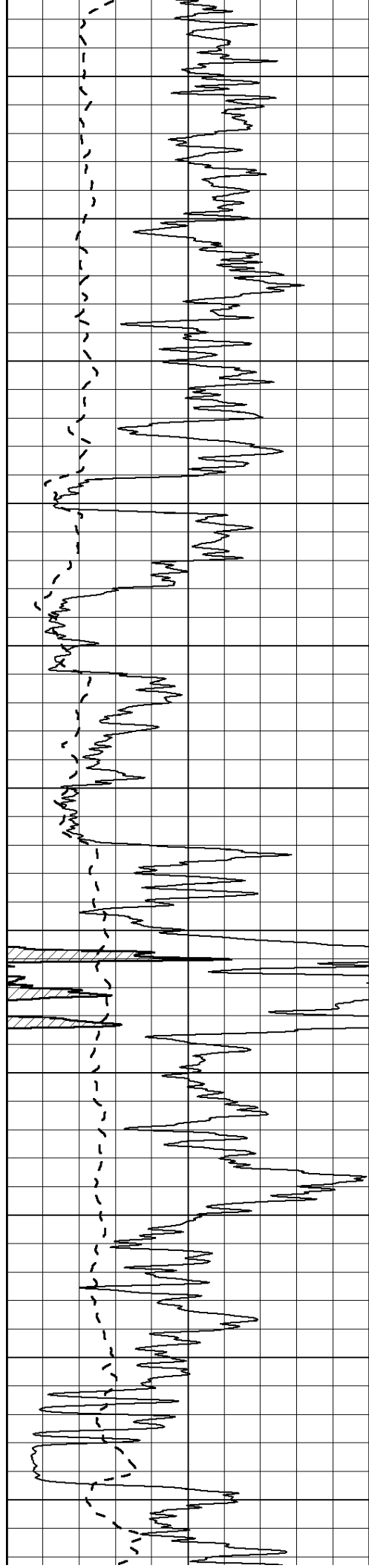
1550





1600
1650
1700
1750
1800
1850
1900
1950
2000
2050
2100





2150

2200

2250

2300

2350

2400

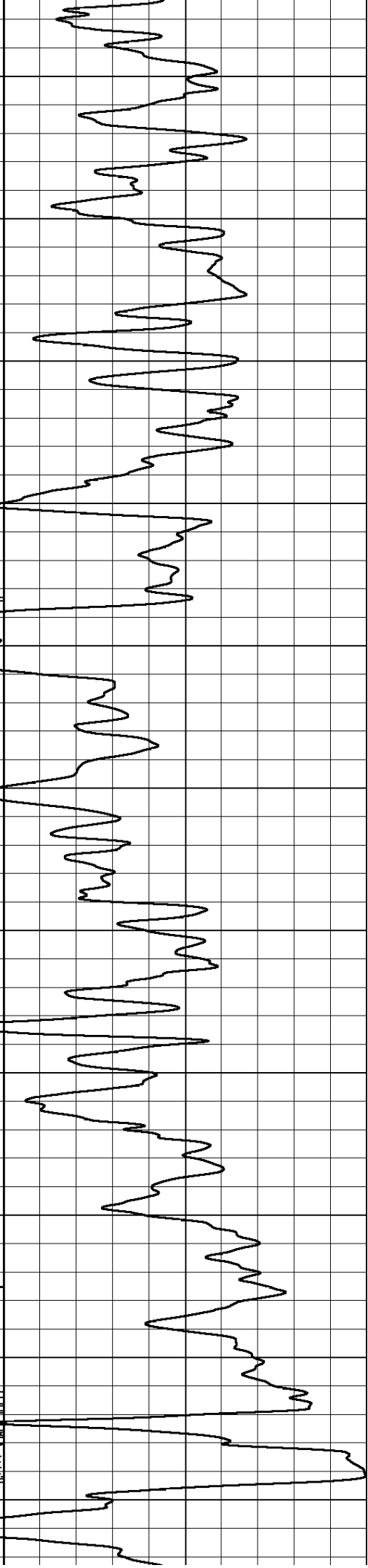
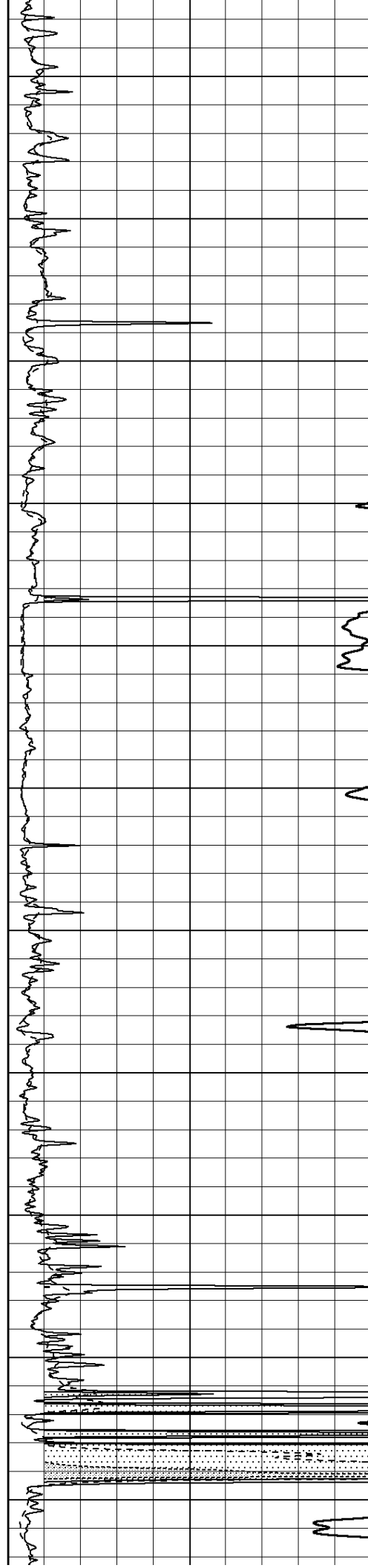
2450

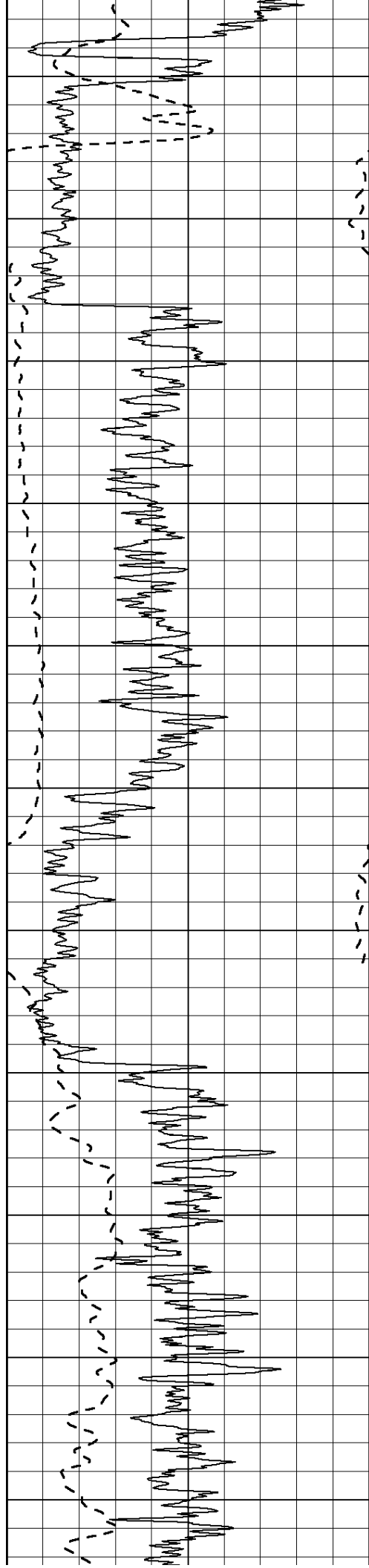
2500

2550

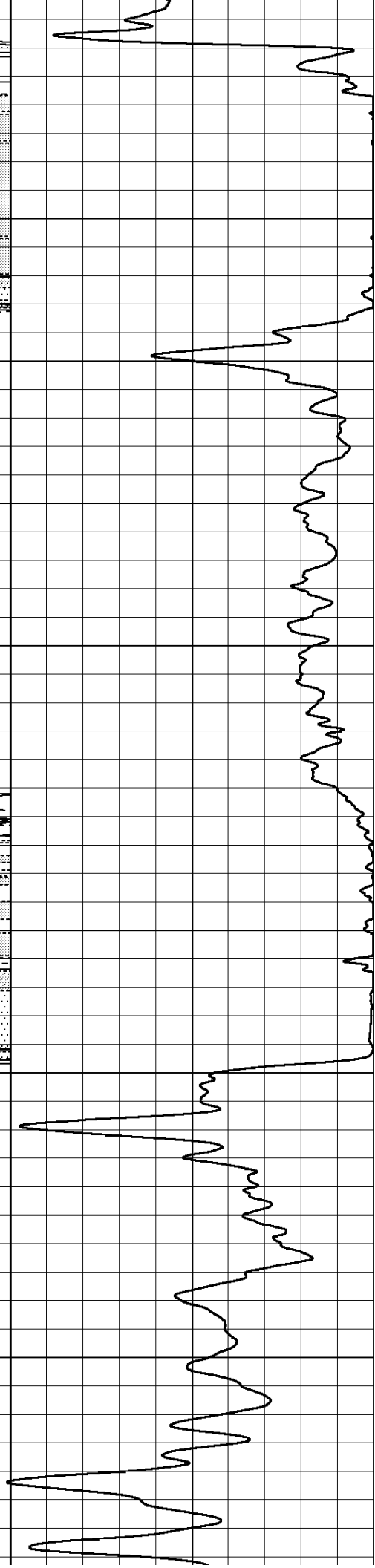
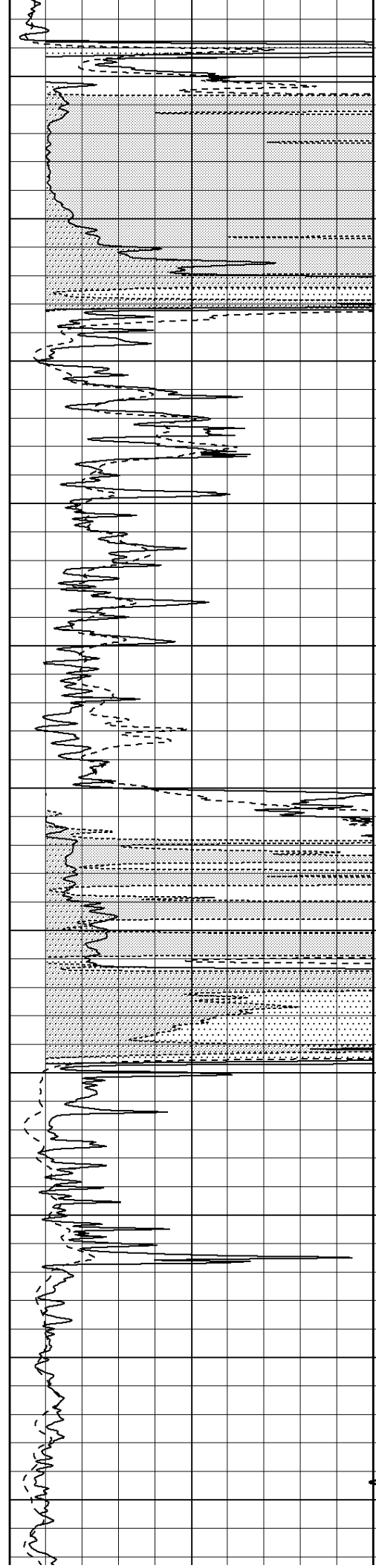
2600

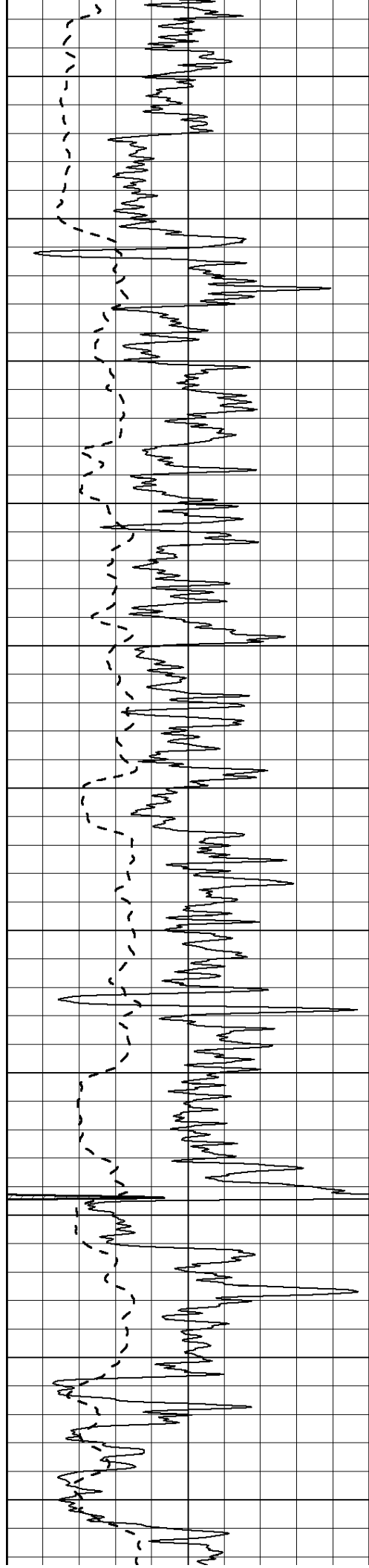
2650



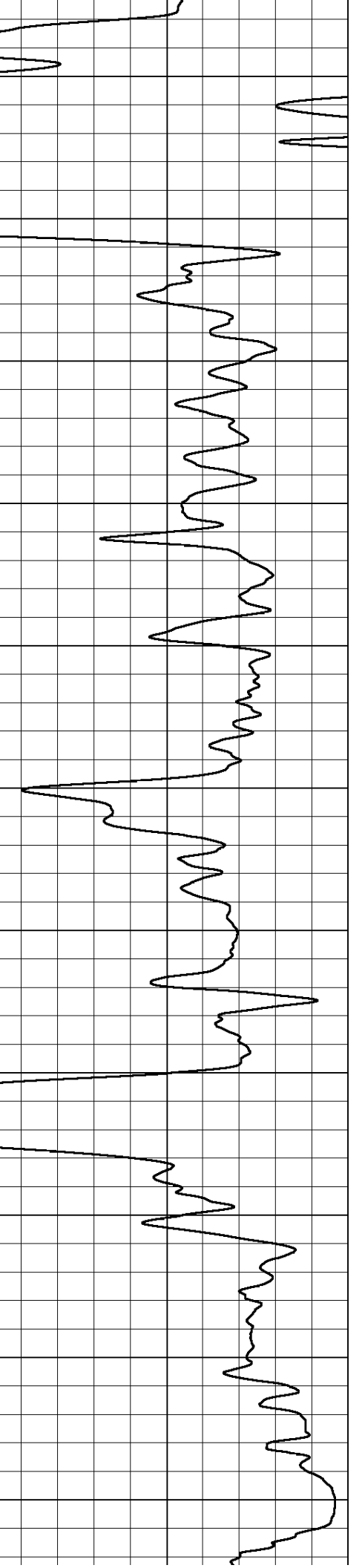
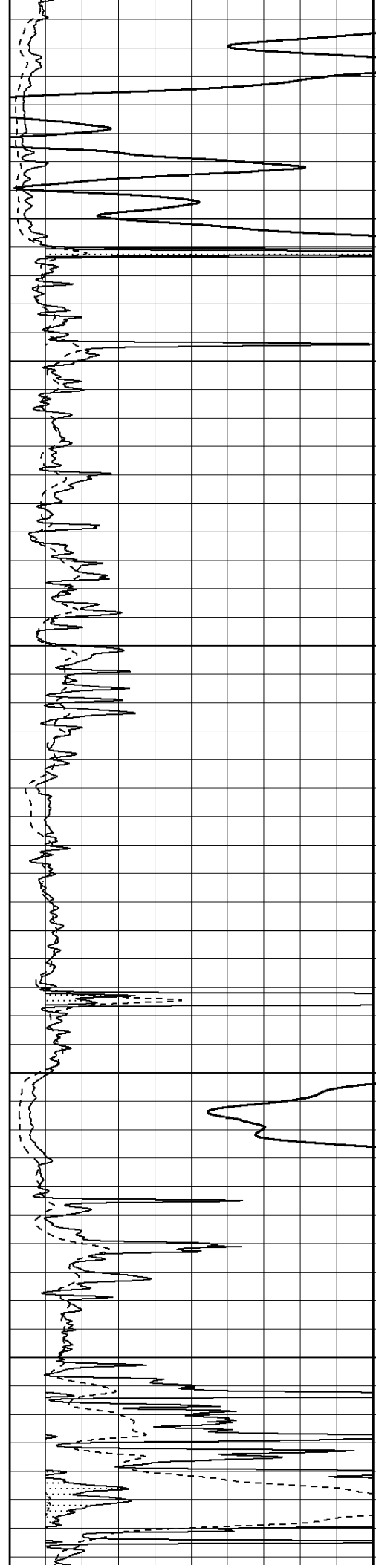


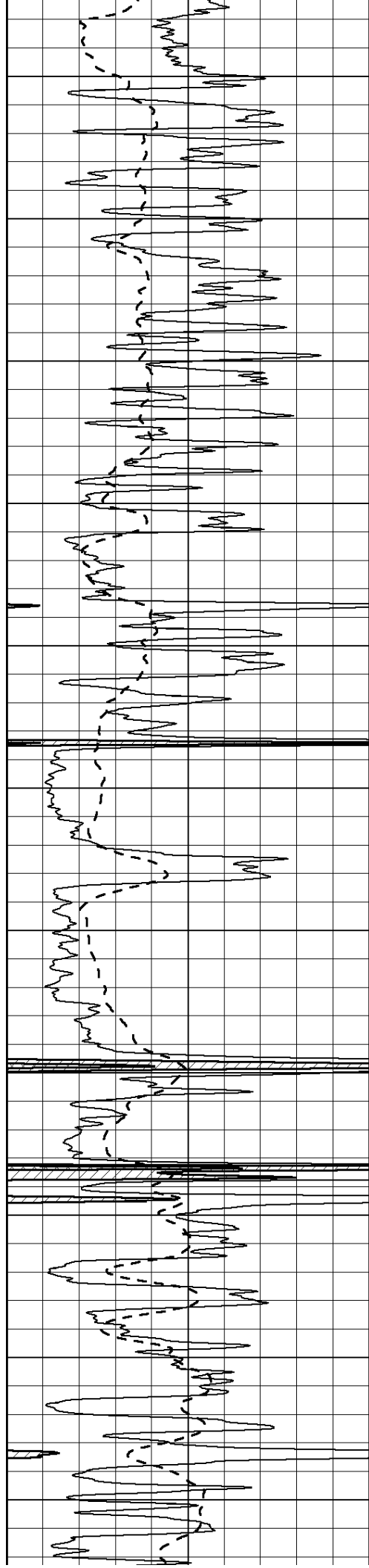
2700
2750
2800
2850
2900
2950
3000
3050
3100
3150
3200





3250
3300
3350
3400
3450
3500
3550
3600
3650
3700
3750





3800

3850

3900

3950

4000

4050

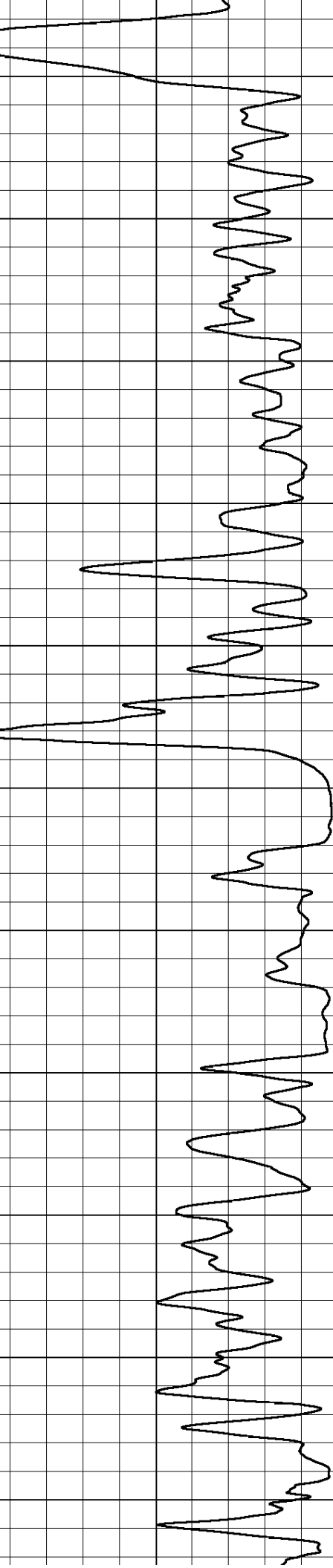
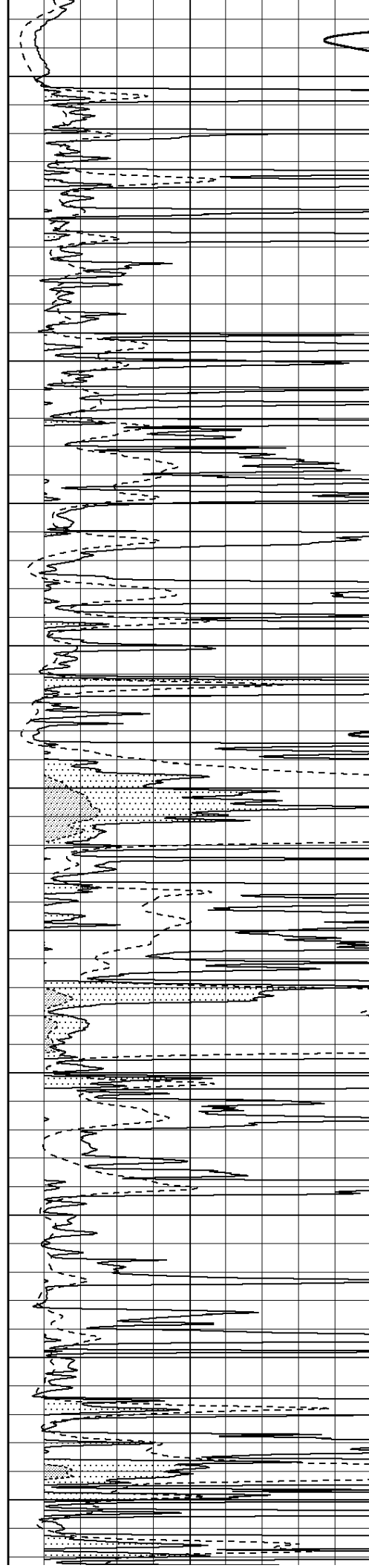
4100

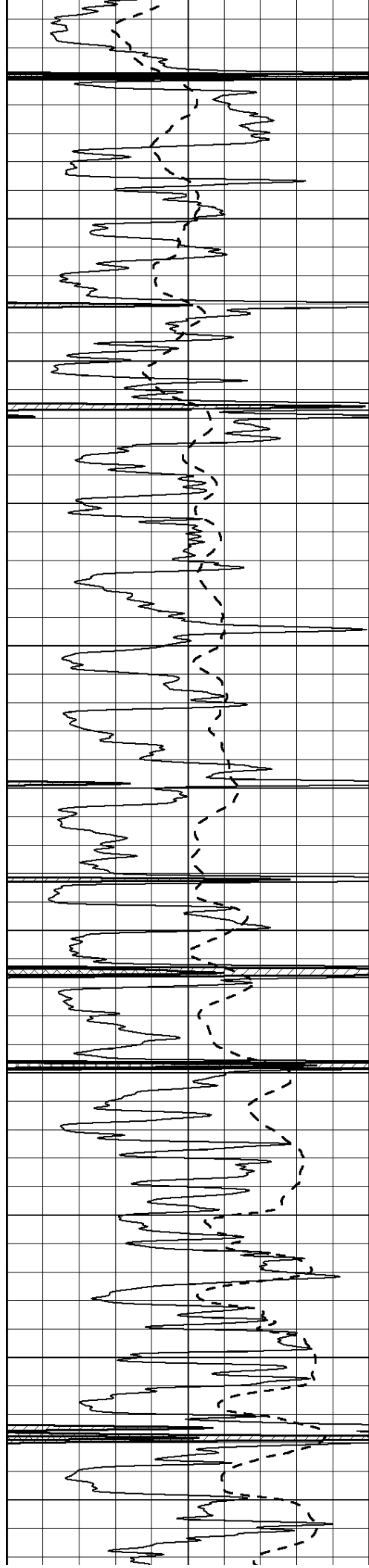
4150

4200

4250

4300





4350

4400

4450

4500

4550

4600

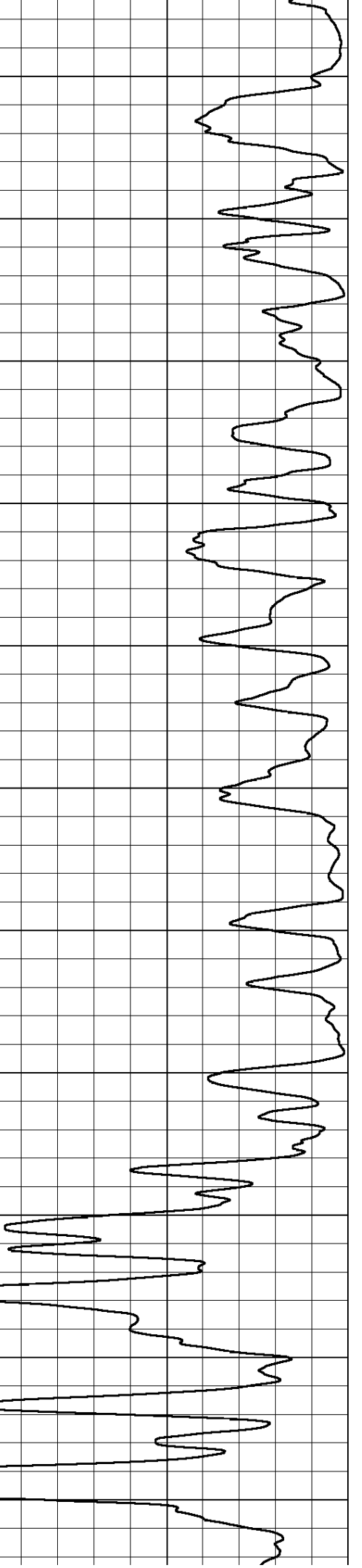
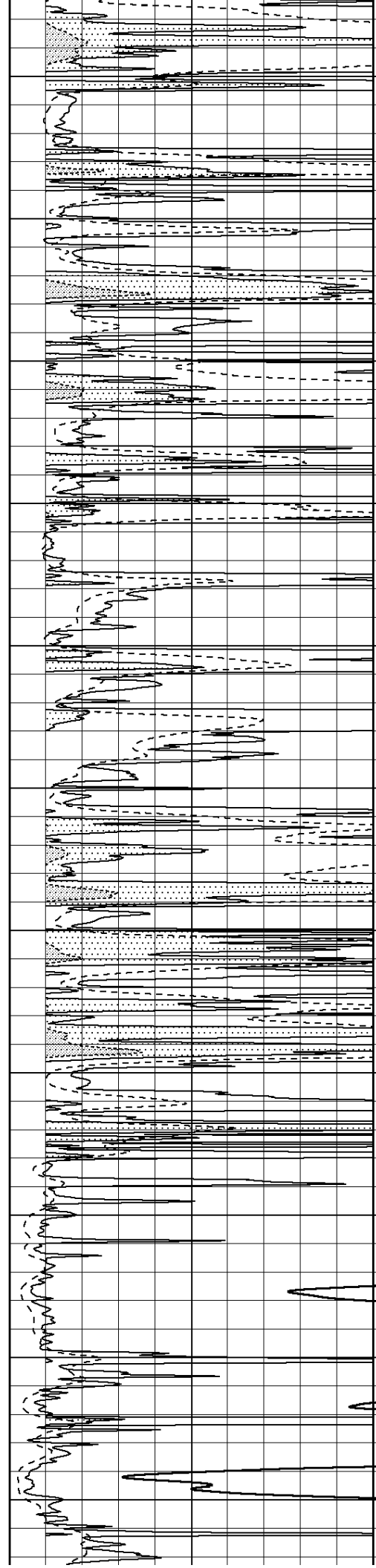
4650

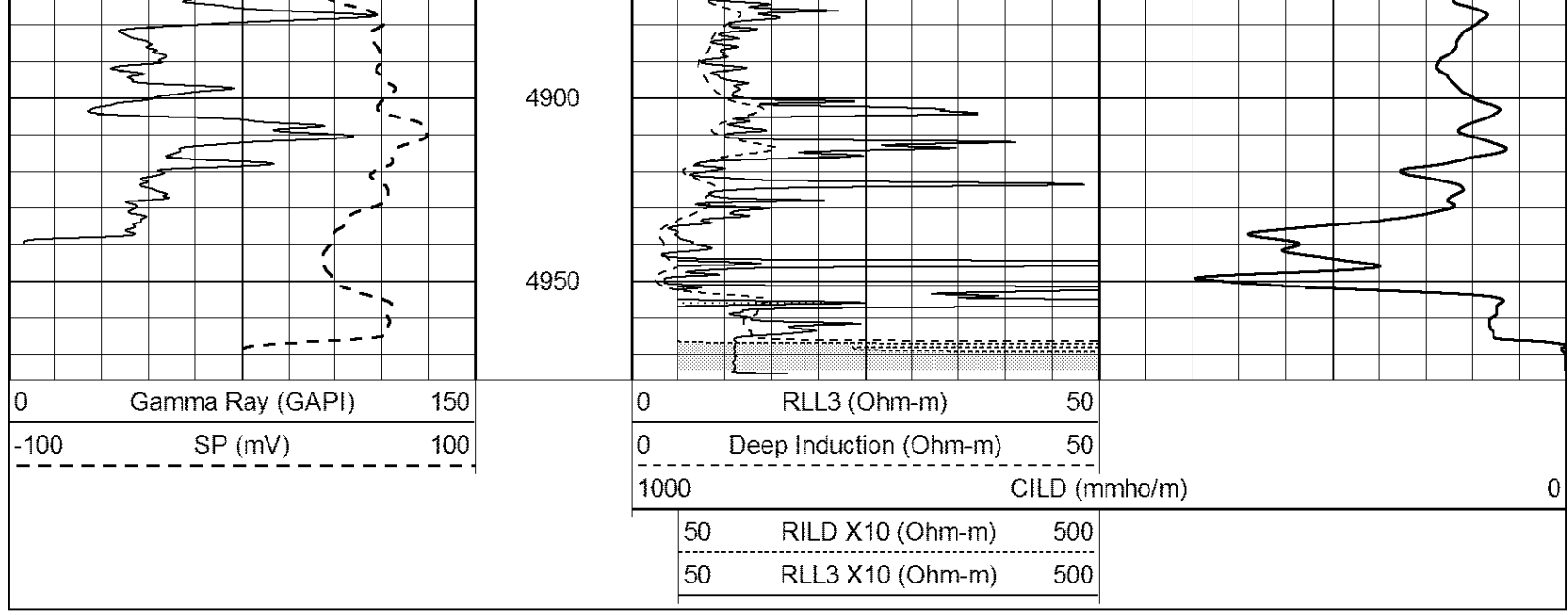
4700

4750

4800

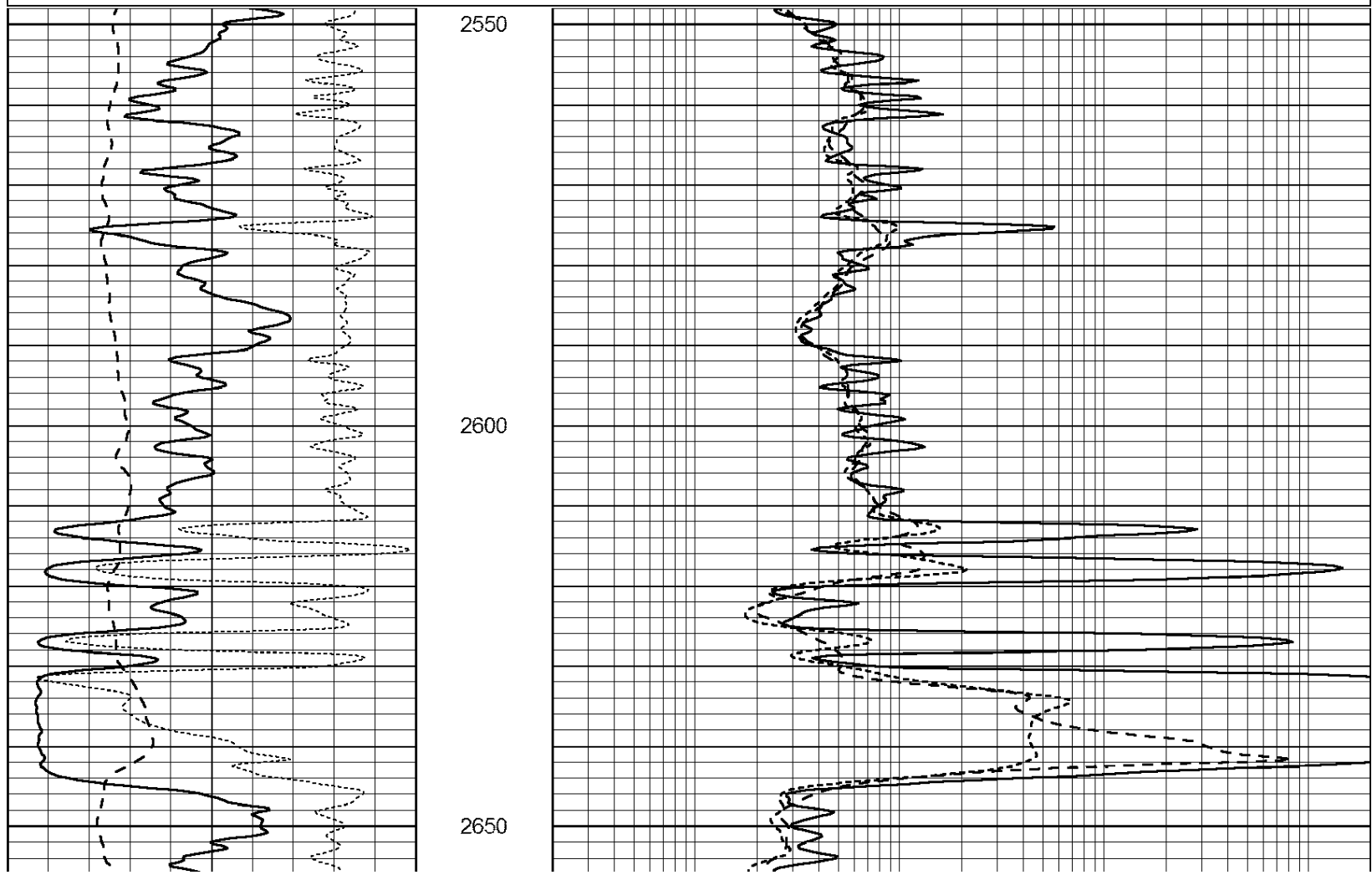
4850

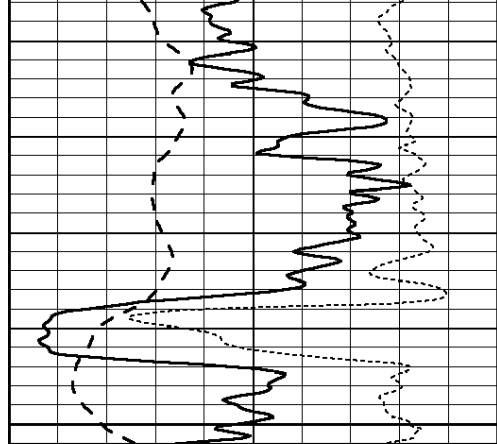




Database File: 26262ddn.db
 Dataset Pathname: pass6.2
 Presentation Format: _dil
 Dataset Creation: Tue Nov 25 20:33:11 2014 by Calc Open-Cased 090629
 Charted by: Depth in Feet scaled 1:240

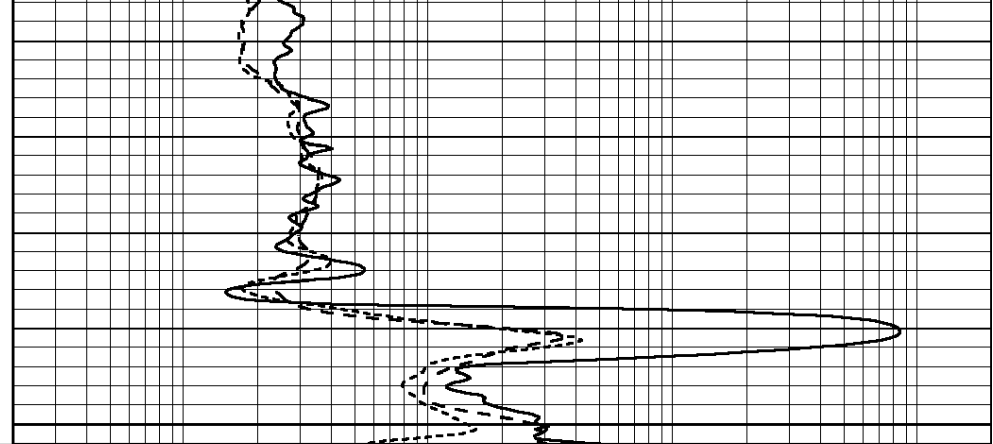
0	GAMMA RAY (GAPI)	150	0.2	SHALLOW GUARD (Ohm-m)	2000
-100	SP (mV)	100	0.2	MEDIUM INDUCTION (Ohm-m)	2000
-250	Rxo/Rt	50	0.2	DEEP INDUCTION (Ohm-m)	2000





2700

0	GAMMA RAY (GAPI)	150
-100	SP (mV)	100
-250	Rxo/Rt	50

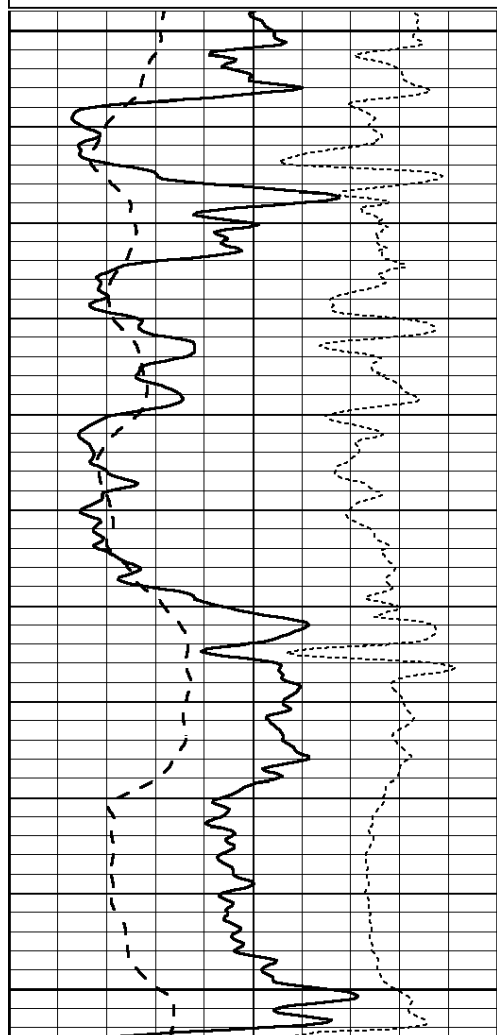


0.2	SHALLOW GUARD (Ohm-m)	2000
0.2	MEDIUM INDUCTION (Ohm-m)	2000
0.2	DEEP INDUCTION (Ohm-m)	2000

Database File: 26262ddn.db
 Dataset Pathname: pass6.1
 Presentation Format: _dil
 Dataset Creation: Tue Nov 25 19:54:19 2014 by Calc Open-Cased 090629
 Charted by: Depth in Feet scaled 1:240

0	GAMMA RAY (GAPI)	150
-100	SP (mV)	100
-250	Rxo/Rt	50

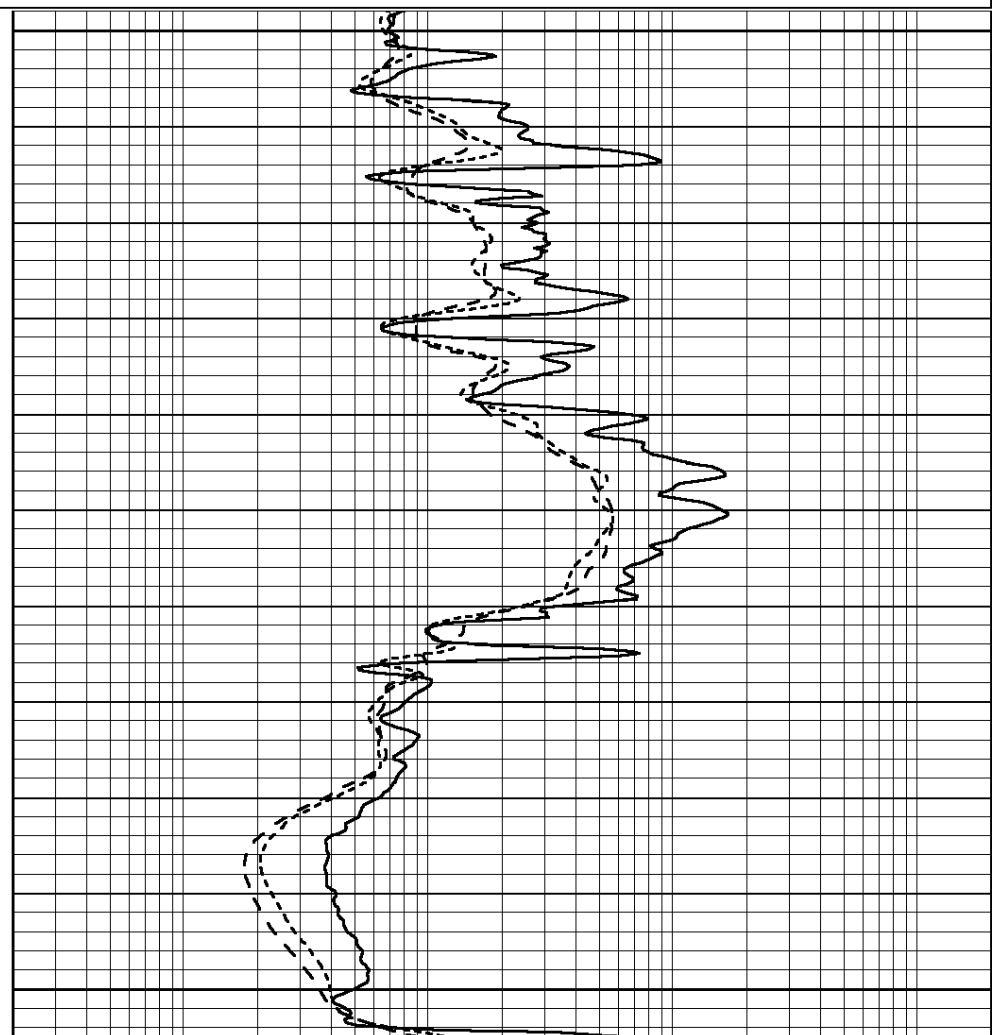
0.2	SHALLOW GUARD (Ohm-m)	2000
0.2	MEDIUM INDUCTION (Ohm-m)	2000
0.2	DEEP INDUCTION (Ohm-m)	2000

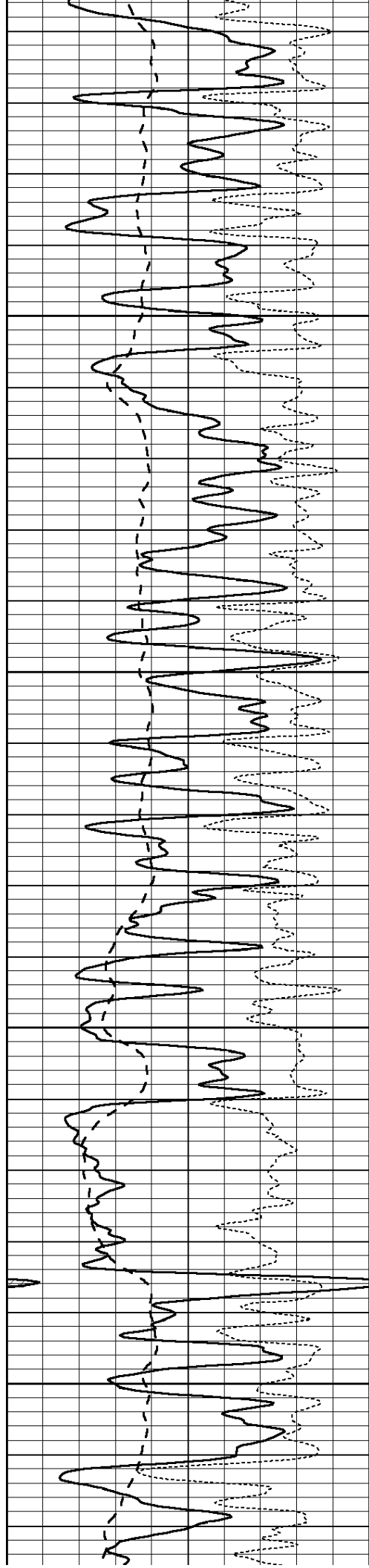


3700

3750

3800



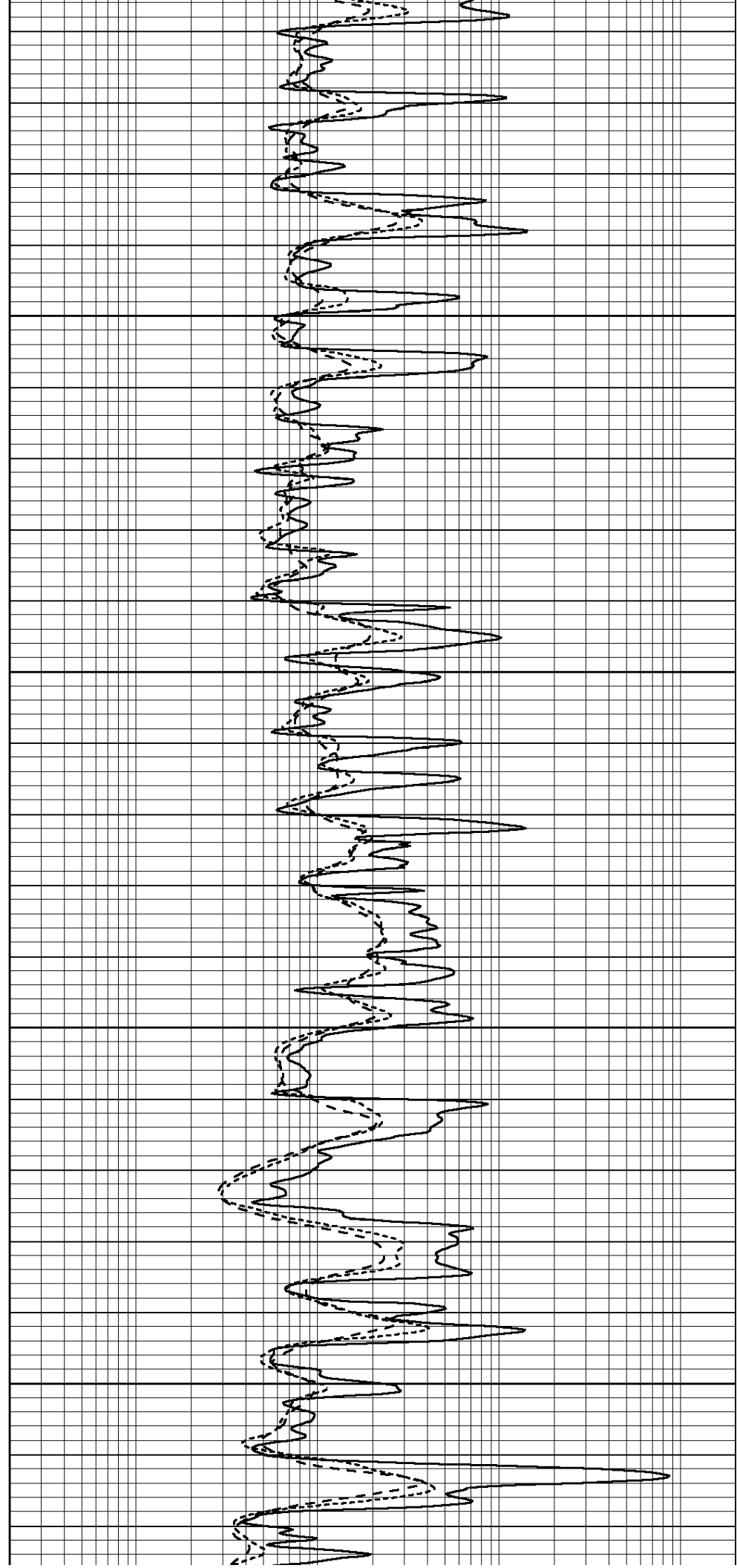


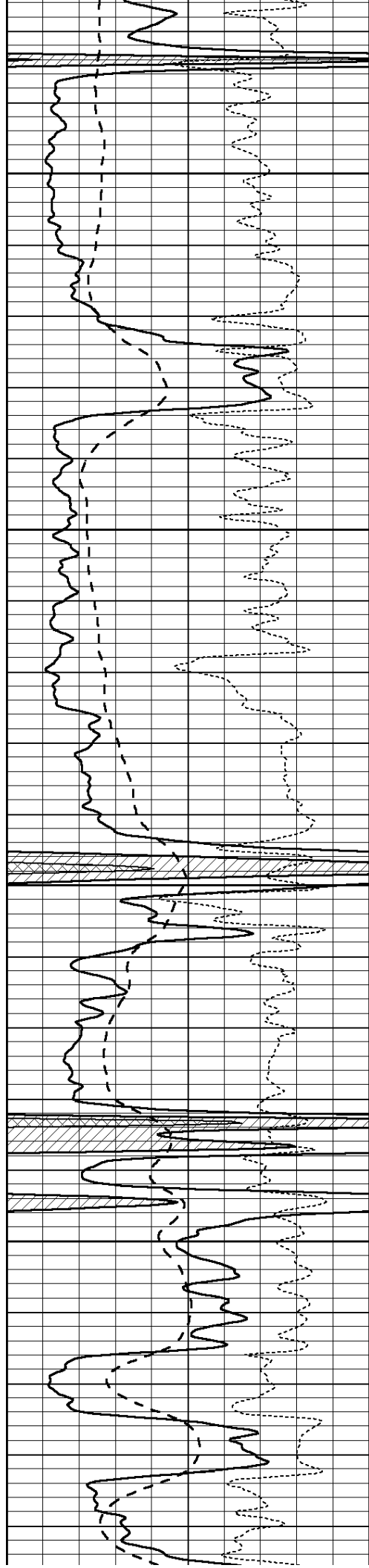
3850

3900

3950

4000



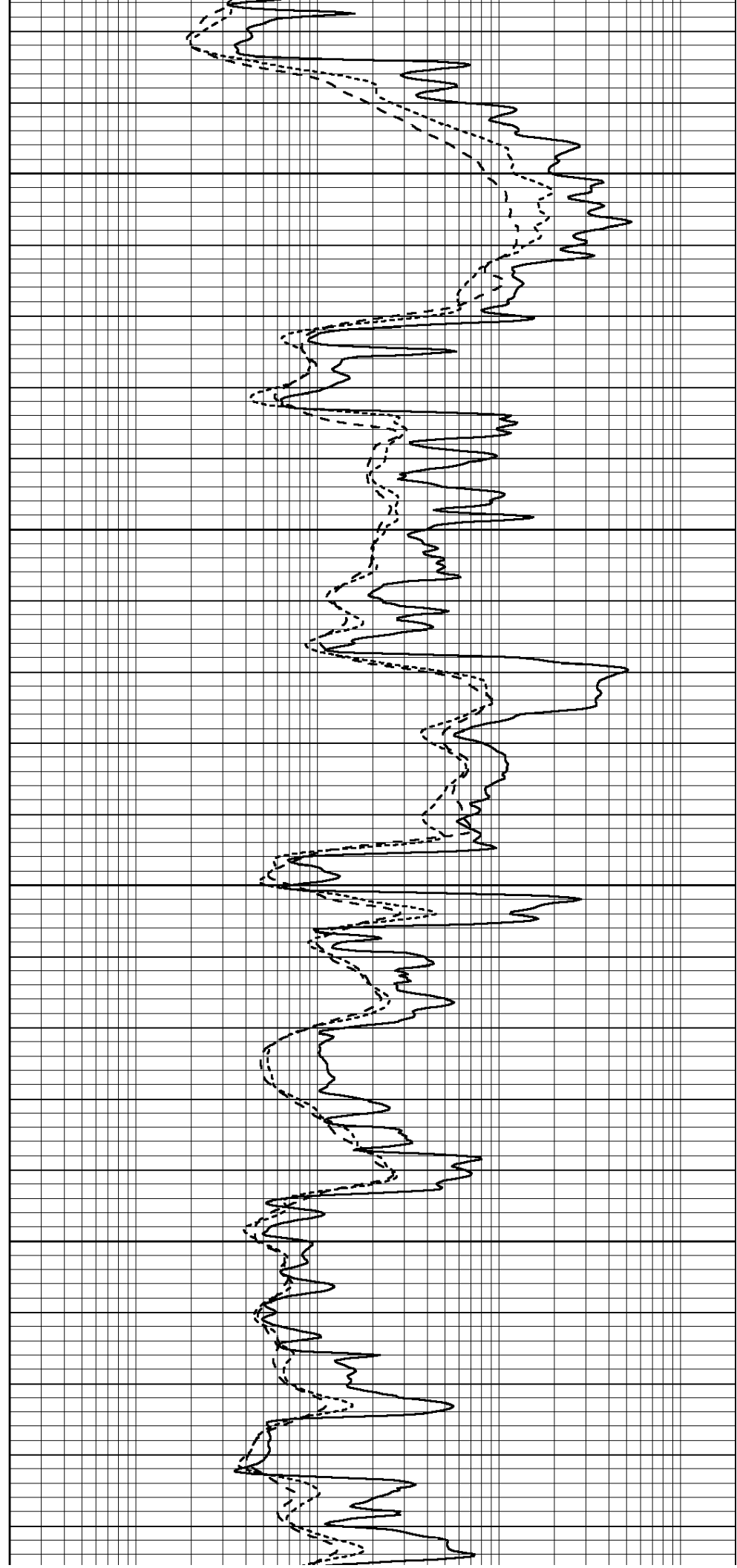


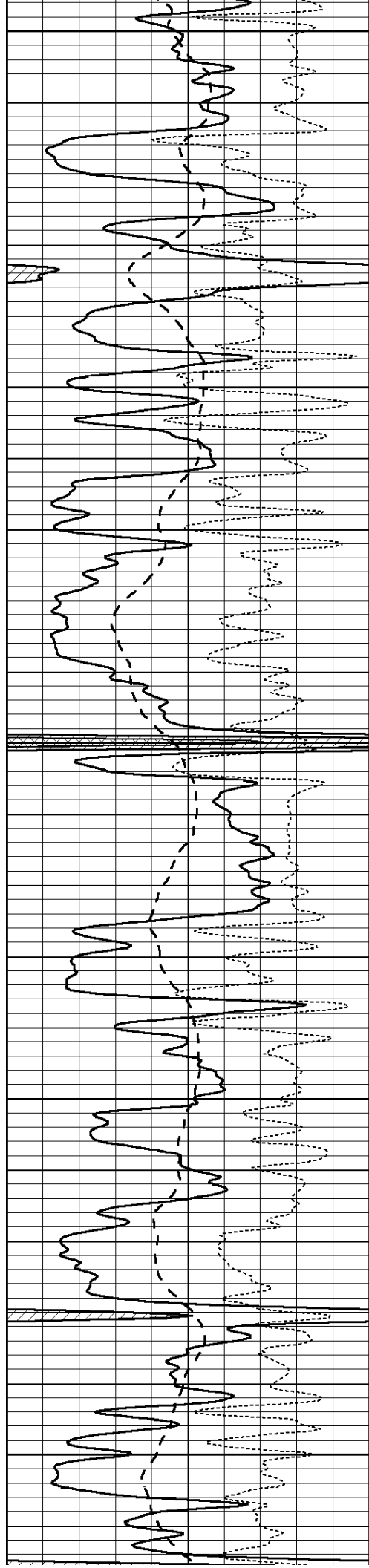
4050

4100

4150

4200





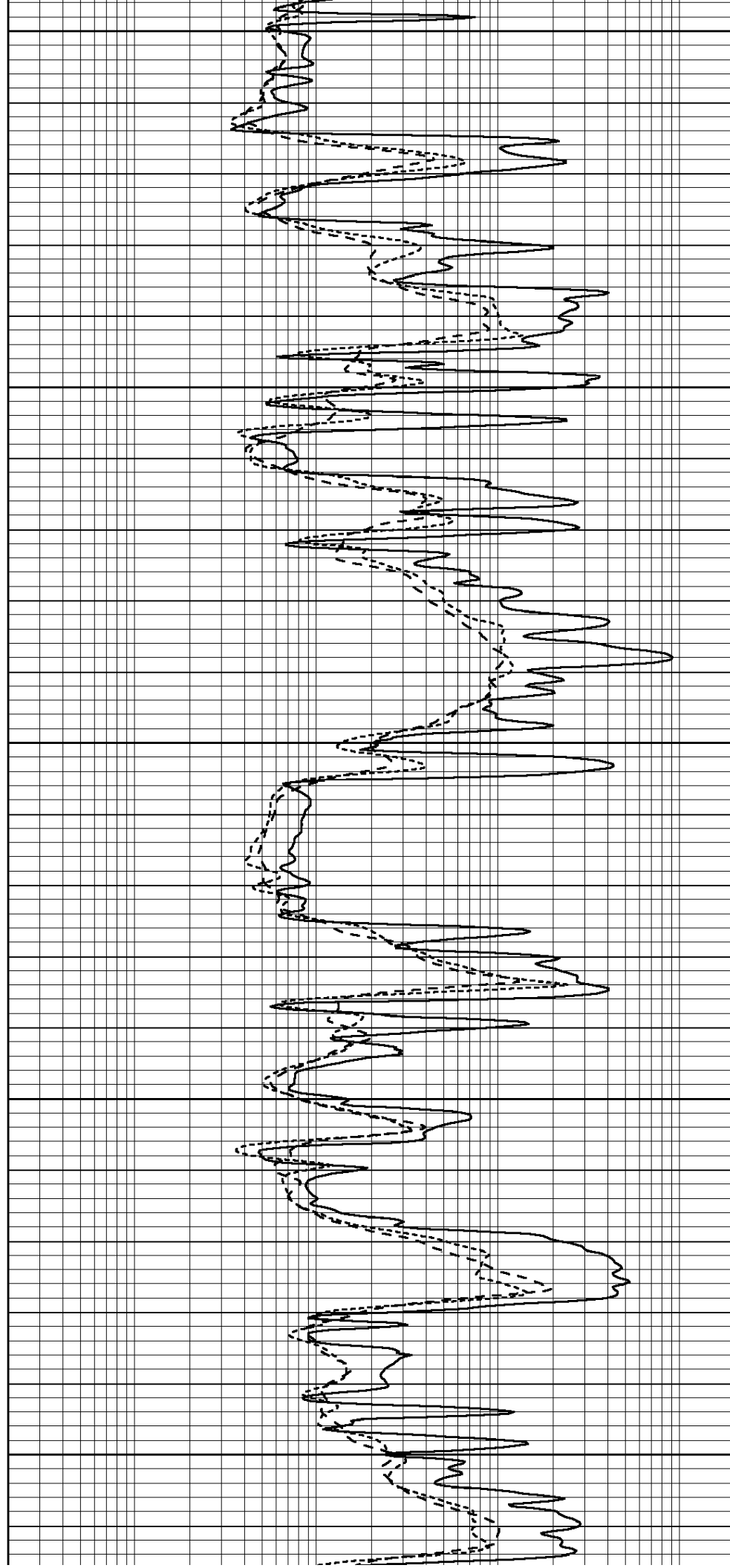
4250

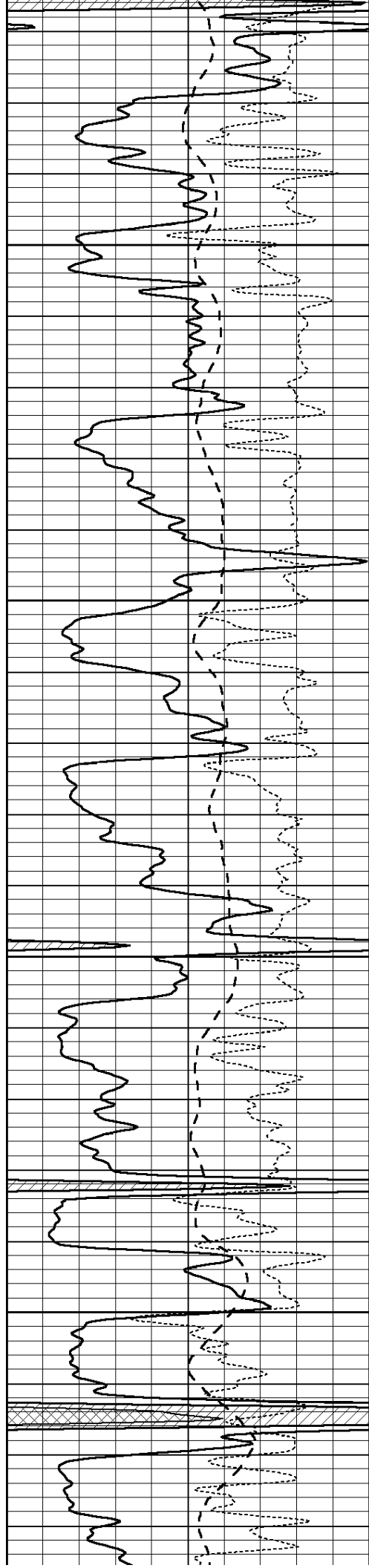
4300

4350

4400

4450



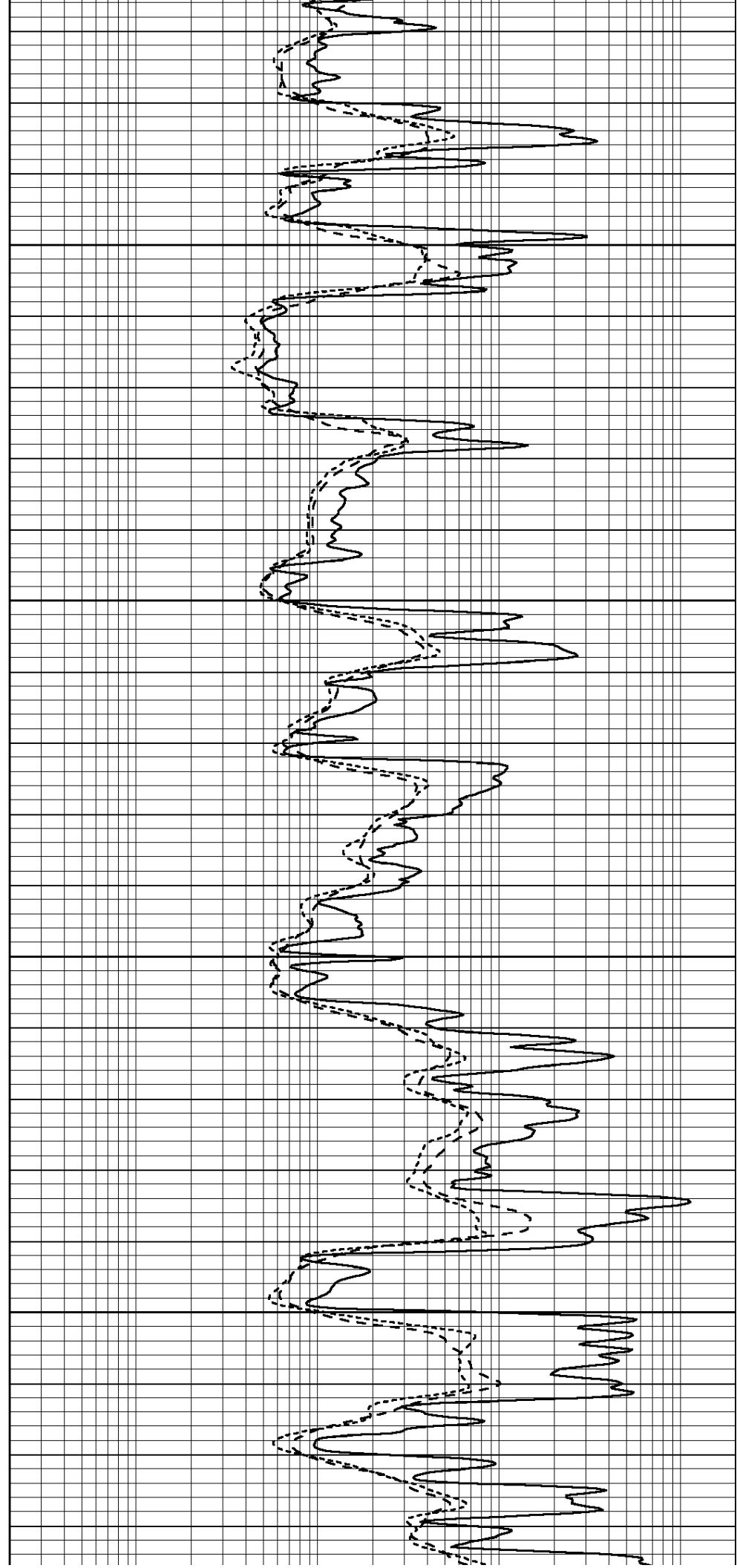


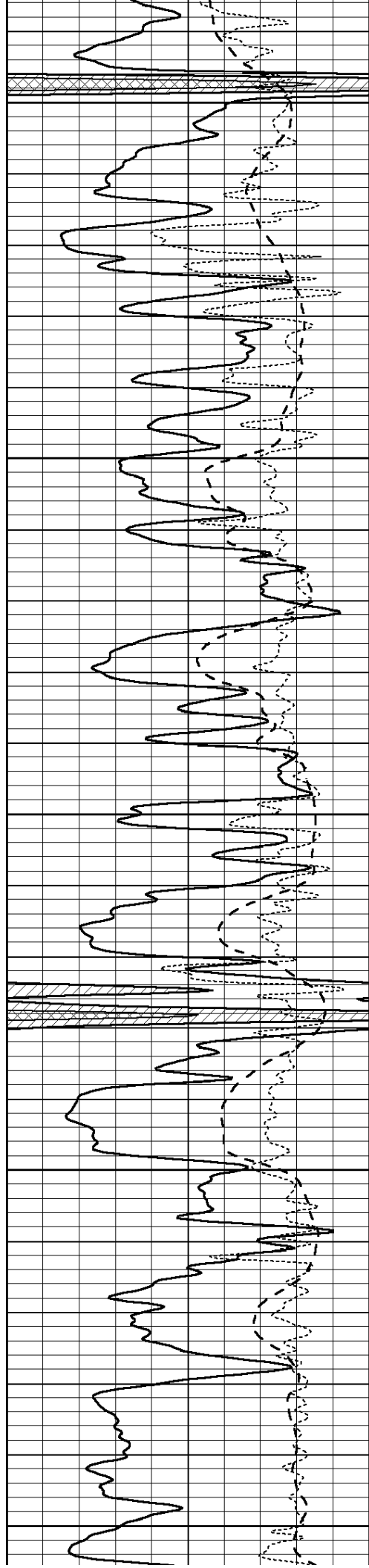
4500

4550

4600

4650





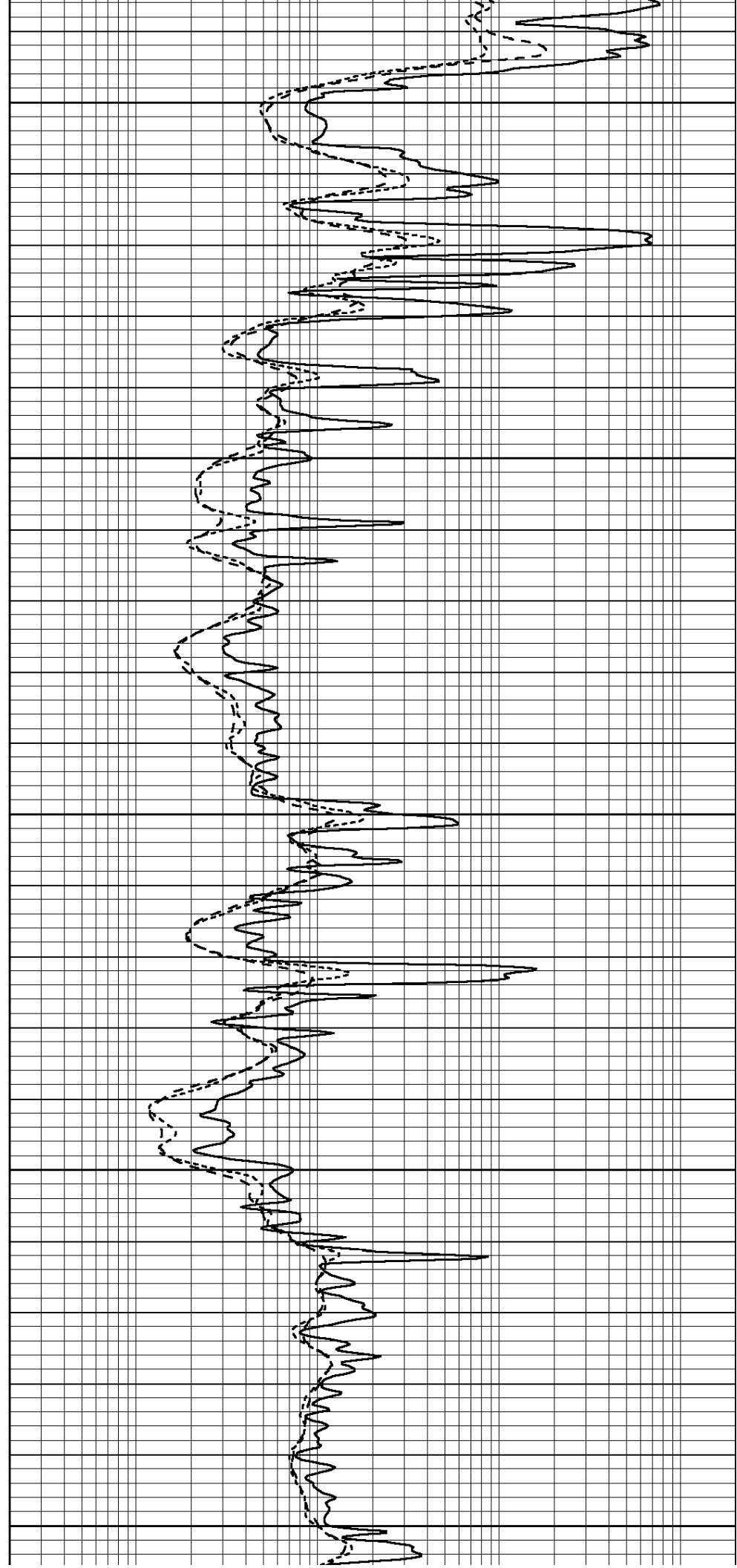
4700

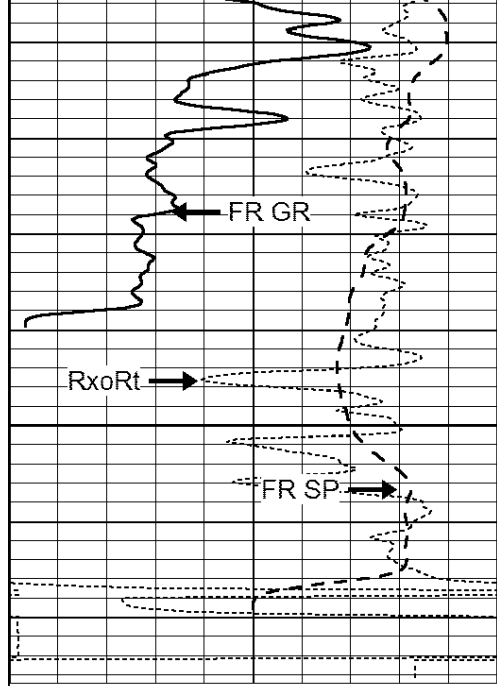
4750

4800

4850

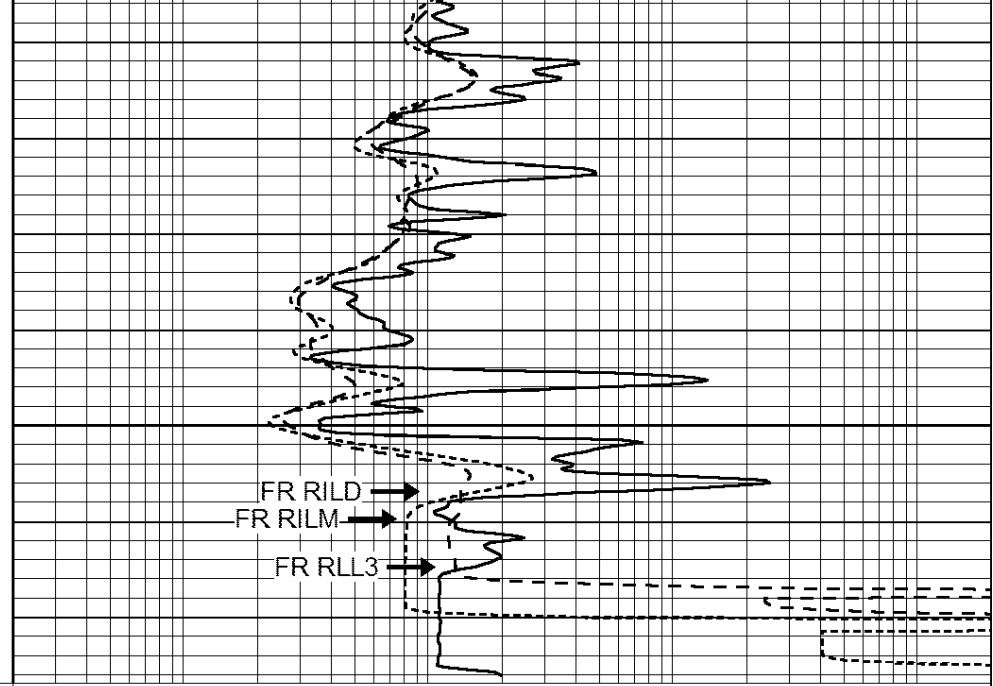
4900





0	GAMMA RAY (GAPI)	150
-100	SP (mV)	100
-250	Rxo/Rt	50

4950
LTD 4967



0.2	SHALLOW GUARD (Ohm-m)	2000
0.2	MEDIUM INDUCTION (Ohm-m)	2000
0.2	DEEP INDUCTION (Ohm-m)	2000

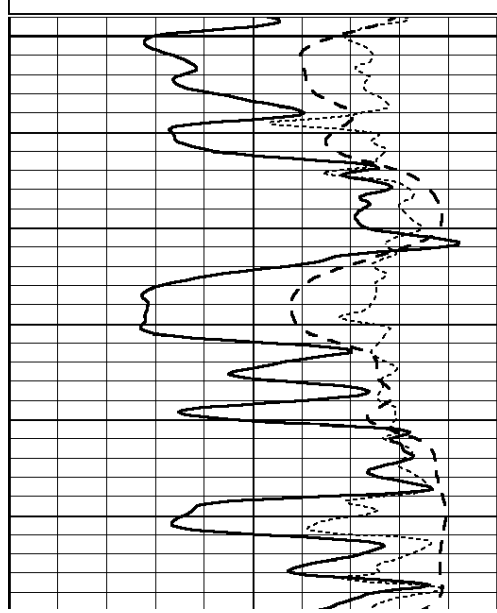


REPEAT SECTION

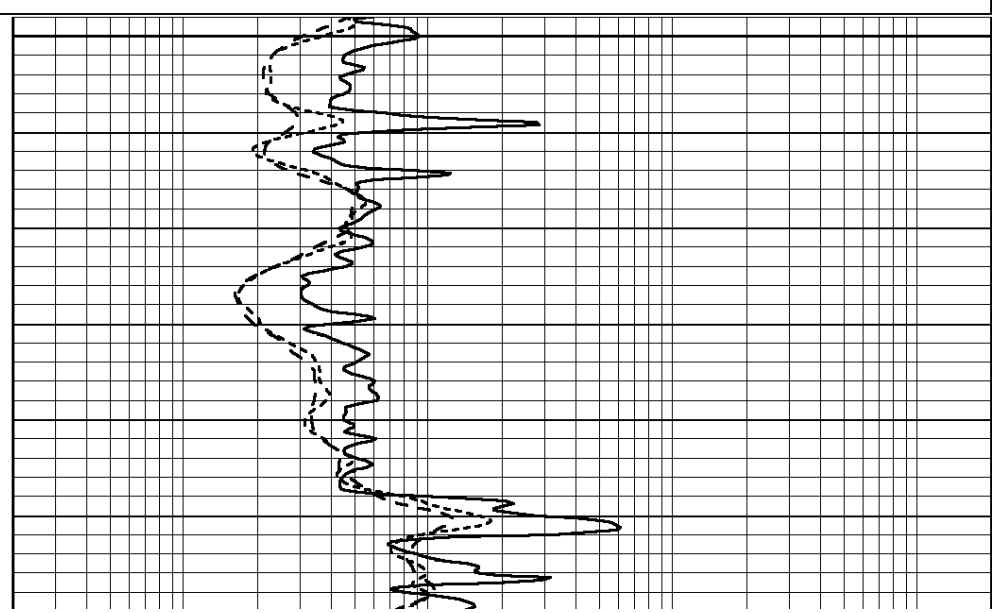
Database File: 26262ddn.db
 Dataset Pathname: pass5.1
 Presentation Format: _dil
 Dataset Creation: Tue Nov 25 19:12:01 2014 by Calc Open-Cased 090629
 Charted by: Depth in Feet scaled 1:240

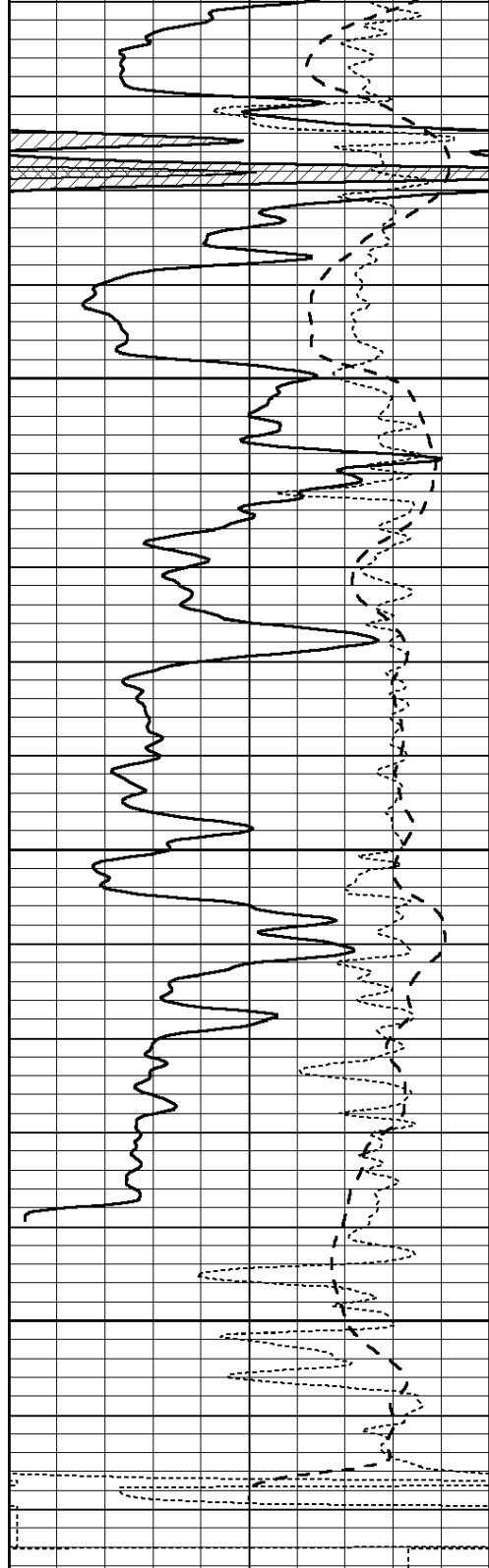
0	GAMMA RAY (GAPI)	150
-100	SP (mV)	100
-250	Rxo/Rt	50

0.2	SHALLOW GUARD (Ohm-m)	2000
0.2	MEDIUM INDUCTION (Ohm-m)	2000
0.2	DEEP INDUCTION (Ohm-m)	2000



4750
4800



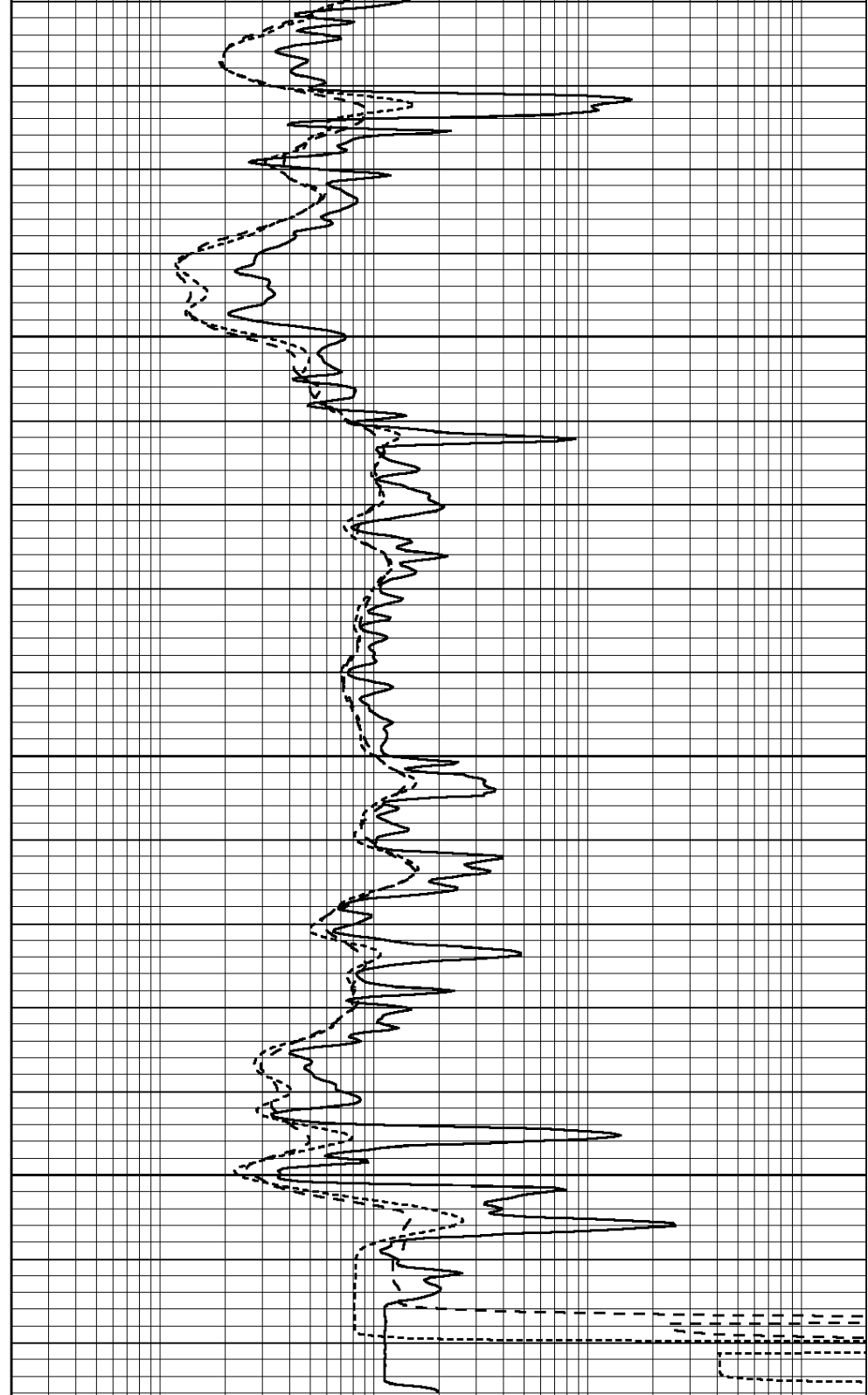


4850

4900

4950

0	GAMMA RAY (GAPI)	150
-100	SP (mV)	100
-250	Rxo/Rt	50



0.2	SHALLOW GUARD (Ohm-m)	2000
0.2	MEDIUM INDUCTION (Ohm-m)	2000
0.2	DEEP INDUCTION (Ohm-m)	2000

Calibration Report

Database File: 26262ddn.db
 Dataset Pathname: pass6.2
 Dataset Creation: Tue Nov 25 20:33:11 2014 by Calc Open-Cased 090629

Dual Induction Calibration Report

Serial-Model: PROBE7-DILG

Surface Cal Performed:
 Downhole Cal Performed:
 After Survey Verification Performed:

Mon Nov 24 11:09:57 2014
 Sat Jan 19 19:51:38 2013
 Sat Jan 19 19:51:38 2013

Surface Calibration								
Readings				References			Results	
Loop:	Air	Loop		Air	Loop		m	b
Deep	0.793	0.790	V	0.000	400.000	mmho/m	520.000	14.000
Medium	0.992	1.002	V	0.000	464.000	mmho/m	570.000	-28.000
Internal:	Zero	Cal		Zero	Cal		m	b
Deep	0.041	0.642	V	0.000	400.000	mmho/m	664.874	-27.011
Medium	0.035	0.802	V	0.000	464.000	mmho/m	604.936	-21.367

Downhole Calibration								
Readings				References			Results	
	Zero	Cal		Zero	Cal		m'	b'
Deep	135384.000	27094.500	mmho/m	135400.000	27082.400	mmho/m	1.000	-19.259
Medium	-47330.100	-9381.740	mmho/m	-47327.100	-9389.280	mmho/m	1.000	-10.154
LL3		7.322	V		1400.000	Ohm-m		
		0.038	V		20.000	Ohm-m		
		-7.273	V		4000.000	mmho-m		

After Survey Verification								
Readings				Targets			Results	
	Zero	Cal		Zero	Cal		m'	b'
Deep	0.000	0.000	mmho/m	135384.000	27094.500	mmho/m	1.000	0.000
Medium	0.000	0.000	mmho/m	-47330.100	-9381.740	mmho/m	1.000	0.000
LL3		0.000	Ohm-m		1400.000	Ohm-m		
		0.000	Ohm-m		20.000	Ohm-m		
		0.000	mmho-m		4000.000	mmho-m		

Compensated Density Calibration Report

Serial-Model:	GEAR5-GEARHART
Source / Verifier:	147 / 147
Master Calibration Performed:	Mon Nov 24 09:45:44 2014
Before Survey Verification Performed:	
After Survey Verification Performed:	

Master Calibration						
	Density		Far Detector	Near Detector		
Magnesium	1.710	g/cc	848.07	511.00	cps	
Aluminum	2.610	g/cc	183.22	341.84	cps	
	Spine Angle = 75.30		Density/Spine Ratio = 0.568			
	Size		Reading			
Small Ring	8.20	in	1.64	V		
Large Ring	14.00	in	2.93	V		

Before Survey Verification						
	Target		Measured			
		g/cc			g/cc	
		g/cc			g/cc	
		g/cc			g/cc	

After Survey Verification

Target

Measured

g/cc
g/cc
g/cc

g/cc
g/cc
g/cc

Compensated Neutron Calibration Report

Serial Number: 080620
Tool Model: Probe

PRE-SURVEY VERIFICATION

Detector	Readings	Measured	Target
Short Space	cps		
Long Space	cps	pu	pu

POST-SURVEY VERIFICATION

Detector	Readings	Measured	Target
Short Space	cps		
Long Space	cps	pu	pu

Gamma Ray Calibration Report

Serial Number: 46001
Tool Model: Probe1
Performed: Mon Nov 24 09:45:18 2014

Calibrator Value: 1.0 GAPI

Background Reading: 0.0 cps
Calibrator Reading: 1.0 cps

Sensitivity: 0.2600 GAPI/cps