



**COMPLETION
& PRODUCTION
SERVICES CO.**

**COMPENSATED
DENSITY / NEUTRON
LOG**

Company GREAT PLAINS ENERGY, INC.
Well COLLEEN RALL TRUST #1-10
Field WILDCAT
County THOMAS State KANSAS

Company GREAT PLAINS ENERGY, INC.
Well COLLEEN RALL TRUST #1-10
Field WILDCAT
County THOMAS
State KANSAS

Location: API #: 15-193-20941-00-00
280' FSL & 550' FWL
SE - SW - SW - SW
SEC 10 TWP 6S RGE 36W
Permanent Datum GROUND LEVEL Elevation 3369
Log Measured From KELLY BUSHING1' A.G.L.
Drilling Measured From KELLY BUSHING
Other Services
DILMEL
Elevation
K.B. 3380
D.F. 3378
G.L. 3369

Date	11-25-14		
Run Number	ONE		
Depth Driller	4963		
Depth Logger	4967		
Bottom Logged Interval	4943		
Top Log Interval	3700		
Casing Driller	8 5/8" @ 366'		
Casing Logger	366'		
Bit Size	7.875		
Type Fluid in Hole	CHEMICAL MUD	CHLORIDES 7,200 PPM	
Density / Viscosity	9.3 / 51		
pH / Fluid Loss	11.5 / 6.8		
Source of Sample	FLOWLINE		
Rm @ Meas. Temp	0.50 @ 95F		
Rmf @ Meas. Temp	0.38 @ 95F		
Rmc @ Meas. Temp	0.60 @ 95F		
Source of Rmf / Rmc	FLOWLINE		
Rm @ BHT	0.38 @ 125F		
Time Circulation Stopped	2 HOURS		
Time Logger on Bottom			
Maximum Recorded Temperature	125F		
Equipment Number	3802		
Location	HAYS, KS.		
Recorded By	IAN MABB		
Witnessed By	RICHARD BELL		

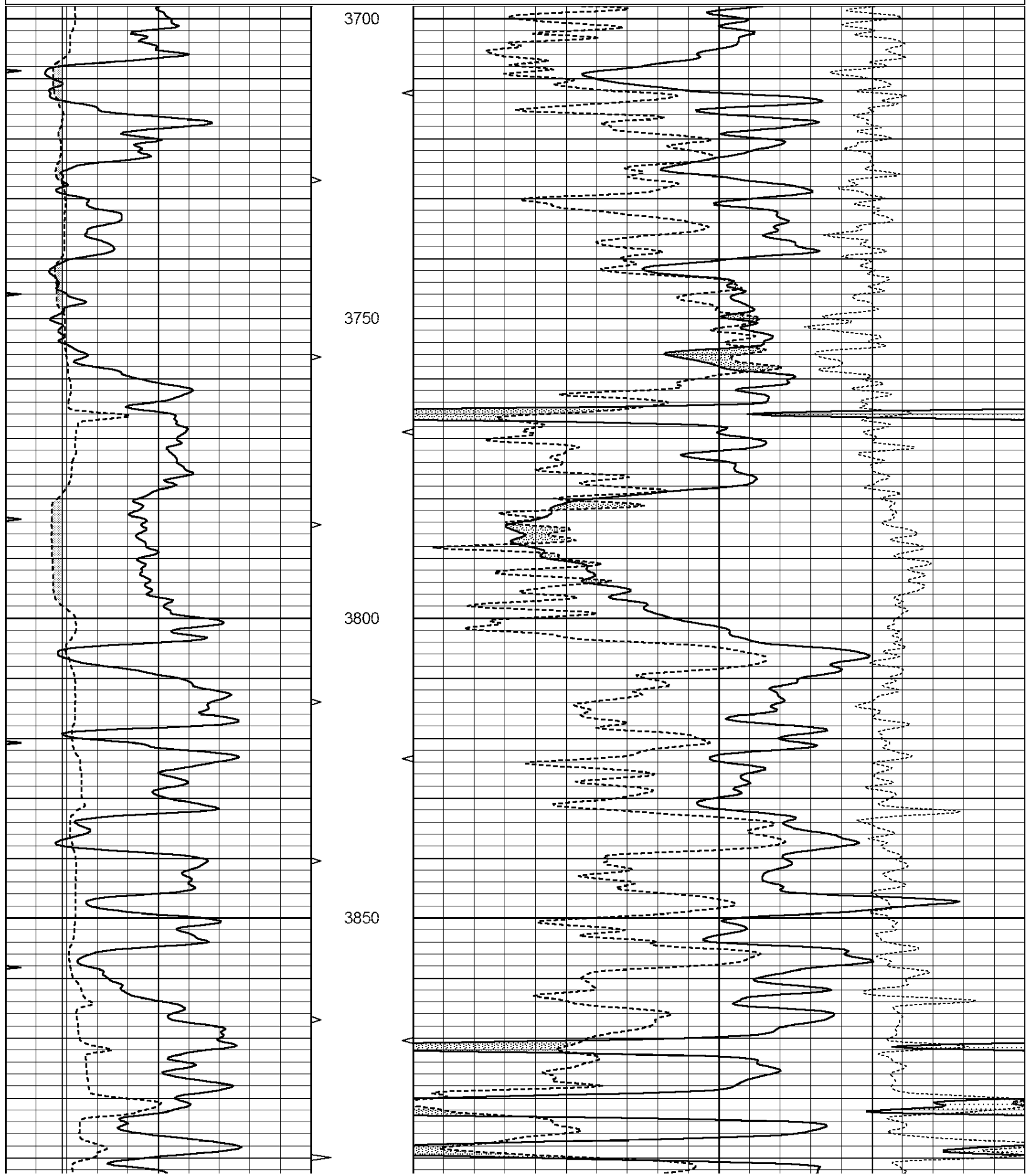
<<< Fold Here >>>

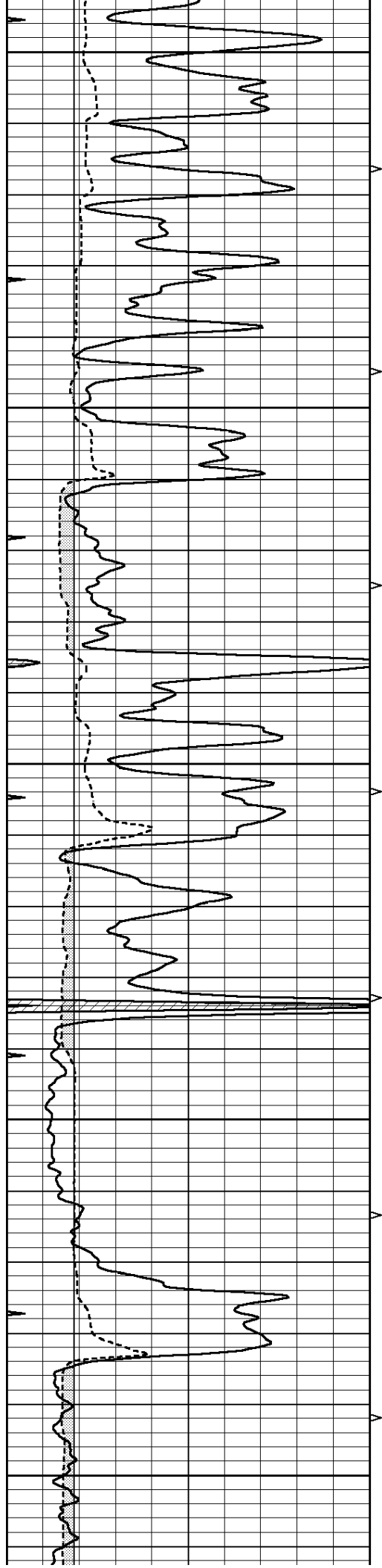
All interpretations are opinions based on inferences from electrical or other measurements and we cannot and do not guarantee the accuracy or correctness of any interpretation, and we shall not, except in the case of gross or willful negligence on our part, be liable or responsible for any loss, costs, damages, or expenses incurred or sustained by anyone resulting from any interpretation made by any of our officers, agents or employees. These interpretations are also subject to our general terms and conditions set out in our current Price Schedule.

Comments

NABORS COMPLETION & PRODUCTION SERVICES
785-628-6395
THANK YOU FOR YOUR BUSINESS
DIRECTIONS: BREWSTER, KS - 12 MILES NORTH TO RD CC. - EAST 2 1/4 - NORTH INTO

0	GAMMA RAY (GAPI)	150	AVTX	30	COMPENSATED DENSITY (pu)	-10
6	CALIPER (in)	16	10 (ft3)	0 30	COMPENSATED NEUTRON (pu)	-10
0	MINMK	20	BVTX		-0.25 CORRECTION (g/cc)	0.25
			0 (ft3)	10		





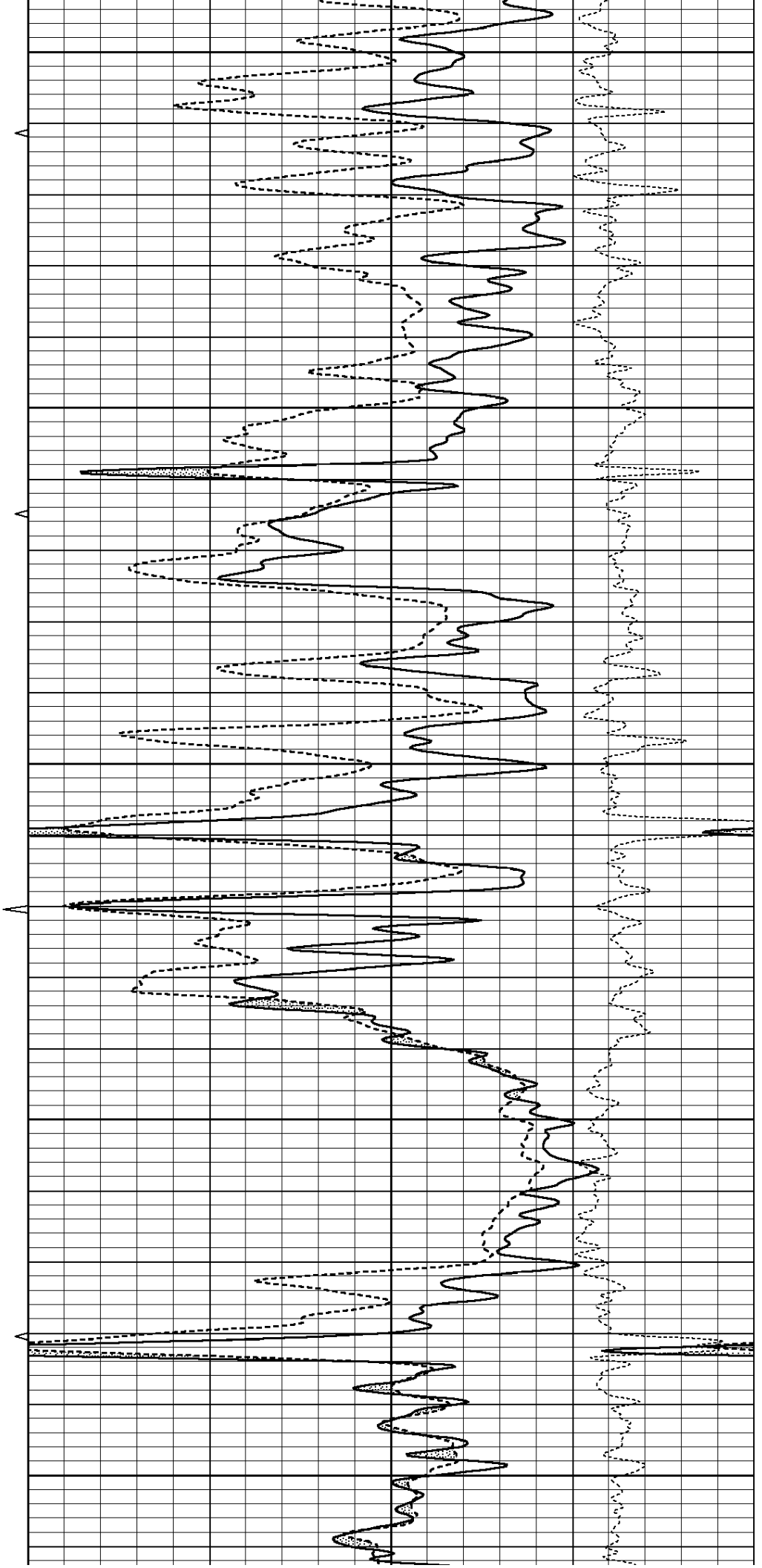
3900

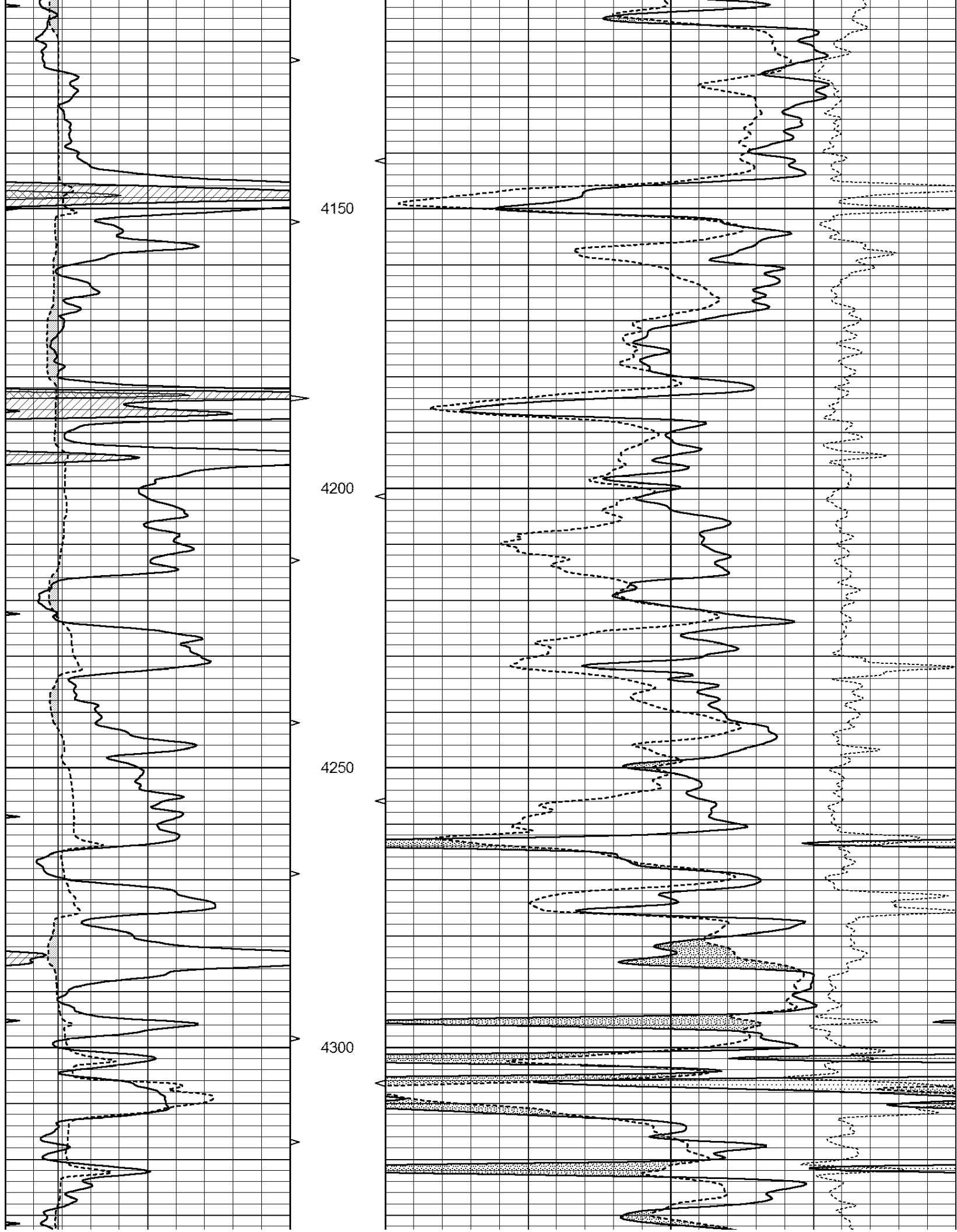
3950

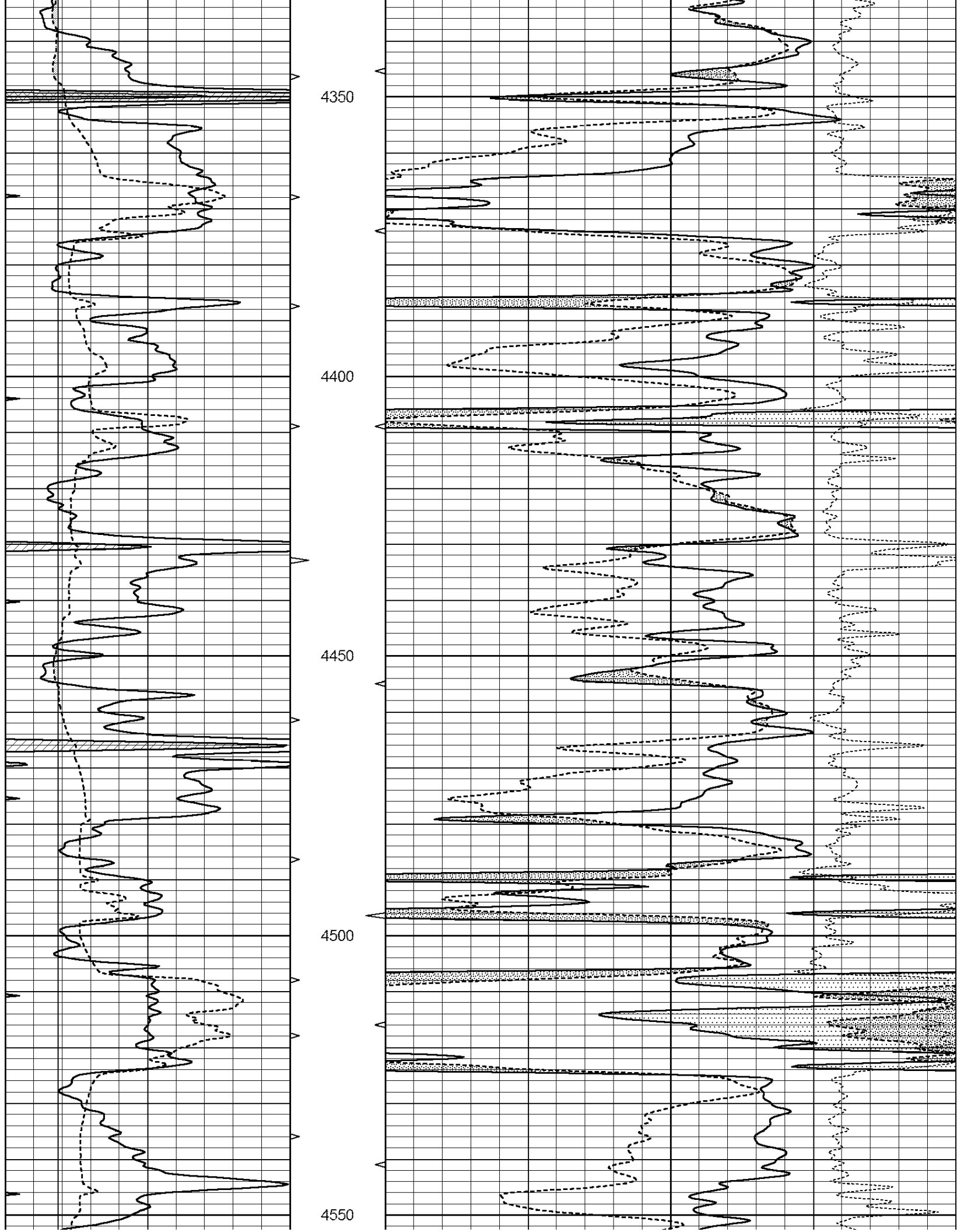
4000

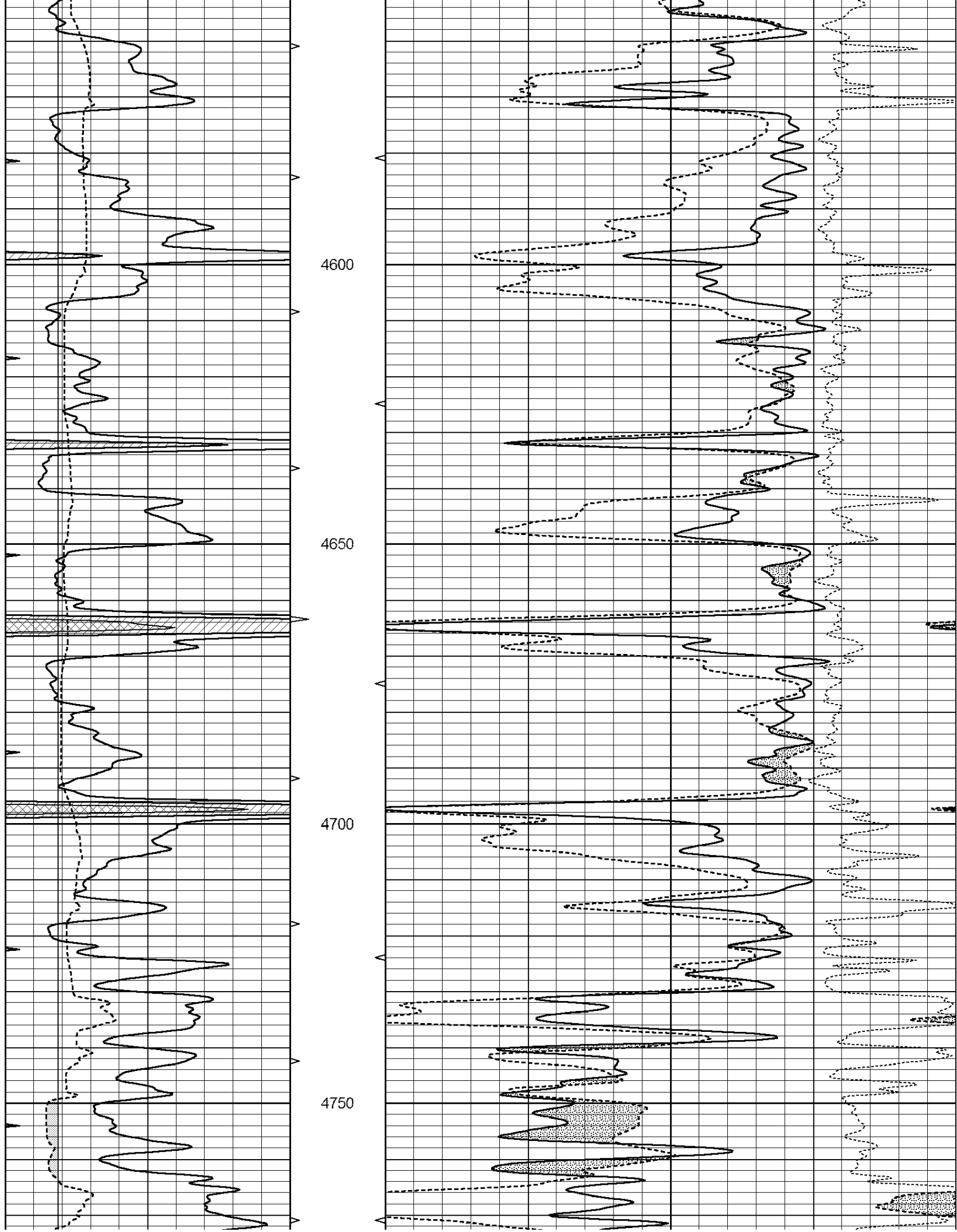
4050

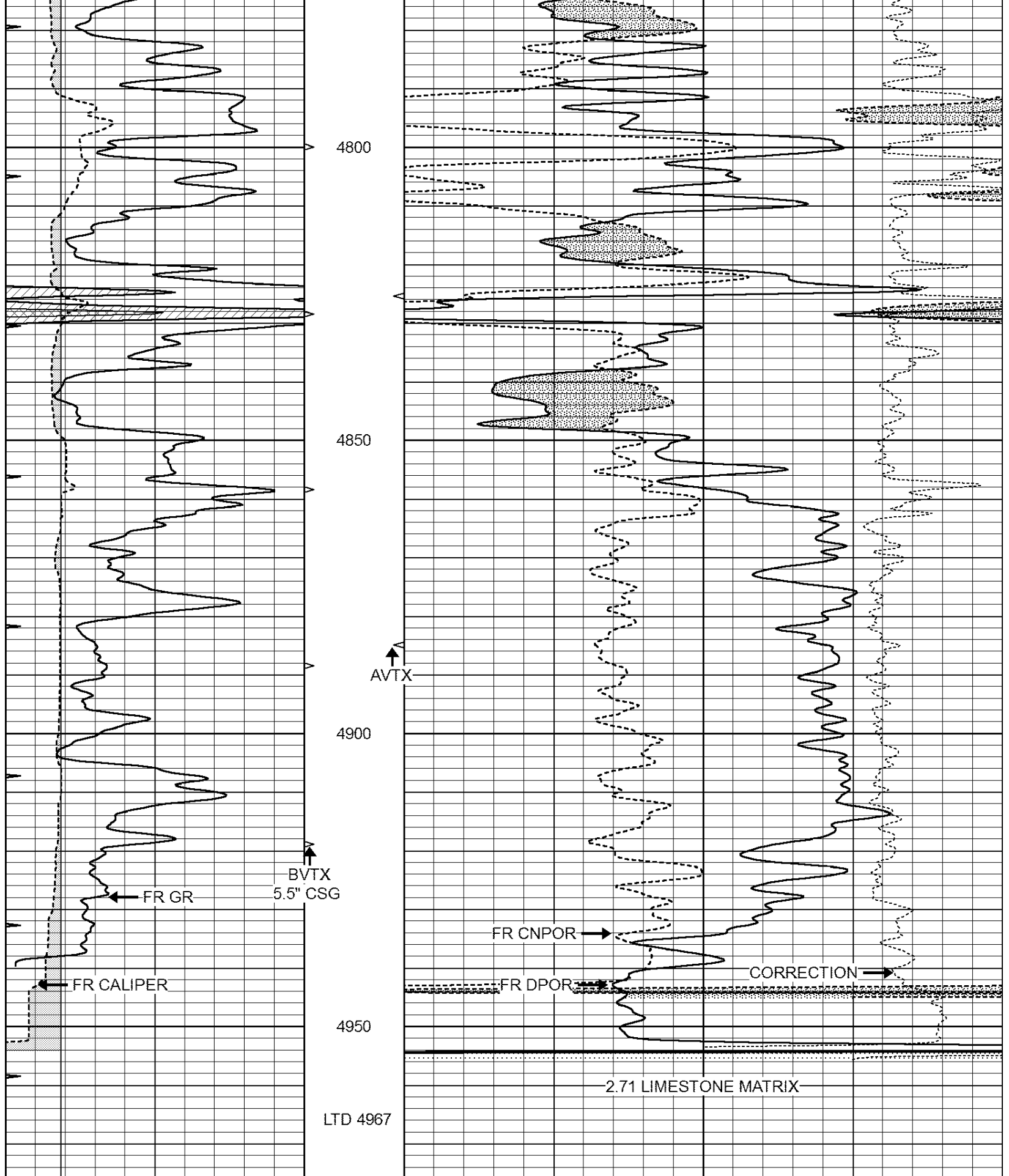
4100











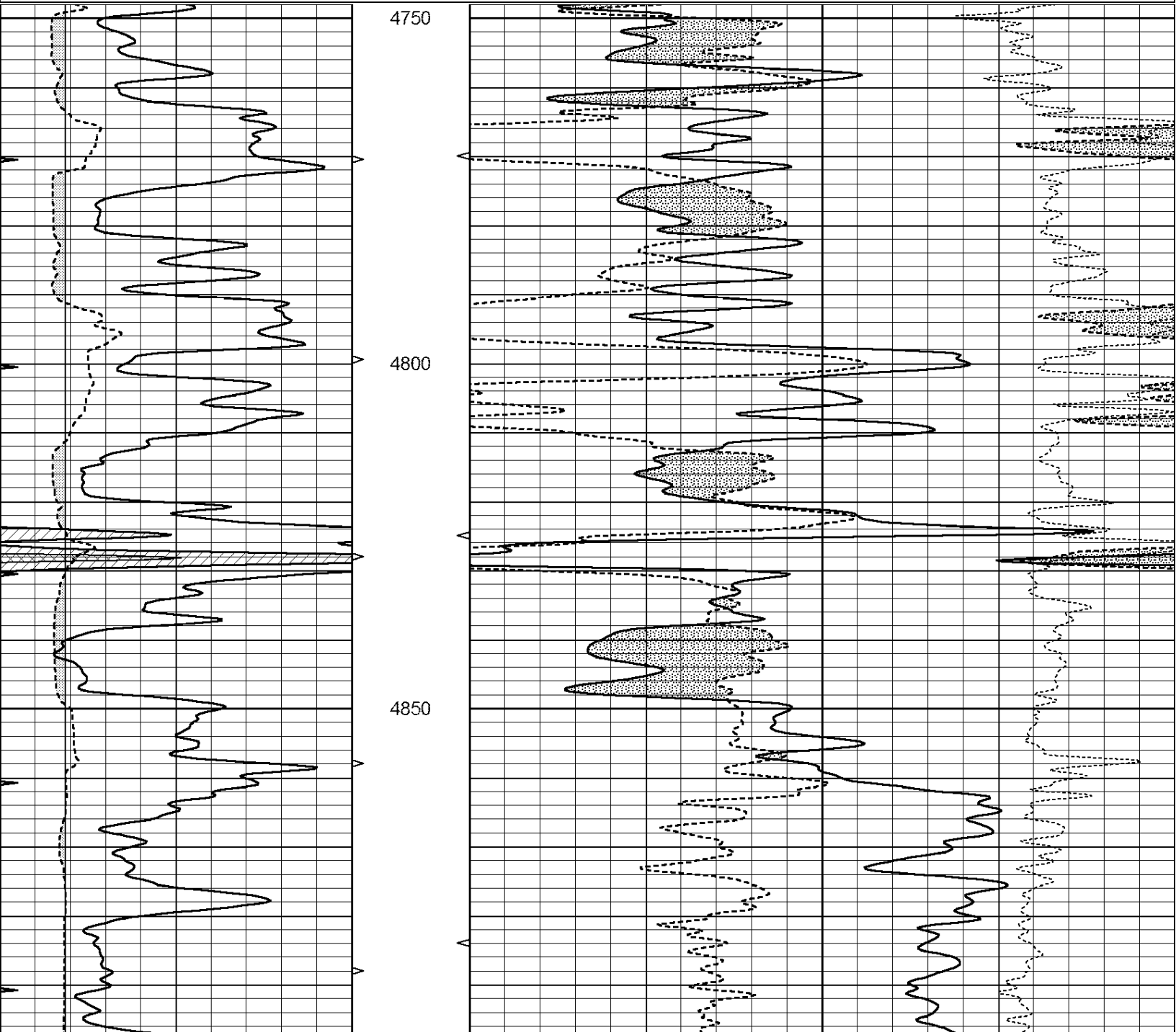
0	GAMMA RAY (GAPI)	150	AVTX	30	COMPENSATED DENSITY (pu)	-10	
6	CALIPER (in)	16	10 (ft3)	0 30	COMPENSATED NEUTRON (pu)	-10	
0	MINMK	20	BVTX		-0.25	CORRECTION (g/cc)	0.25

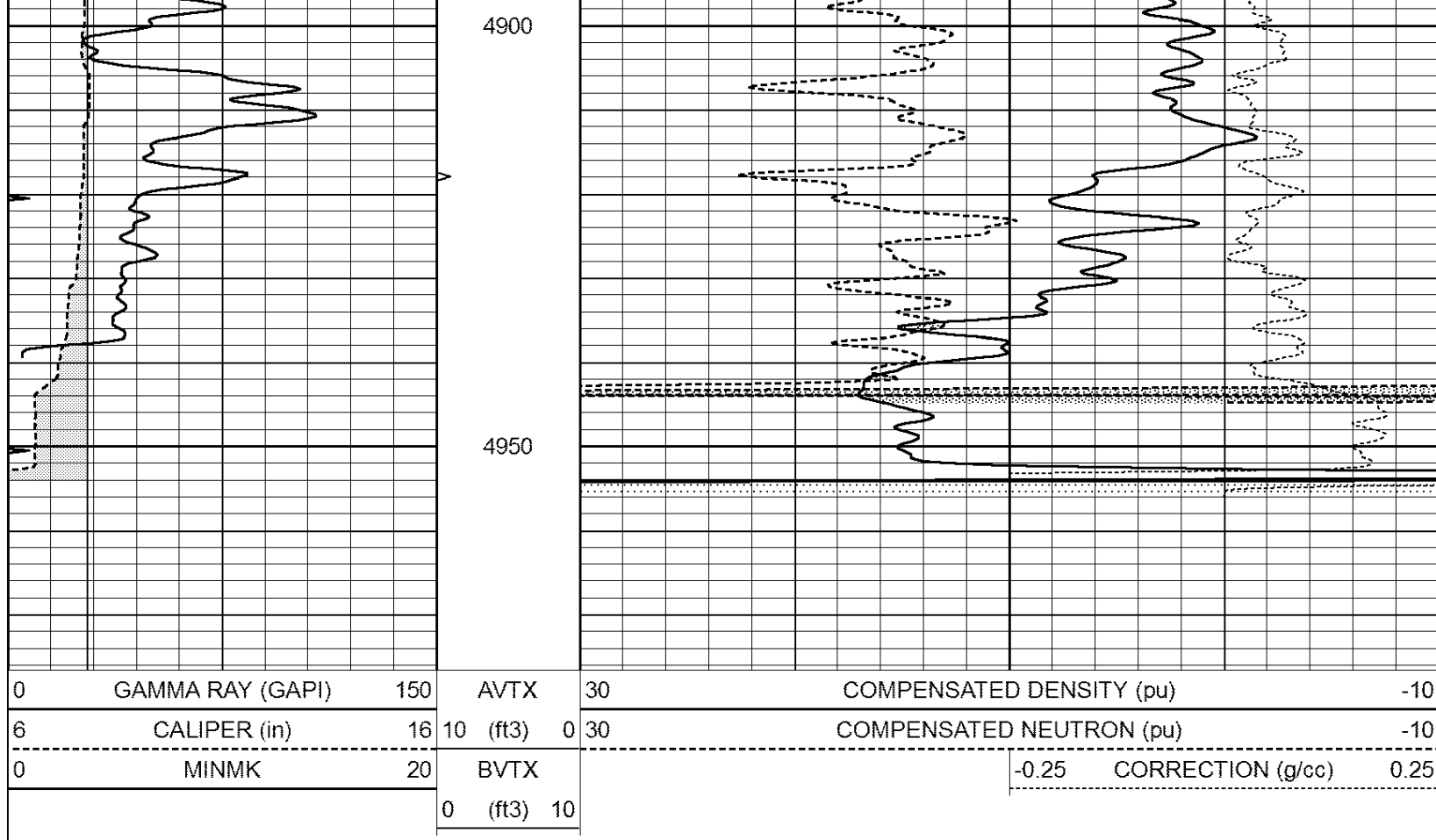


REPEAT SECTION

Database File: 26262ddn.db
 Dataset Pathname: pass5.1
 Presentation Format: _den_neu
 Dataset Creation: Tue Nov 25 19:12:01 2014 by Calc Open-Cased 090629
 Charted by: Depth in Feet scaled 1:240

0	GAMMA RAY (GAPI)	150	AVTX	30	COMPENSATED DENSITY (pu)	-10
6	CALIPER (in)	16	10 (ft3)	0 30	COMPENSATED NEUTRON (pu)	-10
0	MINMK	20	BVTX		-0.25 CORRECTION (g/cc)	0.25
			0 (ft3)	10		





Calibration Report

Database File: 26262ddn.db
 Dataset Pathname: pass6.1
 Dataset Creation: Tue Nov 25 19:54:19 2014 by Calc Open-Cased 090629

Dual Induction Calibration Report

Serial-Model: PROBE7-DILG
 Surface Cal Performed: Mon Nov 24 11:09:57 2014
 Downhole Cal Performed: Sat Jan 19 19:51:38 2013
 After Survey Verification Performed: Sat Jan 19 19:51:38 2013

Surface Calibration

Loop:	Readings			References			Results	
	Air	Loop	V	Air	Loop	mmho/m	m	b
Deep	0.793	0.790	V	0.000	400.000	mmho/m	520.000	14.000
Medium	0.992	1.002	V	0.000	464.000	mmho/m	570.000	-28.000
Internal:	Zero	Cal	V	Zero	Cal	mmho/m	m	b
Deep	0.041	0.642	V	0.000	400.000	mmho/m	664.874	-27.011
Medium	0.035	0.802	V	0.000	464.000	mmho/m	604.936	-21.367

Downhole Calibration

	Readings			References			Results	
	Zero	Cal	V	Zero	Cal	mmho/m	m'	b'
Deep	135384.000	27094.500	V	135400.000	27082.400	mmho/m	1.000	-19.259
Medium	-47330.100	-9381.740	V	-47327.100	-9389.280	mmho/m	1.000	-10.154
LL3		7.322	V		1400.000	Ohm-m		
		0.038	V		20.000	Ohm-m		
		-7.273	V		4000.000	mmho-m		

After Survey Verification

	Readings			Targets			Results	
	Zero	Cal		Zero	Cal		m'	b'
Deep	0.000	0.000	mmho/m	135384.000	27094.500	mmho/m	1.000	0.000
Medium	0.000	0.000	mmho/m	-47330.100	-9381.740	mmho/m	1.000	0.000
LL3		0.000	Ohm-m		1400.000	Ohm-m		
		0.000	Ohm-m		20.000	Ohm-m		
		0.000	mmho-m		4000.000	mmho-m		

Compensated Density Calibration Report

Serial-Model: GEAR5-GEARHART
 Source / Verifier: 147 / 147
 Master Calibration Performed: Mon Nov 24 09:45:44 2014
 Before Survey Verification Performed:
 After Survey Verification Performed:

Master Calibration

	Density		Far Detector	Near Detector	
Magnesium	1.710	g/cc	848.07	511.00	cps
Aluminum	2.610	g/cc	183.22	341.84	cps
Spine Angle = 75.30			Density/Spine Ratio = 0.568		
	Size		Reading		
Small Ring	8.20	in	1.64	V	
Large Ring	14.00	in	2.93	V	

Before Survey Verification

Target	Measured
g/cc	g/cc
g/cc	g/cc
g/cc	g/cc

After Survey Verification

Target	Measured
g/cc	g/cc
g/cc	g/cc
g/cc	g/cc

Compensated Neutron Calibration Report

Serial Number: 080620
 Tool Model: Probe

PRE-SURVEY VERIFICATION

Detector	Readings	Measured	Target
Short Space	cps		
Long Space	cps	pu	pu

POST-SURVEY VERIFICATION

Detector	Readings	Measured	Target
Short Space	cps		
Long Space	cps	pu	pu

Gamma Ray Calibration Report

Serial Number:	46001
Tool Model:	Probe1
Performed:	Mon Nov 24 09:45:18 2014

Calibrator Value:	1.0	GAPI
-------------------	-----	------

Background Reading:	0.0	cps
---------------------	-----	-----

Calibrator Reading:	1.0	cps
---------------------	-----	-----

Sensitivity:	0.2600	GAPI/cps
--------------	--------	----------