



Weatherford[®]

CALIPER LOG

COMPANY	SHAKESPEARE OIL. CO., INC.		
WELL	CAMPBELL 4-17		
FIELD	WILDCAT		
PROVINCE/COUNTY	LOGAN		
COUNTRY/STATE	U.S.A. / KANSAS		
LOCATION	850' FSL & 2000' FEL		
PERMIT NUMBER	SE NW SW SE		
SEC 17	TWP 13S	RGE 32W	Other Services
Latitude			
Longitude			
API Number	15-109-21293		
Permanent Datum GL, Elevation	3033 feet		
Log Measured From	KB		
Drilling Measured From	KB @ 10 FEET		
Date	11-JUN-2014		
Run Number	ONE		
Service Order	5872-89695834		
Depth Driller	4720.00	feet	
Depth Logger	4716.00	feet	
First Reading	4682.00	feet	
Last Reading	264.00	feet	
Casing Driller	268.00	feet	
Casing Logger	264.00	feet	
Bit Size	7.875	inches	
Hole Fluid Type	CHEMICAL		
Density / Viscosity	9.30 lb/USg	65.00 CP	
PH / Fluid Loss	10.50	8.80 ml/30Min	
Sample Source	MUDDPIT		
Rm @ Measured Temp	0.64 @ 93.0	ohm-m	
Rmf @ Measured Temp	0.51 @ 93.0	ohm-m	
Rmc @ Measured Temp	0.77 @ 93.0	ohm-m	
Source Rmf / Rmc	CALC	CALC	
Rm @ BHT	0.52 @ 113.0	ohm-m	
Time Since Circulation	5 HOURS		
Max Recorded Temp	113.00	deg F	
Equipment / Base	13244	LIB	
Recorded By	D. COLE		
Witnessed By	T. PRIEST		
JOB #	LB14-178		

Elevations:	feet
KB	3043.00
DF	3041.00
GL	3033.00

BOREHOLE RECORD Last Edited: 11-JUN-2014 14:01

Bit Size inches	Depth From feet	Depth To feet
7.875	268.00	4720.00

CASING RECORD

Type	Size inches	Depth From feet	Shoe Depth feet	Weight pounds/ft
CASING	8.625	0.00	268.00	24.00

REMARKS

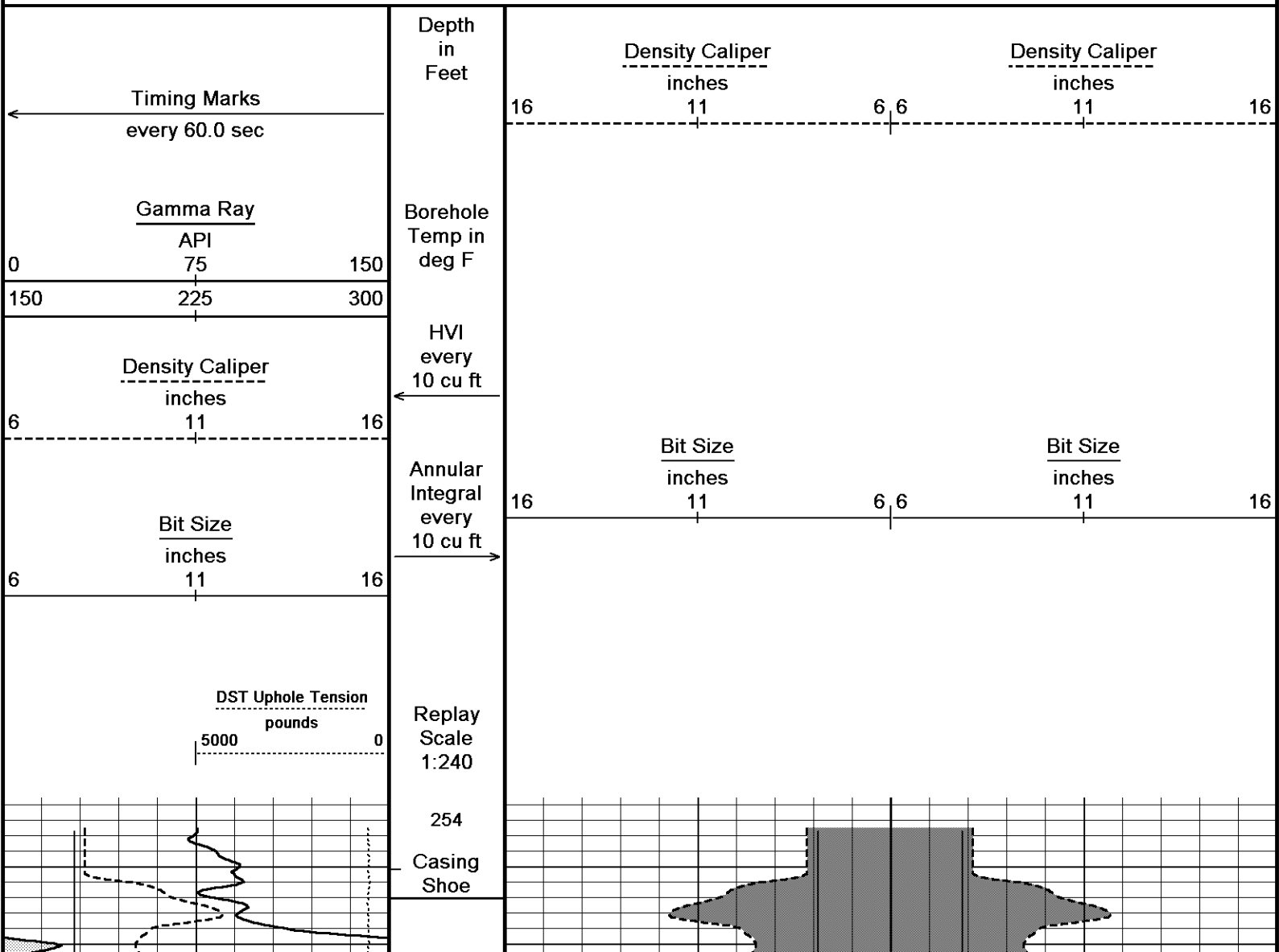
- SOFTWARE ISSUE: WLS 13.08.2113
- TOOLSTRING: MCG, MML, MDN, MPD, MFE, MSS, MAI RUN IN COMBINATION
- HARDWARE:
 - MDN: DUAL BOWSPRING ECCENTRALIZER
 - MFE: 1 X 0.5 INCH STANDOFF
 - MSS: 2 X 0.5 INCH STANDOFF
 - MAI: 2 X 0.5 INCH STANDOFF
- 2.71 G/CC LIMESTONE DENSITY MATRIX USED TO CALCULATE POROSITY
- BOREHOLE RUGOSITY, TIGHT PULLS, AND WASHOUTS WILL AFFECT DATA QUALITY
- ALL INTERVALS LOGGED AND SCALED PER CUSTOMER'S REQUEST
- TOTAL HOLE VOLUME FROM TD TO 3800 FEET: 370 CU.FT.

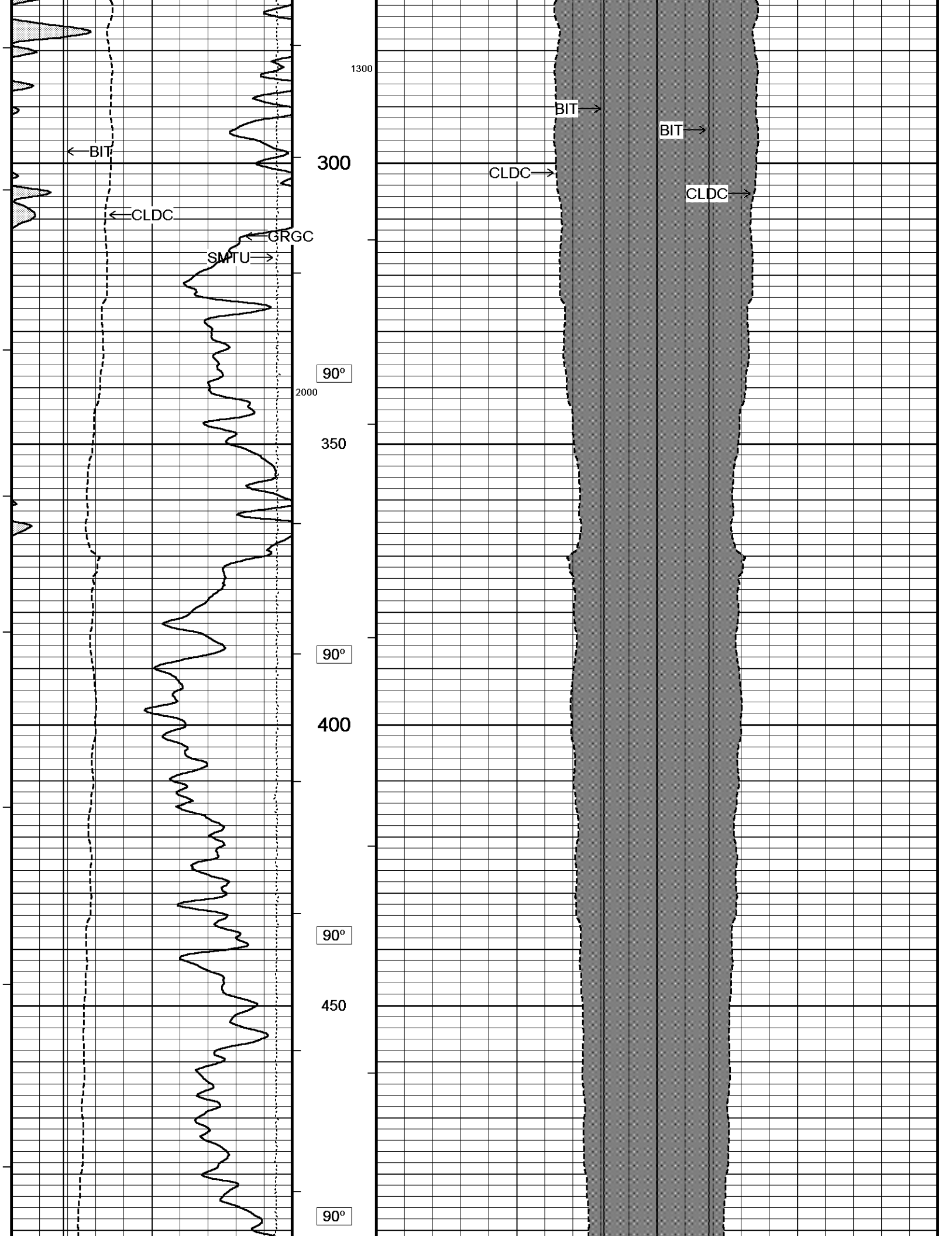
- ANNULAR HOLE VOLUME WITH 5.5 INCH PRODUCTION CASING FROM TD TO 3800 FEET: 220 CU.FT.
- RIG: HD DRILLING
- ENGINEER: D. COLE
- OPERATOR: K. RINEHART AND D. ALVARADO
- CHLORIDES: 3500

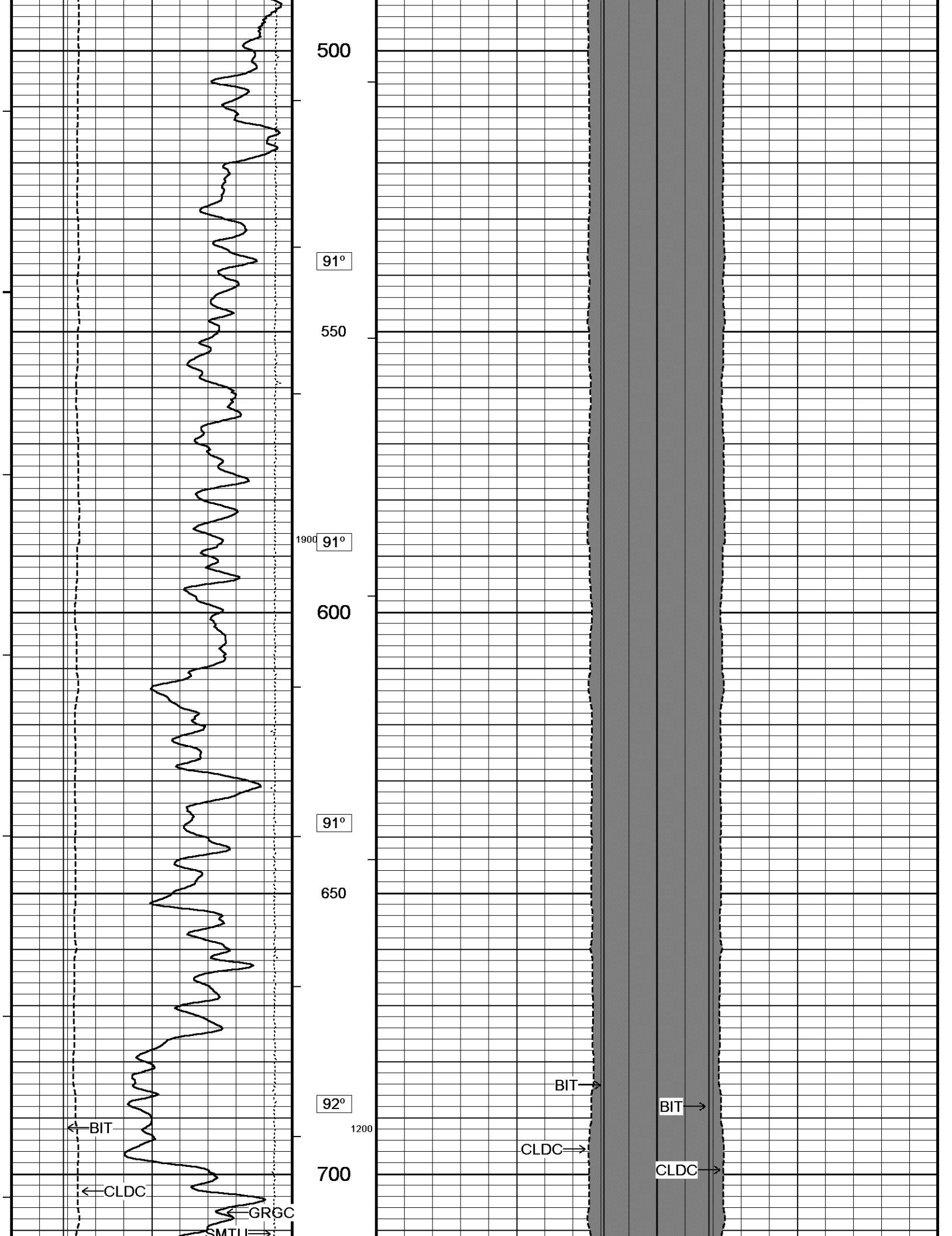
In interpreting, communicating or providing information and/or making recommendations, either written or oral, as to logs or test or other data, type or amount of material, or Work or other service to be furnished, or manner of performance, or in predicting results to be obtained, the Contractor will give the Company the benefit of the Contractor's best judgment based on its experience and will perform all such Work in a good and workmanlike manner. Any interpretation of test or other data, and any recommendation or reservoir description based upon such interpretations, are opinions based upon inferences from measurements and empirical relationships and assumptions, which inferences and assumptions are not infallible, and with respect to which professional engineers and analysts may differ. ACCORDINGLY ANY INTERPRETATION OR RECOMMENDATION RESULTING FROM THE SERVICES WILL BE AT THE SOLE RISK OF THE COMPANY, AND THE CONTRACTOR CANNOT AND DOES NOT WARRANT THE ACCURACY, CORRECTNESS OR COMPLETENESS OF ANY SUCH INTERPRETATION OR RECOMMENDATION, WHICH INTERPRETATIONS AND RECOMMENDATIONS SHOULD NOT, THEREFORE, UNDER ANY CIRCUMSTANCES BE RELIED UPON AS THE SOLE OR MAIN BASIS FOR ANY DRILLING, COMPLETION, WELL TREATMENT, PRODUCTION OR FINANCIAL DECISION, OR ANY PROCEDURE INVOLVING ANY RISK TO THE SAFETY OF ANY DRILLING ACTIVITY, DRILLING RIG OR ITS CREW OR ANY OTHER INDIVIDUAL. THE COMPANY HAS FULL RESPONSIBILITY FOR ALL DECISIONS CONCERNING THE SERVICES.

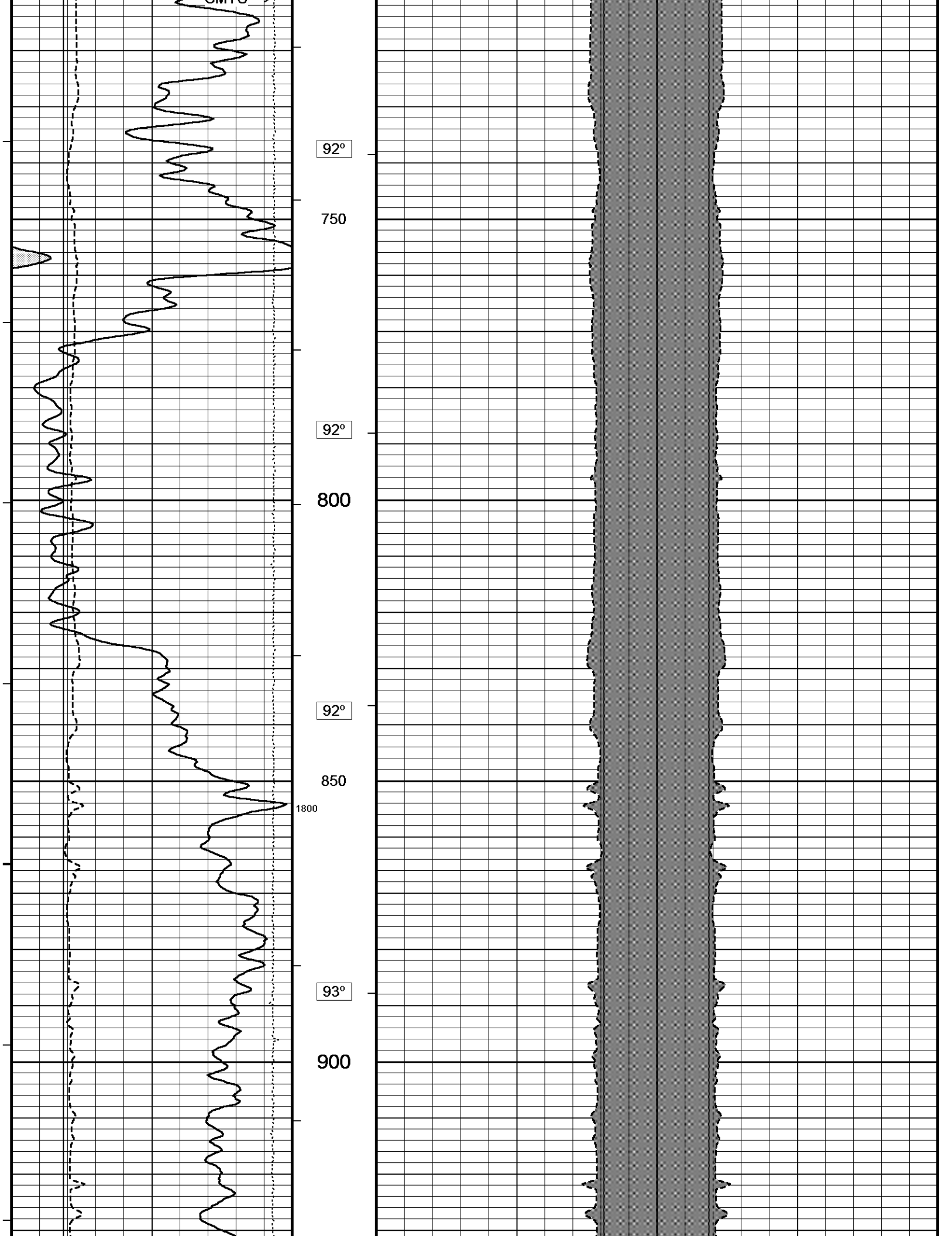
5 INCH MAIN

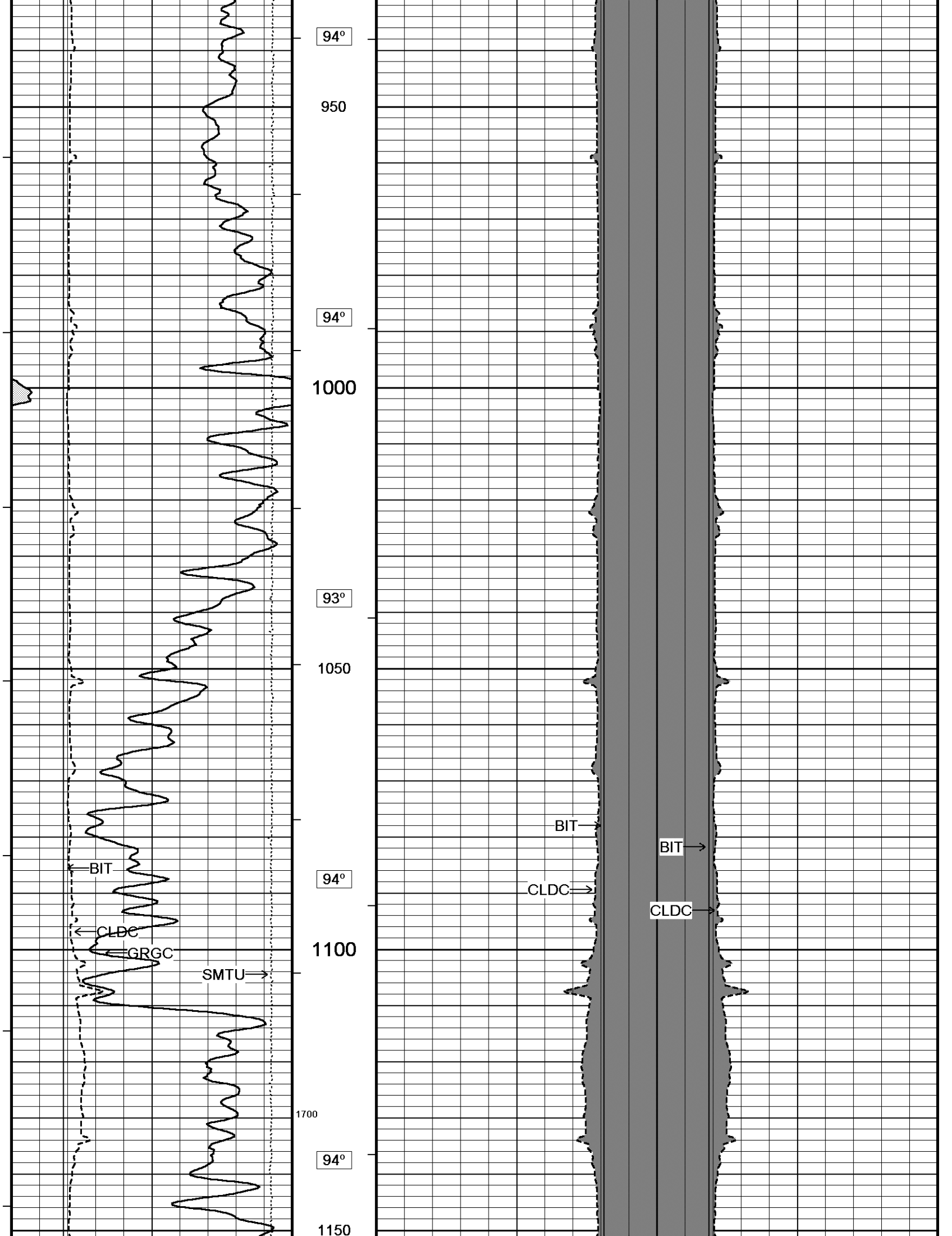
Depth Based Data - Maximum Sampling Increment 10.0cm Plotted on 11-JUN-2014 21:05
 Filename: C:\Minimus 13.08.2113\Logs\SHAKESPEARE...SHAKESPEARE CAMPBELL 4-17 MAIN.dta Recorded on 11-JUN-2014 18:33
 System Versions: Logged with 13.08.2113 Processed with 13.08.2113 Plotted with 13.08.2113

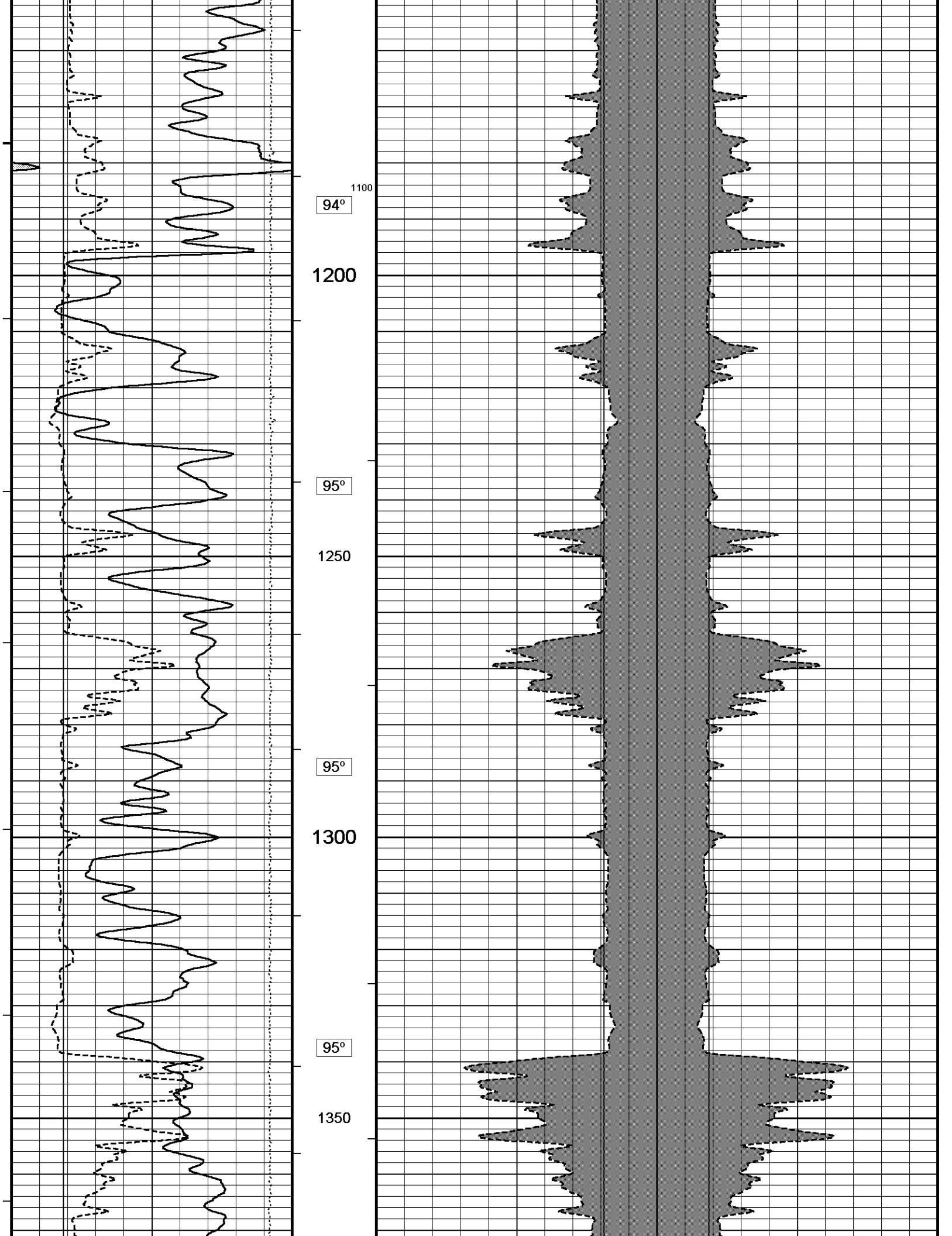


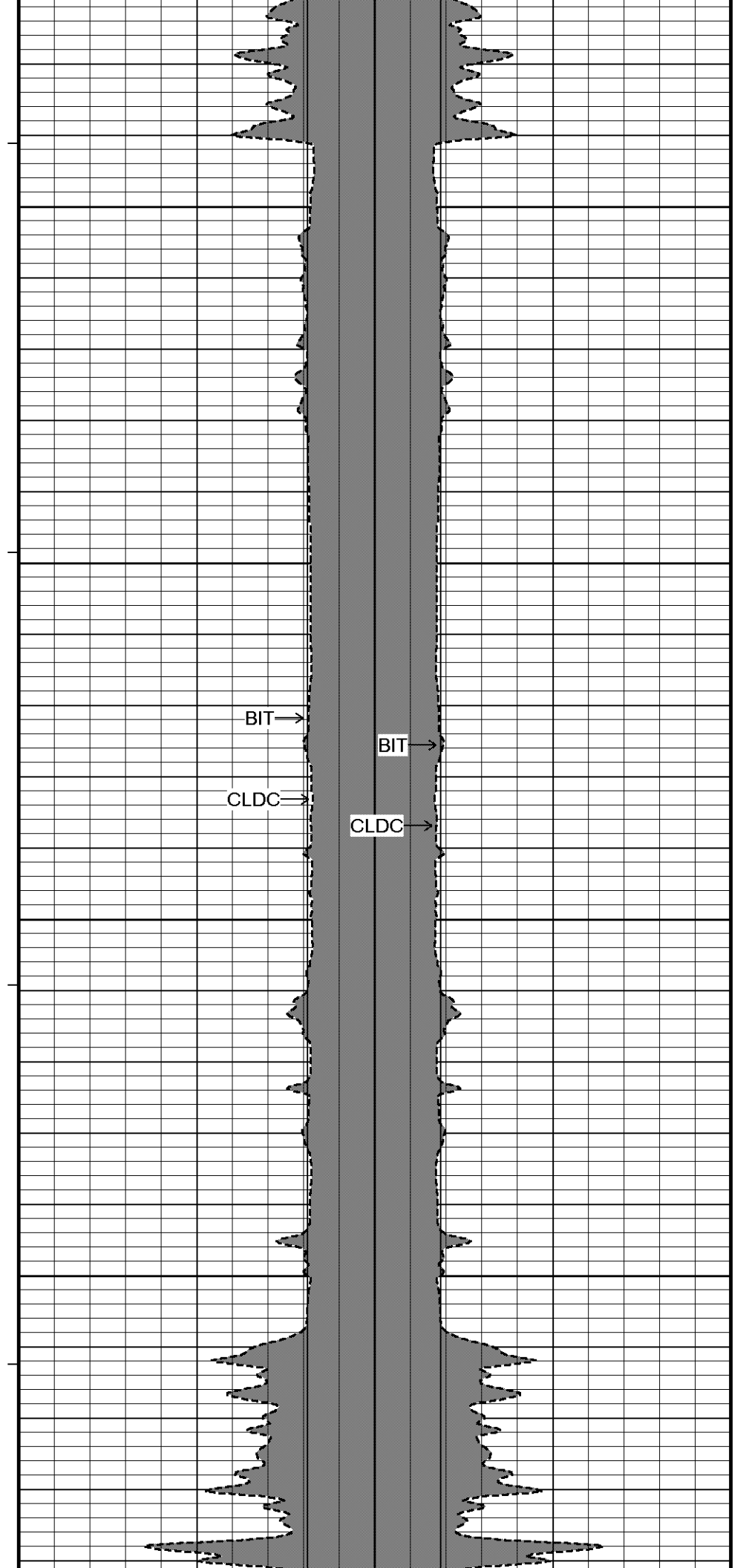
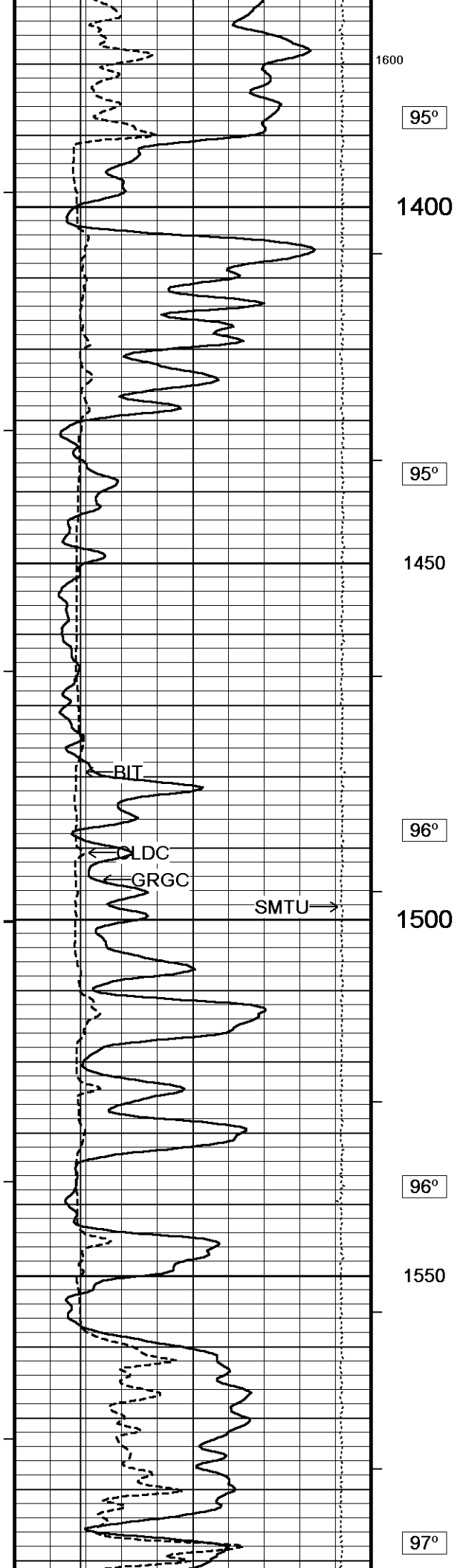


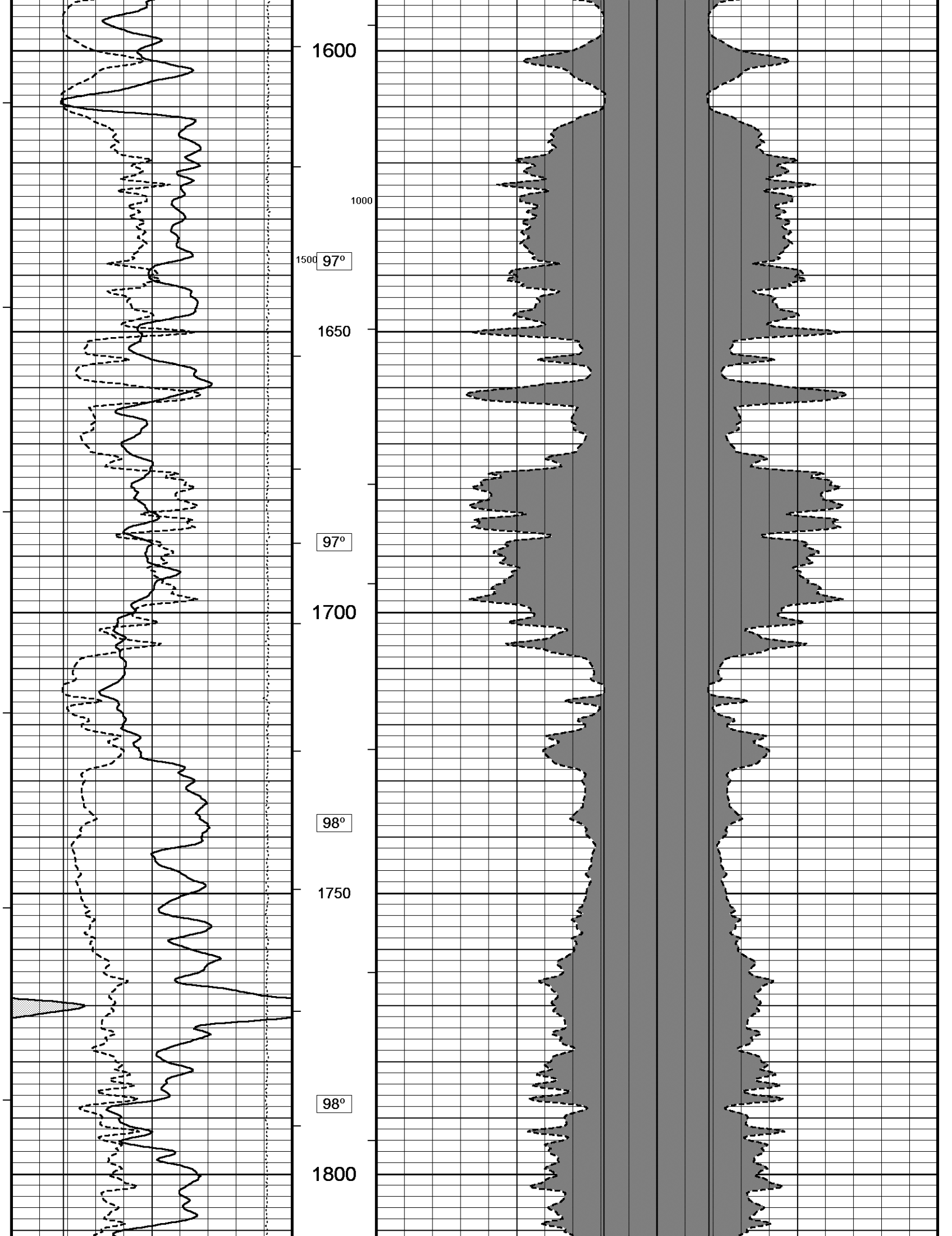


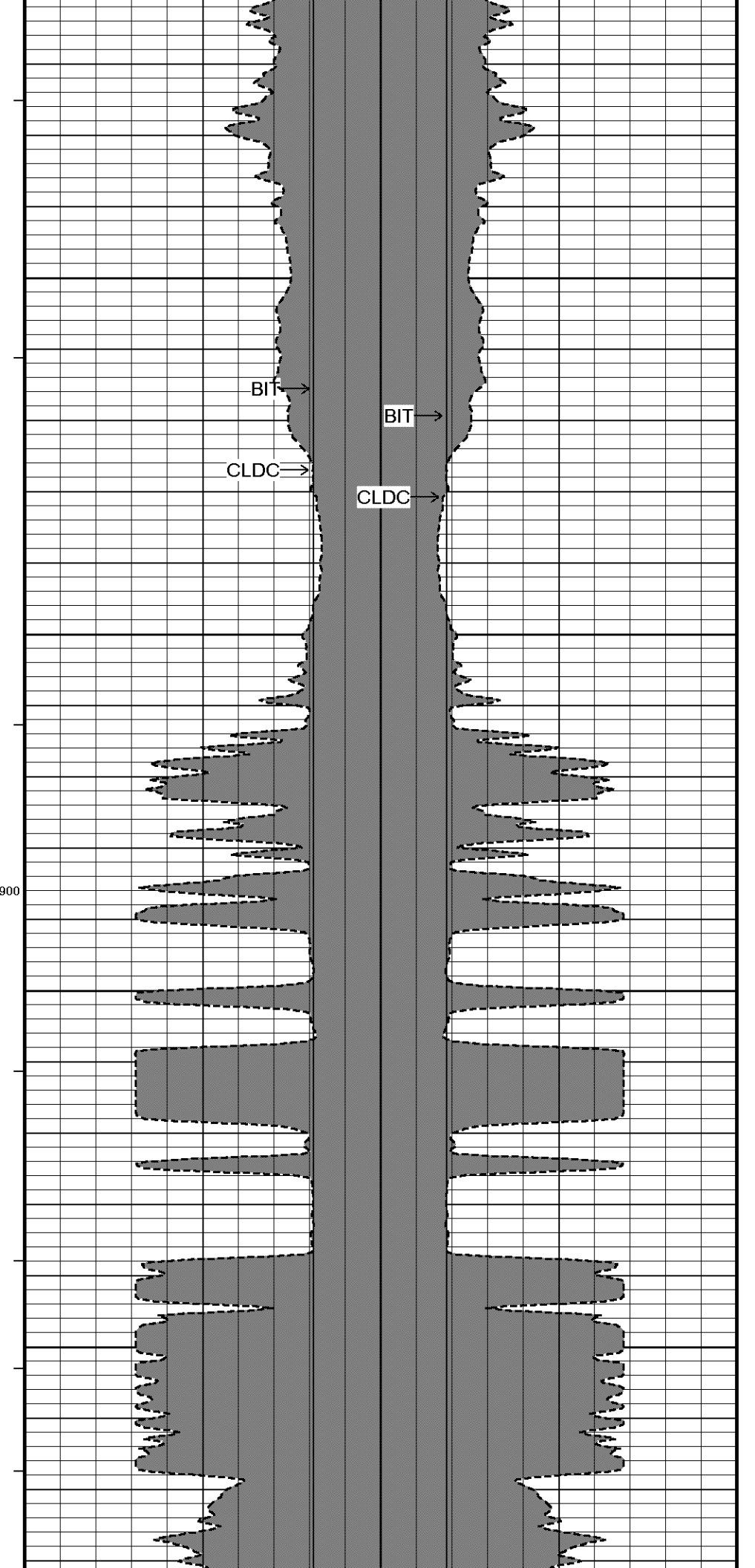
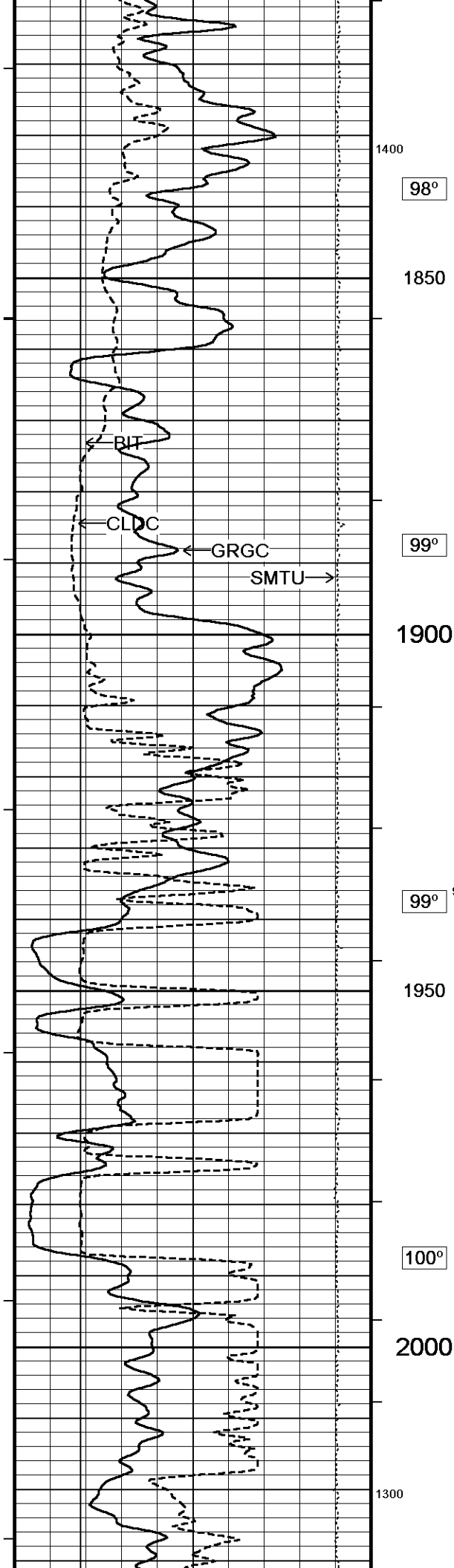


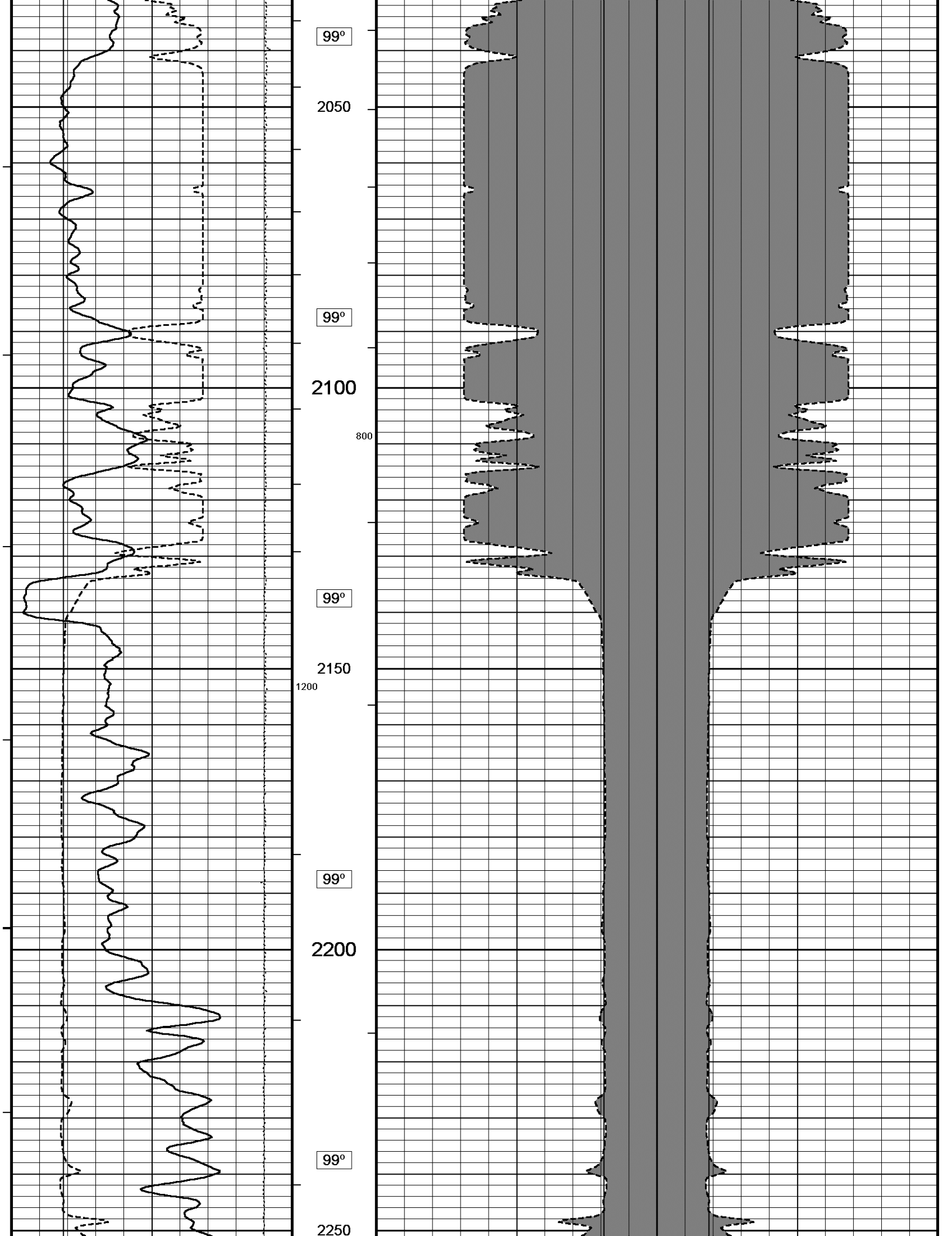


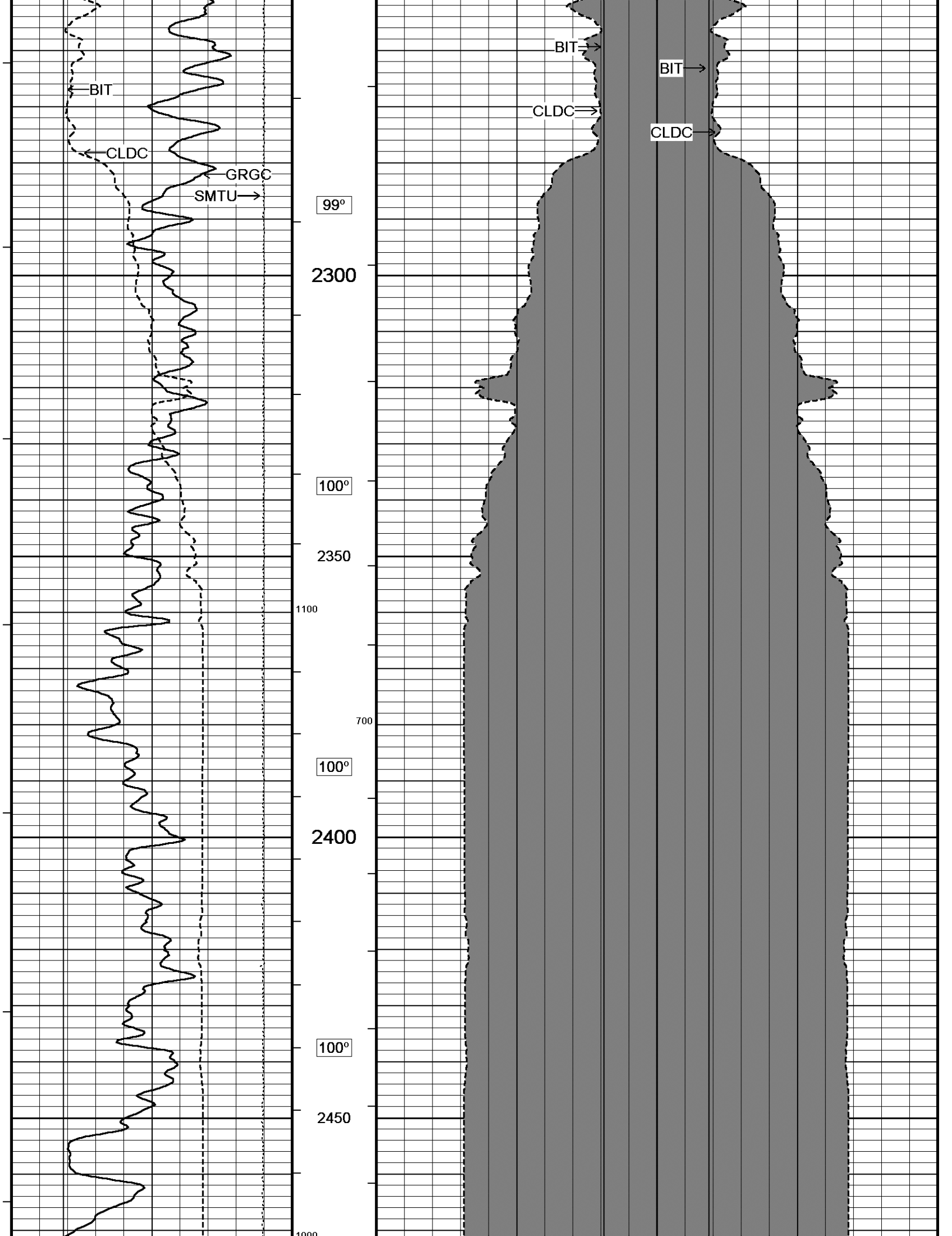


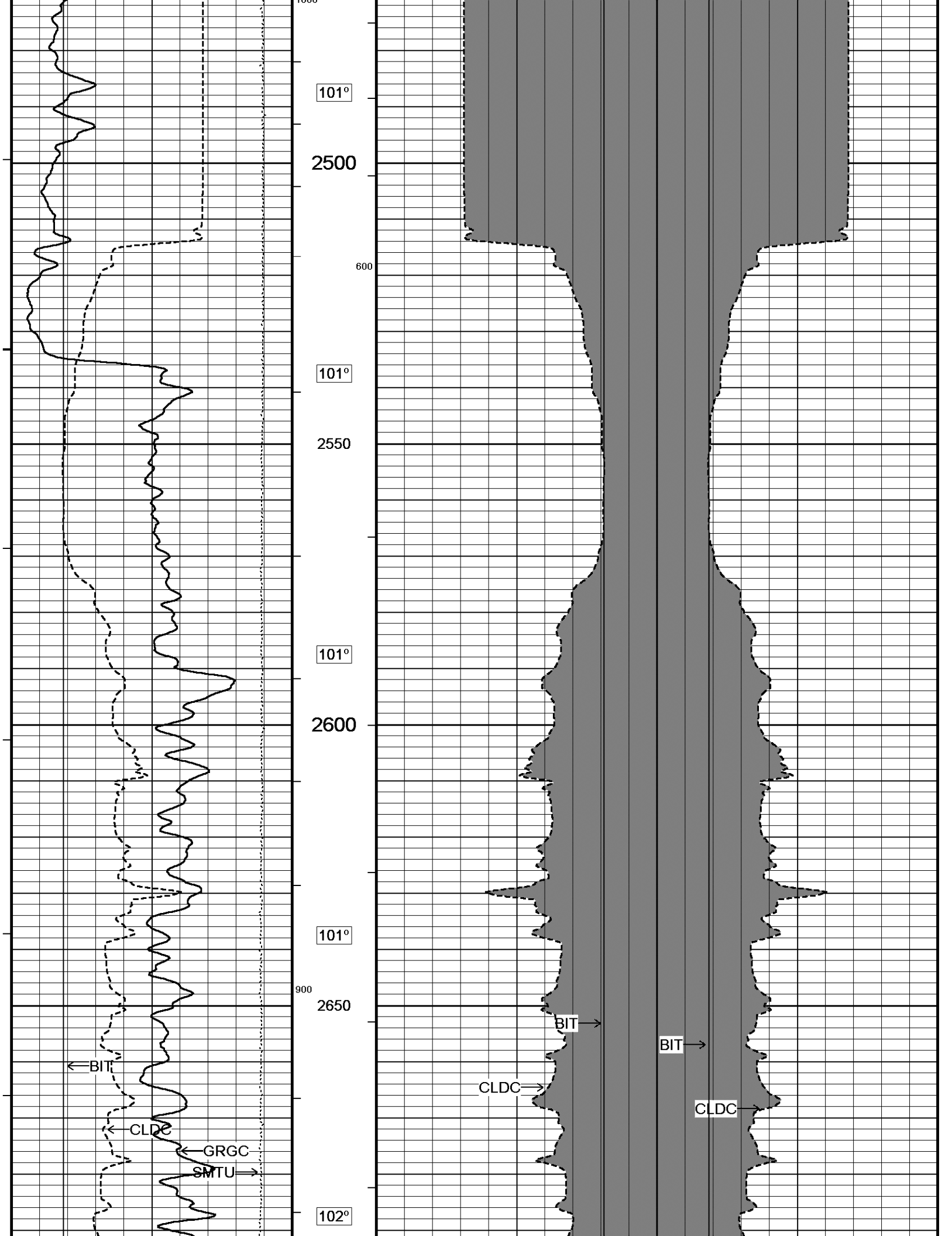


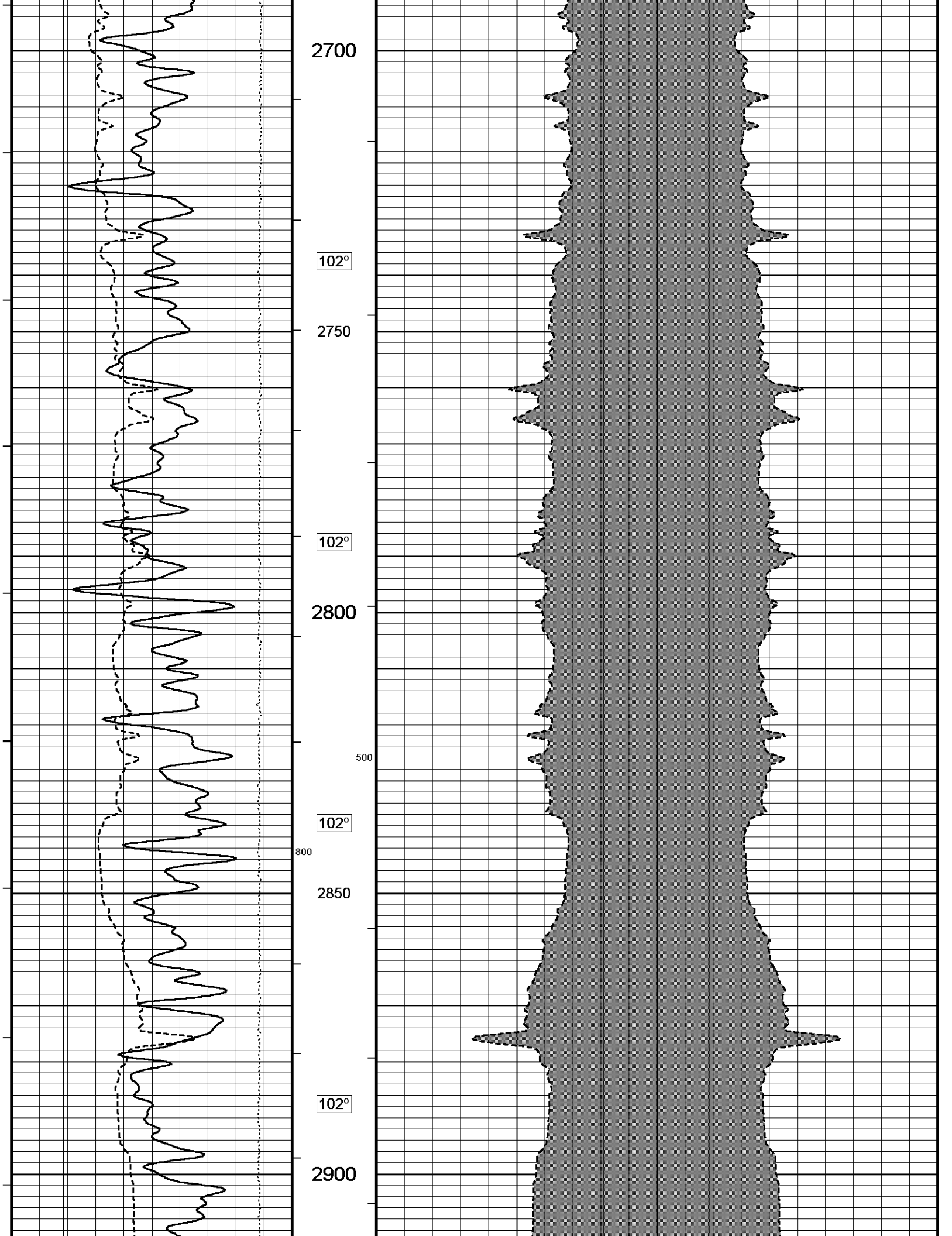


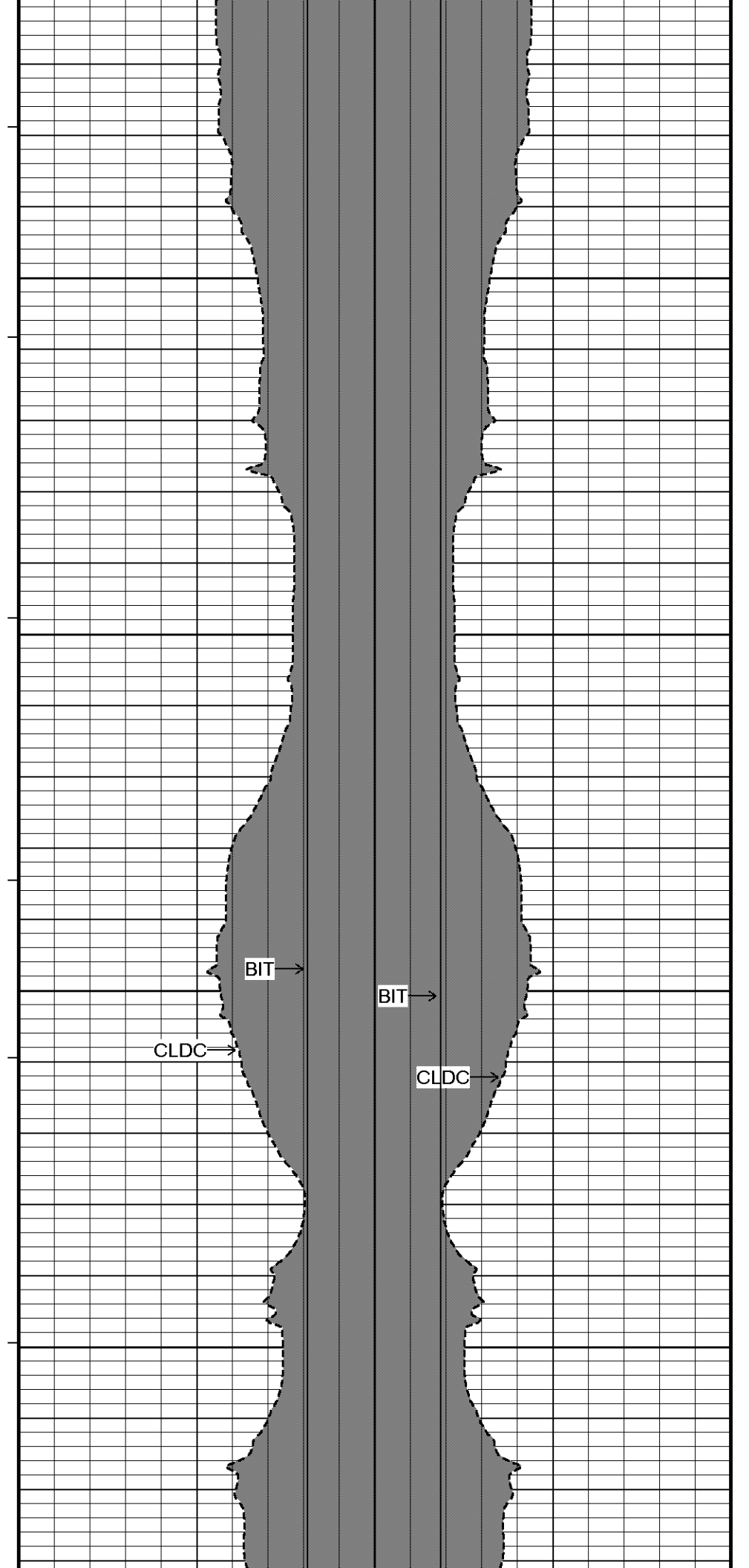
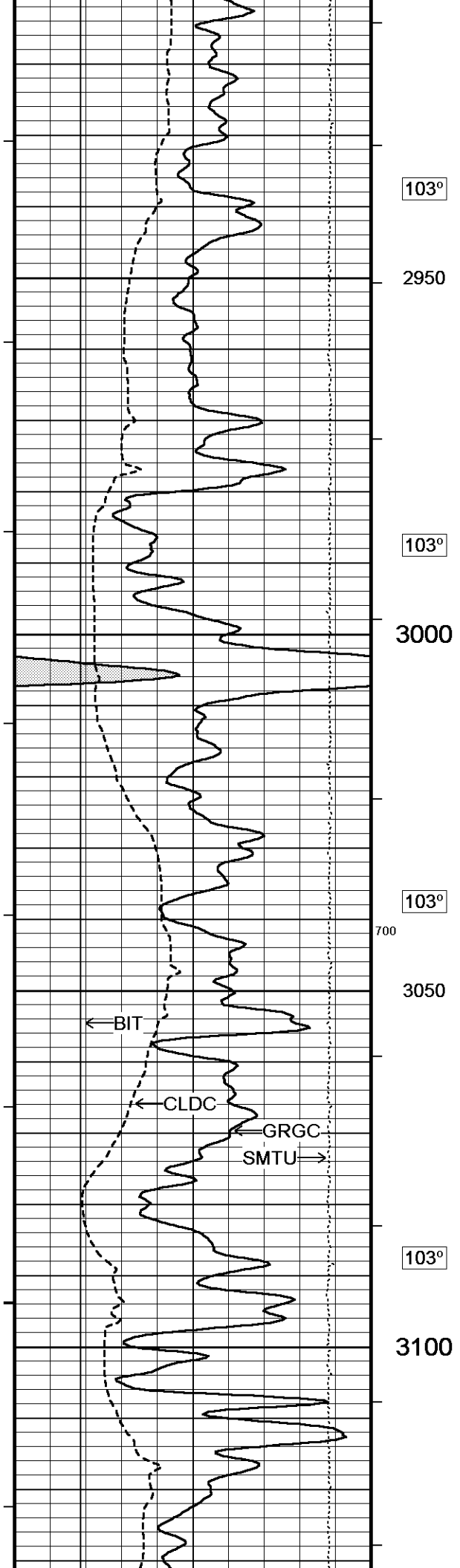


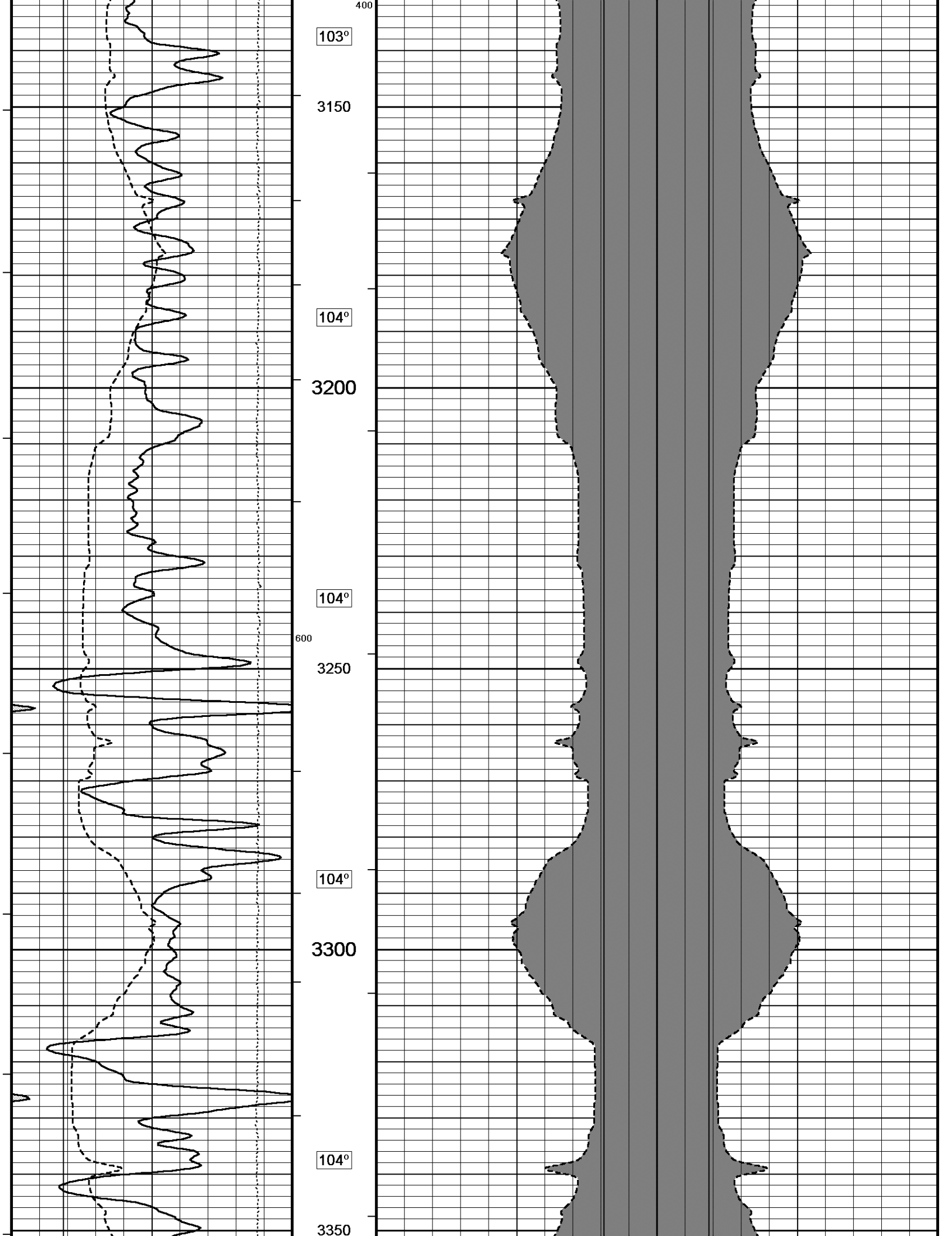


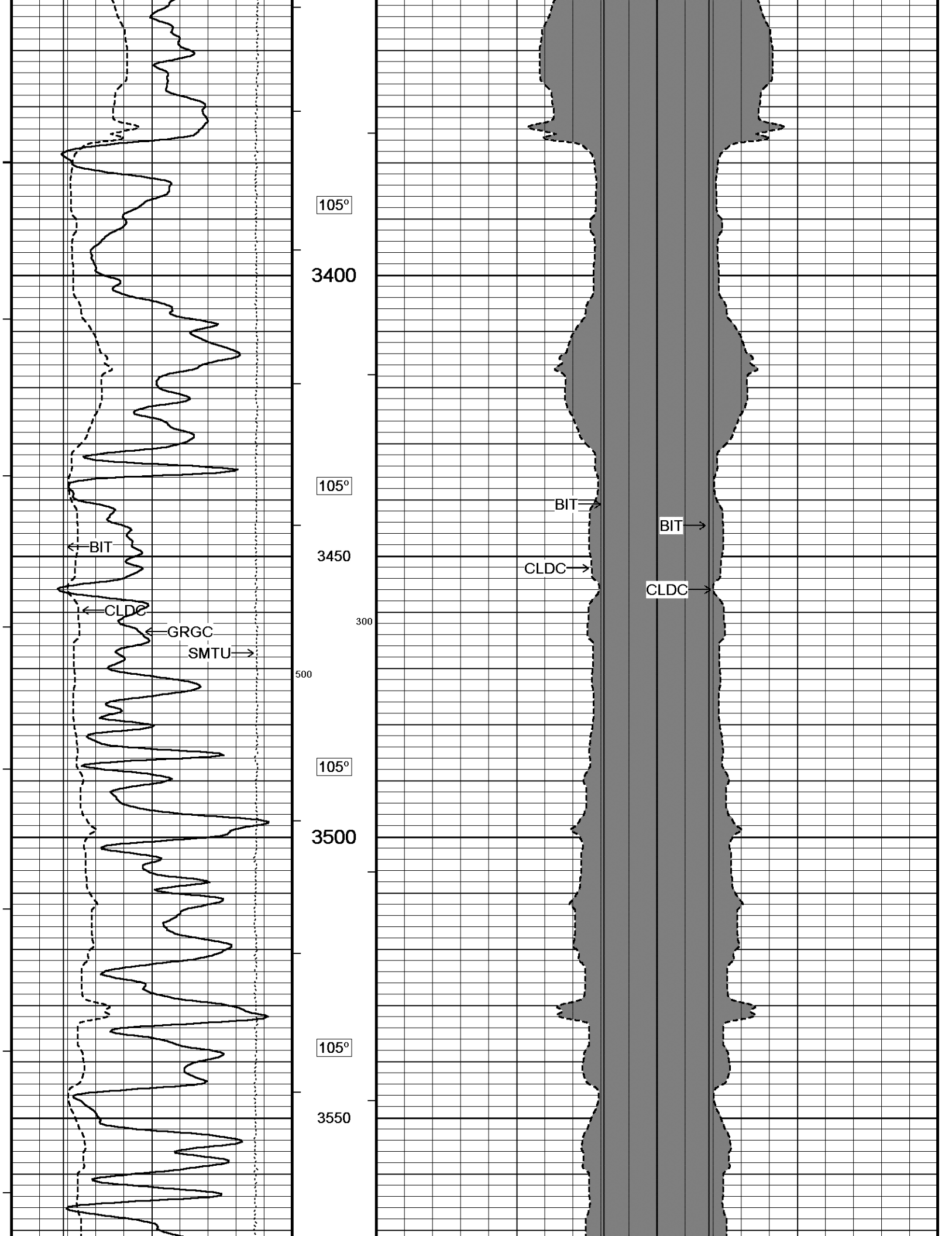


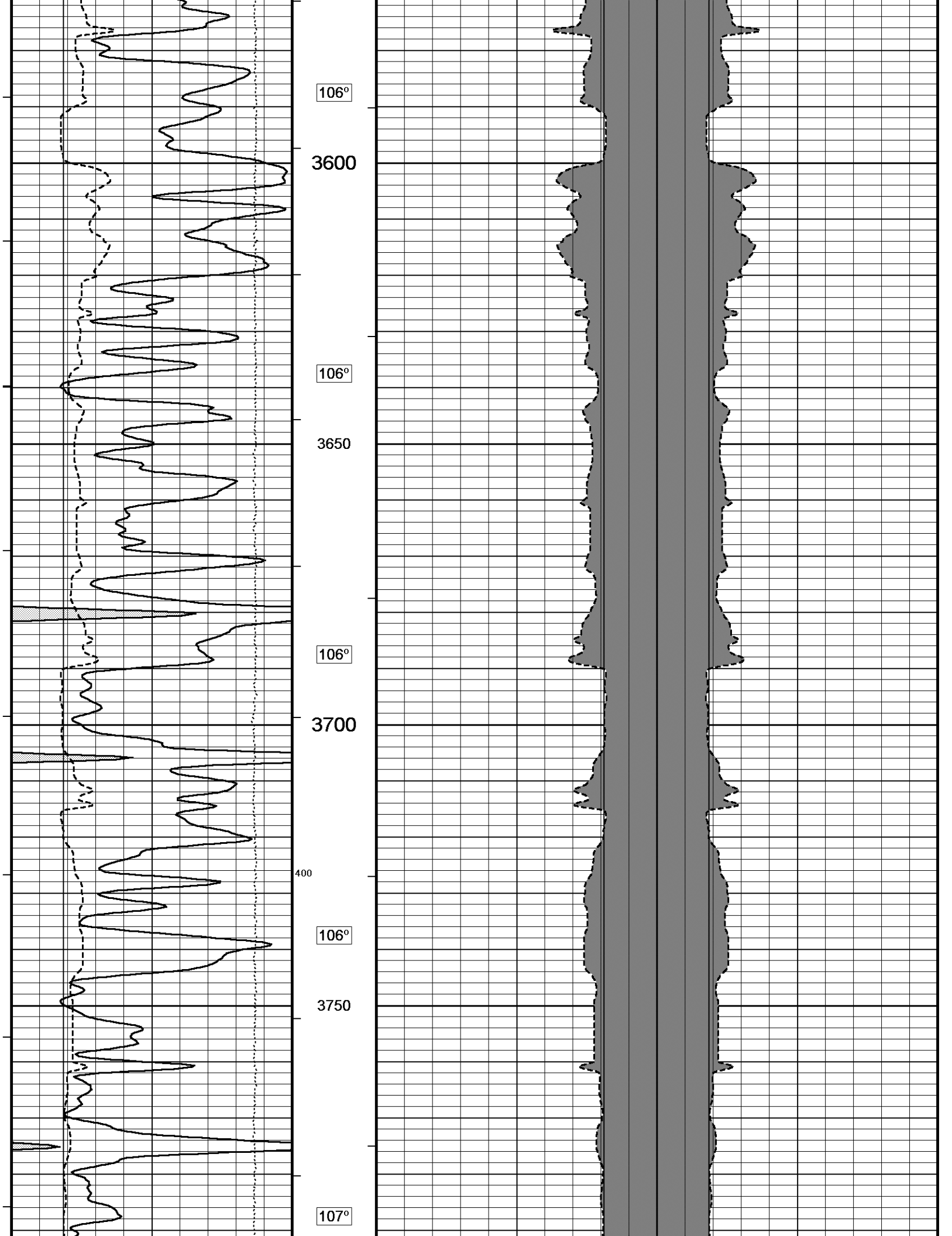


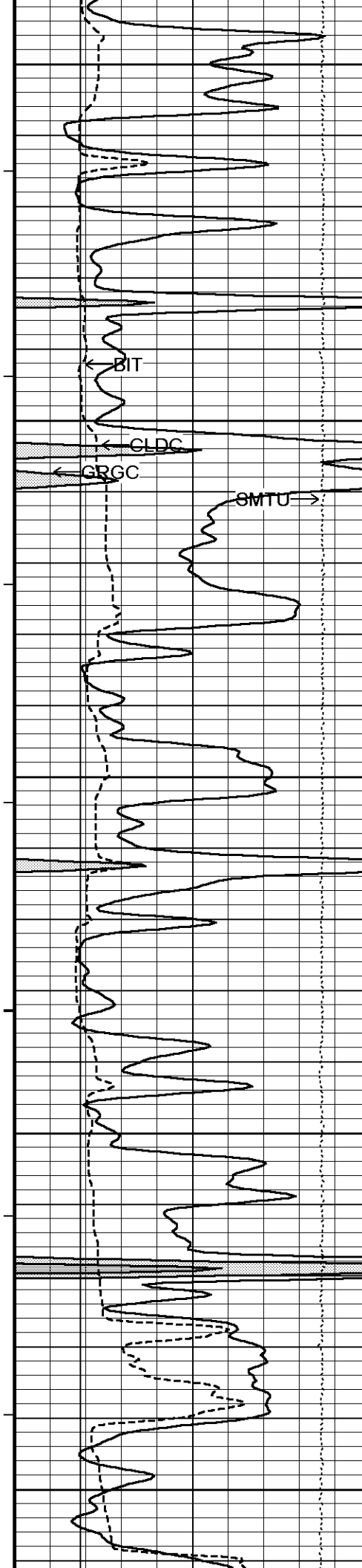












3800

107°

3850

107°

3900

107°

3950

107°

4000

200

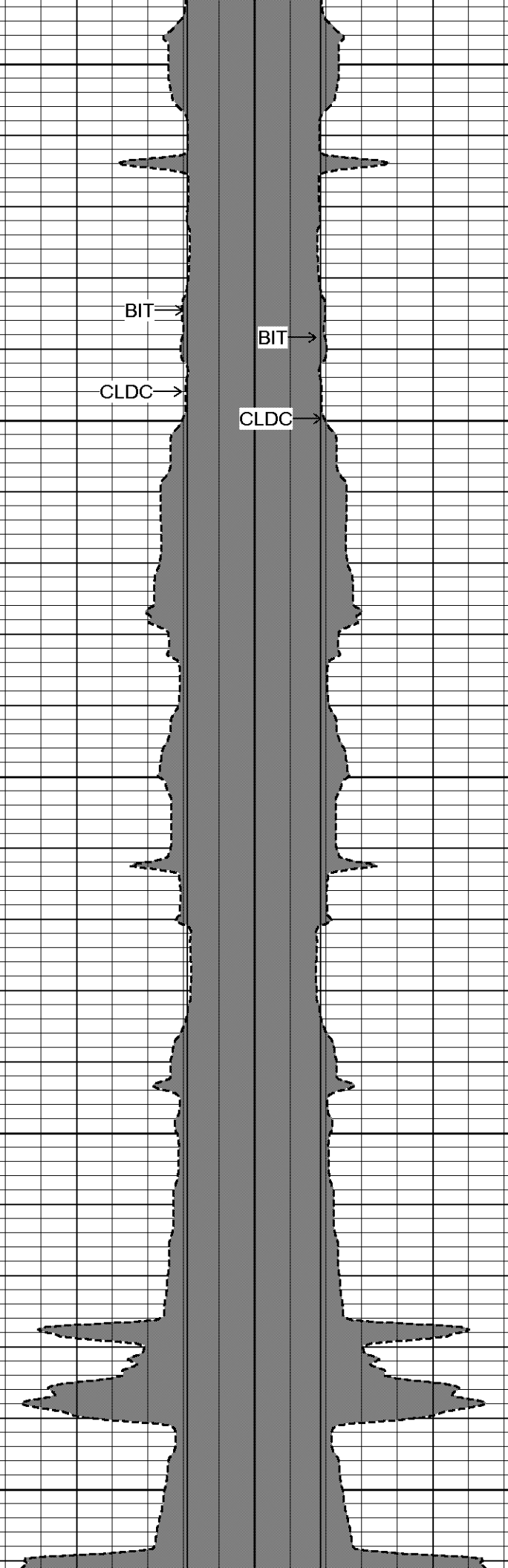
300

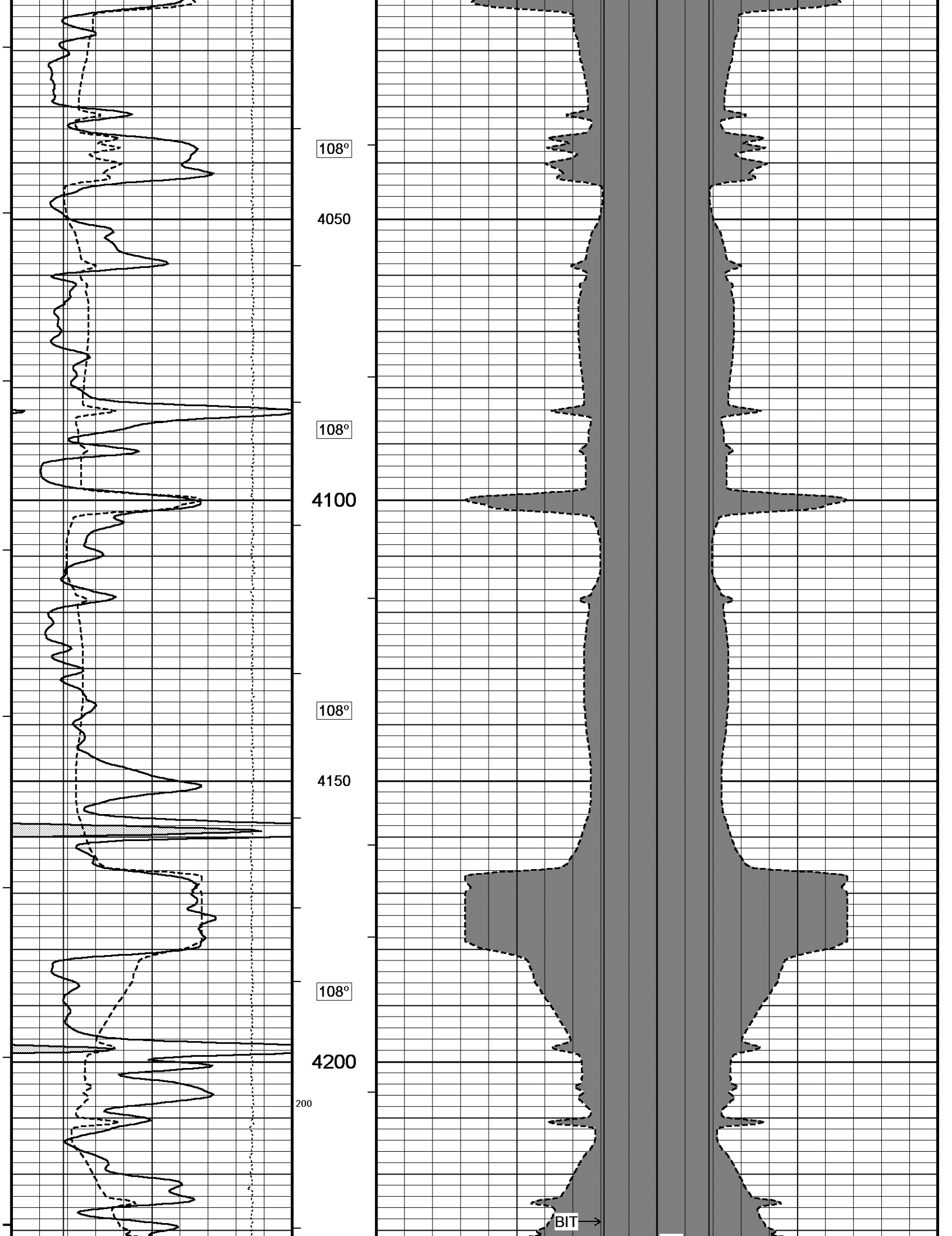
BIT →

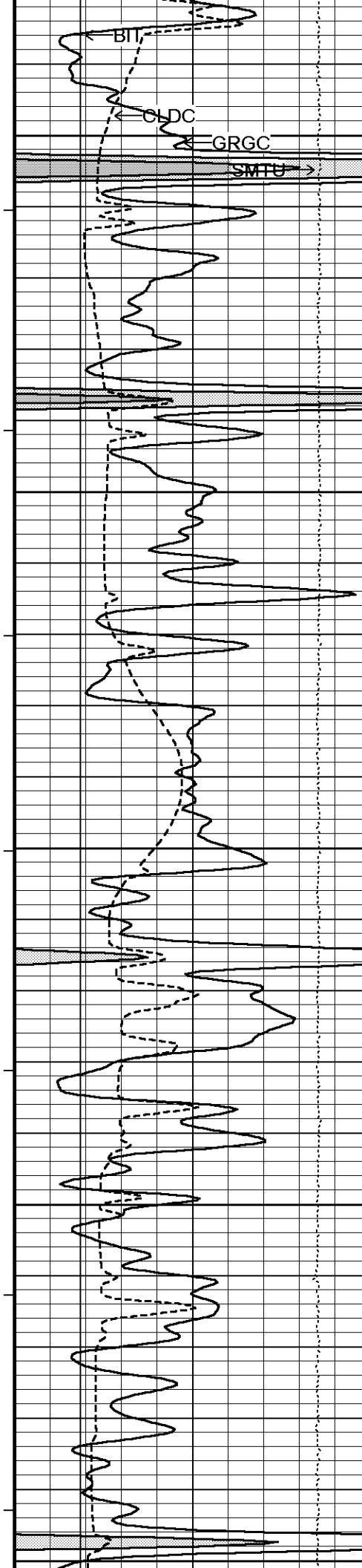
CLDC →

BIT →

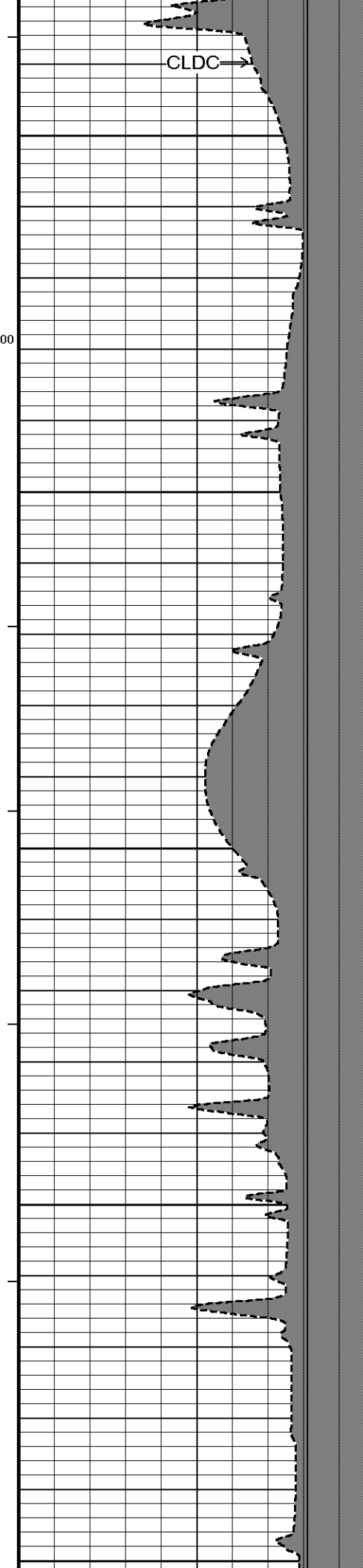
CLDC →



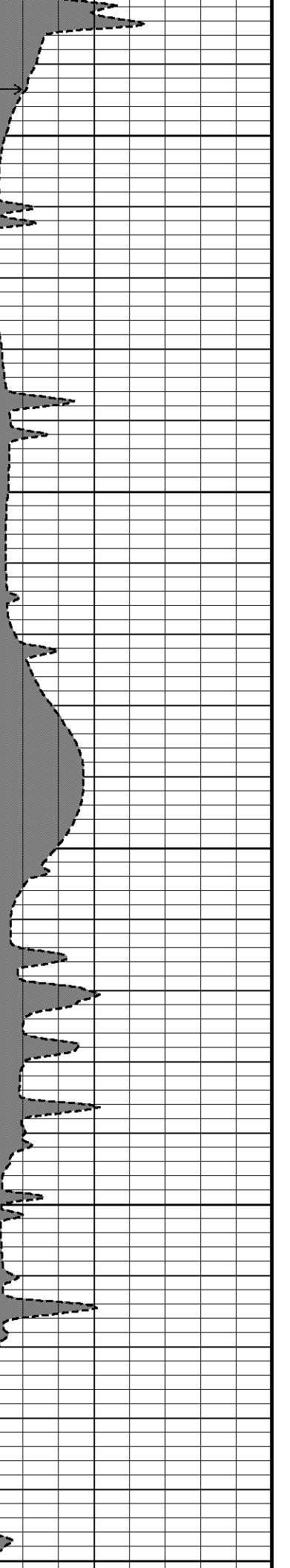


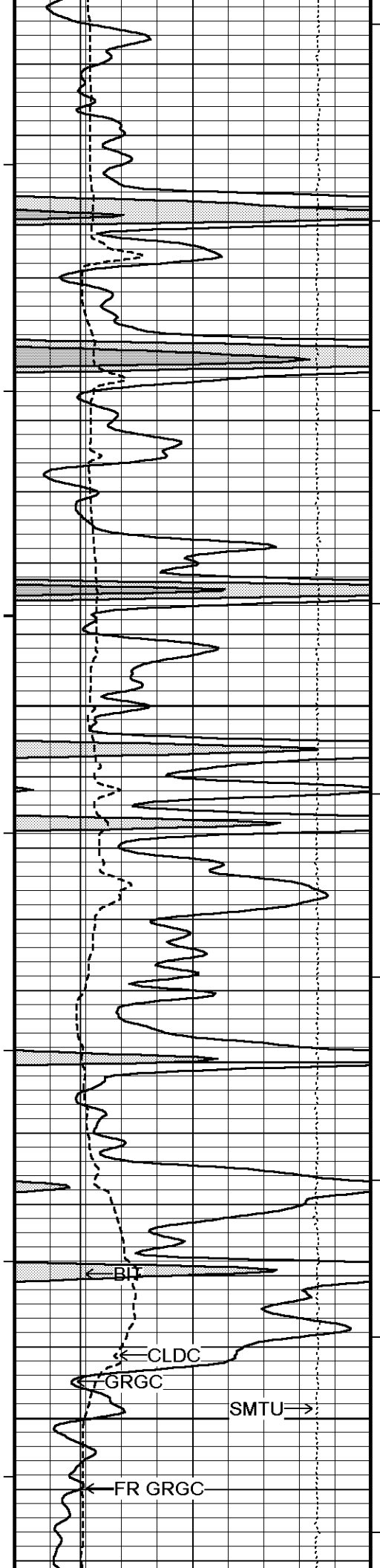


109°
4250
100
109°
4300
109°
4350
110°
4400
100
111°
4450



BIT
CLDC





111°

4500

112°

4550

112°

4600

113°

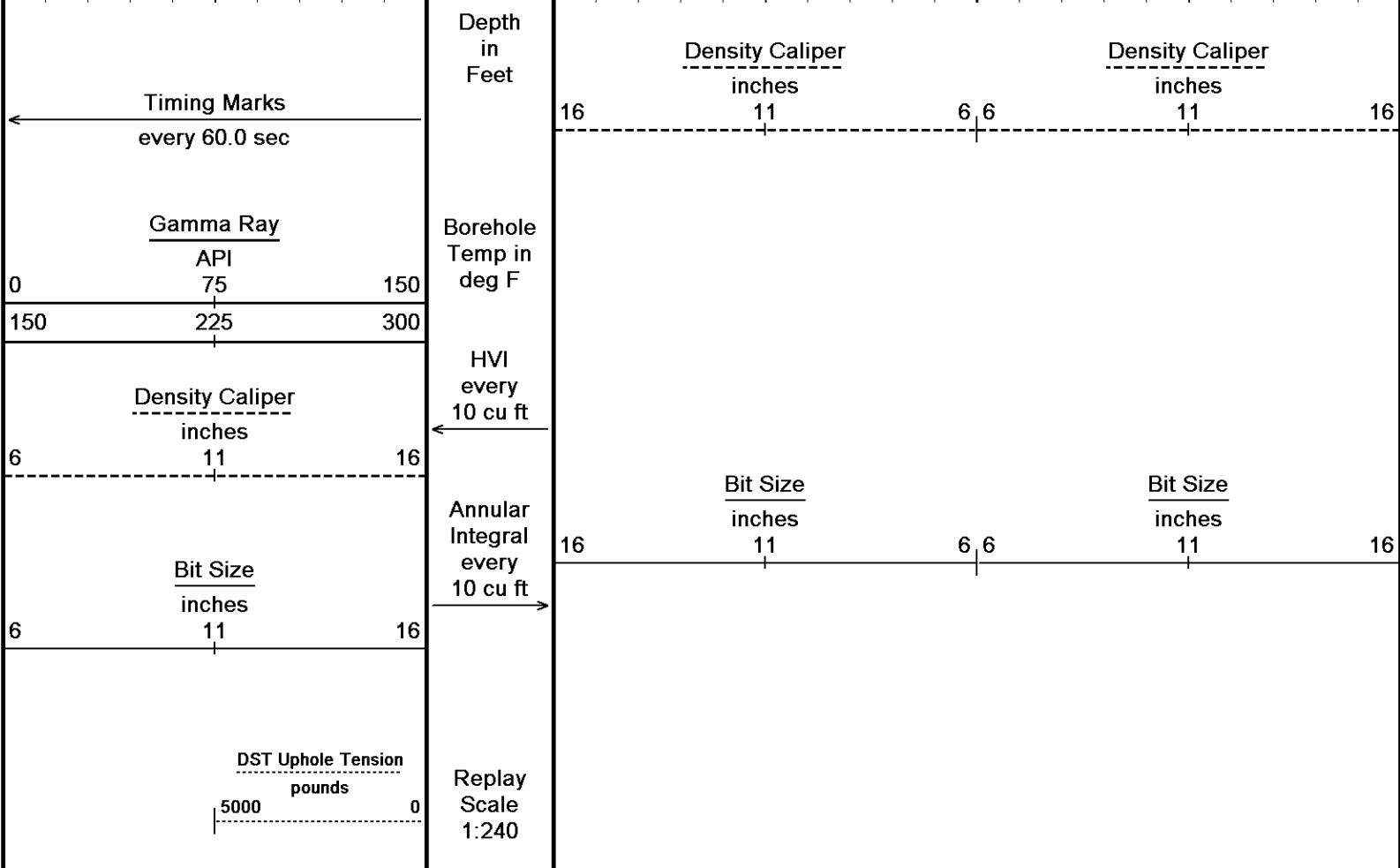
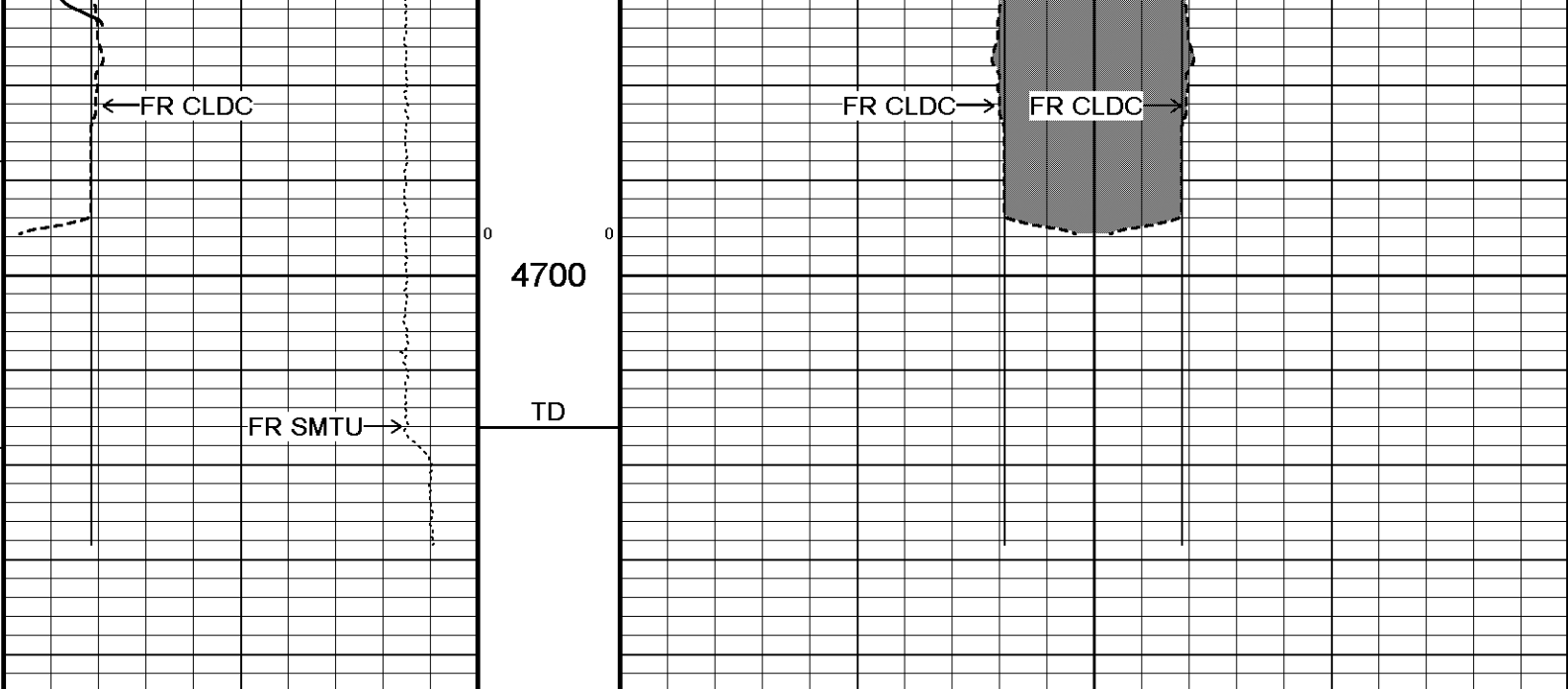
4650

BIT →

CLDC →

BIT →

CLDC →



Depth Based Data - Maximum Sampling Increment 10.0cm
 Plotted on 11-JUN-2014 21:05
 Filename: C:\Minimus 13.08.2113\Log\SHAKESPEARE...SHAKESPEARE CAMPBELL 4-17 MAIN.dta
 Recorded on 11-JUN-2014 18:33
 System Versions: Logged with 13.08.2113 Processed with 13.08.2113 Plotted with 13.08.2113

↑ 5 INCH MAIN ↑

DOWNHOLE EQUIPMENT

C:\Minimus 13.08.2113\Log\SHAKESPEARE CAMPBELL 4-17\SHAKESPEARE CAMPBELL 4-17 REPEAT.dta

Compact Comms Gamma
 MCG-C 208 LG: 8.70 ft WT: 63.9 lb OD: 2.244 in

56.02 ft GRGC - Gamma Ray
 53.11 ft CGXT - MCG External Temperature

Compact Micro-Resistivity
MMR-C.A 248 LG: 8.59 ft WT: 81.6 lb OD: 4.882 in

Compact Neutron
MDN-B.J 387 LG: 5.04 ft WT: 50.7 lb OD: 2.244 in

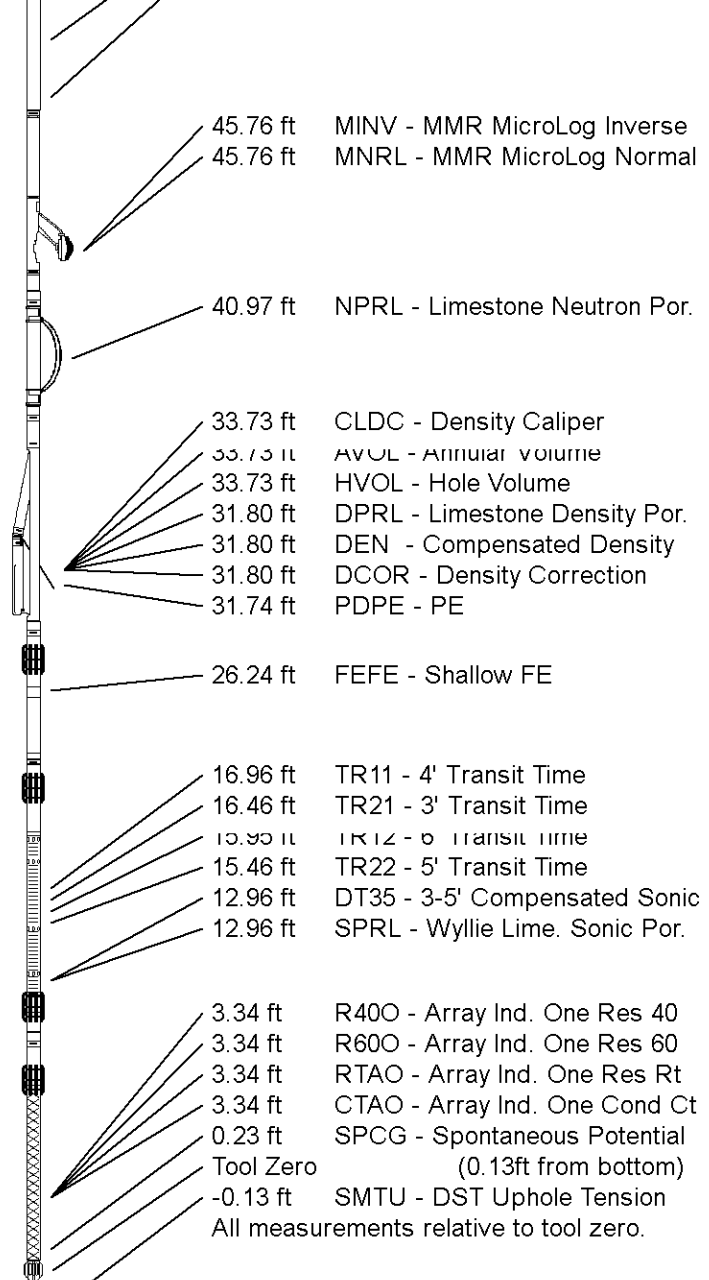
Compact Density/Caliper
MPD-D.A 480 LG: 9.59 ft WT: 90.4 lb OD: 2.449 in

Compact Focussed Electric
MFE-A.A 55 LG: 6.05 ft WT: 48.5 lb OD: 2.244 in

Compact Sonic
MSS-A.A 73 LG: 12.52 ft WT: 72.8 lb OD: 2.244 in

Compact Induction
MAI-A.A 5 LG: 10.81 ft WT: 48.5 lb OD: 2.244 in

Total Length: 61.30 ft Weight: 456.4 lb



COMPANY	SHAKESPEARE OIL. CO., INC.
WELL	CAMPBELL 4-17
FIELD	WILDCAT
PROVINCE/COUNTY	LOGAN
COUNTRY/STATE	U.S.A. / KANSAS

Elevation Kelly Bushing	3043.00	feet	First Reading	4682.00	feet
Elevation Drill Floor	3041.00	feet	Depth Driller	4720.00	feet
Elevation Ground Level	3033.00	feet	Depth Logger	4716.00	feet



Weatherford®

CALIPER LOG

