



**COMPLETION
& PRODUCTION
SERVICES CO.**

**SONIC
LOG**

Company	LOTUS OPERATING COMPANY, LLC.		
Well	MOLZ "L" #8		
Field	STRANATHAN		
County	BARBER	State	KANSAS
Location:	API # : 15-007-24159-0000		Other Services CDL/CNL/PE DIL/MEL
	660' FNL & 1980' FEL		
	SEC 1	TWP 35S	RGE 12W
Permanent Datum	GROUND LEVEL Elevation 1402		
Log Measured From	KELLY BUSHING 13' A.G.L.		
Drilling Measured From	KELLY BUSHING		
Elevation	K.B. 1415 D.F. 1413 G.L. 1402		

Date	4/13/14
Run Number	TWO
Depth Driller	5584
Depth Logger	5592
Bottom Logged Interval	5582
Top Log Interval	3700
Casing Driller	10 3/4" @ 293
Casing Logger	293
Bit Size	7 7/8"
Type Fluid in Hole	CHEMICAL MUD
Density / Viscosity	9.4/52
pH / Fluid Loss	10.0/9.2
Source of Sample	FLOWLINE
Rm @ Meas. Temp	1.05 @ 86F
Rmf @ Meas. Temp	0.79 @ 86F
Rmc @ Meas. Temp	1.26 @ 86F
Source of Rmf / Rmc	MEASUREMENT
Rm @ BHT	0.69 @ 130F
Time Circulation Stopped	2 HOURS
Time Logger on Bottom	
Maximum Recorded Temperature	130F
Equipment Number	4010
Location	HAYS, KANSAS
Recorded By	JEFF GRONWEG
Witnessed By	TIM HELLMAN

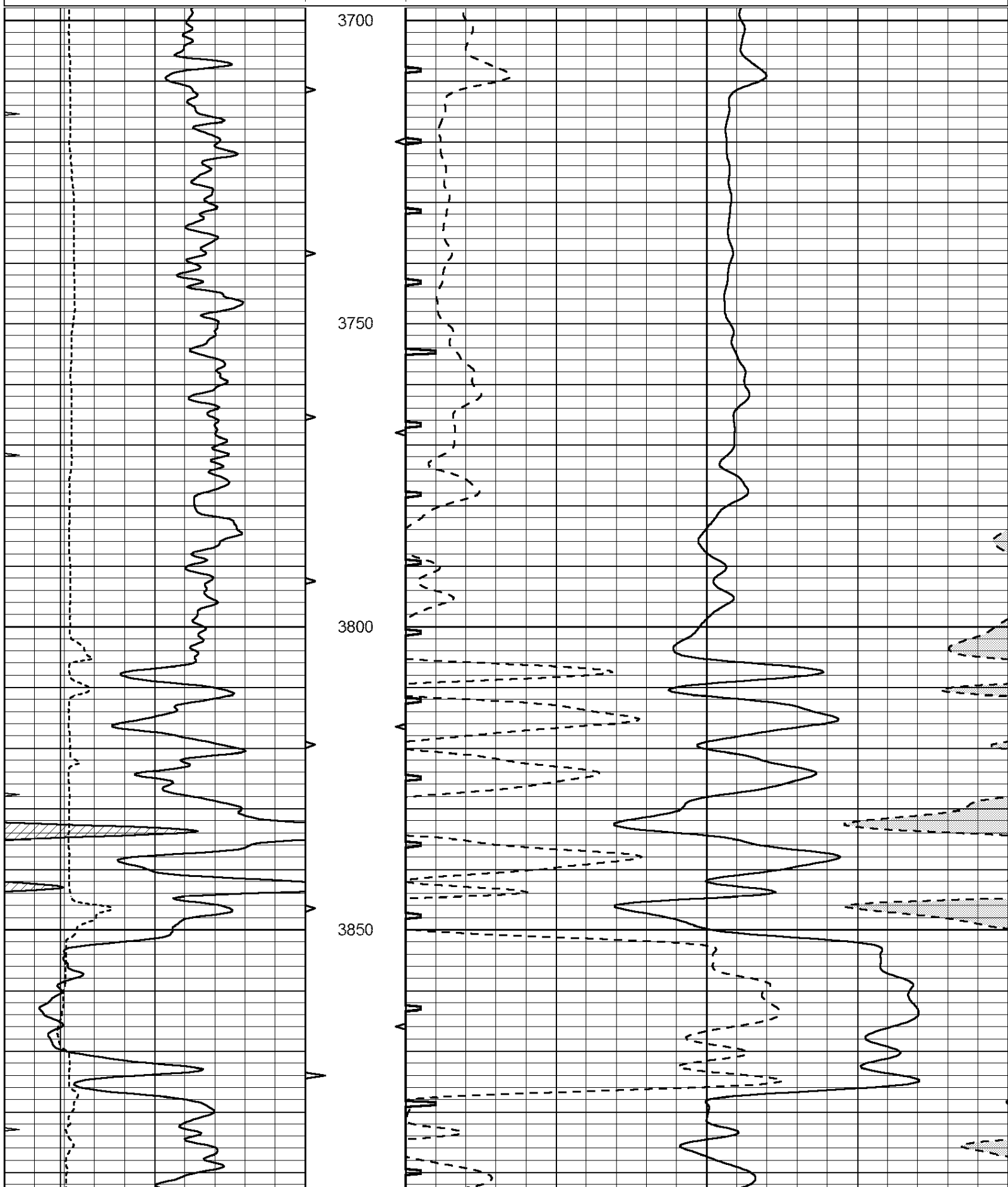
<<< Fold Here >>>

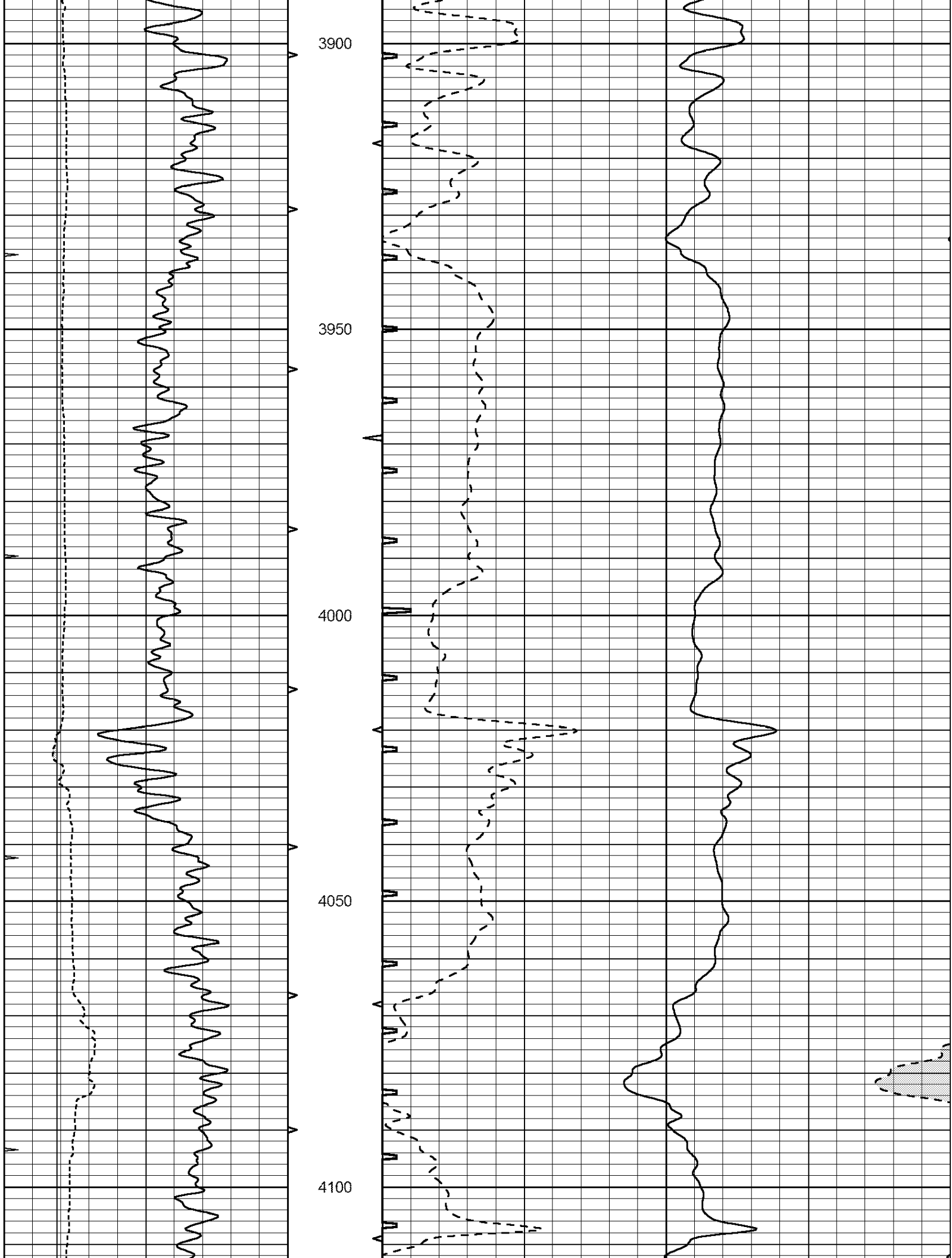
All interpretations are opinions based on inferences from electrical or other measurements and we cannot and do not guarantee the accuracy or correctness of any interpretation, and we shall not, except in the case of gross or willful negligence on our part, be liable or responsible for any loss, costs, damages, or expenses incurred or sustained by anyone resulting from any interpretation made by any of our officers, agents or employees. These interpretations are also subject to our general terms and conditions set out in our current Price Schedule.

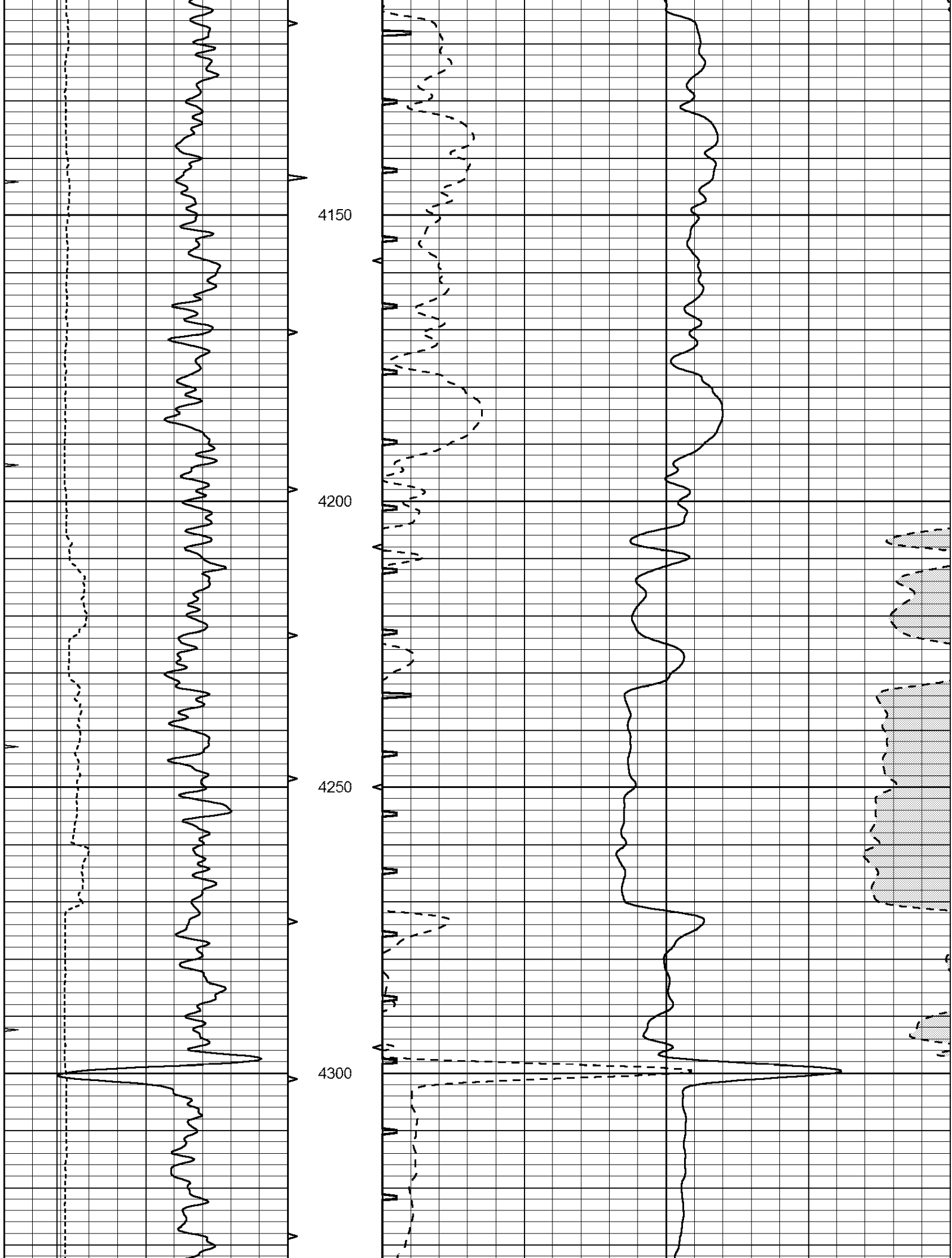
Comments

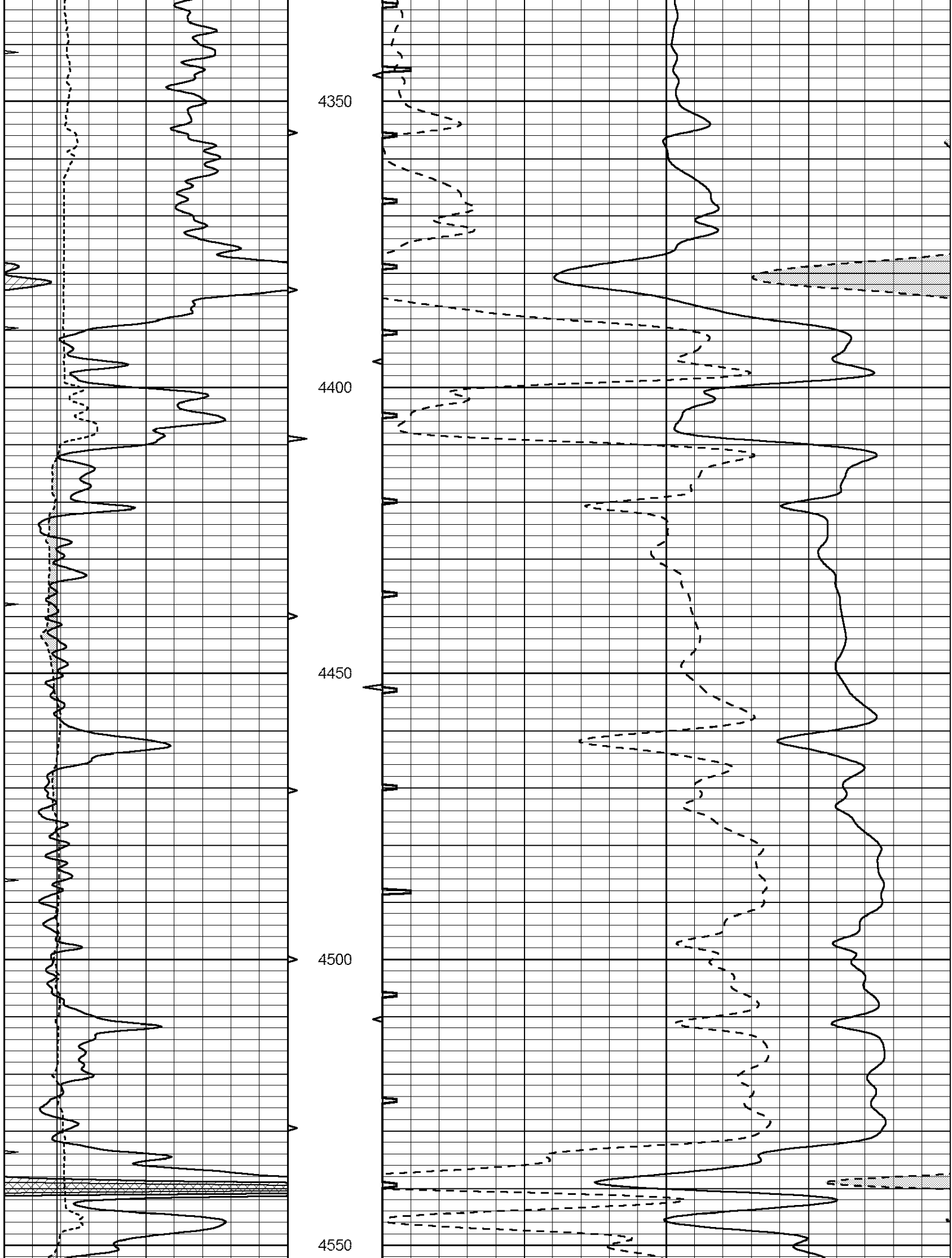
THANK YOU FOR USING NABORS, HAYS, KS. (785) 628-6395
 DIRECTIONS:
 MEDICINE LODGE SOUTH TO INTERSECTION OF HWYS 281 & 14
 1/2 MILE NORTH - WEST IN TO FARMHOUSE - SOUTH INTO

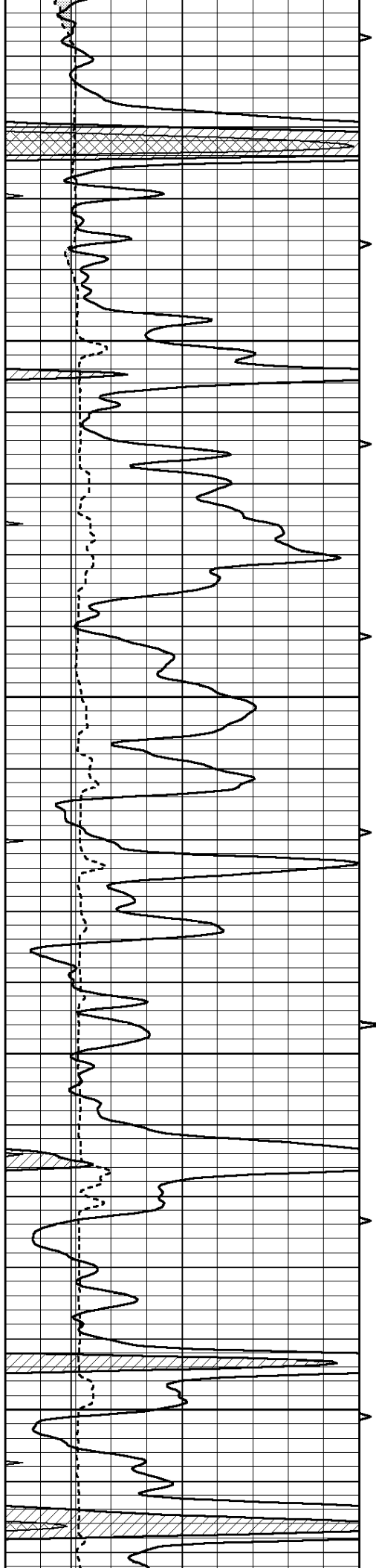
0	GAMMA RAY (GAPI)	150	ABHV	140	DELTA TIME (usec/ft)	40
6	CALIPER (in)	16	10 (ft3) 0	30	SONIC POROSITY (pu)	-10
0	MINMK	20	TBHV	0	ITT (msec)	20
			0 (ft3) 10			









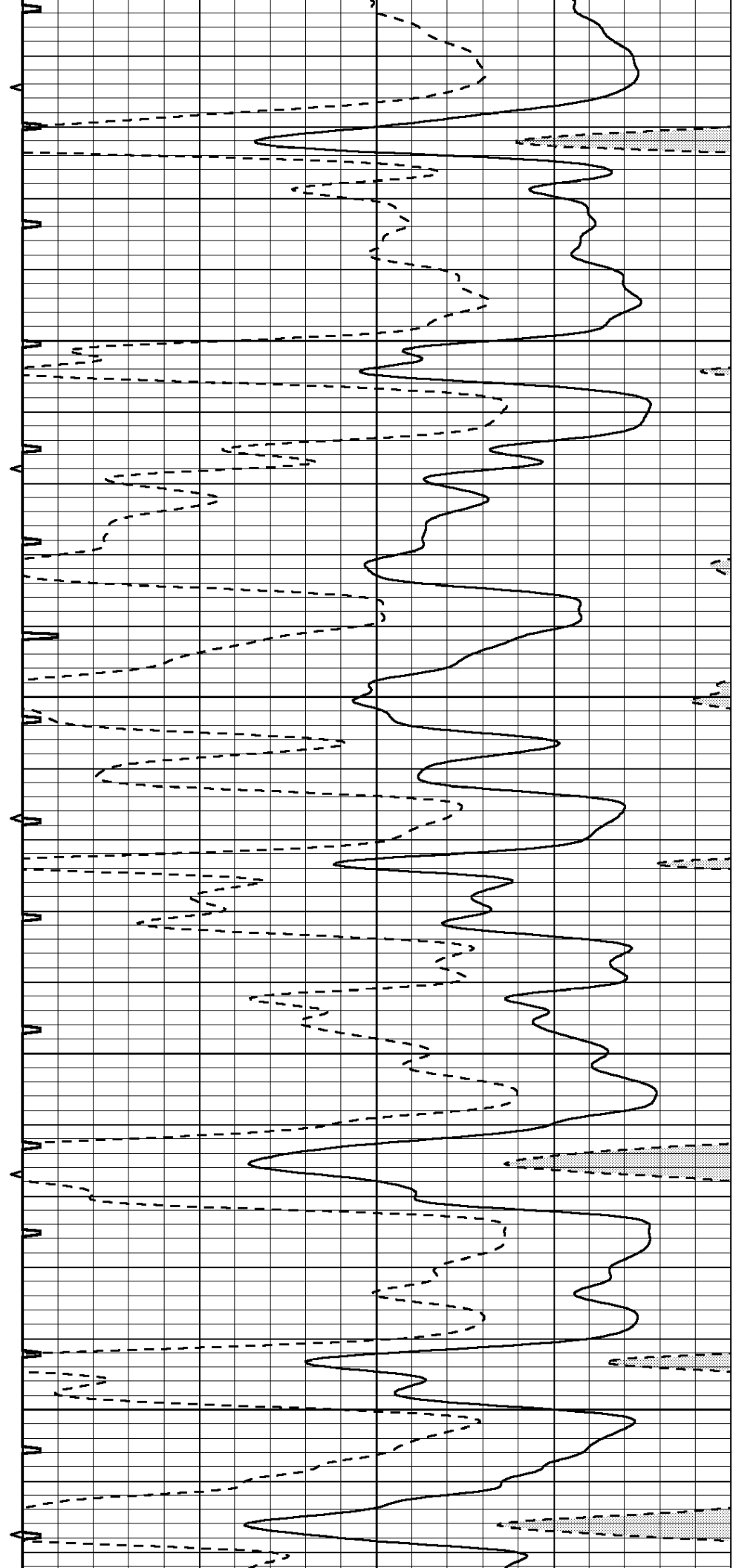


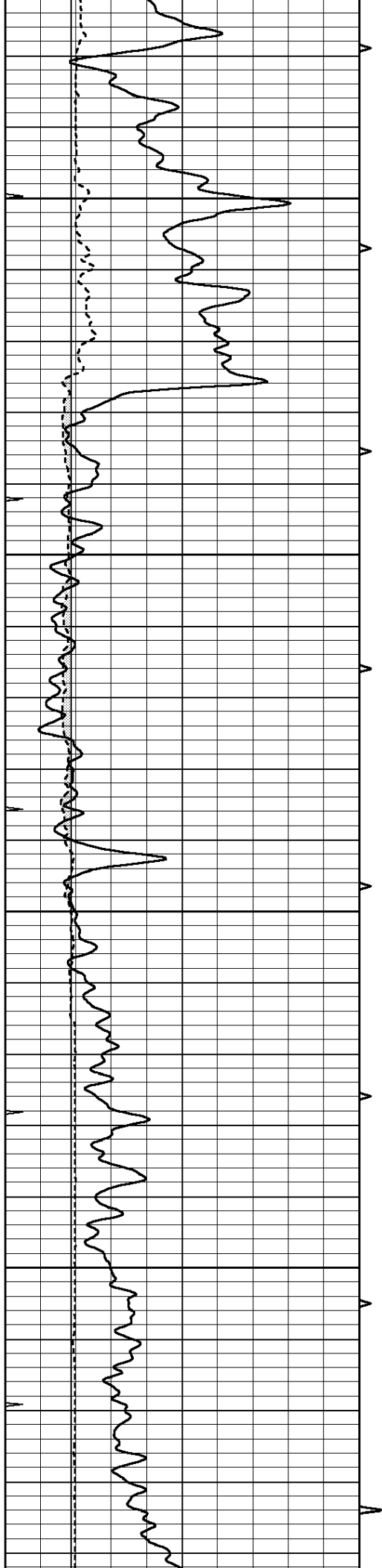
4600

4650

4700

4750



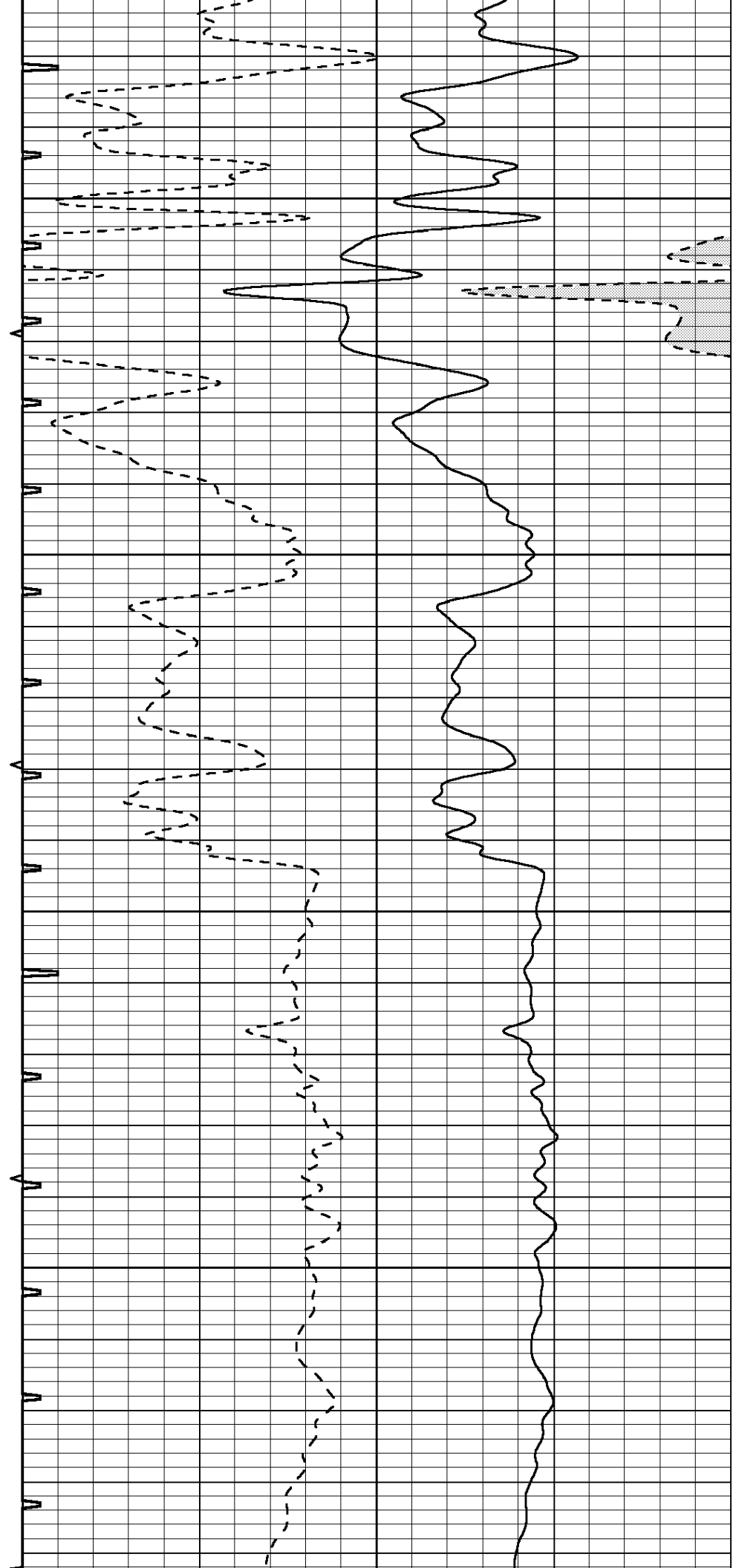


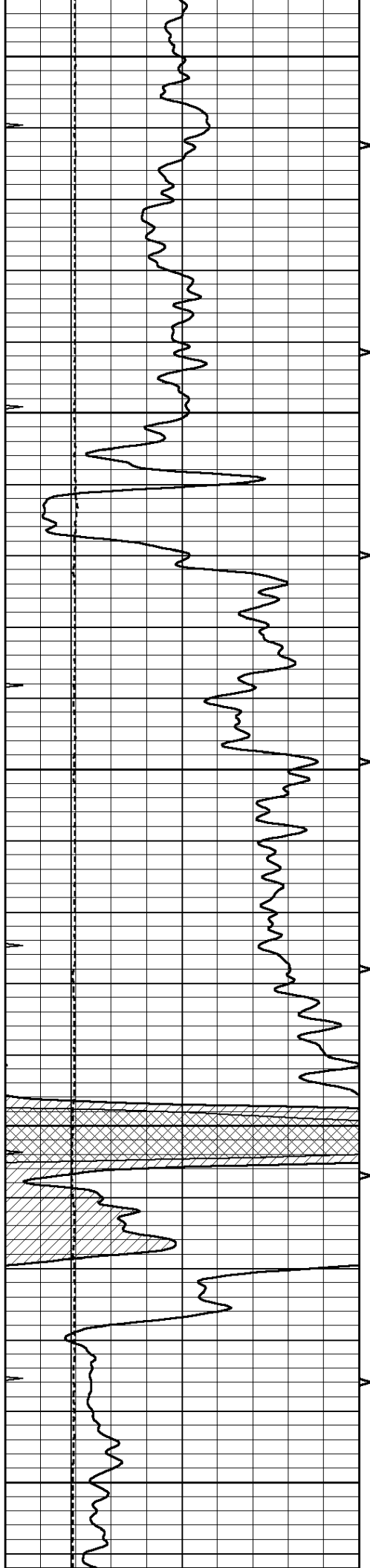
4800

4850

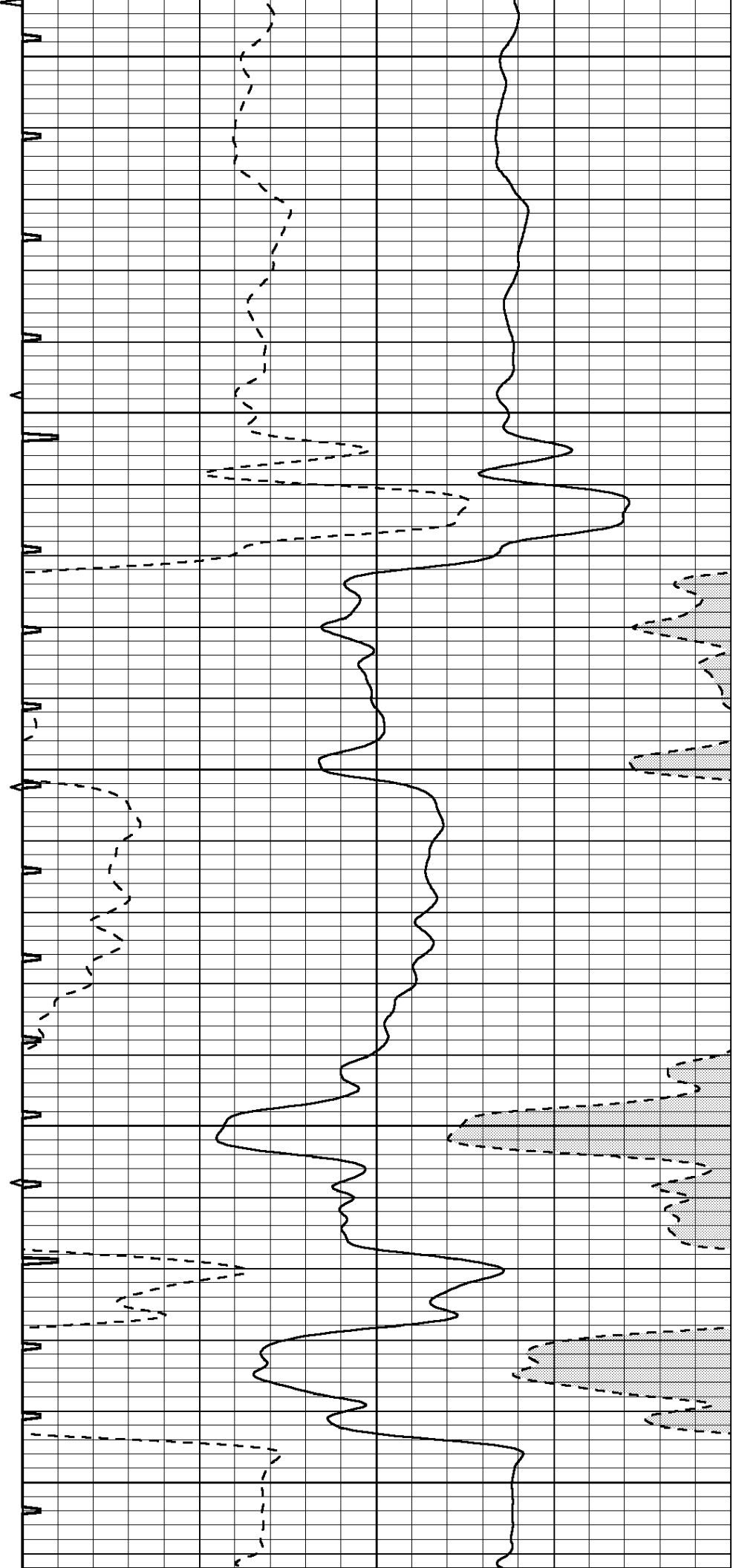
4900

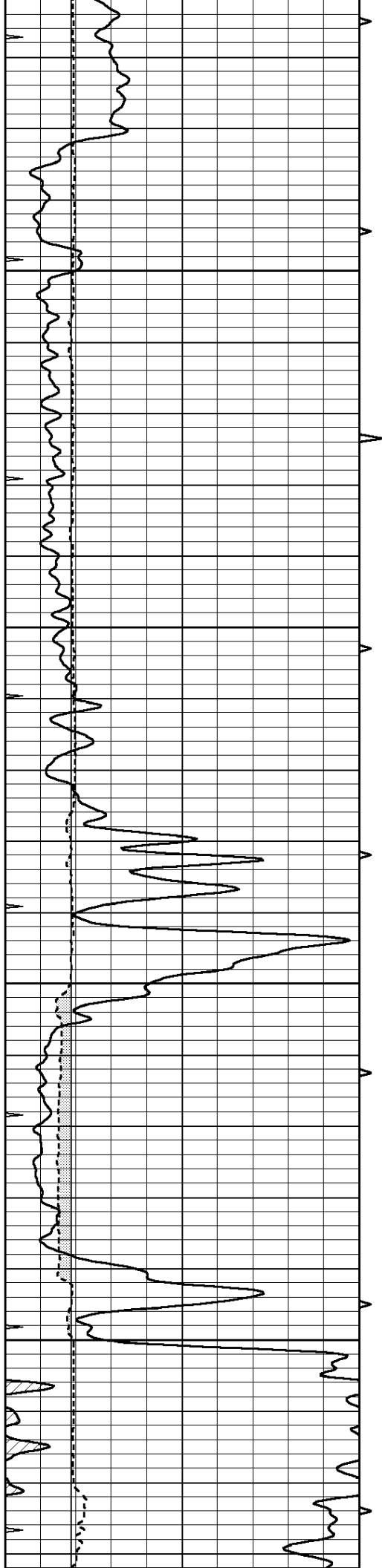
4950





5000
5050
5100
5150
5200



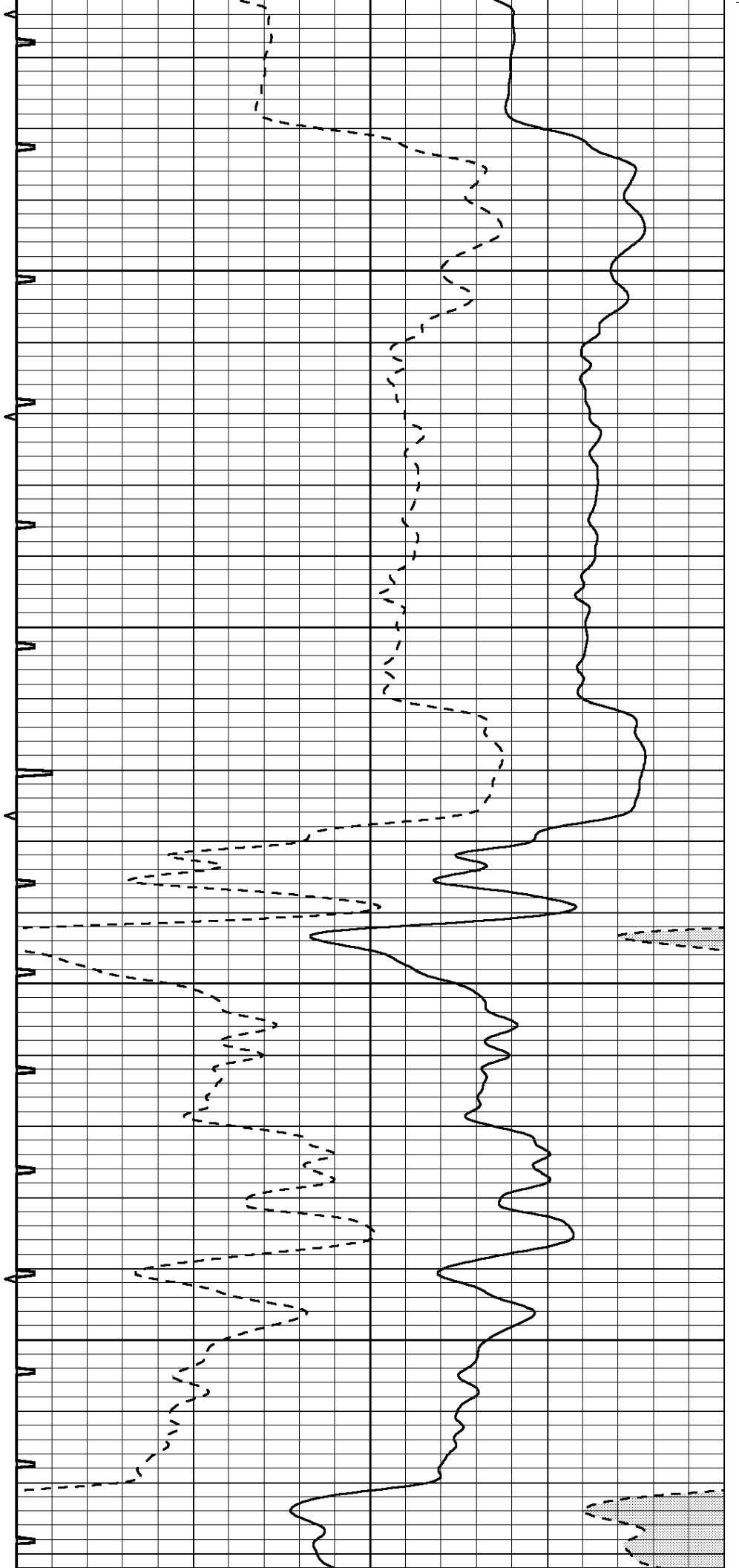


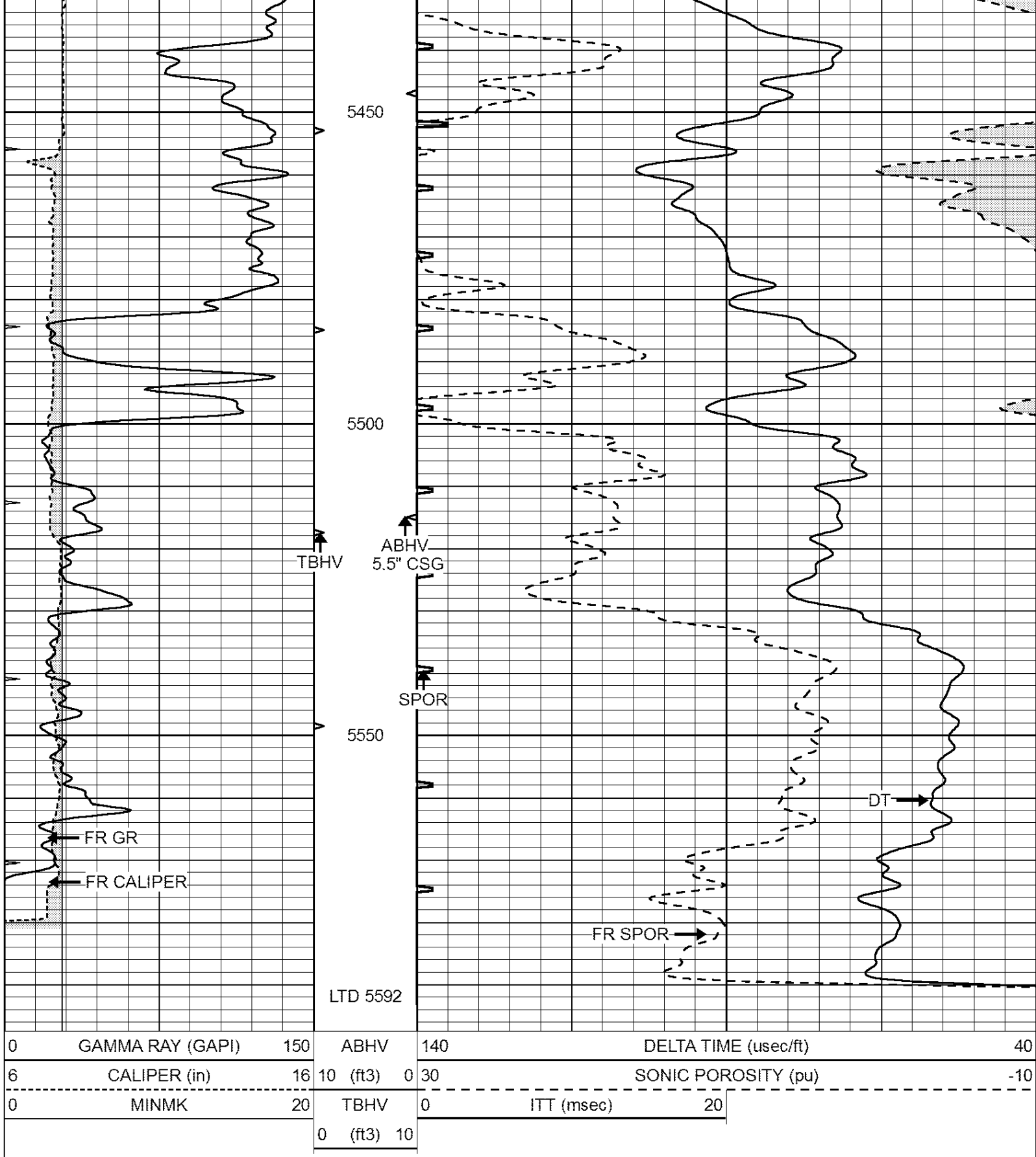
5250

5300

5350

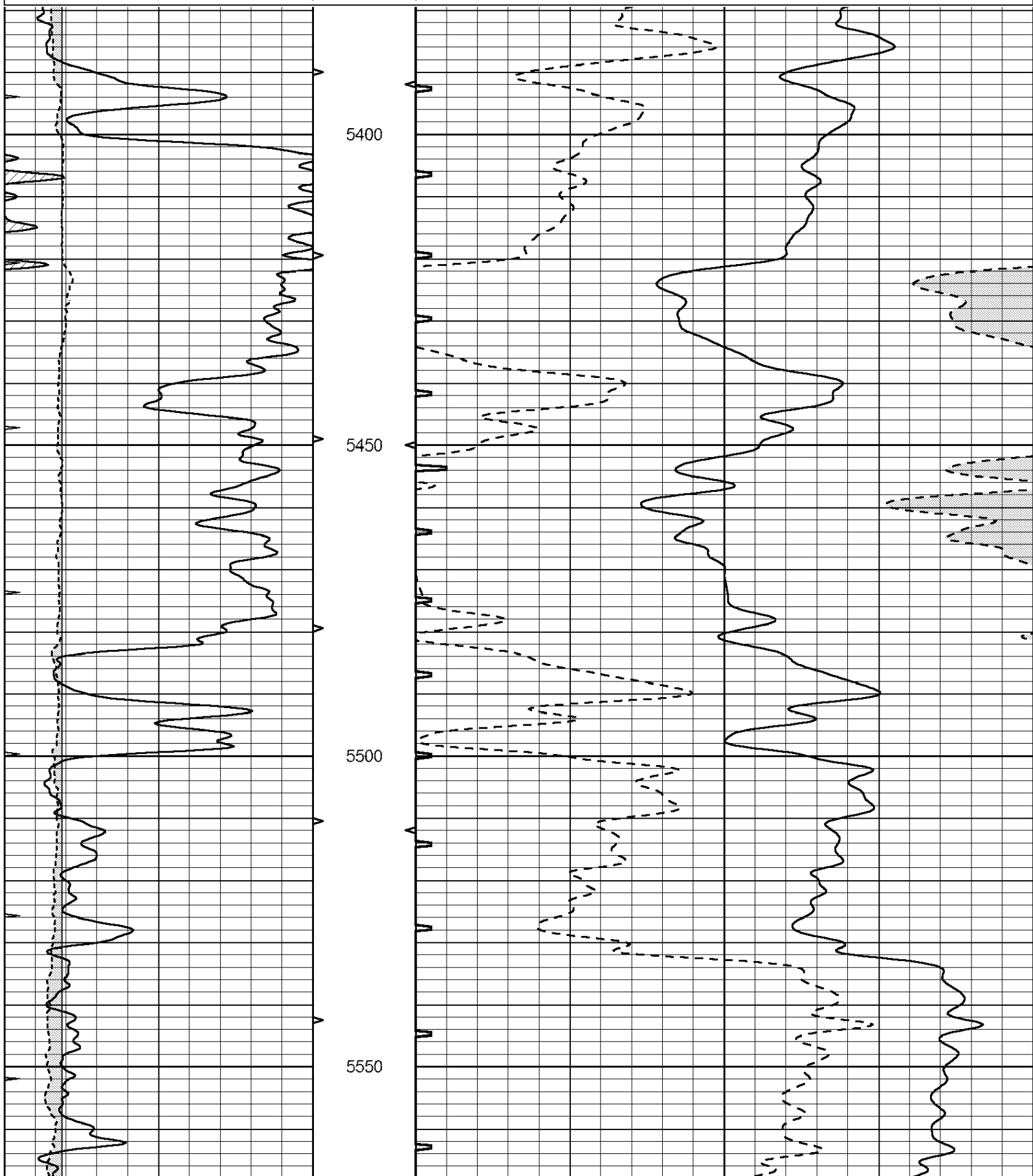
5400

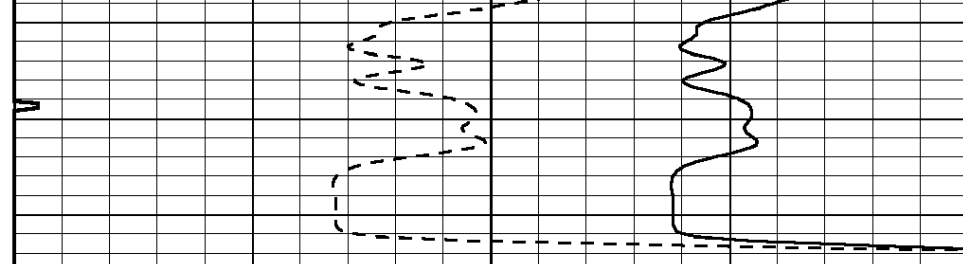
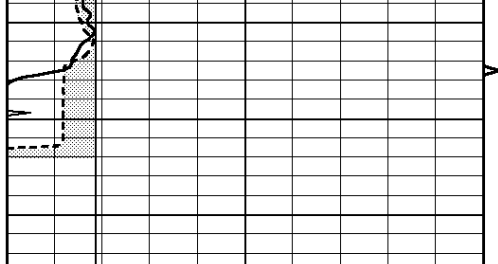




REPEAT SECTION

0	GAMMA RAY (GAPI)	150	ABHV	140	DELTA TIME (usec/ft)	40
6	CALIPER (in)	16	10 (ft3)	0 30	SONIC POROSITY (pu)	-10
0	MINMK	20	TBHV	0	ITT (msec)	20
			0 (ft3)	10		





0	GAMMA RAY (GAPI)	150	ABHV	140	DELTA TIME (usec/ft)	40
6	CALIPER (in)	16	10 (ft3) 0	30	SONIC POROSITY (pu)	-10
0	MINMK	20	TBHV	0	ITT (msec)	20
			0 (ft3) 10			