



**COMPLETION
& PRODUCTION
SERVICES CO.**

**MICRO
LOG**

Company LOTUS OPERATING COMPANY, LLC.
Well MOLZ "L" #8
Field STRANATHAN
County BARBER
State KANSAS

Company LOTUS OPERATING COMPANY, LLC.
Well MOLZ "L" #8
Field STRANATHAN
County BARBER State KANSAS

Location: API # : 15-007-24159-0000
660' FNL & 1980' FEL
SEC 1 TWP 35S RGE 12W
Permanent Datum GROUND LEVEL Elevation 1402
Log Measured From KELLY BUSHING 13' A.G.L.
Drilling Measured From KELLY BUSHING
Other Services
CDL/CNL/PE
DIL/SON
Elevation
K.B. 1415
D.F. 1413
G.L. 1402

Date	4/13/14
Run Number	TWO
Depth Driller	5584
Depth Logger	5592
Bottom Logged Interval	5574
Top Log Interval	3700
Casing Driller	10 3/4" @ 293
Casing Logger	293
Bit Size	7 7/8"
Type Fluid in Hole	CHEMICAL MUD
Density / Viscosity	9.4/52
pH / Fluid Loss	10.0/9.2
Source of Sample	FLOWLINE
Rm @ Meas. Temp	1.05 @ 86F
Rmt @ Meas. Temp	0.79 @ 86F
Rmc @ Meas. Temp	1.26 @ 86F
Source of Rmf / Rmc	MEASUREMENT
Rm @ BHT	0.69 @ 130F
Time Circulation Stopped	2 HOURS
Time Logger on Bottom	
Maximum Recorded Temperature	130F
Equipment Number	4010
Location	HAYS, KANSAS
Recorded By	JEFF GRONEWEG
Witnessed By	TIM HELLMAN

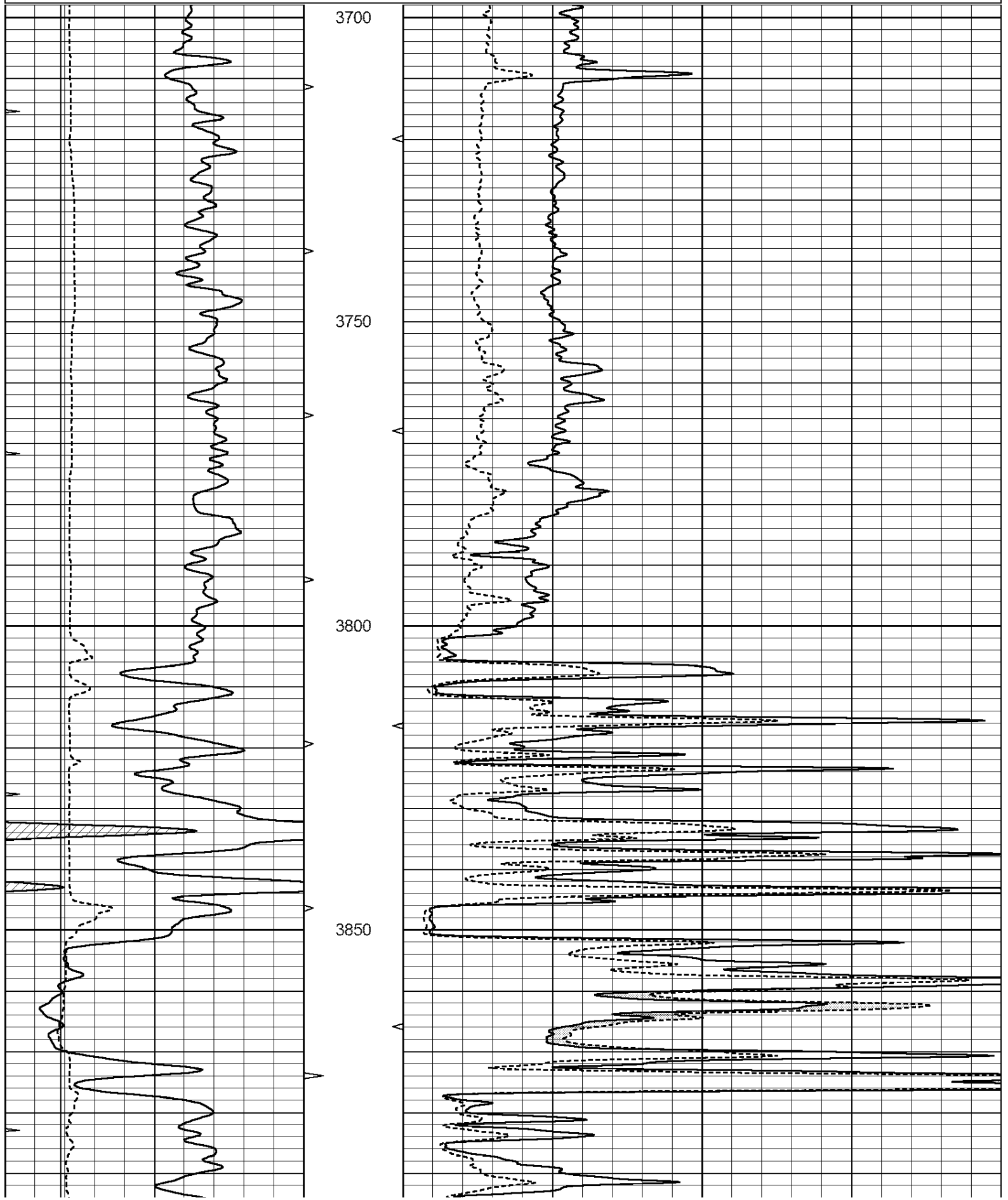
<<< Fold Here >>>

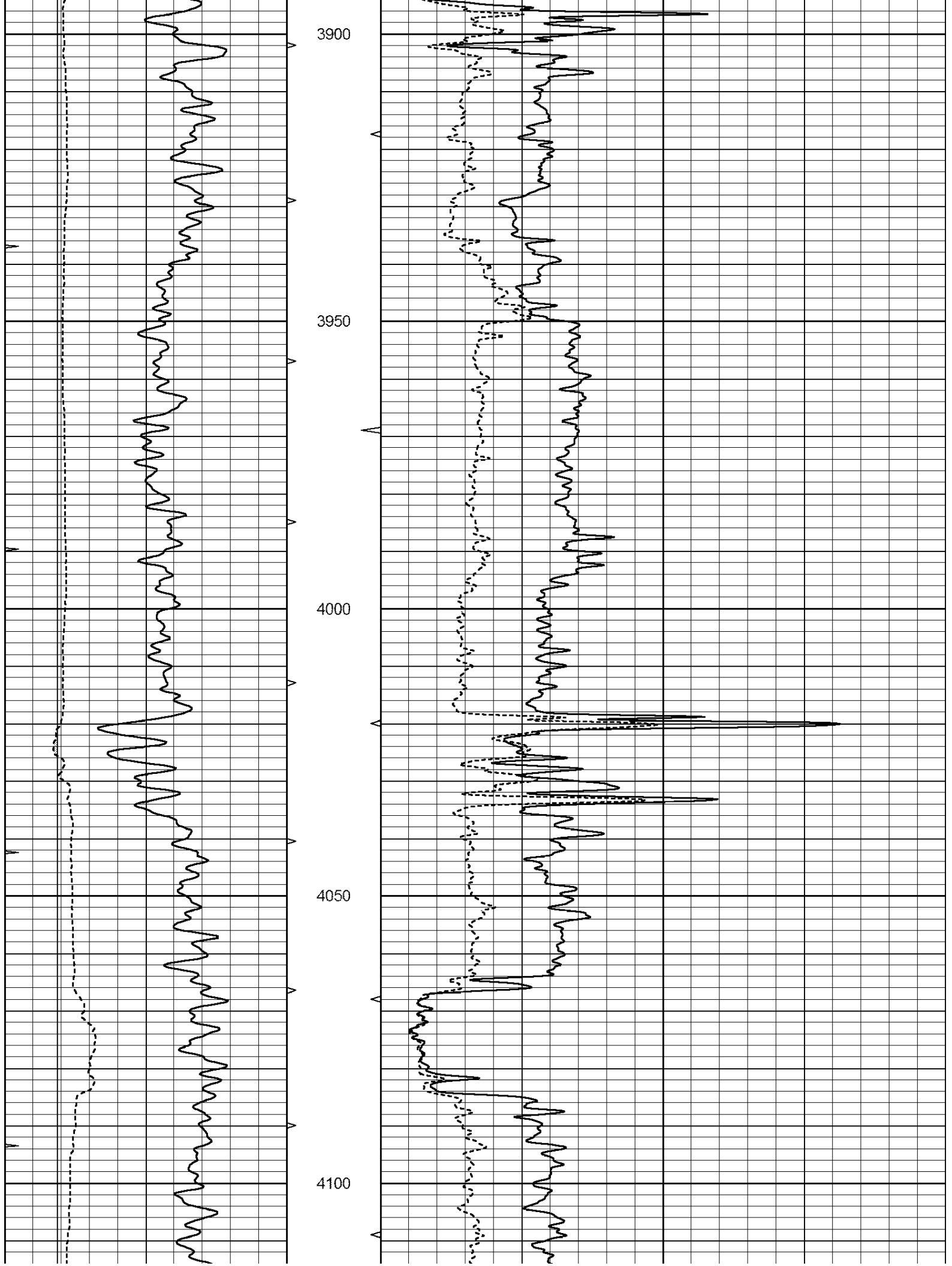
All interpretations are opinions based on inferences from electrical or other measurements and we cannot and do not guarantee the accuracy or correctness of any interpretation, and we shall not, except in the case of gross or willful negligence on our part, be liable or responsible for any loss, costs, damages, or expenses incurred or sustained by anyone resulting from any interpretation made by any of our officers, agents or employees. These interpretations are also subject to our general terms and conditions set out in our current Price Schedule.

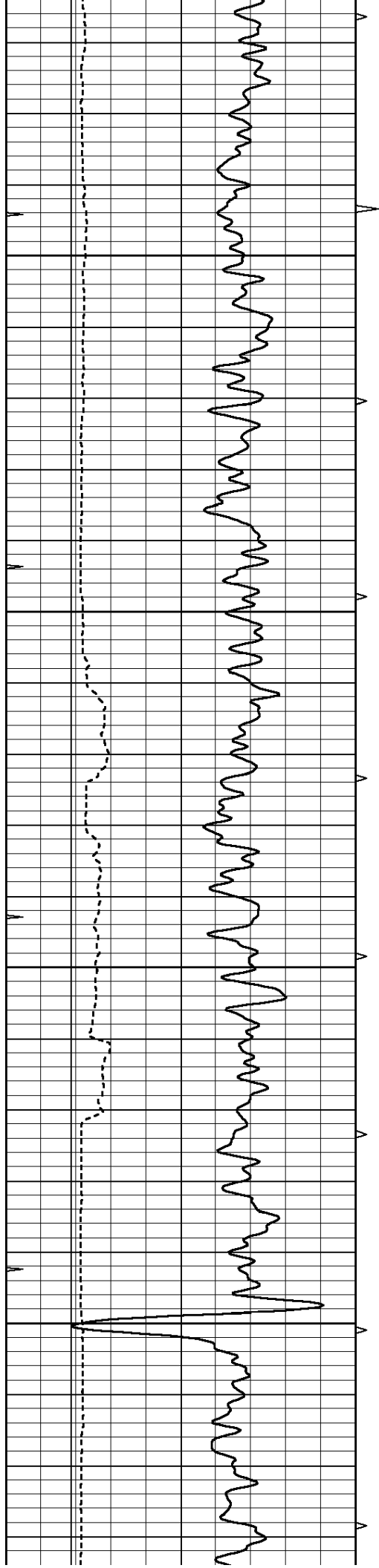
Comments

THANK YOU FOR USING NABORS, HAYS, KS. (785) 628-6395
DIRECTIONS:
MEDICINE LODGE SOUTH TO INTERSECTION OF HWYS 281 & 14
1/2 MILE NORTH - WEST IN TO FARMHOUSE - SOUTH INTO

0	GAMMA RAY (GAPI)	150	ABHV	0	MEL1.5 (Ohm-m)	40
6	CALIPER (in)	16	10 (ft3)	0	MEL2.0 (Ohm-m)	40
0	MINMK	20	TBHV			
			0 (ft3)	10		





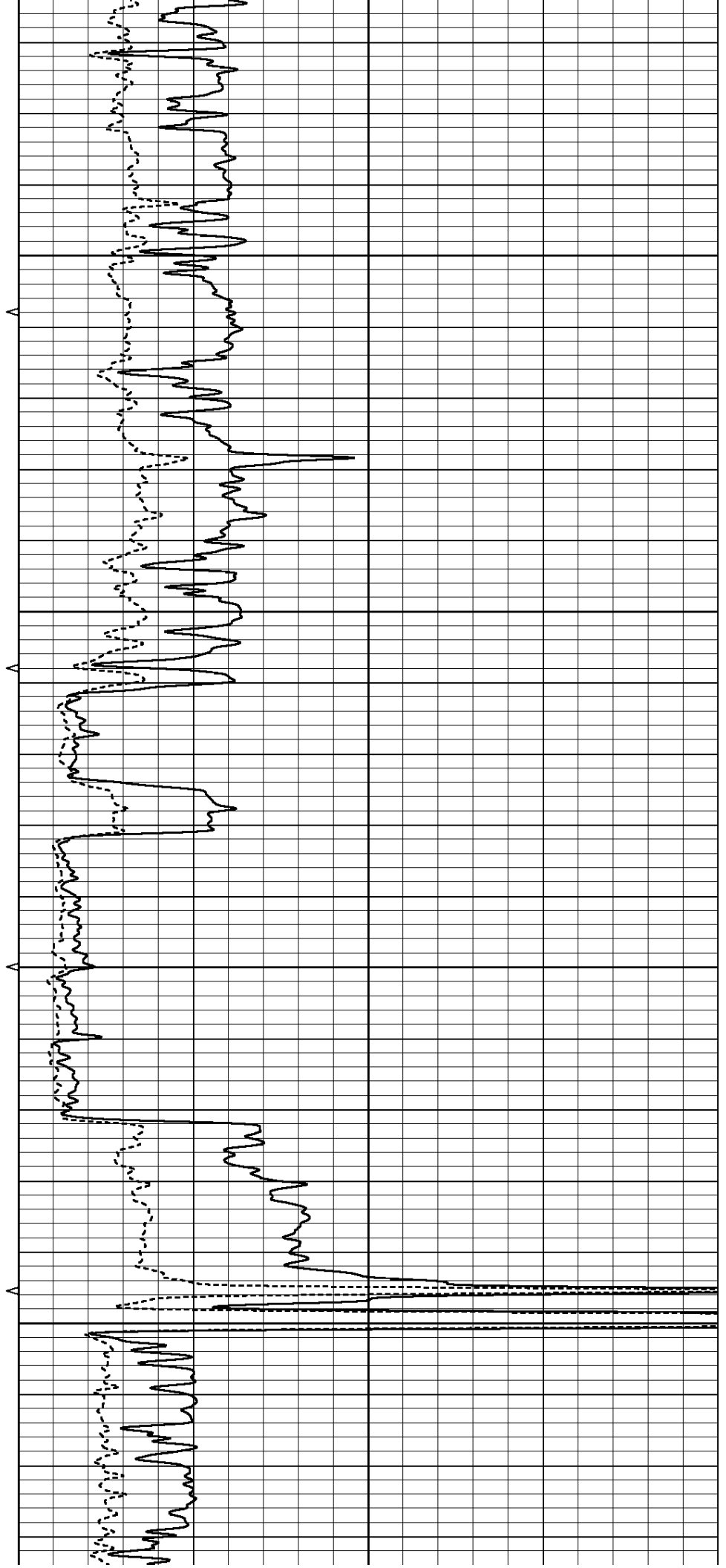


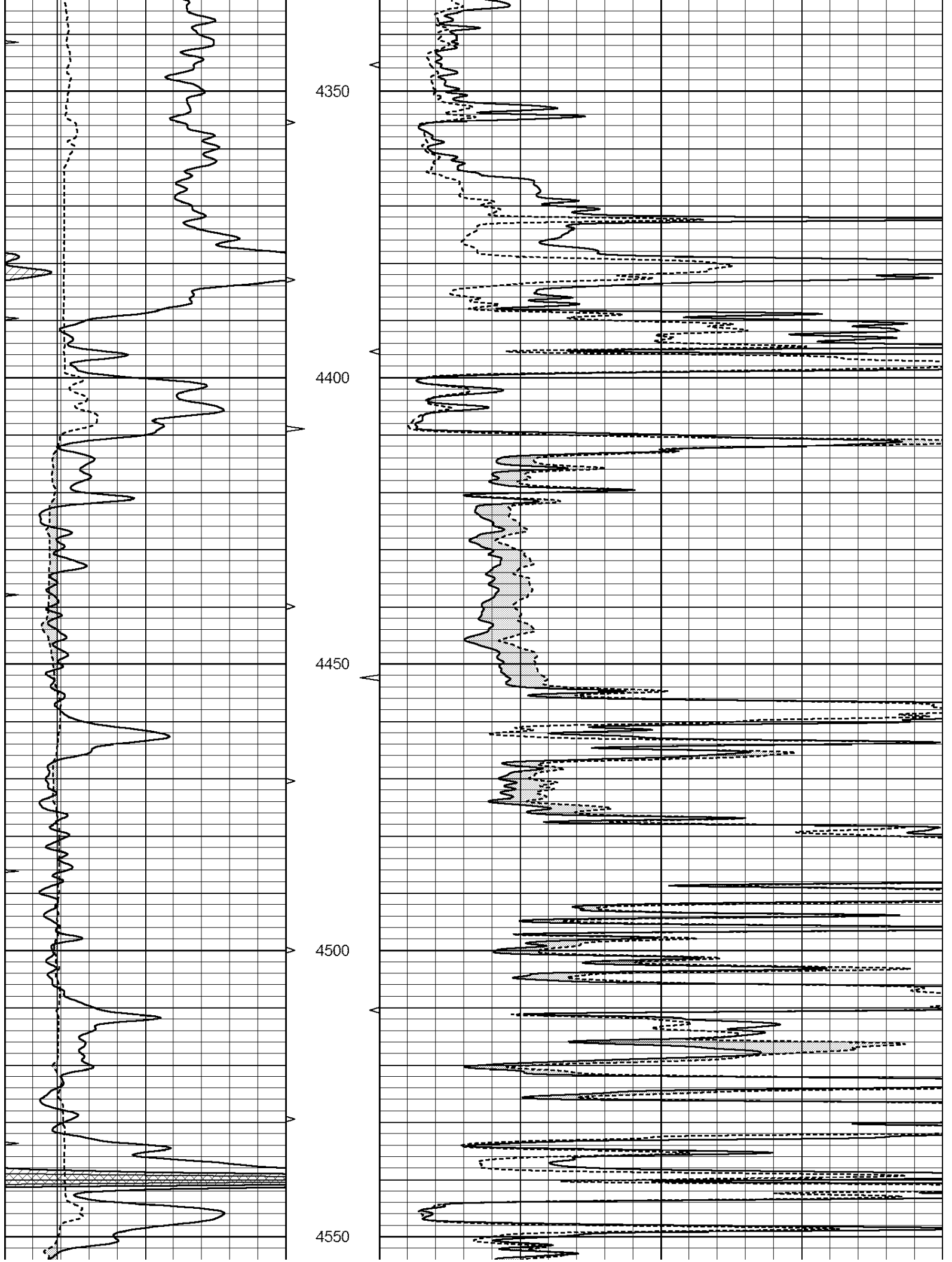
4150

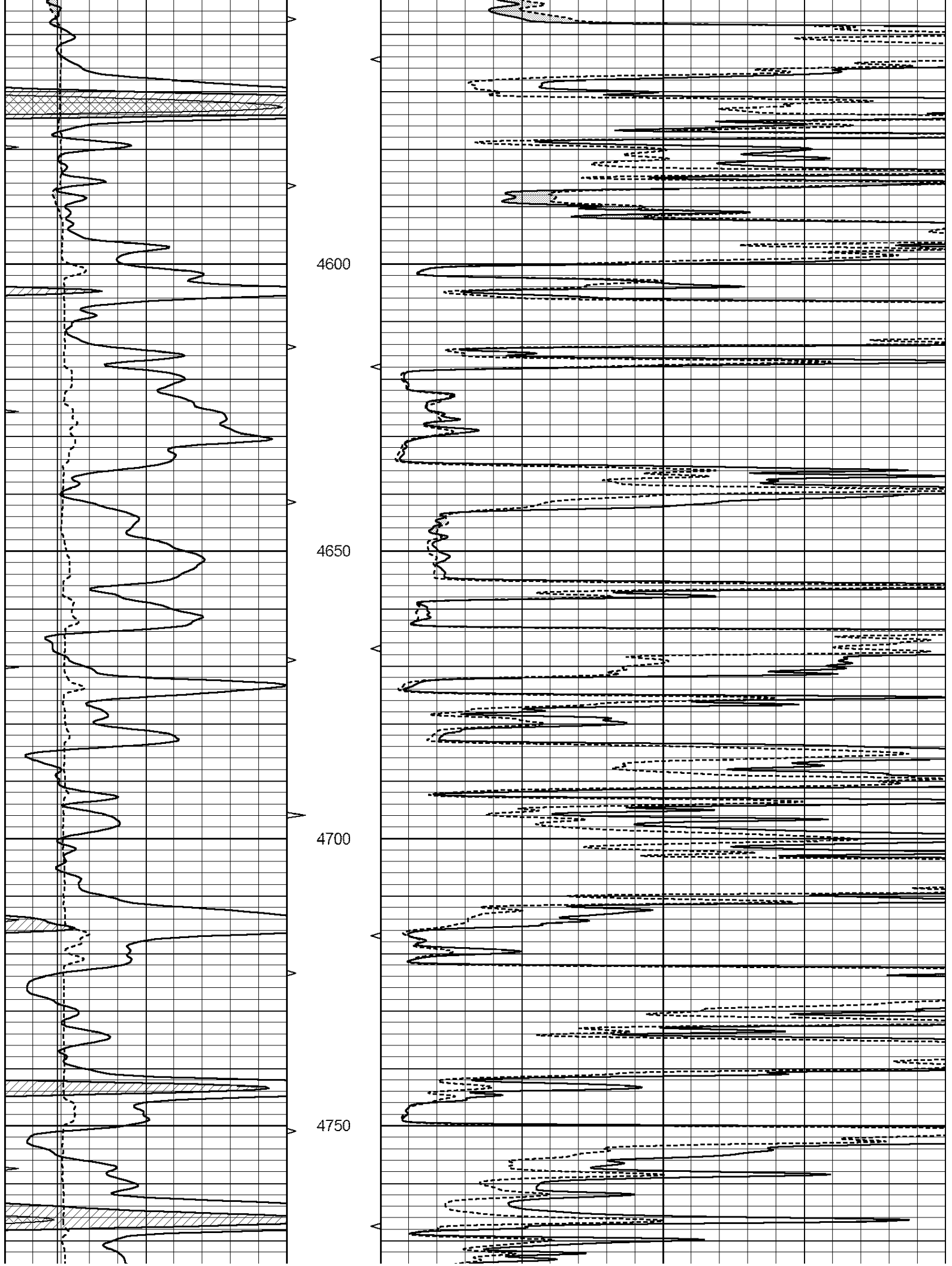
4200

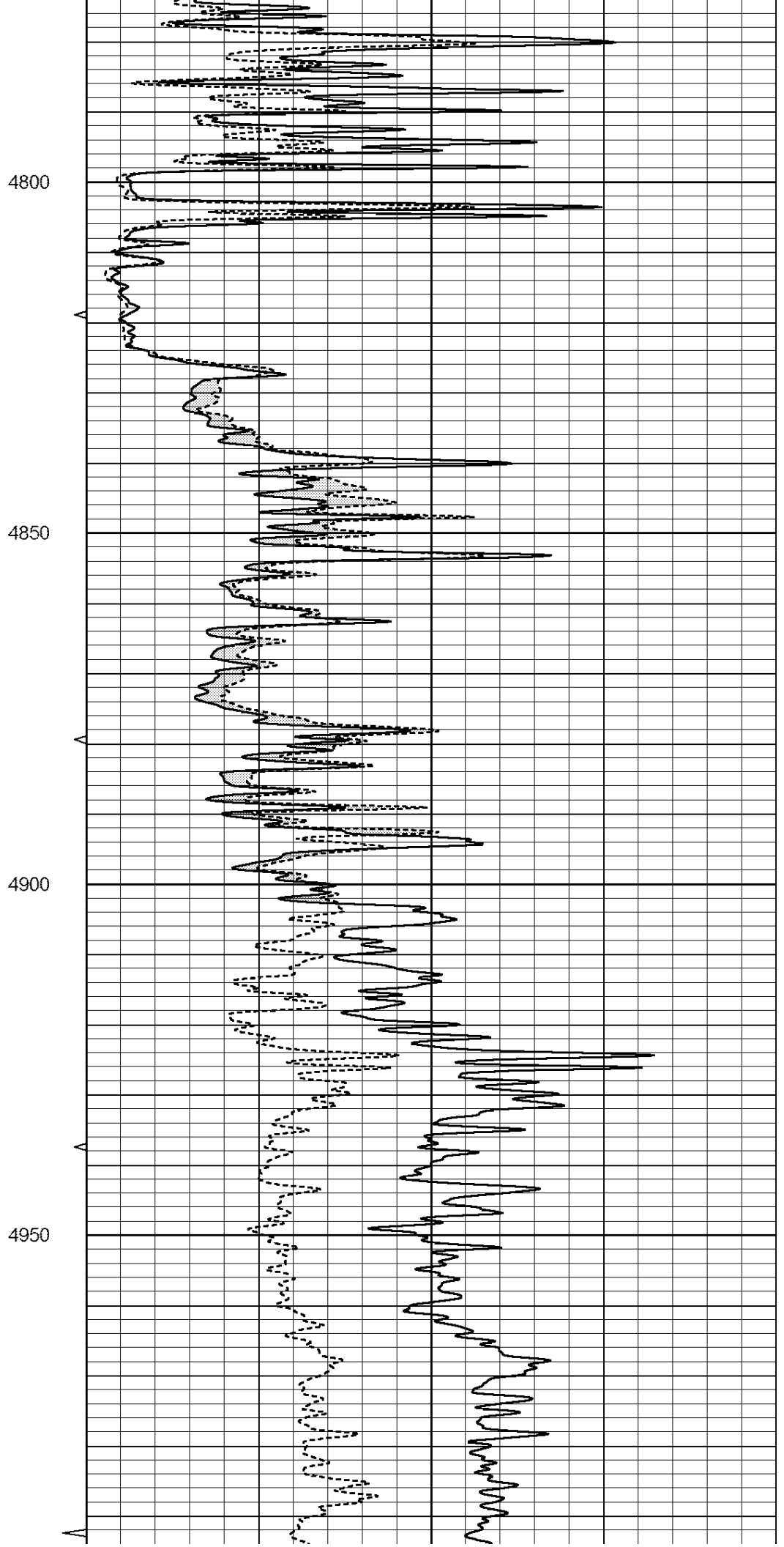
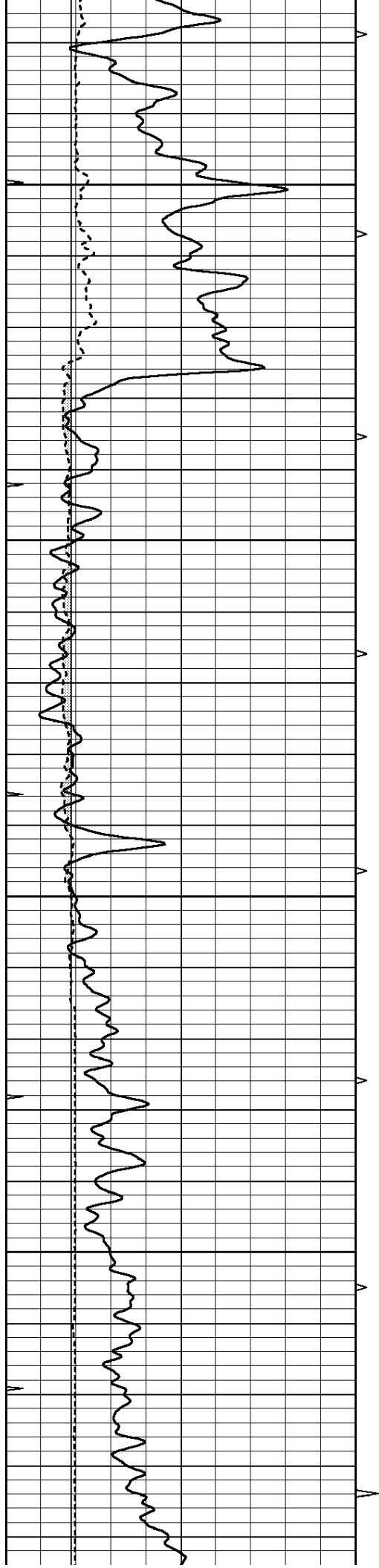
4250

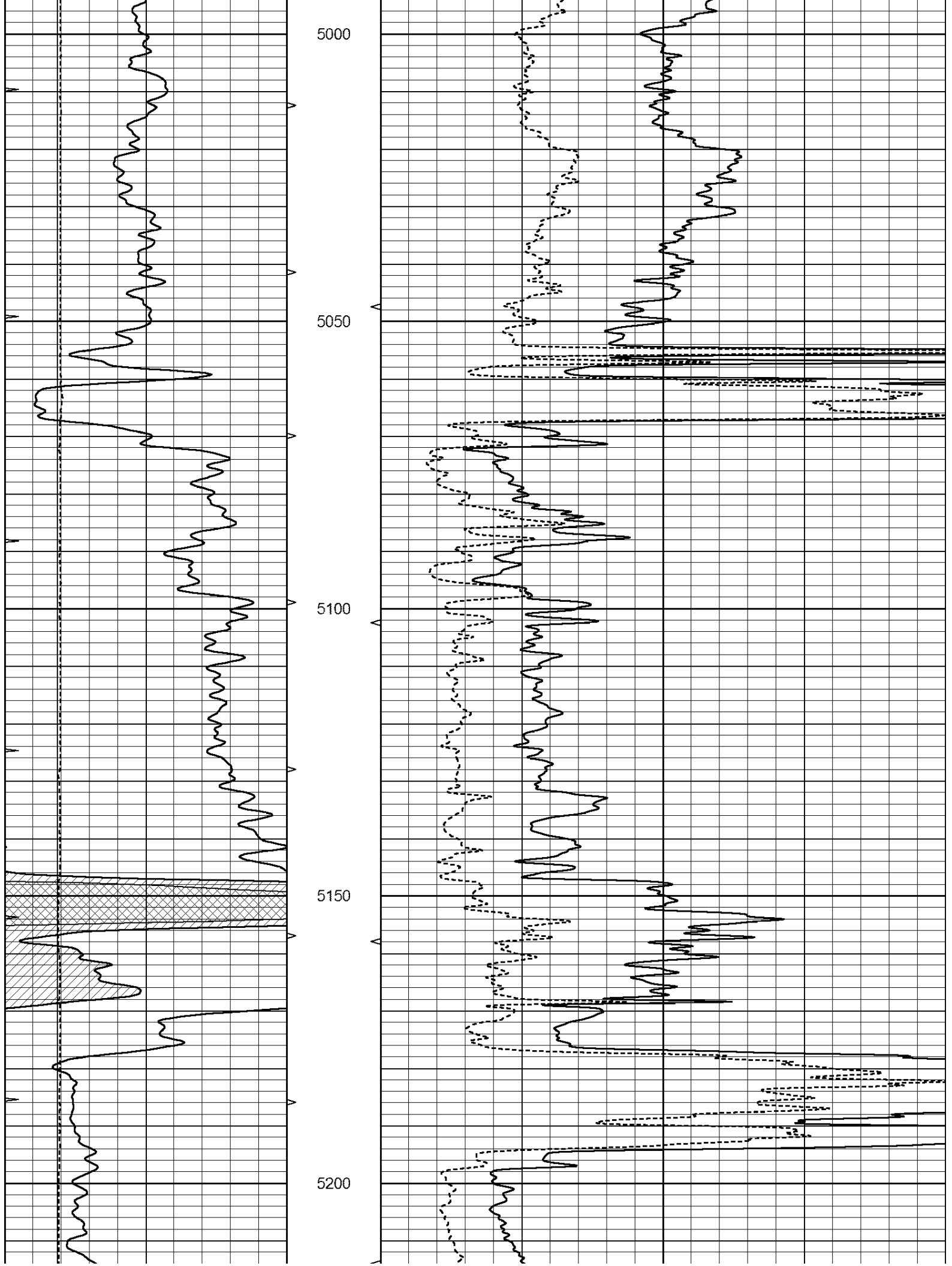
4300

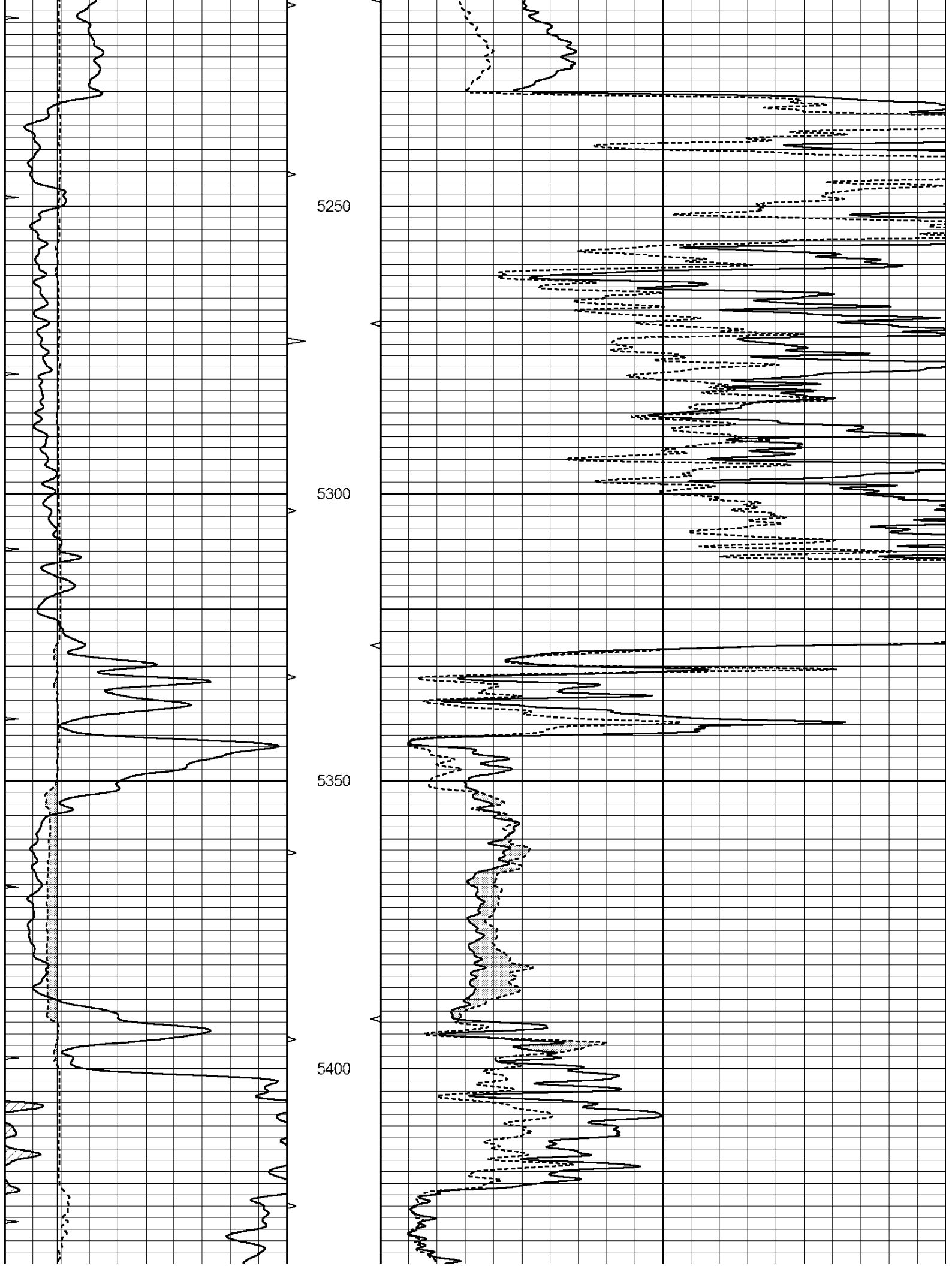


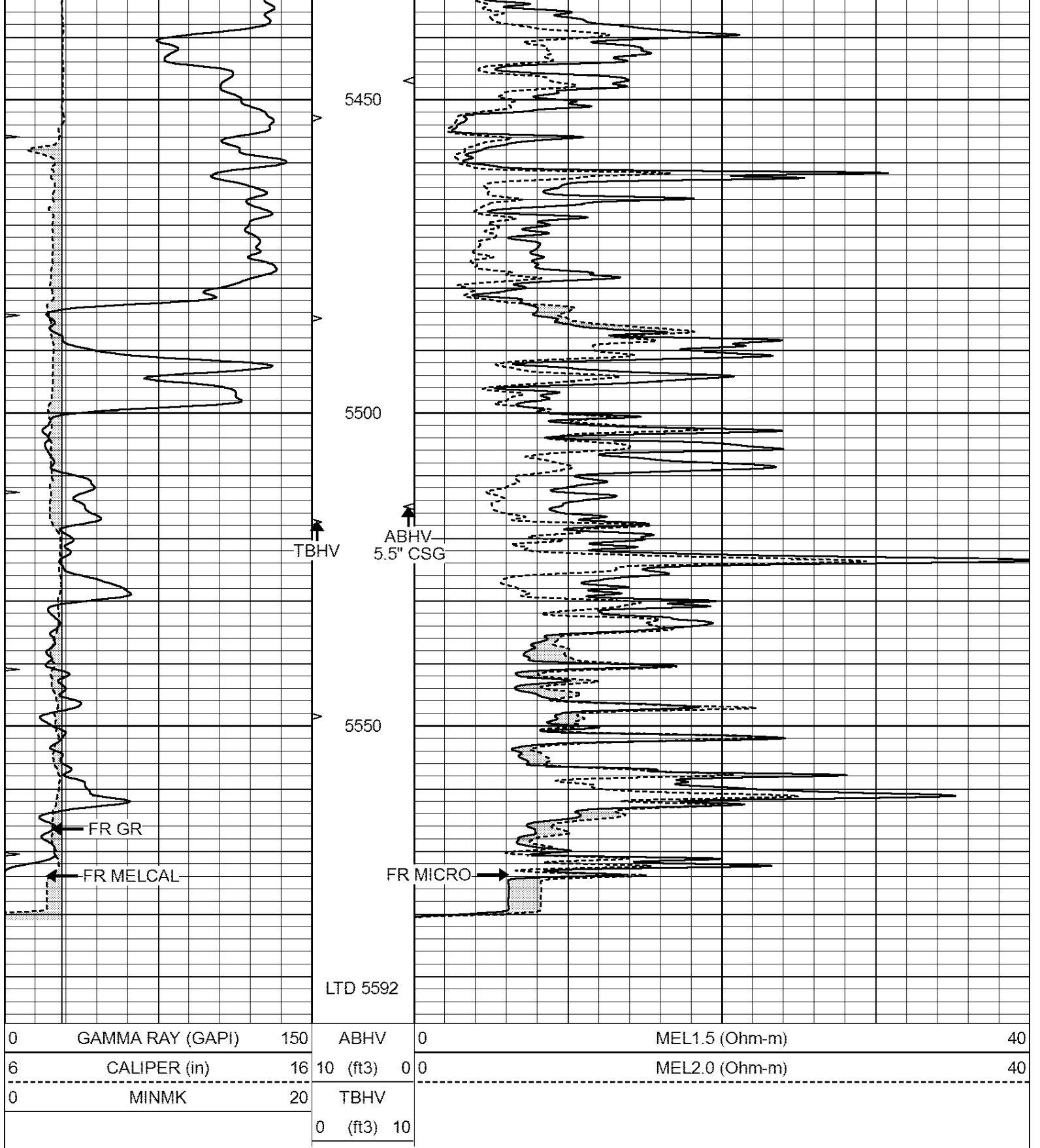








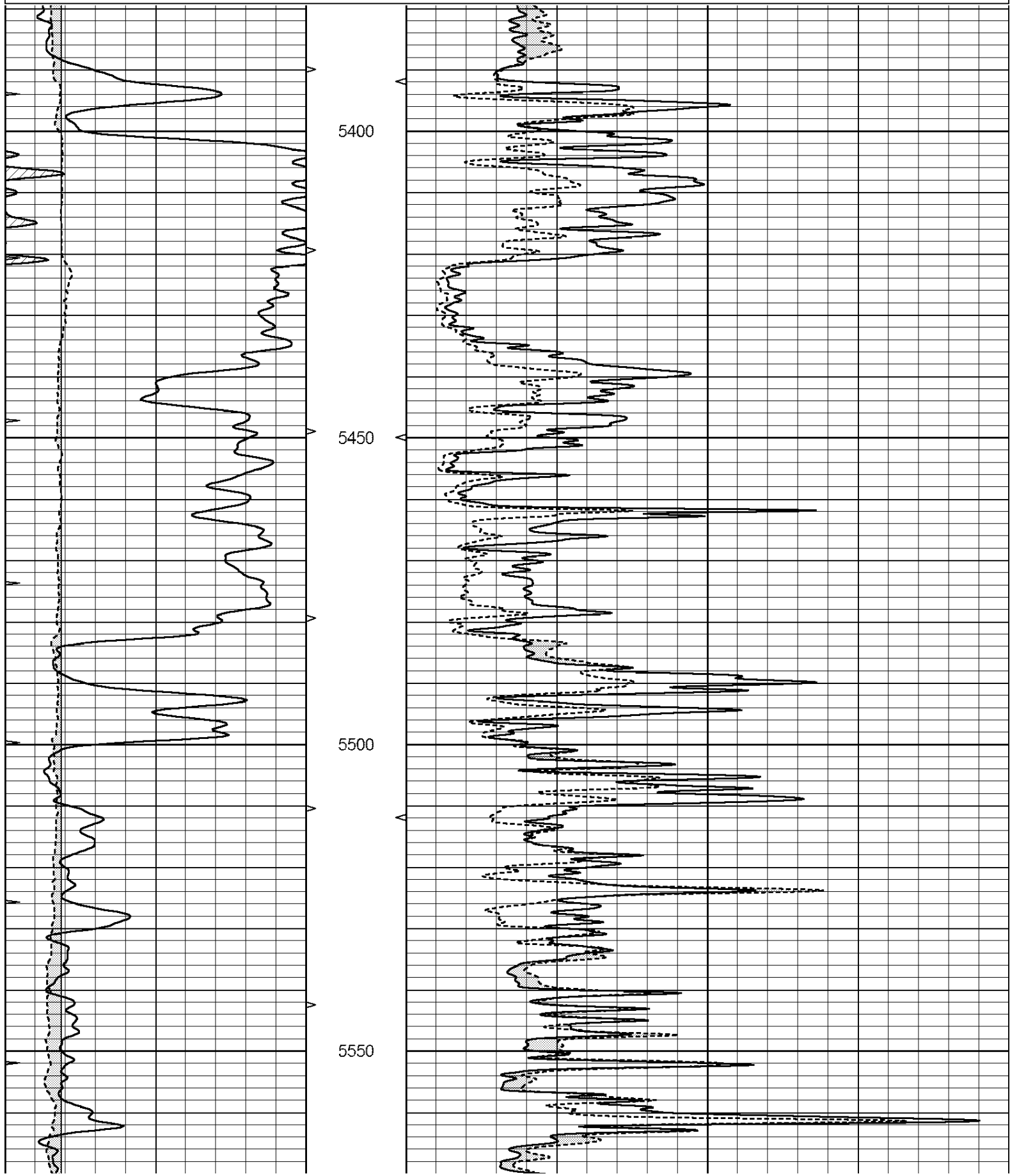


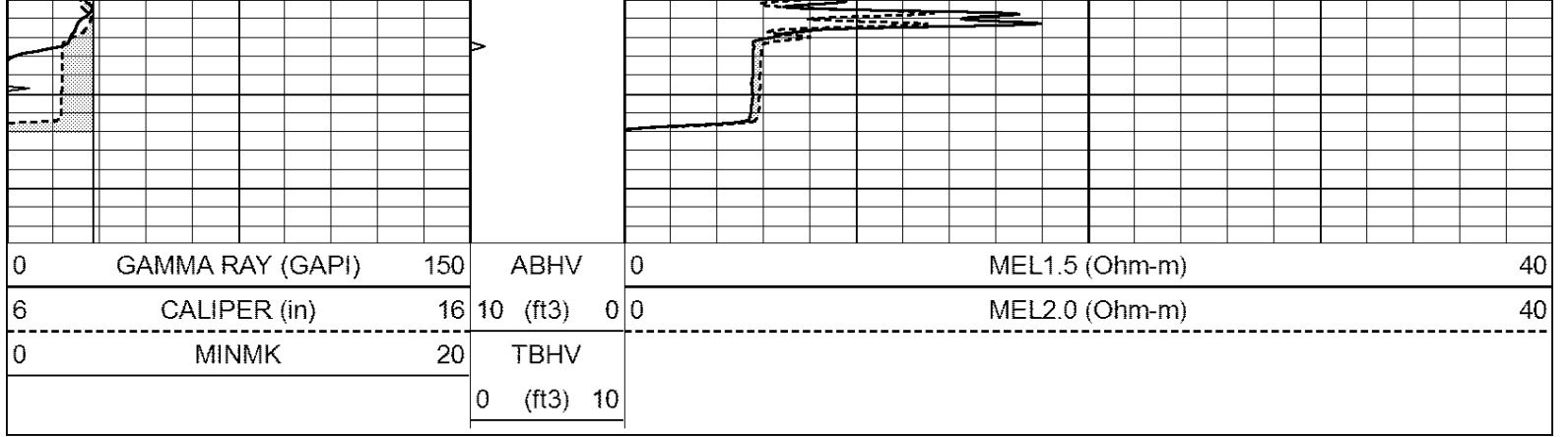


REPEAT SECTION

Database File: 24024pe.db
 Dataset Pathname: pass5
 Presentation Format: micro

0	GAMMA RAY (GAPI)	150	ABHV	0	MEL1.5 (Ohm-m)	40
6	CALIPER (in)	16	10 (ft3)	0	MEL2.0 (Ohm-m)	40
0	MINMK	20	TBHV			
			0 (ft3)	10		





Calibration Report

Database File: 24024pe.db
 Dataset Pathname: pass6.1
 Dataset Creation: Sun Apr 13 21:14:02 2014 by Calc Open-Cased 090629

MICRO Calibration Report

Serial Number:	MICRO6	
Tool Model:	PROBE	
Performed:	Fri Mar 14 21:54:54 2014	
Caliper Calibration:	Gain=5.542	Offset=-0.820
References	Low Cal	High Cal
Readings	8.000	14.000
	1.431	2.513
1.5" Calibration:	Gain=38.075	Offset=-0.250
References	Low Cal	High Cal
Readings	0.000	20.000
	0.004	1.196
2" Calibration:	Gain=44.000	Offset=-0.600
References	Low Cal	High Cal
Readings	0.000	20.000
	0.006	0.913

Gamma Ray Calibration Report

Serial Number:	GR6	
Tool Model:	OPEN	
Performed:	Fri Nov 29 08:34:37 2013	
Calibrator Value:	150.0	GAPI
Background Reading:	0.0	cps
Calibrator Reading:	276.0	cps
Sensitivity:	0.6035	GAPI/cps