



**COMPLETION  
& PRODUCTION  
SERVICES CO.**

**COMPENSATED  
DENSITY/NEUTRON  
PE LOG**

Company LOTUS OPERATING COMPANY, LLC.  
Well MOLZ "L" #8  
Field STRANATHAN  
County BARBER  
State KANSAS

Company LOTUS OPERATING COMPANY, LLC.  
Well MOLZ "L" #8  
Field STRANATHAN  
County BARBER State KANSAS

Location: API # : 15-007-24159-0000  
660' FNL & 1980' FEL  
Permanent Datum GROUND LEVEL Elevation 1402  
Log Measured From KELLY BUSHING 13' A.G.L.  
Drilling Measured From KELLY BUSHING  
SEC 1 TWP 35S RGE 12W  
Other Services  
DIL/MEL  
SON/FRAC  
Elevation  
K.B. 1415  
D.F. 1413  
G.L. 1402

Date	4/13/14
Run Number	ONE
Depth Driller	5584
Depth Logger	5592
Bottom Logged Interval	5568
Top Log Interval	3700
Casing Driller	10 3/4" @ 293
Casing Logger	293
Bit Size	7 7/8"
Type Fluid in Hole	CHEMICAL MUD
Density / Viscosity	9.4/52
pH / Fluid Loss	10.0/9.2
Source of Sample	FLOWLINE
Rm @ Meas. Temp	1.05 @ 86F
Rmt @ Meas. Temp	0.79 @ 86F
Rmc @ Meas. Temp	1.26 @ 86F
Source of Rmf / Rmc	MEASUREMENT
Rm @ BHT	0.69 @ 130F
Time Circulation Stopped	2 HOURS
Time Logger on Bottom	
Maximum Recorded Temperature	130F
Equipment Number	4010
Location	HAYS, KANSAS
Recorded By	JEFF GRONEWEG
Witnessed By	TIM HELLMAN

<<< Fold Here >>>

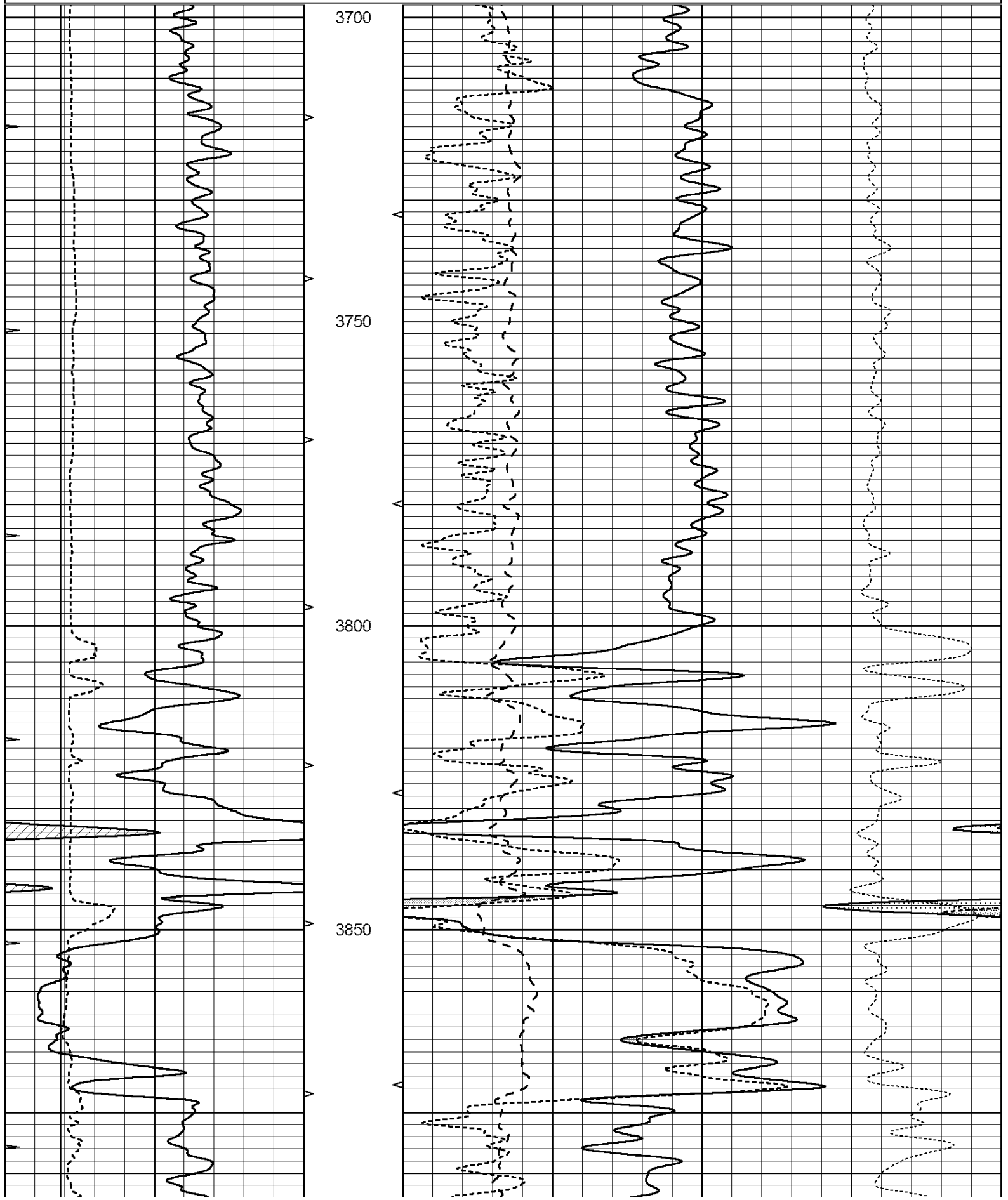
All interpretations are opinions based on inferences from electrical or other measurements and we cannot and do not guarantee the accuracy or correctness of any interpretation, and we shall not, except in the case of gross or willful negligence on our part, be liable or responsible for any loss, costs, damages, or expenses incurred or sustained by anyone resulting from any interpretation made by any of our officers, agents or employees. These interpretations are also subject to our general terms and conditions set out in our current Price Schedule.

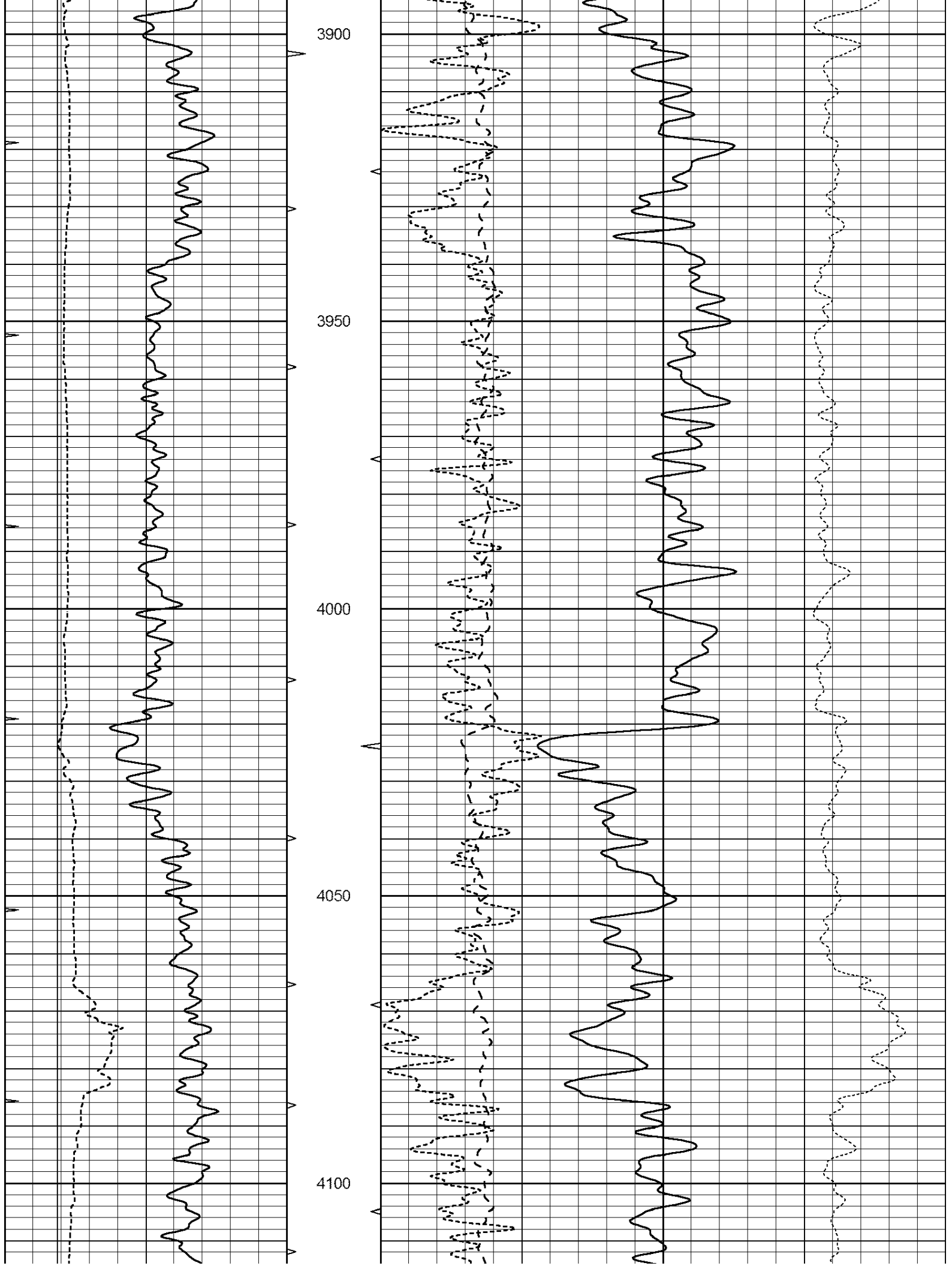
**Comments**

THANK YOU FOR USING NABORS, HAYS, KS. (785) 628-6395  
DIRECTIONS:  
MEDICINE LODGE SOUTH TO INTERSECTION OF HWYS 281 & 14  
1/2 MILE NORTH - WEST IN TO FARMHOUSE - SOUTH INTO

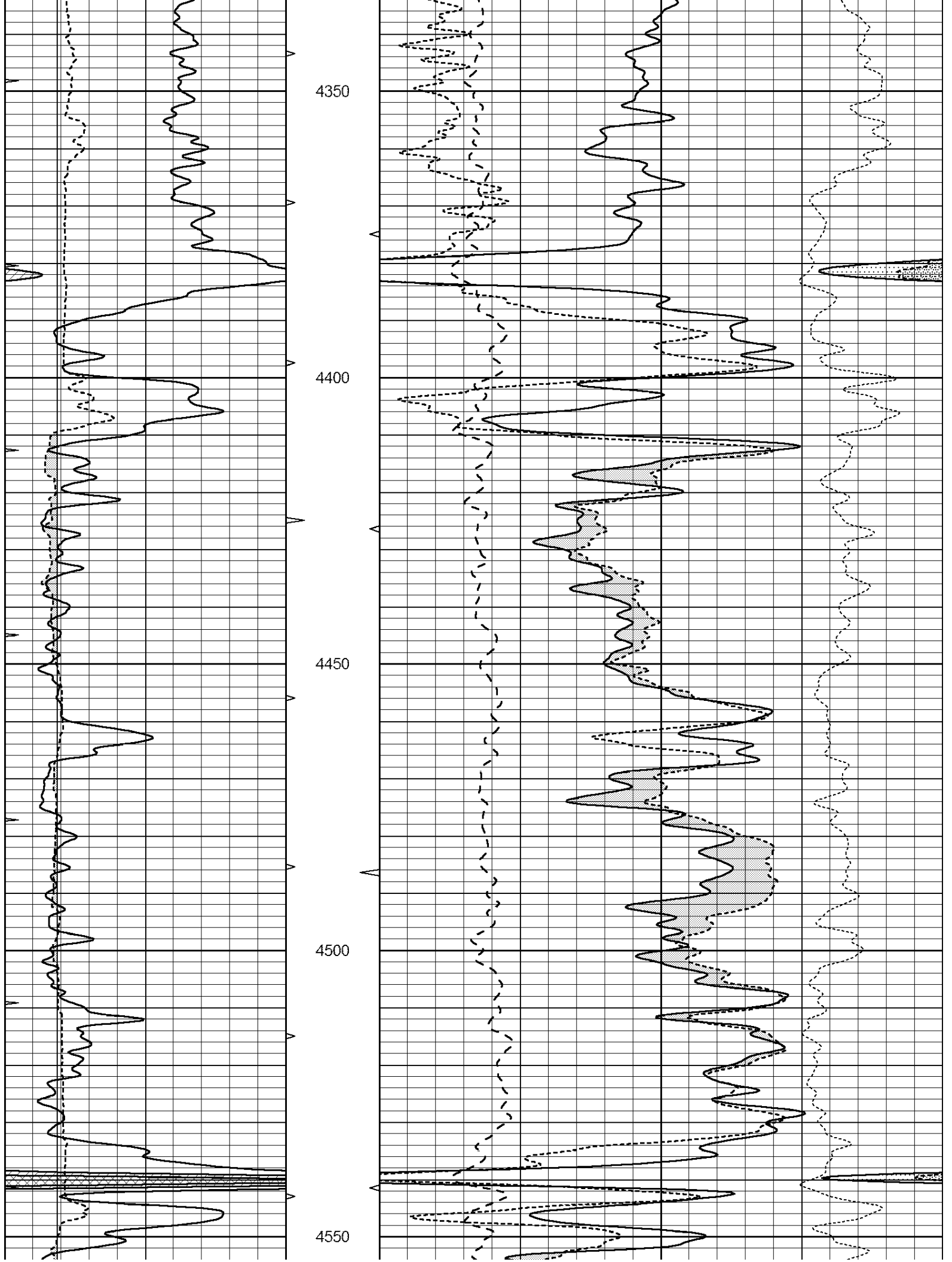
Database File: 24024pe.db  
Dataset Pathname: pass3.2.3  
Presentation Format: \_ldt\_neu  
Dataset Creation: Sun Apr 13 18:34:04 2014 by Calc Open-Cased 090629  
Charted by: Depth in Feet scaled 1:240

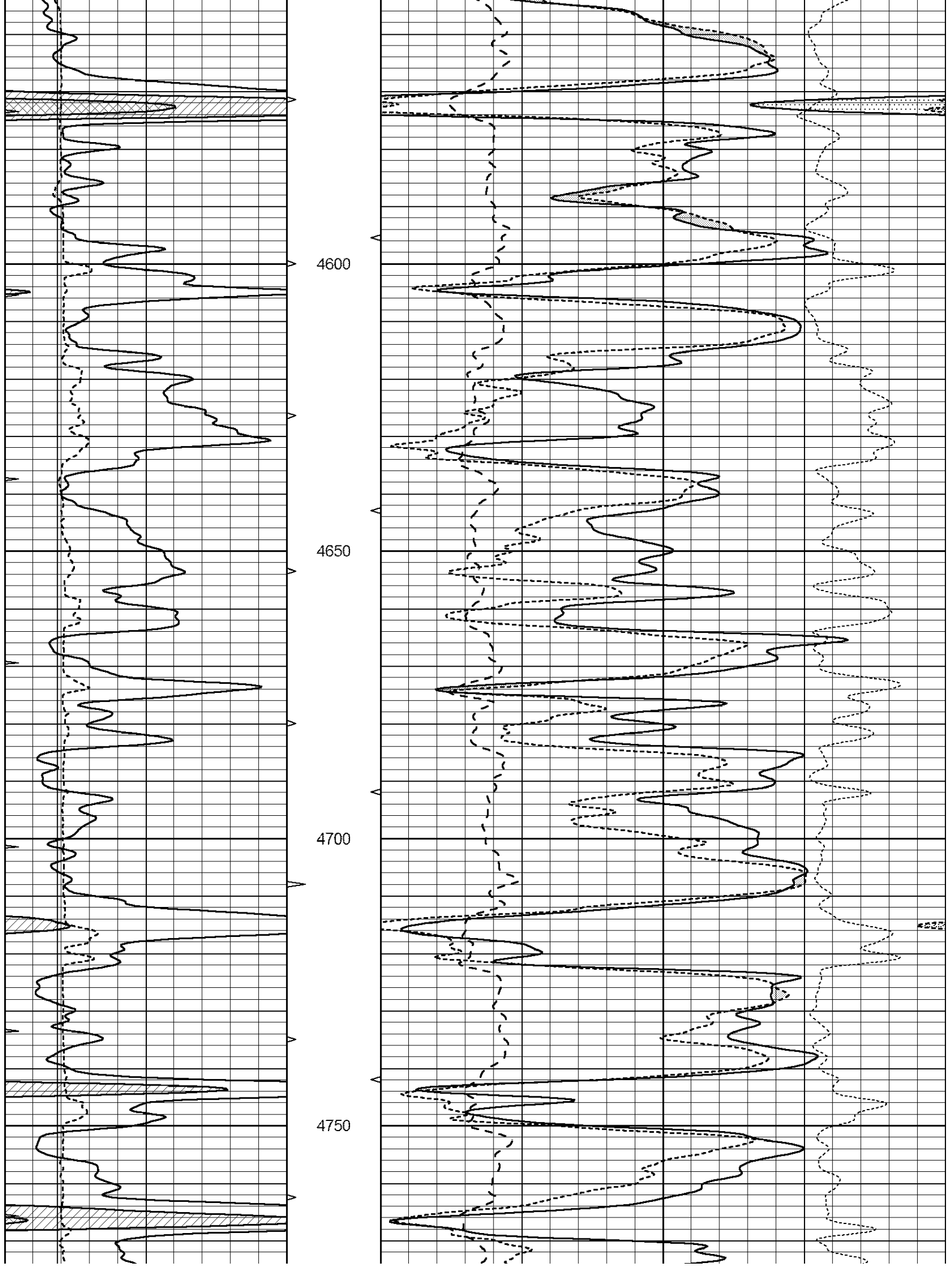
0	GAMMA RAY (GAPI)	150	ABHV	30	COMPENSATED DENSITY (pu)			-10	
6	CALIPER (in)	16	10 (ft3)	0	30	COMPENSATED NEUTRON (pu)			-10
0	MINMK	20	TBHV	0	PE	10	-0.25	CORRECTION (g/cc)	0.25
			0 (ft3)	10					

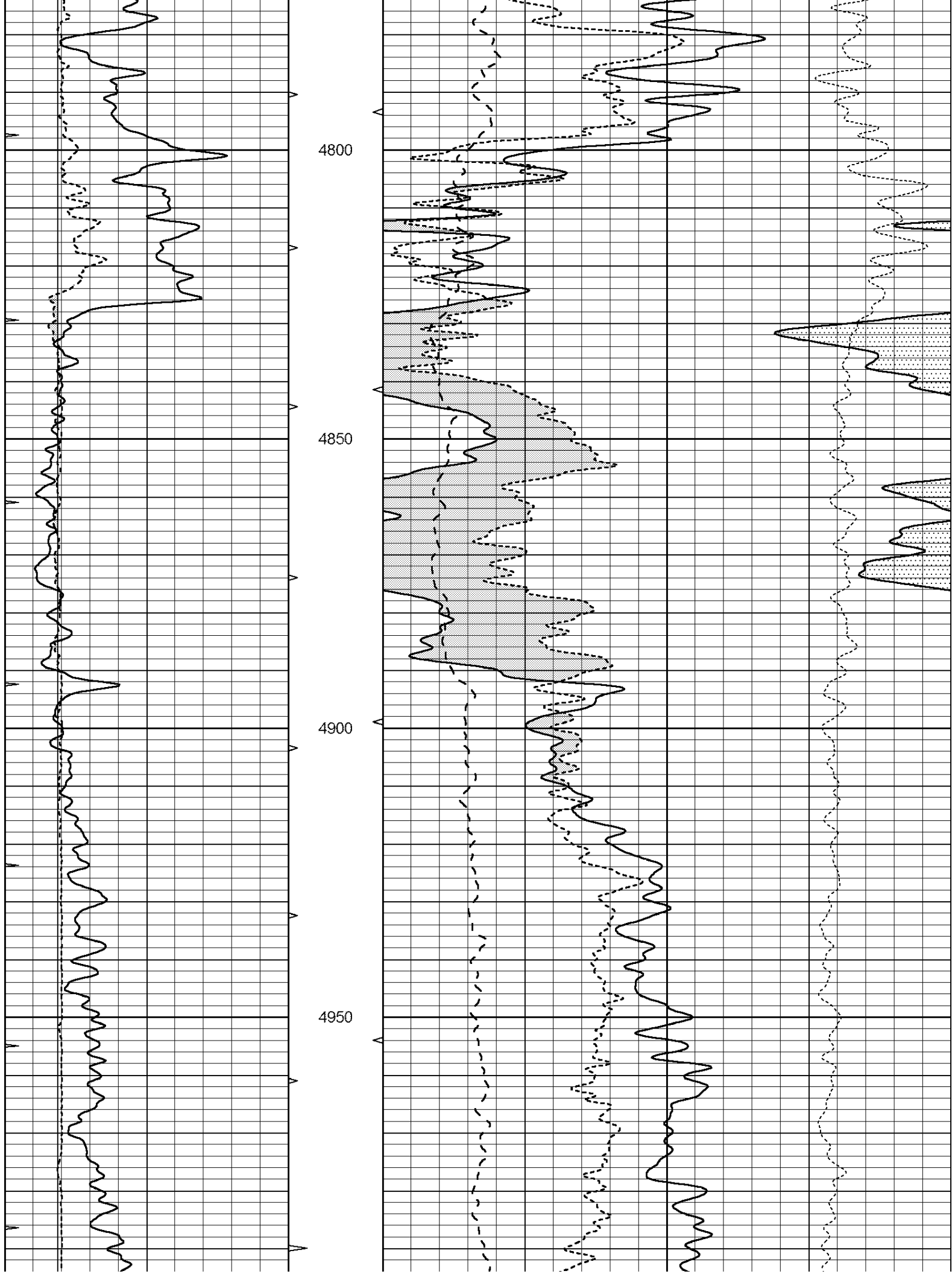


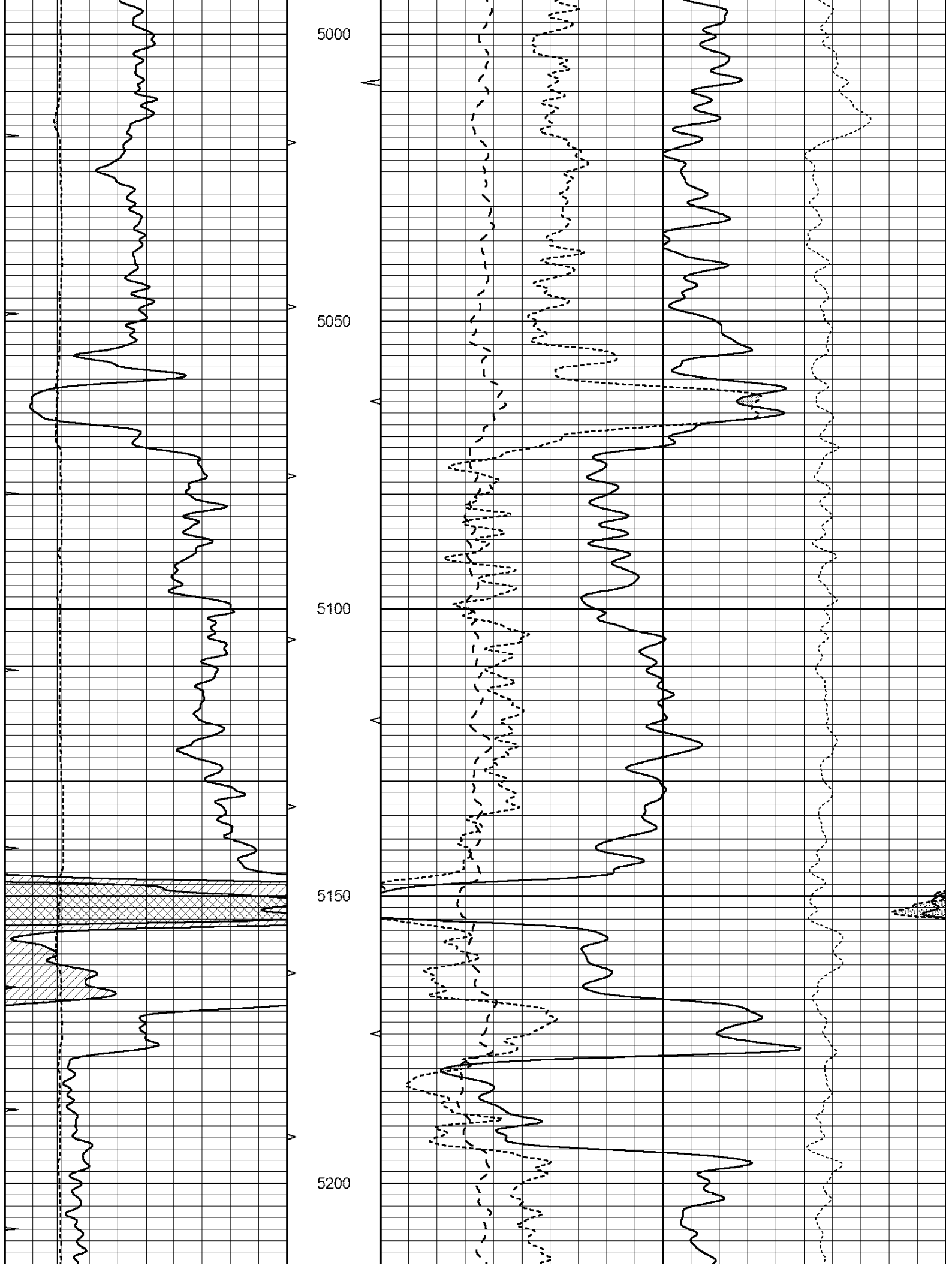


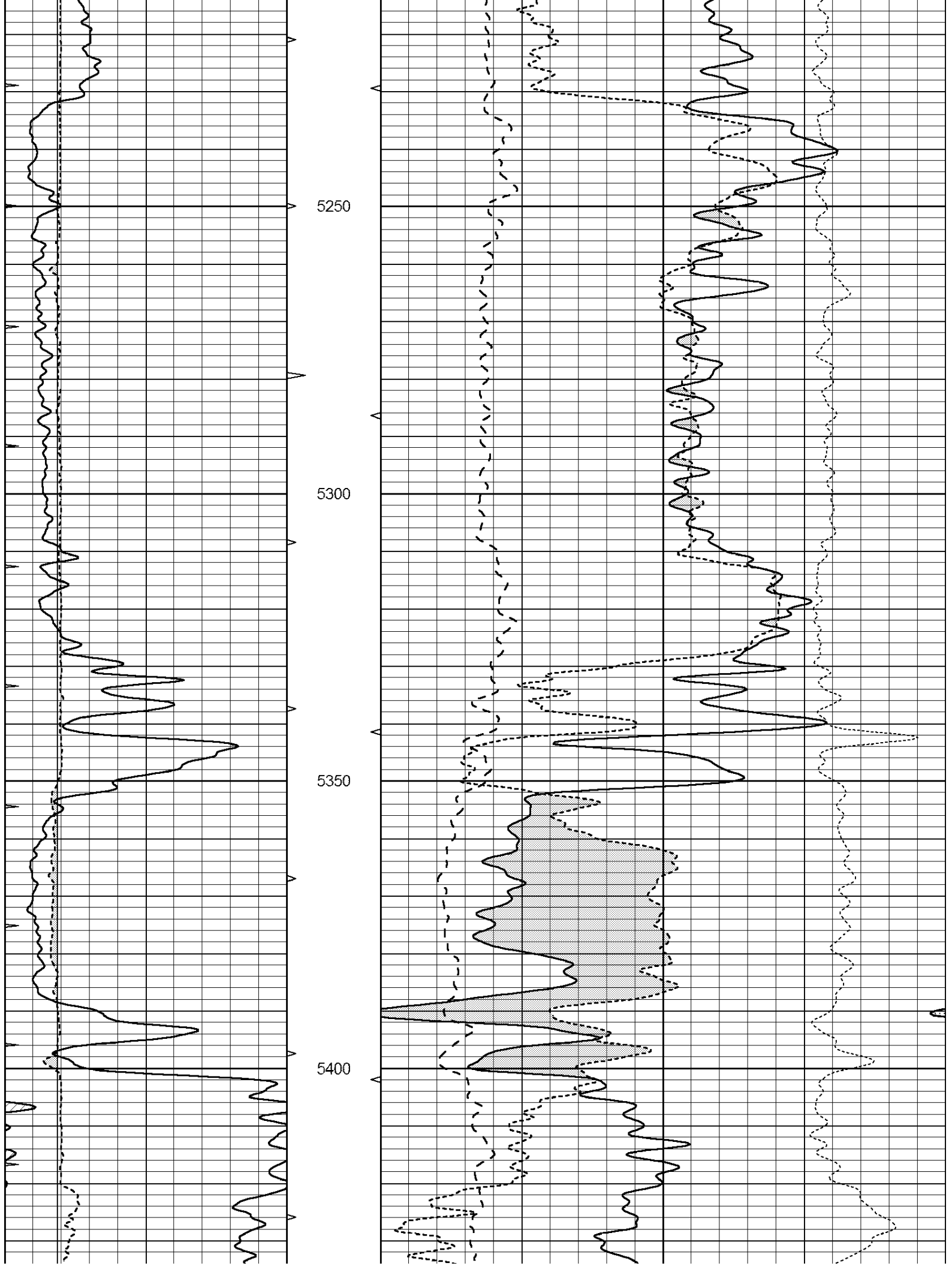


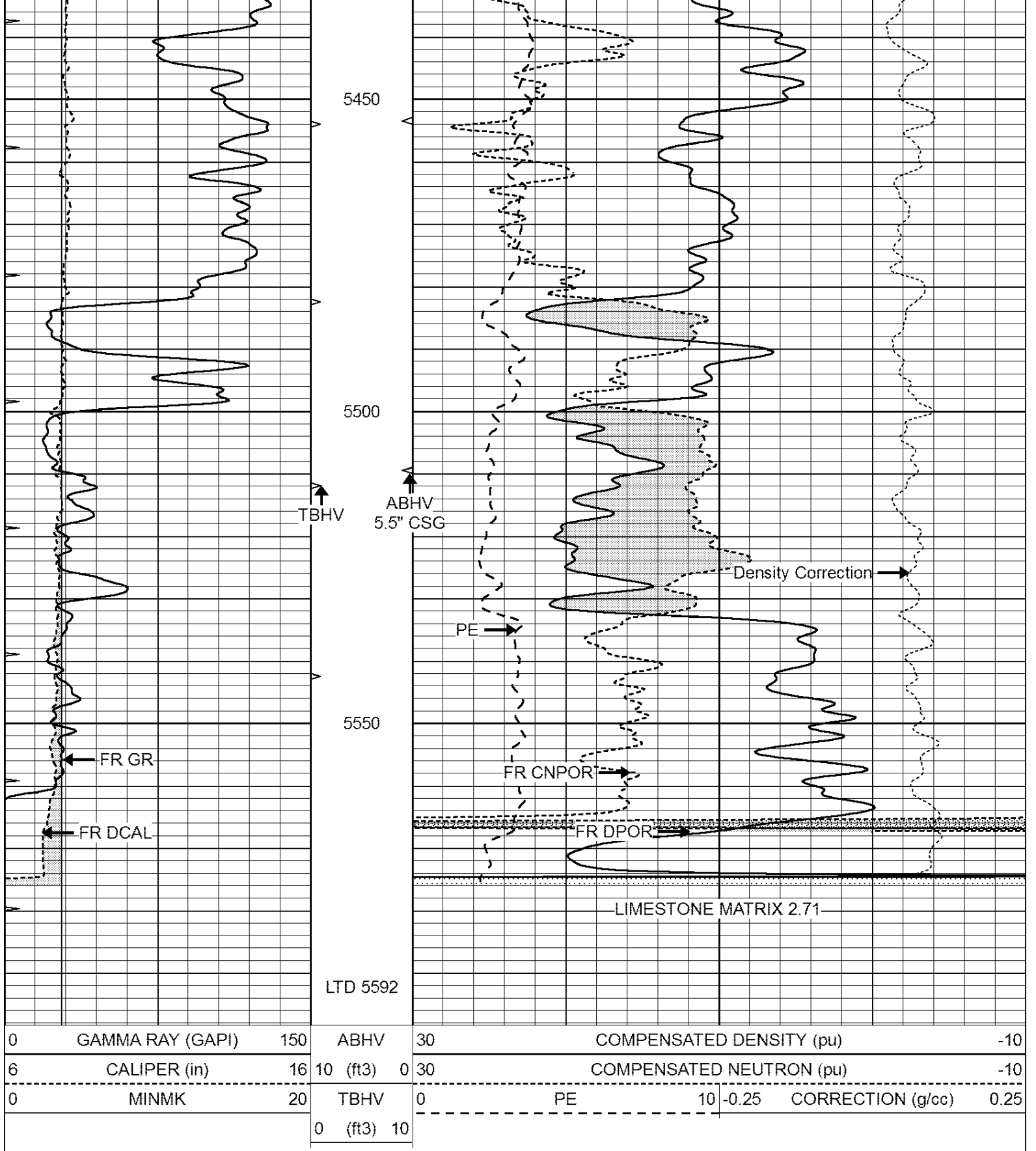






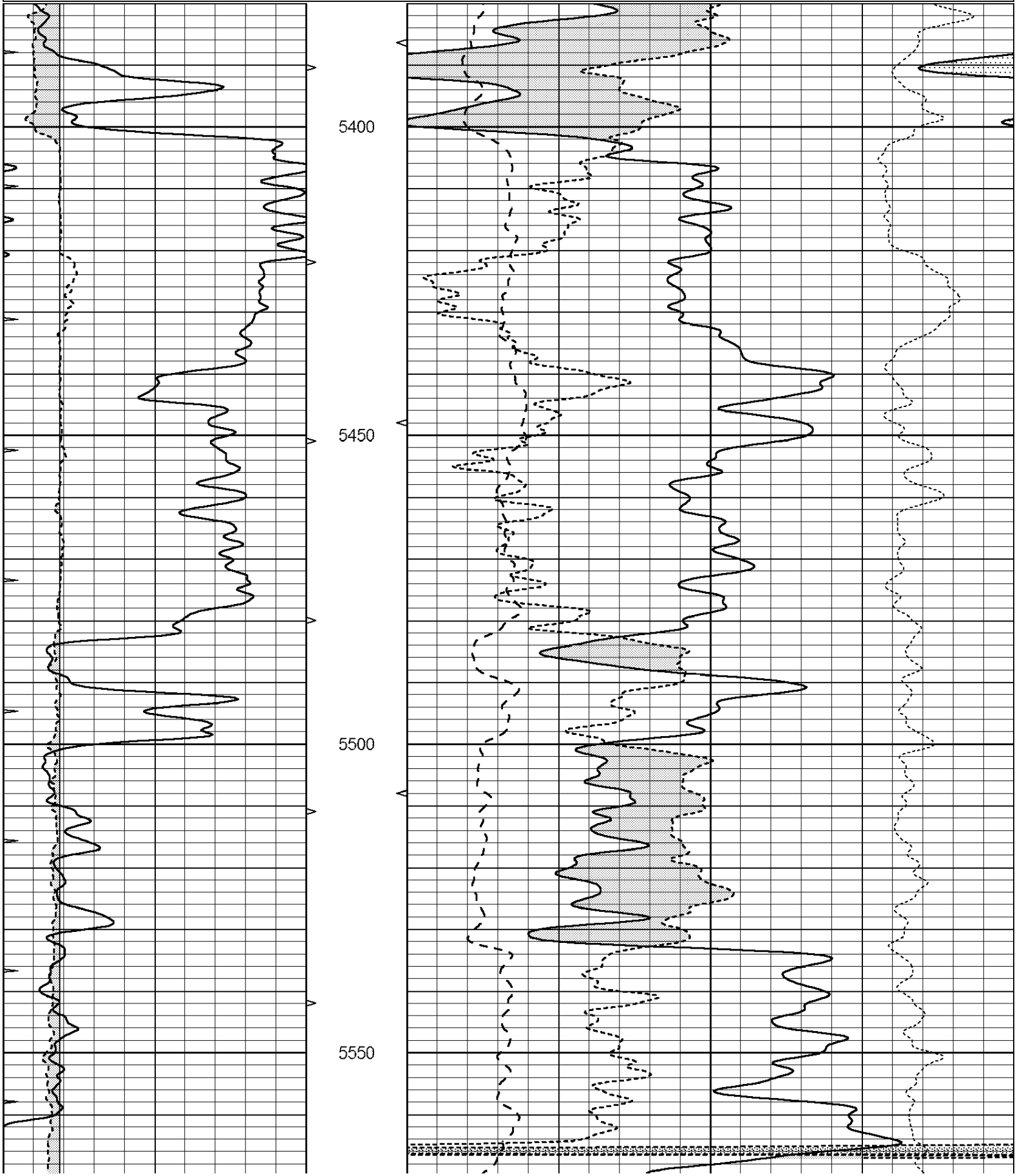






# REPEAT SECTION

0	GAMMA RAY (GAPI)	150	ABHV	30	COMPENSATED DENSITY (pu)		-10		
6	CALIPER (in)	16	10 (ft3)	0	30	COMPENSATED NEUTRON (pu)		-10	
0	MINMK	20	TBHV	0	PE	10	-0.25	CORRECTION (g/cc)	0.25
			0 (ft3)	10					



			5600						
0	GAMMA RAY (GAPI)	150	ABHV	30	COMPENSATED DENSITY (pu)			-10	
6	CALIPER (in)	16	10 (ft3)	0	30	COMPENSATED NEUTRON (pu)			-10
0	MINMK	20	TBHV	0	PE	10	-0.25	CORRECTION (g/cc)	0.25
			0 (ft3)	10					

Calibration Report

Database File: 24024pe.db  
 Dataset Pathname: pass3.2.3  
 Dataset Creation: Sun Apr 13 18:34:04 2014 by Calc Open-Cased 090629

Dual Induction Calibration Report

Serial-Model: PROBE8-DILG  
 Surface Cal Performed: Fri Aug 01 06:33:19 2008  
 Downhole Cal Performed: Mon Jul 28 11:08:27 2008  
 After Survey Verification Performed: Mon Jul 28 11:08:27 2008

Surface Calibration

Loop:	Readings				References			Results	
	Air	Loop			Air	Loop		m	b
Deep	0.015	0.648	V	0.000	400.000	mmho/m	632.616	-9.730	
Medium	0.029	0.796	V	0.000	464.000	mmho/m	605.049	-17.680	
Internal:	Zero	Cal		Zero	Cal		m	b	
Deep	0.017	0.657	V	0.000	400.000	mmho/m	625.153	-10.619	
Medium	0.016	0.757	V	0.000	464.000	mmho/m	625.992	-9.739	

Downhole Calibration

	Readings				References			Results	
	Zero	Cal			Zero	Cal		m'	b'
Deep	0.000	0.000	mmho/m	2.011	405.777	mmho/m	1.000	0.000	
Medium	0.000	0.000	mmho/m	7.590	503.393	mmho/m	1.000	0.000	
LL3		7.500	V		1500.000	Ohm-m			
		0.000	V		20.000	Ohm-m			
		-7.200	V		3800.000	mmho-m			

After Survey Verification

	Readings				Targets			Results	
	Zero	Cal			Zero	Cal		m'	b'
Deep	0.000	0.000	mmho/m	0.000	0.000	mmho/m	0.000	0.000	
Medium	0.000	0.000	mmho/m	0.000	0.000	mmho/m	0.000	0.000	
LL3		1.000	Ohm-m		1.000	Ohm-m			
		0.000	Ohm-m		0.000	Ohm-m			
		1.000	mmho-m		1.000	mmho-m			

Litho Density Calibration Report  
 Serial: 001 Model: PRB

	Background	Magnesium	Aluminum	Sandstone	
Window 1	2056.0	9796.8	3673.1	10821.3	cps
Window 2	1920.0	8541.1	3303.5	9307.2	cps
Window 3	1563.1	4735.7	2212.8	5017.5	cps
Window 4	466.0	466.1	465.6	471.5	cps
Long Space	0.0	6621.1	1383.5	7387.2	cps
Short Space	2.5	2361.7	1523.2	2534.0	cps
Rho		1.7100	2.5900	1.3800	g/cc
Pe		0.0000	2.5700	1.5500	

Rib Angle	: 44.4	Rib Slope	: 0.978	Density/Spine Ratio	: 0.541
Spine Angle	: 74.4	Spine Slope	: 3.570	Spine Intercept	: -18.9

Before Survey Verification

Performed Wed Dec 31 18:00:00 1969

	Background	Magnesium	Aluminum	Sandstone	
Window 1	0.0	0.0	0.0	0.0	cps
Window 2	0.0	0.0	0.0	0.0	cps
Window 3	0.0	0.0	0.0	0.0	cps
Window 4	0.0	0.0	0.0	0.0	cps
Long Space	0.0	0.0	0.0	0.0	cps
Short Space	0.0	0.0	0.0	0.0	cps
Measured Rho		0.0000	0.0000	0.0000	g/cc
Measured Correction		0.0000	0.0000	0.0000	g/cc
Measured Pe			0.0000	0.0000	

After Survey Verification

Performed Wed Dec 31 18:00:00 1969

	Background	Magnesium	Aluminum	Sandstone	
Window 1	0.0	0.0	0.0	0.0	cps
Window 2	0.0	0.0	0.0	0.0	cps
Window 3	0.0	0.0	0.0	0.0	cps
Window 4	0.0	0.0	0.0	0.0	cps
Long Space	0.0	0.0	0.0	0.0	cps
Short Space	0.0	0.0	0.0	0.0	cps
Measured Rho		0.0000	0.0000	0.0000	g/cc
Measured Correction		0.0000	0.0000	0.0000	g/cc
Measured Pe			0.0000	0.0000	

Compensated Neutron Calibration Report

Serial Number: 6I  
Tool Model: G

CALIBRATION

Detector	Readings	Target	Normalization
Short Space	1.00 cps	1.00 cps	1.0000
Long Space	1.00 cps	1.00 cps	1.0000

PRE-SURVEY VERIFICATION

	Detector	Readings	Measured	Target
1)	Short Space	cps		
	Long Space	cps	pu	pu
2)	Short Space	cps		
	Long Space	cps	pu	
3)	Short Space	cps		

Long Space

cps

pu

POST-SURVEY VERIFICATION

	Detector	Readings	Measured	Target
1)	Short Space	cps		
	Long Space	cps	pu	pu
2)	Short Space	cps		
	Long Space	cps	pu	pu
3)	Short Space	cps		
	Long Space	cps	pu	pu

Gamma Ray Calibration Report

Serial Number:	GR6	
Tool Model:	OPEN	
Performed:	Fri Nov 29 08:34:37 2013	
Calibrator Value:	150.0	GAPI
Background Reading:	0.0	cps
Calibrator Reading:	276.0	cps
Sensitivity:	0.6035	GAPI/cps