



**COMPLETION
& PRODUCTION
SERVICES CO.**

**MICRO
LOG**

Company MULL DRILLING COMPANY, INC.
Well #1-23 BYRD
Field PFAFF
County NESS
State KANSAS

Company MULL DRILLING COMPANY, INC.
Well #1-23 BYRD
Field PFAFF
County NESS
State KANSAS

Location: API # : 15-135-25758-0000
1568' FNL & 1307' FEL
SEC 23 TWP 19S RGE 23W

Permanent Datum GROUND LEVEL Elevation 2212
Log Measured From KELLY BUSHING 5' A.G.L.
Drilling Measured From KELLY BUSHING

Other Services
CDL/CNL/PE
DIL/SONIC
Elevation
K.B. 2217
D.F. 2215
G.L. 2212

Date	4/13/14
Run Number	TWO
Depth Driller	4450
Depth Logger	4454
Bottom Logged Interval	4438
Top Log Interval	3500
Casing Driller	8 5/8" @ 214'
Casing Logger	214
Bit Size	7 7/8"
Type Fluid in Hole	CHEMICAL MUD
Density / Viscosity	9.4/58
pH / Fluid Loss	10.0/8.8
Source of Sample	FLOWLINE
Rim @ Meas. Temp	.500 @ 79F
Rmf @ Meas. Temp	.375 @ 79F
Rmc @ Meas. Temp	.600 @ 78F
Source of Rmf / Rmc	MEASUREMENT
Rim @ BHT	.325 @ 120F
Time Circulation Stopped	4.5 HOURS
Time Logger on Bottom	3:00 P.M.
Maximum Recorded Temperature	120F
Equipment Number	4854
Location	HAYS, KANSAS
Recorded By	JEFF LUEBBERS
Witnessed By	STEVE REED

<<< Fold Here >>>

All interpretations are opinions based on inferences from electrical or other measurements and we cannot and do not guarantee the accuracy or correctness of any interpretation, and we shall not, except in the case of gross or willful negligence on our part, be liable or responsible for any loss, costs, damages, or expenses incurred or sustained by anyone resulting from any interpretation made by any of our officers, agents or employees. These interpretations are also subject to our general terms and conditions set out in our current Price Schedule.

Comments

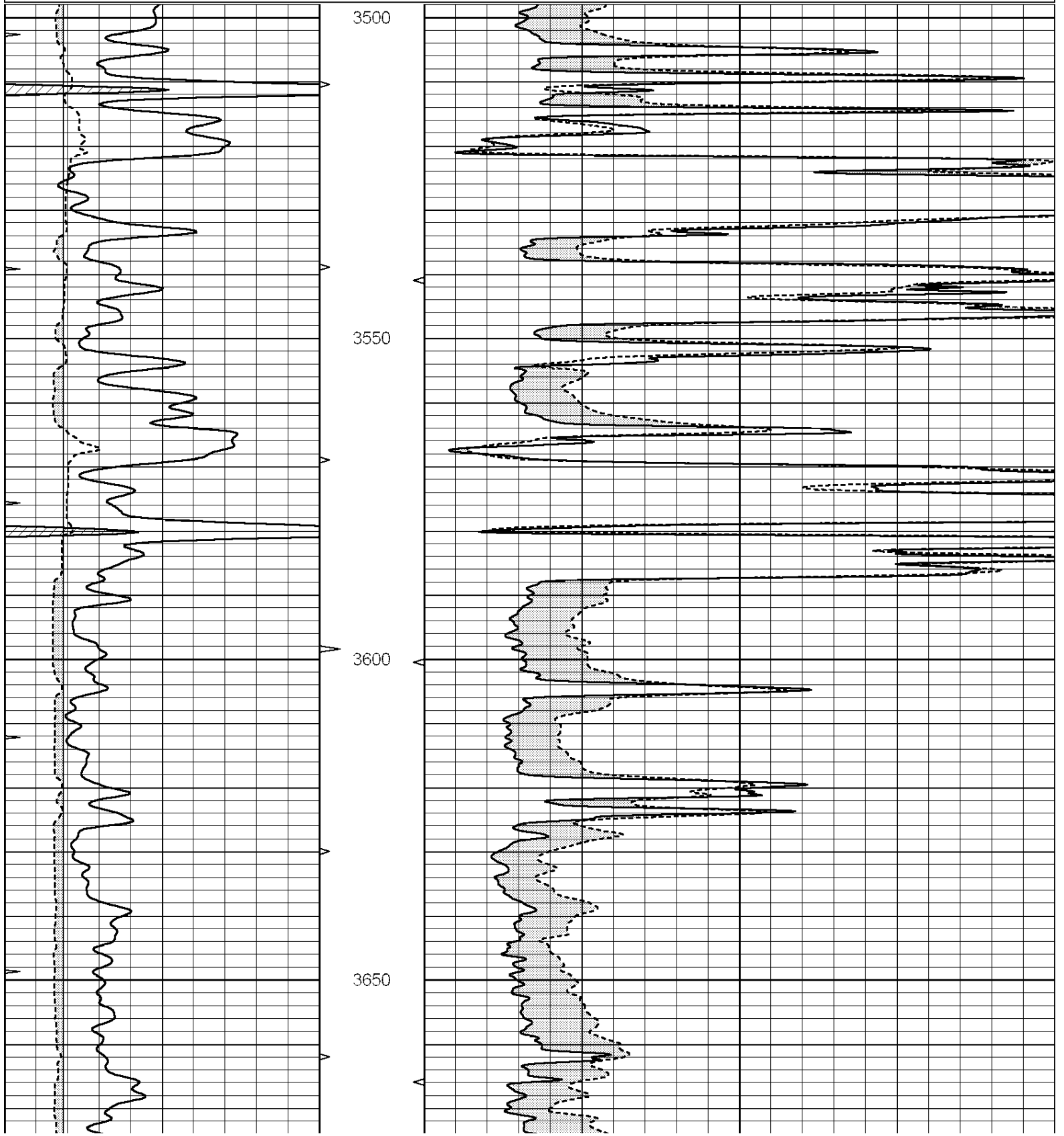
THANK YOU FOR USING "NABORS" HAYS, KANSAS (785) 628-6395
DIRECTIONS
NESS CITY, KS., 5S. ON HWY 283 TO "RD. 80", 4E. TO "W RD.", 1/2N., W. INTO

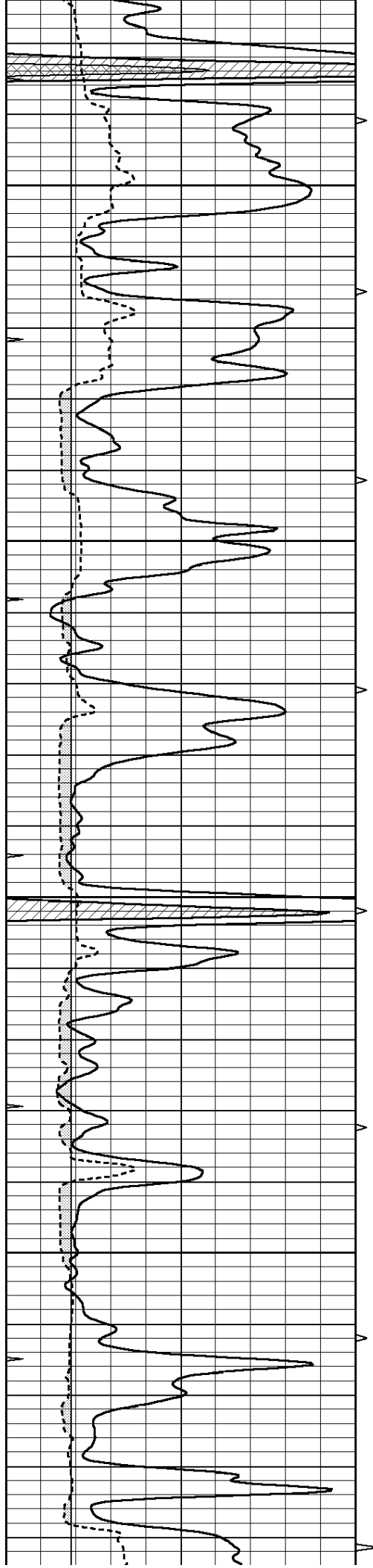


MAIN SECTION

Database File: 23808pe.db
 Dataset Pathname: pass6.2
 Presentation Format: micro
 Dataset Creation: Sun Apr 13 18:10:50 2014 by Calc SOC 120430
 Charted by: Depth in Feet scaled 1:240

0	GAMMA RAY (GAPI)	150	ABHV	0	MEL1.5 (Ohm-m)	20
6	CALIPER (in)	16	10 (ft3)	0	MEL2.0 (Ohm-m)	20
0	MINMK	20	TBHV			
			0 (ft3)	10		



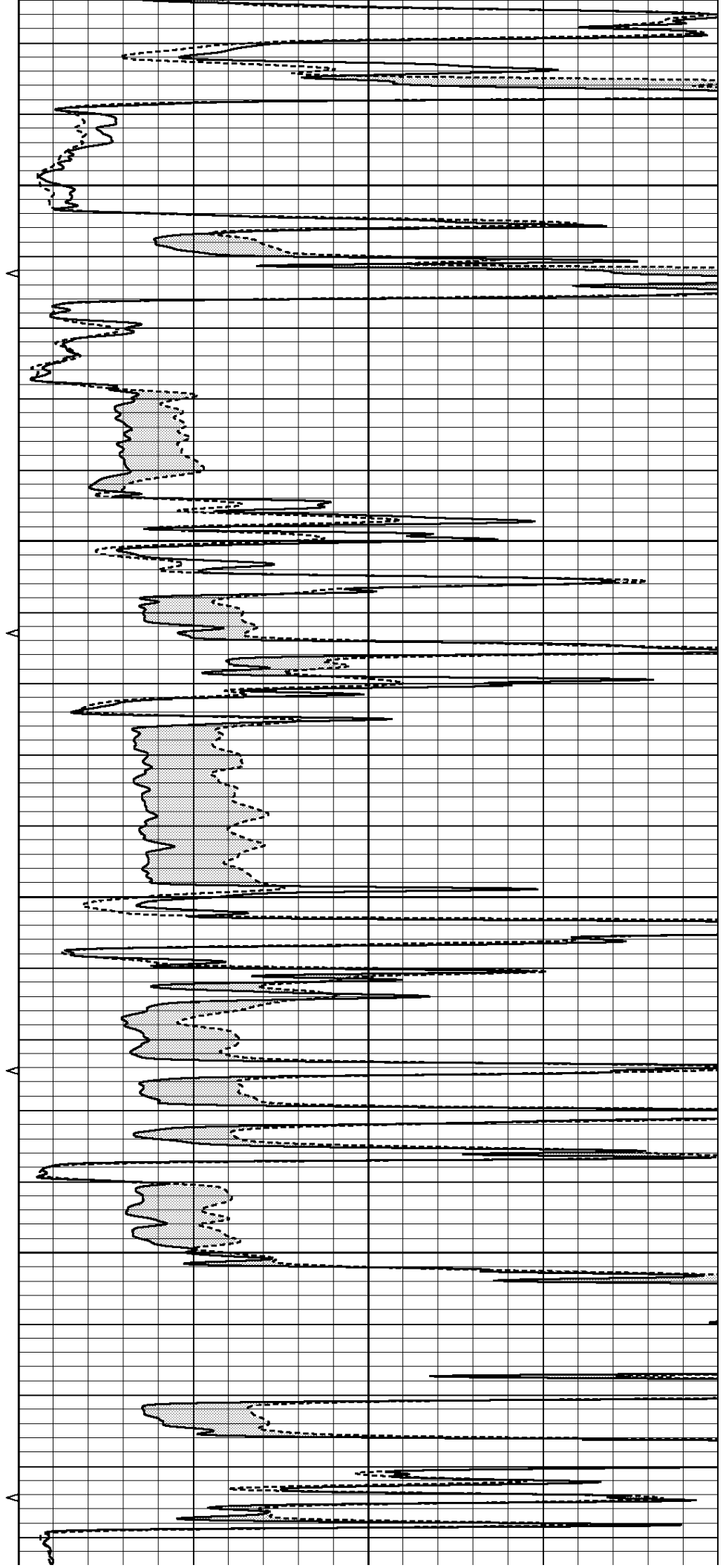


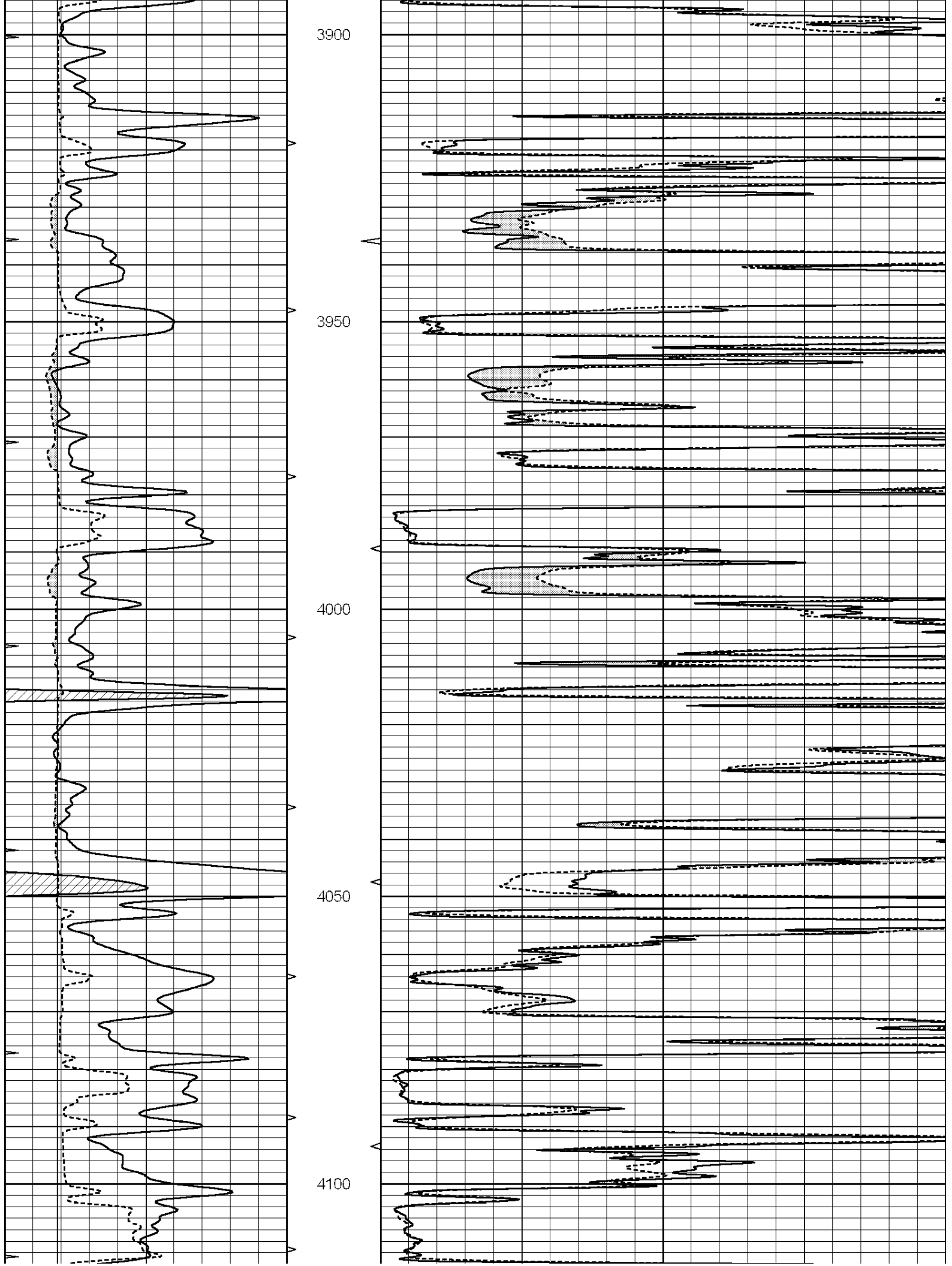
3700

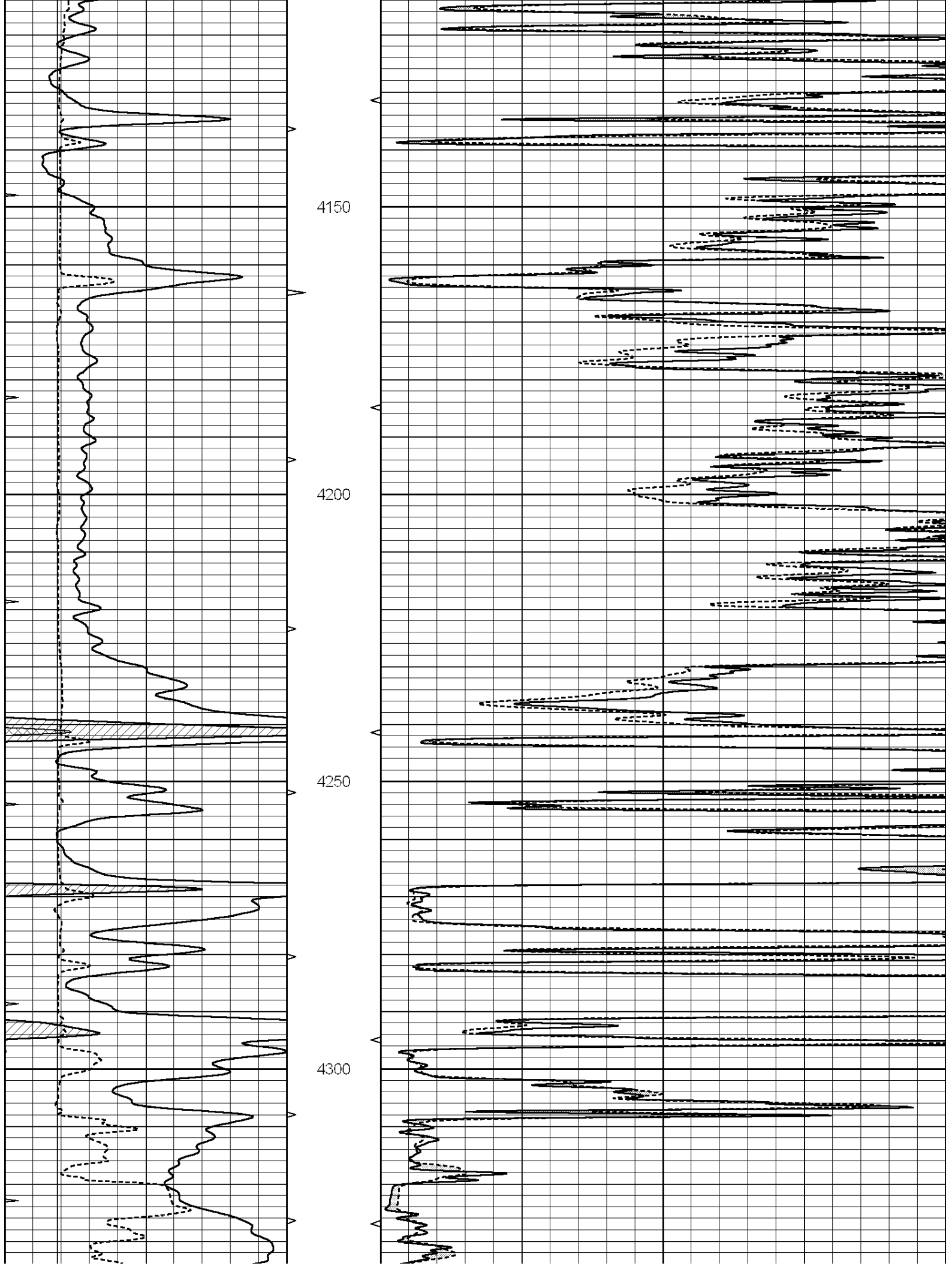
3750

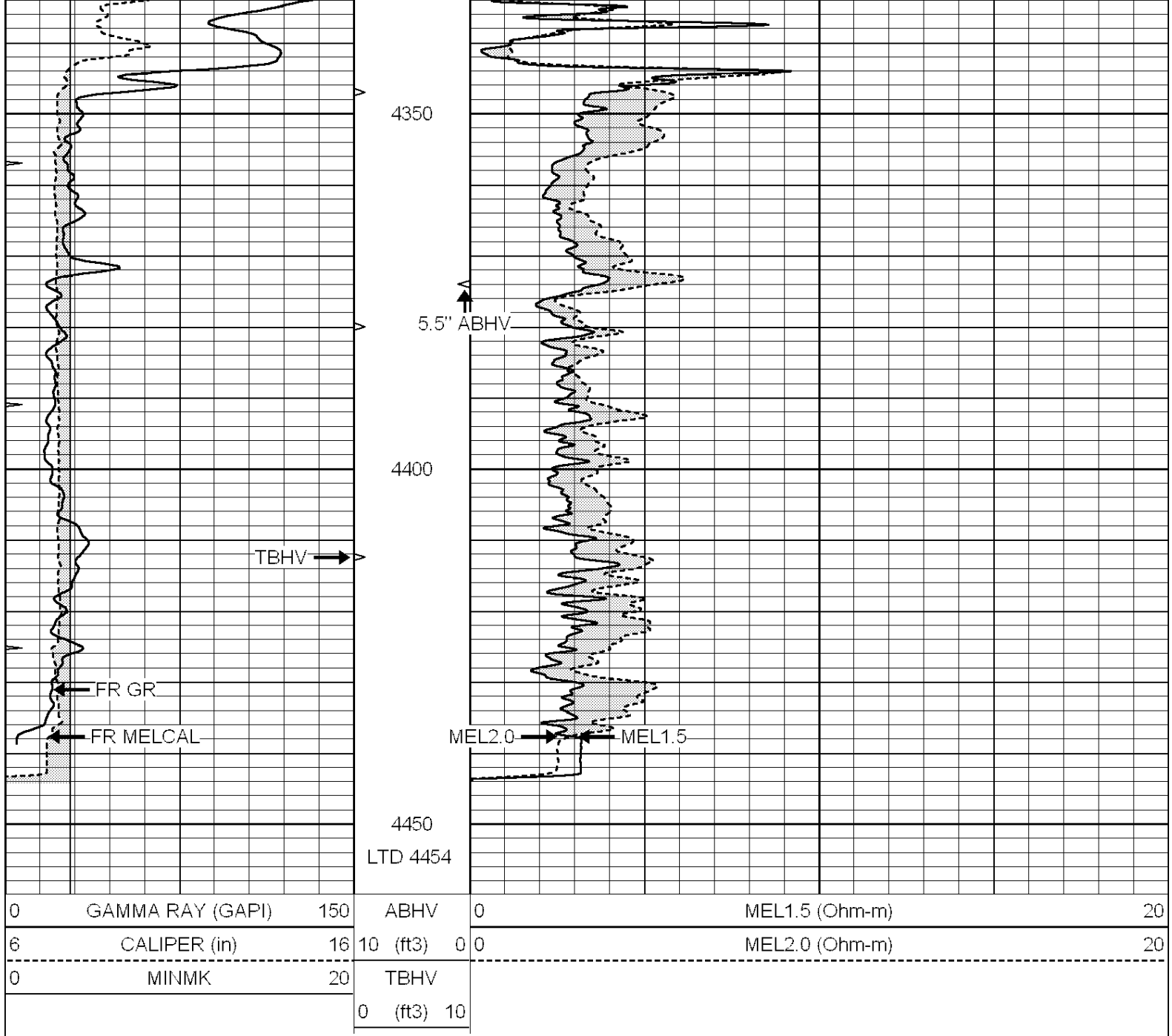
3800

3850







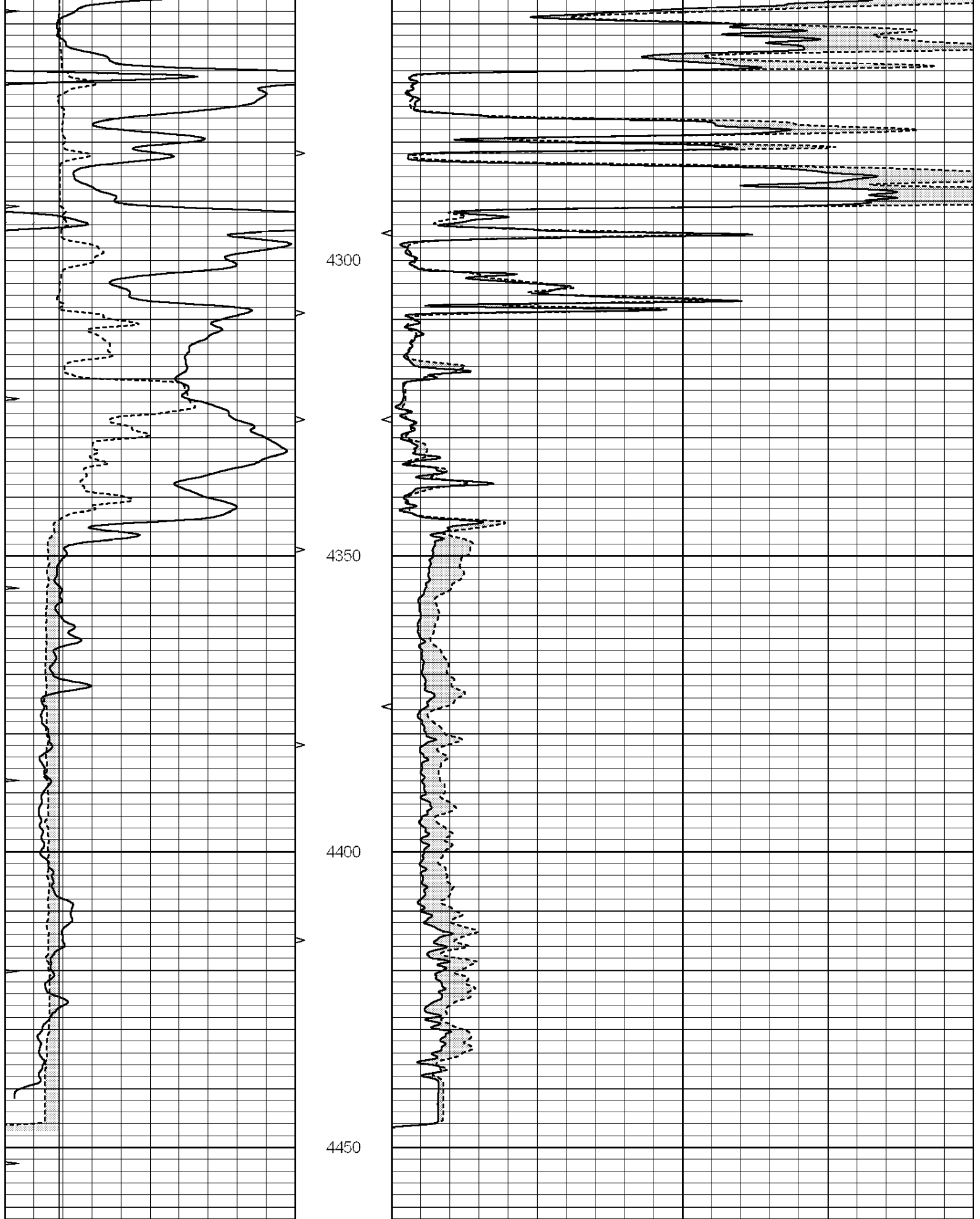


REPEAT SECTION

Database File: 23808pe.db
 Dataset Pathname: pass5.3
 Presentation Format: micro
 Dataset Creation: Sun Apr 13 18:19:03 2014 by Calc SOC 120430
 Charted by: Depth in Feet scaled 1:240

0	GAMMA RAY (GAPI)	150	ABHV	0	MEL1.5 (Ohm-m)	40
6	CALIPER (in)	16	10 (ft3)	0	MEL2.0 (Ohm-m)	40
0	MINMK	20	TBHV			
			0 (ft3)	10		





0	GAMMA RAY (GAPI)	150	ABHV	0	MEL1.5 (Ohm-m)	40
6	CALIPER (in)	16	10 (ft3)	0 0	MEL2.0 (Ohm-m)	40
0	MINMK	20	TBHV			

Calibration Report

Database File: 23808pe.db
 Dataset Pathname: pass6.2
 Dataset Creation: Sun Apr 13 18:10:50 2014 by Calc SOC 120430

MICRO Calibration Report

Serial Number: 070911
 Tool Model: ProbeN
 Performed: Sun Apr 13 16:44:42 2014

Caliper Calibration:	Gain=3.712	Offset=3.043
	Low Cal	High Cal
References	7.800	15.000
Readings	1.281	3.221

1.5" Calibration:	Gain=26.000	Offset=-0.500
	Low Cal	High Cal
References	0.000	20.000
Readings	0.001	1.276

2" Calibration:	Gain=50.000	Offset=-1.000
	Low Cal	High Cal
References	0.000	20.000
Readings	0.003	1.108

Gamma Ray Calibration Report

Serial Number: 070559
 Tool Model: OPEN_GR
 Performed: Mon Mar 24 02:01:13 2014

Calibrator Value:	1.0	GAPI
Background Reading:	0.0	cps
Calibrator Reading:	1.0	cps
Sensitivity:	0.2200	GAPI/cps