



**GAMMA RAY
NEUTRON
COMPLETION LOG**

Company **N & W ENTERPRISES, INC.**
 Well **FRANKLIN #8**
 Field **WALNUT SE**
 County **CRAWFORD**
 State **KANSAS**

Company **N & W ENTERPRISES, INC.**
 Well **FRANKLIN #8**
 Field **WALNUT SE**
 County **CRAWFORD** State **KANSAS**

Location: API # : 15-037-22259-00-00
 2145' FSL & 2805' FEL
 SE NE NE SW
 SEC 29 TWP 28S RGE 22E
 Permanent Datum GL Elevation 965'EST.
 Log Measured From GL K.B.
 Drilling Measured From GL D.F.
 G.L. 965'EST.
 Other Services

| | | | |
|------------------------|-------------|---|---|
| Date | 6-23-14 | | |
| Run Number | 1 NW | | |
| Depth Driller | 430' | | |
| Depth Logger | 433.4' | | |
| Top Log Interval | 0 | | |
| Bottom Logged Interval | 433.4' | | |
| Fluid Level | FULL | | |
| Type Fluid | WATER | | |
| Production Casing | 2 7/8" @ TD | @ | @ |
| Max. Recorded Temp. | | | |
| Estimated Cement Top | | | |
| Calculated Cement Top | | | |
| Amount & Type Cement | | | |
| Amount & Type Admix | | | |
| Drilling Contractor | | | |
| Equipment Number | 103 | | |
| Location | | | |
| Recorded By | SOLOMON, B. | | |
| Witnessed By | NORRIS, T. | | |

<<< Fold Here >>>

All interpretations are opinions based on inferences from electrical or other measurements and we cannot and do not guarantee the accuracy or correctness of any interpretation, and we shall not, except in the case of gross or willful negligence on our part, be liable or responsible for any loss, costs, damages, or expenses incurred or sustained by anyone resulting from any interpretation made by any of our officers, agents or employees. These interpretations are also subject to our general terms and conditions set out in our current Price Schedule.

Comments

THANK YOU

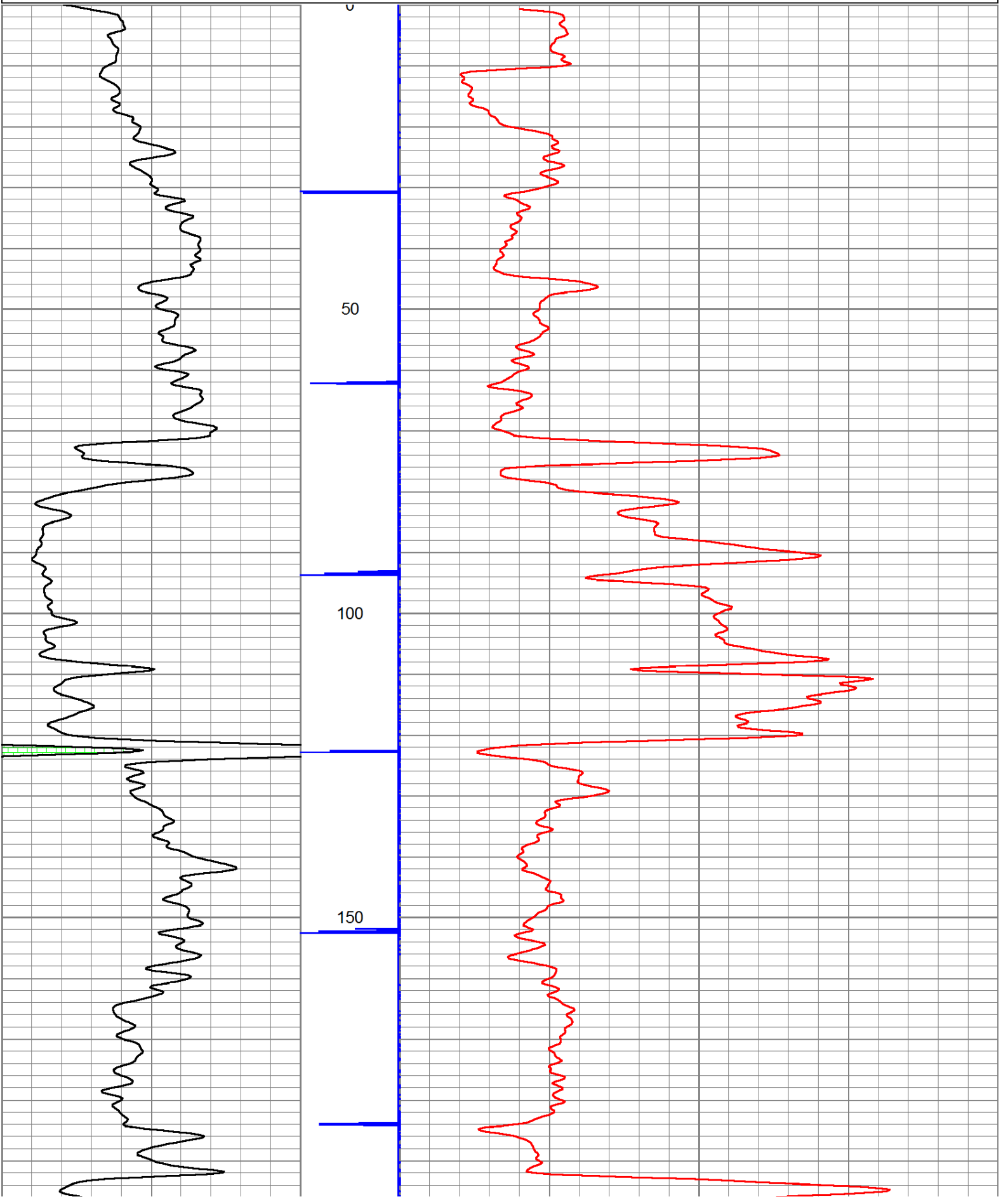
| Sensor | Offset (ft) | Schematic | Description | Len (ft) | OD (in) | Wt (lb) |
|--------|-------------|-----------|-------------|----------|---------|---------|
| | | | | | | |

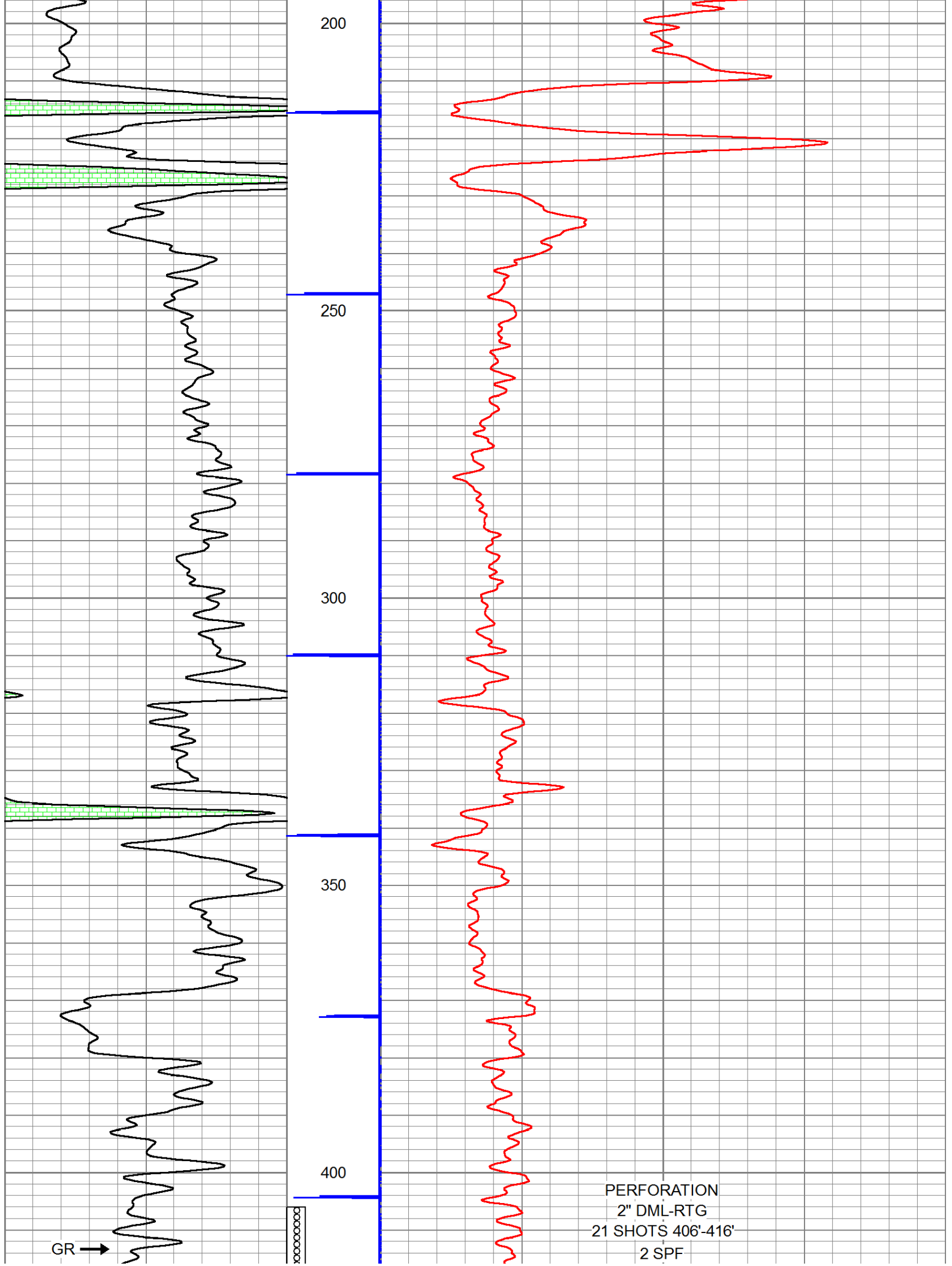
| | | | | | | |
|-----|------|--|---|------|------|-------|
| GR | 7.59 | | GR-TITAN_169 (TIT169_001) Titan 1 11/16" Gamma Ray | 4.75 | 1.69 | 20.00 |
| CCL | 5.05 | | CCL-TITAN_169 (TIT169) Titan 1 11/16" Logging CCL | 1.83 | 1.69 | 7.50 |
| NEU | 0.63 | | NEU-TITAN (TIT801) TITAN 1 11/16" Neutron | 4.33 | 1.69 | 25.00 |

Dataset: franklin #8.db: field/well/run1/pass1
 Total Length: 10.92 ft
 Total Weight: 52.50 lb
 O.D.: 1.69 in

Database File: e:\franklin #8.db
 Dataset Pathname: pass1
 Presentation Format: gr-n-ccl

| | | | | | | | |
|-----|----|-----|---|---------|-----|-----------|------|
| 150 | gr | 300 | 3 | CCLJ.05 | 100 | NEU (cps) | 1800 |
| 0 | GR | 150 | | | | | |





200

250

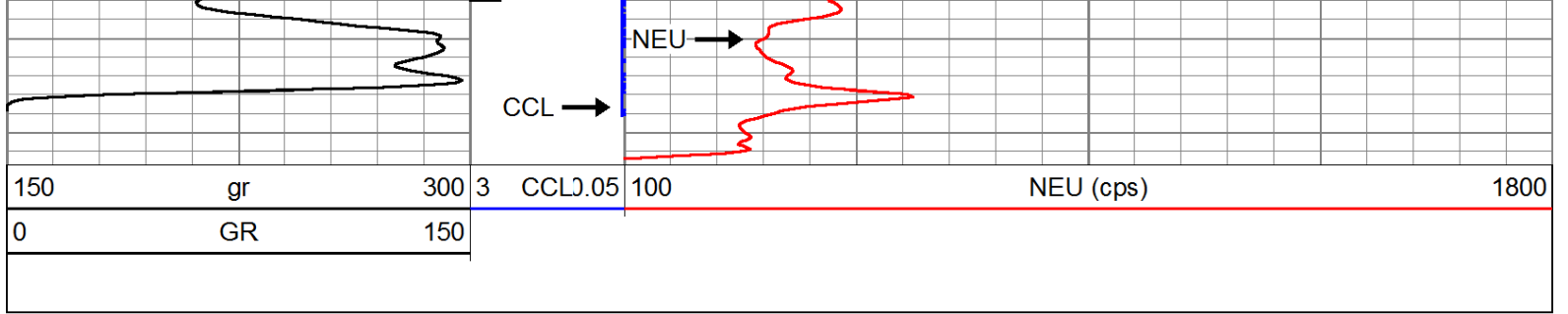
300

350

400

GR →

PERFORATION
2" DML-RTG
21 SHOTS 406'-416'
2 SPF



| | |
|---------|------------------------------------|
| Company | N & W ENTERPRISES, INC. |
| Well | FRANKLIN #8 |
| Field | WALNUT SE |
| County | CRAWFORD SEC. 29 TWP. 28S RGE. 22E |
| State | KANSAS |
| Date | 6-23-14 |