



Pioneer Energy Services

Microresistivity Log

15-035-24586-00-00

Company **Val Energy, Inc.**
 Well **Lawrence #1-32**
 Field **Wilson**
 County **Cowley** State **Kansas**

Location **N2 SW NW NW
835' FNL / 330' FWL**
 Sec: **32** Twp: **32S** Rge: **6E**
 Permanent Datum **Ground Level** Elevation **1298**
 Log Measured From **Kelly Bushing** 10 Ft. Above Perm. Datum
 Drilling Measured From **Kelly Bushing**
 Other Services **CNL/CDL
DIL**
 Elevation **K.B. 1308
D.F. 1298
G.L. 1298**

Date	6/19/2014
Run Number	One
Depth Driller	3434
Depth Logger	3432
Bottom Logged Interval	3431
Top Log Interval	1750
Casing Driller	8.625 @ 308
Casing Logger	302
Bit Size	7.875
Type Fluid in Hole	Chemical
Salinity, ppm CL	600
Density / Viscosity	9.4 50
pH / Fluid Loss	10.5 8.8
Source of Sample	Flowline
Rm @ Meas. Temp	1.70 @ 80
Rmf @ Meas. Temp	1.28 @ 80
Rmc @ Meas. Temp	2.30 @ 80
Source of Rmf / Rmc	Charts
Rm @ BHT	1.23 @ 110
Operating Rig Time	4 Hours
Max Rec. Temp. F	110
Equipment Number	17
Location	Hays
Recorded By	R. Barnhart
Witnessed By	Harley Sayles

<<< Fold Here >>>

All interpretations are opinions based on inferences from electrical or other measurements and we cannot and do not guarantee the accuracy or correctness of any interpretation, and we shall not, except in the case of gross or willful negligence on our part, be liable or responsible for any loss, costs, damages, or expenses incurred or sustained by anyone resulting from any interpretation made by any of our officers, agents or employees. These interpretations are also subject to our general terms and conditions set out in our current Price Schedule.

Comments

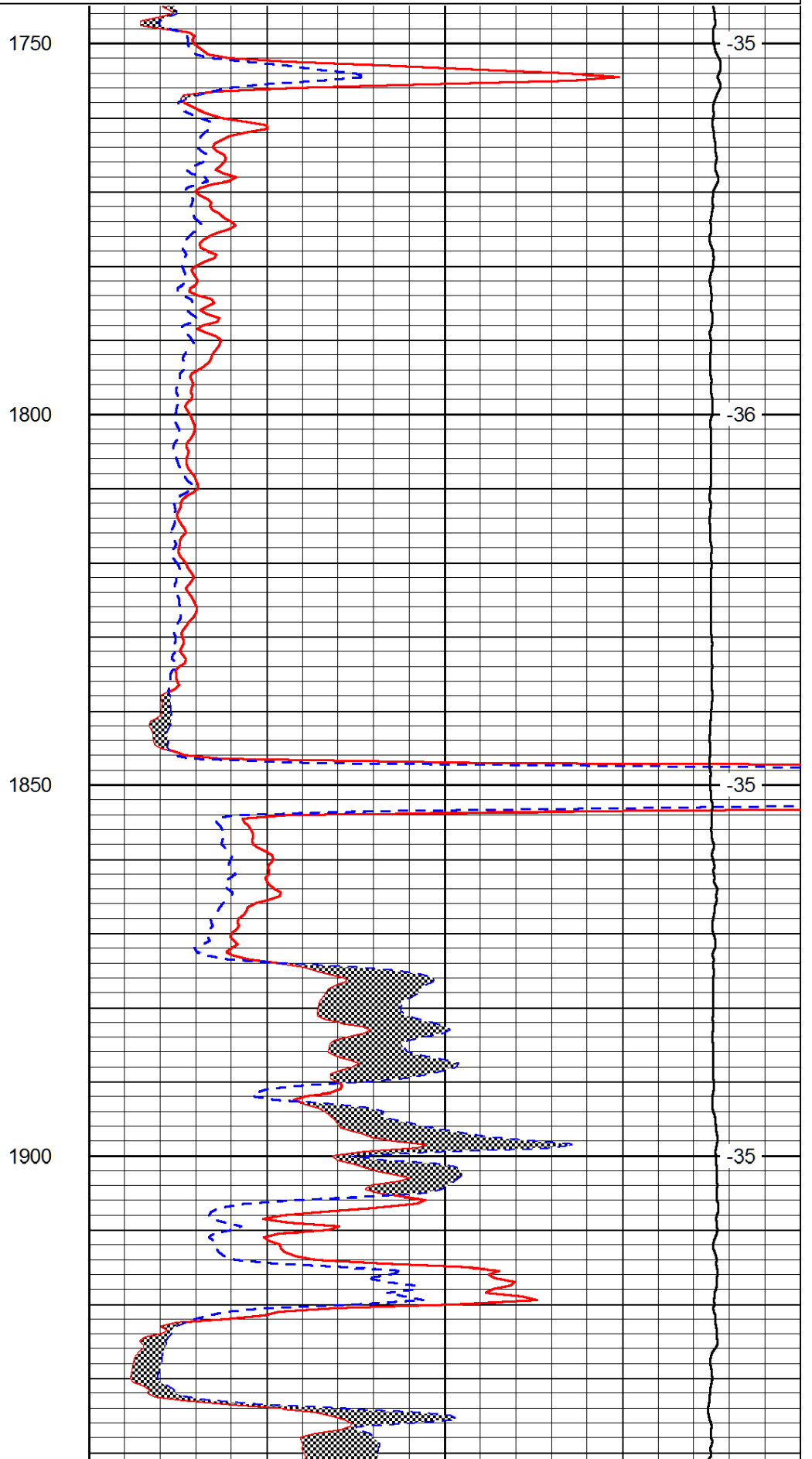
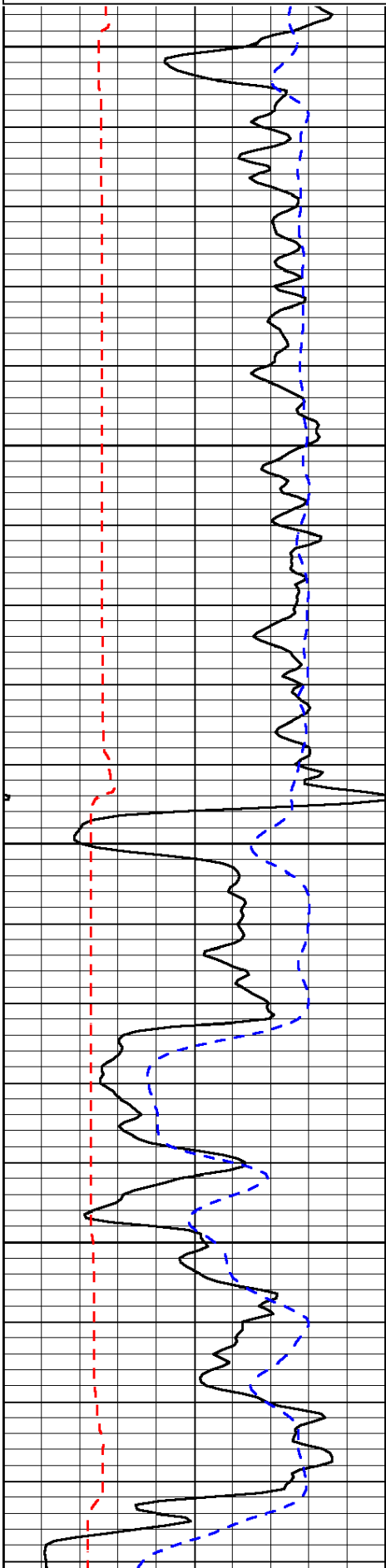
Thank you for using Log-Tech, Inc.
 (785) 625-3858
 Winfield, KS:
 11 1/4E to 201 Rd., 1S, 1W, 1/4S, E into

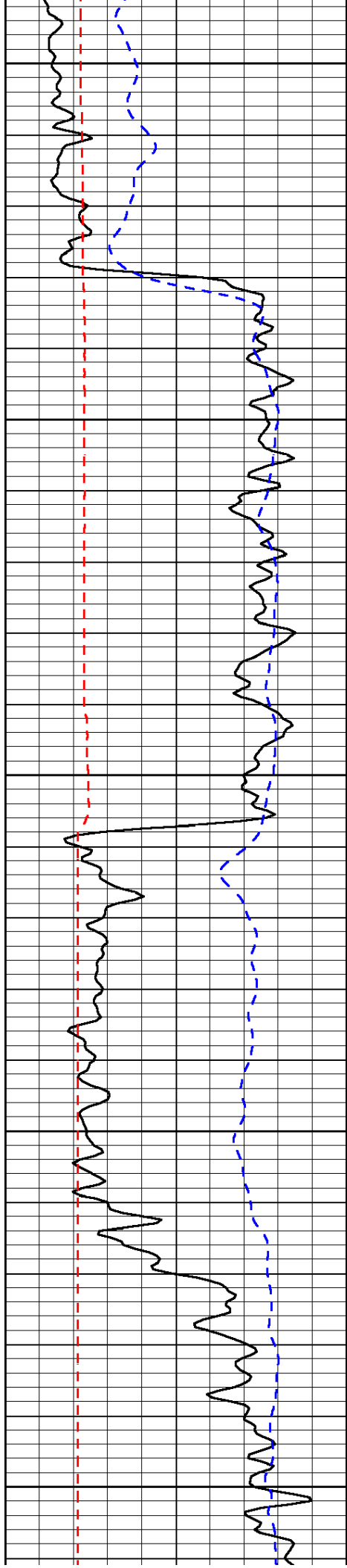
Database File: val_hd.db
 Dataset Pathname: dil/valmain
 Presentation Format: micro
 Dataset Creation: Thu Jun 19 19:10:27 2014
 Charted by: Depth in Feet scaled 1:240

0	Gamma Ray	150
6	MCAL (GAPI)	16
2.875	Mud Cake (GAPI)	7.875
-200	SP (mV)	0

0	Micro Inverse 1 X 1	40
0	Micro Normal 2"	40
10000	Line Weight	0

LSPD





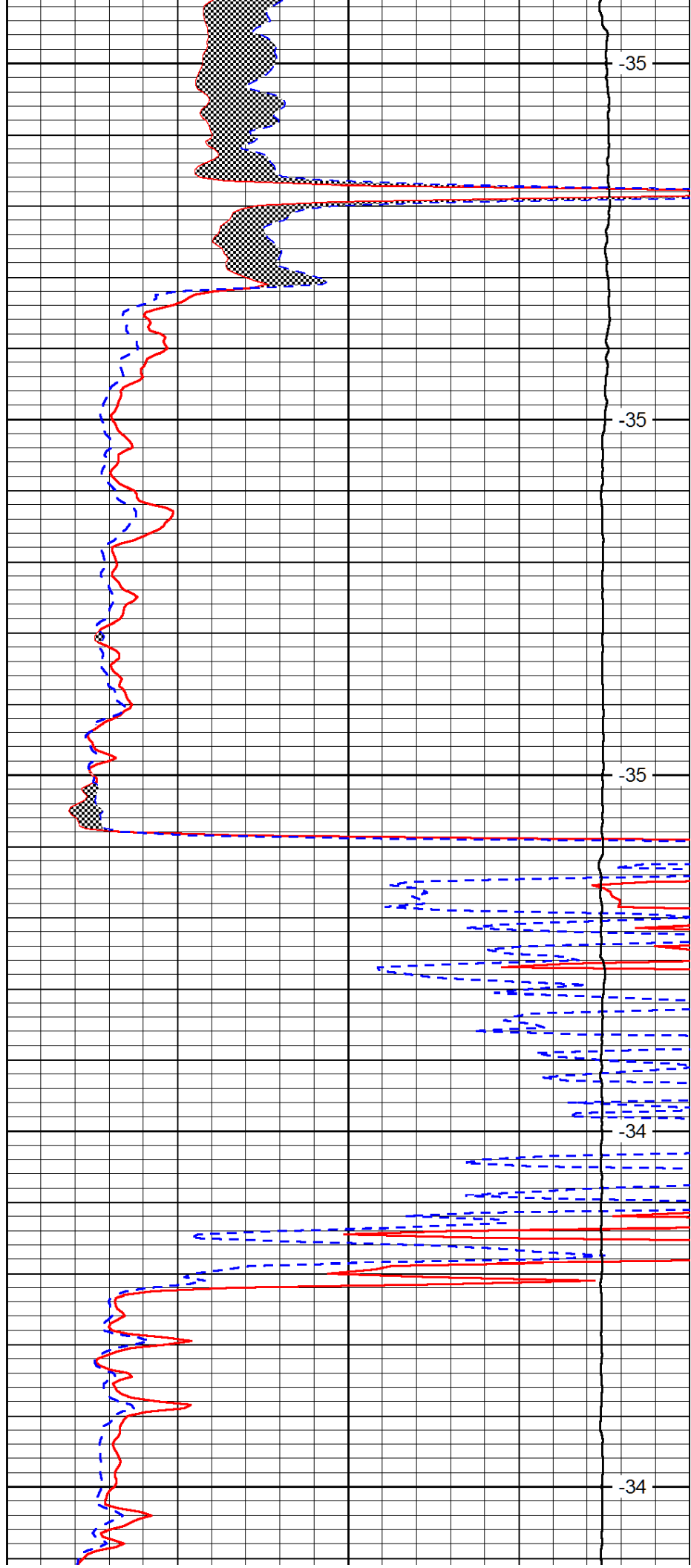
1950

2000

2050

2100

2150



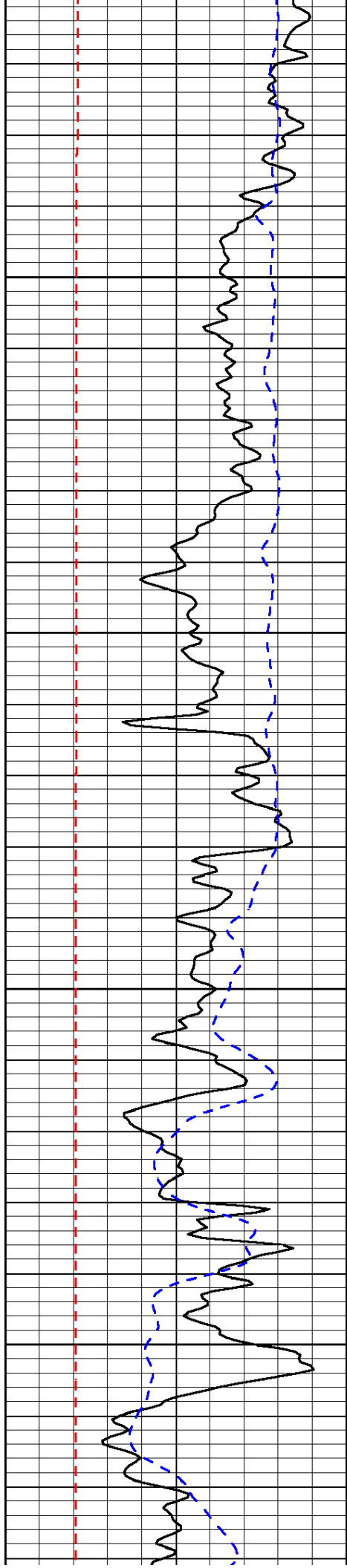
-35

-35

-35

-34

-34

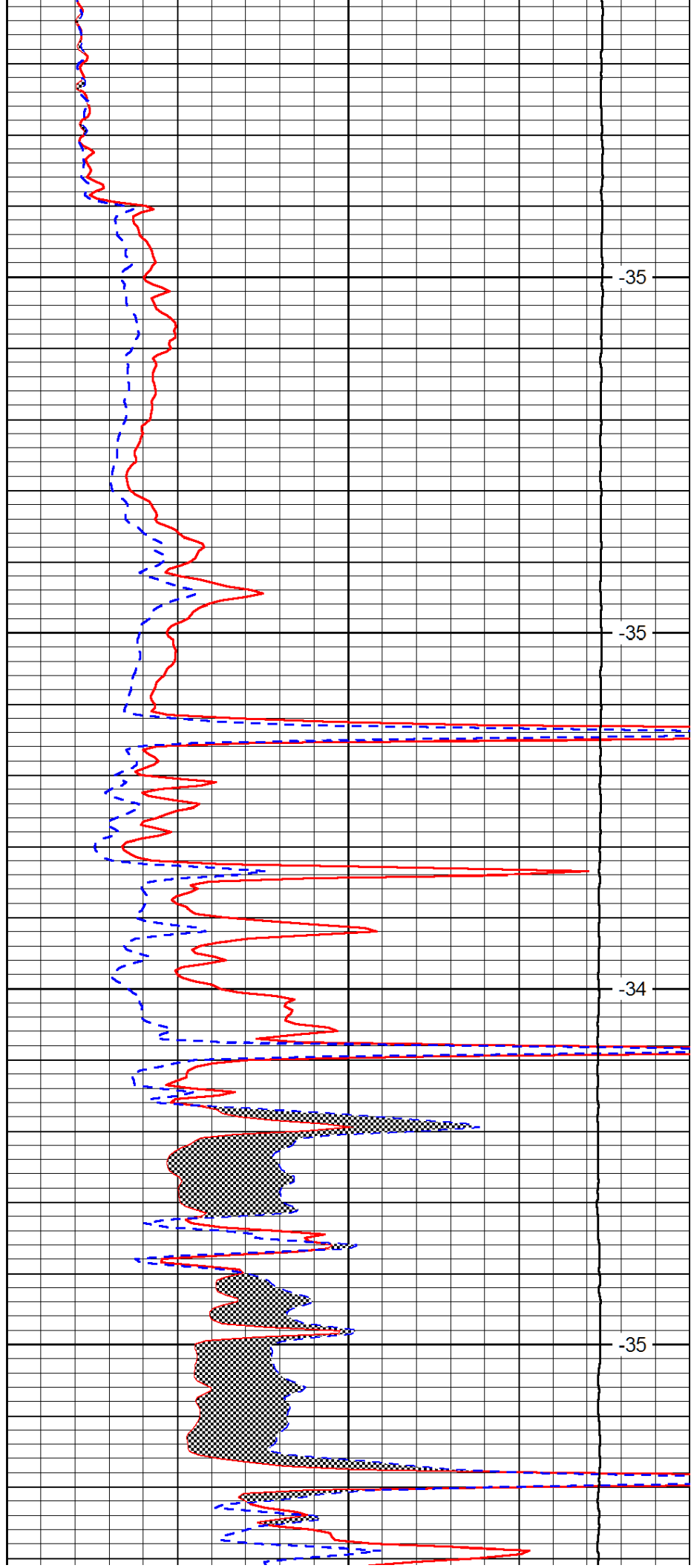


2200

2250

2300

2350

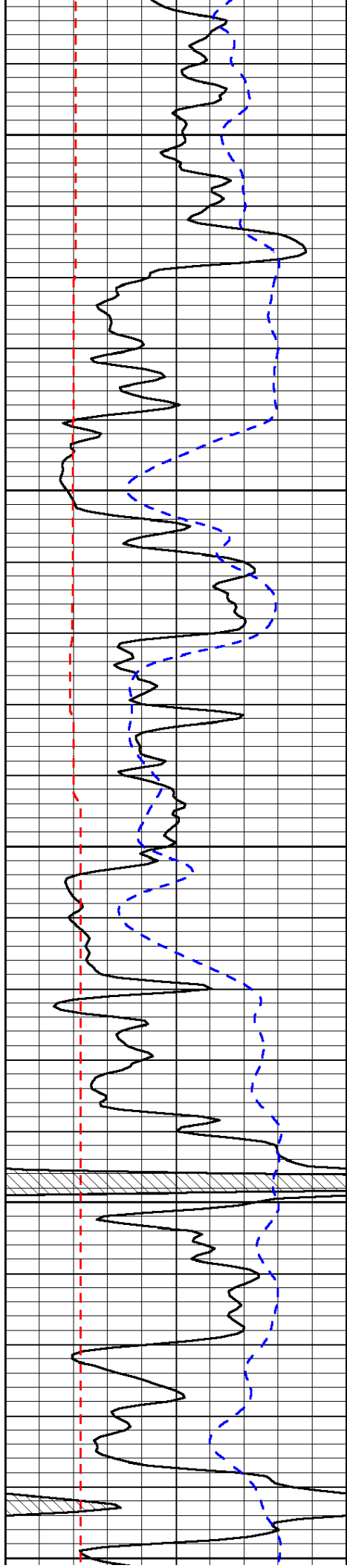


-35

-35

-34

-35



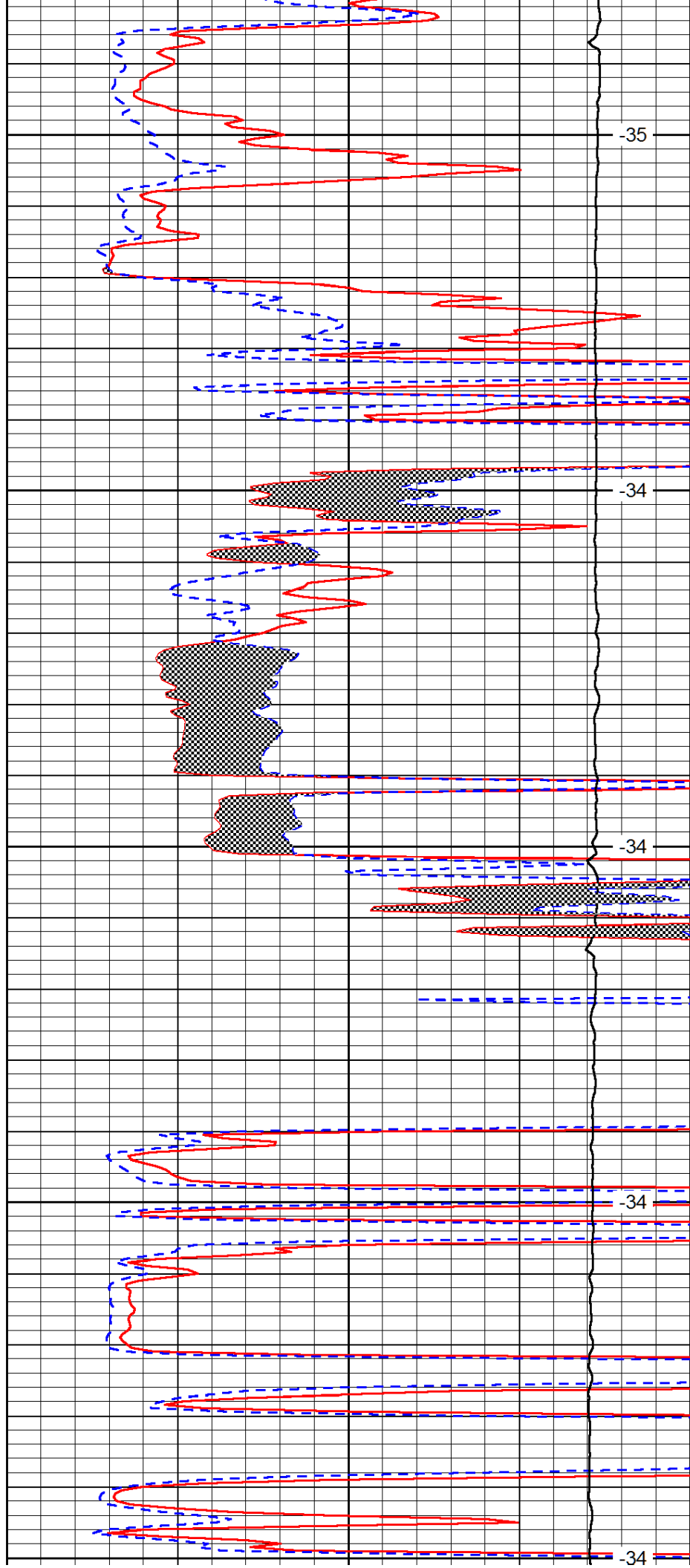
2400

2450

2500

2550

2600



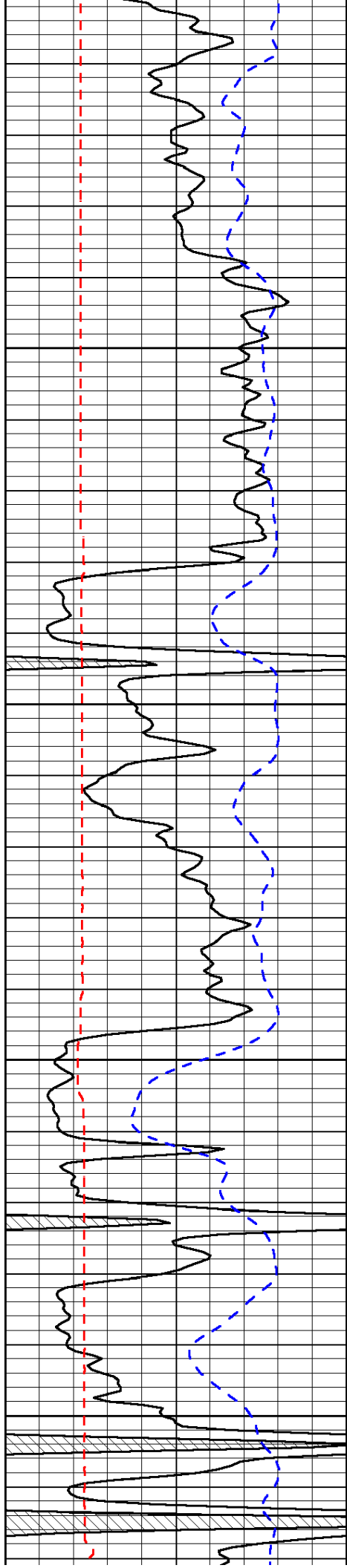
-35

-34

-34

-34

-34

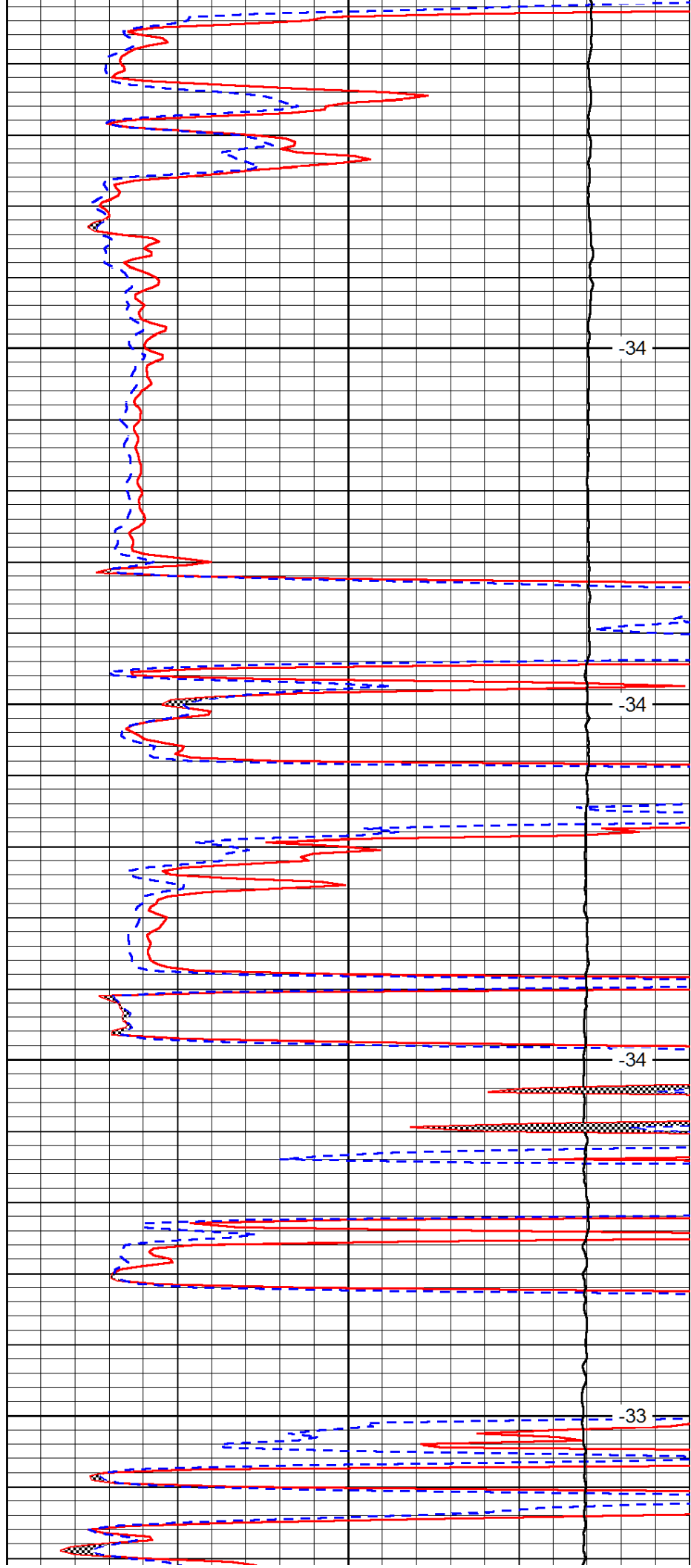


2650

2700

2750

2800

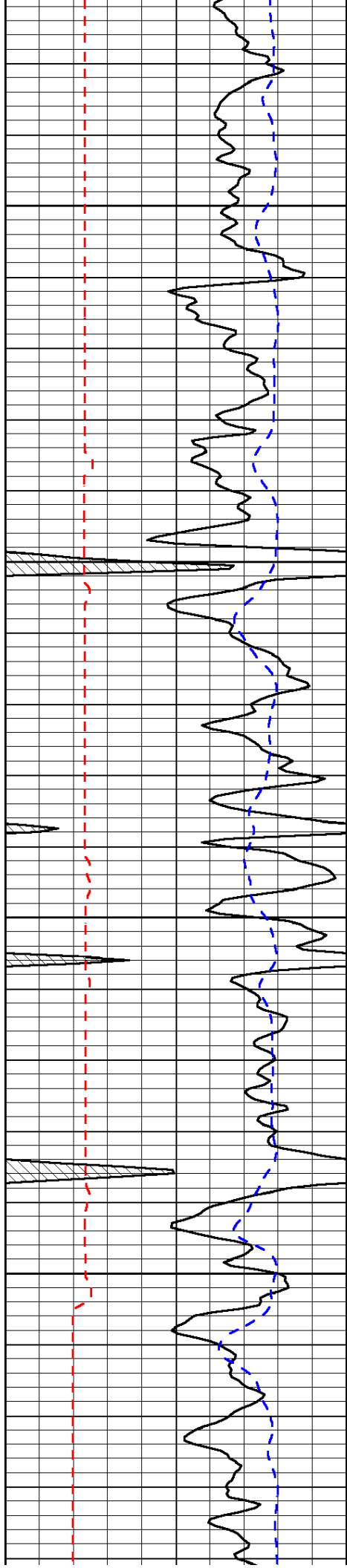


-34

-34

-34

-33

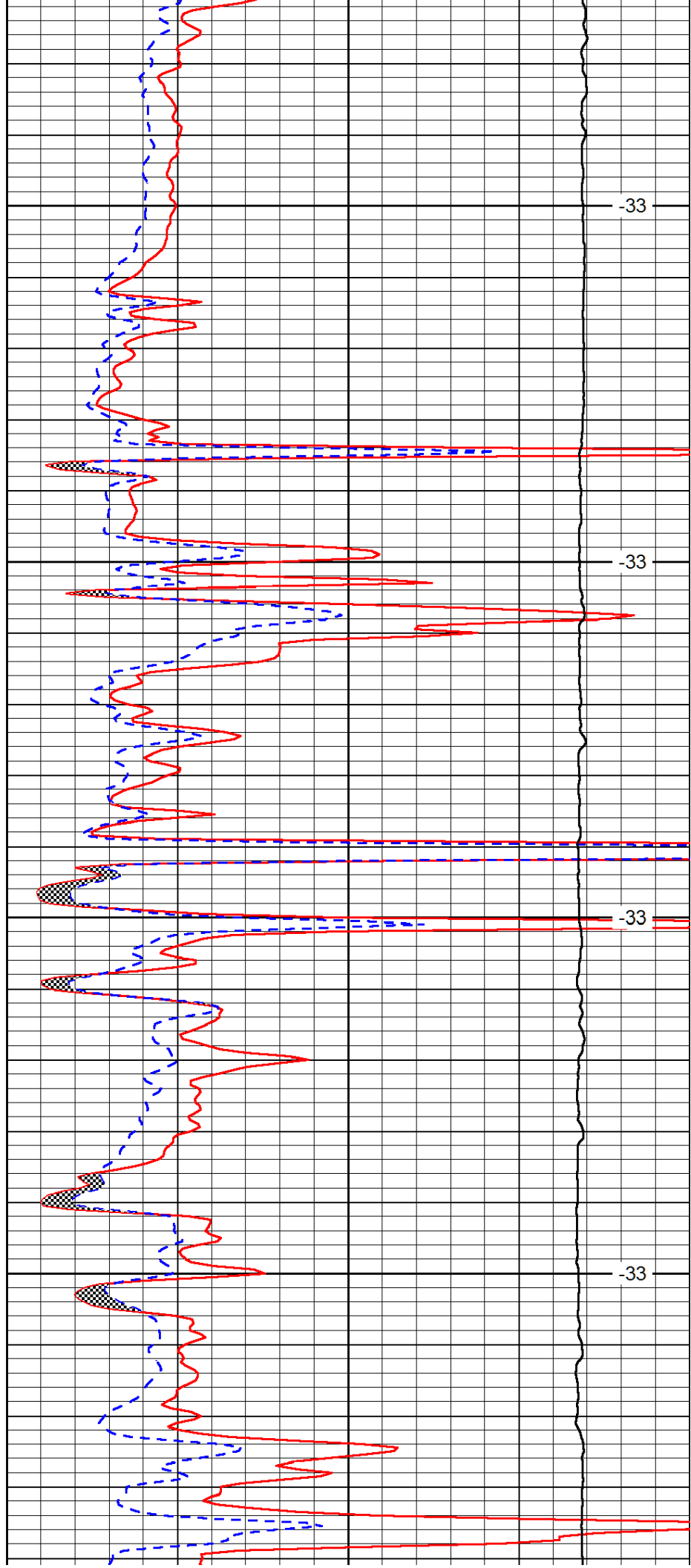


2850

2900

2950

3000

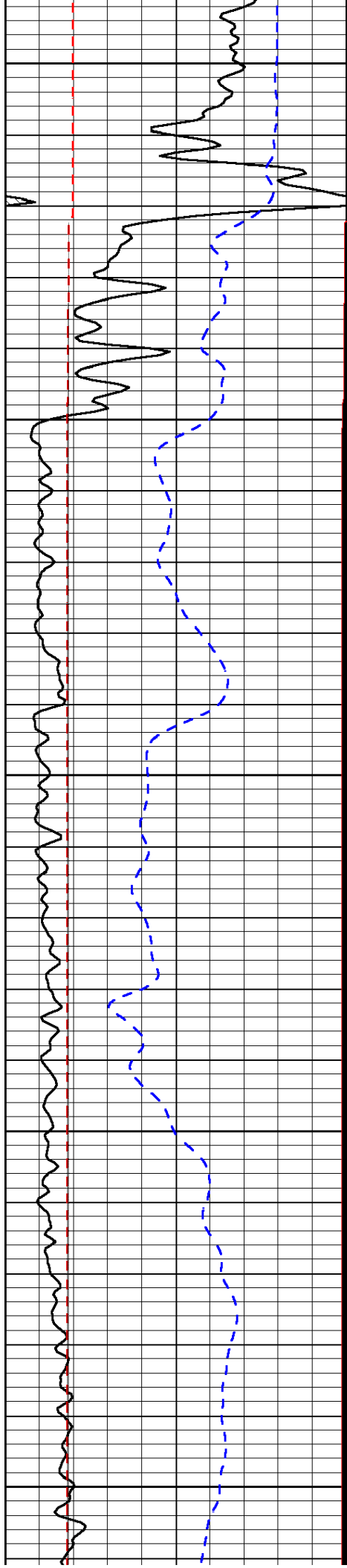


-33

-33

-33

-33



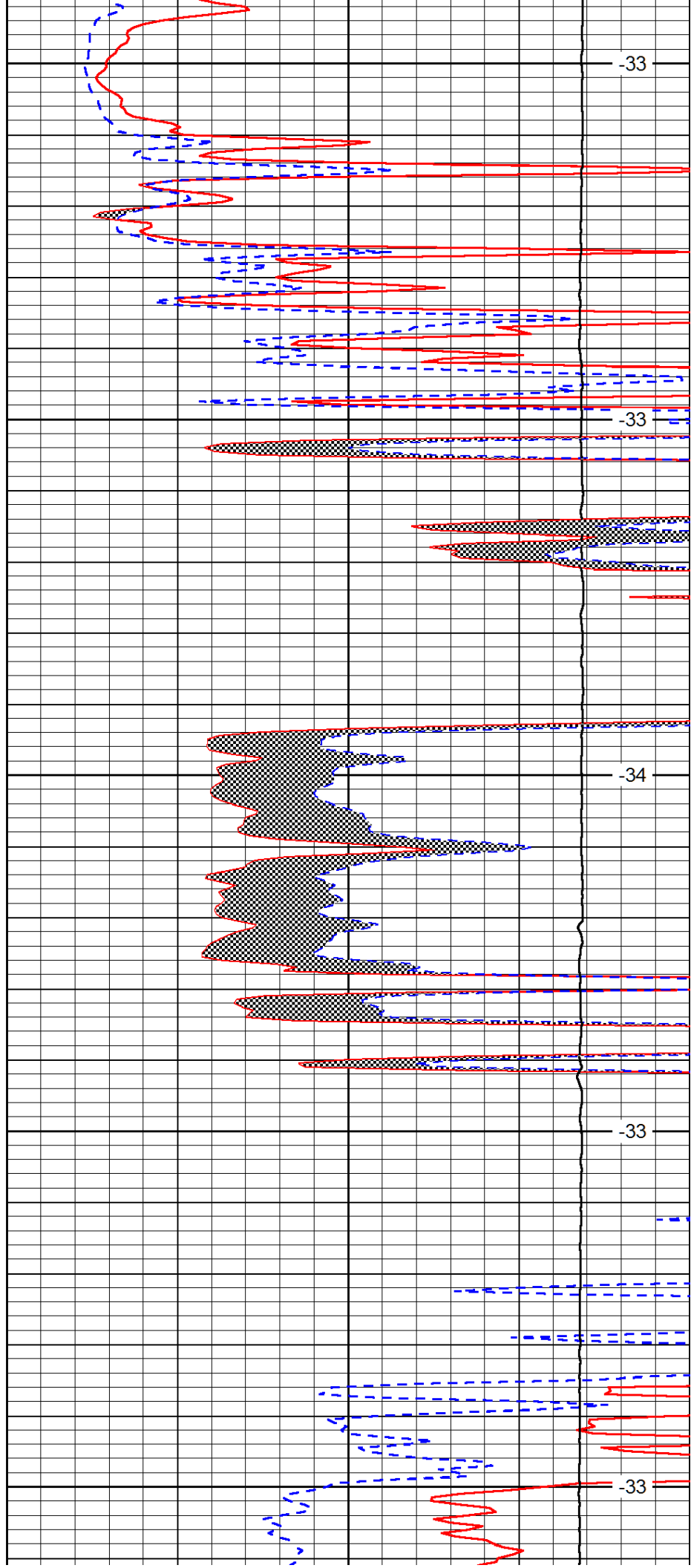
3050

3100

3150

3200

3250



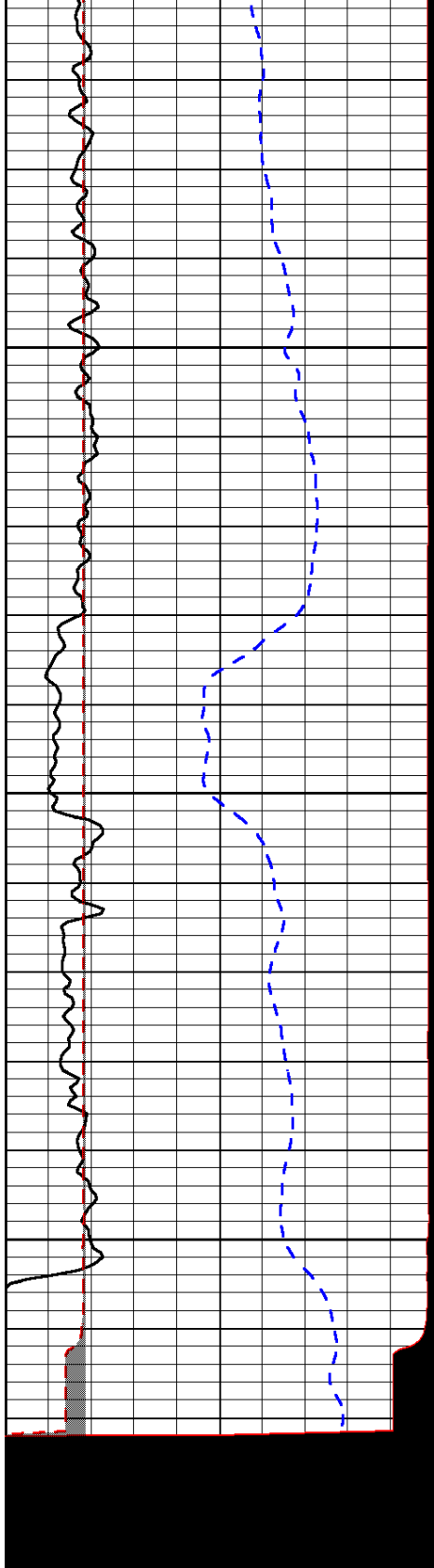
-33

-33

-34

-33

-33

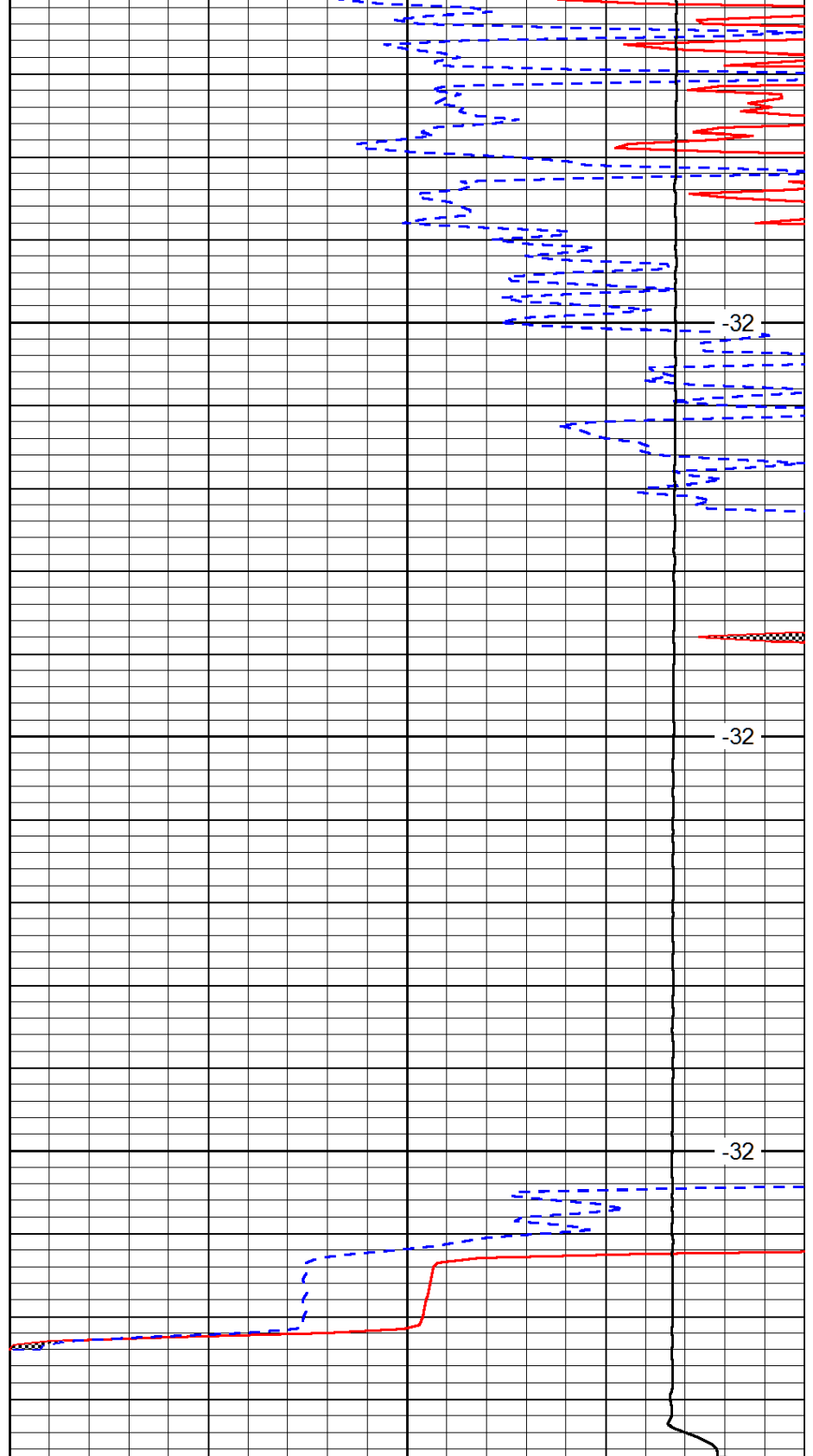


0	Gamma Ray	150
6	MCAL (GAPI)	16
2.875	Mud Cake (GAPI)	7.875
-200	SP (mV)	0

3300

3350

3400



0	Micro Inverse 1 X 1	40
0	Micro Normal 2"	40
10000	Line Weight	0

-32

-32

-32

LSPD