



Pioneer Energy Services

Dual Compensated Porosity Log

| | | | |
|------------------------|------------------------------------|--------------------------|------------------|
| API No. | 15-035-24586-00-00 | | |
| Company | Val Energy, Inc. | | |
| Well | Lawrence #1-32 | | |
| Field | Wilson | | |
| County | Cowley | | State Kansas |
| Location | N2 SW NW NW 835' FNL / 330' FWL | | |
| Sec: 32 | Twp: 32S | Rge: 6E | |
| Permanent Datum | Ground Level | Elevation 1298 | |
| Log Measured From | Kelly Bushing | 10 Ft. Above Perm. Datum | K.B. 1308 |
| Drilling Measured From | Kelly Bushing | | D.F. G.I.L. 1298 |
| Other Services | | DIL/MEL | |

| | | | |
|------------------------|---------------|------|-----|
| Date | 6/19/2014 | | |
| Run Number | One | | |
| Type Log | CNL / CDL | | |
| Depth Driller | 3434 | | |
| Depth Logger | 3432 | | |
| Bottom Logged Interval | 3411 | | |
| Top Logged Interval | 1750 | | |
| Type Fluid In Hole | Chemical | | |
| Salinity, PPM CL | 600 | | |
| Density | 9.4 | | |
| Level | Full | | |
| Max. Rec. Temp. F | 110 | | |
| Operating Rig Time | 4 Hours | | |
| Equipment -- Location | 17 Hays | | |
| Recorded By | R. Barnhart | | |
| Witnessed By | Harley Sayles | | |
| Borehole Record | | | |
| Run No | Bit | From | To |
| One | 12.25 | 00 | 308 |
| Two | 7.875 | 308 | TD |
| Casing Record | | | |
| | Size | Wgt. | To |
| | 8.625 | 23# | 308 |

<<< Fold Here >>>

All interpretations are opinions based on inferences from electrical or other measurements and we cannot and do not guarantee the accuracy or correctness of any interpretation, and we shall not, except in the case of gross or willful negligence on our part, be liable or responsible for any loss, costs, damages, or expenses incurred or sustained by anyone resulting from any interpretation made by any of our officers, agents or employees. These interpretations are also subject to our general terms and conditions set out in our current Price Schedule.

Comments

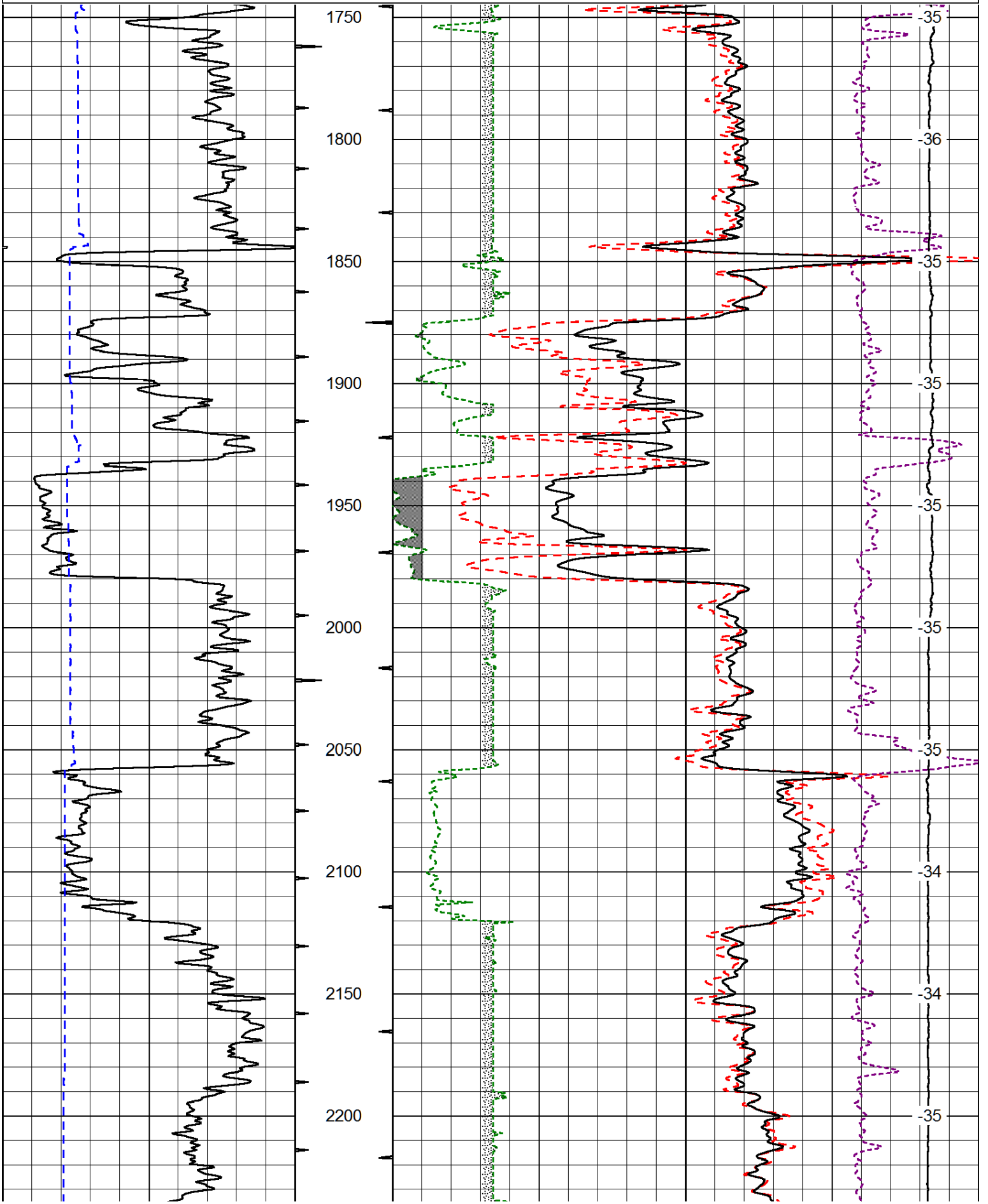
Thank you for using Log-Tech, Inc.
(785) 625-3858

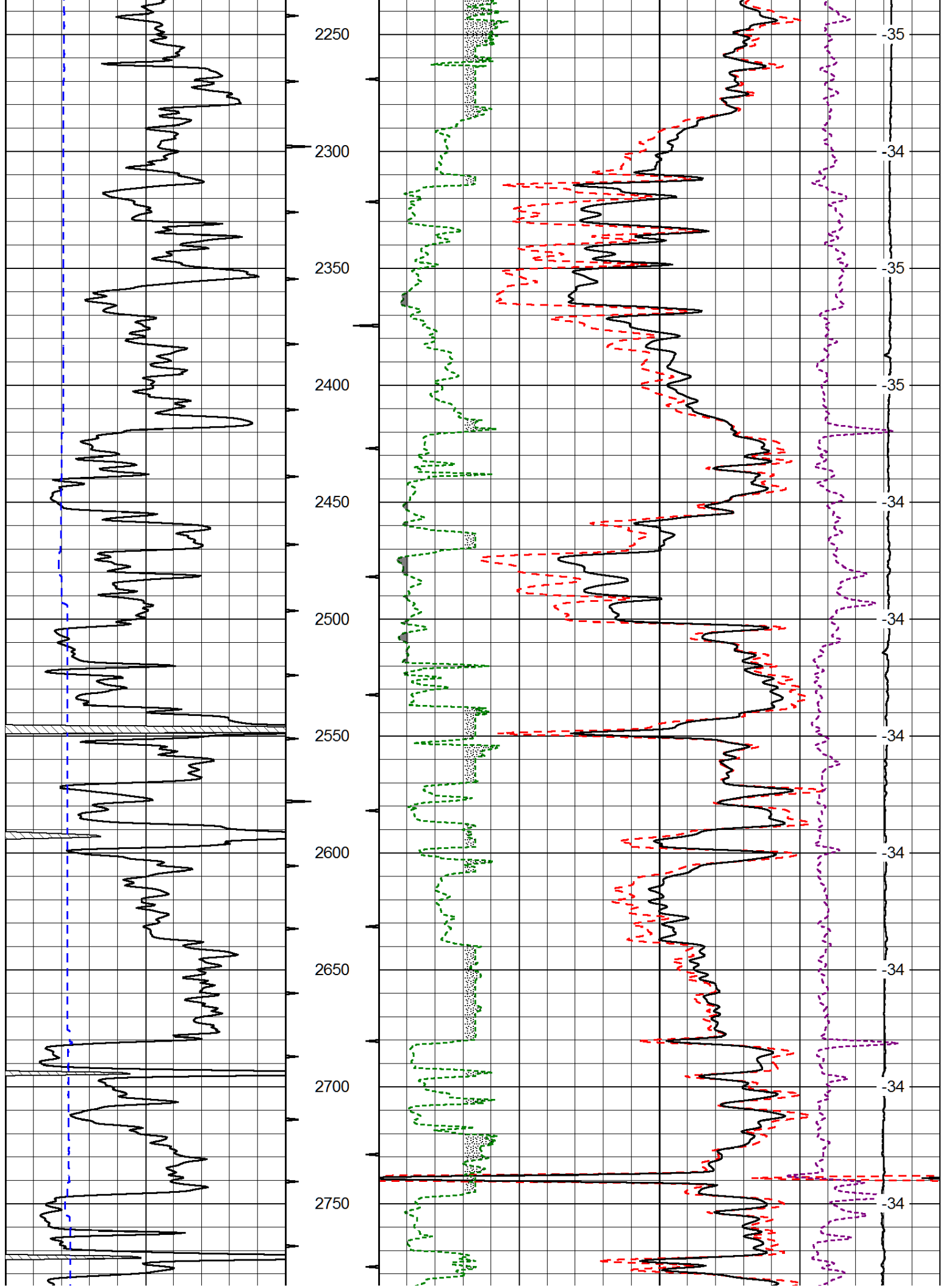
Winfield, KS:
11 1/4E to 201 Rd., 1S, 1W, 1/4S, E into

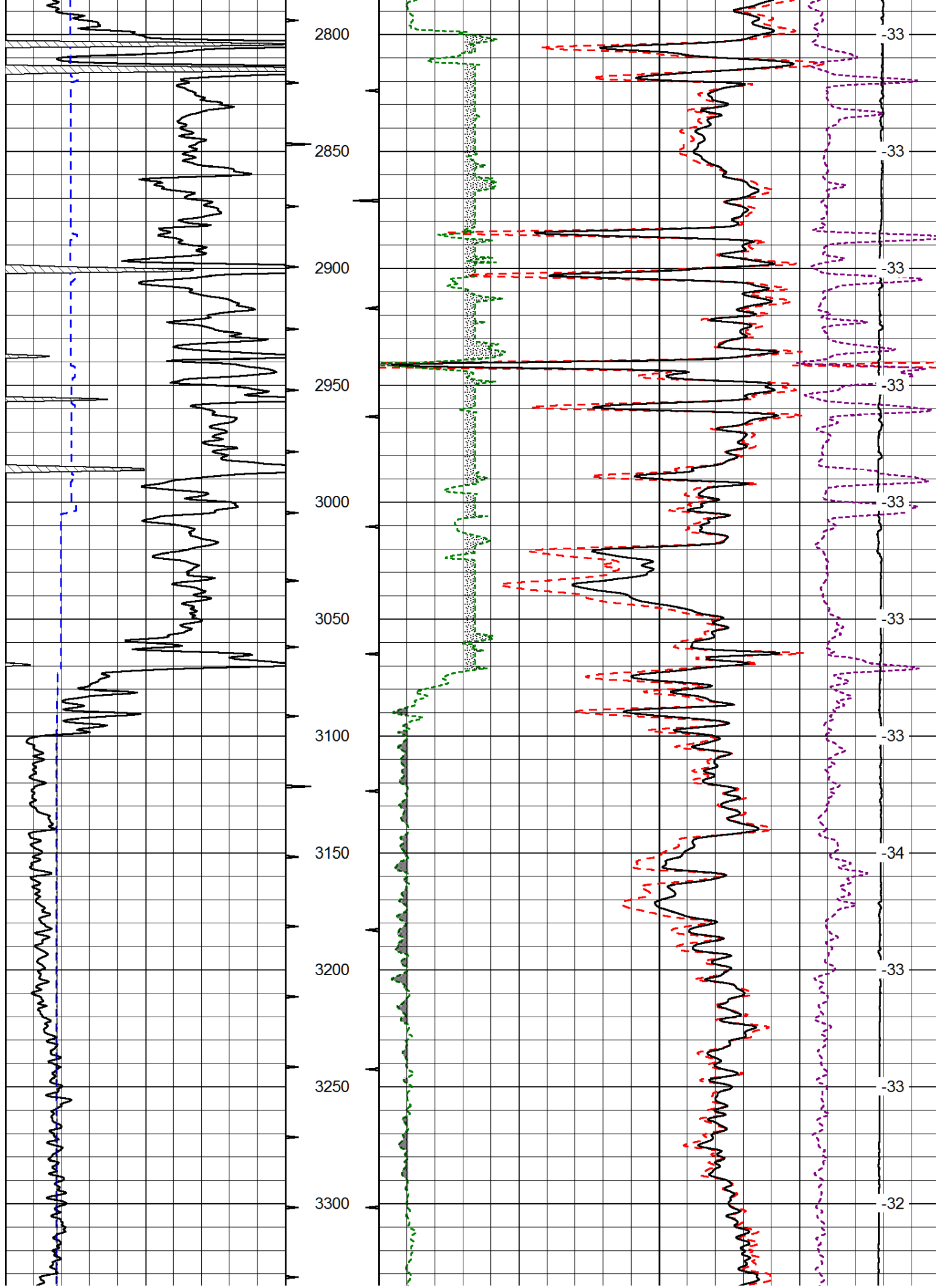
Database File: val_hd.db
 Dataset Pathname: dil/valmain
 Presentation Format: cdl
 Dataset Creation: Thu Jun 19 19:10:27 2014
 Charted by: Depth in Feet scaled 1:600

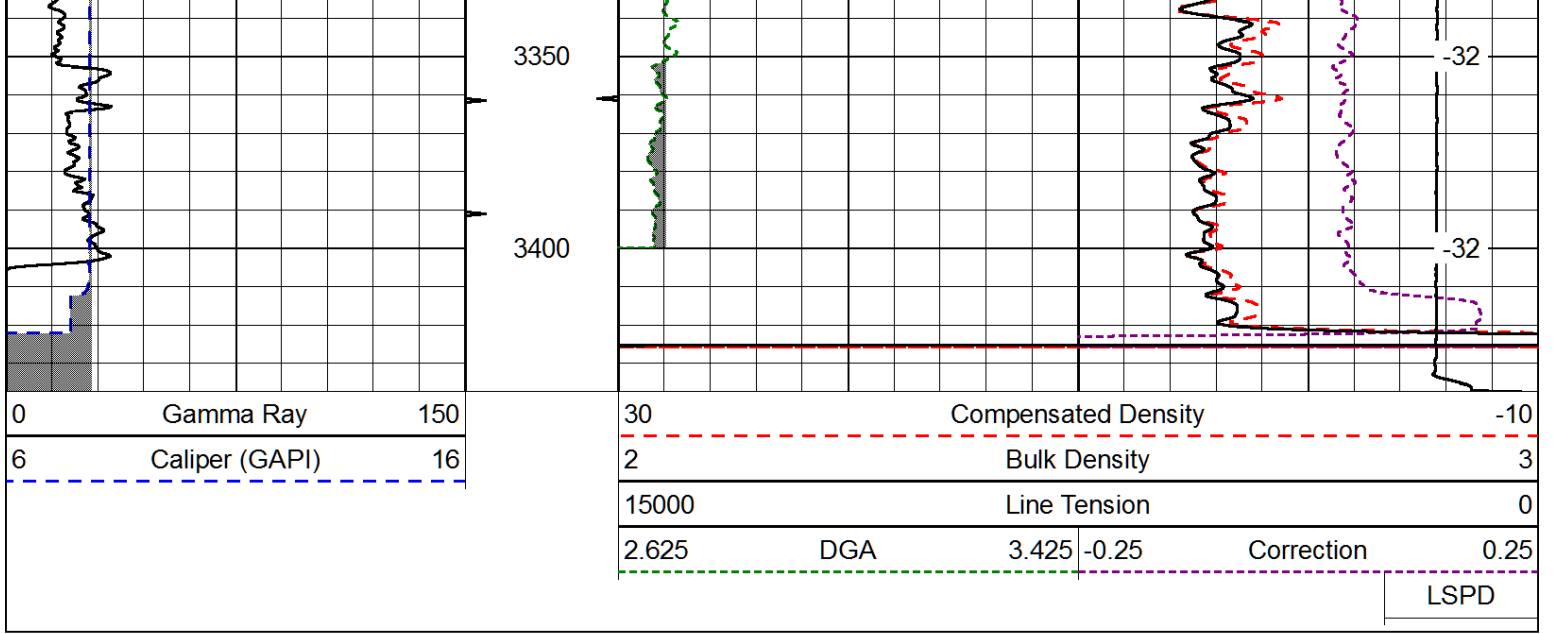
| | | |
|---|----------------|-----|
| 0 | Gamma Ray | 150 |
| 6 | Caliper (GAPI) | 16 |

| | | | |
|-------|---------------------|-------|------------|
| 30 | Compensated Density | | -10 |
| 2 | Bulk Density | | 3 |
| 15000 | Line Tension | | 0 |
| 2.625 | DGA | 3.425 | -0.25 |
| | | | Correction |
| | | | 0.25 |
| LSPD | | | |

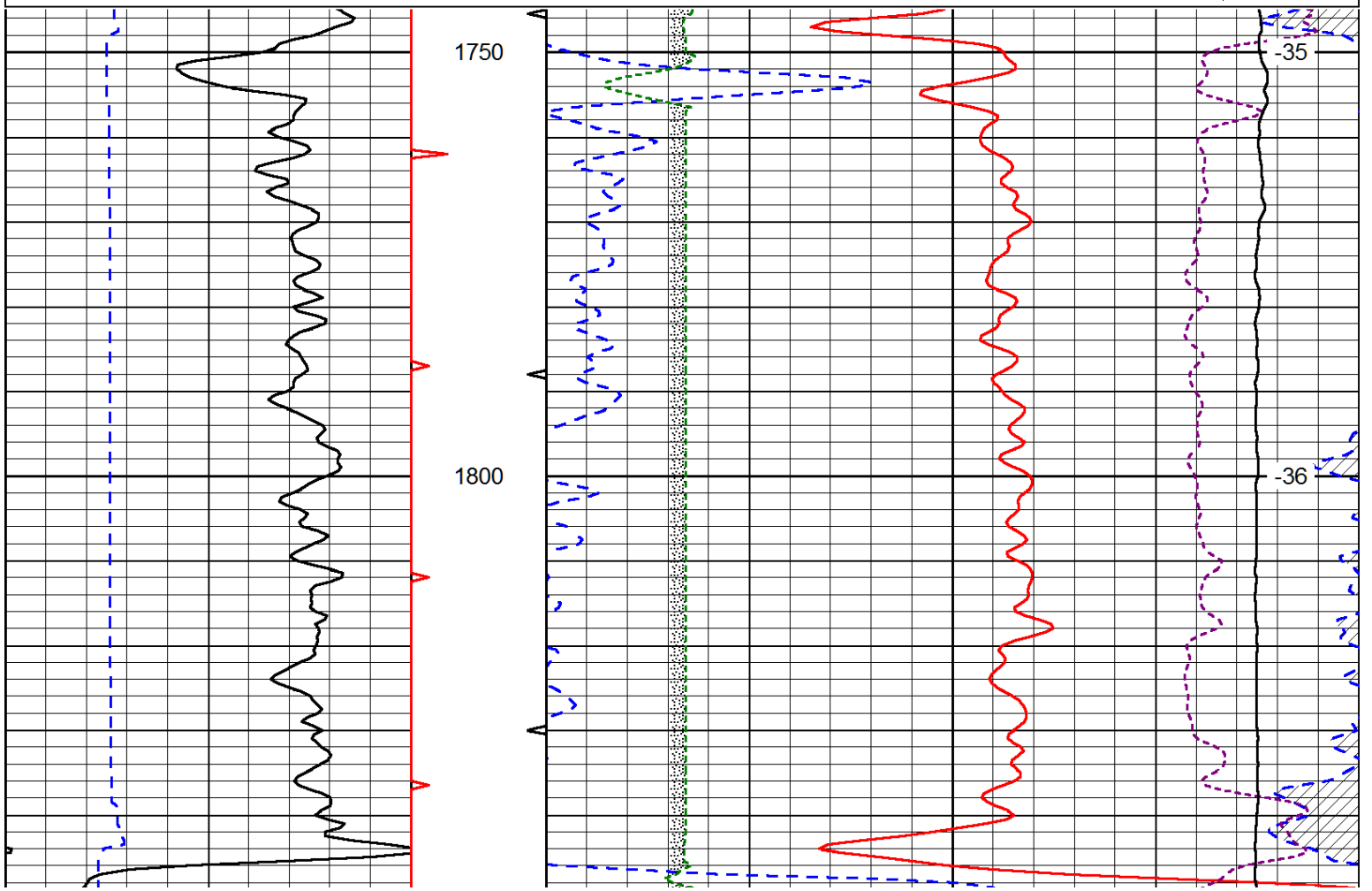
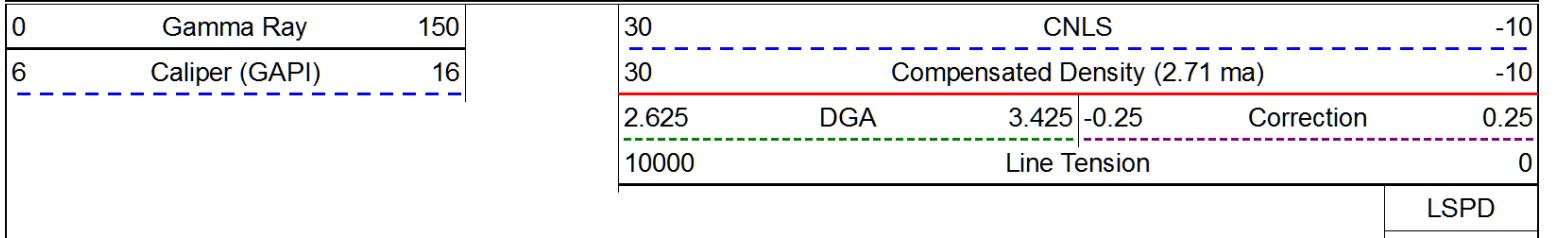


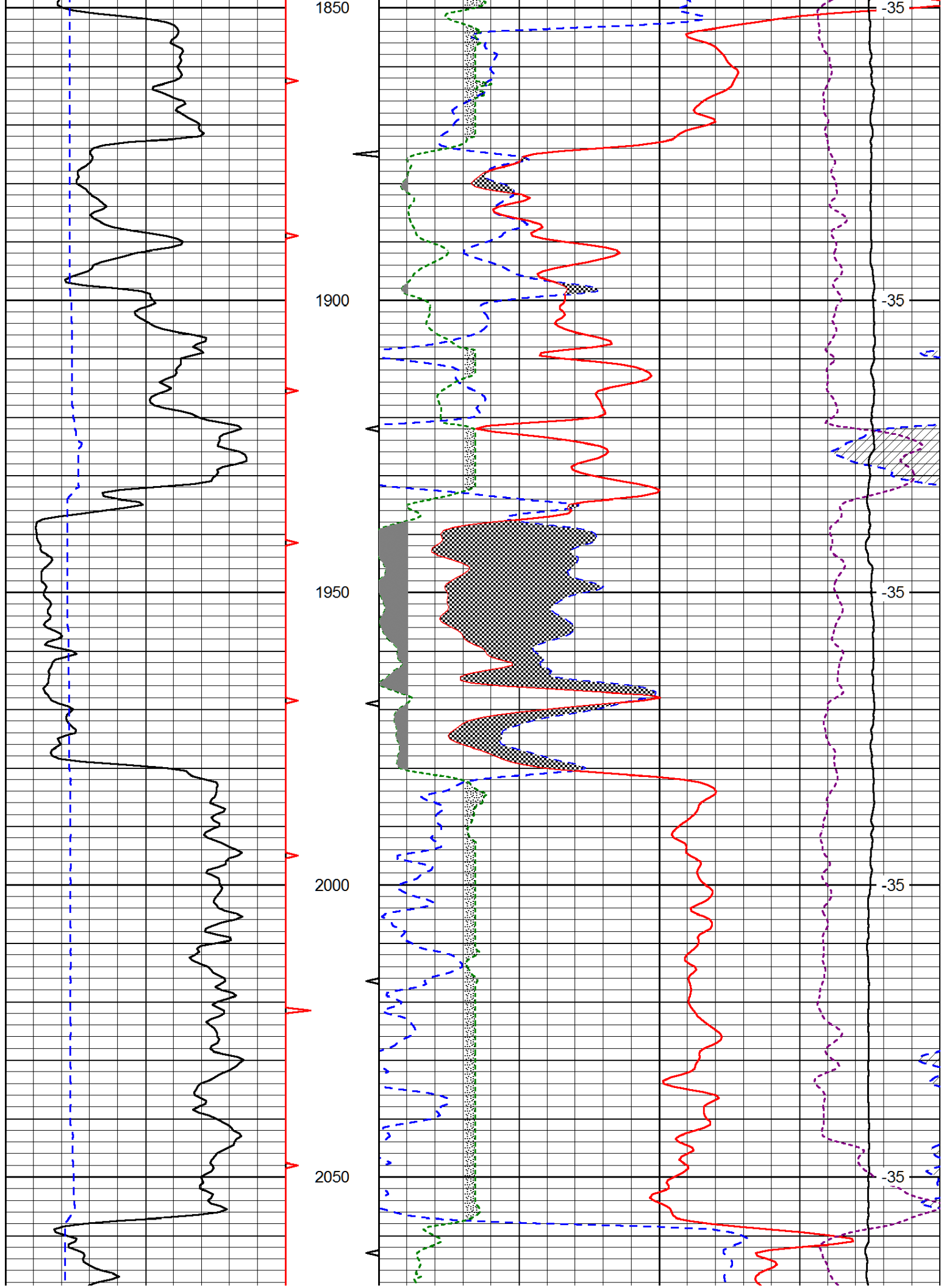


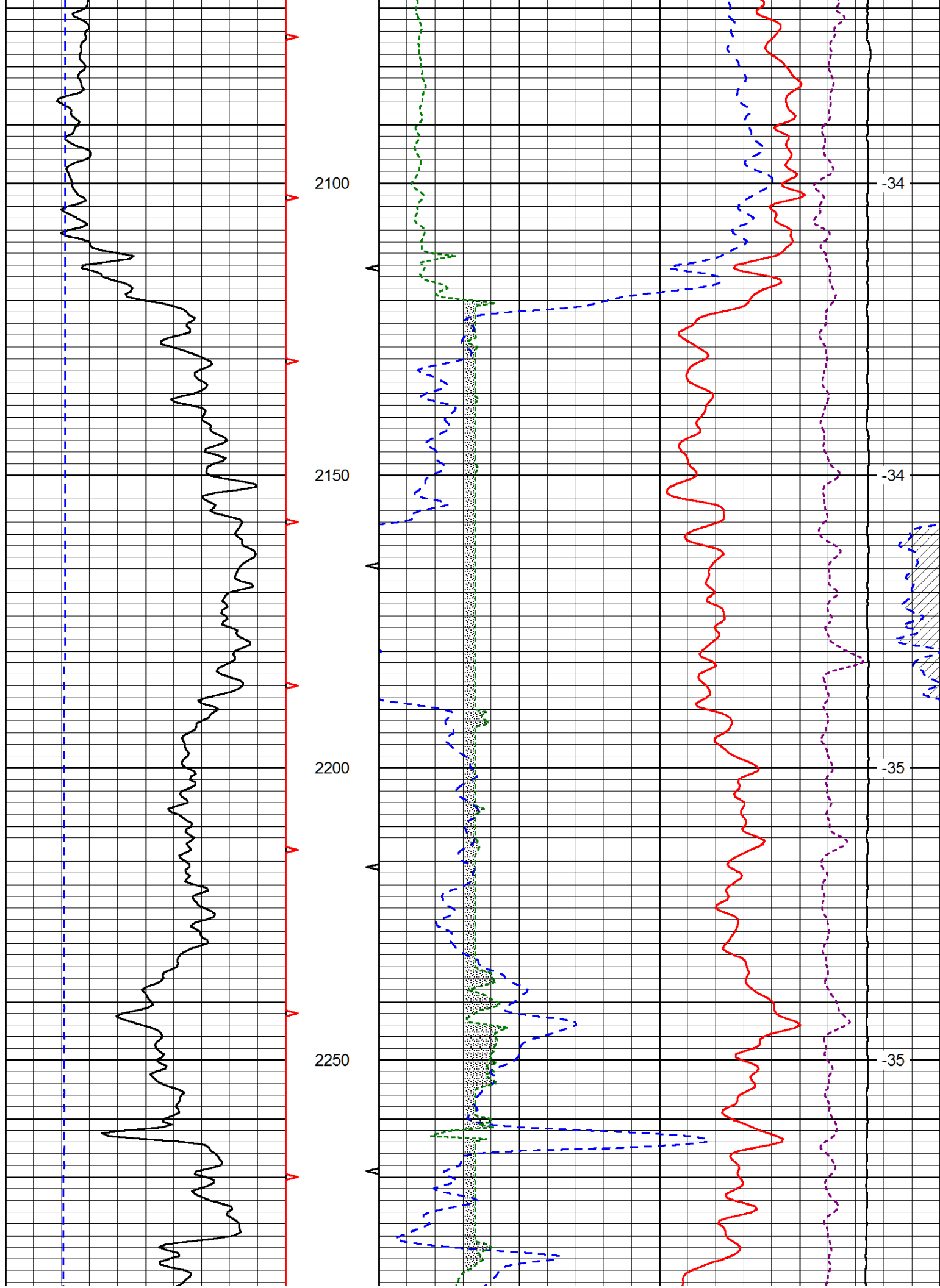


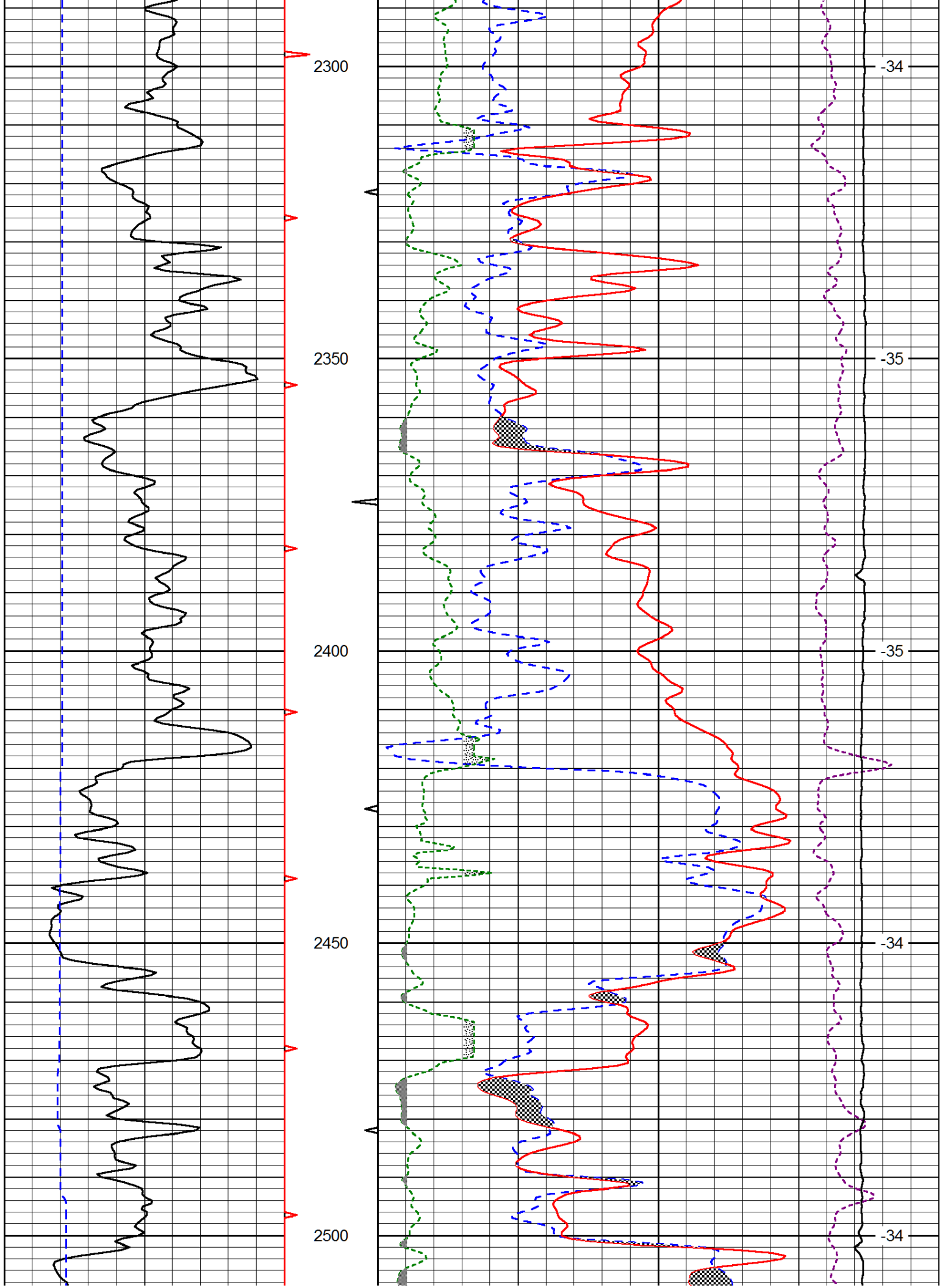


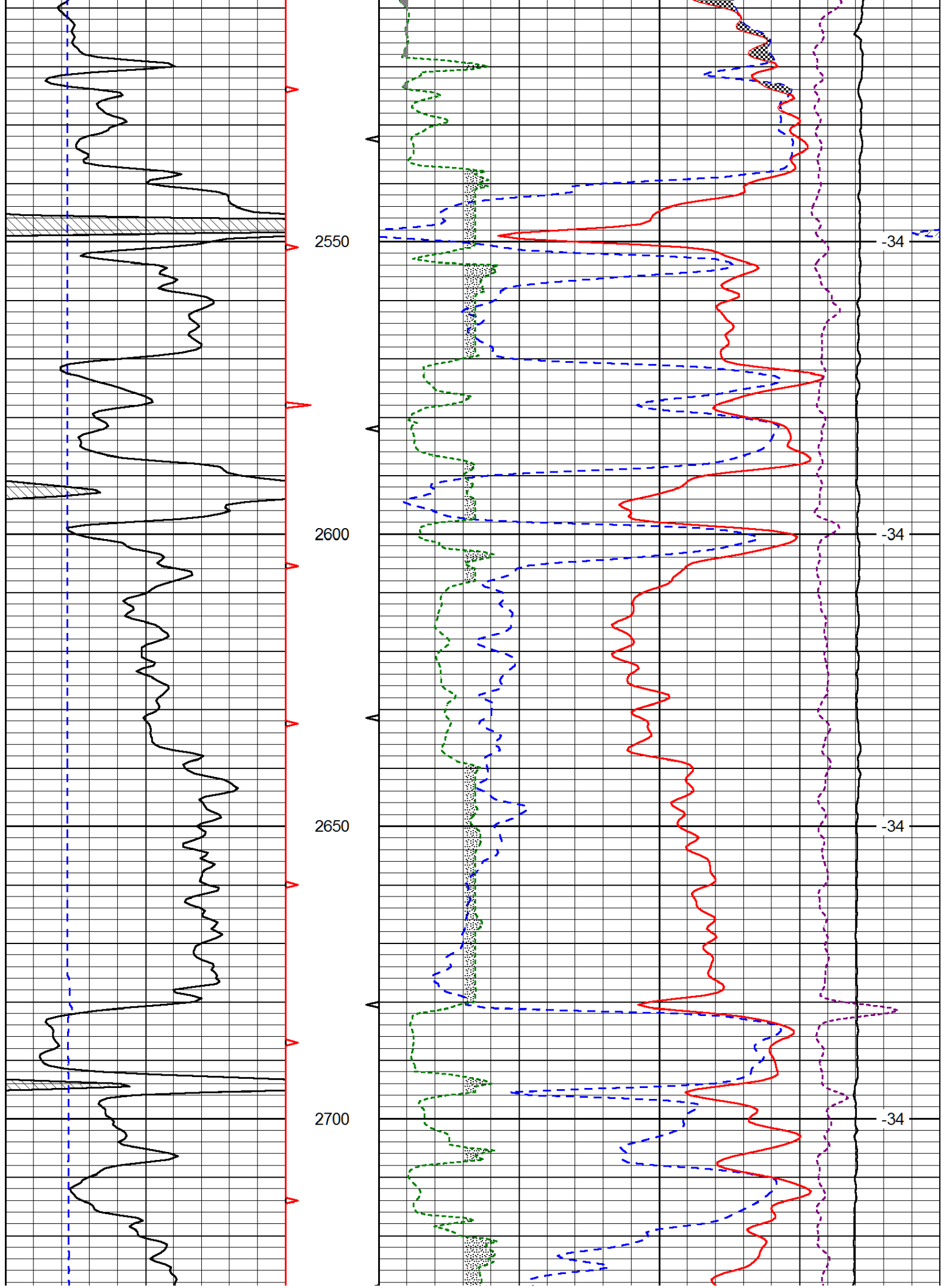
Database File: val_hd.db
 Dataset Pathname: dil/valmain
 Presentation Format: cndlspec
 Dataset Creation: Thu Jun 19 19:10:27 2014
 Charted by: Depth in Feet scaled 1:240

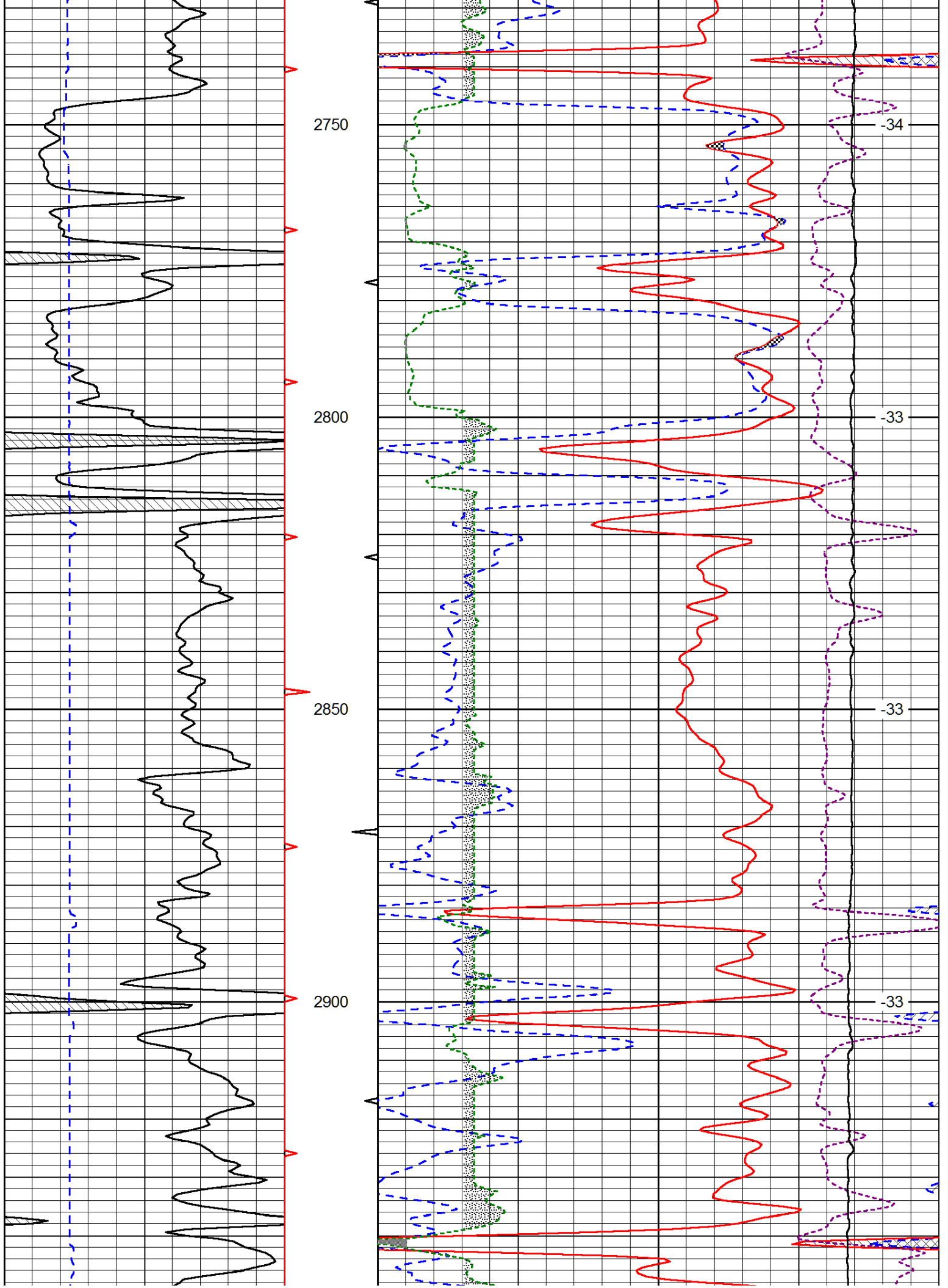


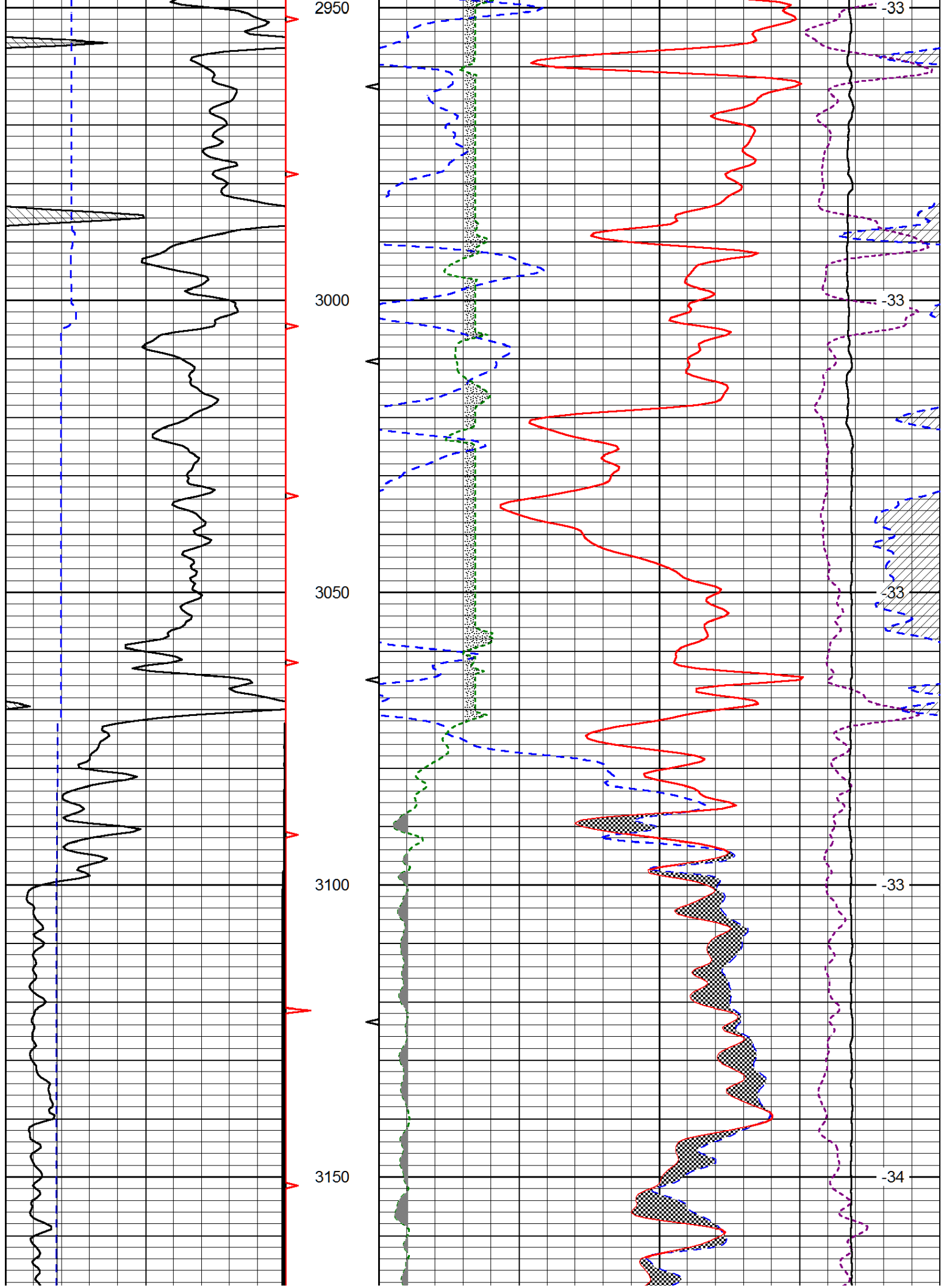


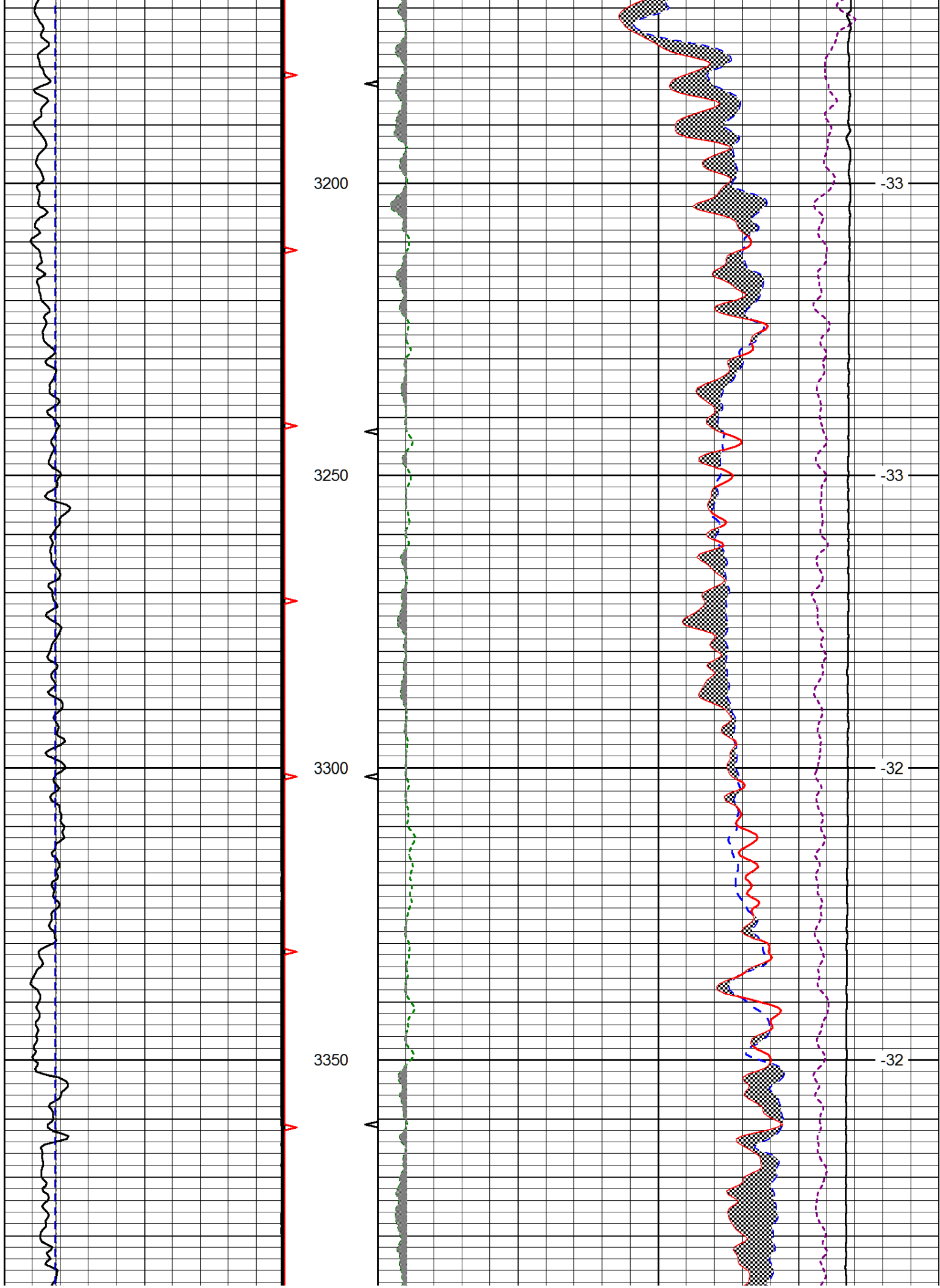


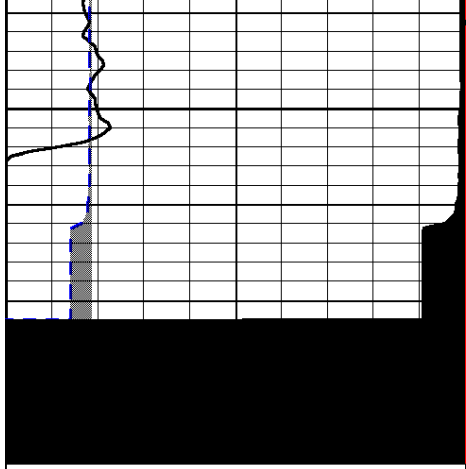




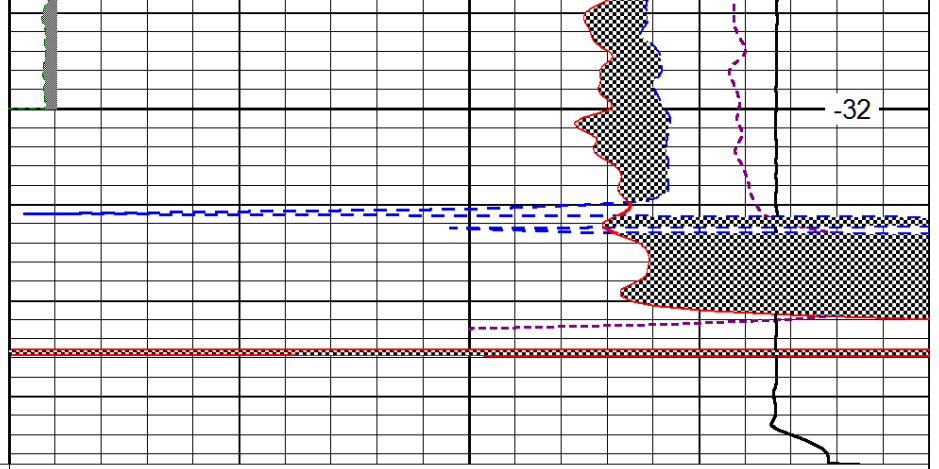








3400



-32

| | | |
|---|----------------|-----|
| 0 | Gamma Ray | 150 |
| 6 | Caliper (GAPI) | 16 |

| | | | |
|-------|-------------------------------|-------|------------|
| 30 | CNLS | | -10 |
| 30 | Compensated Density (2.71 ma) | | -10 |
| 2.625 | DGA | 3.425 | -0.25 |
| | | | Correction |
| 10000 | Line Tension | | 0 |

LSPD