



Pioneer Energy Services

# Dual Induction Log

API No.	15-035-24586-00-00	
Company	Val Energy, Inc.	
Well	Lawrence #1-32	
Field	Wilson	
County	Cowley	State
Location	N2 SW NW NW 835' FNL / 330' FWL	
	Kansas	
Sec: 32	Twp: 32S	Rge: 6E
Permanent Datum	Ground Level	Elevation 1298
Log Measured From	Kelly Bushing	10 Ft. Above Perm. Datum
Drilling Measured From	Kelly Bushing	
		Other Services CNL / CDL MEL
		Elevation K.B. 1308 D.F. G.L. 1298

Date	6/19/2014
Run Number	One
Depth Driller	3434
Depth Logger	3432
Bottom Logged Interval	3431
Top Log Interval	250
Casing Driller	8.625 @ 308
Casing Logger	302
Bit Size	7.875
Type Fluid in Hole	Chemical
Salinity, ppm CL	600
Density / Viscosity	9.4   50
pH / Fluid Loss	10.5   8.8
Source of Sample	Flowline
Rm @ Meas. Temp	1.70 @ 80
Rmf @ Meas. Temp	1.28 @ 80
Rmc @ Meas. Temp	2.30 @ 80
Source of Rmf / Rmc	Charts
Rm @ BHT	1.23 @ 110
Operating Rig Time	4 Hours
Max Rec. Temp. F	110
Equipment Number	17
Location	Hays
Recorded By	R. Barnhart
Witnessed By	Harley Sayles

<<< Fold Here >>>

All interpretations are opinions based on inferences from electrical or other measurements and we cannot and do not guarantee the accuracy or correctness of any interpretation, and we shall not, except in the case of gross or willful negligence on our part, be liable or responsible for any loss, costs, damages, or expenses incurred or sustained by anyone resulting from any interpretation made by any of our officers, agents or employees. These interpretations are also subject to our general terms and conditions set out in our current Price Schedule.

### Comments

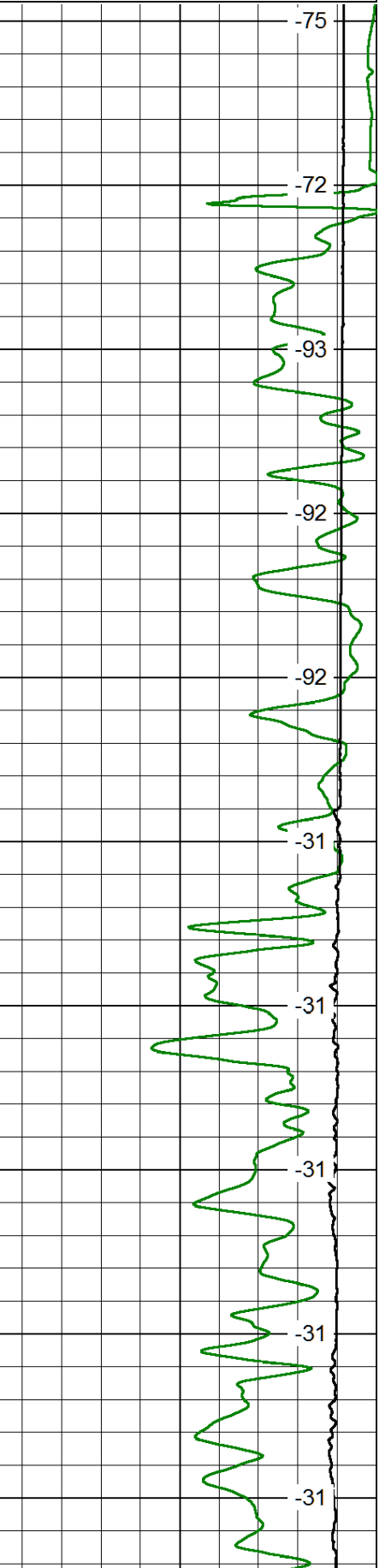
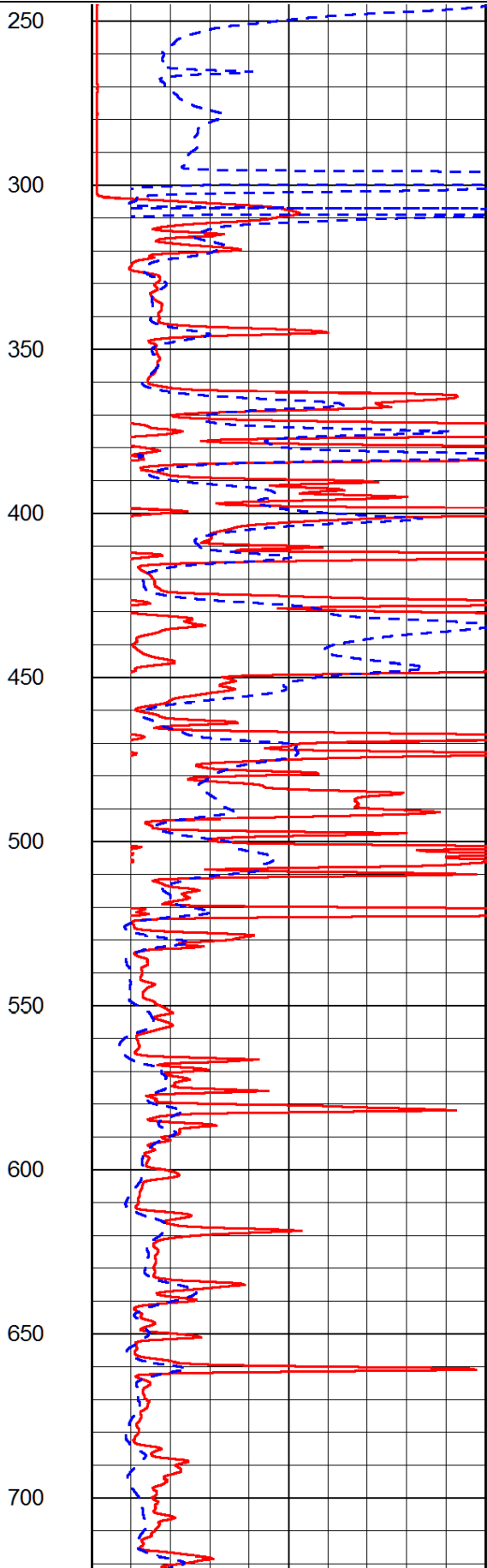
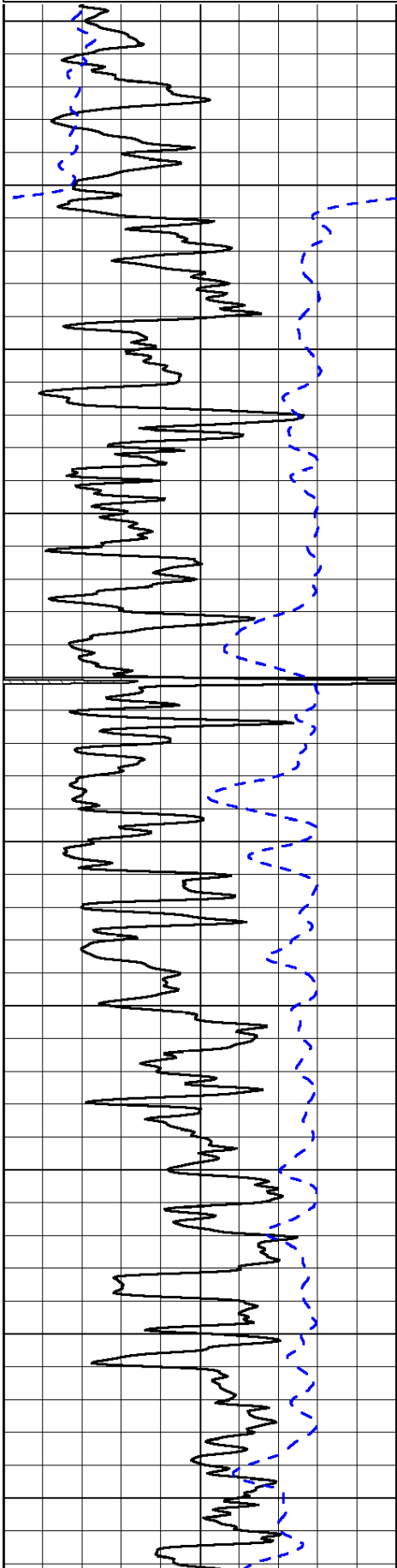
Thank you for using Log-Tech, Inc.  
 (785) 625-3858  
 Winfield, KS:  
 11 1/4E to 201 Rd., 1S, 1W, 1/4S, E into

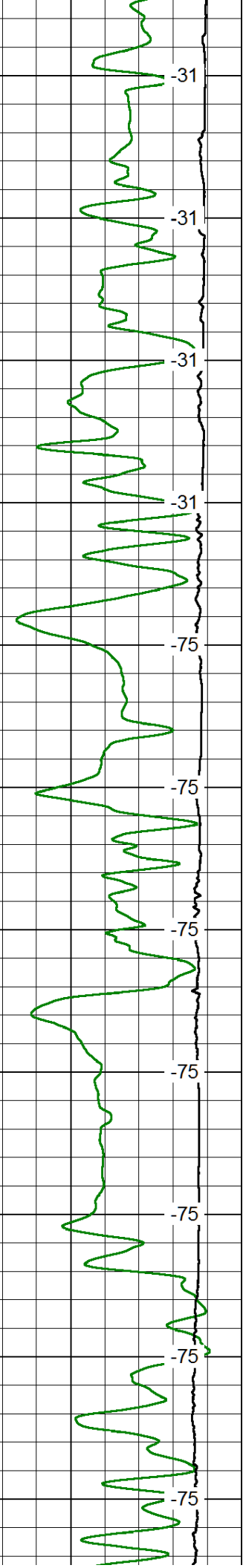
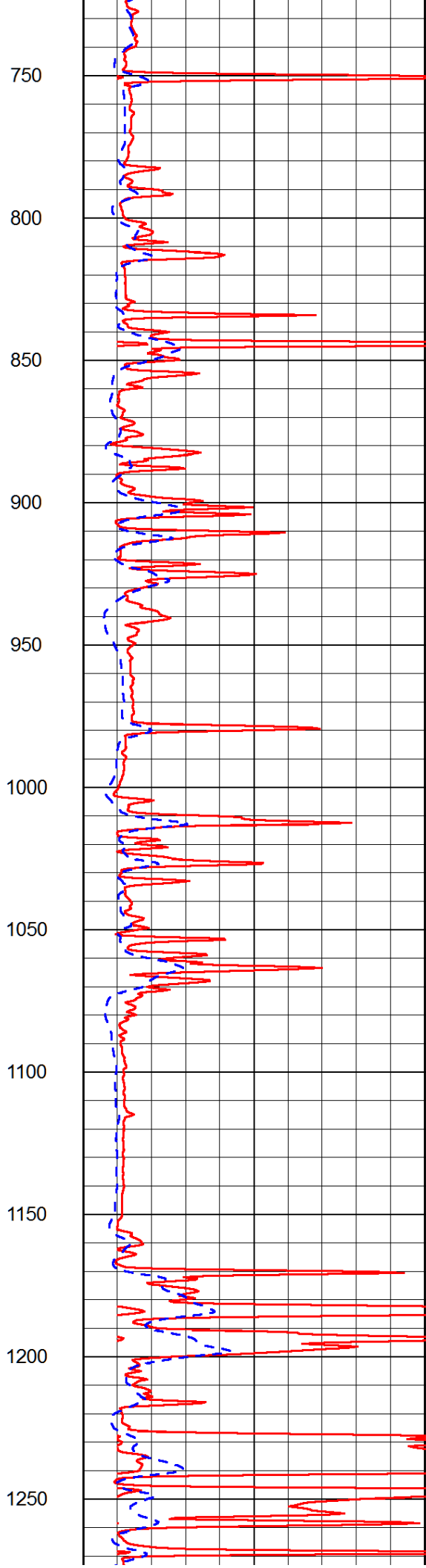
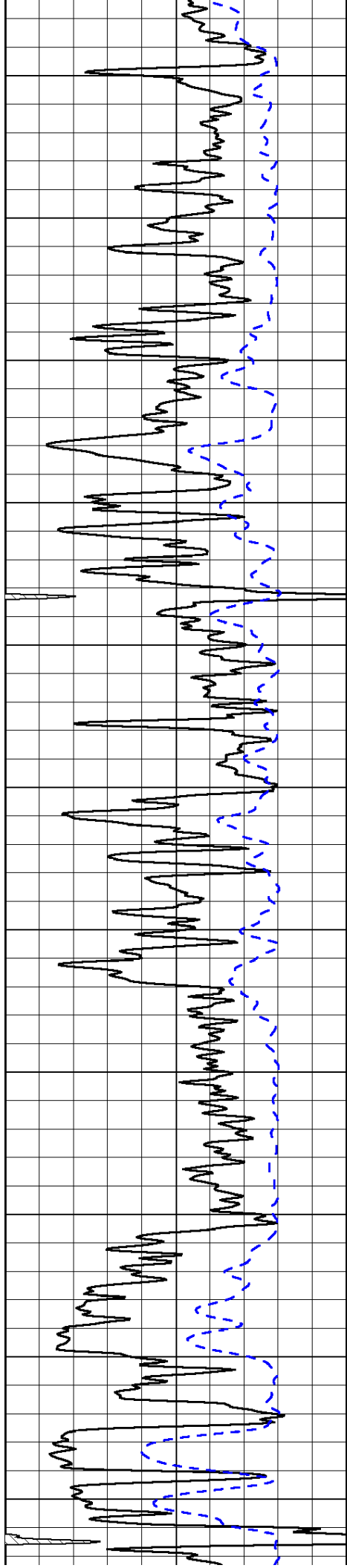
Database File: val\_hd.db  
 Dataset Pathname: dil/valmain  
 Presentation Format: dil2in  
 Dataset Creation: Thu Jun 19 19:10:27 2014  
 Charted by: Depth in Feet scaled 1:600

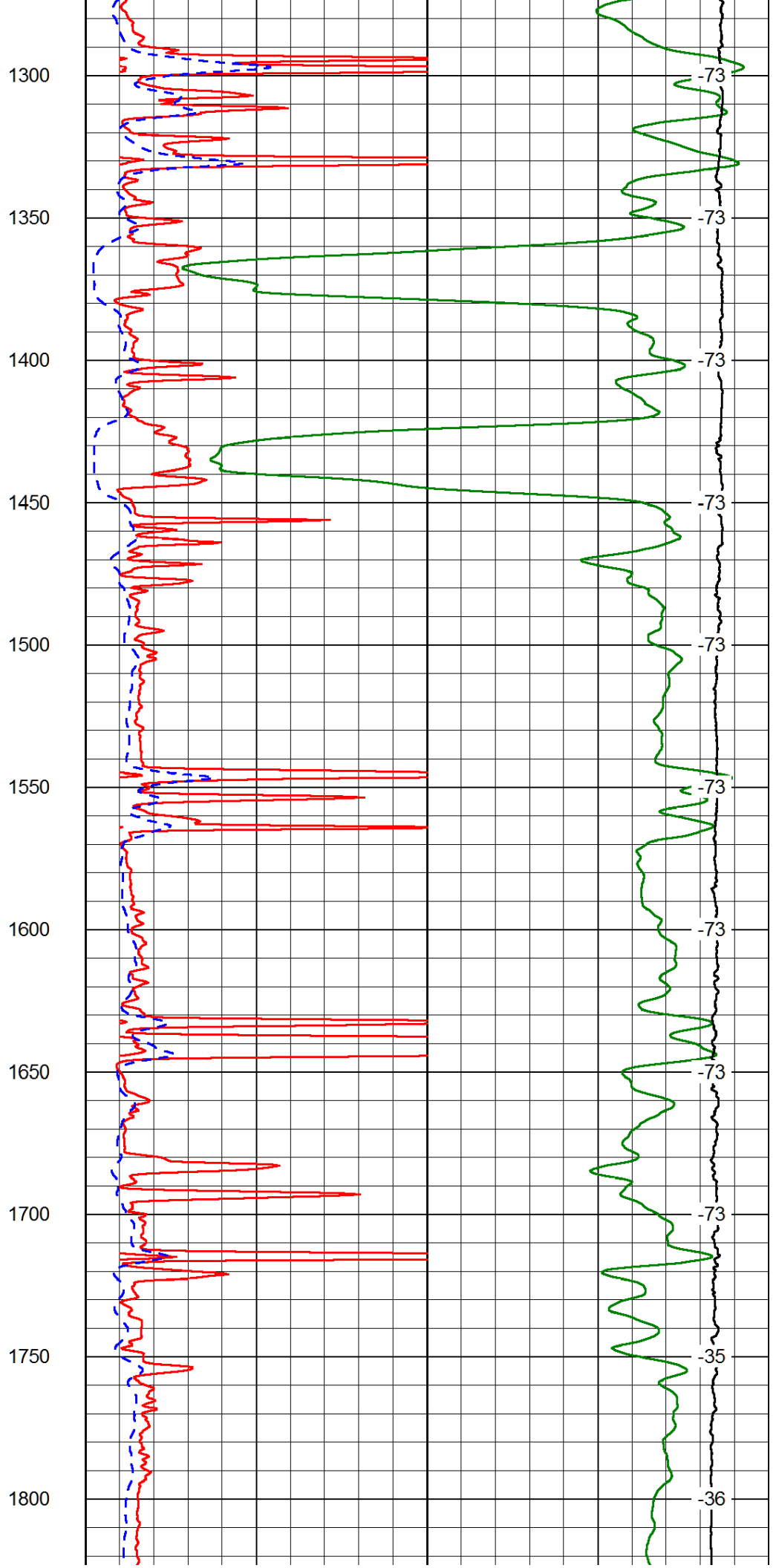
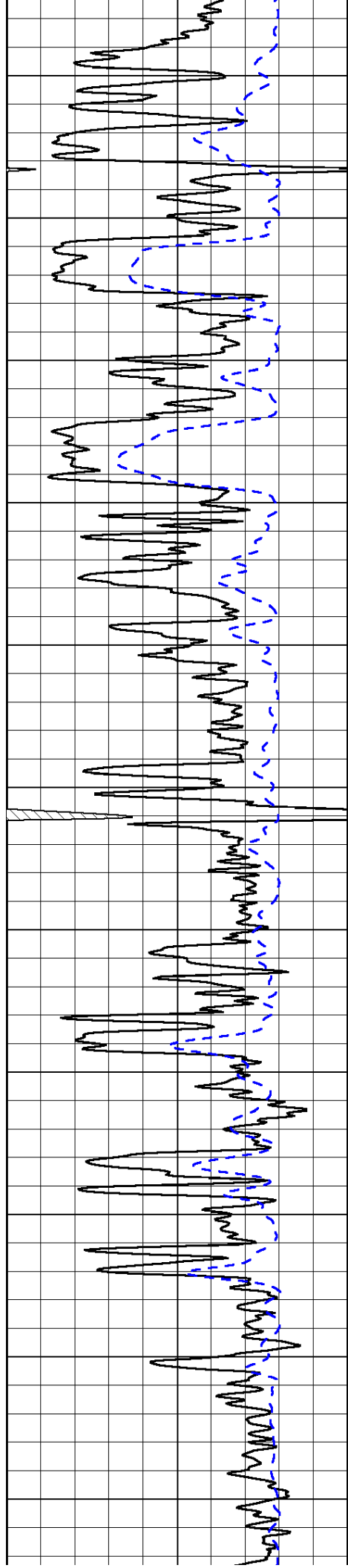
0 Gamma Ray 150  
-200 SP (mV) 0

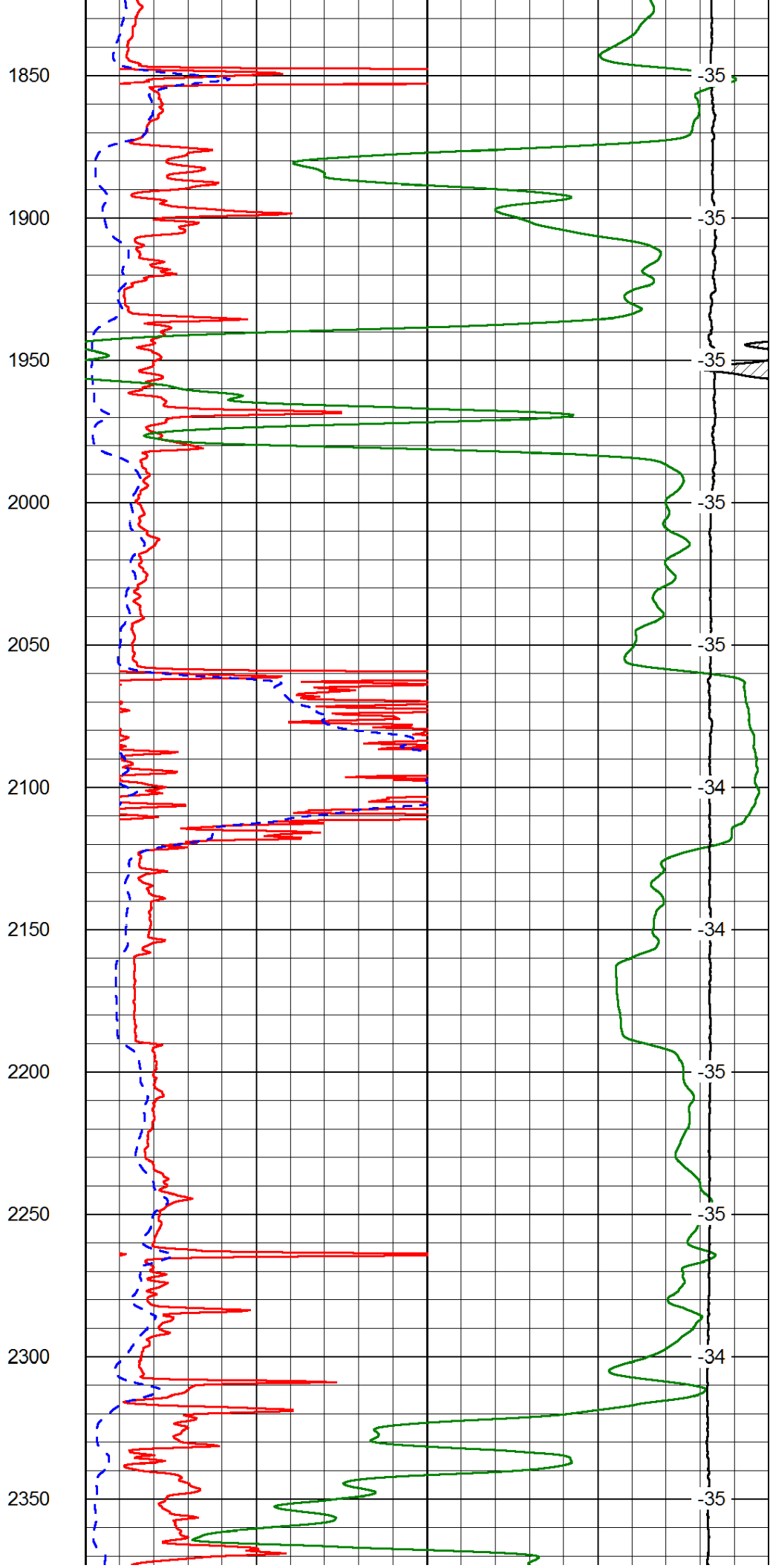
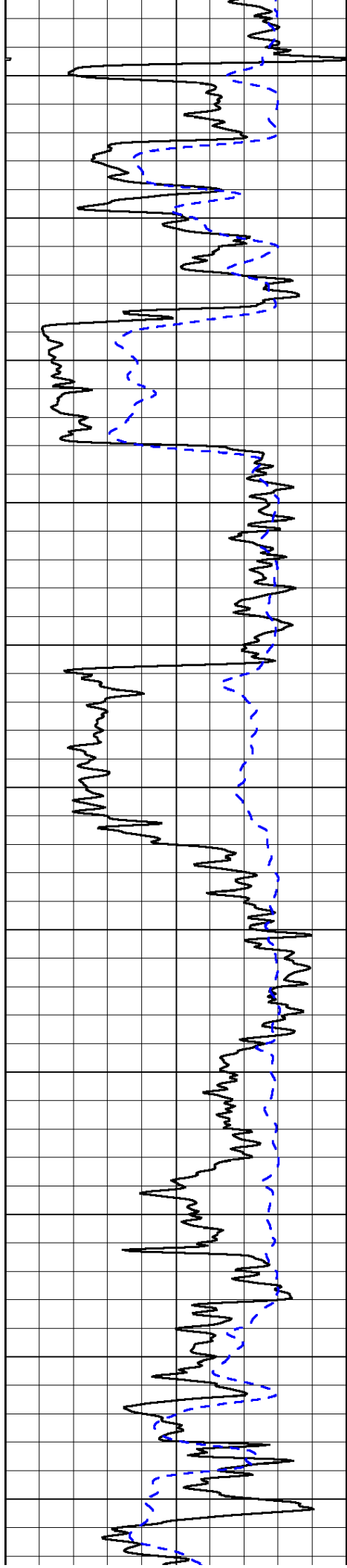
0 Shallow Resistivity 50  
0 Deep Resistivity 50  
1000 Conductivity 0  
15000 Line Tension 0  
50 Shallow Resistivity 500  
50 Deep Resistivity 500

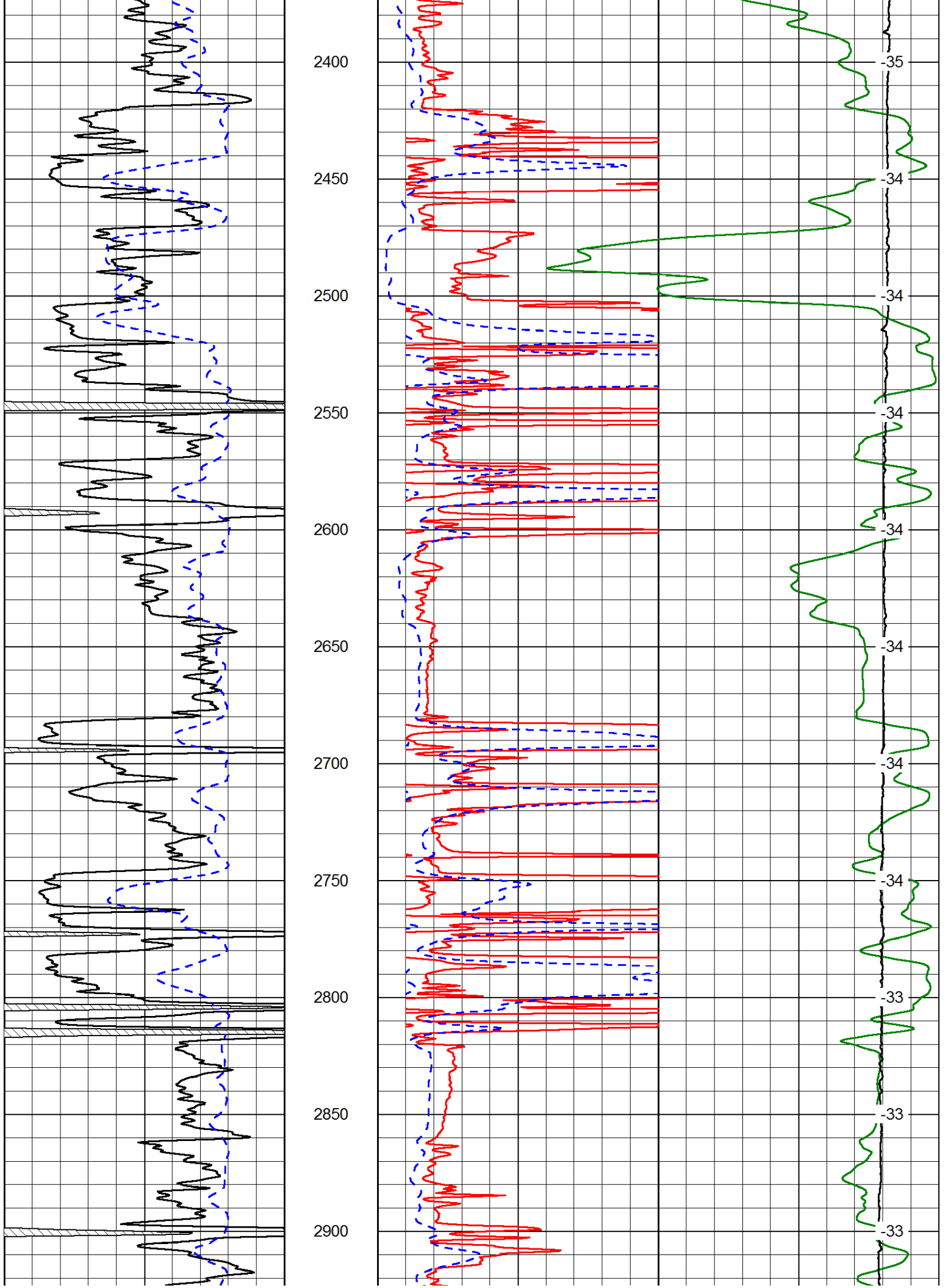
LSPD

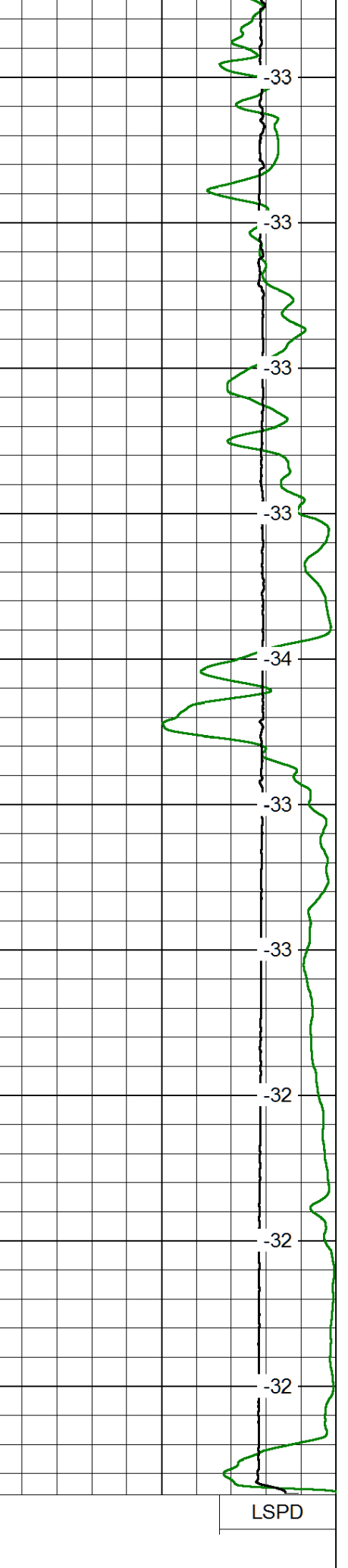
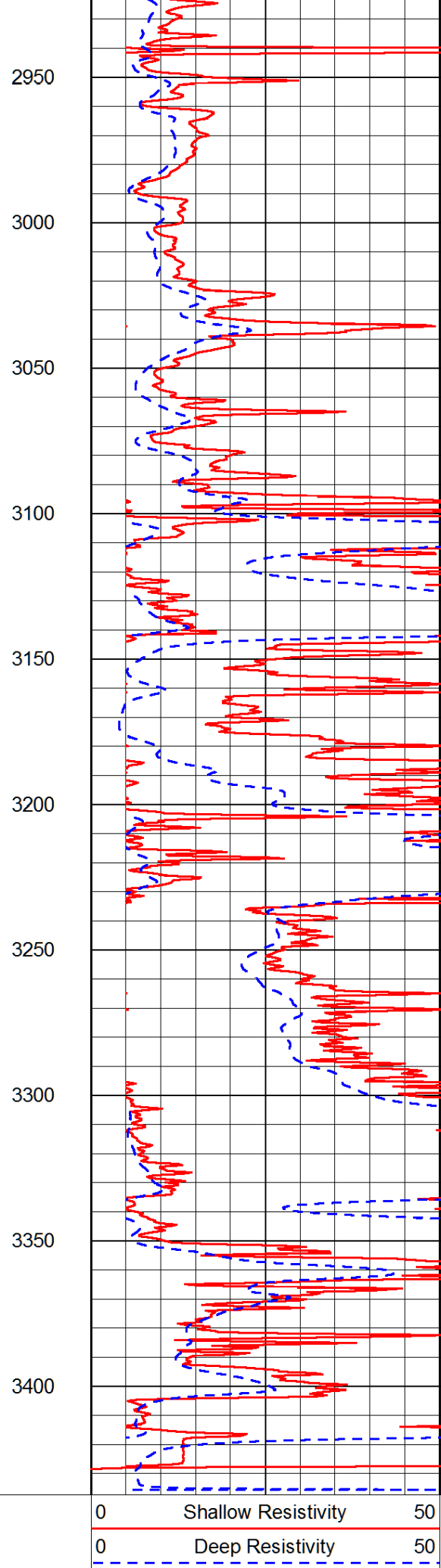
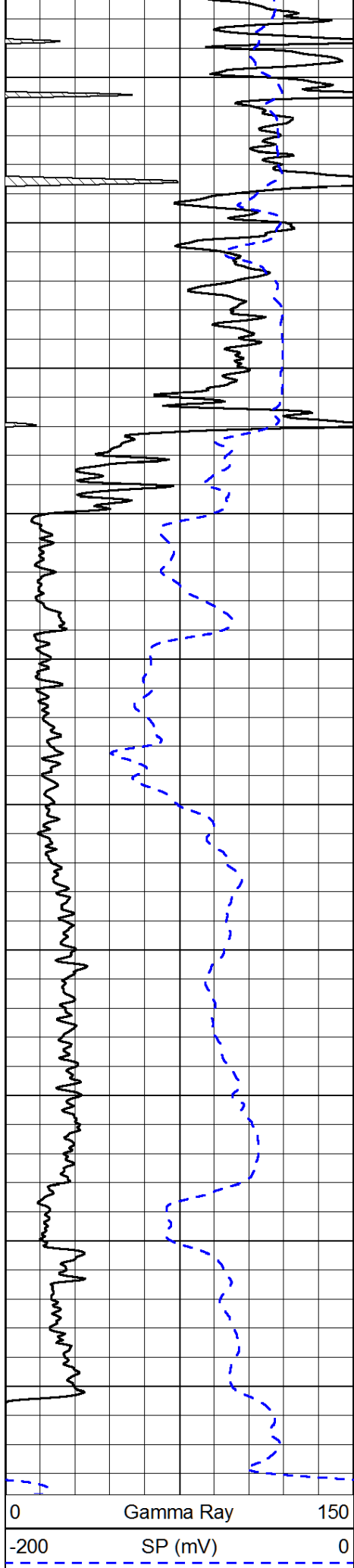












0 Gamma Ray 150  
-200 SP (mV) 0

0 Shallow Resistivity 50  
0 Deep Resistivity 50

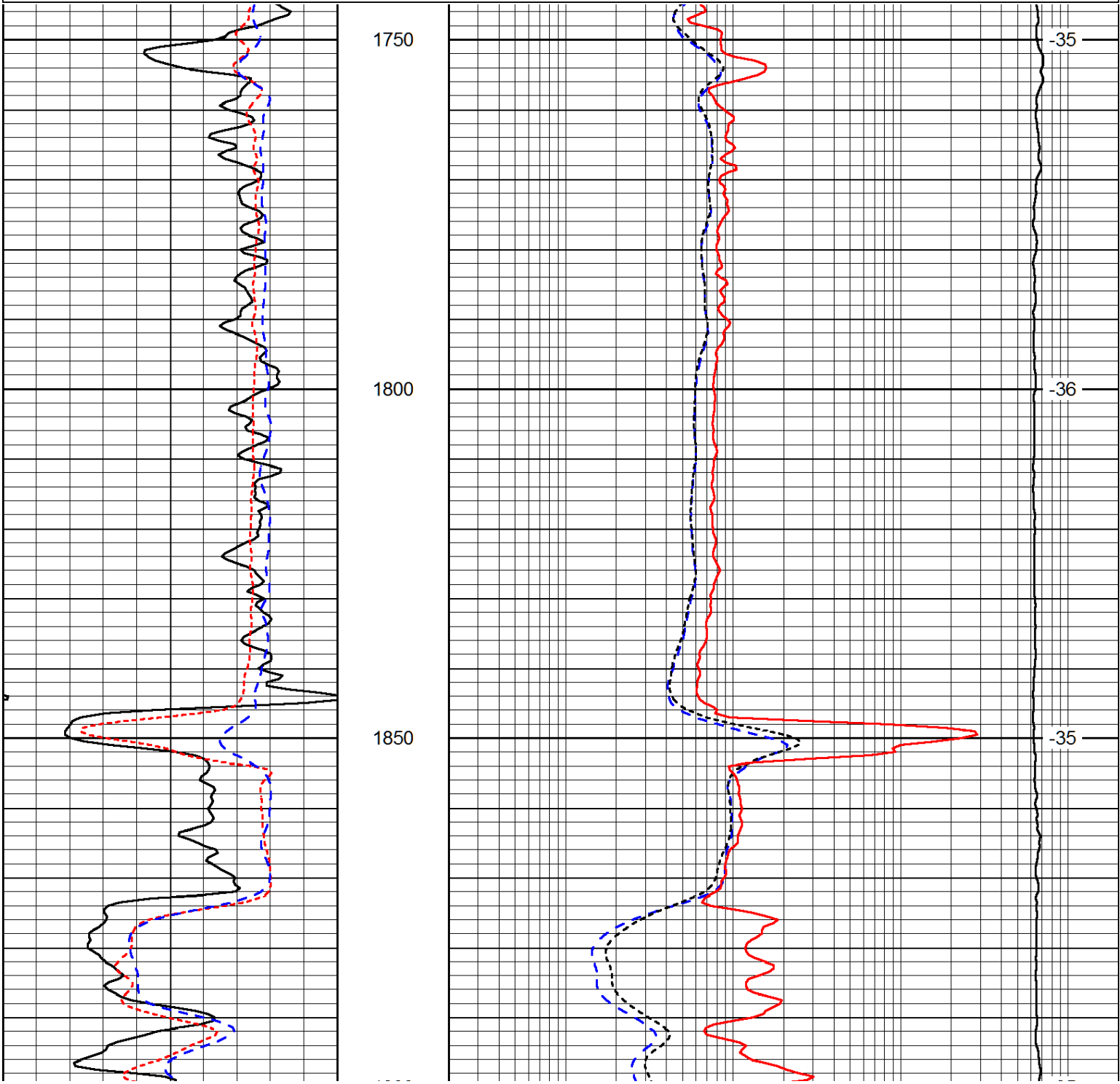
LSPD  
1000 Conductivity 0

15000	Line Tension	0
50	Shallow Resistivity	500
50	Deep Resistivity	500

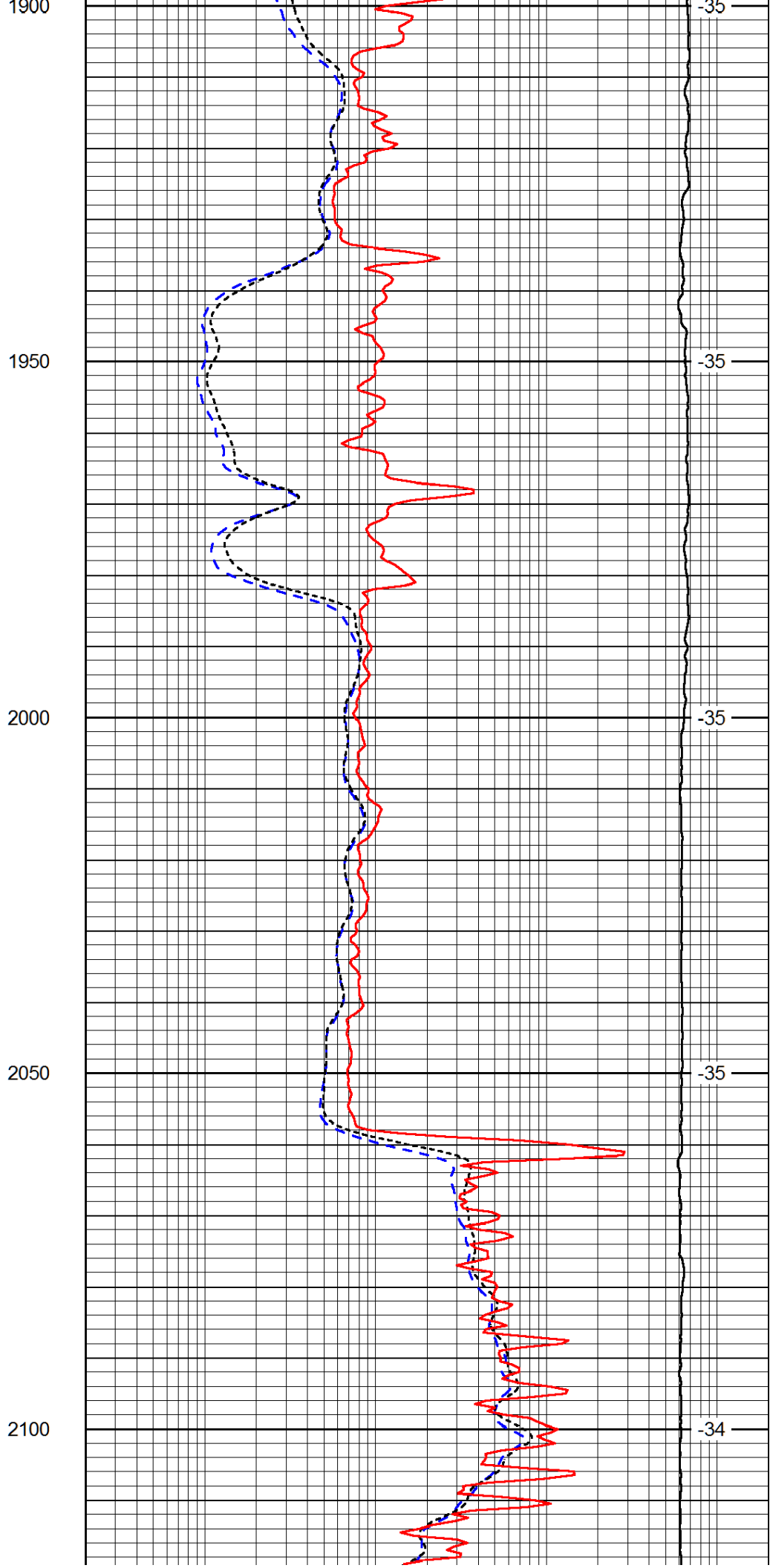
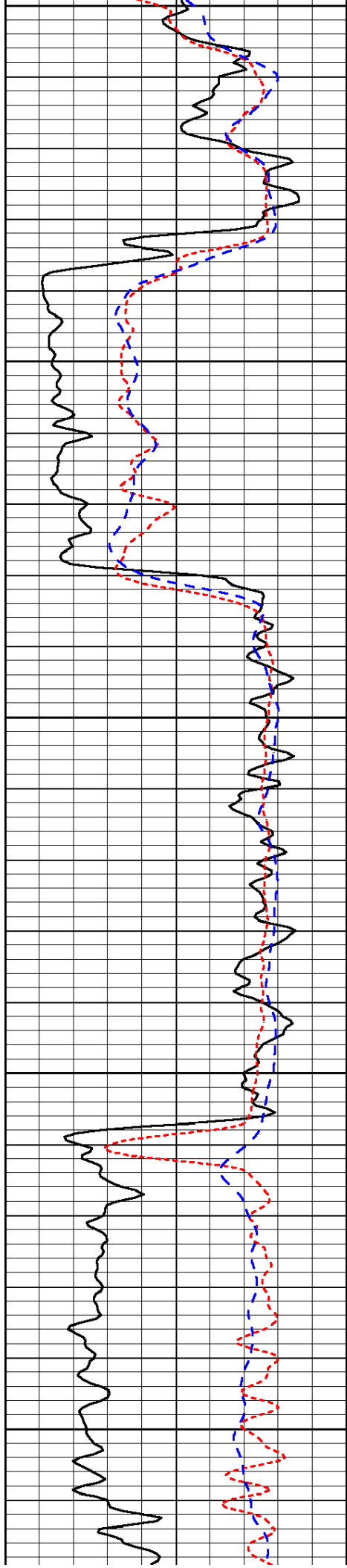
Database File: val\_hd.db  
 Dataset Pathname: dil/valmain  
 Presentation Format: dil  
 Dataset Creation: Thu Jun 19 19:10:27 2014  
 Charted by: Depth in Feet scaled 1:240

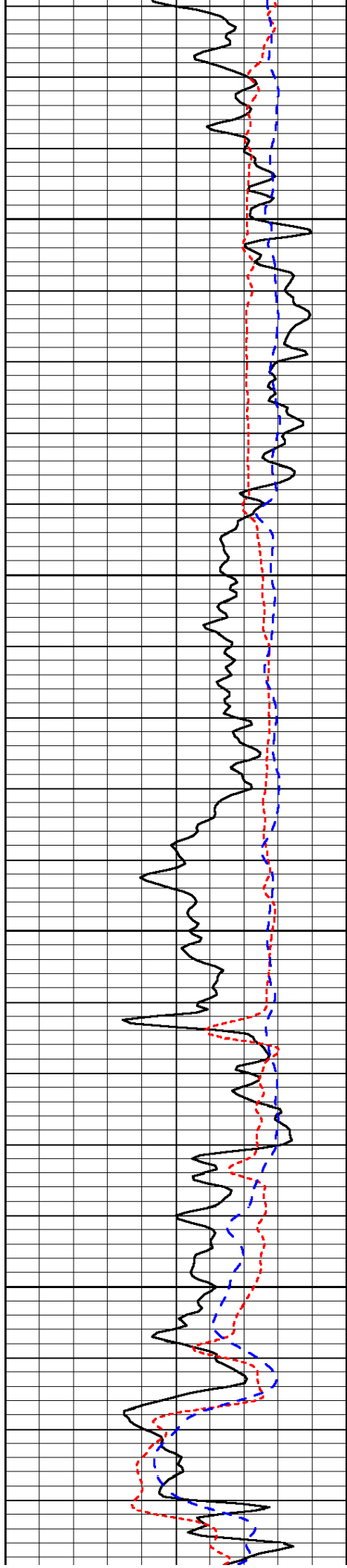
0	Gamma Ray	150	0.2	Deep Resistivity	2000
-160	RXO/RT	40	0.2	Medium Resistivity	2000
-200	SP (mV)	0	0.2	Shallow Resistivity	2000
			10000	Line Tension	0

LSPD







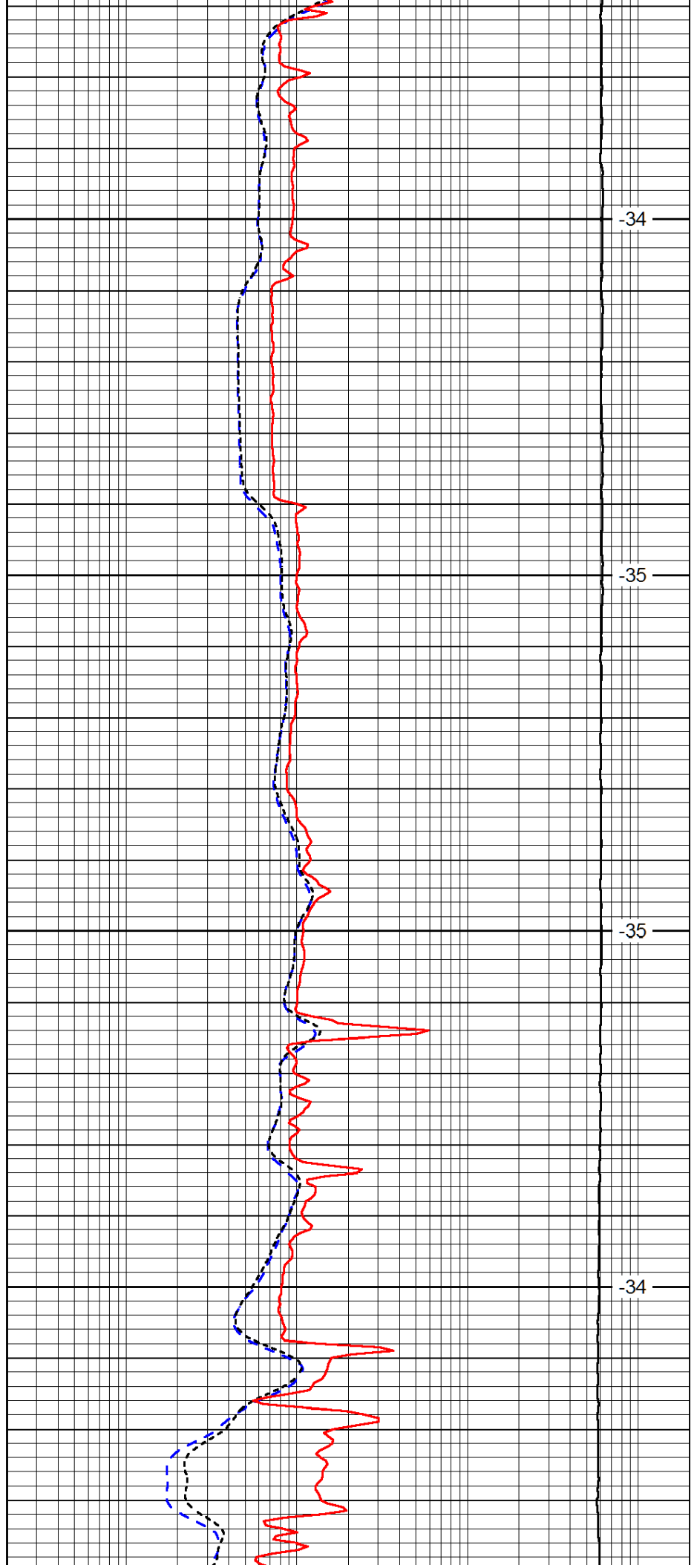


2150

2200

2250

2300

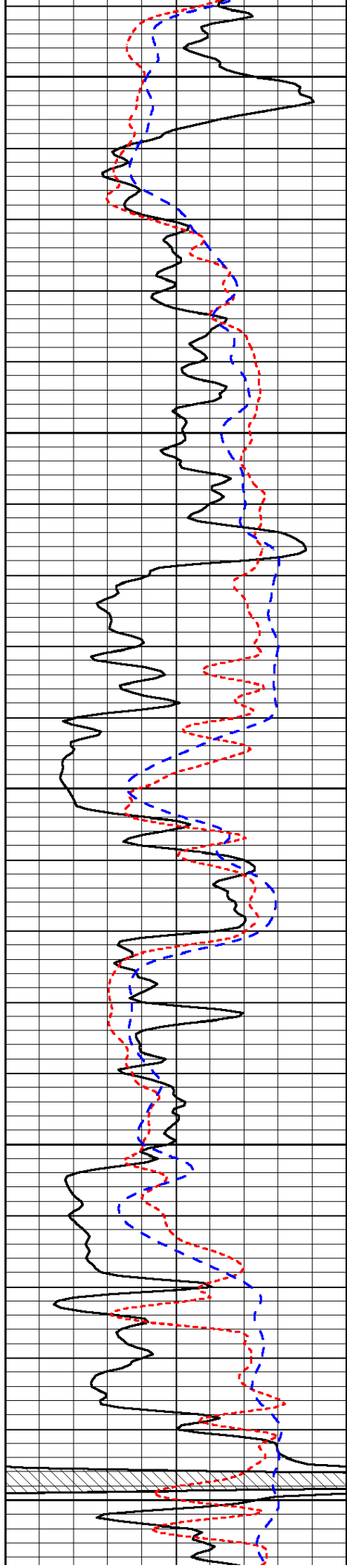


-34

-35

-35

-34



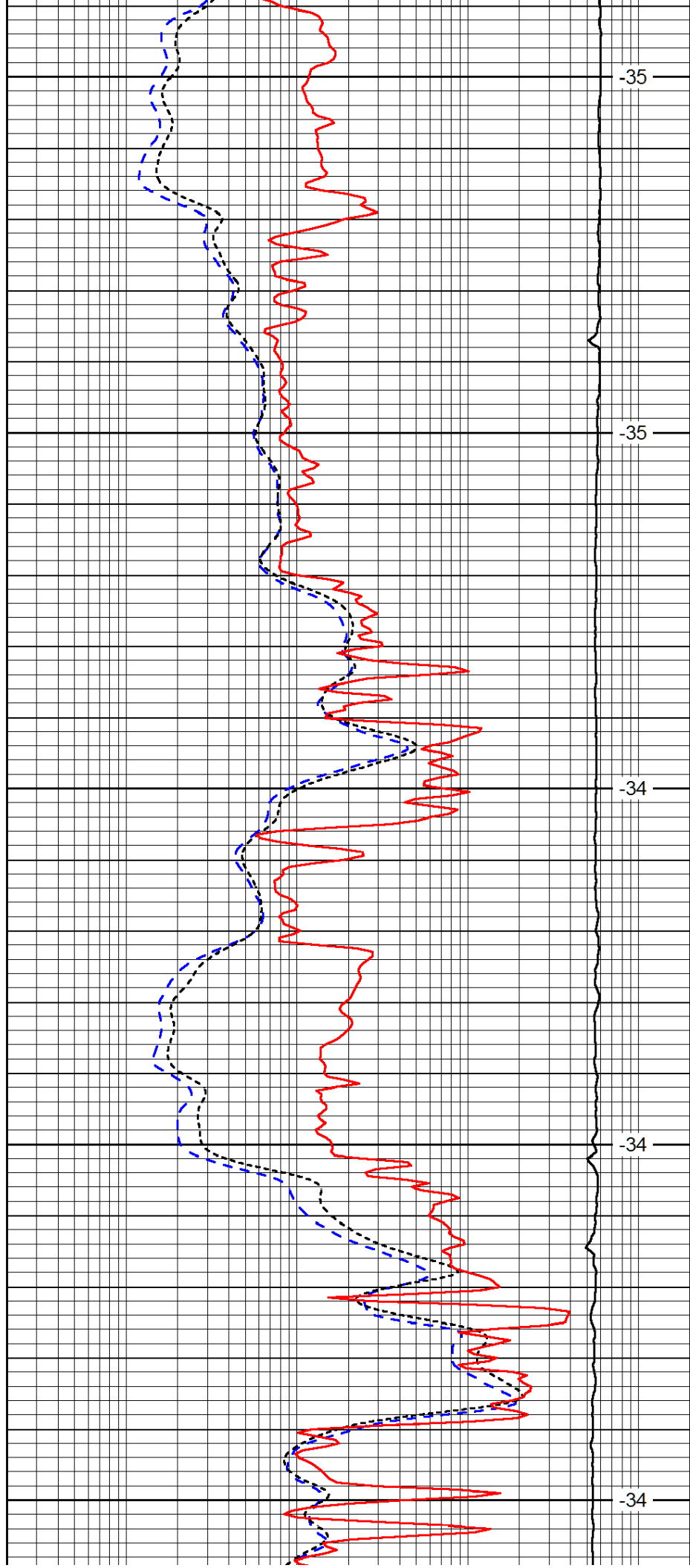
2350

2400

2450

2500

2550



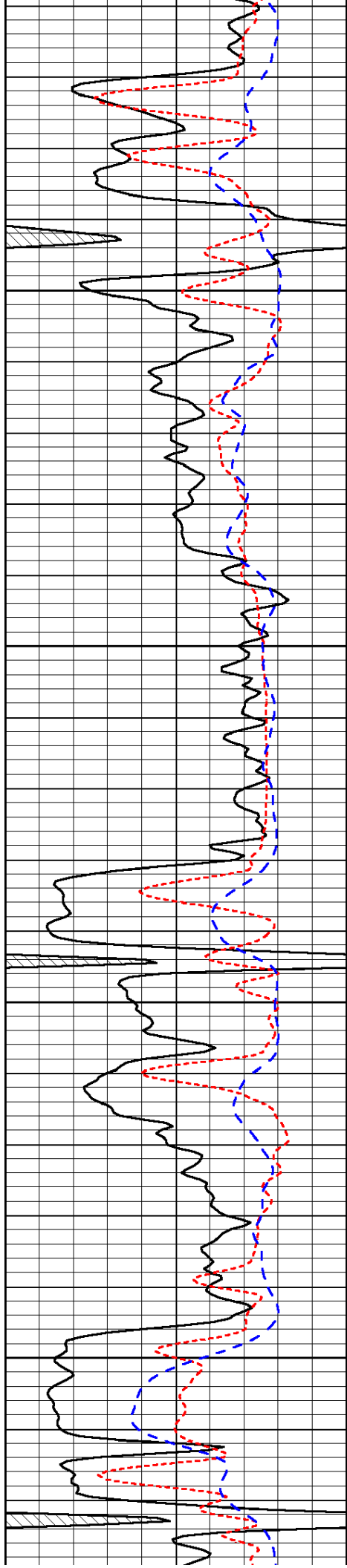
-35

-35

-34

-34

-34

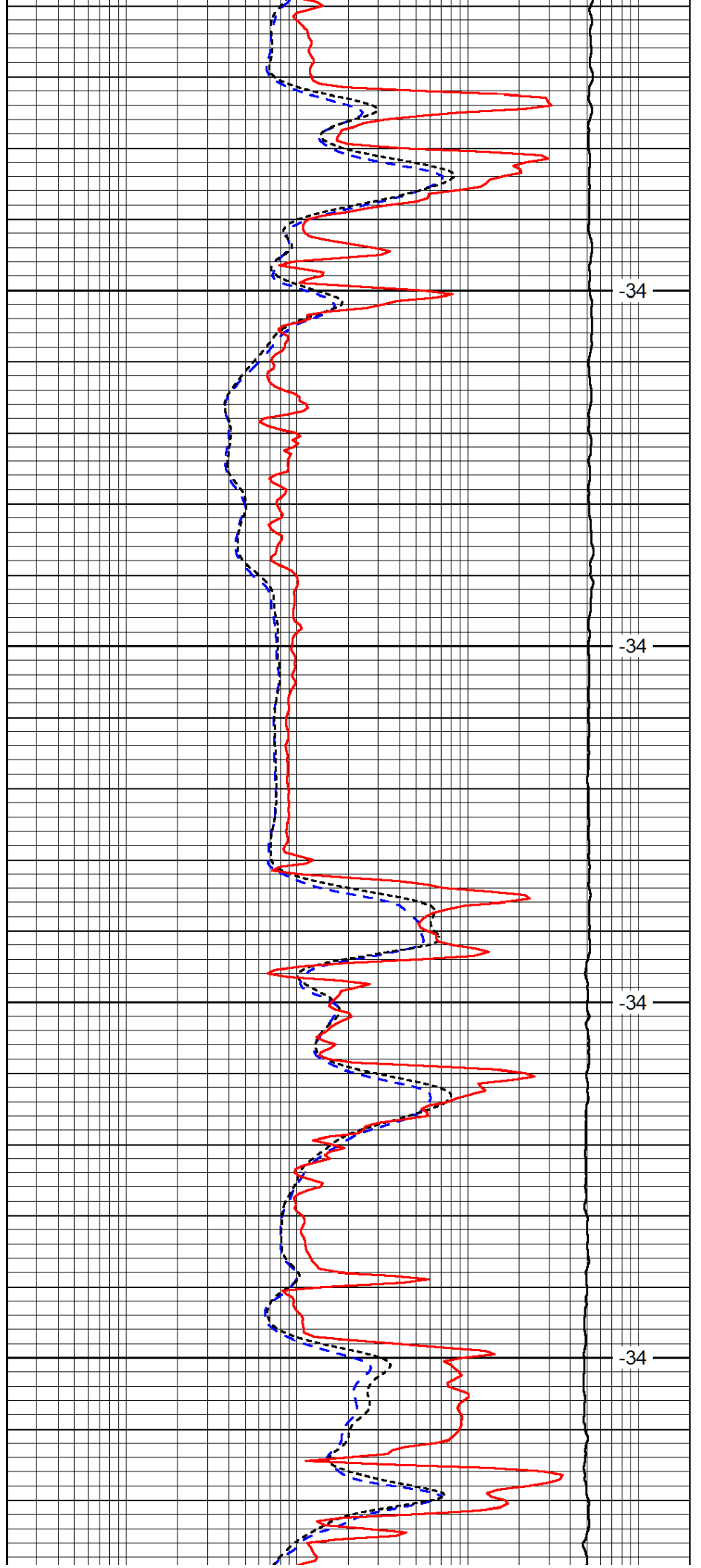


2600

2650

2700

2750

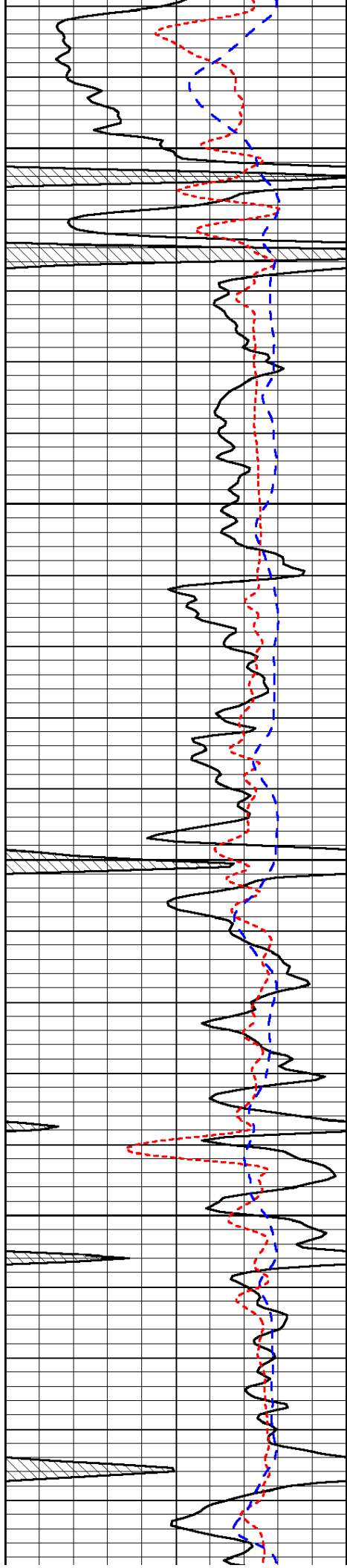


-34

-34

-34

-34

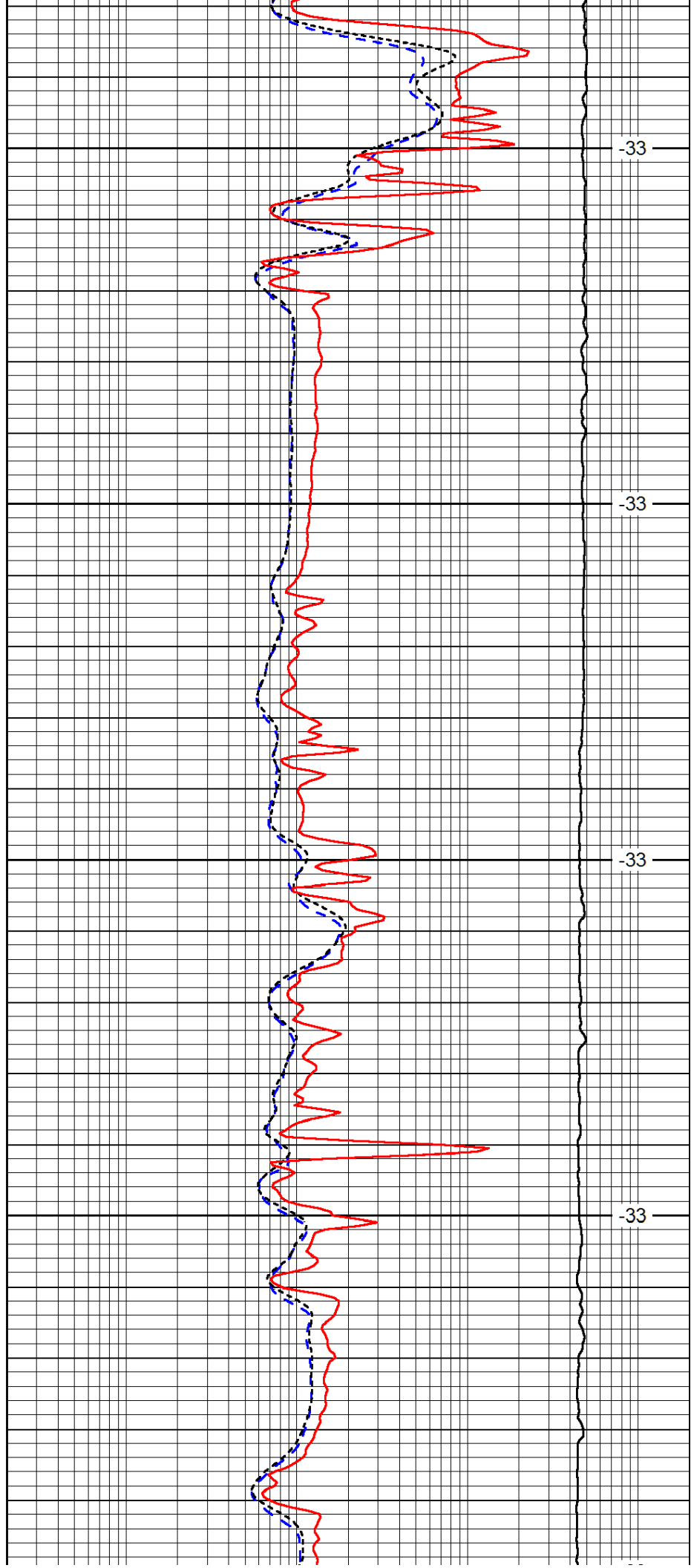


2800

2850

2900

2950

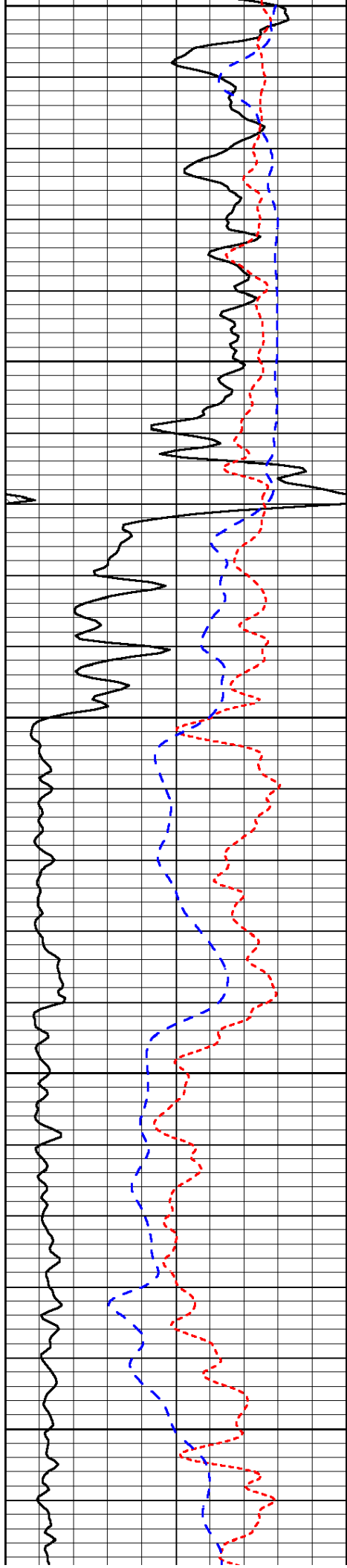


-33

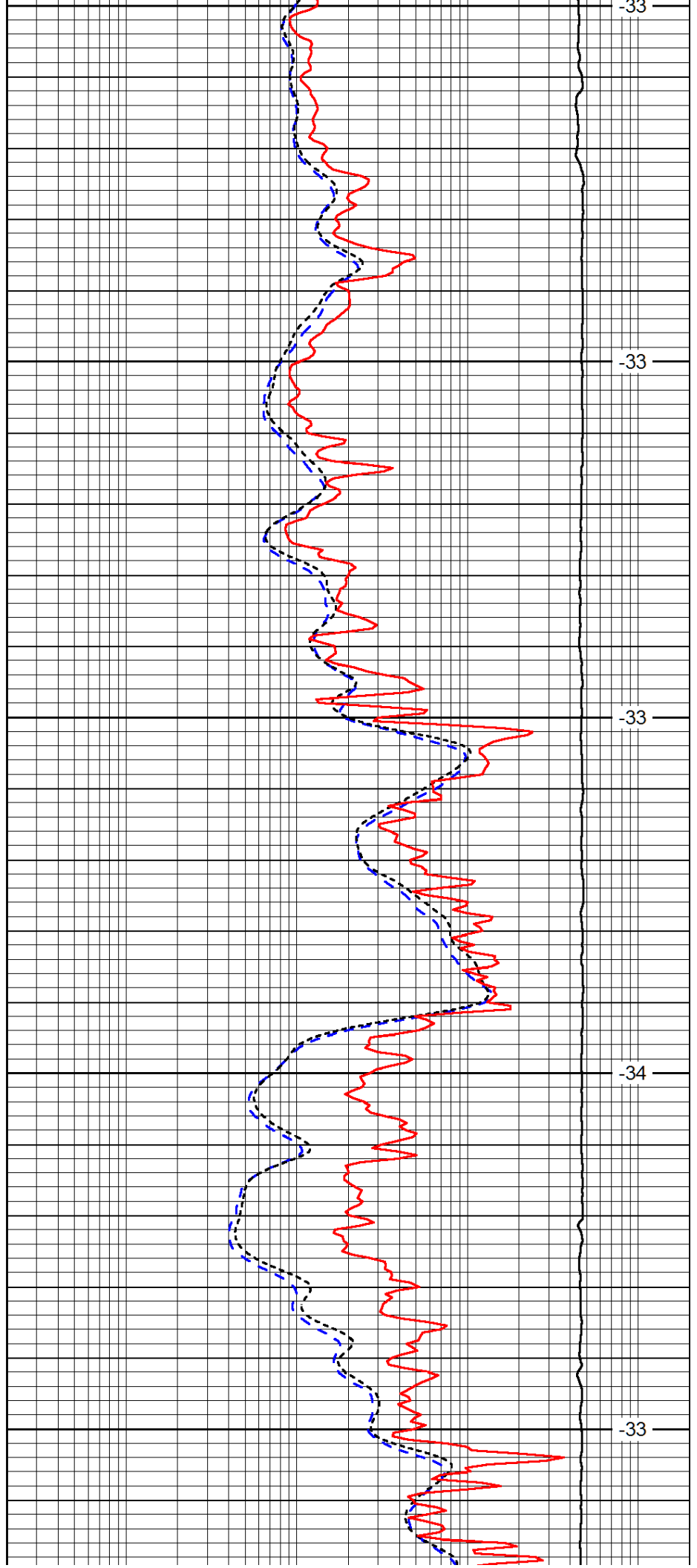
-33

-33

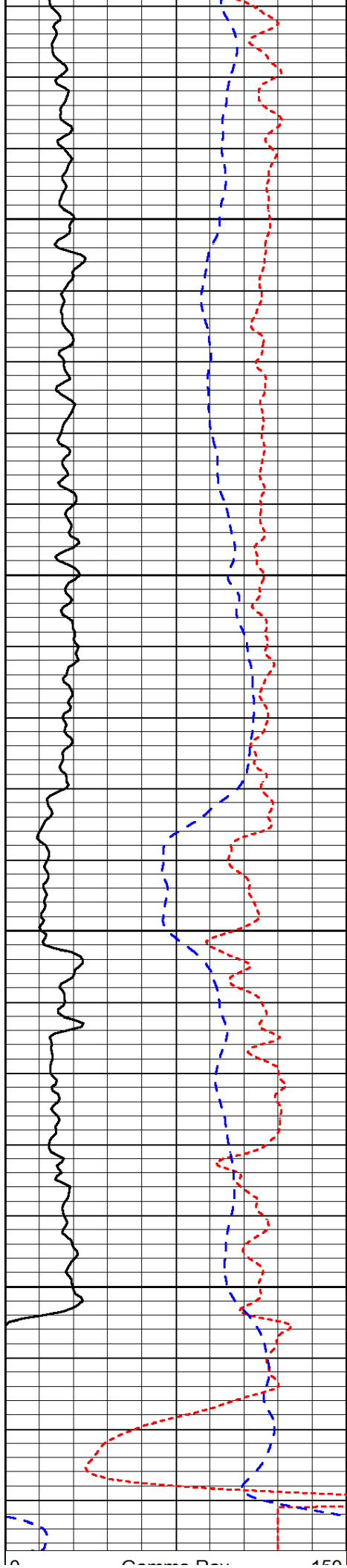
-33



3000  
3050  
3100  
3150  
3200



-33  
-33  
-33  
-34  
-33



3250

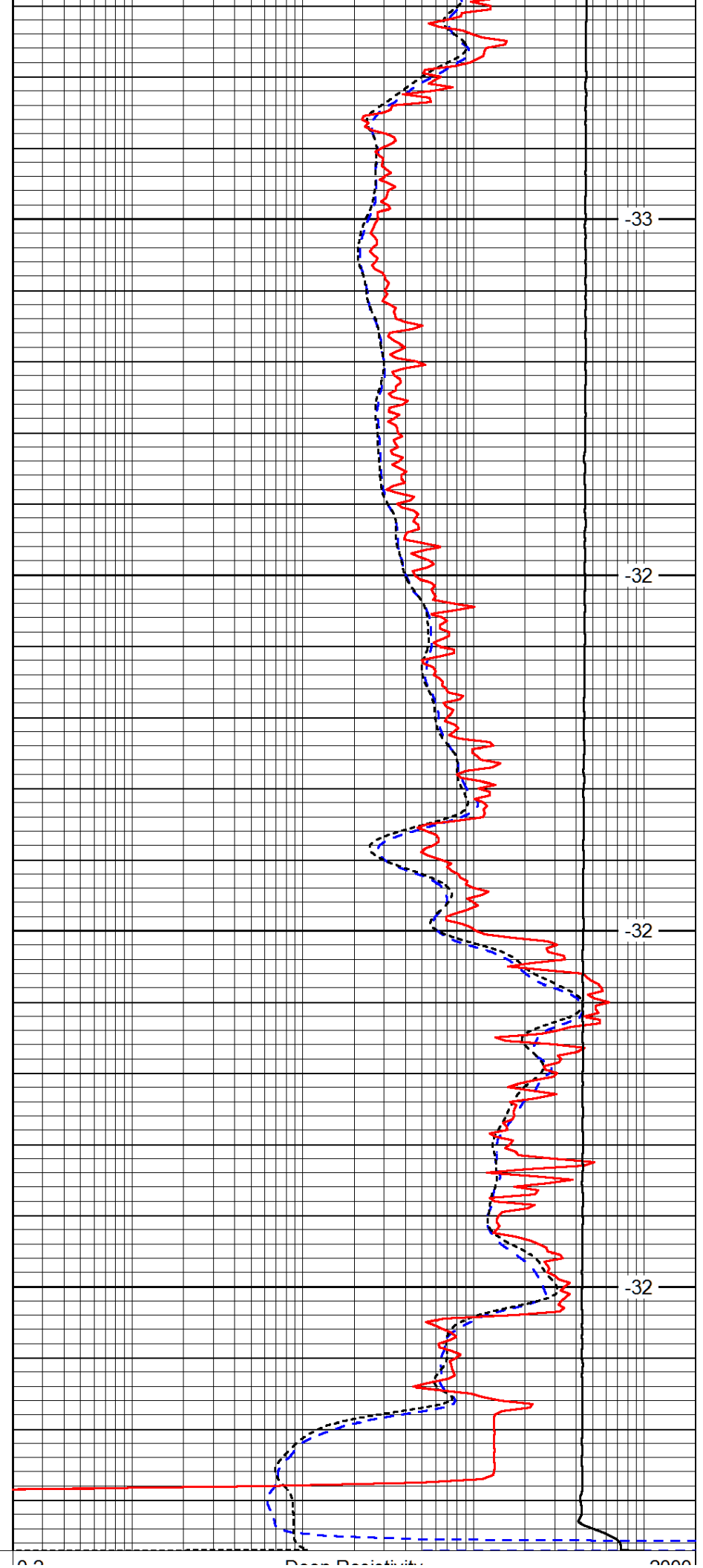
3300

3350

3400

Gamma Ray

450



-33

-32

-32

-32

Depth Position

2000

0	Gamma Ray	150
-160	RXO/RT	40
-200	SP (mV)	0

0.2	Deep Resistivity	2000
0.2	Medium Resistivity	2000
0.2	Shallow Resistivity	2000
10000	Line Tension	0

LSPD
------