



**Sonic Cement
Bond Log**

Pioneer Energy Services

API No.

15-109-21268-00-00

Company **Black Tea Oil, LLC**
Well **Krebs N No. 2**
Field **Bridges**
County **Logan**

State **Kansas**

Location

**W2-NE-NW-SW
2310' FSL & 910' FWL**

Other Services
Mast Trailer
T-1

Sec: **27**

Twp: **14 S**

Rge: **32 W**

Elevation

K.B. 2650
D.F. 2649
G.L. 2641

Permanent Datum Ground level Elevation 2641

Log Measured From Kelly Bushing 9' Ft. Above Perm. Datum

Drilling Measured From Kelly Bushing

Run Number

One

Date Survey

5/22/2014

Date Cementing

5/17/2014

Type Cementing Operation

Primary

Depth Driller

4400

Depth Logger

4346

Logged Interval

4346 to 2750

Casing Driller

5.5" @ T.D.

Float Collar -- D.V. Tool

2048 @

Squeeze Depth

////

Amount & Type Cement

////

Amount & Type Admix

////

Type Fluid In Hole

Water

Fluid Level

Full

Salinity PPM CL

////

Weight lb/gal -- Vis.

////

Approx. Logged Cement Top

2930

Calculated Cement Top

////

Max. Hole Temperature

122

Tool No.

RBT 4-4

Spacing Recorded

3-5

Equipment -- Location

12 A Drelling Hays

Recorded By

Mr. Jessie Dinkel

Witnessed By

Mr. Jessie Dinkel

<<< Fold Here >>>

All interpretations are opinions based on inferences from electrical or other measurements and we cannot and do not guarantee the accuracy or correctness of any interpretation, and we shall not, except in the case of gross or willful negligence on our part, be liable or responsible for any loss, costs, damages, or expenses incurred or sustained by anyone resulting from any interpretation made by any of our officers, agents or employees. These interpretations are also subject to our general terms and conditions set out in our current Price Schedule.

Comments

Thank you for using Pioneer Energy Services
785.625.3858

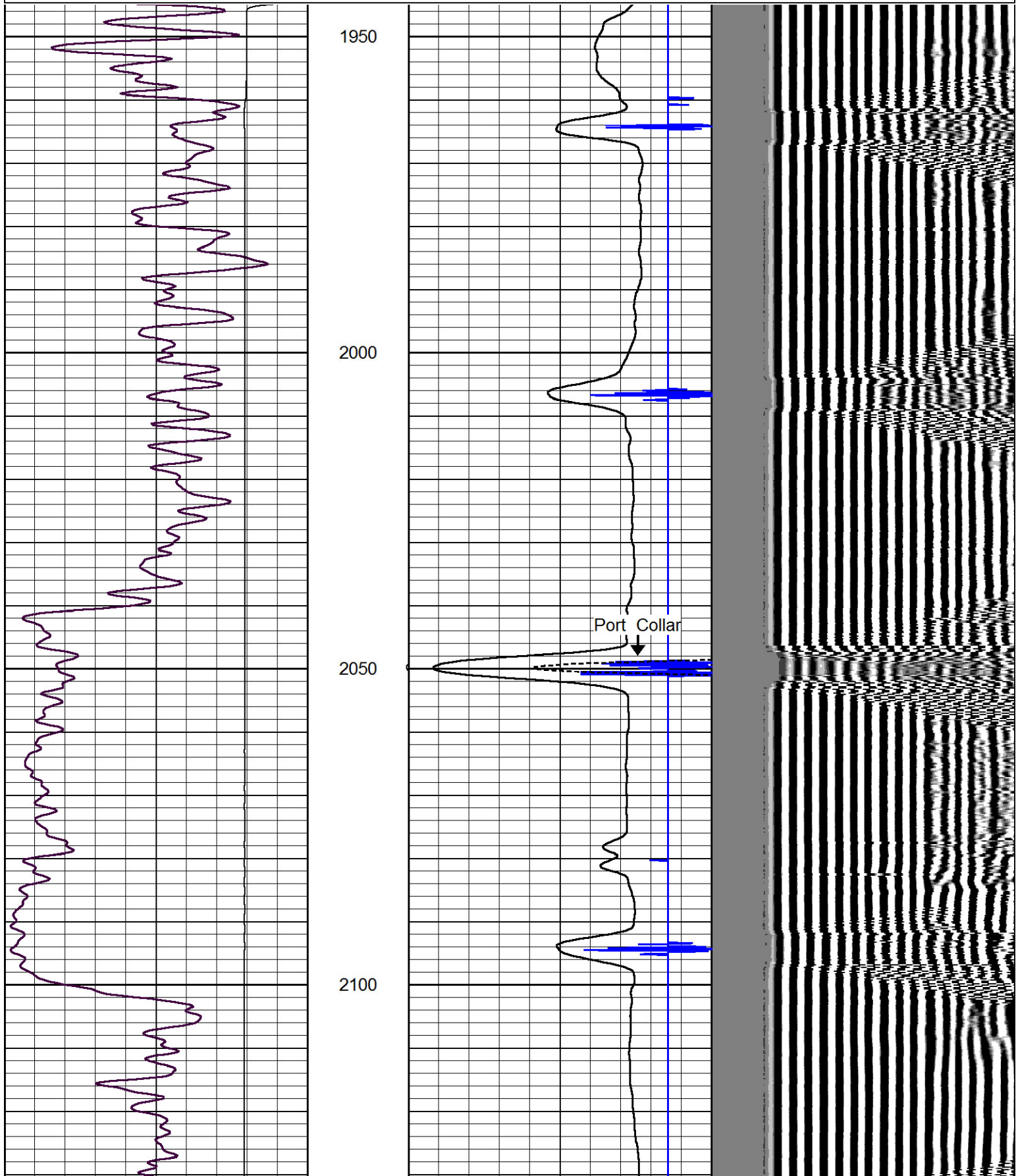
Oakley Ks.,
S to Jayhawk Rd.,
1S,W W into

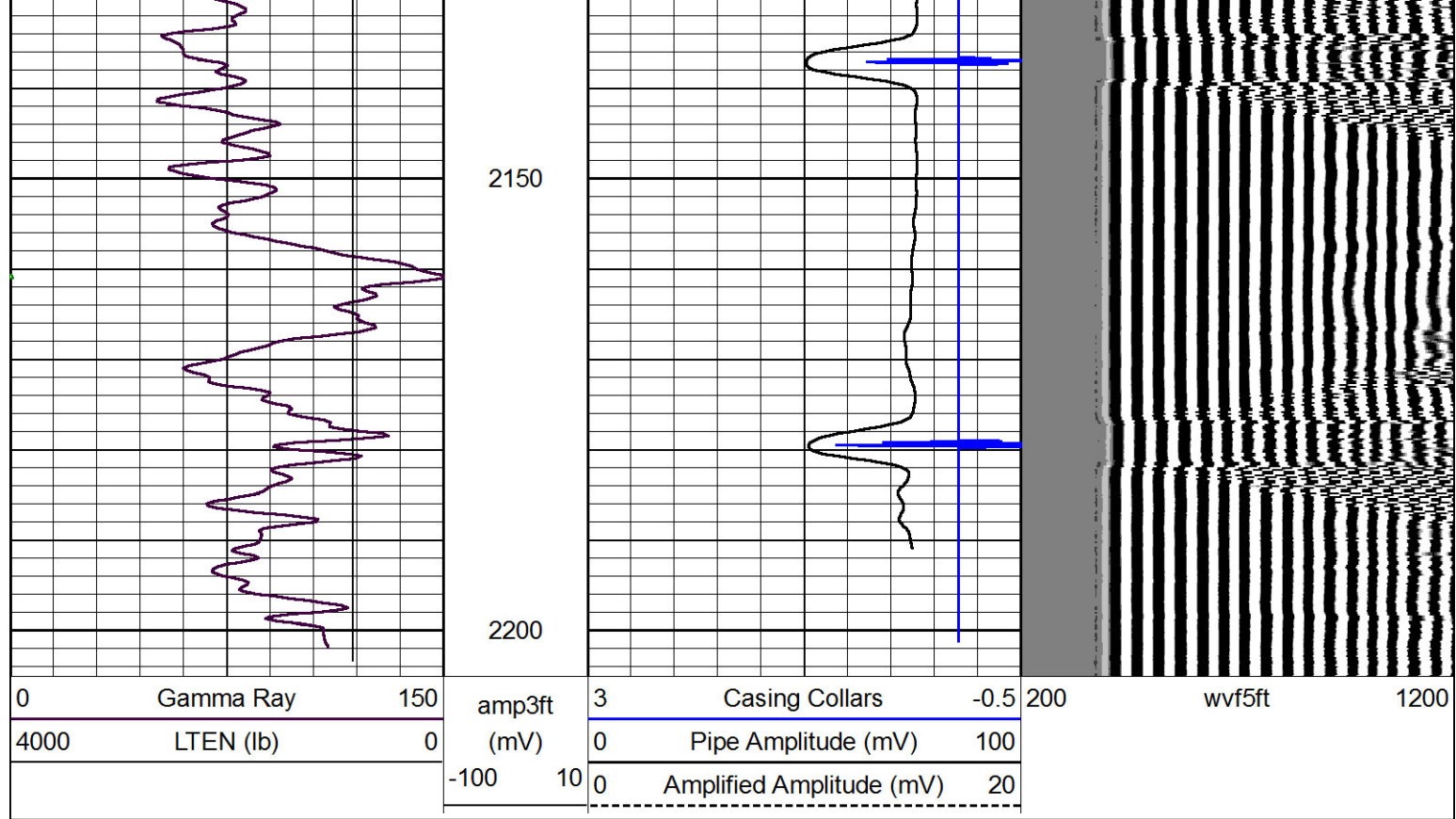


P/C Collar @ 2048

Database File: black_tea_krebs_n_2.db
 Dataset Pathname: grcbl/pass5.1
 Presentation Format: cbldr
 Dataset Creation: Thu May 22 10:49:54 2014 by Calc 7.0 B1
 Charted by: Depth in Feet scaled 1:240

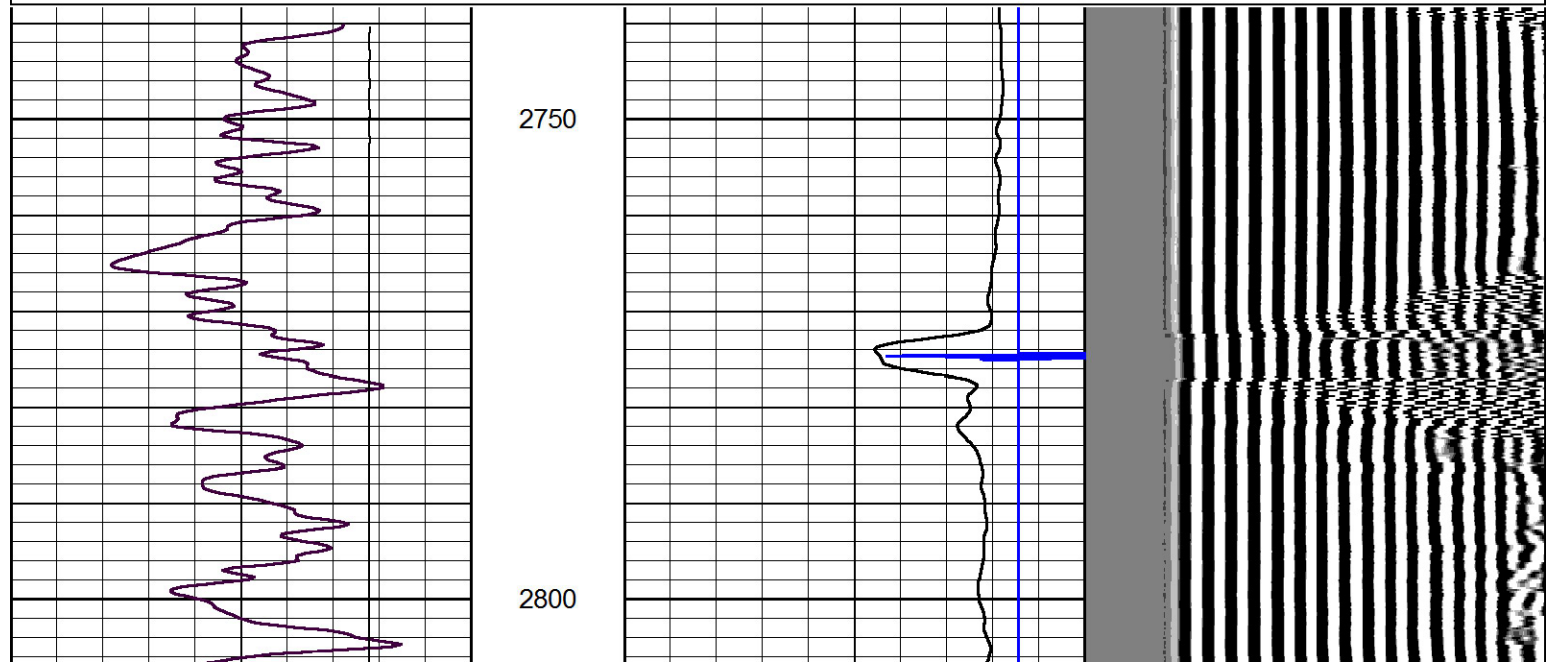
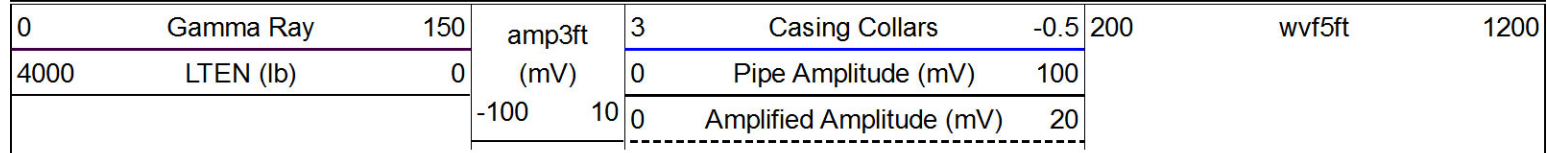
0	Gamma Ray	150	amp3ft	3	Casing Collars	-0.5	200	wvf5ft	1200
4000	LTEN (lb)	0	(mV)	0	Pipe Amplitude (mV)	100			
			-100	10	0	Amplified Amplitude (mV)	20		

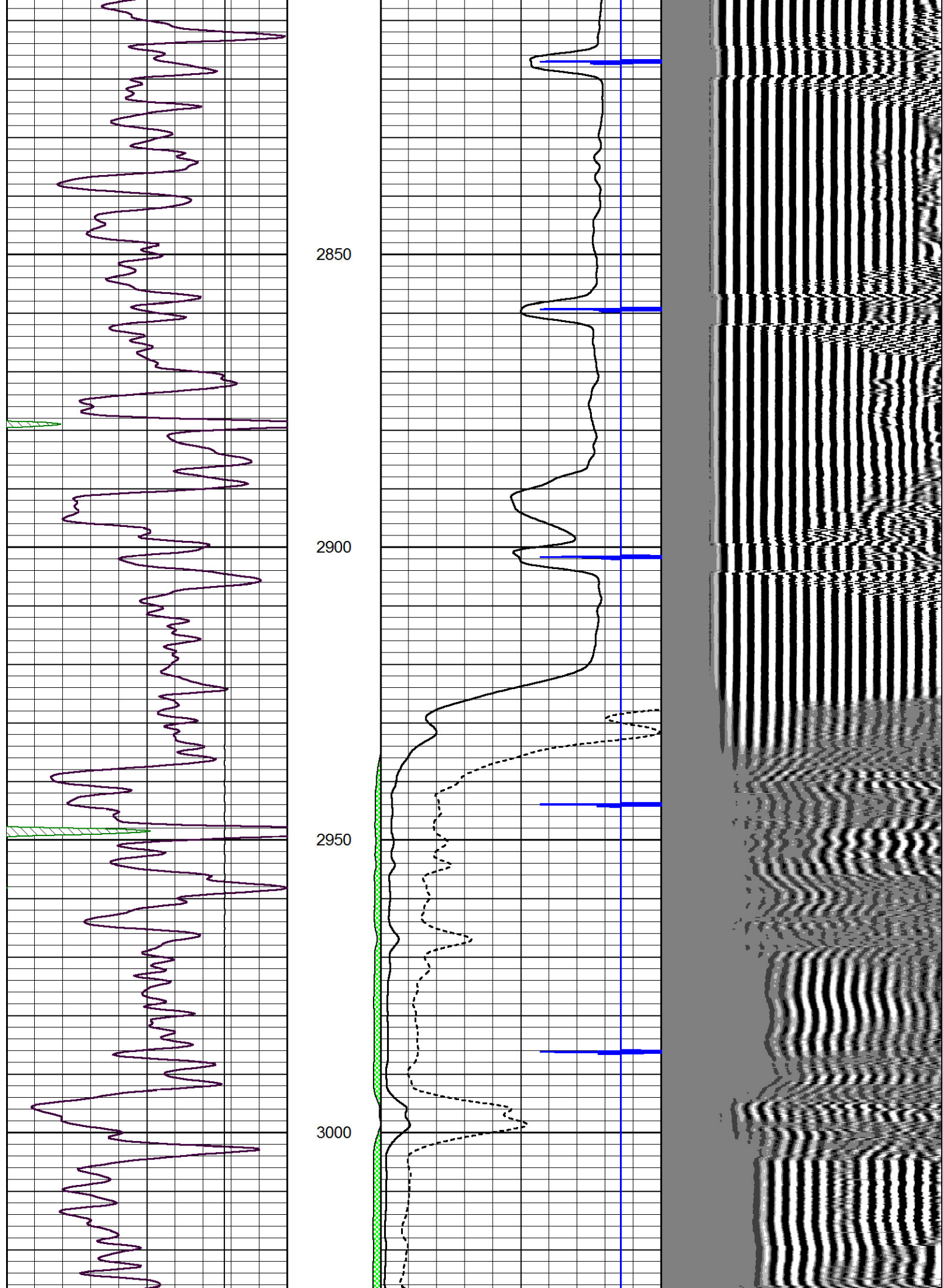


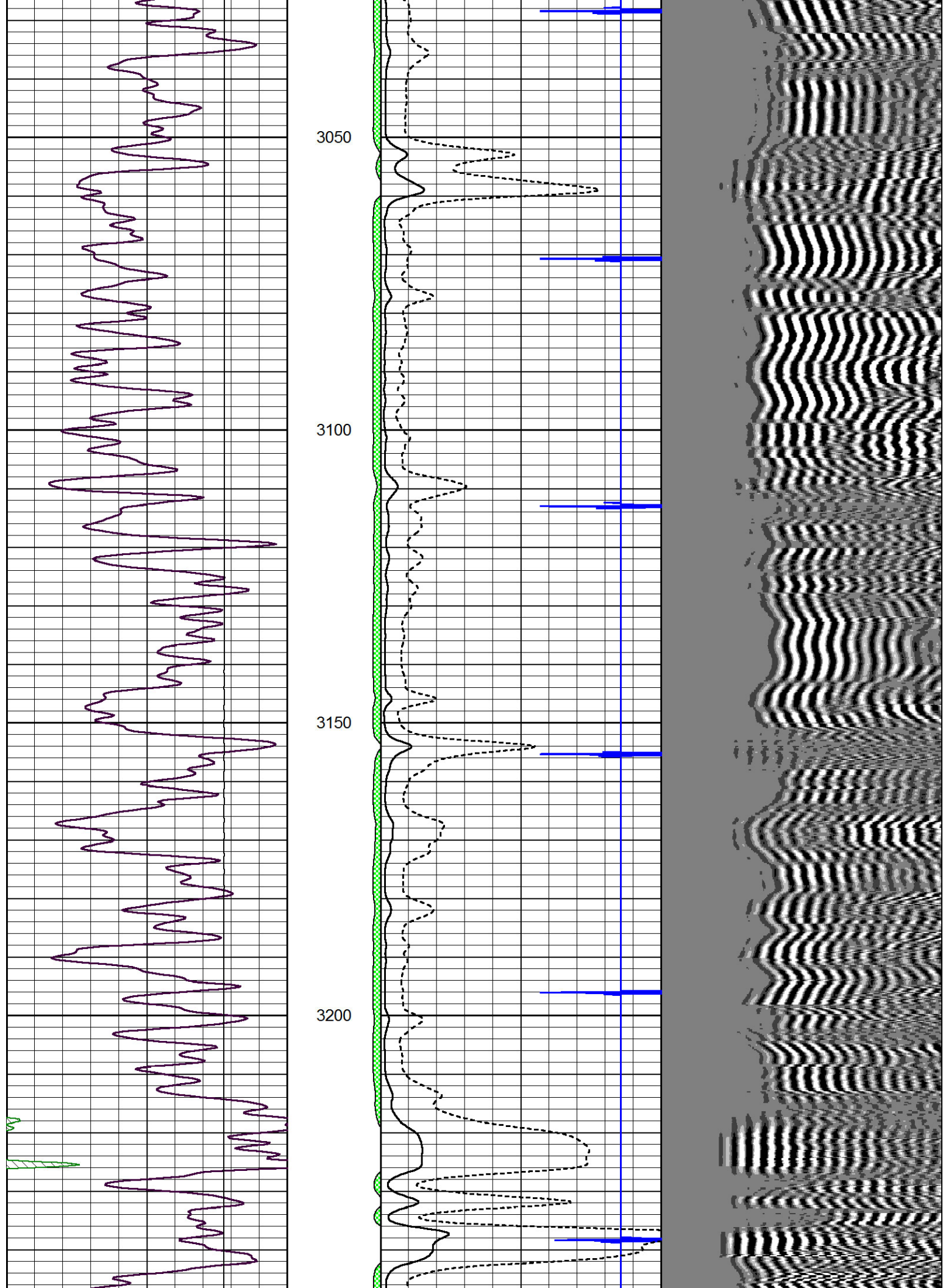


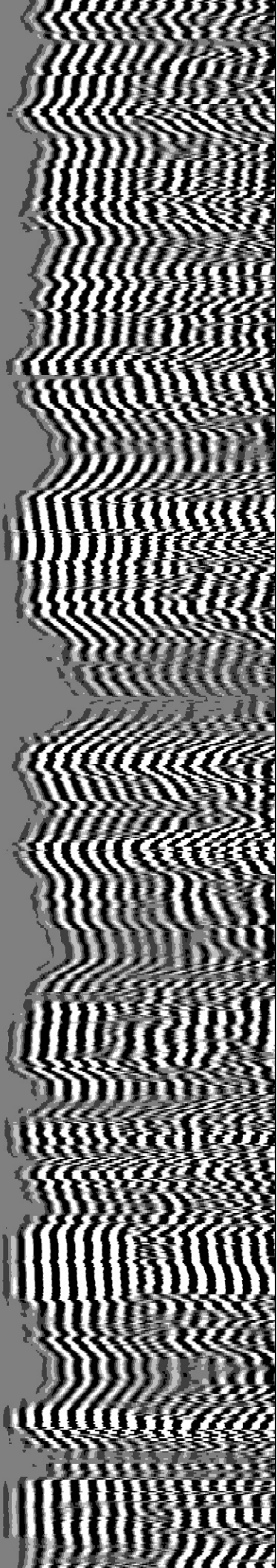
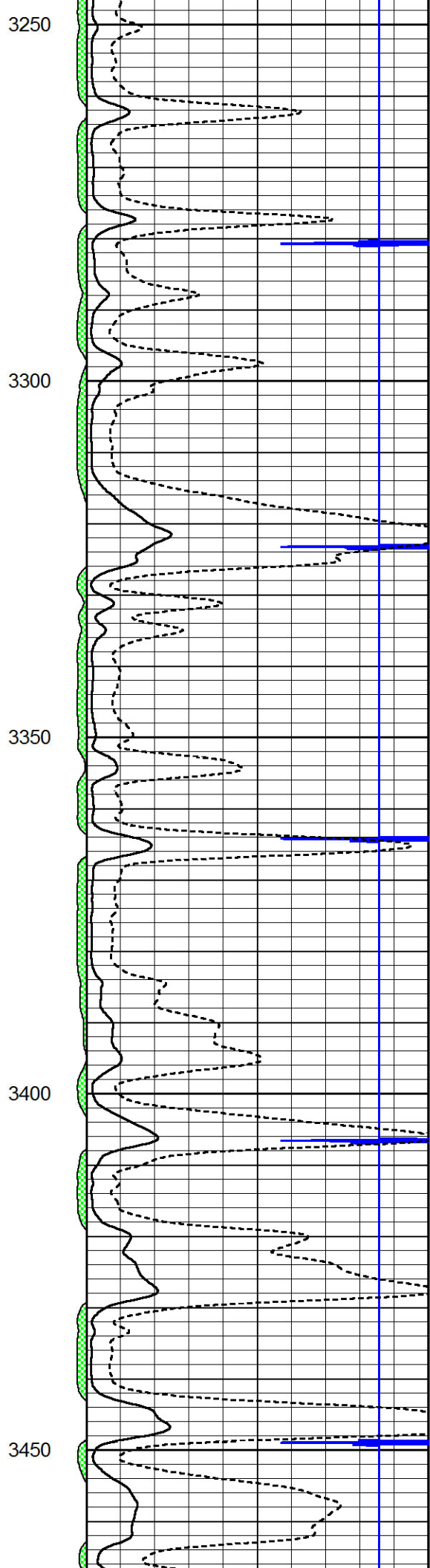
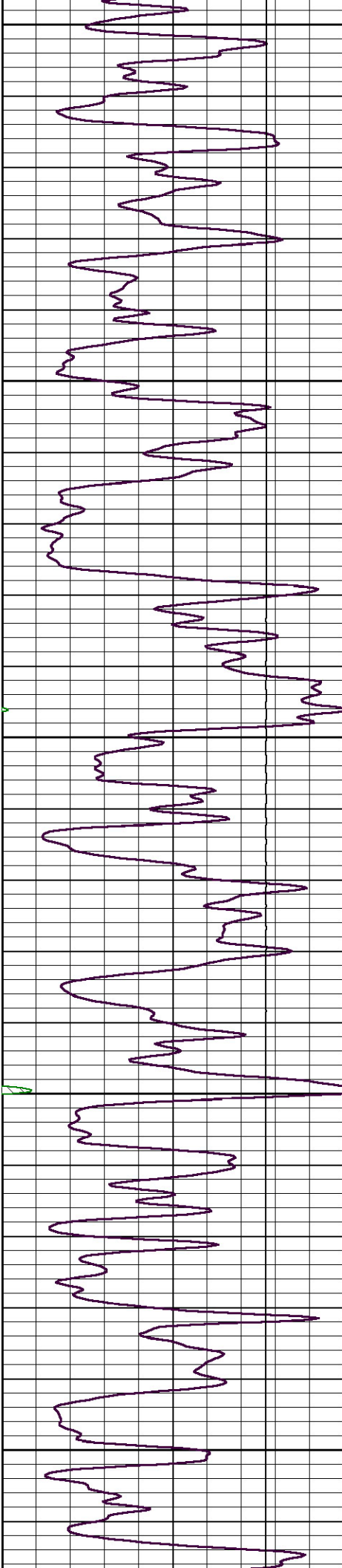
Main Pass

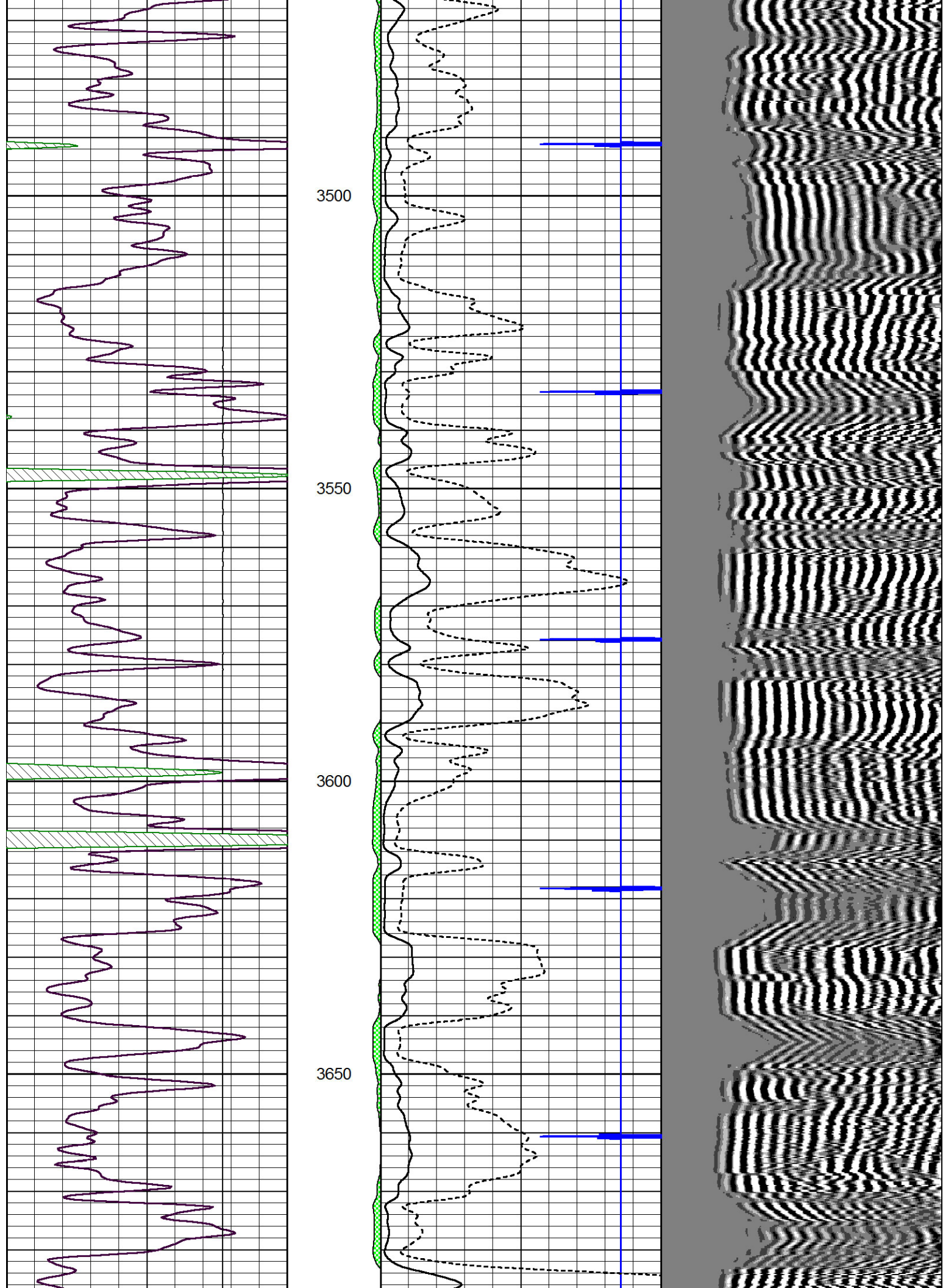
Database File: black_tea_krebs_n_2.db
 Dataset Pathname: grcbl/pass3
 Presentation Format: cbldr
 Dataset Creation: Thu May 22 10:53:30 2014 by Log 7.0 B1
 Charted by: Depth in Feet scaled 1:240

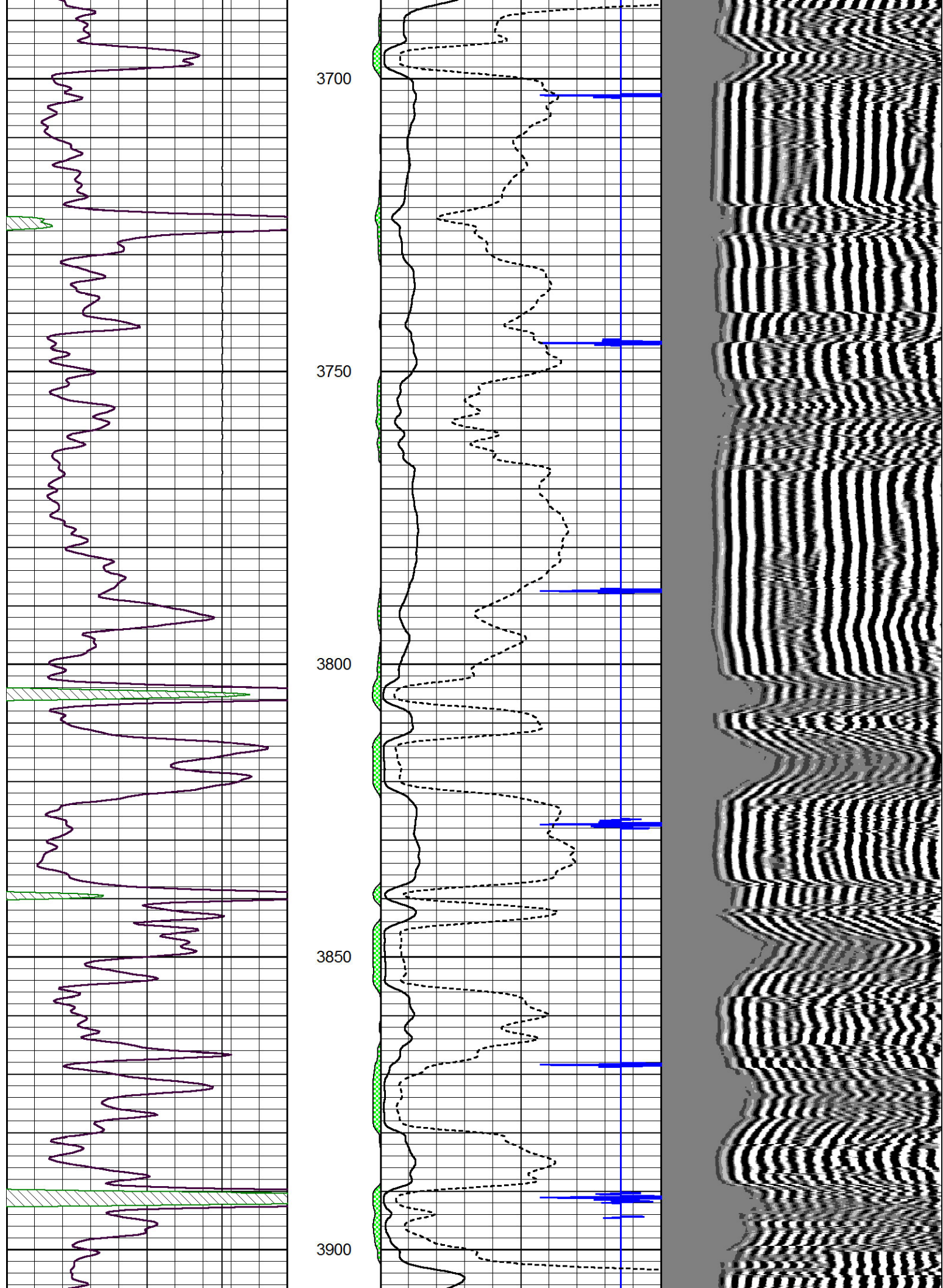


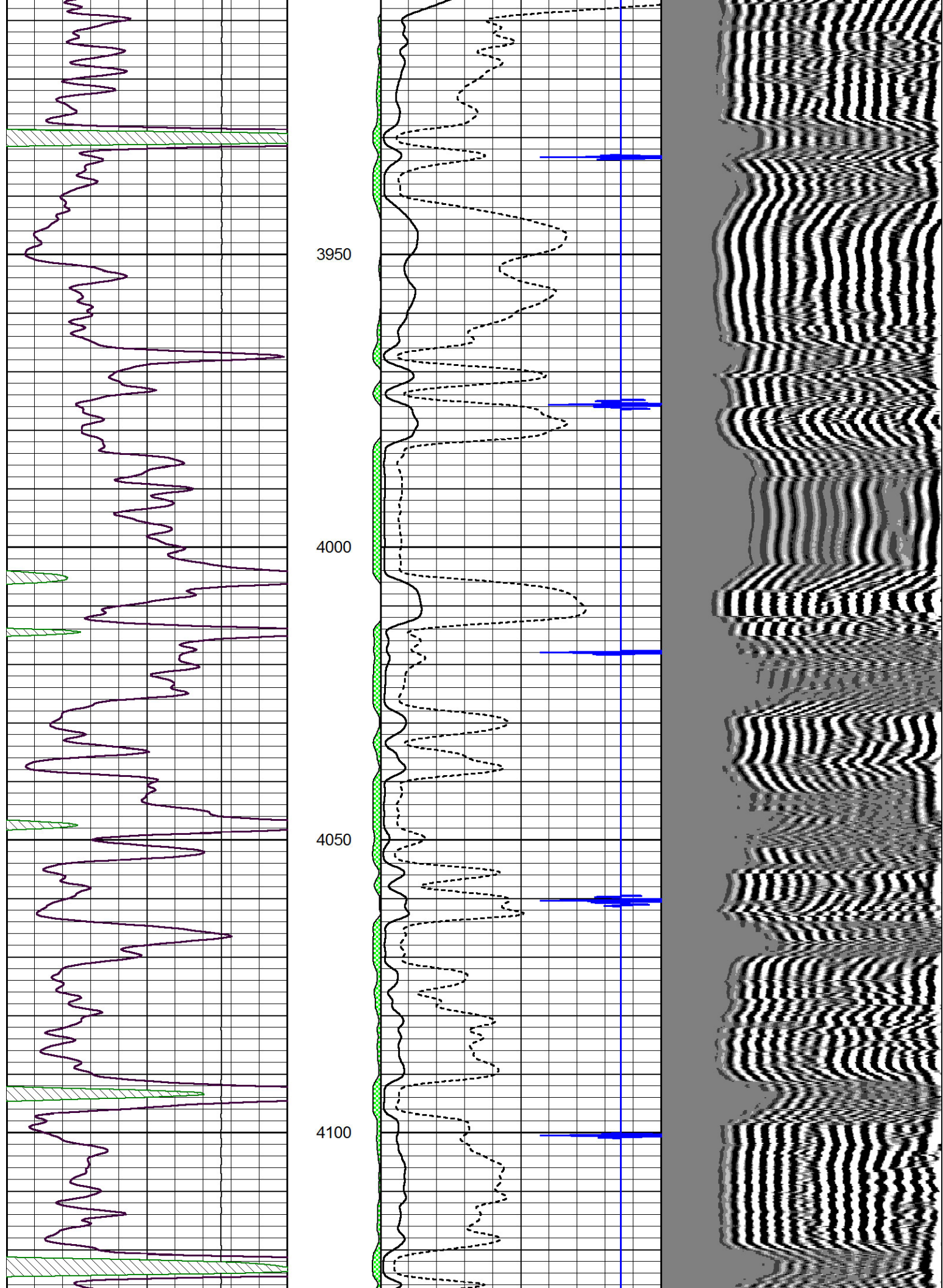


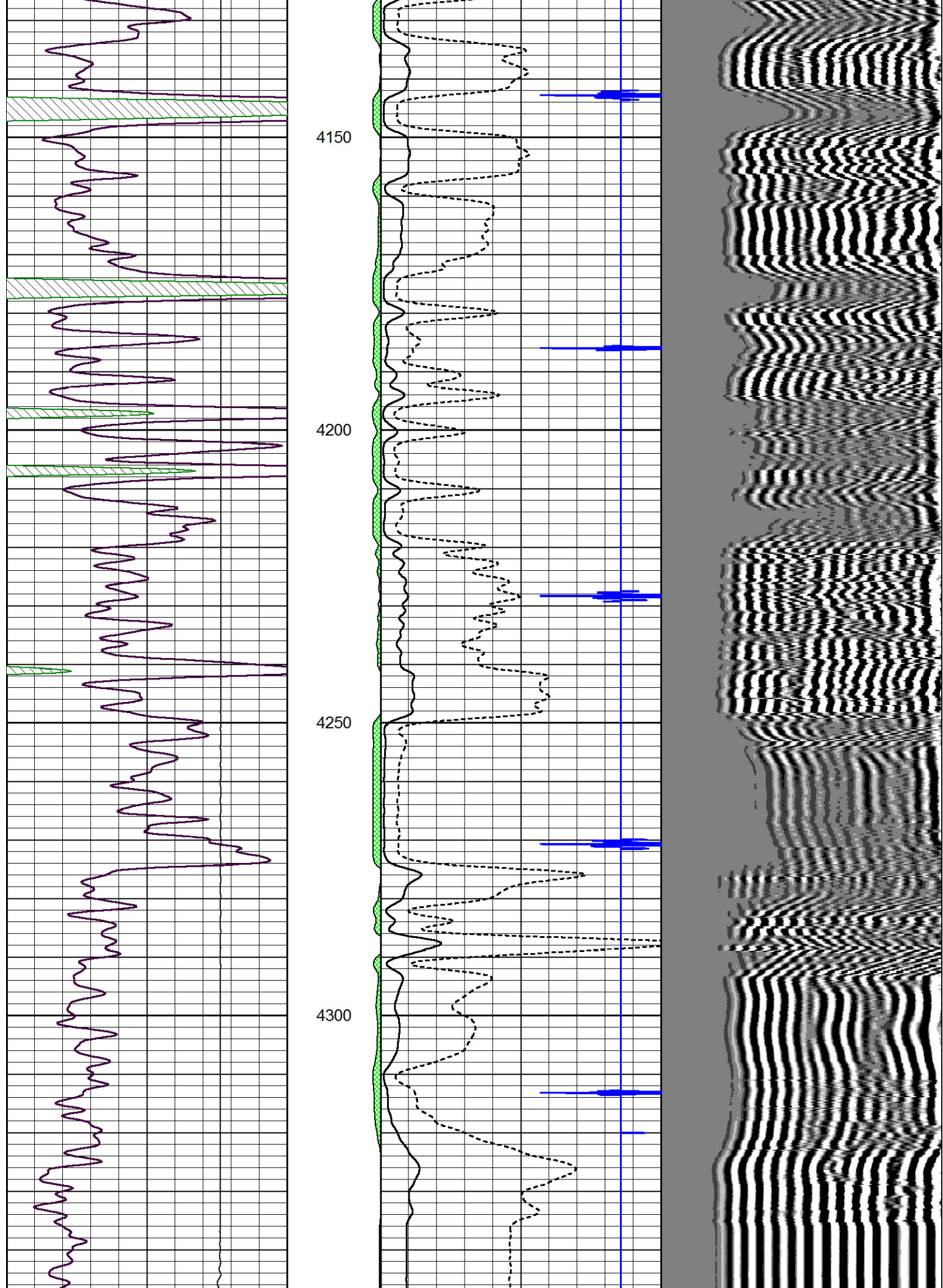


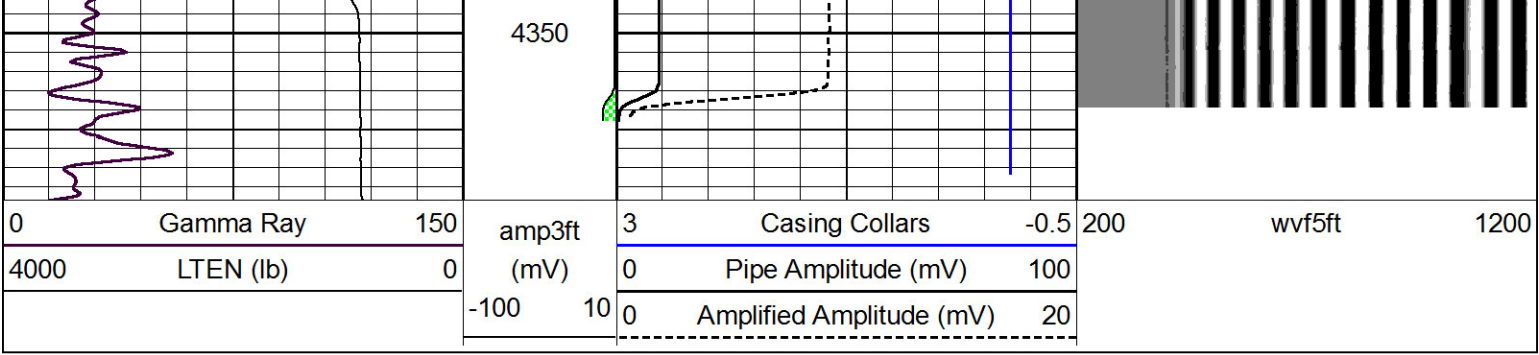






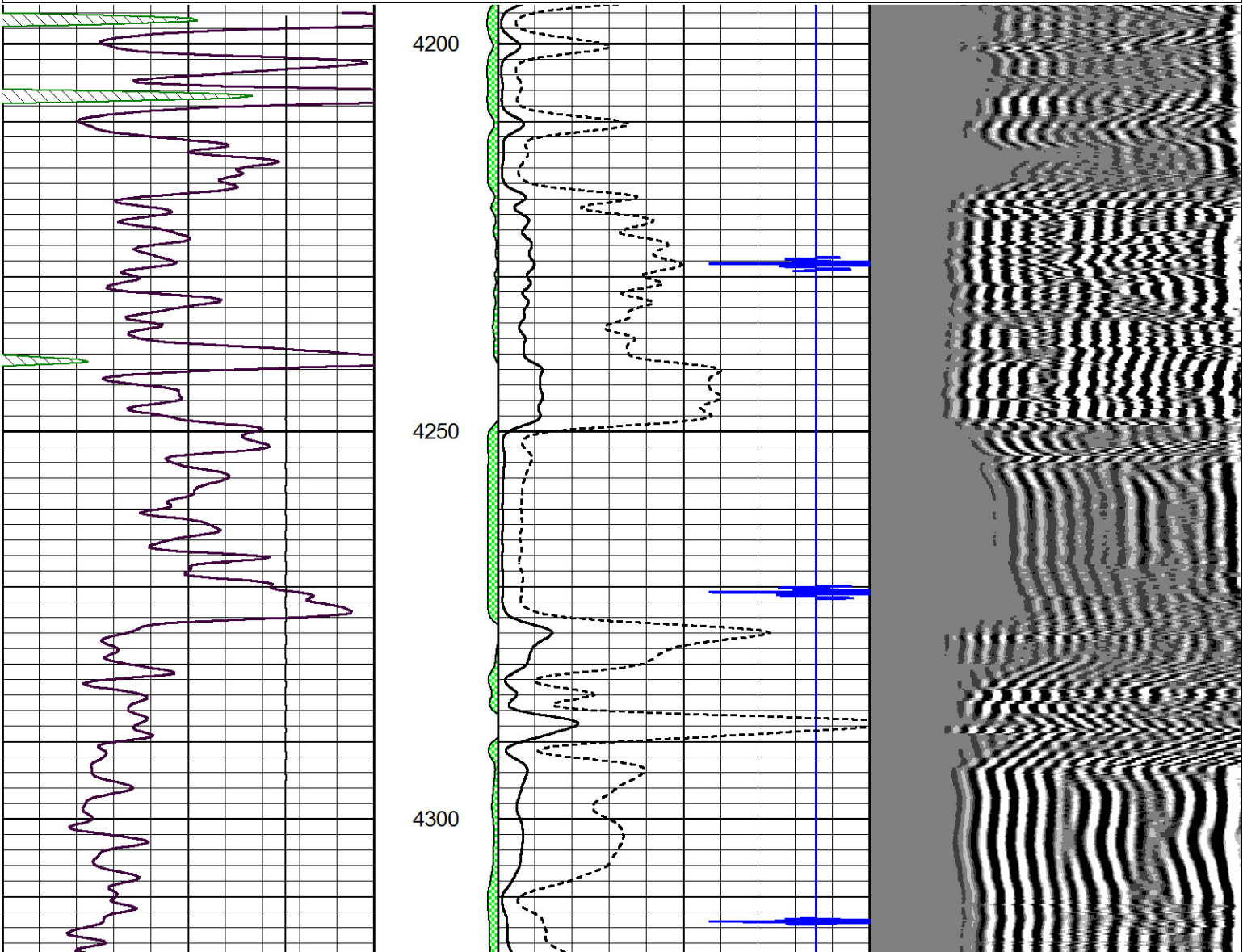
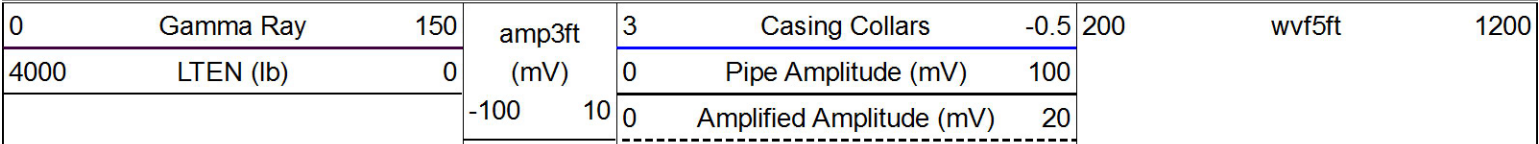


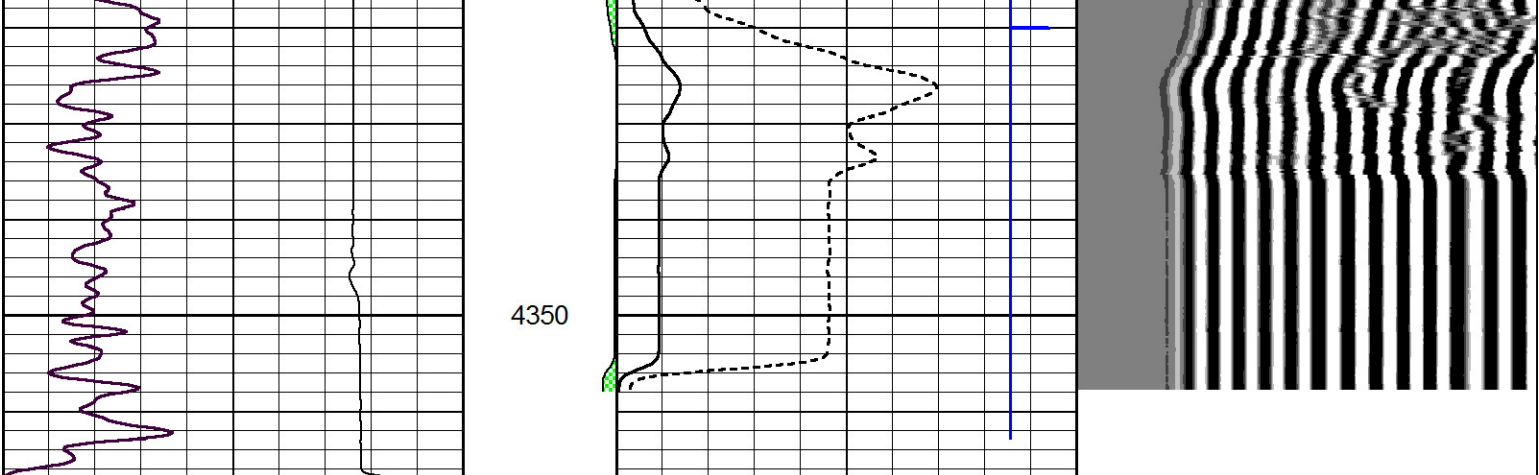




Repeat Section

Database File: black_tea_krebs_n_2.db
 Dataset Pathname: grcbl/pass2.1
 Presentation Format: cbldr
 Dataset Creation: Thu May 22 11:04:31 2014 by Calc 7.0 B1
 Charted by: Depth in Feet scaled 1:240





0	Gamma Ray	150	amp3ft	3	Casing Collars	-0.5	200	wvf5ft	1200
4000	LTEN (lb)	0	(mV)	0	Pipe Amplitude (mV)	100			
			-100 10	0	Amplified Amplitude (mV)	20			