



Pioneer Energy Services

Dual Compensated Porosity Log

15-109-21,268-00-00

API No.

Company **Black Tea Oil, LLC**

Well **Krebs N #2**

Field

County **Logan**

State **Kansas**

Location

**W2 NE NW SW
2,310' FSL & 910' FWL**

Sec: **27**

Twp: **14S**

Rge: **32W**

Other Services
DIL
MEI/BHCS

Ground Level

Elevation **2641**

Log Measured From

Kelly Bushing

K.B. **2650**

Drilling Measured From

Kelly Bushing

D.F. **2641**

Date

5/16/2014

Run Number

One

Type Log

CNL / CDL

Depth Driller

4400

Depth Logger

4399

Bottom Logged Interval

4378

Top Logged Interval

3300

Type Fluid In Hole

Chemical

Salinity, PPM CL

1000

Density Level

8.8

Max. Rec. Temp. F

120

Operating Rig Time

4 Hours

Equipment -- Location

108 Hays

Recorded By

J. Long

Witnessed By

Kevin Bailey

Borehole Record

Casing Record

Run No.	Bit	From	To	Size	Wgt.	From	To
1	12.25	00	265	8.625	24#	00	265
2	7.875	265	4400				

<<< Fold Here >>>

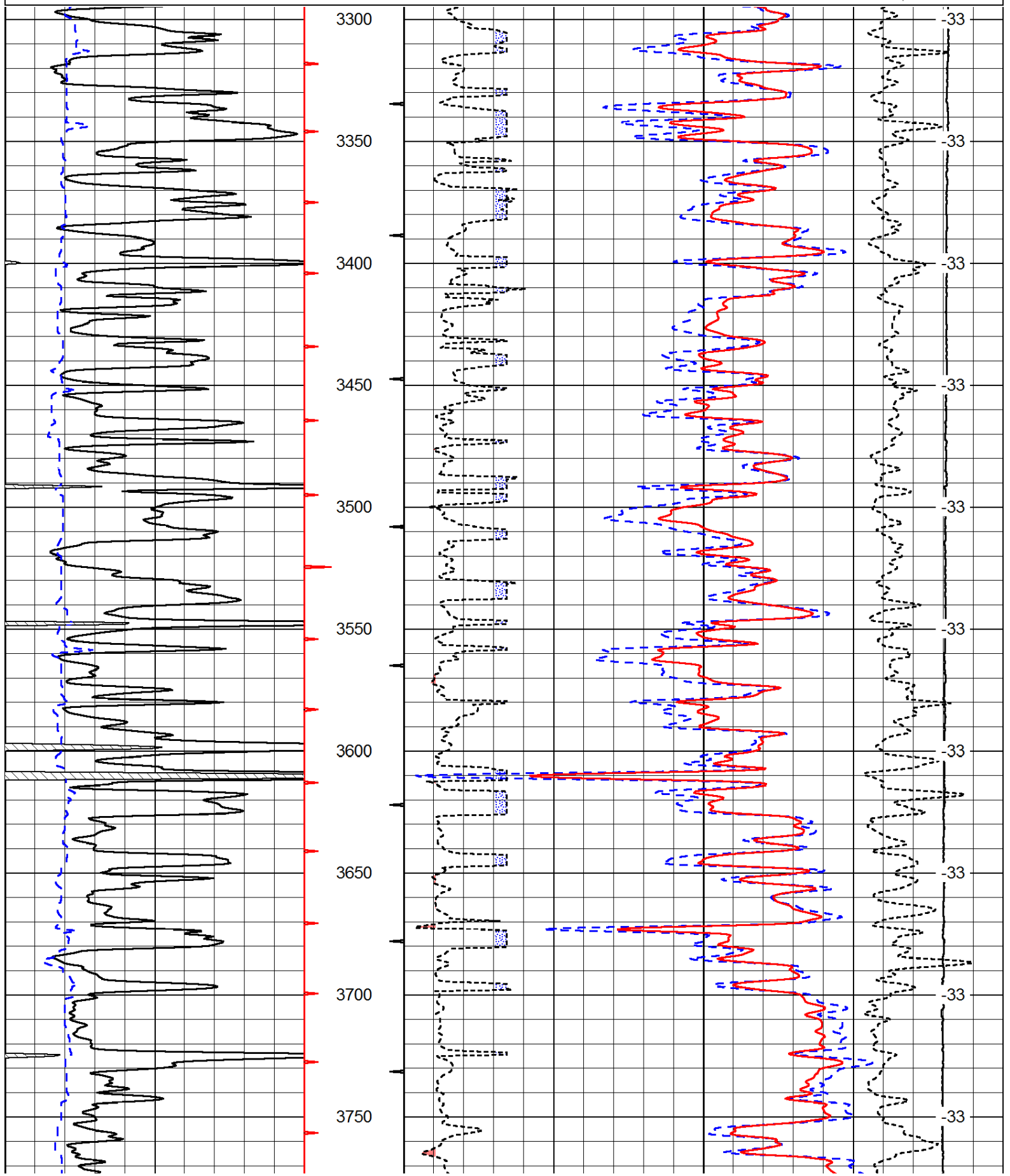
All interpretations are opinions based on inferences from electrical or other measurements and we cannot and do not guarantee the accuracy or correctness of any interpretation, and we shall not, except in the case of gross or willful negligence on our part, be liable or responsible for any loss, costs, damages, or expenses incurred or sustained by anyone resulting from any interpretation made by any of our officers, agents or employees. These interpretations are also subject to our general terms and conditions set out in our current Price Schedule.

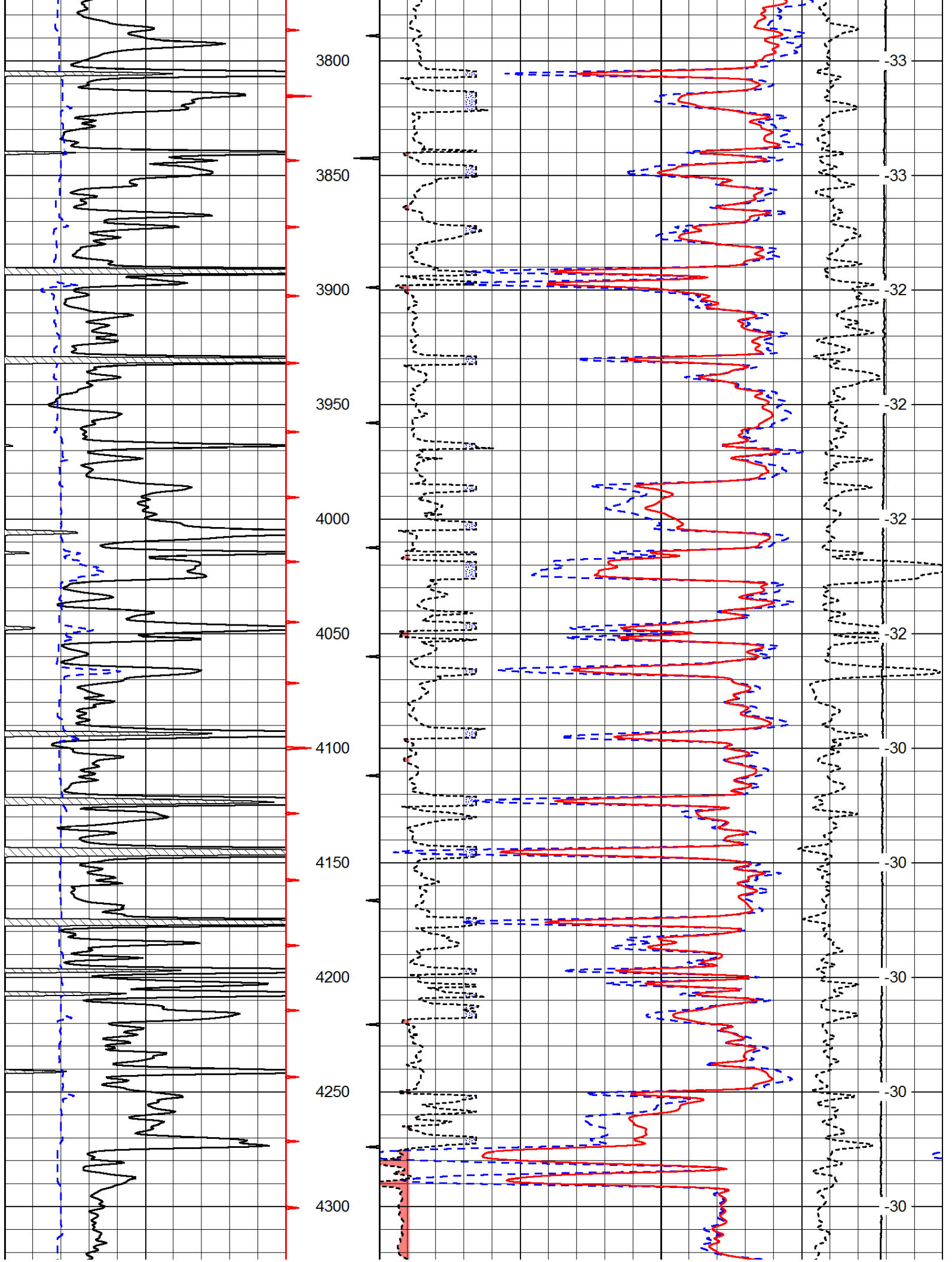
Comments

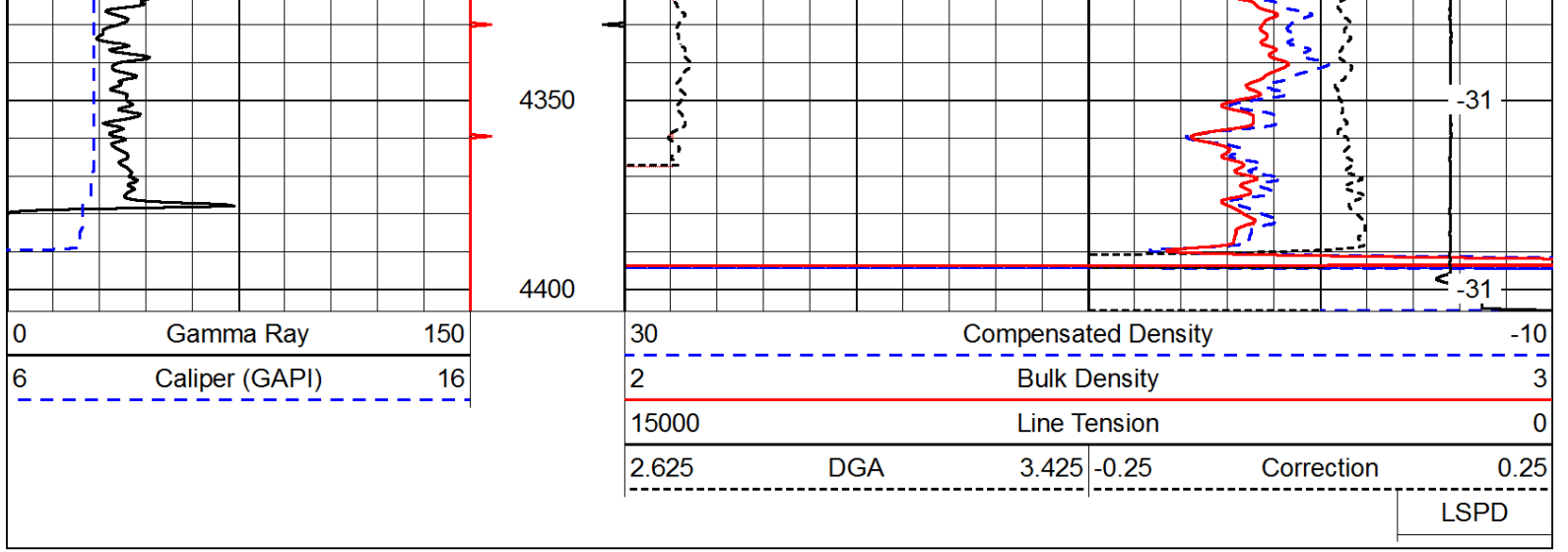
Thank you for using Pioneer Energy Services
www.pioneerenergy.com
 785 625 3858
 Oakley, South to Jayhawk Road, 1 South, West Into

0	Gamma Ray	150
6	Caliper (GAPI)	16

30	Compensated Density		-10
2	Bulk Density		3
15000	Line Tension		0
2.625	DGA	3.425	-0.25
			Correction
			LSPD







Database File: c:\warrior\data\black tea_krebs n #2\blacktea_krebs_n_2hd.db
 Dataset Pathname: dil/blckstck
 Presentation Format: cndlspec
 Dataset Creation: Fri May 16 21:10:51 2014
 Charted by: Depth in Feet scaled 1:240

