



Pioneer Energy Services

Dual Induction Log

15-109-21,268-00-00

API No.

Company **Black Tea Oil, LLC**

Well **Krebs N #2**

Field

County **Logan**

State

Kansas

Location

**W2 NE NW SW
2,310' FSL & 910' FWL**

Other Services
CNL/CDL
MEL/BHCS

Sec: **27**

Twp: **14S**

Rge: **32W**

Elevation

K.B. 2650

D.F. 2641

G.L. 2641

Permanent Datum **Ground Level**

Elevation **2641**

Log Measured From **Kelly Bushing**

9 Ft. Above Perm. Datum

Drilling Measured From **Kelly Bushing**

Date **5/16/2014**

Run Number **One**

Depth Driller **4400**

Depth Logger **4399**

Bottom Logged Interval **4398**

Top Log Interval **250**

Casing Driller **8.625 @ 265**

Casing Logger **262**

Bit Size **7.875**

Type Fluid in Hole **Chemical**

Salinity,ppm CL **1000**

Density / Viscosity **8.8 52**

pH / Fluid Loss **10.5 8.0**

Source of Sample **Flowline**

Rm @ Meas. Temp **1.10 @ 84**

Rmf @ Meas. Temp **.83 @ 84**

Rmc @ Meas. Temp **1.49 @ 84**

Source of Rmf / Rmc **Charts**

Rm @ BHT **.77 @ 120**

Operating Rig Time **4 Hours**

Max Rec. Temp. F **120**

Equipment Number **108**

Location **Hays**

Recorded By **J. Long**

Witnessed By **Kevin Bailey**

<<< Fold Here >>>

All interpretations are opinions based on inferences from electrical or other measurements and we cannot and do not guarantee the accuracy or correctness of any interpretation, and we shall not, except in the case of gross or willful negligence on our part, be liable or responsible for any loss, costs, damages, or expenses incurred or sustained by anyone resulting from any interpretation made by any of our officers, agents or employees. These interpretations are also subject to our general terms and conditions set out in our current Price Schedule.

Comments

Thank you for using Pioneer Energy Services
www.pioneerenergy.com
 785 625 3858

Oakley, South to Jayhawk Road, 1 South, West Into

Database File: c:\warrior\data\black tea_krebs n #2\blacktea_krebs_n_2hd.db
 Dataset Pathname: dil\blckstck
 Presentation Format: dil2in
 Dataset Creation: Fri May 16 21:10:51 2014
 Charted by: Depth in Feet scaled 1:600

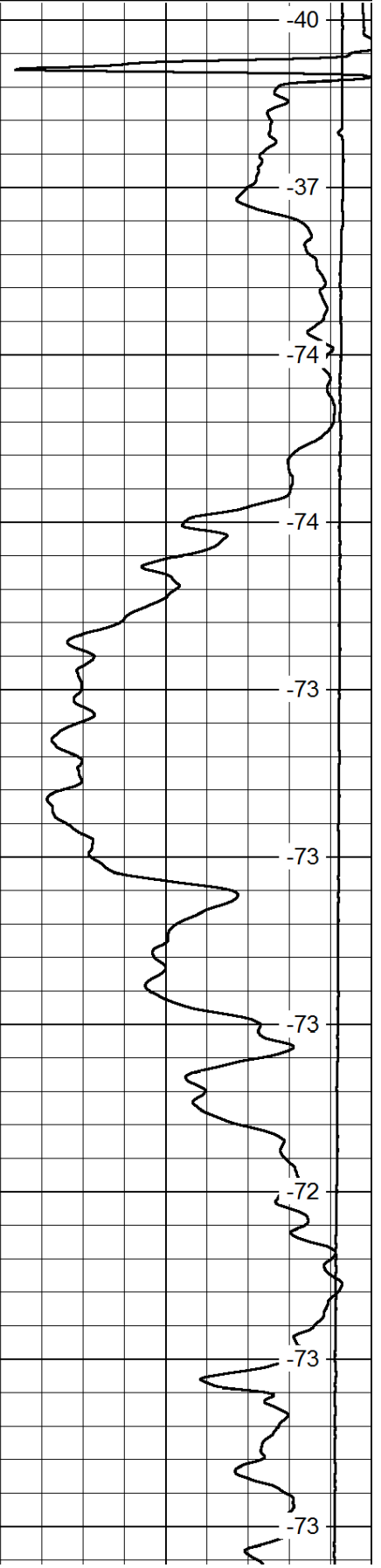
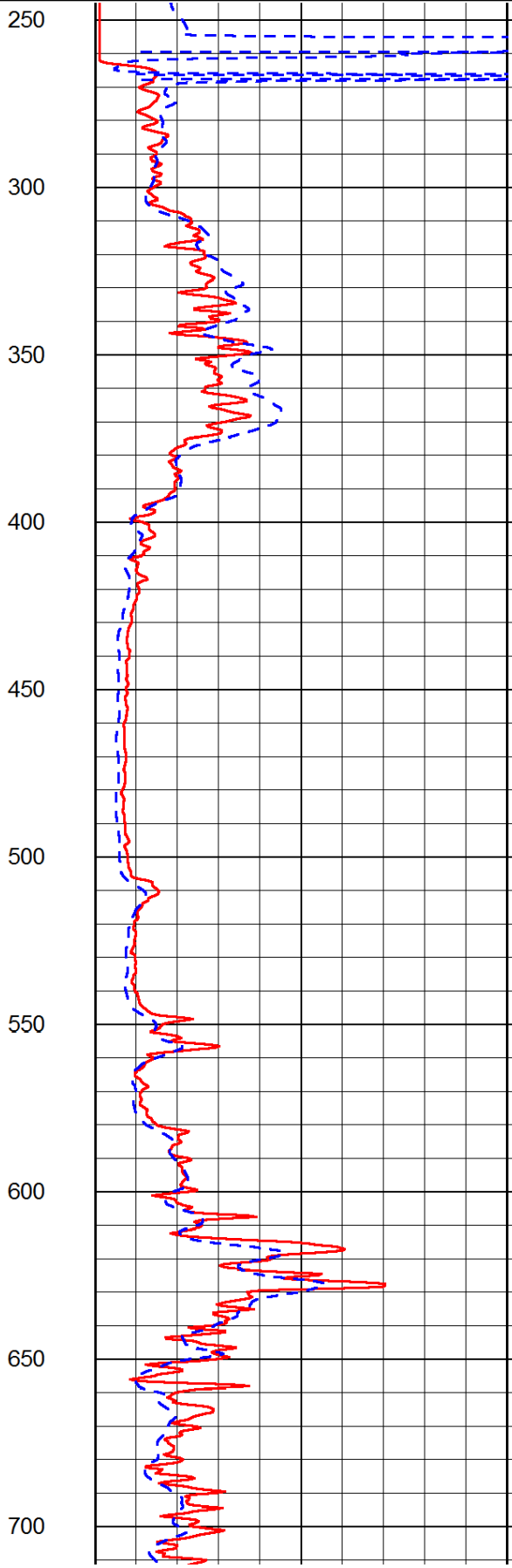
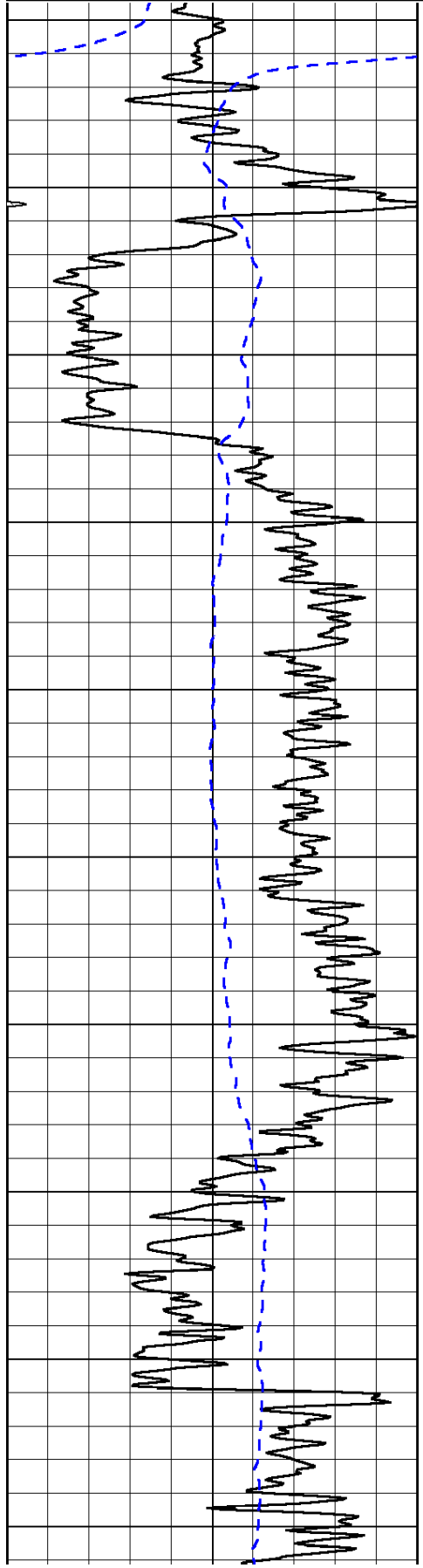
0	Gamma Ray	150
-200	SP (mV)	0

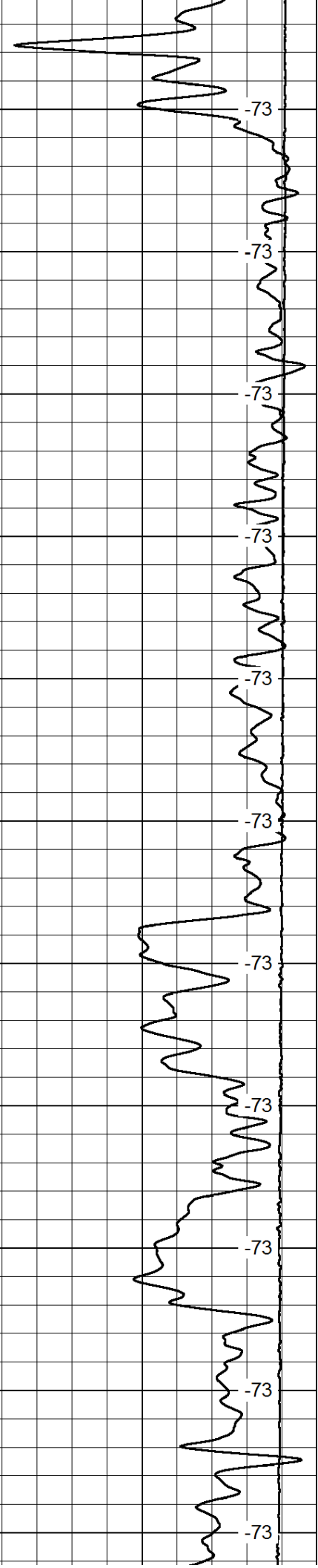
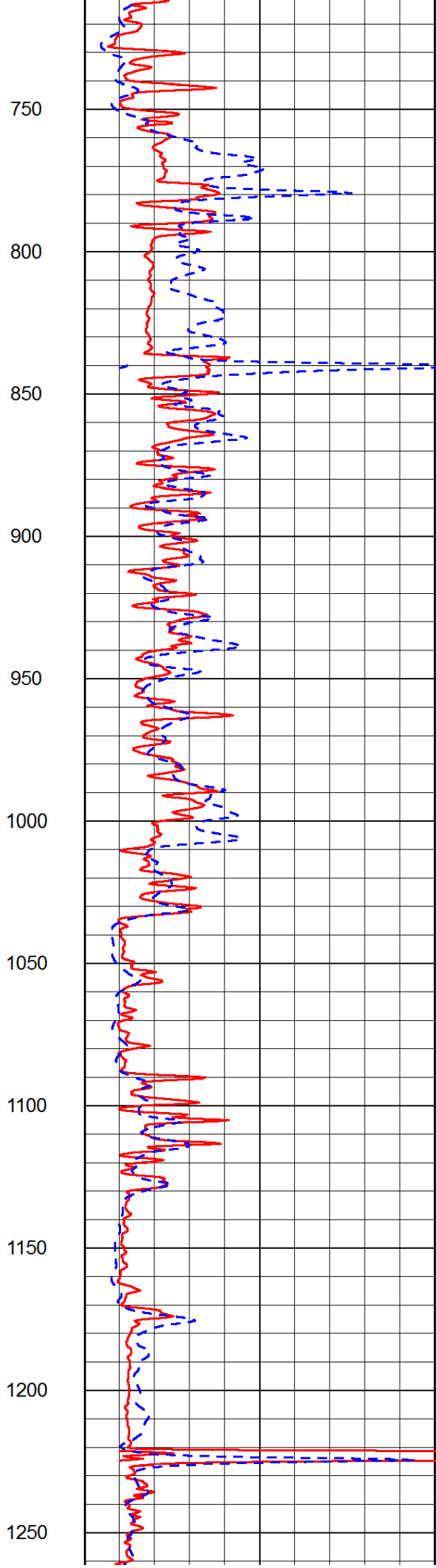
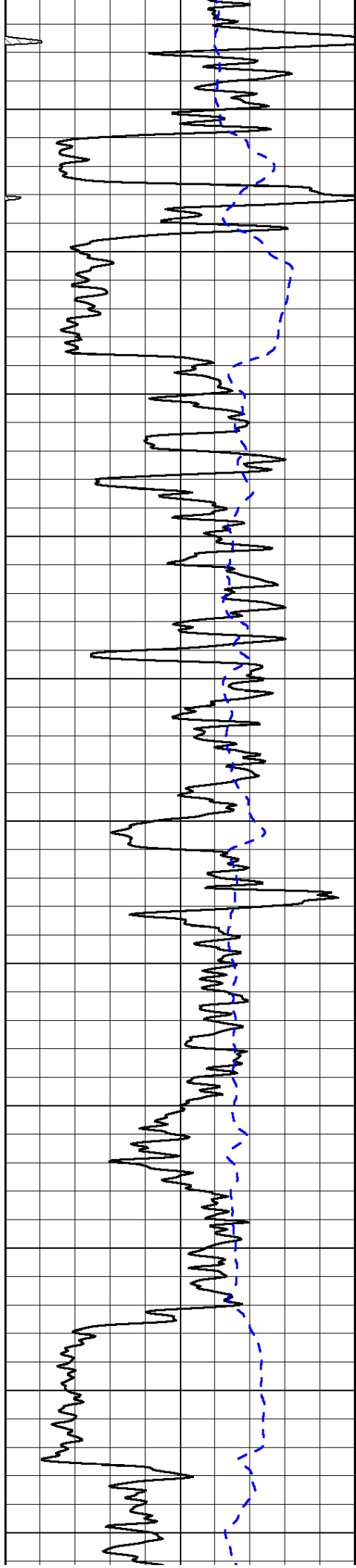
0	Shallow Resistivity	50
0	Deep Resistivity	50

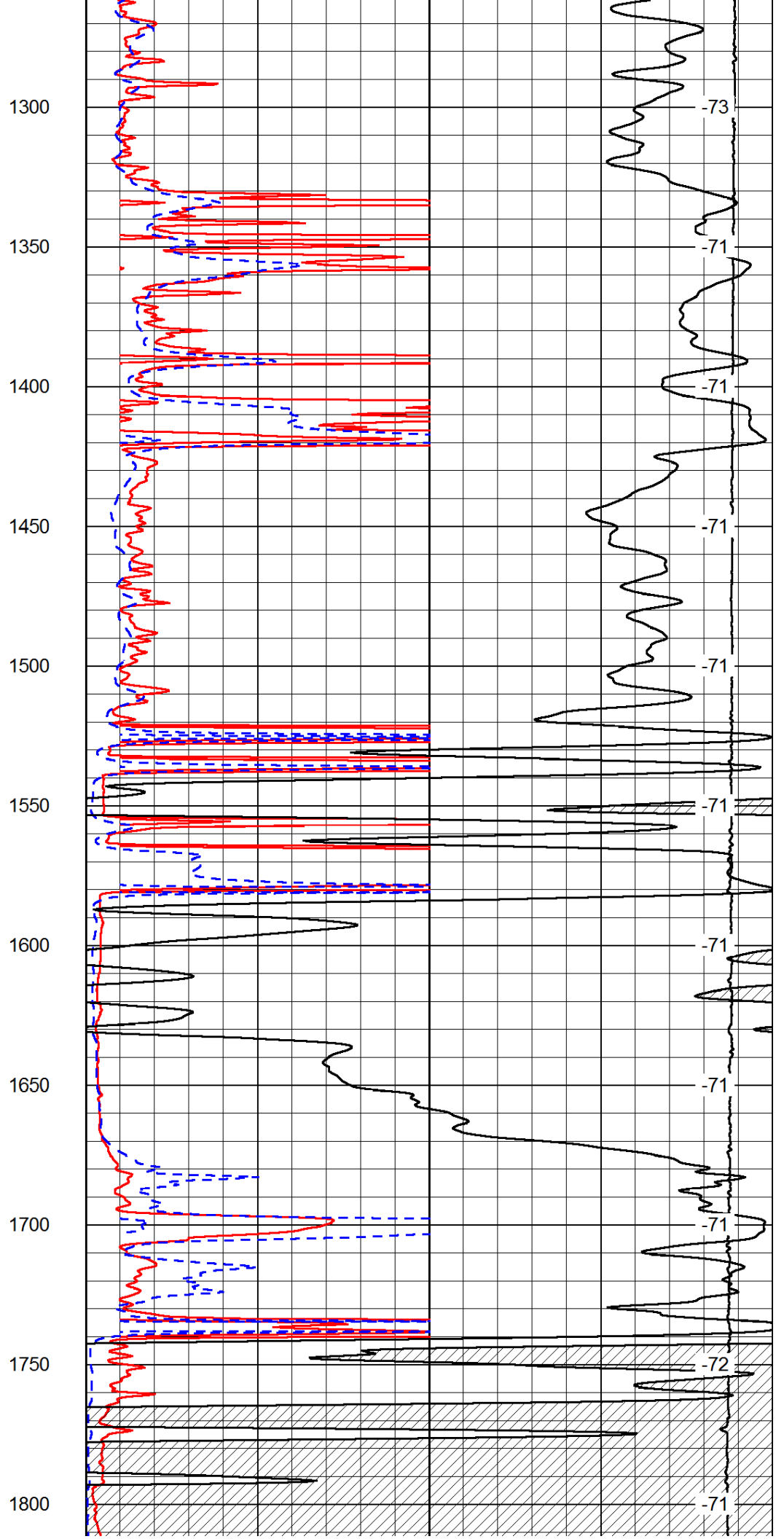
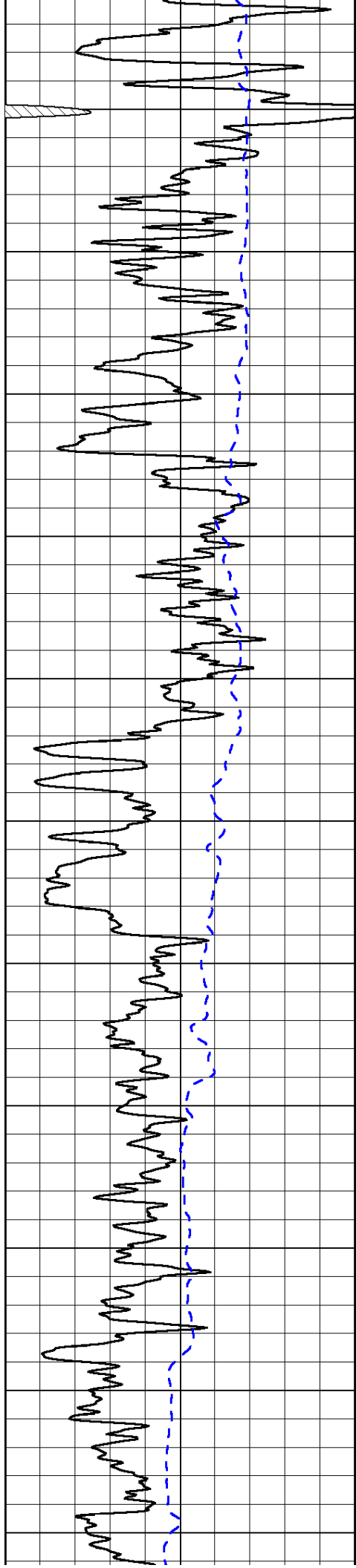
LSPD

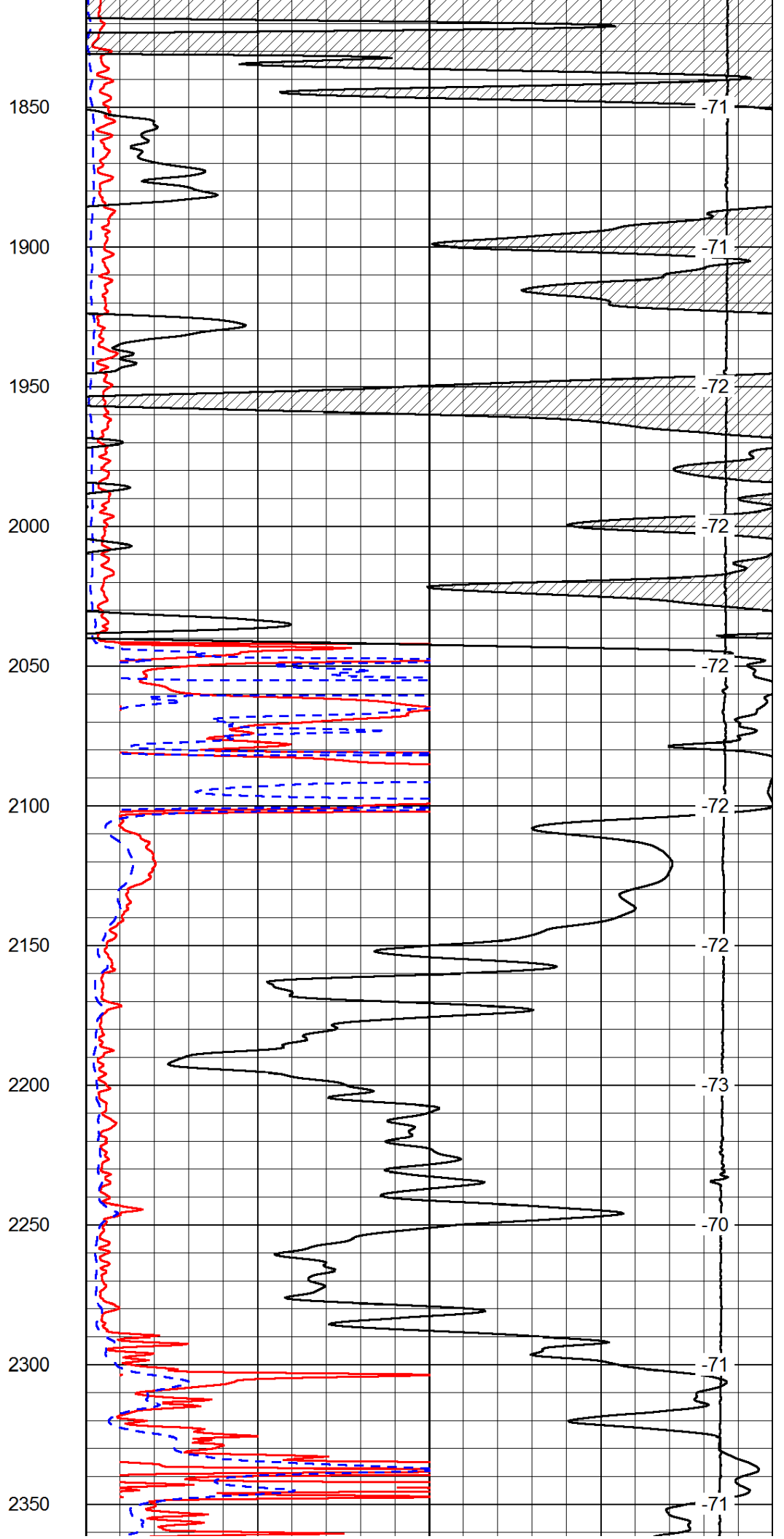
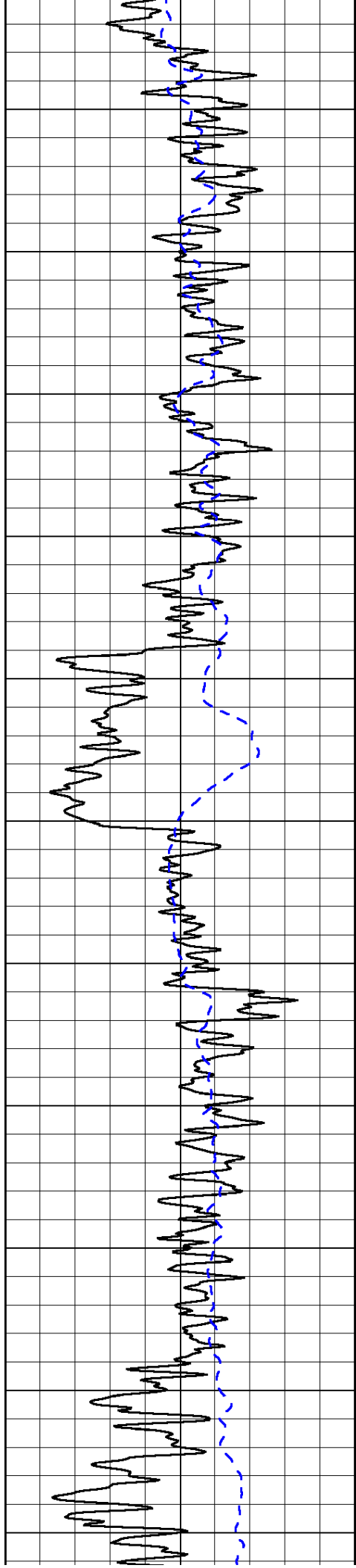
1000	Conductivity	0
15000	Line Tension	0

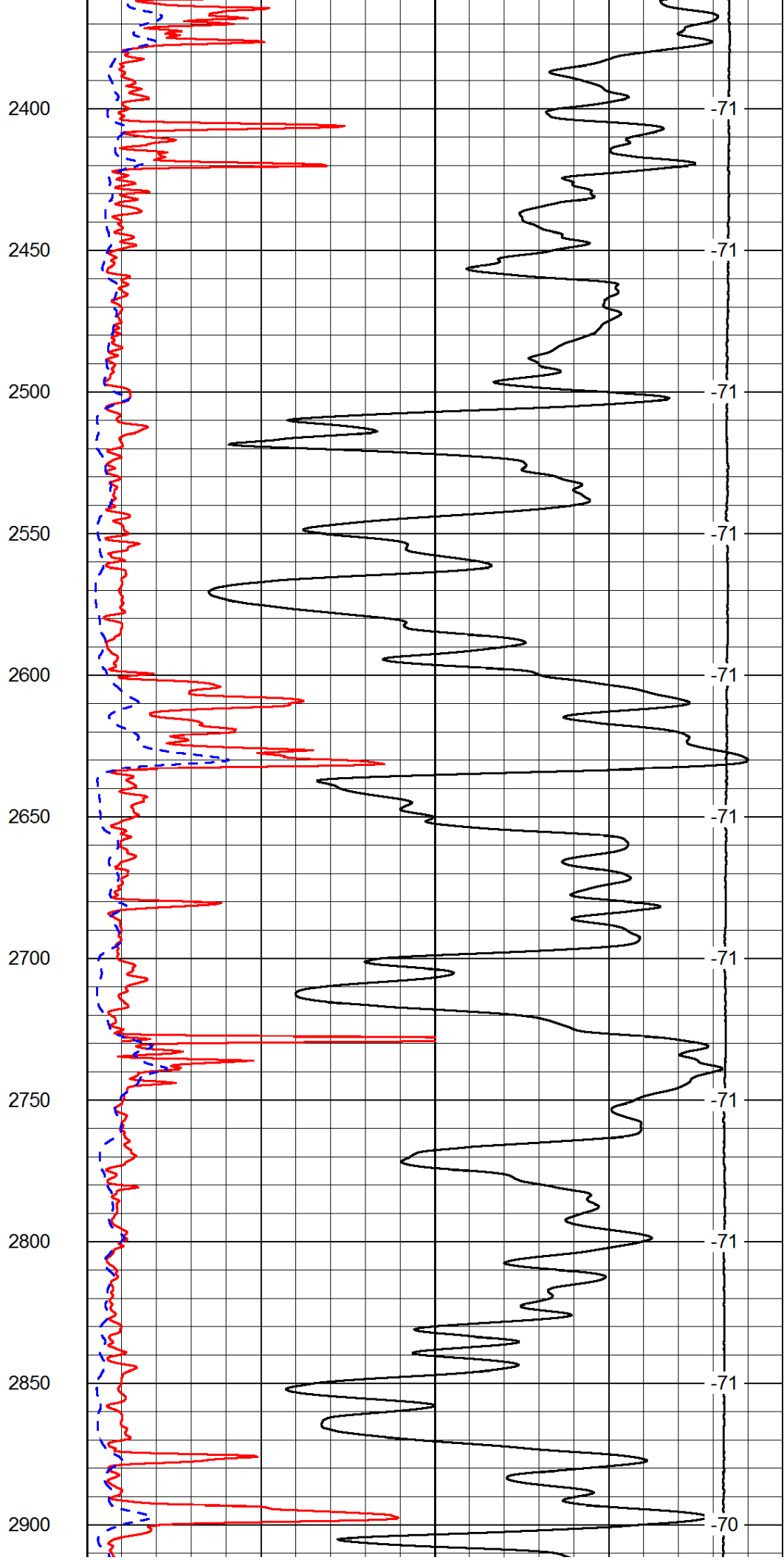
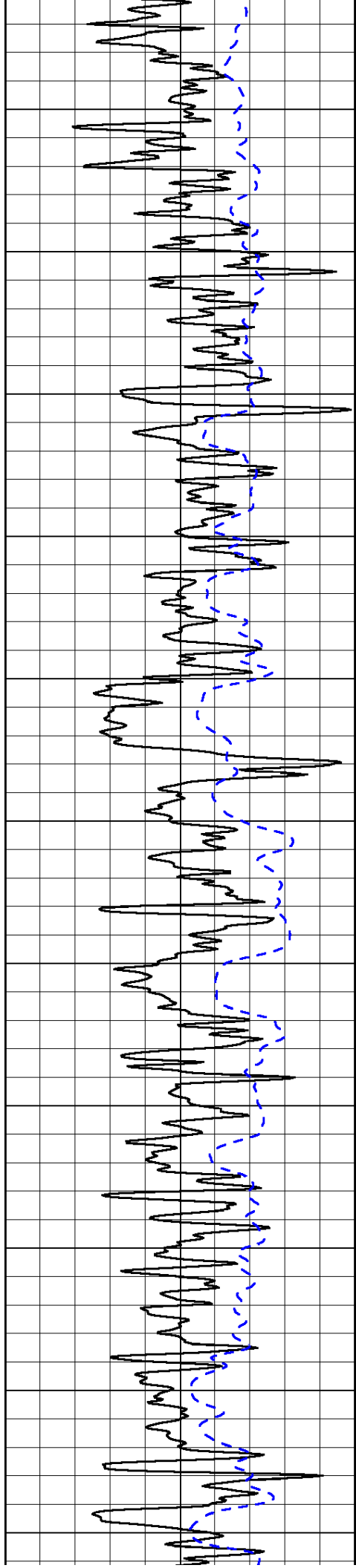
50	Shallow Resistivity	500
50	Deep Resistivity	500

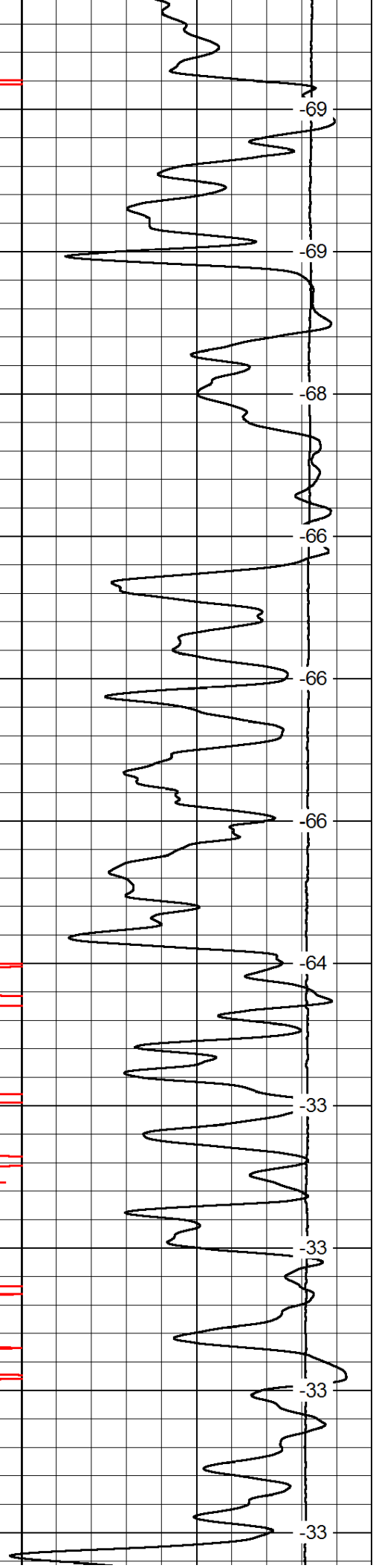
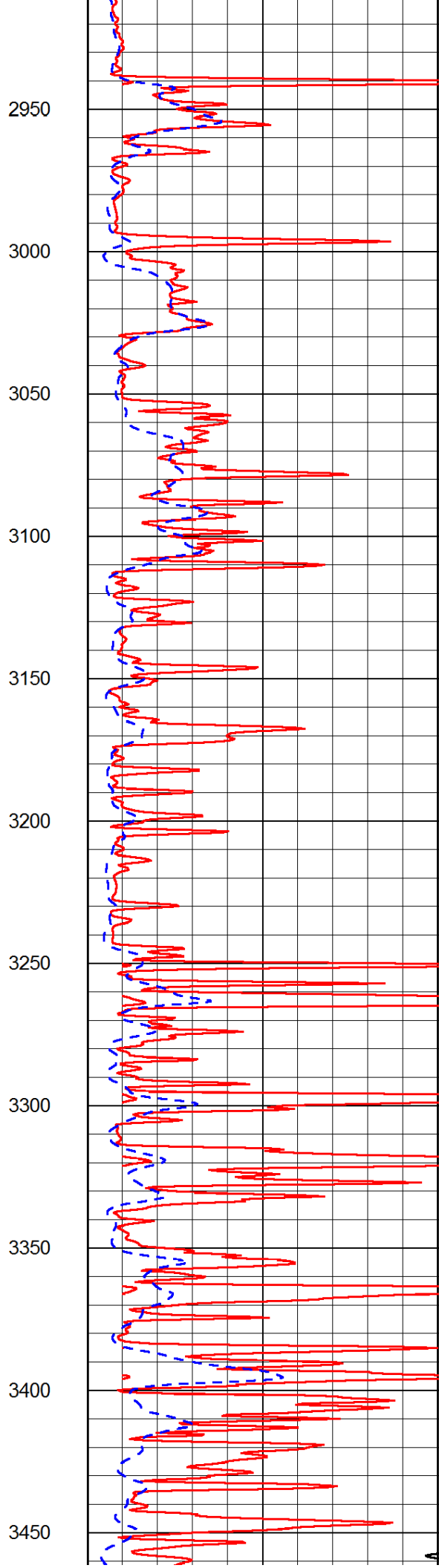
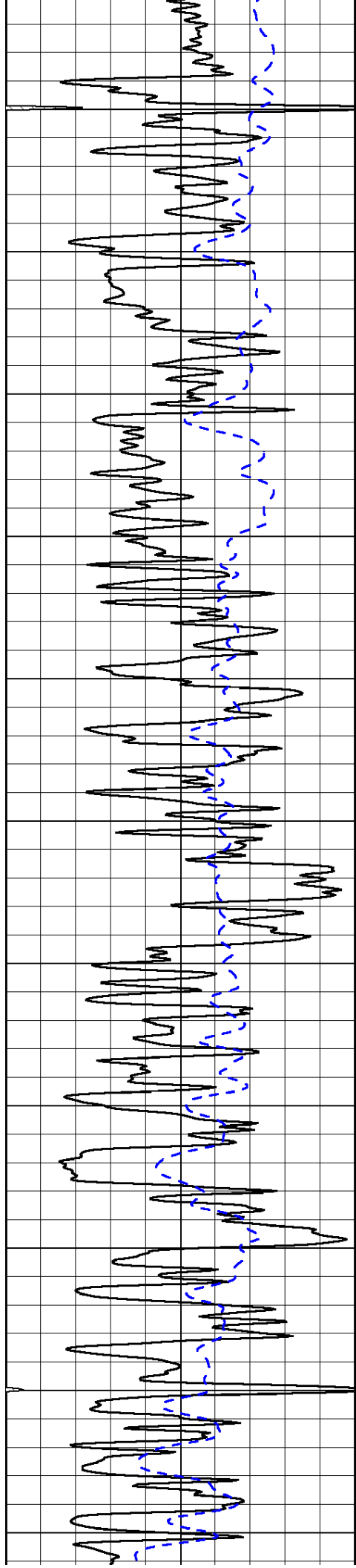


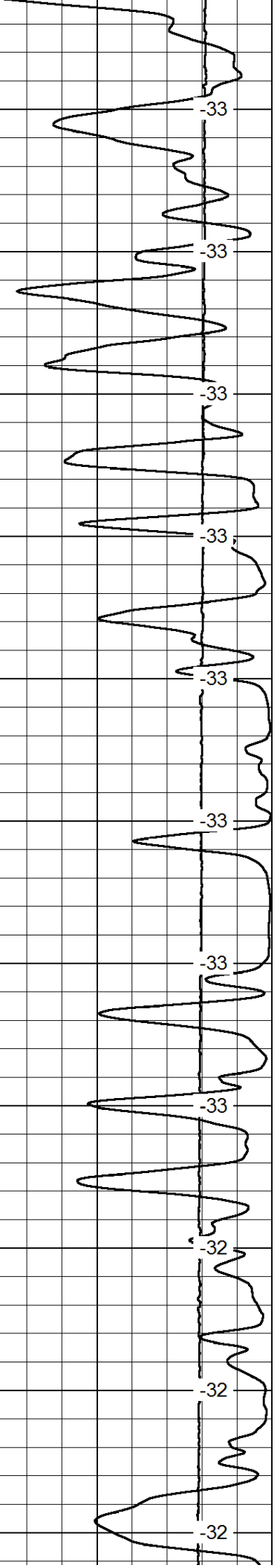
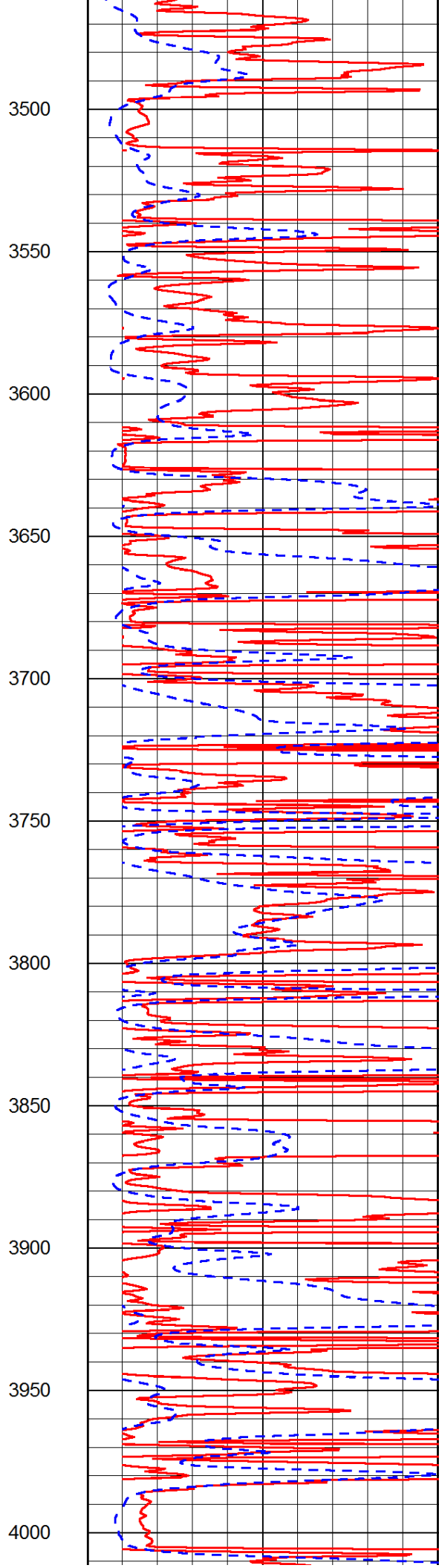
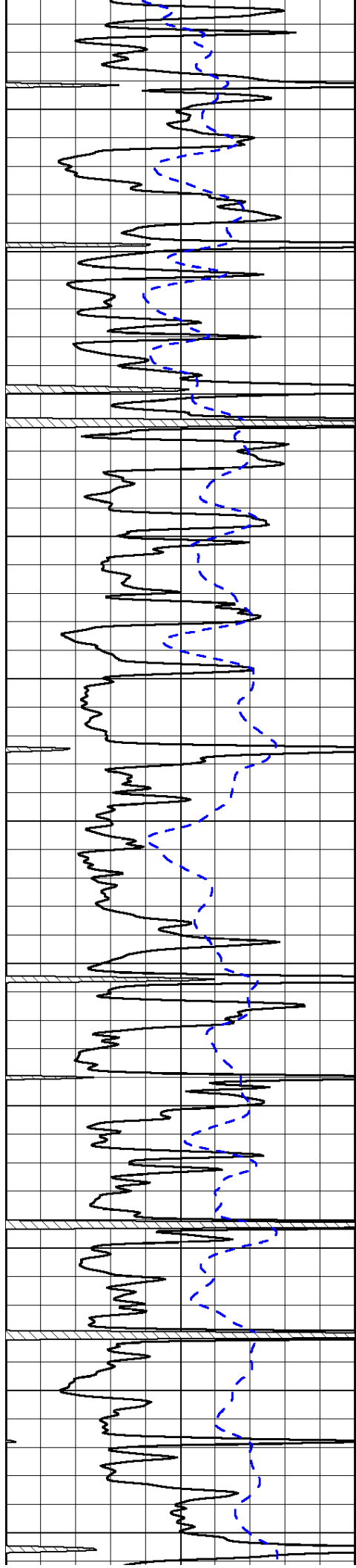


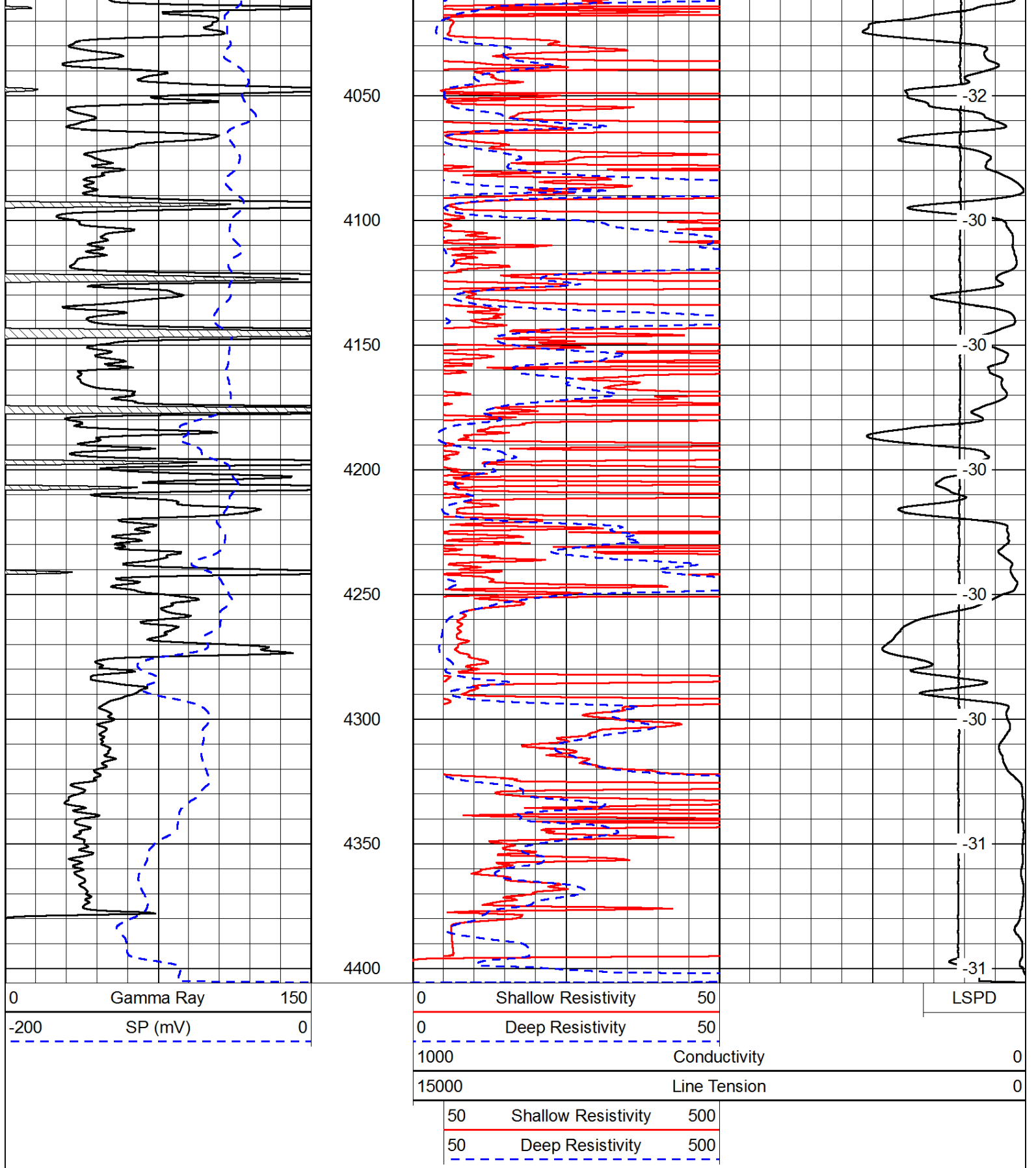




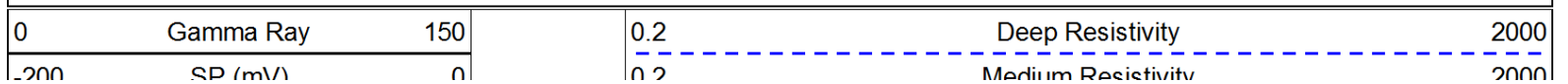








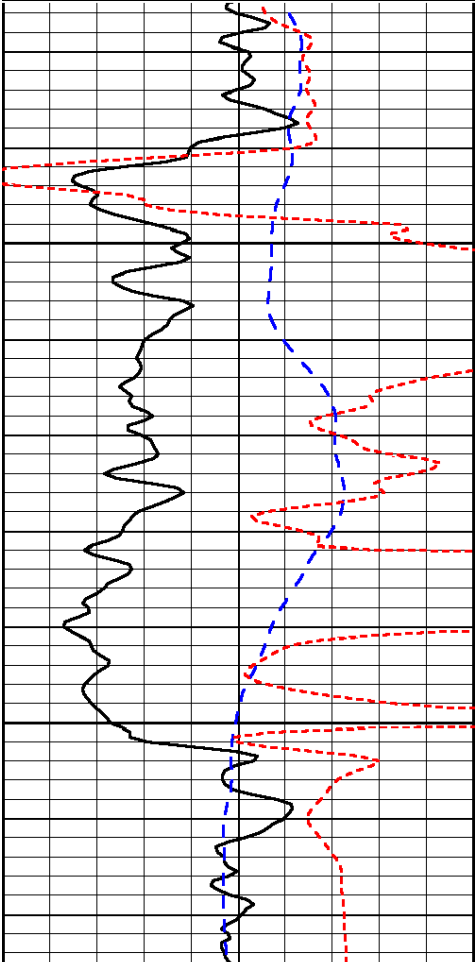
Database File: c:\warrior\data\black tea_krebs n #2\blacktea_krebs_n_2hd.db
 Dataset Pathname: dil/blckstck
 Presentation Format: dil
 Dataset Creation: Fri May 16 21:10:51 2014
 Charted by: Depth in Feet scaled 1:240



200	SP (mV)	0
-160	RxoRt	40

0.2	Medium Resistivity	2000
0.2	Shallow Resistivity	2000
15000	Line Tension	0

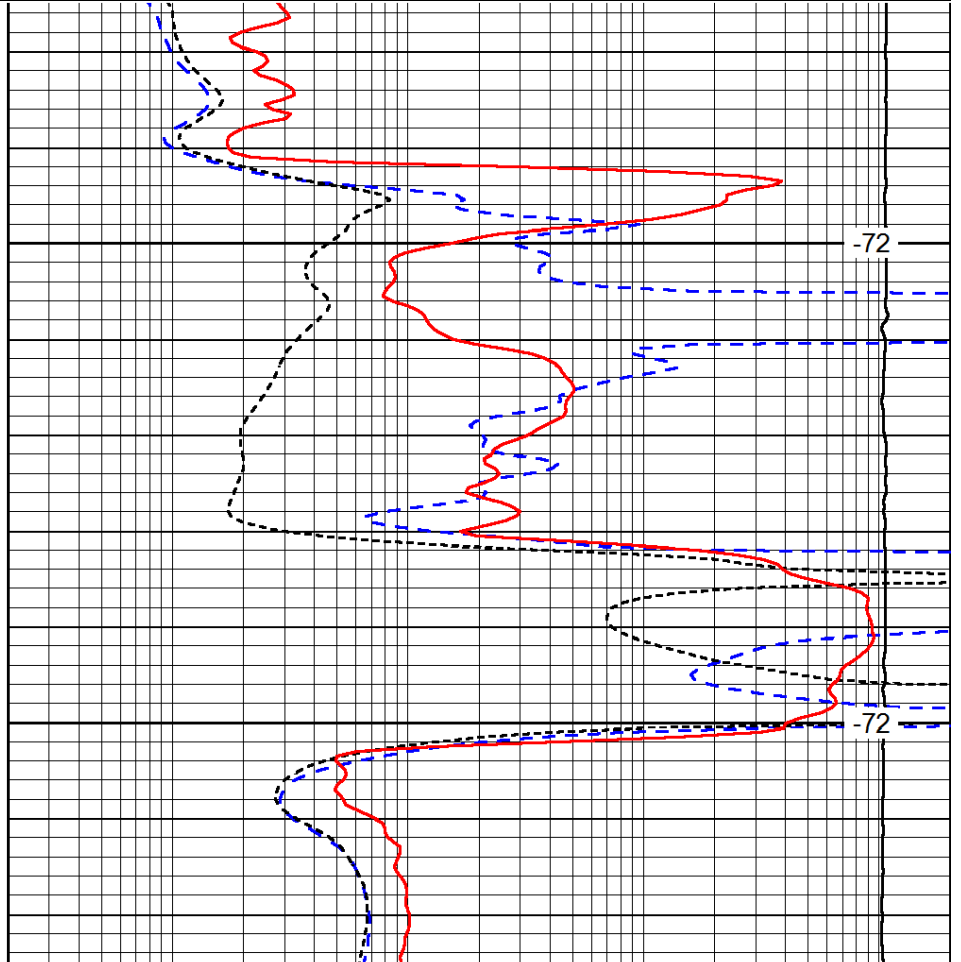
LSPD



2050

2100

0	Gamma Ray	150
-200	SP (mV)	0
-160	RxoRt	40



-72

-72

0.2	Deep Resistivity	2000
0.2	Medium Resistivity	2000
0.2	Shallow Resistivity	2000
15000	Line Tension	0

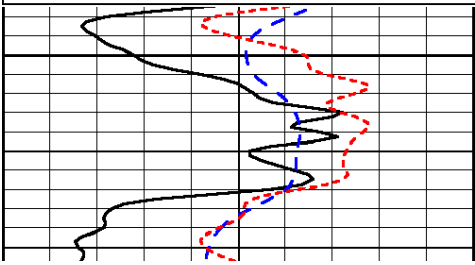
LSPD

Database File: c:\warrior\data\black tea_krebs n #2\blacktea_krebs_n_2hd.db
 Dataset Pathname: dil/blckstck
 Presentation Format: dil
 Dataset Creation: Fri May 16 21:10:51 2014
 Charted by: Depth in Feet scaled 1:240

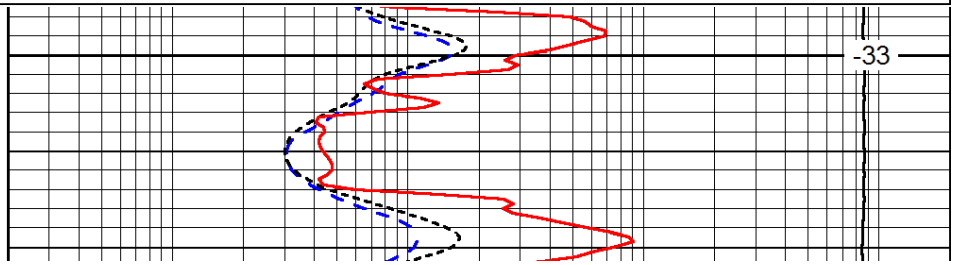
0	Gamma Ray	150
-200	SP (mV)	0
-160	RxoRt	40

0.2	Deep Resistivity	2000
0.2	Medium Resistivity	2000
0.2	Shallow Resistivity	2000
15000	Line Tension	0

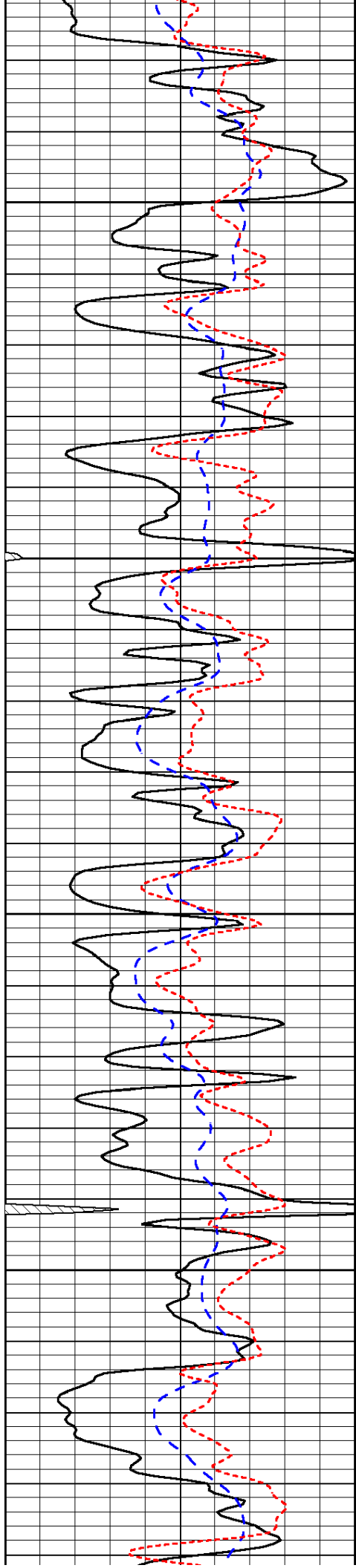
LSPD



3300



-33

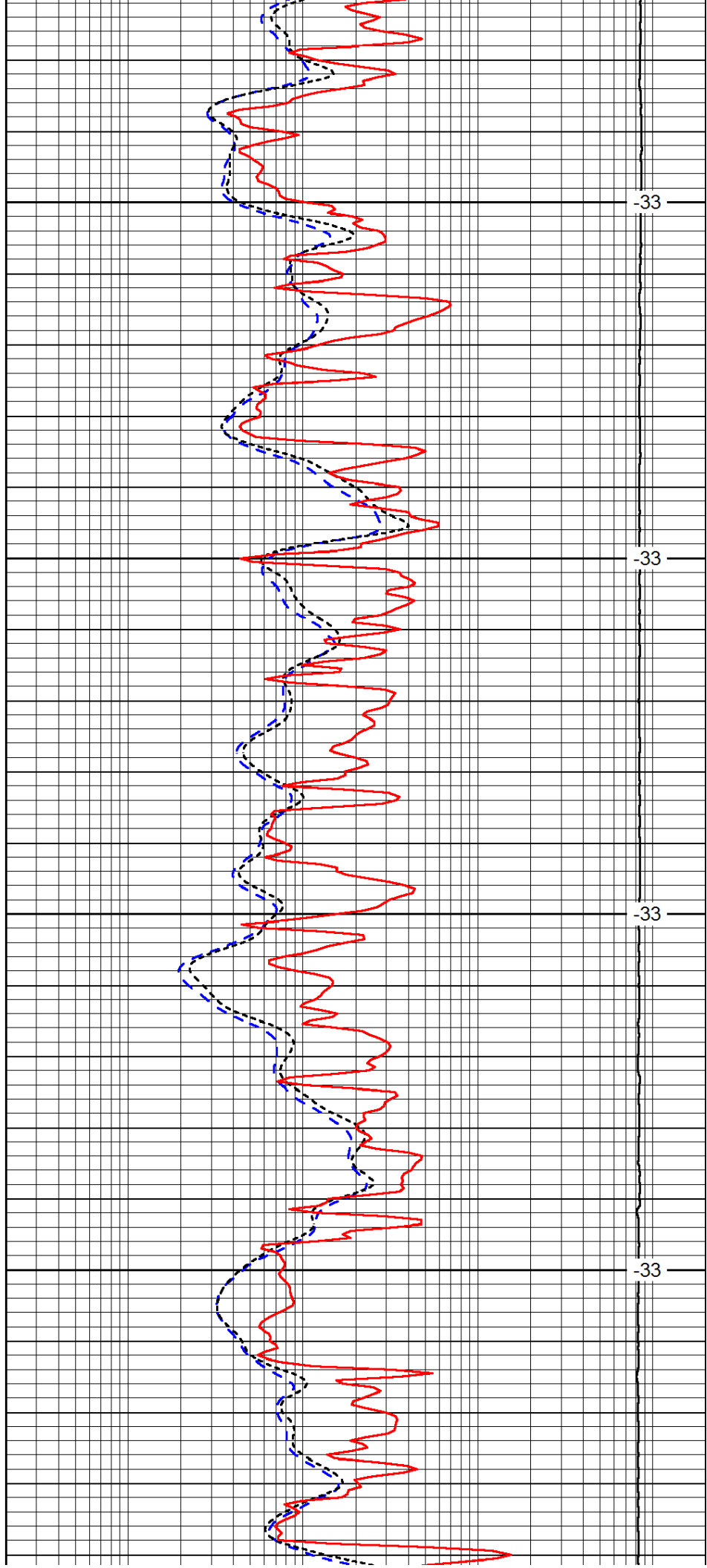


3350

3400

3450

3500

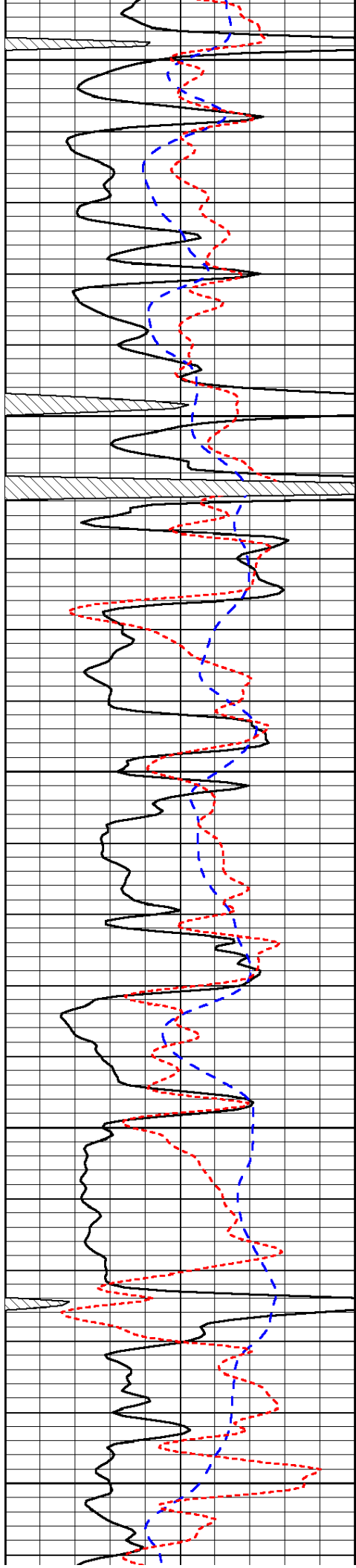


-33

-33

-33

-33



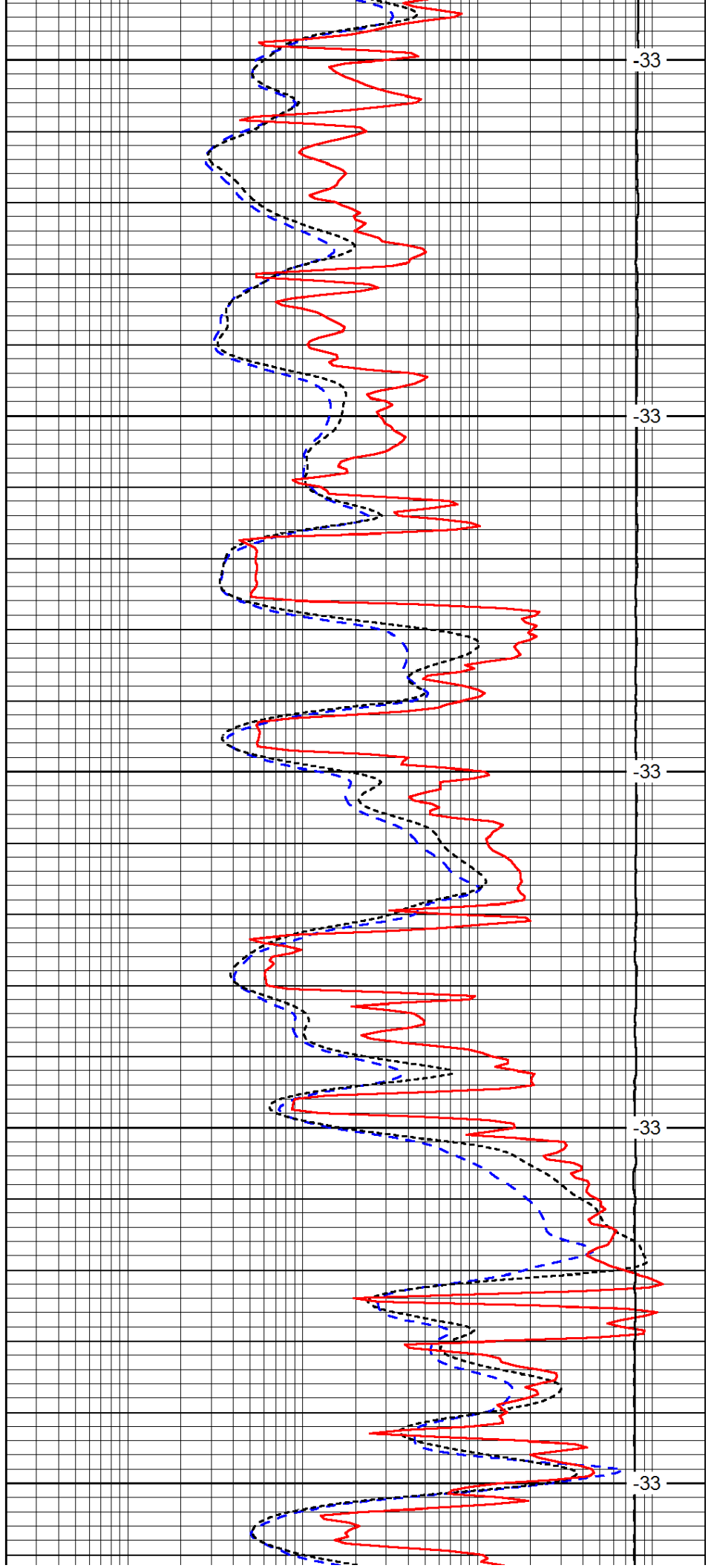
3550

3600

3650

3700

3750



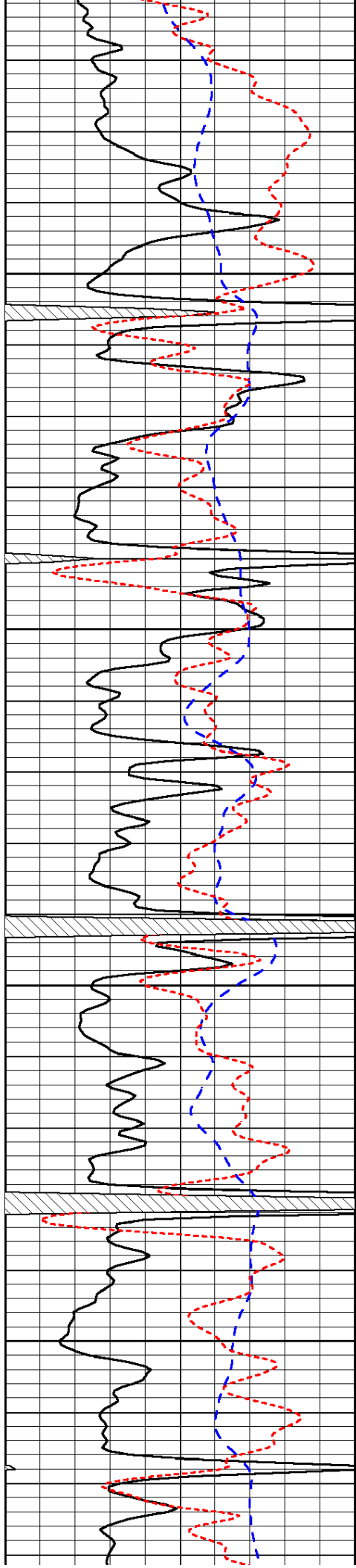
-33

-33

-33

-33

-33

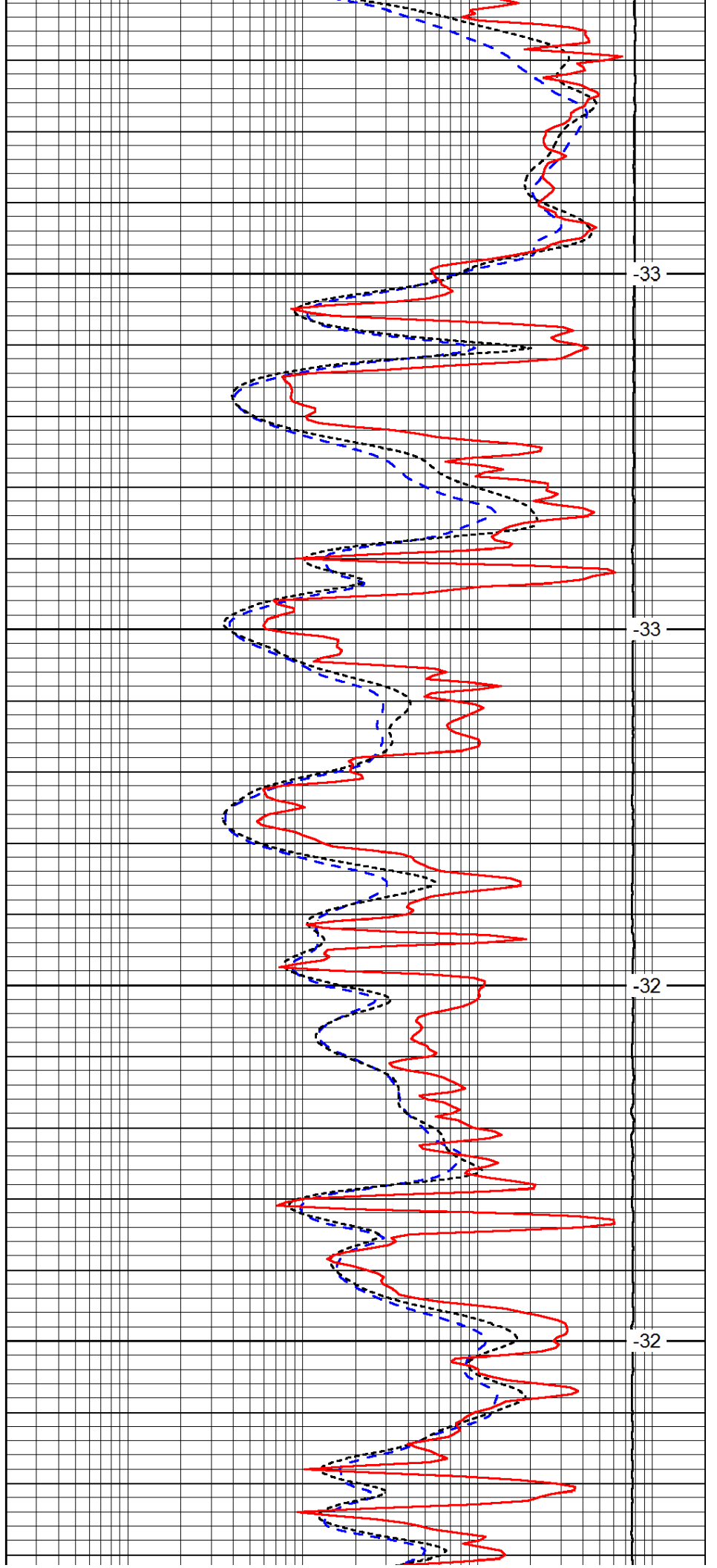


3800

3850

3900

3950

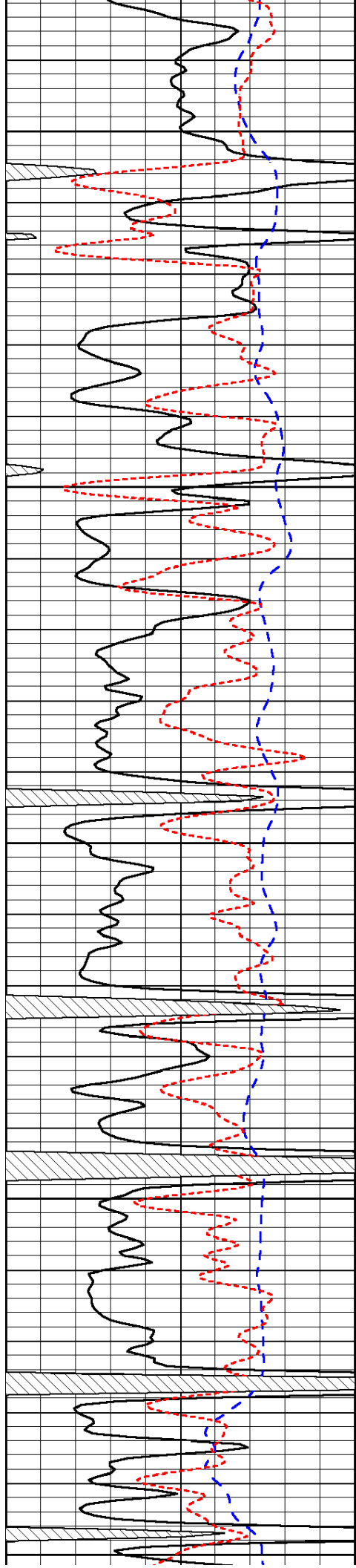


-33

-33

-32

-32



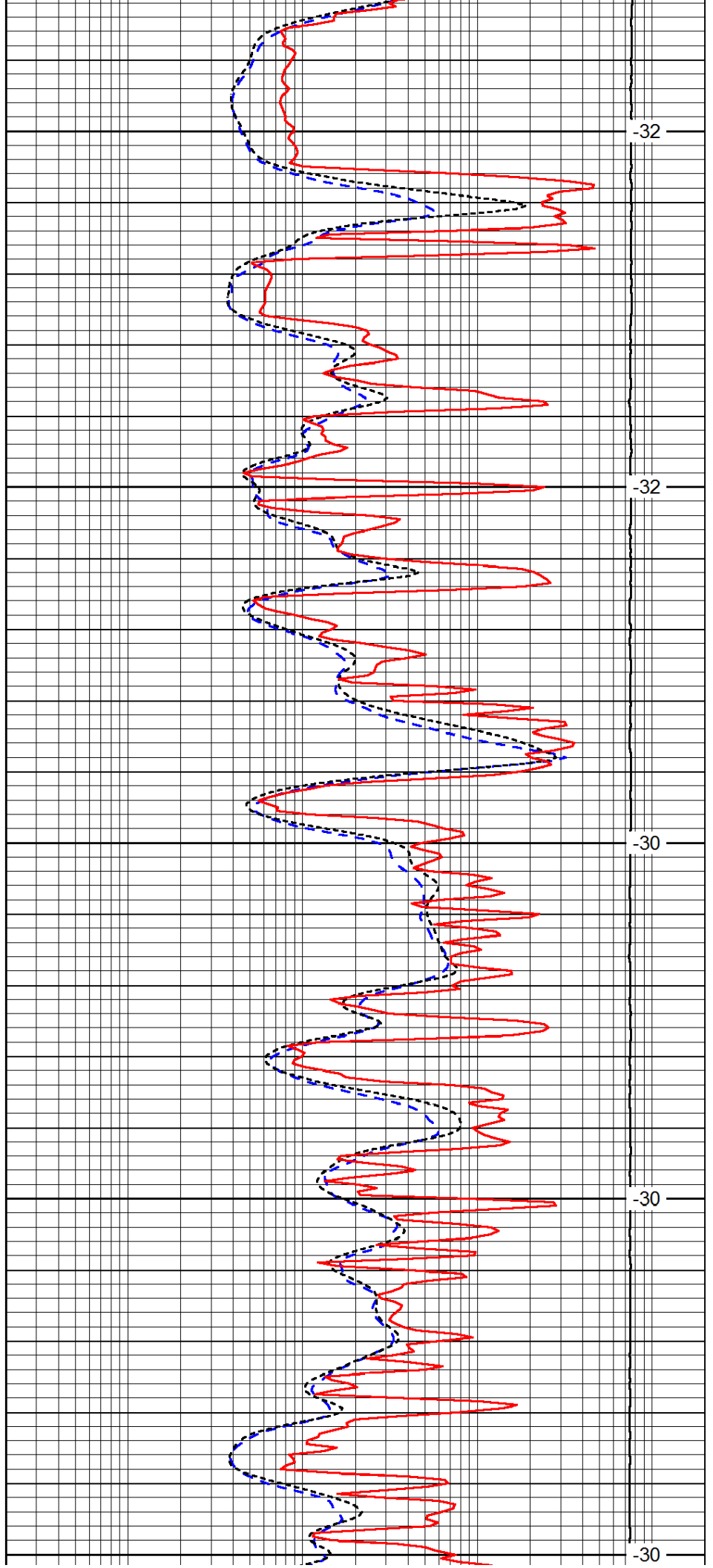
4000

4050

4100

4150

4200



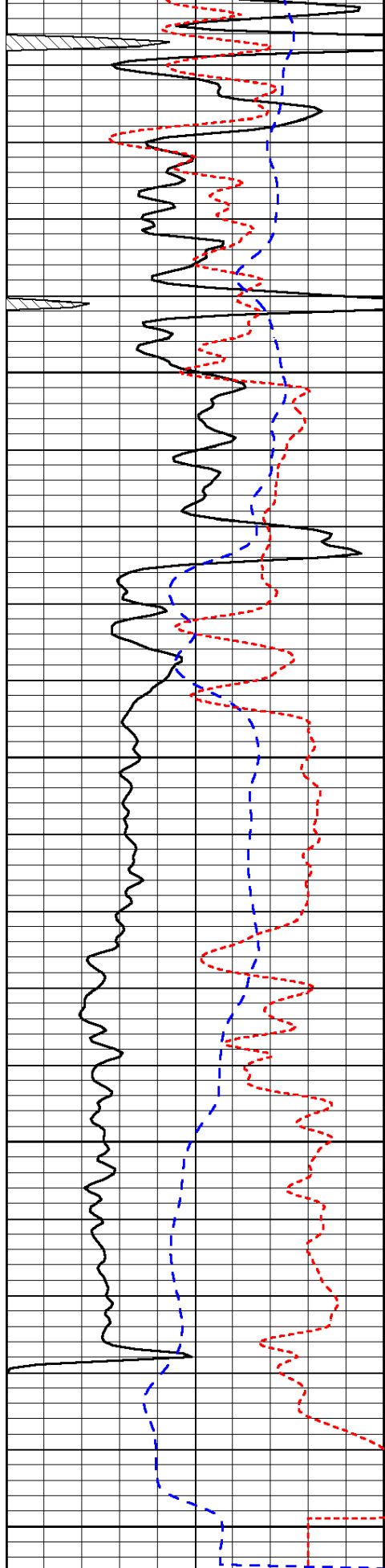
-32

-32

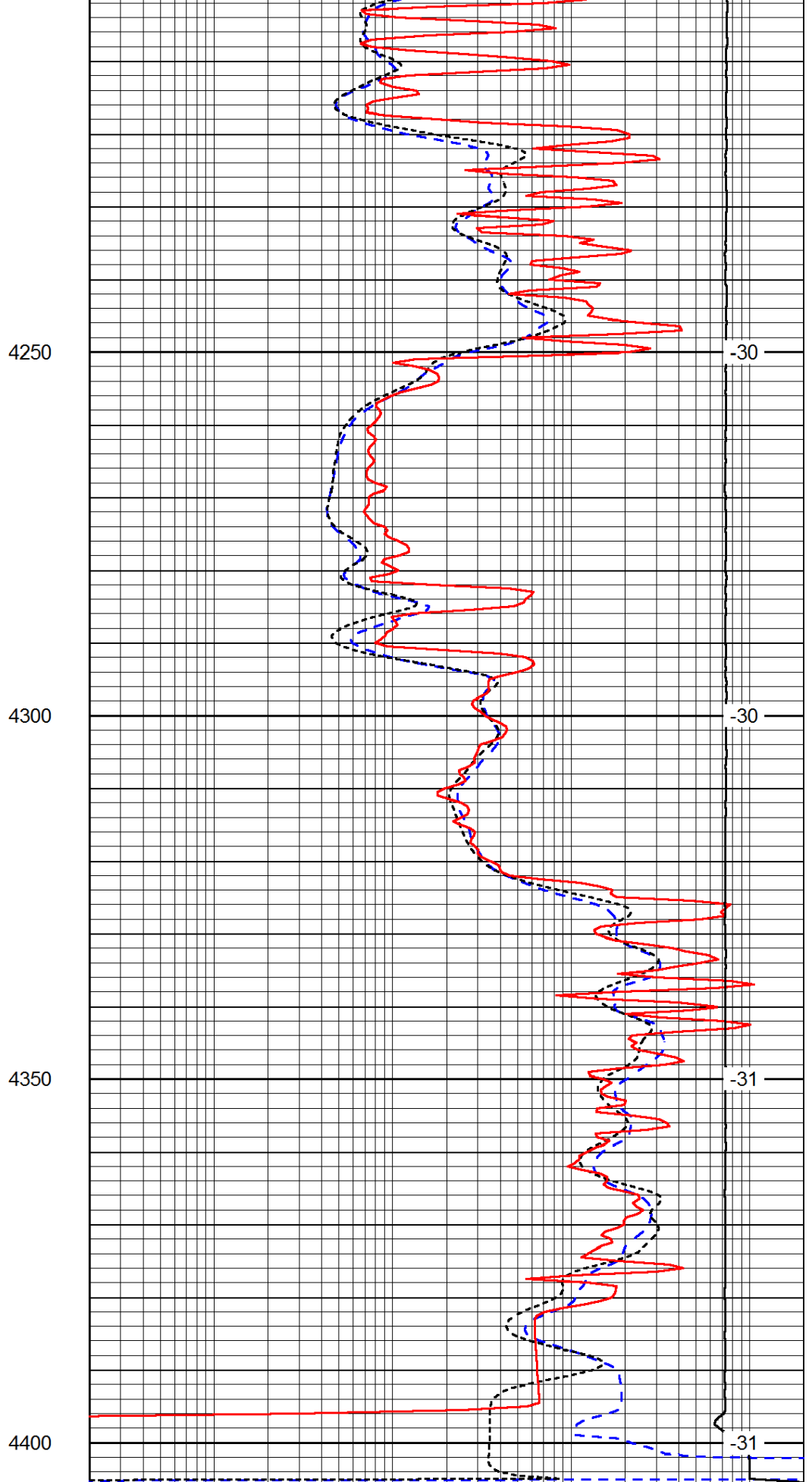
-30

-30

-30



0	Gamma Ray	150
-200	SP (mV)	0
-160	RxoRt	40



0.2	Deep Resistivity	2000
0.2	Medium Resistivity	2000
0.2	Shallow Resistivity	2000

15000

Line tension

0

LSPD