



Pioneer Energy Services

# Microresistivity Log

15-109-21,268-00-00

API No.

Company **Black Tea Oil, LLC**

Well **Krebs N #2**

Field

County **Logan**

State

**Kansas**

Location

**W2 NE NW SW  
2,310' FSL & 910' FWL**

Sec: **27**

Twp: **14S**

Rge: **32W**

Other Services  
CNL/CDL  
DIL/BHCS

Elevation

**K.B. 2650  
D.F. 2641  
G.L. 2641**

Permanent Datum **Ground Level**

Log Measured From **Kelly Bushing**

Drilling Measured From **Kelly Bushing**

**9 Ft. Above Perm. Datum**

Date

**5/16/2014**

Run Number

**Two**

Depth Driller

**4400**

Depth Logger

**4399**

Bottom Logged Interval

**4398**

Top Log Interval

**3300**

Casing Driller

**8.625 @ 265**

Casing Logger

**262**

Bit Size

**7.875**

Type Fluid in Hole

**Chemical**

Salinity, ppm CL

**1000**

Density / Viscosity

**8.8 52  
10.5 8.0**

pH / Fluid Loss

**10.5 8.0**

Source of Sample

**Flowline**

Rm @ Meas. Temp

**1.10 @ 84**

Rmf @ Meas. Temp

**.83 @ 84**

Rmc @ Meas. Temp

**1.49 @ 84**

Source of Rmf / Rmc

**Charts**

Rm @ BHT

**.77 @ 120**

Operating Rig Time

**4 Hours**

Max Rec. Temp. F

**120**

Equipment Number

**108**

Location

**Hays**

Recorded By

**J. Long**

Witnessed By

**Kevin Bailey**

<<< Fold Here >>>

All interpretations are opinions based on inferences from electrical or other measurements and we cannot and do not guarantee the accuracy or correctness of any interpretation, and we shall not, except in the case of gross or willful negligence on our part, be liable or responsible for any loss, costs, damages, or expenses incurred or sustained by anyone resulting from any interpretation made by any of our officers, agents or employees. These interpretations are also subject to our general terms and conditions set out in our current Price Schedule.

### Comments

Thank you for using Pioneer Energy Services  
[www.pioneerenergy.com](http://www.pioneerenergy.com)  
 785 625 3858

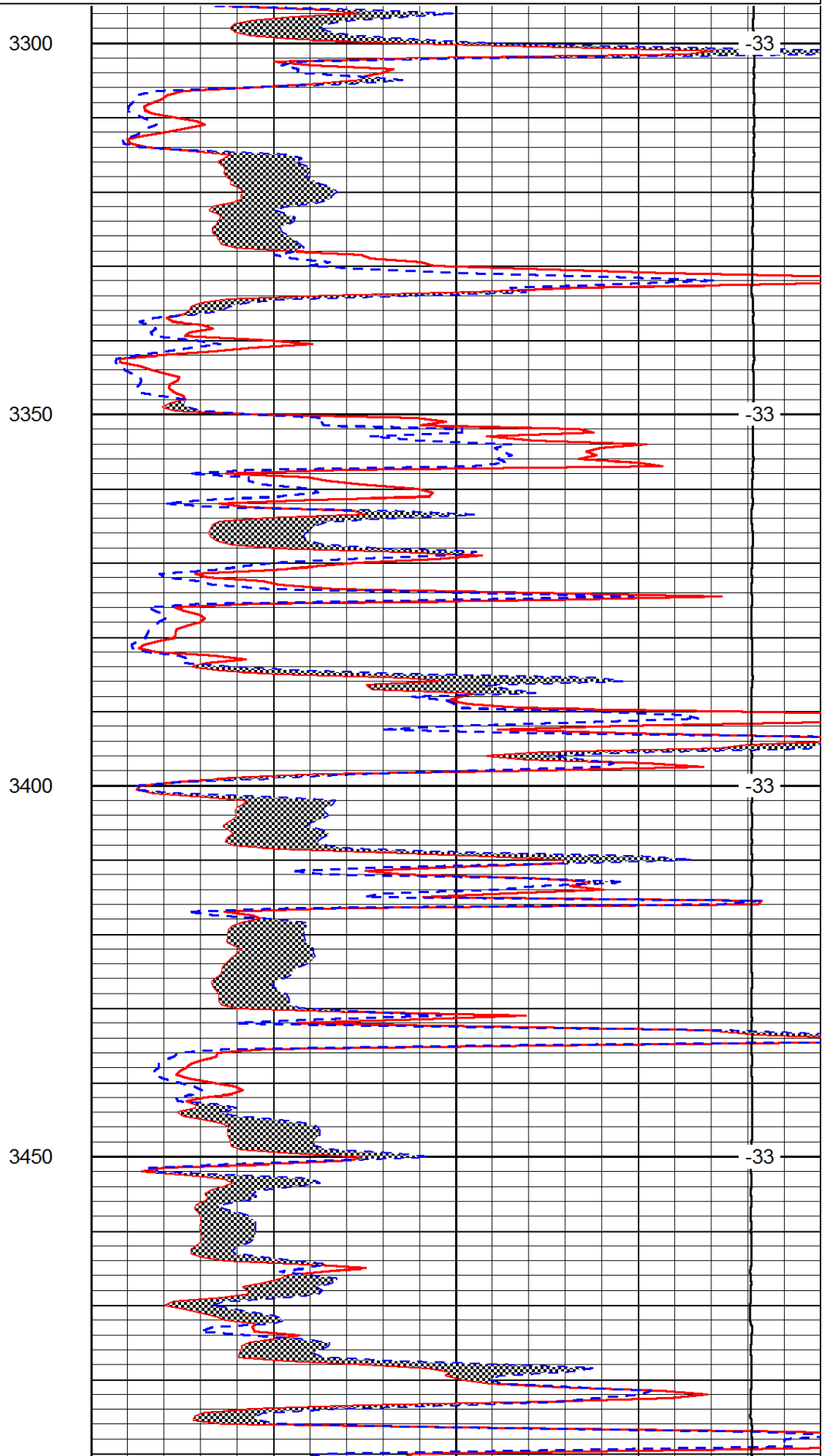
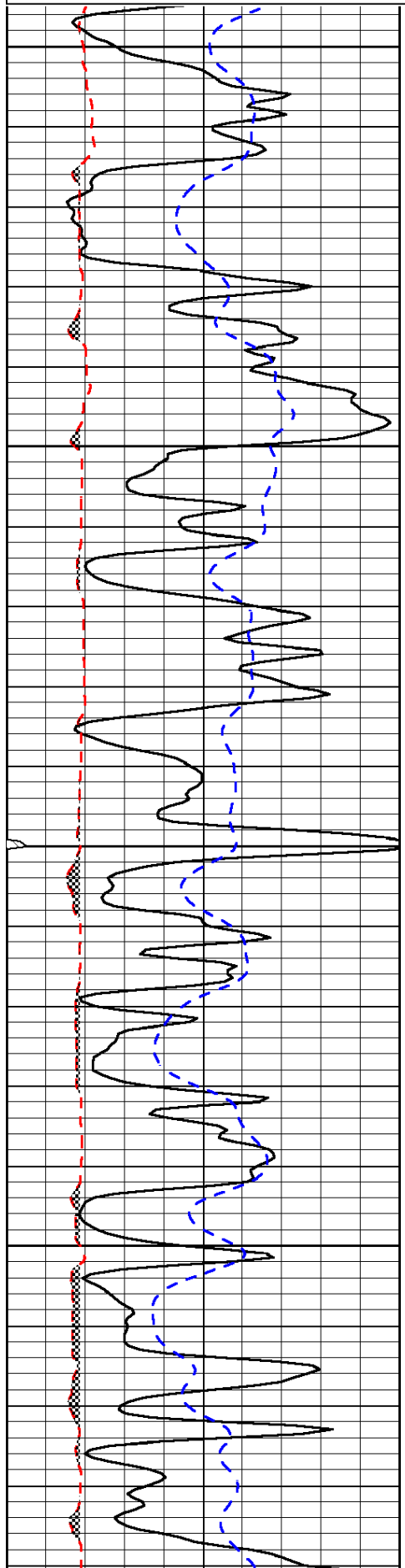
Oakley, South to Jayhawk Road, 1 South, West Into

Database File: c:\warrior\data\black tea\_krebs n #2\blacktea\_krebs\_n\_2hd.db  
 Dataset Pathname: dil/blckstck  
 Presentation Format: micro  
 Dataset Creation: Fri May 16 21:10:51 2014  
 Charted by: Depth in Feet scaled 1:240

0	Gamma Ray	150
6	Micro Log Caliper (GAPI)	16
-200	SP (mV)	0

0	Micro Inverse 1 X 1	40
0	Micro Normal 2"	40
15000	Line Weight	0

LSPD



3300

-33

3350

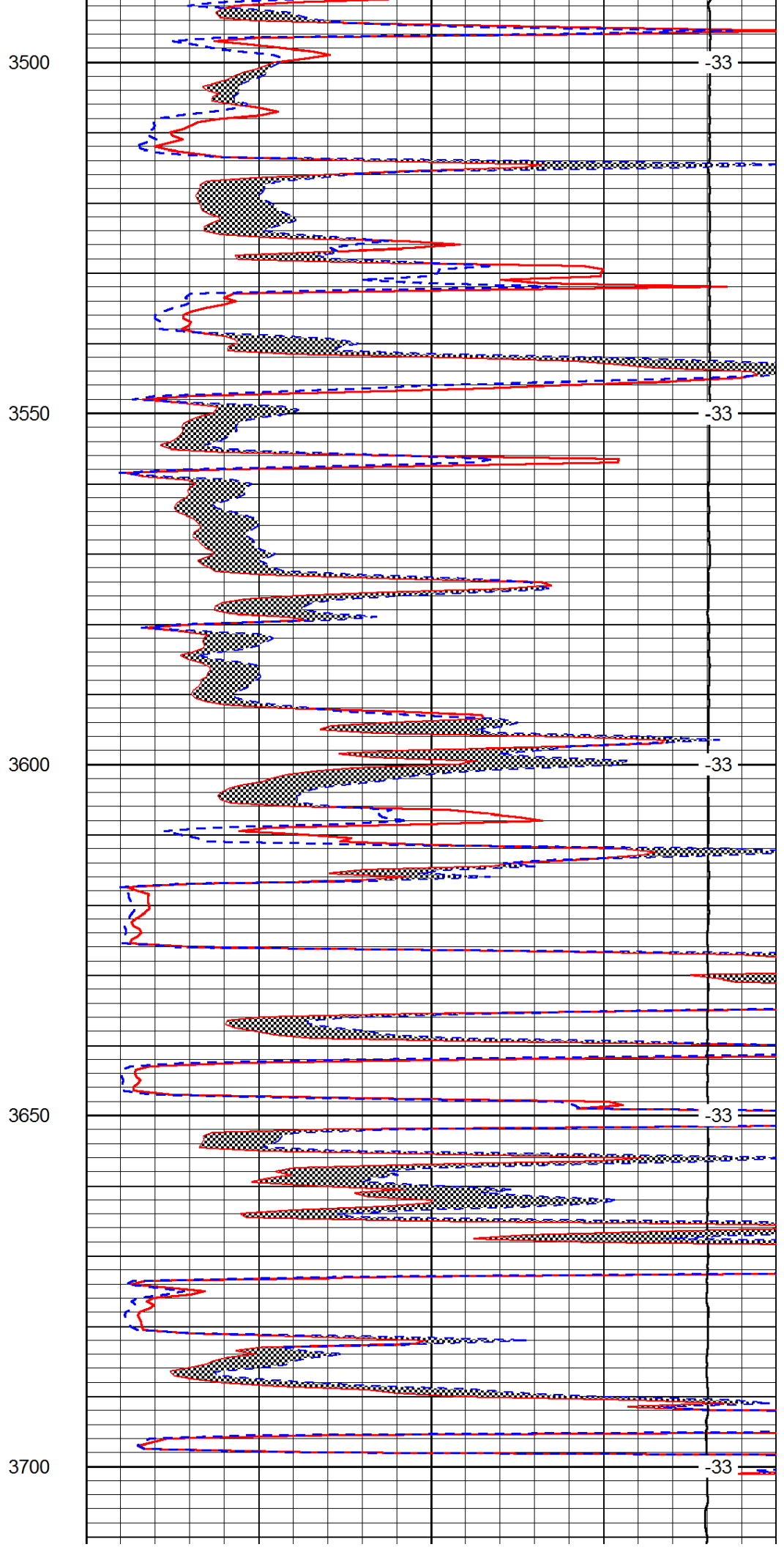
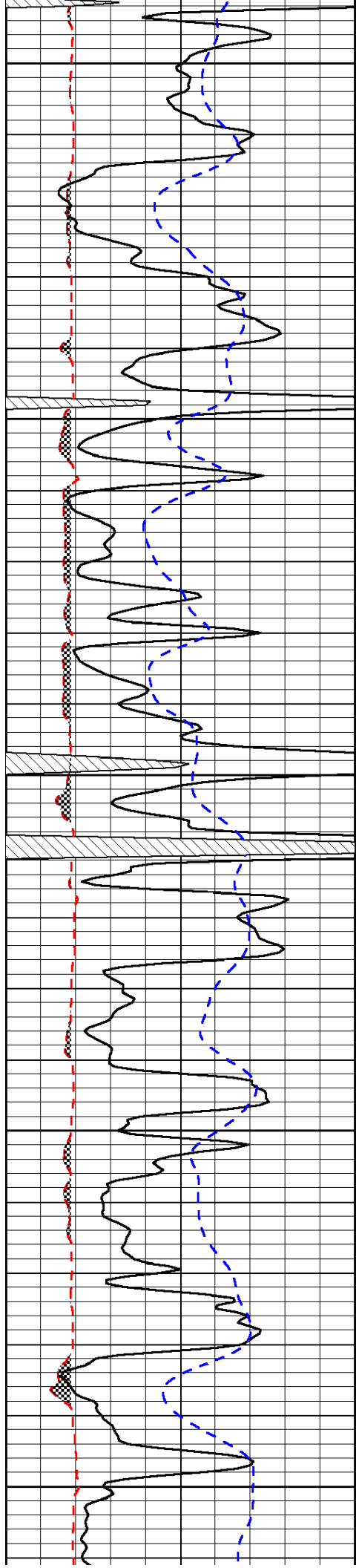
-33

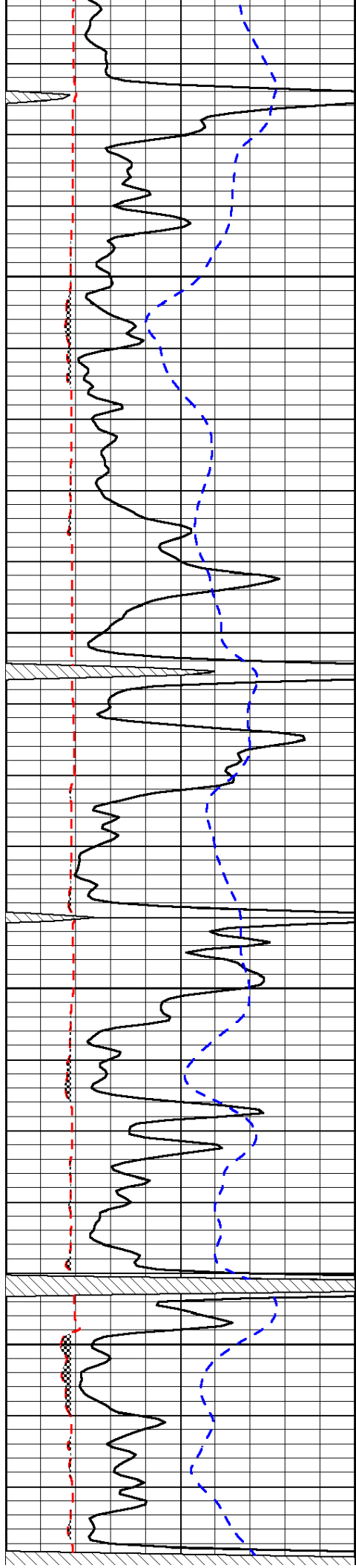
3400

-33

3450

-33



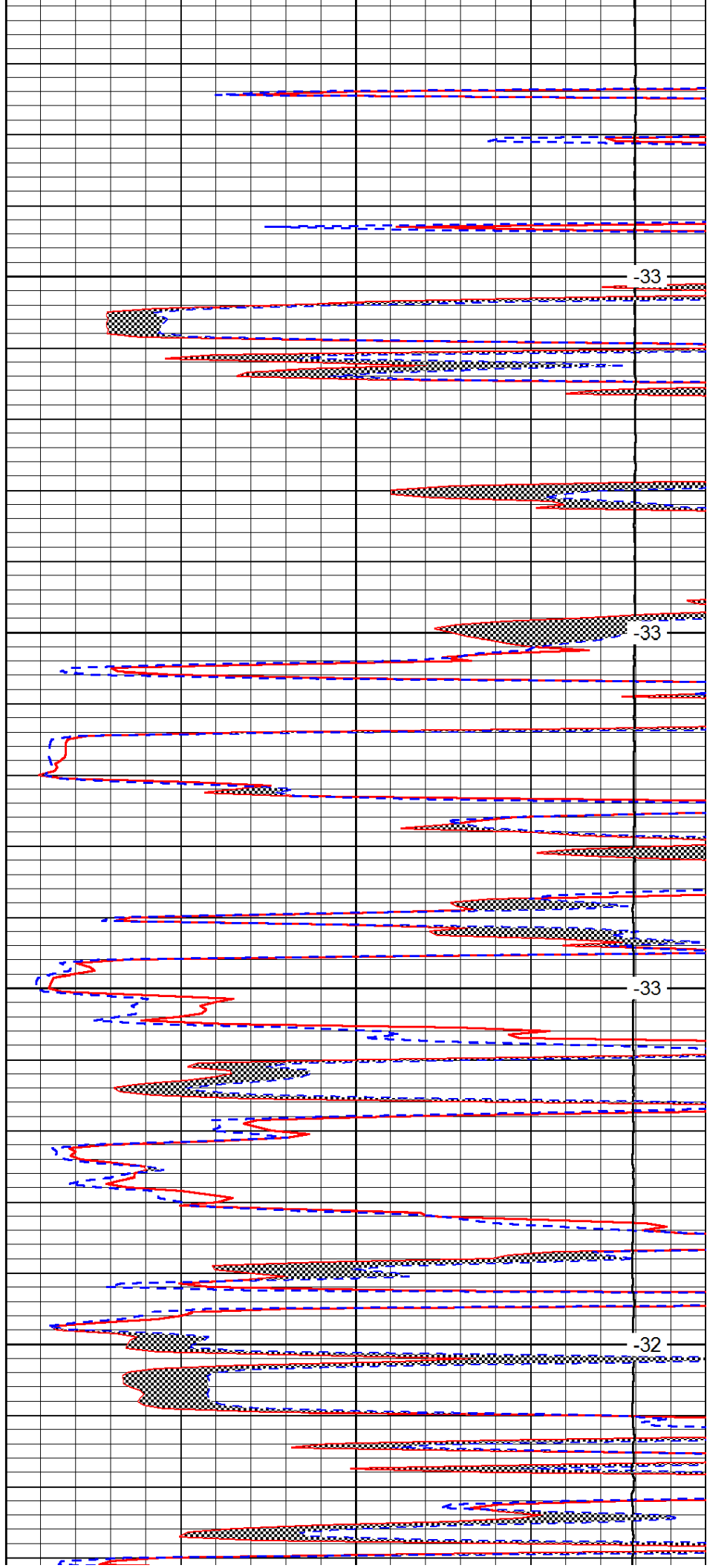


3750

3800

3850

3900

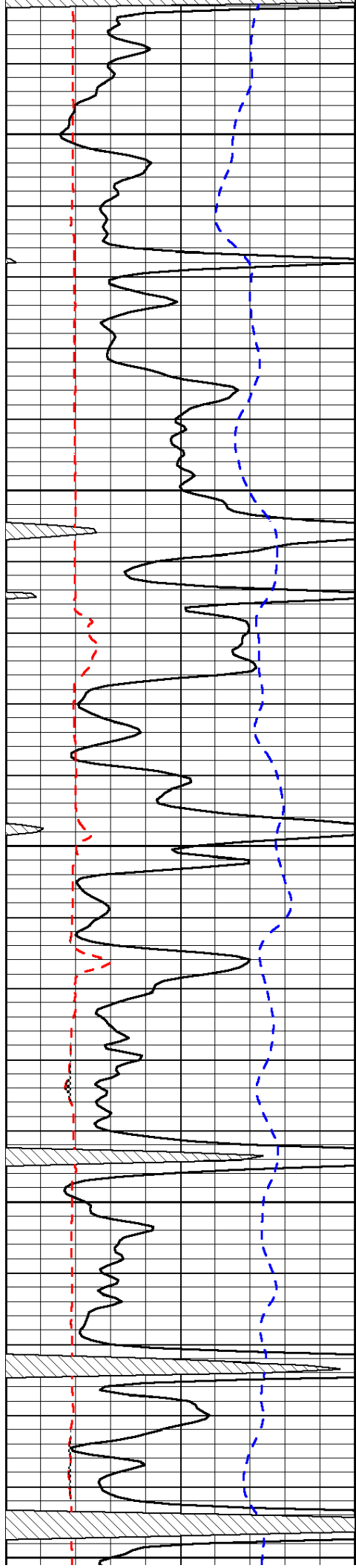


-33

-33

-33

-32



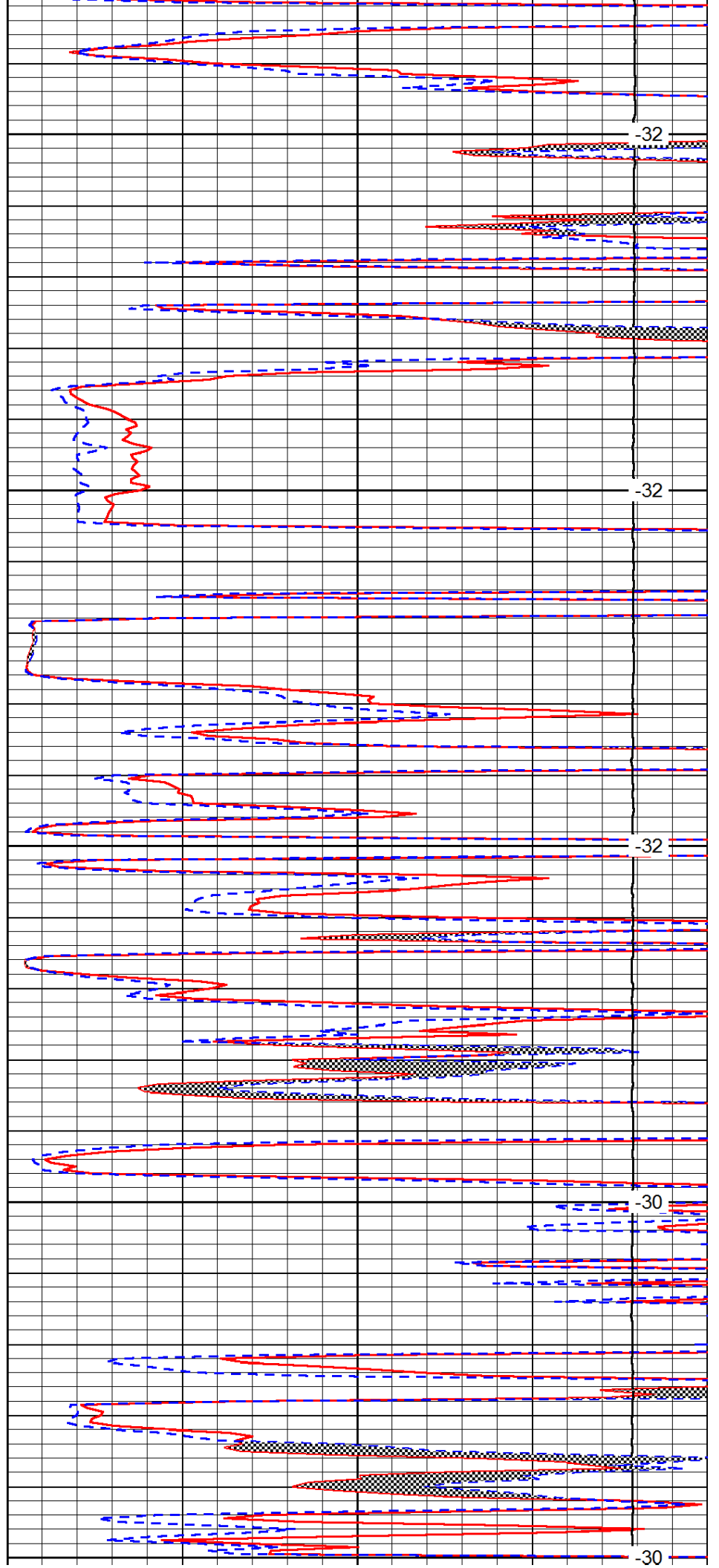
3950

4000

4050

4100

4150



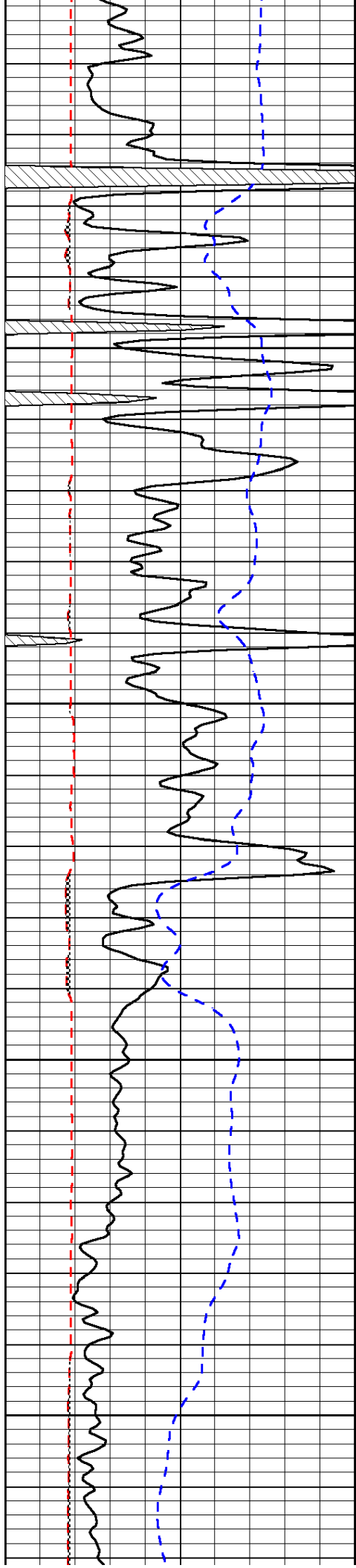
-32

-32

-32

-30

-30

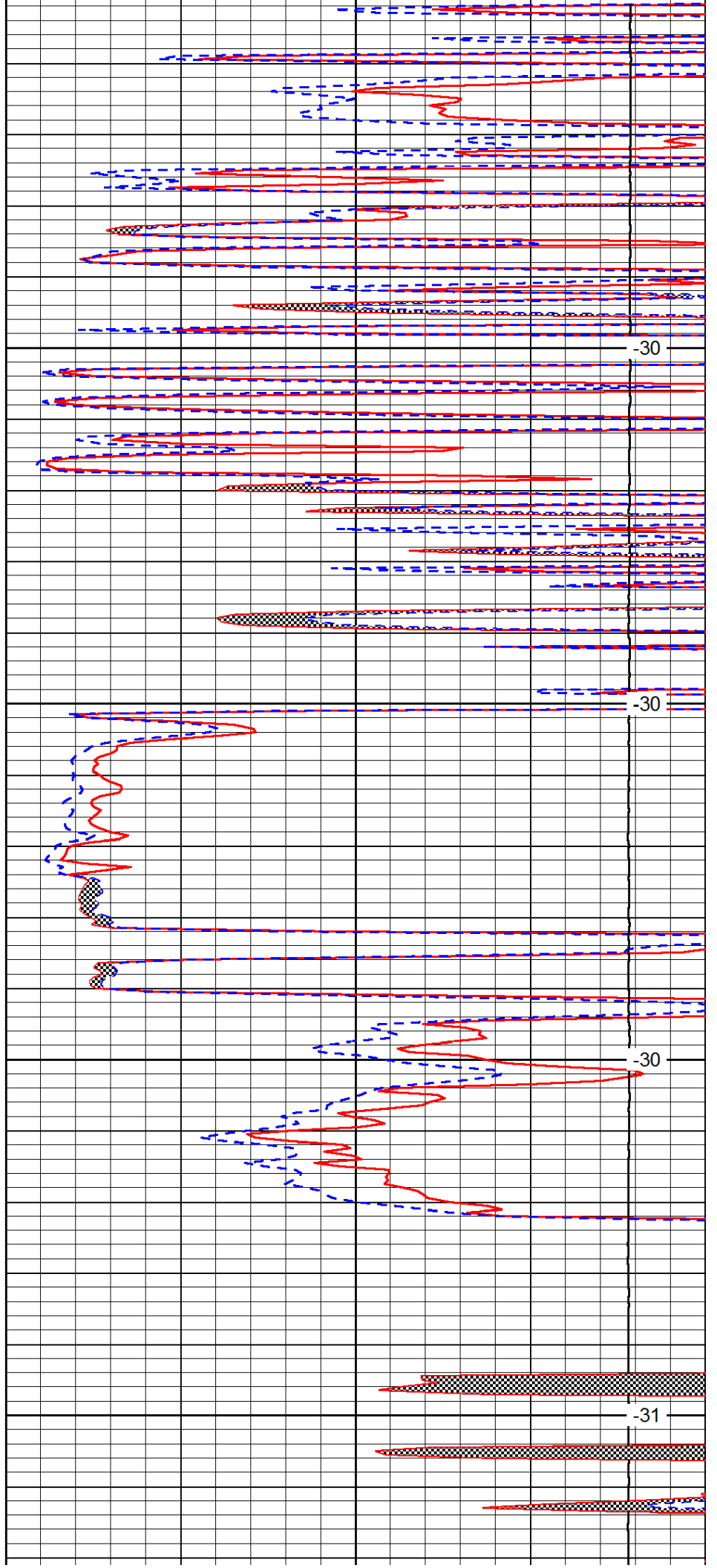


4200

4250

4300

4350

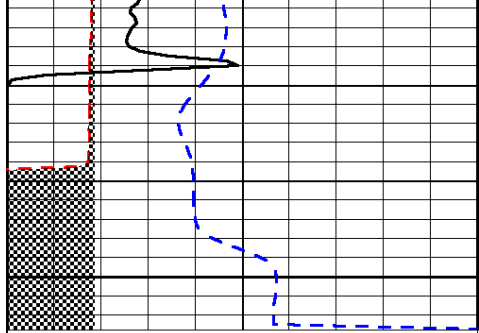


-30

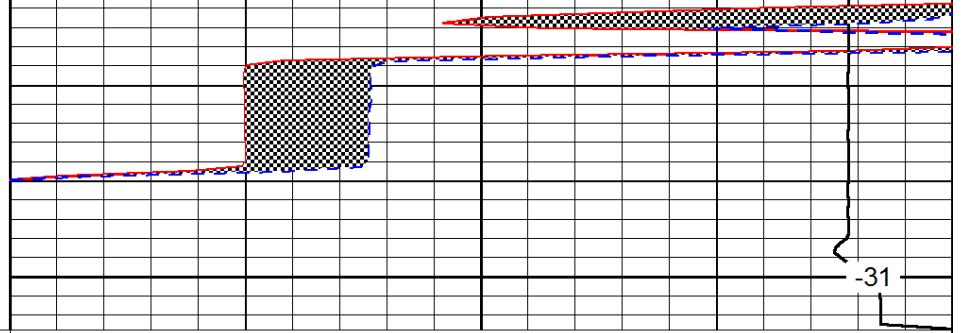
-30

-30

-31



4400



0	Gamma Ray	150
6	Micro Log Caliper (GAPI)	16
-200	SP (mV)	0

0	Micro Inverse 1 X 1	40
0	Micro Normal 2"	40
15000	Line Weight	0

LSPD