



Pioneer Energy Services

# Microresistivity Log

15-051-26,692-00-00

API No.

Company **TDI, Inc.**

Well **Conell #1**

Field

County **Ellis**

State

**Kansas**

Location

**1650' FNL & 1750' FEL**

Other Services  
CNL/CDL  
DIL

Sec: **26**

Twp: **11S**

Rge: **20W**

Elevation

K.B. 2096  
D.F.  
G.L. 2086

Permanent Datum  
Ground Level

Log Measured From  
Kelly Bushing

Drilling Measured From  
Kelly Bushing

10 Ft. Above Perm. Datum

Date

5/13/2014

Run Number

Two

Depth Driller

3800

Depth Logger

3798

Bottom Logged Interval

3797

Top Log Interval

2500

Casing Driller

8.625 @ 223

Casing Logger

223

Bit Size

7.875

Type Fluid in Hole

Chemical

Salinity,ppm CL

1,300

Density / Viscosity

9.0 61

pH / Fluid Loss

10.5 7.6

Source of Sample

Flowline

Rm @ Meas. Temp

1.1 @ 62

Rmf @ Meas. Temp

.83 @ 62

Rmc @ Meas. Temp

1.49 @ 62

Source of Rmf / Rmc

Charts

Rm @ BHT

.6 @ 114

Operating Rig Time

4 Hours

Max Rec. Temp. F

114

Equipment Number

17

Location

Hays

Recorded By

C. Desaire

Witnessed By

Tom Denning

<<< Fold Here >>>

All interpretations are opinions based on inferences from electrical or other measurements and we cannot and do not guarantee the accuracy or correctness of any interpretation, and we shall not, except in the case of gross or willful negligence on our part, be liable or responsible for any loss, costs, damages, or expenses incurred or sustained by anyone resulting from any interpretation made by any of our officers, agents or employees. These interpretations are also subject to our general terms and conditions set out in our current Price Schedule.

## Comments

Thank you for using Pioneer Energy Services  
www.pioneerres.com  
785 625 3858

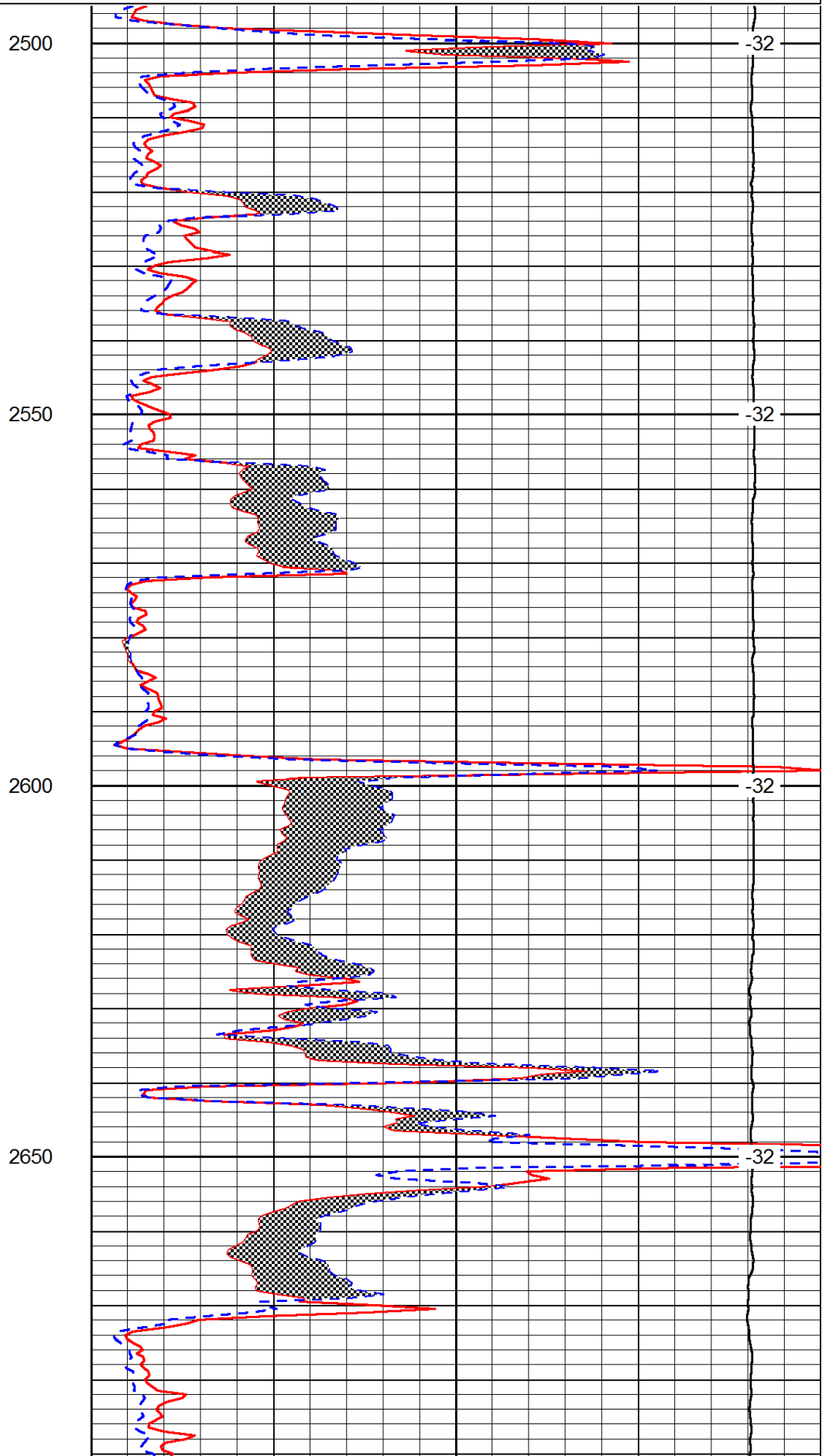
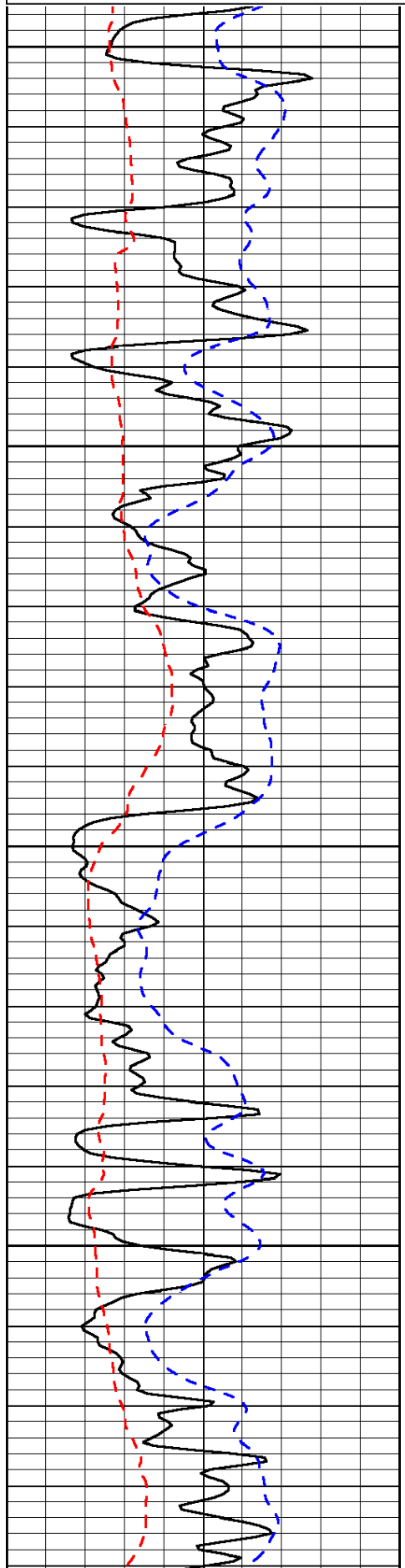
Ellis KS, N to Homestead Rd,  
2 E, 1 1/2 N, W Into

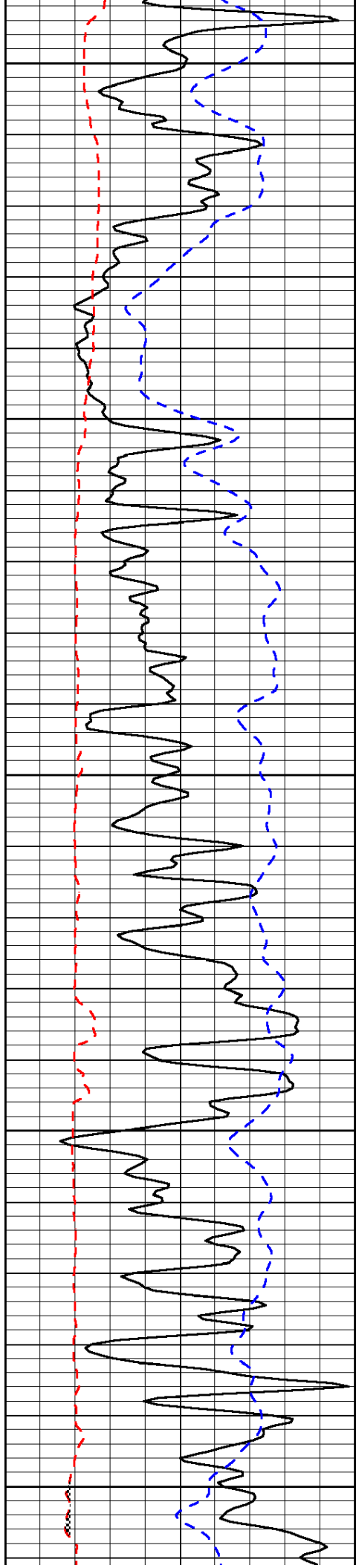
Database File: c:\warrior\data\tdi\_conell #1\tdihd.db  
Dataset Pathname: dil\tdistk  
Presentation Format: micro  
Dataset Creation: Tue May 13 18:52:36 2014  
Charted by: Depth in Feet scaled 1:240

0	Gamma Ray	150
6	Micro Log Caliper (GAPI)	16
-200	SP (mV)	0

0	Micro Inverse 1 X 1	40
0	Micro Normal 2"	40
15000	Line Weight	0

LSPD





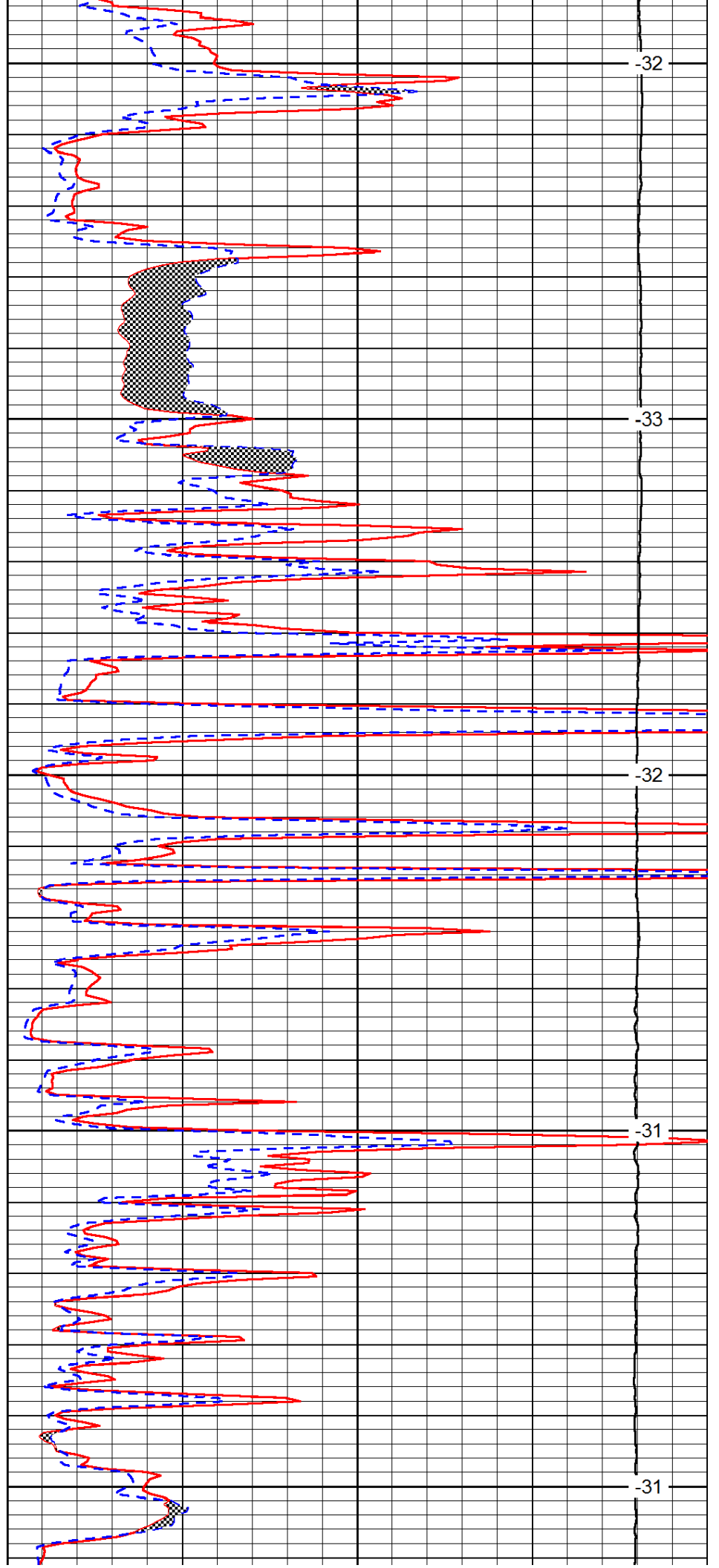
2700

2750

2800

2850

2900



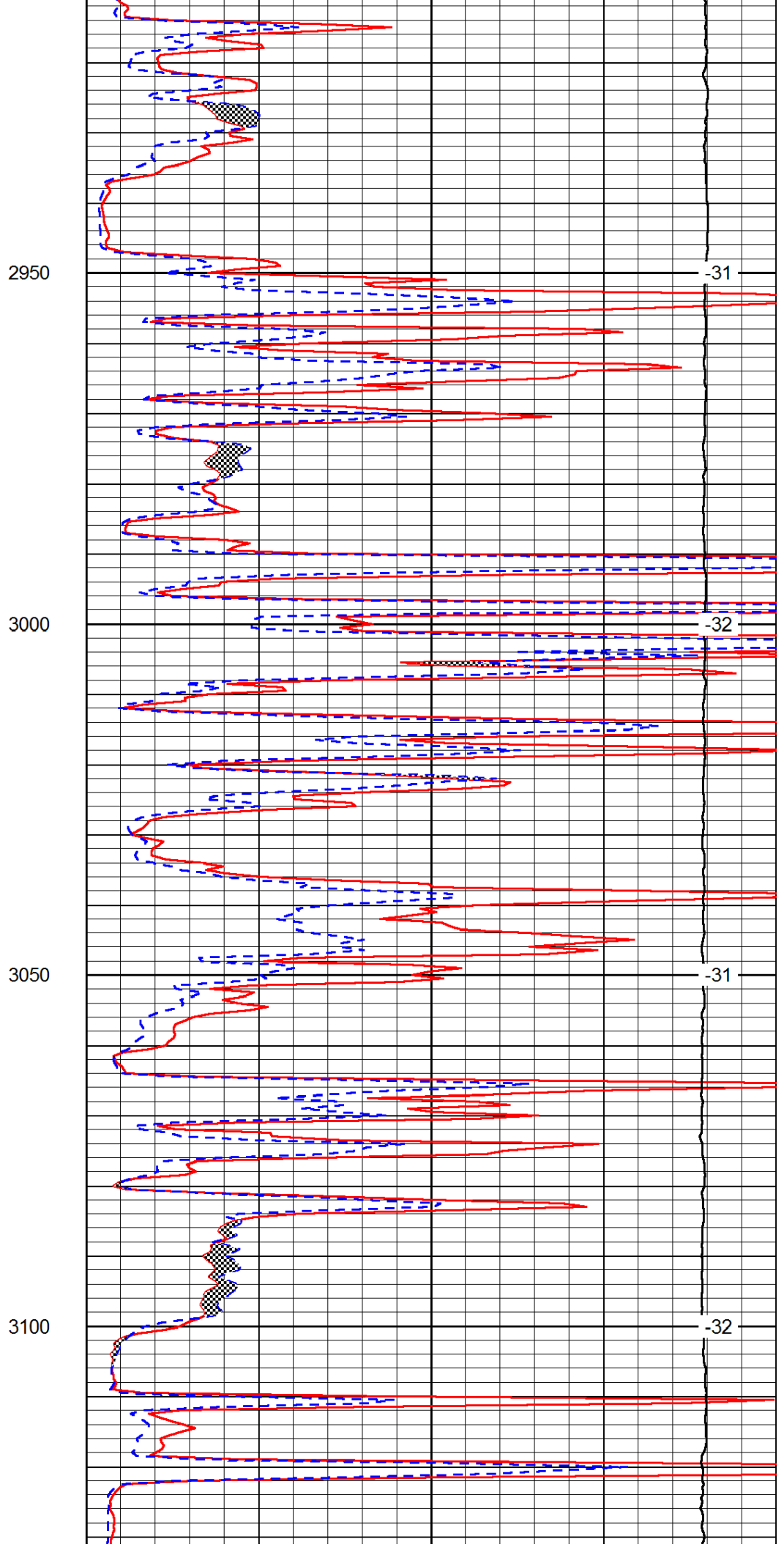
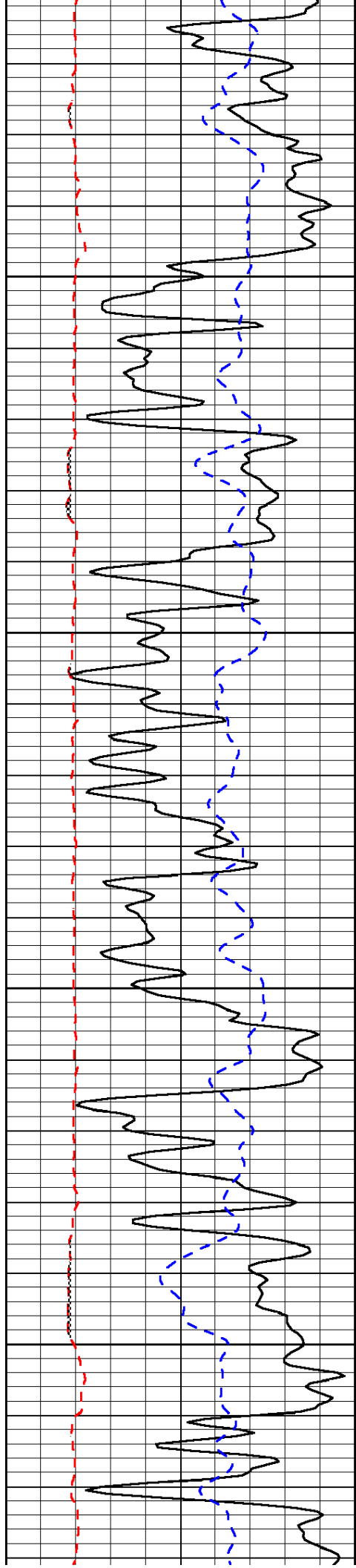
-32

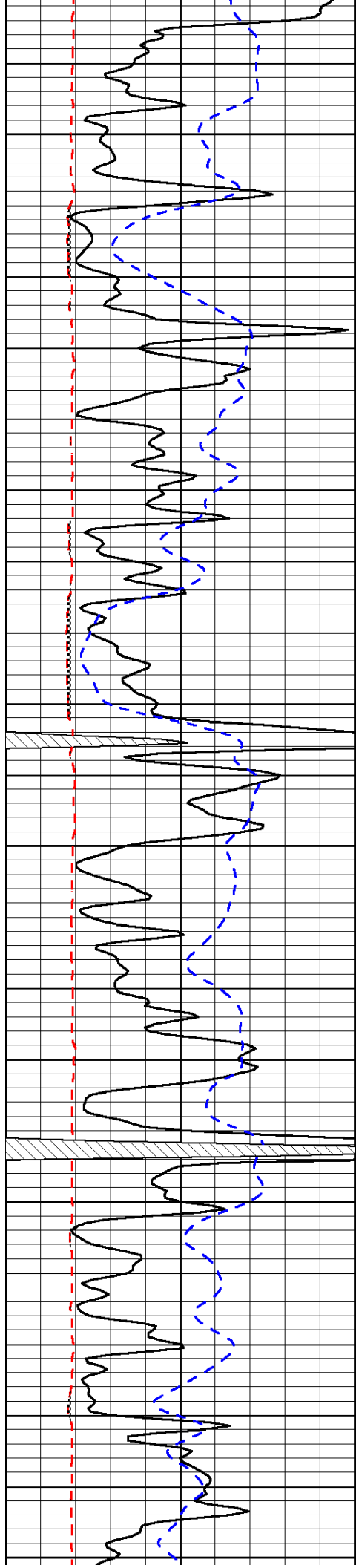
-33

-32

-31

-31





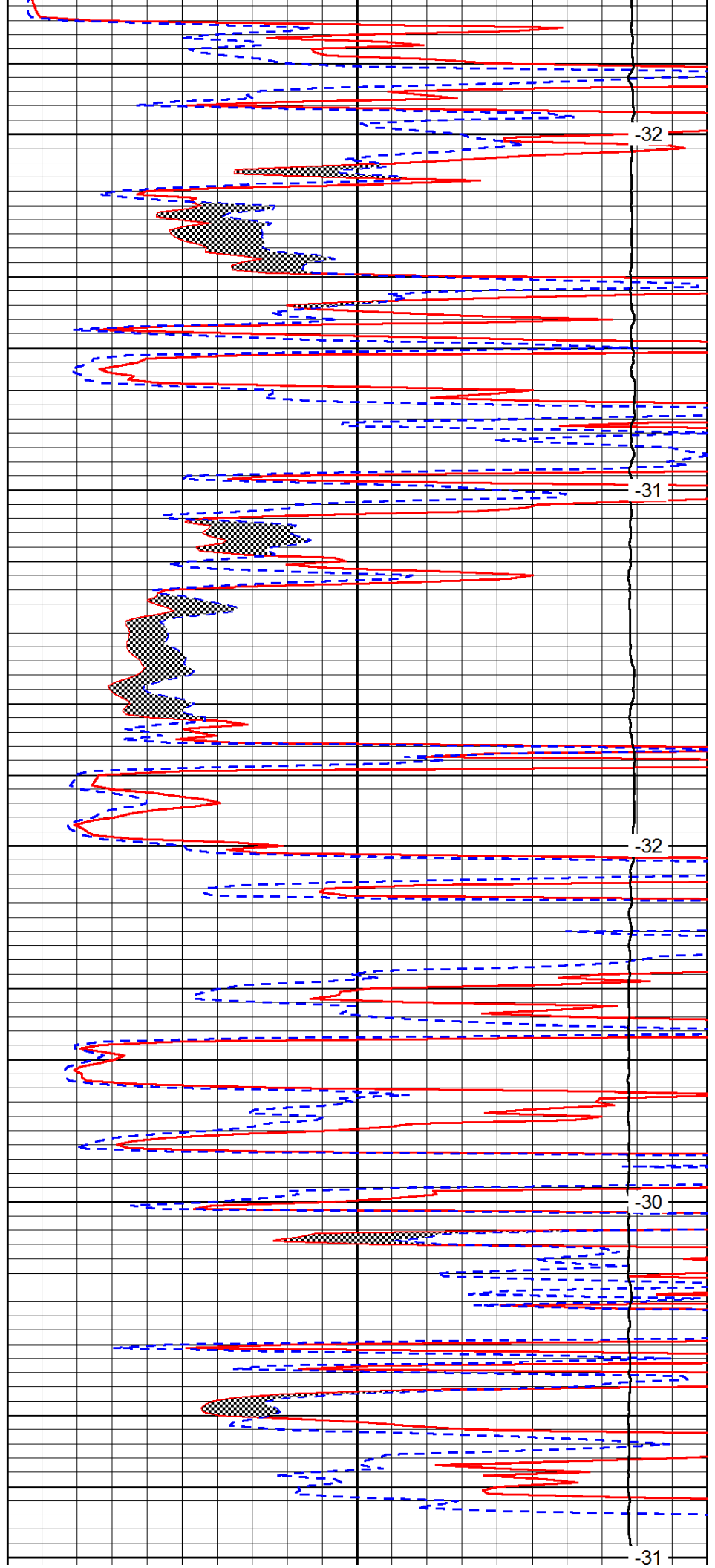
3150

3200

3250

3300

3350



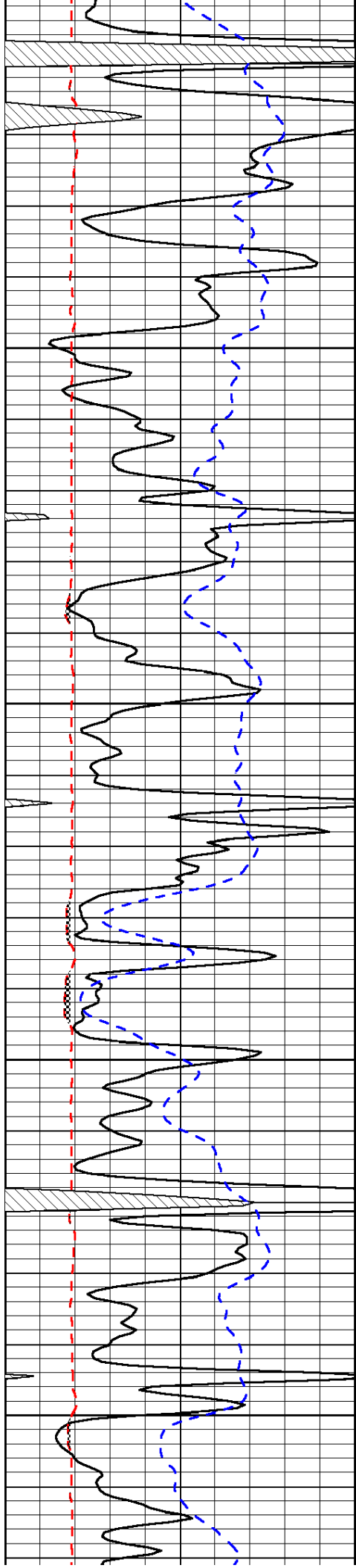
-32

-31

-32

-30

-31

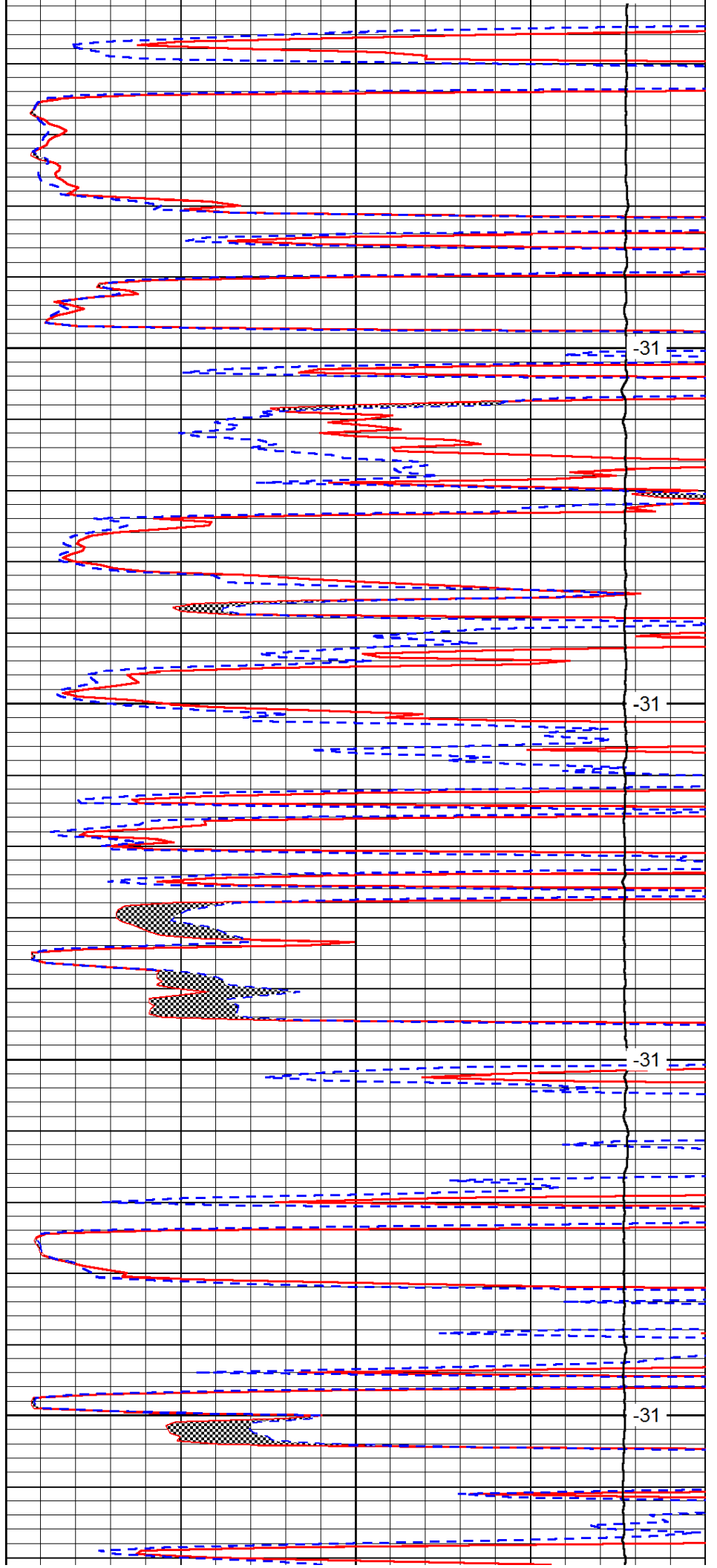


3400

3450

3500

3550

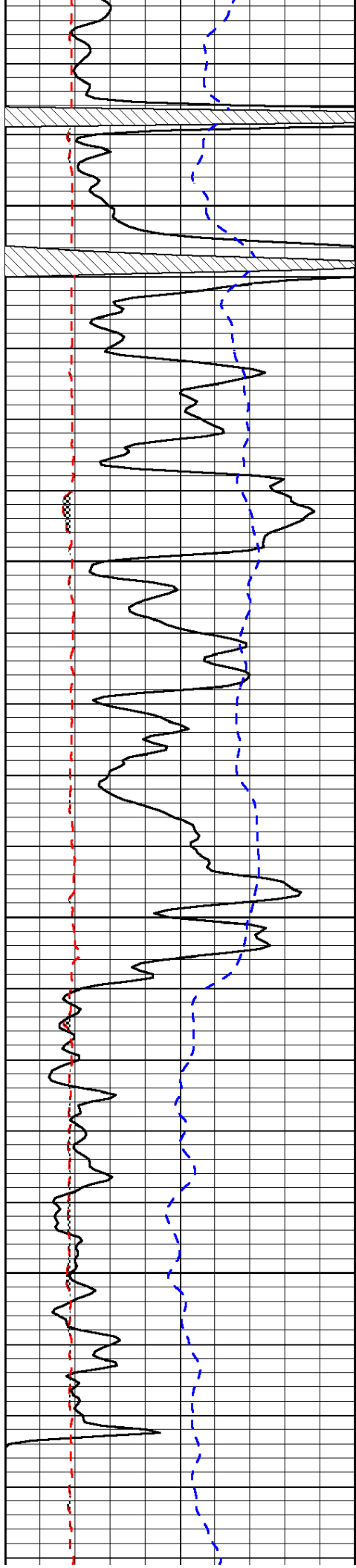


-31

-31

-31

-31

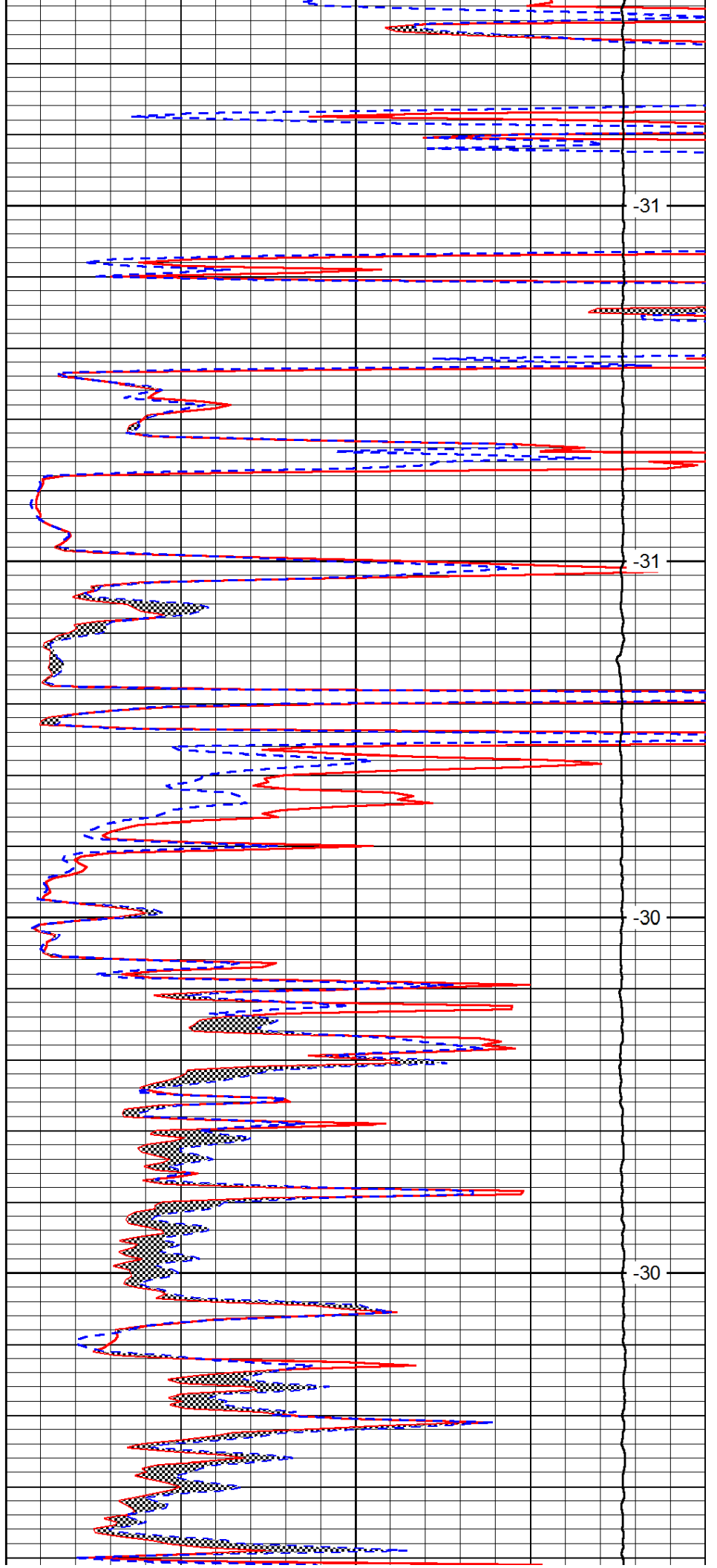


3600

3650

3700

3750

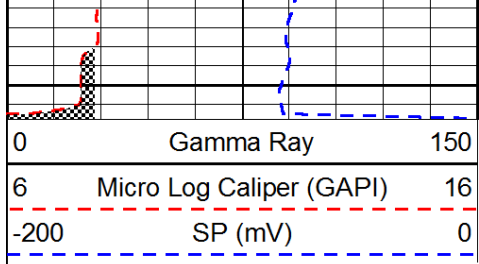


-31

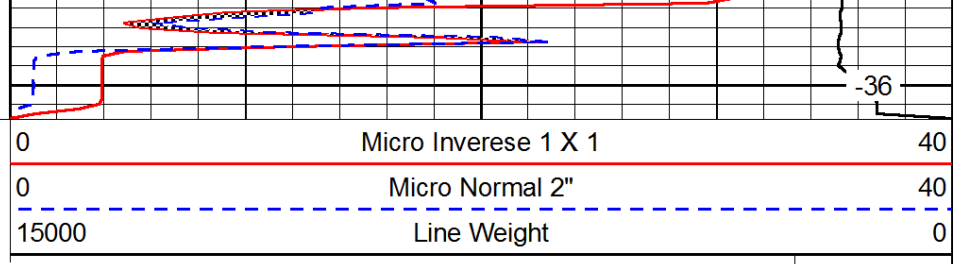
-31

-30

-30



3800



-36

LSPD