



Pioneer Energy Services

# Dual Induction Log

15-051-26,692-00-00

API No.

Company **TDI, Inc.**

Well **Conell #1**

Field

County **Ellis**

State

**Kansas**

Location

**1650' FNL & 1750' FEL**

Other Services  
CNL/CDL  
MEL

Sec: **26**

Twp: **11S**

Rge: **20W**

Elevation

**2086**

Permanent Datum **Ground Level** Elevation **2086**  
 Log Measured From **Kelly Bushing** **10 Ft. Above Perm. Datum**  
 Drilling Measured From **Kelly Bushing**

K.B. **2096**  
 D.F. **2086**  
 G.L. **2086**

Date	5/13/2014	
Run Number	One	
Depth Driller	3800	
Depth Logger	3798	
Bottom Logged Interval	3797	
Top Log Interval	200	
Casing Driller	8.625 @ 223	
Casing Logger	223	
Bit Size	7.875	
Type Fluid in Hole	Chemical	
Salinity,ppm CL	1,300	
Density / Viscosity	9.0   61	
pH / Fluid Loss	10.5   7.6	
Source of Sample	Flowline	
Rm @ Meas. Temp	1.1 @ 62	
Rmf @ Meas. Temp	.83 @ 62	
Rmc @ Meas. Temp	1.49 @ 62	
Source of Rmf / Rmc	Charts	
Rm @ BHT	.6 @ 114	
Operating Rig Time	4 Hours	
Max Rec. Temp. F	114	
Equipment Number	17	
Location	Hays	
Recorded By	C. Desai	
Witnessed By	Tom Denning	

<<< Fold Here >>>

All interpretations are opinions based on inferences from electrical or other measurements and we cannot and do not guarantee the accuracy or correctness of any interpretation, and we shall not, except in the case of gross or willful negligence on our part, be liable or responsible for any loss, costs, damages, or expenses incurred or sustained by anyone resulting from any interpretation made by any of our officers, agents or employees. These interpretations are also subject to our general terms and conditions set out in our current Price Schedule.

### Comments

Thank you for using Pioneer Energy Services  
[www.pioneerenergy.com](http://www.pioneerenergy.com)  
 785 625 3858

Ellis KS, N to Homestead Rd,  
 2 E, 1 1/2 N, W Into

Database File: c:\warrior\data\tdi\_conell #1\tdihd.db  
 Dataset Pathname: dil\tdistk  
 Presentation Format: dil2in  
 Dataset Creation: Tue May 13 18:52:36 2014  
 Charted by: Depth in Feet scaled 1:600

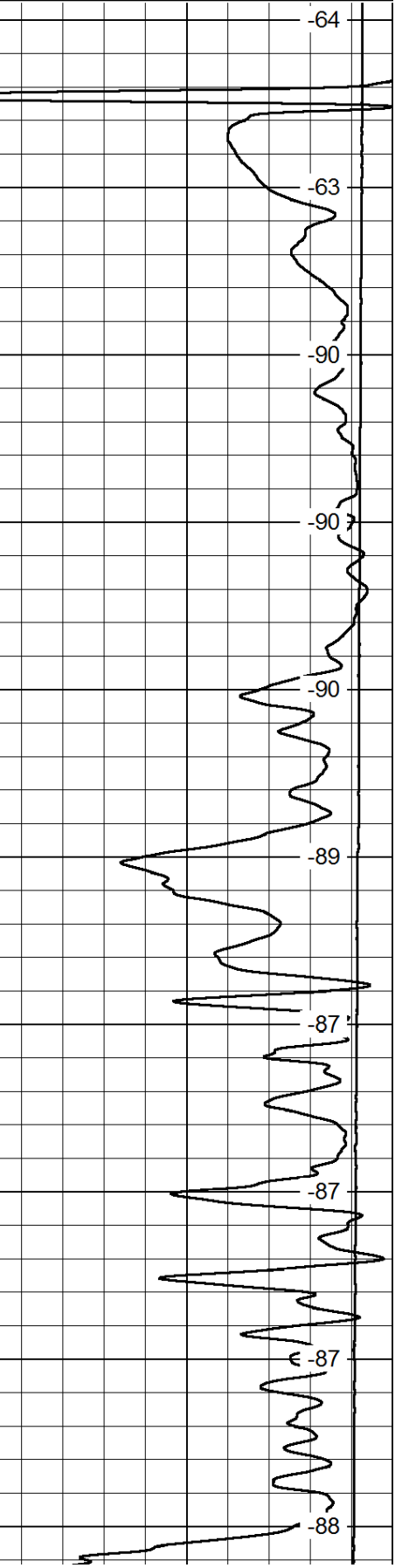
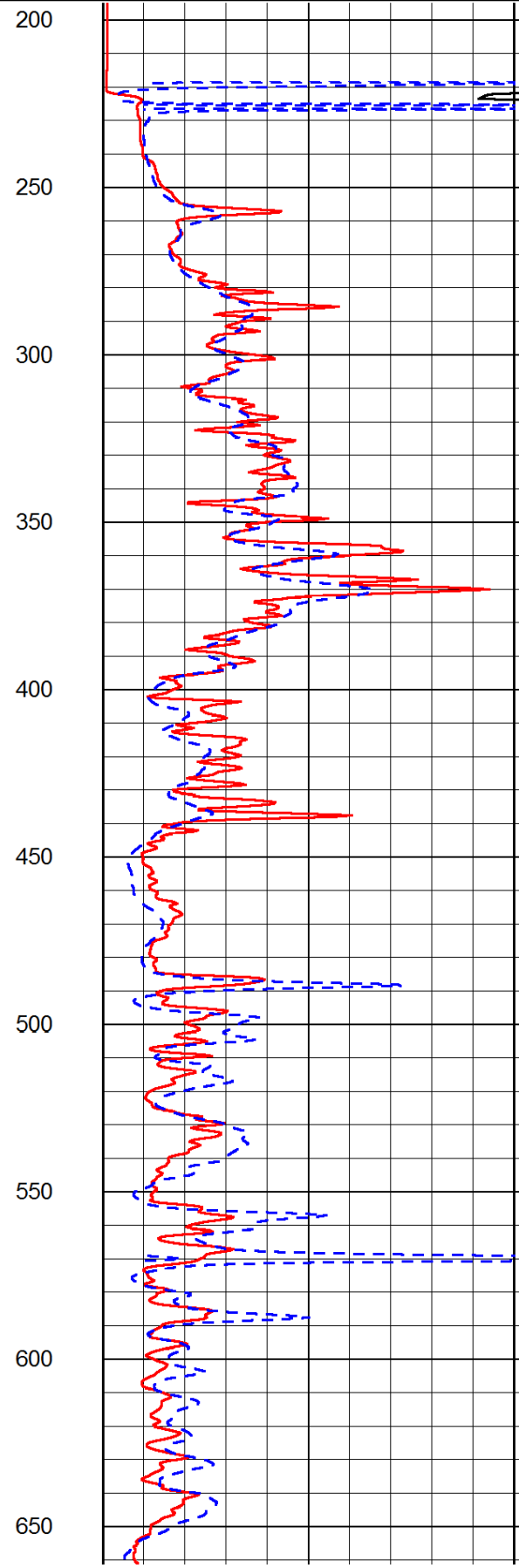
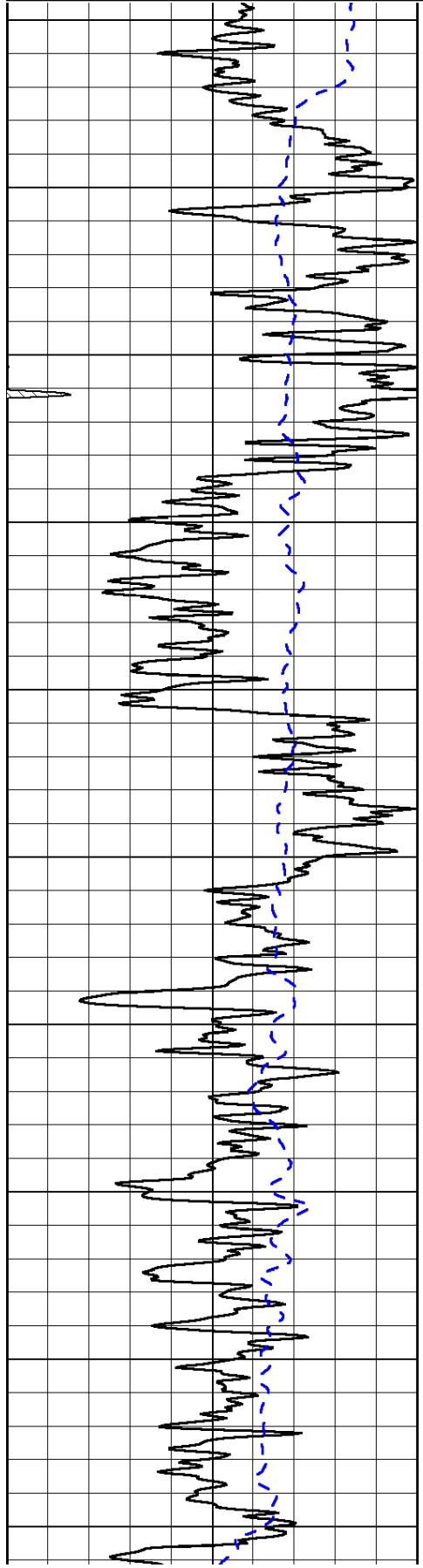
0	Gamma Ray	150
-200	SP (mV)	0

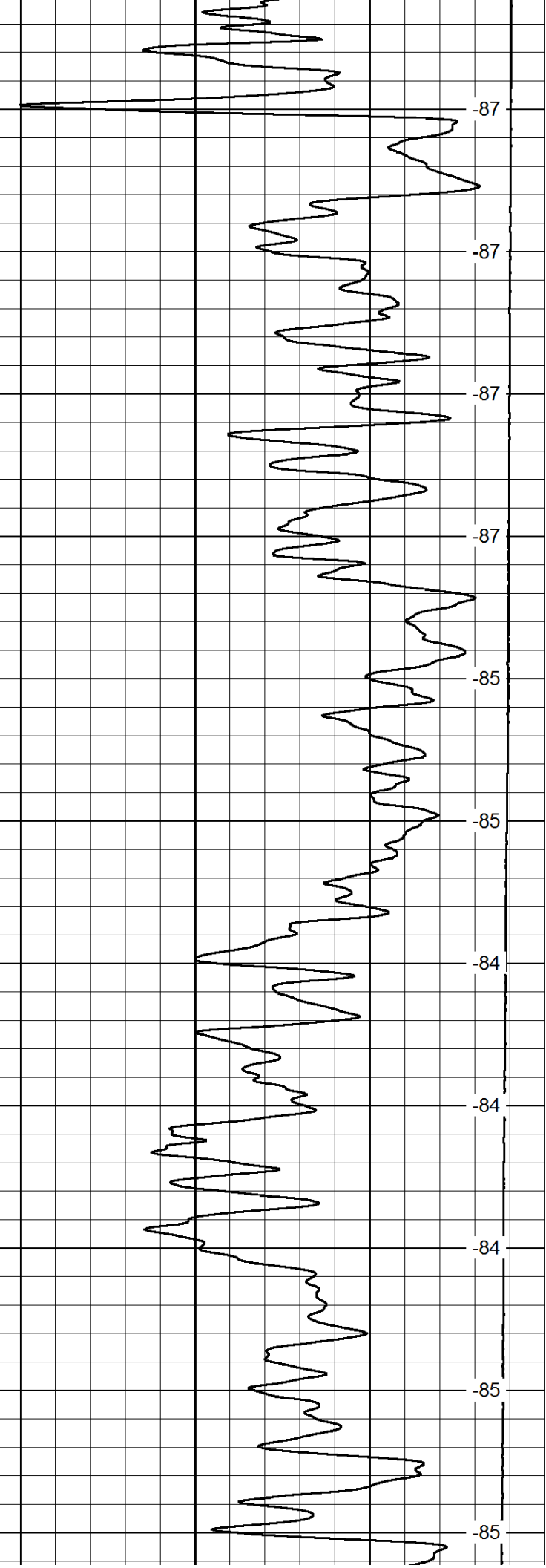
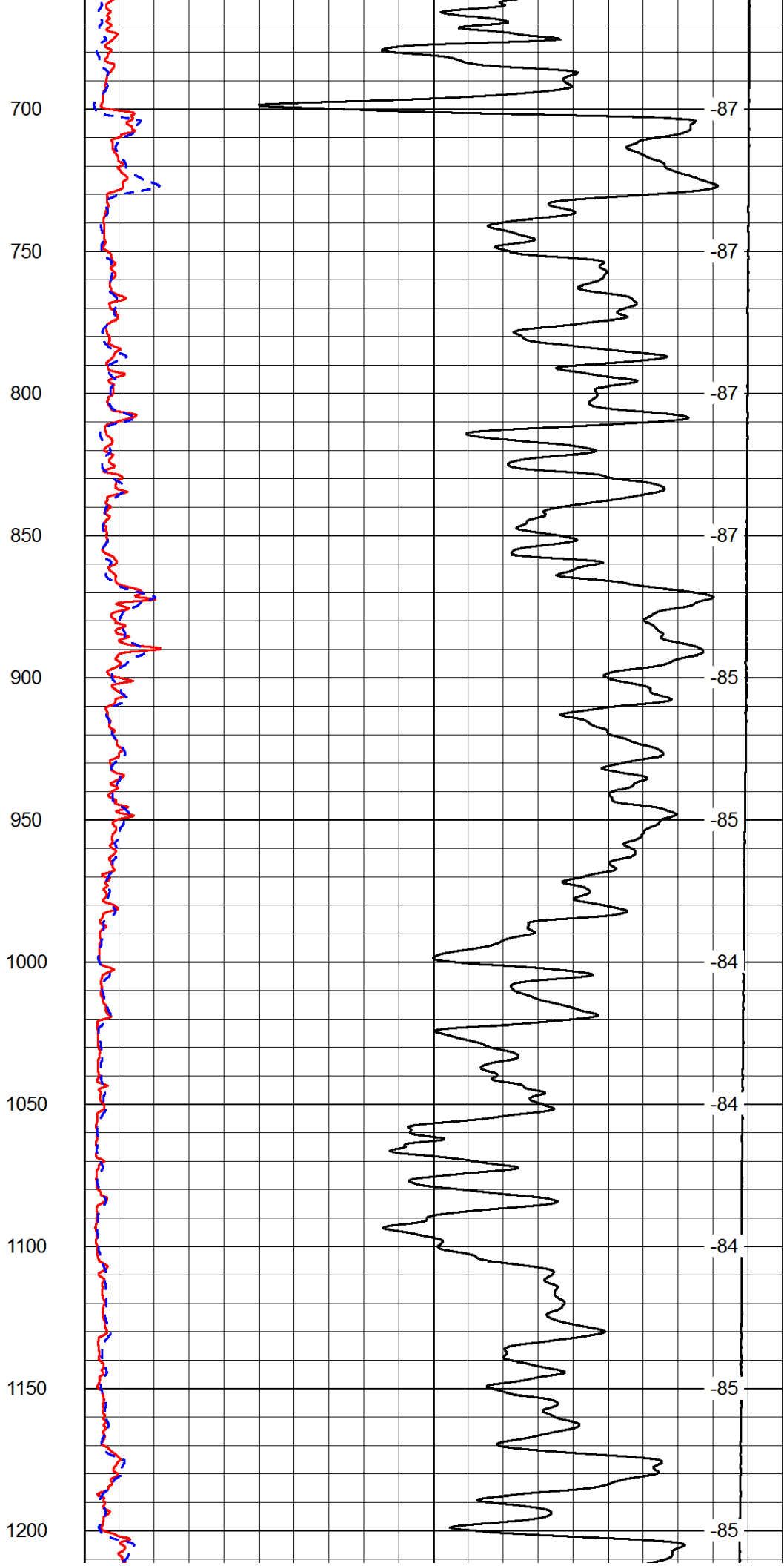
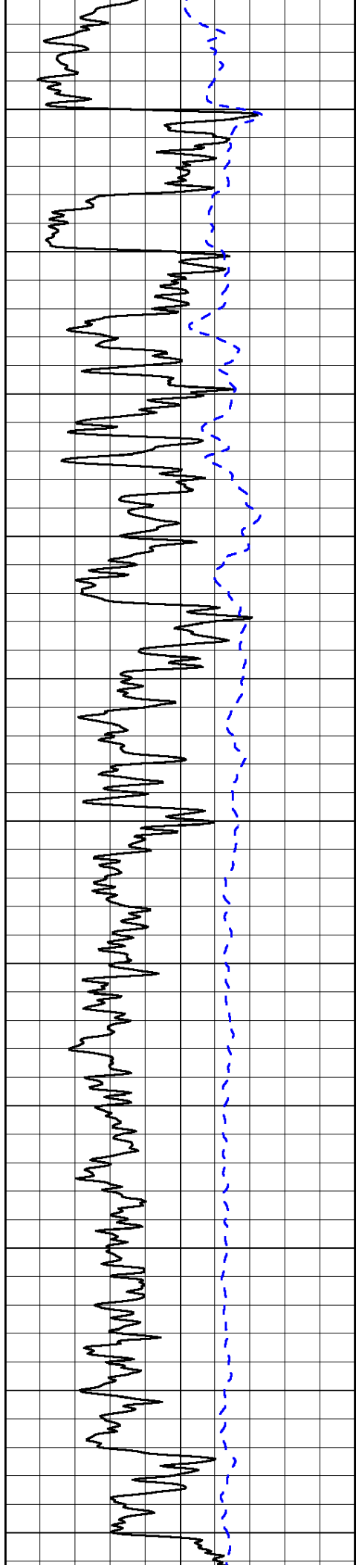
0	Shallow Resistivity	50
0	Deep Resistivity	50

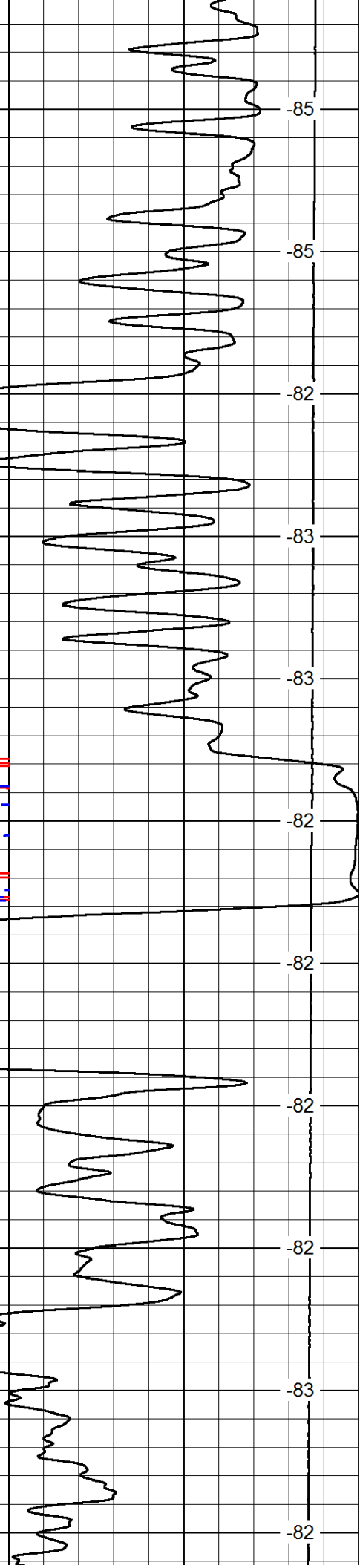
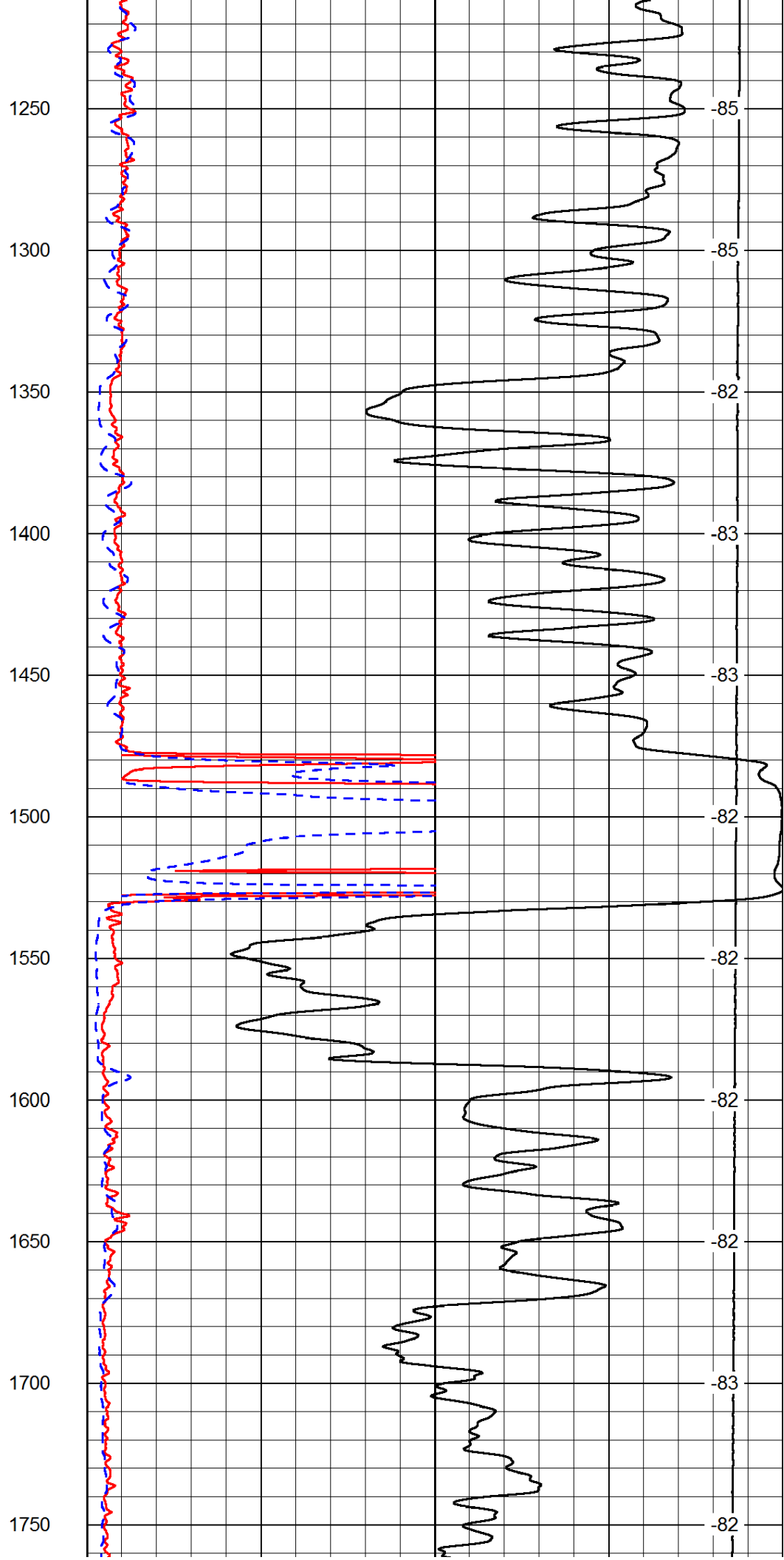
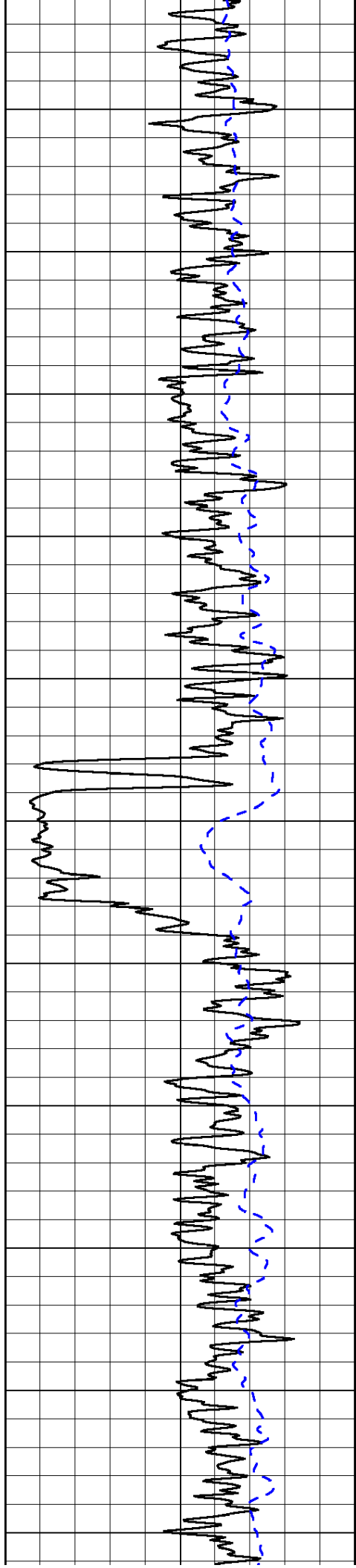
LSPD

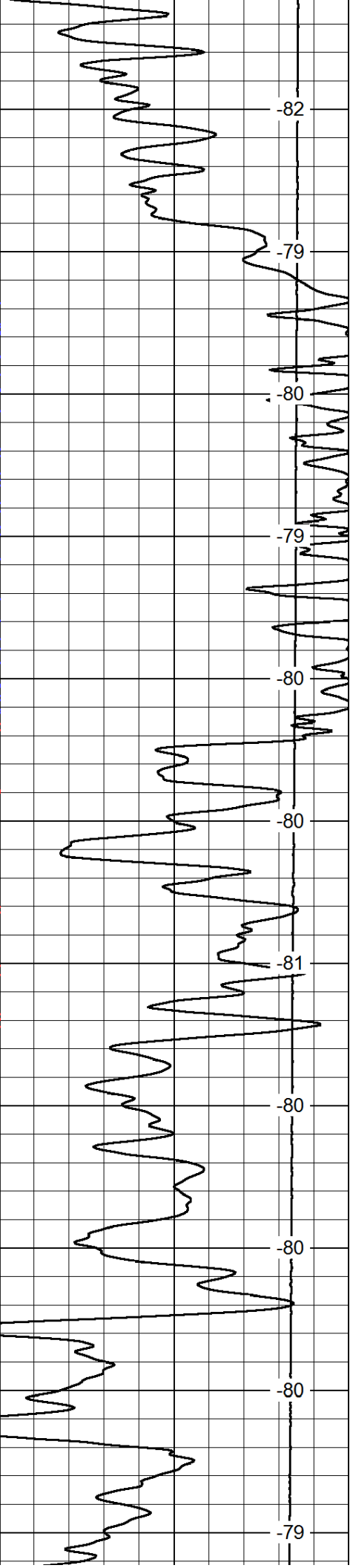
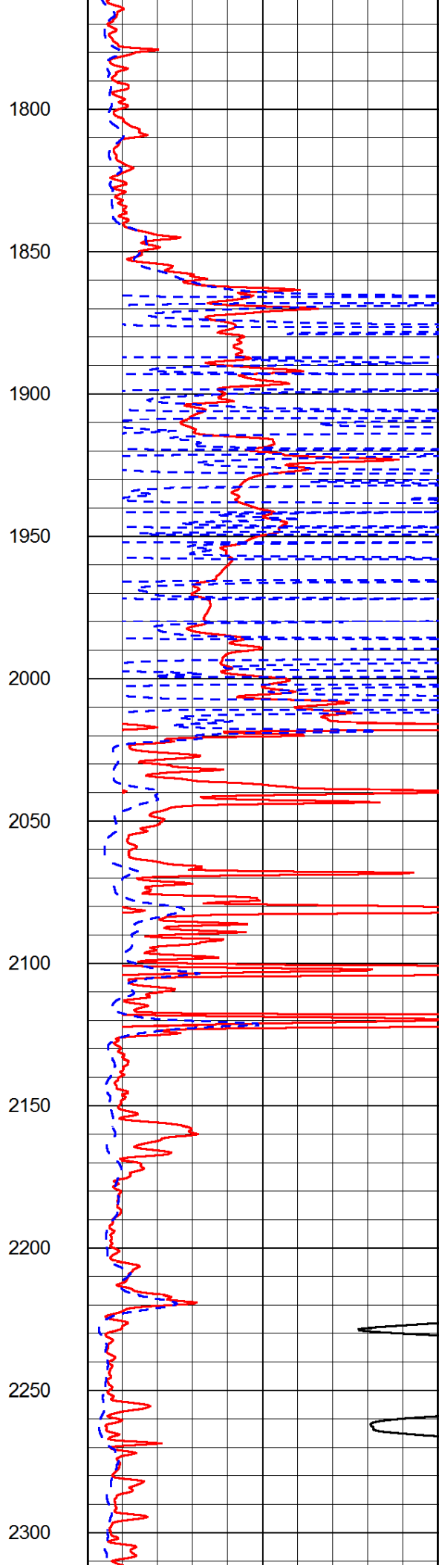
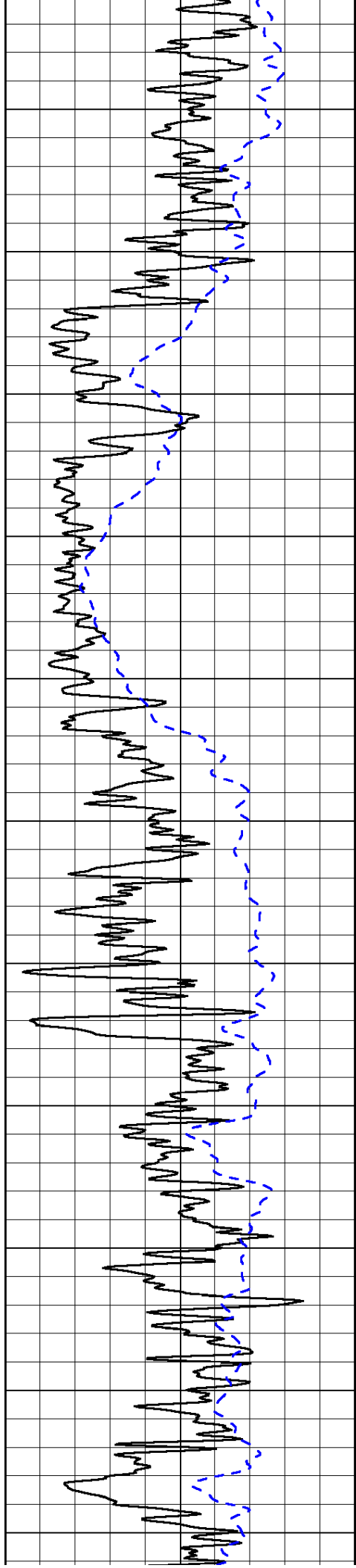
1000	Conductivity	0
15000	Line Tension	0

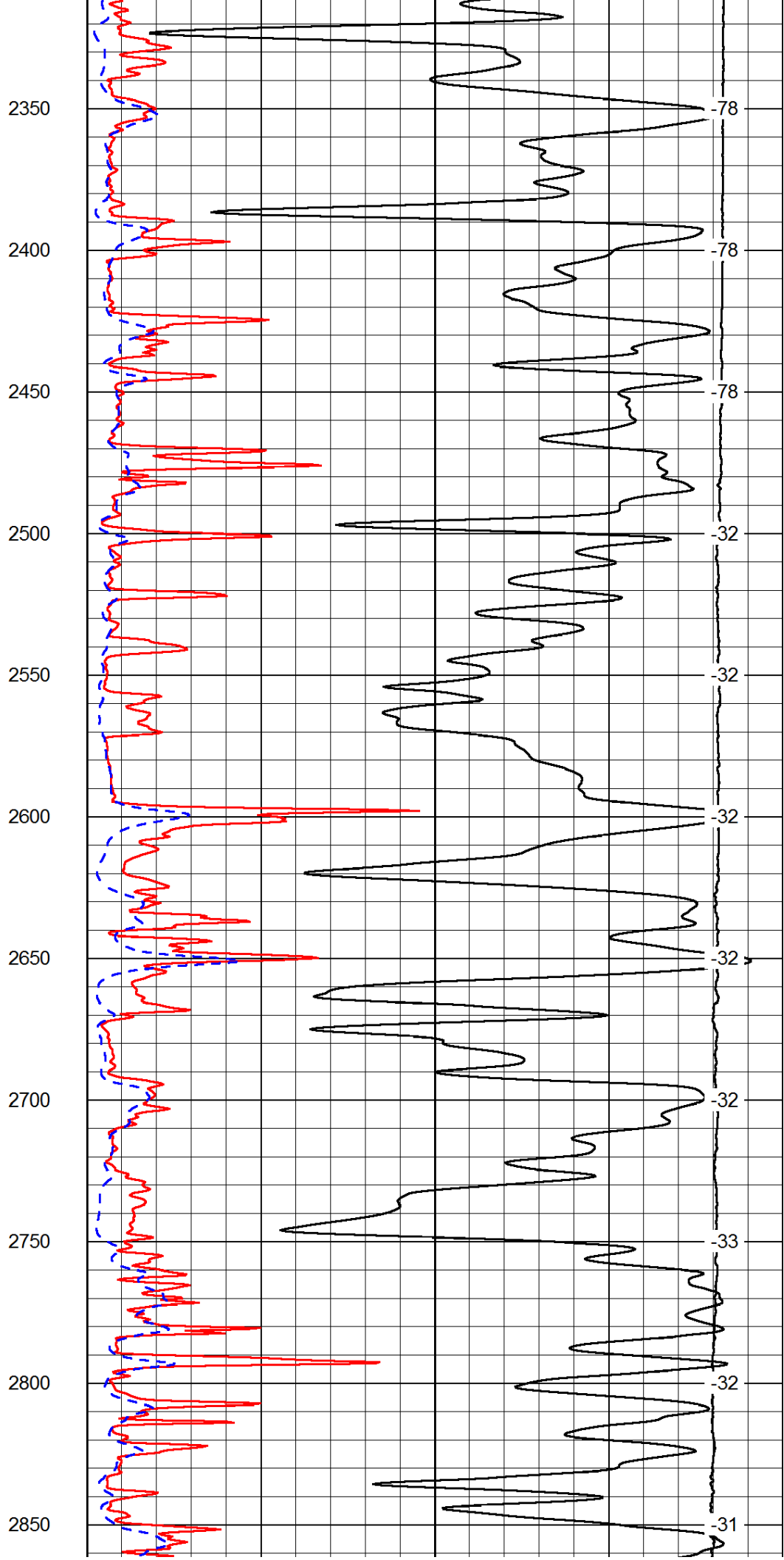
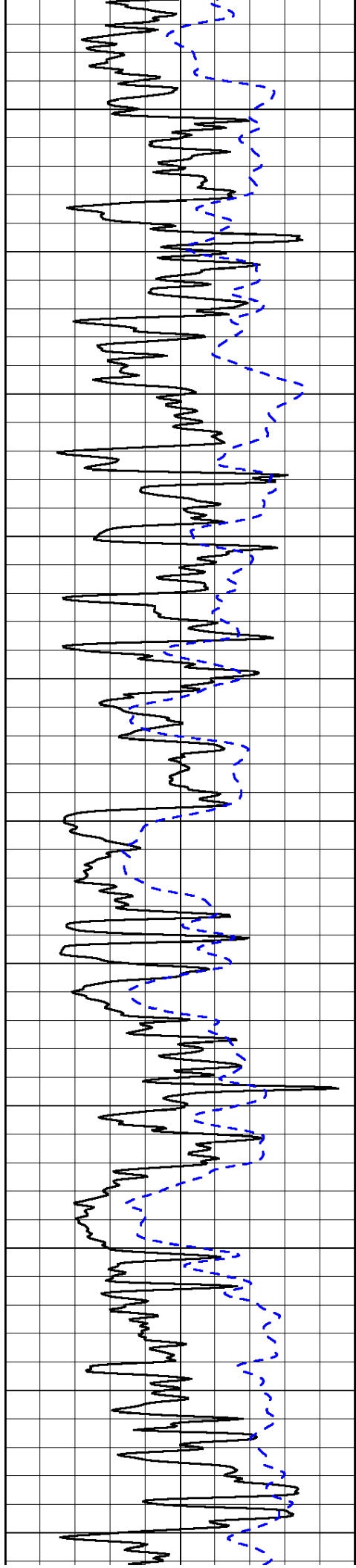
50	Shallow Resistivity	500
50	Deep Resistivity	500

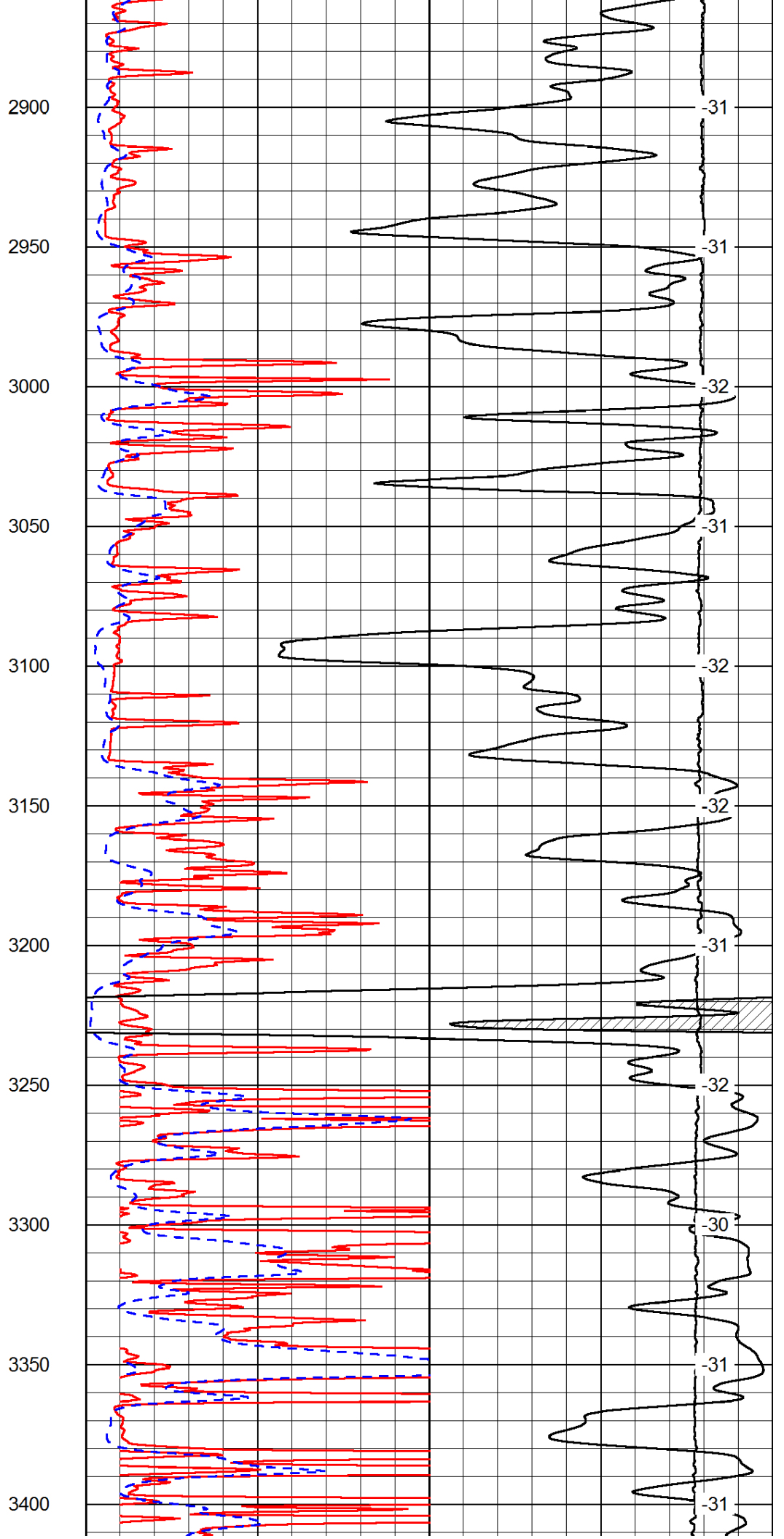
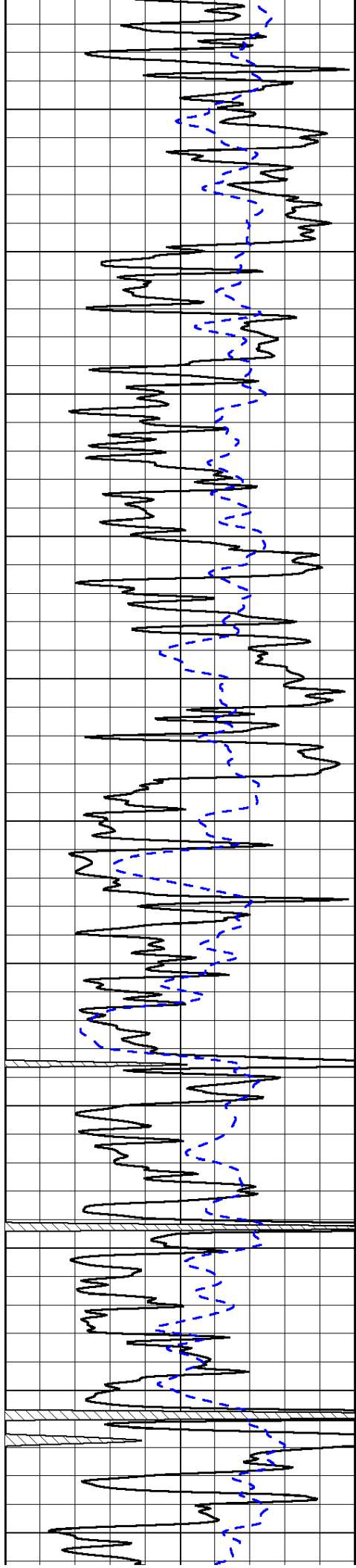


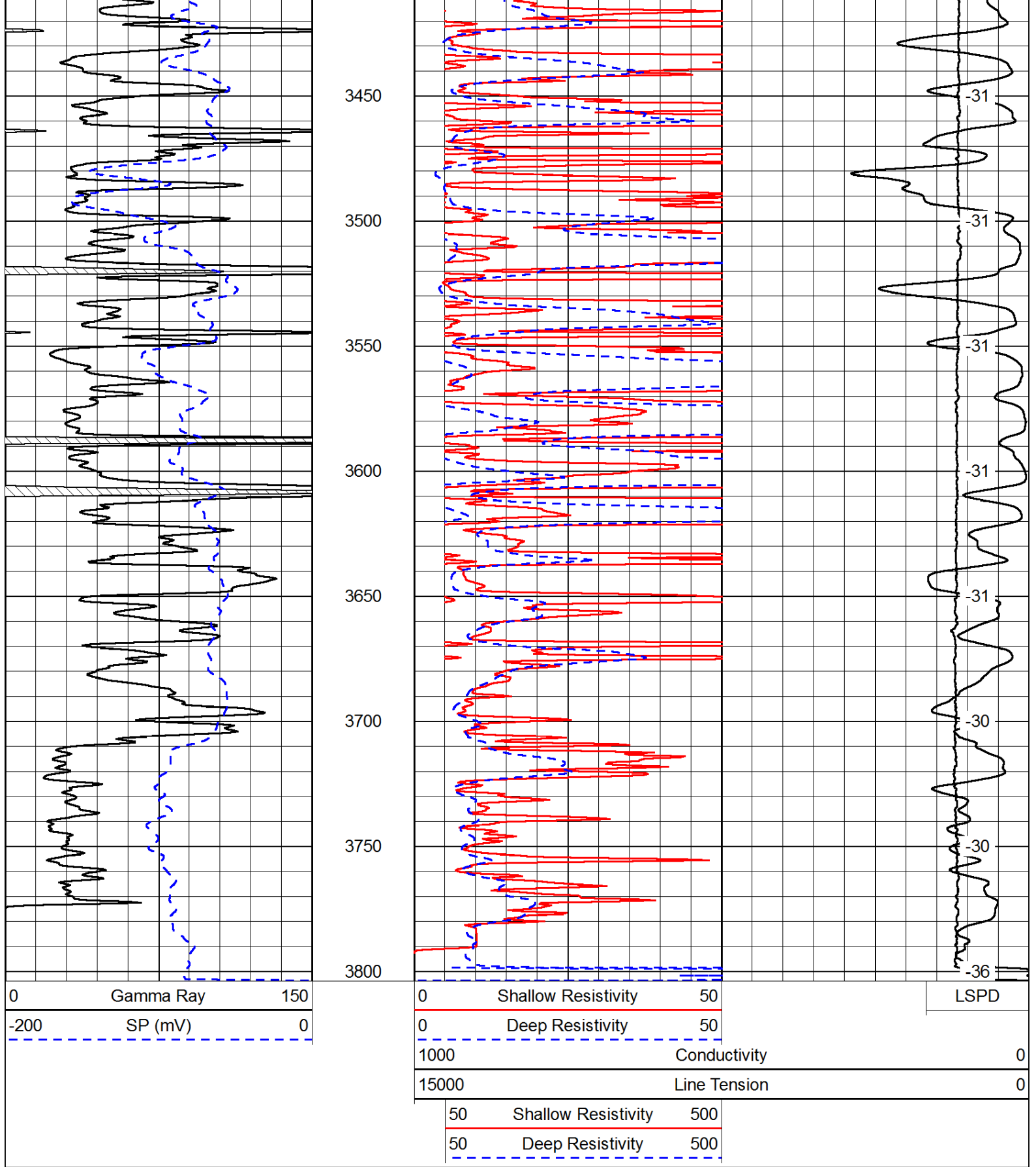




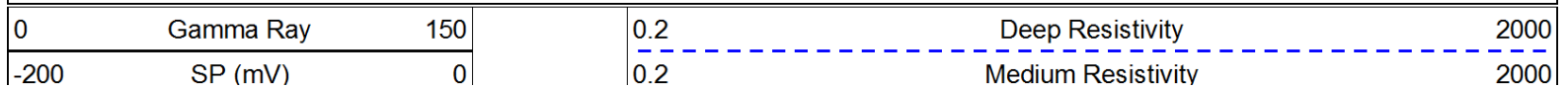








Database File: c:\warrior\data\tdi\_conell #1\tdihd.db  
 Dataset Pathname: dil/tdistk  
 Presentation Format: dil  
 Dataset Creation: Tue May 13 18:52:36 2014  
 Charted by: Depth in Feet scaled 1:240

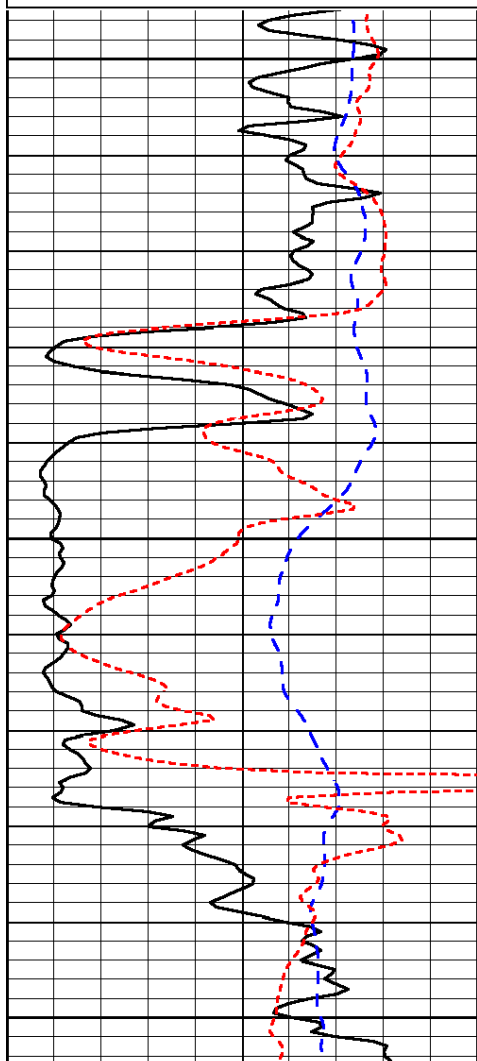


-160 RxoRt 40

0.2 Shallow Resistivity 2000

15000 Line Tension 0

LSPD



1450

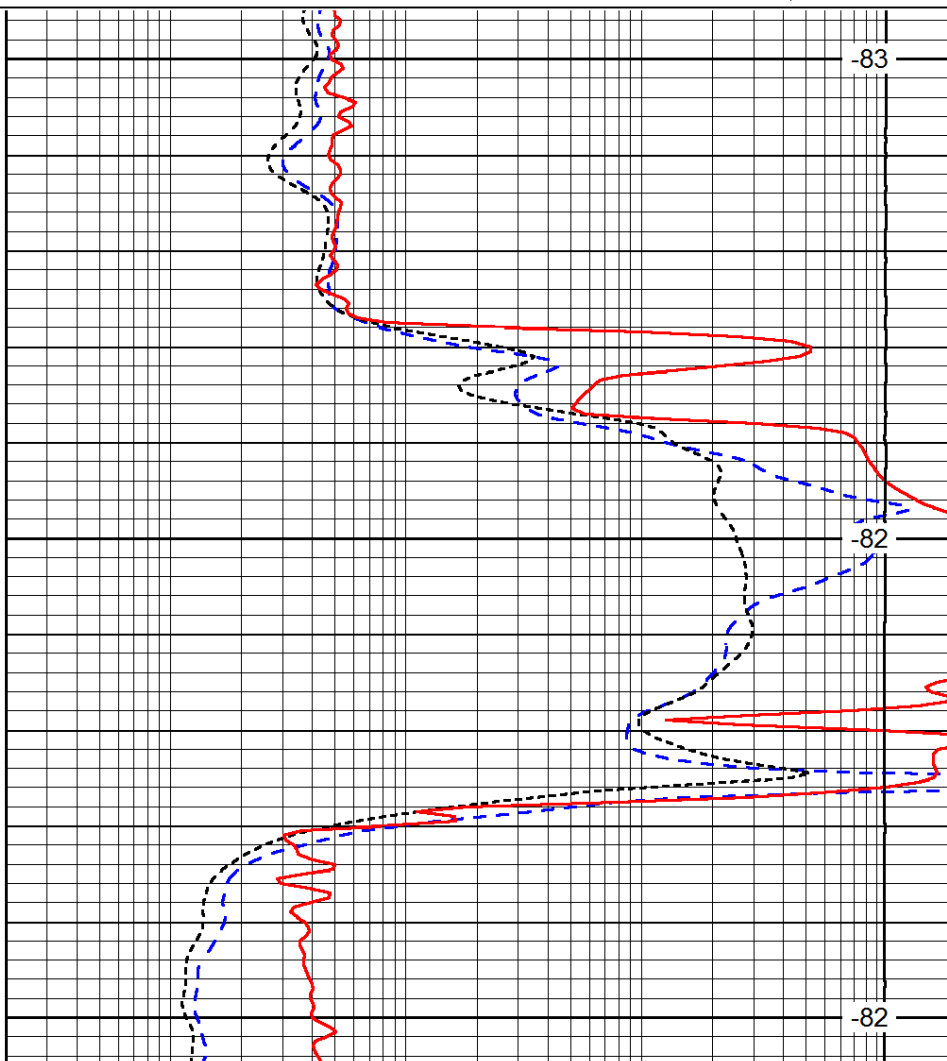
1500

1550

0 Gamma Ray 150

-200 SP (mV) 0

-160 RxoRt 40



-83

-82

-82

0.2 Deep Resistivity 2000

0.2 Medium Resistivity 2000

0.2 Shallow Resistivity 2000

15000 Line Tension 0

LSPD

Database File: c:\warrior\data\tdi\_conell #1\tdihd.db  
 Dataset Pathname: dil/tdistk  
 Presentation Format: dil  
 Dataset Creation: Tue May 13 18:52:36 2014  
 Charted by: Depth in Feet scaled 1:240

0 Gamma Ray 150

-200 SP (mV) 0

-160 RxoRt 40

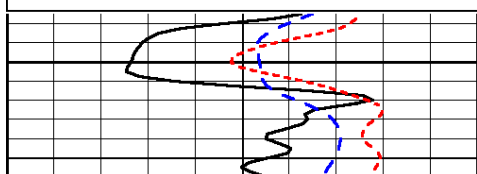
0.2 Deep Resistivity 2000

0.2 Medium Resistivity 2000

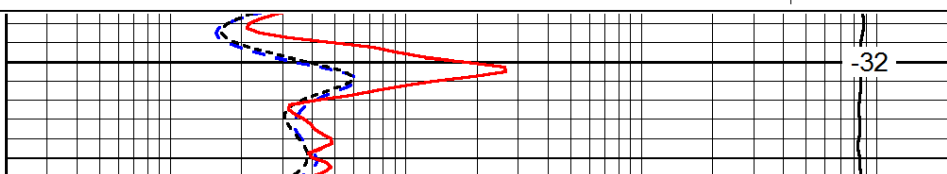
0.2 Shallow Resistivity 2000

15000 Line Tension 0

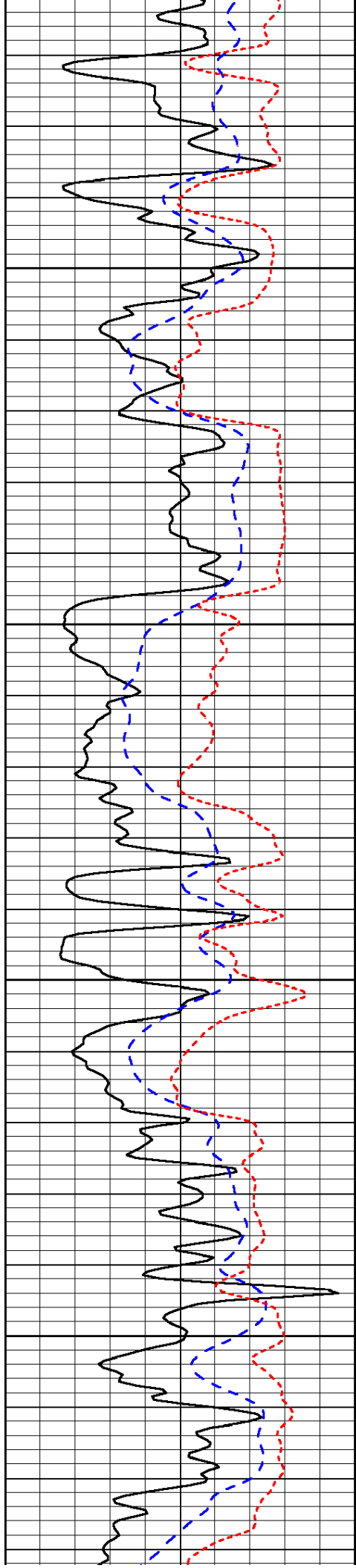
LSPD



2500



-32

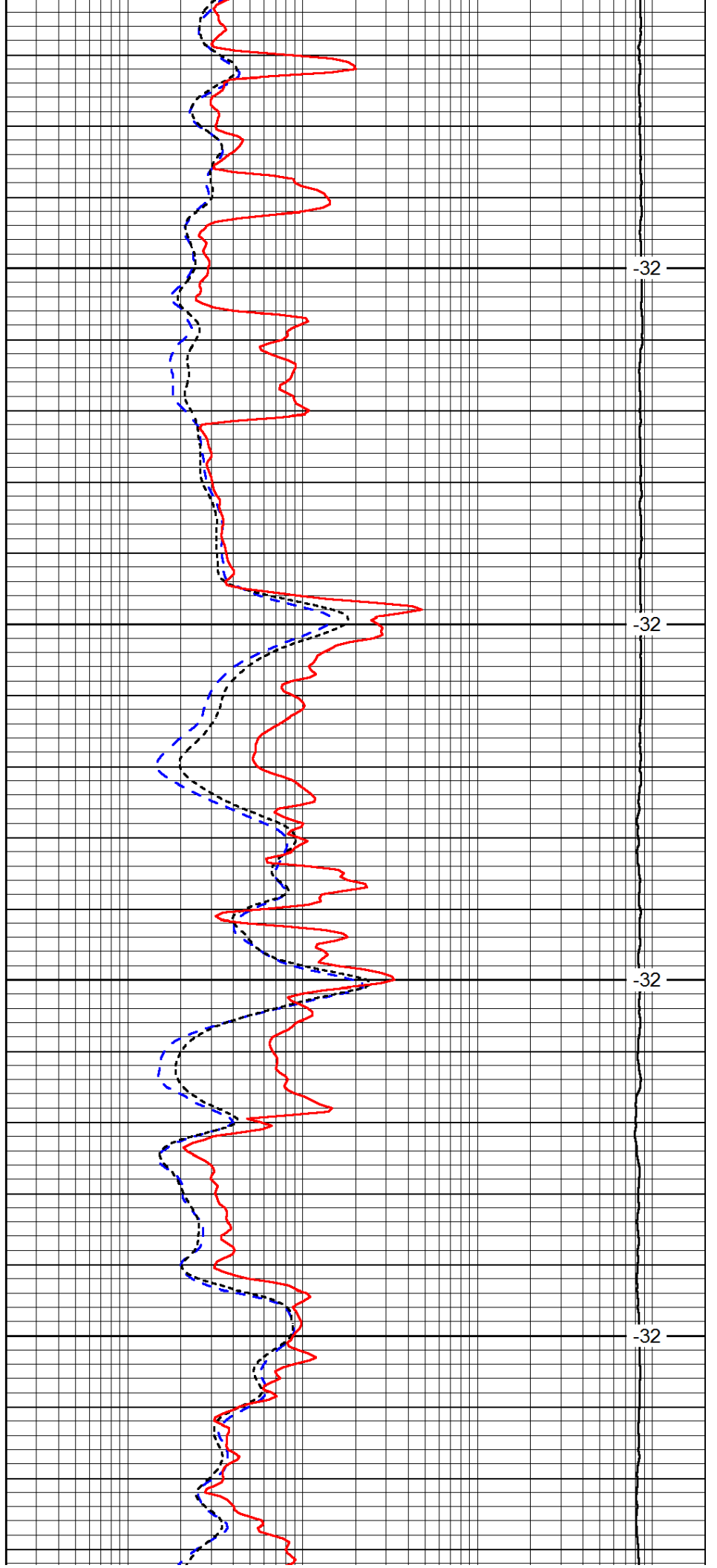


2550

2600

2650

2700

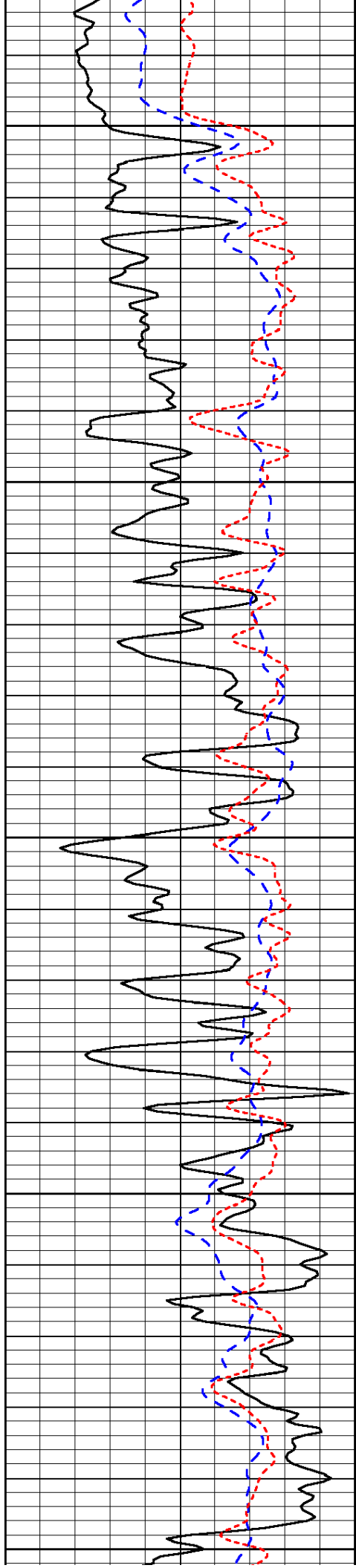


-32

-32

-32

-32



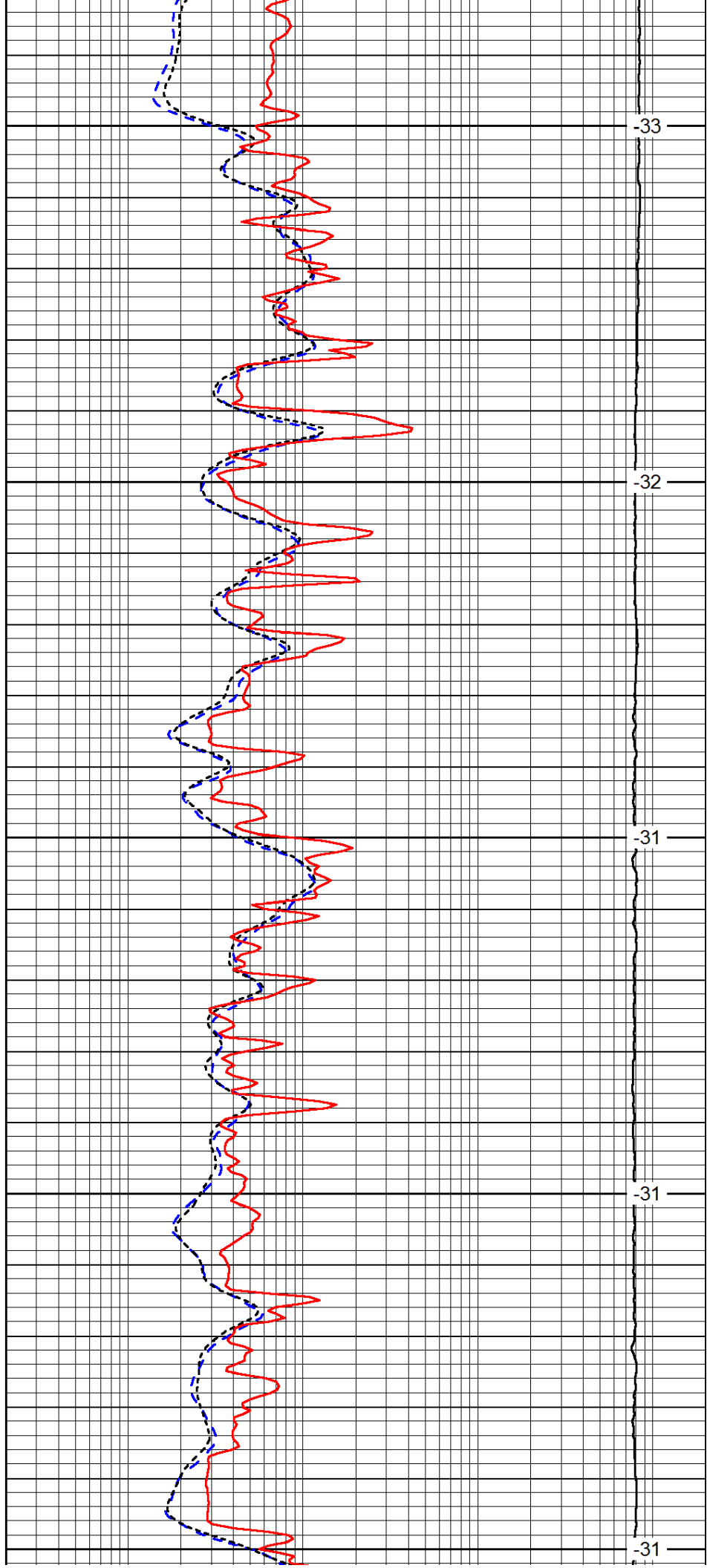
2750

2800

2850

2900

2950



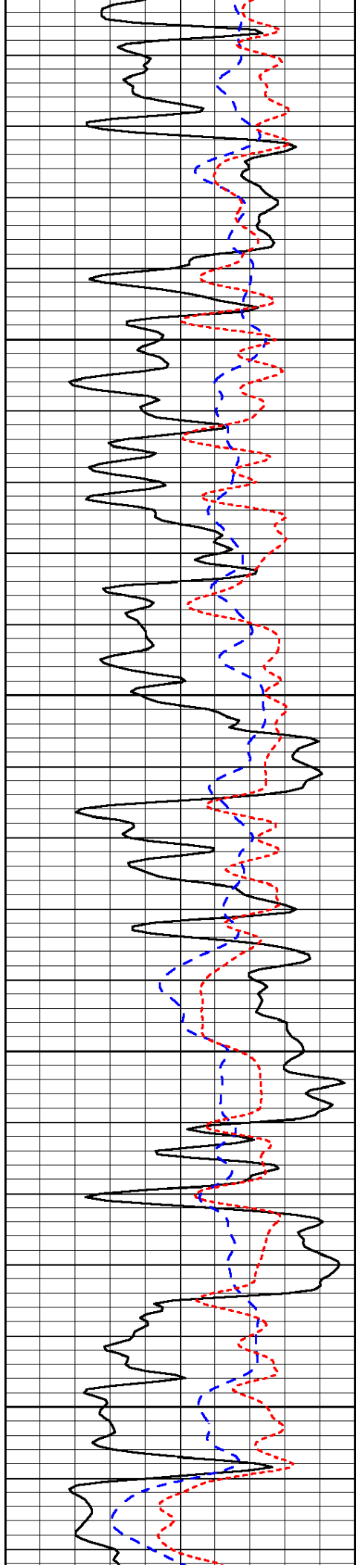
-33

-32

-31

-31

-31

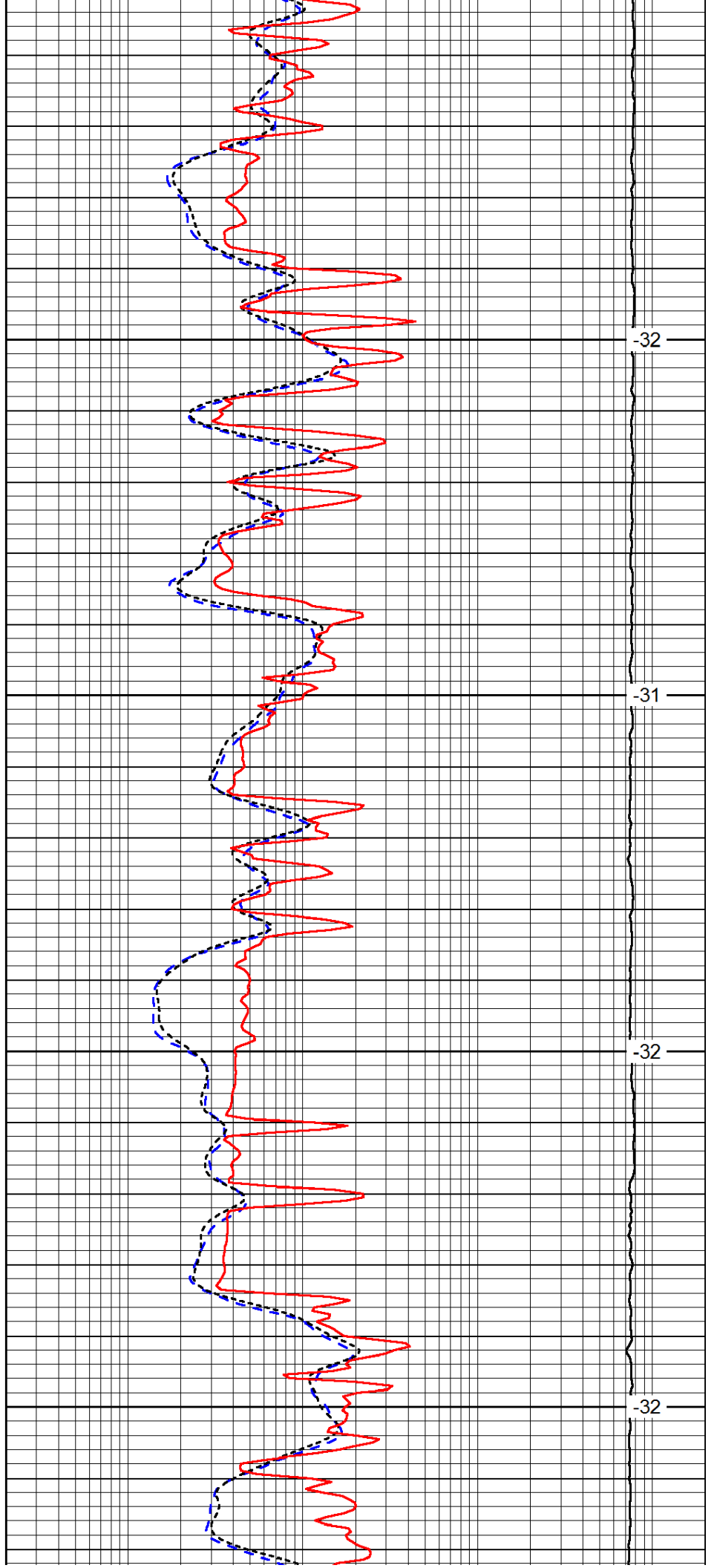


3000

3050

3100

3150

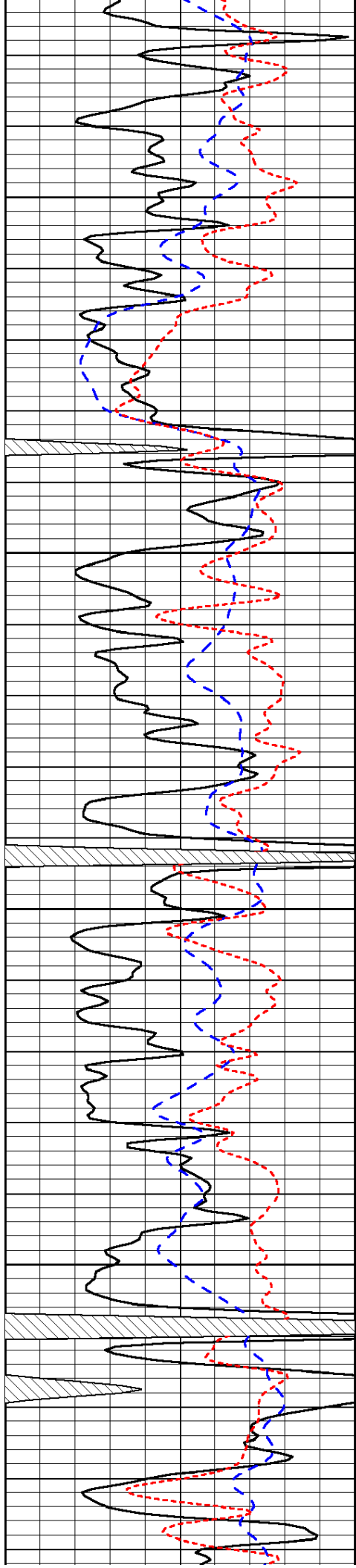


-32

-31

-32

-32

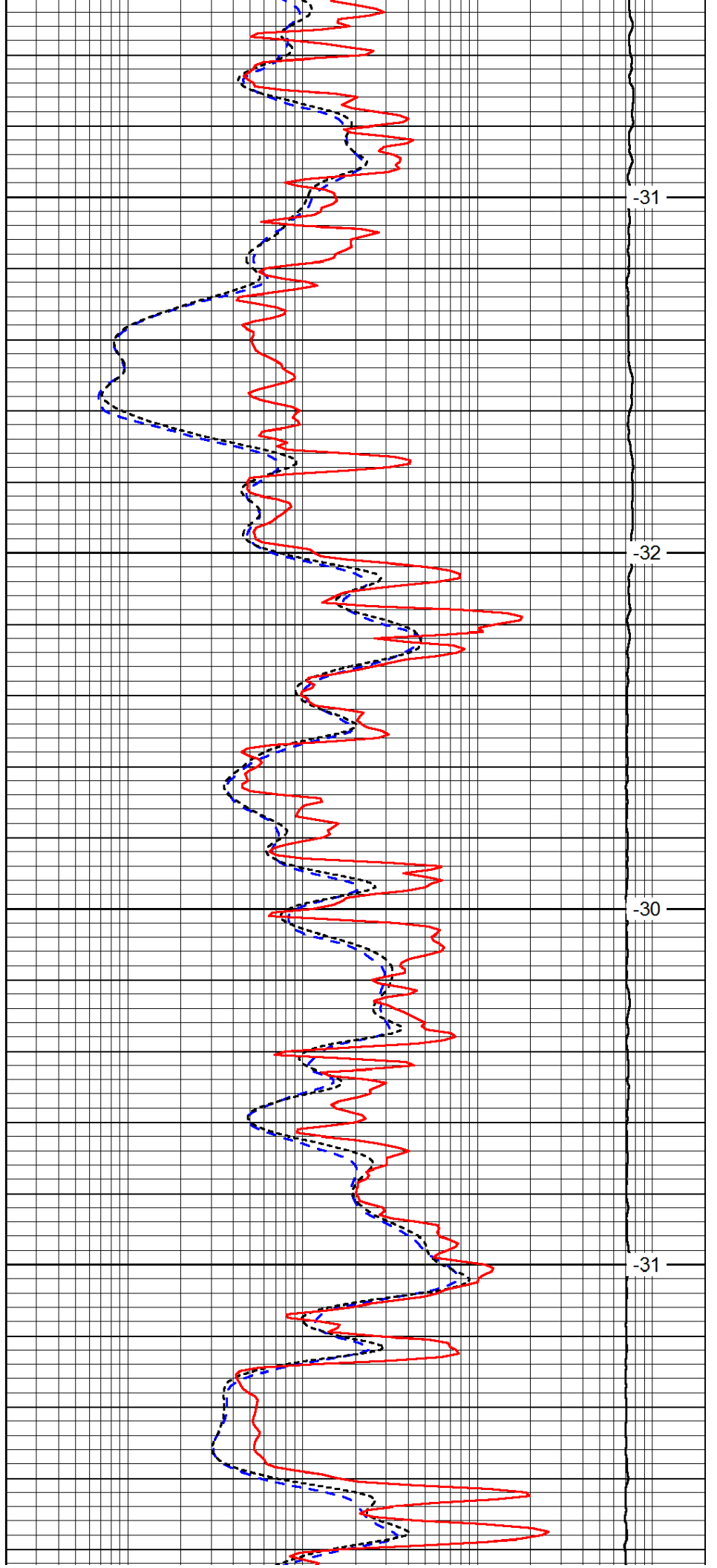


3200

3250

3300

3350

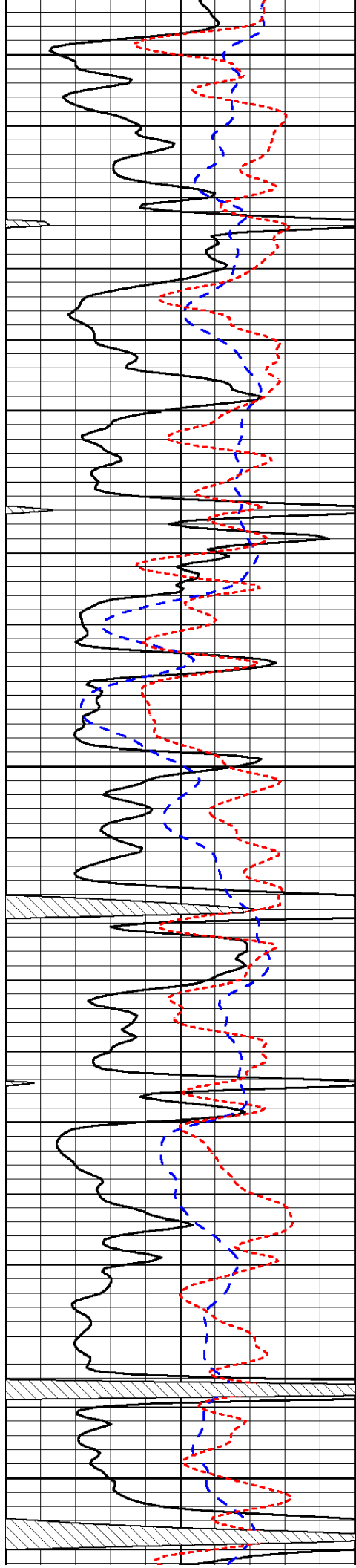


-31

-32

-30

-31



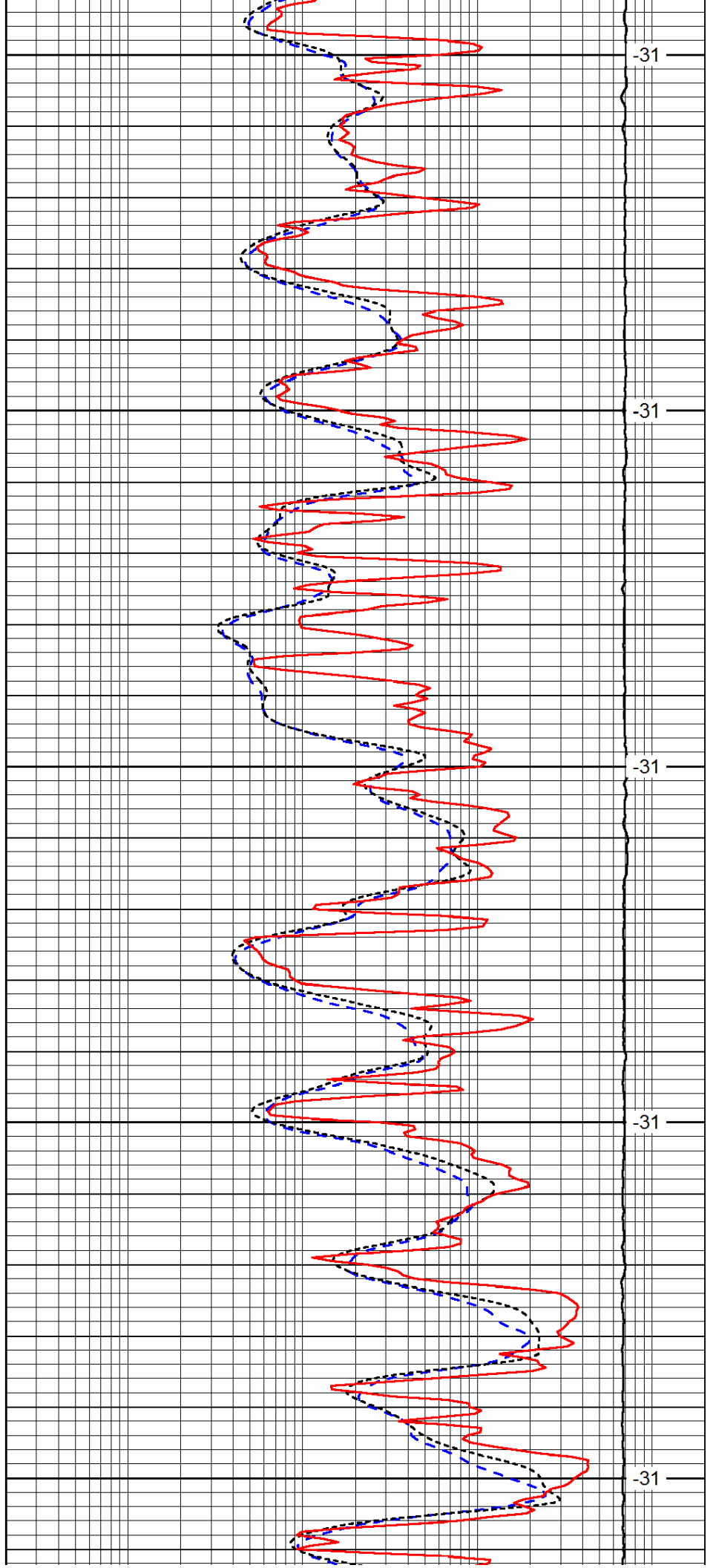
3400

3450

3500

3550

3600



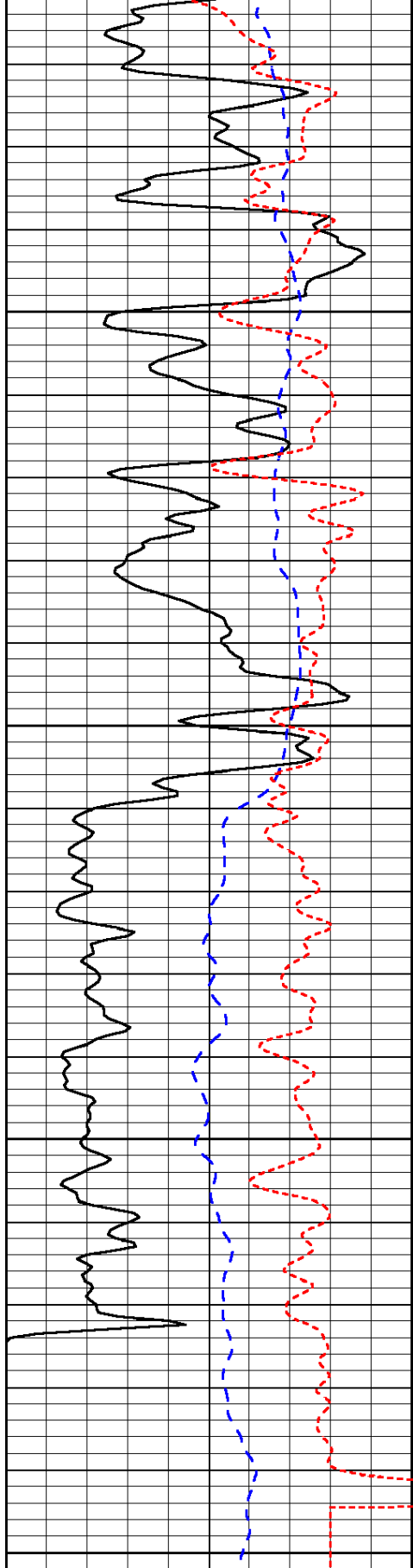
-31

-31

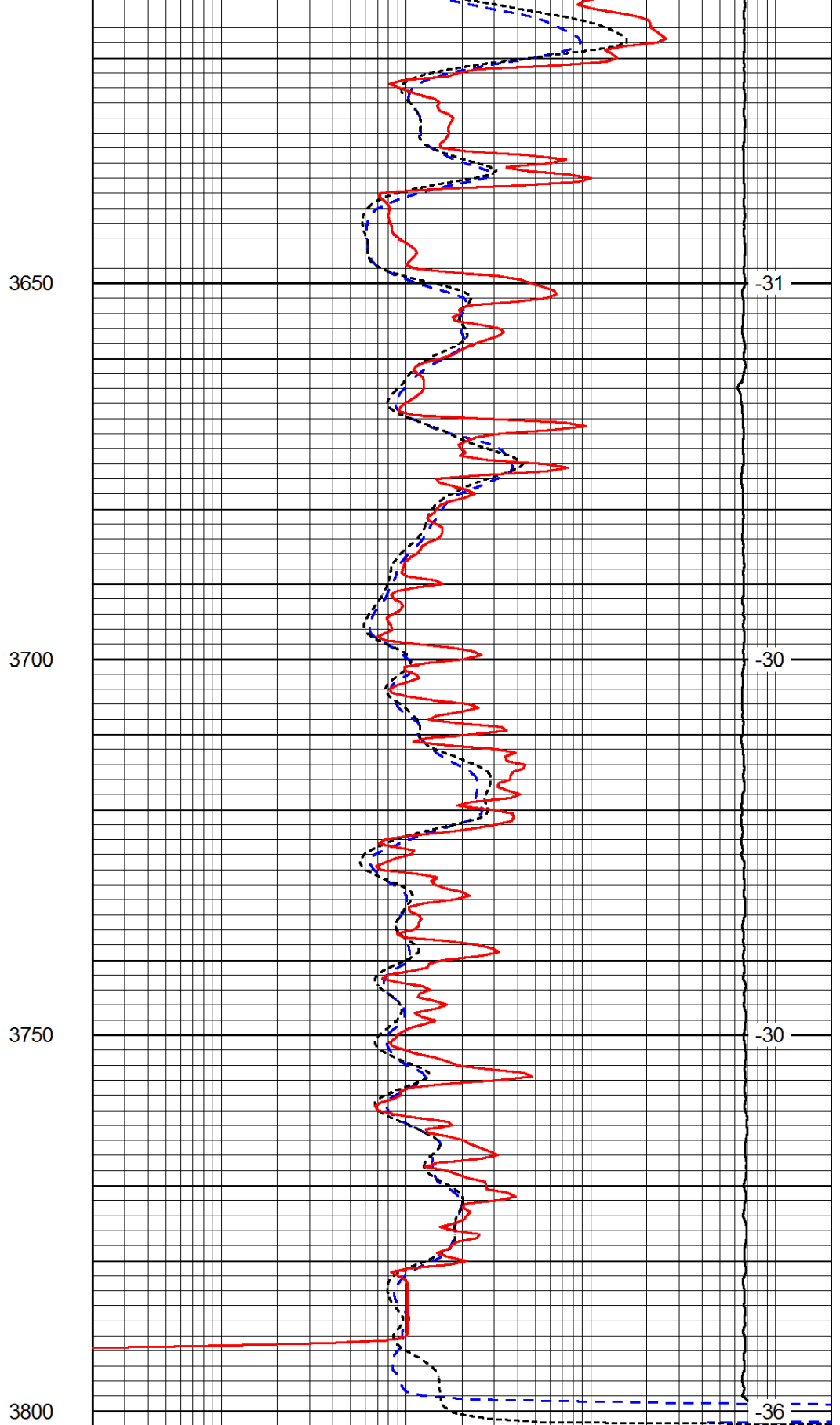
-31

-31

-31



0	Gamma Ray	150
-200	SP (mV)	0
-160	RxoRt	40



0.2	Deep Resistivity	2000
0.2	Medium Resistivity	2000
0.2	Shallow Resistivity	2000
15000	Line Tension	0

LSPD