



Pioneer Energy Services

## Dual Compensated Porosity Log

15-051-26,692-00-00

API No.

Company **TDI, Inc.**

Well **Conell #1**

Field

County **Ellis**

State **Kansas**

Location

**1650' FNL & 1750' FEL**

Other Services  
DIL  
MEL

Sec: **26** Twp: **11S** Rge: **20W**

Permanent Datum **Ground Level** Elevation **2086**

Log Measured From **Kelly Bushing** **10 Ft. Above Perm. Datum**

K.B. **2096**

D.F. **2086**

G.L. **2086**

Elevation

Date **5/13/2014**

Run Number **One**

Type Log **CNL / CDL**

Depth Driller **3800**

Depth Logger **3798**

Bottom Logged Interval **3777**

Top Logged Interval **2500**

Type Fluid In Hole **Chemical**

Salinity, PPM CL **1,300**

Density **9.0**

Level **Full**

Max. Rec. Temp. F **114**

Operating Rig Time **4 Hours**

Equipment -- Location **17 Hays**

Recorded By **C. Desaire**

Witnessed By **Tom Denning**

Borehole Record

Casing Record

Run No.	Bit	From	To	Size	Wgt.	From	To
1	12.25	00	223	8.625	24#	00	223
2	7.875	223	3800				

<<< Fold Here >>>

All interpretations are opinions based on inferences from electrical or other measurements and we cannot and do not guarantee the accuracy or correctness of any interpretation, and we shall not, except in the case of gross or willful negligence on our part, be liable or responsible for any loss, costs, damages, or expenses incurred or sustained by anyone resulting from any interpretation made by any of our officers, agents or employees. These interpretations are also subject to our general terms and conditions set out in our current Price Schedule.

### Comments

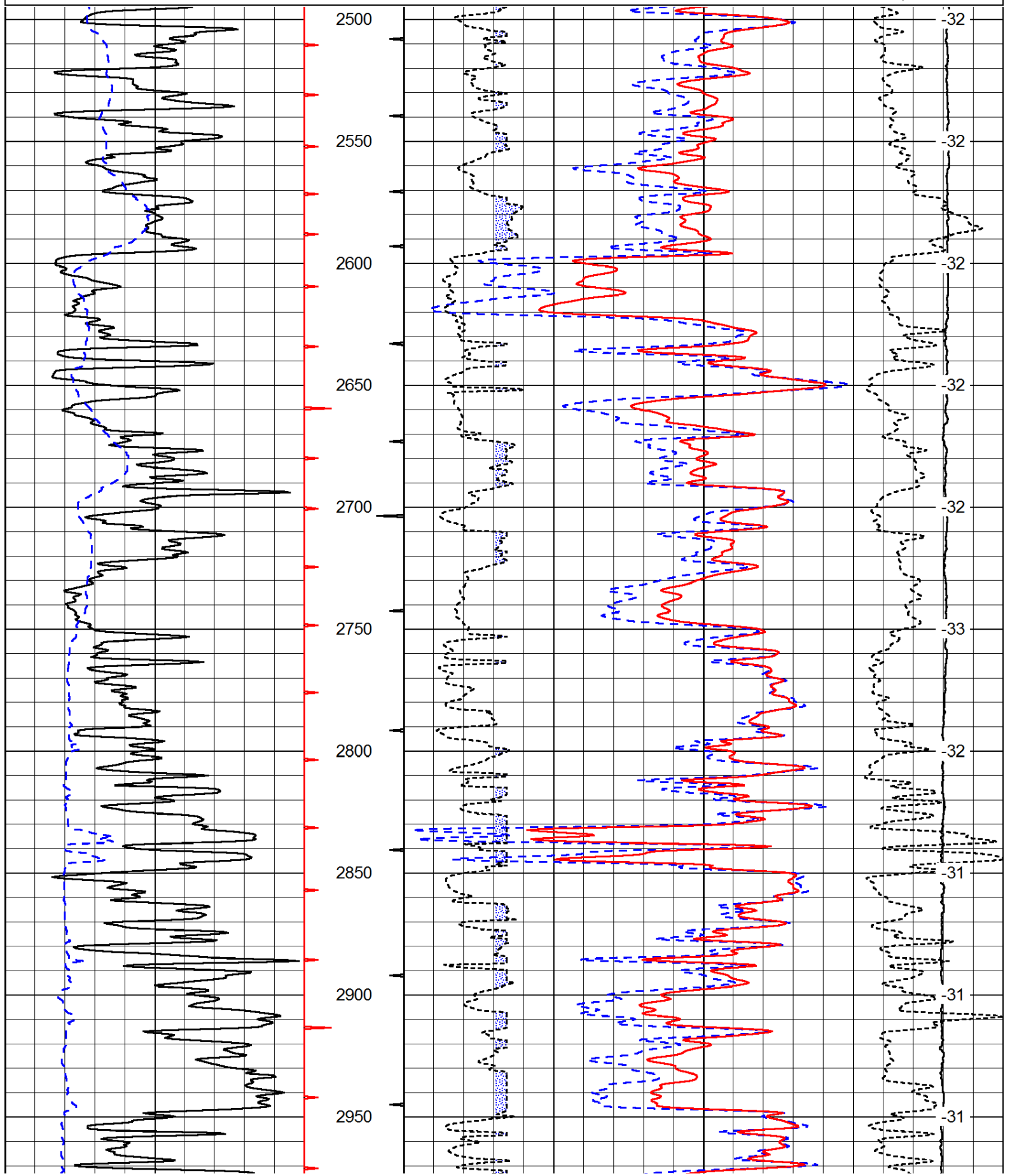
Thank you for using Pioneer Energy Services  
www.pioneerenergy.com  
785 625 3858

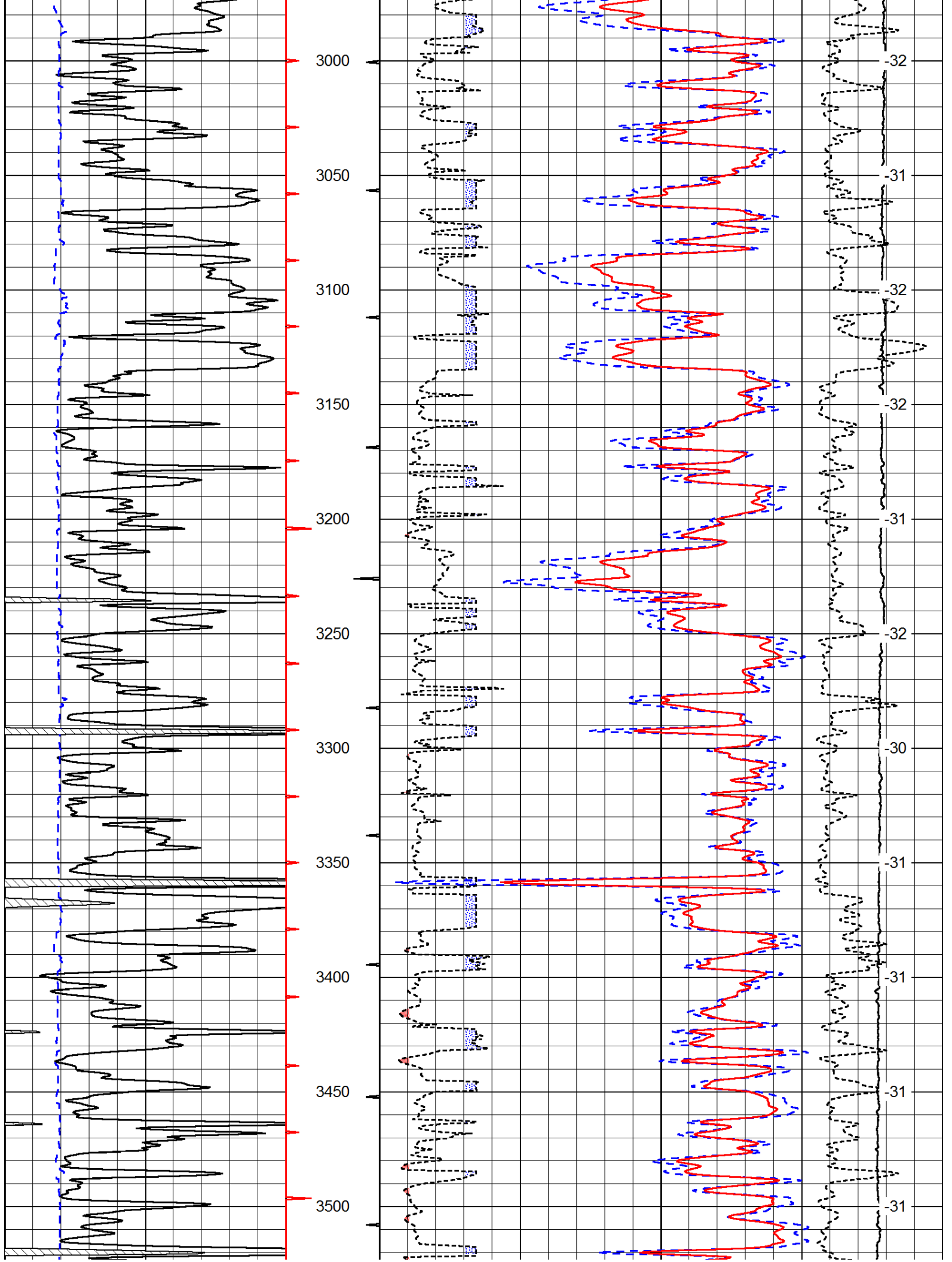
Ellis KS, N to Homestead Rd,  
2 E, 1 1/2 N, W Into

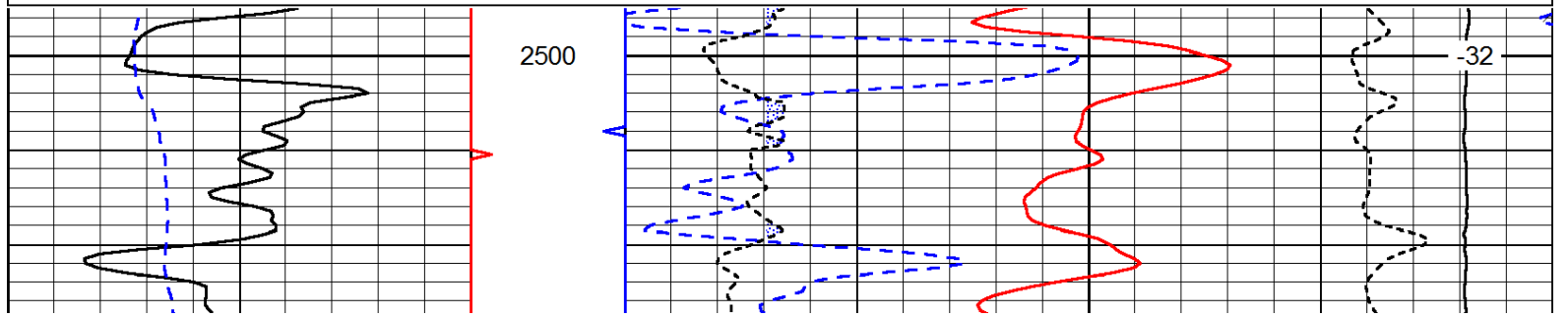
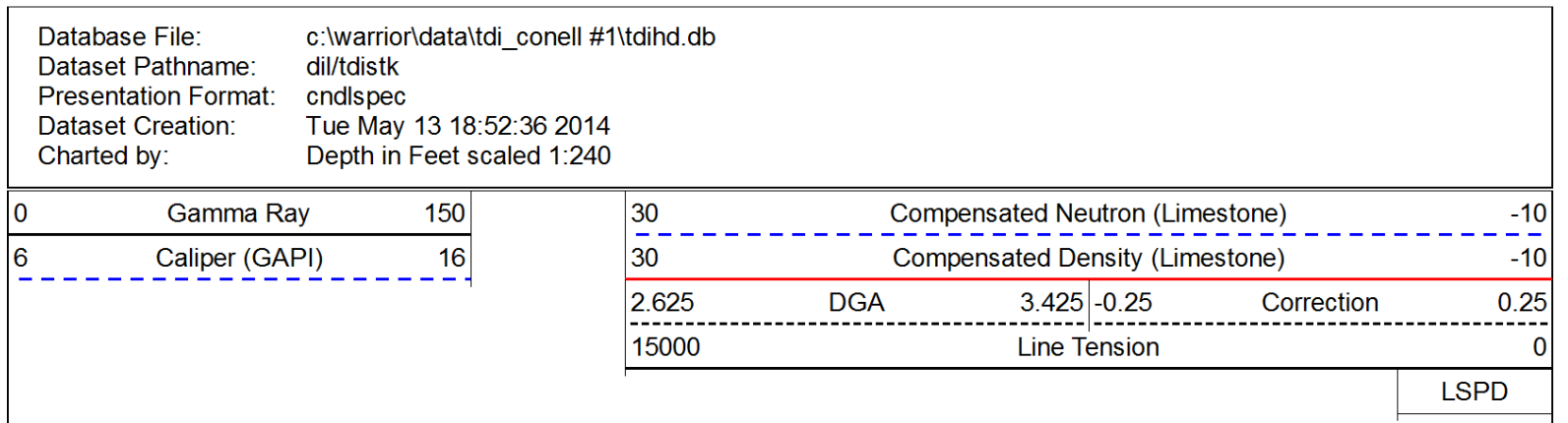
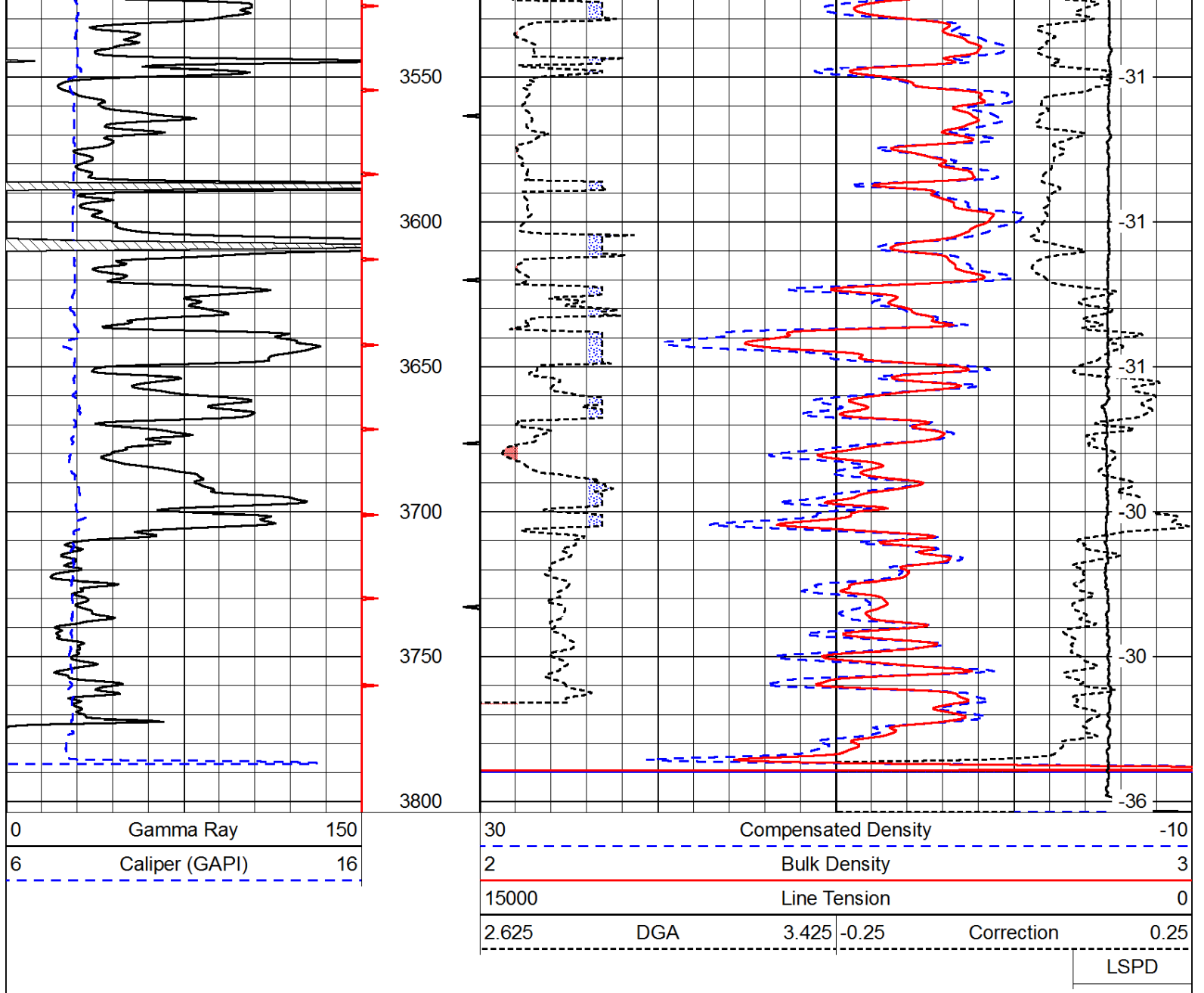
Database File: c:\warrior\data\tjd\_conell #1\tjdihd.db  
 Dataset Pathname: dil\tdistk  
 Presentation Format: cdl  
 Dataset Creation: Tue May 13 18:52:36 2014  
 Charted by: Depth in Feet scaled 1:600

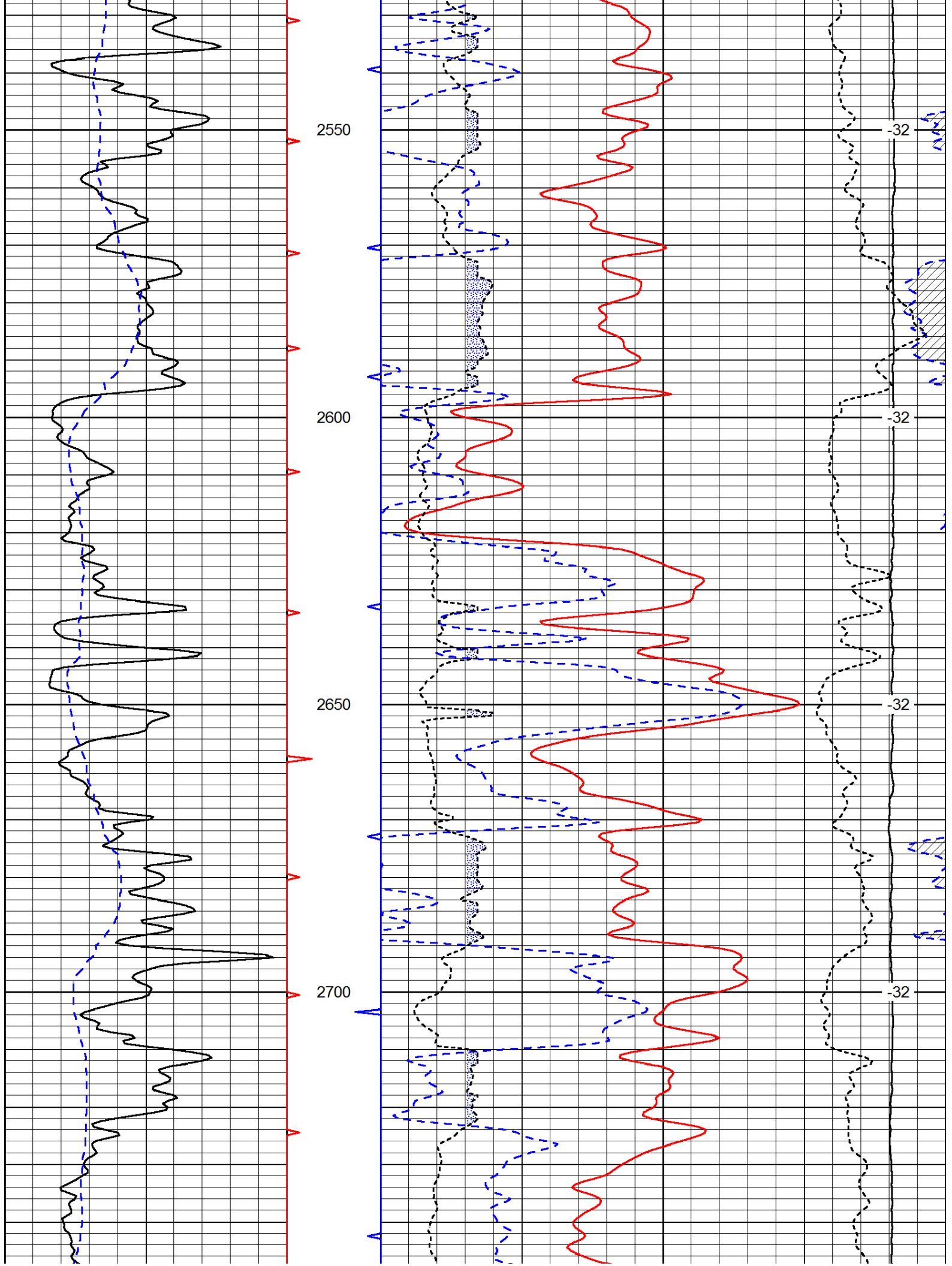
0	Gamma Ray	150
6	Caliper (GAPI)	16

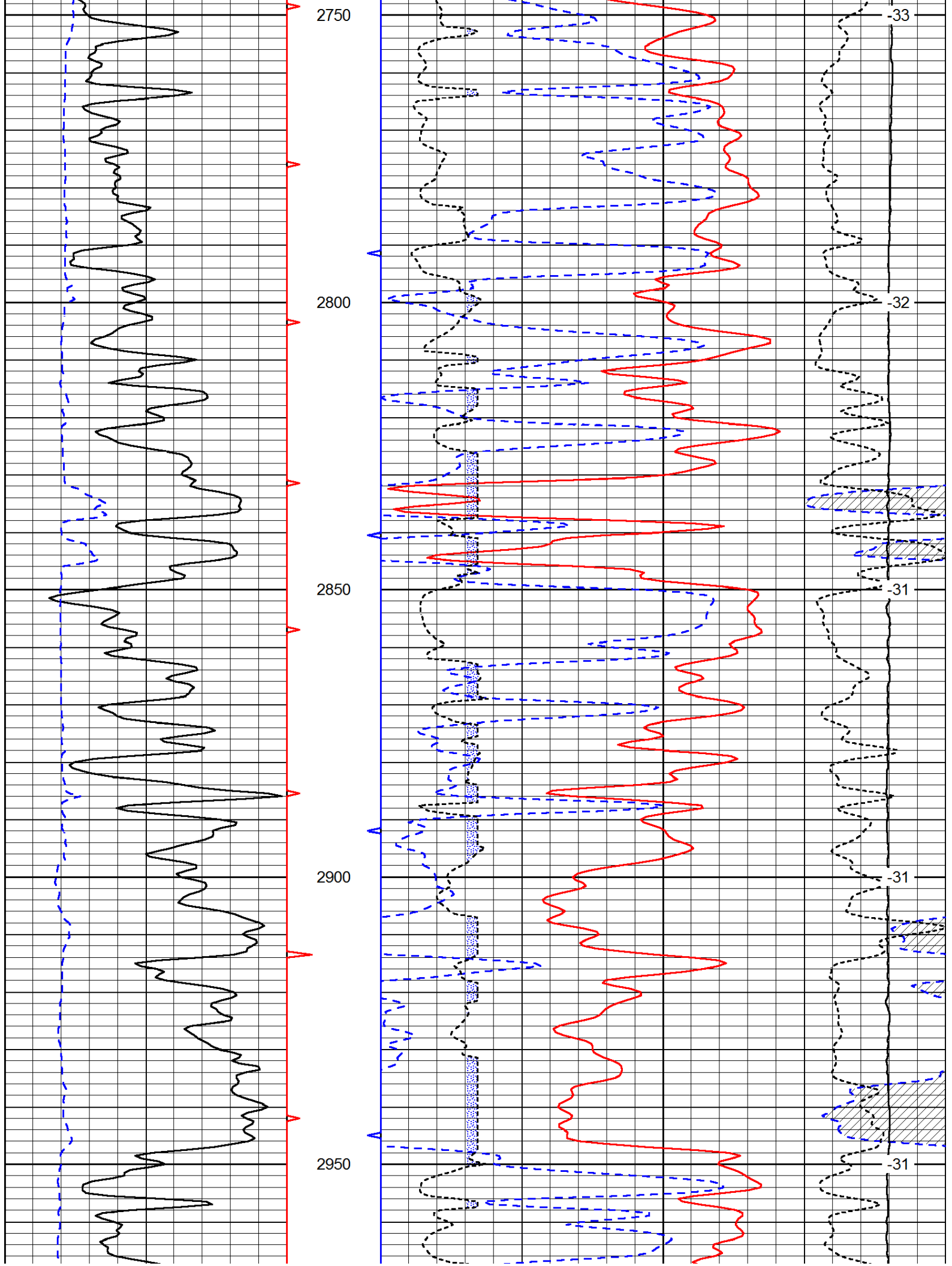
30	Compensated Density		-10
2	Bulk Density		3
15000	Line Tension		0
2.625	DGA	3.425 -0.25	Correction 0.25
LSPD			

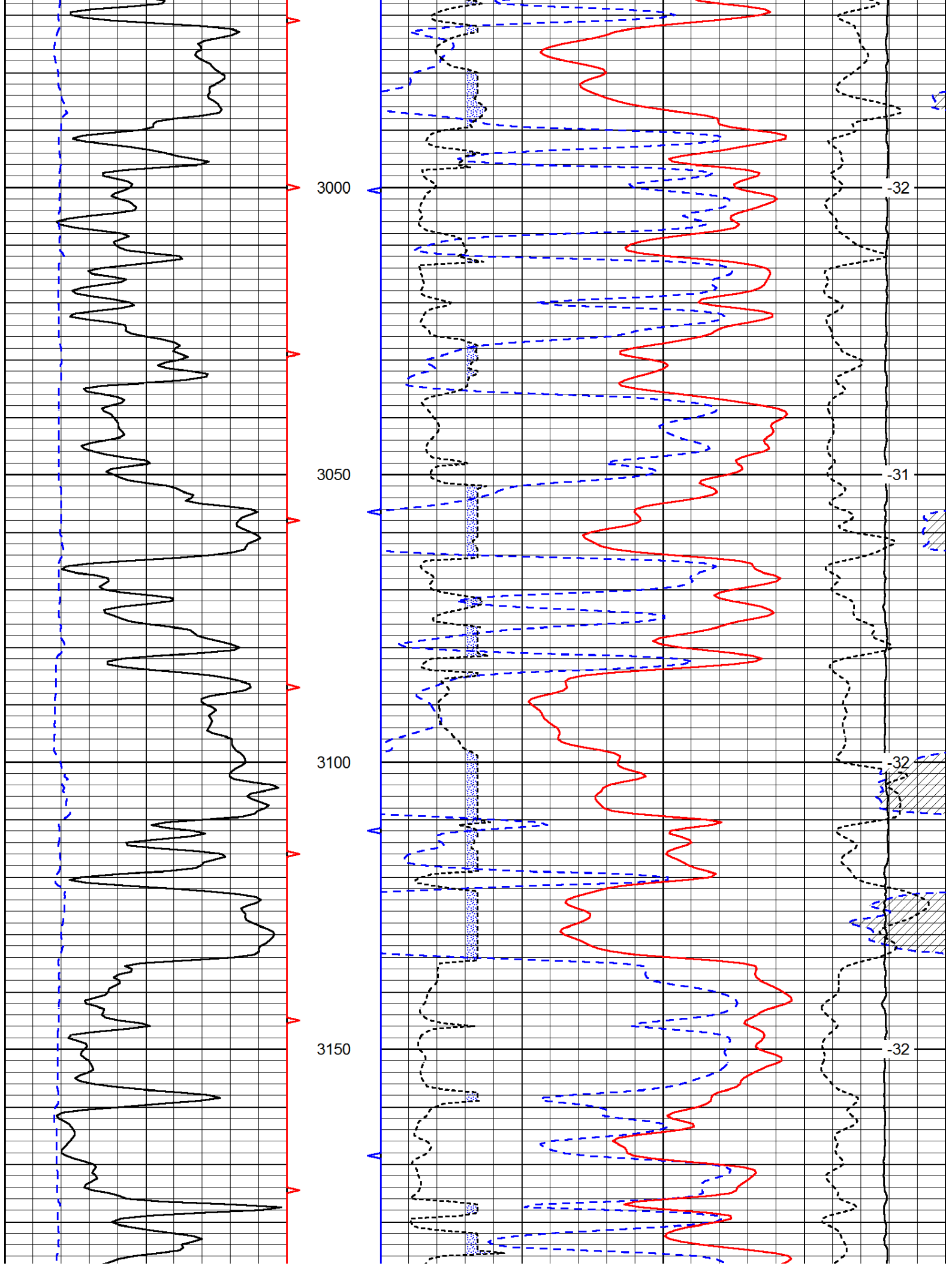


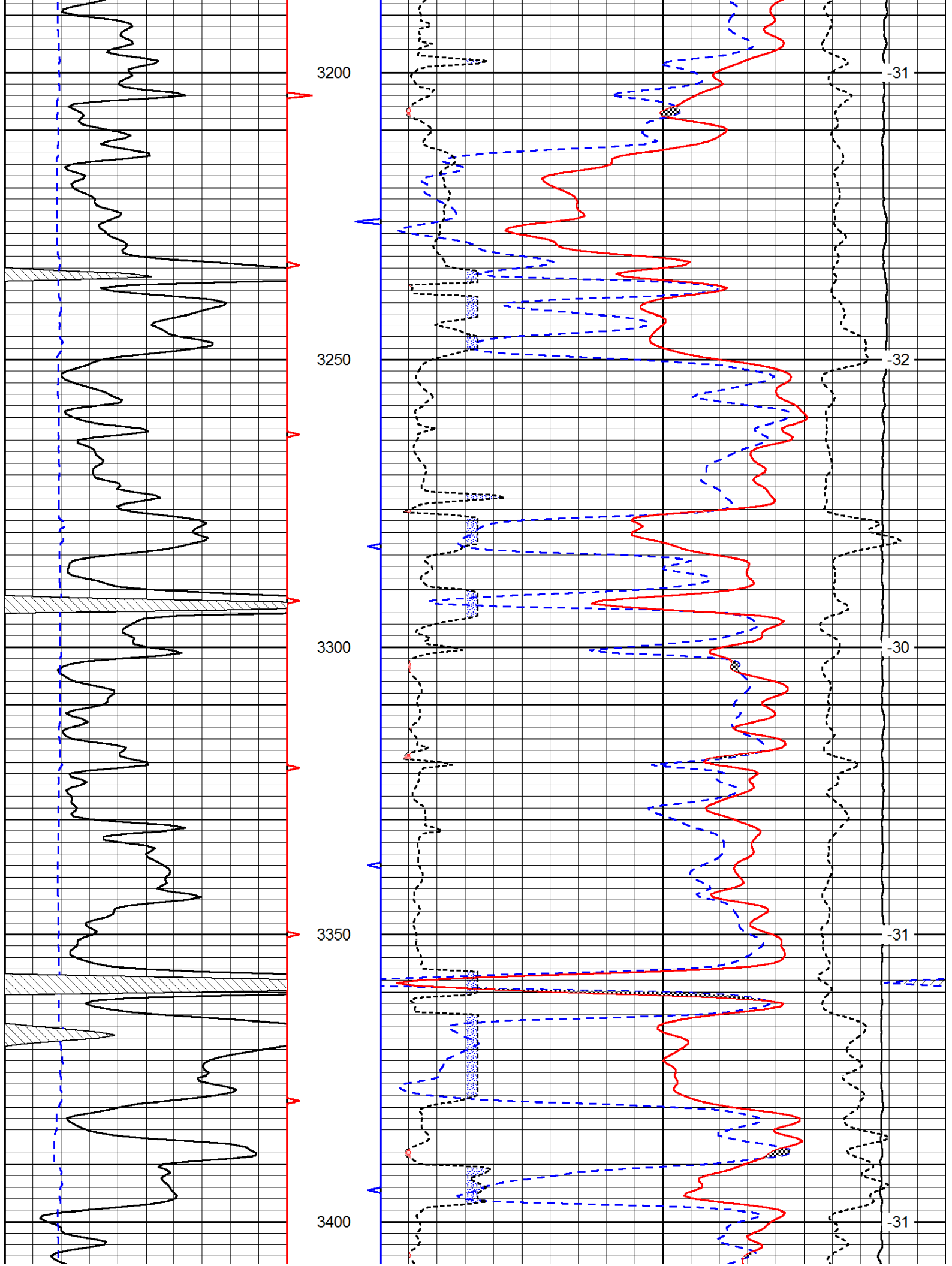




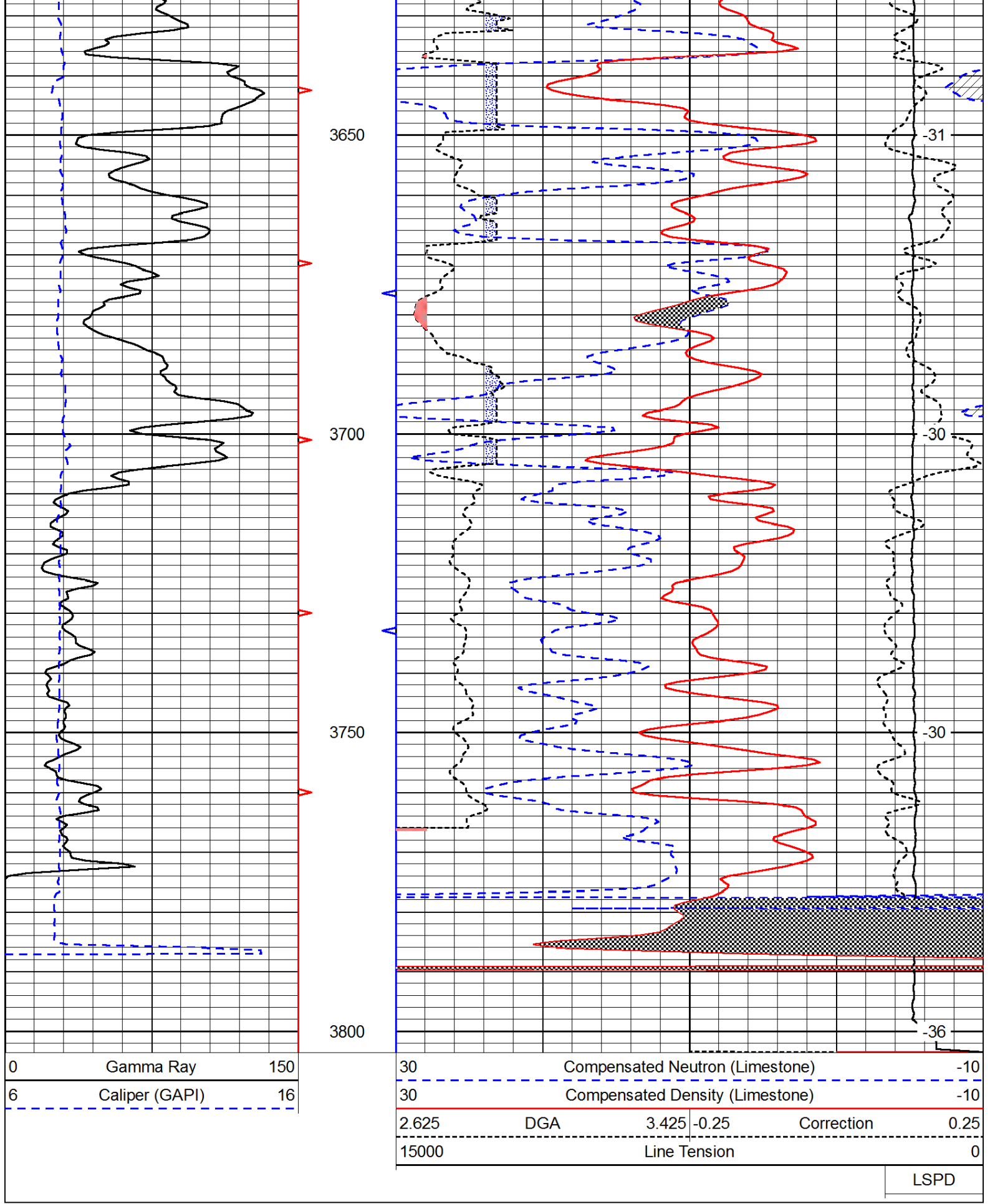












LSPD