



**COMPLETION
& PRODUCTION
SERVICES CO.**

**MICRO
LOG**

Company BAIRD OIL COMPANY, LLC.
Well ESTHER WORCESTER #4-13
Field WORCESTER EAST
County GRAHAM State KANSAS

Company BAIRD OIL COMPANY, LLC.
Well ESTHER WORCESTER #4-13
Field WORCESTER EAST
County GRAHAM
State KANSAS

Location: API #: 15-065-24037
1610' FNL & 1600' FEL
SEC 13 TWP 7S RGE 22W
Permanent Datum GROUND LEVEL Elevation 2168
Log Measured From KELLY BUSHING 8' A.G.L.
Drilling Measured From KELLY BUSHING
Other Services RAG
Elevation K.B. 2176
D.F.
G.L. 2168

Date	5-11-14
Run Number	TWO
Depth Driller	3800
Depth Logger	3799
Bottom Logged Interval	3796
Top Log Interval	3000
Casing Driller	219
Casing Logger	219
Bit Size	7.875
Type Fluid in Hole	CHEMICAL MUD
Density / Viscosity	9.1 / 55
pH / Fluid Loss	10.0 / 7.2
Source of Sample	FLOWLINE
Rm @ Meas. Temp	0.85 @ 88F
Rmf @ Meas. Temp	0.64 @ 88F
Rmc @ Meas. Temp	1.02 @ 88F
Source of Rmf / Rmc	MEASURED
Rm @ BHT	.660 @ 113F
Time Circulation Stopped	2 HOURS
Time Logger on Bottom	9:00 A.M.
Maximum Recorded Temperature	113F
Equipment Number	860
Location	HAYS, KS.
Recorded By	RUPP
Witnessed By	RICHARD BELL

<<< Fold Here >>>

All interpretations are opinions based on inferences from electrical or other measurements and we cannot and do not guarantee the accuracy or correctness of any interpretation, and we shall not, except in the case of gross or willful negligence on our part, be liable or responsible for any loss, costs, damages, or expenses incurred or sustained by anyone resulting from any interpretation made by any of our officers, agents or employees. These interpretations are also subject to our general terms and conditions set out in our current Price Schedule.

Comments

NABORS COMPLETION & PRODUCTION SERVICES
785-628-6395
THANK YOU FOR YOUR BUSINESS
DIRECTIONS: BOGUE & #24, 1 1/2W TO 340TH RD., 4N TO W RD., 1/2W, S INTO.



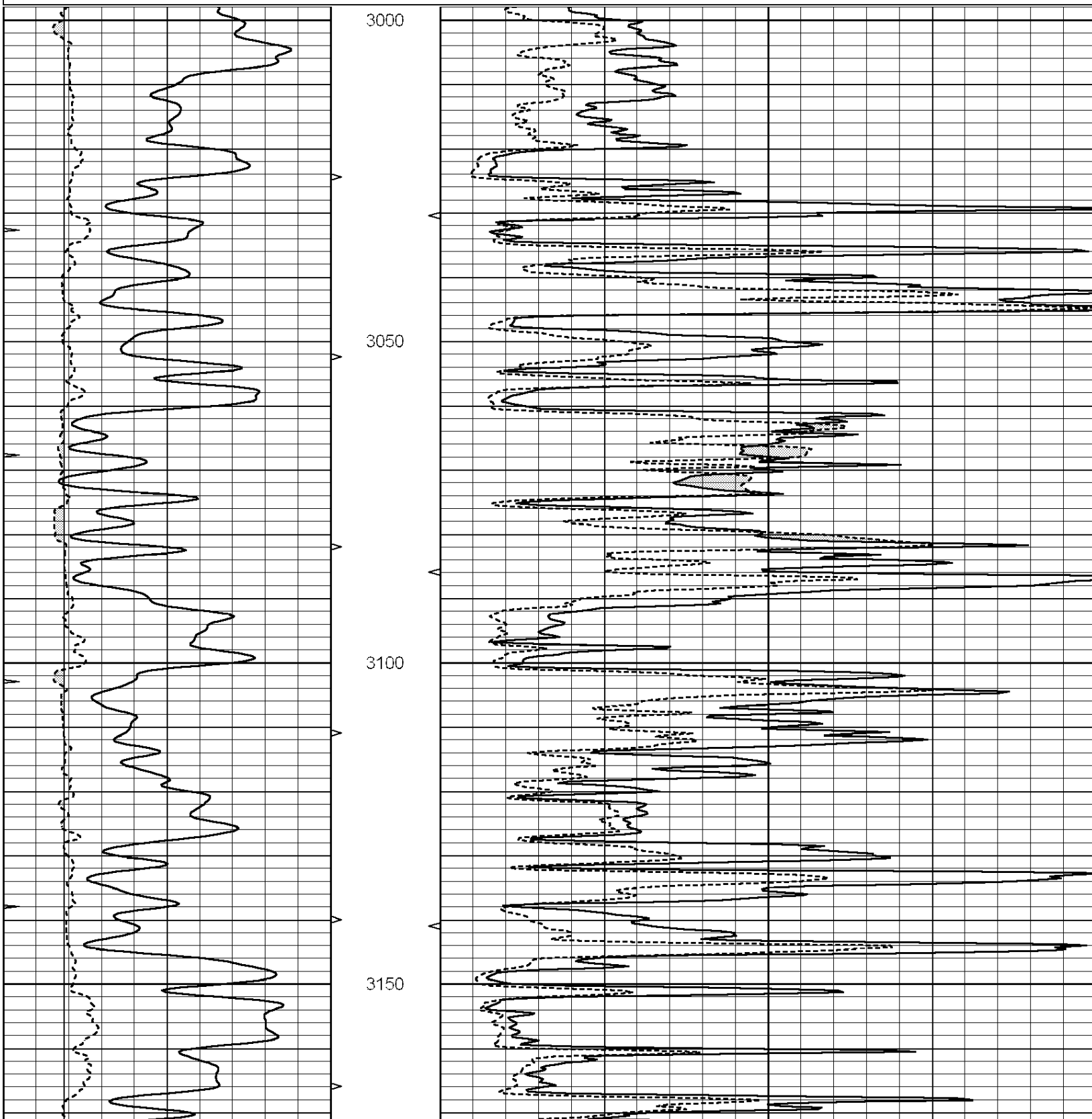
**COMPLETION
& PRODUCTION**

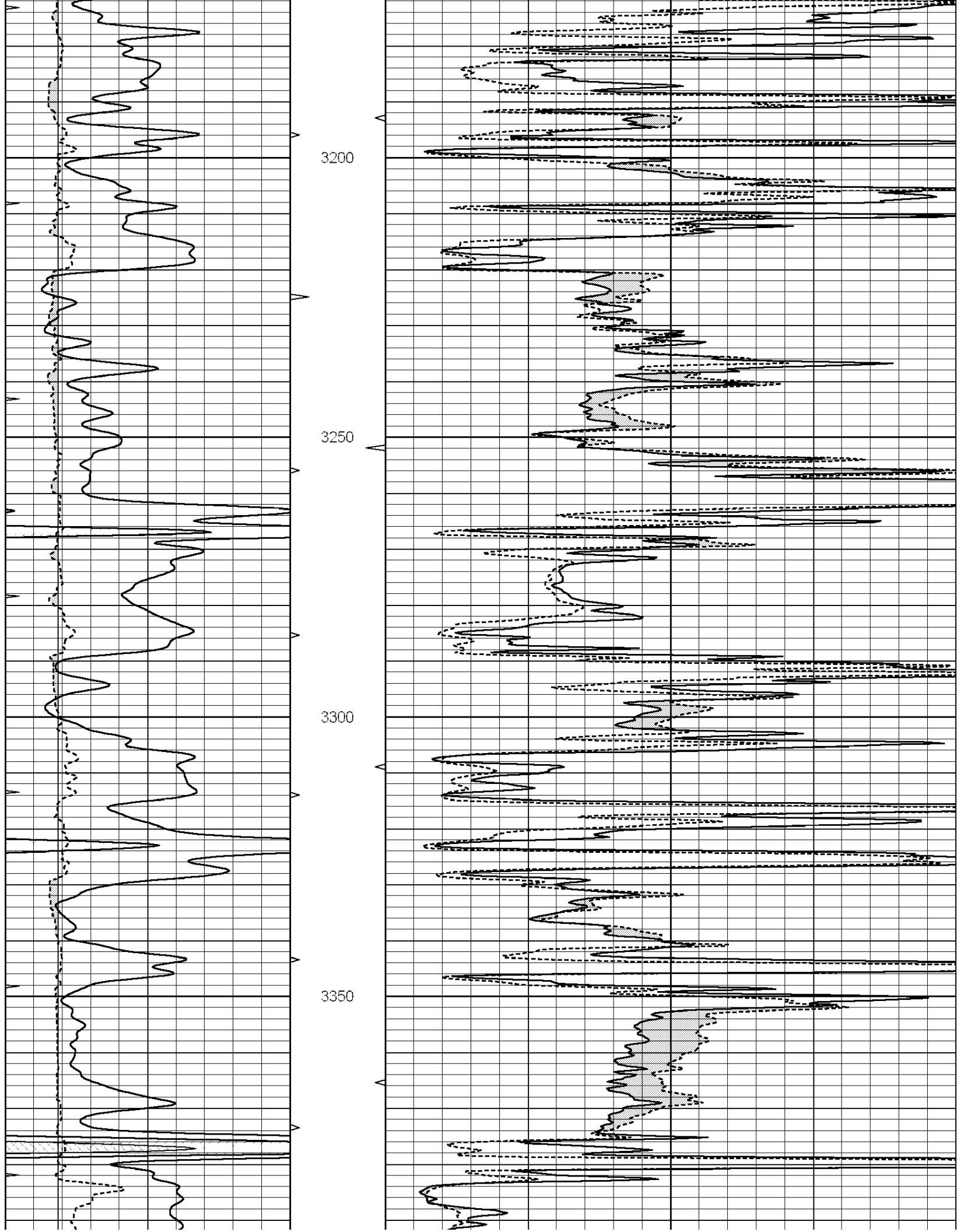
MAIN SECTION

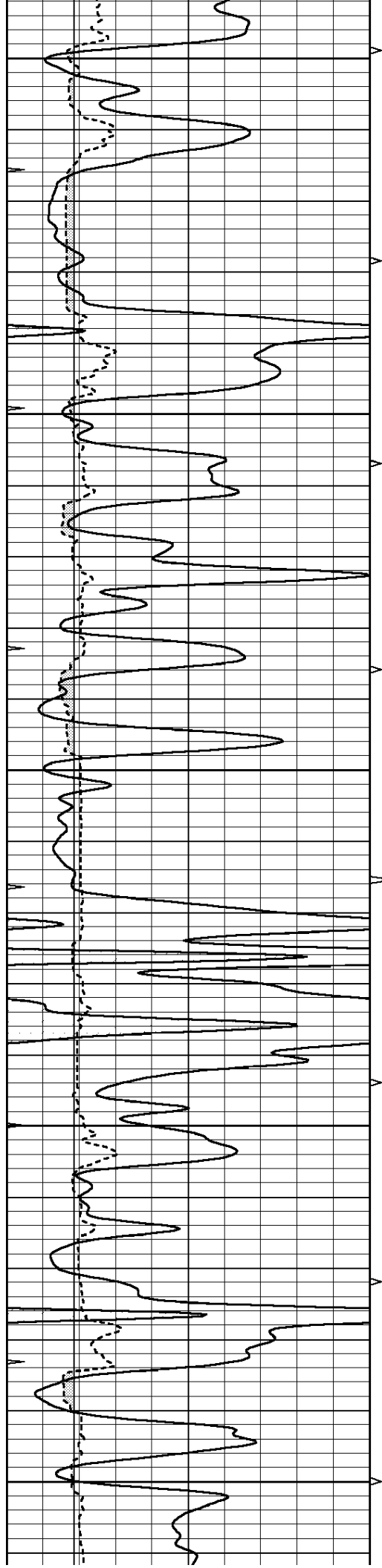
Database File: 24430rag.db
 Dataset Pathname: pass6.1
 Presentation Format: _micro
 Dataset Creation: Sun May 11 11:19:09 2014 by Calc Open-Cased 090629
 Charted by: Depth in Feet scaled 1:240

0	GAMMA RAY (GAPI)	150
6	MELCAL (in)	16
0	MINMK	20

0	MEL1.5 (Ohm-m)	40
0	MEL2.0 (Ohm-m)	40







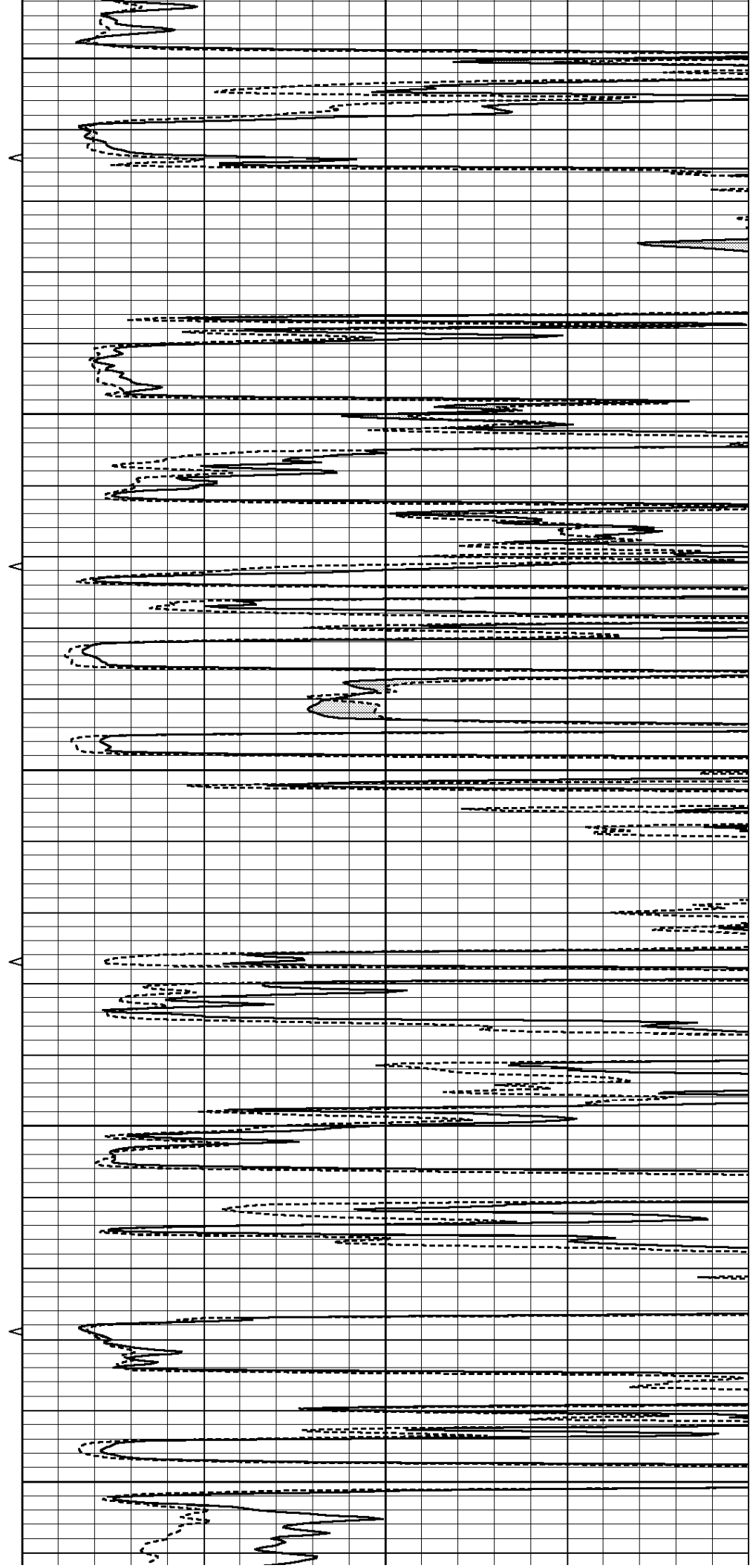
3400

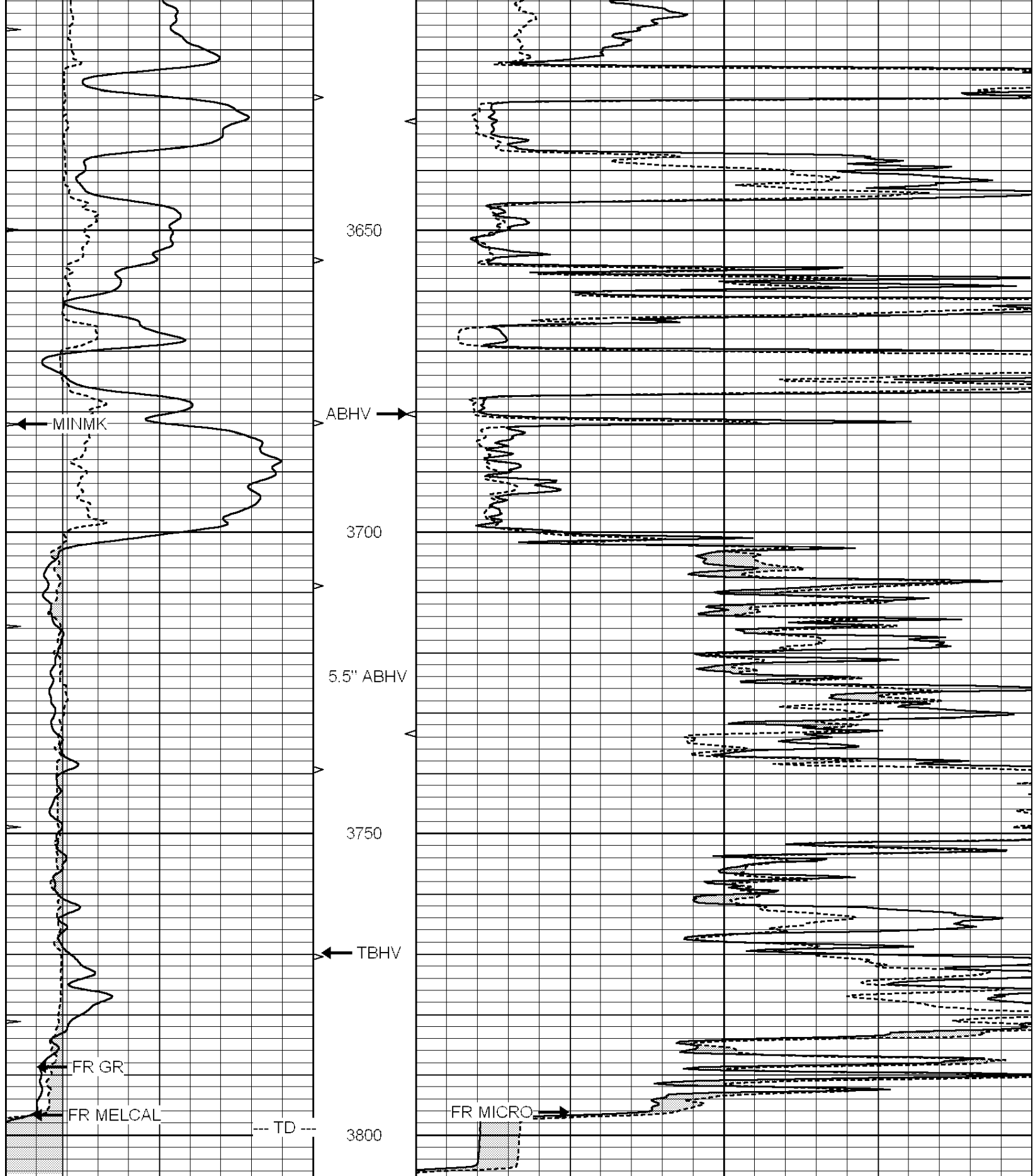
3450

3500

3550

3600





0	GAMMA RAY (GAPI)	150
6	MELCAL (in)	16
0	MINMK	20

0	MEL1.5 (Ohm-m)	40
0	MEL2.0 (Ohm-m)	40

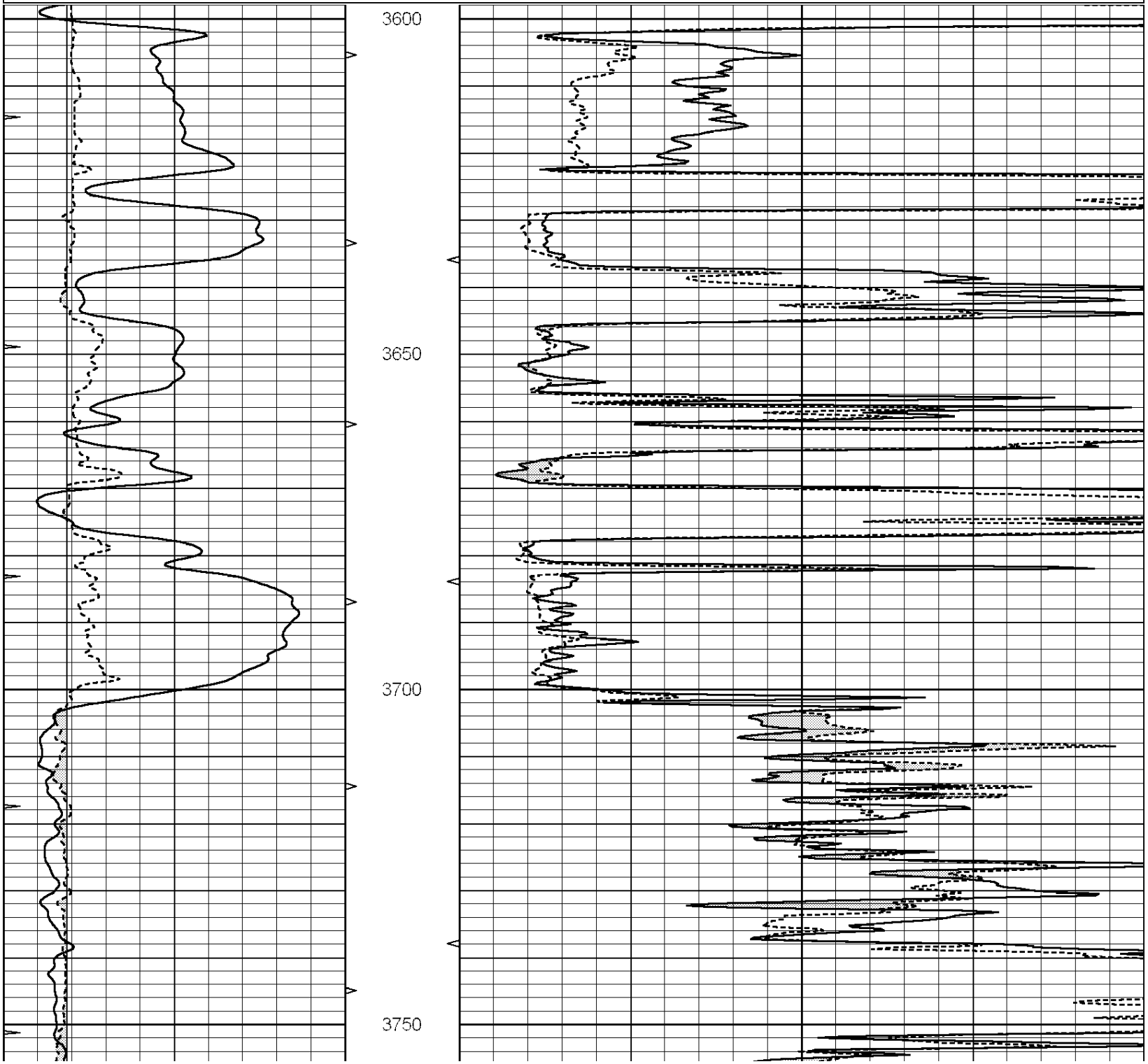
REPEAT SECTION

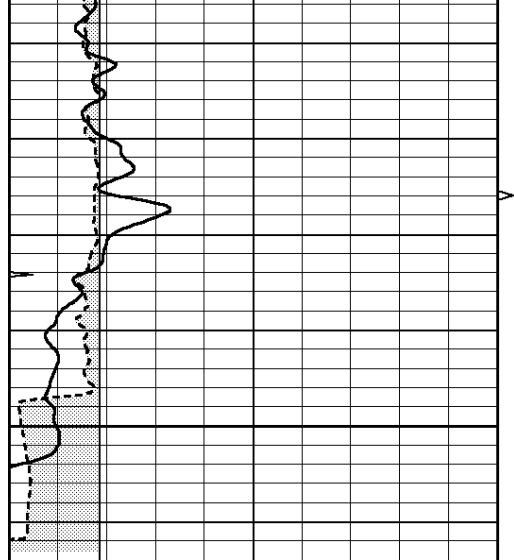
Database File: 24430rag.db
 Dataset Pathname: pass5.1A
 Presentation Format: _micro
 Dataset Creation: Sun May 11 10:50:10 2014 by Calc Open-Cased 090629
 Charted by: Depth in Feet scaled 1:240

0	GAMMA RAY (GAPI)	150
6	MELCAL (in)	16

0	MINMK	20

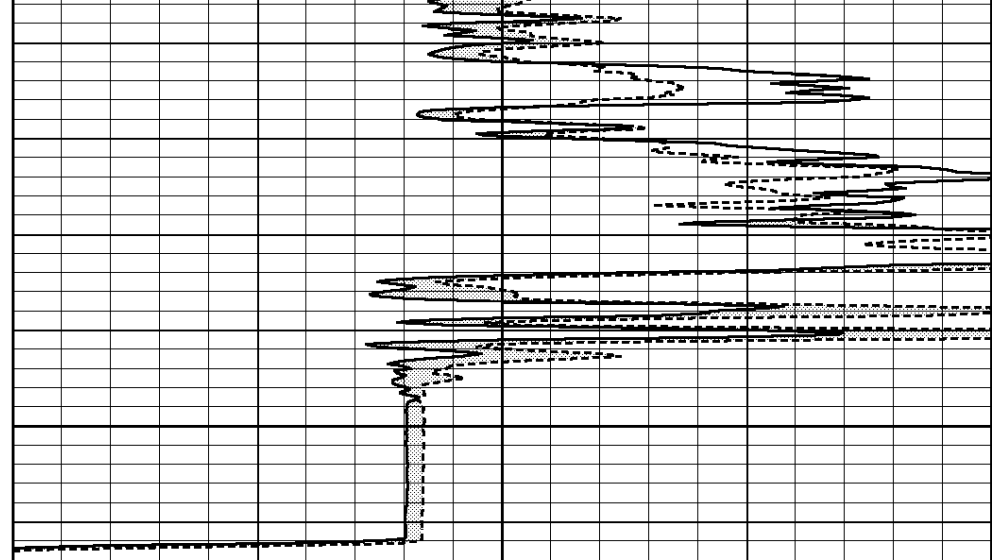
0	MEL1.5 (Ohm-m)	40
0	MEL2.0 (Ohm-m)	40





3800

0	GAMMA RAY (GAPI)	150
6	MELCAL (in)	16
0	MINMK	20



0	MEL1.5 (Ohm-m)	40
0	MEL2.0 (Ohm-m)	40

Calibration Report

Database File: 24430rag.db
 Dataset Pathname: pass6.1
 Dataset Creation: Sun May 11 11:19:09 2014 by Calc Open-Cased 090629

MICRO Calibration Report

Serial Number:	MICRO4	
Tool Model:	PROBE	
Performed:	Sun May 11 10:51:29 2014	
Caliper Calibration:	Gain=2.847	Offset=-9.500
References	Low Cal 8.600	High Cal 14.000
Readings	5.934	7.767
1.5" Calibration:	Gain=42.000	Offset=-1.400
References	Low Cal 0.000	High Cal 20.000
Readings	0.013	1.547
2" Calibration:	Gain=42.000	Offset=-0.600
References	Low Cal 0.000	High Cal 20.000
Readings	0.017	1.202

Gamma Ray Calibration Report

Serial Number:	GR2	
Tool Model:	OPEN	
Performed:	Sun May 11 11:08:27 2014	
Calibrator Value:	200.0	GAPI
Background Reading:	0.0	cps
Calibrator Reading:	740.0	cps
Sensitivity:	0.3800	GAPI/cps