



Pioneer Energy Services

Radiation Guard Log

15-023-21,389-00-00

API No.

Company **Berexco LLC**
 Well **Vada #2-17**
 Field **South Jones Canyon**
 County **Cheyenne** State **Kansas**

Location **610' FSL & 660' FWL**

Sec: **17** Twp: **1S** Rge: **37W**

Other Services
MEL

Elevation

K.B. 3132
D.F. 3119
G.L. 3119

Permanent Datum **Ground Level** Elevation **3119**
 Log Measured From **Kelly Bushing** 13 Ft. Above Perm. Datum
 Drilling Measured From **Kelly Bushing**

Date	4/30/2014	
Run Number	One	
Depth Driller	4660	
Depth Logger	4646	
Bottom Logged Interval	4645	
Top Log Interval	300	
Casing Driller	8.625 @ 310	
Casing Logger	309	
Bit Size	7.875	
Type Fluid in Hole	Chemical	
Salinity,ppm CL	700	
Density / Viscosity	9.5 59	
pH / Fluid Loss	10.5 7.2	
Source of Sample	Flowline	
Rm @ Meas. Temp	.90 @ 60	
Rmf @ Meas. Temp	.68 @ 60	
Rmc @ Meas. Temp	1.22 @ 60	
Source of Rmf / Rmc	Charts	
Rm @ BHT	.44 @ 123	
Operating Rig Time	4 Hours	
Max Rec. Temp. F	123	
Equipment Number	108	
Location	Hays	
Recorded By	J. Long	
Witnessed By	Pete Vollmer	

<<< Fold Here >>>

All interpretations are opinions based on inferences from electrical or other measurements and we cannot and do not guarantee the accuracy or correctness of any interpretation, and we shall not, except in the case of gross or willful negligence on our part, be liable or responsible for any loss, costs, damages, or expenses incurred or sustained by anyone resulting from any interpretation made by any of our officers, agents or employees. These interpretations are also subject to our general terms and conditions set out in our current Price Schedule.

Comments

Thank you for using Pioneer Energy Services
www.pioneerenergy.com
 785 625 3858

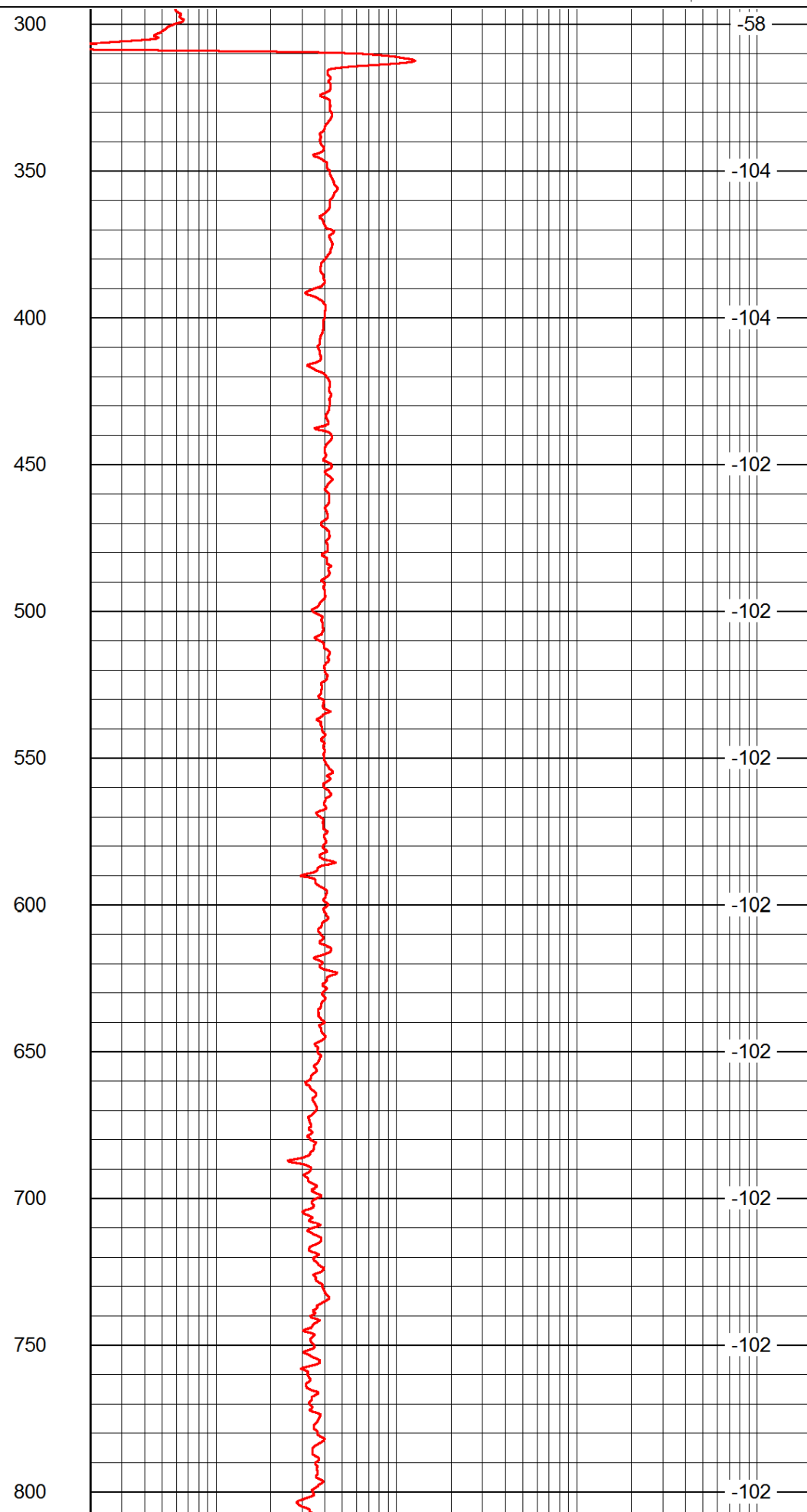
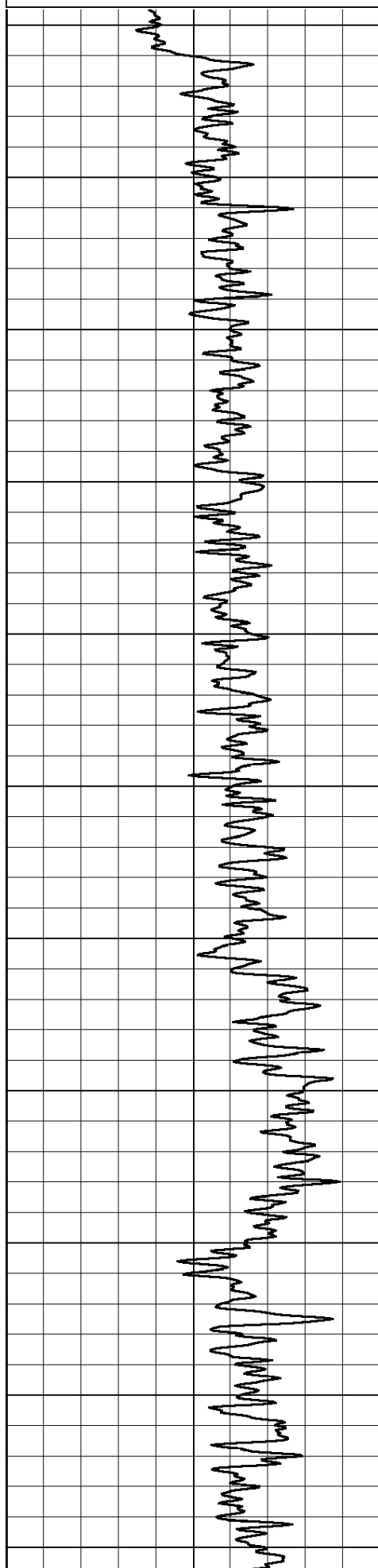
Bird City, North to DD Road, 2 East, 2 South, East Into

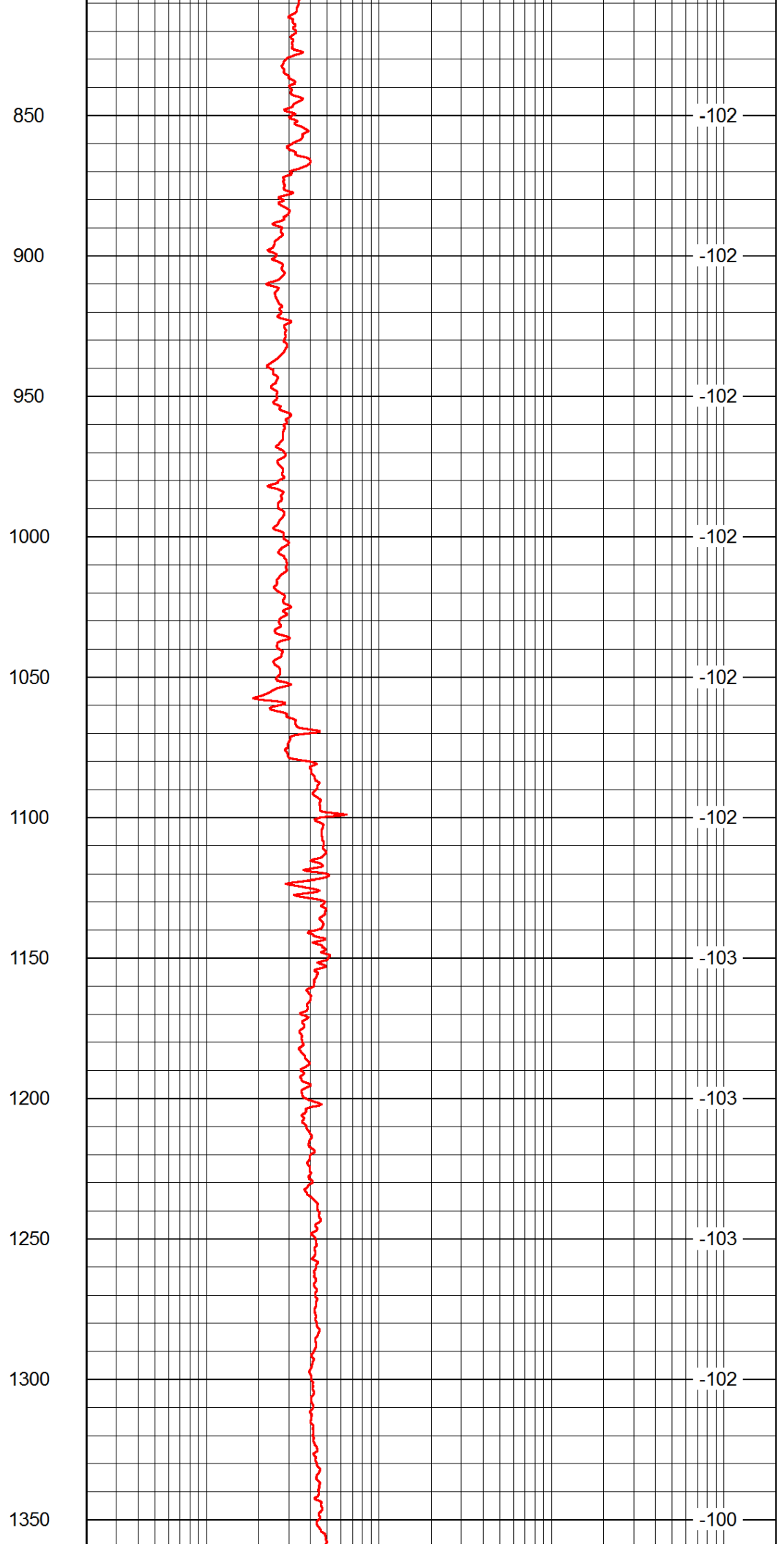
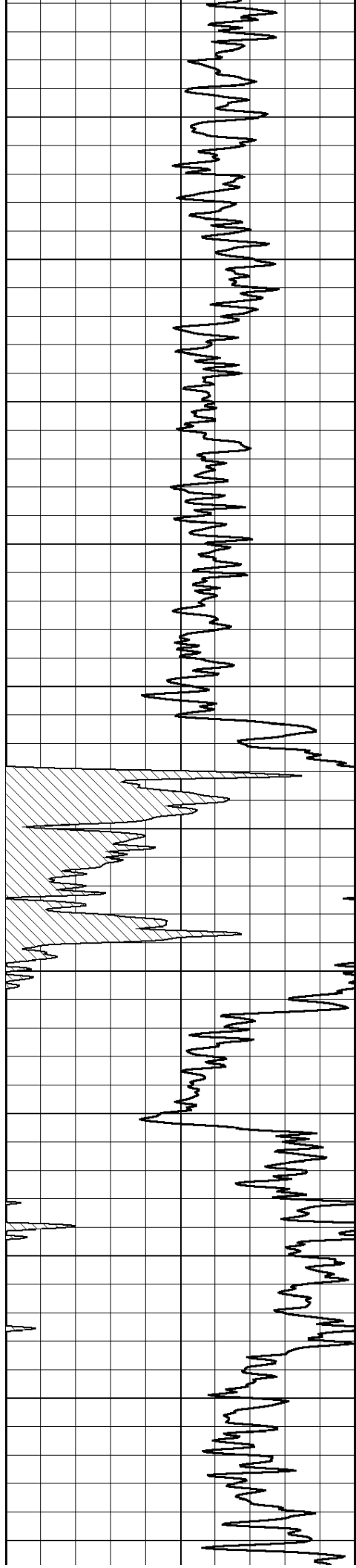
Database File: c:\warrior\data\berexco_vada #2-17\berexco_vada_2-17hd.db
 Dataset Pathname: rag/berrag
 Presentation Format: rag2in
 Dataset Creation: Wed Apr 30 09:18:08 2014
 Charted by: Depth in Feet scaled 1:600

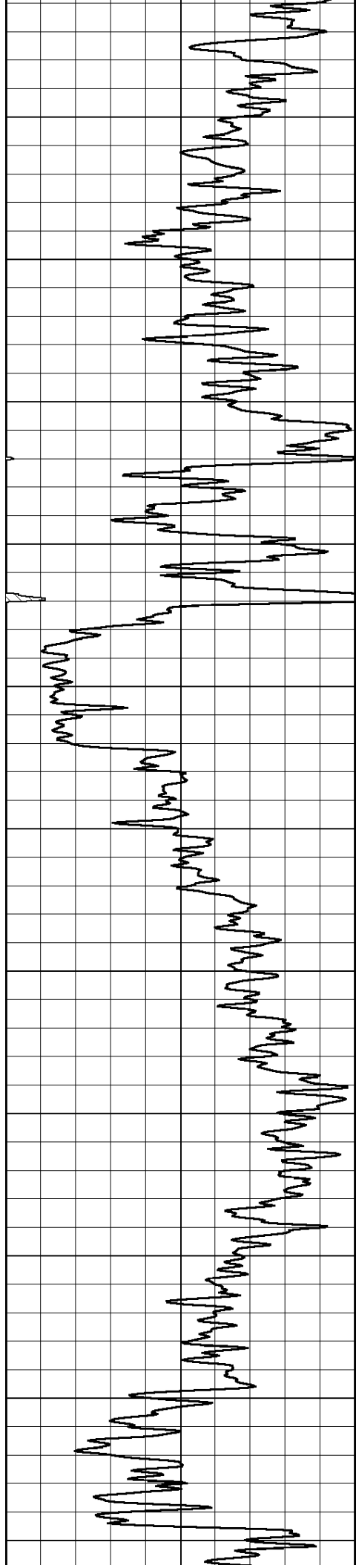
0 Gamma Ray 150

0.2 lgrd 2000

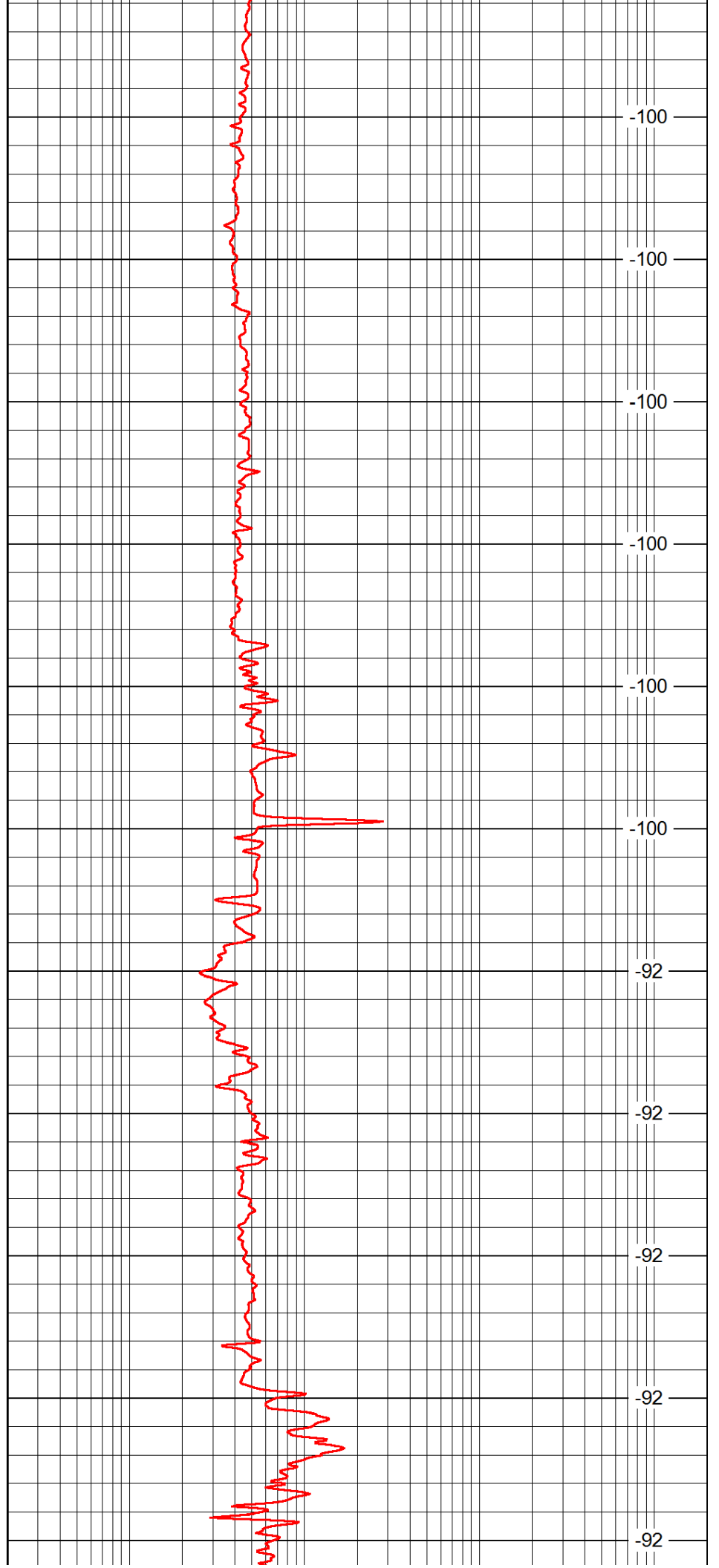
LSPD



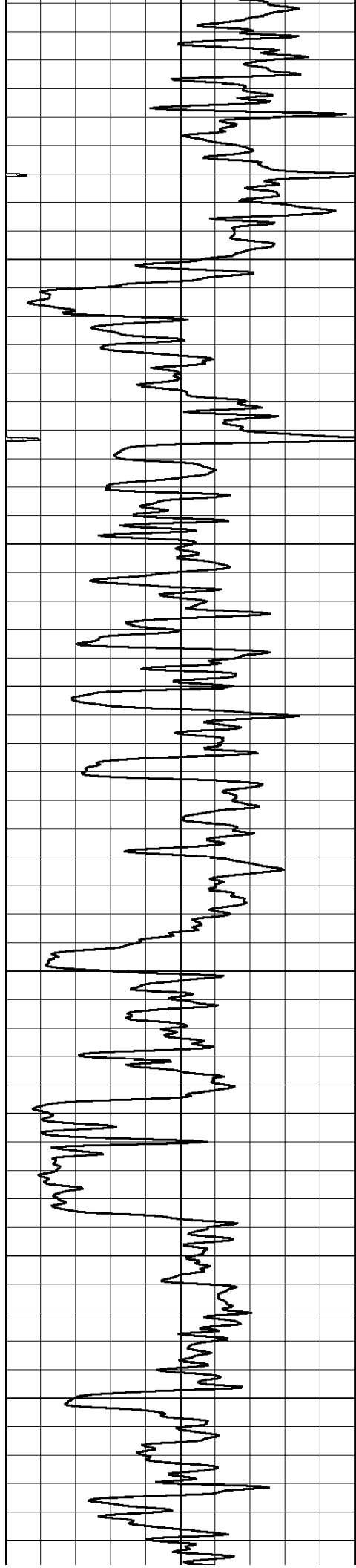




1400
1450
1500
1550
1600
1650
1700
1750
1800
1850
1900



-100
-100
-100
-100
-100
-100
-92
-92
-92
-92
-92



1950

2000

2050

2100

2150

2200

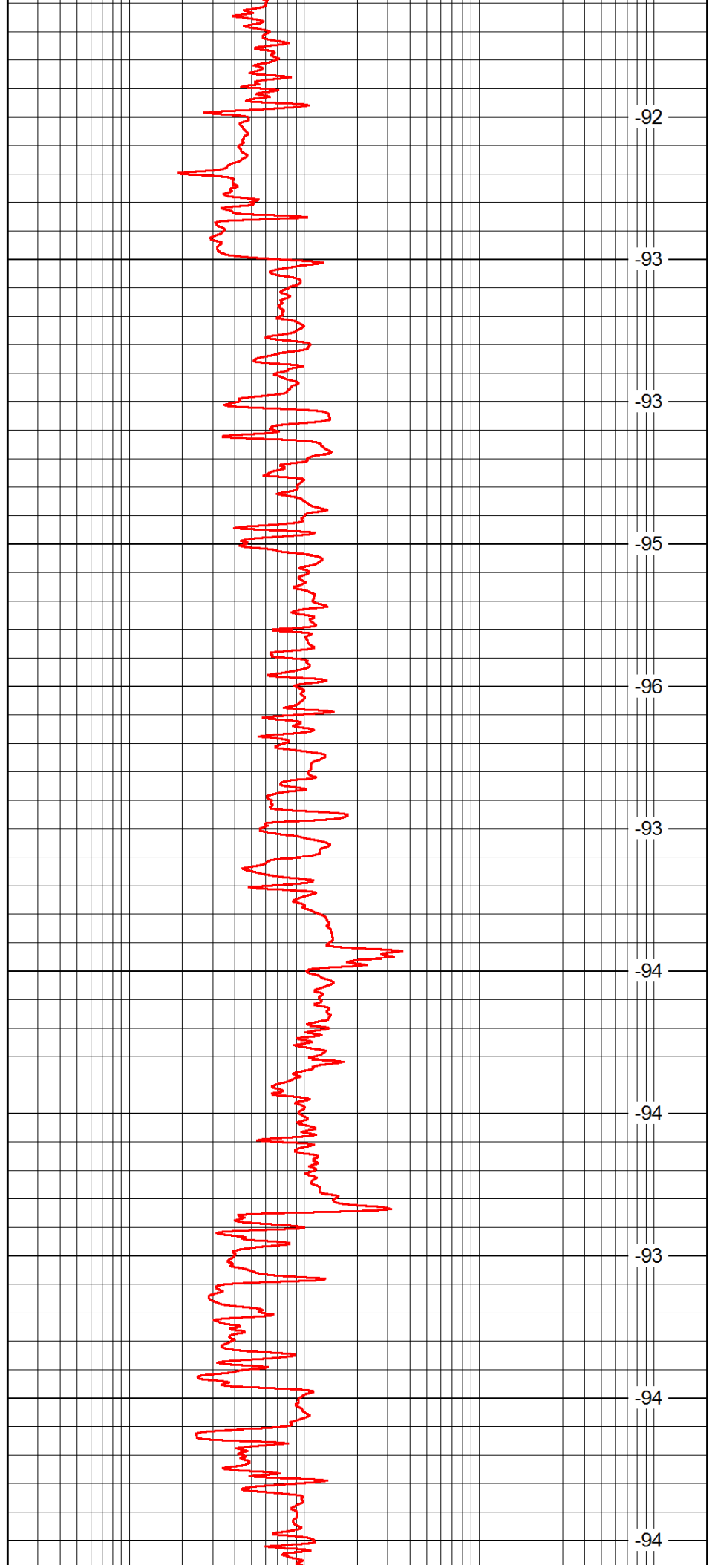
2250

2300

2350

2400

2450



-92

-93

-93

-95

-96

-93

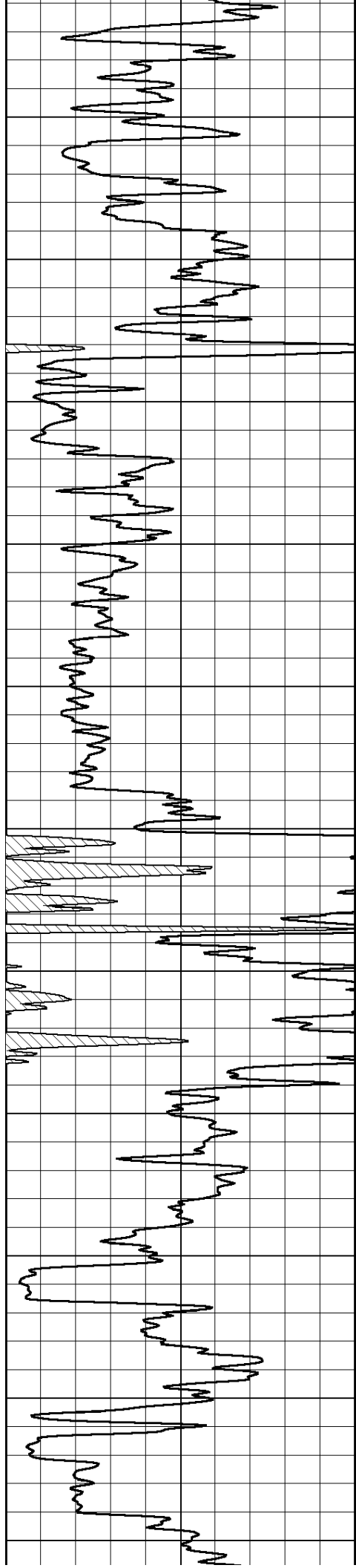
-94

-94

-93

-94

-94



2500

2550

2600

2650

2700

2750

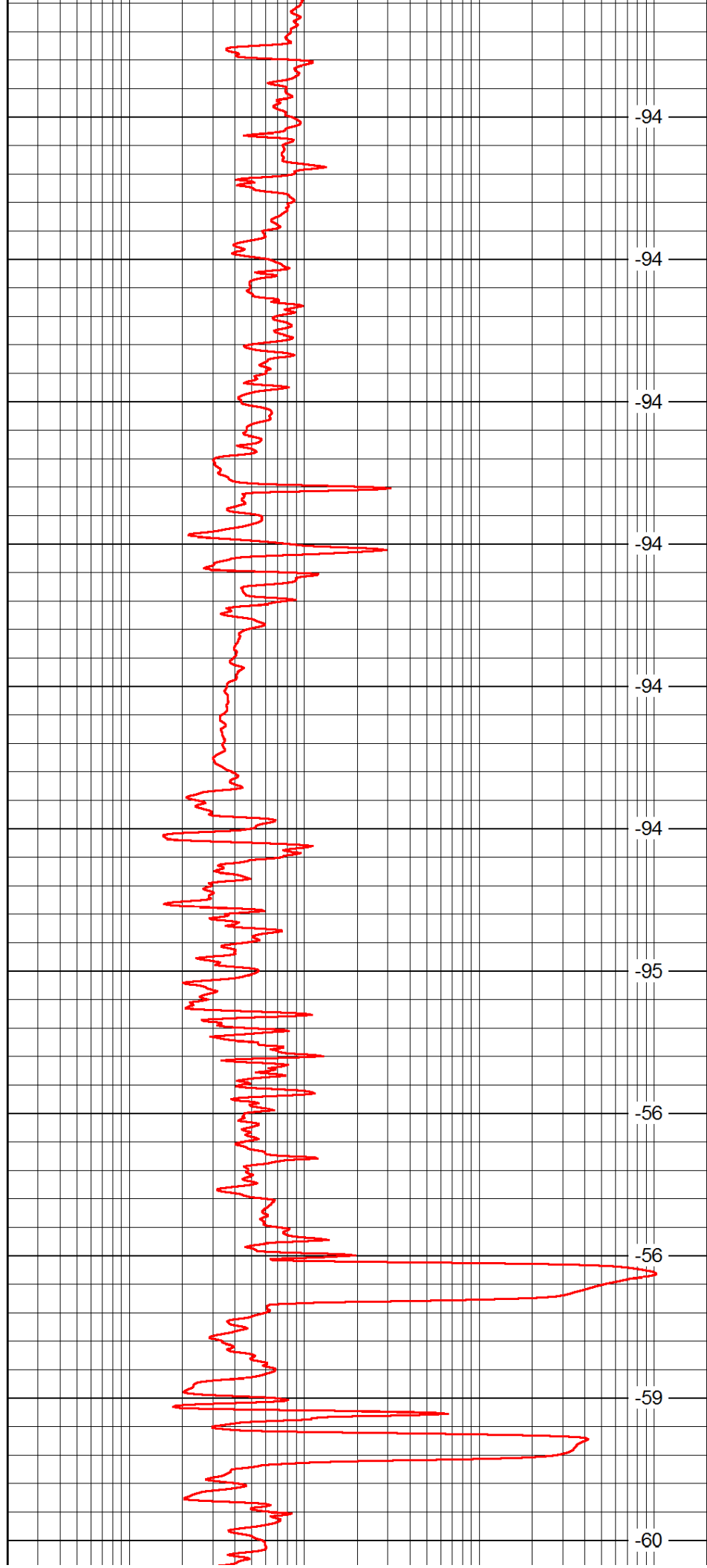
2800

2850

2900

2950

3000



-94

-94

-94

-94

-94

-94

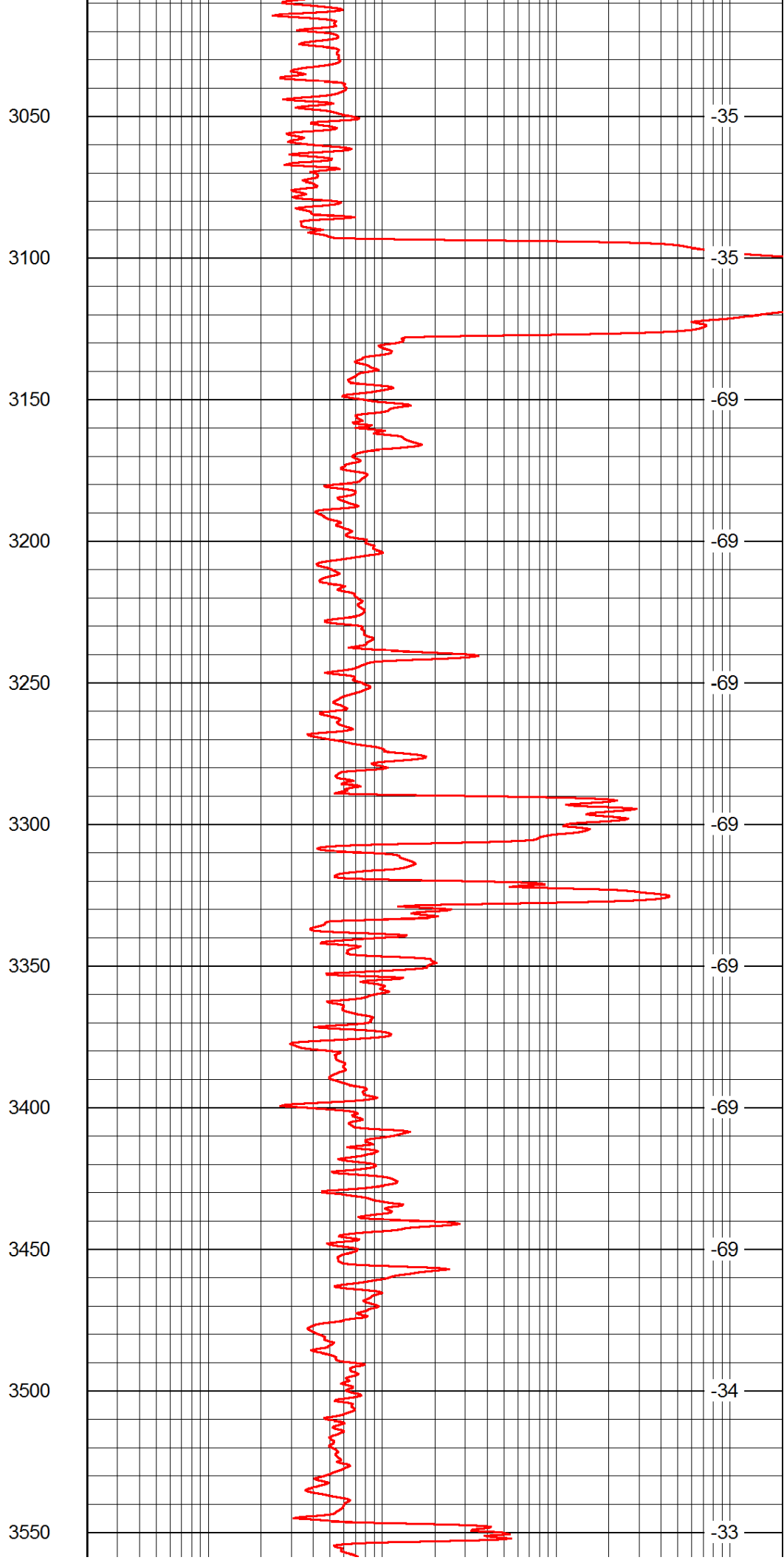
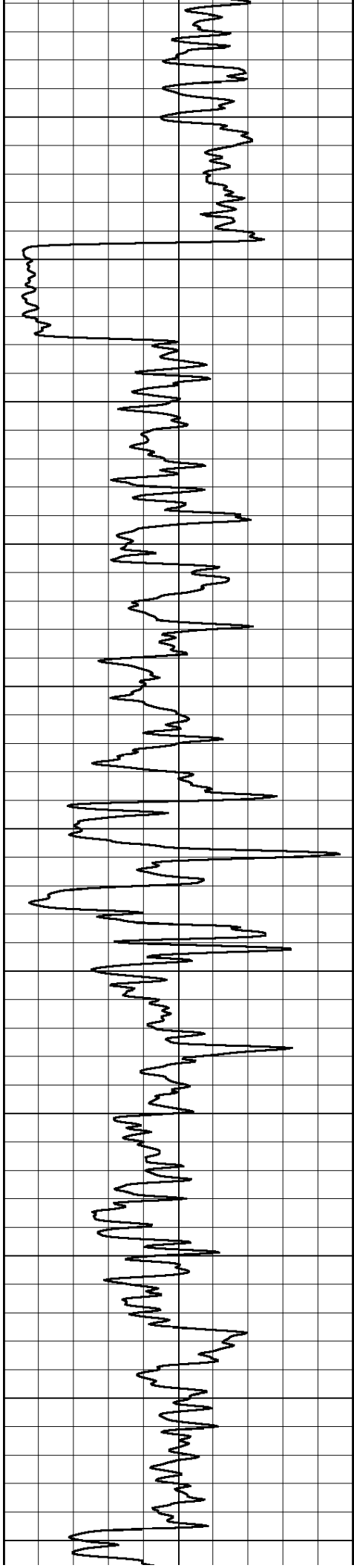
-95

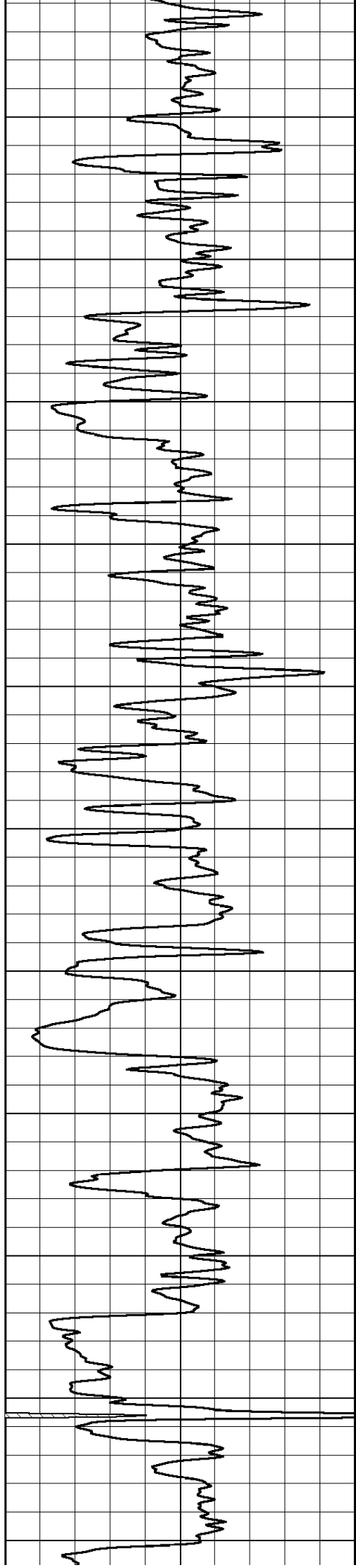
-56

-56

-59

-60





3600

3650

3700

3750

3800

3850

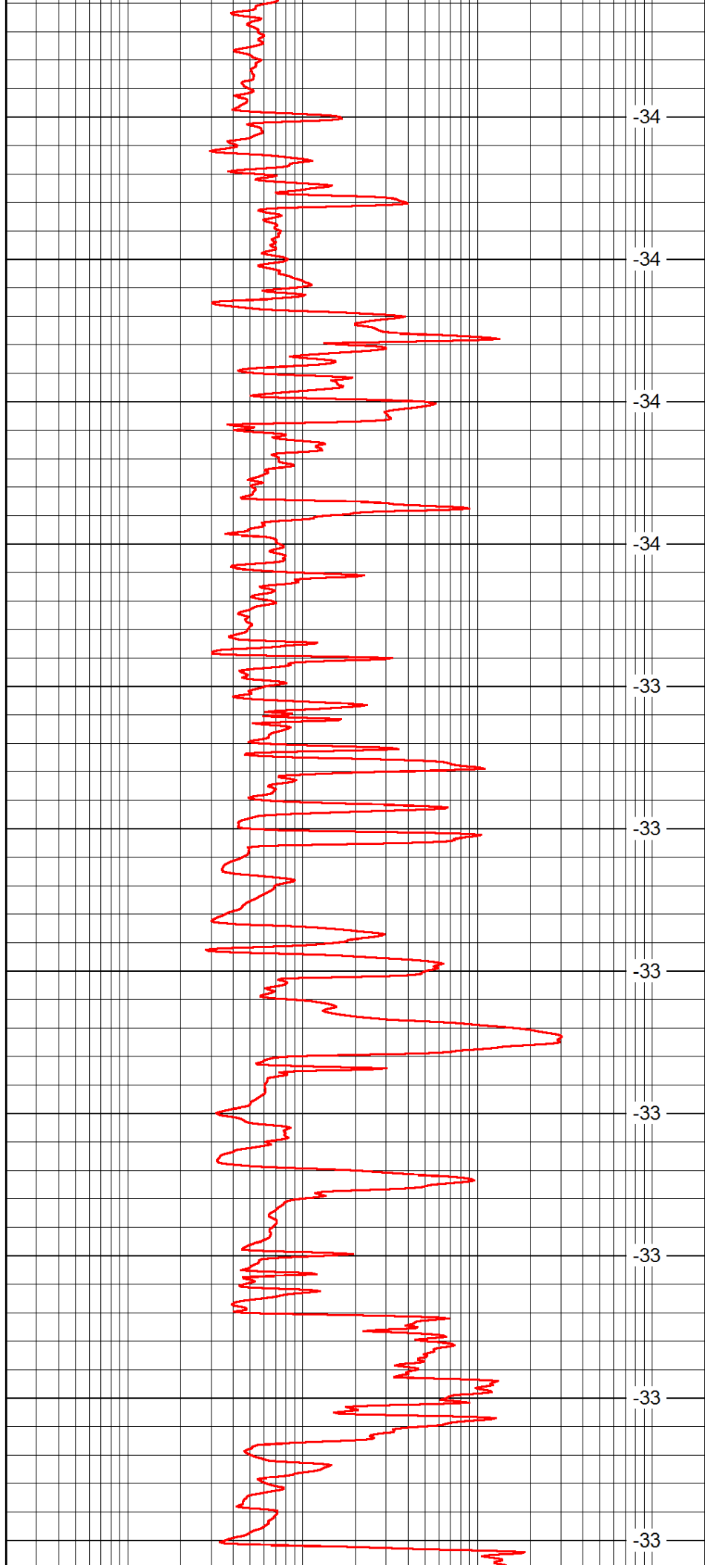
3900

3950

4000

4050

4100



-34

-34

-34

-34

-33

-33

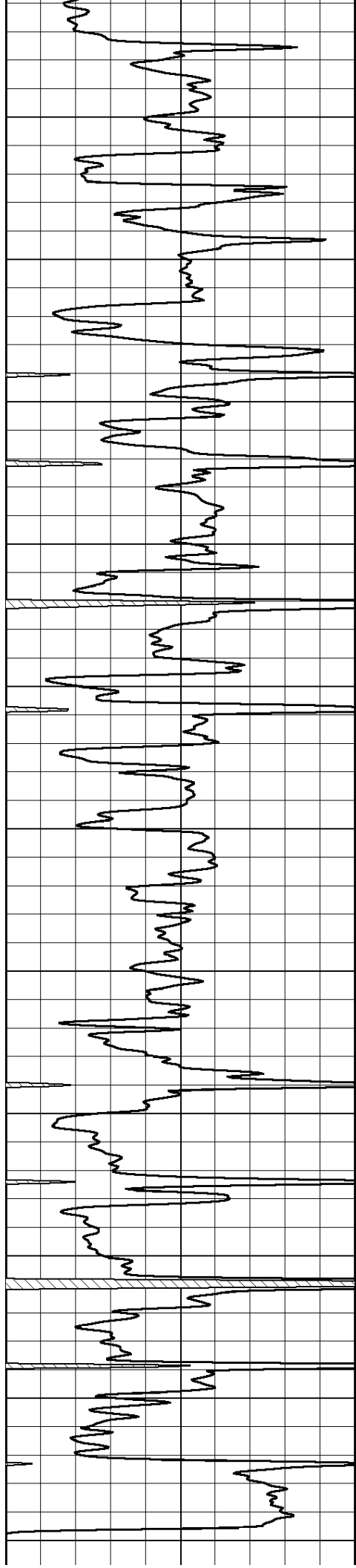
-33

-33

-33

-33

-33



4150

4200

4250

4300

4350

4400

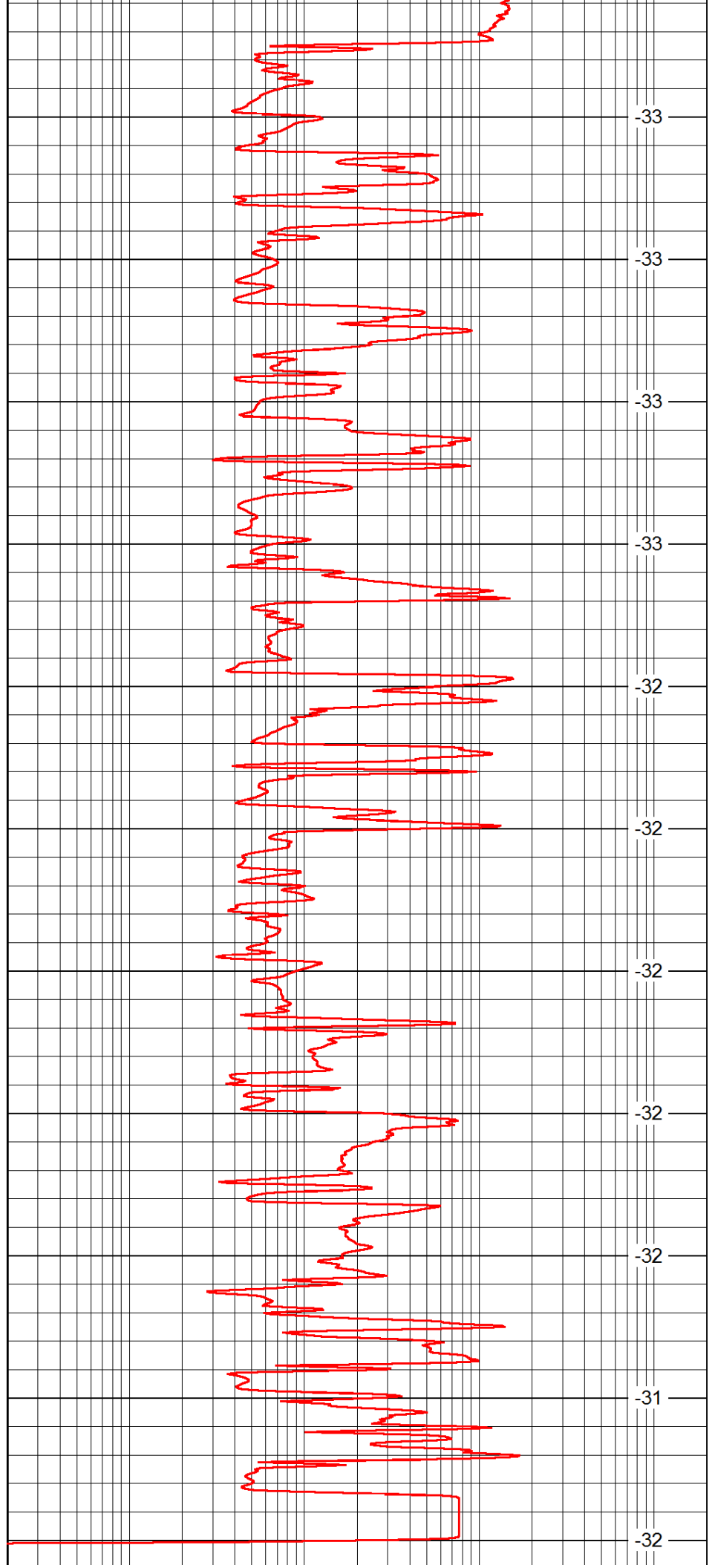
4450

4500

4550

4600

4650



-33

-33

-33

-33

-32

-32

-32

-32

-32

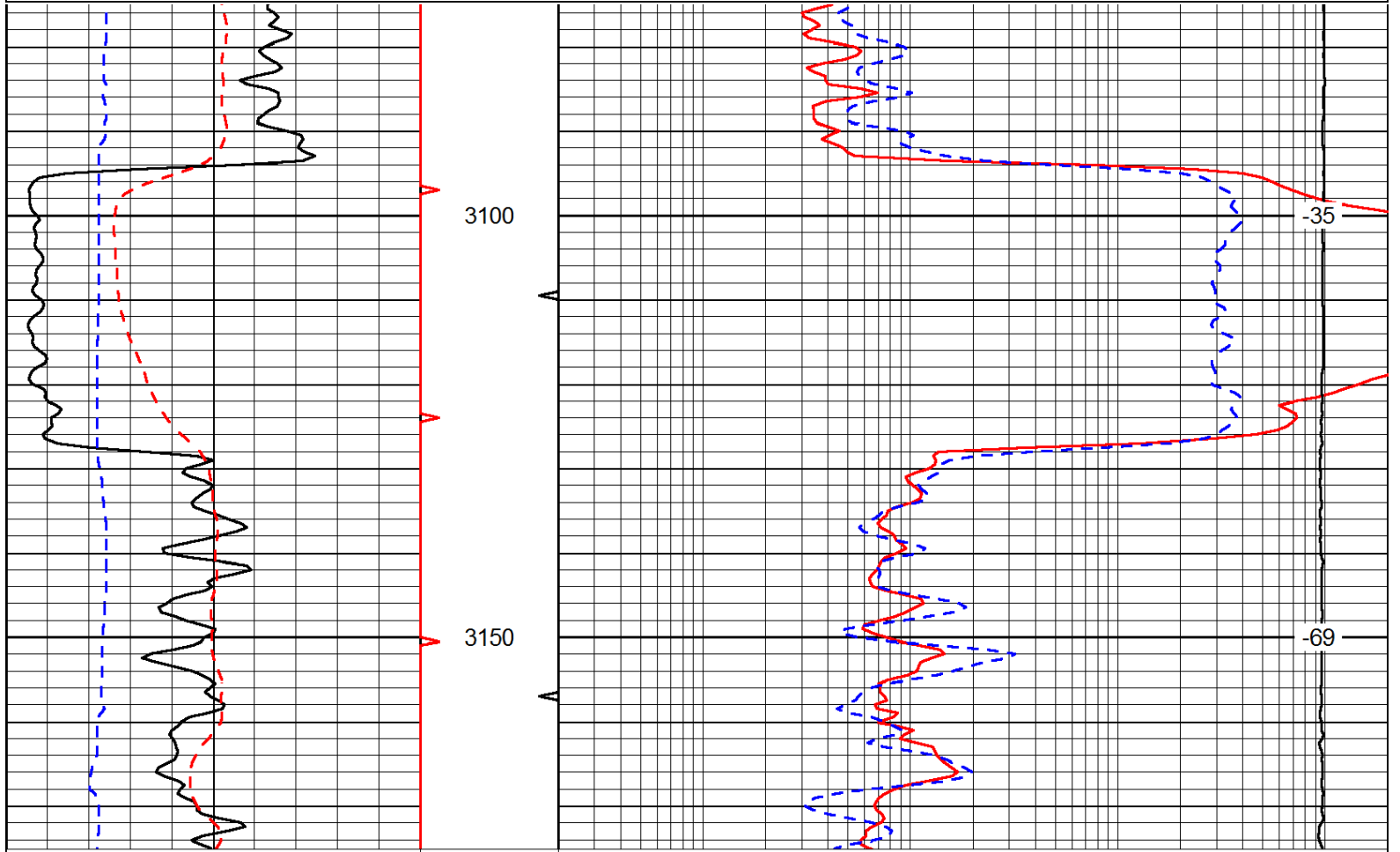
-31

-32

0	Gamma Ray	150	0.2	lgrd	2000
			LSPD		

Database File: c:\warrior\data\berexco_vada #2-17\berexco_vada_2-17hd.db
 Dataset Pathname: rag/berrag
 Presentation Format: rag
 Dataset Creation: Wed Apr 30 09:18:08 2014
 Charted by: Depth in Feet scaled 1:240

0	Gamma Ray	150	0.2	Long Guard	2000
6	Caliper (GAPI)	16	560	Neuton	2160
-200	SP (mV)	0	15000	Line Tension	0
			LSPD		



0	Gamma Ray	150	0.2	Long Guard	2000
6	Caliper (GAPI)	16	560	Neuton	2160
-200	SP (mV)	0	15000	Line Tension	0
			LSPD		

Database File: c:\warrior\data\berexco_vada #2-17\berexco_vada_2-17hd.db
 Dataset Pathname: rag/berrag
 Presentation Format: rag
 Dataset Creation: Wed Apr 30 09:18:08 2014
 Charted by: Depth in Feet scaled 1:240

0	Gamma Ray	150	0.2	Long Guard	2000
6	Caliper (GAPI)	16	560	Neuton	2160
-200	SP (mV)	0	15000	Line Tension	0
			LSPD		

