



Pioneer Energy Services

**Borehole Compensated
Sonic Log**

15-109-21,274-00-00

API No.

Company **Murfin Drilling Company, Inc.**
Well **Racette #2-12**
Field **Tom Tom**
County **Logan** State **Kansas**

Location **1320' FNL & 990' FEL**
Sec: **12** Twp: **13S** Rge: **33W**

Other Services
CNL/CDL
MEL/DIL

Elevation
K.B. 3044
D.F. 3033
G.L. 3033

Date	4/20/2014	
Run Number	Two	
Type Log	BHC Sonic	
Depth Driller	4770	
Depth Logger	4773	
Bottom Logged Interval	4762	
Top Logged Interval	200	
Type Fluid In Hole	Chemical	
Salinity, PPM CL	9000	
Density Level	9.4	
Level	Full	
Max. Rec. Temp. F	124	
Operating Rig Time	5 Hours	
Equipment -- Location	15 Days	
Recorded By	D Kerr	
Witnessed By	Wes Hansen	

Borehole Record				Casing Record			
Run No.	Bit	From	To	Size	Wgt.	From	To
1	12.25	00	225	8.625	24#	00	225
2	7.875	225	4770				

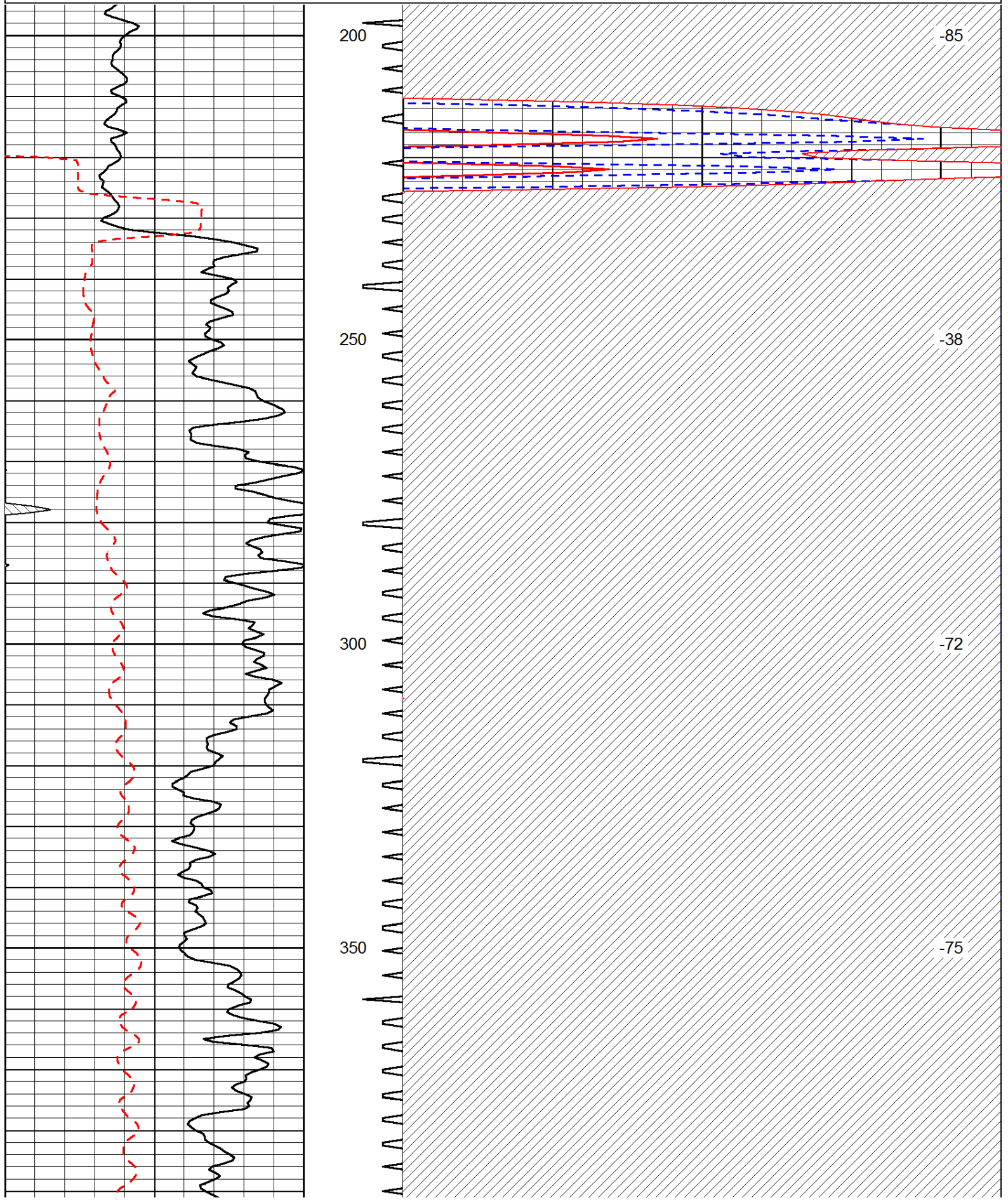
<<< Fold Here >>>

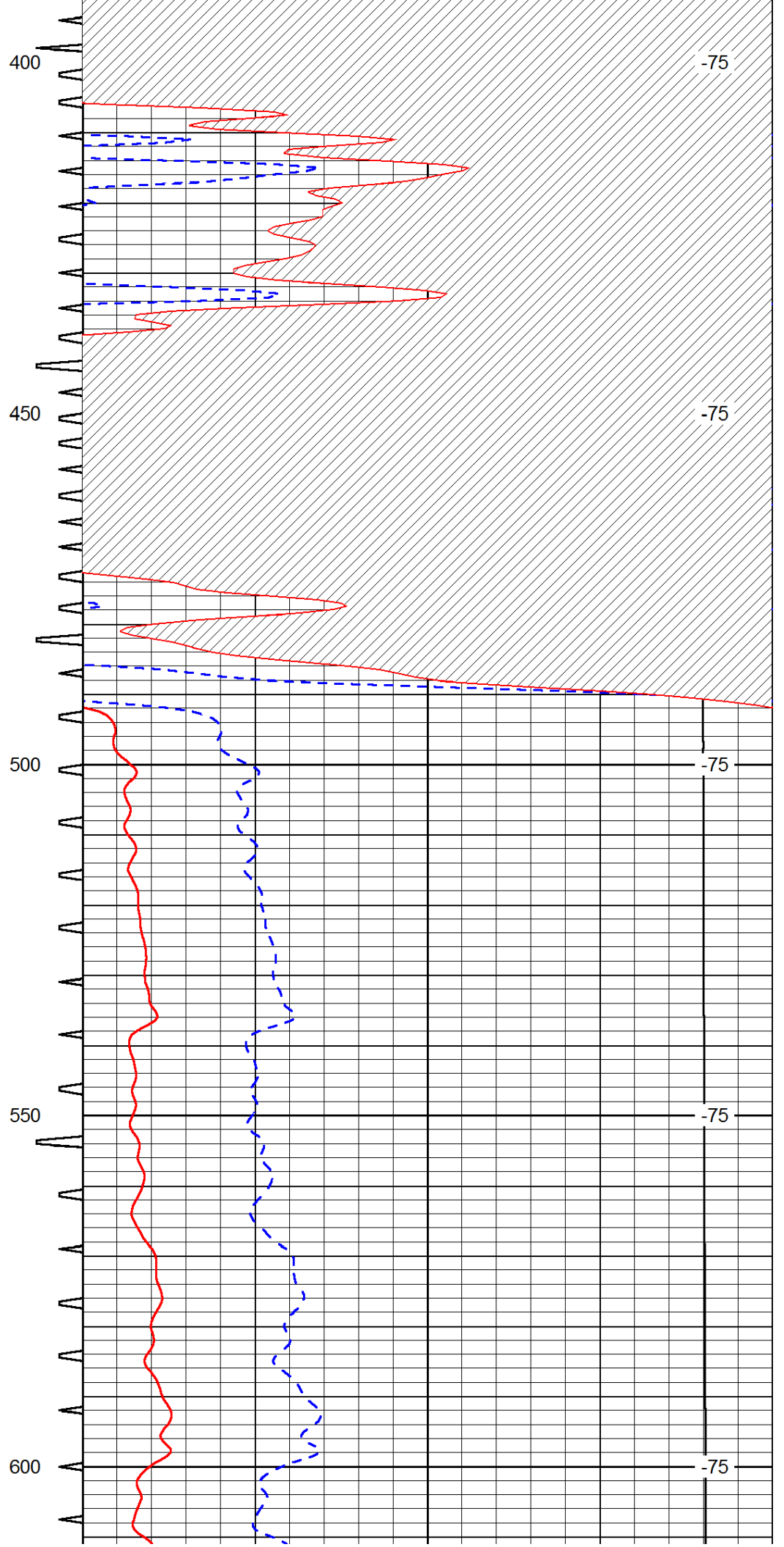
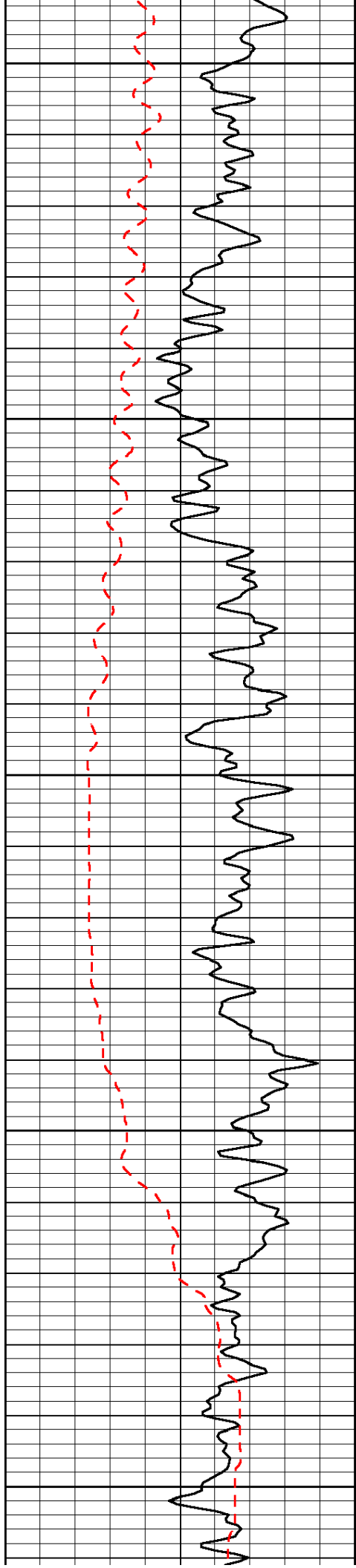
All interpretations are opinions based on inferences from electrical or other measurements and we cannot and do not guarantee the accuracy or correctness of any interpretation, and we shall not, except in the case of gross or willful negligence on our part, be liable or responsible for any loss, costs, damages, or expenses incurred or sustained by anyone resulting from any interpretation made by any of our officers, agents or employees. These interpretations are also subject to our general terms and conditions set out in our current Price Schedule.

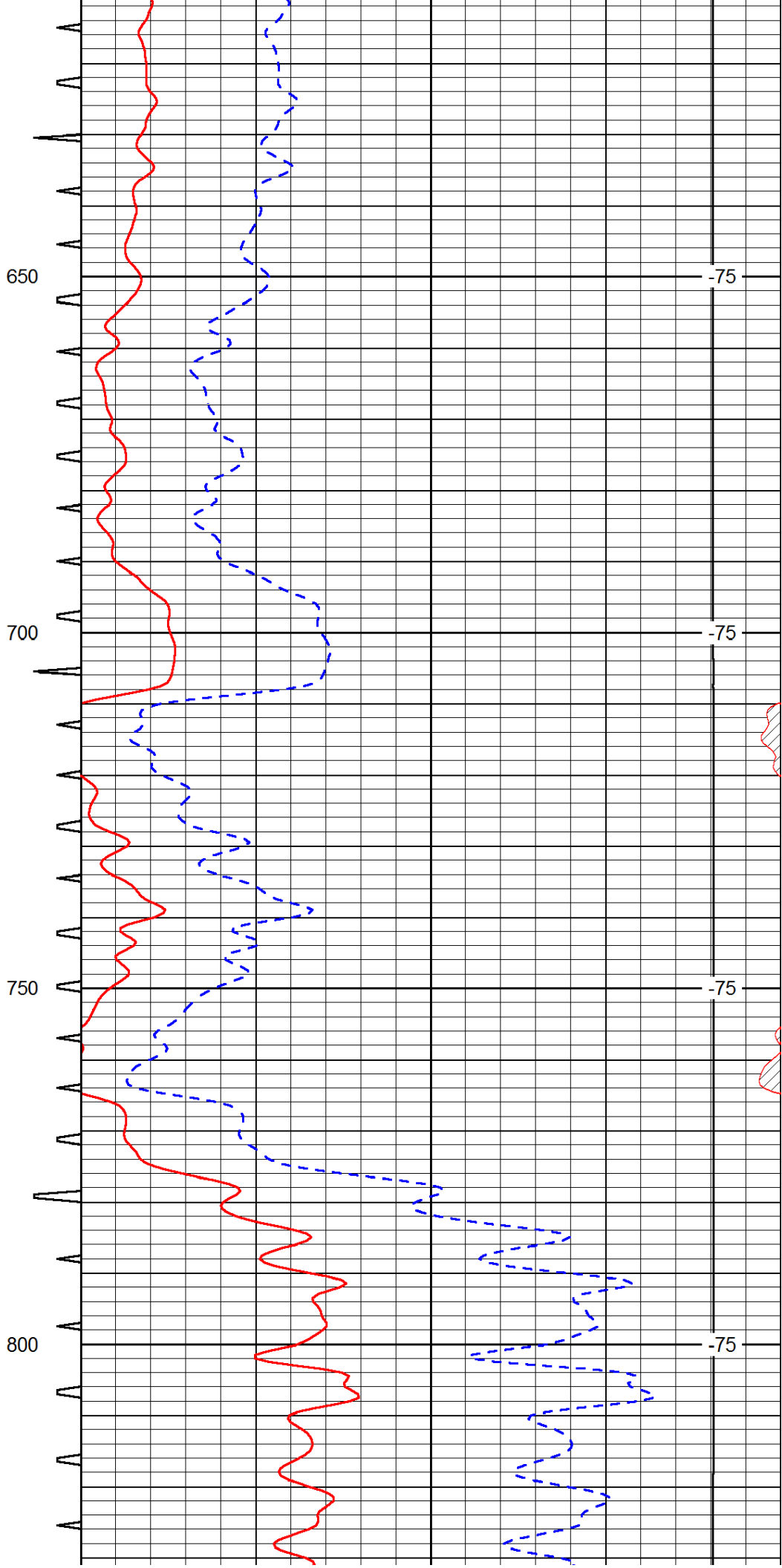
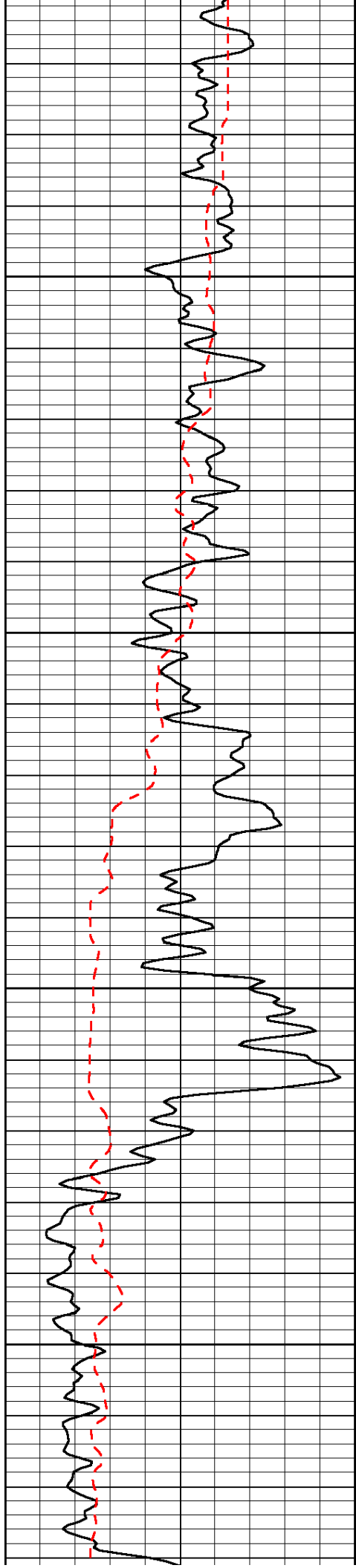
Comments

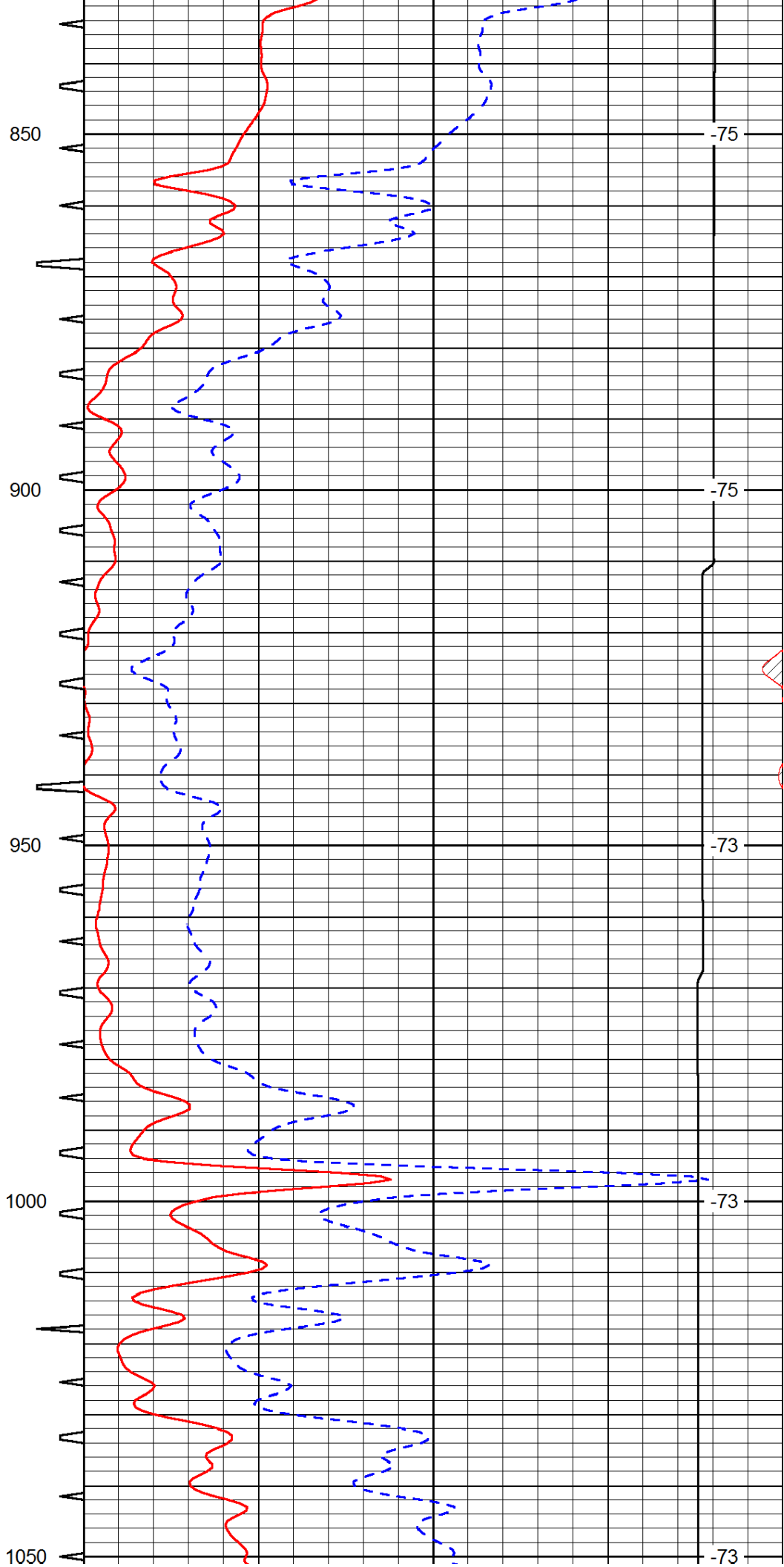
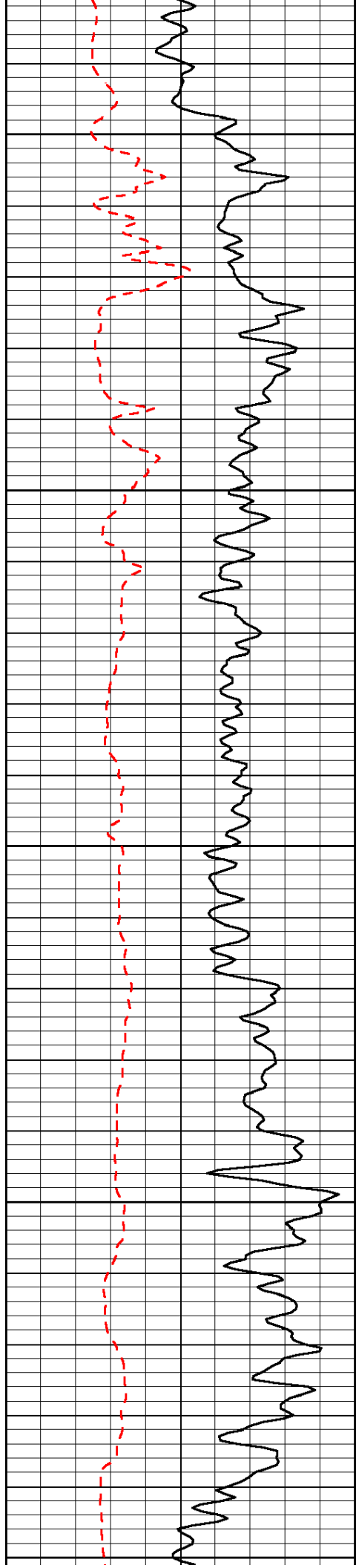
Thank you for using Pioneer Energy Services
www.pioneerenergy.com
 785 625 3858
 Oakley KS, South to Seneca RD,
 4 West to 400 RD, 1 1/3 South, West Into

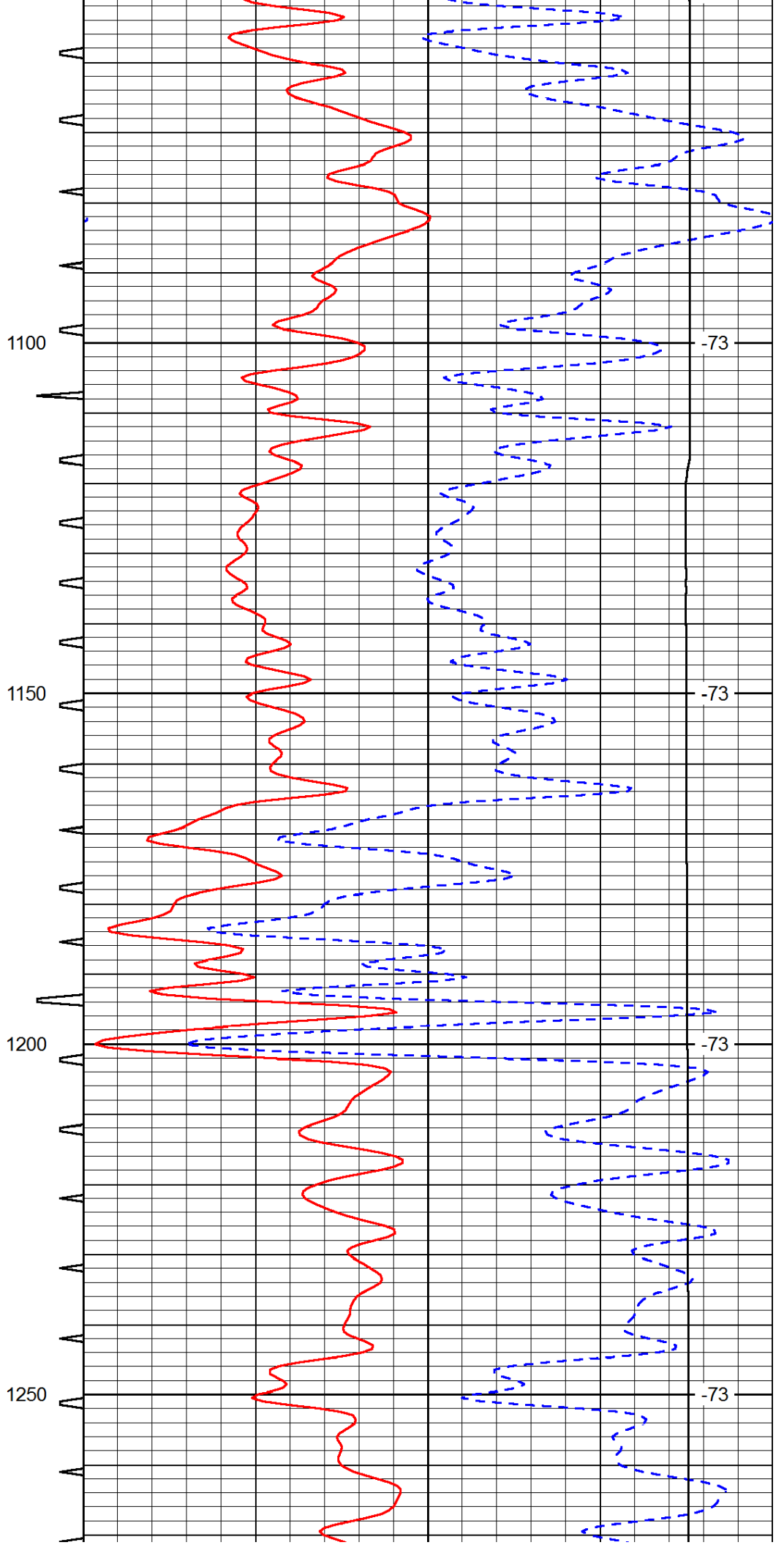
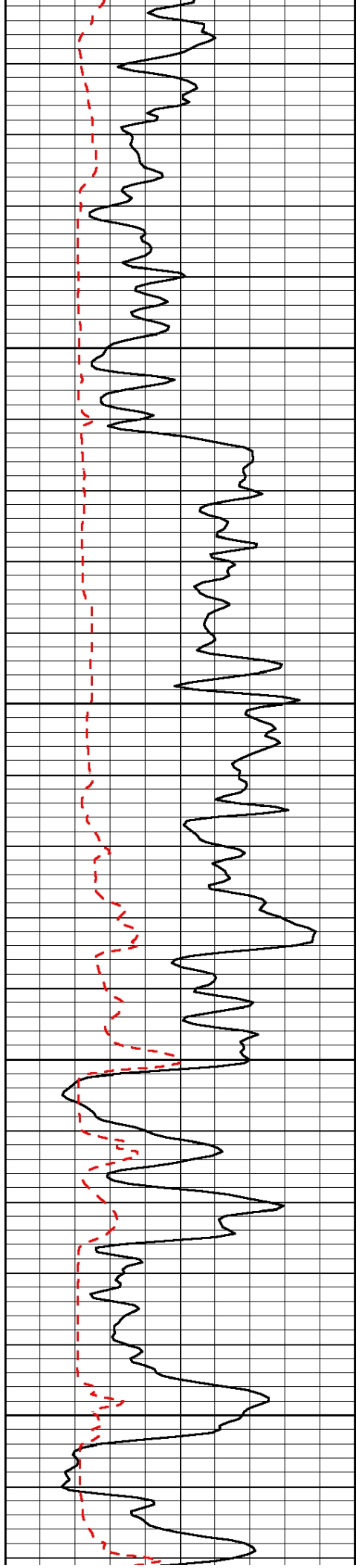
0	Gamma Ray	150	Sonic Int	140	Delta Time (usec/ft)	40
150	Gamma Ray	300	5	0	SPOR	-10
6	Caliper (GAPI)	16		15000	LTEN (lb)	0
						LSPD

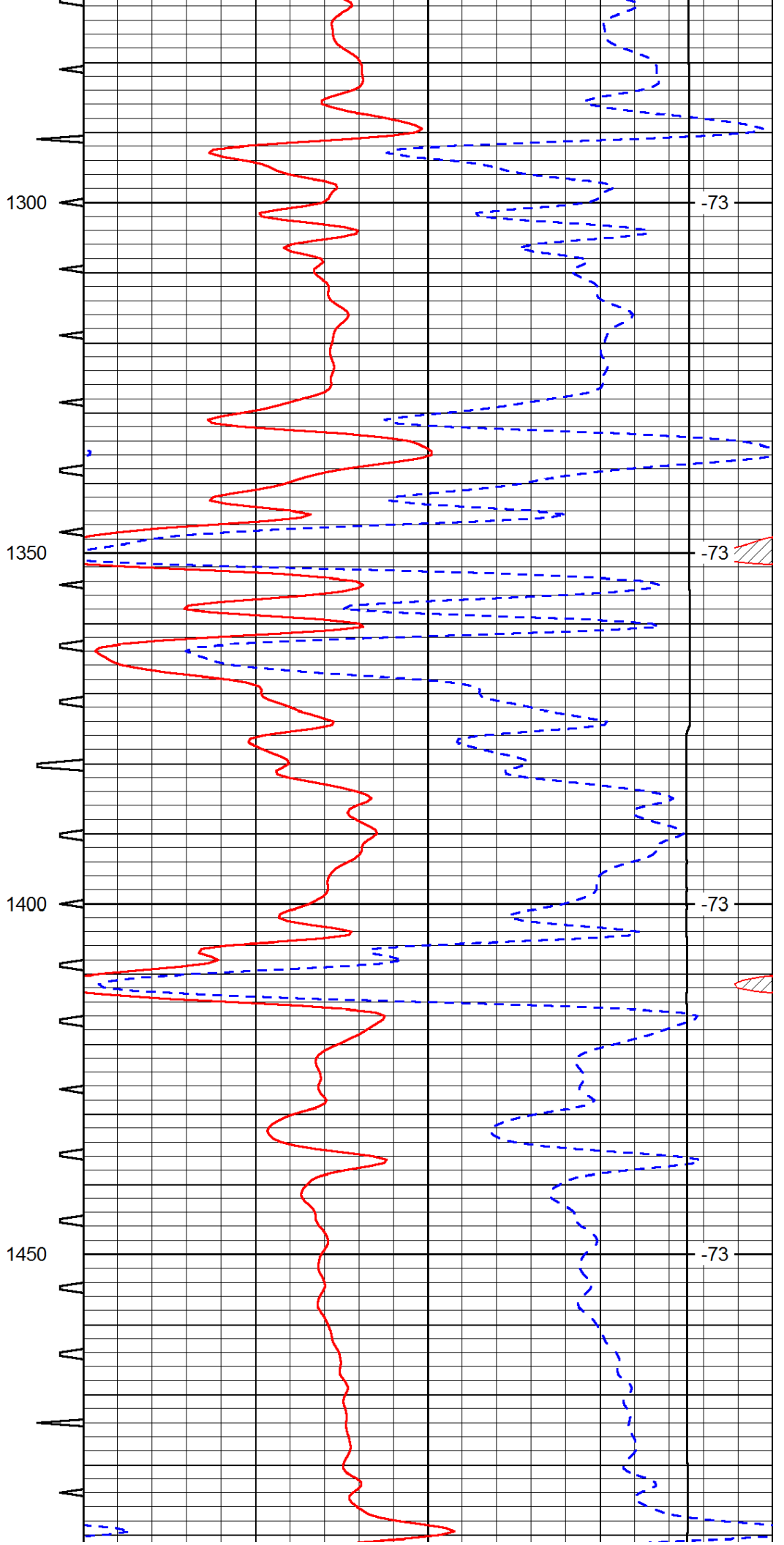
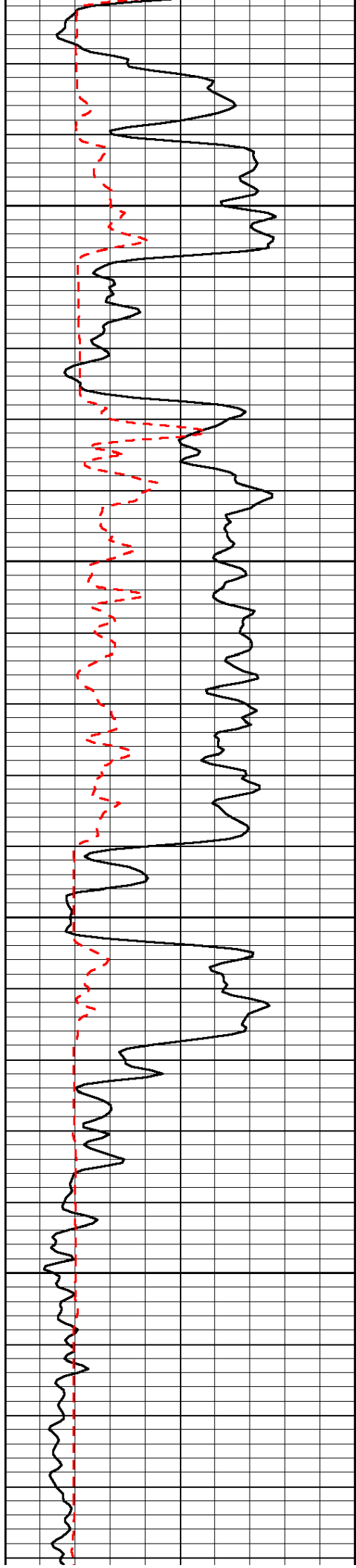


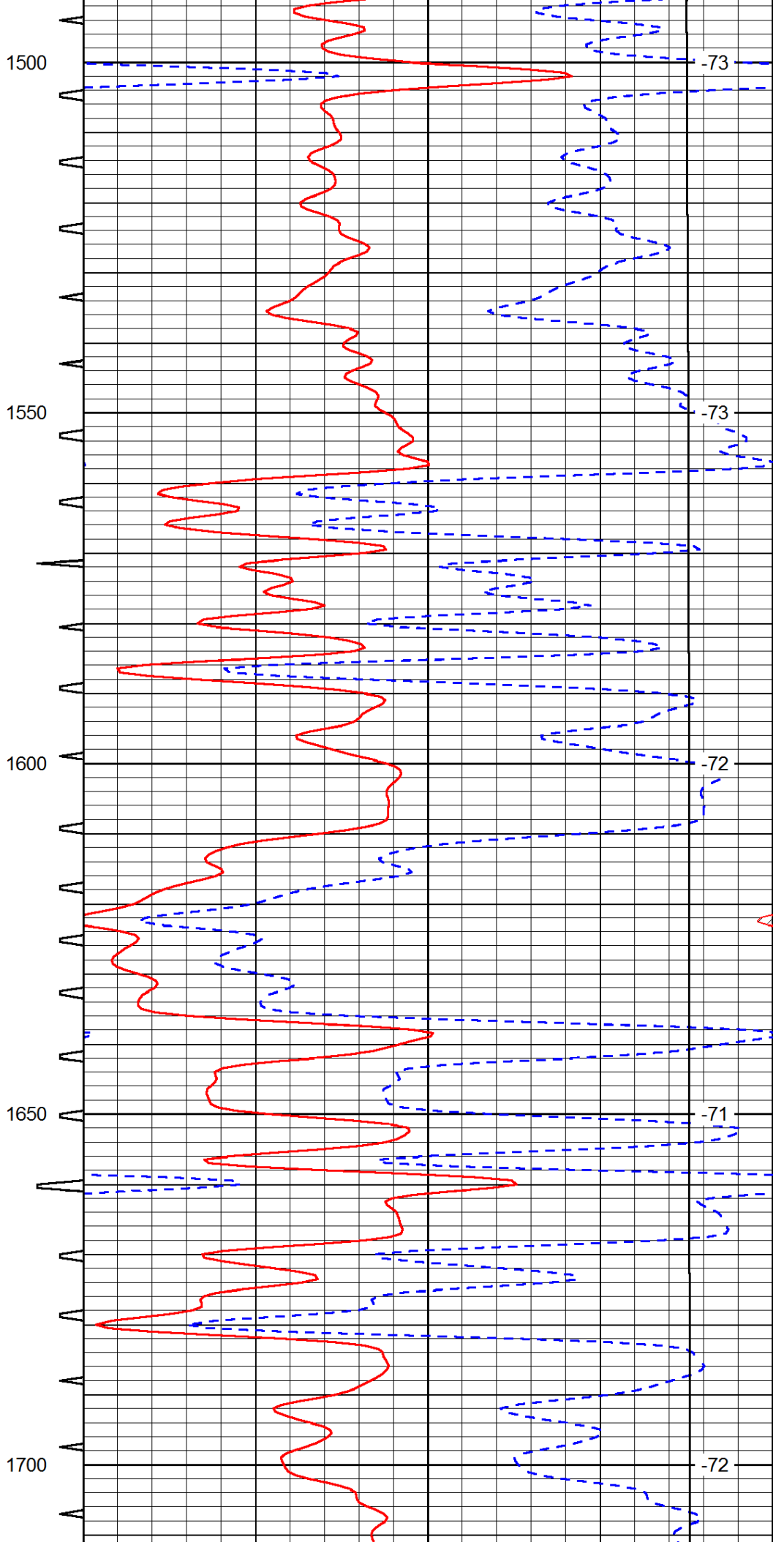
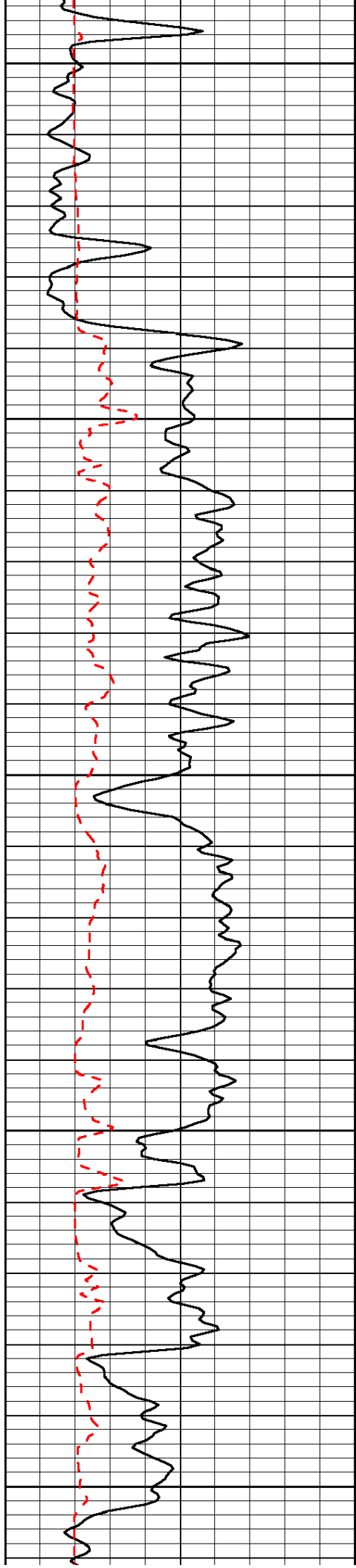


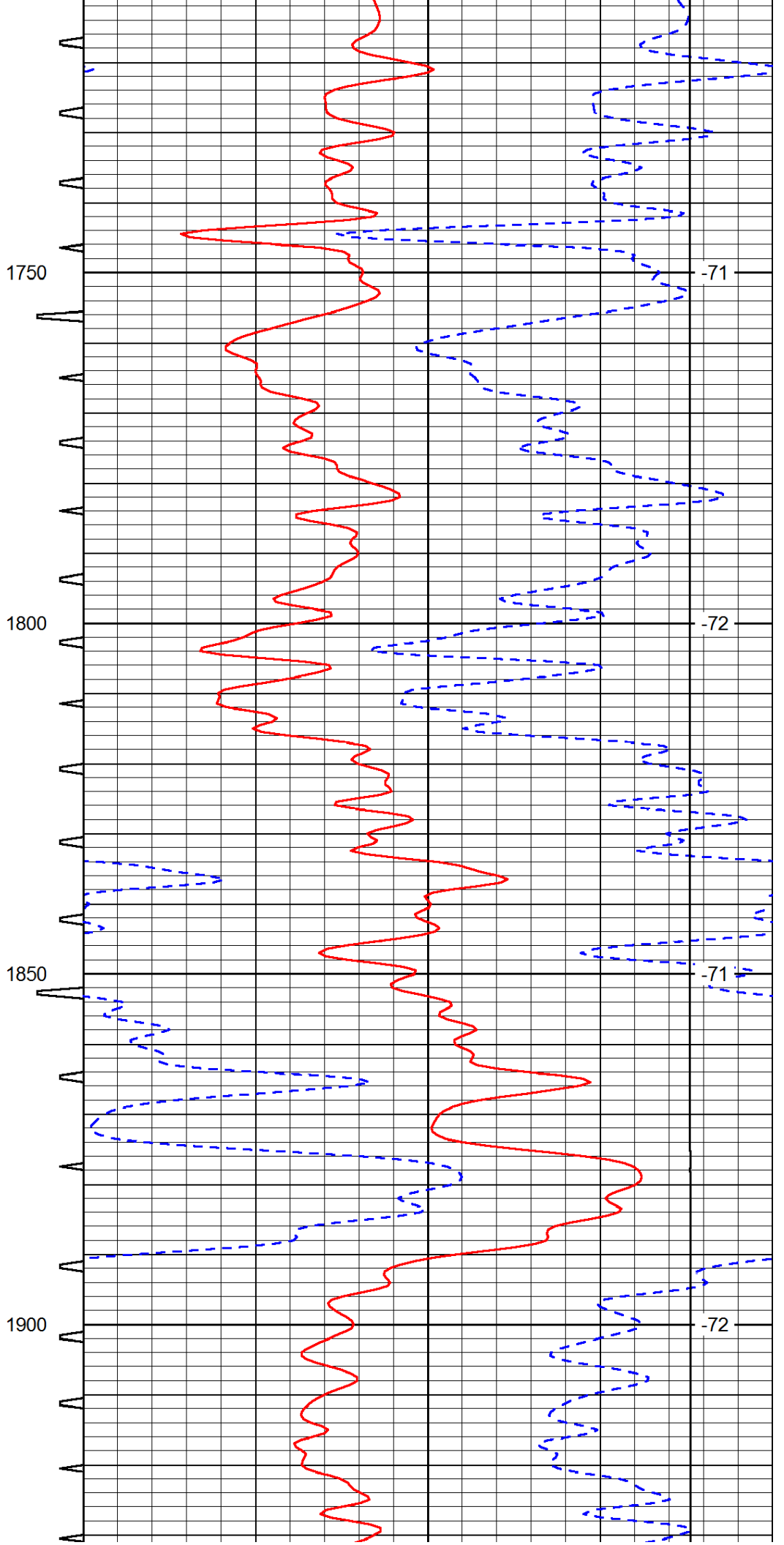
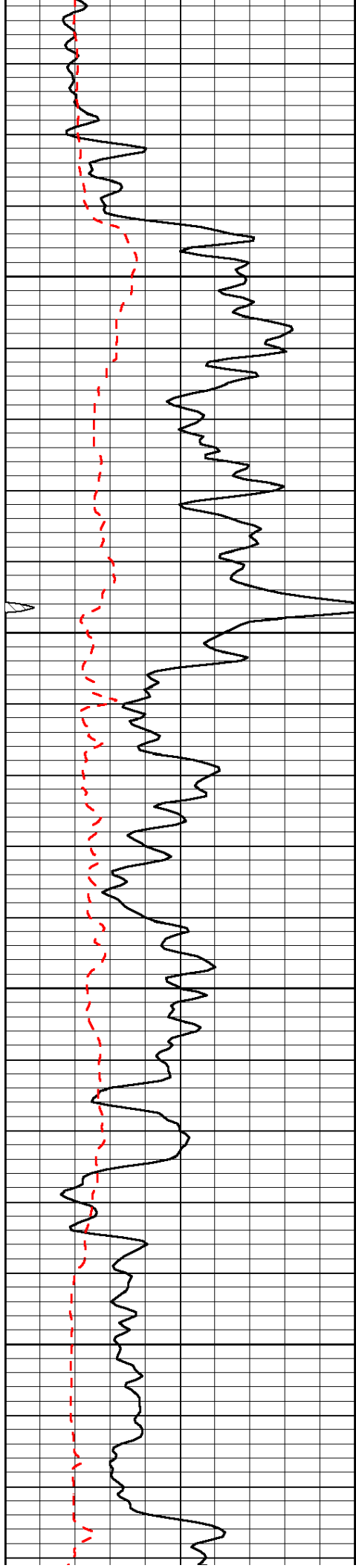


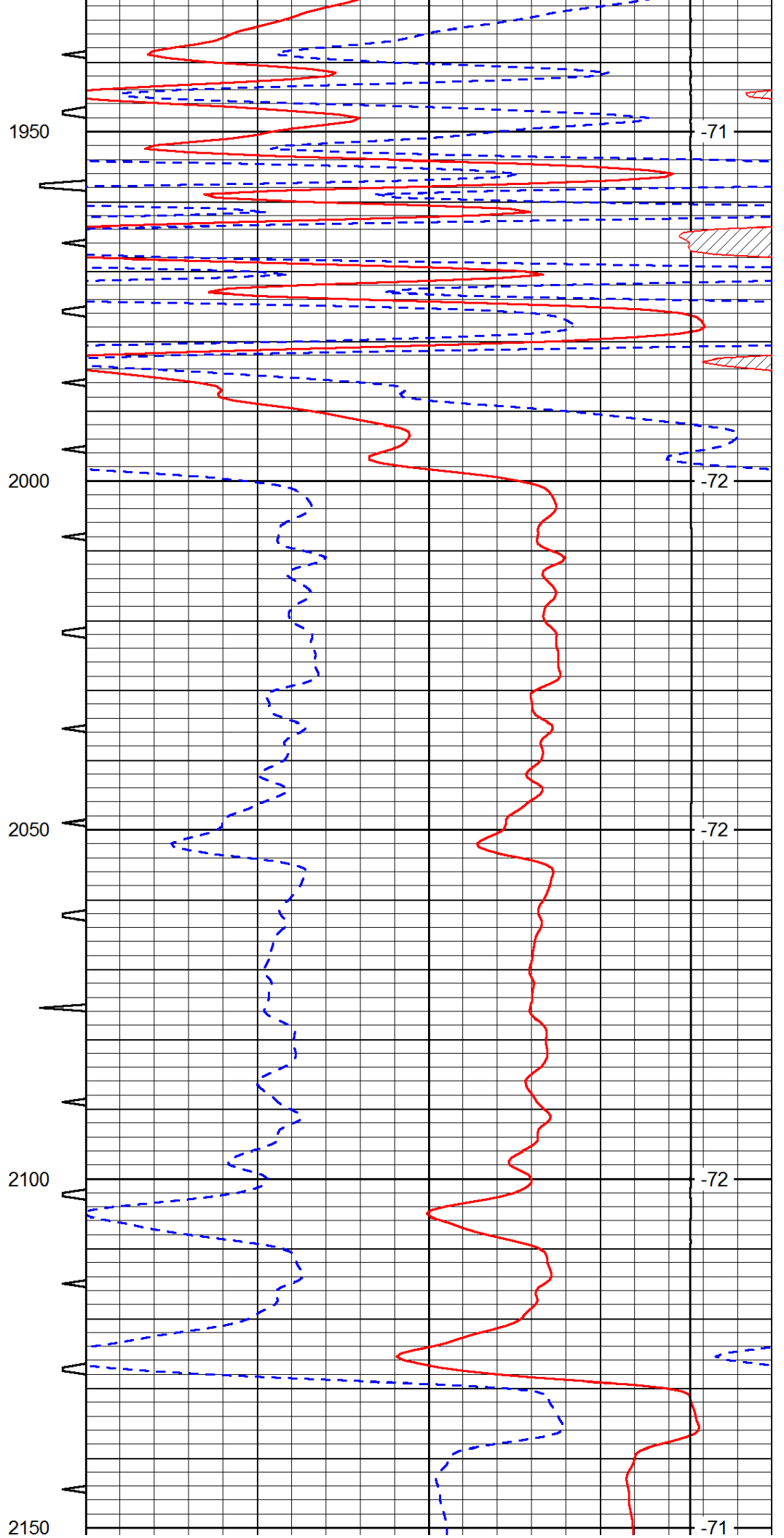
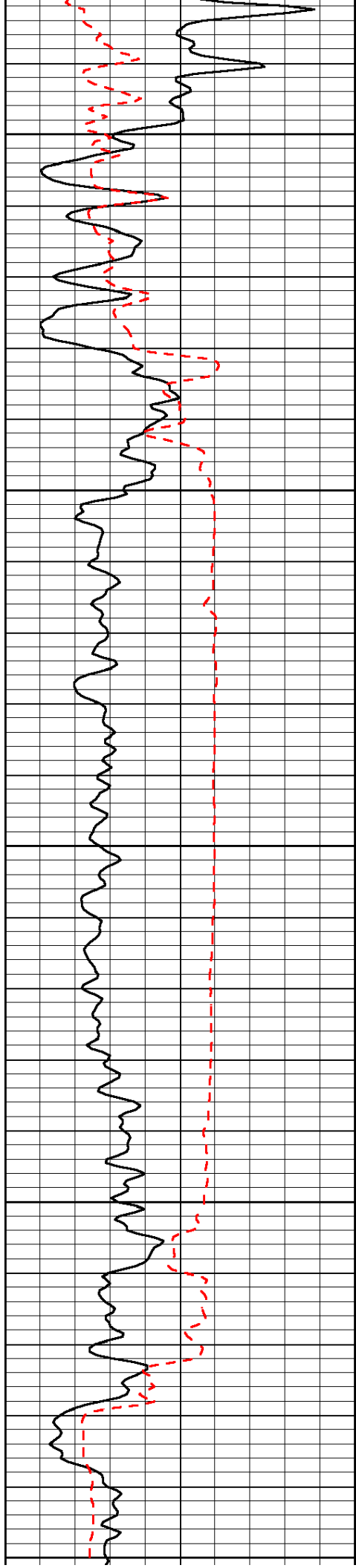


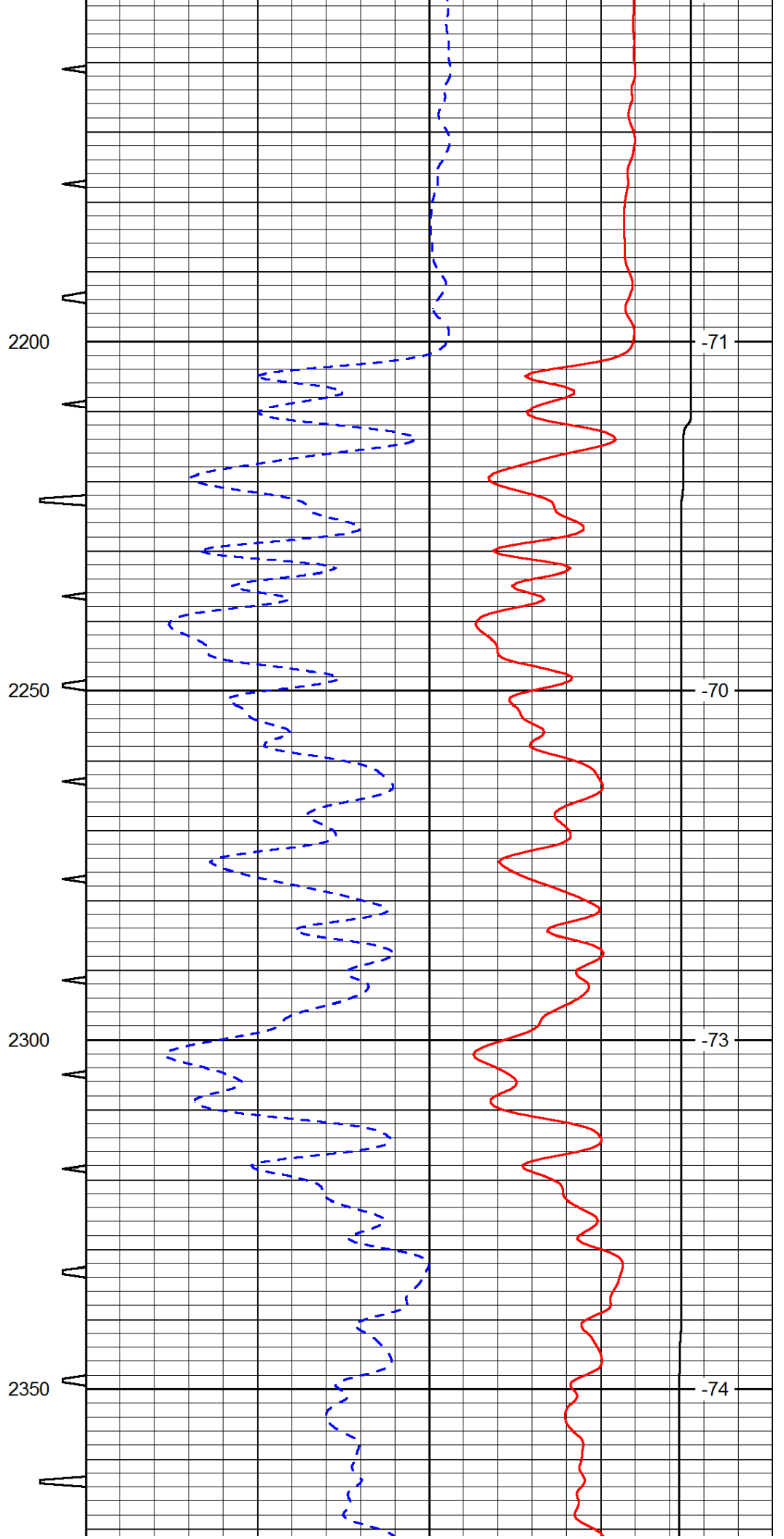
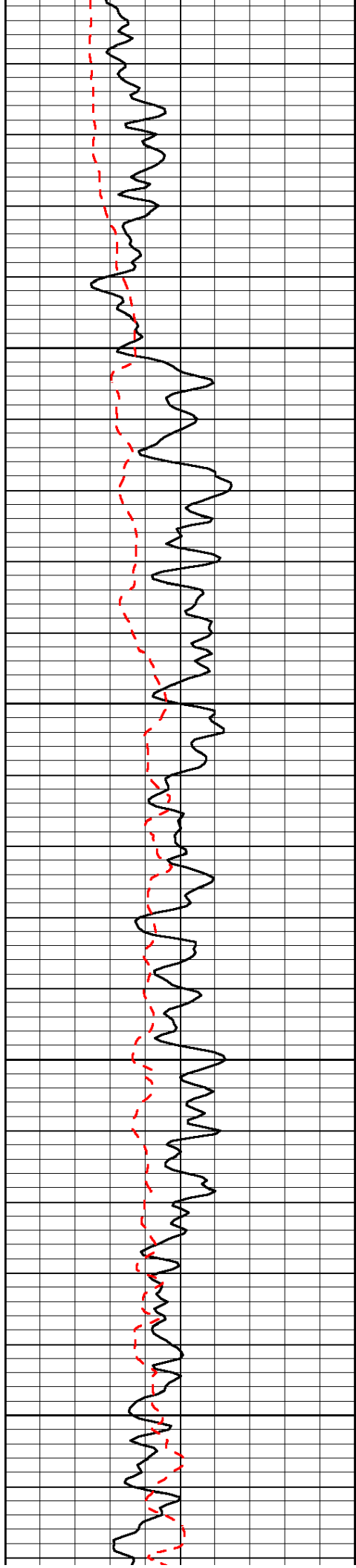


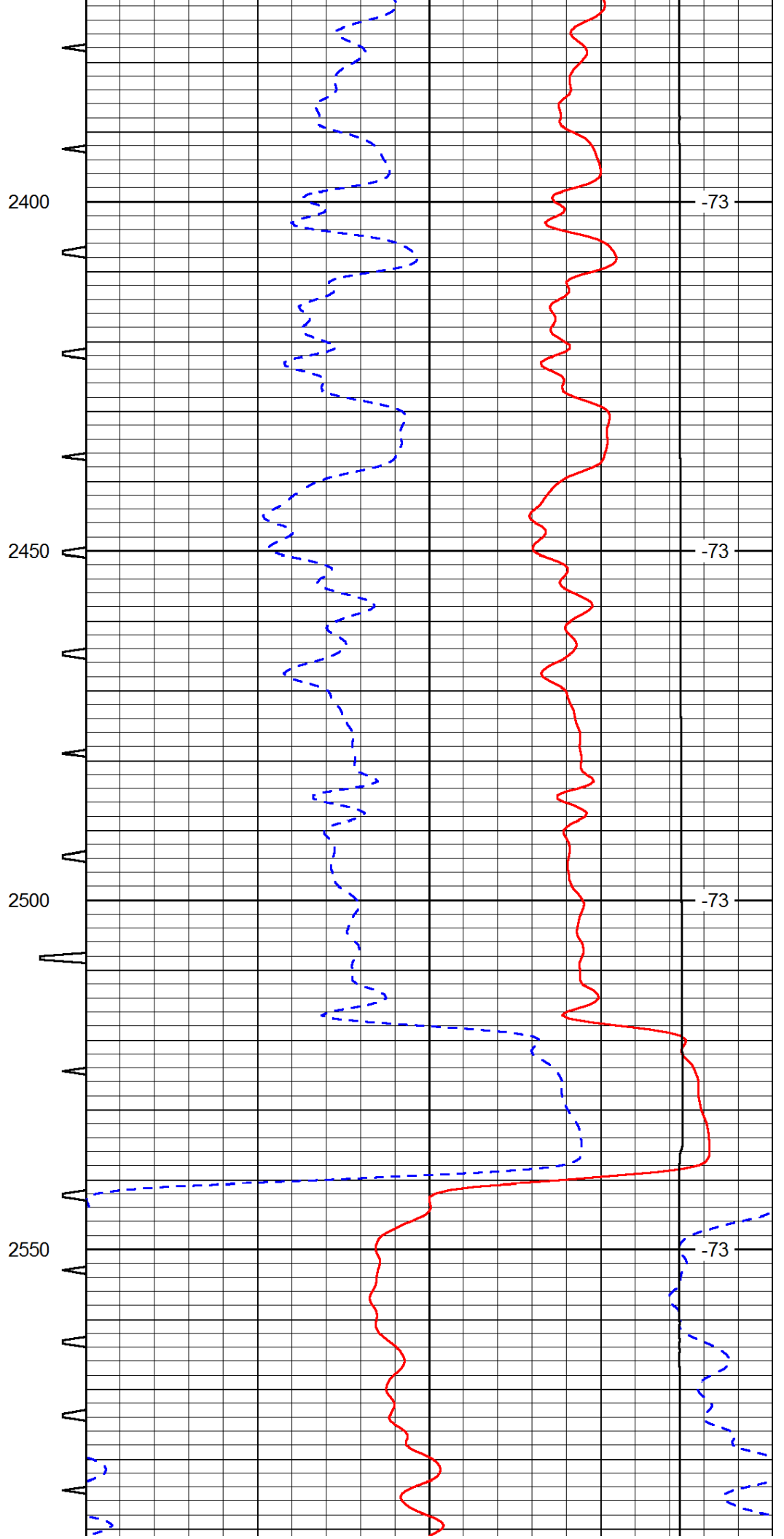
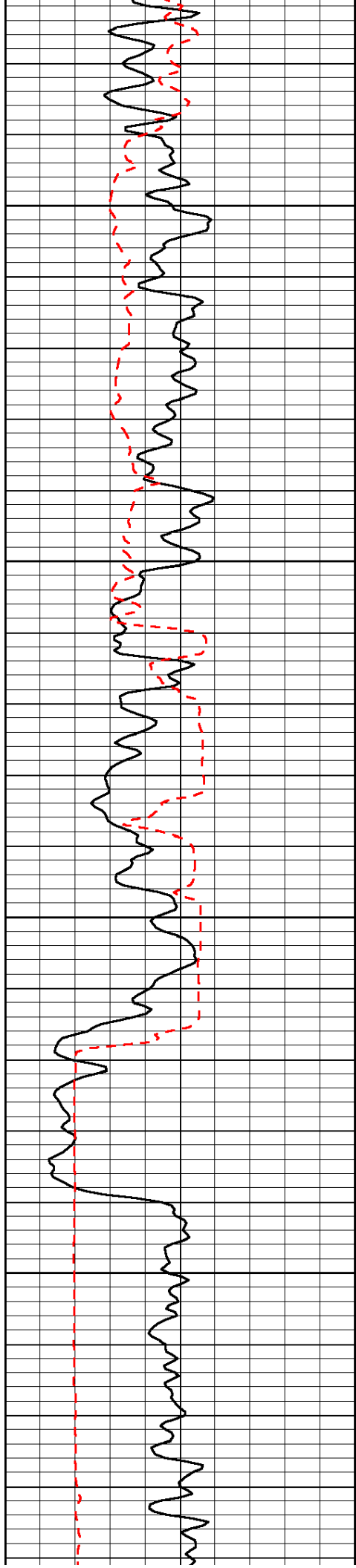


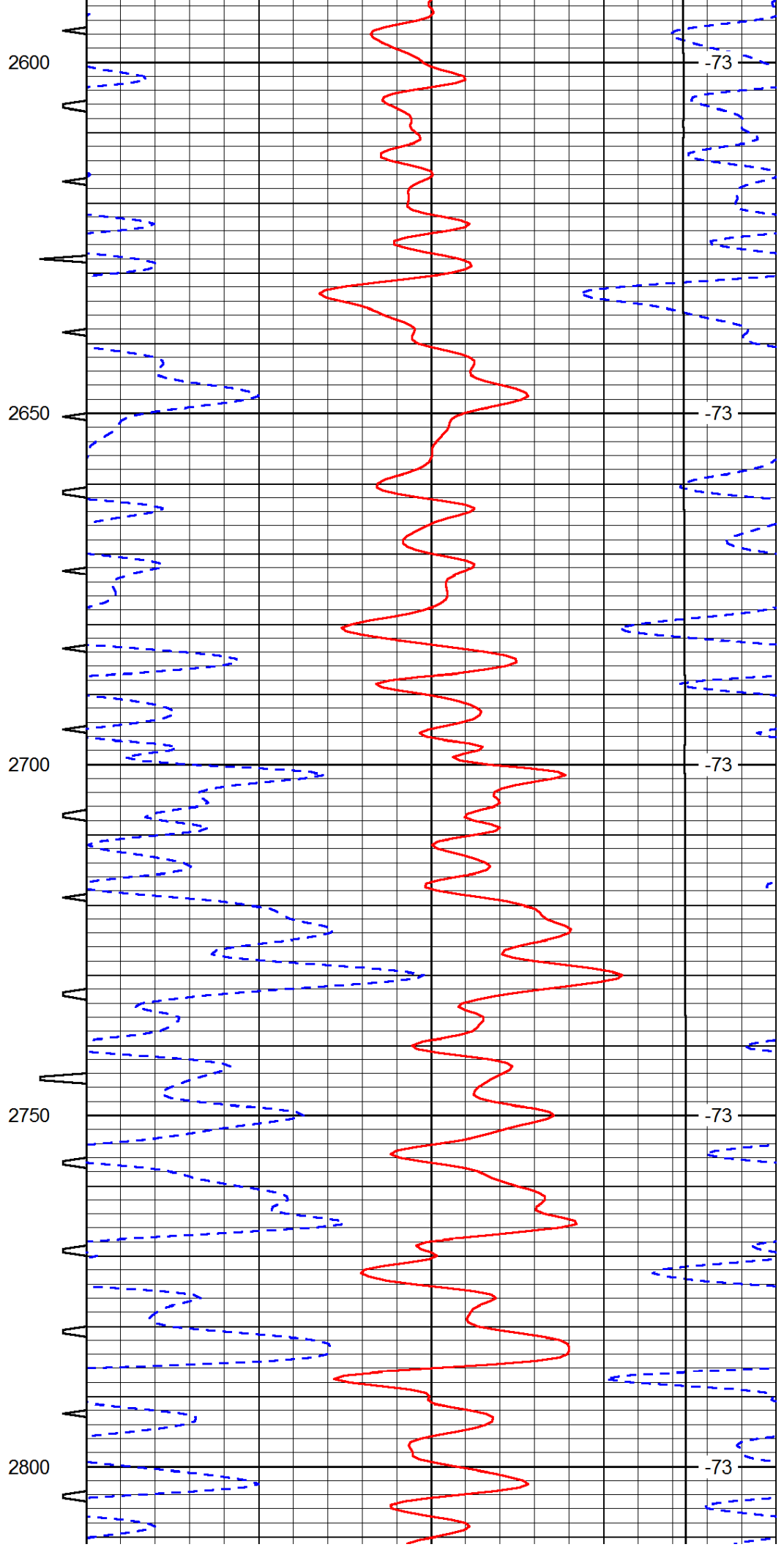
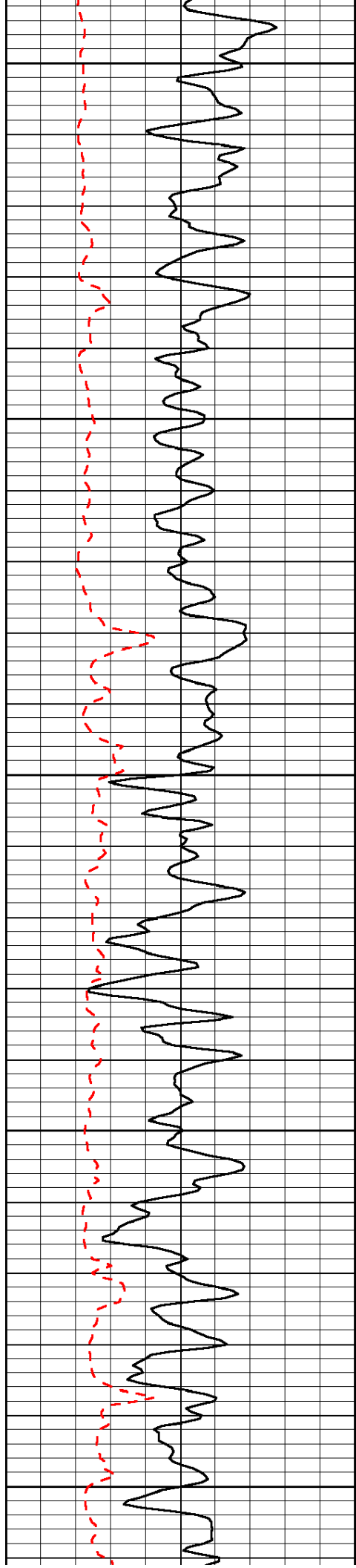


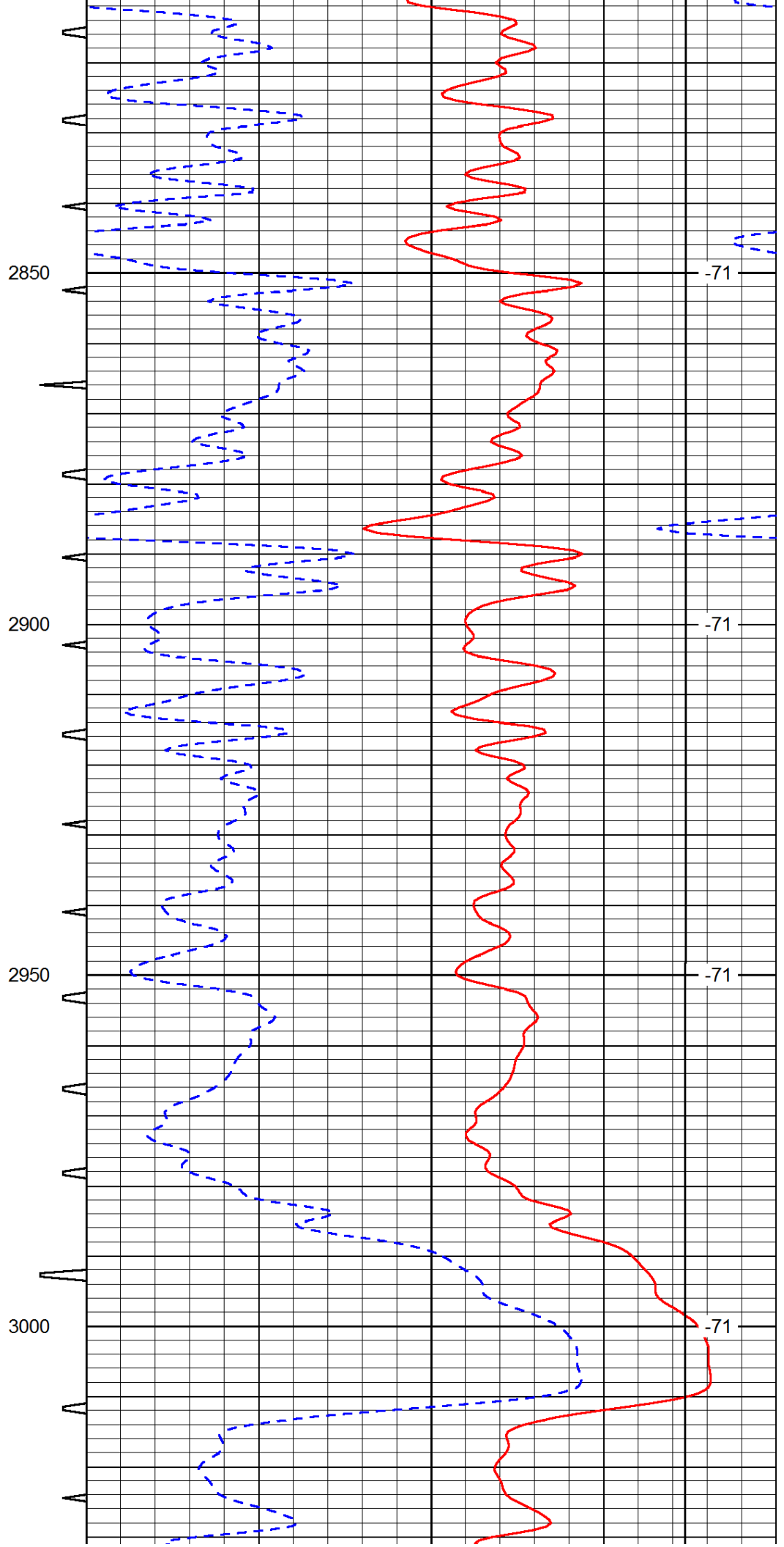
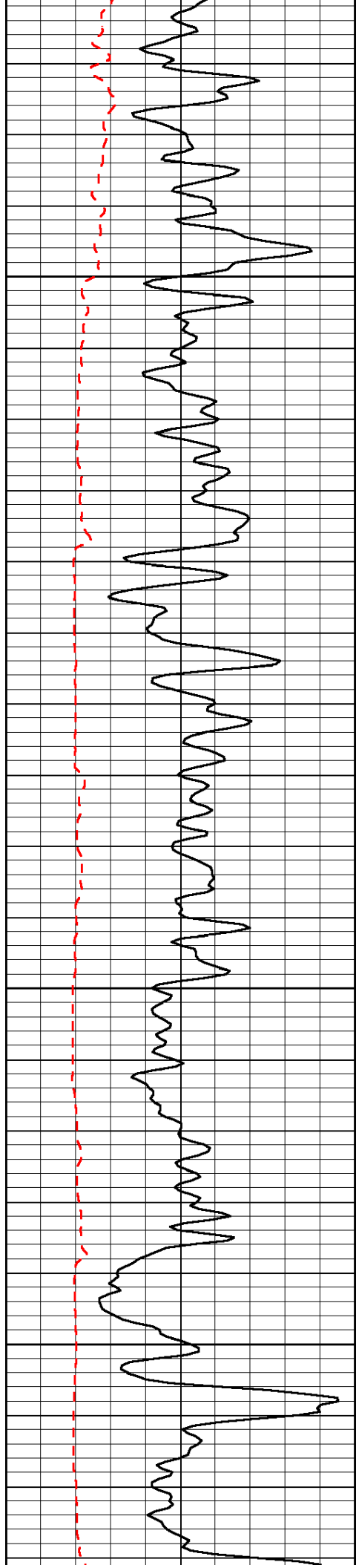












2850

-71

2900

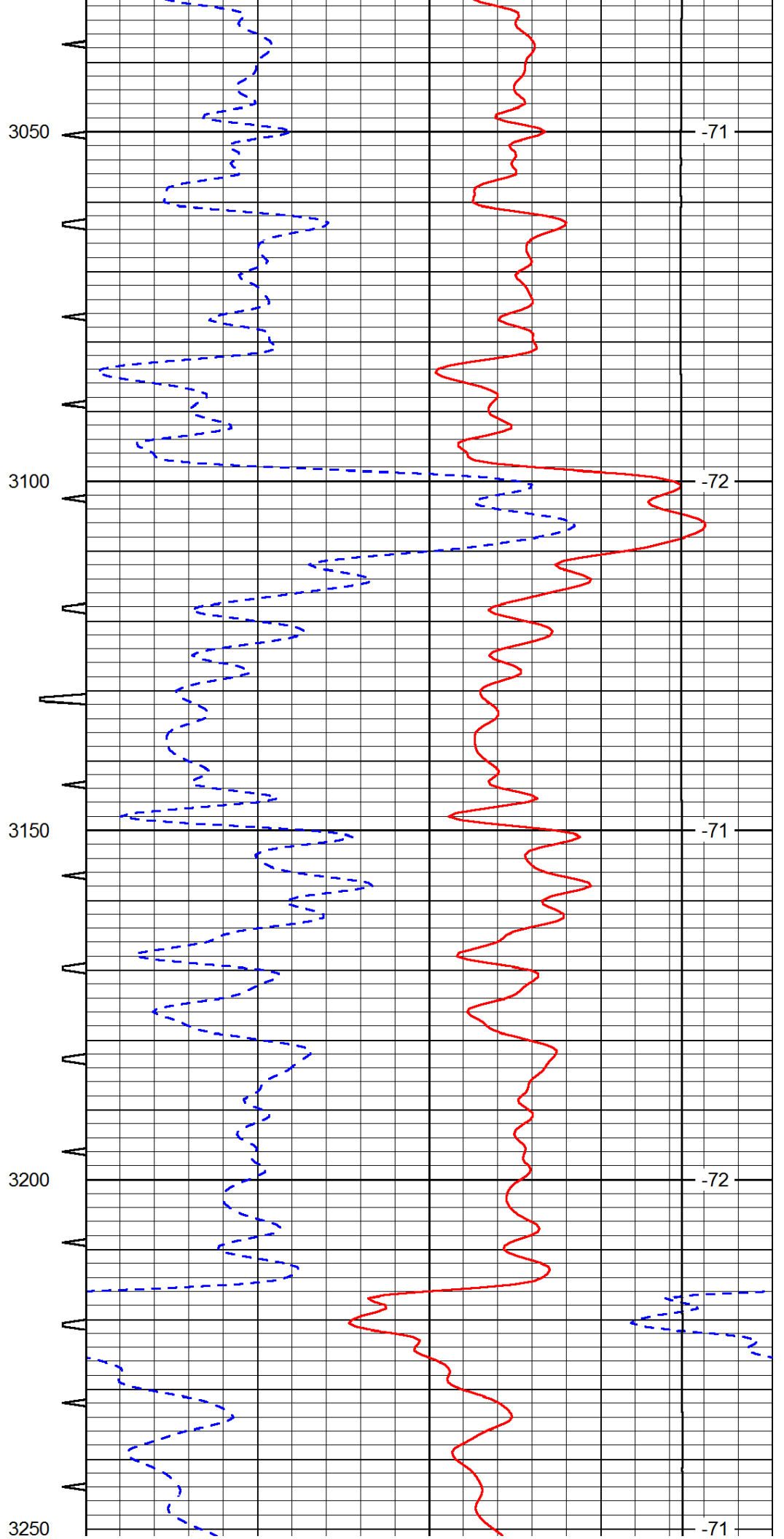
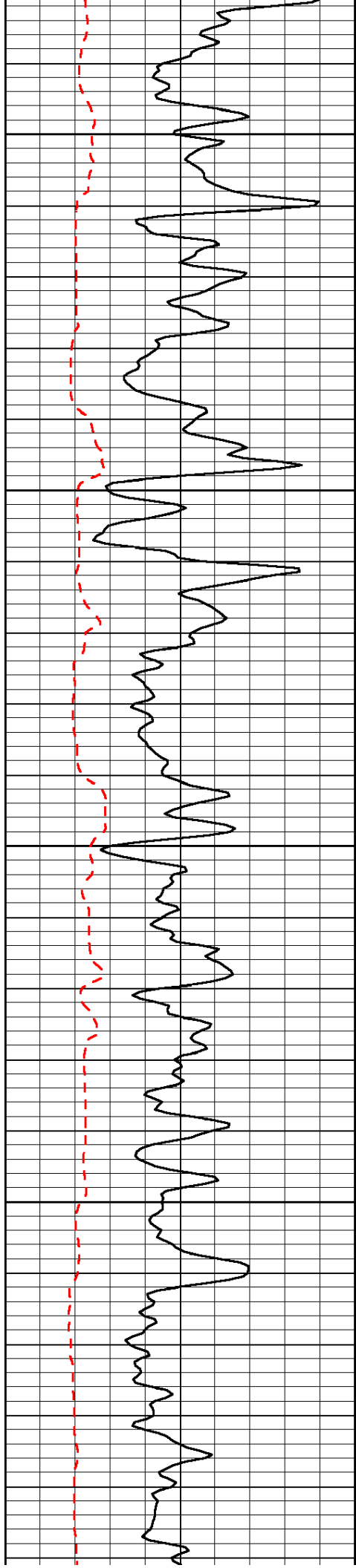
-71

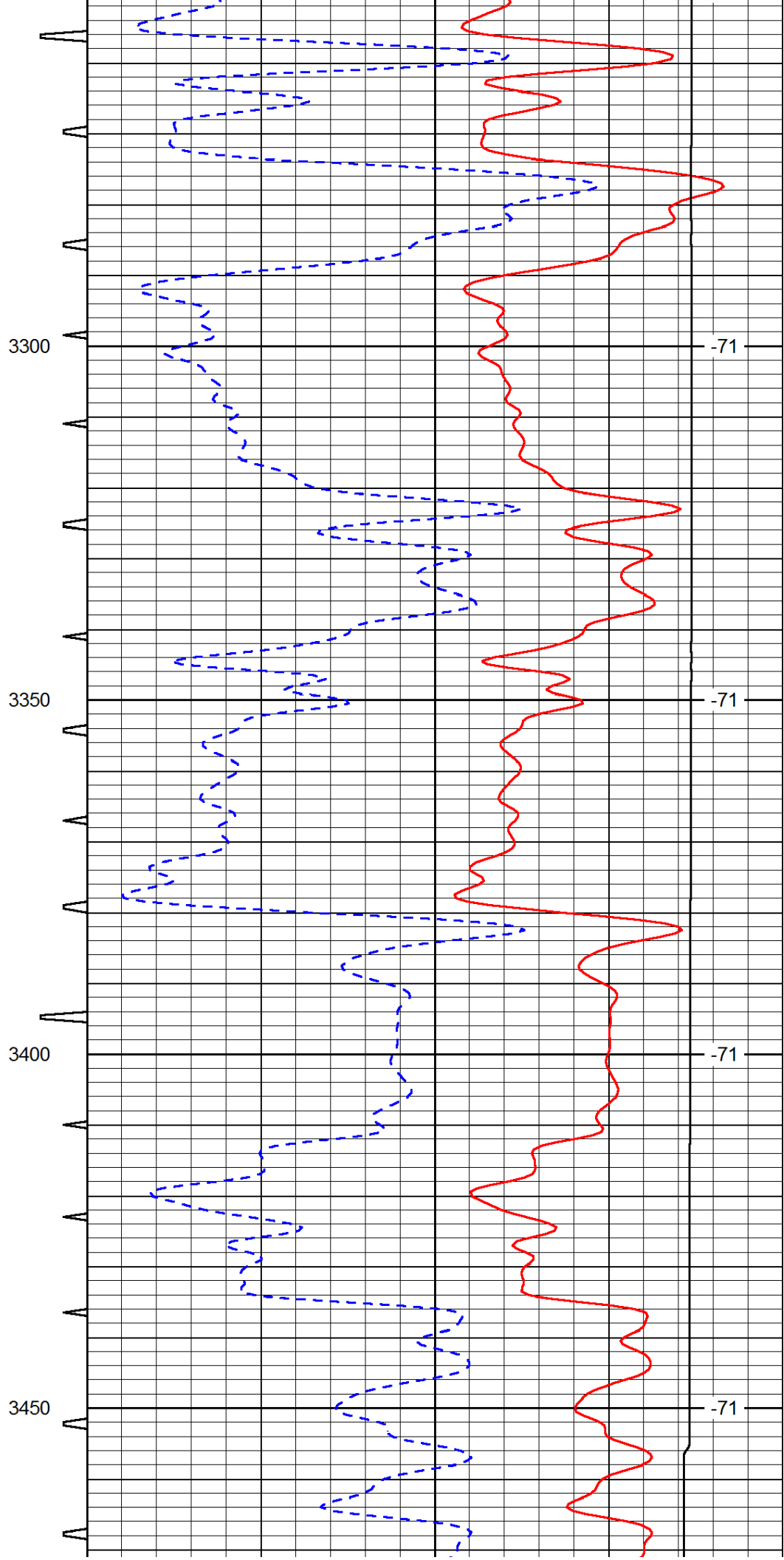
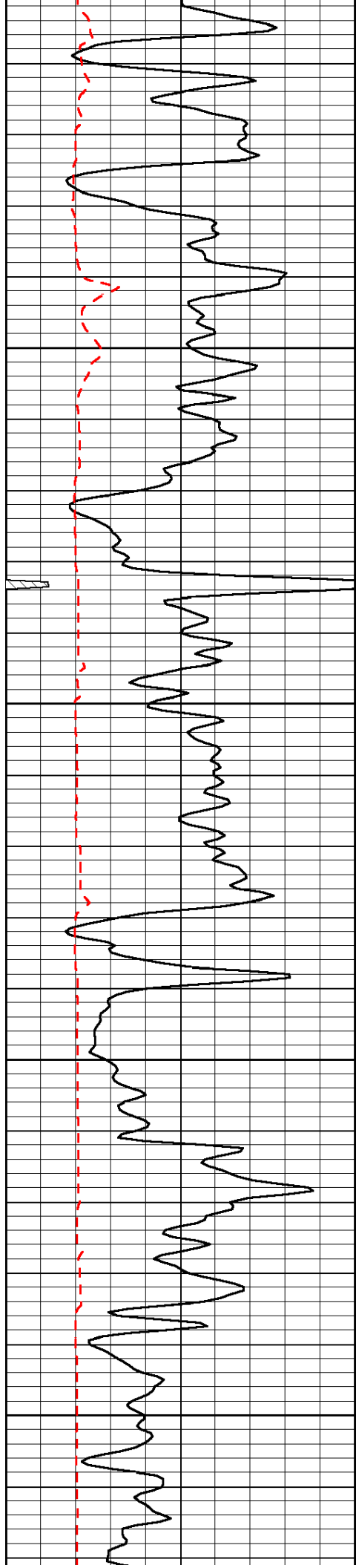
2950

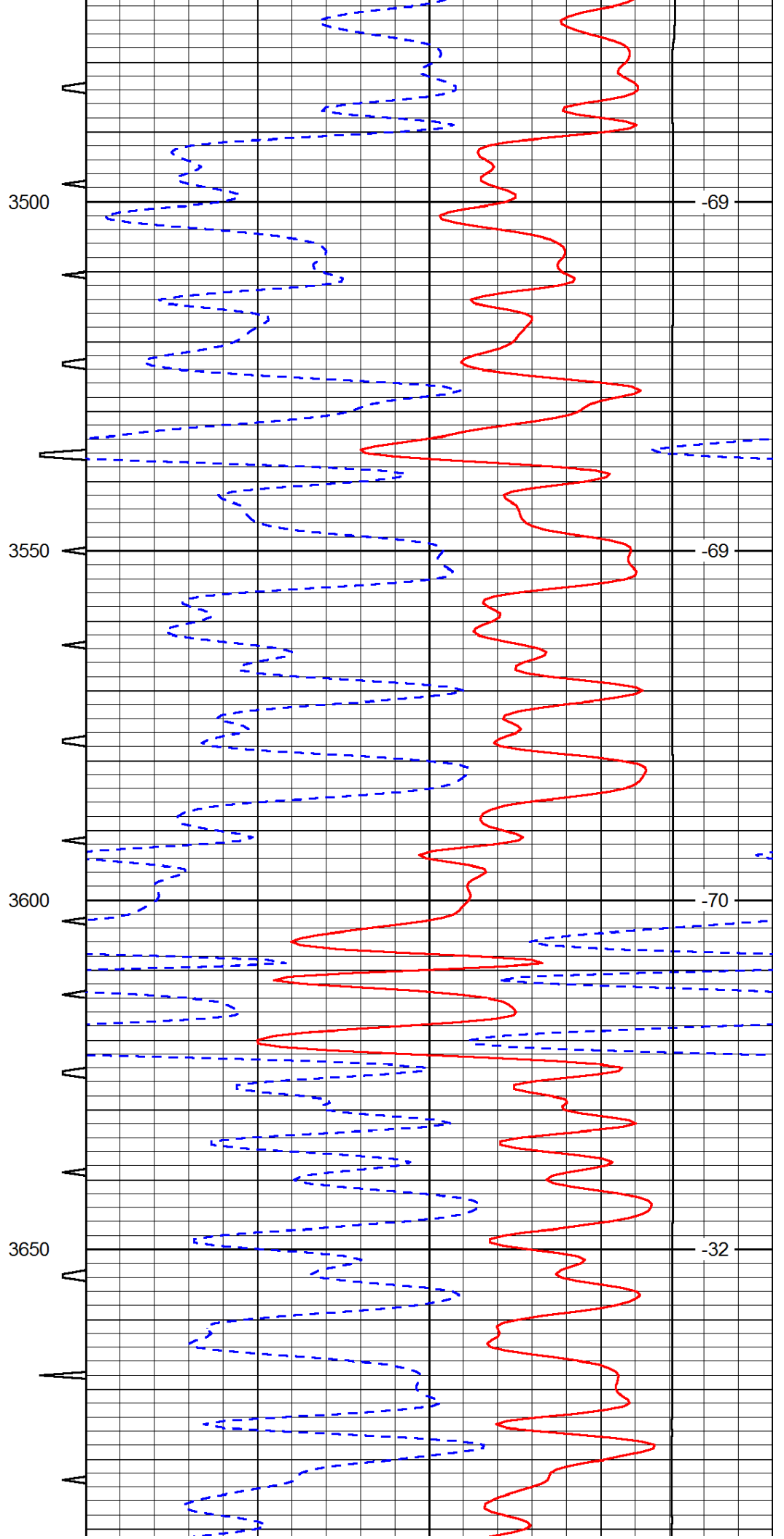
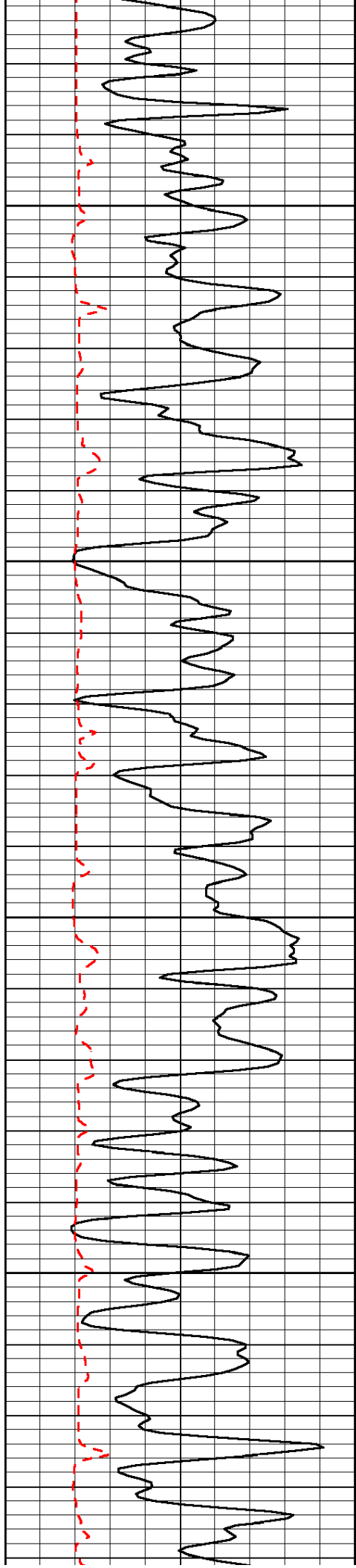
-71

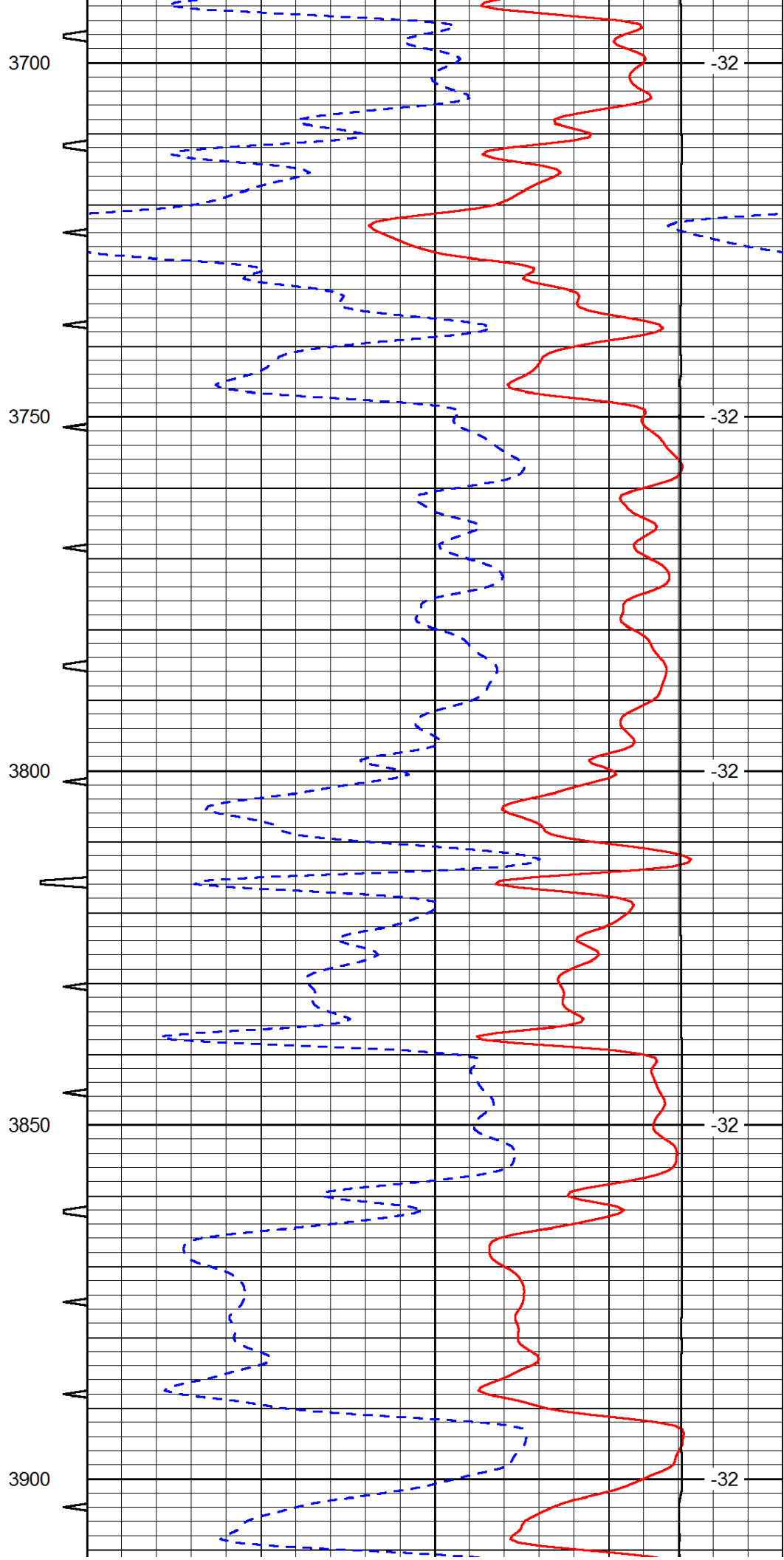
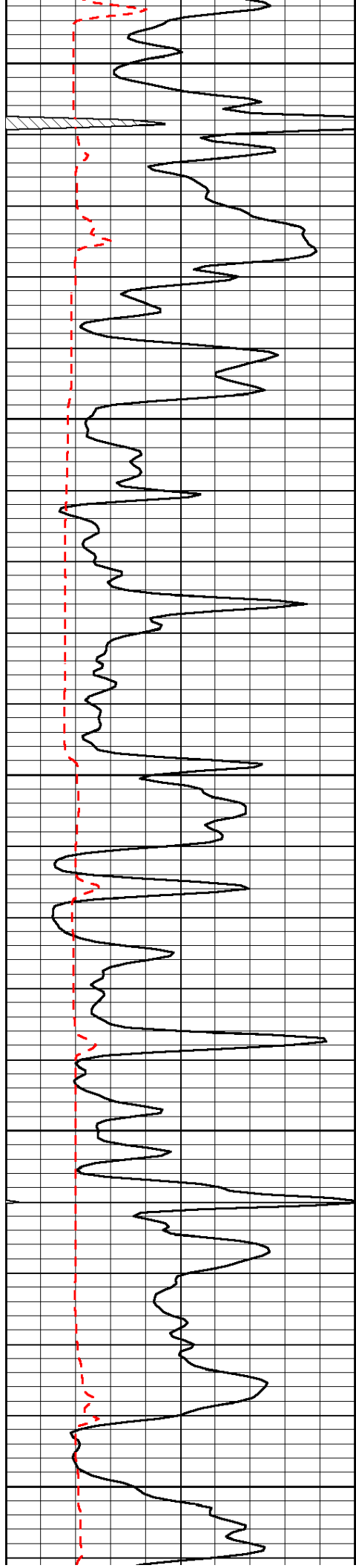
3000

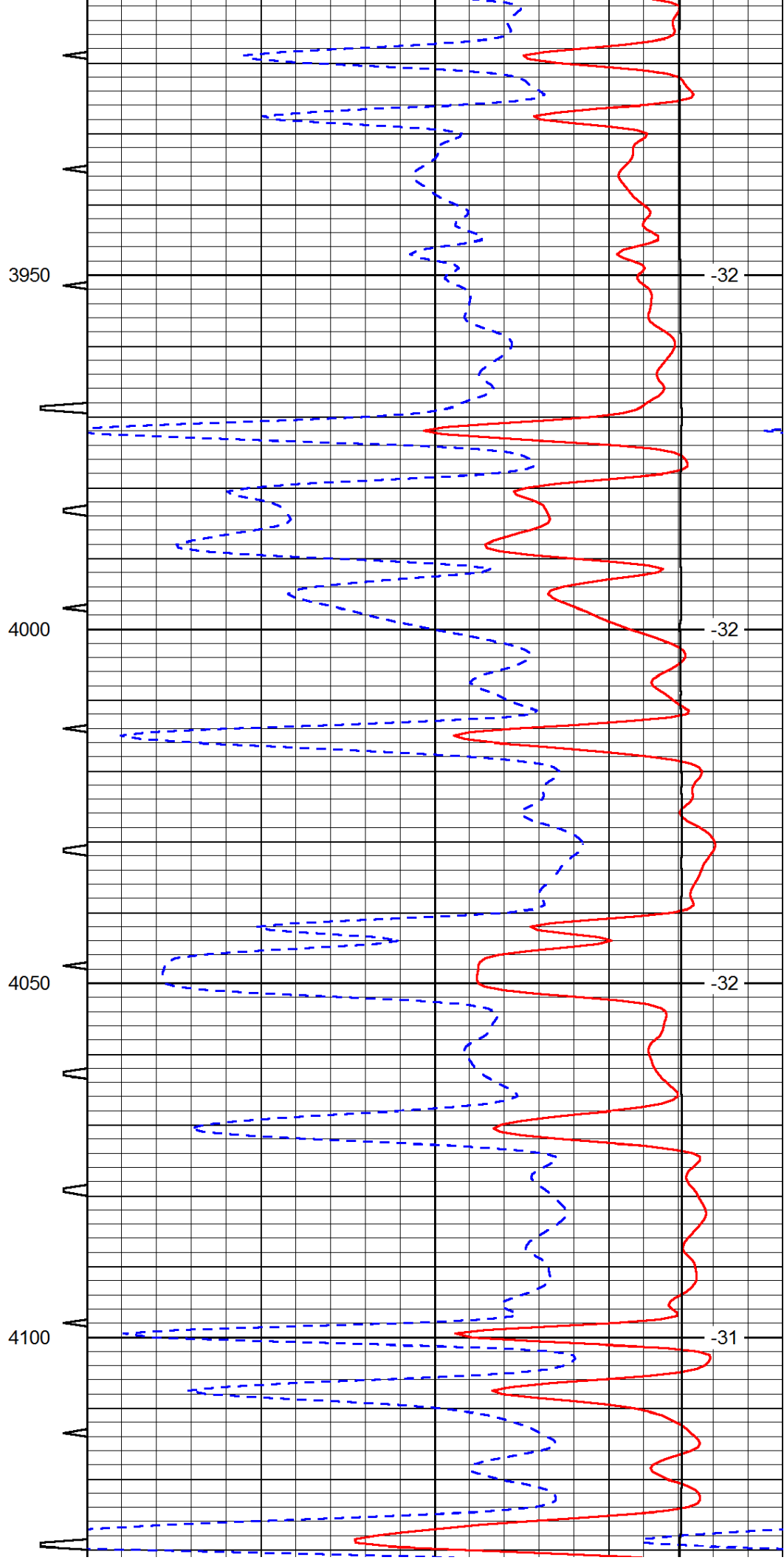
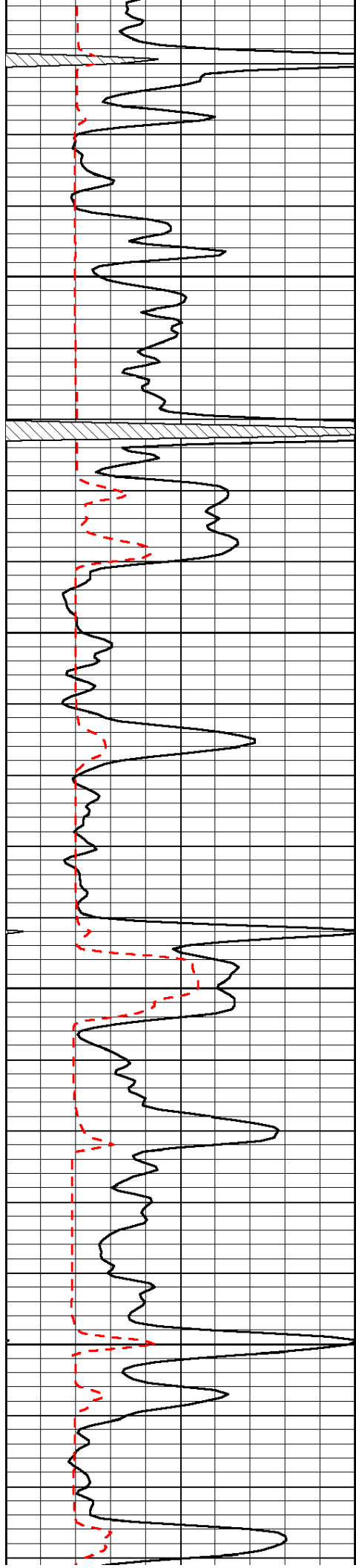
-71

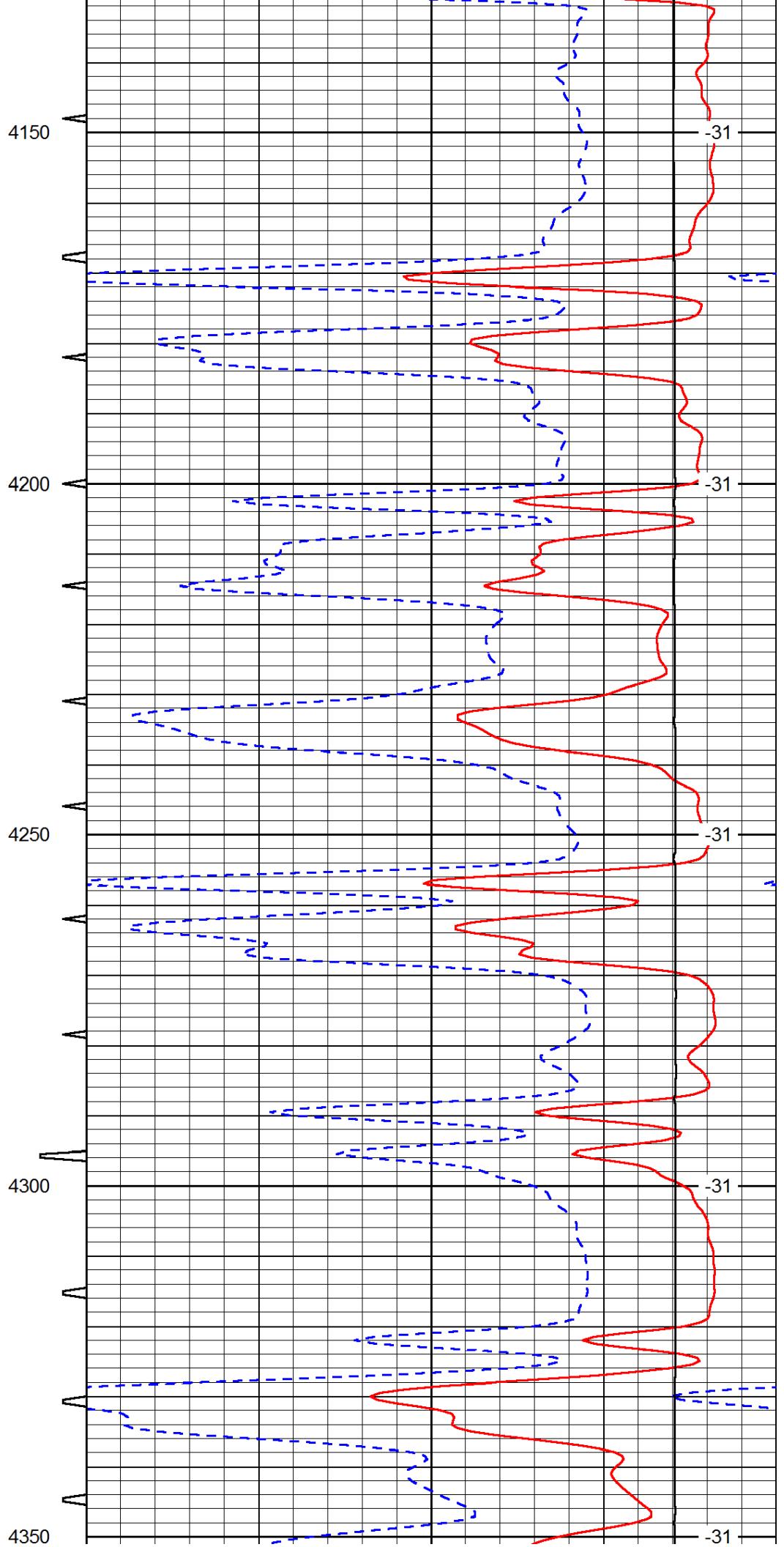
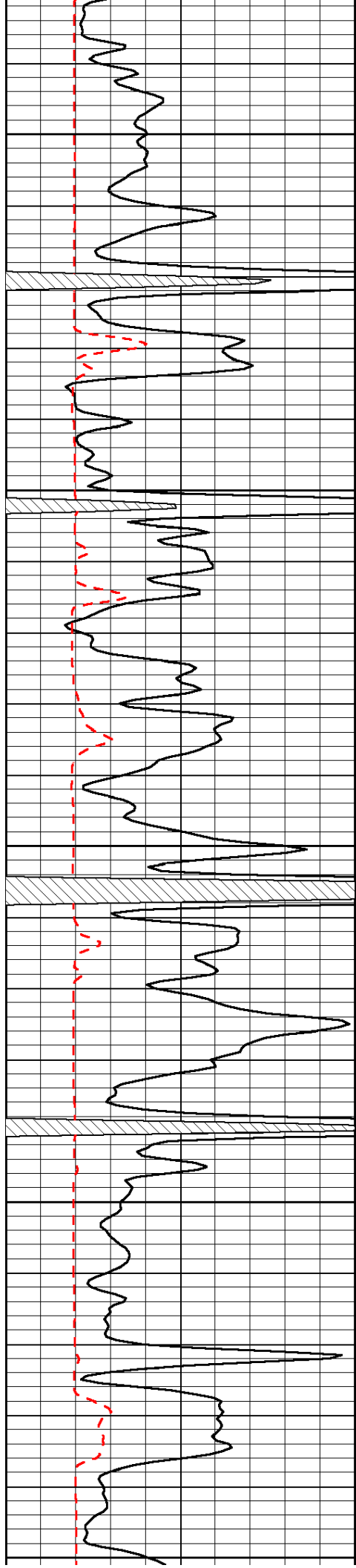


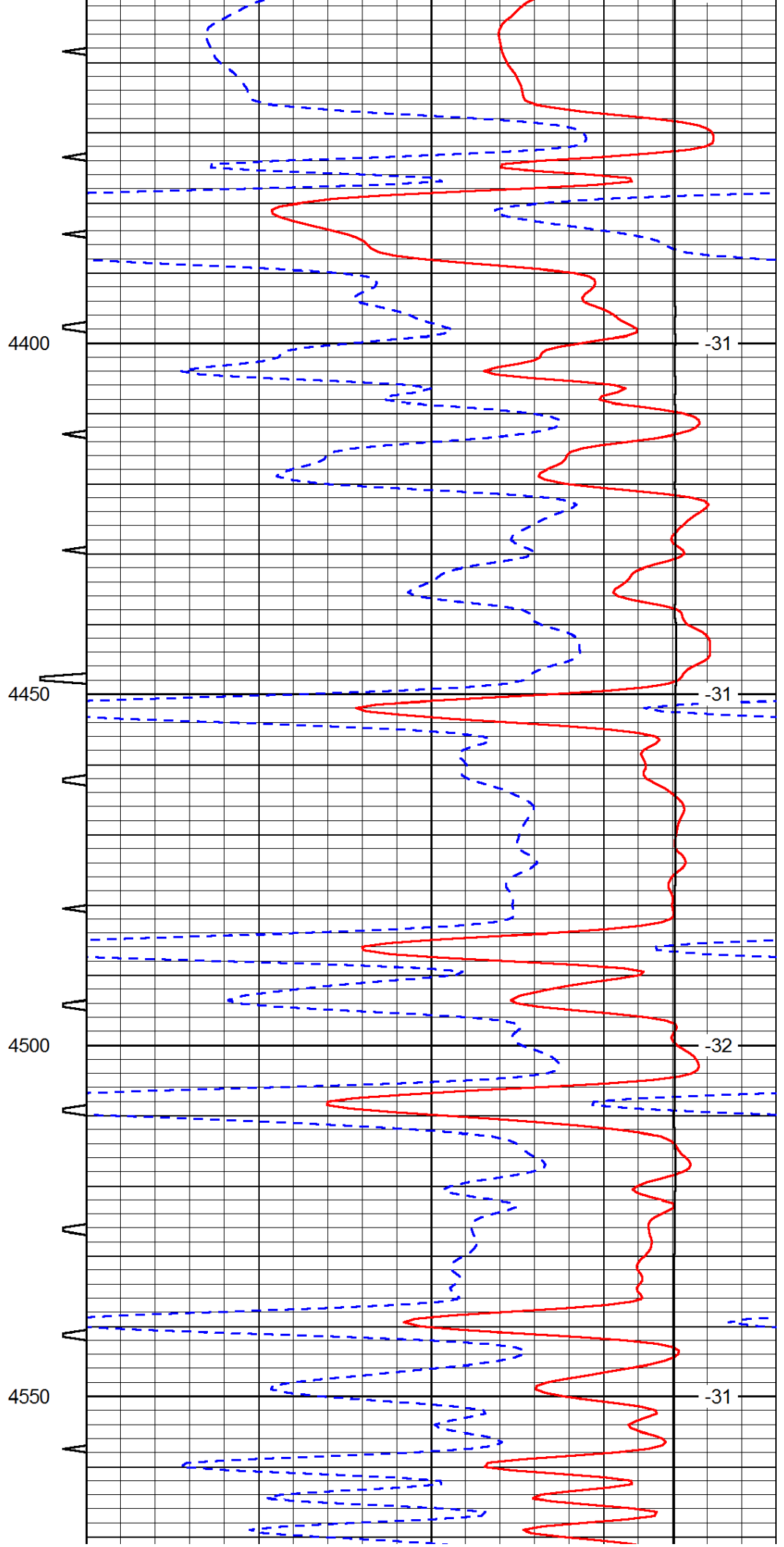
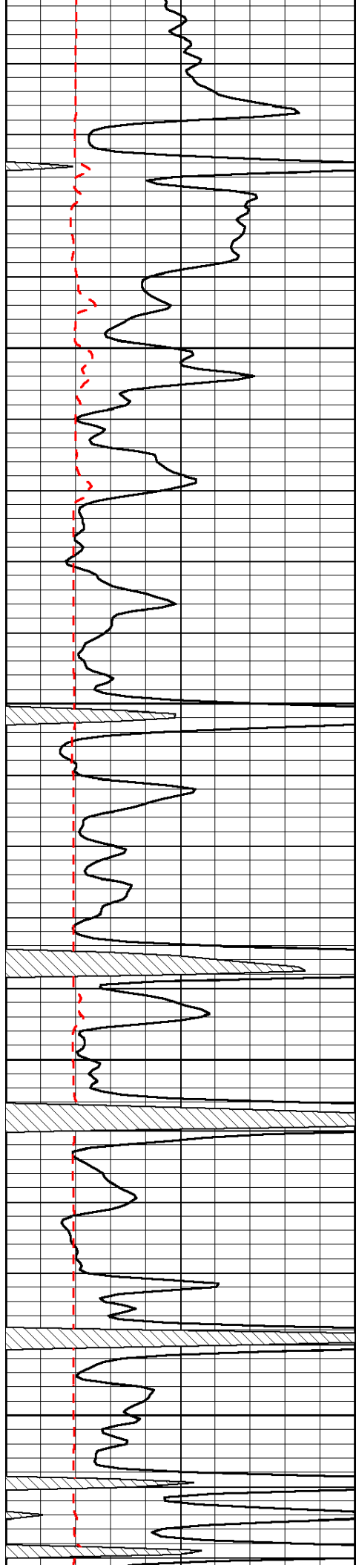


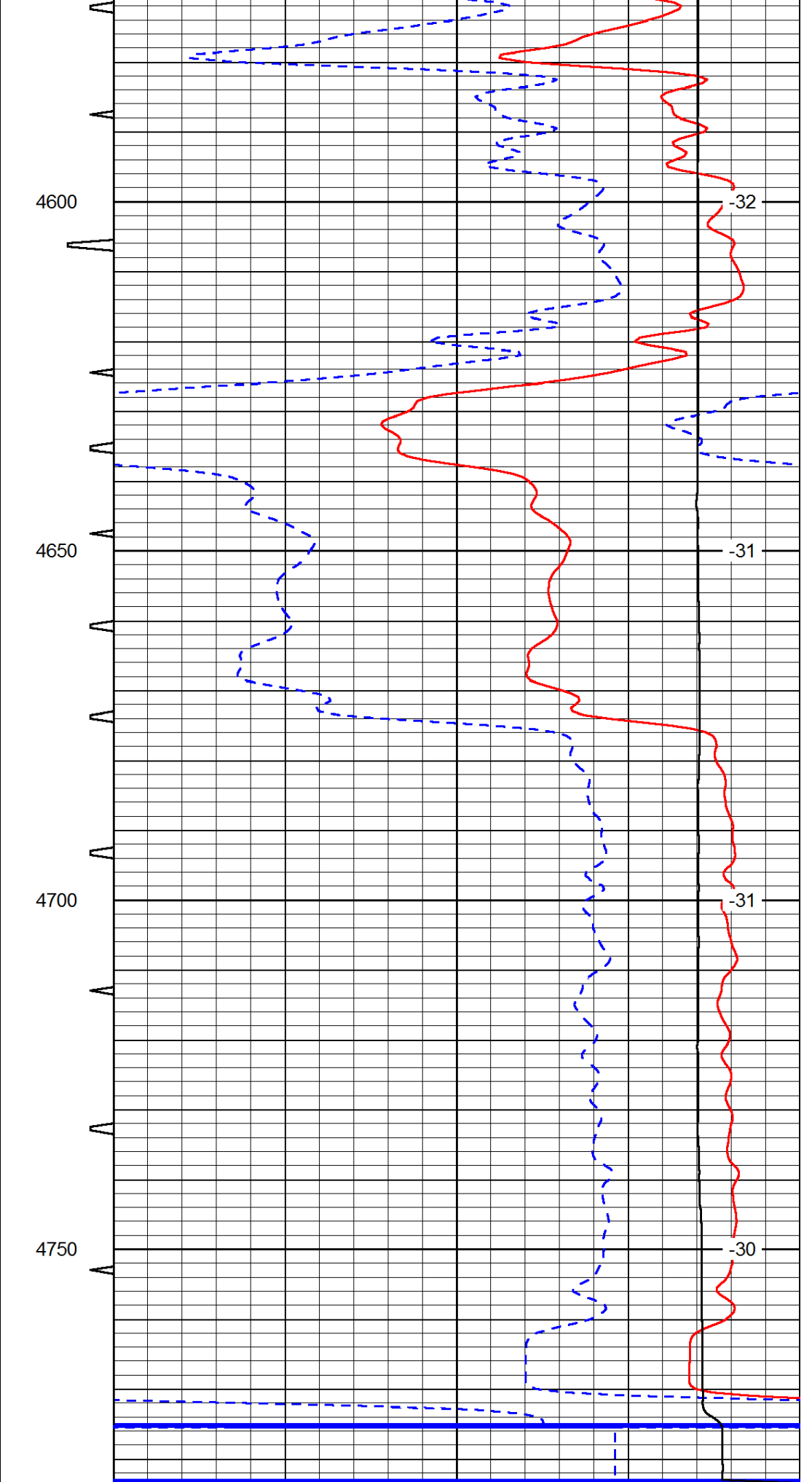
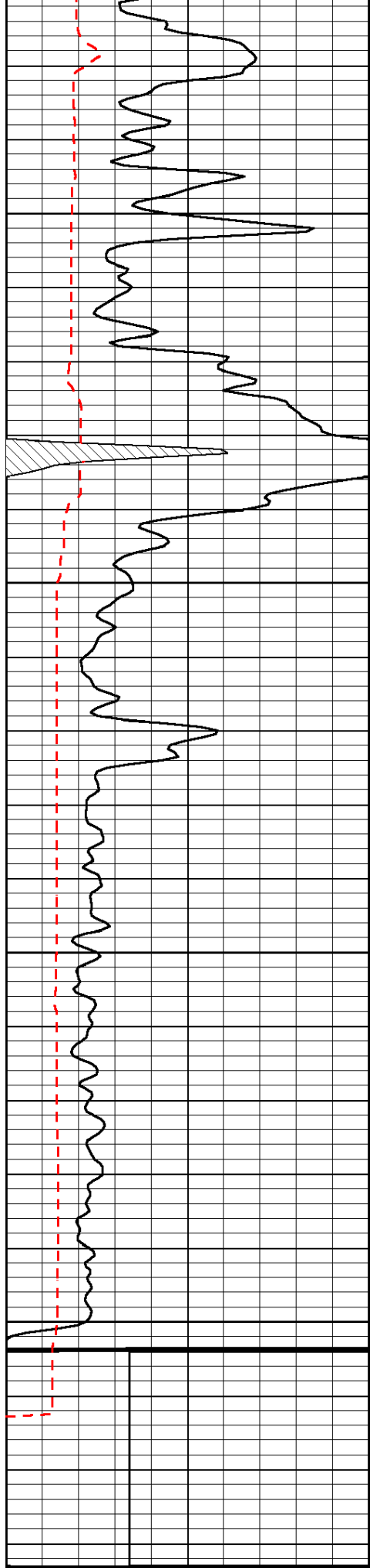












0	Gamma Ray	150	Sonic Int	140	Delta Time (usec/ft)	40
150	Gamma Ray	300	5	30	SPOR	-10

100	Gamma Ray	000	0	00	01 OR	10
6	Caliper (GAPI)	16		15000	LTEN (lb)	0
						LSPD