



Pioneer Energy Services

Microresistivity Log

15-109-21,274-00-00

API No.

Company **Murfin Drilling Company, Inc.**

Well **Racette #2-12**

Field **Tom Tom**

County **Logan** State

Kansas

Location **1320' FNL & 990' FEL**

Other Services
CNL/CDL
DIL/BHCS

Sec: **12** Twp: **13S** Rge: **33W**

Permanent Datum **Ground Level** Elevation **3033**
Log Measured From **Kelly Bushing** 11 Ft. Above Perm. Datum
Drilling Measured From **Kelly Bushing**

Elevation
K.B. 3044
D.F. 3033
G.L. 3033

Date	4/20/2014	
Run Number	Two	
Depth Driller	4770	
Depth Logger	4773	
Bottom Logged Interval	4772	
Top Log Interval	3650	
Casing Driller	8.625 @ 225	
Casing Logger	225	
Bit Size	7.875	
Type Fluid in Hole	Chemical	
Salinity, ppm CL	9000	
Density / Viscosity	9.4 57	
pH / Fluid Loss	10.0 9.2	
Source of Sample	Flowline	
Rm @ Meas. Temp	0.58 @ 67	
Rmf @ Meas. Temp	0.44 @ 67	
Rmc @ Meas. Temp	0.78 @ 67	
Source of Rmf / Rmc	Charts	
Rm @ BHT	0.31 @ 124	
Operating Rig Time	5 Hours	
Max Rec. Temp. F	124	
Equipment Number	15	
Location	Hays	
Recorded By	D.Kerr	
Witnessed By	Wes Hansen	

<<< Fold Here >>>

All interpretations are opinions based on inferences from electrical or other measurements and we cannot and do not guarantee the accuracy or correctness of any interpretation, and we shall not, except in the case of gross or willful negligence on our part, be liable or responsible for any loss, costs, damages, or expenses incurred or sustained by anyone resulting from any interpretation made by any of our officers, agents or employees. These interpretations are also subject to our general terms and conditions set out in our current Price Schedule.

Comments

Thank you for using Pioneer Energy Services
www.pioneerres.com
785 625 3858

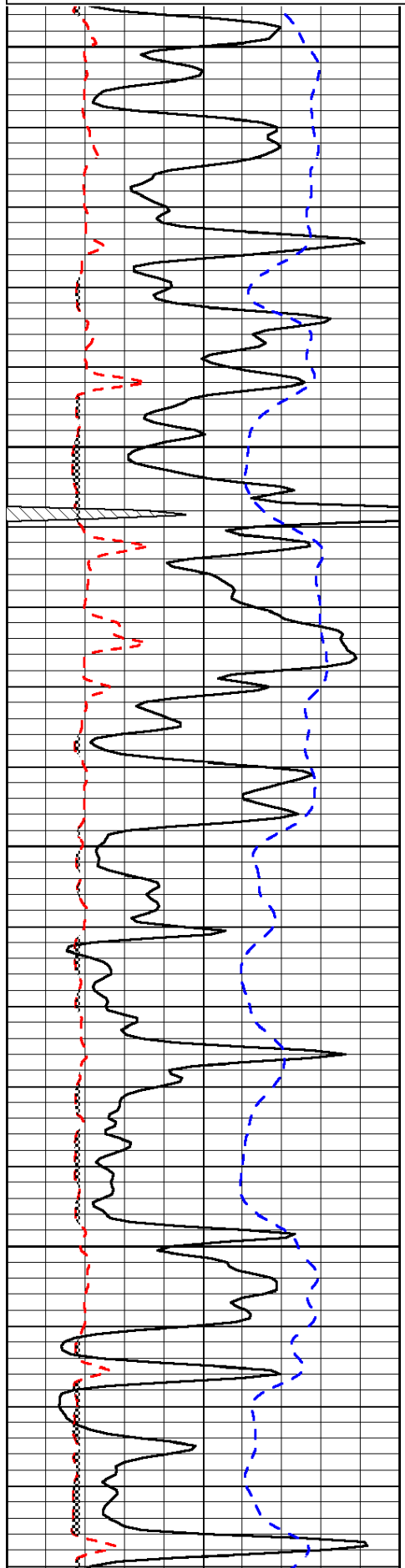
Oakley KS, South to Seneca RD,
4 West to 400 RD, 1 1/3 South, West Into

Database File: c:\warrior\data\murfin_racette #2-12\murfin_racette_2_12hd.db
Dataset Pathname: DIL\murfstk
Presentation Format: micro
Dataset Creation: Sun Apr 20 12:00:05 2014
Charted by: Depth in Feet scaled 1:240

0	Gamma Ray	150
6	Micro Log Caliper (GAPI)	16
-200	SP (mV)	0

0	Micro Inverse 1 X 1	40
0	Micro Normal 2"	40
15000	Line Weight	0

LSPD

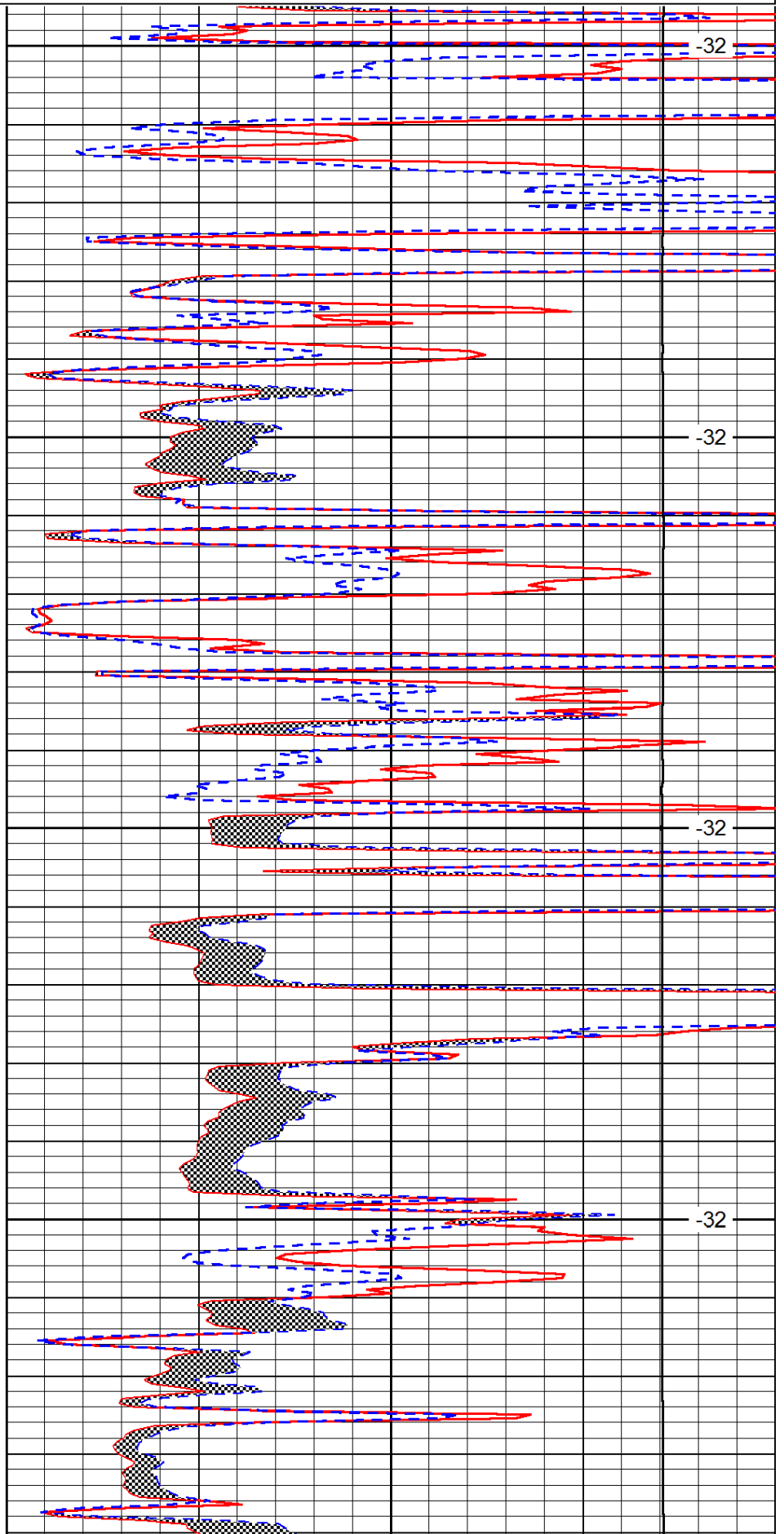


3650

3700

3750

3800

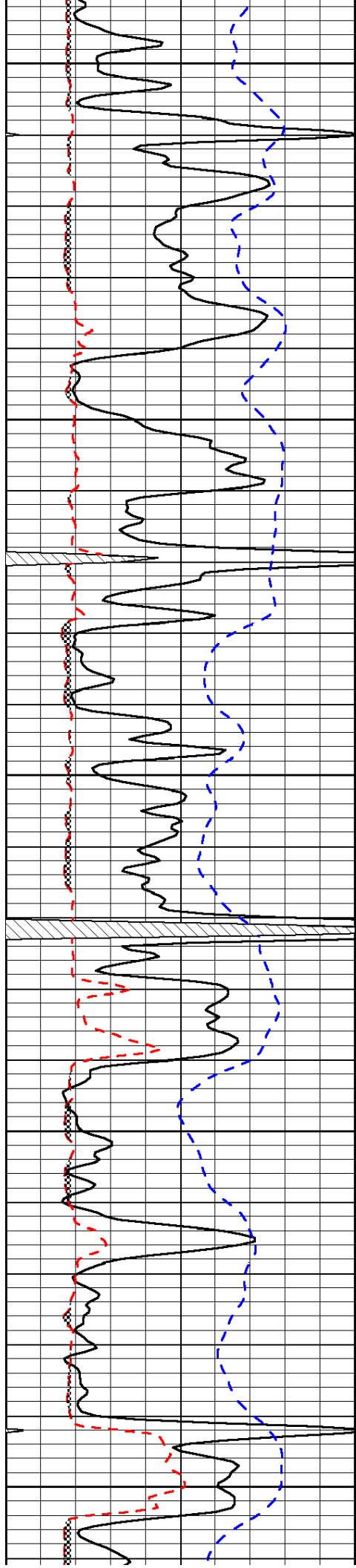


-32

-32

-32

-32



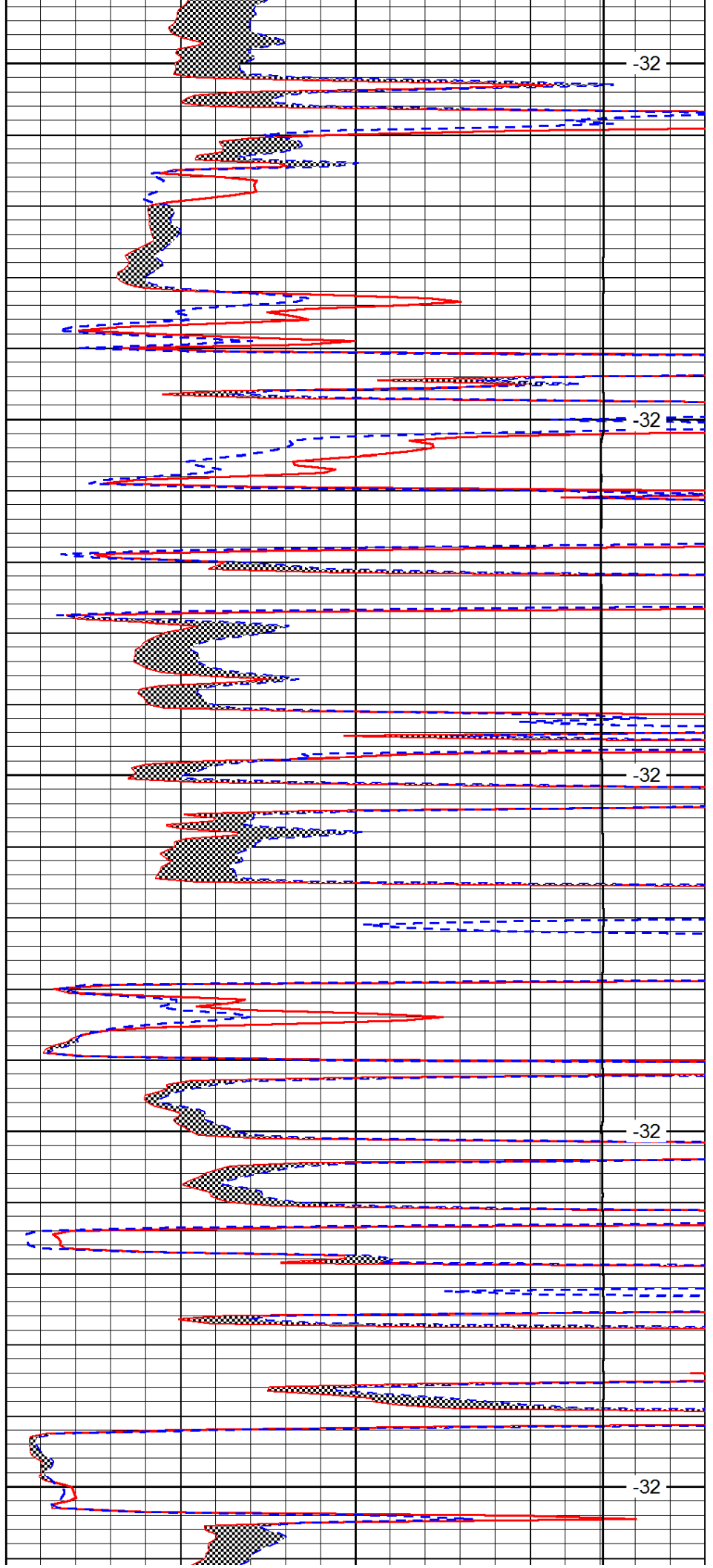
3850

3900

3950

4000

4050



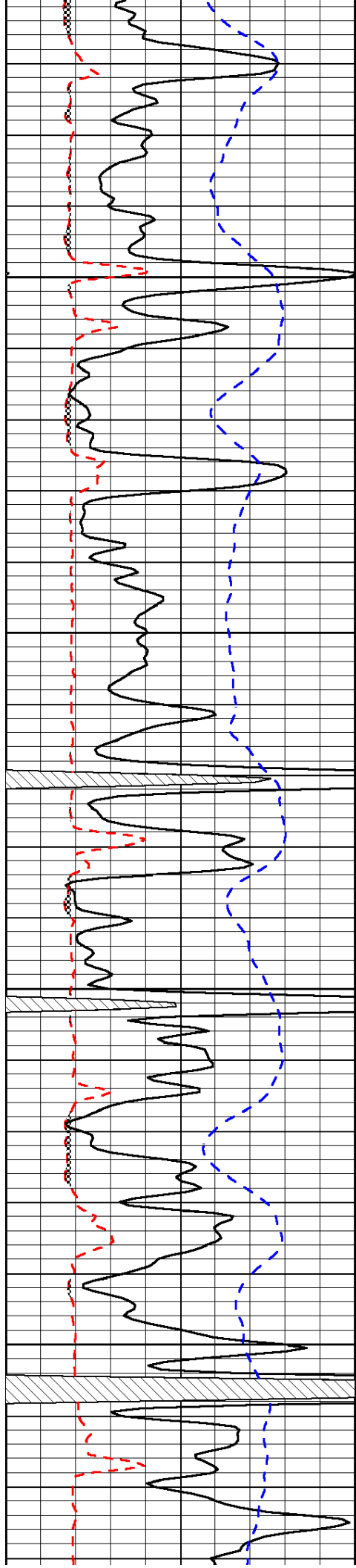
-32

-32

-32

-32

-32

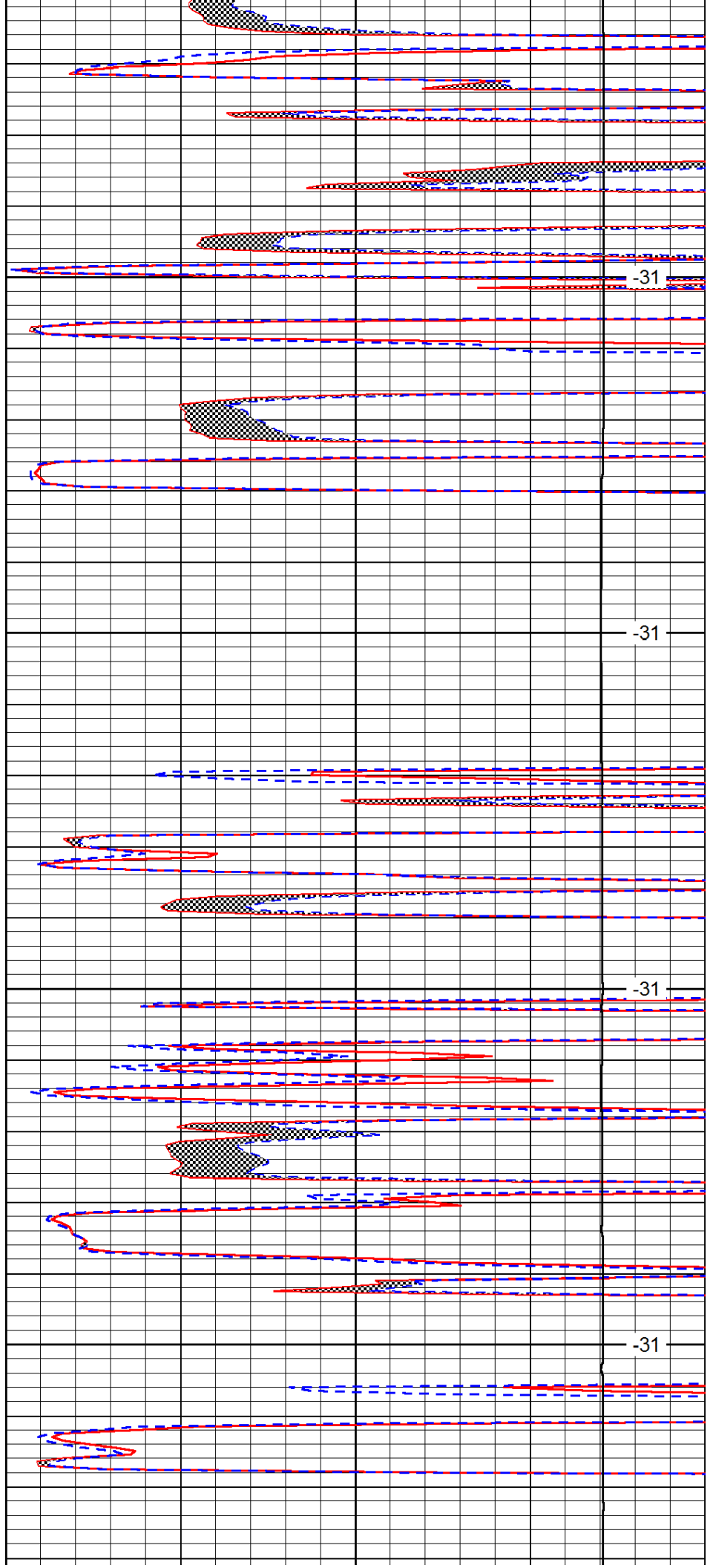


4100

4150

4200

4250

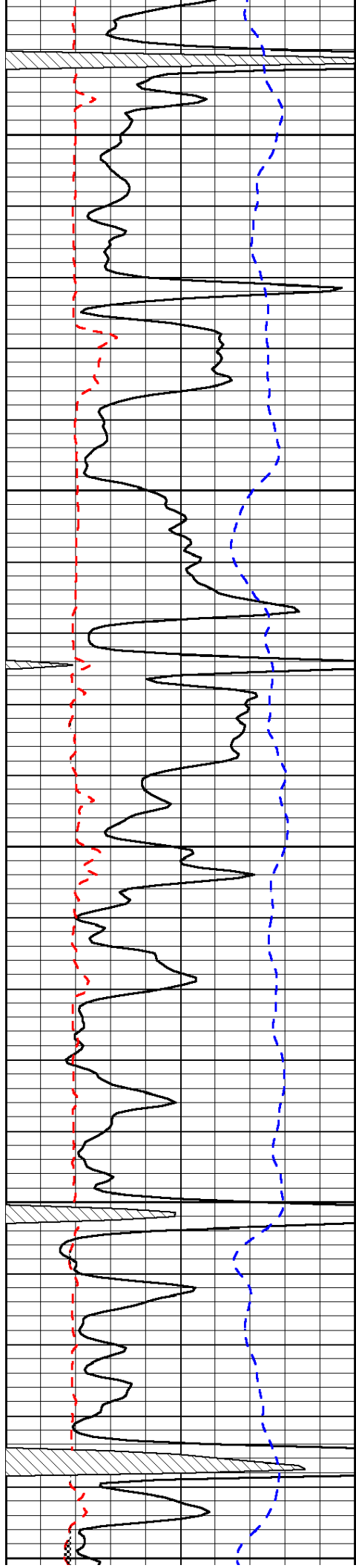


-31

-31

-31

-31



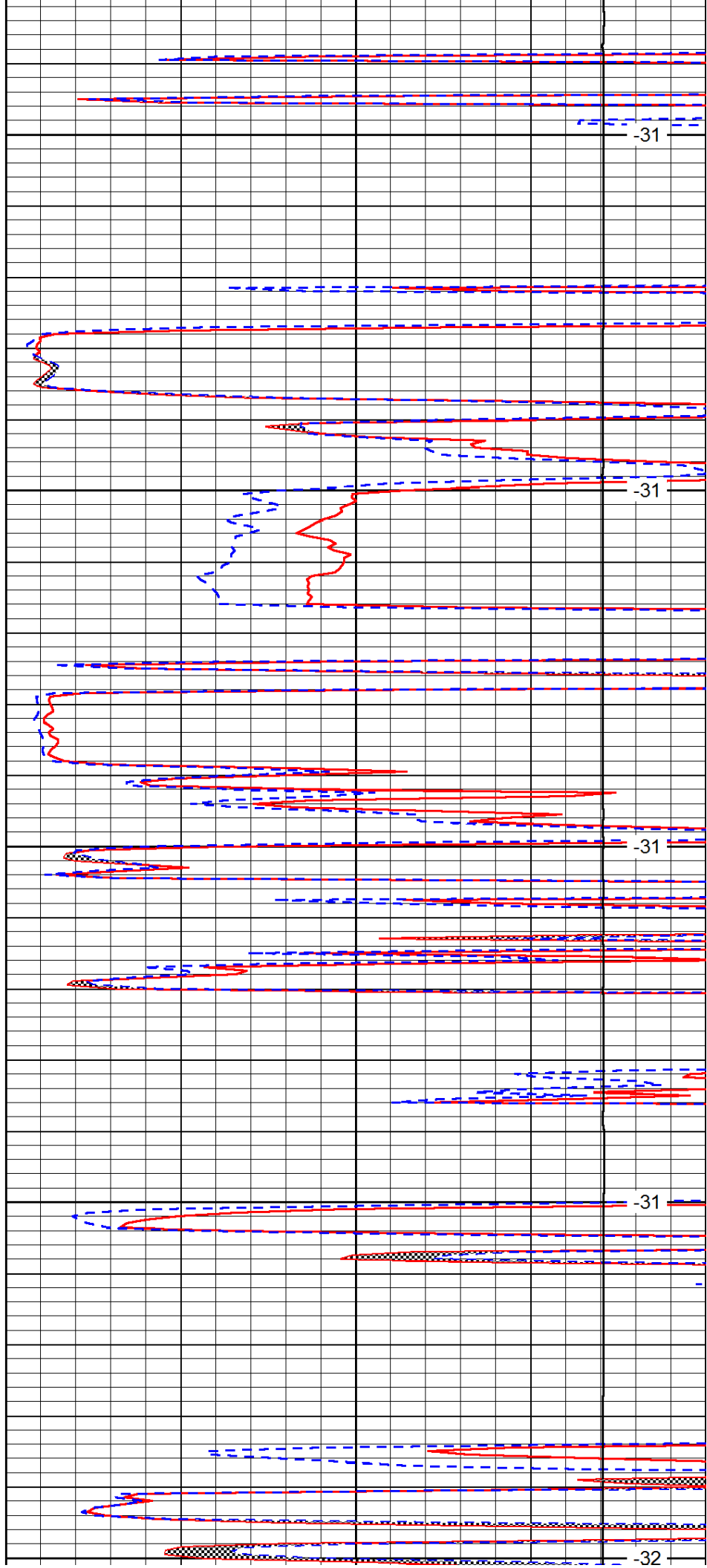
4300

4350

4400

4450

4500



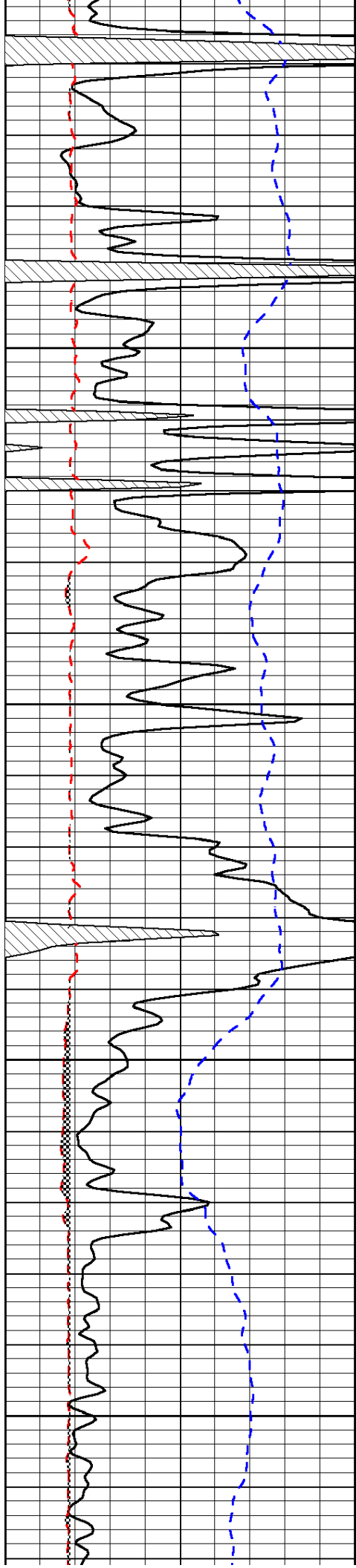
-31

-31

-31

-31

-32

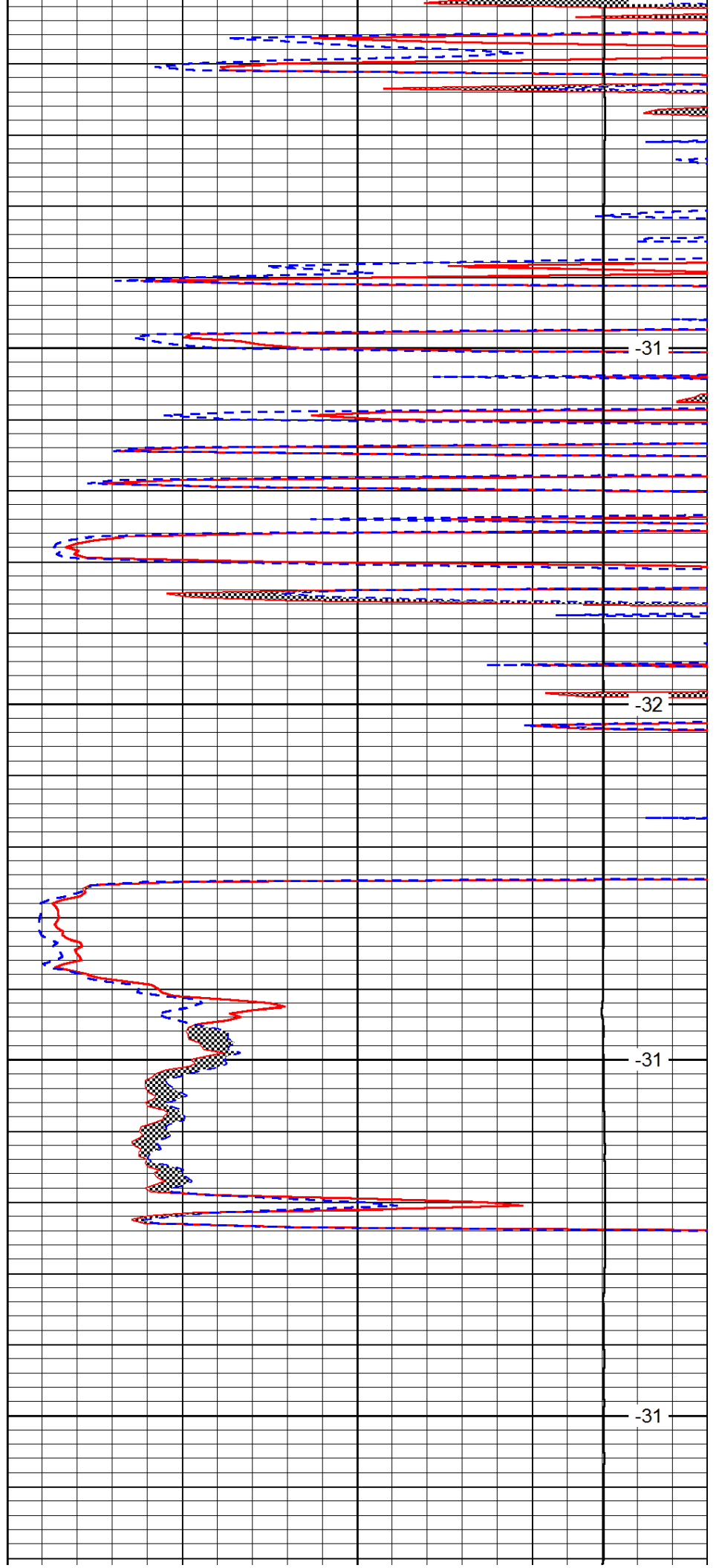


4550

4600

4650

4700

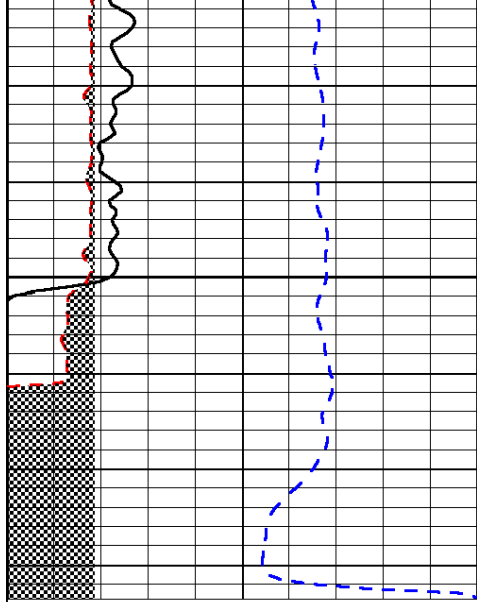


-31

-32

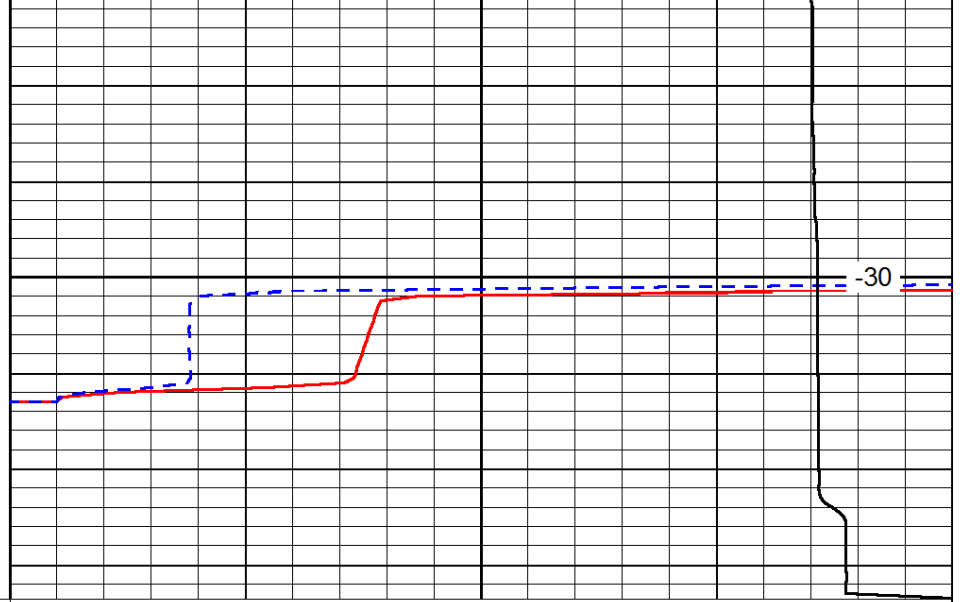
-31

-31



0	Gamma Ray	150
6	Micro Log Caliper (GAPI)	16
-200	SP (mV)	0

4750



0	Micro Inverse 1 X 1	40
0	Micro Normal 2''	40
15000	Line Weight	0

LSPD