



Pioneer Energy Services

Radiation Guard Log

15-153-21002-00-00

API No.

Company **Berexco, LLC**
 Well **Michael #8-22**
 Field **East Fork**
 County **Rawlins** State **Kansas**

Location **990' FNL & 330' FEL**

Sec: **22** Twp: **1S** Rge: **36W**

Other Services
MEL

Permanent Datum **Ground Level** Elevation **3243**
 Log Measured From **Kelly Bushing** 13 Ft. Above Perm. Datum
 Drilling Measured From **Kelly Bushing**

Elevation
 K.B. 3256
 D.F. 3243
 G.L. 3243

Date	4/17/2014	
Run Number	One	
Depth Driller	4480	
Depth Logger	4478	
Bottom Logged Interval	4477	
Top Log Interval	300	
Casing Driller	8.625 @ 314	
Casing Logger	306	
Bit Size	7.875	
Type Fluid in Hole	Chemical	
Salinity, ppm CL	700	
Density / Viscosity	9.4 64	
pH / Fluid Loss	9.0 6.8	
Source of Sample	Flowline	
Rm @ Meas. Temp	0.55 @ 40	
Rmf @ Meas. Temp	0.41 @ 40	
Rmc @ Meas. Temp	0.74 @ 40	
Source of Rmf / Rmc	Charts	
Rm @ BHT	0.18 @ 123	
Operating Rig Time	3 Hours	
Max Rec. Temp. F	123	
Equipment Number	91	
Location	Hays	
Recorded By	D. Schmidt	
Witnessed By	Pete Vollmer	

<<< Fold Here >>>

All interpretations are opinions based on inferences from electrical or other measurements and we cannot and do not guarantee the accuracy or correctness of any interpretation, and we shall not, except in the case of gross or willful negligence on our part, be liable or responsible for any loss, costs, damages, or expenses incurred or sustained by anyone resulting from any interpretation made by any of our officers, agents or employees. These interpretations are also subject to our general terms and conditions set out in our current Price Schedule.

Comments

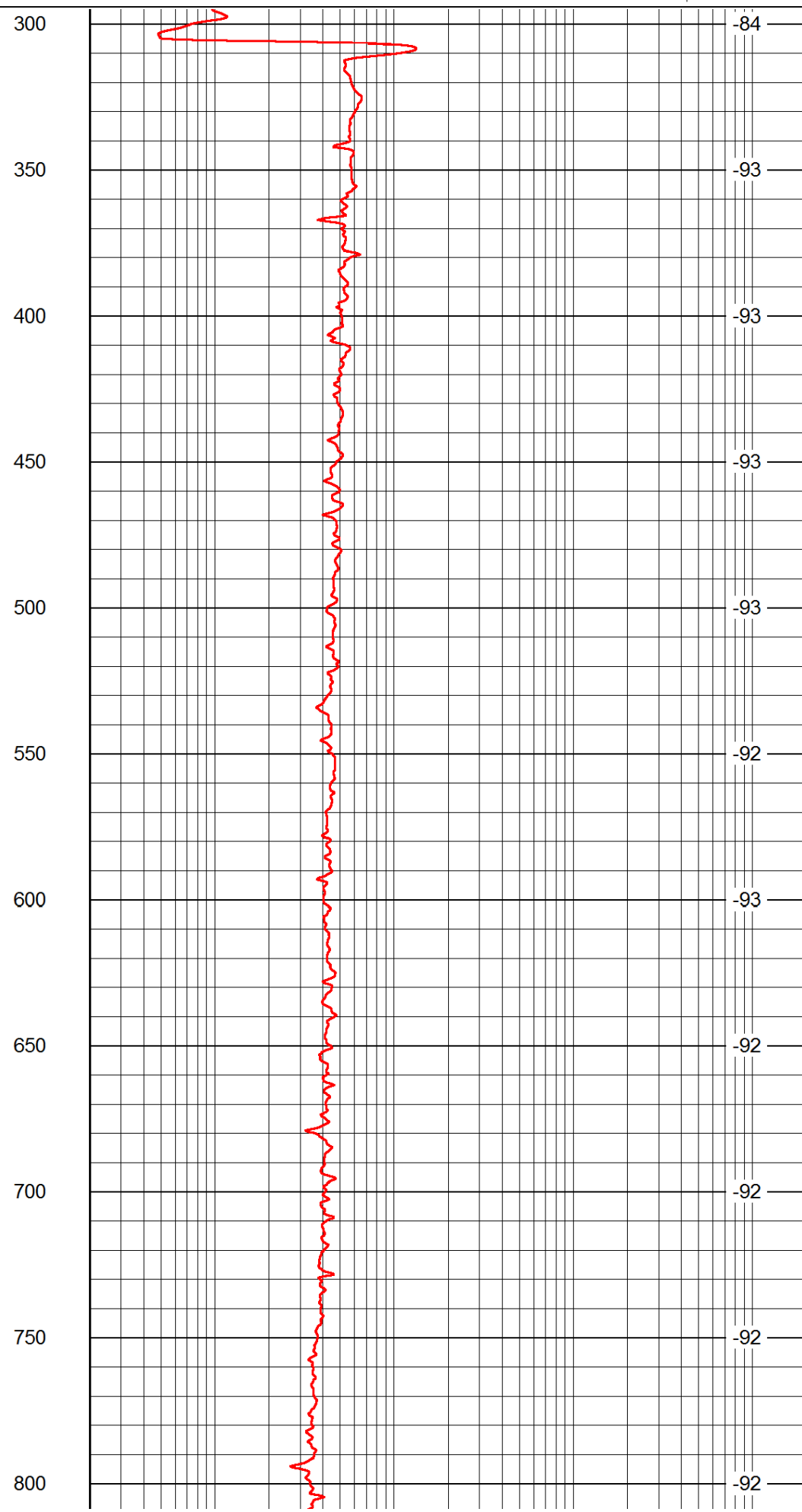
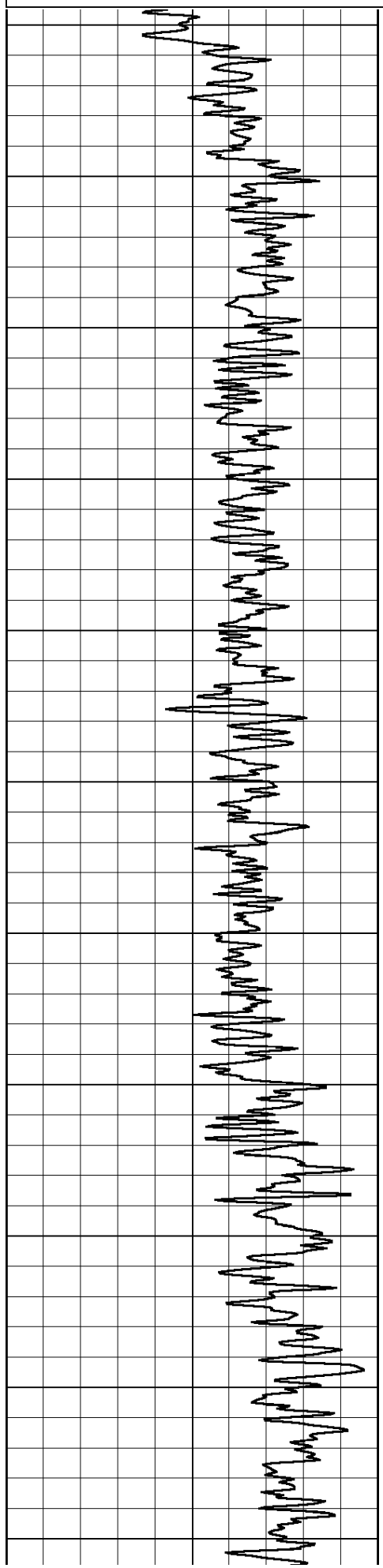
Thank you for using Pioneer Energy Services
www.pioneerenergy.com
 785 625 3858
 Beardsley,
 North to AA Rd, West to 5.5 Rd, North to BB Rd,
 1/2 West & South into

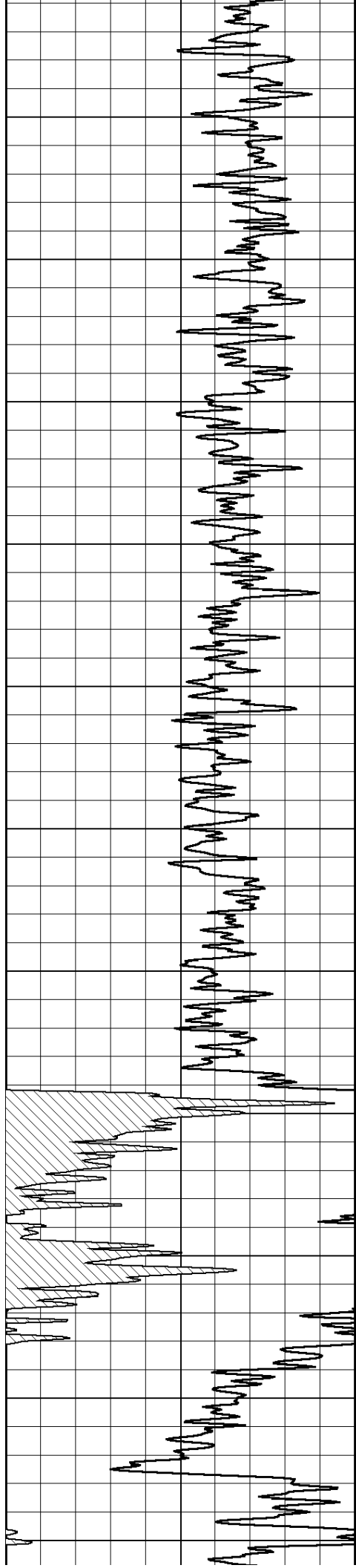
Database File: c:\warrior\data\berexco_michael #8-22\berexco_041714hd.db
 Dataset Pathname: rag/brxrag
 Presentation Format: rag2in
 Dataset Creation: Thu Apr 17 07:21:42 2014
 Charted by: Depth in Feet scaled 1:600

0 Gamma Ray 150

0.2 lgrd 2000

LSPD





850

900

950

1000

1050

1100

1150

1200

1250

1300

1350

-90

-89

-89

-89

-88

-88

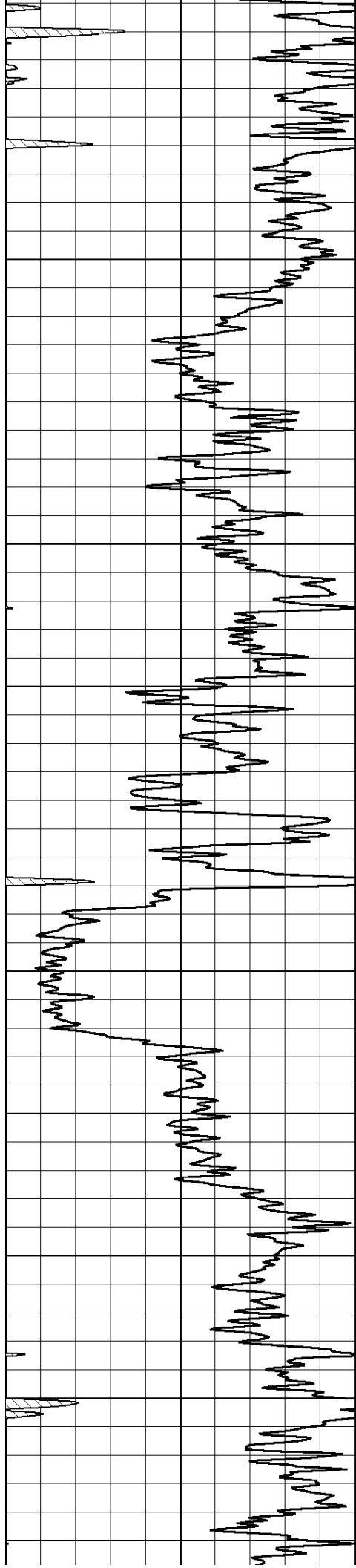
-88

-88

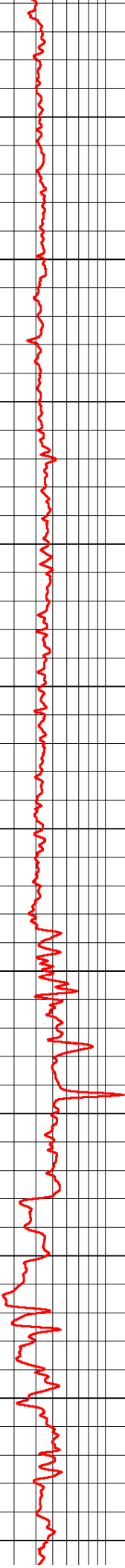
-88

-88

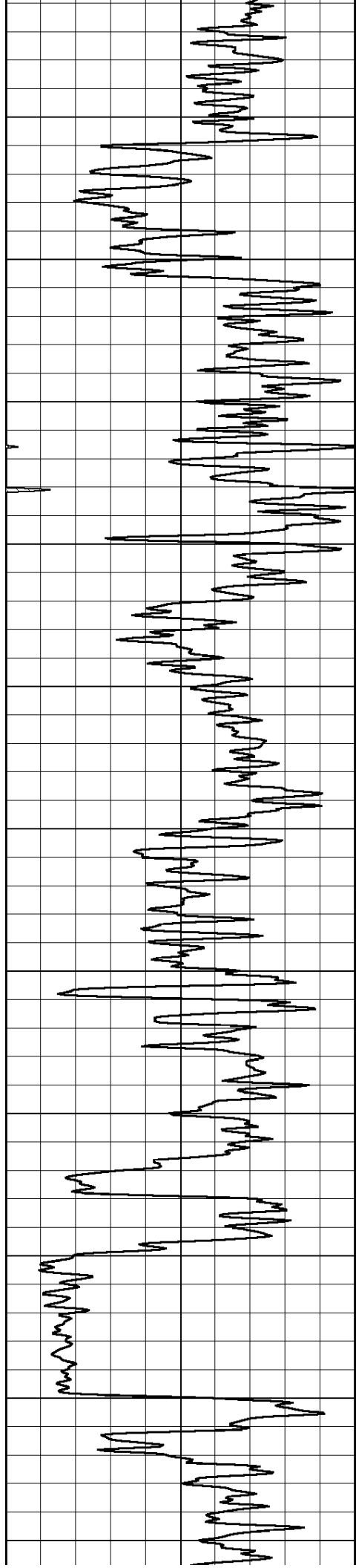
-87



1400
1450
1500
1550
1600
1650
1700
1750
1800
1850
1900



-87
-86
-86
-84
-84
-83
-91
-91
-91
-90
-90



1950

2000

2050

2100

2150

2200

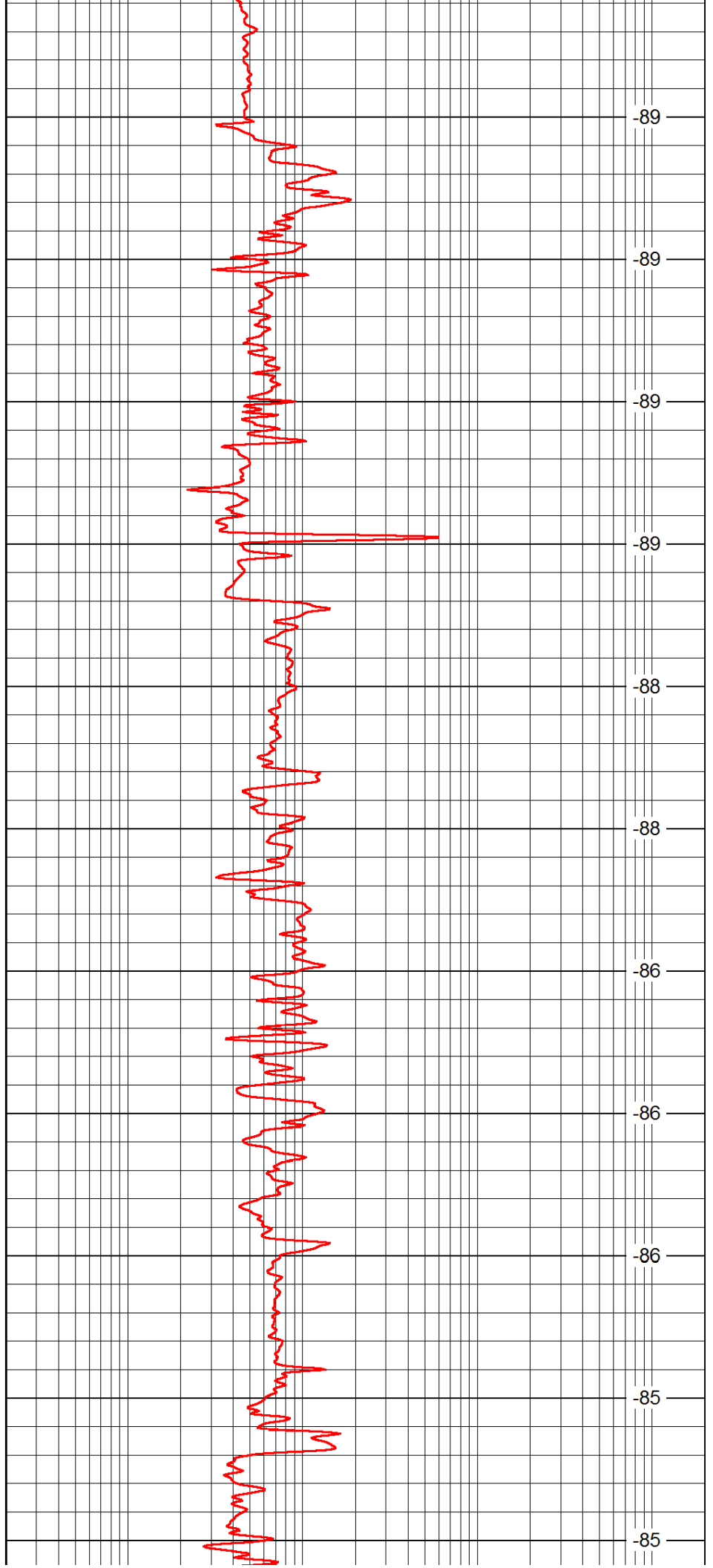
2250

2300

2350

2400

2450



-89

-89

-89

-89

-88

-88

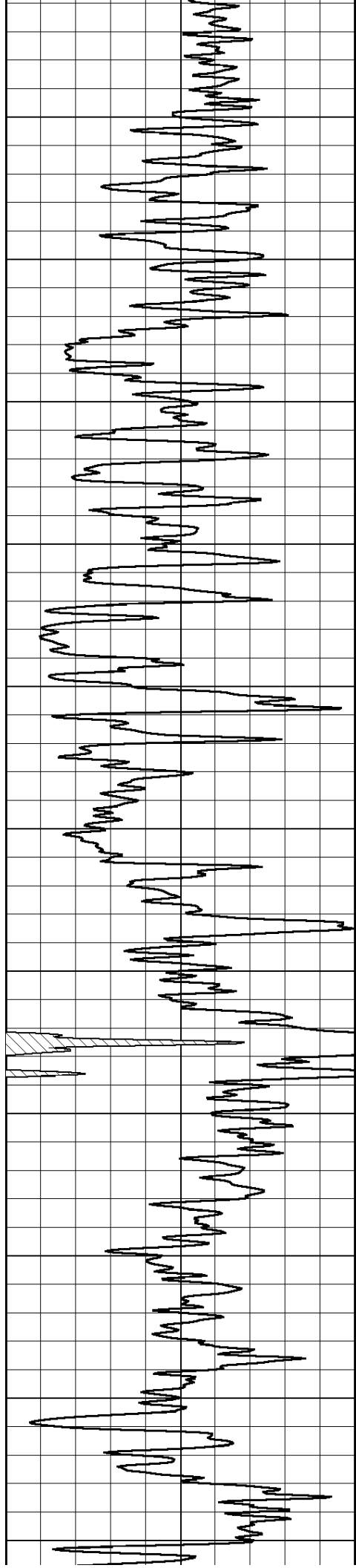
-86

-86

-86

-85

-85



2500

2550

2600

2650

2700

2750

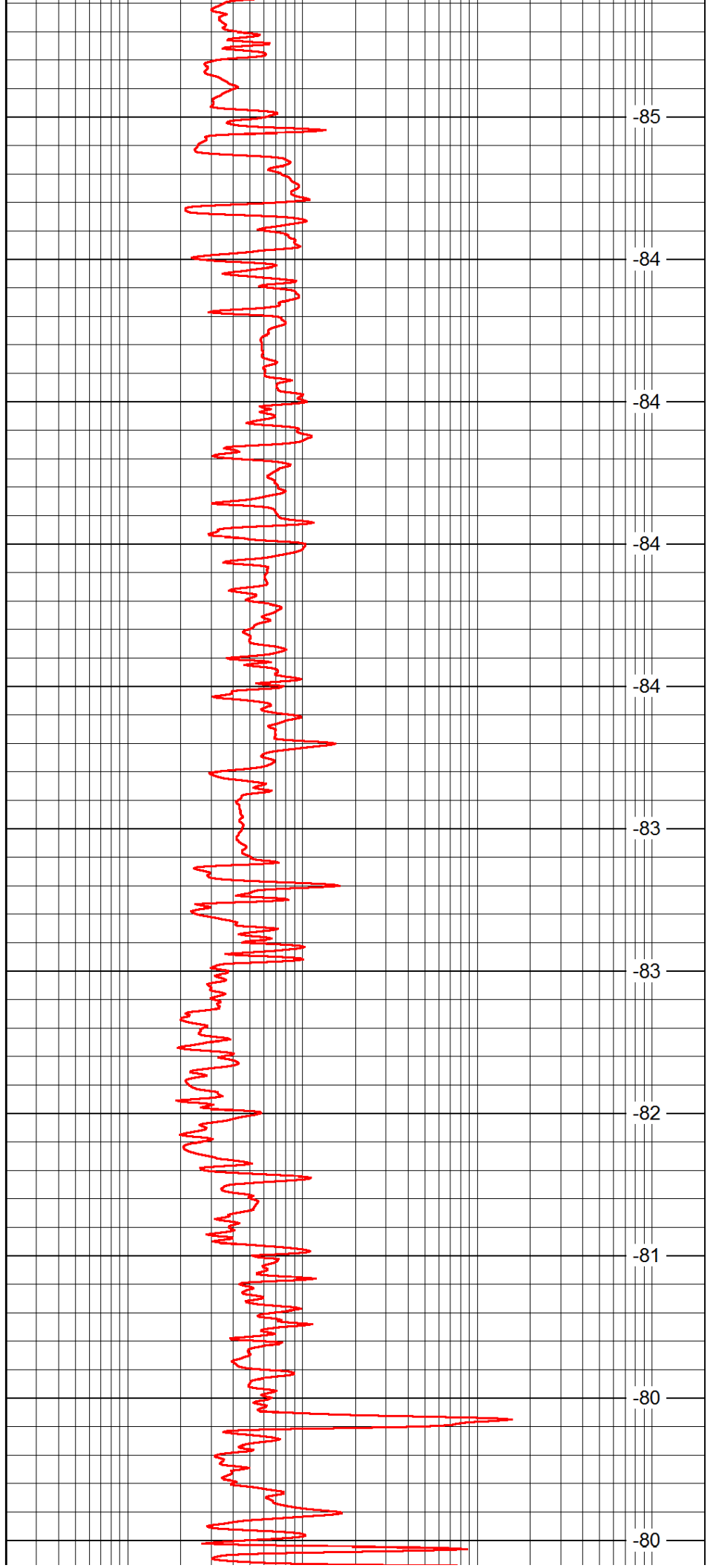
2800

2850

2900

2950

3000



-85

-84

-84

-84

-84

-83

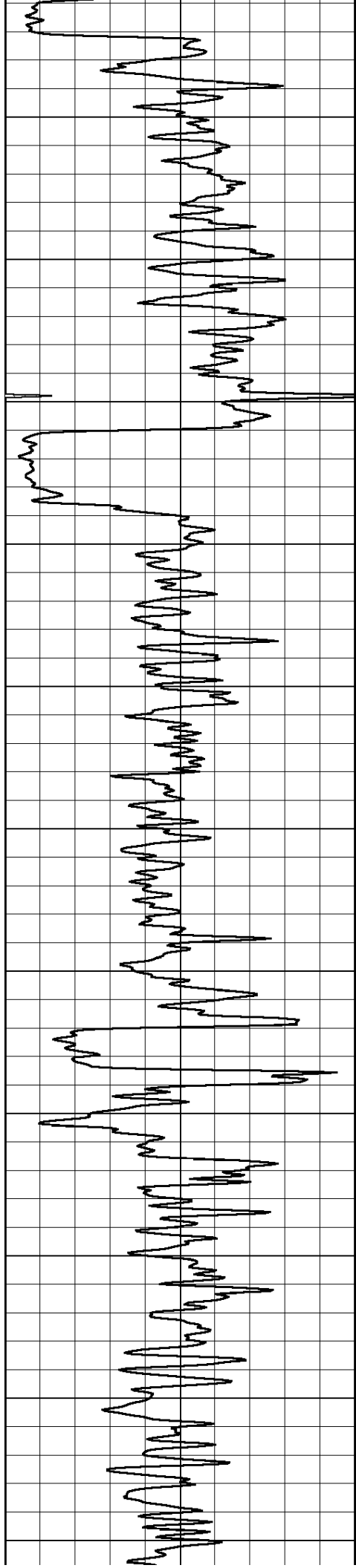
-83

-82

-81

-80

-80



3050

3100

3150

3200

3250

3300

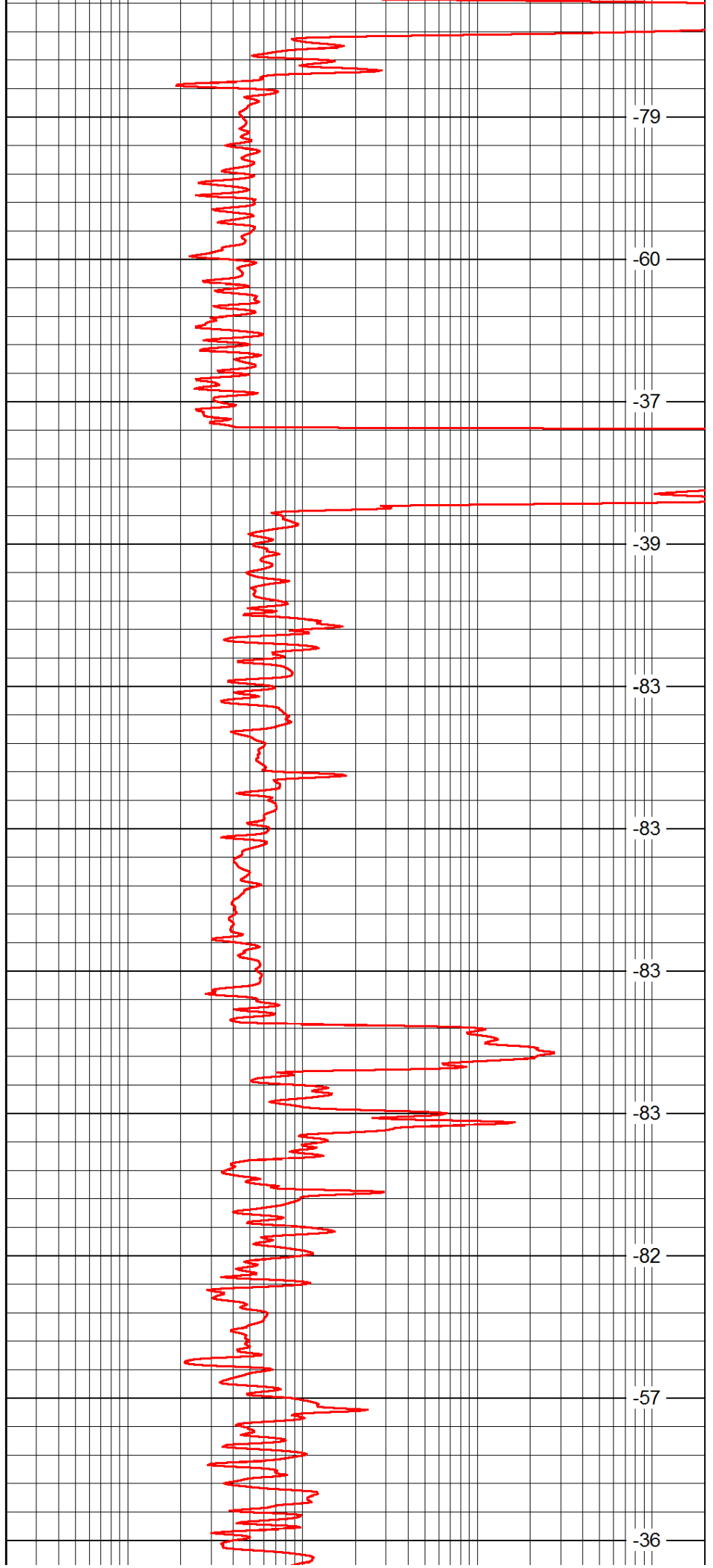
3350

3400

3450

3500

3550



-79

-60

-37

-39

-83

-83

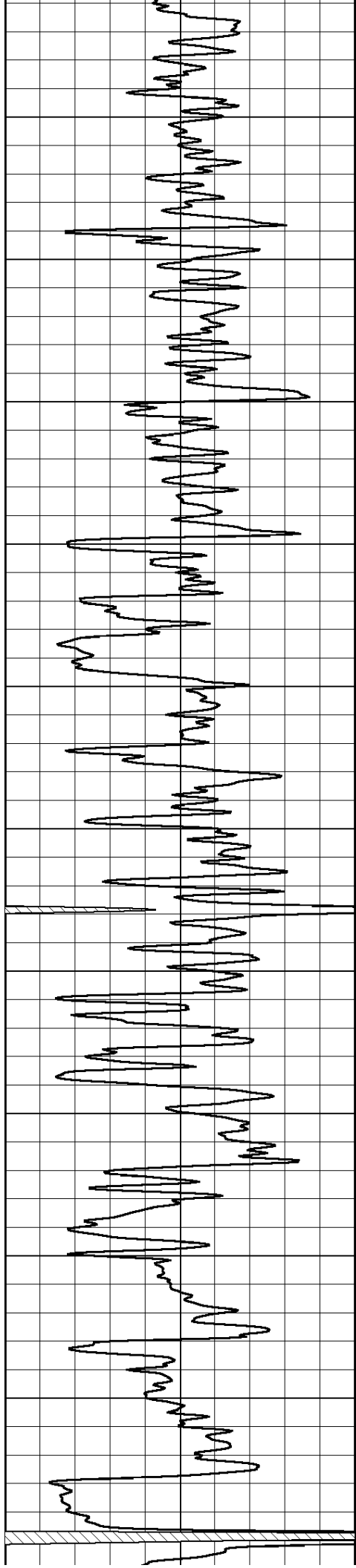
-83

-83

-82

-57

-36



3600

3650

3700

3750

3800

3850

3900

3950

4000

4050

4100

-36

-36

-36

-36

-36

-35

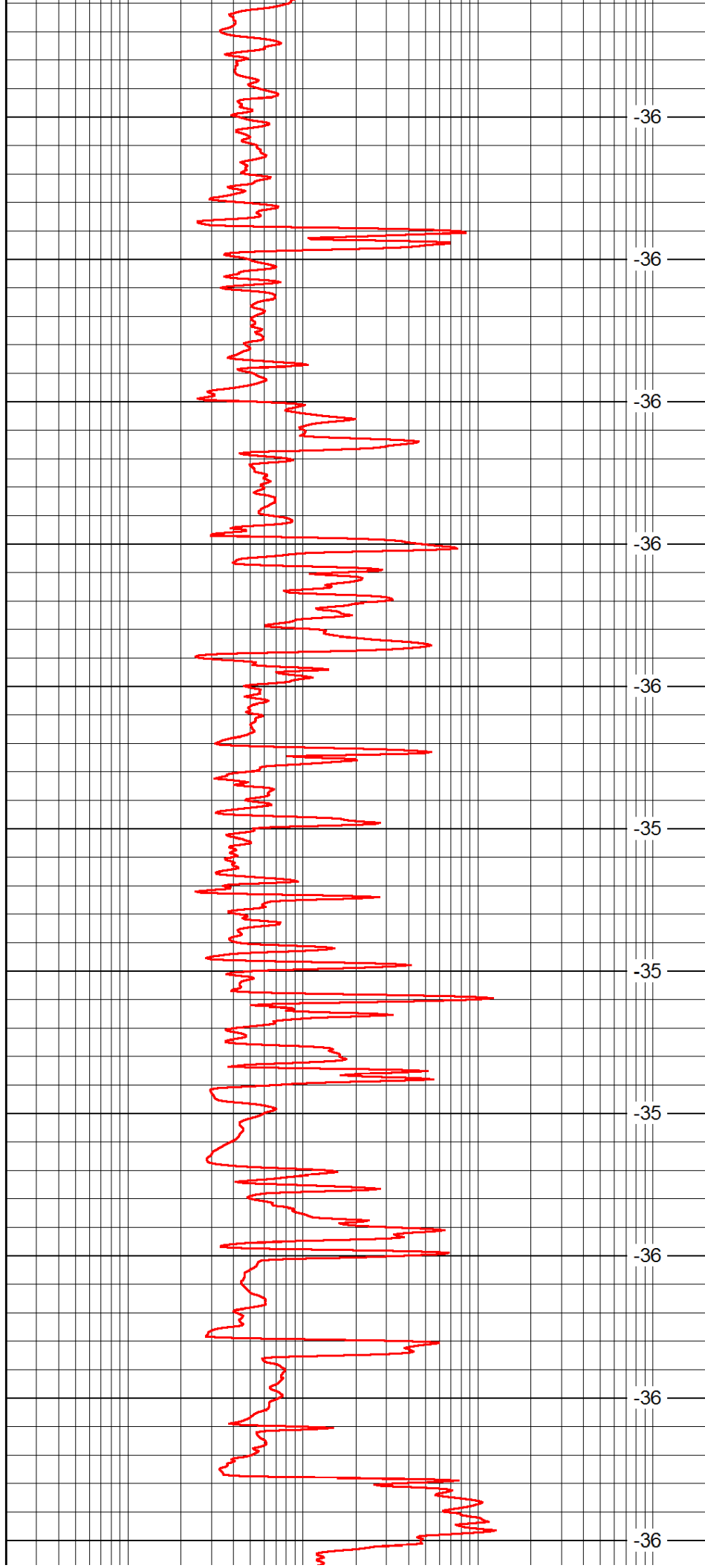
-35

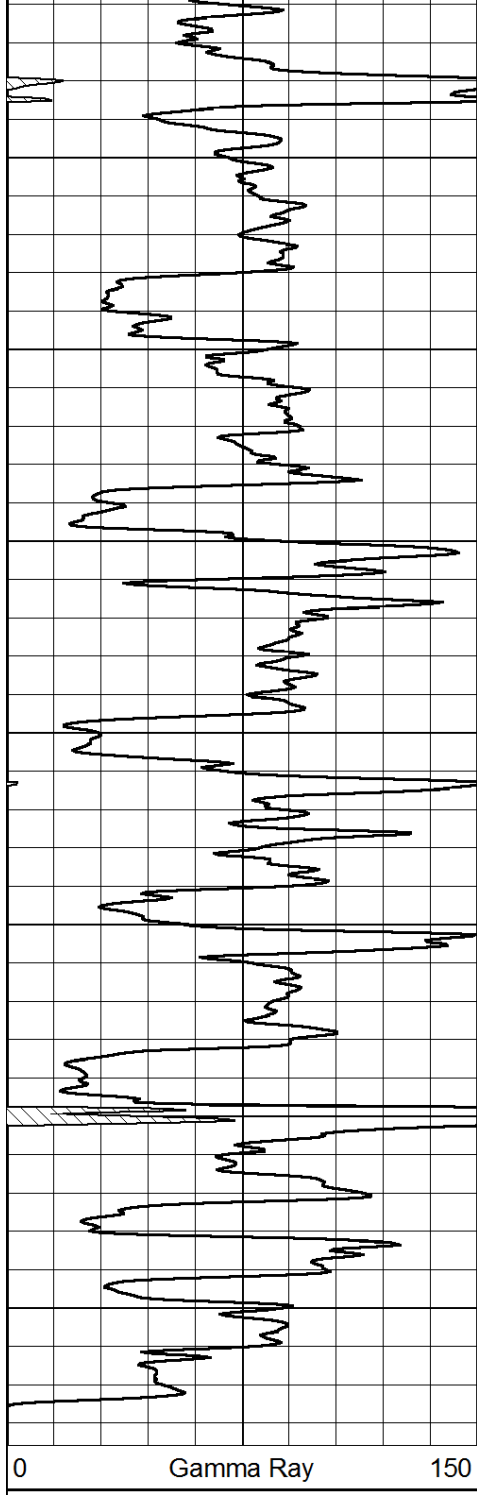
-35

-36

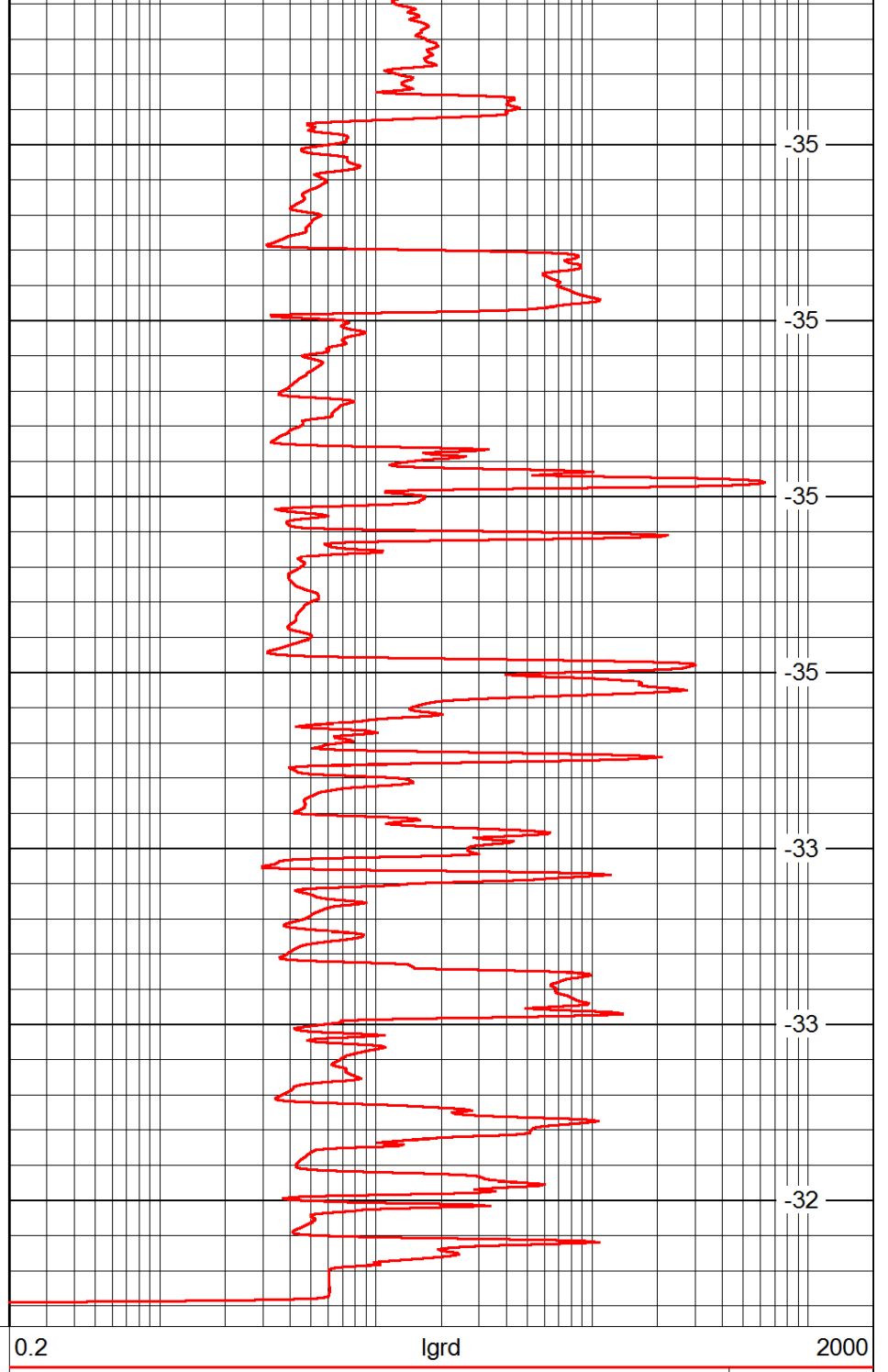
-36

-36





4150
4200
4250
4300
4350
4400
4450



-35
-35
-35
-35
-33
-33
-32

0 Gamma Ray 150

0.2 lgrd 2000

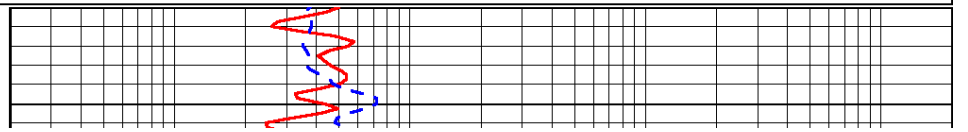
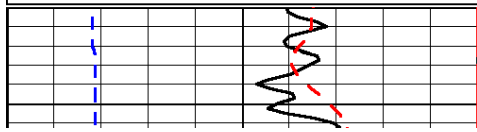
LSPD

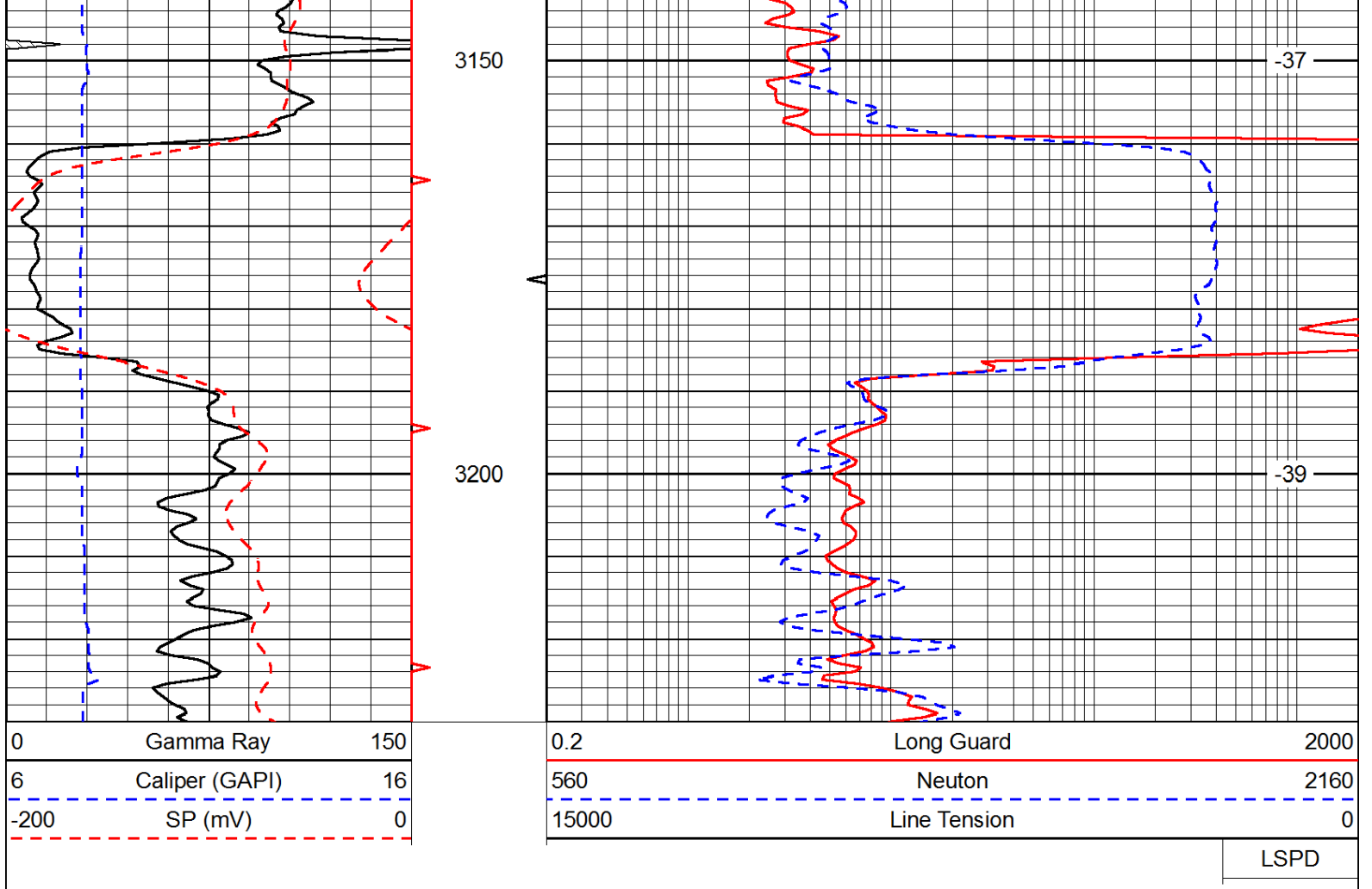
Database File: c:\warrior\data\berexco_michael #8-22\berexco_041714hd.db
 Dataset Pathname: rag/brxrag
 Presentation Format: rag
 Dataset Creation: Thu Apr 17 07:21:42 2014
 Charted by: Depth in Feet scaled 1:240

0	Gamma Ray	150
6	Caliper (GAPI)	16
-200	SP (mV)	0

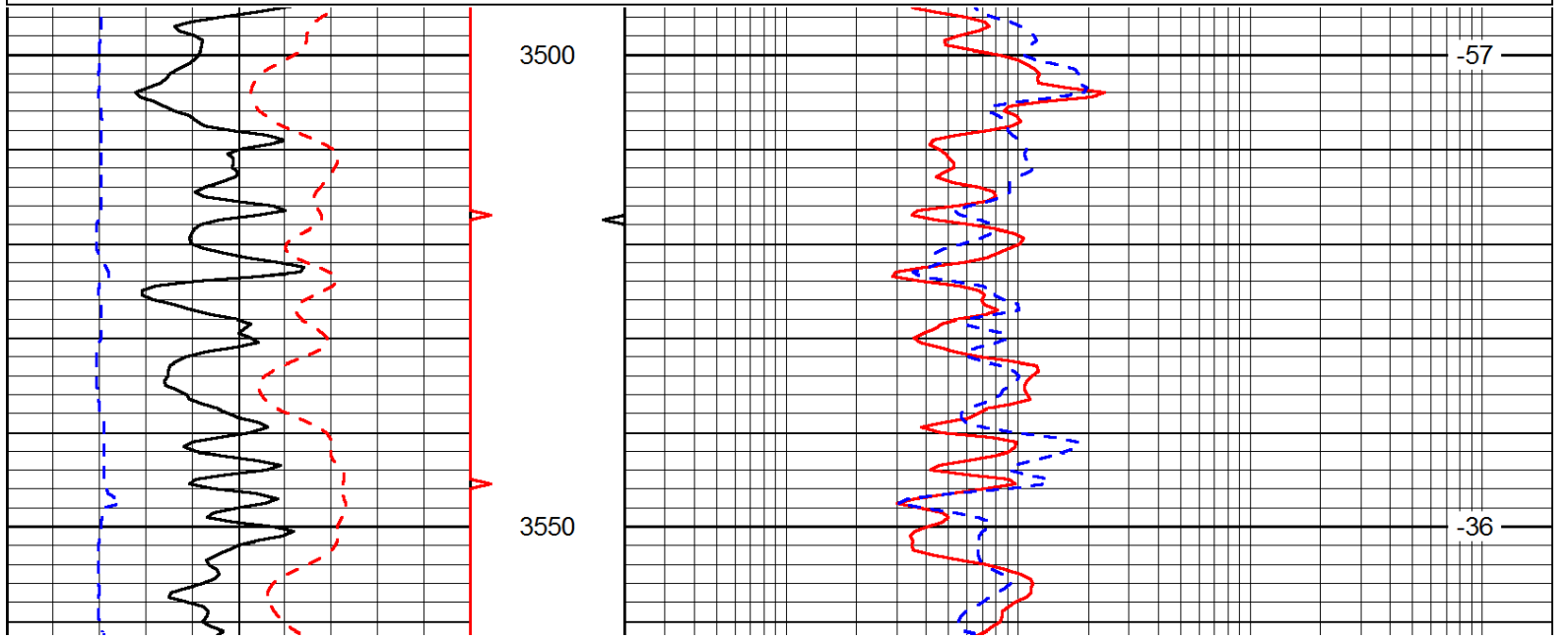
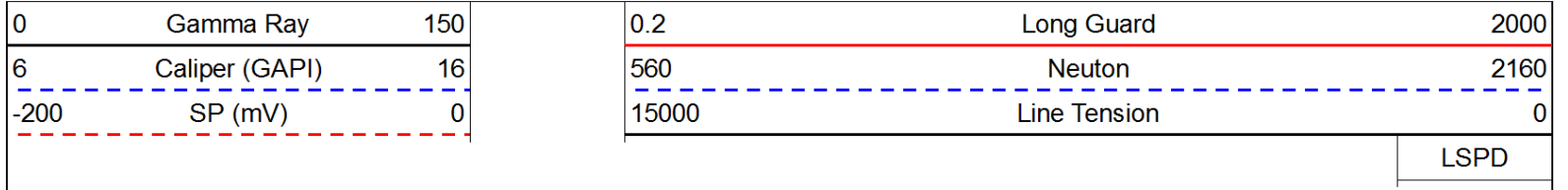
0.2	Long Guard	2000
560	Neuton	2160
15000	Line Tension	0

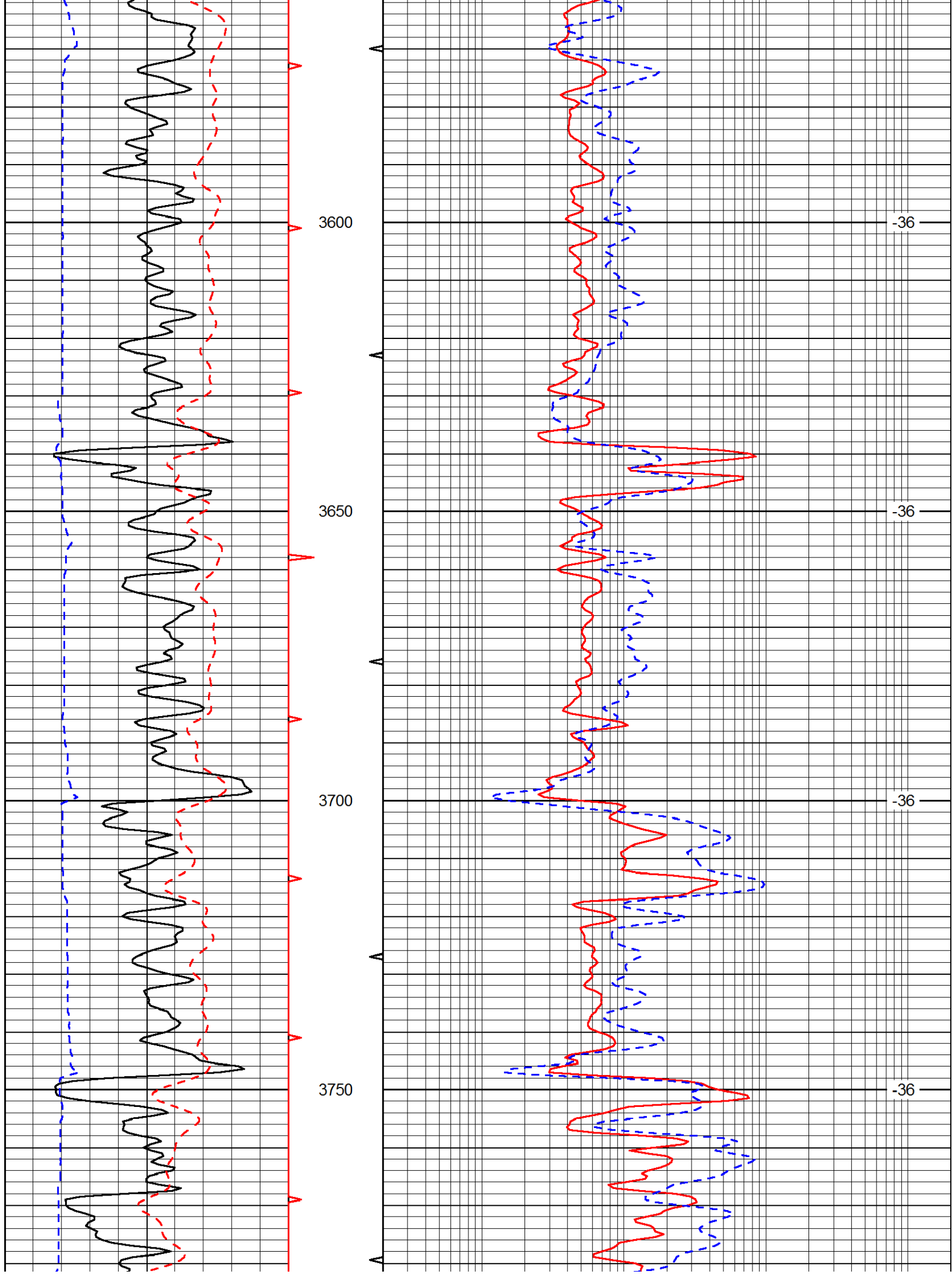
LSPD

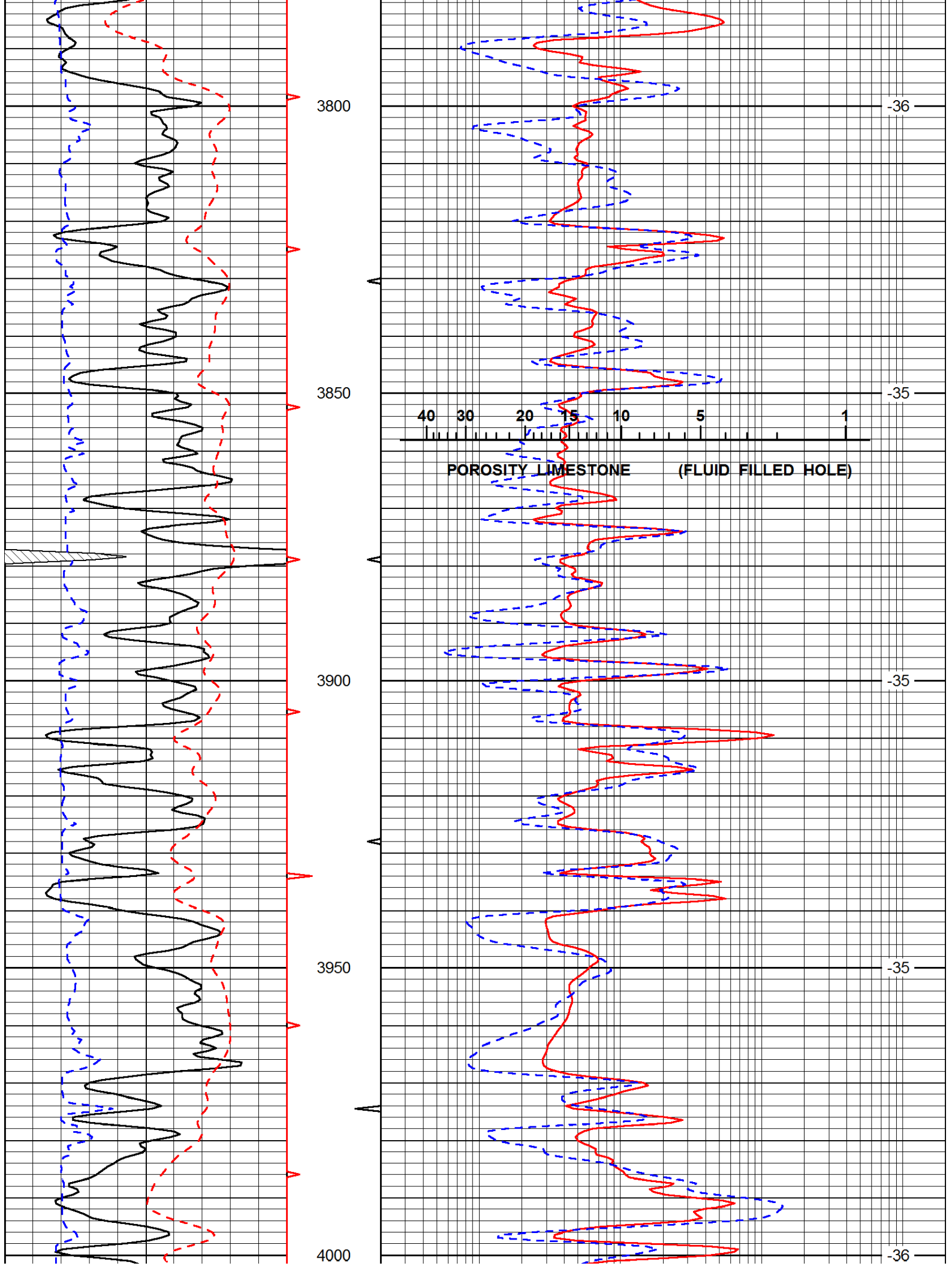


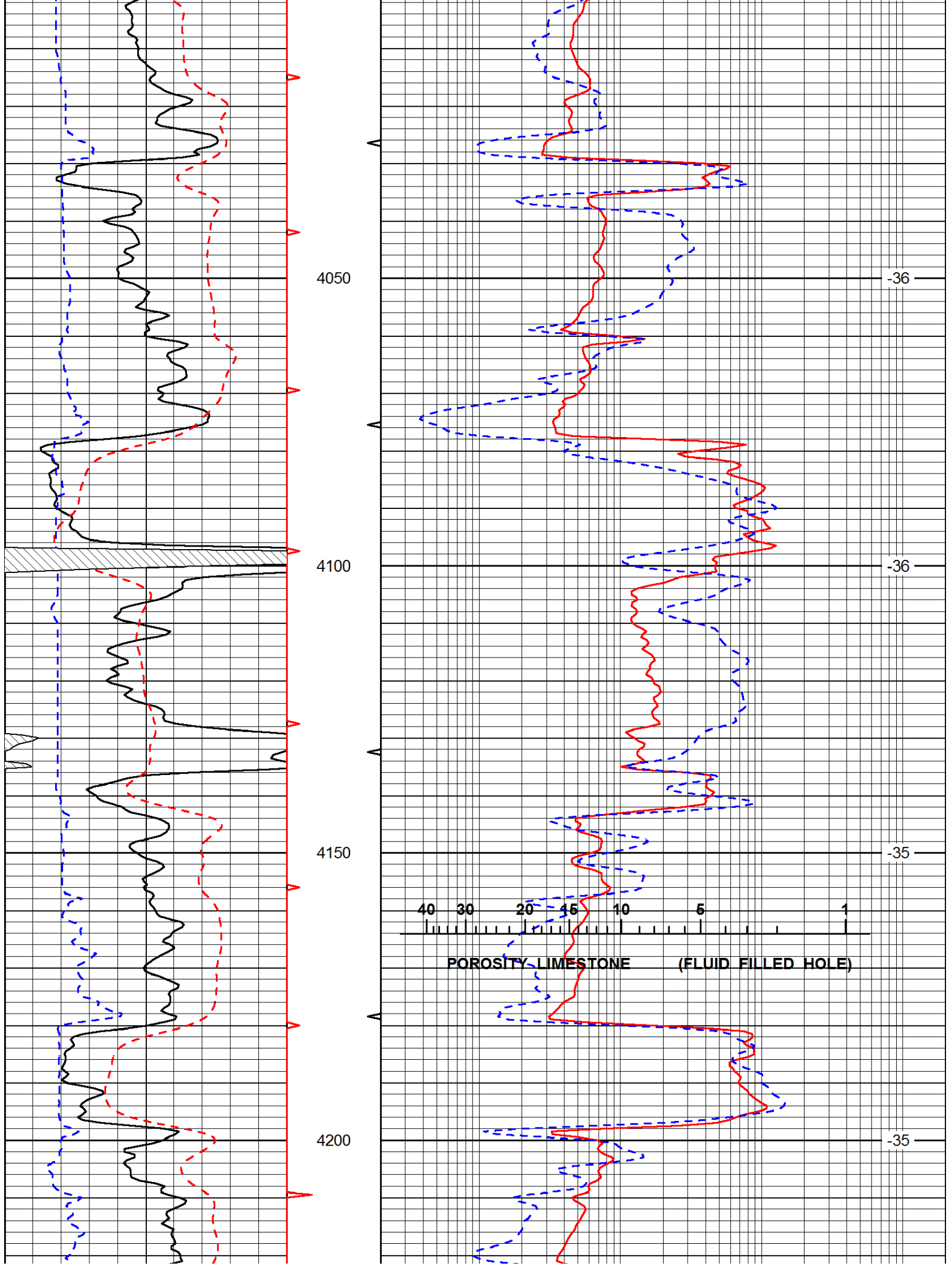


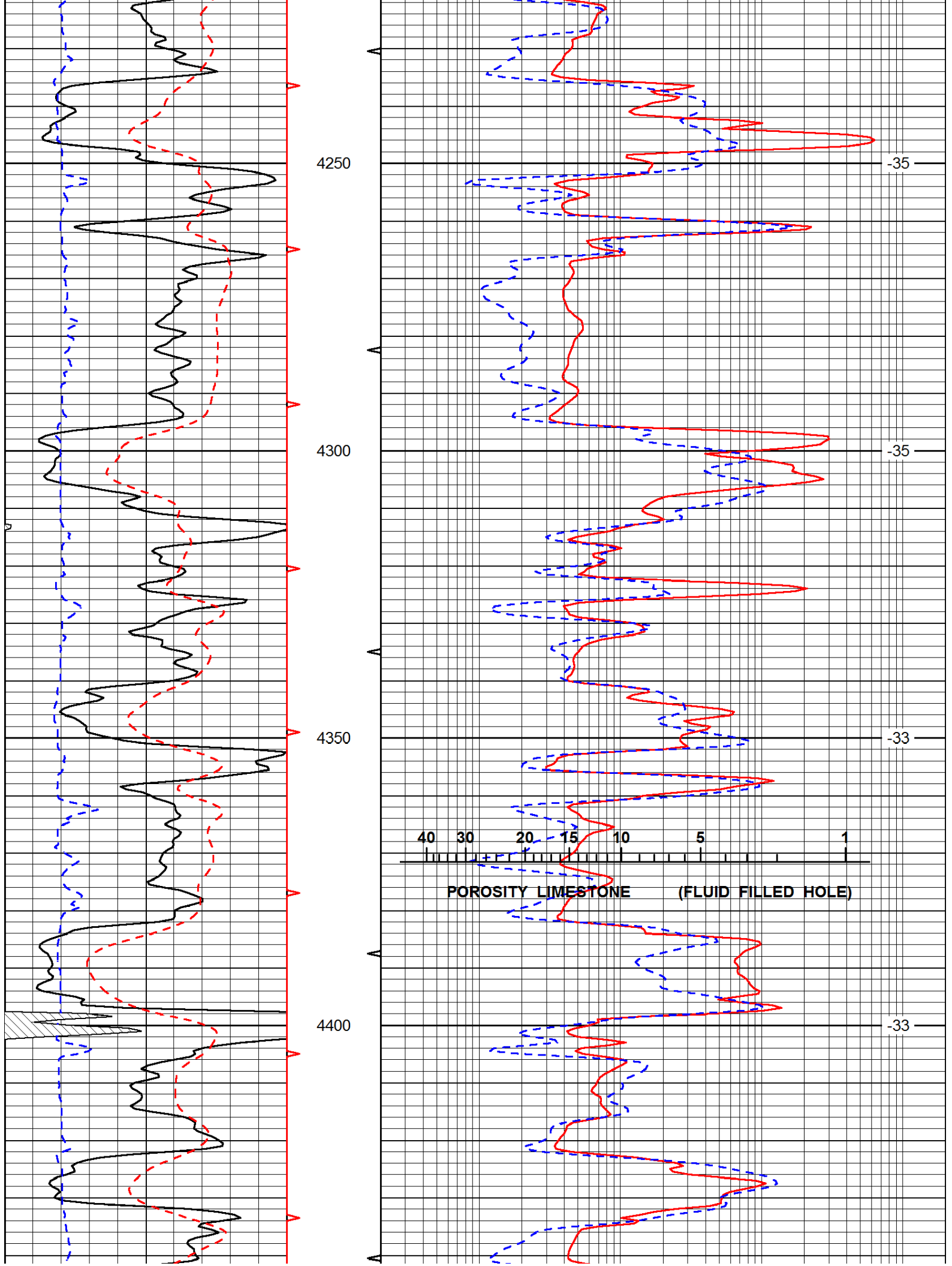
Database File: c:\warrior\data\berexco_michael #8-22\berexco_041714hd.db
 Dataset Pathname: rag/brxrag
 Presentation Format: rag
 Dataset Creation: Thu Apr 17 07:21:42 2014
 Charted by: Depth in Feet scaled 1:240

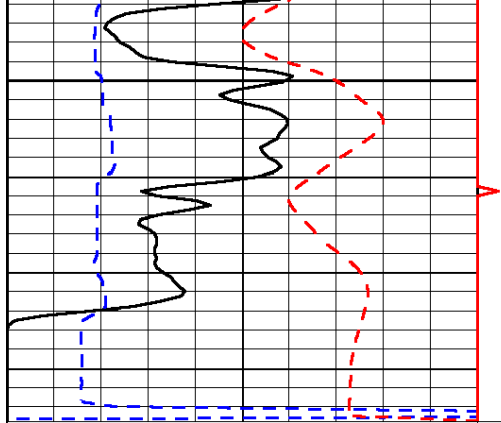






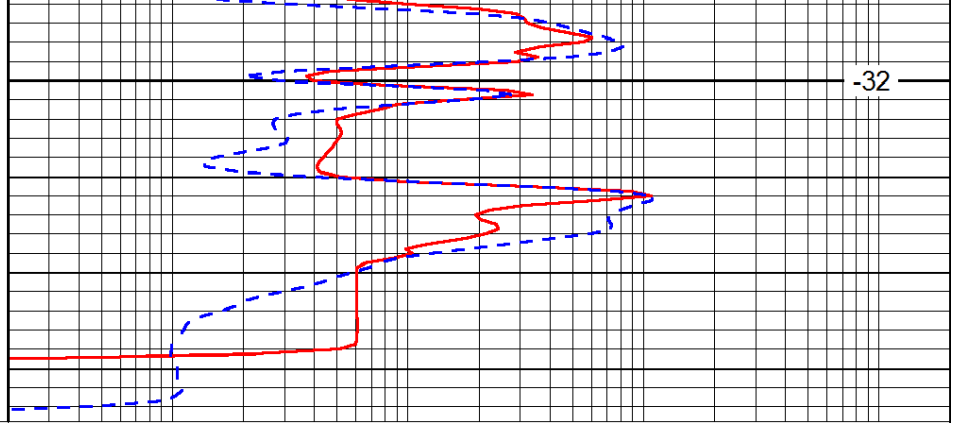






4450

0	Gamma Ray	150
6	Caliper (GAPI)	16
-200	SP (mV)	0



-32

0.2	Long Guard	2000
560	Neuton	2160
15000	Line Tension	0

LSPD