



Pioneer Energy Services

# Microresistivity Log

15-153-21002-00-00

API No.

Company **Berexco, LLC**  
 Well **Michael #8-22**  
 Field **East Fork**  
 County **Rawlins** State **Kansas**

Location **990' FNL & 330' FEL**

Other Services  
**RAG**

Sec: **22** Twp: **1S** Rge: **36W**

Permanent Datum **Ground Level** Elevation **3243**  
 Log Measured From **Kelly Bushing** 13 Ft. Above Perm. Datum  
 Drilling Measured From **Kelly Bushing**

Elevation  
 K.B. 3256  
 D.F. 3243  
 G.L. 3243

Date	4/17/2014
Run Number	Two
Depth Driller	4480
Depth Logger	4478
Bottom Logged Interval	4477
Top Log Interval	3500
Casing Driller	8.625 @ 314
Casing Logger	306
Bit Size	7.875
Type Fluid in Hole	Chemical
Salinity, ppm CL	700
Density / Viscosity	9.4 64
pH / Fluid Loss	9.0 6.8
Source of Sample	Flowline
Rm @ Meas. Temp	0.55 @ 40
Rmf @ Meas. Temp	0.41 @ 40
Rmc @ Meas. Temp	0.74 @ 40
Source of Rmf / Rmc	Charts
Rm @ BHT	0.18 @ 123
Operating Rig Time	3 Hours
Max Rec. Temp. F	123
Equipment Number	91
Location	Hays
Recorded By	D. Schmidt
Witnessed By	Pete Vollmer

<<< Fold Here >>>

All interpretations are opinions based on inferences from electrical or other measurements and we cannot and do not guarantee the accuracy or correctness of any interpretation, and we shall not, except in the case of gross or willful negligence on our part, be liable or responsible for any loss, costs, damages, or expenses incurred or sustained by anyone resulting from any interpretation made by any of our officers, agents or employees. These interpretations are also subject to our general terms and conditions set out in our current Price Schedule.

### Comments

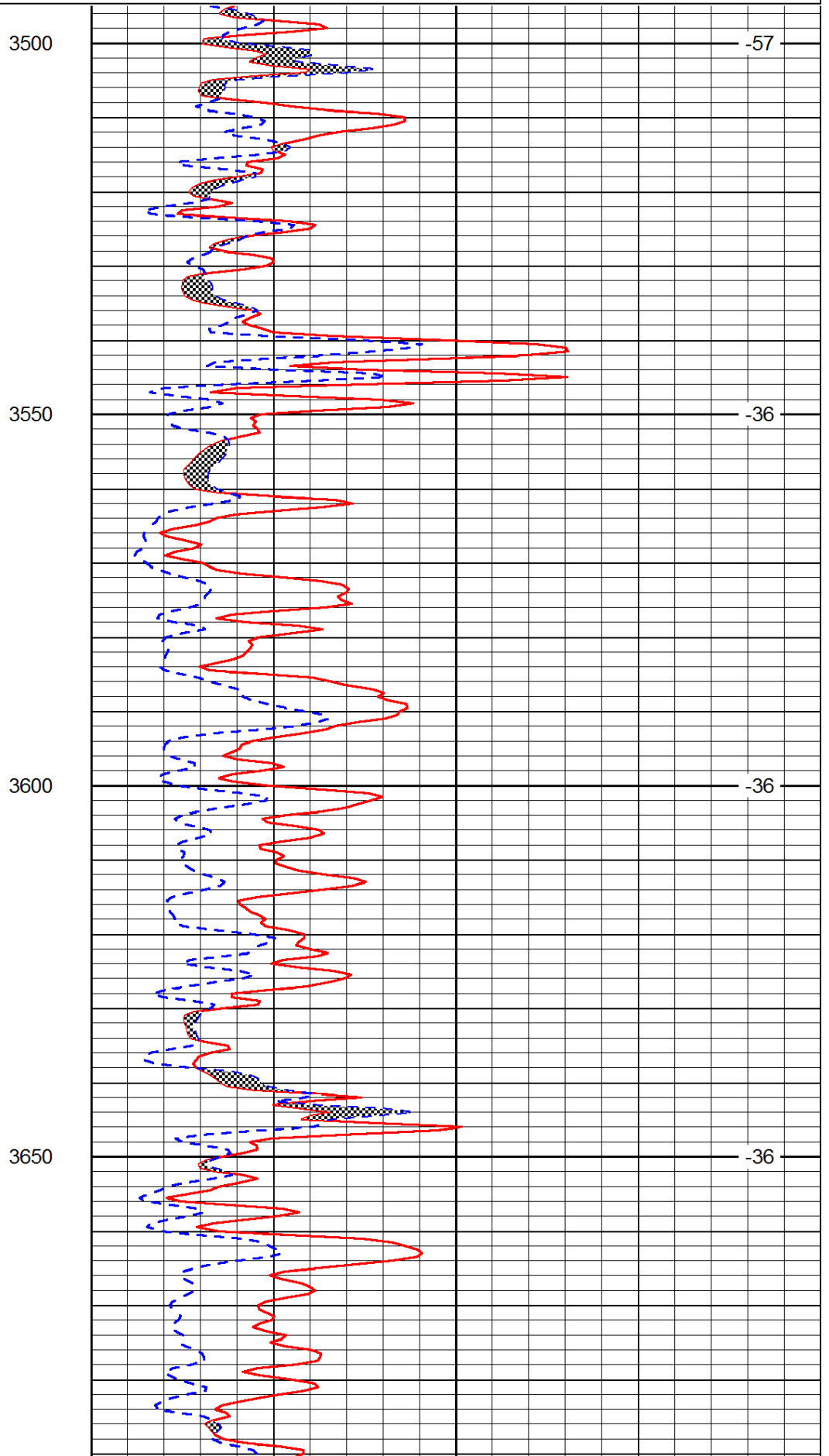
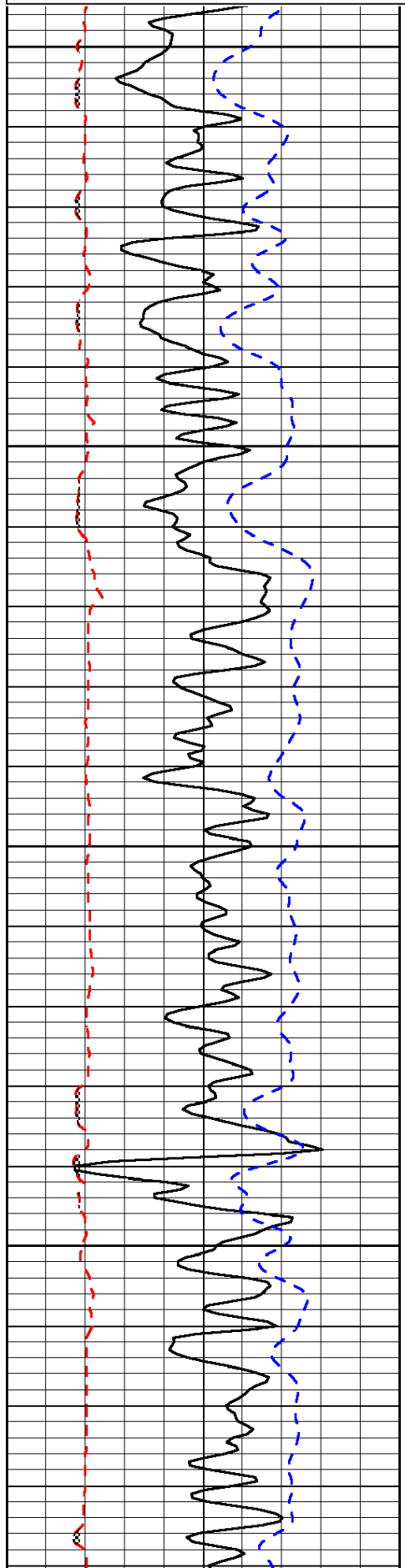
Thank you for using Pioneer Energy Services  
 www.pioneerres.com  
 785 625 3858  
 Beardsley,  
 North to AA Rd, West to 5.5 Rd, North to BB Rd,  
 1/2 West & South into

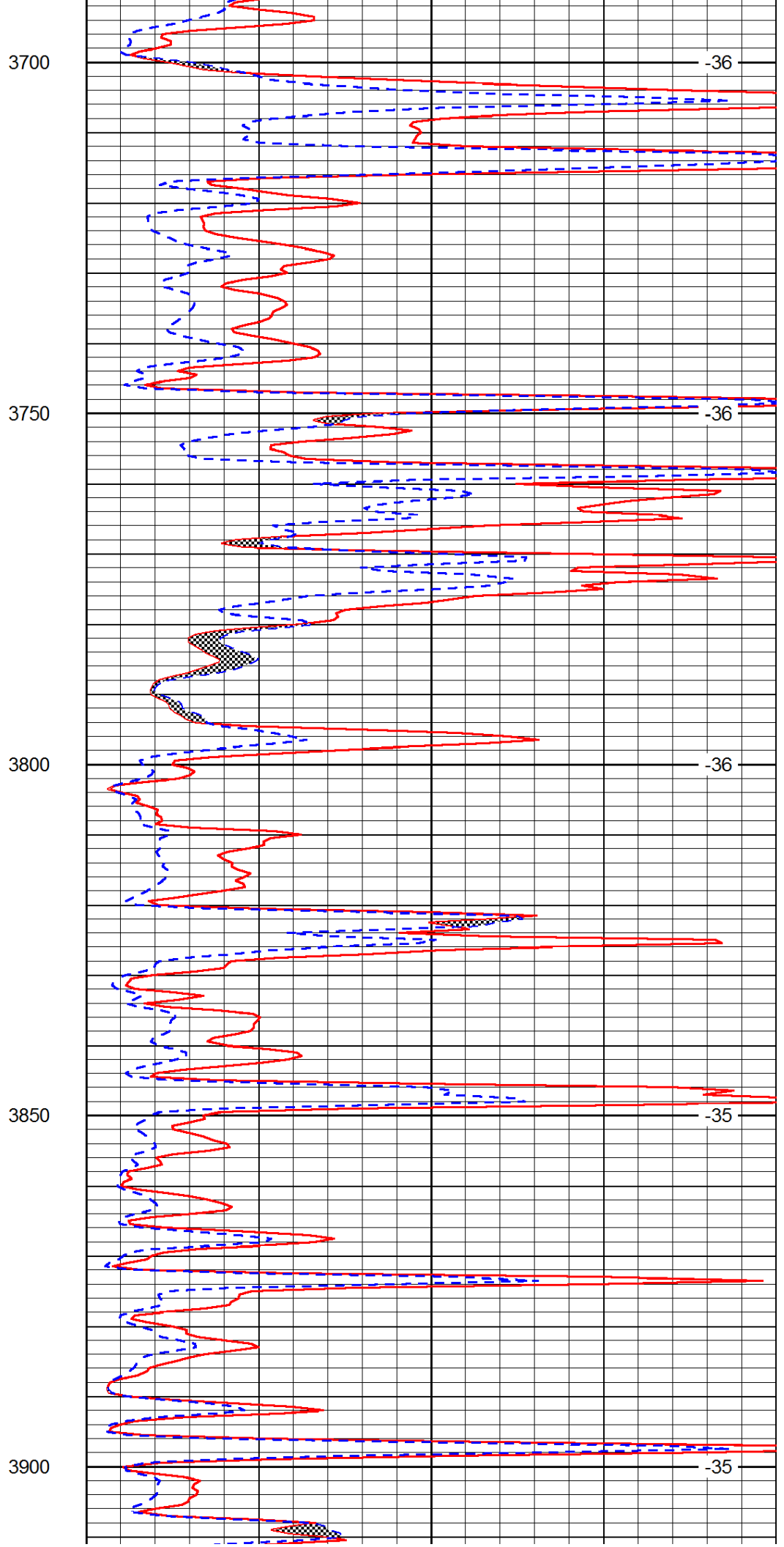
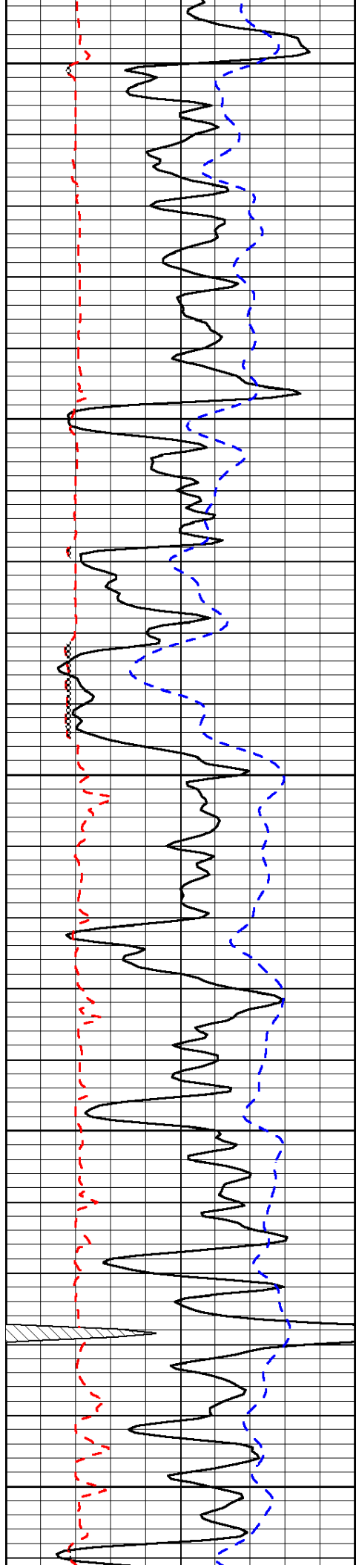
Database File: c:\warrior\data\berexco\_michael #8-22\berexco\_041714hd.db  
 Dataset Pathname: rag/brxrag  
 Presentation Format: micro  
 Dataset Creation: Thu Apr 17 07:21:42 2014  
 Charted by: Depth in Feet scaled 1:240

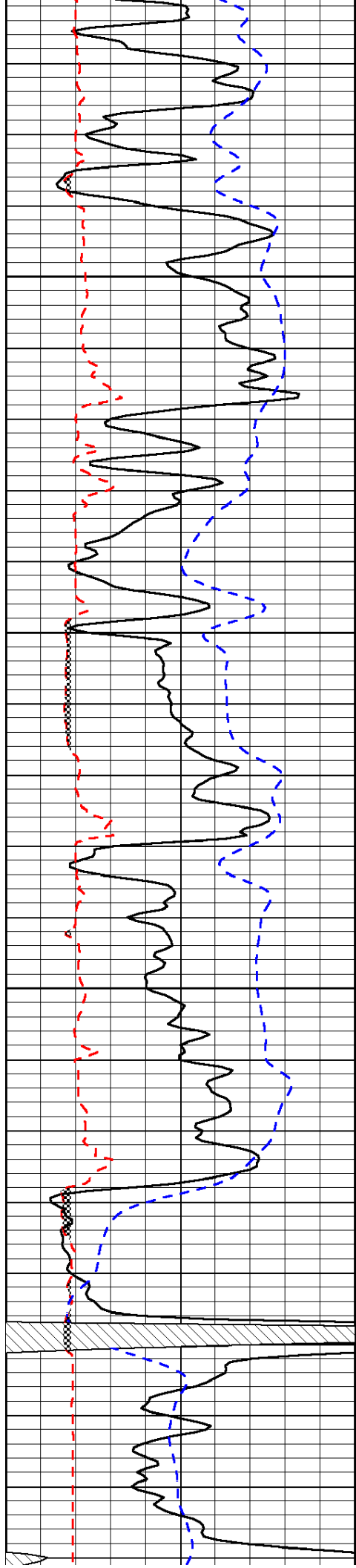
0	Gamma Ray	150
6	Micro Log Caliper (GAPI)	16
-200	SP (mV)	0

0	Micro Inverse 1 X 1	40
0	Micro Normal 2"	40
15000	Line Weight	0

LSPD





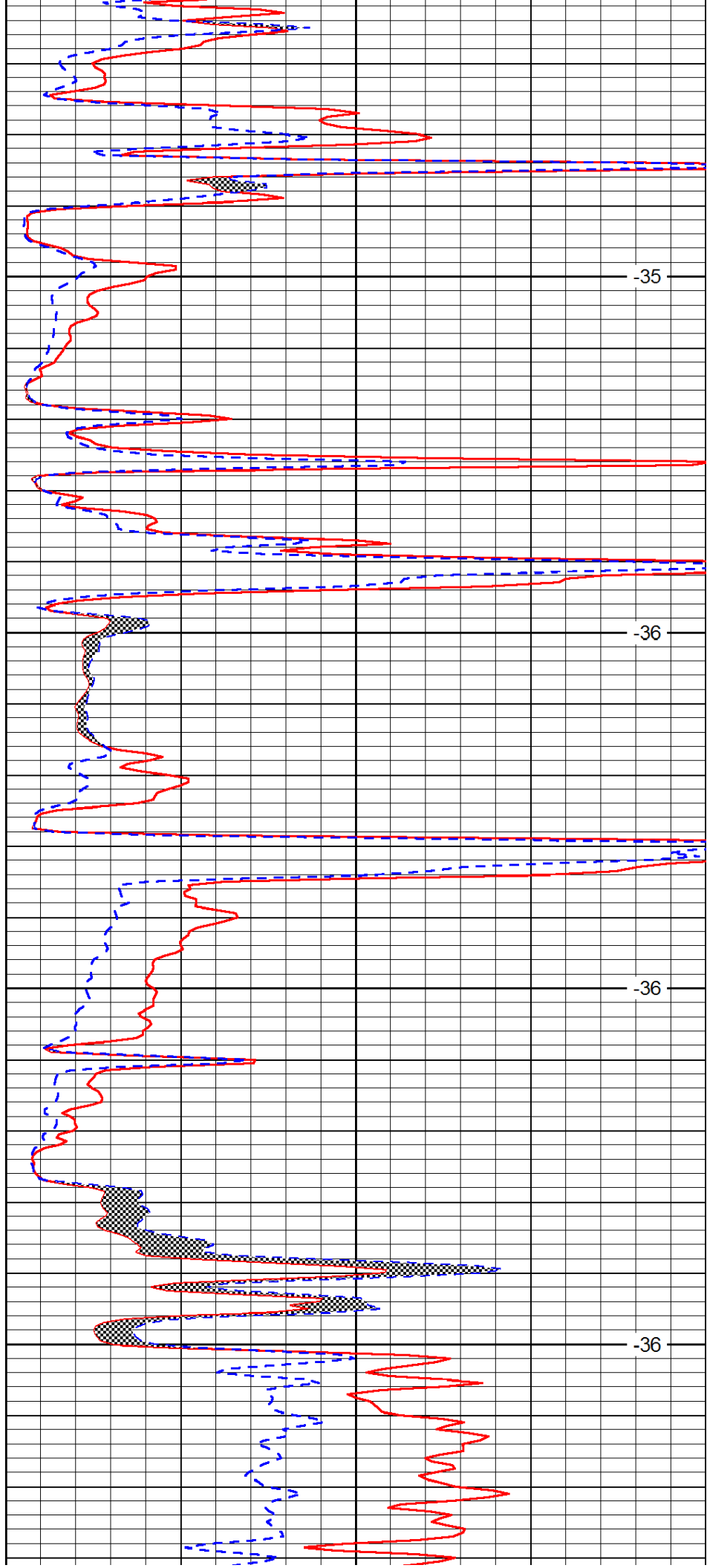


3950

4000

4050

4100

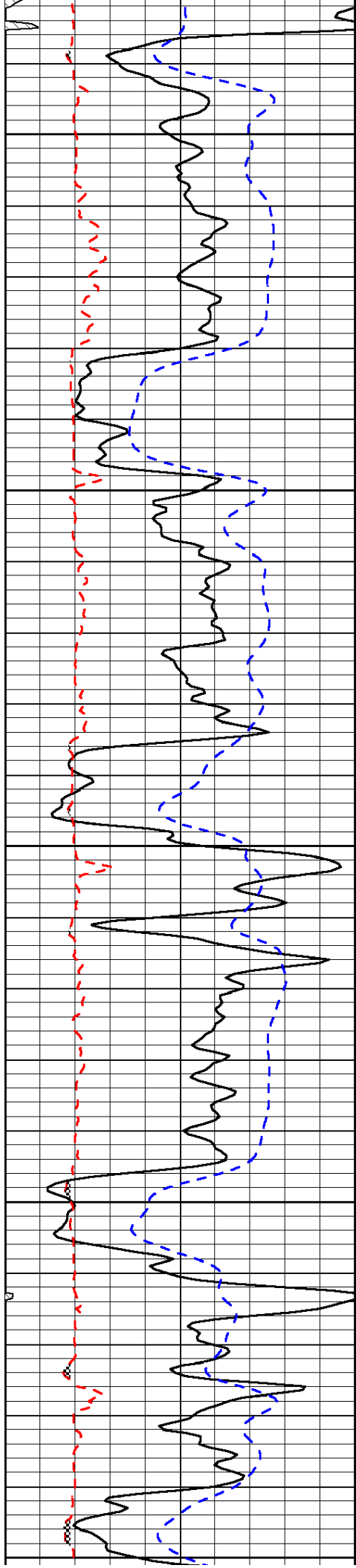


-35

-36

-36

-36



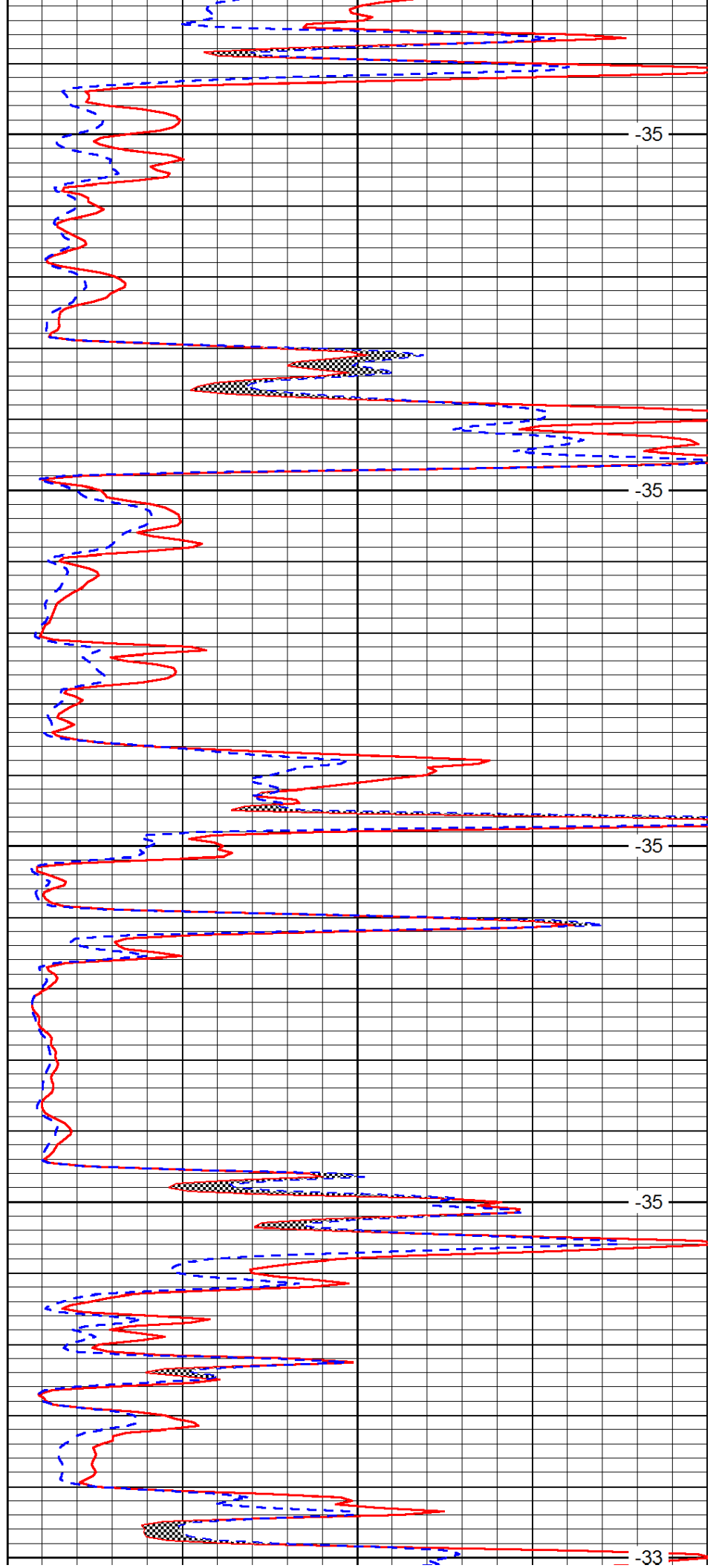
4150

4200

4250

4300

4350



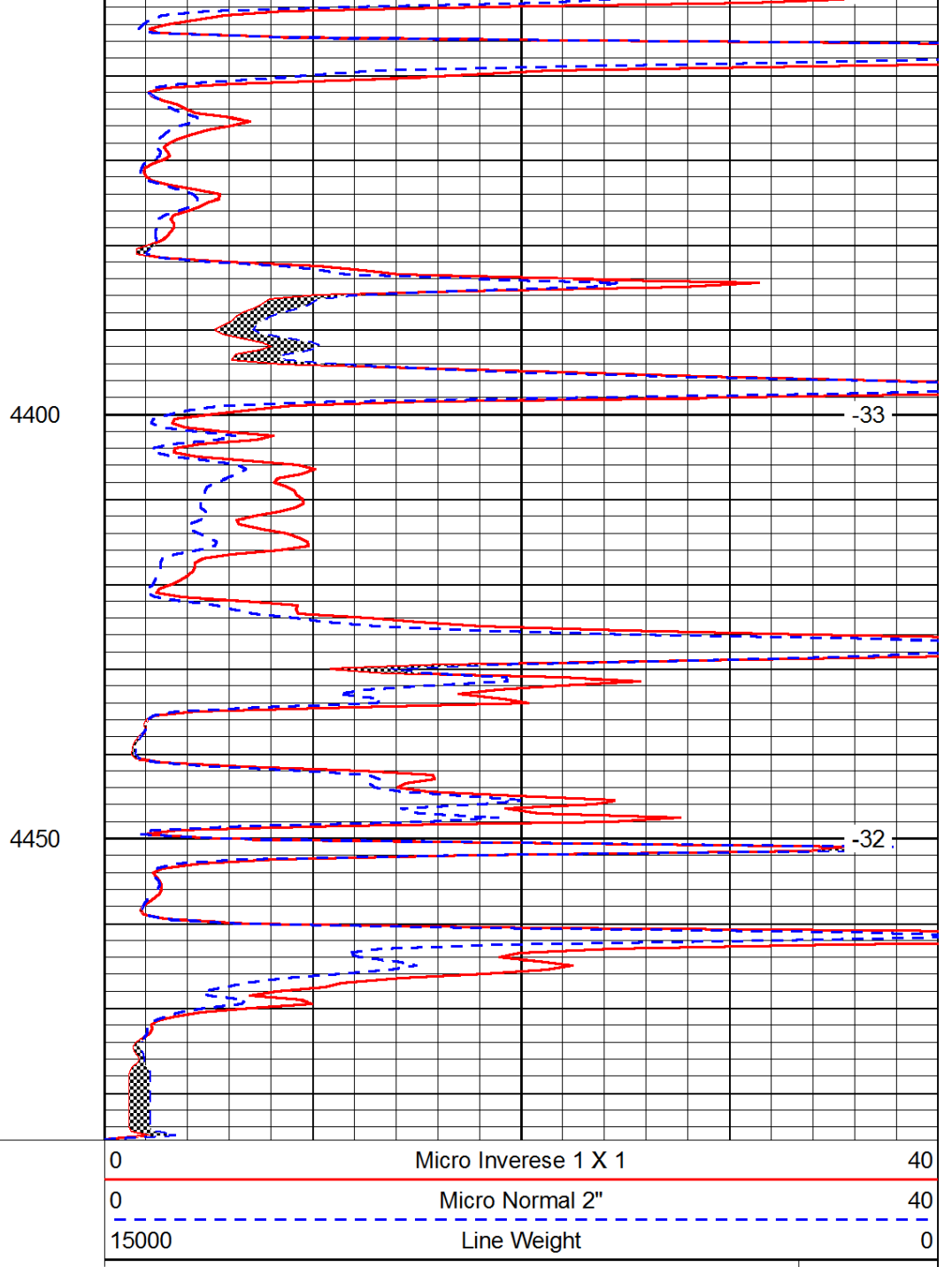
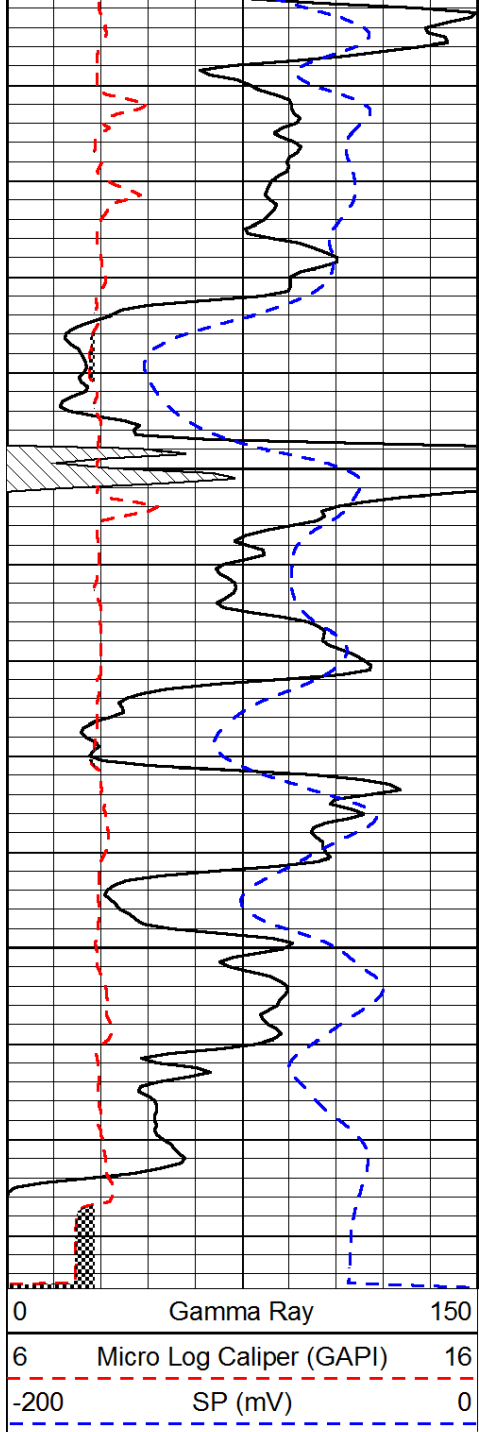
-35

-35

-35

-35

-33



LSPD