



Pioneer Energy Services

Dual Compensated Porosity Log

15-051-26,685-00-00

API No.

Company **Hess Oil Company**
 Well **Brull Farms #1**
 Field **Sack**
 County **Ellis** State **Kansas**

Location **335' FNL & 2294' FEL**
 Sec: **25** Twp: **13S** Rge: **9W**

Other Services
DIL

Permanent Datum **Ground Level** Elevation **2019**
 Log Measured From **Kelly Bushing** **5** Ft. Above Perm. Datum
 Drilling Measured From **Kelly Bushing**

Elevation
K.B. 2024
D.F.
G.L. 2019

Date **4/19/2014**
 Run Number **One**
 Type Log **CNL / CDL**
 Depth Driller **3672**
 Depth Logger **3668**
 Bottom Logged Interval **3647**
 Top Logged Interval **2800**
 Type Fluid In Hole **Chemical**
 Salinity, PPM CL **5,200**
 Density **8.9**
 Level **Full**
 Max. Rec. Temp. F **113**
 Operating Rig Time **2 Hours**
 Equipment -- Location **17 Hays**
 Recorded By **C. Desaire**
 Witnessed By **David Gould**

Borehole Record

Run No.	Bit	From	To	Size	Wgt.	From	To
1	12.25	00	218	8.625	24#	00	218
2	7.875	218	3672				

Casing Record

<<< Fold Here >>>

All interpretations are opinions based on inferences from electrical or other measurements and we cannot and do not guarantee the accuracy or correctness of any interpretation, and we shall not, except in the case of gross or willful negligence on our part, be liable or responsible for any loss, costs, damages, or expenses incurred or sustained by anyone resulting from any interpretation made by any of our officers, agents or employees. These interpretations are also subject to our general terms and conditions set out in our current Price Schedule.

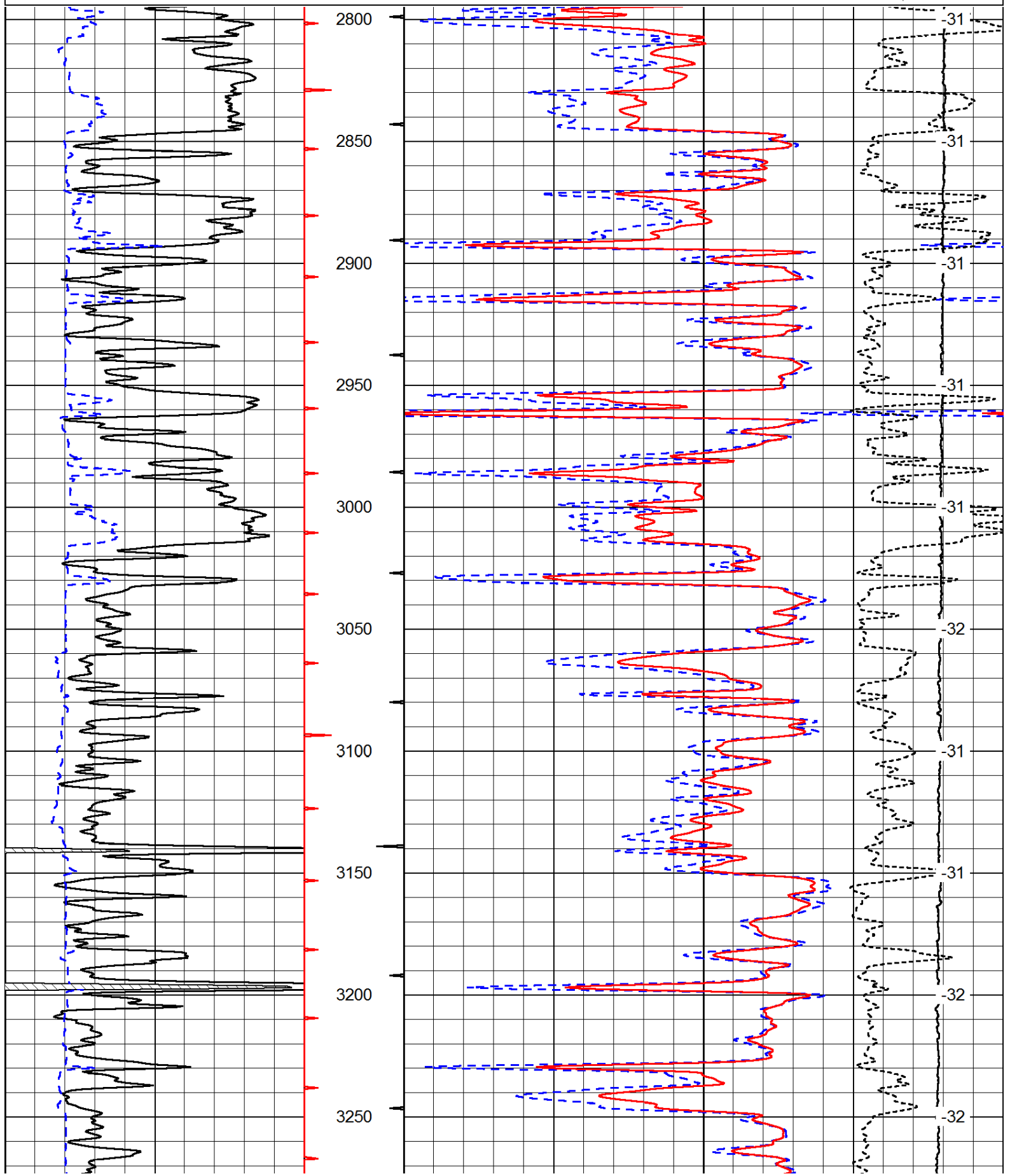
Comments

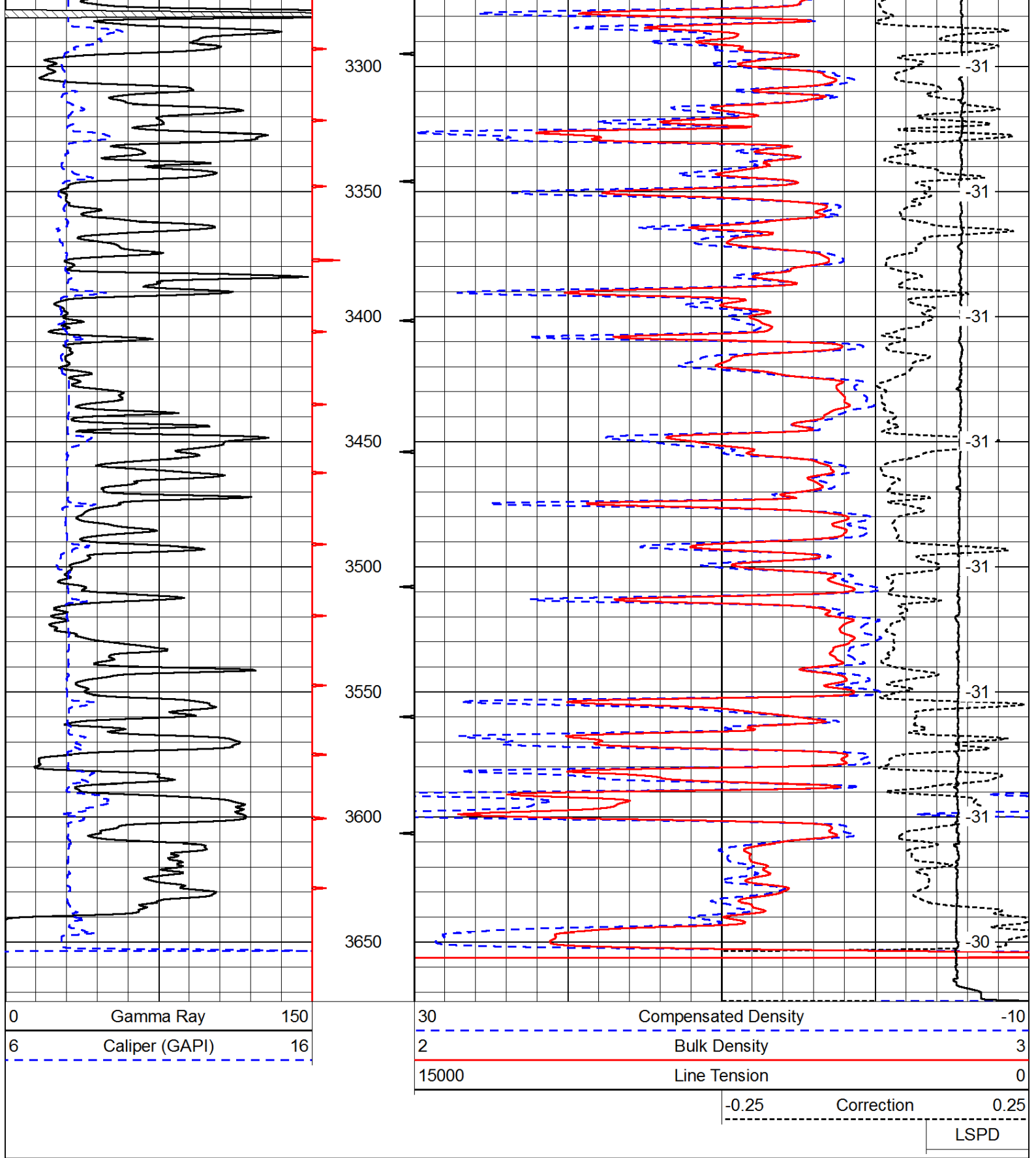
Thank you for using Pioneer Energy Services
www.pioneerenergy.com
 785 625 3858
 Hays KS, Hwy 183 Bypass and Noose Rd,
 1 1/2 W, N Into

Database File: c:\warrior\data\hess_brull farms #1\hesshd.db
 Dataset Pathname: dil/hessstk
 Presentation Format: cdl
 Dataset Creation: Sat Apr 19 20:39:41 2014
 Charted by: Depth in Feet scaled 1:600

0	Gamma Ray	150
6	Caliper (GAPI)	16

30	Compensated Density	-10
2	Bulk Density	3
15000	Line Tension	0
-0.25	Correction	0.25
LSPD		





Database File: c:\warrior\data\hess_brull farms #1\hesshd.db
 Dataset Pathname: dil/hessstk
 Presentation Format: cndlspec
 Dataset Creation: Sat Apr 19 20:39:41 2014
 Charted by: Depth in Feet scaled 1:240

0	Gamma Ray	150	30	Compensated Neutron (Limestone)	-10
6	Caliper (GAPI)	16	30	Compensated Density (Limestone)	-10

15000

Line Tension

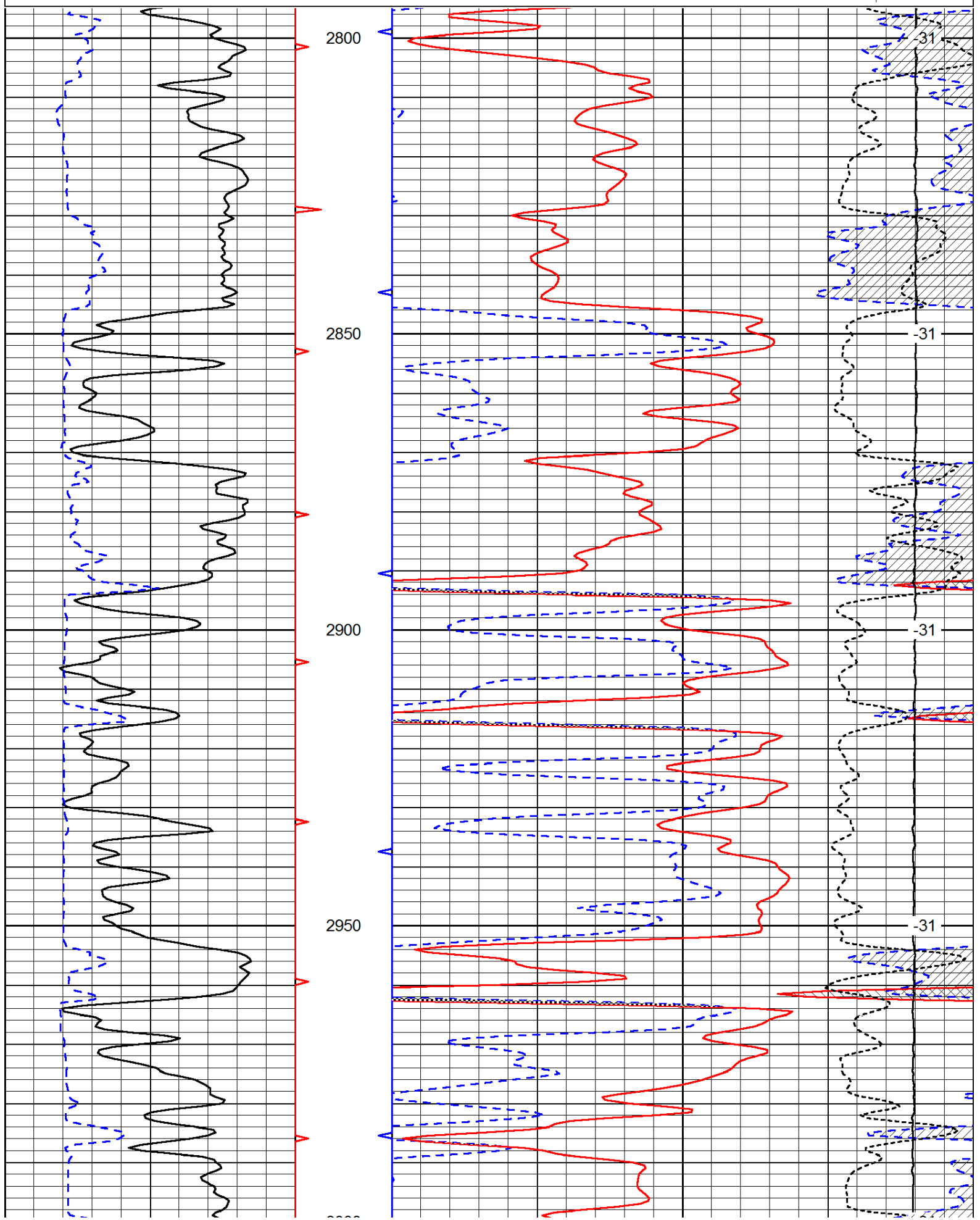
0

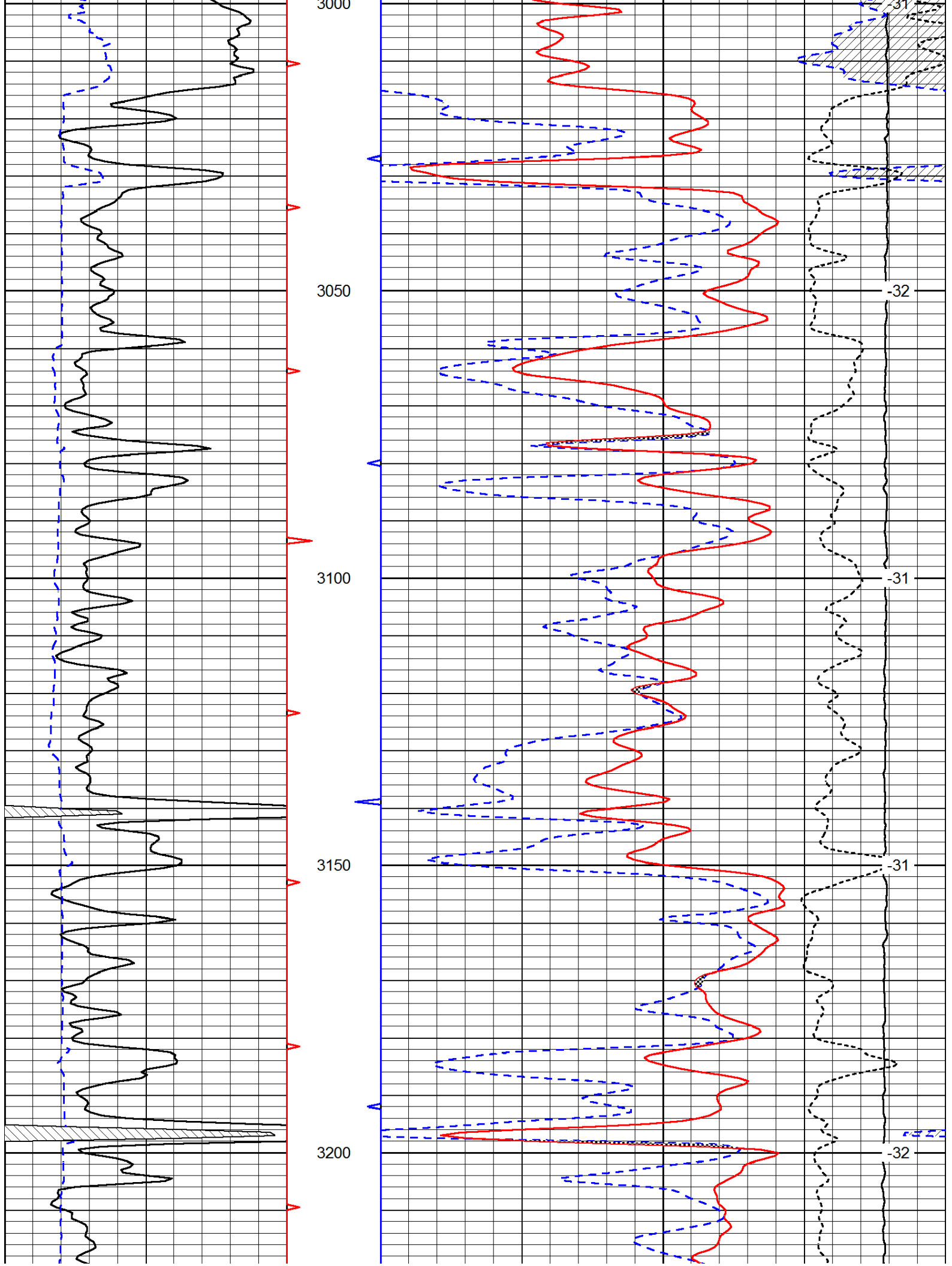
-0.25

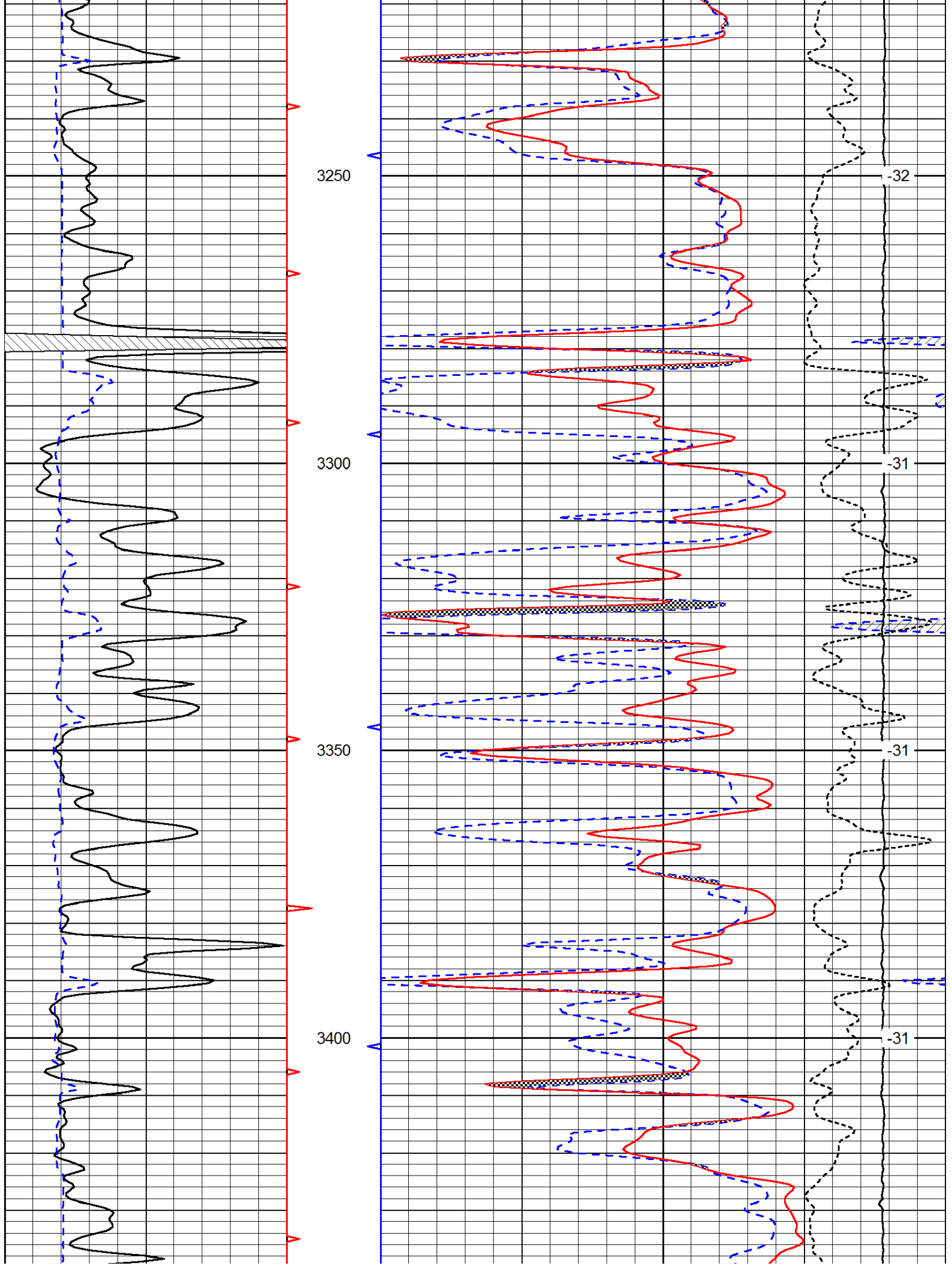
Correction

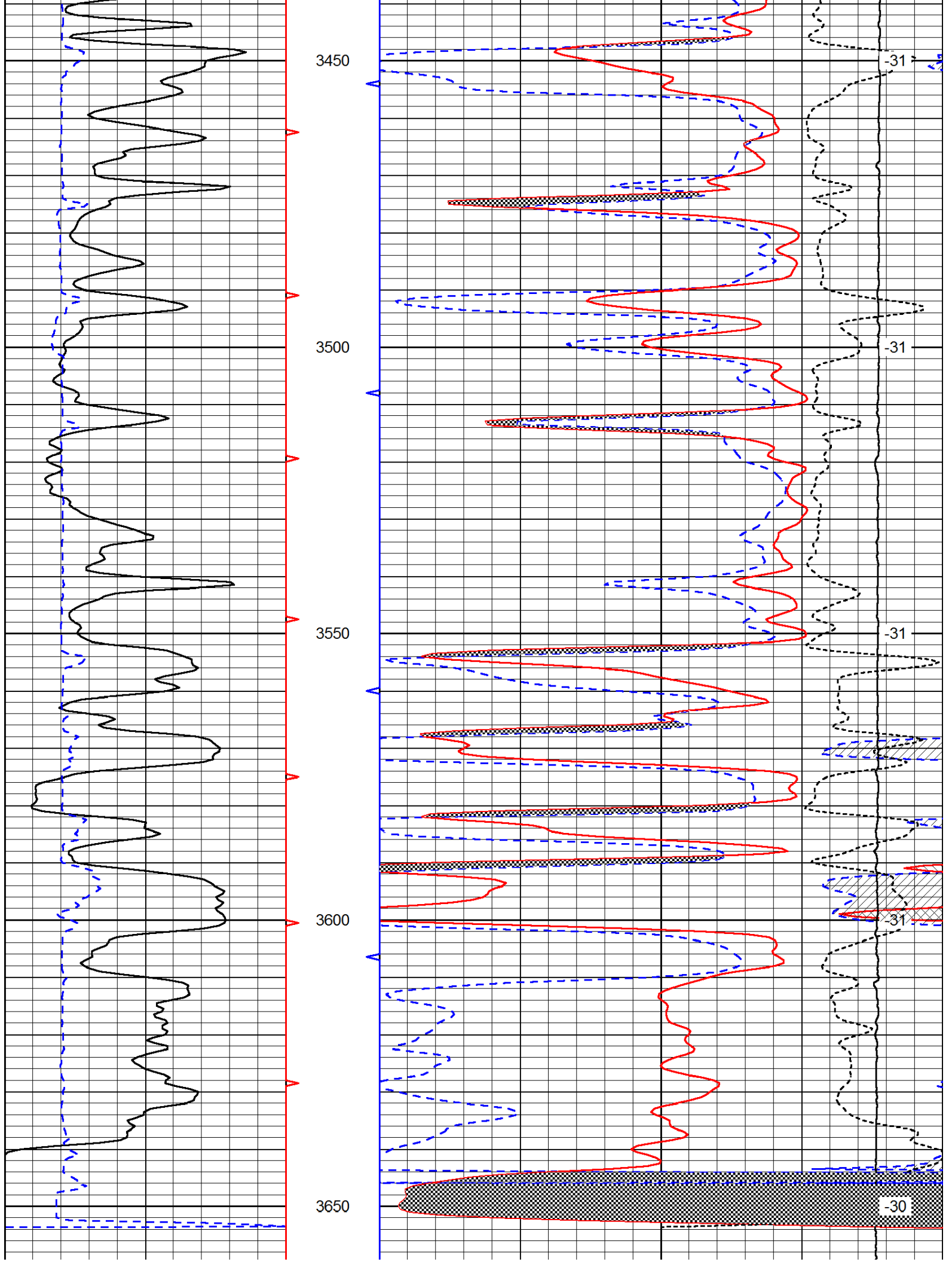
0.25

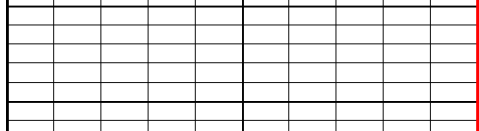
LSPD





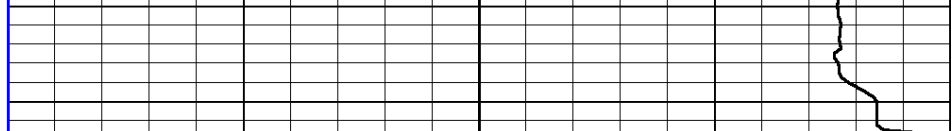






0	Gamma Ray	150
---	-----------	-----

6	Caliper (GAPI)	16
---	----------------	----



30	Compensated Neutron (Limestone)	-10
----	---------------------------------	-----

30	Compensated Density (Limestone)	-10
----	---------------------------------	-----

15000	Line Tension	0
-------	--------------	---

-0.25	Correction	0.25
-------	------------	------

LSPD	
------	--