



Pioneer Energy Services

Dual Induction Log

15-051-26,685-00-00

API No.

Company Hess Oil Company

Well Brull Farms #1

Field Sack

County Ellis State

Kansas

Location 335' FNL & 2294' FEL

Other Services
CNL/CDL

Sec: 25 Twp: 13S Rge: 9W

Elevation

Permanent Datum Ground Level
Log Measured From Kelly Bushing
Drilling Measured From Kelly Bushing

Elevation 2019
5 Ft. Above Perm. Datum
K.B. 2024
D.F.
G.L. 2019

Date 4/19/2014

Run Number One

Depth Driller 3672

Depth Logger 3668

Bottom Logged Interval 3667

Top Log Interval 200

Casing Driller 8.625 @ 218

Casing Logger 216

Bit Size 7.875

Type Fluid in Hole Chemical

Salinity, ppm CL 5,200

Density / Viscosity 8.9 52

pH / Fluid Loss 10.0 7.2

Source of Sample Flowline

Rm @ Meas. Temp .25 @ 65

Rmf @ Meas. Temp .19 @ 65

Rmc @ Meas. Temp .34 @ 65

Source of Rmf / Rmc Charts

Rm @ BHT .14 @ 113

Operating Rig Time 2 Hours

Max Rec. Temp. F 113

Equipment Number 17

Location Hays

Recorded By C. Desaire

Witnessed By David Gould

<<< Fold Here >>>

All interpretations are opinions based on inferences from electrical or other measurements and we cannot and do not guarantee the accuracy or correctness of any interpretation, and we shall not, except in the case of gross or willful negligence on our part, be liable or responsible for any loss, costs, damages, or expenses incurred or sustained by anyone resulting from any interpretation made by any of our officers, agents or employees. These interpretations are also subject to our general terms and conditions set out in our current Price Schedule.

Comments

Thank you for using Pioneer Energy Services
www.pioneerenergy.com
785 625 3858

Hays KS, Hwy 183 Bypass and Noose Rd,
1 1/2 W, N Into

Database File: c:\warrior\data\hess_brull farms #1\hesshd.db
Dataset Pathname: dil/hessstk
Presentation Format: dil2in
Dataset Creation: Sat Apr 19 20:39:41 2014
Charted by: Depth in Feet scaled 1:600

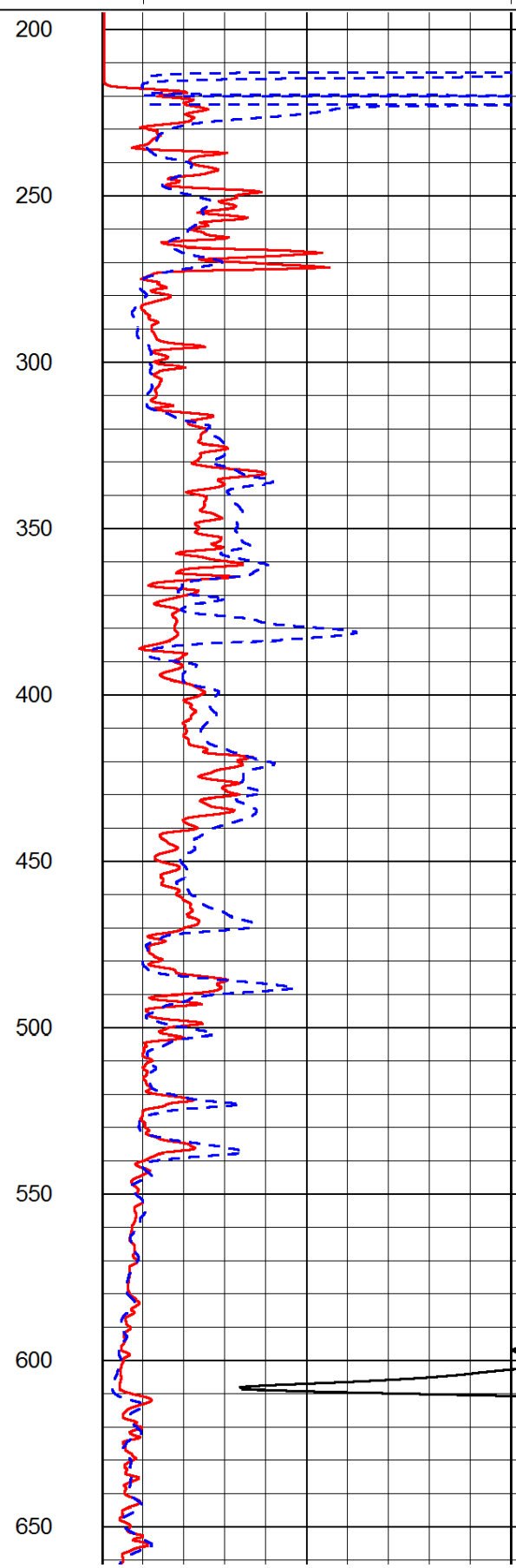
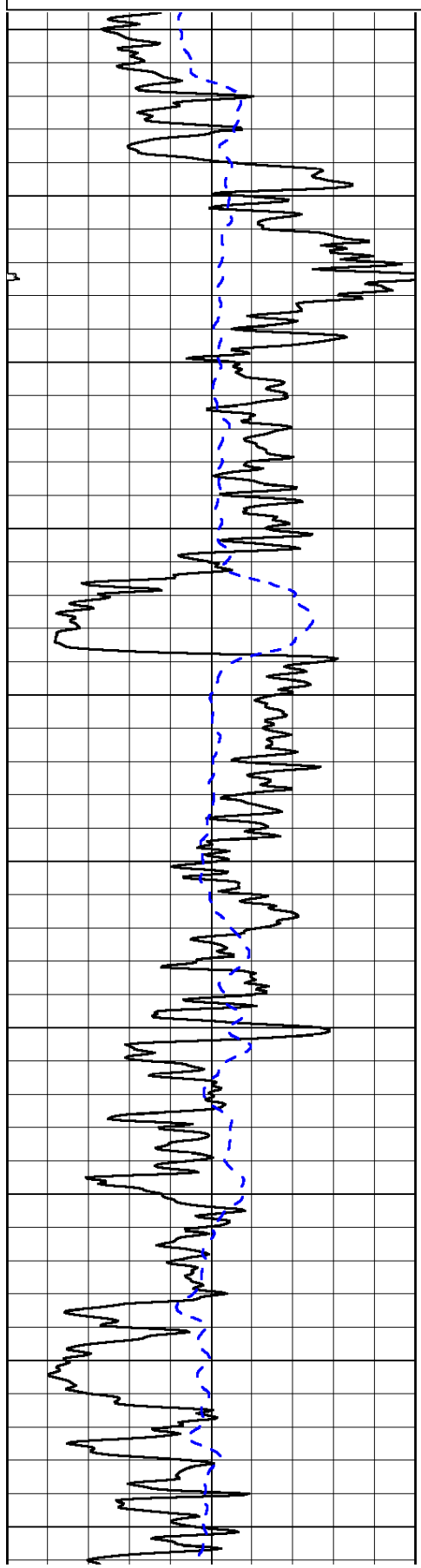
0	Gamma Ray	150
-200	SP (mV)	0

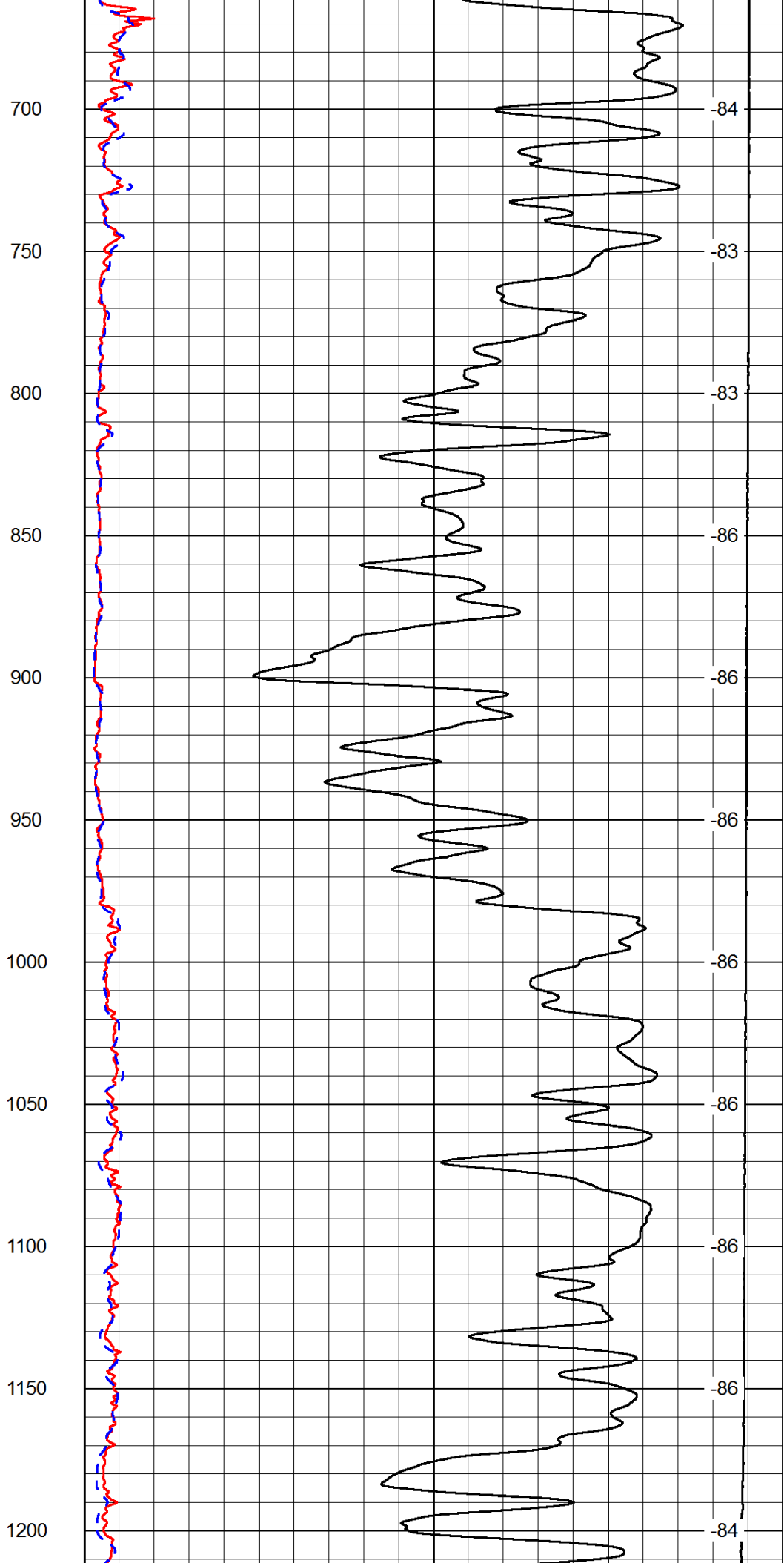
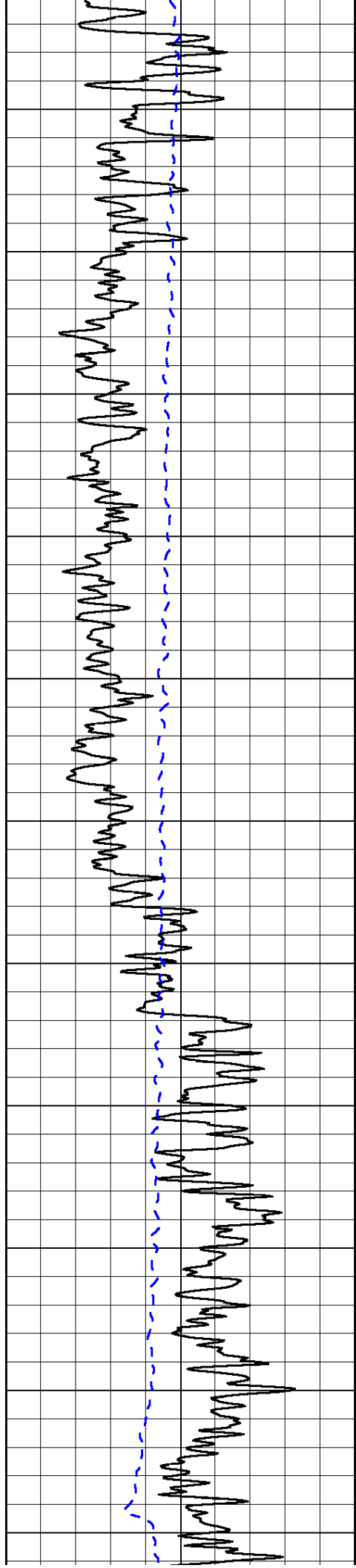
0	Shallow Resistivity	50
0	Deep Resistivity	50

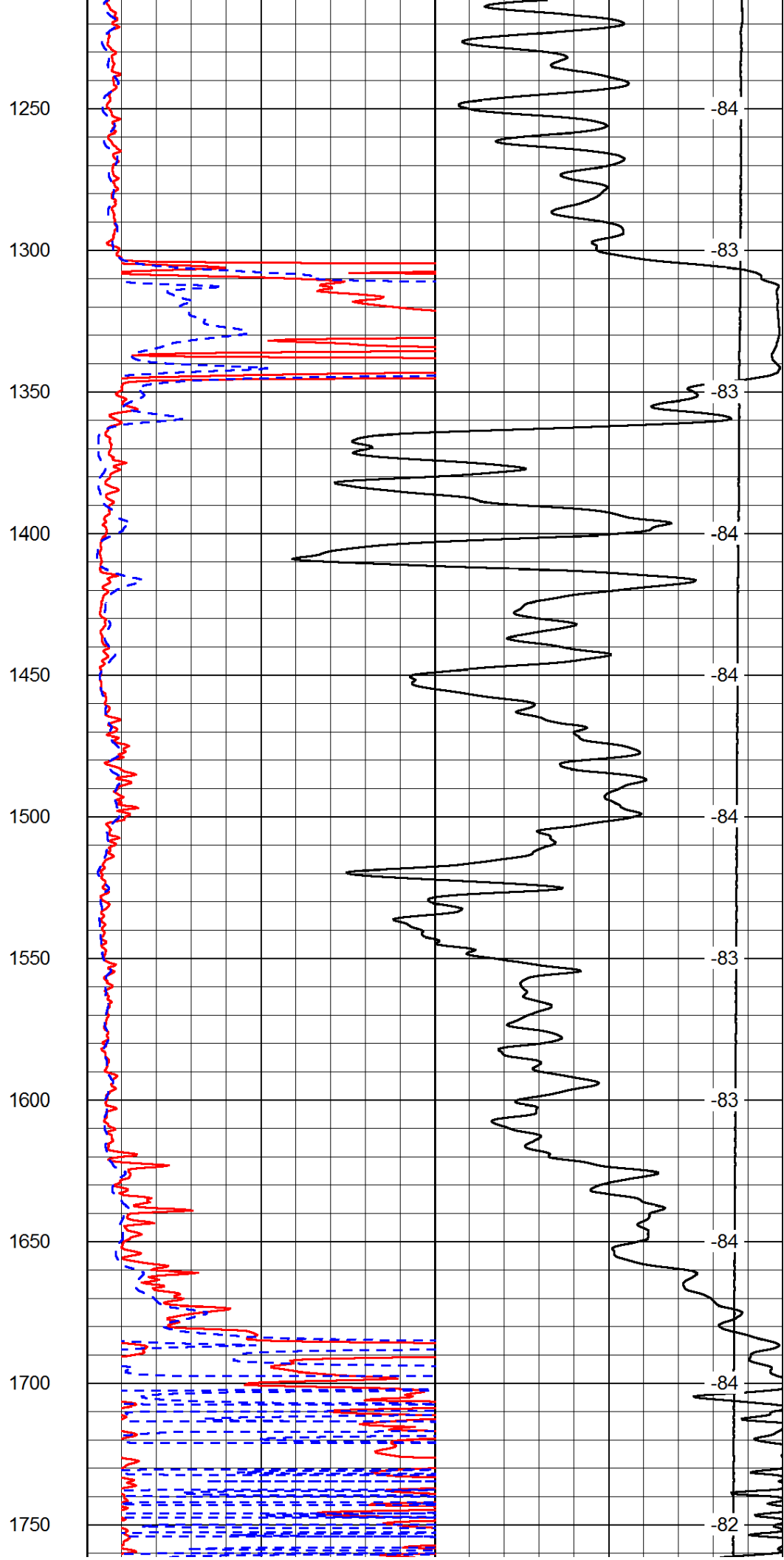
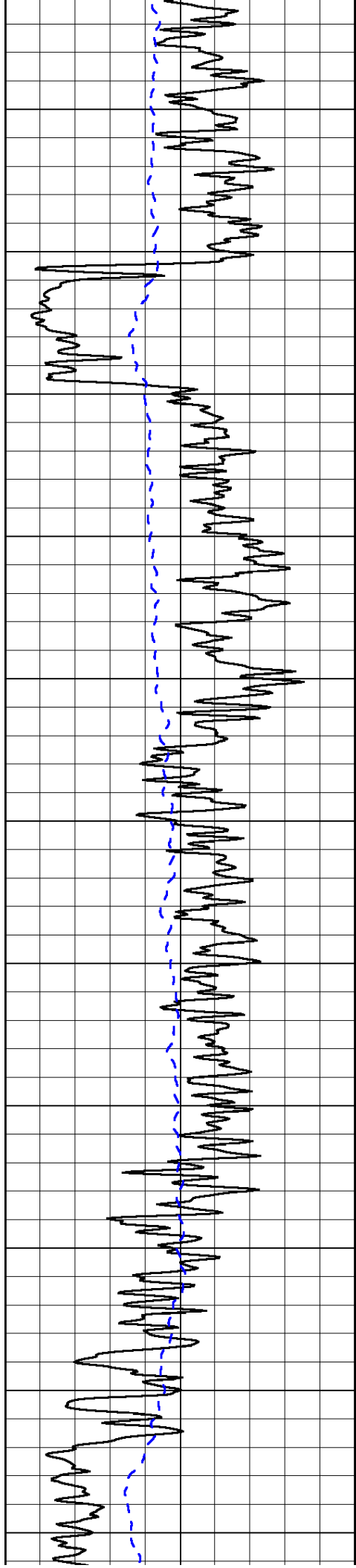
LSPD

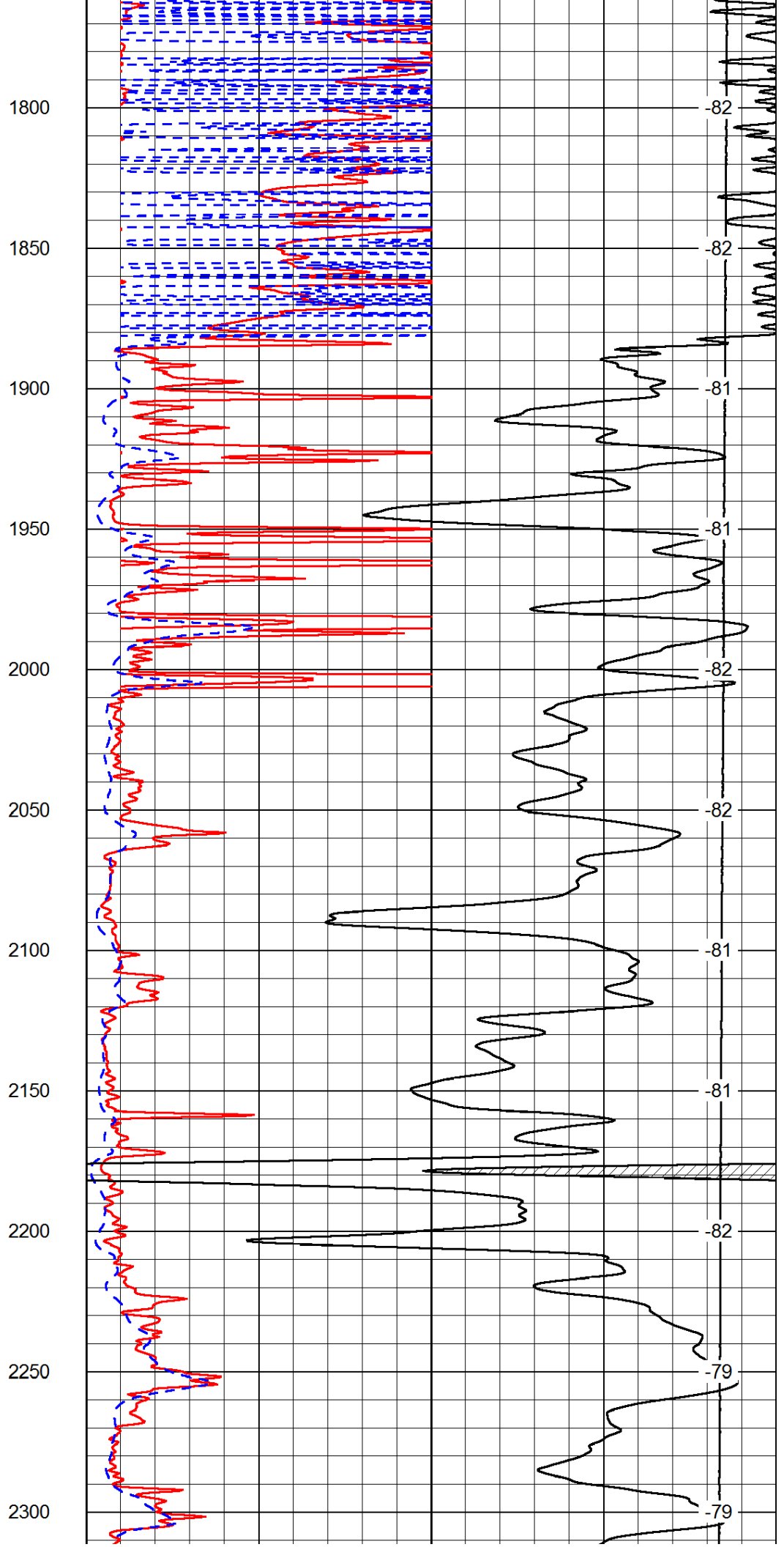
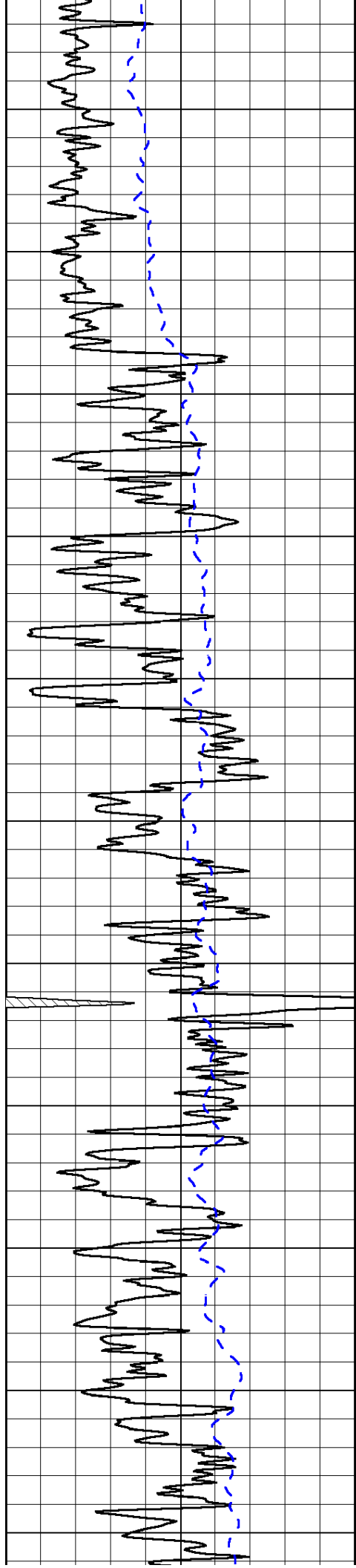
1000	Conductivity	0
15000	Line Tension	0

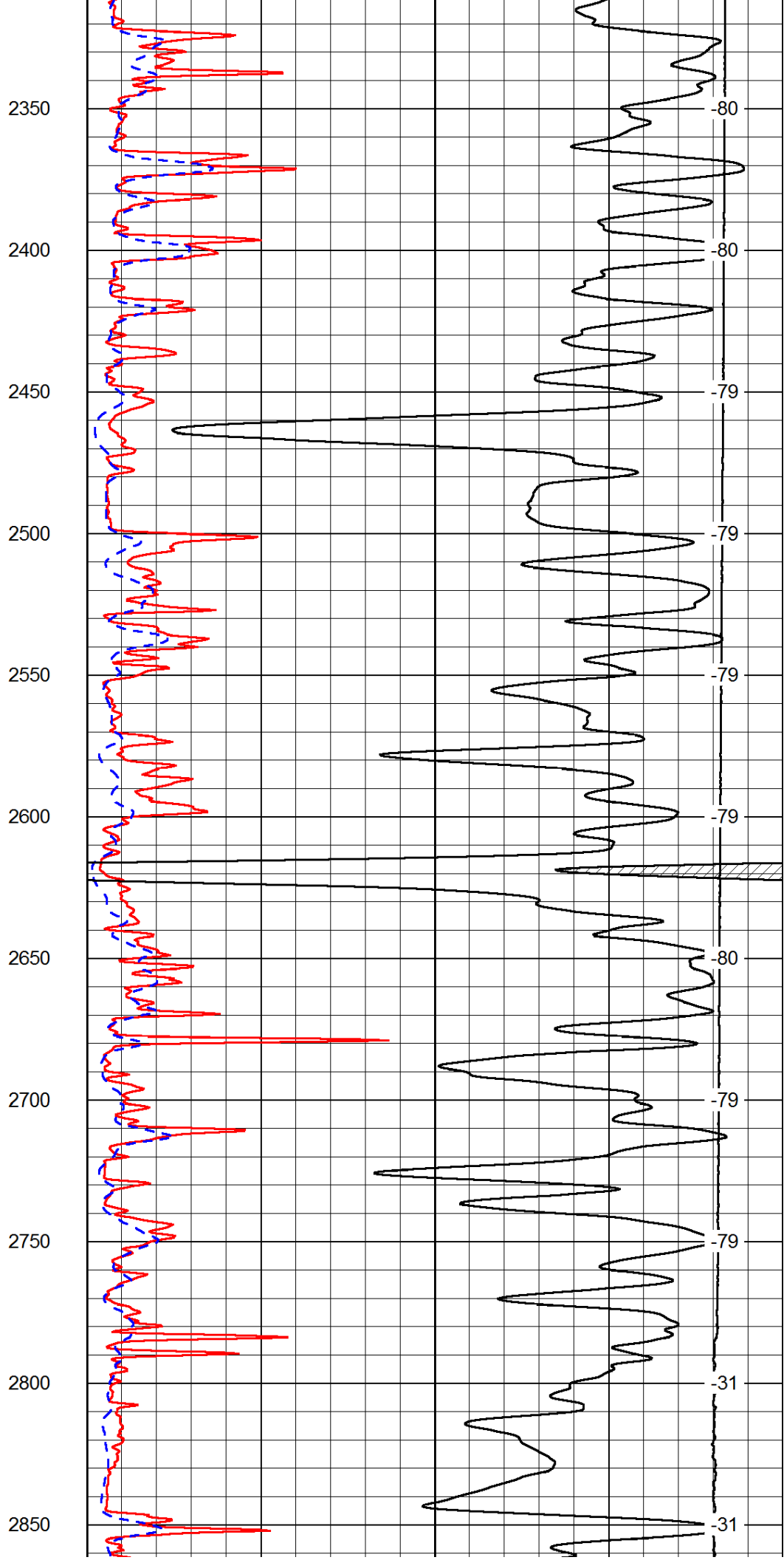
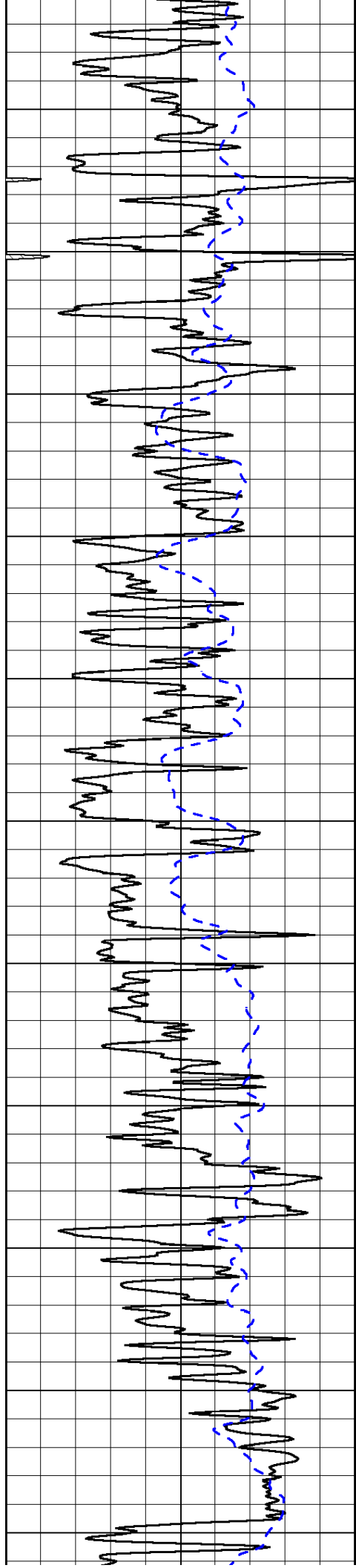
50	Shallow Resistivity	500
50	Deep Resistivity	500

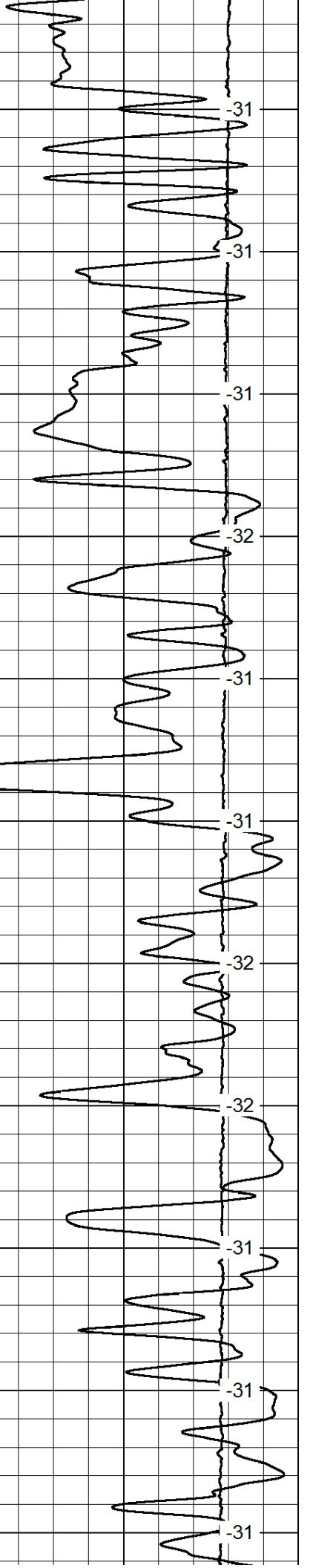
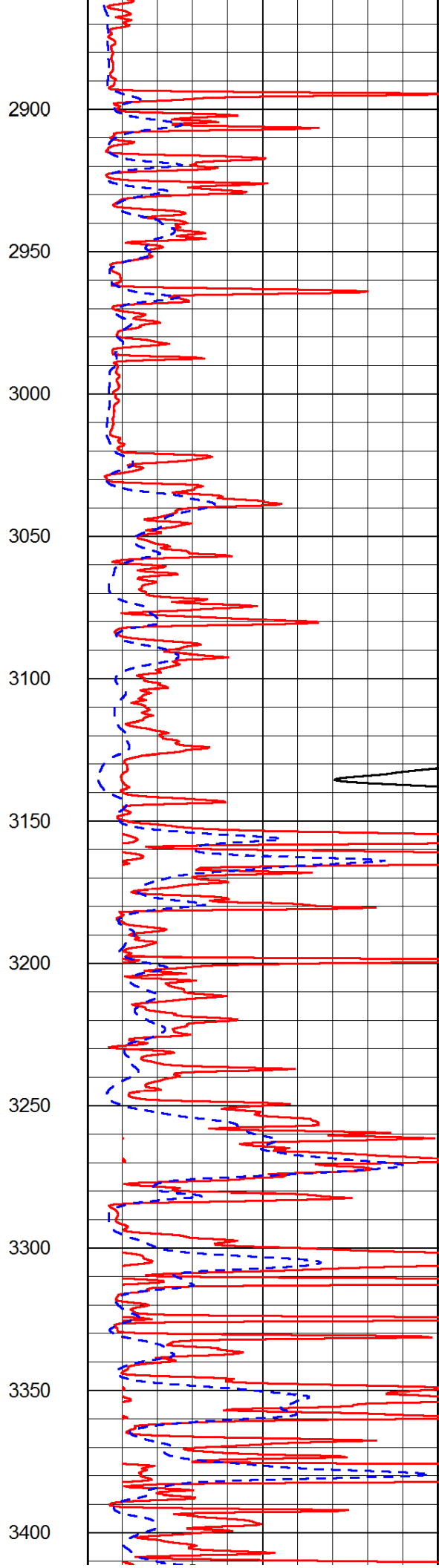
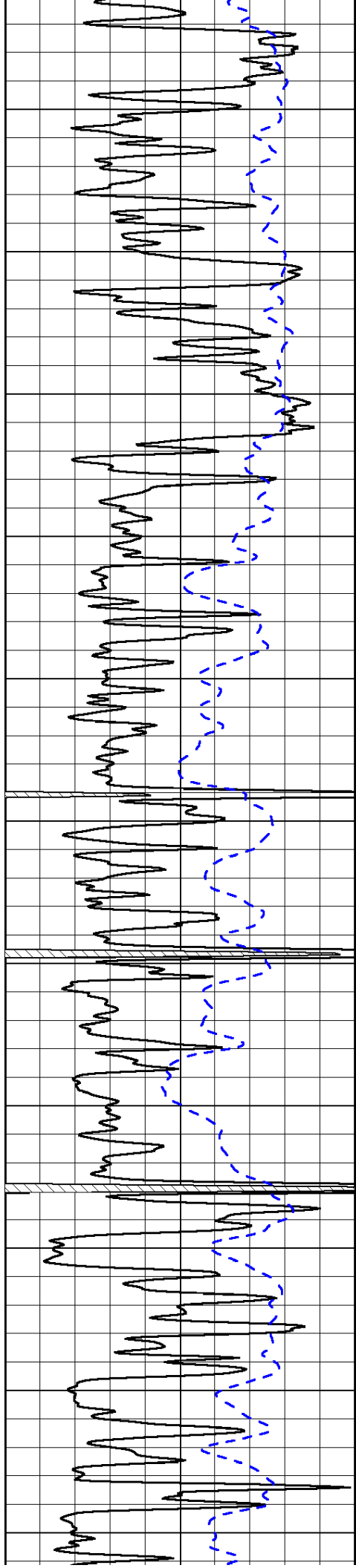


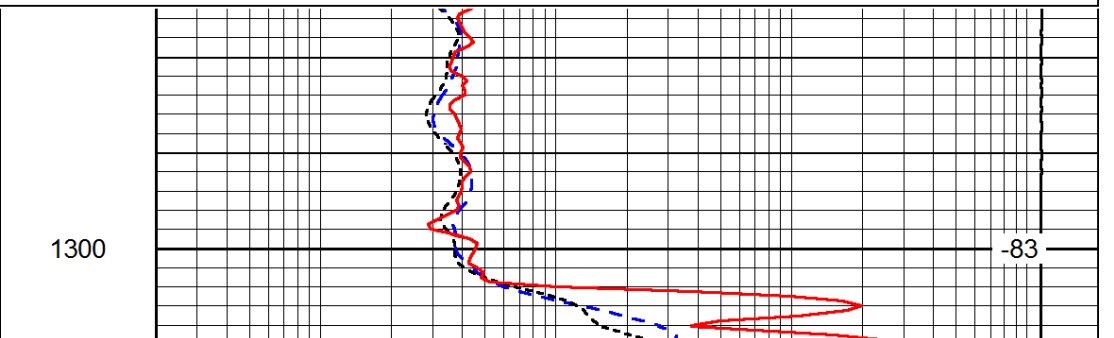
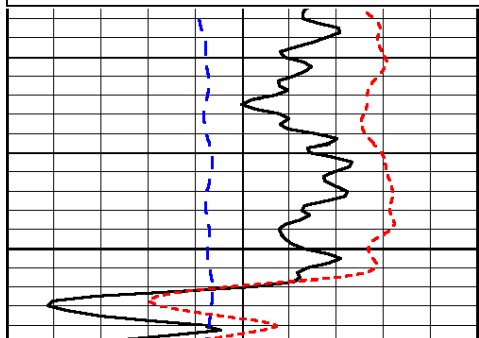
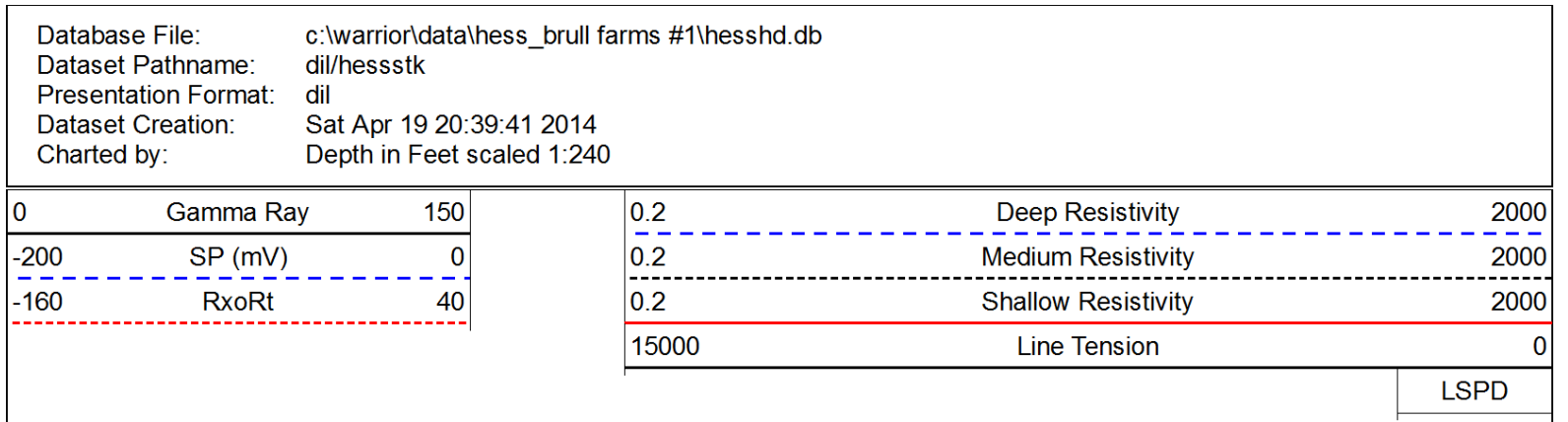
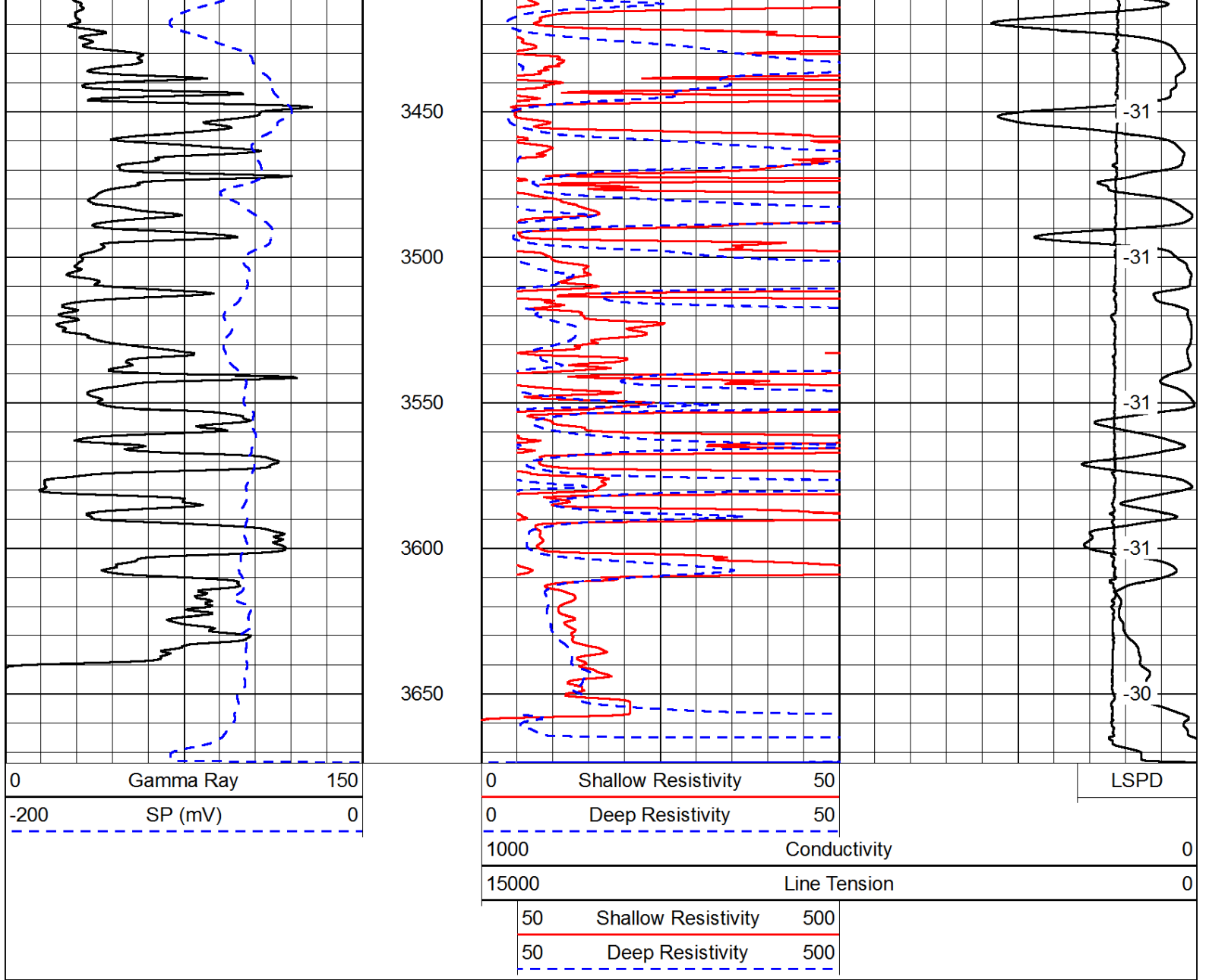


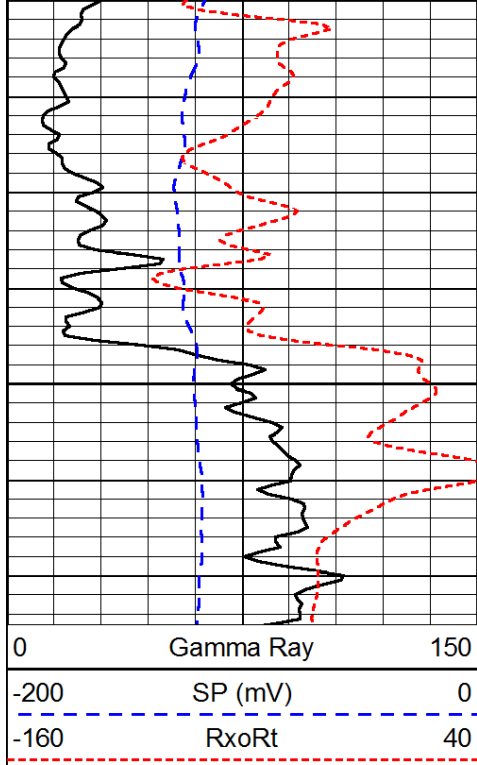




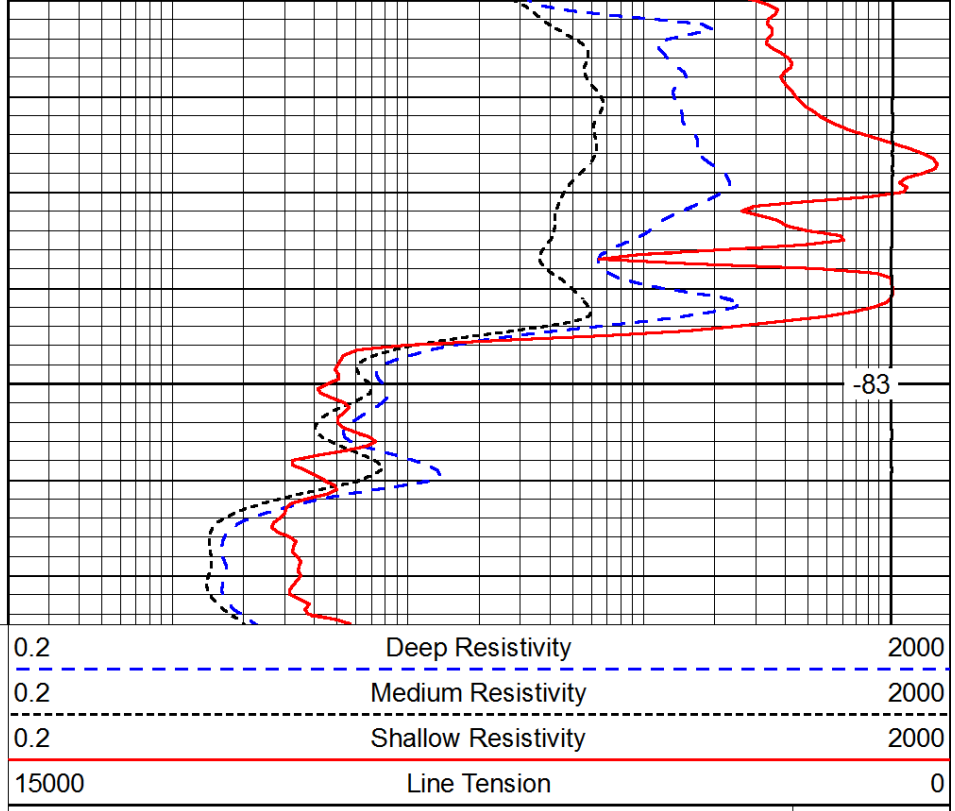








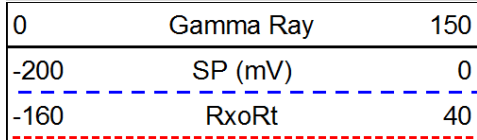
1350



-83

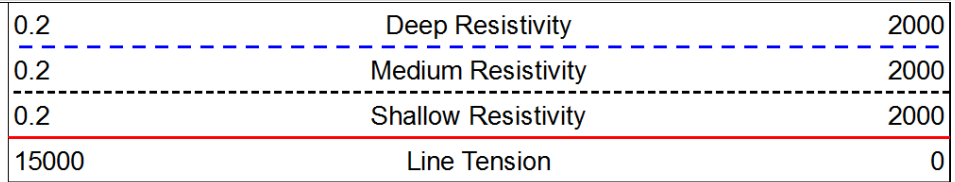
LSPD

Database File: c:\warrior\data\hess_brull farms #1\hesshd.db
 Dataset Pathname: dil/hessstk
 Presentation Format: dil
 Dataset Creation: Sat Apr 19 20:39:41 2014
 Charted by: Depth in Feet scaled 1:240



2800

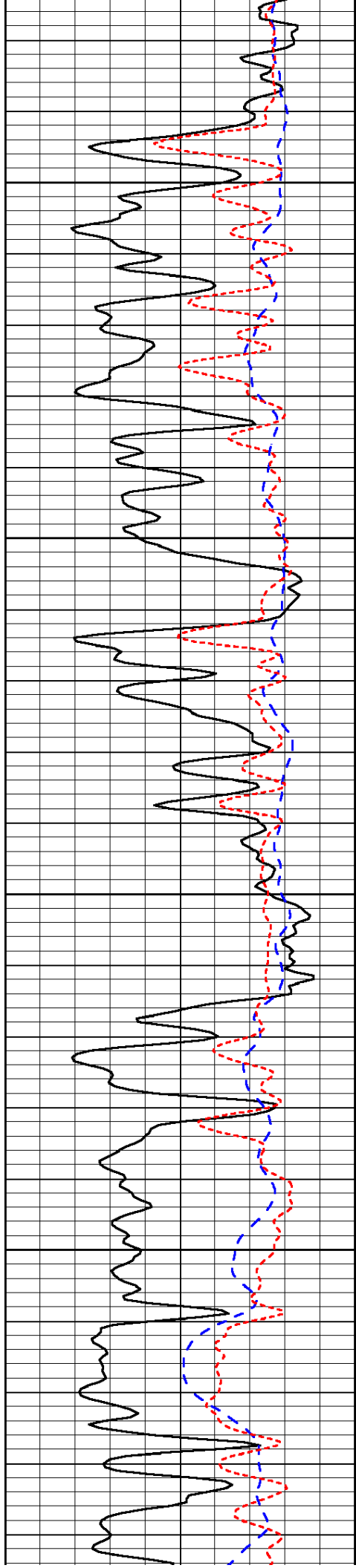
2850



-31

-31

LSPD

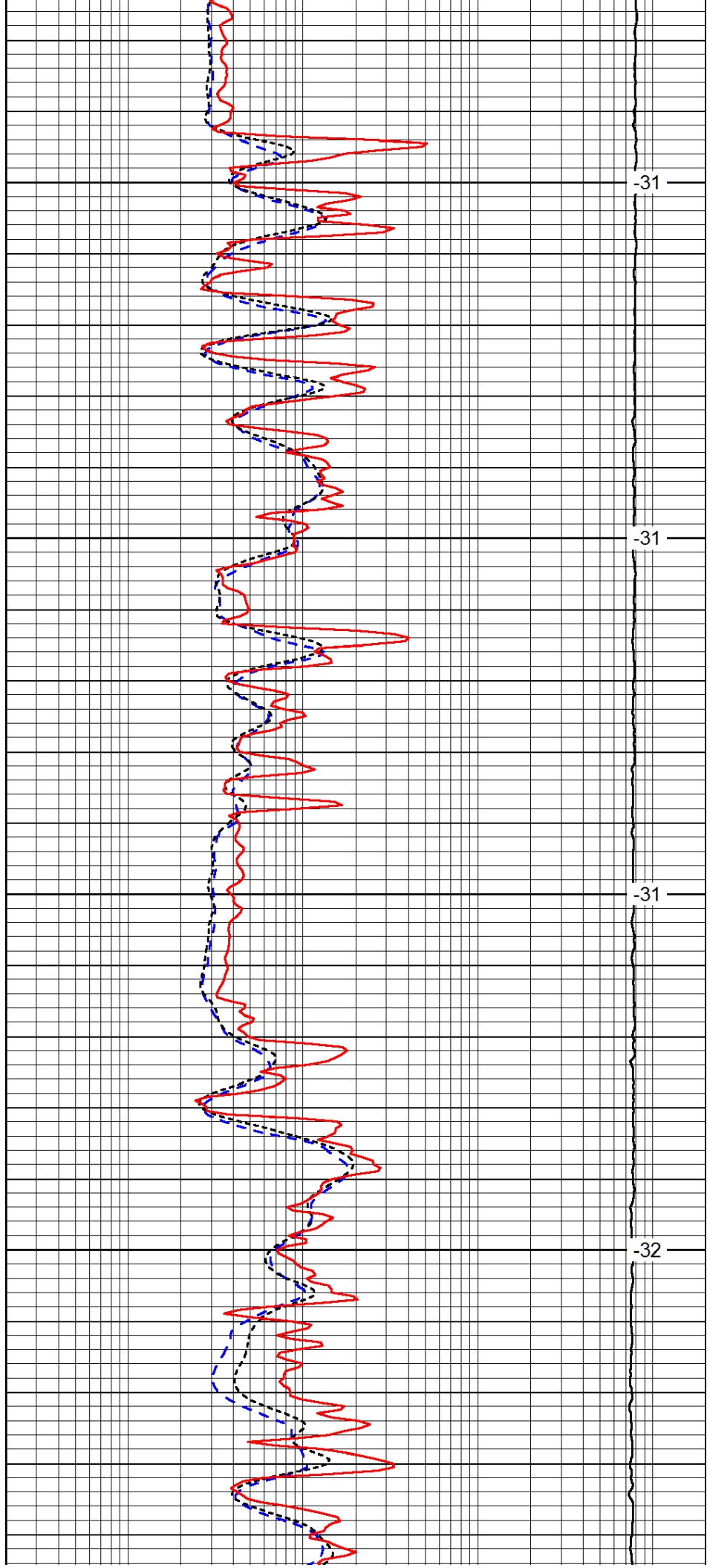


2900

2950

3000

3050

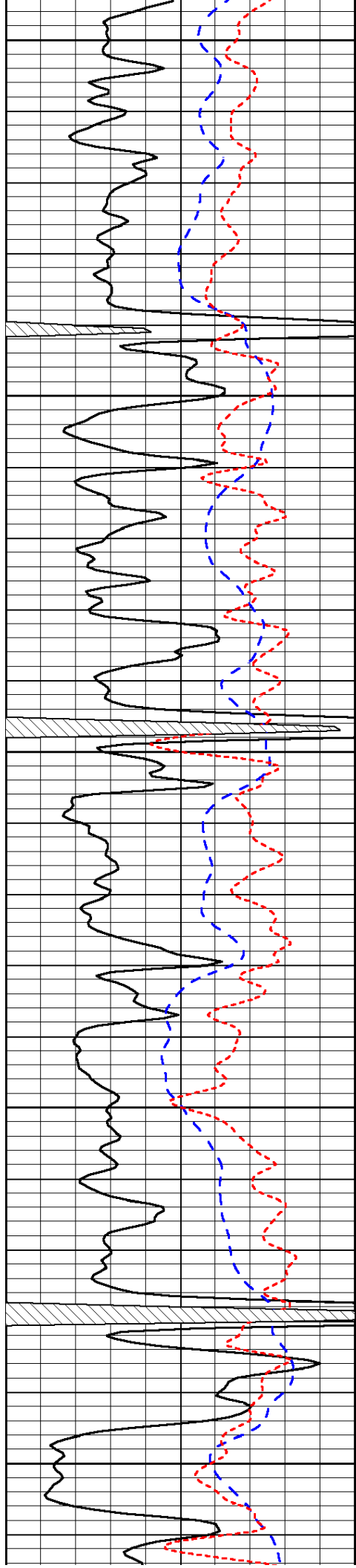


-31

-31

-31

-32



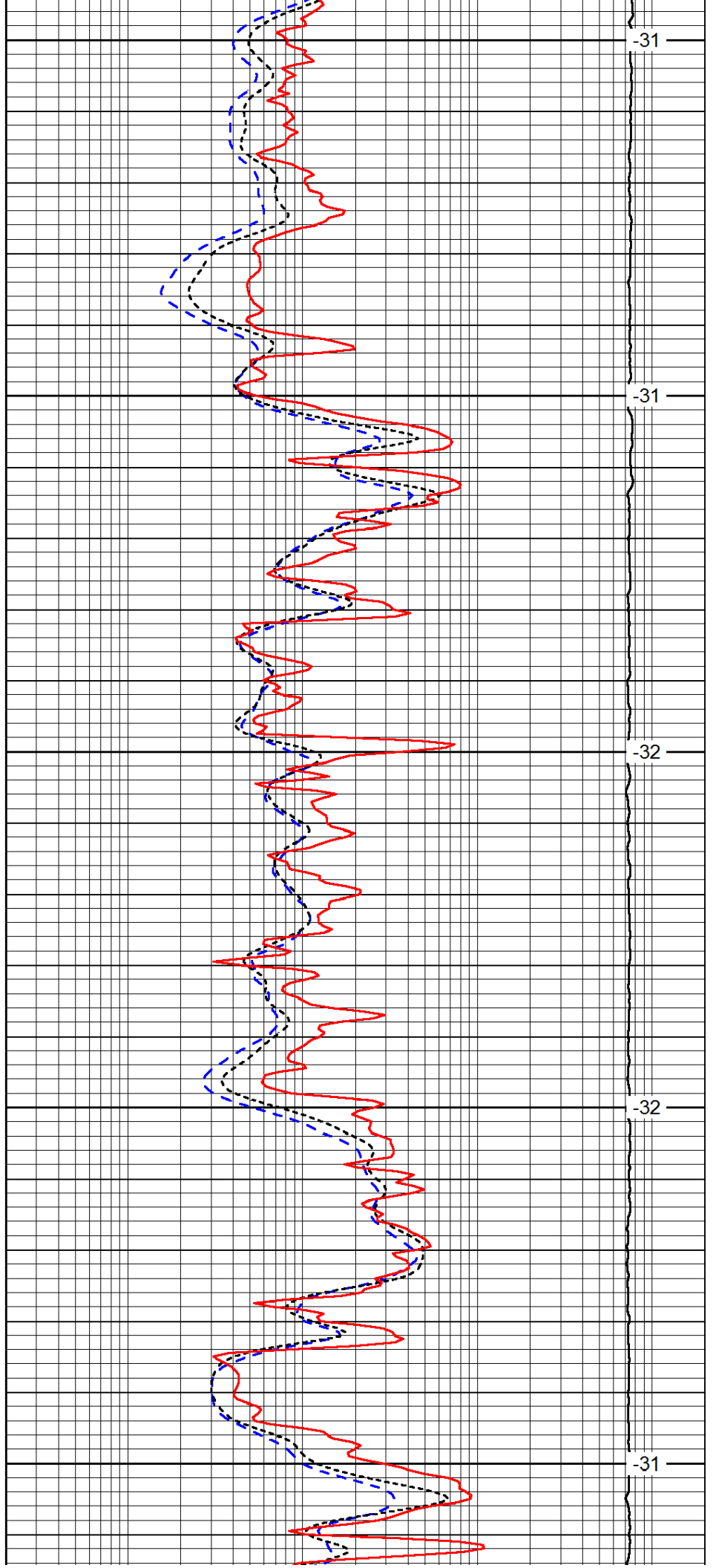
3100

3150

3200

3250

3300



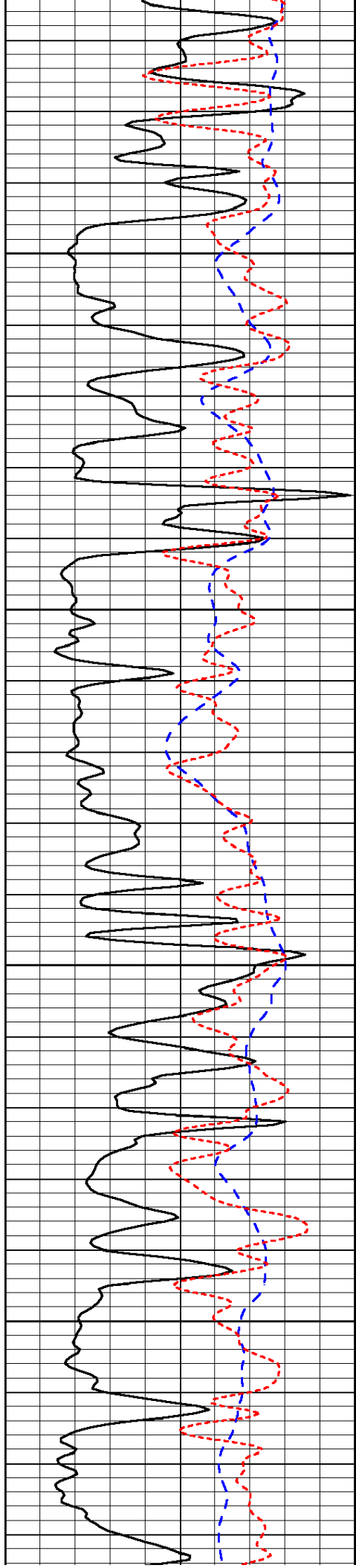
-31

-31

-32

-32

-31

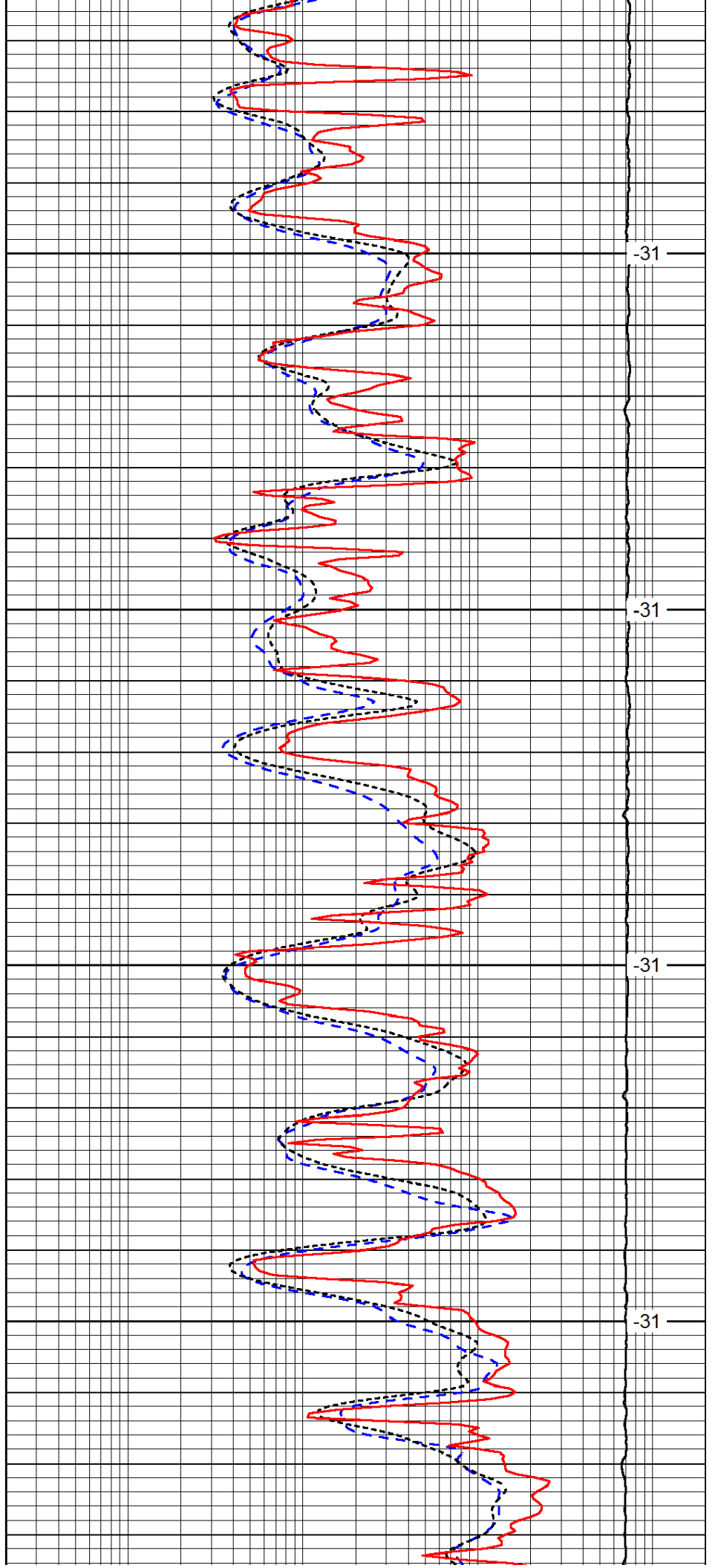


3350

3400

3450

3500

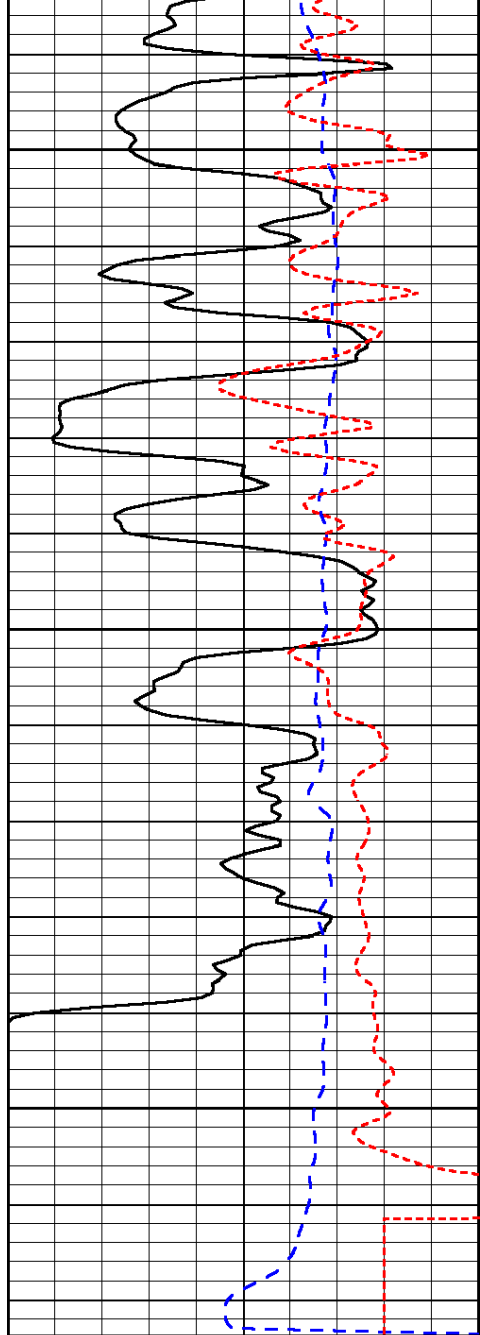


-31

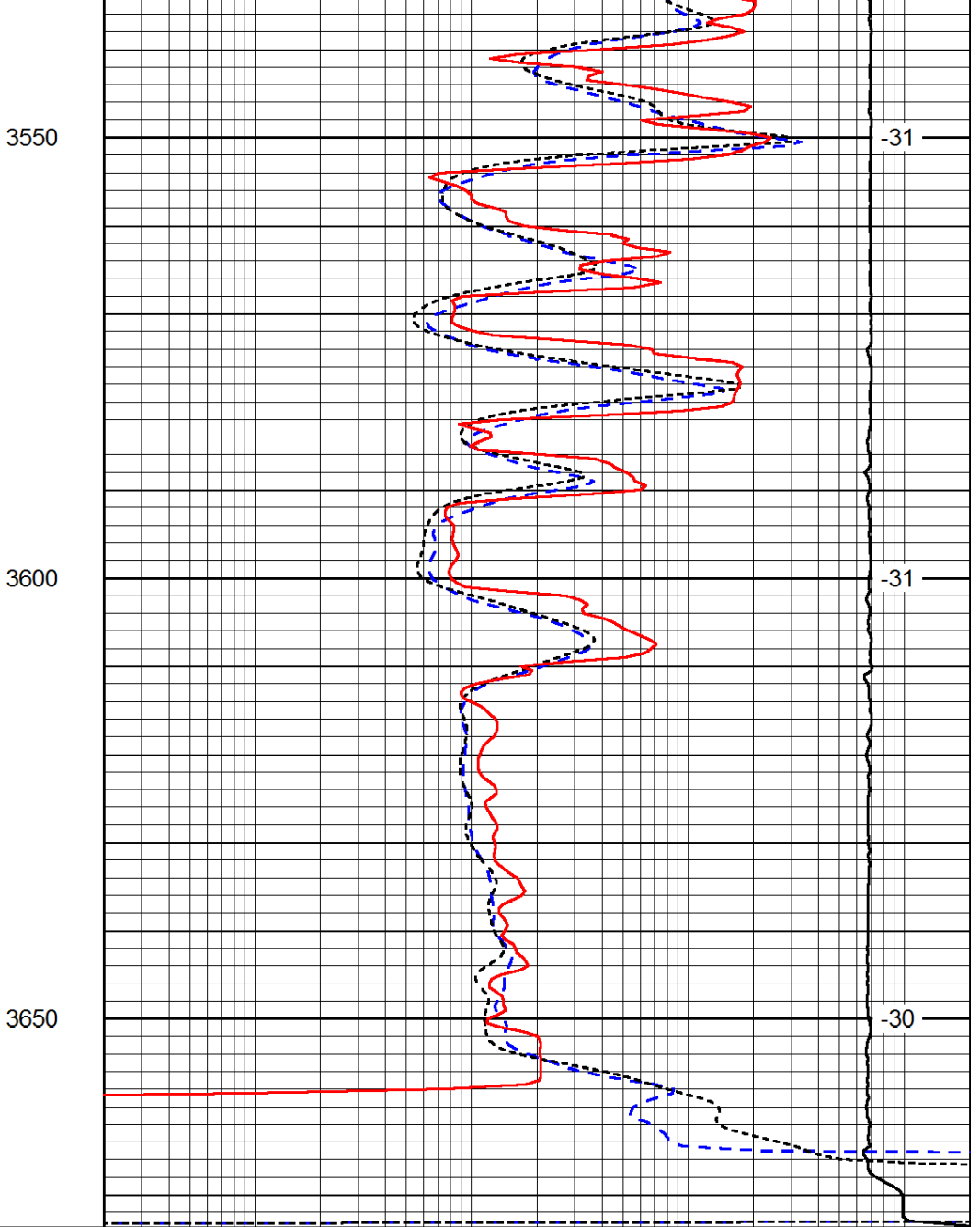
-31

-31

-31



0	Gamma Ray	150
-200	SP (mV)	0
-160	RxoRt	40



0.2	Deep Resistivity	2000
0.2	Medium Resistivity	2000
0.2	Shallow Resistivity	2000
15000	Line Tension	0

LSPD