



**GAMMA RAY
NEUTRON
CEMENT BOND
COMPLETION LOG**

Company **KANSAS MB PROJECT, LLC**
 Well **WALTER MOORE #MB 3**
 Field **WAYSIDE - HAVANA**
 County **CHAUTAUQUA**
 State **KANSAS**

Company **KANSAS MB PROJECT, LLC**
 Well **WALTER MOORE #MB 3**
 Field **WAYSIDE - HAVANA**
 County **CHAUTAUQUA** State **KANSAS**

Location: **API # : 15-019-27481-00-00**
2910' FSL & 4726' FEL
SE SW SW NW
SEC 3 TWP 34S RGE 13E
 Permanent Datum **GL** Elevation **837EST.**
 Log Measured From **GL** K.B.
 Drilling Measured From **GL** D.F.
 G.L. **837EST.**

Date	12-16-14		
Run Number	2 NW		
Depth Driller	1740'		
Depth Logger	1739.3'		
Top Log Interval	0		
Bottom Logged Interval	1739.3'		
Fluid Level	FULL		
Type Fluid	WATER		
Production Casing	4.5" @ TD	@	@
Max. Recorded Temp.			
Estimated Cement Top			
Calculated Cement Top			
Amount & Type Cement			
Amount & Type Admix			
Drilling Contractor			
Equipment Number	103		
Location			
Recorded By	SOLOMON, B.		
Witnessed By	COODY, R.		

<<< Fold Here >>>

All interpretations are opinions based on inferences from electrical or other measurements and we cannot and do not guarantee the accuracy or correctness of any interpretation, and we shall not, except in the case of gross or willful negligence on our part, be liable or responsible for any loss, costs, damages, or expenses incurred or sustained by anyone resulting from any interpretation made by any of our officers, agents or employees. These interpretations are also subject to our general terms and conditions set out in our current Price Schedule.

Comments

THANK YOU

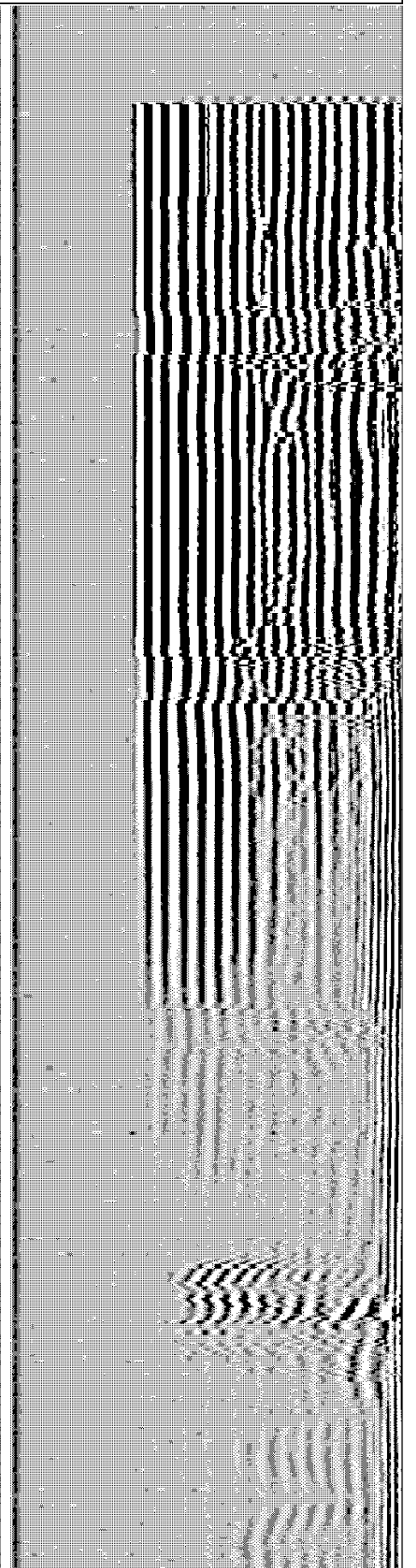
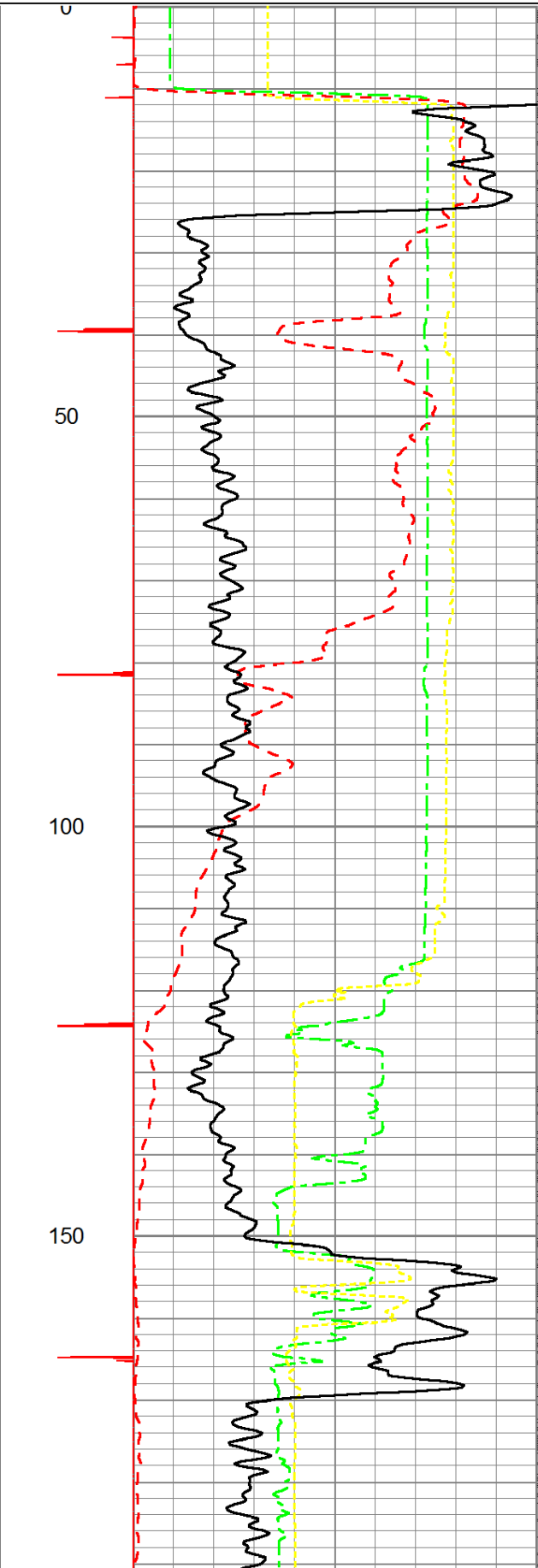
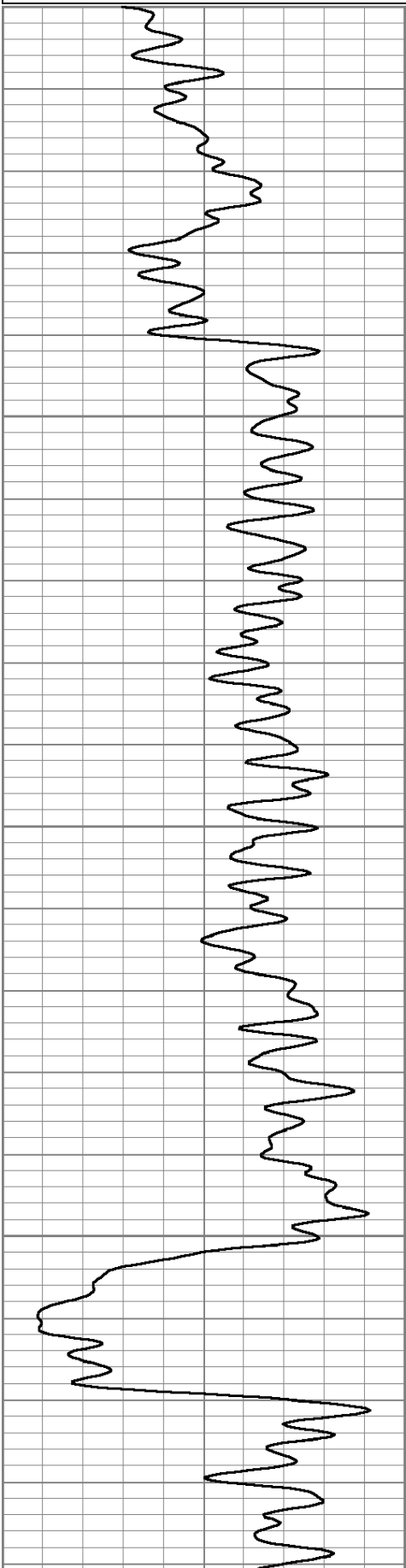
Sensor	Offset (ft)	Schematic	Description	Len (ft)	OD (in)	Wt (lb)
			tekco tekco cent	2.17	1.69	5.00

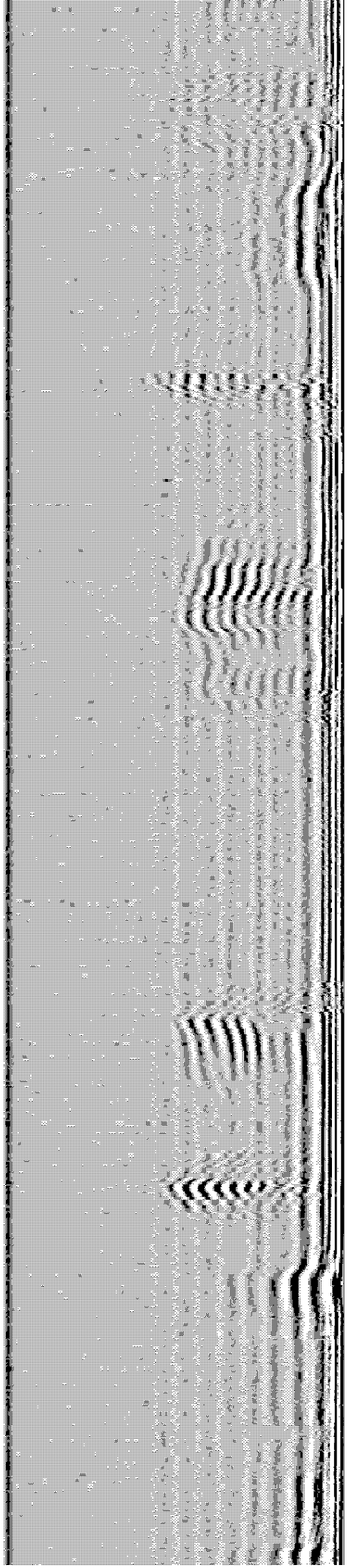
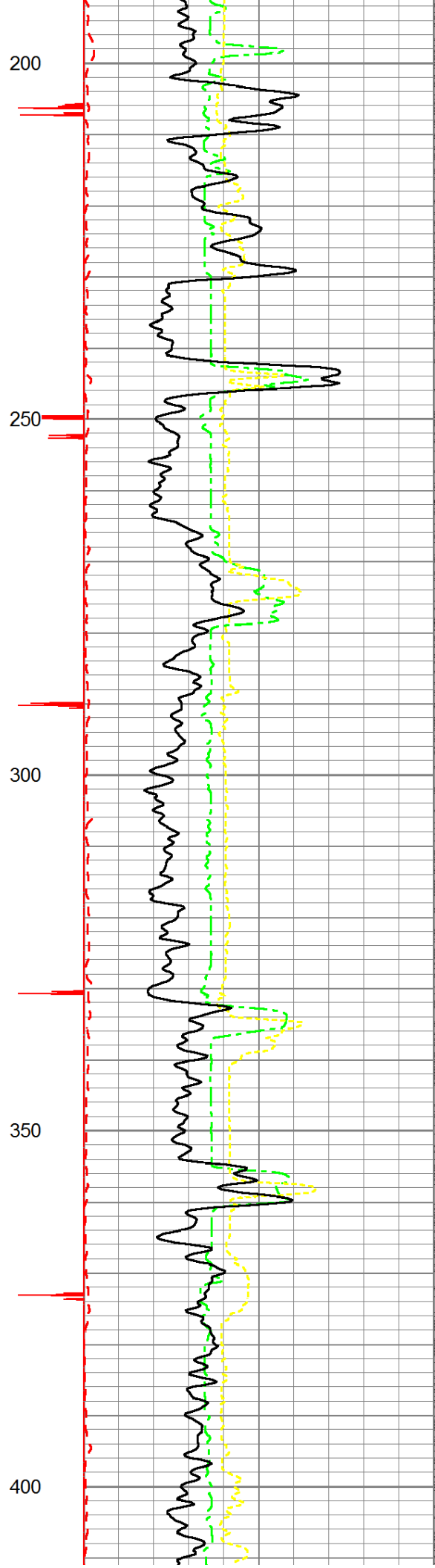
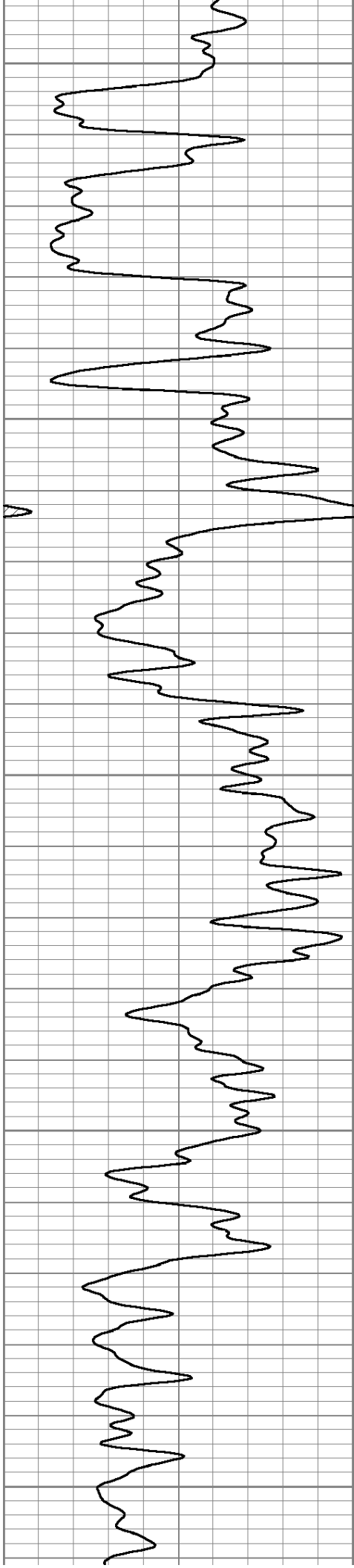
				tekco cent.			
WVF3FT	17.50			CBLTEKCO-TEKCO2RCVR (TEKCO169) 1 11/16" TEKCO 2 RCVR DELWARE	9.75	1.69	50.00
WVF5FT	16.50						
WVFCAL	13.08						
WVFSYNC	13.08			tekco tekco cent.	2.17	1.69	5.00
GR	7.59			GR-TITAN_169 (TIT169_001) Titan 1 11/16" Gamma Ray	4.75	1.69	20.00
CCL	5.05			CCL-TITAN_169 (TIT169) Titan 1 11/16" Logging CCL	1.83	1.69	7.50
NEU	0.63			NEU-TITAN (TIT801) TITAN 1 11/16" Neutron	4.33	1.69	25.00

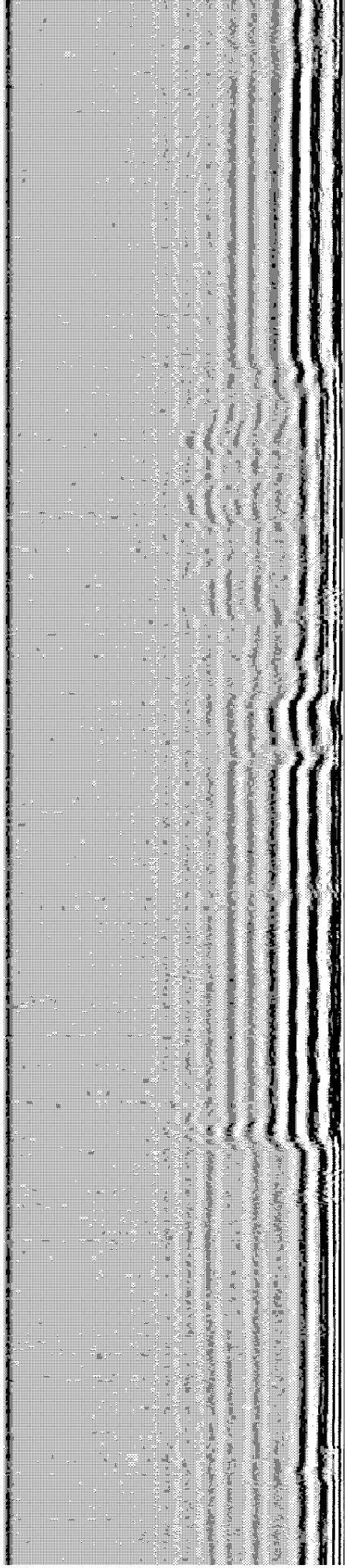
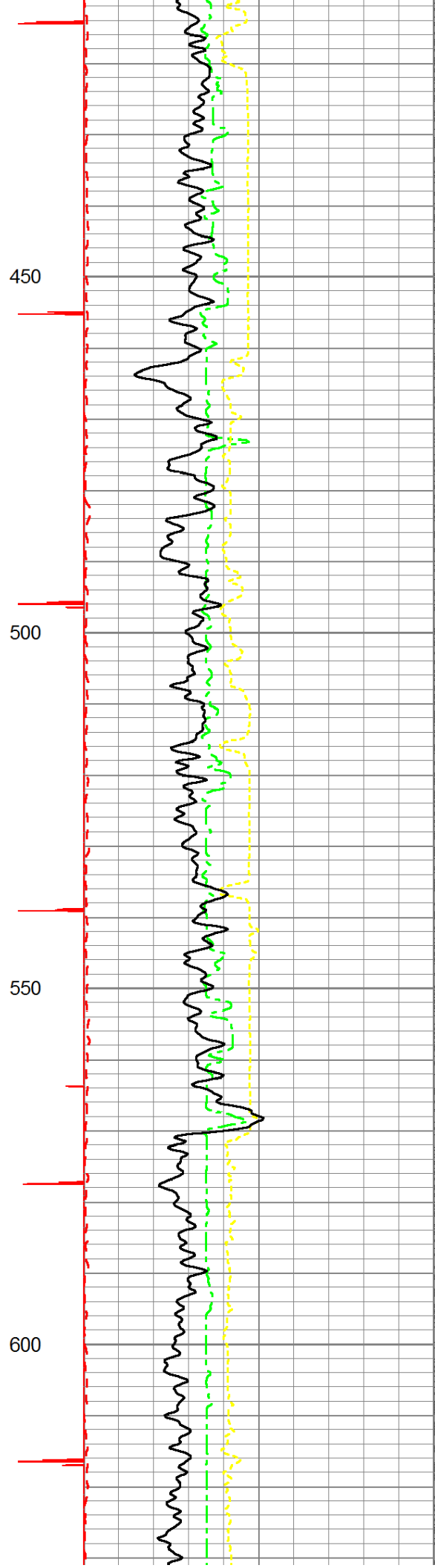
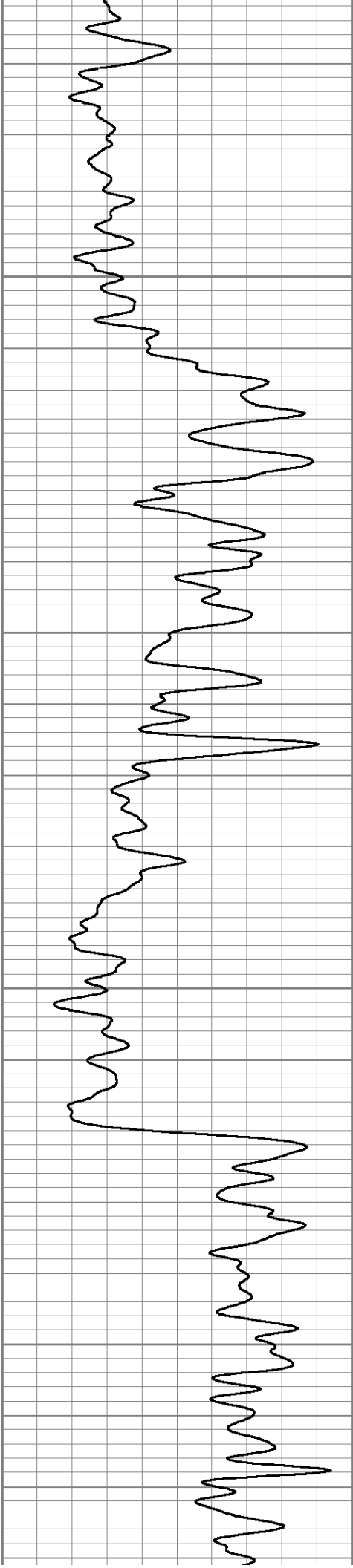
Dataset: walter moore #mb 3.db: field/well/run1/pass2
 Total Length: 25.00 ft
 Total Weight: 112.50 lb
 O.D.: 1.69 in

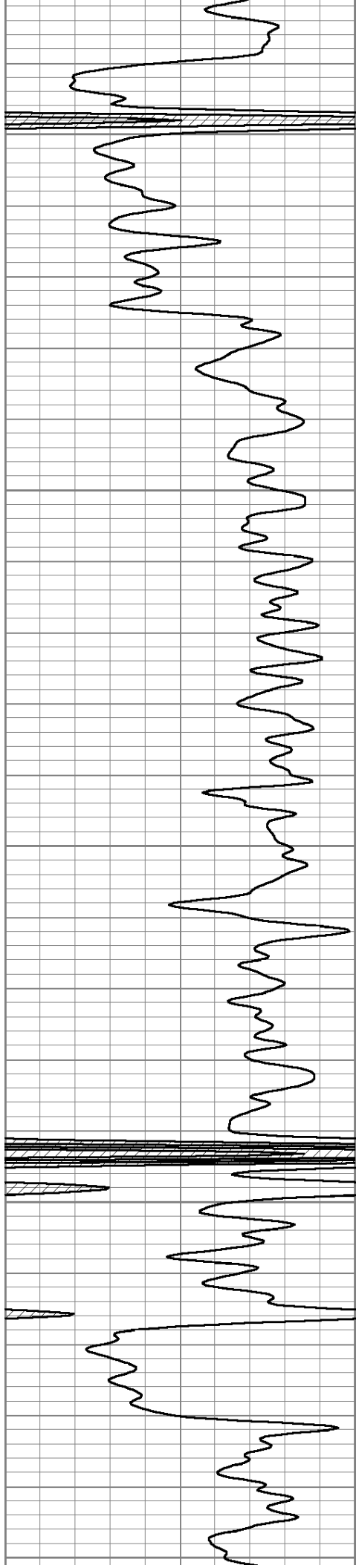
Database File: e:\walter moore #mb 3.db
 Dataset Pathname: pass1
 Presentation Format: scbl_dr

0	Gamma Ray	150	Collar Locator	0	AMP3FT (mV)	200	200	VDL	1200
150	gr	300	9	0	1100	TT3FT (usec)	200		
					1800	TT5FT (usec)	200		
					100	NEU (cps)	1600		









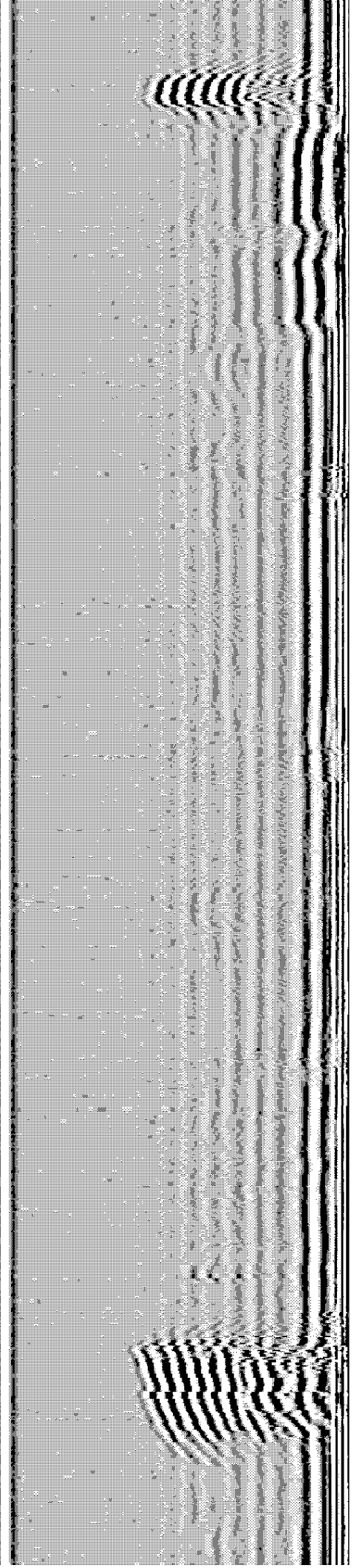
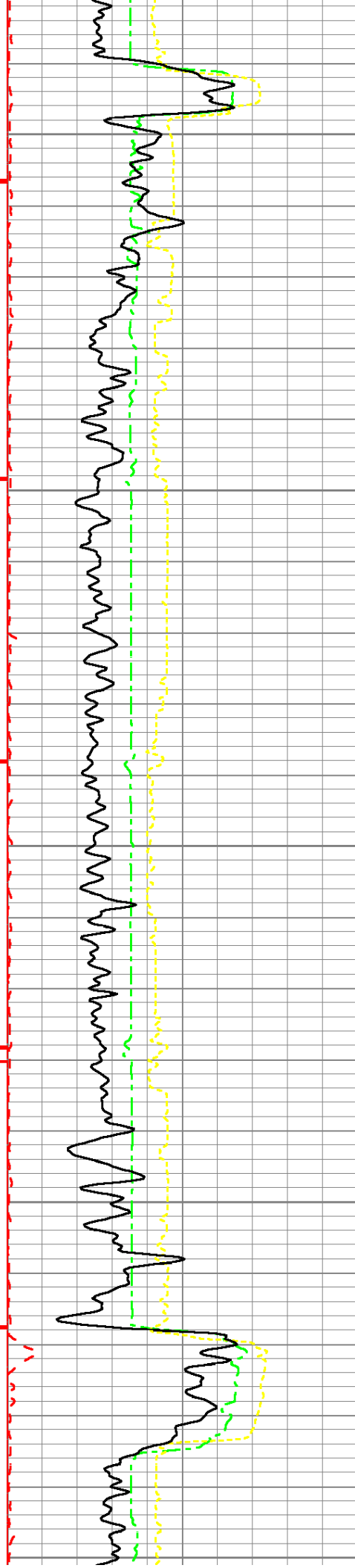
650

700

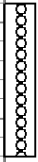
750

800

850



PERFORATION
3-1/8" SLICK TAG GUN
48 SHOTS 928'-944'

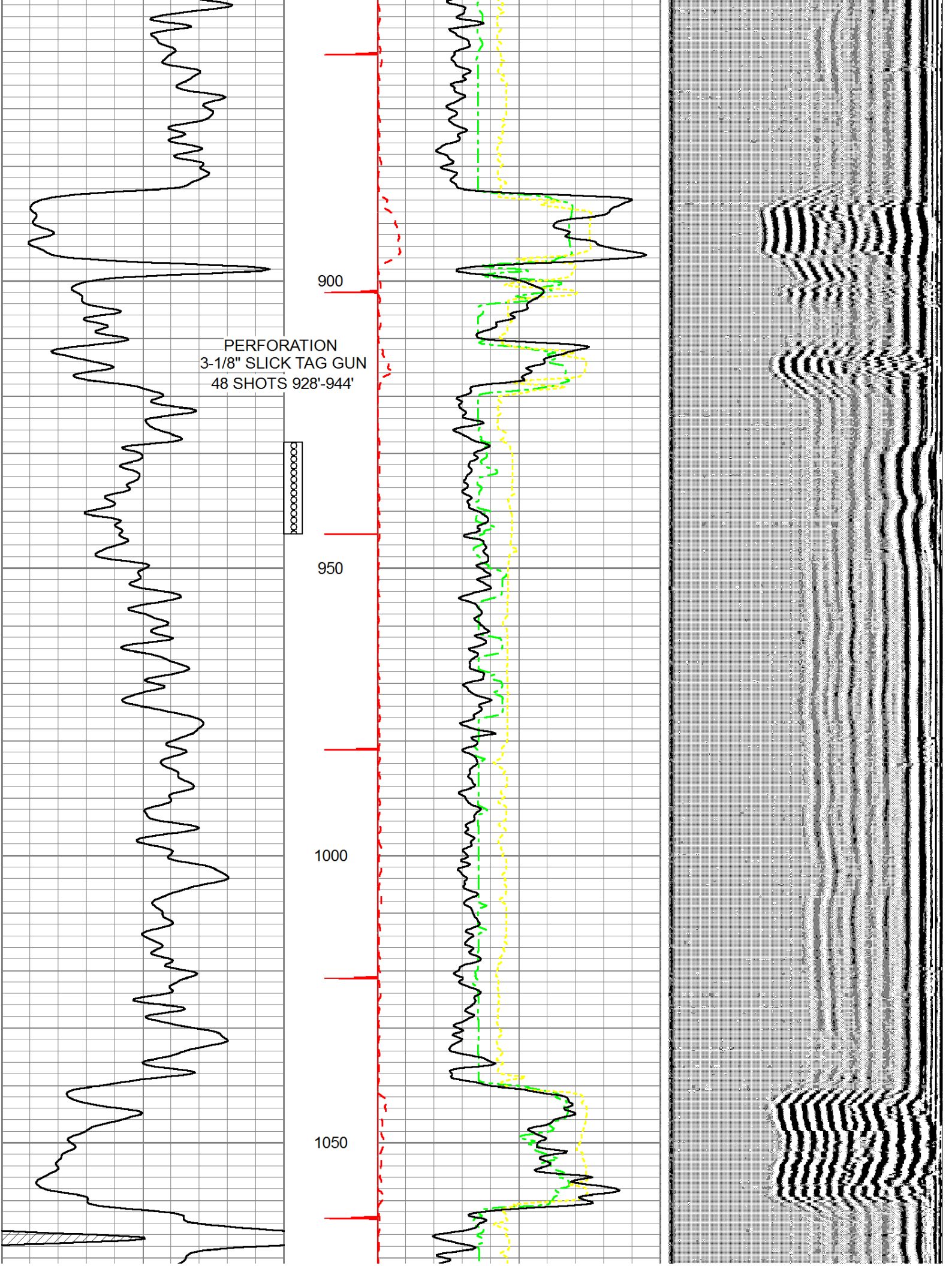


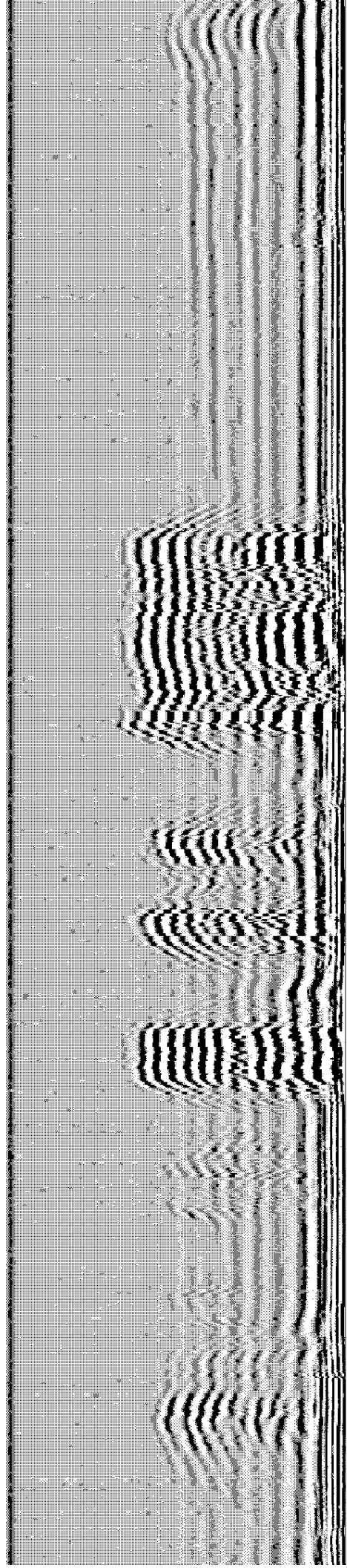
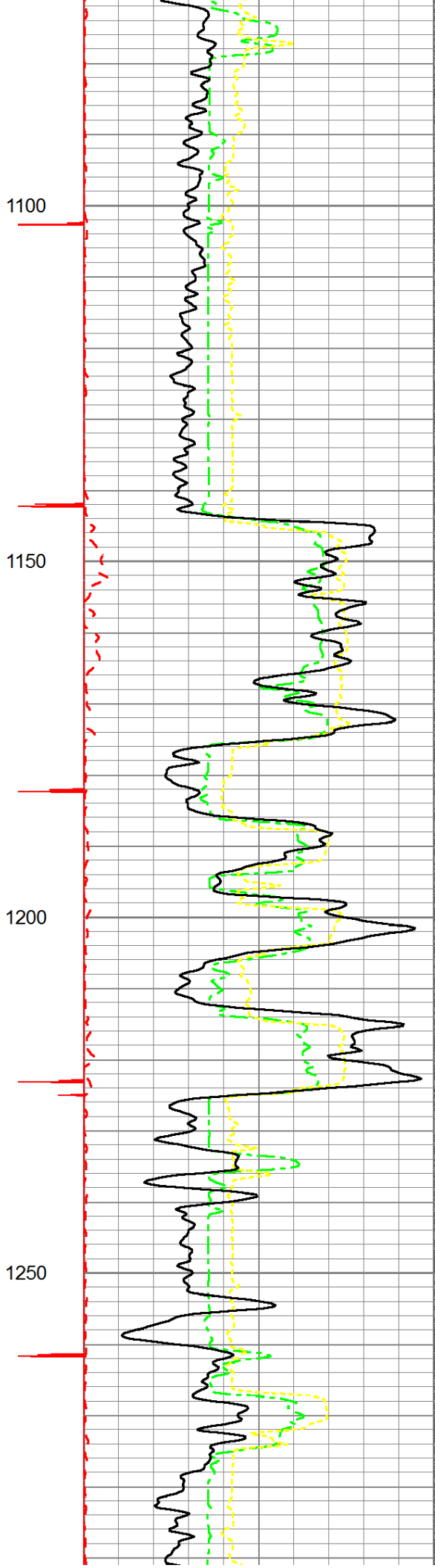
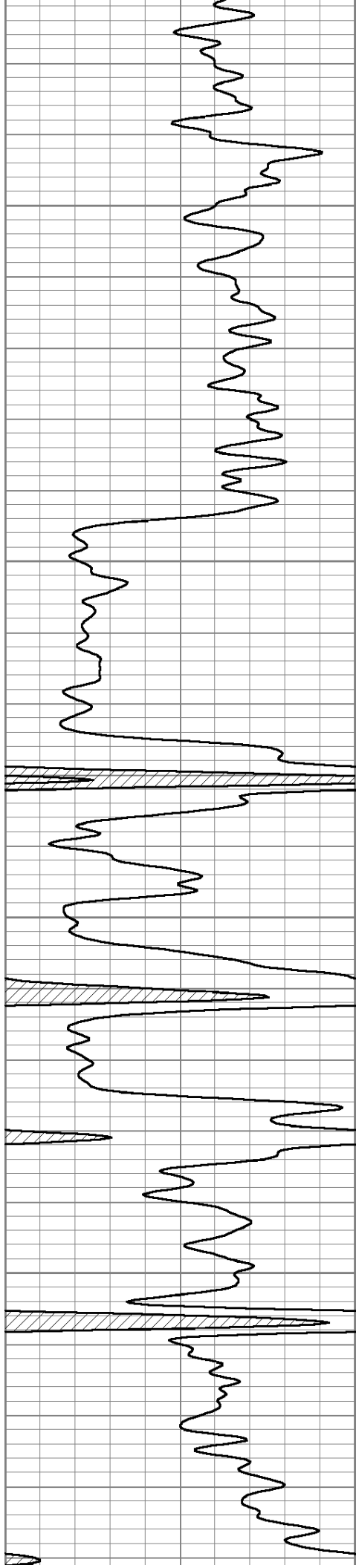
900

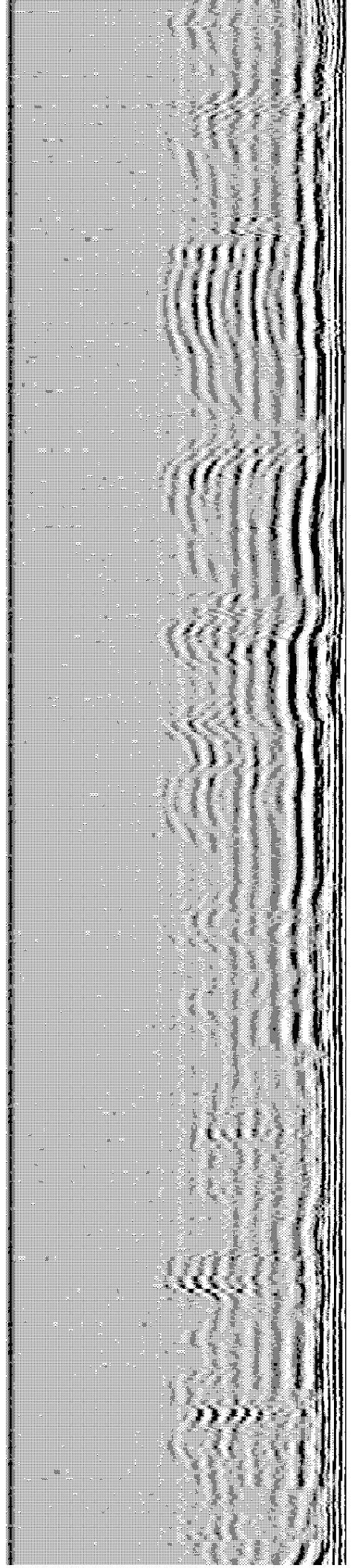
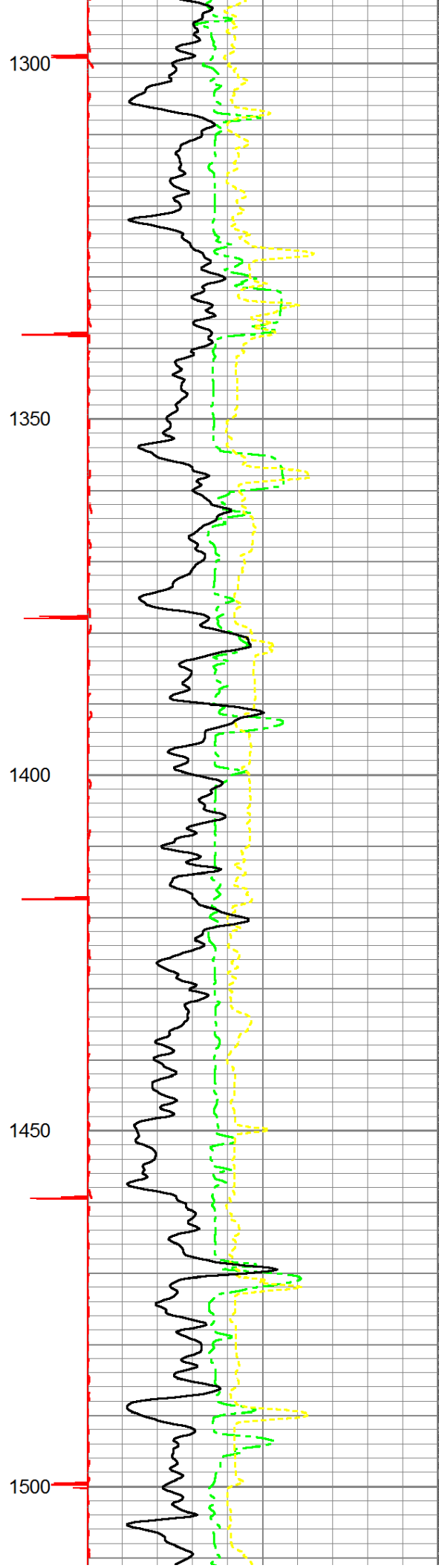
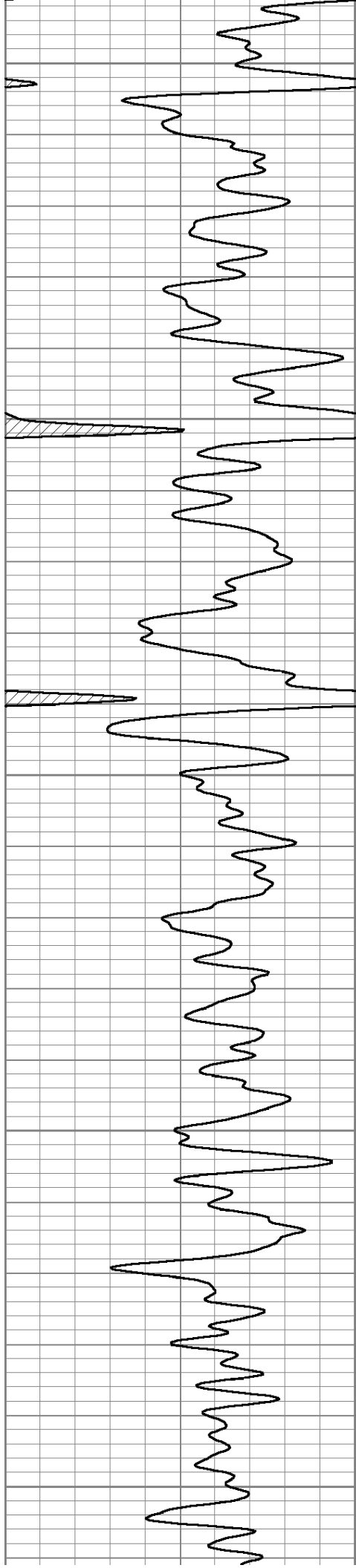
950

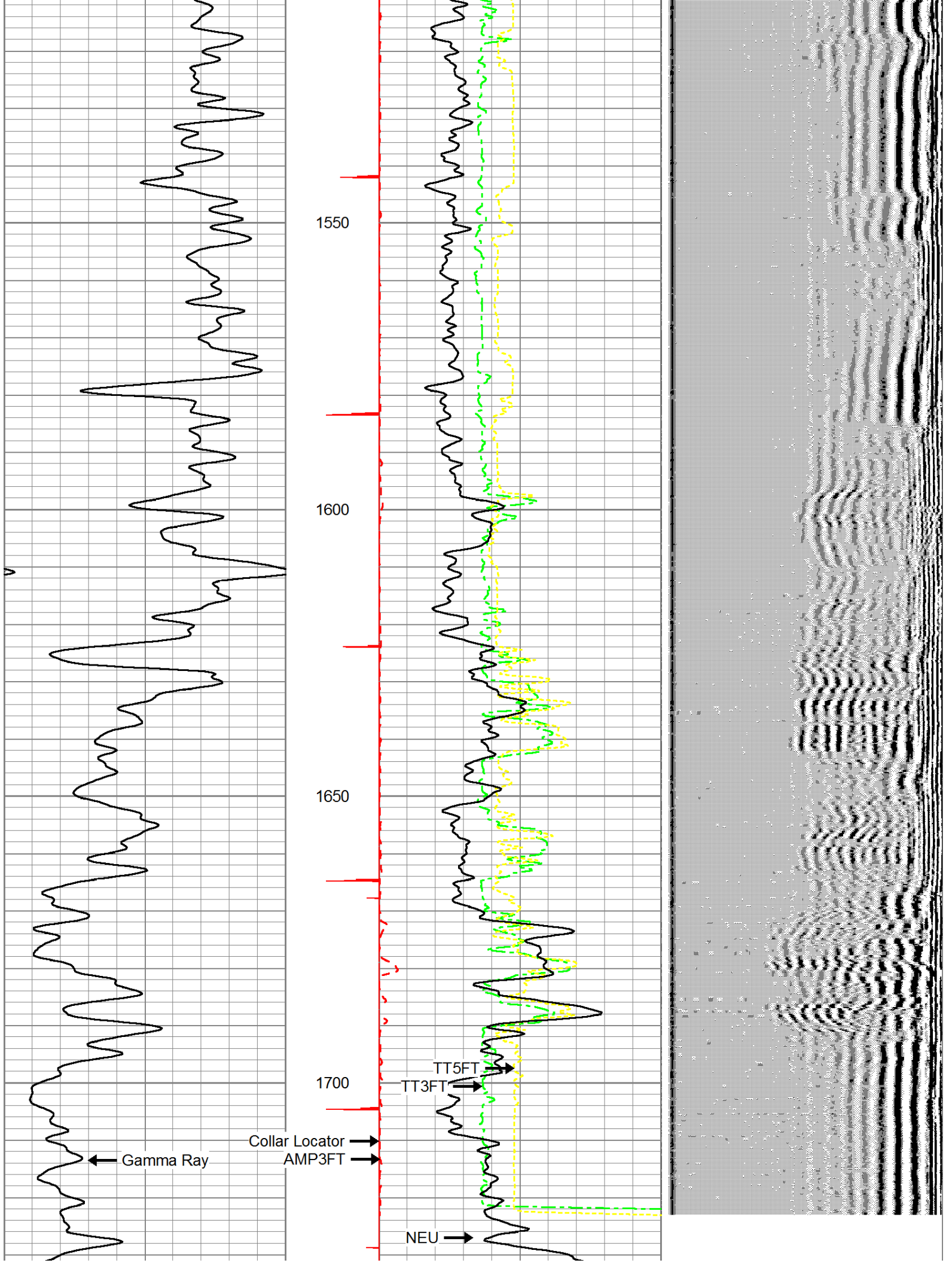
1000

1050









0	Gamma Ray	150	Collar Locator	0	AMP3FT (mV)	200	200	VDL	1200
150	gr	300	9	0	1100	TT3FT (usec)	200		
					1800	TT5FT (usec)	200		
					100	NEU (cps)	1600		



Company KANSAS MB PROJECT, LLC
 Well WALTER MOORE #MB 3
 Field WAYSIDE - HAVANA
 County CHAUTAUQUA SEC. 3 TWP. 34S RGE. 13E
 State KANSAS Date 12-16-14