



MIDWEST SURVEYS
 LOGGING - PERFORATING - CONSULTING SERVICES
 P.O. Box 68, Osawatomie, KS 66064
 913.755.2128

GAMMA RAY / NEUTRON / CCL

File No. _____

Company **JBM Oil, LLC**

Well **S. Moldenhaur No. W-130**

Field **Paola - Rantoul**

County **Franklin** State **Kansas**

Location **4634' FSL & 3611' FEL**

Other Services **Perforate**

Location **SE-NW-SW-NW**

Sec. **32** Type **15s** Rga. **21e** Elevation **NA**

Permanent Datum **GL** K.B. **NA**

Log Measured From **GL** D.F. **NA**

Drilling Measured From **GL** G.L. **NA**

Date **07-22-2014**

Run Number **One**

Depth Driller **980.0**

Depth Logger **767.3**

Bottom Logged Interval **766.3**

Top Log Interval **20.0**

Fluid Level **Fill**

Type Fluid **Water**

Density / Viscosity **NA**

Salinity - PPM Cl **NA**

Max Recorded Temp **NA**

Estimated Cement Top **0.0**

Equipment No. **107** Location **Osawatimie**

Recorded By **Steve Mandisch**

BORE-HOLE RECORD		CASINGS RECORD				
RUN No.	BIT FROM	TO	SIZE	WGHT	FROM	TO
One	9.875"	0.0	21.0	7.00#	0.0	21.0
Two	5.625"	21.0	800.0	2.875"	6.5#	0.0

Witnessed By **Terry Ballou Jr.**

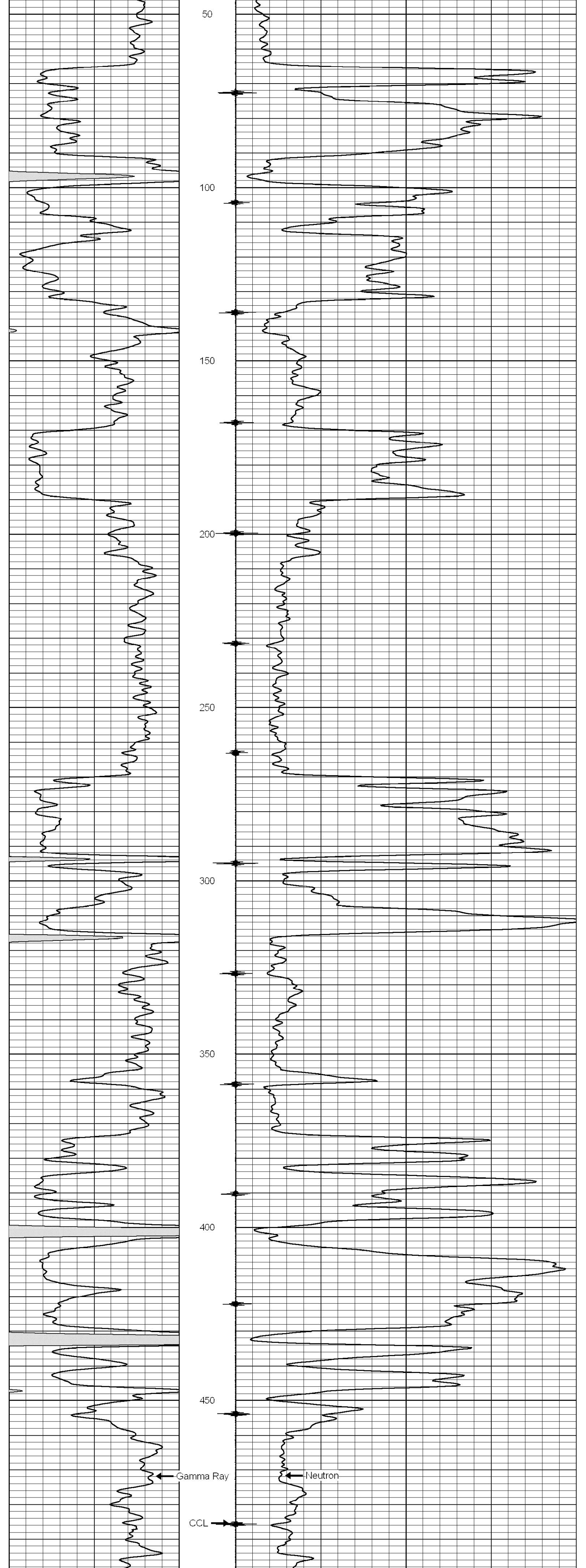
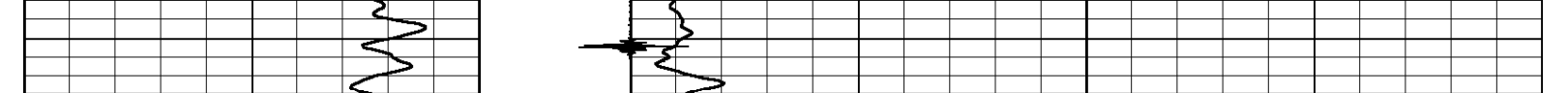
<<< Fold Here >>>

All interpretations are opinions based on inferences from electrical or other measurements and we cannot and do not guarantee the accuracy or correctness of any interpretation, and we shall not, except in the case of gross or willful negligence on our part, be liable or responsible for any loss, costs, damages, or expenses incurred or sustained by anyone resulting from any interpretation made by any of our officers, agents or employees. These interpretations are also subject to our general terms and conditions set out in our current Price Schedule.

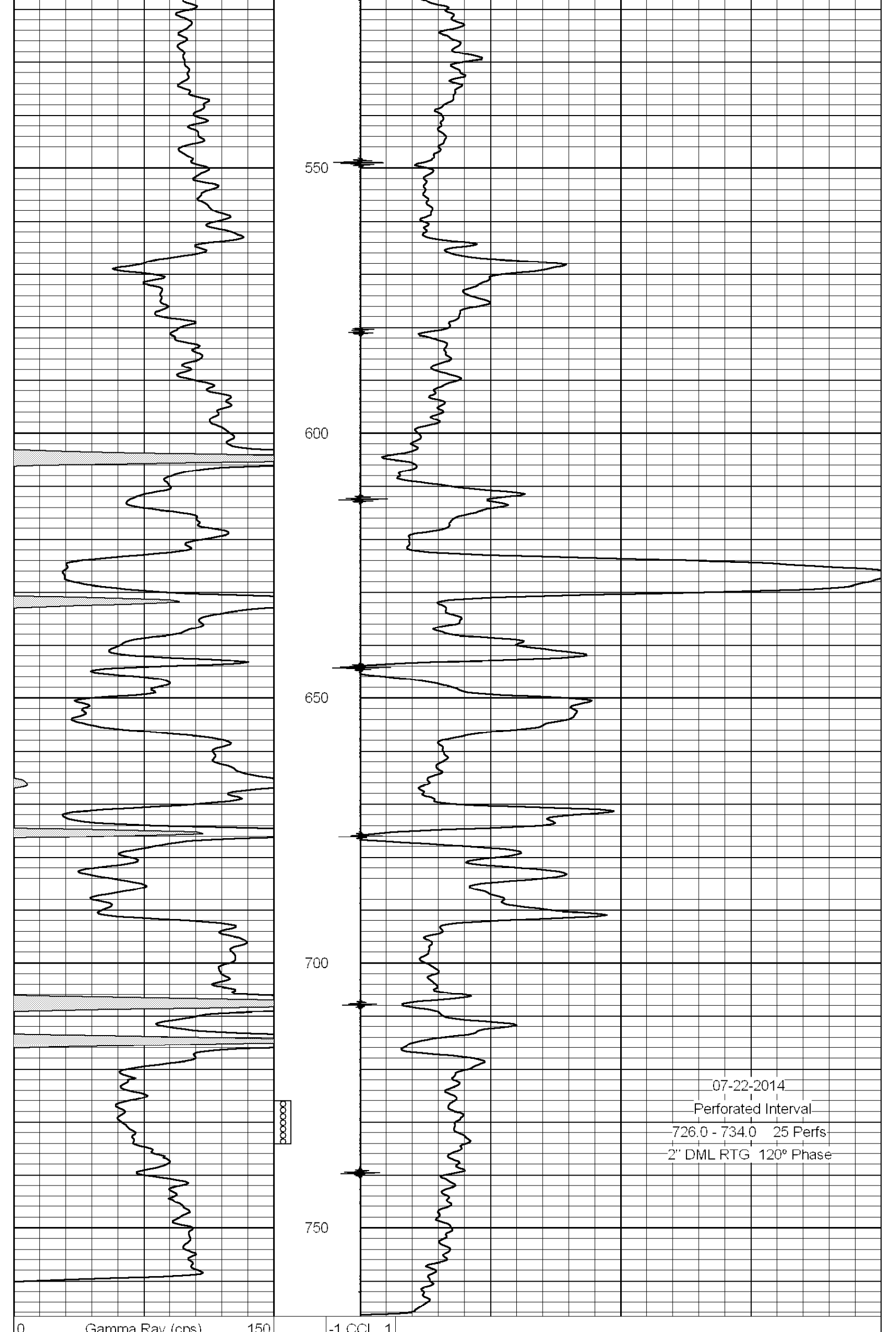
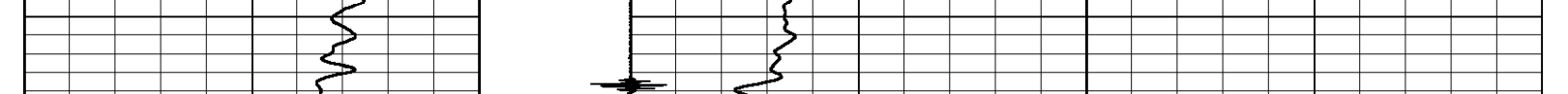
Comments

Drilling Contractor :
 Town Oilfield Services, Inc.

Database File: moldenhaur130ws.db
 Dataset Pathname: pass1
 Presentation Format: gr-n-ccl
 Dataset Creation: Tue Jul 22 13:28:55 2014 by Log SCH 111116
 Charted by: Depth in Feet scaled 1:240



Gamma Ray Neutron



Gamma Ray Neutron

07-22-2014
 Perforated Interval
 726.0 - 734.0 25 Perfs
 2" DML RTG 120° Phase