

**MIDWEST SURVEYS**  
 LOGGING - PERFORATING - CONSULTING SERVICES  
 P.O. Box 68, Ocala, Florida, KS 68064  
 913.735.2128

**GAMMA RAY / NEUTRON / CCL**

File No.

Company Legend Oil & Gas, Ltd  
 Well Patrick Collins No. - 21  
 Field Humboldt - Chanute  
 County Woodson State Kansas

Location 11551 FSL & 2805' FEL  
 NW-NW-SW-SE

Sec. 17 Typ. 25S Fge. 17E  
 Permanent Datum GL  
 Log Measured From GL  
 Drilling Measured From GL

Date 11-03-2014  
 Run Number One  
 Depth Driller 904.0  
 Bottom Logged Interval 884.2  
 Top Log Interval 20.0  
 Fluid Level Full

Other Services Perforate

Elevation 1013'  
 K.B. NA  
 D.F. NA  
 G.L. 1013'

BORE-HOLE RECORD		CASING RECORD		TO
No.	BIT	FROM	WGT.	FROM
One	11.00"	0.0	7.00"	20.0
Two	5.575"	20.0	2.875"	6.5#
				0.0
				897.9

Types Fluid: Water  
 Density / Viscosity: NA  
 Salinity - PPM Cl: NA  
 Max. Recorded Temp: NA  
 Estimated Cement Top: 0.0  
 Equipment No.: 107  
 Location: Osawatomie  
 Recorded By: Steve Whidish  
 Witnessed By: Marshall Diamond-Gallagher

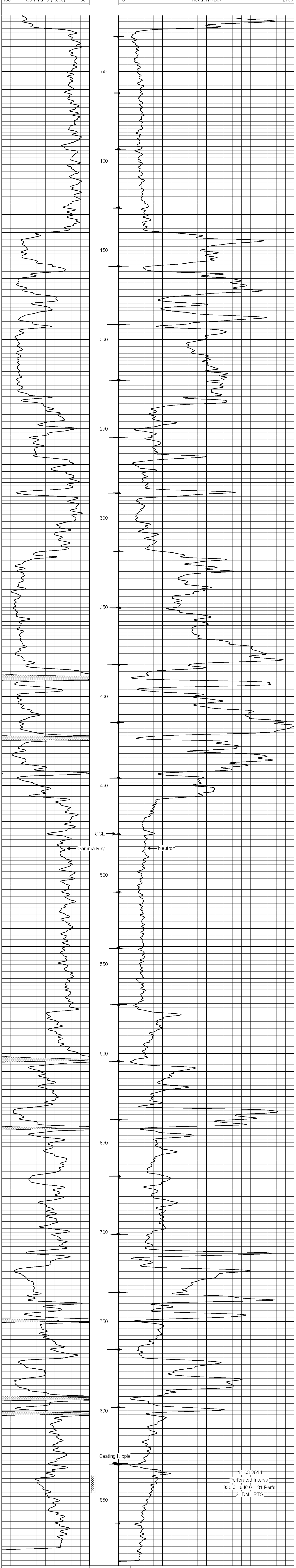
<<< Fold Here >>>

All interpretations are opinions based on inferences from electrical or other measurements and we cannot and do not guarantee the accuracy or correctness of any interpretation, and we shall not, except in the case of gross or willful negligence on our part, be liable or responsible for any loss, costs, damages, or expenses incurred or sustained by anyone resulting from any interpretation made by any of our officers, agents or employees. These interpretations are also subject to our general terms and conditions set out in our current Price Schedule.

Comments

Drilling Contractor :  
 Owens Petroleum Services, LLC

Database File: pat collins21.db  
 Dataset Pathname: pass1  
 Presentation Format: gr-n-ccl  
 Dataset Creation: Mon Nov 03 11:33:08 2014 by Log SCH 111116  
 Charted by: Depth in Feet scaled 1:240



0 Gamma Ray (cps) 150  
 150 Gamma Ray (cps) 300  
 -1 CCL 1  
 10 Neutron (cps) 2100